



**HAL**  
open science

## Shock Tube and Chemical Kinetic Modeling Study of the Oxidation of 2,5-Dimethylfuran

Baptiste Sirjean, René Fournet, Pierre-Alexandre A Glaude, Frédérique Battin-Leclerc, Weijing Wang, Matthew A Oehlschlaeger

► **To cite this version:**

Baptiste Sirjean, René Fournet, Pierre-Alexandre A Glaude, Frédérique Battin-Leclerc, Weijing Wang, et al.. Shock Tube and Chemical Kinetic Modeling Study of the Oxidation of 2,5-Dimethylfuran. Journal of Physical Chemistry A, 2013, 117 (7), pp.1371-1392. 10.1021/jp308901q . hal-01406845

**HAL Id: hal-01406845**

<https://hal.univ-lorraine.fr/hal-01406845v1>

Submitted on 1 Dec 2016

**HAL** is a multi-disciplinary open access archive for the deposit and dissemination of scientific research documents, whether they are published or not. The documents may come from teaching and research institutions in France or abroad, or from public or private research centers.

L'archive ouverte pluridisciplinaire **HAL**, est destinée au dépôt et à la diffusion de documents scientifiques de niveau recherche, publiés ou non, émanant des établissements d'enseignement et de recherche français ou étrangers, des laboratoires publics ou privés.



Distributed under a Creative Commons Attribution - NonCommercial - NoDerivatives 4.0 International License

# A Shock Tube and Chemical Kinetic Modeling Study of the Oxidation of 2,5-Dimethylfuran

Baptiste Sirjean,<sup>1</sup> René Fournet,<sup>1,\*</sup>

Pierre-Alexandre Glaude,<sup>1</sup> Frédérique Battin-Leclerc,<sup>1</sup> Weijing Wang<sup>2</sup>, Matthew A.

Oehlschlaeger<sup>2,\*</sup>

<sup>1</sup> *Laboratoire Réactions et Génie des Procédés (LRGP), Université de Lorraine, CNRS,  
BP 20451, 1 rue Grandville, 54001 Nancy, France*

<sup>2</sup> *Department of Mechanical, Aerospace, and Nuclear Engineering, Rensselaer Polytechnic  
Institute, Troy, NY, USA*

## Full length article

\*Authors to whom correspondence should be addressed:

René Fournet – rene.fournet@univ-lorraine.fr  
Phone: +33 383175202

Matthew A. Oehlschlaeger – oehlsm@rpi.edu  
Phone: 518.276.8115

## **Abstract**

A detailed kinetic model describing the oxidation of 2,5-dimethylfuran (DMF), a potential second-generation biofuel, is proposed. The kinetic model is based upon quantum chemical calculations for the initial DMF consumption reactions and important reactions of intermediates. The model is validated by comparison to new DMF shock tube ignition delay time measurements (over the temperature range 1300 – 1831 K and at nominal pressures of 1 and 4 bar) and the DMF pyrolysis speciation measurements of Lifshitz et al. [J. Phys. Chem. A 102 (52) (1998) 10655-10670]. Globally, modeling predictions are in good agreement with the considered experimental targets. In particular, ignition delay times are predicted well by the new model, with model-experiment deviations of at most a factor of two, and DMF pyrolysis conversion is predicted well, to within experimental scatter of the Lifshitz et al. data. Additionally, comparisons of measured and model predicted pyrolysis speciation provides validation of theoretically calculated channels for the oxidation of DMF. Sensitivity and reaction flux analyses highlight important reactions as well as the primary reaction pathways responsible for the decomposition of DMF and formation and destruction of key intermediate and product species.

**Keywords:** 2,5-dimethylfuran, detailed kinetic model, shock tube experiments, oxidation, biofuel,

## 1. Introduction

Furans have attracted recent interest as second-generation biofuels due to the potential for their large scale production from fructose and glucose<sup>1-2</sup> and complex biomass such as cellulose<sup>3</sup>. 2,5-Dimethylfuran (DMF) has received specific attention following the demonstration by Román-Leshkov et al.<sup>1</sup> of its synthesis through the acid-catalyzed dehydration of fructose (C<sub>6</sub>H<sub>12</sub>O<sub>6</sub>) to produce a 5-hydroxymethylfurfural (HMF, C<sub>6</sub>H<sub>6</sub>O<sub>3</sub>) intermediate that can be converted to DMF (C<sub>6</sub>H<sub>8</sub>O) by copper-ruthenium catalyzed hydrogenolysis. DMF has several advantages over ethanol, the liquid biofuel currently produced in the largest quantities worldwide, as a fuel for spark-ignition (SI) automotive engines. DMF has greater volumetric energy density, higher research octane number (RON), and lower water solubility than ethanol. A comparison of relevant properties for gasoline and gasoline alternatives, including ethanol, 1-butanol, another potential second-generation biofuel<sup>4-6</sup>, and DMF is given in Table 1.

Due to DMF's favorable properties and the potential for its synthesis from carbohydrate feedstocks, DMF has recently been studied as a potential alternative to petroleum-derived gasoline for SI engines. Zhong et al.<sup>7</sup>, Daniel et al.<sup>8</sup>, and Wu et al.<sup>9</sup> showed in a series of SI engine studies that DMF gave very similar performances and emissions to commercial gasoline with slightly greater combustion efficiency and no apparent adverse effects to engine hardware. Rothamer and Jennings<sup>10</sup> also have studied DMF/gasoline blends in a direct-injection SI engine, showing reduced propensity for knocking with the addition of DMF. Additionally, there have been a number of studies focused on measurement of laminar flame speeds and Markstein lengths for DMF and DMF mixtures<sup>11-14</sup> and DMF flame instability<sup>15</sup>. Notable observations from these studies include the measurement of laminar flame speeds for DMF that are within 10% of those for gasoline for  $\phi = 0.9-1.1$ <sup>12</sup> and within 15% of those for iso-octane, a primary reference fuel with RON = 100, for  $\phi = 0.9-1.5$ <sup>14</sup>. Recently Somers et

al.<sup>16</sup> have investigated the combustion behavior of 2-methylfuran, closely related to DMF, reporting laminar flame speeds, shock tube ignition delay times, and a comprehensive kinetic model for the description of the high-temperature oxidation of 2-methylfuran.

In work related to the thermochemistry and elementary reaction kinetics of DMF and related compounds, Simmie and Curran<sup>17</sup> have recently performed quantum chemical (QC) calculations for the enthalpies of formation and bond dissociation energies of DMF, related furans, and related radical species (potential products of DMF dissociation). Their results show that the lowest energy bond in DMF is the C-H bond of the methyl groups (85.5 kcal mol<sup>-1</sup>). In contrast, the ring-carbon-H bonds (120 kcal mol<sup>-1</sup>) and the ring-carbon-CH<sub>3</sub> bonds (115 kcal mol<sup>-1</sup>) are very strong due to the electronic structure of DMF and the geometrical stiffness of the five-membered ring which comprises DMF. These strong bonds make DMF fairly unreactive at high temperatures relative to other fuels and a good knock-inhibitor, as indicated by its high RON given in Table 1 and the experimentally observed reduced knocking propensity of DMF/gasoline blends<sup>10</sup>. Following the Simmie and Curran<sup>17</sup> QC thermochemistry calculations, Simmie and Metcalfe<sup>18</sup> investigated the unimolecular decomposition of DMF using QC methods and found channels involving the opening of the aromatic ring to be most important.

Studies focused on the kinetics of DMF thermal decomposition include a very low-pressure (~0.1 Pa) flow reactor study of DMF by Grela et al.<sup>19</sup> who measured products, including carbon monoxide (CO), pentadiene isomers (C<sub>5</sub>H<sub>8</sub>), water (H<sub>2</sub>O) and benzene (C<sub>6</sub>H<sub>6</sub>), and proposed a mechanism for DMF thermal decomposition. Lifshitz et al.<sup>20</sup> studied the thermal decomposition of DMF behind reflected shock waves in a single-pulse shock tube over the temperature range 1070-1370 K and at overall densities of ~3×10<sup>-5</sup> mol cm<sup>-3</sup>, corresponding to pressures from 2 to 3.7 bar. A large number of products resulting from unimolecular cleavage of the ring and consecutive free radical reactions were obtained under

shock heating, including CO, vinylacetylene (C<sub>4</sub>H<sub>4</sub>), acetylene (C<sub>2</sub>H<sub>2</sub>), methane (CH<sub>4</sub>), ethylene (C<sub>2</sub>H<sub>4</sub>), and ethane (C<sub>2</sub>H<sub>6</sub>), among others. To model the observed product distribution, Lifshitz et al. developed a DMF decomposition reaction scheme containing 50 species and 181 reactions.

In recent work Djokic et al.<sup>21</sup> studied the decomposition of DMF in a flow tube at temperatures from 873 to 1098 K providing speciation data describing both the fragmentation and molecular growth kinetics for DMF. In other recent work Friese et al.<sup>22-23</sup> have measured the formation of H atoms using atomic resonance absorption following shock heating of DMF and the H-atom precursor, ethyl iodide. Friese et al.<sup>22</sup> recommended rate coefficients for the fission of C-H bonds in the DMF methyl groups and the reaction of H atoms with DMF. Sirjean and Fournet have also recently investigated the potential energy surface for the reaction of H atoms with DMF<sup>24</sup> as well as the thermal decomposition of the 5-methyl-2-furanylmethyl radical<sup>25</sup>, *via* theoretical calculations and master equation/RRKM modeling.

Wu et al.<sup>26</sup> recently identified combustion intermediates formed during DMF oxidation in a low-pressure (4.0 kPa) premixed laminar DMF/O<sub>2</sub>/Ar flame at an equivalence ratio of 2.0 using tunable vacuum ultraviolet (VUV) synchrotron radiation photoionization with molecular-beam mass spectrometry. More than 70 species were detected, including furan and its derivatives, aromatics, and free radicals. Possible reaction pathways of DMF, 2-methylfuran, and furan were proposed based on the intermediates identified. In following work, Tian et al.<sup>27</sup> performed speciation measurements, also using synchrotron radiation photoionization mass spectrometry, for low-pressure premixed furan/O<sub>2</sub>/Ar flames. They identified 40 intermediate species and developed a detailed kinetic model for furan oxidation.

To assess the potential of DMF as a gasoline replacement or additive, a validated detailed kinetic model for the oxidation of DMF is required. Such a model, when incorporated into computational fluid dynamics (CFD) simulations, will allow for predictive assessment of

DMF influence on engine performance (e.g., efficiency, emissions, knocking propensity, etc.)<sup>28</sup>. However, despite the research efforts focused on DMF synthesis, flame propagation and speciation, thermochemistry, and thermal decomposition reaction kinetics, to our knowledge, a detailed kinetic model for the oxidation of DMF has yet to be proposed in the literature. Additionally, limited kinetic measurements exist in the literature for the quantitative assessment and validation of a DMF oxidation model and no measurements have been previously reported for DMF ignition delay times, an important kinetic model validation target describing fuel reactivity.

Here, for the first time, a detailed kinetic model describing the oxidation of DMF is proposed. The kinetic model is based upon quantum chemistry calculations for the initial DMF consumption reactions and important reactions of intermediates. The model is validated by comparison to new shock tube ignition delay time measurements for DMF, the first such measurements reported to our knowledge, and the thermal decomposition speciation measurements of Lifshitz et al.<sup>20</sup>, which represent good targets to study the first decomposition steps of DMF.

## **2. Experimental Method**

Ignition delay time measurements were carried out in a 12.3 cm inner diameter, high-purity, low-pressure (< 10 bar), stainless steel shock tube previously described by Moss et al.<sup>29</sup>. Measurements were made in the reflected shock region for seven DMF/O<sub>2</sub>/Ar reactant mixtures specified in Table 2 for temperatures from 1300 to 1831 K and at nominal pressures of 1 and 4 bar. Reactant mixtures were made by introducing DMF vapor (99% purity from Sigma Aldrich) into the evacuated mixing vessel and then adding O<sub>2</sub> (99.995% purity from Noble Gases) and Ar (99.999% purity from Noble Gases) from high-pressure cylinders at appropriate proportions as determined using partial pressures; all gases were introduced

through a stainless steel manifold and the DMF was stored in air-free glassware. Pressures were measured using a high-accuracy Baratron manometer and a Setra diaphragm pressure gauge and the manifold and mixing vessel were evacuated using a mechanical rotary vacuum pump (ultimate pressure of  $2 \times 10^{-3}$  Torr). Once synthesized, the mixtures were mechanically mixed using a vane stirrer located inside the mixing vessel for at least 30 minutes prior to experiments. Prior to experiments the shock tube driven section was evacuated using a Varian V70 turbomolecular pump (ultimate pressure of  $1 \times 10^{-6}$  Torr with a leak rate of  $3 \times 10^{-6}$  Torr  $\text{min}^{-1}$ ). Following driven section evacuation, the reactant mixtures were loaded into the driven section and shock waves were generated by filling the evacuated driver section with pure He and bursting single polycarbonate diaphragms; diaphragm rupture was achieved using a fixed mechanical cutter.

The incident shock velocity was measured using four time of traversal measurements made with five fast-response (rise time  $\leq 1 \mu\text{s}$ ) piezoelectric pressure transducers spaced (PCB model 113A) over the last 1.24 m of the driven section. The time intervals for passage of the shock wave were determined by sending the signals from the five transducers to four Phillips PM6666 timer counters (0.1  $\mu\text{s}$  resolution). The four incident shock velocity measurements were linearly extrapolated to the end wall of the driven section for determination of the incident shock velocity at the test location. The final pressure transducer, located 2 cm from the end wall, was also used for quantitative pressure measurements in the incident and reflected shock regimes. The incident shock velocity extrapolated to the end wall test location were used to determine incident and reflected shock conditions using the normal shock equations with the known initial reactant mixture composition, temperature, and pressure and the known thermochemical properties for the reactant mixture. The initial pressure was measured using a high-accuracy Baratron manometer and the initial room temperature was measured using a mercury thermometer. The thermochemical properties for  $\text{O}_2$  and Ar were



taken from the Goos et al. database<sup>30</sup> and those for DMF were taken from quantum chemical calculations performed at the CBSQB3 level as part of the present study. The estimated uncertainty in the reflected shock temperature and pressure are 1% and 1.5% respectively. These uncertainties result from a consideration of uncertainties in initial conditions (temperature, pressure, and mixtures composition) and measured incident shock velocity, by far the largest contributor to uncertainty in the post shock conditions.

Following passage of the reflected shock wave, the pressure rises slowly at the test location over the course of the test time due to viscous gas dynamics. In the present experiments the pressure gradient is measured to be  $(dP/dt)(1/P_0) = +2\% \text{ ms}^{-1}$  to  $+3\% \text{ ms}^{-1}$  and has been included in the homogenous reactor kinetic modeling described in later sections for a more accurate description of the shock tube test environment than provided by the traditional adiabatic constant volume model.

Ignition times were measured using chemiluminescence from electronically-excited OH radicals (OH\*), measured through the driven section end wall, and pressure measured at a side wall location 2 cm from the end wall. A UV fused silica optic flush mounted in the shock tube end wall provided optical access and OH\* chemiluminescence was observed using a UG-5 colored glass filter and high-speed silicon photodetector. Figure 1 illustrates an example ignition delay time measurement. The ignition delay time is defined as the time interval between the arrival and reflection of the shock at the end wall and the onset of ignition at the end wall. The incident shock velocity measurement and measurement of the time of passage at the last pressure transducer, 2 cm from the end wall, allow for determination of the shock arrival at the end wall. The onset of ignition at the end wall is defined by extrapolating the maximum slope in the end wall OH\* chemiluminescence to the baseline pre-ignition value. All signals were recorded using a National Instruments PCI-6133 data acquisition card (3 MHz, 14-bit and eight analog input channels) interfaced to a desktop computer with

LabVIEW software. Reported ignition delay times have estimated uncertainties of at most  $\pm 20\%$  ( $2\text{-}\sigma$  confidence interval) based on contributions from uncertainties in reflected shock conditions and uncertainties in interpreting measured signals.

### 3. Experimental results

Measured ignition delay times are shown in Figures 2 and 3 and tabulated in the appended Supplementary Material. The data shows Arrhenius exponential dependence on inverse temperature, typical of high-temperature ignition, with apparent activation energy for all data sets near  $40 \text{ kcal mol}^{-1}$ . Ignition delay times are observed to decrease with increasing fuel concentration, at fixed pressure and equivalence ratio, and decrease with increasing pressure, for fixed reactant mixture composition. Ignition delay times are observed to increase with increasing equivalence ratio (decreasing  $\text{O}_2$  fraction), for fixed pressure and DMF fraction. The ignition delay time dependencies on mixture composition and pressure can be described using power-laws in the concentrations of the three reactant gas constituents. Based on linear least-squares regression analysis for all the data, the following correlation was formulated to describe ignition delay time:

$$\tau = 1.8 \times 10^{-8} [\text{DMF}]^{0.34(\pm 0.04)} [\text{O}_2]^{-0.79(\pm 0.03)} [\text{Ar}]^{-0.37(\pm 0.05)} \exp(21000 (\pm 300) [\text{K}] / T) [\mu\text{s}]$$

where concentrations  $[\text{X}_i]$  are in units of  $\text{mol cm}^{-3}$  and the temperature  $T$  is in Kelvins. The uncertainties in correlation parameters given are the  $1\text{-}\sigma$  uncertainties in the regression analysis which result from the scatter in the experimental data. In Figure 4 the experimental data has been correlated to a common condition (1% DMF,  $\Phi = 1.0$ , and 1 bar) to demonstrate the suitability of the correlation; the correlation provides a high  $R^2$  value of 99.5%. The correlation should not be extrapolated far from the conditions of the reported experiments due to the complicated and non-linear dependencies of oxidation chemistry on reactant mixture

composition, temperature, and pressure. It is also worth noting that the correlation given above results in ignition time dependence on pressure of  $\tau \sim P^{-0.81}$ .

#### **4. Detailed Chemical Kinetic Model**

A new model has been developed to describe the pyrolysis and oxidation kinetics of DMF at high temperatures following the chain reaction theory used in EXGAS<sup>31-32</sup>, a software for the automatic generation of kinetic models. The organizational structure of the model is as follows. Newly developed high-temperature DMF kinetics were integrated with a base mechanism comprised of the toluene reaction kinetics proposed by Bounaceur et al.<sup>33</sup> and recently revisited by Husson et al.<sup>34</sup>. The base mechanism describes the oxidation of toluene and benzene as well as the high-temperature chemistry of C<sub>3</sub>-C<sub>4</sub> hydrocarbons<sup>35</sup>. In this work, the recently updated reaction base for C<sub>0</sub>-C<sub>2</sub> hydrocarbons proposed by Curran and co-workers was also adopted<sup>36</sup>. The base mechanism is appended with a set of reactions describing the high-temperature pyrolysis and oxidation of DMF, i.e., the primary mechanism. The high-temperature chemistry of molecular products formed in the primary mechanism and not reacting in the base model are then described in a secondary mechanism. In this section, the key elements of the primary and secondary mechanisms, given in Table 3, are discussed in detail. Emphasis is also given to the reactions of some major products that were not adequately described in the base model.

##### **4.1 Unimolecular and bimolecular initiation of DMF**

An important characteristic of the DMF unimolecular decomposition sub-mechanism within the proposed kinetic model is that rate coefficients for a majority of the crucial reactions are based on the conclusions of theoretical quantum calculations performed in a recent study<sup>37</sup>.

The most important features of this study are briefly recalled here. Three types of initiation reaction were envisaged for DMF: (a) initial C-C or C-H bond fissions in the lateral methyl groups, (b) furan ring opening by C-O bond fission producing a diradical, and (c) internal hydrogen atom or methyl group transfer involving the formation of carbenic intermediates that can further decompose into molecular products. All these pathways were explored in detail. Based on the computed potential energy surfaces (PES), thermochemical data and high-pressure limit rate coefficients were determined and included in a sub-mechanism for DMF unimolecular decomposition. The theoretical study<sup>37</sup> showed that the unimolecular decomposition of DMF is dominated by two product channels: CH<sub>3</sub>CO radical + C<sub>4</sub>H<sub>5</sub>-1s (buta-1,2-dien-1-yl) and R1C<sub>6</sub>H<sub>7</sub>O (5-methyl-2-furanylmethyl) radical + H atom. The PES computed for these two decomposition pathways is presented in Figure 5. The C<sub>6</sub>H<sub>7</sub>O + H exit channel is directly reached by initial C-H bond cleavage in DMF. CH<sub>3</sub>CO and C<sub>4</sub>H<sub>5</sub>-1s are produced via a carbenic initiated rearrangement of DMF into hexa-3,4-dien-2-one (M4) which in turn decomposes into these products through C-C bond cleavage. It was shown that under combustion conditions, CH<sub>3</sub>CO and C<sub>4</sub>H<sub>5</sub>-1s solely decompose into CH<sub>3</sub> + CO and C<sub>4</sub>H<sub>4</sub> (1-buten-3-yne) + H atom, respectively.

In the present kinetic model, all unimolecular decomposition pathways computed in reference<sup>37</sup> were included, along with computed thermochemical data and high-pressure limit rate coefficients (reactions 1-24 and 28-44 in Table 3); detailed structures of the species can be found in reference<sup>37</sup> and have been reported in the supplementary materials. As most of the target experimental data were obtained near atmospheric pressure, pressure dependencies of rate parameters for the most important unimolecular and chemically-activated reactions were systematically considered when available. Pressure-dependent kinetic parameters for the two preponderant pathways in DMF unimolecular decomposition (Figure 5) were taken from reference<sup>37</sup> (reactions 1, 4 or 5, and 28). Note that a detailed chemical kinetic model is

available in the supplementary material and contains high-pressure limit and atmospheric pressure (1 bar) rate coefficients for all the unimolecular decompositions considered, except for minor channels (reactions 7-24 and 29-44) for which only high-pressure limit rate parameters have been calculated. Using high-pressure limit rate parameters for these minor thermal decomposition routes set an upper limit for the production of minor DMF fragments via these reactions.

The bimolecular initiations of DMF with O<sub>2</sub> leading to stabilized R1C<sub>6</sub>H<sub>7</sub>O radicals and vinylic 2,5-dimethylfuran-3-yl radicals (named DMF-3-yl, reactions 25 and 26) were considered with kinetic parameters proposed by Ingham et al.<sup>38</sup>. The self bimolecular initiation of DMF leading to R1C<sub>6</sub>H<sub>7</sub>O and R1C<sub>6</sub>H<sub>9</sub>O was also taken into account (reaction 27) with estimated kinetic parameters.

#### **4.2 Propagation reactions of DMF**

Because of the symmetry of DMF, only two types of hydrogen atoms can be considered in the H-abstraction reaction class: H-abstractions from the methyl groups of DMF (producing the resonantly stabilized R1C<sub>6</sub>H<sub>7</sub>O radical) and from the furan ring leading to the vinylic radical (DMF-3yl). As mentioned earlier, we aim to test the detailed chemical kinetic model against pyrolysis species profiles obtained by Lifshitz et al.<sup>20</sup> in single-pulse shock tube experiments. For this reason, H-abstraction from DMF by C<sub>2</sub>H<sub>3</sub>, C<sub>3</sub>H<sub>5</sub>, iC<sub>4</sub>H<sub>3</sub>, iC<sub>4</sub>H<sub>5</sub>, C<sub>5</sub>H<sub>5</sub>#, c-C<sub>5</sub>H<sub>7</sub>, and R4C<sub>6</sub>H<sub>7</sub>O radicals were considered in addition to those by H and O atoms and OH, CH<sub>3</sub> and HO<sub>2</sub> radicals because the former hydrocarbon radicals were found to be present in non-negligible concentrations under pyrolysis conditions. Given the difference of stability between R1C<sub>6</sub>H<sub>7</sub>O ( $\Delta_f H^\circ = 2.7 \text{ kcal mol}^{-1}$ ) and DMF-3yl radicals ( $\Delta_f H^\circ = 37.5 \text{ kcal mol}^{-1}$ ), only the most important H-abstractions by H, OH, and CH<sub>3</sub> were taken into account for the formation of the vinylic DMF-3-yl radical.

The kinetic parameters for H-abstraction reactions by OH radicals from DMF (reactions (47) and (58)) were taken from the *ab initio* study of Simmie and Metcalfe<sup>18</sup>. Rate coefficients for H-abstractions by H atoms from DMF producing the stabilized R1C<sub>6</sub>H<sub>7</sub>O radical was taken from the theoretical study of Sirjean and Fournet<sup>24</sup>. In their study, the PES of this reaction was studied at the CBS-QB3 and G4 level of theories and compared to G3 results of Simmie and Metcalfe<sup>18</sup>. It was shown that the computed energy barriers for the H-abstraction by H atoms ranged between 4.9 (G4 level of theory) and 7.1 kcal mol<sup>-1</sup> (G3 method). The computed CBS-QB3 energy barrier of 5.9 kcal mol<sup>-1</sup> was ultimately adopted in reference<sup>24</sup> with a quoted uncertainty of  $\pm 1.5$  kcal mol<sup>-1</sup>. Therefore, a factor of two in uncertainty was reported in the computed rate coefficient between 1000 and 2000 K<sup>24</sup>, i.e., the lower and upper bound for the value of rate parameter  $k$  are defined by  $k/2$  and  $k*2$ , respectively. In this work, preliminary sensitivity analyses showed that this reaction is crucial in both pyrolysis and oxidation simulations. The sensitivity of DMF conversion under pyrolysis conditions and the sensitivity of shock tube ignition delay times to this reaction (H-abstraction from DMF by H atoms producing the stabilized R1C<sub>6</sub>H<sub>7</sub>O radical) motivated an increase in the initial rate coefficient towards the upper limit of its uncertainty range. Consequently, the upper limit of the rate coefficient recommended in reference<sup>24</sup> was adopted for reaction (45). Kinetic parameters for all other H-abstraction reactions were obtained by analogies and reaction rate rules from the literature, except for H-abstraction from DMF by methyl radicals yielding R1C<sub>6</sub>H<sub>7</sub>O + CH<sub>4</sub>. This rate coefficient was calculated in the present work at the CBS-QB3 level of theory using the same computational approach as presented in reference<sup>24</sup>.

The decomposition of resonantly stabilized R1C<sub>6</sub>H<sub>7</sub>O radical is central to the high-temperature chemistry of DMF. In the present kinetic model, description of its unimolecular decomposition are solely based on conclusions of theoretical calculations performed by Sirjean and Fournet<sup>25</sup>. Briefly, the PES of the thermal decomposition of R1C<sub>6</sub>H<sub>7</sub>O was

investigated thoroughly, for the first time, using CBS-QB3 calculations. Among all pathways examined, only those kinetically important were retained in the Master Equation (ME)/RRKM simulations. Note that the C-H bond scission from  $R_1C_6H_7O$  was not considered in the final mechanism since preliminary simulations showed that this reaction had no kinetic influence in our conditions. This result is consistent with previous theoretical study<sup>25</sup>. The final PES proposed in this recent work is depicted in Figure 6. ME/RRKM modeling showed that the main decomposition pathway of  $R_1C_6H_7O$  involves a ring enlargement, in three steps, leading to the formation of  $R_4C_6H_7O$  followed by a C-H bond beta-scission yielding 2,4-cyclohexadienone ( $M_2C_6H_6O$ ). Other decomposition channels ultimately produce linear and cyclic unsaturated  $C_5H_7$  species and CO via the formation of  $R_5C_6H_7O$ ,  $R_6C_6H_7O$ , and  $R_9C_6H_7O$  radicals. Three sets of reactions are presented in Table 3 for the pressure dependence of  $R_1C_6H_7O$ : at 1 bar (reactions 60-72), 10 bar (reactions 73-85) and high-pressure limit (reactions 86-100). All thermochemical data for  $C_6H_7O$  radicals were taken from CBS-QB3 calculations of reference<sup>24</sup>.

As H-abstraction reactions leading to the vinylic DMF-3-yl radical were shown to be negligible, the decomposition of DMF-3-yl was described only by the most important reactions (reactions 101-110). The ring opening of the vinylic DMF-3yl radical by  $\beta$ -scission was written based on an analogy with furan-3-yl radical<sup>27</sup>. The resulting linear 5-oxohex-2-yn-4-yl radical ( $CH_3COCHCCCH_3$ ) cannot easily eliminate CO, as in the case of furan, because of the presence of the methyl groups. For this reason, its decomposition was assumed to proceed mainly by a C-C bond  $\beta$ -scission yielding  $CH_3$  radicals and pent-1-en-3-yn-1-one ( $CH_3CCCHCO$ ). Reactions consuming the latter species were also included: (a) H-abstraction by H atoms,  $CH_3$ , and OH radicals leading to the formation of the stabilized pent-1-en-3-yn-5-anoyl radical ( $\bullet CH_2CCCHCO$ ) and its subsequent C-C bond  $\alpha$ -scission into CO and  $C_4H_3$  radicals; (b) Initial C-H bond fission yielding pent-1-en-3-yn-5-anoyl radicals and H atoms;

(c) Hydrogen addition on the carbon atom located in  $\alpha$  position of the C=O group and the subsequent C-C bond  $\alpha$ -scission of the adduct into CO and but-2-yn-1-yl radical (C<sub>4</sub>H<sub>5</sub>-2). Thermochemical data of all species contained in the DMF-3yl decomposition sub-mechanism were calculated with THERGAS software<sup>39</sup>, based on group additivity methods<sup>40</sup>, except for ketones where CBS-QB3 calculations were performed. Kinetic parameters for these processes were estimated from analogies with the literature and are detailed in the footnotes of Table 3.

The description of addition reactions of H atoms to DMF (reactions 111-119) are also based on the recent theoretical chemical kinetic study<sup>24</sup>. All possible decomposition routes of the initial adducts of the DMF + H reaction were thoroughly studied using CBS-QB3 calculations and ME/RRKM simulations. It was shown that two exit channels need to be considered to properly describe this process: (a) the classical ipso substitution DMF + H  $\rightarrow$  2-methylfuran (MF) + CH<sub>3</sub> (reaction 111), and (b) rearrangements of the initial stabilized adduct ultimately yielding 1,3-butadiene and the acetyl radical (CH<sub>3</sub>CO) (reaction 112). The detailed reaction pathways for the H-atom addition to DMF are described in Figure 7. The ring opening of the stabilized R1C<sub>6</sub>H<sub>9</sub>O adduct produces R3C<sub>6</sub>H<sub>9</sub>O radical that can undergo an internal H-atom transfer via a 5-membered cyclic transition state yielding R7C<sub>6</sub>H<sub>9</sub>O radical. The C-C bond  $\beta$ -scission of the latter radical ultimately yields 1,3-butadiene and CH<sub>3</sub>CO radical. At the high-pressure limit, all intermediates are included in the reaction sub-mechanism (reactions 115-119). For lower pressures, an adequate description of this reaction sequence requires it to be treated as a chemically-activated system, as it was in reference<sup>24</sup> where it was shown that all C<sub>6</sub>H<sub>9</sub>O intermediates are not stabilized at high temperatures and atmospheric pressure. Therefore, at 1 bar the H-atom addition to DMF can be described by reactions 111 and 112. All thermochemical and kinetic data were taken from the theoretical study presented in reference<sup>24</sup>.



OH-addition to DMF (reaction 120) is an important process for the description of DMF combustion chemistry. However, no information on this elementary reaction is available in the literature. For this reason, this reaction was considered in the proposed kinetic model assuming that this process will ultimately lead to the formation of  $\text{CH}_3\text{CO}$ , acetaldehyde, and acetylene. The formation of these products was postulated solely based on a mechanistic investigation of the addition reaction using thermochemical kinetics principles. The rate coefficient for this process was assumed similar to that of furan + OH measured by Atkinson<sup>41</sup>.

Termination reactions of the resonantly stabilized  $\text{R4C}_6\text{H}_7\text{O}$  radical with H atoms were also included because this radical can be found in non-negligible quantity under pyrolysis conditions (reactions 121-122). These reactions lead to the formation of cyclohexa-2,4-dien-1-one ( $\text{M2C}_6\text{H}_6\text{O}$ ), one of the most important primary products of DMF combustion, and cyclohex-2-en-1-one ( $\text{cC}_6\text{H}_8\text{O}$ ). The decomposition reactions of these products are detailed in the secondary mechanism.

### **4.3 Secondary mechanism**

The description of the secondary mechanism focuses on the consumption routes of the main primary products that were not described in the base models. The oxidation and thermal decomposition chemistry of 2,4- and 2,5-cyclohexadienone ( $\text{M2C}_6\text{H}_6\text{O}$  and  $\text{M3C}_6\text{H}_6\text{O}$ ) as well as 2-methylfuran (MF) were comprehensively detailed in the secondary mechanism because of the crucial role played by these products in the combustion of DMF.

The decomposition reactions of cyclohexadienone molecules considered in the secondary mechanism involves several reaction classes:

- Initial C-H bond fission leading to phenoxy radicals and H atoms (reactions 123 and 124). The reverse combination reactions were written with pressure dependent kinetic parameters similar to that of the phenoxy combination with H atoms to produce phenol.

- H-abstractions from M2C<sub>6</sub>H<sub>6</sub>O and M3C<sub>6</sub>H<sub>6</sub>O by H and O atoms and OH, CH<sub>3</sub> and HO<sub>2</sub> radicals, and by larger hydrocarbon radicals: C<sub>2</sub>H<sub>3</sub>, C<sub>3</sub>H<sub>5</sub>, iC<sub>4</sub>H<sub>3</sub>, iC<sub>4</sub>H<sub>5</sub>, C<sub>5</sub>H<sub>5</sub><sup>#</sup>,c-C<sub>5</sub>H<sub>7</sub>, and R4C<sub>6</sub>H<sub>7</sub>O. All these reactions lead to the formation of phenoxy radicals whose combustion chemistry is described in the base model.

- The unimolecular decomposition routes of these two cyclohexadienones have been theoretically studied in detail by several groups within the framework of phenol thermal decomposition<sup>42-44</sup>. Thermochemical and kinetic data were taken from the recent theoretical study<sup>25</sup> of the thermal decomposition of 5-methyl-2-furanylmethyl (R1C<sub>6</sub>H<sub>7</sub>O). These reactions were re-investigated at the CBS-QB3 level of theory with a focus on the determination of pressure-dependent kinetic parameters specific to these molecules. Three sets of pressure-dependent reactions can be selected in our DMF combustion kinetic model: for atmospheric pressure conditions (reactions 149 -156), at 10 bar (reactions 157-164), and in the high-pressure limit (reactions 165-172).

The 2-methylfuran (MF) decomposition sub-mechanism is mostly based on analogies with DMF and furan reactions. It includes unimolecular initiations, H-atom abstractions and additions, and the subsequent decomposition of the created radicals. Most thermochemical data were computed using the CBS-QB3 method. This sub-mechanism is not intended to be a comprehensive combustion kinetic model for MF. It was developed only to describe in a simplified and effective way the principle decomposition routes of MF.

Three unimolecular initiation reactions were included:

- The initial C-H bond fission leading to stabilized furan-2-ylmethyl radicals (reaction 201).

-  $\alpha$ -Carbene formation (on the MF moiety with a methyl group) followed by CO elimination from penta-2,3-dienal ( $\text{CH}_3\text{CHCCHCHO}$ ). This sequence (reactions 178 and 180) is based on the main unimolecular decomposition pathway for furan. In addition, H-abstraction by H, OH, and  $\text{CH}_3$  from the aldehydic hydrogen atom of penta-2,3-dienal (considered because of a low C-H bond dissociation energy) and the subsequent CO elimination from the formed radical were added (reactions 182-185).

-  $\alpha$ -Carbene formation (on the methyl-free moiety of MF) leading to the formation of penta-3,4-dien-2-one ( $\text{CH}_3\text{COCHCCH}_2$ ) which in turn mainly decomposes by initial C-C bond fission yielding acetyl ( $\text{CH}_3\text{CO}$ ) and propargyl ( $\text{C}_3\text{H}_3$ ) radicals. This carbenic initiated thermal decomposition route (reactions 177 and 179) is based on analogy with the main unimolecular decomposition pathway for DMF.

H-abstractions from MF by H, O, OH,  $\text{CH}_3$ ,  $\text{HO}_2$ ,  $\text{C}_5\text{H}_5\#$ ,  $\text{C}_3\text{H}_5$ , and *c*- $\text{C}_5\text{H}_7$  radicals (reactions 186- 197) and the decomposition of the radicals produced are based on analogies with furan and DMF. It is expected that the preponderant reaction flux from H-abstraction will lead to the formation of resonantly stabilized furan-2-ylmethyl radicals (named furylCH<sub>2</sub>). The main decomposition path of this radical should follow the trends observed in the decomposition furanyl radicals: a ring opening, followed by an internal H-atom transfer via a 5-membered ring transition state structure, and the elimination of CO (reactions 198-200).

H-addition to MF was also considered in the MF sub-mechanism (reactions 205 – 209). A simplified reaction scheme was adopted. It consists of the addition of a hydrogen atom to MF leading to the formation of the resonantly stabilized 2-methyl-2,3-dihydrofuran-3-yl radical (reaction 205). Based on analogies with hydrogen atom addition to DMF and furan, two decomposition routes for the initial adduct were included: the ipso substitution leading to furan and  $\text{CH}_3$  treated here as a chemically activated reaction with a similar rate coefficient as

that determined at 1 bar for DMF, and the characteristic reaction sequence found for furan: ring opening, internal transfer of the aldehydic H atom, and elimination of CO (reactions 207-209). The latter reactions are not treated as chemically activated, but, as a first approximation, high-pressure limit rate coefficients determined in the case furan are used.

Only the most important features of high-temperature DMF thermal decomposition and oxidation chemistry included in the kinetic model have been discussed here. Complete high-pressure limit and atmospheric pressure kinetic models can be found in the supplemental material. Care was taken to provide a reference for each DMF- and MF-specific reaction. In this work, only the atmospheric pressure rate coefficients were used for validation as all experimental data were obtained near atmospheric pressure. The complete atmospheric pressure model features 294 species and 1459 reactions.

## **5. Model validation**

The proposed kinetic model is assessed and validated at high-temperature conditions through comparisons with new ignition delay times, measured behind reflected shock waves, and pyrolysis product speciation measurements made in single-pulse shock tube experiments by Lifshitz et al.<sup>20</sup>.

### **5.1 Shock tube (ST) ignition delay times**

Simulations were performed with the SENKIN code from the CHEMKIN-II program suite<sup>45</sup>. For the simulation of the new DMF ignition delay times (described in §2 and §3), a pressure gradient consistent with that observed experimentally in the post-reflected shock-heated gases was included in the simulations ( $3\% \text{ ms}^{-1}$ ) through the prescription of a volume history as described by Chaos and Dryer<sup>46</sup>. Simulations were performed for each individual experimental condition. The onset of ignition was determined from simulations using the

maximum slope of the excited OH\* radical profiles, which corresponds to the experimental definition of ignition delay. Chemistry to describe the formation of electronically-excited OH radicals (OH\*) from Hall and Petersen<sup>47</sup> was included in the kinetic model.

Figure 8 presents a comparison between experimental and simulated ignition delay times. The model predicts well the decrease in ignition delay time with increasing pressure as exhibited in Figure 8a. At higher pressures (~4 bar) the agreement with experiments is slightly better (maximum deviation of a factor 1.3) than near atmospheric pressures (maximum deviation of a factor 1.8 at high temperatures). Figures 8b, 8c, and 8d show that the decrease of ignition delay times (near 1 bar) with increasing DMF concentration is well reproduced at  $\Phi = 1.0$ , 1.5, and 0.5, respectively. The overall agreement of model predictions and experimental data is good to satisfactory with similar predicted and measured overall activation energy (slopes in Figure 8) and a maximum deviation in ignition delay times of around a factor of two. For all equivalence ratios, it can be noted that the model-experiment agreement is excellent at lower concentrations (0.25% and 0.5% of DMF in O<sub>2</sub>/Ar) and slightly deteriorates towards higher concentrations (1% of DMF in O<sub>2</sub>/Ar). It is also observed that the model predictions are in somewhat better accord with experiment at rich conditions, where deviations are at most a factor of 1.4, than at lean conditions, where deviations of up to a factor of two exist.

Figure 9 presents sensitivity coefficients obtained through a brute force sensitivity analysis for ignition delay at a representative experimental condition (1% DMF/7.5% O<sub>2</sub>/Ar,  $\phi = 1.0$ , 1474 K, and 1.35 bar). Rate coefficients were increased and decreased by a factor of two and sensitivity coefficients were calculated using:

$$\ln S_i = \frac{\ln\left(\frac{\tau_-}{\tau_+}\right)}{\ln\left(\frac{2k_i}{0.5k_i}\right)}$$

where  $\tau_-$  and  $\tau_+$  are the computed ignition delay times corresponding to, respectively, a decrease and an increase by a factor two of a rate coefficient  $k_i$ .

It can be seen in Figure 9 that the most sensitive reaction promoting overall DMF reactivity is, as expected at high-temperatures, the branching reaction  $\text{H} + \text{O}_2 \rightleftharpoons \text{OH} + \text{O}$ . Aside from reactions of methyl radicals with  $\text{HO}_2$  and  $\text{O}_2$  leading respectively to  $\text{CH}_3\text{O} + \text{OH}$  and  $\text{HCHO} + \text{OH}$ , which slightly promote the reactivity by creating reactive OH radicals from less reactive methyl radicals, all other sensitive reactions pertain to the oxidation chemistry of DMF itself or of its most important decomposition products (acetylene, cyclopentadiene, vinylacetylene, and phenol). Among acetylene reactions within the  $\text{C}_0\text{--C}_2$  reaction base, the addition of O atoms to  $\text{C}_2\text{H}_2$  producing  $\text{CH}_2$  and CO was found to strongly promote reactivity. Once  $\text{CH}_2$  is formed, it mainly reacts with  $\text{O}_2$  yielding  $\text{OH} + \text{CHO}$ . The latter radical predominantly decomposes into H atoms and CO. Consequently, the consumption of one reactive O atom by addition to acetylene, ultimately leads to the formation of two very reactive radicals (an H atom and OH). The reaction  $\text{C}_2\text{H}_3 + \text{O}_2 \rightleftharpoons \text{CH}_2\text{CHO} + \text{O}$  within the  $\text{C}_0\text{--C}_2$  chemistry also appears in the sensitivity analysis as promoting overall reactivity. In addition to the production of a reactive O atom, this pathway leads ultimately to the generation of an H atom or a methyl radical through the unimolecular decomposition of the  $\text{CH}_2\text{CHO}$  radical, all starting from the vinyl radical.

Two of the most sensitive reactions with regards to ignition delay are directly related to the primary mechanism of DMF. H-abstraction by H atoms from DMF, leading to the formation of  $\text{R1C}_6\text{H}_7\text{O} + \text{H}_2$ , is the most sensitive inhibitive reaction. This result is not surprising since H-abstraction competes with the branching reaction  $\text{H} + \text{O}_2 \rightleftharpoons \text{OH} + \text{O}$  and yields a stabilized free radical ( $\text{R1C}_6\text{H}_7\text{O}$ ). However, it is worth noting that this reaction has a promoting effect at pyrolysis conditions. The second sensitive reaction is related to the unimolecular initiation of DMF, described in the potential energy surface given in Figure 5.

As shown in Figure 5,  $M4C_6H_8O$  subsequently decomposes to  $CH_3CO$  and buta-1,2-dien-1-yl ( $C_4H_5-1s$ ) which in turn can react by C-H bond scission to form vinylacetylene and an H atom. Thus, the promoting effect of  $DMF \rightleftharpoons M4C_6H_8O$  is due to the formation of H atoms.

Among all the reactions involving primary species, some processes involving cyclopentadiene and phenol have a significant sensitivity. H-abstraction by H atoms from cyclopentadiene or the combination of H atoms and cyclopentadienyl radicals are largely inhibiting since these two reactions consume H atoms and form stable species (auto-catalytic cycle producing  $H_2$  from two H-atoms). The H-abstraction by OH radicals from phenol also has an inhibiting effect on the conversion of DMF. In fact, this reaction leads to the formation of phenoxy radicals ( $C_6H_5O$ ) which mainly decomposes to CO and cyclopentadienyl radicals.

## 5.2 Pyrolysis product profiles

Lifshitz et al.<sup>20</sup> studied the pyrolysis of DMF in a single-pulse shock tube for temperatures ranging from 1080 to 1350 K and pressures between 2 and 3 bar. They performed chromatographic analyses of the quenched post-shock pyrolysis product gases and detected and quantified twenty products from methane to benzene. In order to compare the DMF model proposed here to the Lifshitz et al. pyrolysis speciation measurements, simulations were carried out using the atmospheric pressure model and SENKIN<sup>45</sup>. Not all data from the Lifshitz et al. study were considered but instead simulations were carried out for twenty experimental conditions uniformly distributed in temperature, residence time, and pressure-space. The results of these twenty simulations were then curve fit to highlight the global trends.

Figure 10 shows a comparison between the simulated consumption of DMF and the experimental results obtained by Lifshitz et al.<sup>20</sup>. In all figures, the points correspond to experimental data while the simulated results are represented by curves and are expressed in

mole percent. The mole percent of a given species is calculated as the ratio of its mole fraction over the sum of the species mole fractions. Note that only species quantified experimentally by Lifshitz et al. were considered in the sum of the simulated species mole fractions. As shown in Figure 10, a very low conversion of DMF is predicted by the kinetic model with respect to the experimental results. Given the extreme changes that the model would require in order to increase the DMF conversion to the levels seen in Figure 10, it is difficult or impossible to explain the lack of conversion/reactivity as simply a failure of the model. Moreover, in the previous section (§5.1), the agreement between measured ignition delay times and model predictions was rather good. This contradiction led us to investigate further the experimental reflected shock temperatures estimated by Lifshitz et al.<sup>20</sup>, in their single-pulse shock tube experiments.

In the Lifshitz et al. study<sup>20</sup> the reflected shock temperatures ( $T_5$ ) were calculated from the extent of the decomposition of 1,1,1-trifluoroethane which served as an internal chemical thermometer standard. Its decomposition, according to reaction (1):



is a first-order unimolecular reaction and was assigned a rate coefficient of  $k = 10^{14.8} \exp(-74115 \text{ (cal mol}^{-1})/RT) \text{ s}^{-1}$  in the Lifshitz et al. study<sup>20</sup>. The temperature behind the reflected shock was then estimated by Lifshitz et al. using:

$$T = -(E/R) \left[ \ln \left( -\frac{1}{At} \ln(1 - \chi) \right) \right] \text{ (K)} \quad (2)$$

where  $t$  is the residence time,  $A$  and  $E$  are the kinetic parameters involved in the previous expression of  $k$  and  $\chi$  is the extent of decomposition defined as:

$$\chi = [\text{CH}_2 = \text{CF}_2]_t / ([\text{CH}_2 = \text{CF}_2]_t + [\text{CH}_3 - \text{CF}_3]_t) \quad (3)$$

The rate coefficient  $k$  given above for reaction (1) was measured by Tsang and Lifshitz in a previous shock tube study, related to the kinetic stability of 1,1,1-trifluoroethane<sup>48</sup>. In this work<sup>48</sup>, two reactions were used again as internal standards to measure  $T_5$ : (1) the elimination



of water from *tert*-butanol and (2) the unimolecular decomposition of perfluorocyclobutane yielding two C<sub>2</sub>F<sub>4</sub>. For each reaction, uncertainty of a factor of three in the rate coefficient at 1200 K was considered by the authors, which in turn implies a similar uncertainty for their measurement of the rate coefficient for reaction (1).

These results led us to calculate, from quantum chemistry methods, the rate coefficient for the decomposition of 1,1,1-trifluoroethane. The CBS-QB3 level of theory was applied to compute energies by using the Gaussian09 software<sup>49</sup>; we refer readers to reference<sup>25</sup> for more information on the methodology used. The derivation of the rate coefficients was performed using the Chemrate software<sup>50</sup>. A high-pressure limit rate coefficient was obtained from canonical transition state theory (equation 4):

$$k_{\infty}(T) = \kappa(T)L \frac{k_B T}{h} \frac{Q_{TS}(T)}{Q_R(T)} \exp\left[-\frac{V^{\ddagger}}{RT}\right], \quad (4)$$

where  $V^{\ddagger}$  is the classical barrier height.  $Q_{TS}(T)$  and  $Q_R(T)$  represent the partition functions calculated, respectively, for the transition state (TS) and the reactant (R);  $\kappa(T)$  is the transmission coefficient; and  $L$  is the statistical factor defined as:

$$L = \frac{\sigma_R \times n_{TS}}{\sigma_{TS} \times n_R} \quad (5)$$

In equation (5),  $\sigma_R$  and  $\sigma_{TS}$  are the external symmetry of, respectively, the reactant and the transition state, while  $n_R$  and  $n_{TS}$  correspond to the number of optical isomers for reactant and transition state, respectively. In the calculation of  $k_{\infty}(T)$ ,  $\sigma_R$  and  $\sigma_{TS}$  were removed beforehand from the rotational partition function to avoid counting them twice. For equation (4), the value of  $L$  is equal to 3 in accordance with the work of Barker et al.<sup>51</sup>. The internal rotation around the C-F bond in CF<sub>3</sub>-CH<sub>3</sub> was treated as an hindered rotor with a barrier height of 3.1 kcal mol<sup>-1</sup> (calculated at the B3LYP-6-311G(d,p) level of theory) and with an internal symmetry of 3.

Tunneling was taken into account for hydrogen transfer with Eckart transmission coefficients. The characteristic length of the Eckart function is obtained from forward and

reverse barrier heights ( $E_1$  and  $E_{-1}$ ) at 0 K along with the imaginary frequency ( $\nu_i$ ) of the transition state using the equations reported by Johnston and Heicklen<sup>52</sup>.

It is noted that the RRKM or non-RRKM character of this reaction is still debated<sup>53-54</sup>, an issue beyond the scope of the present study. In the present work the pressure dependence was taken into account using Chemrate<sup>50</sup> to calculate the rate coefficient at 2.5 bar, corresponding to the mean pressure of the Lifshitz et al. experiments<sup>20</sup>. Table 4 summarizes the results of the theoretical calculations and provides some comparisons with literature data for HF elimination from 1,1,1-trifluoroethane.

The rate coefficient for reaction (1) calculated at the CBS-QB3 level of theory is 3.8 times smaller than the experimental value measured by Tsang and Lifshitz<sup>48</sup> at 2.5 bar and 1200 K, a difference that is slightly beyond the uncertainty given by Tsang and Lifshitz. It is worth noting that pressure falloff cannot account for the temperature disparity. Indeed, at 1200K, the calculated high-pressure limit rate constant is close to  $6.3 \text{ s}^{-1}$ , compared with a calculated rate of  $5.5 \text{ s}^{-1}$  at 2.5 bar (Table 4). The small degree of pressure falloff calculated for this reaction at 1200 K and 2.5 bar is consistent with the RRKM calculations reported by Tsang and Lifshitz. Before computing the corresponding temperatures with the new rate coefficient for reaction (1), we compared to other data available in the literature. To our knowledge, no recent experimental data have been published for reaction (1) in the same temperature range but experimental and theoretical studies were performed at higher temperatures by Kiefer et al.<sup>53</sup> and Giri and Tranter<sup>54</sup>. In the former study, Kiefer et al.<sup>53</sup> reported a high-pressure rate coefficient calculated theoretically at the G3 level of theory (Table 4). The activation energy found by Kiefer et al.<sup>53</sup> is in a very good agreement with our CBS-QB3 value but their A-factor is much greater (factor of 5.8). This difference may partly be explained by the treatment of the internal rotation around the C-C bond (they considered a harmonic oscillator rather than a hindered rotor) but mostly by the use of an overestimated

reaction path degeneracy (*rpd*). Indeed, the value used for the *rpd* by Kiefer et al.<sup>53</sup> (*rpd* = 9) seems questionable, as discussed by Barker et al.<sup>51</sup>. Indeed, Kiefer et al. considered a vibrational model for the torsion and using this approach in equation (5) should lead to a value of three for the *rpd*. Using a *rpd* of three in Kiefer et al. study would lead to correct agreement with the rate coefficient for reaction (1) calculated here (a deviation of a factor of 1.8 at 1800 K, after correction of the Kiefer et al. rate coefficient for *rpd*). In the second study of reaction (1), Giri and Tranter<sup>54</sup> investigated the dissociation of 1,1,1-trifluoroethane behind reflected shock waves using shock tube time-of-flight mass spectrometry. They proposed a rate coefficient for high temperatures (1500-1840 K) and for pressures ranging from 600 to 1200 Torr (Table 4). We estimated the rate coefficient for reaction (1) from RRKM calculations using the same Lennard-Jones parameters and  $\langle \Delta E \rangle_{down}$  as proposed by Giri and Tranter<sup>54</sup> and obtained very good agreement with their experimental rate coefficient (deviation of a factor of 1.3 at 1800 K). These results suggest that our CBS-QB3 rate coefficient is consistent and can be used to re-calculate the “experimental temperatures” of the Lifshitz et al. single-pulse shock tube study<sup>20</sup>. Using relations (2) and (3) and the new rate coefficient for reaction (1) given in Table 4 for 2.5 bar, we computed new temperatures for the Lifshitz et al.<sup>20</sup> DMF pyrolysis experiments (Table 5). It is worth noting that the residence times in the experimental study of Lifshitz et al., vary from 1.8 to 2.3 ms. In the present calculations, a mean residence time for experiments was used ( $t = 2.12$  ms).

As shown in Table 5, we systematically estimated higher temperatures for the “experimental” temperatures of the Lifshitz et al.<sup>20</sup> study, with differences ranging from 40 to 87 K. We derived, from the Table 5 data, a linear correlation (equation 6) between the experimental temperatures ( $T_{exp}$ ) obtained by Lifshitz et al. and the modified temperature ( $T_{corr}$ ) calculated here:

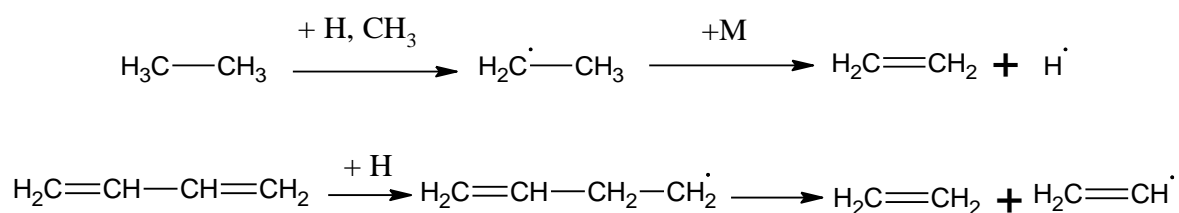
$$T_{corr}(K) = 1.14 \times T_{exp}(K) - 110 \quad (6)$$

Figure 11 shows a comparison of the Lifshitz et al. measurement for DMF conversion with model prediction after the temperature correction; significant improvement in model performance relative to that shown in Figure 10 is observed.

Since the computed pyrolysis conversion of DMF is in good agreement with the experimental results of Lifshitz et al.<sup>20</sup>, we decided to further compare the distribution of predicted pyrolysis products with those measured. Figure 12 shows model predictions compared to measurements for the major products observed by Lifshitz et al. Globally, the agreement is rather satisfactory. To analyze the kinetics responsible for the predicted pyrolysis product distribution, in Figures 13, 14, and 15, reaction flux analyses are given for DMF (Figure 13) and the primary products: cyclohexa-2,4-dien-1-one (M2C<sub>6</sub>H<sub>6</sub>O) and cyclohexa-2,5-dien-1-one (M3C<sub>6</sub>H<sub>6</sub>O) (Figure 14) and 2-methylfuran (Figure 15).

As shown in Figure 12a, the formation of carbon monoxide is very well reproduced by the model, consistent with the conversion of DMF observed in Figure 11 as many of the channels involved in DMF thermal decomposition lead to the formation of carbon monoxide (Figures 13, 14, and 15). From this point of view, CO can be considered a good indicator of the thermal conversion of DMF. The formation of acetylene (Figure 12b) is also satisfactorily represented; however, the ethylene yields (Figure 12d) are somewhat underpredicted by the model, especially for temperatures above 1300 K.

Reaction flux analysis (Figure 13) shows that the formation of C<sub>2</sub>H<sub>4</sub> does not occur from the direct decomposition of DMF or important primary species (Figures 14 and 15). In fact, ethylene is mainly formed from secondary reactions involving C<sub>2</sub>H<sub>6</sub> and 1,3-C<sub>4</sub>H<sub>6</sub> according to:



Both  $C_2H_6$  (Figure 12d) and 1,3- $C_4H_6$  (Figure 12f) are slightly over predicted by the model (especially  $C_2H_6$ ) which could be due to a lack of conversion towards the formation of  $C_2H_4$  within the model.

The methane profile, another important product, is correctly reproduced by the model (Figure 12c). The slight over prediction of methane yields is consistent with the slight over prediction of  $C_2H_6$ , since these two products are both formed from methyl radicals. It is possible that an excessive production of  $CH_3$  within the model could be responsible for the over prediction of both  $CH_4$  and  $C_2H_6$ .

Vinylacetylene ( $C_4H_4$ ) is a key species in DMF decomposition and its yield is very well predicted by the model (Figure 12e). In recent work, Sirjean and Fournet<sup>24</sup> studied, via quantum chemistry calculations, the unimolecular initiation of DMF and they showed that the main decomposition channel leads to the formation of  $C_4H_4$ . The reaction flux analysis for DMF (Figure 13) reveals that this channel, under the present model, is the only way to form vinylacetylene; hence, the good model-experiment agreement for vinylacetylene yields shown in Figure 12e are a partial validation of the previous theoretical calculation. Another key compound is the buta-1,3-diene (1,3- $C_4H_6$ ). As discussed previously the shape of the experimental and predicted profiles for 1,3- $C_4H_6$  (Figure 12f) are in agreement but the model slightly over predicts the yield of buta-1,3-diene. This result is interesting because buta-1,3-diene is mainly formed from primary reactions involving H-addition to DMF, as showed in Figure 13. This route has been recently proposed by Sirjean and Fournet<sup>24</sup> and competes with the well-known *ipso-addition*, leading to 2-methylfuran and  $CH_3$ . The good agreement observed between the experimental and predicted 1,3- $C_4H_6$  profiles, suggests that the proposed channel is pertinent and explains buta-1,3-diene formation under pyrolysis conditions.

The last important species quantified by Lifshitz et al.<sup>20</sup> is cyclopentadiene (Figure 12g). The model over predicts the formation of this species at all temperatures but the shape of the model-predicted profile is in agreement with the measurements. Several channels are involved in the formation of C<sub>5</sub>H<sub>6</sub> but all are related to the thermal decomposition of R1C<sub>6</sub>H<sub>7</sub>O, initially produced by H-abstraction from DMF. For each channel, the first reactions involve the ring opening of R1C<sub>6</sub>H<sub>7</sub>O, followed by an internal H-atom transfer to form R3C<sub>6</sub>H<sub>7</sub>O (Figure 13). From R3C<sub>6</sub>H<sub>7</sub>O, three routes can explain the formation of cyclopentadiene:

- A C<sub>3</sub> ring closure leading to R5C<sub>6</sub>H<sub>6</sub>O. The ring formed can be opened again by β-scission to give a new radical (not shown in Figure 13) which reacts, in turn, by fast CO elimination to produce the stabilized free radical C<sub>5</sub>H<sub>7</sub>Y. C<sub>5</sub>H<sub>7</sub>Y reacts mainly by ring closure to form cyclopent-2-en-1-yl (C<sub>5</sub>H<sub>7</sub>#) which leads to cyclopentadiene by C-H bond fission. Even though this channel represents a minor consumption flux for R3C<sub>6</sub>H<sub>7</sub>O, its contribution to the formation of C<sub>5</sub>H<sub>6</sub> cannot be neglected.

- Figure 13 shows that R3C<sub>6</sub>H<sub>7</sub>O reacts mainly by C<sub>6</sub> ring enlargement to form R4C<sub>6</sub>H<sub>7</sub>O (more than 90% of R3C<sub>6</sub>H<sub>7</sub>O reacts via this channel under the pyrolysis conditions of the Lifshitz et al.<sup>20</sup> study). C-H bond scission represents the most important decomposition channel for R4C<sub>6</sub>H<sub>7</sub>O and leads to the formation of cyclohexa-2,4-dien-1-one (M2C<sub>6</sub>H<sub>6</sub>O). Additionally, two other pathways can contribute to the production of C<sub>5</sub>H<sub>6</sub> from R4C<sub>6</sub>H<sub>7</sub>O. One channel is a ring opening, leading to R9C<sub>6</sub>H<sub>7</sub>O which in turn reacts by CO elimination to form the cyclopent-2-en-1-yl radical (C<sub>5</sub>H<sub>7</sub>#Y). The C<sub>5</sub>H<sub>7</sub>#Y radical mostly undergoes C-H bond fission to form cyclopentadiene. The second channel involves an internal H-atom shift into the ring structure of R4C<sub>6</sub>H<sub>7</sub>O and leads to the production of R6C<sub>6</sub>H<sub>7</sub>O. The ring opening of R6C<sub>6</sub>H<sub>7</sub>O followed by a fast CO elimination (Figure 13), yields to the formation of penta-1,4-dien-1-yl (C<sub>5</sub>H<sub>7</sub>-1s). This radical can react by β-scission to form acetylene and the allyl

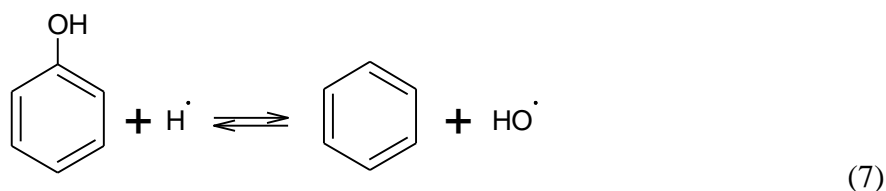
radical ( $C_3H_5$ ) but most of the consumption flux of  $C_5H_7$ -1s goes towards the cyclopent-3-en-1-yl ( $C_5H_7\#$ ) radical, which in turn decomposes into cyclopentadiene and an H atom.

- The last channels in which cyclopentadiene is formed involves the thermal decomposition of cyclohexa-2,4-dien-1-one ( $M2C_6H_6O$ ) and cyclohexa-2,5-dien-1-one ( $M3C_6H_6O$ ). A reaction flux analysis for these two primary products is presented in Figure 14. The majority of  $M2C_6H_6O$  decomposes, *via* a concerted reaction, into phenol;  $C_5H_6$  formation via  $M2C_6H_6O$  decomposition represents only a minor pathway. By contrast, the multi-step decomposition of cyclohexa-2,5-dien-1-one leads to the formation of  $C_5$  species (cyclopentadiene and cyclopentadienyl radicals). The first step involves the formation of a biradical ( $B1C_6H_6O$ ) which reacts by internal addition to form a bicyclic species ( $M4C_6H_6O$ ). A concerted elimination of CO from  $M4C_6H_6O$  leads to the formation of cyclopentadiene. Another production channel for cyclopentadiene is related to the unimolecular initiation of  $M3C_6H_6O$  to form phenoxy ( $C_6H_5O\#$ ) and an H atom. The phenoxy radical decomposes mainly into CO and cyclopentadienyl ( $C_5H_5$ ) which can react by combination with H atoms to form cyclopentadiene. However under the pyrolysis conditions explored here, this last channel is of little importance.

Above we report that phenol is the major product of cyclohexa-2,4-dien-1-one decomposition ( $M2C_6H_6O$ ) and accumulates to high concentrations under the pyrolysis conditions considered by Lifshitz et al.<sup>20</sup>. Even though Lifshitz et al. expected ketenes as pyrolysis products and tried to detect them, they did not mention phenol formation. However, Djokic et al.<sup>21</sup> recently observed phenol formation during DMF pyrolysis. Figure 16 shows the mole fractions for CO, cyclopentadiene, and phenol obtained from modeling predictions at the pyrolysis conditions encountered in the Lifshitz et al. study<sup>20</sup>. The model-predicted phenol yield is a factor of two greater than the predicted cyclopentadiene yield  $C_5H_6$ ; hence, phenol is

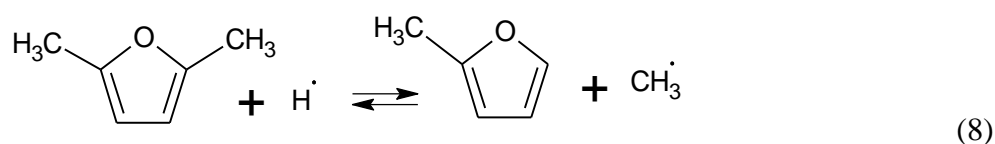
a primary product of the thermal decomposition of DMF under the proposed kinetic model, consistent with the recent results of Djokic et al.<sup>21</sup>.

Several less important minor species were also quantified in the Lifshitz et al. DMF pyrolysis study<sup>20</sup> and some comparisons between experimental and model-predicted results for minor species are shown in Figure 17. The formation of benzene (Figure 17a) is well predicted by the model as is the formation of diacetylene C<sub>4</sub>H<sub>2</sub> (Figure 17c). This latter result is not surprising since C<sub>4</sub>H<sub>2</sub> is produced directly from vinylacetylene (C<sub>4</sub>H<sub>4</sub>) which is also well described by the model. Under the pyrolysis conditions considered, the formation of benzene comes mostly (~70%) from the *ipso* addition of H atoms to phenol (reaction 7):



The good agreement between experimental and predicted benzene profiles further supports the formation of phenol during the pyrolysis of DMF.

In contrast to other results, the simulations largely over predict the formation of 2-methylfuran (by a factor of three) even though the maximum of the curve is well located in temperature space. Figures 14 and 15 describe the main pathways involved in the formation and consumption of 2-methylfuran. The formation of 2-methylfuran species only occurs by the following *ipso* reaction:



A previous theoretical study<sup>24</sup> provides a calculation of the high-pressure rate coefficient for reaction 8 which is consistent with literature data<sup>18</sup>. As described in reference<sup>24</sup>, reaction 8 competes with other channels, mostly the formation of buta-1,3-diene (Figure 13), and is



chemically activated. The pressure dependence of the reaction 8 rate coefficient was taken into account in the kinetic simulations of DMF pyrolysis presented here. Uncertainties in the theoretical calculation of the reaction 8 rate coefficient could induce the over prediction of 2-dimethylfuran yields. However, it is worth noting that the formation of  $C_4H_6$ , which mainly comes from  $DMF + H$ , is well predicted by the model. Slow consumption of 2-methylfuran could partially explain the over predicted 2-methylfuran yields relative to experiment. Figure 15 shows the main consumption pathways for 2-methylfuran. A significant proportion of 2-methylfuran (34%) reacts by *ipso* addition, similar to reaction 8, to form furan and a methyl radical. Unfortunately, furan was not quantified in the experimental study of Lifshitz et al.<sup>20</sup>. Another important channel, accounting for 40% of 2-methylfuran consumption under the Figure 15 conditions, involves the formation of the furan-2-ylmethyl radical (furylCH<sub>2</sub> in Figure 15) which in turn reacts to form intermediates which decompose into CO and n-C<sub>4</sub>H<sub>5</sub>. The n-C<sub>4</sub>H<sub>5</sub> radical entirely reacts by  $\beta$ -scission to form C<sub>2</sub>H<sub>2</sub> and vinyl radicals. For the Figure 15 conditions, this channel accounts for about 80% of the n-C<sub>4</sub>H<sub>5</sub> formation and 30% of the acetylene formation. We previously showed that C<sub>2</sub>H<sub>2</sub> is under predicted, in particular at the higher temperatures of the Lifshitz et al. study<sup>21</sup>, a result that could be consistent with an under prediction of 2-methylfuran conversion to acetylene.

The last interesting channel involved in the consumption of 2-methylfuran is its unimolecular initiations. Figure 15 shows that two unimolecular initiation channels must be considered for 2-methylfuran and that one of them leads to the formation of 1-butyne. In the present model, 1-butyne is only produced by this channel. A comparison of experimental and kinetic model predictions for 1-butyne yields from DMF pyrolysis is given in Figure 17d and clearly shows an under prediction of 1-butyne formation by the model. However, in this case, it seems difficult to connect the under prediction of 1-C<sub>4</sub>H<sub>6</sub> with the conversion of 2-methylfuran. The yield of 1-butyne is well represented at the highest pyrolysis temperatures

(~1400 K) while that of 2-methylfuran is largely over predicted by the model at these conditions. Moreover, the shape of the theoretical curve is not consistent with experimental results, indicating that formation pathways for 1-butyne may be missing from the model. In fact, the thermal decomposition of 2-methylfuran within the model is mostly described based on analogies with the detailed mechanism of DMF developed in this work and the furan mechanism proposed in reference<sup>27</sup>. Several rate coefficients for reactions involving 2-methylfuran have been deduced from structure-reactivity relationships. A more thorough study of 2-methylfuran decomposition is necessary in order to improve prediction of its pyrolysis yields in the present kinetic model.

## 6. Conclusion

A detailed kinetic model describing the oxidation and pyrolysis of 2,5-dimethylfuran (DMF) was developed in a comprehensive and consistent way, based on previous theoretical calculations involving the unimolecular initiations of DMF, reactions of DMF + H, as well as the thermal decomposition of 5-methyl-2-furanylmethyl radical, the most important radical produced from DMF. Specifically, the model includes the decomposition channels of important primary and secondary products such as cyclohexadienones, 2-methylfuran, furan, phenol, cyclopentadiene, vinylacetylene, and others. In addition, shock tube ignition delay time measurements for DMF are reported for the first time. These experimental results were used to validate the model at high-temperature combustion conditions. The model-predicted ignition delay times are in generally good agreement with the experimental findings, with model-experiment deviations of at most a factor of two. The modeling predictions are particularly good at stoichiometric and rich conditions with maximum deviation with experiment of a factor of 1.8 and 1.4, respectively. Sensitivity analysis indicates that, among all reactions having an influence on the conversion of DMF, reactions in the primary

mechanism such as H-abstraction from DMF by H atoms (and to a lesser extent by OH radicals) and the unimolecular initiation resulting in ring opening ( $\text{DMF} \rightarrow \text{M4C}_6\text{H}_8\text{O}$ ) are very sensitive and influence to a large degree the global reactivity at shock tube conditions. Sensitivity analysis also reveals that reactions involving important primary DMF fragments such as cyclopentadiene and phenol can have a substantial influence on the conversion of DMF.

Finally, a comparison between the pyrolysis speciation measurements of Lifshitz et al.<sup>20</sup> and those predicted by the proposed model provided a validation of several theoretical predictions for rate parameters included in the model. However, prior to comparison of model predictions with the Lifshitz et al. speciation measurements, the rate coefficient used to compute the experimental temperatures in the Lifshitz et al. study, via the chemical thermometer technique, was reevaluated using quantum chemistry calculations. Following reevaluation of the Lifshitz et al. experimental temperatures, good agreement between the experimental and predicted conversion of DMF is observed and the predicted distribution of pyrolysis products is satisfactory for most products. A reaction flux analysis carried out at pyrolysis conditions, illustrates the important routes for the formation of specific products. For example, within the context of the proposed model  $\text{C}_4\text{H}_4$  can only be produced by unimolecular initiation (i.e., DMF ring opening,  $\text{DMF} \rightarrow \text{M4C}_6\text{H}_8\text{O}$ ) and the formation of buta-1,3-diene mostly occurs by H-addition to DMF. Reaction flux analysis shows that the primary pyrolysis consumption pathway for DMF begins with an H-abstraction followed by a ring opening and then an H-atom transfer. At this stage of the primary pyrolysis pathway, a ring enlargement process occurs resulting in the formation of a  $\text{C}_6$  ring which, in turn, decomposes into cyclohexadienone or to a lesser extent into the cyclopentadienyl radical. This primary pathway finally leads to the formation of cyclopentadiene, a major product of the Lifshitz et al. study, but more so to the formation of phenol. While phenol was not detected by

Lifshitz et al.<sup>20</sup>, the very recent pyrolysis study of Djokic et al.<sup>21</sup> clearly shows the formation of phenol at similar pyrolysis conditions.

Given that the model reported here is the first comprehensive kinetic model for the oxidation of DMF and that the high-temperature kinetics of DMF are rather complicated due its unique furanic structure, there are surely improvements to be made in the future to the proposed model. However, the model does predict well the global reactivity of DMF at high-temperature combustion conditions, as illustrated by the good agreement with new shock tube ignition delay time measurements, and predicts well the conversion of DMF at pyrolysis conditions and predicts satisfactorily the pyrolysis product distribution. Importantly, the channels proposed in the thermal decomposition of this unsaturated cyclic ether, based mostly on theoretical quantum chemistry calculations, appear to be consistent with experimental observations.

### **Acknowledgments**

The LRGP group was supported by the European Commission (“Clean ICE” ERC Advanced Research Grant). The authors thank M. Olzmann and J. M. Simmie for the helpful discussions within the framework of the COST Action CM0901. The LRGP group was also granted access to the HPC resources of CINES under the allocation 2011086686 made by GENCI (Grand Equipement National de Calcul Intensif).

The Rensselaer group was supported by the U.S. National Science Foundation under Grant CBET-1032453.

## Supporting Information

Ignition delay time measurements for DMF/O<sub>2</sub>/Ar mixtures, name and structure of the species involved in the detailed mechanism, and theoretical data for the reaction CH<sub>3</sub>CF<sub>3</sub> → CH<sub>2</sub>CF<sub>2</sub> + HF are provided in the supporting information. The detailed mechanism is also given in Chemkin Format. This material is available free of charge via the Internet at <http://pubs.acs.org>.

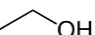
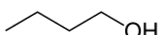
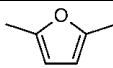
## References

- (1) Román-Leshkov, Y.; Barrett, C. J.; Liu, Z. Y.; Dumesic, J. A. *Nature* **2007**, *447*, 982-985.
- (2) Zhao, H.; Holladay, J. E.; Brown, H.; Zhang, Z. C. *Science* **2007**, *316*, 1597-1600.
- (3) Mascal, M.; Nikitin, E. B. *Angew. Chem.-Int. Edit.* **2008**, *47*, 7924-7926.
- (4) Ezeji, T. C.; Qureshi, N.; Blaschek, H. P. *Curr. Opin. Biotechnol.* **2007**, *18*, 220-227.
- (5) Atsumi, S.; Hanai, T.; Liao, J. C. *Nature* **2008**, *451*, 86-U13.
- (6) Tran, L. S.; Sirjean, B.; Glaude, P.-A.; Fournet, R.; Battin-Leclerc, F. *Energy* **2012**, *43*, 4-18.
- (7) Zhong, S.; Daniel, R.; Xu, H.; Zhang, J.; Turner, D.; Wyszynski, M. L.; Richards, P. *Energy Fuels* **2010**, *24*, 2891-2899.
- (8) Daniel, R.; Tian, G.; Xu, H.; Wyszynski, M. L.; Wu, X.; Huang, Z. *Fuel* **2011**, *90*, 449-458.
- (9) Wu, X.; Daniel, R.; Tian, G.; Xu, H.; Huang, Z.; Richardson, D. *Appl. Energ.* **2011**, *88*, 2305-2314.
- (10) Rothamer, D. A.; Jennings, J. H. *Fuel* **2012**, *98*, 203-212.
- (11) Wu, X. S.; Huang, Z. H.; Jin, C.; Wang, X. G.; Zheng, B.; Zhang, Y. J.; Wei, L. X. *Energy Fuels* **2009**, *23*, 4355-4362.
- (12) Tian, G.; Daniel, R.; Li, H.; Xu, H.; Shuai, S.; Richards, P. *Energy Fuels* **2010**, *24*, 3898-3905.
- (13) Wu, X.; Huang, Z.; Jin, C.; Wang, X.; Wei, L. *Combust. Sci. Technol.* **2011**, *183*, 220-237.
- (14) Wu, X.; Li, Q.; Fu, J.; Tang, C.; Huang, Z.; Daniel, R.; Tian, G.; Xu, H. *Fuel* **2012**, *95*, 234-240.
- (15) Wu, X.; Huang, Z.; Wang, X.; Jin, C.; Tang, C.; Wei, L.; Law, C. K. *Combust. Flame* **2011**, *158*, 539-546.
- (16) Somers, K. P.; Simmie, J. M.; Gillespie, F.; Burke, U.; Connolly, J.; Metcalfe, W. K.; Battin-Leclerc, F.; Dirrenberger, P.; Herbinet, O.; Glaude, P. A.; et al. *Proc. Combust. Inst.* **2012**, doi: 10.1016/j.proci.2012.06.113.
- (17) Simmie, J. M.; Curran, H. J. *J. Phys. Chem. A* **2009**, *113*, 5128-5137.
- (18) Simmie, J. M.; Metcalfe, W. K. *J. Phys. Chem. A* **2011**, *115*, 8877-8888.
- (19) Grela, M. A.; Amorebieta, V. T.; Colussi, A. J. *J. Phys. Chem.* **1985**, *89*, 38-41.
- (20) Lifshitz, A.; Tamburu, C.; Shashua, R. *J. Phys. Chem. A* **1998**, *102*, 10655-10670.
- (21) Djokic, M.; Carstensen, H.-H.; Van Geem, K. M.; Marin, G. B. *Proc. Combust. Inst.* **2012**.
- (22) Friese, P.; Bentz, T.; Olzmann, M.; Simmie, J. M. *European Combustion Meeting* **2011**.
- (23) Friese, P.; Simmie, J. M.; Olzmann, M. *Proc. Combust. Inst.* **2012**, doi: 10.1016/j.proci.2012.05.075.
- (24) Sirjean, B.; Fournet, R. *Proc. Combust. Inst.* **2012**, doi: 10.1016/j.proci.2012.05.027.
- (25) Sirjean, B.; Fournet, R. *J. Phys. Chem. A* **2012**, *116*, 6675-6684.
- (26) Wu, X. S.; Huang, Z. H.; Yuan, T.; Zhang, K. W.; Wei, L. X. *Combust. Flame* **2009**, *156*, 1365-1376.
- (27) Tian, Z.; Yuan, T.; Fournet, R.; Glaude, P. A.; Sirjean, B.; Battin-Leclerc, F.; Zhang, K.; Qi, F. *Combust. Flame* **2011**, *158*, 756-773.
- (28) Battin-Leclerc, F.; Blurock, E.; Bounaceur, R.; Fournet, R.; Glaude, P. A.; Herbinet, O.; Sirjean, B.; Warth, V. *Chem. Soc. Rev.* **2011**, *40*, 4762-4782.

- (29) Moss, J. T.; Berkowitz, A. M.; Oehlschlaeger, M. A.; Biet, J.; Warth, V.; Glaude, P. A.; Battin-Leclerc, F. *J. Phys. Chem. A* **2008**, *112*, 10843-10855.
- (30) Goos, E.; Burcat, A.; Ruscic, B. Extended Third Millennium Thermodynamic Database for Combustion and Air-Pollution Use with updates from Active Thermochemical Tables.; [http://garfield.chem.elte.hu/burcat/BURCAT\\_THR](http://garfield.chem.elte.hu/burcat/BURCAT_THR), 05/23/2012.
- (31) Buda, F.; Bounaceur, R.; Warth, V.; Glaude, P.; Fournet, R.; Battin-Leclerc, F. *Combust. Flame* **2005**, *142*, 170-186.
- (32) Warth, V.; Stef, N.; Glaude, P. A.; Battin-Leclerc, F.; Scacchi, G.; Come, G. M. *Combust. Flame* **1998**, *114*, 81-102.
- (33) Bounaceur, R.; Da Costa, I.; Fournet, R.; Billaud, F.; Battin-Leclerc, F. *Int. J. Chem. Kinet.* **2005**, *37*, 25-49.
- (34) Husson, B.; Bounaceur, R.; Tanaka, K.; Ferrari, M.; Herbinet, O.; Glaude, P. A.; Fournet, R.; Battin-Leclerc, F.; Crochet, M.; Vanhove, G.; al., e. *Combust. Flame* **2012**, *159*, 1399-1416.
- (35) Gueniche, H. A.; Glaude, P. A.; Fournet, R.; Battin-Leclerc, F. *Combust. Flame* **2008**, *152*, 245-261.
- (36) Sarathy, S. M.; Vranckx, S.; Yasunaga, K.; Mehl, M.; Osswald, P.; Metcalfe, W. K.; Westbrook, C. K.; Pitz, W. J.; Kohse-Hoinghaus, K.; Fernandes, R. X.; et al. *Combust. Flame* **2012**, *159*, 2028-2055.
- (37) Sirjean, B.; Fournet, R. *PCCP* **2013**, *15*, 596-611.
- (38) Ingham, T.; Walker, R. W.; Woolford, R. E. *Symp. Int. Comb.* **1994**, *25*, 767-774.
- (39) Muller, C.; Michel, V.; Scacchi, G.; Come, G. M. *J. Chim. Phys. Phys.-Chim. Biol.* **1995**, *92*, 1154-1178.
- (40) Benson, S. W. *Thermochemical Kinetics*, 2<sup>nd</sup> ed.; Wiley: New York, 1976.
- (41) Atkinson, R.; Arey, J. *Chem. Rev.* **2003**, *103*, 4605-4638.
- (42) Nguyen, T. L.; Peeters, J.; Vereecken, L. *J. Phys. Chem. A* **2007**, *111*, 3836-3849.
- (43) Taatjes, C. A.; Osborn, D. L.; Selby, T. M.; Meloni, G.; Trevitt, A. J.; Epifanovsky, E.; Krylov, A. I.; Sirjean, B.; Dames, E.; Wang, H. *J. Phys. Chem. A* **2010**, *114*, 3355-3370.
- (44) Zhu, L.; Bozzelli, J. W. *J. Phys. Chem. A* **2003**, *107*, 3696-3703.
- (45) Kee, R. J.; Rupley, F. M.; Miller, J. A. CHEMKIN II. A Fortran Chemical Kinetics Package for the Analysis of Gas-Phase Chemical Kinetics; Chemkin II ed.; Sandia Laboratories Report, SAND 89-8009B, 1993.
- (46) Chaos, M.; Dryer, F. L. *Int. J. Chem. Kinet.* **2010**, *42*, 143-150.
- (47) Hall, J. M.; Petersen, E. L. *Int. J. Chem. Kinet.* **2006**, *38*, 714-724.
- (48) Tsang, W.; Lifshitz, A. *Int. J. Chem. Kinet.* **1998**, *30*, 621-628.
- (49) Frisch, M. J.; Trucks, G. W.; Schlegel, H. B.; Scuseria, G. E.; Robb, M. A.; Cheeseman, J. R.; Scalmani, G.; Barone, V.; Mennucci, B.; Petersson, G. A.; et al. Gaussian 09, Revision B.01 Wallingford CT, 2009.
- (50) Mokrushin, V.; Tsang, W. Chemrate v.1.5.2 Chemrate v.1.5.2 ed.; v.1.5.2, C., Ed.; Ed. Gaithersburg: U.S.A, 2009.
- (51) Barker, J. R.; Stimac, P. J.; King, K. D.; Leitner, D. M. *J. Phys. Chem. A* **2006**, *110*, 2944-2954.
- (52) Johnston, H. S.; Heicklen, J. *J. Phys. Chem.* **1962**, *66*, 532-533.
- (53) Kiefer, J. H.; Katopodis, C.; Santhanam, S.; Srinivasan, N. K.; Tranter, R. S. *J. Phys. Chem. A* **2004**, *108*, 2443-2450.
- (54) Giri, B. R.; Tranter, R. S. *J. Phys. Chem. A* **2007**, *111*, 1585-1592.
- (55) Allara, D. L.; Shaw, R. *J. Phys. Chem. Ref. Data* **1980**, *9*, 3.
- (56) Wang, H.; Frenklach, M. *Combust. Flame* **1997**, *110*, 173-221.
- (57) Tsang, W. *J. Phys. Chem. Ref. Data* **1991**, *20*, 221 - 273.
- (58) Heyberger, B.; Belmekki, N.; Conraud, V.; Glaude, P. A.; Fournet, R.; Battin-Leclerc, F. *Int. J. Chem. Kinet.* **2002**, *34*, 666-677.
- (59) Harding, L. B.; Klippenstein, S. J.; Georgievskii, Y. *J. Phys. Chem. A* **2007**, *111*, 3789-3801.
- (60) Sirjean, B.; Glaude, P. A.; Ruiz-Lopez, M. F.; Fournet, R. *J. Phys. Chem. A* **2008**, *112*, 11598-11610.
- (61) Battin-Leclerc, F.; Bounaceur, R.; Belmekki, N.; Glaude, P. A. *Int. J. Chem. Kinet.* **2006**, *38*, 284-302.
- (62) Tsang, W.; Hampson, R. F. *J. Phys. Chem. Ref. Data* **1986**, *15*, 1087 - 1279.
- (63) Sendt, K.; Bacskay, G. B.; Mackie, J. C. *J. Phys. Chem. A* **2000**, *104*, 1861-1875.
- (64) Mereau, R.; Rayez, M. T.; Rayez, J. C.; Caralp, F.; Lesclaux, R. *Phys. Chem. Chem. Phys.* **2001**, *3*, 4712-4717.

## Tables

**Table 1.** Fuel properties.

Fuel	gasoline	ethanol	1-butanol	DMF
Structure				
Lower heating value [MJ kg <sup>-1</sup> ]	~42.5	28.9	33.1	33.3
Volumetric energy density [MJ L <sup>-1</sup> ]	~32	20	29	30
Research Octane Number, RON	92-98	109	96	119
Autoignition temperature [K]	520-550	635	616	559
Boiling point [K]	315-480	352	390	366
Water solubility [g L <sup>-1</sup> ]	insoluble	fully miscible	63.2	2.3

**Table 2.** DMF/O<sub>2</sub>/Ar mixtures studied.

Φ	mol% DMF	mol% O <sub>2</sub>	mol% Ar	Pressure [bar]
1	1.0	7.5	91.5	1 and 4
1	0.5	3.75	95.75	1
1	0.25	1.875	97.875	1
0.5	1.0	15	84	1
0.5	0.5	7.5	92	1
1.5	1.0	5	94	1
1.5	0.5	2.5	97	1

**Table 3.** Primary and secondary mechanism of the high-temperature pyrolysis and oxidation of DMF. Units are cm<sup>3</sup>, s, kcal, mol.

Reaction	A	n	E <sub>a</sub>	Footnote	No.
<b>Unimolecular reactions of 2,5-dimethylfuran</b>					
<i>Unimolecular initiations by breaking of a C-C or C-H bond</i>					
DMF = M5F-2yl + CH <sub>3</sub>	2.60 × 10 <sup>16</sup>	0.000	110.532	a	(1)
R1C <sub>6</sub> H <sub>7</sub> O + H (+M) = DMF (+M)	6.55 × 10 <sup>13</sup>	0.070	-0.051	a	(2)
LOW /3.03 × 10 <sup>136</sup> -33.350 55.560 /				a	
TROE /0.163 714 728 5112 /					
DMF-3yl + H (+M) = DMF (+M)	1.0 × 10 <sup>14</sup>	0.000	0.000	b	(3)
LOW /1.0 × 10 <sup>94</sup> -21.840 13.900 /				c	
TROE /0.043 304 60000 5896/					
O <sub>2</sub> /0.4/ B <sub>2</sub> CO/0.75/ CO <sub>2</sub> /1.5/ H <sub>2</sub> O/6.5/ Ar/0.35/					
<i>Unimolecular initiations by H transfer</i>					
DMF = M4C <sub>6</sub> H <sub>8</sub> O (P = 1 bar)	8.62 × 10 <sup>72</sup>	-16.850	108.602	a	(4)
DMF = M4C <sub>6</sub> H <sub>8</sub> O (P = 10 bar)	6.02 × 10 <sup>44</sup>	-8.758	90.804	a	(5)
DMF = M4C <sub>6</sub> H <sub>8</sub> O (high pressure limit)	2.47 × 10 <sup>11</sup>	0.659	68.712	a	(6)
<i>Unimolecular initiations by CH<sub>3</sub> transfer</i>					
DMF = CA1	6.54 × 10 <sup>10</sup>	0.815	81.420	a	(7)

CA1 = CH <sub>3</sub> CHCO + pC <sub>3</sub> H <sub>4</sub>	8.52 × 10 <sup>13</sup>	0.321	31.670	a	(8)
CA1 = M2C <sub>6</sub> H <sub>8</sub> O + pC <sub>3</sub> H <sub>4</sub>	1.02 × 10 <sup>12</sup>	0.272	7.795	a	(9)
CA1 = B1	4.69 × 10 <sup>13</sup>	0.015	30.862	a	(10)
B1 = CH <sub>3</sub> CHCO + pC <sub>3</sub> H <sub>4</sub>	1.67 × 10 <sup>13</sup>	0.115	10.853	a	(11)
B1 = B3 + CO	3.61 × 10 <sup>13</sup>	0.155	10.537	a	(12)
B3 = C <sub>5</sub> H <sub>8</sub>	3.65 × 10 <sup>05</sup>	1.803	7.927	a	(13)
Duplicate					
B3 = C <sub>5</sub> H <sub>8</sub>	7.25 × 10 <sup>06</sup>	1.643	7.530	a	(14)
Duplicate					
B3 = C <sub>5</sub> H <sub>8</sub> -12	7.48 × 10 <sup>04</sup>	2.001	22.542	a	(15)
<i>Unimolecular initiations by ring opening</i>					
DMF = B2	4.85 × 10 <sup>13</sup>	0.489	82.727	a	(16)
B2 = M3C <sub>6</sub> H <sub>8</sub> O	1.41 × 10 <sup>12</sup>	0.049	1.610	a	(17)
B2 = M5C <sub>6</sub> H <sub>8</sub> O	1.60 × 10 <sup>09</sup>	1.006	9.294	a	(18)
B2 = M6C <sub>6</sub> H <sub>8</sub> O	6.74 × 10 <sup>08</sup>	0.892	1.230	a	(19)
M6C <sub>6</sub> H <sub>8</sub> O = C <sub>6</sub> H <sub>6</sub> -12 + H <sub>2</sub> O	1.20 × 10 <sup>08</sup>	1.523	75.786	a	(20)
M6C <sub>6</sub> H <sub>8</sub> O => C <sub>6</sub> H <sub>6</sub> -12 + OH + H	3.61 × 10 <sup>14</sup>	0.000	81.632	a	(21)
M3C <sub>6</sub> H <sub>8</sub> O = M2C <sub>6</sub> H <sub>8</sub> O	9.60 × 10 <sup>08</sup>	1.157	41.665	a	(22)
M5C <sub>6</sub> H <sub>8</sub> O = M7C <sub>6</sub> H <sub>8</sub> O	2.27 × 10 <sup>11</sup>	-0.135	20.545	a	(23)
M5C <sub>6</sub> H <sub>8</sub> O =CH <sub>3</sub> CO + nC <sub>4</sub> H <sub>5</sub>	7.44 × 10 <sup>16</sup>	0.000	86.910	a	(24)
<i>Bimolecular initiations</i>					
DMF + O <sub>2</sub> = R1C <sub>6</sub> H <sub>7</sub> O + HO <sub>2</sub>	4.20 × 10 <sup>12</sup>	0.000	36.800	d	(25)
DMF + O <sub>2</sub> = DMF-3yl + HO <sub>2</sub>	2.00 × 10 <sup>13</sup>	0.000	71.600	d	(26)
DMF + DMF = R1C <sub>6</sub> H <sub>7</sub> O + R1C <sub>6</sub> H <sub>9</sub> O	5.00 × 10 <sup>14</sup>	0.000	54.200	d	(27)

## Decomposition of important products formed by unimolecular initiations of DMF

### *M4C<sub>6</sub>H<sub>8</sub>O decomposition sub-mechanism*

#### *Unimolecular initiations by breaking of a C-C bond*

CH <sub>3</sub> CO+C <sub>4</sub> H <sub>5</sub> -1s(+M)=M4C <sub>6</sub> H <sub>8</sub> O(+M)	2.00 × 10 <sup>13</sup>	0.000	0.000	a	(28)
LOW /6.75 × 10 <sup>83</sup> -19.22 14.980 /					
TROE /0.735 60000 513 100000 /					

#### *Pericyclic reactions*

M4C <sub>6</sub> H <sub>8</sub> O = CH <sub>2</sub> CO + C <sub>4</sub> H <sub>6</sub> -12	9.25 × 10 <sup>08</sup>	1.218	77.070	a	(29)
M4C <sub>6</sub> H <sub>8</sub> O = C <sub>5</sub> H <sub>8</sub> -23 + CO	3.05 × 10 <sup>10</sup>	0.785	89.076	a	(30)
M4C <sub>6</sub> H <sub>8</sub> O = CH <sub>3</sub> CH <sub>3</sub> CHCCH + CO	6.63 × 10 <sup>09</sup>	0.762	77.547	a	(31)
M4C <sub>6</sub> H <sub>8</sub> O = CH <sub>2</sub> CO + C <sub>4</sub> H <sub>6</sub> -1	5.42 × 10 <sup>07</sup>	1.772	65.550	a	(32)

### *M2C<sub>6</sub>H<sub>8</sub>O decomposition sub-mechanism*

#### *Unimolecular initiations by CH<sub>3</sub> transfer*

M2C <sub>6</sub> H <sub>8</sub> O = CA4	7.89 × 10 <sup>10</sup>	0.794	82.894	a	(33)
CA4 = CH <sub>3</sub> CHCO+pC <sub>3</sub> H <sub>4</sub>	1.87 × 10 <sup>14</sup>	0.156	32.181	a	(34)
CA4 = M11C <sub>6</sub> H <sub>8</sub> O	1.04 × 10 <sup>12</sup>	0.254	7.553	a	(35)

#### *Unimolecular initiations by H transfer*

M2C <sub>6</sub> H <sub>8</sub> O = CA3	3.82 × 10 <sup>11</sup>	0.613	69.588	a	(36)
CA3 = M9C <sub>6</sub> H <sub>8</sub> O	7.69 × 10 <sup>12</sup>	0.014	0.323	a	(37)
M9C <sub>6</sub> H <sub>8</sub> O = C <sub>5</sub> H <sub>8</sub> -2 + CO	4.44 × 10 <sup>08</sup>	1.229	37.544	a	(38)
M9C <sub>6</sub> H <sub>8</sub> O = C <sub>5</sub> H <sub>7</sub> -2s + HCO	6.19 × 10 <sup>16</sup>	0.000	68.633	a	(39)

#### *Unimolecular initiations by breaking of a C-H bond*

M2C <sub>6</sub> H <sub>8</sub> O = M2-R1 + H	2.41 × 10 <sup>15</sup>	0.070	86.099	a	(40)
---	-------------------------	-------	--------	---	------



$M2C_6H_8O = M2-R2 + H$	$1.49 \times 10^{15}$	0.070	90.063	a	(41)
<i>Unimolecular initiations by ring opening</i>					
$M2C_6H_8O = M10C_6H_8O$	$9.74 \times 10^{13}$	0.304	82.685	a	(42)
$M2C_6H_8O = M8C_6H_8O$	$1.10 \times 10^{11}$	1.261	90.364	a	(43)
$M10C_6H_8O = M11C_6H_8O$	$9.60 \times 10^{08}$	1.157	41.665	a	(44)

### Propagation reactions of DMF

#### *H-abstractions on the allylic H atom*

$DMF + H = R1C_6H_7O + H_2$	$3.10 \times 10^{05}$	2.700	3.434	e, f	(45)
$DMF + O = R1C_6H_7O + OH$	$3.50 \times 10^{11}$	0.700	5.900	g	(46)
$DMF + OH = R1C_6H_7O + H_2O$	$1.01 \times 10^{04}$	3.133	2.156	h	(47)
$DMF + C_2H_3 = R1C_6H_7O + C_2H_4$	4.42	3.500	4.690	i	(48)
$DMF + HO_2 = R1C_6H_7O + H_2O_2$	$1.90 \times 10^{04}$	2.600	13.900	j	(49)
$DMF + CH_3 = R1C_6H_7O + CH_4$	$6.99 \times 10^{01}$	3.365	7.084	k	(50)
$DMF + C_3H_5 = R1C_6H_7O + C_3H_6$	1.37	3.852	14.370	l	(51)
$DMF + iC_4H_3 = R1C_6H_7O + C_4H_4$	1.37	3.852	14.370	l	(52)
$DMF + iC_4H_5 = R1C_6H_7O + 1,3-C_4H_6$	1.37	3.852	14.370	l	(53)
$DMF + C_5H_5\# = R1C_6H_7O + C_5H_6\#$	1.37	3.852	14.370	l	(54)
$DMF + c-C_5H_7 = R1C_6H_7O + c-C_5H_8$	1.37	3.852	14.370	l	(55)
$DMF + R4C_6H_7O = R1C_6H_7O + c-C_6H_8O$	1.37	3.852	14.370	l	(56)

#### *H-abstractions on the vinylic H atom*

$DMF + H = DMF-3yl + H_2$	$8.20 \times 10^{05}$	2.500	12.280	l	(57)
$DMF + OH = DMF-3yl + H_2O$	$3.93 \times 10^{04}$	2.668	7.692	h	(58)
$DMF + CH_3 = DMF-3yl + CH_4$	1.36	3.500	12.900	l	(59)

#### *Decomposition of R1C6H7O (P=1 bar)*

$R1C_6H_7O = R2C_6H_7O$	$2.26 \times 10^{70}$	-16.301	72.605	m	(60)
$R2C_6H_7O = R3C_6H_7O$	$1.32 \times 10^{39}$	-8.059	33.755	m	(61)
$R3C_6H_7O = R4C_6H_7O$	$5.46 \times 10^{24}$	-3.896	15.278	m	(62)
$R3C_6H_7O = R5C_6H_7O$	$6.90 \times 10^{37}$	-7.501	29.831	m	(63)
$R4C_6H_7O = M2C_6H_6O + H$	$2.92 \times 10^{85}$	-20.593	90.371	m	(64)
$R4C_6H_7O = R6C_6H_7O$	$4.93 \times 10^{79}$	-19.232	84.873	m	(65)
$R4C_6H_7O = R9C_6H_7O$	$7.47 \times 10^{84}$	-20.558	90.140	m	(66)
$R5C_6H_7O = aC_5H_7 + CO$	$3.31 \times 10^{18}$	-2.001	8.335	m	(67)
$R6C_6H_7O = M2C_6H_6O + H$	$6.52 \times 10^{48}$	-10.466	51.890	m	(68)
$R6C_6H_7O = M3C_6H_6O + H$	$1.62 \times 10^{45}$	-9.440	47.815	m	(69)
$R6C_6H_7O = R7C_6H_7O$	$2.02 \times 10^{35}$	-6.601	35.635	m	(70)
$R7C_6H_7O = C_3H_7-1s + CO$	$5.82 \times 10^{29}$	-5.129	29.918	m	(71)
$R9C_6H_7O = c-C_5H_7 + CO$	$2.13 \times 10^{24}$	-3.987	16.361	m	(72)

#### *Decomposition of R1C6H7O (P=10 bar)*

$R1C_6H_7O = R2C_6H_7O$	$2.22 \times 10^{64}$	-14.352	71.907	m	(73)
$R2C_6H_7O = R3C_6H_7O$	$3.83 \times 10^{43}$	-9.056	40.265	m	(74)
$R3C_6H_7O = R4C_6H_7O$	$6.03 \times 10^{26}$	-4.384	18.074	m	(75)
$R3C_6H_7O = R5C_6H_7O$	$8.84 \times 10^{44}$	-9.263	38.103	m	(76)
$R4C_6H_7O = M2C_6H_6O + H$	$8.03 \times 10^{80}$	-18.952	92.217	m	(77)
$R4C_6H_7O = R6C_6H_7O$	$2.50 \times 10^{73}$	-17.156	84.765	m	(78)
$R4C_6H_7O = R9C_6H_7O$	$1.72 \times 10^{80}$	-18.903	91.827	m	(79)
$R5C_6H_7O = aC_5H_7 + CO$	$1.50 \times 10^{22}$	-2.921	12.232	m	(80)
$R6C_6H_7O = M2C_6H_6O + H$	$1.58 \times 10^{57}$	-12.472	61.774	m	(81)
$R6C_6H_7O = M3C_6H_6O + H$	$6.96 \times 10^{52}$	-11.311	57.134	m	(82)
$R6C_6H_7O = R7C_6H_7O$	$1.35 \times 10^{41}$	-7.976	42.911	m	(83)
$R7C_6H_7O = C_3H_7-1s + CO$	$1.18 \times 10^{25}$	-3.554	28.780	m	(84)
$R9C_6H_7O = c-C_5H_7 + CO$	$3.56 \times 10^{27}$	-4.752	20.577	m	(85)

*Decomposition of R1C6H7O (high pressure limit)*

R1C <sub>6</sub> H <sub>7</sub> O = R2C <sub>6</sub> H <sub>7</sub> O	7.70 × 10 <sup>13</sup>	0.157	40.185	m	(86)
R2C <sub>6</sub> H <sub>7</sub> O = R3C <sub>6</sub> H <sub>7</sub> O	3.76 × 10 <sup>06</sup>	1.743	19.124	m	(87)
R3C <sub>6</sub> H <sub>7</sub> O = R4C <sub>6</sub> H <sub>7</sub> O	9.65 × 10 <sup>11</sup>	-0.112	9.074	m	(88)
R3C <sub>6</sub> H <sub>7</sub> O = R5C <sub>6</sub> H <sub>7</sub> O	8.56 × 10 <sup>13</sup>	-0.216	21.332	m	(89)
R4C <sub>6</sub> H <sub>7</sub> O = M2C <sub>6</sub> H <sub>6</sub> O + H	2.82 × 10 <sup>11</sup>	1.020	48.755	m	(90)
R4C <sub>6</sub> H <sub>7</sub> O = R6C <sub>6</sub> H <sub>7</sub> O	8.17 × 10 <sup>08</sup>	1.360	43.750	m	(91)
R4C <sub>6</sub> H <sub>7</sub> O = R9C <sub>6</sub> H <sub>7</sub> O	1.47 × 10 <sup>13</sup>	0.402	49.868	m	(92)
R5C <sub>6</sub> H <sub>7</sub> O = R8C <sub>6</sub> H <sub>7</sub> O	5.31 × 10 <sup>11</sup>	0.208	7.761	m	(93)
R6C <sub>6</sub> H <sub>7</sub> O = M2C <sub>6</sub> H <sub>6</sub> O + H	1.38 × 10 <sup>11</sup>	0.833	32.670	m	(94)
R6C <sub>6</sub> H <sub>7</sub> O = M3C <sub>6</sub> H <sub>6</sub> O + H	8.98 × 10 <sup>10</sup>	0.793	30.741	m	(95)
R6C <sub>6</sub> H <sub>7</sub> O = R7C <sub>6</sub> H <sub>7</sub> O	8.00 × 10 <sup>12</sup>	0.200	25.451	m	(96)
R7C <sub>6</sub> H <sub>7</sub> O = C <sub>3</sub> H <sub>7</sub> -1s + CO	1.36 × 10 <sup>14</sup>	0.150	25.979	m	(97)
R8C <sub>6</sub> H <sub>7</sub> O = aC <sub>5</sub> H <sub>7</sub> + CO	7.84 × 10 <sup>10</sup>	0.619	1.623	m	(98)
R9C <sub>6</sub> H <sub>7</sub> O = R10C <sub>6</sub> H <sub>7</sub> O	9.80 × 10 <sup>08</sup>	0.757	9.697	m	(99)
R10C <sub>6</sub> H <sub>7</sub> O = c-C <sub>5</sub> H <sub>7</sub> + CO	1.24 × 10 <sup>13</sup>	0.239	6.901	m	(100)

*Decomposition of DMF-3yl*

DMF-3yl = CH <sub>3</sub> COCHCCCH <sub>3</sub>	1.10 × 10 <sup>13</sup>	0.306	31.200	n	(101)
CH <sub>3</sub> COCHCCCH <sub>3</sub> = CH <sub>3</sub> CCCHCO + CH <sub>3</sub>	1.14 × 10 <sup>14</sup>	-0.085	58.228	o	(102)
CH <sub>3</sub> CCCHCO + H = CH <sub>2</sub> CCCHCO + H <sub>2</sub>	1.74 × 10 <sup>05</sup>	2.500	2.510	p	(103)
CH <sub>3</sub> CCCHCO + OH = CH <sub>2</sub> CCCHCO + H <sub>2</sub> O	3.00 × 10 <sup>06</sup>	2.000	-0.298	q	(104)
CH <sub>3</sub> CCCHCO + CH <sub>3</sub> = CH <sub>2</sub> CCCHCO + CH <sub>4</sub>	2.20	3.500	5.670	r	(105)
CH <sub>2</sub> CCCHCO = CO + iC <sub>4</sub> H <sub>3</sub>	1.36 × 10 <sup>14</sup>	0.150	25.979	k	(106)
CH <sub>2</sub> CCCHCO + H = CH <sub>3</sub> CCCHCO	5.80 × 10 <sup>13</sup>	0.180	-0.130	s	(107)
CH <sub>3</sub> CCCHCO + H = CH <sub>3</sub> CCCH <sub>2</sub> CO	1.32 × 10 <sup>13</sup>	0.000	3.260	l	(108)
CH <sub>3</sub> CCCH <sub>2</sub> CO = CO + C <sub>4</sub> H <sub>5</sub> -2	2.00 × 10 <sup>13</sup>	0.000	13.800	t	(109)
CH <sub>3</sub> CCCH <sub>2</sub> CO + O <sub>2</sub> = CH <sub>3</sub> CCCHCO + HO <sub>2</sub>	2.60 × 10 <sup>11</sup>	0.000	2.500	l	(110)

*H-addition on DMF (P=1bar)*

DMF + H = MF + CH <sub>3</sub>	5.86 × 10 <sup>25</sup>	-3.180	16.721	e	(111)
DMF + H = CH <sub>3</sub> CO + C <sub>4</sub> H <sub>6</sub> -1,3	2.85 × 10 <sup>67</sup>	-14.870	49.399	e	(112)

*H-addition on DMF (P=10bar)*

DMF + H = MF + CH <sub>3</sub>	2.32 × 10 <sup>22</sup>	-2.270	13.215	e	(113)
DMF + H = CH <sub>3</sub> CO + C <sub>4</sub> H <sub>6</sub> -1,3	1.72 × 10 <sup>53</sup>	-11.040	35.043	e	(114)

*H-addition on DMF (high pressure limit)*

R1C <sub>6</sub> H <sub>9</sub> O = DMF + H	1.69 × 10 <sup>12</sup>	0.459	32.886	e	(115)
DMF + H = MF + CH <sub>3</sub>	1.38 × 10 <sup>14</sup>	0.059	31.433	e	(116)
R1C <sub>6</sub> H <sub>9</sub> O = R3C <sub>6</sub> H <sub>9</sub> O	8.90 × 10 <sup>12</sup>	0.087	22.724	e	(117)
R3C <sub>6</sub> H <sub>9</sub> O = R7C <sub>6</sub> H <sub>9</sub> O	2.18 × 10 <sup>09</sup>	1.211	32.006	e	(118)
R7C <sub>6</sub> H <sub>9</sub> O = CH <sub>3</sub> CO + C <sub>4</sub> H <sub>6</sub> -1,3	1.72 × 10 <sup>13</sup>	0.293	31.199	e	(119)

*OH-addition on DMF (high pressure limit)*

DMF + OH = CH <sub>3</sub> CO + CH <sub>3</sub> CHO + C <sub>2</sub> H <sub>2</sub>	7.95 × 10 <sup>12</sup>	0.000	-0.665	u	(120)
---	-------------------------	-------	--------	---	-------

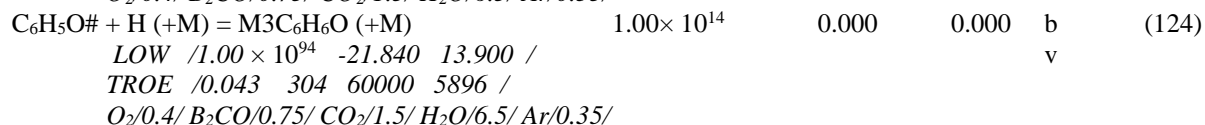
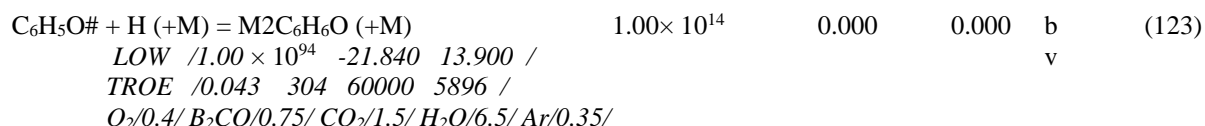
*Terminations for R4C<sub>6</sub>H<sub>7</sub>O with H atoms*

R4C <sub>6</sub> H <sub>7</sub> O + H = M2C <sub>6</sub> H <sub>6</sub> O + H <sub>2</sub>	1.00 × 10 <sup>13</sup>	0.000	0.000	b	(121)
R4C <sub>6</sub> H <sub>7</sub> O + H = c-C <sub>6</sub> H <sub>8</sub> O	1.00 × 10 <sup>14</sup>	0.000	0.000	b	(122)

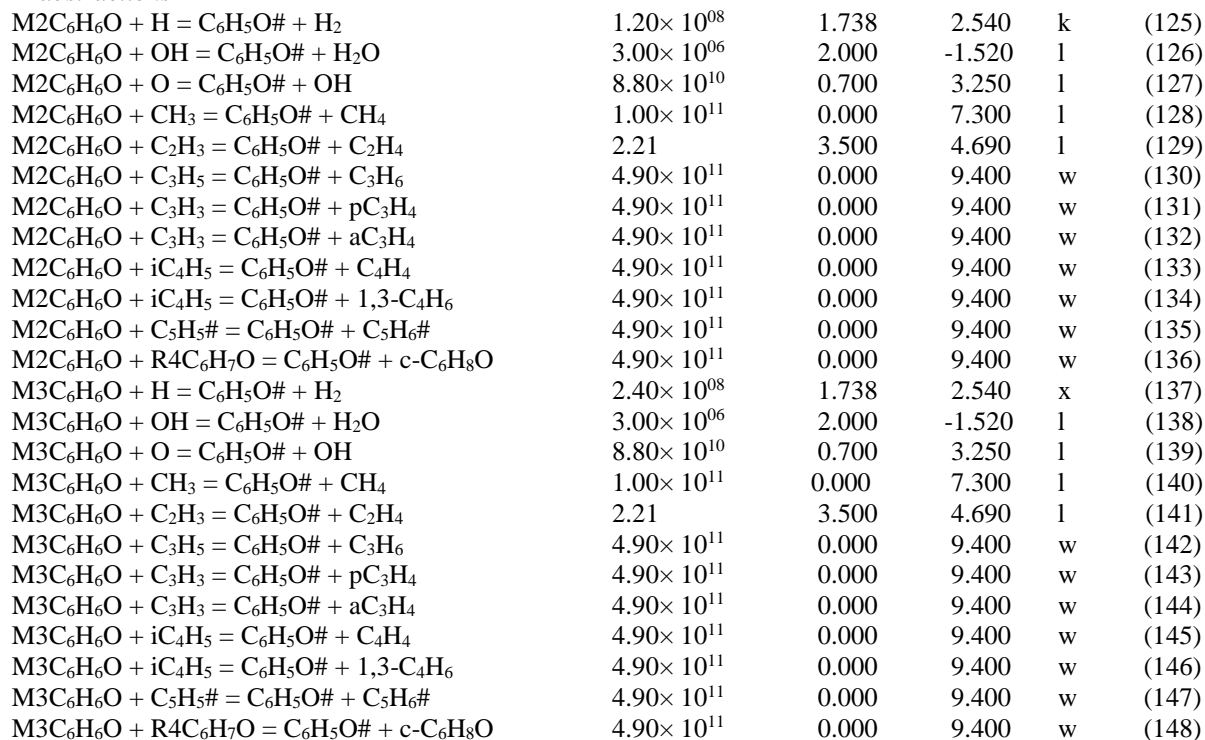
## Decomposition of primary products formed by propagation reactions of DMF

### *M2C<sub>6</sub>H<sub>6</sub>O and M3C<sub>6</sub>H<sub>6</sub>O decomposition sub-mechanisms*

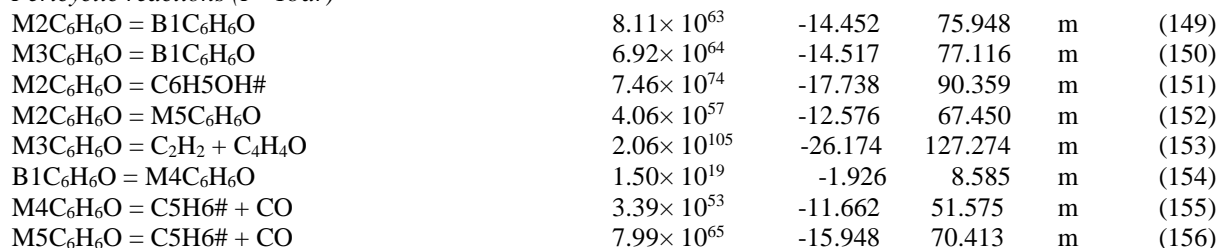
#### *Unimolecular initiations*



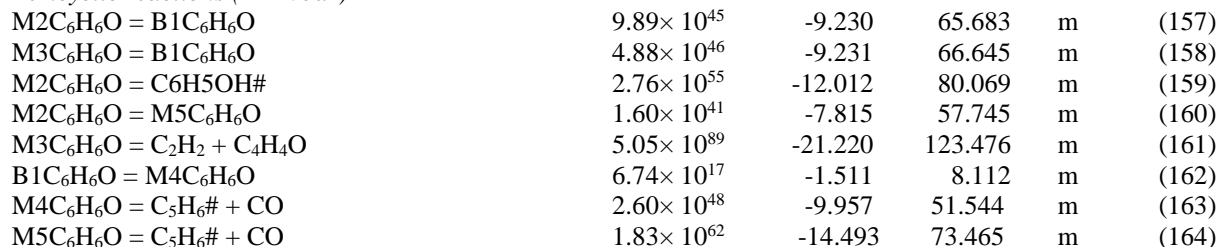
*H-abstractions*



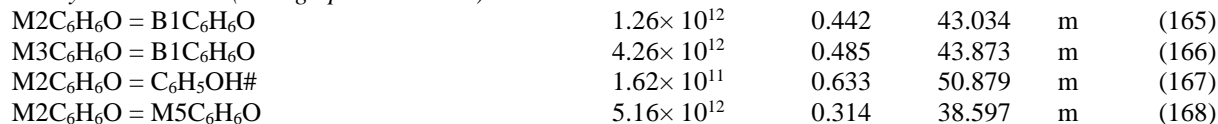
*Pericyclic reactions (P=1bar)*



*Pericyclic reactions (P=10bar)*



*Pericyclic reactions (P=high pressure limit)*



$M3C_6H_6O = C_2H_2 + C_4H_4O$	$8.36 \times 10^{14}$	0.313	76.646	m	(169)
$B1C_6H_6O = M4C_6H_6O$	$5.78 \times 10^{12}$	-0.056	4.606	m	(170)
$M4C_6H_6O = C_5H_6\# + CO$	$1.14 \times 10^{13}$	0.221	29.390	m	(171)
$M5C_6H_6O = C_5H_6\# + CO$	$2.15 \times 10^{11}$	0.231	42.201	m	(172)

### *c-C<sub>6</sub>H<sub>8</sub>O decomposition*

#### *Decomposition of c-C<sub>6</sub>H<sub>8</sub>O*

$c-C_6H_8O + H = H_2 + R4C_6H_7O$	$5.00 \times 10^{04}$	2.500	-1.900	l	(173)
$c-C_6H_8O + OH = H_2O + R4C_6H_7O$	$3.00 \times 10^{06}$	2.000	-1.520	l	(174)
$c-C_6H_8O + CH_3 = CH_4 + R4C_6H_7O$	$1.00 \times 10^{11}$	0.000	7.300	l	(175)
$c-C_6H_8O = C_2H_4 + C_4H_4O$	$8.36 \times 10^{14}$	0.313	76.646	y	(176)

### *Methylfuran decomposition*

#### *Unimolecular initiations of MF*

$MF = CH_3COCHCCH_2$	$2.29 \times 10^{12}$	0.416	70.891	n	(177)
$MF = CH_3CHCCHCHO$	$2.46 \times 10^{11}$	0.659	68.712	z	(178)

#### *Decomposition of CH<sub>3</sub>COCHCH<sub>2</sub> and CH<sub>3</sub>CHCCH<sub>2</sub>*

$CH_3CO + C_3H_3 = CH_3COCHCCH_2$	$4.04 \times 10^{15}$	-0.800	0.0	aa	(179)
$CH_3CHCCHCHO = C_4H_6-1 + CO$	$7.90 \times 10^{14}$	0.000	69.880	n	(180)
$CH_3CHCCHCHO = C_4H_5-1s + CHO$	$7.90 \times 10^{14}$	0.000	69.880	bb	(181)
$CH_3CHCCHCHO + H = CH_3CHCCHCO + H_2$	$4.00 \times 10^{13}$	0.000	4.200	cc	(182)
$CH_3CHCCHCHO + OH = CH_3CHCCHCO + H_2O$	$4.00 \times 10^{13}$	0.000	4.200	cc	(183)
$CH_3CHCCHCHO + CH_3 = CH_3CHCCHCO + CH_4$	$2.00 \times 10^{-06}$	5.600	2.500	cc	(184)
$CH_3CHCCHCO = C_4H_5-1s + CO$	$6.00 \times 10^{12}$	0.340	12.300	k	(185)

#### *H-abstractions*

$MF + H = \text{furyl}CH_2 + H_2$	$0.70 \times 10^{05}$	2.700	3.434	dd	(186)
$MF + O = \text{furyl}CH_2 + OH$	$1.75 \times 10^{11}$	0.700	5.900	g	(187)
$MF + OH = \text{furyl}CH_2 + H_2O$	$5.10 \times 10^{03}$	3.133	2.156	h	(188)
$MF + HO_2 = \text{furyl}CH_2 + H_2O_2$	$9.50 \times 10^{03}$	2.600	13.900	j	(189)
$MF + CH_3 = \text{furyl}CH_2 + CH_4$	$7.00 \times 10^{01}$	3.364	7.084	dd	(190)
$MF + C_3H_5 = \text{furyl}CH_2 + C_3H_6$	$6.86 \times 10^{-01}$	3.852	14.370	k	(191)
$MF + C_5H_5\# = \text{furyl}CH_2 + C_5H_6\#$	$6.86 \times 10^{-01}$	3.852	14.370	ee	(192)
$MF + c-C_5H_7 = \text{furyl}CH_2 + c-C_5H_8$	$6.86 \times 10^{-01}$	3.852	14.370	ee	(193)
$MF + H = M5F-2yl + H_2$	$4.20 \times 10^{05}$	2.500	12.280	n	(194)
$MF + O = M5F-2yl + OH$	$6.00 \times 10^{10}$	0.700	8.960	n	(195)
$MF + OH = M5F-2yl + H_2O$	$1.10 \times 10^{06}$	2.000	2.780	n	(196)
$MF + CH_3 = M5F-2yl + CH_4$	0.68	3.500	12.900	n	(197)

#### *Reactions of furylCH<sub>2</sub>*

$\text{furyl}CH_2 = OCHCHCCH_2$	$2.05 \times 10^{13}$	0.238	40.156	dd	(198)
$OCHCHCCH_2 = OCCHCHCCH_2$	$5.70 \times 10^{10}$	1.000	28.700	l	(199)
$OCHCHCCH_2 = CO + n-C_4H_5$	$1.30 \times 10^{14}$	0.000	22.390	ff	(200)
$\text{furyl}CH_2 + H = MF$	$1.00 \times 10^{14}$	0.000	0.000	b	(201)

#### *Reactions of M5F-2yl*

$M5F-2yl = CH_3CCHCHCO$	$1.80 \times 10^{13}$	0.341	34.510	n	(202)
$CH_3CCHCHCO = pC_3H_4 + CHCO$	$5.30 \times 10^{15}$	-0.234	34.234	n	(203)
$M5F-2yl + H = MF$	$1.00 \times 10^{14}$	0.000	0.000	b	(204)

#### *H-additions*

$MF + H = MFH$	$1.11 \times 10^{45}$	-11.170	6.205	dd	(205)
$MF + H = \text{furan} + CH_3$	$2.32 \times 10^{22}$	-2.270	13.215	dd	(206)
$MFH = CH_3CHCHCHCHO$	$5.37 \times 10^{12}$	0.151	24.172	k	(207)
$CH_3CHCHCHCHO = CH_3CH_2CHCHCO$	$1.95 \times 10^{11}$	0.529	23.465	k	(208)
$CH_3CH_2CHCHCO = C_4H_7-v + CO$	$1.30 \times 10^{14}$	0.000	22.390	ff	(209)

- (a) From Sirjean and Fournet<sup>37</sup>
- (b) Estimated rate coefficients from Allara and Shaw<sup>55</sup>.
- (c) Adapted from Wang and Frenklach<sup>56</sup>.
- (d) Calculated as proposed by Ingham et al.<sup>38</sup>.
- (e) From Sirjean and Fournet<sup>24</sup>.
- (f) Upper limit of the reported rate coefficient (within its uncertainty range).
- (g) Analogy with the reaction  $C_3H_6 + O$ <sup>57</sup>.
- (h) From Simmie and Metcalfe<sup>18</sup>.
- (i) Analogy with the reaction  $C_3H_6 + C_2H_3$ <sup>57</sup>.
- (j) Analogy with the reaction  $C_3H_6 + HO_2$ <sup>57</sup>.
- (k) This work, CBS-QB3, following the computational method described in<sup>37</sup>
- (l) Calculated using reaction rate rules proposed by Heyberger et al.<sup>58</sup>.
- (m) From Sirjean and Fournet<sup>25</sup>
- (n) Estimated from analogy with furan<sup>27</sup>.
- (o) This work, CBS-QB3//MP2/6-31G(d), following the computational method described in<sup>25</sup>.
- (p) Analogy with the reaction  $C_3H_6 + H$ <sup>57</sup>.
- (q) Analogy with the reaction  $C_3H_6 + OH$ <sup>57</sup>.
- (r) Analogy with the reaction  $C_3H_6 + CH_3$ <sup>57</sup>.
- (s) Analogy with the reaction  $C_3H_5 + H$ <sup>59</sup>.
- (t) Based on the correlation proposed by Sirjean et al.<sup>60</sup>.
- (u) Estimated, rate coefficient based on furan + OH from Atkinson<sup>41</sup>.
- (v) Analogy with phenoxy + H<sup>61</sup>.
- (w) Analogy with phenol + cyclopentadienyl radical from Tian et al.<sup>27</sup>.
- (x) Analogy with reaction (125).
- (y) Analogy with the reaction (169).
- (z) Analogy with reaction (6).
- (aa) Analogy with the reaction  $CH_3 + CH_3CO$  from Tsang and Hampson<sup>62</sup>.
- (bb) Analogy with the furan mechanism from Sendt et al.<sup>63</sup>.
- (cc) Analogy with the reactions of  $CH_3CHO$  from Tian et al.<sup>27</sup>.
- (dd) Analogy with the reactions of DMF.
- (ee) Analogy with reaction (190).
- (ff) Analogy with the reaction  $C_2H_3CO = C_2H_3 + CO$  from Mereau et al.<sup>64</sup>.

**Table 4.** Rate coefficients calculated in this work for the HF elimination from CF<sub>3</sub>CH<sub>3</sub> compared with literature data.

Reference	A (s <sup>-1</sup> )	n	E (kcal mol <sup>-1</sup> )	k <sub>(1200K)</sub> s <sup>-1</sup>	k <sub>(1800K)</sub> s <sup>-1</sup>
Tsang and Lifshitz <sup>20</sup> (k <sub>2.5bar</sub> ) <sup>a</sup>	6.31x10 <sup>14</sup>	0	74.00	21.0	
This work <sup>b</sup> (k <sub>2.5bar</sub> )	6.17x10 <sup>13</sup>	0	71.66	5.5	
Kiefer et al. <sup>53</sup> (k <sub>∞</sub> ) <sup>c</sup>	1.58 x10 <sup>15</sup>	0	75.03		1.2 x10 <sup>6</sup>
This work (k <sub>∞</sub> )	2.70x10 <sup>14</sup>	0	74.83	6.3	
Giri and Tranter <sup>54</sup> (k <sub>1bar</sub> ) <sup>d</sup>	3.24 x10 <sup>44</sup>	-9.34	78.50		3.8x10 <sup>4</sup>
This work <sup>e</sup> (k <sub>1bar</sub> )	3.10x10 <sup>55</sup>	-11.905	99.31		4.8x10 <sup>4</sup>

**Table 5:** Reflected shock temperatures (T<sub>5</sub>) calculated with the rate coefficients proposed by Tsang et al.<sup>48</sup> (used in the study of Lifshitz et al.<sup>20</sup>) and rate coefficients from this work for the decomposition of 1,1,1-trifluoroethane.

$\chi$	Residence time <i>t</i> (s)	T <sub>exp</sub> (K)	T <sub>corr</sub> (K)	$\Delta T$ (K) =T <sub>corr</sub> -T <sub>exp</sub>
		<i>From Lifshitz et al.</i> <sup>20</sup>	<i>This work</i>	
0.99	0.00212	1411	1498	87
0.9	0.00212	1375	1456	82
0.8	0.00212	1357	1436	79
0.7	0.00212	1343	1419	77
0.6	0.00212	1330	1404	75
0.5	0.00212	1317	1389	73
0.4	0.00212	1302	1373	70
0.3	0.00212	1286	1354	68
0.2	0.00212	1266	1331	65
0.1	0.00212	1234	1295	61
0.001	0.00212	1069	1110	40

<sup>a</sup>Experimental study performed over the temperature range 1070-1370 K and pressures between 2 and 4 atm

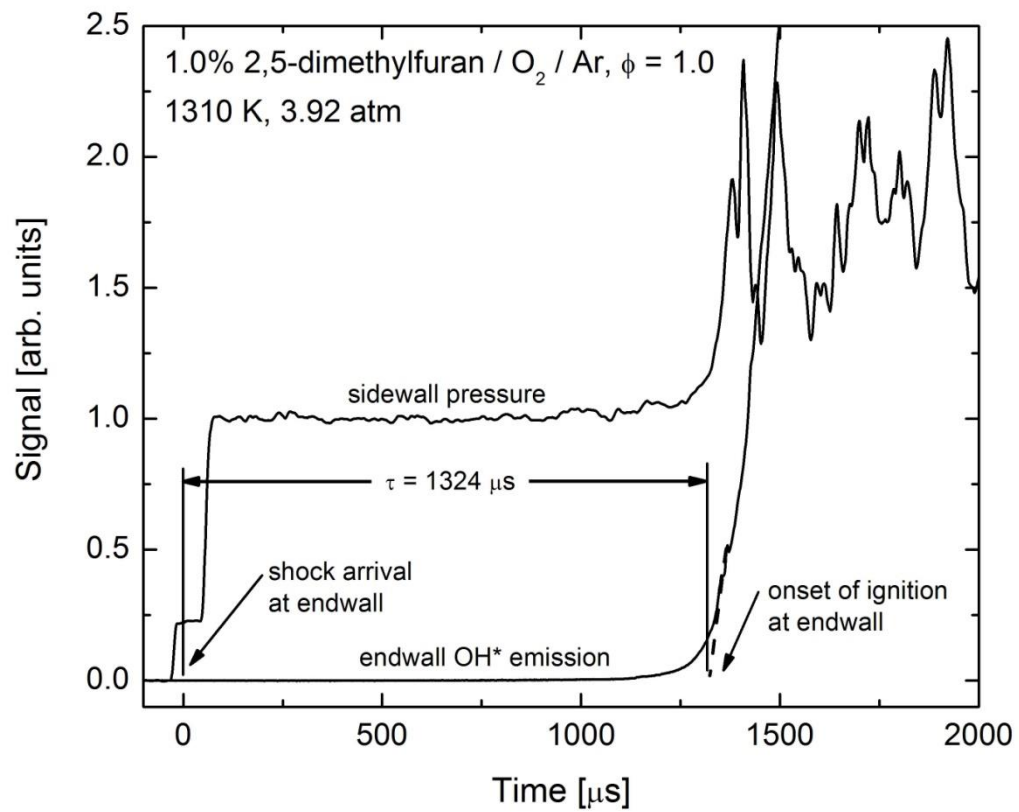
<sup>b</sup> Obtained from RRKM calculations between 1000 and 1500 K using Ar as buffer gas ( $\sigma=3.54\text{\AA}$  and  $\epsilon/k_B=39.95$  K) and  $\langle\Delta E\rangle_{\text{down}}=750\text{cm}^{-1}$  as proposed in reference (54)

<sup>c</sup> Experimental study performed at very high temperatures (1600-2400K) and pressures between 15-550 Torr

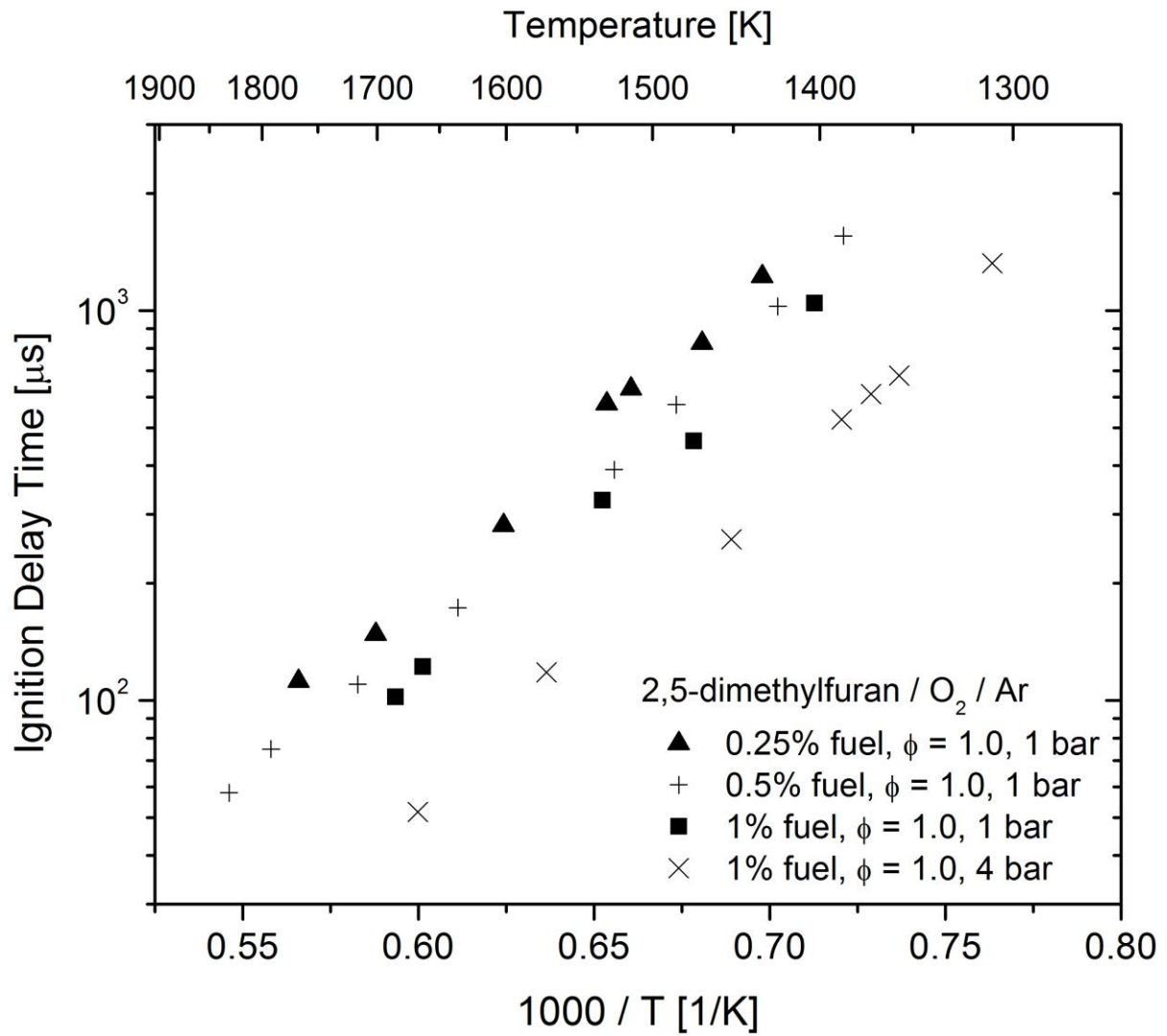
<sup>d</sup> Experimental study performed over the temperature range 1500 and 1840 K and for pressures between 600 and 1200 Torr.

<sup>e</sup> Calculated from RRKM calculations between 1000 and 2000K using neon as buffer gas ( $\sigma=2.82\text{\AA}$  and  $\epsilon/k_B=32.8$  K) and  $\langle\Delta E\rangle_{\text{down}}=750\text{cm}^{-1}$  as proposed in reference (54).

## Legends

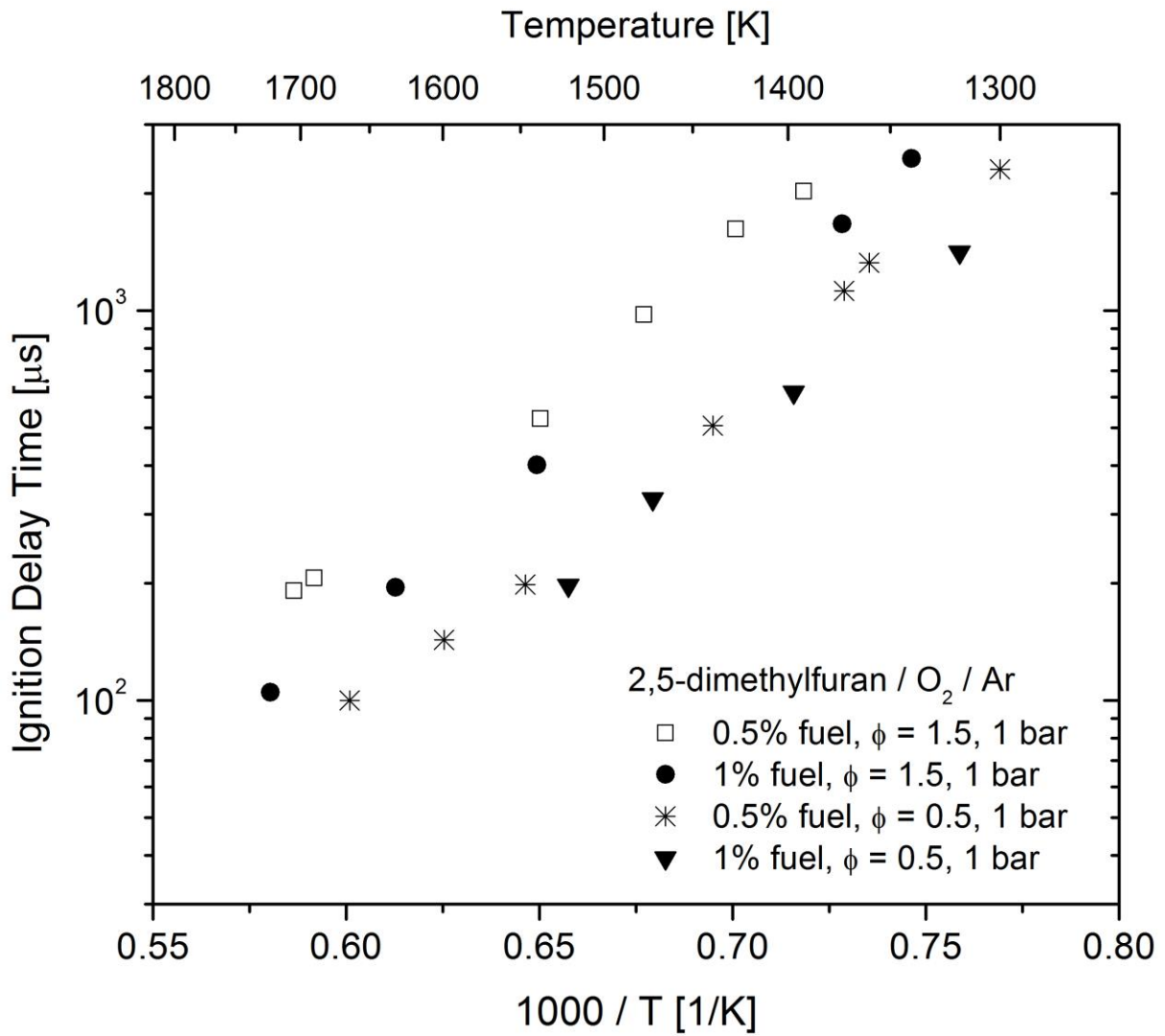


**Figure 1.** Example ignition delay time measurement for a 1.0/7.5/91.5 mol% DMF/O<sub>2</sub>/Ar mixture ( $\phi = 1.0$ ) at reflected shock conditions of 1310 K and 3.92 atm. Ignition delay time measured was 1324  $\mu\text{s}$ .

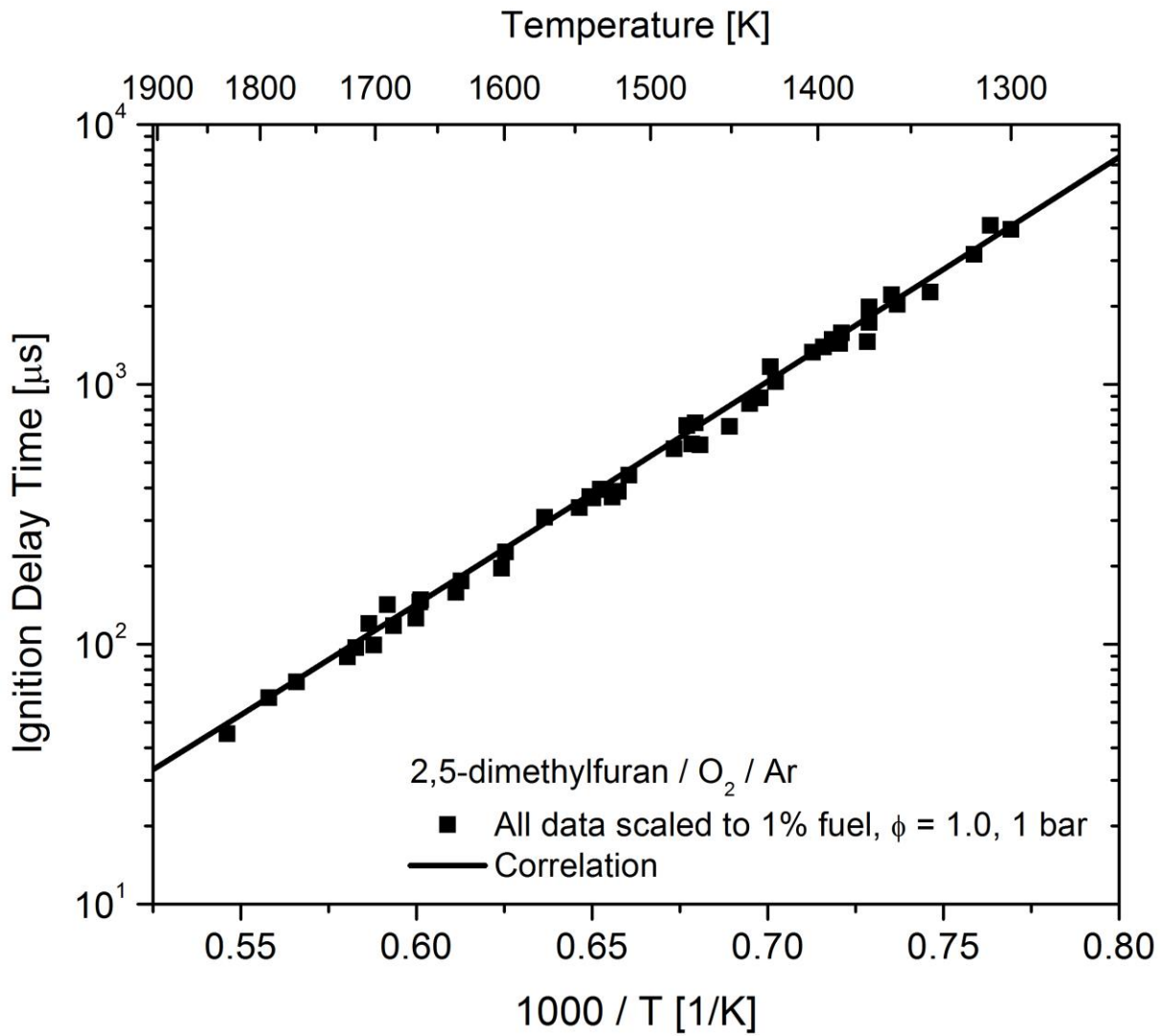


**Figure 2.** Ignition delay time measurements for DMF/O<sub>2</sub>/Ar mixtures at  $\phi = 1.0$  and 1 and 4 bars.

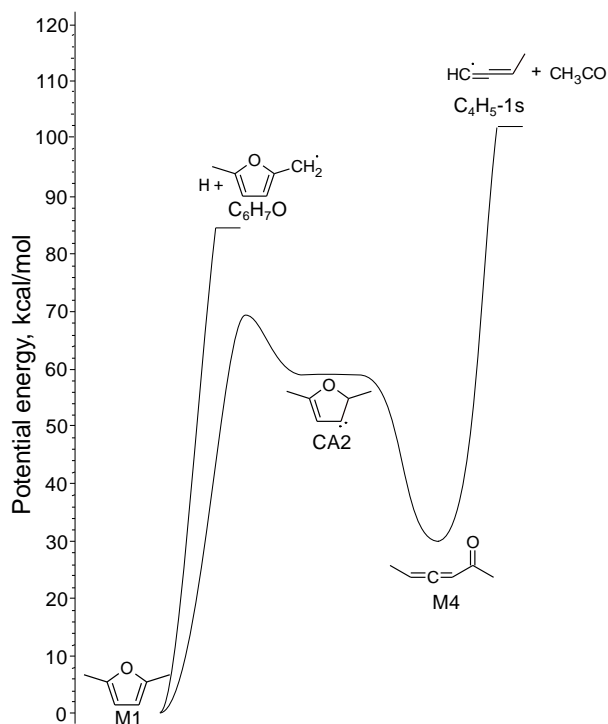




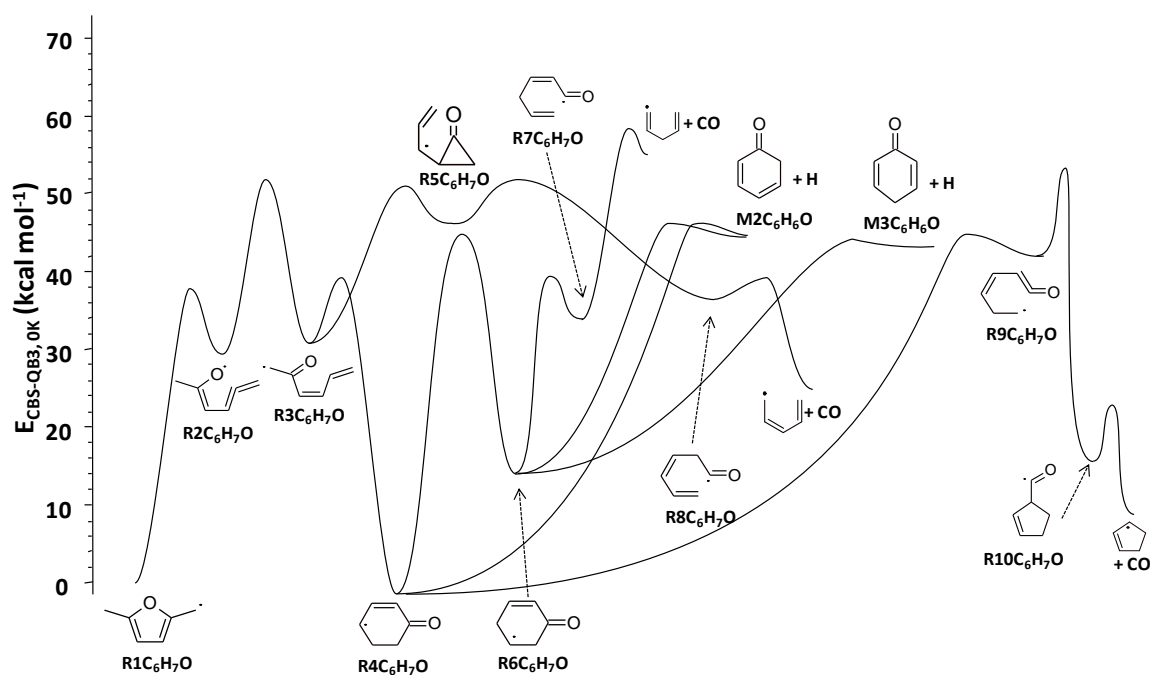
**Figure 3.** Ignition delay time measurements for DMF/O<sub>2</sub>/Ar mixtures at  $\phi = 0.5$  and  $1.5$  and  $1$  bar.



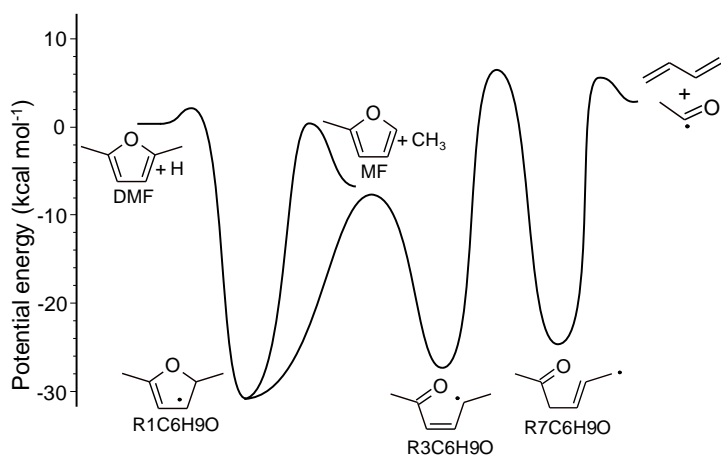
**Figure 4.** All measured ignition delay times correlated to 1% DMF,  $\phi = 1.0$ , and 1 bar using the correlation given in the text.



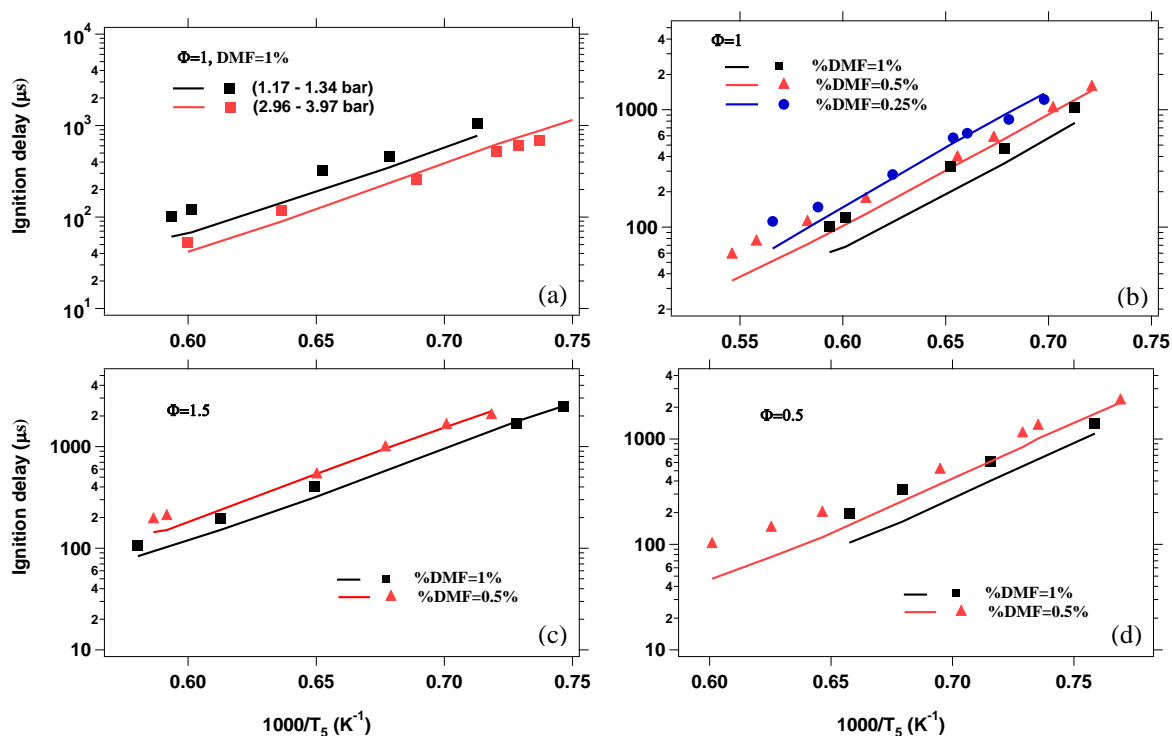
**Figure 5.** Potential energy of the unimolecular decomposition of DMF, adapted from Sirjean and Fournet<sup>37</sup>. Energy at 0 K computed using the CBS-QB3 method.



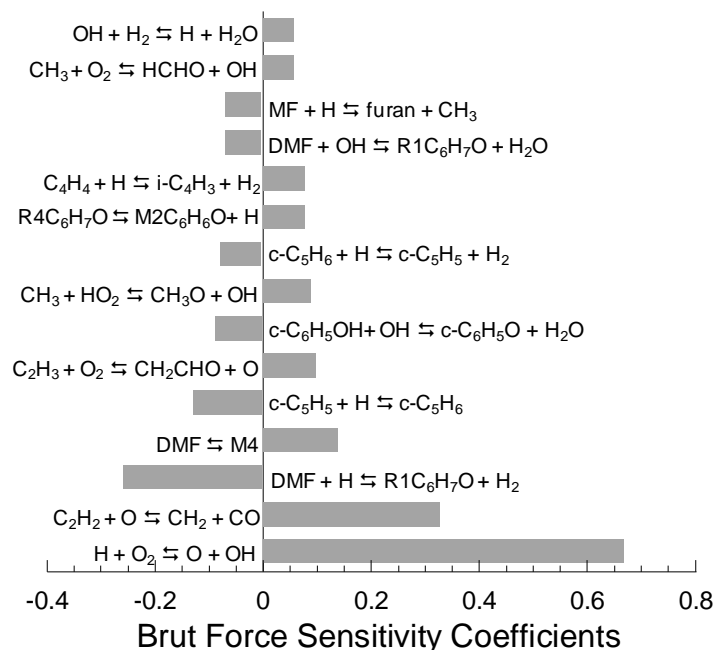
**Figure 6.** Potential energy of the unimolecular decomposition of R1C<sub>6</sub>H<sub>7</sub>O, adapted from Sirjean and Fournet<sup>25</sup>. Energy at 0 K computed using the CBS-QB3 method.



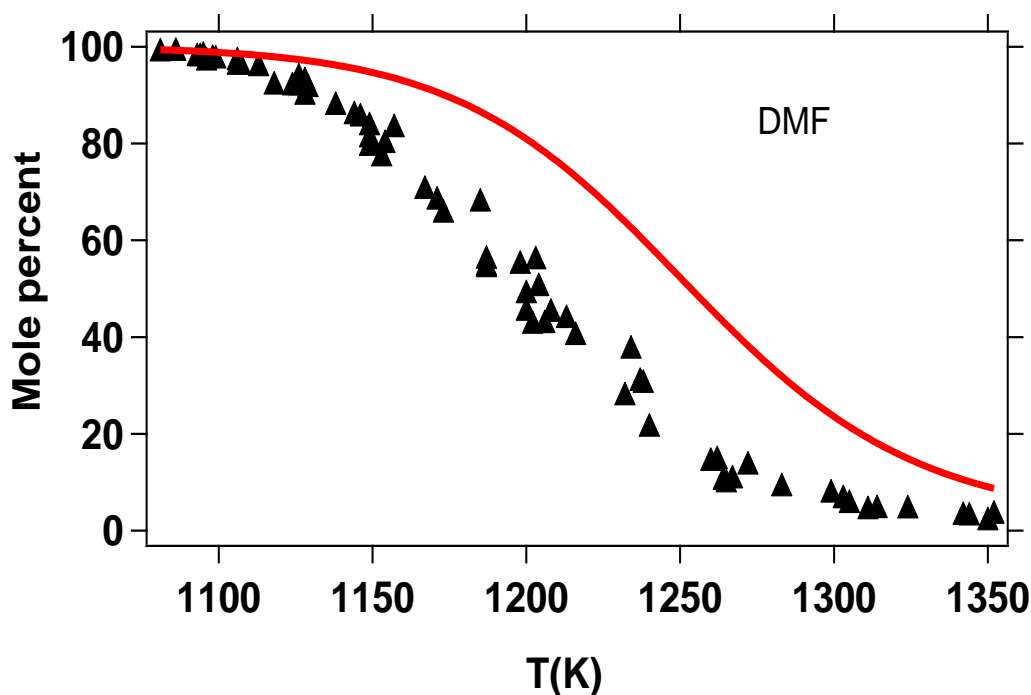
**Figure 7.** Potential energy for the addition an H atom to DMF, adapted from Sirjean and Fournet<sup>24</sup>. Energy at 0 K computed using the CBS-QB3 method.



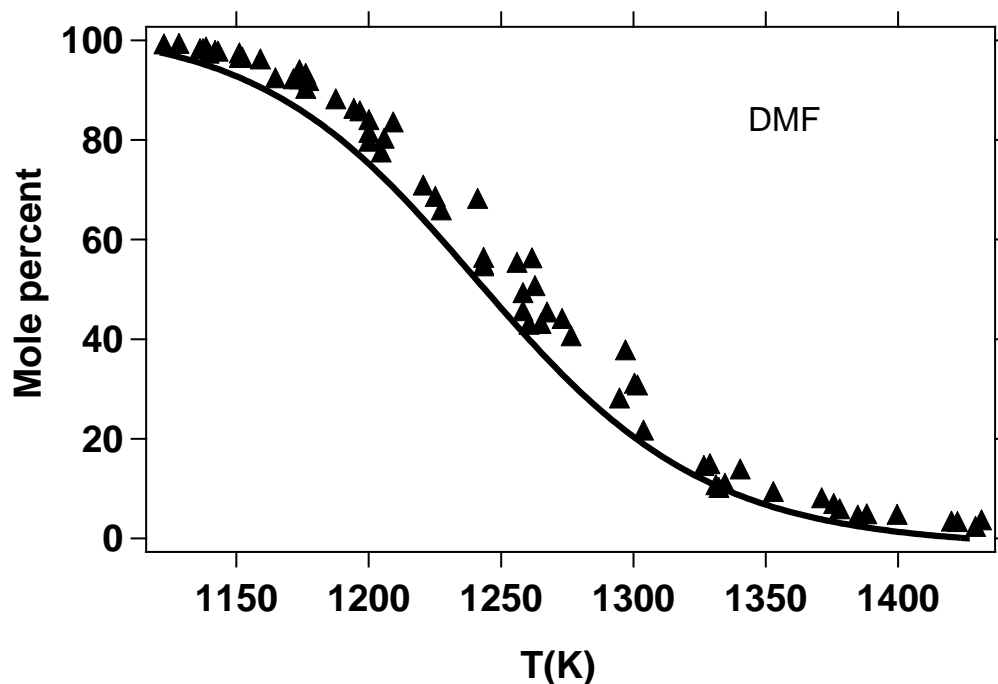
**Figure 8.** Comparison of experimental (points) and model-predicted (solid lines) ignition delay times. (a) 1% DMF in O<sub>2</sub>/Ar at  $\phi = 1$  and  $\sim 1$  and  $\sim 4$  bar; (b) 1%, 0.5%, and 0.25% DMF in O<sub>2</sub>/Ar at  $\phi = 1$  and  $\sim 1$  bar; (c) 1% and 0.5% DMF in O<sub>2</sub>/Ar at  $\phi = 1.5$  and  $\sim 1$  bar; (d) 1% and 0.5% DMF in O<sub>2</sub>/Ar at  $\phi = 0.5$  and  $\sim 1$  bar.



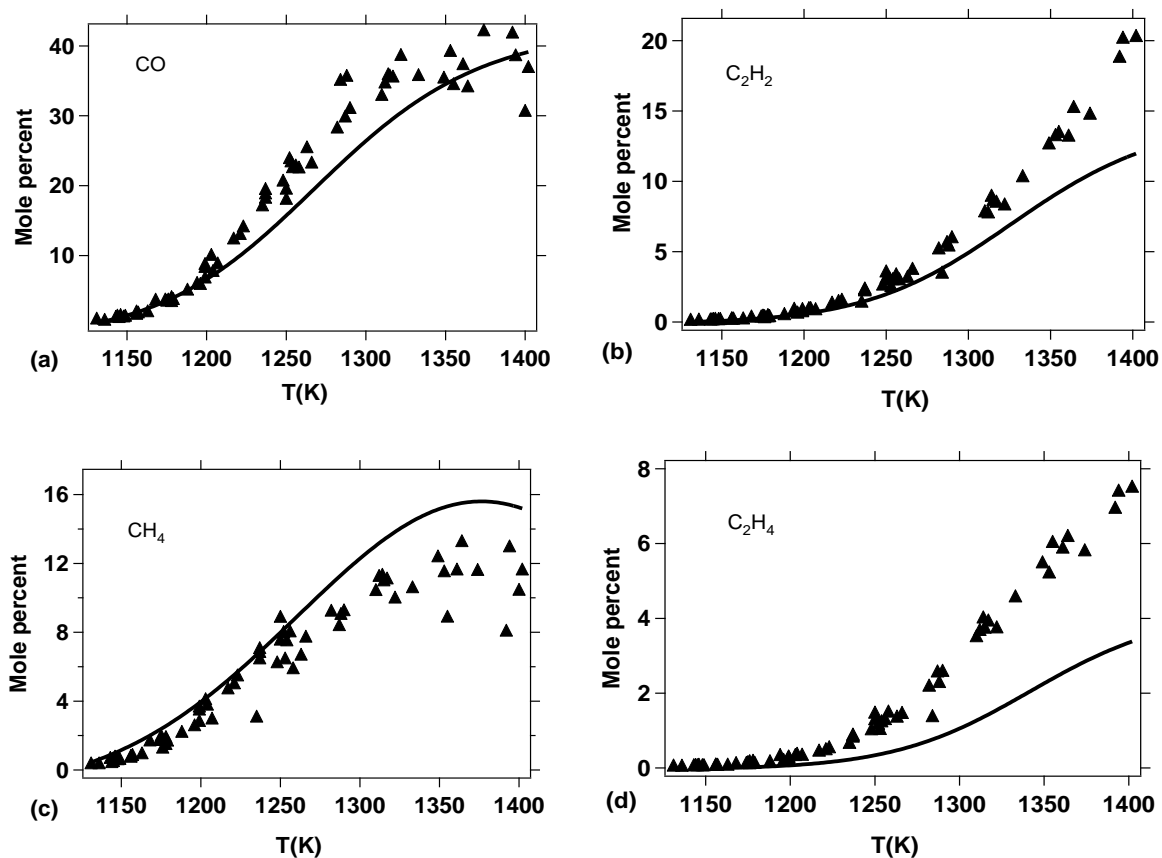
**Figure 9.** Logarithmic sensitivity coefficients (see text) for ignition delay time with respect to reaction rate parameters, computed for 1% DMF / 7.5 % O<sub>2</sub> in Ar at  $\phi = 1.0$ ,  $T_5 = 1474$  K, and  $P_5 = 1.35$  bar.

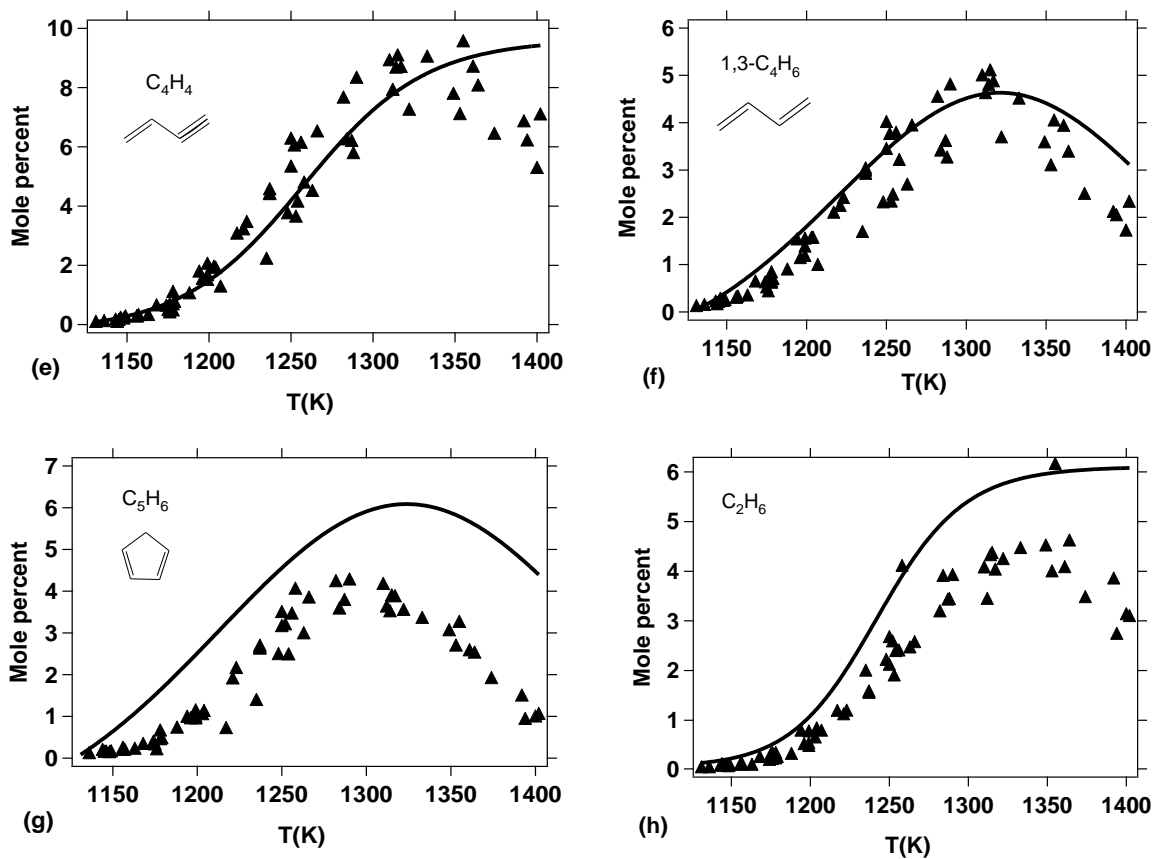


**Figure 10.** Lifshitz et al.<sup>20</sup> single-pulse shock tube pyrolysis measurements for DMF conversion, reported in terms of mole percent DMF in the product gases (see text), with comparison to predictions from the present kinetic model. The post-shock temperatures given (x-axis) are those predicted by Lifshitz et al.<sup>20</sup>.

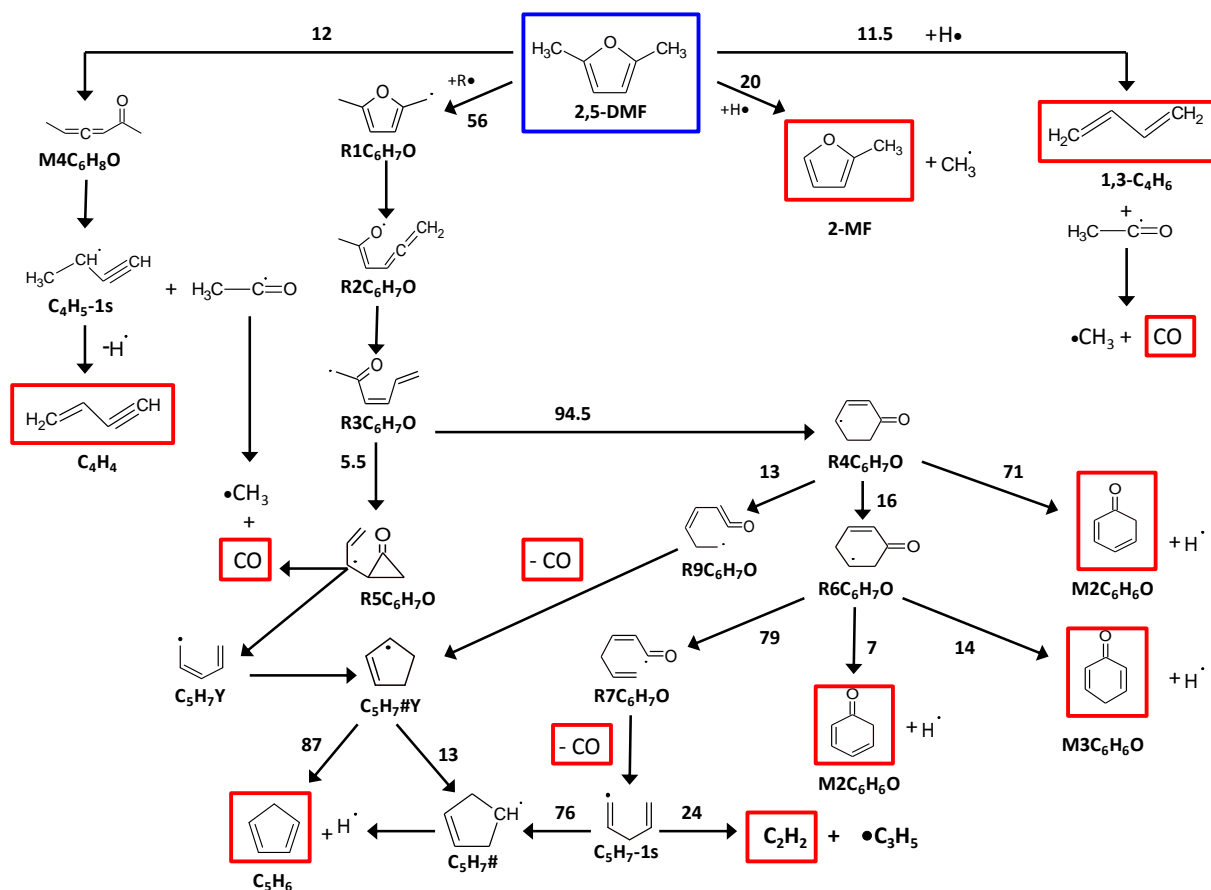


**Figure 11.** Lifshitz et al.<sup>20</sup> single-pulse shock tube pyrolysis measurements for DMF conversion, reported in terms of mole percent DMF (see text) in the product gases, with comparison to predictions from the present kinetic model. The post-shock temperatures given (x-axis) for the Lifshitz et al. experiments are those predicted in the present study using refined rate coefficients described in Table 4.



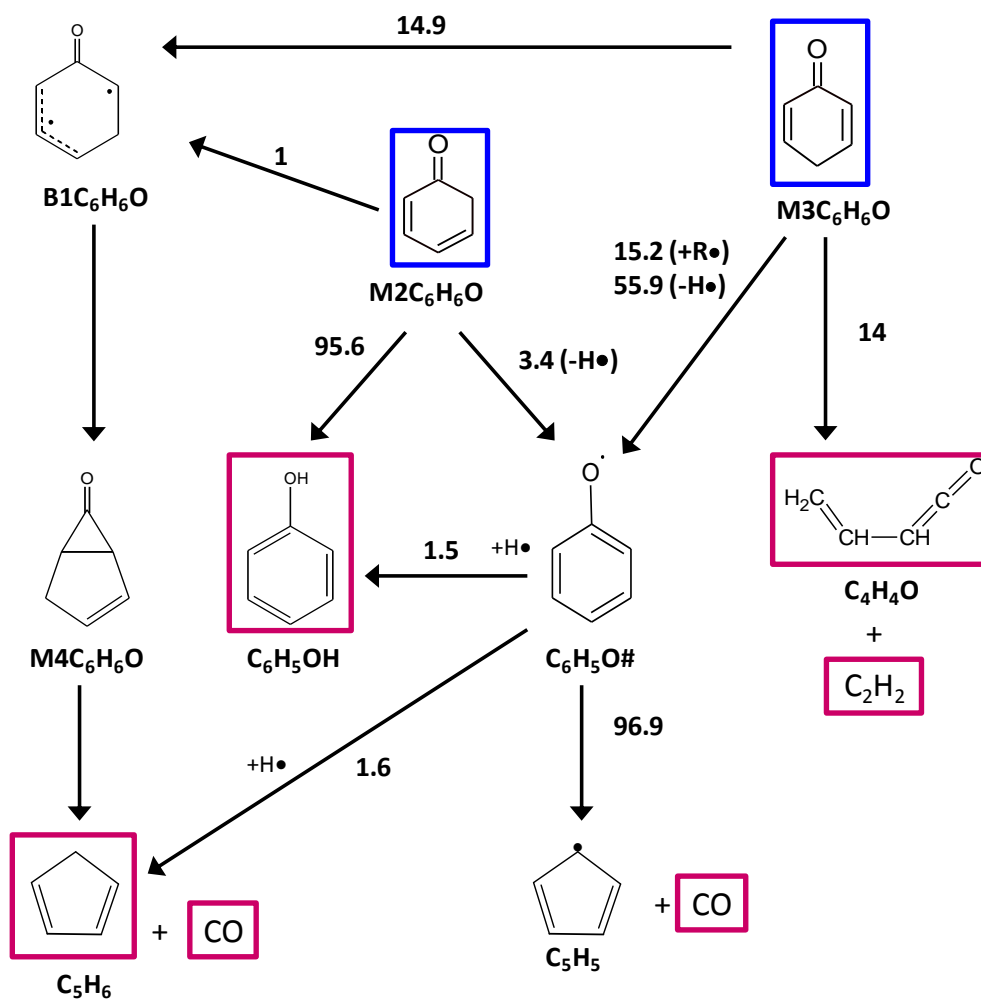


**Figure 12.** Measured pyrolysis products from the Lifshitz et al.<sup>20</sup> study with comparison to predictions from the present kinetic model (see text for mole percent definition).

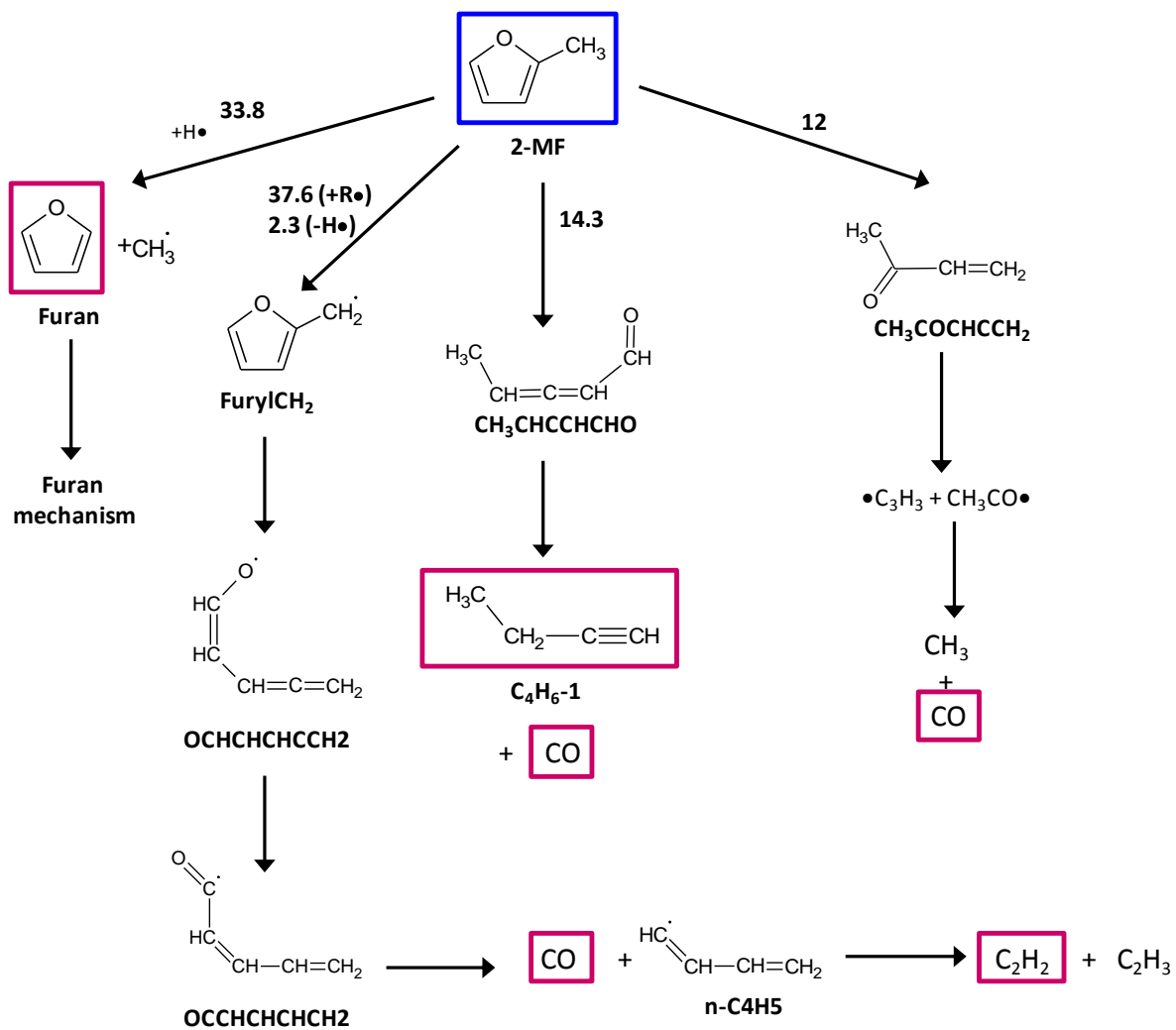


**Figure 13.** Reaction flux analysis for DMF pyrolysis; conditions: 1300 K, 2 bar, residence time of 1 ms corresponding to 47% DMF conversion. Given reaction fluxes (numbers associated with arrows) are relative to the consumption of a given species and are expressed in percent.

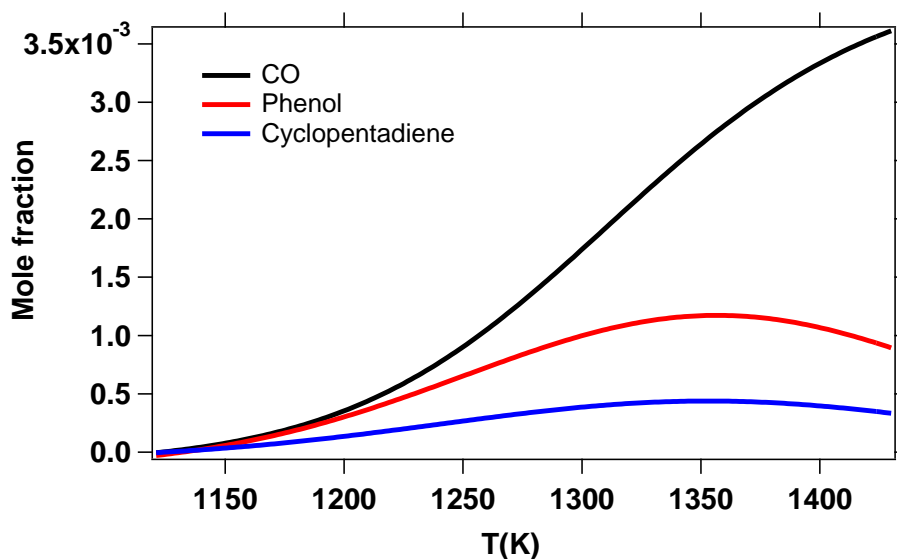




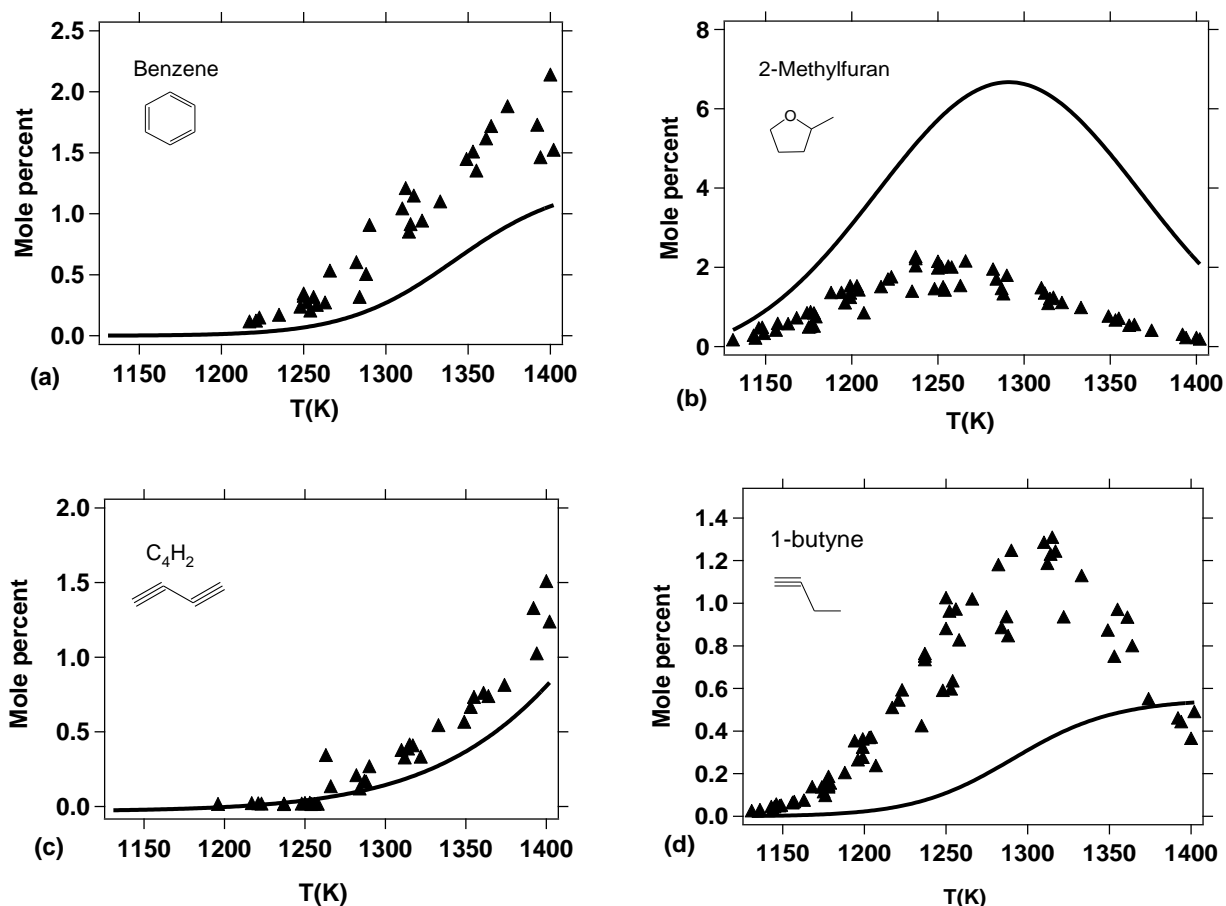
**Figure 14.** Reaction flux analysis for cyclohexadienone (M2C<sub>6</sub>H<sub>6</sub>O and M3C<sub>6</sub>H<sub>6</sub>O) during DMF pyrolysis; conditions: 1300 K, 2 bar, residence time of 1 ms corresponding to 47% DMF conversion. Given reaction fluxes (numbers associated with arrows) are relative to the consumption of a given species and are expressed in percent.



**Figure 15.** Reaction flux analysis for 2-methylfuran during DMF pyrolysis; conditions: 1300 K, 2 bar, residence time of 1 ms corresponding to 47% DMF conversion. Given reaction fluxes (numbers associated with arrows) are relative to the consumption of a given species and are expressed in percent.



**Figure 16.** Predicted phenol, CO, and cyclopentadiene mole fractions under batch reactor conditions (2 bar, 0.5% DMF dilute in argon, residence time of 2 ms).



**Figure 17.** Experimental (points) and model-predicted (lines) minor species yields (in mole percent) observed and quantified in the single-pulse shock tube study of Lifshitz et al.<sup>20</sup>.

## TOC graphic

