



**HAL**  
open science

## Tomato response traits to pathogenic *Pseudomonas* species: Does nitrogen limitation matter?

Mathilde Royer, Romain Larbat, Jacques Le Bot, Stephane Adamowicz,  
Philippe C. Nicot, Christophe Robin

### ► To cite this version:

Mathilde Royer, Romain Larbat, Jacques Le Bot, Stephane Adamowicz, Philippe C. Nicot, et al..  
Tomato response traits to pathogenic *Pseudomonas* species: Does nitrogen limitation matter?. *Plant Science*, 2016, 244, pp.57-67. 10.1016/j.plantsci.2015.12.008 . hal-01477457

HAL Id: hal-01477457

<https://hal.univ-lorraine.fr/hal-01477457v1>

Submitted on 10 Mar 2022

**HAL** is a multi-disciplinary open access archive for the deposit and dissemination of scientific research documents, whether they are published or not. The documents may come from teaching and research institutions in France or abroad, or from public or private research centers.

L'archive ouverte pluridisciplinaire **HAL**, est destinée au dépôt et à la diffusion de documents scientifiques de niveau recherche, publiés ou non, émanant des établissements d'enseignement et de recherche français ou étrangers, des laboratoires publics ou privés.



Distributed under a Creative Commons Attribution - NonCommercial - NoDerivatives 4.0  
International License

# Tomato response traits to pathogenic *Pseudomonas* species. Does nitrogen limitation matter?

Mathilde Royer<sup>1,2</sup>, Romain Larbat<sup>1,2</sup>, Jacques Le Bot<sup>3</sup>, Stéphane Adamowicz<sup>3</sup>, Philippe C. Nicot<sup>4</sup>, Christophe Robin<sup>1,2\*</sup>

<sup>1</sup> INRA, UMR 1121 “Agronomie & Environnement” Nancy-Colmar, BP 172, 54505 Vandœuvre-lès-Nancy, France

[mathilde.royer@nancy.inra.fr](mailto:mathilde.royer@nancy.inra.fr)

[romain.larbat@univ-lorraine.fr](mailto:romain.larbat@univ-lorraine.fr)

<sup>2</sup> Université de Lorraine, UMR 1121 “Agronomie & Environnement” Nancy-Colmar, BP 172, 54505 Vandœuvre-lès-Nancy, France

<sup>3</sup> INRA, UR 1115 “Plantes et Systèmes de Culture Horticoles”, 84000 Avignon, France

[Jacques.Lebot@avignon.inra.fr](mailto:Jacques.Lebot@avignon.inra.fr)

[Stephane.Adamowicz@avignon.inra.fr](mailto:Stephane.Adamowicz@avignon.inra.fr)

<sup>4</sup> INRA, UR 407 “Pathologie végétale”, CS 60094, 84143 Montfavet cedex, France

[philippe.nicot@avignon.inra.fr](mailto:philippe.nicot@avignon.inra.fr)

\* To whom correspondence should be addressed: [christophe.robin@univ-lorraine.fr](mailto:christophe.robin@univ-lorraine.fr)

## Abstract

Induced chemical defence is a cost-efficient protective strategy, whereby plants induce the biosynthesis of defence-related compounds only in the case of pest attack. Plant responses that are pathogen specific lower the cost of defence, compared to constitutive defence. As nitrogen availability (N) in the root zone is one of the levers mediating the concentration of

1  
2  
3  
4  
5  
6  
7  
8  
9  
10  
11  
12  
13  
14  
15  
16  
17  
18  
19  
20  
21  
22  
23  
24  
25  
26  
27  
28  
29  
30  
31  
32  
33  
defence-related compounds in plants, we investigated its influence on response traits of  
tomato to two pathogenic bacteria, growing plants hydroponically at low or high N supply.  
Using two sets of plants for each level of N supply, we inoculated one leaf of one set of plants  
with *P. syringae*, and inoculated the stem of other set of plants with *P. corrugata*. Tomato  
response traits (growth, metabolites) were investigated one and twelve days after inoculation.  
In infected areas, *P. syringae* decreased carbohydrate concentrations whereas they were  
increased by *P. corrugata*. *P. syringae* mediated a redistribution of carbon within the  
phenylpropanoid pathway, regardless of N supply: phenolamides, especially  
caffeoylputrescine, were stimulated, impairing defence-related compounds such as  
chlorogenic acid. Inoculation of *P. syringae* produced strong and sustainable systemic  
responses. By contrast, inoculation of *P. corrugata* induced local and transient responses. The  
effects of pathogens on plant growth and leaf gas exchanges appeared to be independent of N  
supply. This work shows that the same genus of plant pathogens with different infection  
strategies can mediate contrasted plant responses.

34  
35  
36  
37  
38  
39  
**Key words:** Tomato-*Pseudomonas* pathogenic interactions; N limitation; carbohydrates;  
phenolics; elicitation; systemic response

#### 40 41 42 **Highlights**

- 43 • Inoculation of *P. syringae* produced strong and sustainable systemic responses
- 44
- 45 • By contrast, inoculation of *P. corrugata* induced local and transient responses
- 46
- 47 • *P. syringae* mediated a redistribution of carbon within the phenylpropanoid pathway
- 48
- 49 • The study provides novel assessments of *P. corrugata*-tomato pathogenic interaction
- 50
- 51

#### 52 53 54 **Abbreviations**

55  
56  
57  
58  
CO<sub>2</sub>. carbon dioxide

59  
60  
61  
62  
DAI. days after inoculation

1 DAS. days after sowing

2  
3 DW. dry weight

4  
5  
6 HN. high nitrogen

7  
8  
9 LN. low nitrogen

10  
11  
12 PPFD. photosynthetic photon flux density

13  
14 [X]. concentration of X

# 1. Introduction

During the process of evolution, plants have acquired several natural defence mechanisms and specific barriers that act as protection against pests. This inherent protection, however, does not provide adequate defence in field crop production, as can be inferred from the regular practice of pesticide application required in conventional agriculture. In the current context of "green" agriculture, there is therefore an important challenge for agronomists to strengthen natural defence mechanisms of crop plants. Lowering the use of nitrogen (N) fertilisers and pesticides by crops forms a major part of the emerging concept of ecological intensification, which seeks to maximise primary production per unit area without compromising the ability of the system to sustain its productive capacity [1, 2]. It is well established that nitrogen availability influences the resistance of plants to pathogens [3-6] and that N limitation or deficiency enhances the concentration of certain defence-related compounds in plant tissues [7-11]. It is reasonable to postulate, therefore, that controlling N fertilisation may offer some practical agronomic leverage to strengthen plant defence by enhancing the composition and concentrations of defensive compounds in plant tissues. This approach accords with hypotheses that secondary metabolism is stimulated when nutrient resources in the environment are limited, thereby raising plant defence at the expense of plant growth [12]. For example, it has been reported that the susceptibility of tomato plants to *Pseudomonas syringae* decreases under low N fertilisation rates as compared to high rates [4] although the opposite effect has also been reported for other pathogens. This is the case for the susceptibility of tomato to *Botrytis cinerea*, which has been shown to decrease under increasing N fertilisation rates [3, 13, 14]. The effect of N on plant defence, therefore, appears to be pathogen-dependent, illustrating the complexity of plant-pathogen interactions. Plant defence involves a great diversity of mechanisms operating at molecular, cellular and whole-plant levels. Untangling this complexity of plant-enemy interactions is thus a major

1  
2  
3  
4  
5  
6  
7  
8  
9  
10  
11  
12  
13  
14  
15  
16  
17  
18  
19  
20  
21  
22  
23  
24  
25  
26  
27  
28  
29  
30  
31  
32  
33  
34  
35  
36  
37  
38  
39  
40  
41  
42  
43  
44  
45  
46  
47  
48  
49  
50  
51  
52  
53  
54  
55  
56  
57  
58  
59  
60  
61  
62  
63  
64  
65

26 challenge for research. Work in this area, is often focused on restricted aspects of plant  
27 defence. However, additional studies are required to identify the traits of plant response to  
28 pathogens. These include, for example, changes in plant architecture and in plant metabolism  
29 such as the balance between primary and secondary pathways. A greater knowledge of these  
30 traits would be expected to allow mediation of plant defence through crop/plant management  
31 or plant breeding.

32 In this study we investigated the response of adequately N-supplied vs N-limited tomato  
33 plants to two bacteria of the genus *Pseudomonas* (*P. syringae* pv. *tomato* and *P. corrugata*),  
34 that are capable of depressing crop yields of tomatoes produced either in open fields or  
35 greenhouses. *P. syringae* pv. *tomato* is the causal agent of bacterial speck (dark brown  
36 necrotic spots surrounded by a yellow halo) which preferentially attacks the leaves [15]. *P.*  
37 *corrugata* is the causal agent of pith necrosis (brown to black necrotic areas along the stem  
38 that may extend over several centimetres), which exclusively attacks the stems. On a  
39 longitudinal stem section, the pith appears brown, necrotic and ultimately decomposes [16,  
40 17]. Very few studies have described the responses of both primary and secondary  
41 metabolism of tomato to *Pseudomonas* infection [18, 19]. Some studies have focused on the  
42 plant growth response and concentrations of primary metabolites (amino acids,  
43 carbohydrates) [15, 20]. Others have reported on defence mechanisms, including synthesis of  
44 defence metabolites [21-23]. As far as we are aware, nothing is known concerning changes in  
45 the metabolic profile of tomato tissues in response to the pathogen *P. corrugata*.

46 The main objective of this work was to assess the importance of N nutrition on chemical  
47 plant defence in the context of healthy versus pseudomonas-attacked tomato plants. In this  
48 respect we investigated the metabolic and ecophysiological changes of young hydroponically  
49 grown plants occurring during the first few hours and days following infection by these two  
50 *Pseudomonas* species. We tested the hypothesis that N limitation restricts the development of

1  
2  
3  
4  
5  
6  
7  
8  
9  
10  
11  
12  
13  
14  
15  
16  
17  
18  
19  
20  
21  
22  
23  
24  
25  
26  
27  
28  
29  
30  
31  
32  
33  
34  
35  
36  
37  
38  
39  
40  
41  
42  
43  
44  
45  
46  
47  
48  
49  
50  
51 symptoms by strengthening the tomato defensive responses. We also tested the hypothesis  
52 that tomato responses to *P. syringae* and to *P. corrugata* differ both as a consequence of  
53 elicitation of different metabolic pathways and differences in pathogen behaviour towards  
54 available resources (carbohydrates, nitrogen). The main traits monitored included net CO<sub>2</sub>  
55 assimilation rate, non-structural carbohydrates, and organ concentrations of phenolic  
56 compounds and tomatine.

57 The specialized metabolites targeted correspond to two major metabolic pathways - the  
58 ubiquitous phenylpropanoid pathway derived from phenylalanine (rutin, chlorogenic acid,  
59 kaempferol rutinoside, caffeoylputrescine...) and the glycoalkaloid pathway, which typically  
60 produces tomatine in tomato. All these metabolites are present in tomato [11] where they are  
61 considered as putative defence-related compounds [23, 24] and their concentrations are  
62 mediated by N availability [7, 9, 11].

63 We investigated these plant traits 24 h and 12 days after infection, in order to identify short-  
64 term responses, to evaluate their sustainability and eventually to assess longer-term  
65 processes. We considered that after 12 days there was a settlement in the reaction cascade  
66 following infection, including impacts on the carbon economy (C assimilation, regulation of  
67 source-sink interaction, partitioning of C to reserve compounds, [25]), on the concentration of  
68 specific metabolites elicited and probably on the dry matter partitioning.

## 69 **2. Materials and methods**

### 70 ***2.1 Plant material, growth conditions and experimental design***

71 Tomato plants *Solanum lycopersicum* L. cv Better Bush (Park Seed Co., Hodges, SC, USA -  
72 resistant to *Verticillium* wilt and *Fusarium* wilt) were raised on a hydroponic system set up in

73 a growth chamber maintained at 25°C and 85% humidity. Germinating seeds were retained in  
74 the dark for the first three days then illuminated with a 16h photoperiod at 60% humidity.  
75 Ten days after sowing (DAS), seedlings were transferred to two independent Nutrient Film  
76 Technique (NFT) systems set up in twin growth chambers (16h photoperiod, 25°C in air and  
77 nutrient solutions, 60% air humidity). Nineteen DAS (i.e. seven days before *Pseudomonas*  
78 inoculation), the ambient conditions were changed to 21°C and 90% humidity. All  
79 temperature sensors were calibrated in a water bath with 0.01°C precision (Haake model  
80 C35/F6, Karlsruhe, Germany).  
81 Two contrasting N nutrition regimes were imposed. Half of the plants were fed with a N  
82 supply previously shown to be non-limiting for tomato growth [10, 24, 26] and presently  
83 referred to as "High N" (HN). This consisted of a complete nutrient solution described below,  
84 with N provided as NO<sub>3</sub><sup>-</sup> at a concentration continuously regulated at 1.5 mM N. The second  
85 regime, previously shown to limit plant growth [9, 27] and referred to as "Low N" (LN),  
86 contained 0.15 mM N at the start of the experiment. It was adjusted every day using an  
87 automatic system that limited the daily N uptake of the LN plants to only 30% of that of HN  
88 plants [10, 24, 28]. The nitrate uptake rate calculations followed the unbiased procedure  
89 described by Adamowicz and Le Bot [29].  
90 The complete HN nutrient solution was prepared with demineralised water and analytically  
91 pure salts at the following concentrations: KNO<sub>3</sub> (0.6 mM), KH<sub>2</sub>PO<sub>4</sub> (1 mM), K<sub>2</sub>SO<sub>4</sub> (0.7  
92 mM), Ca(NO<sub>3</sub>)<sub>2</sub> (0.3 mM), CaSO<sub>4</sub> (3.2 mM), Mg(NO<sub>3</sub>)<sub>2</sub> (0.15 mM) and MgSO<sub>4</sub> (1.4 mM).  
93 The LN solution at 0.15 mM NO<sub>3</sub> was composed of KNO<sub>3</sub> (0.06 mM), KH<sub>2</sub>PO<sub>4</sub> (1 mM),  
94 K<sub>2</sub>SO<sub>4</sub> (0.97 mM), Ca(NO<sub>3</sub>)<sub>2</sub> (0.03 mM), CaSO<sub>4</sub> (3.47 mM), Mg(NO<sub>3</sub>)<sub>2</sub> (0.13 mM) and  
95 MgSO<sub>4</sub> (1.49 mM). Sulphate was chosen as the compensating anion for nitrate variation so  
96 that in both solutions the concentrations of cations and H<sub>2</sub>PO<sub>4</sub><sup>-</sup> were the same and the anionic  
97 charge [NO<sub>3</sub><sup>-</sup>] + 2 × [SO<sub>4</sub><sup>2-</sup>] remained constant and equal to 12 mM.



1  
2  
3  
4  
5  
6  
7  
8  
9  
10  
11  
12  
13  
14  
15  
16  
17  
18  
19  
20  
21  
22  
23  
24  
25  
26  
27  
28  
29  
30  
31  
32  
33  
34  
35  
36  
37  
38  
39  
40  
41  
42  
43  
44  
45  
46  
47  
48  
49  
50  
51  
52  
53  
54  
55  
56  
57  
58  
59  
60  
61  
62  
63  
64  
65

98 Micronutrients were provided as a "ready to use" commercial mixture of Kanieltra (Hydro  
99 Azote, France) formula 6 Fe ( $0.1 \text{ l m}^{-3}$ ) and EDTA-Fe ( $43 \text{ }\mu\text{M}$ ). Solution volumes, pH and  
100  $\text{NO}_3^-$  concentration were measured, monitored and regulated automatically by the Totomatix  
101 system [28]. Nitrate adjustments were made by automatic additions of 1mM stock solution of  
102  $\text{NO}_3$  containing (in  $\text{mol l}^{-1}$ ) 0.408  $\text{KNO}_3$ , 0.204  $\text{Ca}(\text{NO}_3)_2$  and 0.092  $\text{Mg}(\text{NO}_3)_2$  [28].

103 The experimental design comprised six randomised blocks equally distributed between the  
104 twin growth rooms. In each block the plants were fed with the complete nutrient solutions  
105 containing the HN and the LN regimes. For each N regime, the plants were inoculated with  
106 either water (as a mock inoculation) or a suspension of the bacterium (*P. syringae* or *P.*  
107 *corrugata*).

## 108 ***2.2 Plant inoculation procedure using pathogenic Pseudomonas***

109 We used strain DC3000 of *P. syringae*, initially isolated in 1960 in Guernsey [30] and strain  
110 CFBP 5307 of *P. corrugata*, initially isolated in 1980 in France and kindly provided by Dr.  
111 Cindy Morris (INRA, Avignon).

112 The *P. syringae* complex is composed of numerous genetic lineages of strains from both  
113 agricultural and environmental habitats (including habitats closely linked to the water cycle).  
114 DC3000 strain is part of Phylogroup 1 which contains many isolates from diseased plants  
115 [31].

116 *P. corrugata* has the capacity to adapt to a large diversity of habitats (soil, plants). This  
117 bacterium is pathogenic on tomato (pith necrosis) but not of other plants such alfalfa [32]. It  
118 is more closely related to *Pseudomonas fluorescens* and it is outside the *P. syringae* species  
119 complex [33].

120 Inoculations were performed 26 DAS, either on the leaves or on the stems, depending on the  
121 pathogen. Inoculations of *P. syringae* consisted in infiltrating 100  $\mu\text{l}$  aliquots of bacterial

122 suspension within the terminal leaflet of the fourth leaf (L4 - numbered from the cotyledon  
123 leaves) with a needleless syringe. Mock inoculations were carried out similarly with sterilised  
124 ultrapure water on control plants. The contours of infiltrated areas were traced with a felt pen.  
125 Inoculations with *P. corrugata* consisted in injecting with 10 µl aliquots of a bacterial  
126 suspension into the internode between leaves L4 and L5. The inoculum was set at the centre  
127 of the stem, using a 20 µl pipette tip. The same procedure was applied to control plants with  
128 the same volume of sterilised ultrapure water.

129 Both bacterial inocula (at a final concentration of approximately  $10^8$  cells ml<sup>-1</sup>) were prepared  
130 from 48h cultures on KBC medium at 22-25°C [34]. We deliberately applied a high-titer  
131 inoculation (as made in other studies, for instance [35]), in order to maximize the chances of  
132 induction of a defence reaction from the plant, although such a high dose does not always  
133 induce a response ([30, 36]). Our objective was not to assess the evolution of the symptoms  
134 but to induce the hypersensitive-like reaction allowing ecophysiological and phytochemical  
135 investigations of plant responses.

### 136 **2.3 Net CO<sub>2</sub> exchange rates**

137 The CO<sub>2</sub> exchange rates (CER) were measured 27 DAS (*i.e.* one day after inoculation, DAI)  
138 on leaves of plants, which were later to be sampled at 38 DAS, using a portable  
139 photosynthesis system (Li-Cor 6400, Li-Cor, Lincoln Nebraska, USA) equipped with a LED  
140 light source (6400-02B red/blue diodes, Li-Cor, Lincoln Nebraska, USA). Temperature,  
141 [CO<sub>2</sub>] and humidity were set at growth chamber ambience. Each measurement comprised two  
142 steps. Firstly, the LED illuminator was switched on and adjusted at the growth chamber  
143 PPF (190 µmol photons m<sup>-2</sup> s<sup>-1</sup>) in order to measure net photosynthesis. Secondly, the  
144 illuminator was switched off in order to measure respiration in the dark. The measurements  
145 were made on the terminal leaflet of the fourth true leaf (L4) using 6 plants per treatment. For

146 plants inoculated at leaf L4 with *P. syringae*, measurements were made on tissue close to (but  
147 not including) the inoculated area.

#### 148 ***2.4 Plant sampling and sample preparation***

149 To minimise the risks of mechanical stress and putative elicitation of metabolic pathways,  
150 plants were handled with caution throughout the experiment. Plant samples were collected 27  
151 and 38 DAS (i.e. 24 hours and 12 days after inoculation, DAI). The inoculated organs and  
152 those adjacent (not in contact with *Pseudomonas*) were sampled separately to assess whether  
153 the chemical responses to the pathogen were localised or systemic. For plants inoculated with  
154 *P. syringae* and for the water-inoculated control plants, the inoculated leaf (L4) was sampled  
155 separately. The two adjacent leaves (L3 and L5) were combined and stems were also  
156 sampled. For plants inoculated with *P. corrugata* and the corresponding control plants, the  
157 inoculated internode was sampled separately and the two adjacent leaves (L4 and L5) were  
158 combined. In all cases, the remaining leaves and stems were pooled for shoot biomass  
159 determination. The whole inoculated organ (L4, internode) was sampled for analyses, the  
160 inoculated area representing only a small fraction of the whole organ (see Fig. 2).

161 At sampling dates, the leaf area of each plant was measured (Li-3100 C area meter, Li-Cor,  
162 Lincoln Nebraska, USA). The sampled organs were immediately frozen in liquid nitrogen,  
163 then stored at -20°C until freeze-drying. The dry samples were weighed, ground to a fine  
164 powder and further stored at -20°C.

#### 165 ***2.5 Assessment of plant reaction***

166 At the second sampling (12 DAI and 38 DAS), photographs were taken of the inoculated and  
167 mock-inoculated leaves and stems (cut in half lengthwise) in order to assess whether a  
168 hypersensitive-like response or an invasive infection had been established (Fig. 2 a & b).

## 169 **2.6 Chemical analyses**

### 170 **2.6.1 Non-structural carbohydrates**

171 Soluble carbohydrates were extracted (10 mg dry weight (DW) / 1 ml 80% ethanol) for 30  
172 min at 80°C and centrifuged (10 min, 12100 g). This operation was repeated twice and the  
173 supernatant was collected and evaporated to dryness (Speedvac, Savant, USA). The residue  
174 was dissolved in 1.5 ml of ultrapure water. About 10 mg of polyvinylpyrrolidone were  
175 added to the extract and blended every 5 min for 15 min at 4°C in order to eliminate phenols  
176 and proteins. After centrifugation at 16100 g for 10 min at 4°C, the soluble proteins were  
177 eliminated by adding 450 µl of Courtonne reagent. After mixing, the extract was allowed to  
178 stand for 5 min at 4°C. A spatula tip of Na<sub>2</sub>HPO<sub>4</sub> (*c.a.* 4 to 5 mg) was added to precipitate  
179 lead in excess. After centrifugation (10 min, 7500 g), the extract was filtered with a 0.22 µm  
180 mesh and frozen until analysis [37].

181 An internal standard of rhamnose solution (20 µl at 10 mg l<sup>-1</sup>, Sigma, Saint Quentin Fallavier,  
182 France) was added to 10-fold diluted samples. Glucose, fructose and sucrose were separated  
183 and detected on a HPLC-MS (LTQ-MS, Thermo Scientific, San Jose, CA, USA). Separation  
184 was performed on a Polyamine II column (250 × 4.6 mm, YMC, Dinslaken, Germany) fitted  
185 with a guard column (7.5 × 4.6 mm, YMC, Dinslaken, Germany) following the protocol of  
186 Ricochon *et al.* [38].

187 The pellet from the extraction of soluble carbohydrates was vacuum dried for 10 min,  
188 dissolved in 0.5 or 1 ml of 0.02N NaOH (depending on the considered organ), autoclaved and  
189 centrifuged for 2 min at 12600 g. Starch was determined enzymatically on 100 to 400 µl of  
190 samples depending on expected concentration [39] (Enzytec Starch Ref. 1002942, R-  
191 Biopharm, Darmstadt, Germany)

## 192 2.6.2 Phenolics and tomatine

193 The extraction procedure was performed on 20 mg of dry powder and followed by separation  
194 and quantification of soluble phenolics as described in Royer *et al.* [11].

195 Phenolics contained in the infected tissues were separated on an U-HPLC system (Shimadzu,  
196 Japan) equipped with a binary solvent delivery pump and a diode array detector. Three  
197 microliters of extract were separated on a C18 Zorbax Eclipse Plus (150 × 2.1 mm, 1.8µm)  
198 column (Agilent, USA) by using a gradient elution from 1 to 50% MeOH 0.1% formic acid  
199 (FA) in 7.1 min, then 99% MeOH 0.1% FA in 0.8 min with a flow rate of 430 µl min<sup>-1</sup>. The  
200 column was rinsed for 2 min with 99% MeOH 0.1% FA and re-equilibrated to the initial  
201 conditions for 2 min prior to the next run. Phenolic quantification was based on the area  
202 under peak determined at 320 nm and expressed relative to calibration curves with  
203 chlorogenic acid, caffeic acid, ferulic acid, caffeoylputrescine, rutin and kaempferol  
204 rutinoside (Sigma, Saint Quentin Fallavier, France).

205 Concentrations of chlorogenic acid, rutin and kaempferol rutinoside in the tissue adjacent to  
206 the infection site were measured using HPLC (model LC-20AD, Shimadzu Corp., Kyoto,  
207 Japan) on a RP-18 column (4 × 250 mm, 5 µm, Merck, Darmstadt, Germany) fitted with a  
208 guard column (Lichrospher RP - 18.5 µm, Merck). The mobile phase consisted of 0.1%  
209 formic acid in ultrapure water (A solvent) and 0.1% formic acid in methanol (B solvent).  
210 Detection was performed with a diode array detector (200-400 nm) and quantification from  
211 peak area was made on the basis of standard curves of rutin, chlorogenic acid and  
212 kaempferol-rutinoside (Sigma, Saint Quentin Fallavier, France). The presence of co-eluting  
213 peaks made it difficult to quantify caffeoylputrescine. This problem was resolved using an  
214 MS detector (LTQ Orbitrap, Thermofisher Scientific, San José, CA, USA) operating in  
215 electrospray mode (ESI). Caffeoylputrescine was quantified by following the amount of the

216 [M+H]<sup>+</sup> peak at  $m/z$  251 and using a range of known concentrations of caffeoylputrescine  
217 standard (provided by Dr. Werck-Reichhart from IBMP, Strasbourg).

218 Tomatine from 2  $\mu$ l samples previously diluted 50-fold in 70% MeOH with solanine as  
219 internal standard (50  $\mu$ M, Extrasynthese) was separated and detected on an HPLC-MS (LTQ-  
220 MS, Thermo Scientific, San Jose, CA, USA) with the same settings as those in Royer *et al.*  
221 [11].

## 222 **2.7 Data analysis**

223 All data were subjected to mixed two-way analyses of variance ([N] and *Pseudomonas*  
224 inoculation as fixed factors and blocks as random) using the lm procedure in R software (R  
225 project for Statistical computing, <http://www.r-project.org>). The statistical significance was  
226 set at  $p < 0.05$  and denoted \* ( $p < 0.05$ ), \*\* ( $p < 0.01$ ) and \*\*\* ( $p < 0.001$ ). Normal Q-Q plots  
227 and correlation between variance and means were examined to assess the data distribution  
228 and homoscedasticity. When necessary, the data were Log or power transformed.

## 229 **3. Results**

230 The results described in detail below consider the effects of *Pseudomonas* infection (either *P.*  
231 *syringae* or *P. corrugata*) of tomato plants supplied with adequate (1.5 mM, HN) versus low  
232 N (0.15 mM, LN) nitrate-N supply. The experiment compares mock inoculated (i.e. control)  
233 with bacteria-inoculated plants. The data characterise these effects on stems and leaves  
234 sampled outside (adjacent organs) or within the inoculated zone of tomato plants harvested 1  
235 or 12 days after inoculation (DAI).

236 The development of necrotic areas induced by both *Pseudomonas* species indicated the  
237 development of a reaction by the plant. Twelve DAI, necrotic areas typical of a  
238 hypersensitive-like reaction on the leaves inoculated with *P. syringae* (Fig. 1a). On plants

239 inoculated with *P. corrugata* in their stem, necrotic areas expanded internally in the pith  
240 around the inoculation point. Mock-inoculated control stems developed small necrotic areas  
241 around the point of water inoculation limited to the zone penetrated by the micropipette tip  
242 (Fig. 1b).

### 3.1 Plant growth and CO<sub>2</sub> exchange rates

244 Over the experimental period (1-12 DAI), shoot dry weights increased 4-6 fold (Fig. 2a,b).  
245 LN treatment reduced growth rapidly and consistently with time. Shoot dry weight was  
246 roughly halved in the LN plants compared to the HN plants (1 DAI: 1.5g for LN vs. 2.5g for  
247 HN; 12 DAI: 5g for LN vs. 15g for HN \*\*\*). No difference was observed between the two  
248 regimes of N nutrition on net photosynthesis (Fig. 2c) or raw photosynthesis (data not  
249 shown). Low N fertilisation, however, significantly reduced leaf respiration rate in the dark  
250 (Fig. 2d). There was no visual evidence of N deficiency in plants low in N supply during the  
251 experiment.

252 Infection with *P. syringae* significantly restricted shoot dry weight (12 DAI \*, Fig. 2a), net  
253 photosynthesis (\*\*\*, Fig. 2c) but it stimulated leaf respiration rate in the dark (\*\*, Fig. 2d),  
254 and reduced area of infected leaves (Fig. 1e, 1 DAI \*\* and 12 DAI \*\*). By contrast, *P.*  
255 *corrugata* infection produced no significant effect on shoot dry weight (Fig. 2b), net  
256 photosynthesis (Fig. 2c) or leaf respiration rate in the dark (Fig. 2d), or adjacent leaf area  
257 (Fig. 2f).

258 Infection with *P. syringae* did not affect the leaf area adjacent to the inoculation point (Fig.  
259 2g).

260

## 261 **3.2 Metabolite concentrations in infected organs**

### 262 **3.2.1 Carbohydrates**

263 Compared to mock inoculation, the presence of *P. syringae* decreased sharply both the  
264 glucose and fructose concentrations of inoculated leaves 1 DAI (\*\*\*, Fig. 3a) and 12 DAI  
265 (\*\*, Fig. 3b), the effect being more pronounced 1 DAI (5-13 fold) than 12 DAI (2-5 fold).  
266 One DAI, low N nutrition increased fructose concentration in mock inoculated but not  
267 infected leaves (\*, Fig. 3a). One DAI, *P. syringae* had no significant effect on starch  
268 concentration (Fig. 3a) but 12 DAI its value decreased fourfold in response to inoculation,  
269 regardless of N treatment (\*\*\*, Fig. 3b). Sucrose concentration was never affected by *P.*  
270 *syringae* (Fig. 3a,b).

271 One DAI, *P. corrugata* increased the stem concentrations of glucose (1.8-2.2 fold, \*\*\*),  
272 fructose (1.5-2 fold, \*\*) and sucrose (1.1-1.3 fold, \*), as compared to mock inoculated stems  
273 (Fig. 3c). Twelve DAI these concentration differences were no longer present between  
274 control and infected plants (Fig. 3d). Starch concentration in stems was low and not  
275 responsive to *P. corrugata* inoculation (Fig. 3c,d).

### 276 **3.2.2 Defence-related compounds**

277 According to Larbat *et al.*[24], the main phenolics found in healthy tomato leaf and stem  
278 extracts are isomers of caffeoyl hexaric acid (CHA1-5), chlorogenic acid (the main form CA  
279 and the minor isomers CA<sub>a</sub> and b), quercetin derivatives (Rutin, R; Apio-rutin, AR),  
280 kaempferol derivatives (Kaempferol-rutinoside, KR; Unknown kaempferol derivative, K  
281 Der), caffeoylputrescine (CP; with 2 isoforms, one predominating), feruloylputrescine,  
282 coumaroyltyramine and two partially described phenolics assigned as putative phenolamides  
283 (Caf Der and Fer Der). Our study confirmed these findings, with 20 phenolic compounds  
284 detected (Supplementary Figs. 1, 2). We also observed that LN nutrition increased the



285 concentration of all phenolic compounds in healthy plant leaves and stems, with the  
286 exception of CP, Caf Der, Fer Der, and FP in stem, whose concentrations decreased under  
287 LN (Fig. 4, Supplementary Tables 1, 2). LN nutrition enhanced also the concentration of the  
288 glycoalkaloid tomatine (Fig. 4).

289 The presence of *P. syringae* caused large, rapid and long-lasting accumulation of  
290 caffeoylputrescine in inoculated leaves (1 DAI, 20-98 fold increase, \*\*\*, Fig. 4a and 12 DAI  
291 33-100 fold increase, \*\*\*, Fig. 4b) that was amplified by the HN treatment (\*). *P. syringae*  
292 also increased leaf Caf Der concentration (1 DAI, 2-2.8 fold increase, \*\*; 12 DAI 1.4-2.3  
293 fold increase, \*\*; Supplementary Table 1). Inoculation with *P. syringae* immediately  
294 decreased (1 DAI) the leaf concentration of chlorogenic acid (1.8-3.1 fold, \*\*\*, Fig. 4a).  
295 However, this effect disappeared 12 DAI as the concentrations of all phenolic compounds  
296 (except caffeoylputrescine, Caf Der and tomatine) in inoculated and mock inoculated leaves  
297 were of similar values (Fig. 4a,b; Supplementary Table 1).

298 Inoculation with *P. corrugata* induced a rapid (1 DAI) and slight increase of stem  
299 chlorogenic acid concentration (1.2 fold, \*; Fig. 4c,d, Supplementary Table 2) but  
300 caffeoylputrescine concentration was unchanged. This constituent increased rapidly (1 DAI)  
301 but to a small extent. Other constituents increasing in concentrations were: Caf Der (1.4 fold,  
302 \*), Fer Der (1.4 fold, \*), rutin (1.3 fold, \*; Fig. 4c,d) and tomatine (1.2 fold, \*\*\*, insets of  
303 Fig. 4b,d). All these effects disappeared 12 DAI (Fig. 4c,d; Supplementary Fig. 2;  
304 Supplementary Table 2).

305 The overall comparison of U-HPLC chromatograms from organs obtained from healthy or  
306 inoculated plants with *P. syringae* or *P. corrugata*, revealed that of the two pathogens tested,  
307 *P. syringae* induced the most marked changes (Supplementary Figs. 1,2).

### 308 **3.3 Metabolite concentrations in adjacent organs**

#### 309 **3.3.1 Carbohydrates**

310 Inoculation with *P. syringae* modified the concentrations of several metabolites in stems and  
311 leaves distant from the inoculation site. One DAI, a marked decrease in the concentrations of  
312 glucose (2.9 fold, \*) and fructose (3.7 fold, \*\*) occurred in the adjacent stem of the HN  
313 plants only (Fig. 5a). This significant effect eventually extended to both HN and LN regimes  
314 12 DAI (glucose: 2-2.2 fold, \*\*\*; fructose: 1.8-2 fold, \*\*\*; Fig. 5b). Starch concentration in  
315 the adjacent stem decreased significantly 12 DAI only in LN inoculated plants (2.1 fold, \*\*;  
316 Fig. 5b). In the leaves adjacent to those inoculated with *P. syringae*, sucrose concentration  
317 was slightly reduced 1 DAI (1.2 fold, \*, Fig. 5c). Twelve DAI, both glucose and fructose  
318 concentrations tended to decrease in the adjacent leaves of *P. syringae* inoculated plants but  
319 the effect was not statistically significant (Fig. 5d).

320 By contrast, *P. corrugata* infection produced little effect on carbohydrate concentrations in  
321 leaves and stems adjacent to the infection site. Only glucose and fructose concentrations  
322 increased in adjacent leaves, but solely 1 DAI under HN (1.7 fold \*\* and 1.6 fold \*,  
323 respectively; data not shown).

#### 324 **3.3.2 Defensive compounds**

325 Chlorogenic acid, rutin, kaempferol rutinoside and caffeoylputrescine concentrations in  
326 adjacent tissues were used as marker molecules to assess the impacts of *P. syringae* and *P.*  
327 *corrugata* inoculation on the defensive tomato compounds. One DAI, caffeoylputrescine  
328 concentration increased markedly in the adjacent stem (2.2-3.4 fold, \*\*\*; Fig. 5a) and leaves  
329 (1.6-2.7 fold, \*\*; Fig. 5b). These increases were amplified 12 DAI both in stems (2-9.5 fold,  
330 \*\*\*; Fig. 5b) and leaves (5.6-48.3 fold, \*\*\*; Fig. 5d). *P. syringae* decreased the concentration  
331 of chlorogenic acid in the leaves adjacent to the inoculation site 1 DAI (1.1-1.3 fold, \*; Fig.

332 5c) and 12 DAI (1.6-1.9 fold, \*\*\*; Fig. 5d) but this was not the case in the adjacent stems  
333 (data not shown). Twelve DAI but only under LN supply, *P. syringae* inoculation reduced  
334 rutin concentration in adjacent leaves (1.5 fold, \*; Fig. 5d) and adjacent stems (1.7 fold, \*\*\*;  
335 Fig. 5b).  
336 By contrast, *P. corrugata* infection produced no significant effect on the concentrations of  
337 defensive compounds in the adjacent leaves and stems (data not shown).  
338 Low N nutrition increased the concentration of all phenolics and tomatine in the adjacent  
339 leaves and stems while that of CP was decreased (Fig. 5).

## 340 4. Discussion

341 The present work reports on the effects of two pathogenic species of *Pseudomonas* on tomato  
342 growth and concentrations of primary and secondary metabolites in leaves and stems. It also  
343 attempts to assess whether or not N nutrition is able to modulate these responses. We  
344 inoculated plants with *P. syringae* or *P. corrugata* and used appropriate mock inoculations  
345 with sterile water as controls, then compared plant growth and composition responses one  
346 and twelve days after the inoculation. Those two sampling dates integrate the period during  
347 which the plant develops short-term metabolic responses and longer-term ones after  
348 infection, a common pattern observed with other pathosystems [40-42]. In order to  
349 investigate the influence of N in relation to the pathogens, the plants were either supplied  
350 adequately with N or with a closely regulated low rate of N supply. By this means, we  
351 obtained two groups of plants, one growing at the maximum rate allowed by the climatic  
352 conditions of the growth room while growth of the other was limited by plant N uptake.  
353 Growth of the low N plants lagged behind that of the high N plants by roughly 50% because  
354 of lack of N. Both groups of plants, however, maintained the same photosynthetic rate per  
355 unit area. These conditions therefore, fit those described in the framework of the growth-

1  
2  
3  
4  
5  
6  
7  
8  
9  
10  
11  
12  
13  
14  
15  
16  
17  
356 differentiation balance (GDB) hypothesis [12, 43] since growth was restricted by a lack of N  
357 (Fig. 2a,b) without affecting net assimilation rate per unit leaf area (Fig. 2c). N limitation  
358 lowered carbon acquisition at plant level as a consequence of restricted leaf area but not of  
359 photosynthetic efficiency [26]. Such conditions are favourable to increases in secondary  
360 metabolite concentrations in plant tissues [9, 44]. These clear-cut experimental conditions  
361 were essential to study the tomato response traits to pathogenic pseudomonas species under  
362 conditions of N nutrition limitation.

#### 18 363 ***4.1 Pseudomonas species differed in effect on carbohydrate metabolism*** 19 20 21 364 ***during the early stage of infection***

22  
23  
24 365 Sugars are a source of energy in plants but are also precursors in the biosynthesis of defence-  
25  
26 366 related compounds [18]. While photosynthesis is clearly the major source of carbon, several  
27  
28 367 sinks compete simultaneously for carbohydrates, such as synthesis of secondary metabolites,  
29  
30  
31 368 plant growth as well as pathogen development [20]. From these viewpoints *P. syringae* and  
32  
33  
34 369 *P. corrugata* behaved very differently.

35  
36  
37 370 *P. syringae* mediated changes in carbohydrate metabolism. A rapid and sustainable decrease  
38  
39 371 in concentrations of glucose and fructose was observed in the infected leaves, as already  
40  
41 372 described for another strain of *P. syringae* [15] and for the pathogenic fungus *B. cinerea* [20].  
42  
43  
44 373 Starch, which is the main storage form of carbohydrate in tomato [27, 45, 46], was  
45  
46 374 consequently depressed in the long term response to *P. syringae* (Fig. 3b). Contrary to a  
47  
48  
49 375 previous study with *B. cinerea* and tomato [20], the concentration of sucrose, a transport  
50  
51 376 carbohydrate, did not drop after inoculation in our study. The decrease in carbohydrate  
52  
53  
54 377 concentration following *P. syringae* inoculation was likely the consequence of reduction in  
55  
56 378 photosynthesis concomitant with changes in C allocation towards secondary metabolism.  
57  
58  
59 379 Indeed, the gas exchange rates measured in non-necrotic areas of the inoculated leaf revealed

1  
2  
3  
4  
5  
6  
7  
8  
9  
10  
11  
12  
13  
14  
15  
16  
17  
18  
19  
20  
21  
22  
23  
24  
25  
26  
27  
28  
29  
30  
31  
32  
33  
34  
35  
36  
37  
38  
39  
40  
41  
42  
43  
44  
380 reduced photosynthesis in daylight (Fig. 2c) and enhanced respiration in the dark (Fig. 2d),  
381 the latter revealing higher metabolic rates in non-infected zones. This pattern is consistent  
382 with the findings of Bonfig *et al.* [47] on *Arabidopsis thaliana* infected with the same strain  
383 of *P. syringae*. In tomato, *P. syringae* inoculation causes down-regulation of photosynthetic  
384 gene expression [20]. As plant growth was greatly reduced following *P. syringae* inoculation  
385 in the present study (Fig. 2a), the higher metabolic activity in non-inoculated zones revealed  
386 enhanced plant secondary metabolism. Infection by the tobacco mosaic virus in *Nicotiana*  
387 *tabaccum* leaves also mediates an alteration of the metabolic profile in infected leaves, with  
388 an increase of compounds belonging to terpenoids and phenylpropanoids such as 5-  
389 caffeoylquinic acid and flavonoids [42, 48].

390 Contrary to *P. syringae*, inoculation with *P. corrugata* mediated a rapid transient increase of  
391 all soluble carbohydrate concentrations in stems (Fig. 3c,d), which cannot be explained by  
392 changes in systemic leaf activities. Leaf necrosis was not observed; neither were net  
393 photosynthetic nor dark respiration rates affected by stem inoculation (Fig. 2c,d). *P.*  
394 *corrugata* infiltrates host tomatoes at stem or collar levels [49] and in our experiment,  
395 necrosis developed markedly in infected stems (Fig. 1). It can thus be postulated that *P.*  
396 *corrugata* impaired the performance of the vascular system, causing local sugar  
397 accumulation, particularly that of sucrose, the usual form of sugar transport.

#### 398 ***4.2 Pseudomonas species induced different effects on phenolic profiles***

47  
48  
49  
50  
51  
52  
53  
54  
55  
56  
57  
58  
59  
60  
61  
62  
63  
64  
65  
399 *P. syringae* induced a large disturbance in the phenolic profile of infected leaves, the salient  
400 effect being a strong and durable induction of caffeoylputrescine and of two other putative  
401 phenolamides. Caffeoylputrescine has previously been reported in healthy leaves and stems  
402 of eight tomato cultivars, including Better Bush [24]. Its elicitation by a plant pathogen has  
403 only been demonstrated following *P. syringae* and *Phytophthora infestans* infections in

1  
2  
3  
4  
5  
6  
7  
8  
9  
10  
11  
12  
13  
14  
15  
16  
17  
18  
19  
20  
21  
22  
23  
24  
25  
26  
27  
28  
29  
30  
31  
32  
33  
34  
35  
36  
37  
38  
39  
40  
41  
42  
43  
44  
45  
46  
47  
48  
49  
50  
51  
52  
53  
54  
55  
56  
57  
58  
59  
60  
61  
62  
63  
64  
65

404 tobacco and potato cell cultures, respectively [50, 51]. Other tomato phenolamides, such as *p*-  
405 coumaroyldopamine, feruloyldopamine, *p*-coumaroyloctopamine, *p*-coumaroylnoradrenaline,  
406 *p*-coumaroyltyramine, feruloyloctopamine, feruloylnoradrenaline and feruloyltyramine, were  
407 previously shown to be induced by inoculation with *P. syringae* [22, 23, 52]. To our  
408 knowledge, this is the first evidence of caffeoylputrescine response to *P. syringae* inoculation  
409 in tomato and it is reasonable to postulate that discrepancies in phenolamide profiles may  
410 reflect cultivar specificity. Phenolamides are considered as antiviral, antibacterial, antifungal  
411 and repellent compounds taking part in chemical defence against pest attacks [53]. As for  
412 other molecules they can bind with and reinforce cell walls [54]. From a quantitative  
413 viewpoint, caffeoylputrescine accumulation in leaves was the major change induced by *P.*  
414 *syringae* in the phenolic pathway. Indeed, its 45-fold concentration rise rendered  
415 caffeoylputrescine the most concentrated leaf phenolic. The concurrent decline in chlorogenic  
416 acid concentration in infected leaves is consistent with a similar finding in Solanaceae and  
417 indicative that chlorogenic acid and caffeoylputrescine compete for the same substrate pool  
418 of hydroxycinnamoyl coA esters [55, 56]. Thus, it is likely that during our experiment,  
419 tomato responded to *Pseudomonas* inoculation by diverting the carbon flux towards  
420 caffeoylputrescine synthesis at the expense of chlorogenic acid synthesis. Comparatively, the  
421 flavonoid pathway was little affected by *P. syringae*, since 12 DAI only the kaempferol  
422 derivative was weakly enhanced.

423 *P. corrugata* induced only slight and transient rises in rutin, tomatine (Fig. 4c,d) and the two  
424 nitrogenous phenolic Caf Der and Fer Der stem concentrations. *P. syringae* and *P. corrugata*  
425 differed slightly regarding their impact on tomatine concentration, the former brought about  
426 no change while the latter produced a small but significant decrease 1 DAI. Interestingly, it  
427 has been reported that tomatine is induced by *Ralstonia solanacearum* (formerly  
428 *Pseudomonas solanacearum*) in tomato [57].

1  
2  
3  
4  
5  
6  
7  
8  
9  
10  
11  
12  
13  
14  
15  
16  
17  
18  
19  
20  
21  
22  
23  
24  
25  
26  
27  
28  
29  
30  
31  
32  
33  
34  
35  
36  
37  
38  
39  
40  
41  
42  
43  
44  
45  
46  
47  
48  
49  
50  
51  
52  
53  
54  
55  
56  
57  
58  
59  
60  
61  
62  
63  
64  
65

429 Thus, the metabolic profile of the infected organs is pathogen-specific. The specificity of the  
430 responses is also plant-species dependent, as demonstrated in a recent study in Brassicales;  
431 the metabolic profile induced by the attack of *Pieris rapae*, a leaf miner, differed in each of  
432 the 3 brassicale host-plant species studied [58].

### 433 ***4.3 Nitrogen supply influenced concentrations of secondary metabolites***

434 N regime had a major impact on the concentrations of defence-related compounds, both in  
435 infected and healthy plants. Higher concentrations were nearly always observed under LN  
436 supply, even for the alkaloid tomatine (a N-containing molecule). The only exception to these  
437 findings concerned caffeoylputrescine (also a N-containing molecule) whose concentration  
438 was lower under LN than HN. These N effects are consistent with earlier observations made  
439 on tomato [3, 4, 10, 11].

### 440 ***4.4 Pseudomonas syringae had a systemic effect on metabolites***

441 For *P. corrugata* chemical response was restricted locally near the point of inoculation for  
442 both carbohydrates and secondary metabolites whereas that induced by *P. syringae*  
443 inoculation extended to other plant organs. In particular, the elicitation of secondary  
444 compounds was clearly systemic for chlorogenic acid (in adjacent leaves) and  
445 caffeoylputrescine (in adjacent stems and leaves). There is one report in the literature, that  
446 chemical response to *P. syringae* inoculation remains local for *p*-coumaroyldopamine and  
447 feruloyldopamine production [22]. Our results (spread of symptoms and no systemic  
448 response of tomato plant) show that the interaction between tomato cv. Better Bush and *P.*  
449 *corrugata* was compatible. These results are consistent with findings on other tomato  
450 cultivars by Gustine *et al.* [59], Bellés *et al.* [60] and Desender *et al.* [61].

## 451 **5. Conclusions**

452 This study provides a clear illustration that tomato plant response is species-dependent within  
453 a same genus of plant pathogens.

454 The inoculation site at which each species develops its pathogenicity may also explain the  
455 difference observed. We report that the attack of *P. syringae* induced a large decrease in the  
456 hexose concentration of plant tissues while *P. corrugata* produced the opposite effect. *P.*  
457 *syringae* elicited the accumulation of caffeoylputrescine, a phenolamide. This result is  
458 consistent with previous studies showing that some phenolamides are elicited during *P.*  
459 *syringae* inoculation [22]. To our knowledge, our study shows for the first time in tomato, an  
460 elicitation of caffeoylputrescine *in planta*. We verify in this study that N limitation increased  
461 the concentration of most of the plant-defence related compounds investigated (except the N-  
462 containing phenolamides). Our study reveals no clear response pattern in secondary  
463 metabolite composition and concentration during the pseudomonas inoculation in response to  
464 N supply. During *P. syringae* attack, we demonstrated that organs outside the inoculation  
465 zone elicited secondary compounds, suggesting a systemic acquired resistance. Such a  
466 hypothesis remains to be tested, for example by following the concentration of salicylic acid  
467 in the plant. Our work also provides the first assessment on the impact of *P. corrugata* on  
468 carbohydrates and defence-related secondary compounds in tomato.

## 469 **6. Acknowledgements**

470 All our thanks to the Regional Council of Lorraine for its financial support through the grant  
471 609-2010 “projet emergent”. The Ph.D grant of Mathilde Royer was co-funded by INRA  
472 (Département Environnement et Agronomie) and the Regional Council of Lorraine (grant  
473 692-2009). We thank Aude Fauvet, José Fabre and Guillaume Garcia (INRA) for their  
474 important technical contribution to this work, Cédric Paris (Université de Lorraine) for the



475 sample analyses in LC–MS. We also thank Dr. Cindy Morris for providing the strain of  
476 *Pseudomonas* and for fruitful discussions. We are grateful to Dr. Ernest A. Kirkby (Faculty  
477 of Biological Sciences, University of Leeds, UK) for revising this manuscript and correcting  
478 the English style.

## 7. References

- 480 [1] FAO, Glossary on Organic Agriculture, in, Natural Resources Management and  
481 Environment Department, Rome, 2009.
- 482 [2] T. Doré, D. Makowski, E. Malézieux, N. Munier-Jolain, M. Tchamitchian, P. Tittone, L.  
483 Facing up to the paradigm of ecological intensification in agronomy: Revisiting methods,  
484 concepts and knowledge, *European Journal of Agronomy*, 34 (2011) 197-210.
- 485 [3] E. Hoffland, M.L. Van Beusichem, M.J. Jeger, Nitrogen availability and susceptibility of  
486 tomato leaves to *Botrytis cinerea*, *Plant and Soil*, 210 (1999) 263-272.
- 487 [4] E. Hoffland, M.J. Jeger, M.L. Van Beusichem, Effect of nitrogen supply rate on disease  
488 resistance in tomato depends on the pathogen, *Plant and Soil*, 218 (2000) 239-247.
- 489 [5] P.S. Solomon, K.-C. Tan, R.P. Oliver, The nutrient supply of pathogenic fungi; a fertile  
490 field for study, *Molecular Plant Pathology*, 4 (2003) 203-210.
- 491 [6] K. Mittelstraß, D. Treutter, M. Pleßl, W. Heller, E.F. Elstner, I. Heiser, Modification of  
492 primary and secondary metabolism of potato plants by nitrogen application differentially  
493 affects resistance to *Phytophthora infestans* and *Alternaria solani*, *Plant Biology*, 8 (2006)  
494 653-661.
- 495 [7] U.S. Lea, R. Slimestad, P. Smedvig, C. Lillo, Nitrogen deficiency enhances expression of  
496 specific MYB and bHLH transcription factors and accumulation of end products in the  
497 flavonoid pathway, *Planta*, 225 (2007) 1245-1253.

- 1  
2  
3  
4  
5  
6  
7  
8  
9  
10  
11  
12  
13  
14  
15  
16  
17  
18  
19  
20  
21  
22  
23  
24  
25  
26  
27  
28  
29  
30  
31  
32  
33  
34  
35  
36  
37  
38  
39  
40  
41  
42  
43  
44  
45  
46  
47  
48  
49  
50  
51  
52  
53  
54  
55  
56  
57  
58  
59  
60  
61  
62  
63  
64  
65
- 498 [8] C. Bénard, H. Gautier, F. Bourgaud, D. Grasselly, B. Navez, C. Caris-Veyrat, M. Weiss,  
499 M. Génard, Effects of low nitrogen supply on tomato (*Solanum lycopersicum*) fruit yield and  
500 quality with special emphasis on sugars, acids, ascorbate, carotenoids, and phenolic  
501 compounds, *Journal of Agricultural and Food Chemistry*, 57 (2009) 4112-4123.
- 502 [9] J. Le Bot, C. Bénard, C. Robin, F. Bourgaud, S. Adamowicz, The 'trade-off' between  
503 synthesis of primary and secondary compounds in young tomato leaves is altered by nitrate  
504 nutrition: experimental evidence and model consistency, *Journal of Experimental Botany*, 60  
505 (2009) 4301-4314.
- 506 [10] R. Larbat, J. Le Bot, F. Bourgaud, C. Robin, S. Adamowicz, Organ-specific responses of  
507 tomato growth and phenolic metabolism to nitrate limitation, *Plant Biology*, 14 (2012) 760-  
508 769.
- 509 [11] M. Royer, R. Larbat, J. Le Bot, S. Adamowicz, C. Robin, Is the C:N ratio a reliable  
510 indicator of C allocation to primary and defence-related metabolisms in tomato?,  
511 *Phytochemistry*, 88 (2013) 25-33, DOI : 10.1016/j.phytochem.2012.1012.1003.
- 512 [12] D.A. Herms, W.J. Mattson, The dilemma of plants: to grow or defend, *The quarterly*  
513 *Review of Biology*, 67 (1992) 283-335.
- 514 [13] K. Verhoeff, Studies on *Botrytis cinerea* in tomatoes. Mycelial development in plants  
515 growing in soil with various nutrient levels, as well as in internodes of different age,  
516 *Netherlands Journal of Plant Pathology*, 71 (1965) 167-175.
- 517 [14] F. Lecompte, M.A. Abro, P.C. Nicot, Contrasted responses of *Botrytis cinerea* isolates  
518 developing on tomato plants grown under different nitrogen nutrition regimes, *Plant Pathol.*,  
519 59 (2010) 891-899.
- 520 [15] I. Berber, S. Ekin, P. Battal, H. Onlu, M.E. Erez, Levels of Selected Trace Elements,  
521 Phytohormones, and Sugars in *Pseudomonas*-Infected *Lycopersicum esculantum* Mill Plants,  
522 *Biological Trace Element Research*, 133 (2010) 98-109.

- 1  
2  
3  
4  
5  
6  
7  
8  
9  
10  
11  
12  
13  
14  
15  
16  
17  
18  
19  
20  
21  
22  
23  
24  
25  
26  
27  
28  
29  
30  
31  
32  
33  
34  
35  
36  
37  
38  
39  
40  
41  
42  
43  
44  
45  
46  
47  
48  
49  
50  
51  
52  
53  
54  
55  
56  
57  
58  
59  
60  
61  
62  
63  
64  
65
- 523 [16] J.B. Jones, J.P. Jones, J.W. Miller, Pith necrosis of tomato, in, Florida Department of  
524 Agriculture and Consumer Services, 1982, pp. Plant Pathology Circular no. 243.
- 525 [17] D. Blancard, Les maladies de la tomate: Identifier, connaître, maîtriser, Editions Quae,  
526 2009, ISBN 978-2-7592-0328-4.
- 527 [18] M.P. López-Gresa, F. Maltese, J.M. Bellés, V. Conejero, H.K. Kim, Y.H. Choi, R.  
528 Verpoorte, Metabolic response of tomato leaves upon different plant–pathogen interactions,  
529 Phytochemical Analysis, 21 (2010) 89-94.
- 530 [19] J.L. Ward, S. Forcat, M. Beckmann, M. Bennett, S.J. Miller, J.M. Baker, N.D. Hawkins,  
531 C.P. Vermeer, C. Lu, W. Lin, W.M. Truman, M.H. Beale, J. Draper, J.W. Mansfield, M.  
532 Grant, The metabolic transition during disease following infection of *Arabidopsis thaliana* by  
533 *Pseudomonas syringae* pv. tomato, The Plant Journal, 63 (2010) 443-457.
- 534 [20] S. Berger, M. Papadopoulos, U. Schreiber, W. Kaiser, T. Roitsch, Complex regulation of  
535 gene expression, photosynthesis and sugar levels by pathogen infection in tomato,  
536 Physiologia Plantarum, 122 (2004) 419-428.
- 537 [21] M.J. Stout, R.A. Brovont, S.S. Duffey, Effect of nitrogen availability on expression of  
538 constitutive and inducible chemical defenses in tomato, *Lycopersicon esculentum*, Journal of  
539 Chemical Ecology, 24 (1998) 945-963.
- 540 [22] L. Zacarés, M.P. López-Gresa, J. Fayos, J. Primo, J.M. Bellés, V. Conejero, Induction of  
541 *p*-coumaroyldopamine and feruloyldopamine, two novel metabolites, in tomato by the  
542 bacterial pathogen *Pseudomonas syringae*, Molecular Plant-Microbe Interactions, 20 (2007)  
543 1439-1448.
- 544 [23] M.P. López-Gresa, C. Torres, L. Campos, P. Lisón, I. Rodrigo, J.M. Bellés, V. Conejero,  
545 Identification of defence metabolites in tomato plants infected by the bacterial pathogen  
546 *Pseudomonas syringae*, Environmental and Experimental Botany, 74 (2011) 216-228.

- 547 [24] R. Larbat, C. Paris, J. Le Bot, S. Adamowicz, Phenolic characterization and variability  
1  
2 548 in leaves, stems and roots of Micro-Tom and patio tomatoes, in response to nitrogen  
3  
4 549 limitation, *Plant Science*, 224 (2014) 62-73.  
5  
6  
7 550 [25] N. Kocal, U. Sonnewald, S. Sonnewald, Cell wall-bound invertase limits sucrose export  
8  
9 551 and is involved in symptom development and inhibition of photosynthesis during compatible  
10  
11 552 interaction between tomato and *Xanthomonas campestris* pv *vesicatoria*, *Plant*  
12  
13 553 *Physiology* 148 (2008) 1523-1536.  
14  
15  
16  
17 554 [26] S. Adamowicz, J. Le Bot, Altering young tomato plant growth by nitrate and CO<sub>2</sub>  
18  
19 555 preserves the proportionate relation linking long-term organic-nitrogen accumulation to  
20  
21 556 intercepted radiation, *New Phytologist*, 180 (2008) 663-672.  
22  
23  
24  
25 557 [27] R. Huanosto Magaña, S. Adamowicz, L. Pagès, Diel changes in nitrogen and carbon  
26  
27 558 resource status and use for growth in young plants of tomato (*Solanum lycopersicum*), *Annals*  
28  
29 559 *of Botany*, 103 (2009) 1025-1037.  
30  
31  
32 560 [28] S. Adamowicz, J. Le Bot, R. Huanosto Magana, J. Fabre, Totomatix: a novel automatic  
33  
34 561 set-up to control diurnal, diel and long-term plant nitrate nutrition, *Annals of Botany*, 109  
35  
36 562 (2012) 309-319.  
37  
38  
39 563 [29] S. Adamowicz, J. Le Bot, Analysis of bias in the calculation and measurement of plant  
40  
41 564 mineral uptake rates, *Plant and Soil*, 373 (2013) 967-980.  
42  
43  
44 565 [30] C.R. Buell, V. Joardar, M. Lindeberg, J. Selengut, I.T. Paulsen, M.L. Gwinn, R.J.  
45  
46 566 Dodson, R.T. Deboy, A.S. Durkin, J.F. Kolonay, R. Madupu, S. Daugherty, L. Brinkac, M.J.  
47  
48 567 Beanan, D.H. Haft, W.C. Nelson, T. Davidsen, N. Zafar, L.W. Zhou, J. Liu, Q.P. Yuan, H.  
49  
50 568 Khouri, N. Fedorova, B. Tran, D. Russell, K. Berry, T. Utterback, S.E. Van Aken, T.V.  
51  
52 569 Feldblyum, M. D'Ascenzo, W.L. Deng, A.R. Ramos, J.R. Alfano, S. Cartinhour, A.K.  
53  
54 570 Chatterjee, T.P. Delaney, S.G. Lazarowitz, G.B. Martin, D.J. Schneider, X.Y. Tang, C.L.  
55  
56  
57  
58 571 Bender, O. White, C.M. Fraser, A. Collmer, The complete genome sequence of the

572 *Arabidopsis* and tomato pathogen *Pseudomonas syringae* pv. *tomato* DC3000, Proc. Natl.  
1  
2 573 Acad. Sci. U. S. A., 100 (2003) 10181-10186.  
3  
4  
5 574 [31] O. Berge, C.L. Monteil, C. Bartoli, C. Chandeysson, C. Guilbaud, D.C. Sands, C.E.  
6  
7 575 Morris, A user's guide to a data base of the diversity of *Pseudomonas syringae* and its  
8  
9 576 application to classifying strains in this phylogenetic complex, PLoS ONE 9 (2014) e105547.  
10  
11 577 doi:10.1371/journal.pone.010554  
12  
13  
14 578 [32] F.L. Lukezic, *Pseudomonas corrugata*, a pathogen of tomato isolated from symptomless  
15  
16 579 alfalfa roots, Phytopathology 97 (1979) 27-31.  
17  
18  
19 580 [33] L. Sutra, F. Siverio, M.M. Lopez, G. Hunault, C. Bollet, L. Gardan, Taxonomy of  
20  
21 581 *Pseudomonas* strains isolated from tomato pith necrosis : emended description of *P.*  
22  
23 582 *corrugata* and proposal of three unnamed fluorescent *Pseudomonas* genome species, Int. J.  
24  
25 583 Syst. Bacteriol. 47 (1997) 1020-1033.  
26  
27  
28 584 [34] C.E. Morris, D.C. Sands, B.A. Vinatzer, C. Glaux, C. Guilbaud, A. Buffiere, S.C. Yan,  
29  
30 585 H. Dominguez, B.M. Thompson, The life history of the plant pathogen *Pseudomonas*  
31  
32 586 *syringae* is linked to the water cycle, The Isme Journal, 2 (2008) 321-334.  
33  
34  
35 587 [35] R.D. Gitaitis, M.J. Sasser, R.W. Beaver, T.B. McInnes, R.E. Stall, Pectolytic  
36  
37 588 Xanthomonads in mixed infections with *Pseudomonas syringae* pv. *syringae*, *P. syringae* pv.  
38  
39 589 *tomato*, and *Xanthomonas campestris* pv. *vesicatoria* in tomato and pepper transplants.  
40  
41 590 Phytopathology 77 (1987) 611-615.  
42  
43  
44 591 [36] M.D. Diallo, C.L. Monteil, B.A. Vinatzer, C.R. Clarke, C. Glaux, C. Guilbaud, C.  
45  
46 592 Desbiez, C.E. Morris, *Pseudomonas syringae* naturally lacking the canonical type III  
47  
48 593 secretion system are ubiquitous in nonagricultural habitats, are phylogenetically diverse and  
49  
50 594 can be pathogenic. The ISME Journal 6 (2012) 1325-35.  
51  
52  
53  
54  
55  
56  
57  
58  
59  
60  
61  
62  
63  
64  
65

- 1  
2  
3  
4  
5  
6  
7  
8  
9  
10  
11  
12  
13  
14  
15  
16  
17  
18  
19  
20  
21  
22  
23  
24  
25  
26  
27  
28  
29  
30  
31  
32  
33  
34  
35  
36  
37  
38  
39  
40  
41  
42  
43  
44  
45  
46  
47  
48  
49  
50  
51  
52  
53  
54  
55  
56  
57  
58  
59  
60  
61  
62  
63  
64  
65
- 595 [37] L. Gomez, R. Rubio, M. Augé, A new procedure for extraction and measurement of  
596 soluble sugars in ligneous plants, Journal of the Sciences of Food and Agriculture 82 (2002)  
597 360-369.
- 598 [38] G. Ricochon, C. Paris, M. Girardin, L. Muniglia, Highly sensitive, quick and simple  
599 quantification method for mono and disaccharides in aqueous media using liquid  
600 chromatography-atmospheric pressure chemical ionization-mass spectrometry (LC-APCI-  
601 MS), Journal of Chromatography B, 879 (2011) 1529-1536.
- 602 [39] C. Barbaroux, N. Bréda, E. Dufrêne, Distribution of above-ground and below-ground  
603 carbohydrates reserves in adult trees of two contrasting broad-leaved species (*Quercus*  
604 *petraea* and *Fafus sylvatica*), New Phytologist, 157 (2003) 605-615.
- 605 [40] C. Gayoso, F. Pomar, E Novo-Uzal, F. Merino, O. Martínez de Ilárduya, The Ve-  
606 mediated resistance response of the tomato to *Verticillium dahlia* involves H<sub>2</sub>O<sub>2</sub>, peroxidase  
607 and lignins and drives PAL gene expression, BMC Plant Biology, 10 (2010) 232.
- 608 [41] J.L. Ward, S. Forcat, M. Beckmann, M. Bennett, S.J. Miller, J.M. Baker, N.D. Hawkins,  
609 C.P. Vermeer, C. Lu, W. Lin, W.M. Truman, M.H. Beale, J. Draper, J.W. Mansfield, M.  
610 Grant, The metabolic transition during disease following infection of *Arabidopsis thaliana* by  
611 *Pseudomonas syringae* pv. tomato, The Plant Journal 63 (2010), 443-457.
- 612 [42] H Y.H. Choi, H.K. Kim, J.M. Linthorst, J.G. Hollander, A.W.M. Lefeber, C. Erkelens,  
613 J-M. Nuzillard, R. Verpoorte, NMR metabolomics to revisit the Tobacco Mosaic Virus  
614 infection in *Nicotiana tabacum* leaves, Journal of Natural Products, 69 (2006) 742-748.
- 615 [43] W.E. Loomis, Growth-differentiation balance vs. carbohydrate-nitrogen ratio,  
616 Proceedings of the American Society of Horticultural Sciences, 29 (1932) 240-245.
- 617 [44] N. Stamp, Out of the quagmire of plant defense hypotheses, The quarterly Review of  
618 Biology, 78 (2003) 23-55.

- 619 [45] O. Kötting, J. Kossmann, S.C. Zeeman, J.R. Lloyd, Regulation of starch metabolism: the  
1 age of enlightenment?, *Curr. Opin. Plant Biol.*, 13 (2010) 320-328.
- 2  
3  
4  
5 621 [46] A. Bahaji, J. Li, Á.M. Sánchez-López, E. Baroja-Fernández, F.J. Muñoz, M. Ovecka, G.  
6  
7 622 Almagro, M. Montero, I. Ezquer, E. Etxeberria, J. Pozueta-Romero, Starch biosynthesis, its  
8  
9  
10 623 regulation and biotechnological approaches to improve crop yields, *Biotechnology Advances*,  
11  
12 624 32 (2014) 87-106.
- 13  
14 625 [47] K.B. Bonfig, U. Schreiber, A. Gabler, T. Roitsch, S. Berger, Infection with virulent and  
15  
16  
17 626 avirulent *P.syringae* strains differentially affects photosynthesis and sink metabolism in  
18  
19 627 *Arabidopsis* leaves, *Planta*, 225 (2006) 1-12.
- 20  
21  
22 628 [48] M.P. López-Gresa, P. Lisón, H.K. Kim, Y.H. Choi, R. Verpoorte, I. Rodrigo, V.  
23  
24 629 Conejero, J.M. Bellés, Metabolic fingerprinting of Tomato Mosaic Virus infected *Solanum*  
25  
26 630 *lycopersicum*, *Journal of Plant Physiology*, 169 (2012) 1586-1596.
- 27  
28  
29 631 [49] V. Catara, *Pseudomonas corrugata*: plant pathogen and/or biological resource ?,  
30  
31 632 *Molecular Plant Pathology*, 8 (2007) 233-244.
- 32  
33  
34 633 [50] H. Keller, H. Hohlfeld, V. Wray, K. Hahlbrock, D. Scheel, D. Strack, Changes in the  
35  
36 634 accumulation of soluble and cell wall-bound phenolics in elicitor-treated cell suspension  
37  
38  
39 635 cultures and fungus-infected leaves of *Solanum tuberosum*, *Phytochemistry*, 42 (1996) 389-  
40  
41 636 396.
- 42  
43  
44 637 [51] C.J. Baker, B.D. Whitaker, D.P. Roberts, N.M. Mock, C.P. Rice, K.L. Deahl, A.A.  
45  
46 638 Aver'yanov, Induction of redox sensitive extracellular phenolics during plant-bacterial  
47  
48  
49 639 interactions, *Physiological and Molecular Plant Pathology*, 66 (2005) 90-98.
- 50  
51 640 [52] E. Von Roepenack-Lahaye, M. Newman, S. Schornack, K.E. Hammond-Kosack, T.  
52  
53 641 Lahaye, J.D.G. Jones, M.J. Daniels, J.M. Dow, *p*-Coumaroylnoradrenaline, a novel plant  
54  
55 642 metabolite implicated in tomato defense against pathogens, *Journal of Biological Chemistry*,  
56  
57 643 278 (2003) 43373-43383.
- 58  
59  
60  
61  
62  
63  
64  
65

- 644 [53] J.E. Bassard, P. Ullmann, F. Bernier, D. Werck-Reichhart, Phenolamides: Bridging  
1 polyamines to the phenolic metabolism, *Phytochemistry*, 71 (2010) 1808-1824.
- 645  
2  
3  
4  
5 646 [54] P.J. Facchini, J. Hagel, K.G. Zulak, Hydroxycinnamic acid amide metabolism:  
6  
7 647 physiology and biochemistry, *Canadian Journal of Botany*, 80 (2002) 577-589.
- 8  
9  
10 648 [55] J. Negrel, M. Paynot, F. Javelle, Purification and Properties of Putrescine  
11  
12 649 Hydroxycinnamoyl Transferase from Tobacco (*Nicotiana tabacum*) Cell Suspensions, *Plant*  
13  
14 650 *Physiology*, 98 (1992) 1264-1269.
- 15  
16  
17 651 [56] R. Niggeweg, A. Michael, C. Martin, Engineering plants with increased levels of the  
18  
19 652 antioxidant chlorogenic acid, *Nature Biotechnology*, 22 (2004) 746-754.
- 20  
21  
22 653 [57] T. Arwiyanto, K. Sakata, M. Goto, S. Tsuyumu, Y. Takikawa, Induction of tomatine in  
23  
24 654 tomato plant by an avirulent strain of *Pseudomonas solanacearum* isolated from *Strelitzia*  
25  
26 655 *reginae*, *Annals of the Phytopathological Society of Japan*, 60 (1994) 288-294.
- 27  
28  
29 656 [58] A.C. Riach, M.V.L. Perera, H.V. Florance, S.D. Penfield, J.K. Hill, Analysis of plant  
30  
31 657 metabolites reveals no common response to insect herbivory by *Pieris rapae* in three related  
32  
33 658 host-plant species, *Journal of Experimental Botany*, 66 (2015) 2547-2556.
- 34  
35  
36 659 [59] D.L. Gustine, R.T. Sherwood, B.G. Moyer, F.L. Lukezic, Metabolites from  
37  
38 660 *Pseudomonas corrugata* elicit phytoalexin biosynthesis in white clover, *Physiology and*  
39  
40 661 *Biochemistry*, 80 (1990) 1427-1432.
- 41  
42  
43 662 [60] J.M. Bellés, R. Garro, J. Fayos, P. Navarro, J. Primo, V. Conejero, Gentisic Acid As a  
44  
45 663 Pathogen-Inducible Signal, Additional to Salicylic Acid for Activation of Plant Defenses in  
46  
47 664 Tomato, *Molecular Plant-Microbe Interactions*, 12 (1999) 227-235.
- 48  
49  
50  
51 665 [61] S. Desender, O. Klarzynski, P. Potin, M.R. Barzic, D. Andrivon, F. Val,  
52  
53 666 Lipopolysaccharides of *Pectobacterium atrosepticum* and *Pseudomonas corrugata* Induce  
54  
55 667 Different Defence Response Patterns in Tobacco, Tomato, and Potato, *Plant Biology*, 8  
56  
57 668 (2006) 636-645.
- 58  
59  
60  
61  
62  
63  
64  
65



## 669 8. Figures Captions

670 **Figure 1:** a. Leaf pictures shot 12 days after infiltration of water or inoculation with *P.*  
671 *syringae* under HN or LN fertilization - b. Pictures of the stem longitudinal section shot 12  
672 days after infiltration of water or inoculation with *P. corrugata* under HN or LN fertilization.

673 **Figure 2:** Response of tomato growth and leaf net CO<sub>2</sub> exchanges rates (CER, μmol m<sup>-2</sup> s<sup>-1</sup>)  
674 responses to N nutrition and infection by *P. syringae* (a, c, e, g) and by *P. corrugata* (b, d, f).  
675 Growth measurements were performed one and 12 days after inoculation: dry shoot weights  
676 (g per plant, a-b), area of inoculated leaves (cm<sup>2</sup>, e) and of adjacent leaves (cm<sup>2</sup>, f-g). Leaf net  
677 CO<sub>2</sub> exchange rates (CER, μmol m<sup>-2</sup> s<sup>-1</sup>) at light (190 μmol PPF) (c) and in the darkness (d)  
678 were performed on non-infected leaf zones, 24 hours after *Pseudomonas* inoculation. LN and  
679 HN denote low and high N nutrition offered to tomato plants during growth. Vertical bars  
680 denote SE (n=6)

681 **Figure 3:** Carbohydrate concentrations (glucose G, fructose F, sucrose Su and starch S, mg g<sup>-1</sup>  
682 DW) in organs infected by *P. syringae* (leaves: a, b) or *P. corrugata* (stems: c, d). Abscissa  
683 and ordinate concern organs from LN and HN tomato plants, respectively. The measurements  
684 were performed one (a, c) and twelve days (b, d) after *Pseudomonas* inoculation. Symbols  
685 ▲ and ■ denote mock inoculated and infected plants, respectively. The diagonals (straight  
686 lines) indicate where LN = HN. It follows that data above the diagonals are depressed by LN,  
687 whereas below the line, they are enhanced by LN. Vertical and horizontal bars denote SE  
688 (n=6).

689 **Figure 4:** Defence metabolite concentrations (chlorogenic acid CA, rutin R, tomatin T,  
690 kaempferol-rutinoside KR and caffeoylputrescine CP, mg g<sup>-1</sup> DW) in organs infected by *P.*  
691 *syringae* (leaves: a, b) or *P. corrugata* (stems: c, d). Abscissa and ordinate concern organs  
692 from LN and HN tomato plants, respectively. The measurements were performed one (a, c)

693 and twelve days (b, d) after *Pseudomonas* inoculation. Kaempferol-rutinoside was detected  
694 only in leaves. Symbols ▲ and ■ denote mock inoculated and infected plants, respectively.  
695 The diagonals (straight lines) indicate where LN = HN. It follows that data above the  
696 diagonals are depressed by LN, whereas below the line, they are enhanced by LN. Vertical  
697 and horizontal bars denote SE (n=6).

**Figure 5:** Primary and secondary metabolite concentrations (chlorogenic acid CA, rutin R,  
starch S, sucrose Su, glucose G, fructose F and caffeoylputrescine CP, mg g<sup>-1</sup> DW) in organs  
adjacent to those infected by *P. syringae* (adjacent stems: a, b ; adjacent leaves: c, d).  
Abscissa and ordinate concern organs from LN and HN tomato plants, respectively. The  
measurements were performed one (a, c) and twelve days (b, d) after *Pseudomonas*  
inoculation. Symbols ▲ and ■ denote mock inoculated and infected plants, respectively. The  
diagonals (straight lines) indicate where LN = HN. It follows that data above the diagonals  
are depressed by LN, whereas below the line, they are enhanced by LN. Vertical and  
horizontal bars denote SE (n=6).

**Supplementary Figure 1:** U-HPLC chromatograms of soluble phenolics from *P. syringae*  
infected (A) and control (B) tomato leaf recorded at 320nm. CHA1-5: Isomers of caffeoyl  
hexaric acid; CP: Caffeoyl putrescine; CP<sub>a</sub> : minor isomer of caffeoyl putrescine; CA:  
Chlorogenic acid; CA<sub>b</sub> Chlorogenic acid isomer; Caf Der.: caffeoyl derivative; Put CoHA:  
Putative Coumaroyl HydroxyAgmatine; SG: Sinapoyl glucose; FQA: Feruloyl quinic acid;  
Fer Der: Feruloyl derivative; AR: Apio-rutin ;T: taxifoline (used as external standard); R:  
Rutin; K Der: Kaempferol derivative; KR: Kaempferol rutinoside; CT: Coumaroyl tyramine.

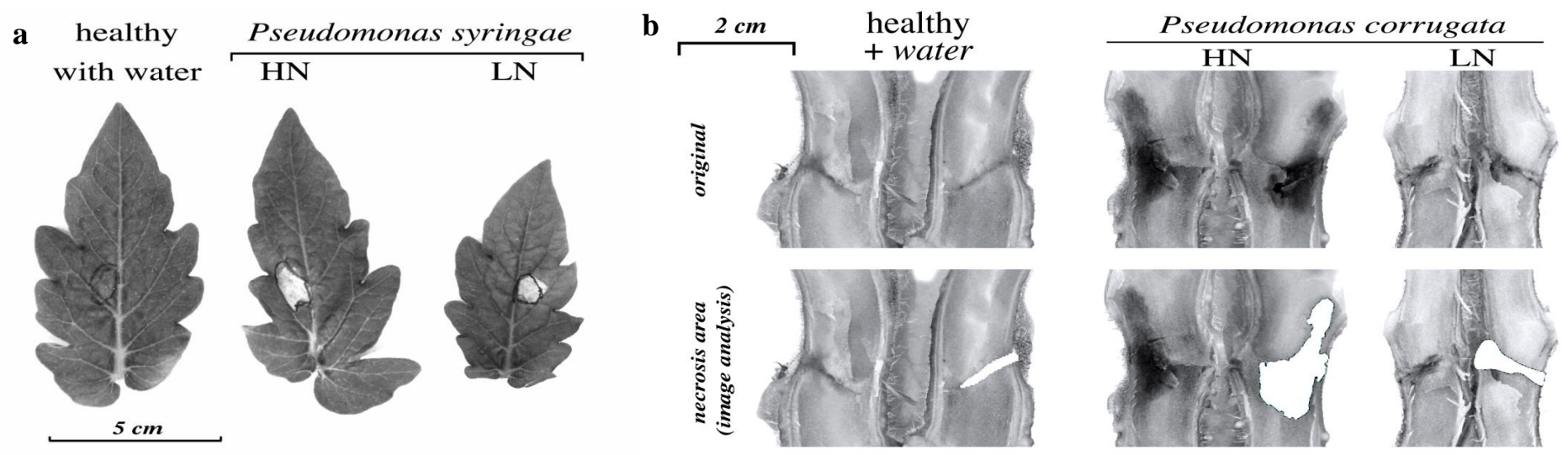
**Supplementary Figure 2:** U-HPLC chromatograms of soluble phenolics from *P.*  
*corrugata* infected (A) and control (B) tomato stem recorded at 320nm. CHA1-4: Isomers  
of caffeoyl hexaric acid; CP: Caffeoyl putrescine; CP<sub>a</sub> minor isomer of caffeoyl putrescine ;  
CA: Chlorogenic acid; CA<sub>a-b</sub> Chlorogenic acid isomers; Caf Der.: Caffeoyl derivative; FP:

1 718 Feruloyl putrescine; Put CoHA: Putative Coumaroyl HydroxyAgmatine; SG: Sinapoyl  
2  
3 719 glucose; FQA: Feruloyl quinic acid; T: taxifoline (used as external standard); Fer Der:  
4  
5 720 Feruloyl derivative; AR: Apio-rutin; R: Rutin; CT: Coumaroyl tyramine.  
6

7  
8 **721 Supplementary Table 1:** Concentration of phenolic compounds in *P. syringae* inoculated  
9  
10 722 and control leaf 1 and 12 DAI. All concentrations are given in  $\mu\text{g g}^{-1}$  DW. CHA1-5: Isomers  
11  
12 723 of caffeoyl hexaric acid; CP: Caffeoyl putrescine; CP<sub>a</sub>: minor isomer of caffeoyl putrescine;  
13  
14 724 CA: Chlorogenic acid; CA<sub>b</sub> Chlorogenic acid isomer; Caf Der.: caffeoyl derivative; FP:  
15  
16 725 Feruloyl putrescine; Put CoHA: Putative Coumaroyl HydroxyAgmatine; SG: Sinapoyl  
17  
18 726 glucose; FQA: Feruloyl quinic acid; Fer Der: Feruloyl derivative; AR: Apio-rutin; T:  
19  
20 727 taxifoline (used as external standard); R: Rutin; K Der: Kaempferol derivative; KR:  
21  
22 728 Kaempferol rutinoside; CT: Coumaroyl tyramine. Values are means of 6 replicates and are  
23  
24  
25 729 given +/- SE.  
26  
27  
28  
29

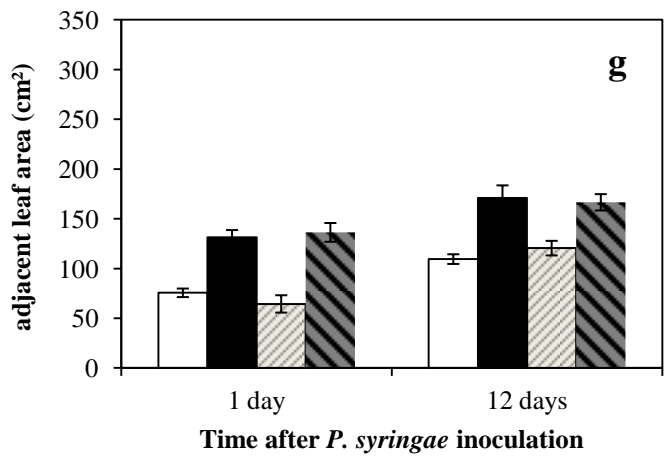
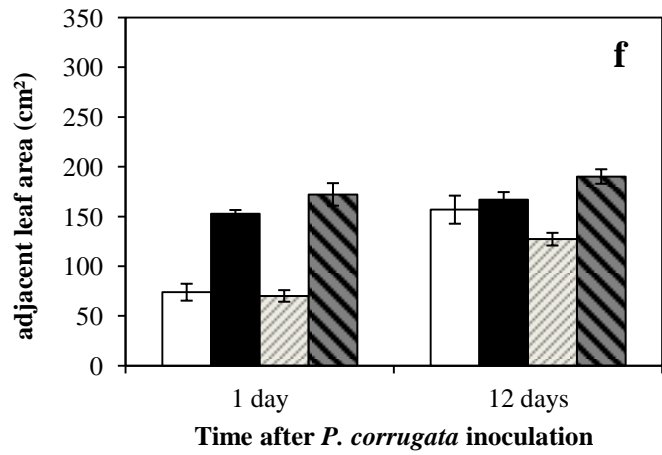
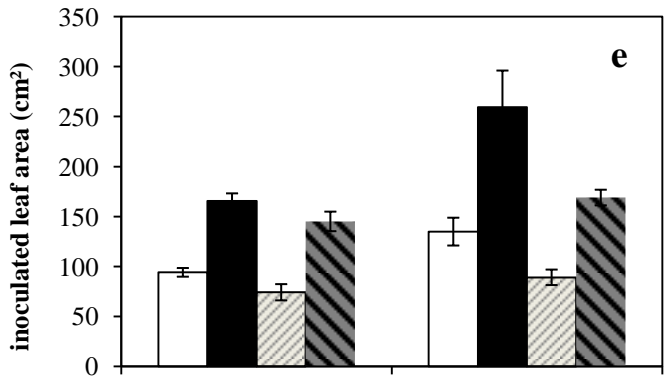
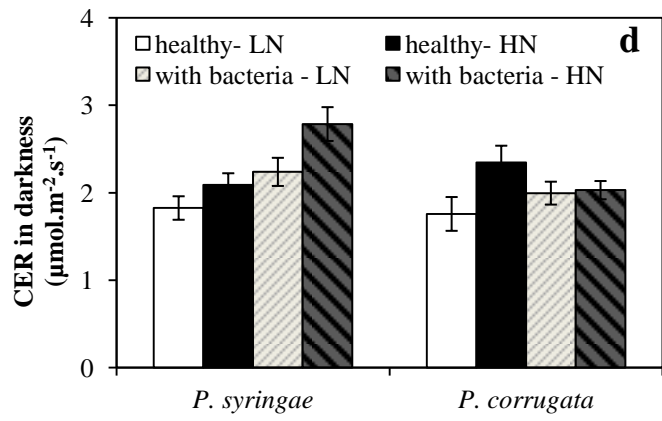
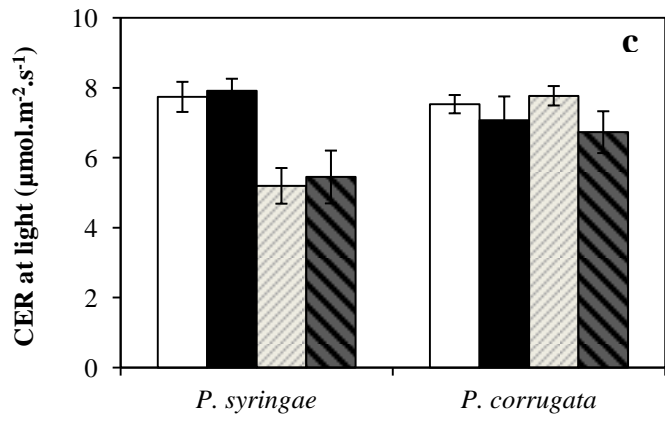
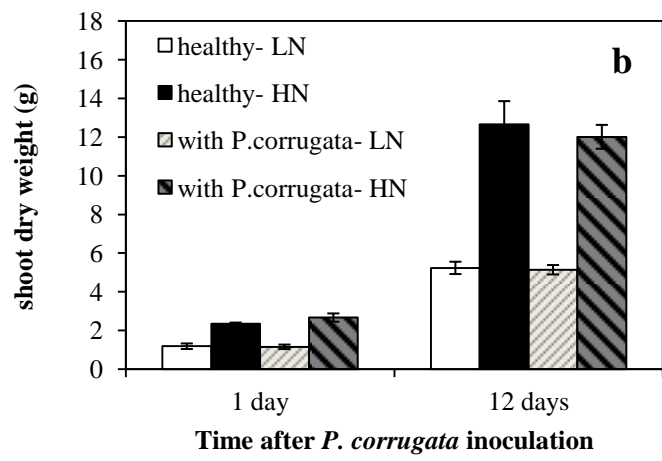
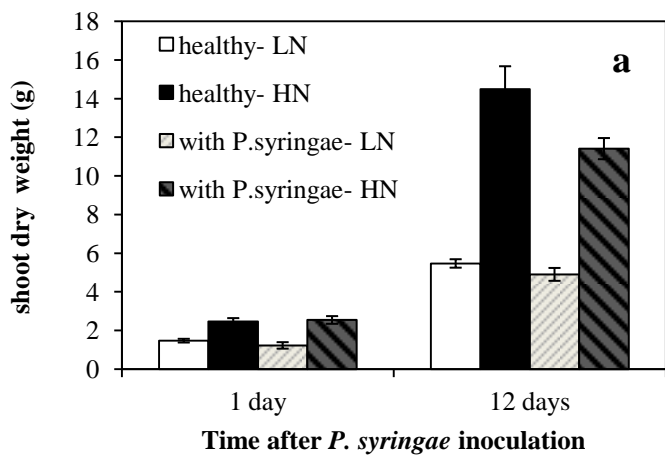
30 **730 Supplementary Table 2:** Concentration of phenolic compounds in *P. corrugata* inoculated  
31  
32 731 and control stem 1 and 12 DAI. All concentrations are given in  $\mu\text{g g}^{-1}$  DW. Molecules  
33  
34 732 abbreviations are in supplementary Table 1 legend. Values are means of 6 replicates and are  
35  
36  
37 733 given +/- SE.  
38  
39  
40  
41  
42  
43  
44  
45  
46  
47  
48  
49  
50  
51  
52  
53  
54  
55  
56  
57  
58  
59  
60  
61  
62  
63  
64  
65

Figure(s)

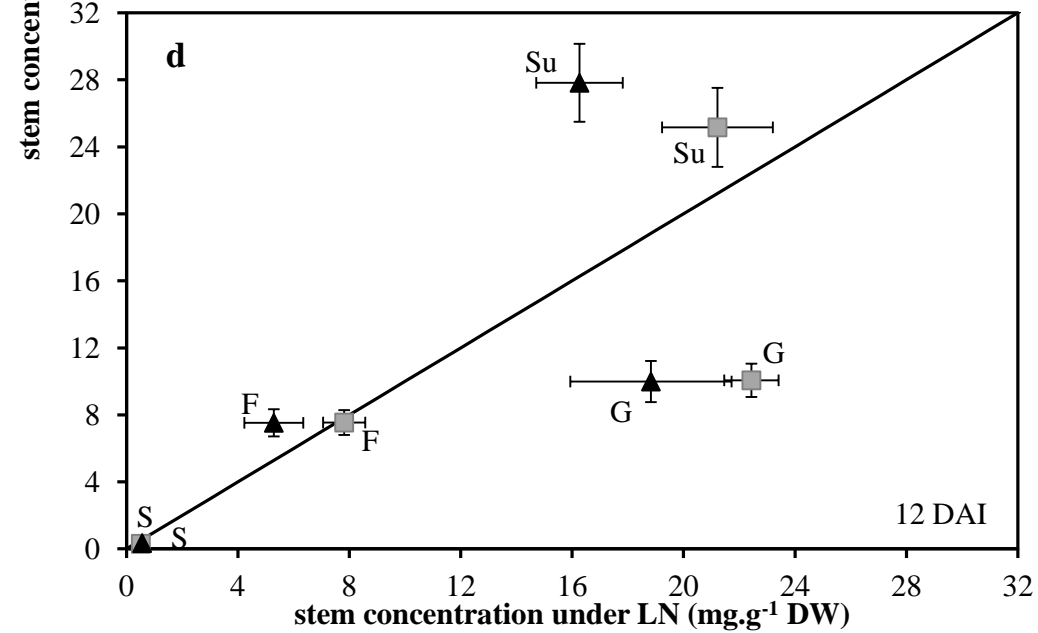
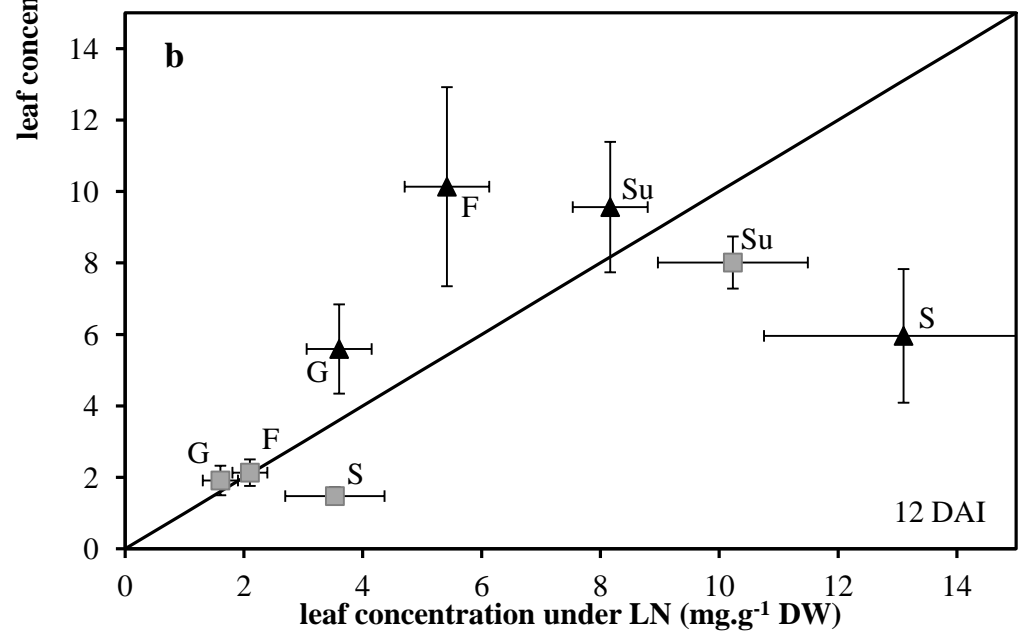
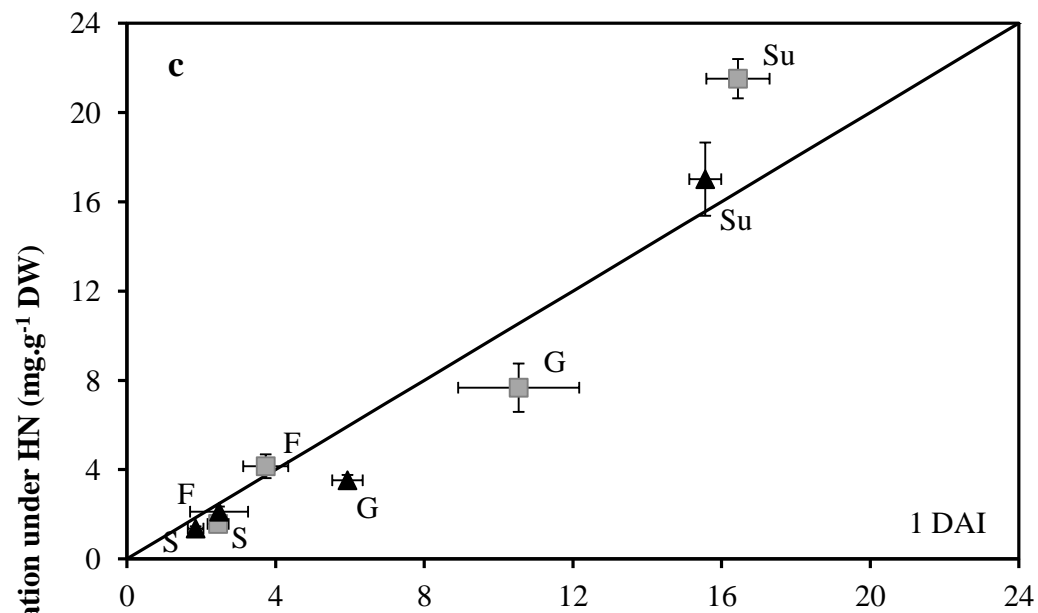
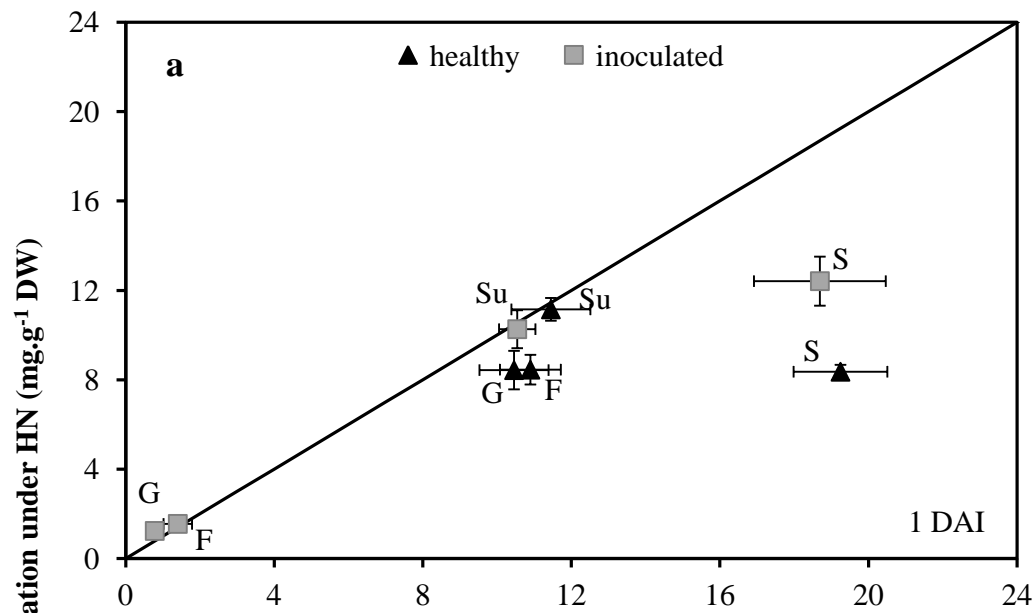


c	Healthy - LN	Healthy - HN	With <i>P. syringae</i> - LN	With <i>P. syringae</i> - HN
	Area of necrosis due to <i>P. syringae</i> on inoculated leaves (cm <sup>2</sup> )	0.07 (±0.119)	0.01 (±0.033)	3.01 (±0.453)
	Healthy - LN	Healthy - HN	With <i>P. corrugata</i> - LN	With <i>P. corrugata</i> - HN
	Area of necrosis due to <i>P. corrugata</i> in inoculated stem (cm <sup>2</sup> )	0.15 (±0.033)	0.11 (±0.065)	0.29 (±0.144)

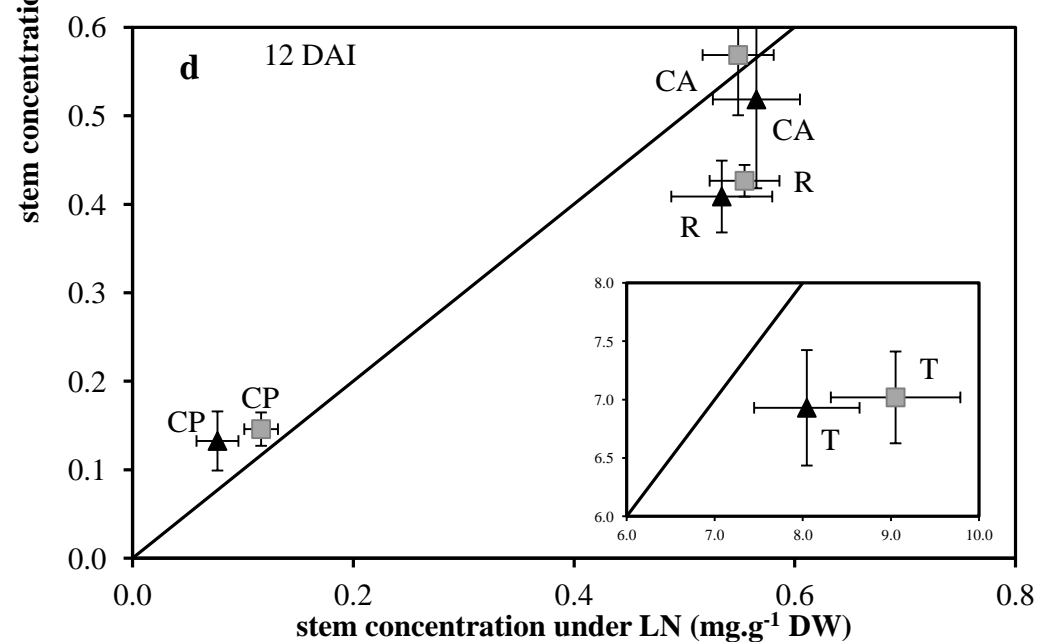
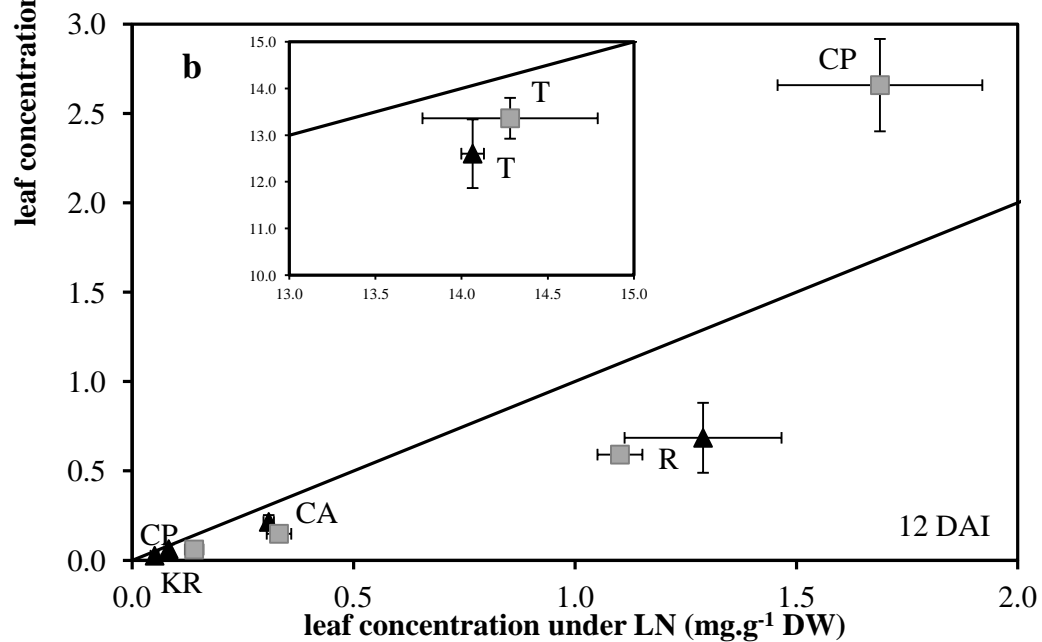
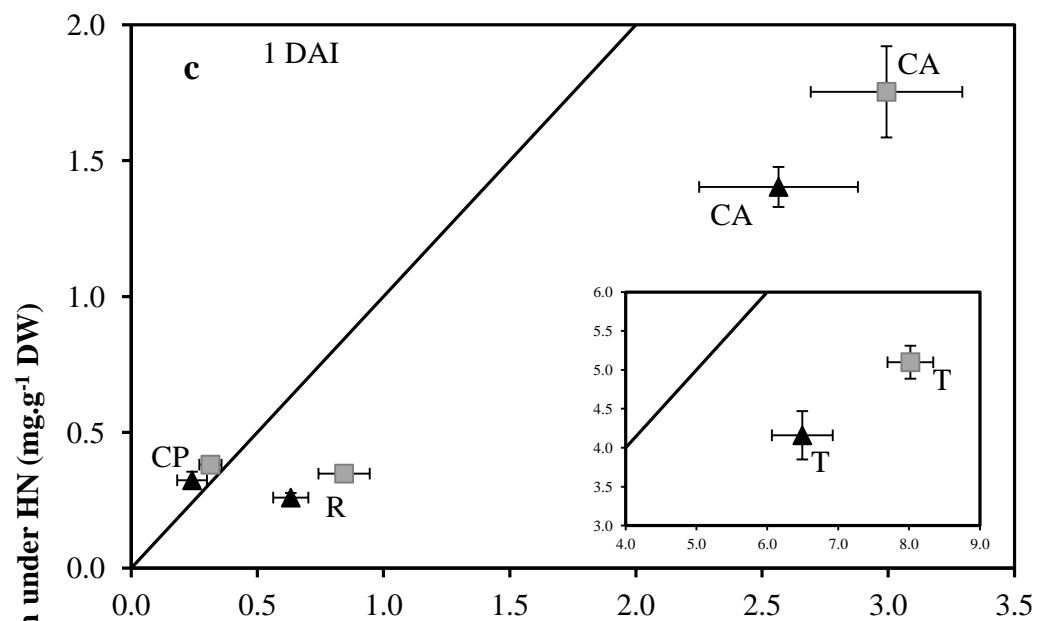
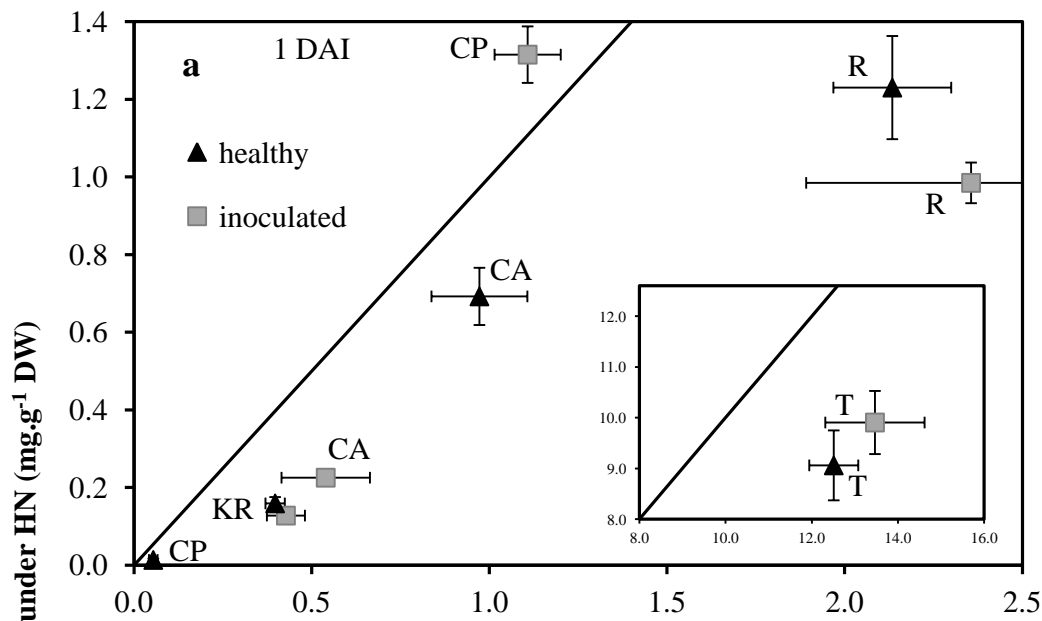
Figure(s)



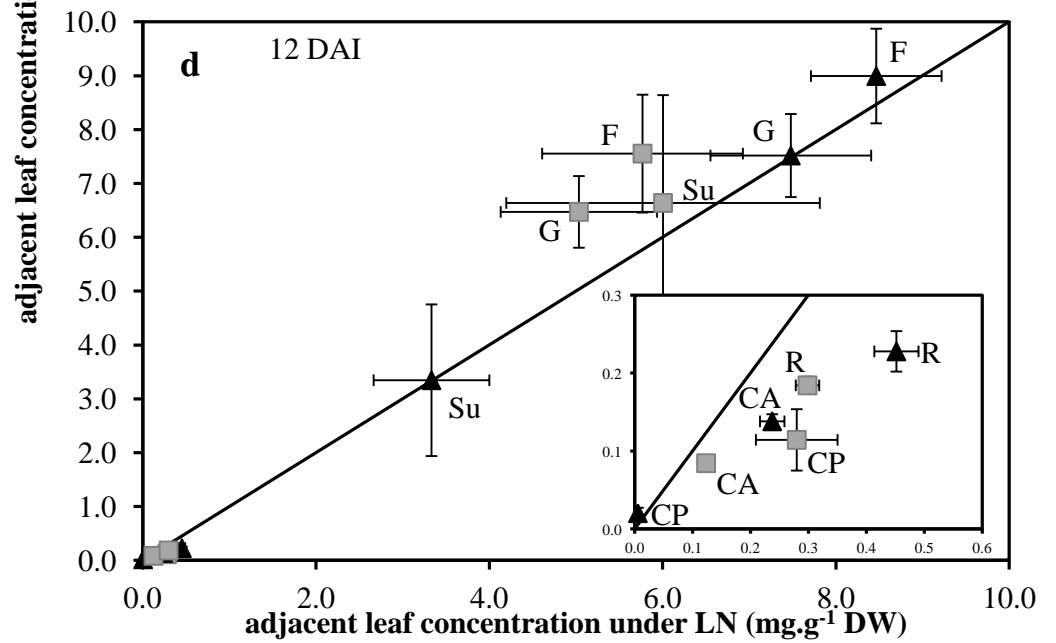
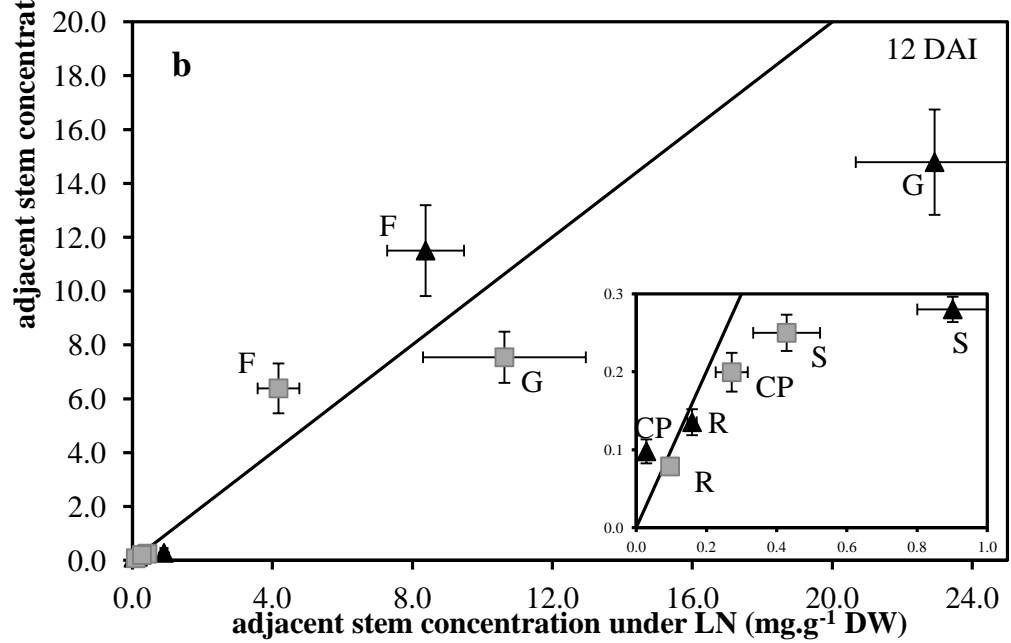
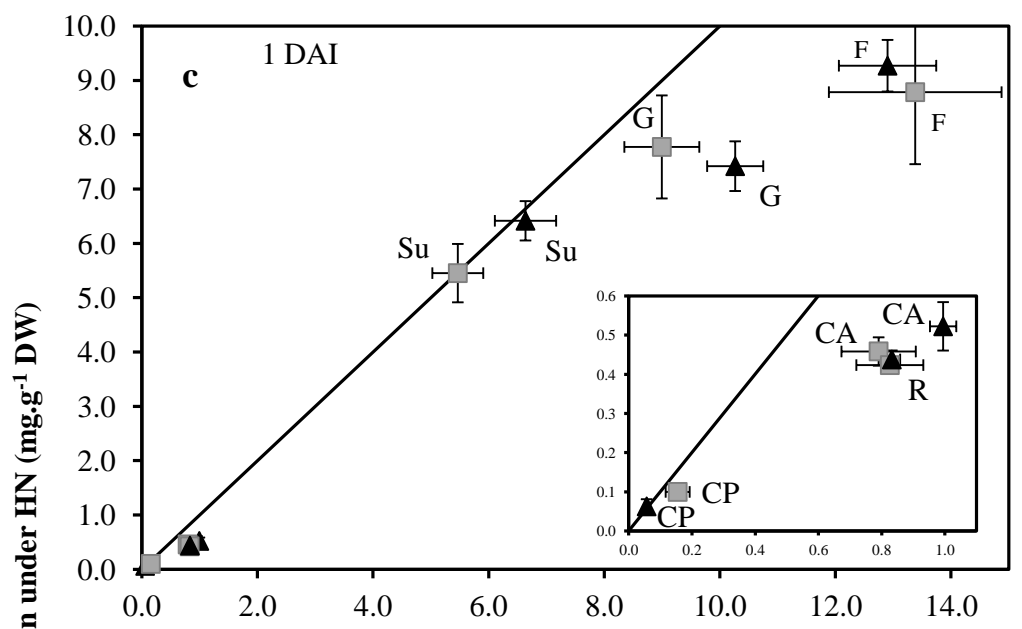
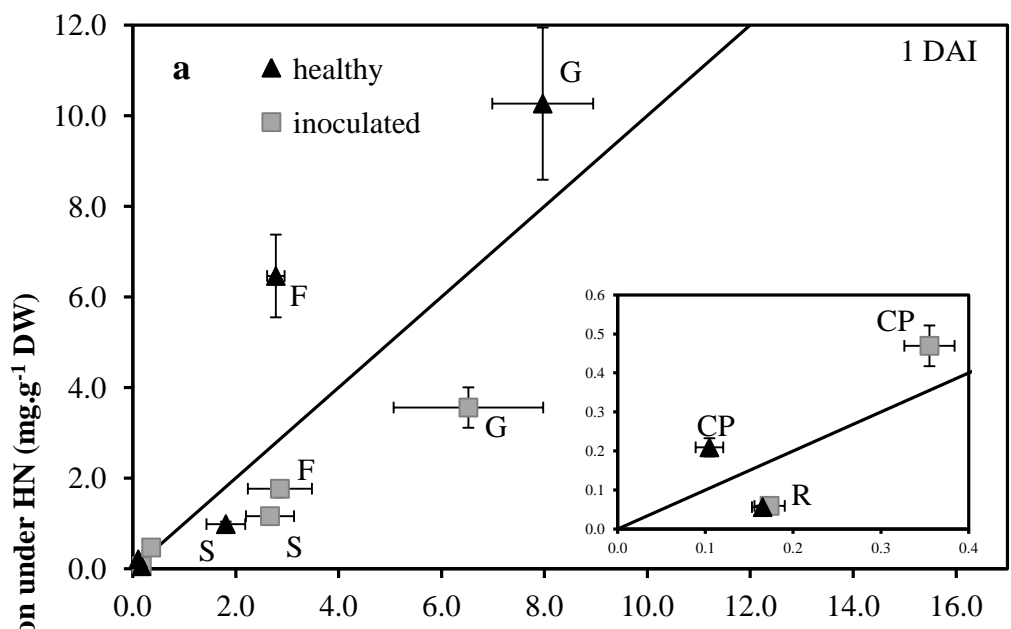
Figure(s)



Figure(s)

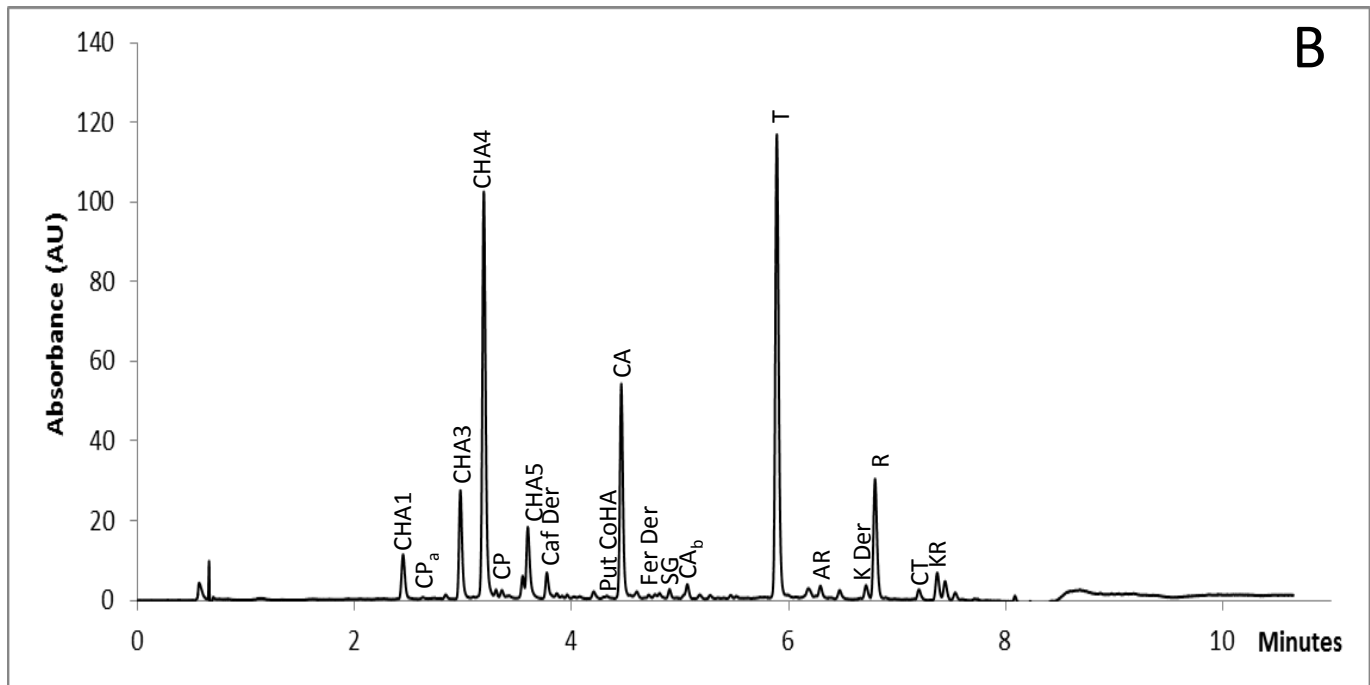
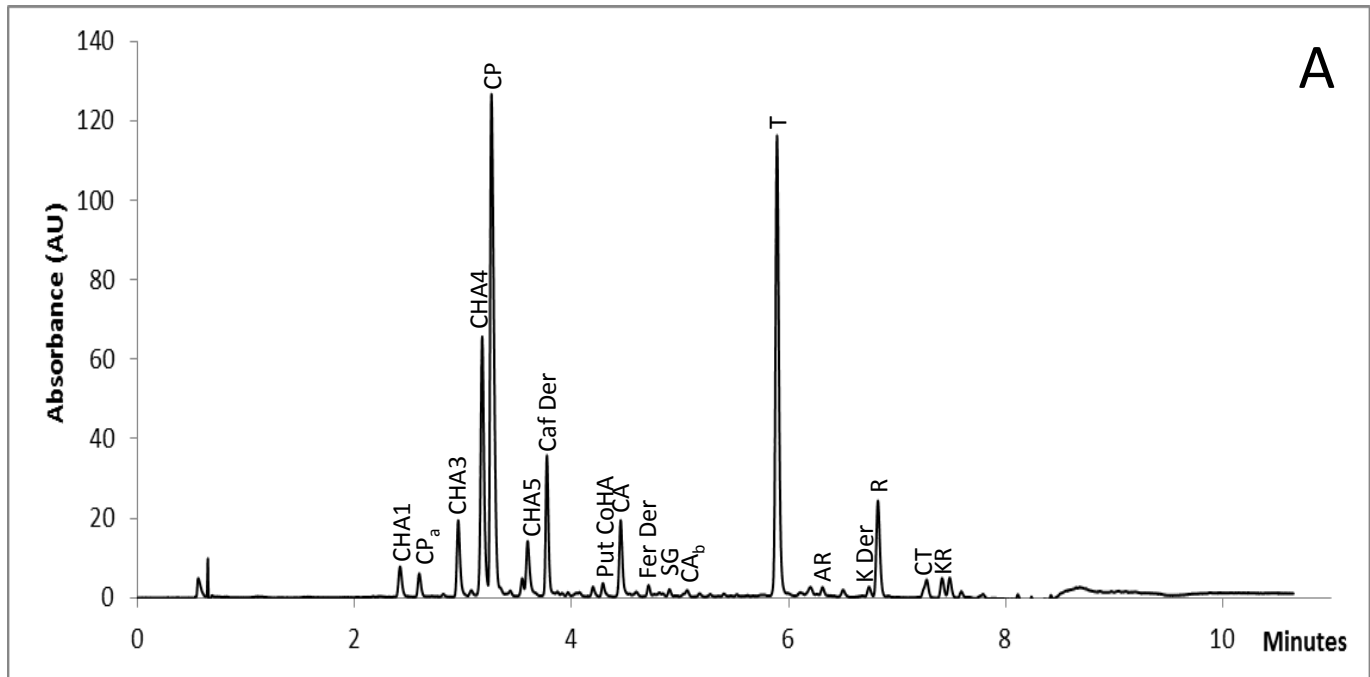


Figure(s)

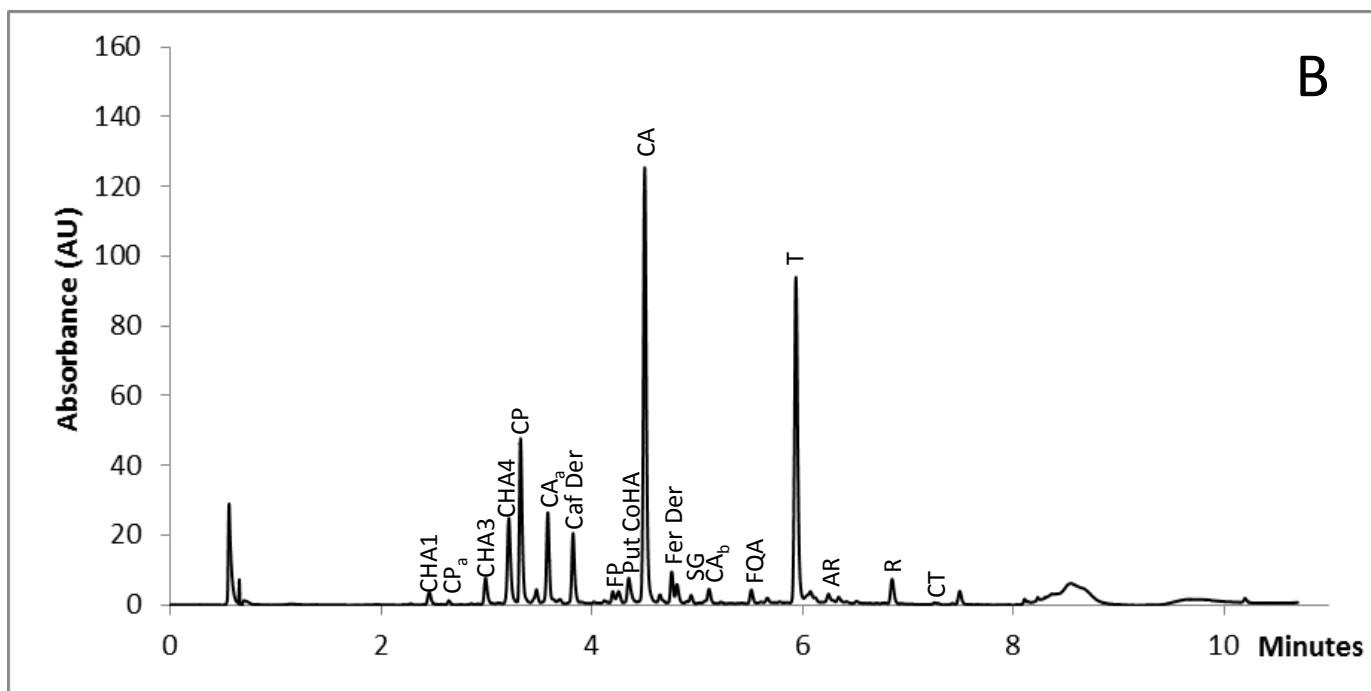
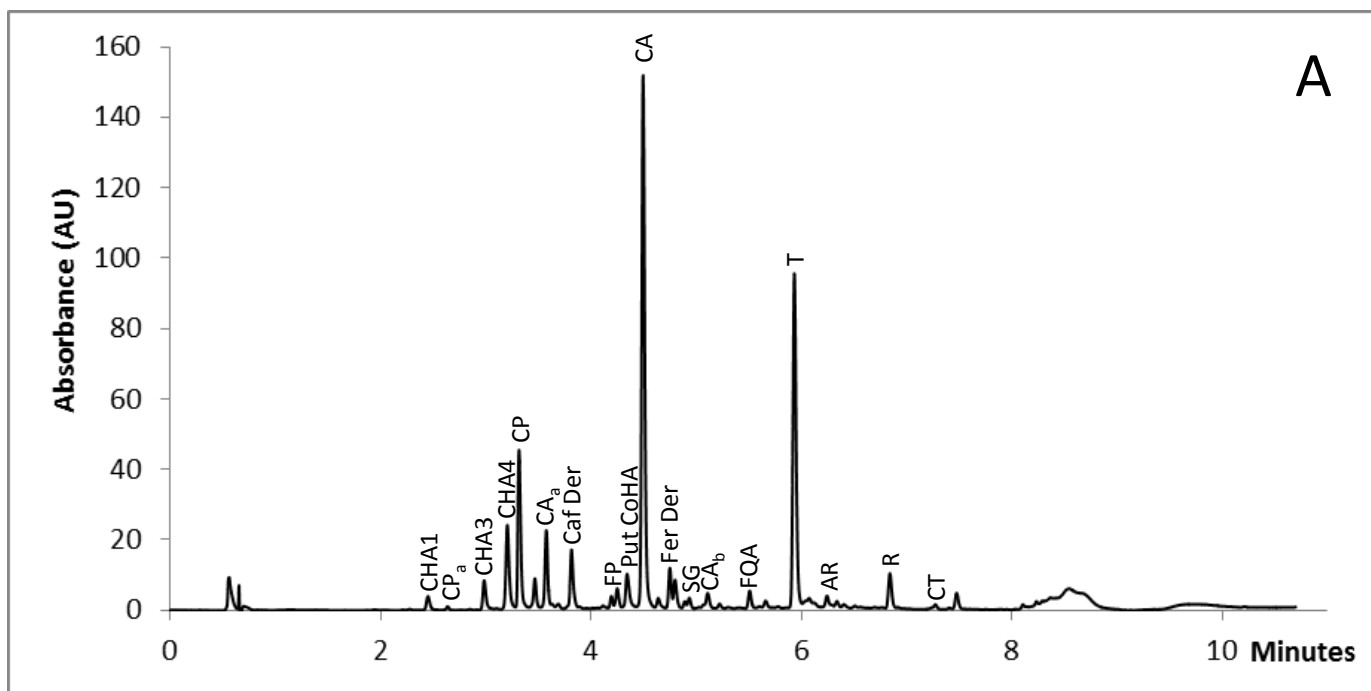




Figure(s)



Figure(s)



Table(s)

	1 DAI				12 DAI			
	Healthy		P. syringae inoculated		Healthy		P. syringae inoculated	
	LN	HN	LN	HN	LN	HN	LN	HN
<b>CHA1</b>	772 ± 96	203 ± 29	880 ± 108	135 ± 16	563 ± 21	193 ± 32	574 ± 32	225 ± 12
<b>CP<sub>a</sub></b>	2.4 ± 0.7	3.0 ± 0.1	30 ± 3	61 ± 5	5 ± 1	4 ± 1	213 ± 31	300 ± 43
<b>CHA3</b>	1721 ± 229	234 ± 68	1876 ± 248	307 ± 40	1275 ± 50	400 ± 63	1349 ± 74	505 ± 31
<b>CHA4</b>	5079 ± 535	1486 ± 231	5392 ± 834	916 ± 57	3198 ± 160	1322 ± 233	2916 ± 142	1220 ± 82
<b>CP</b>	54 ± 12	13 ± 3	1107 ± 93	1314 ± 72	51 ± 9	26 ± 7	1687 ± 231	2659 ± 258
<b>CHA5</b>	896 ± 76	332 ± 17	948 ± 134	238 ± 20	1491 ± 73	613 ± 102	1575 ± 40	821 ± 49
<b>Caf Der</b>	69 ± 9	89 ± 23	119 ± 32	252 ± 70	67 ± 3	89 ± 43	97 ± 6	202 ± 47
<b>Put CoHA</b>	14 ± 1	10 ± 1	19 ± 4	27 ± 7	22 ± 2	15 ± 3	21 ± 2	21 ± 5
<b>CA</b>	972 ± 135	692 ± 74	540 ± 124	225 ± 13	320 ± 12	223 ± 40	344 ± 29	154 ± 11
<b>Fer Der</b>	0.9 ± 0.1	1.0 ± 0.2	1.0 ± 0.3	1.6 ± 0.4	4.0 ± 0.1	3.5 ± 0.3	2.9 ± 0.1	1.5 ± 0.1
<b>SG</b>	23 ± 3	25 ± 2	21 ± 4	20 ± 1	24 ± 3	32 ± 3	43 ± 3	29 ± 5
<b>CA<sub>b</sub></b>	46 ± 8	31 ± 5	57 ± 12	26 ± 1	31 ± 2	22 ± 2	32 ± 2	19 ± 1
<b>FQA</b>	13 ± 2	6 ± 1	8 ± 1	3 ± 1	22 ± 4	10 ± 3	17 ± 3	7 ± 2
<b>AR</b>	297 ± 29	132 ± 9	293 ± 31	101 ± 4	278 ± 23	119 ± 37	281 ± 12	166 ± 6
<b>K Der</b>	245 ± 18	82 ± 4	247 ± 24	66 ± 2	192 ± 11	77 ± 30	223 ± 12	90 ± 4
<b>R</b>	2134 ± 165	1230 ± 132	2356 ± 464	984 ± 52	1290 ± 177	685 ± 196	1102 ± 51	591 ± 22
<b>CT</b>	37 ± 3	27 ± 1	47 ± 5	39 ± 3	51 ± 2	29 ± 8	38 ± 4	20 ± 2
<b>KR</b>	397 ± 27	159 ± 17	428 ± 53	127 ± 12	83 ± 2	62 ± 3	140 ± 20	60 ± 4

Table(s)

	1 DAI				12 DAI			
	Healthy		<i>P. corrugata</i> inoculated		Healthy		<i>P. corrugata</i> inoculated	
	LN	HN	LN	HN	LN	HN	LN	HN
<b>CHA1</b>	91 ± 2	42 ± 2	102 ± 4	48 ± 6	45 ± 7	26 ± 3	43 ± 5	24 ± 2
<b>CP<sub>a</sub></b>	8 ± 1	15 ± 4	7 ± 2	14 ± 4	8 ± 3	8 ± 1	8 ± 2	8 ± 1
<b>CHA3</b>	170 ± 7	81 ± 4	169 ± 34	93 ± 12	87 ± 15	48 ± 6	83 ± 10	47 ± 5
<b>CHA4</b>	536 ± 42	307 ± 22	610 ± 38	331 ± 44	262 ± 29	142 ± 13	245 ± 21	144 ± 11
<b>CP</b>	241 ± 59	324 ± 32	314 ± 44	381 ± 25	77 ± 19	133 ± 33	116 ± 15	146 ± 19
<b>CA<sub>a</sub></b>	362 ± 38	177 ± 53	422 ± 47	261 ± 18	408 ± 20	149 ± 20	323 ± 31	161 ± 7
<b>Caf der</b>	96 ± 42	185 ± 31	140 ± 39	272 ± 27	213 ± 39	253 ± 61	216 ± 58	177 ± 20
<b>FP</b>	30 ± 4	28 ± 4	39 ± 3	37 ± 4	55 ± 4	94 ± 10	57 ± 12	80 ± 5
<b>Put CoHA</b>	72 ± 13	69 ± 4	73 ± 10	97 ± 15	80 ± 5	173 ± 15	86 ± 19	153 ± 9
<b>CA</b>	2565 ± 315	1403 ± 74	2993 ± 300	1753 ± 168	565 ± 39	518 ± 100	549 ± 32	569 ± 68
<b>Fer der</b>	60 ± 20	83 ± 12	94 ± 20	168 ± 17	115 ± 25	137 ± 22	124 ± 29	121 ± 12
<b>SG</b>	39 ± 5	40 ± 2	51 ± 9	48 ± 4	37 ± 2	32 ± 5	31 ± 2	33 ± 2
<b>CA<sub>b</sub></b>	99 ± 14	82 ± 16	81 ± 8	84 ± 9	36 ± 3	34 ± 4	36 ± 4	35 ± 5
<b>FQA</b>	95 ± 11	35 ± 2	118 ± 12	48 ± 7	3 ± 1	8 ± 3	2 ± 1	6 ± 1
<b>AR</b>	107 ± 14	55 ± 2	120 ± 15	57 ± 7	52 ± 3	11 ± 1	36 ± 3	11 ± 1
<b>R</b>	632 ± 70	260 ± 17	844 ± 102	348 ± 29	534 ± 46	409 ± 41	554 ± 32	426 ± 18
<b>CT</b>	12 ± 2	14 ± 5	17 ± 2	18 ± 3	35 ± 15	48 ± 15	64 ± 15	32 ± 12