



HAL
open science

Thermal Imaging of Thermoelectric 1D nanowires of Bi₂Te₃ using Scanning Thermal Microscopy

Gilles Pernot, Hadrien Chaynes, A D Danine, Nicolas Stein, David Lacroix

► **To cite this version:**

Gilles Pernot, Hadrien Chaynes, A D Danine, Nicolas Stein, David Lacroix. Thermal Imaging of Thermoelectric 1D nanowires of Bi₂Te₃ using Scanning Thermal Microscopy. *Nanoscale and Microscale Heat Transfer V*, Eurotherm Seminar No 108, Sep 2016, Santorini, Greece. . hal-01539222

HAL Id: hal-01539222

<https://hal.univ-lorraine.fr/hal-01539222>

Submitted on 14 Jun 2017

HAL is a multi-disciplinary open access archive for the deposit and dissemination of scientific research documents, whether they are published or not. The documents may come from teaching and research institutions in France or abroad, or from public or private research centers.

L'archive ouverte pluridisciplinaire **HAL**, est destinée au dépôt et à la diffusion de documents scientifiques de niveau recherche, publiés ou non, émanant des établissements d'enseignement et de recherche français ou étrangers, des laboratoires publics ou privés.



Distributed under a Creative Commons Attribution - NonCommercial - ShareAlike 4.0 International License

Thermal Imaging of Thermoelectric 1D nanowires of Bi_2Te_3 using Scanning Thermal Microscopy



G. Pernot¹, H. Chaynes¹, A. Danine², N. Stein² & D. Lacroix¹

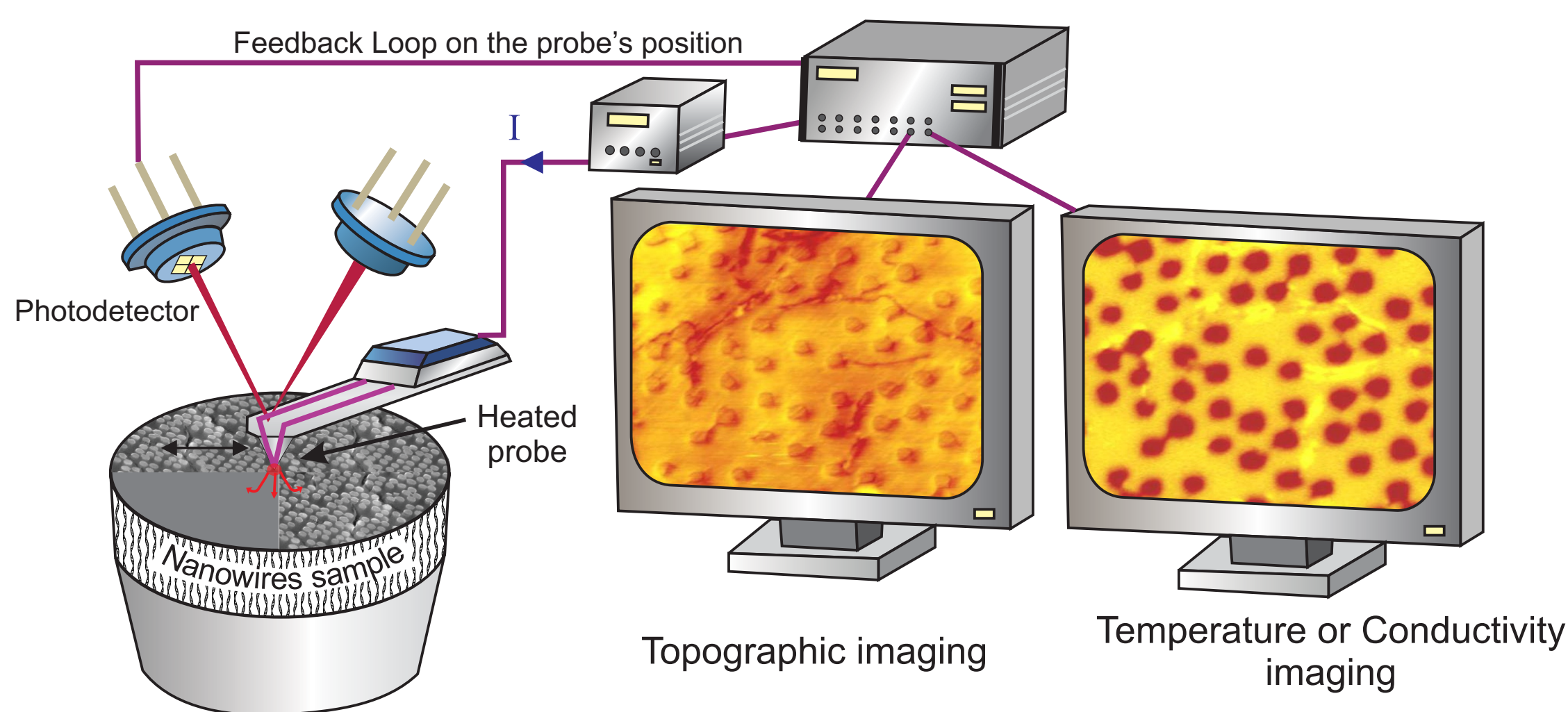


¹ Laboratoire d'Energétique et de Mécanique Théorique et Appliquée, UMR CNRS 7563, Université de Lorraine, 54518 Vandœuvre-lès-Nancy
² Institut Jean Lamour, UMR 7198, Université de Lorraine, 57078 Metz (France)



Introduction: Energy harvesting is certainly one of the most exciting challenge in modern physics. Theoretical calculations, material engineering and novel experimental characterization techniques have risen to fully explore the nanoscale limit and new materials with tailored properties. The purpose of this work is to present the current state-of-progress of the thermal metrology platform developed at LEMTA and more specifically the scanning thermal microscope (SThM). We applied this SThM technique to the study of thermoelectric-based Bi_2Te_3 nanowires.

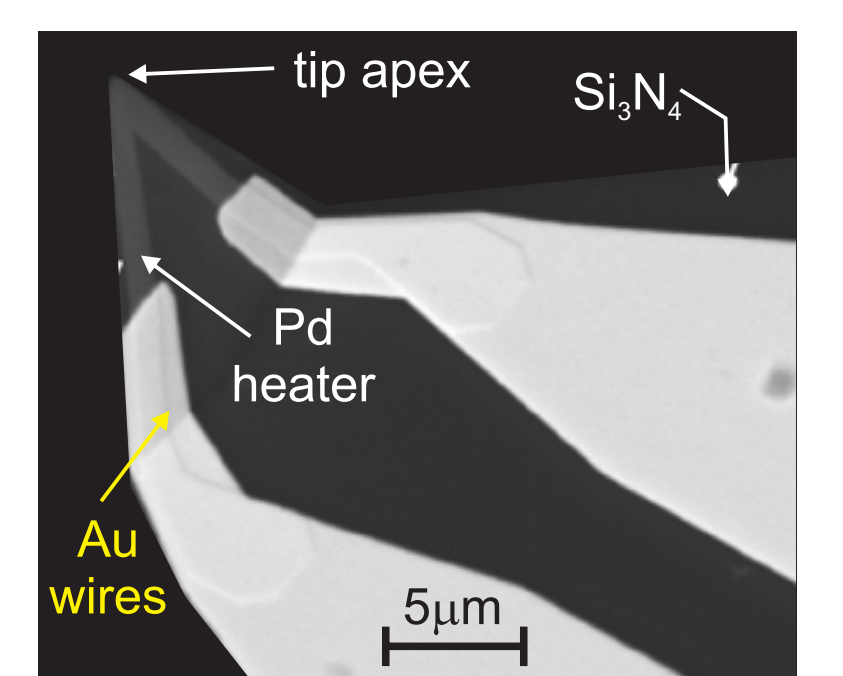
Scanning Thermal Microscopy principle



Principle

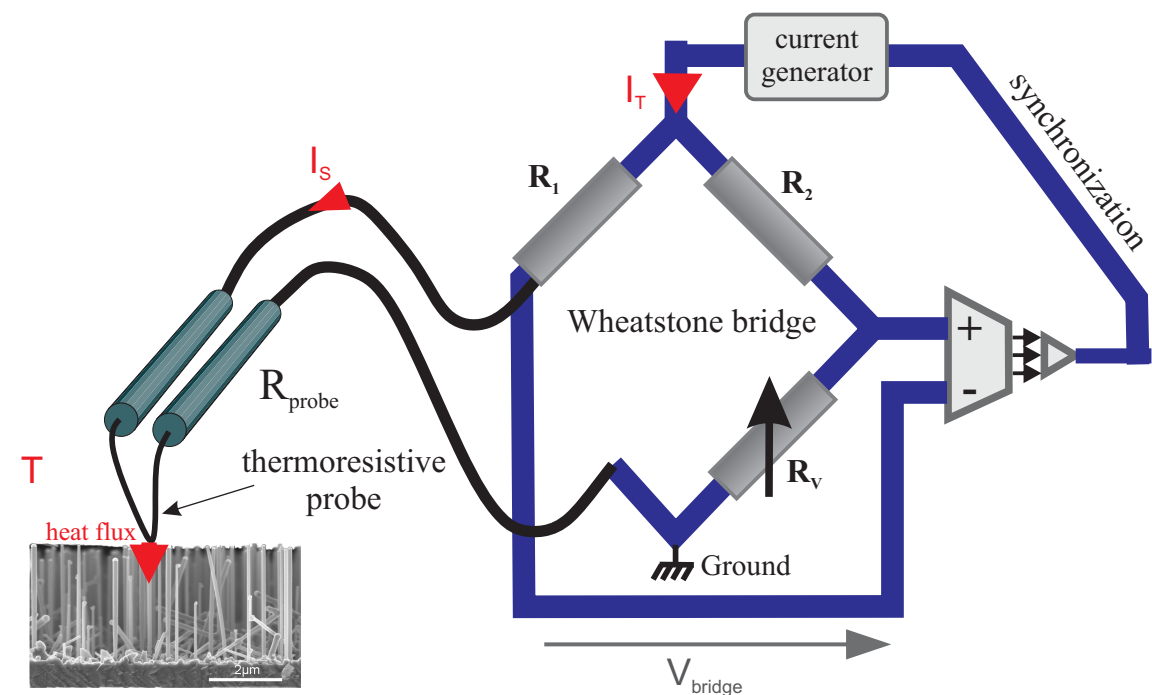
The nano-probe can be seen as an **electrical resistance** inside a Wheatstone bridge. When a current I is sent, **Joule effect** takes place and heats up the nano-probe. The knowledge in the variations of current sent in the probe are related to its temperature changes and thus to the heat transferred to the nano-objects.

Thermoresistive Probe



G. Wielgoszewski et al, Sensors and Actuators A: Physical 214 (2014)

Inside the SThM

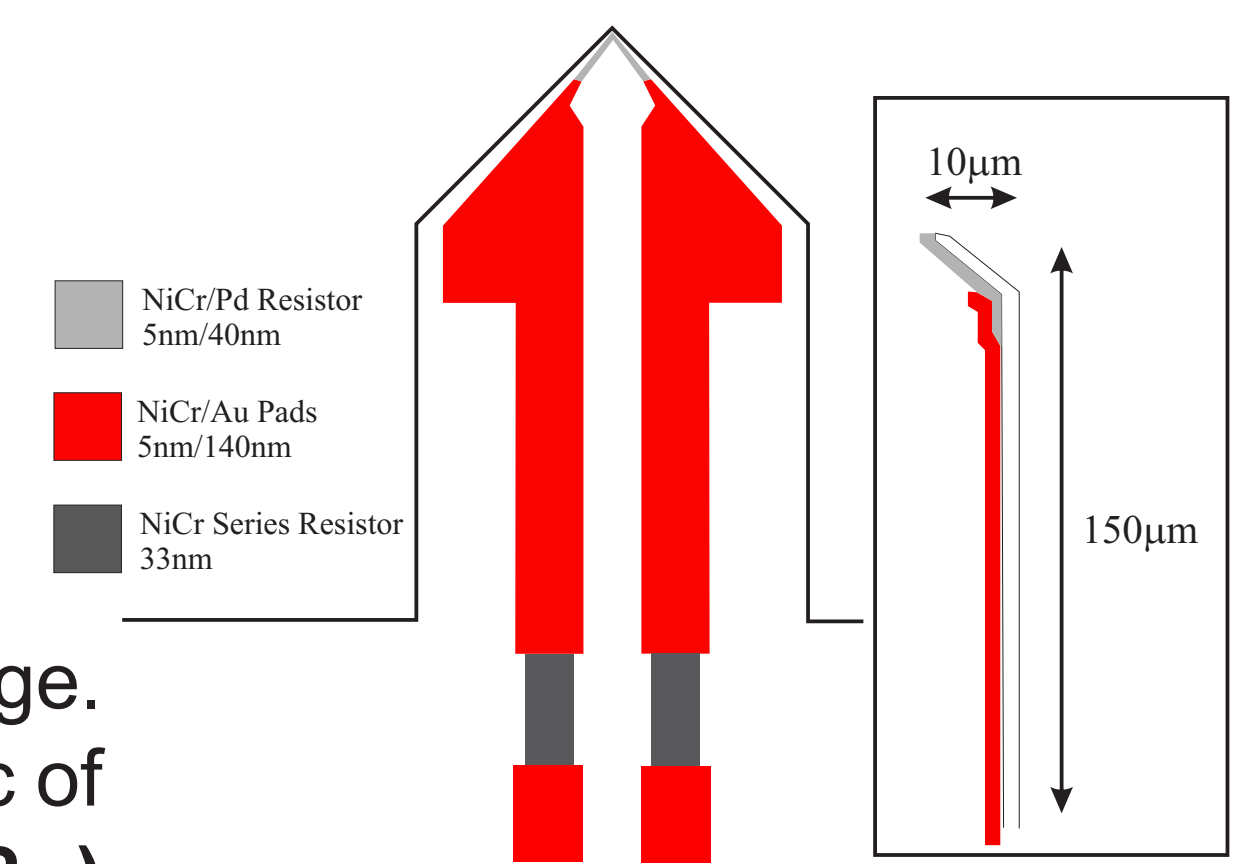


Temperature imaging mode

Probe is kept at a constant temperature by keeping $V_{\text{Bridge}} = \text{constant}$ inside a feedback loop. The changes in the current are monitored to create an image

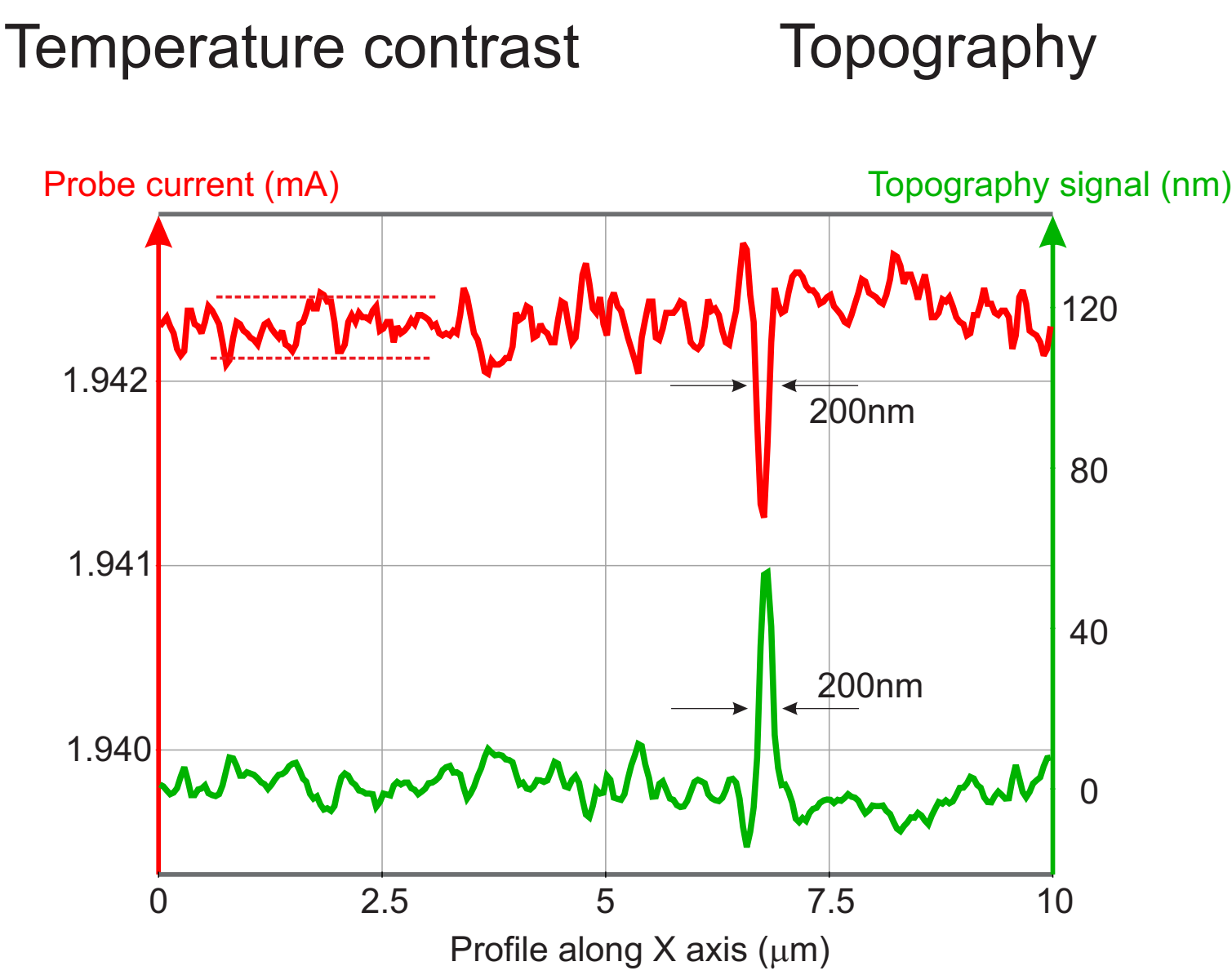
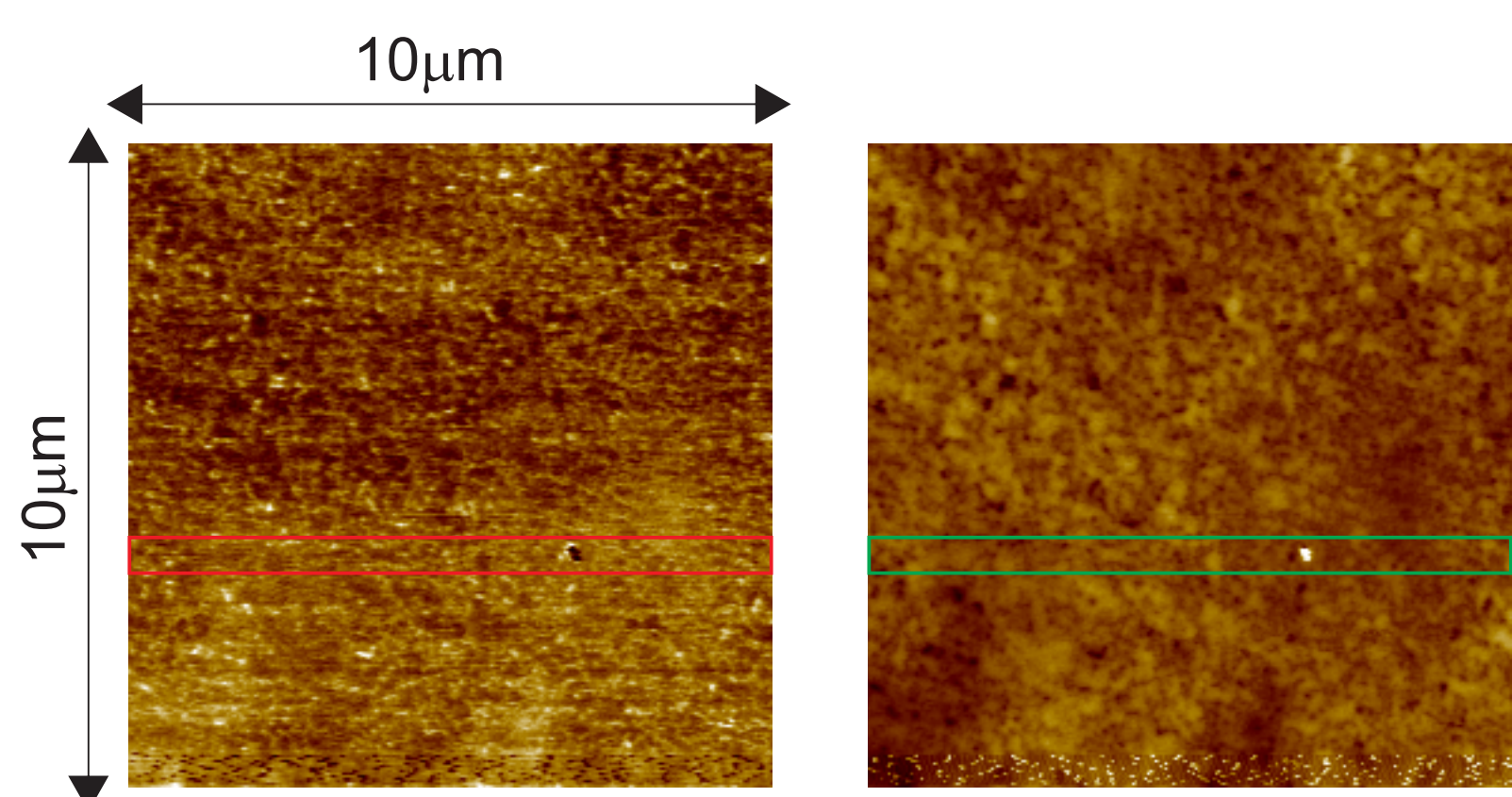
DC Conductivity imaging mode and 3- ω SThM

DC probe current is kept constant and the changes across the bridge are monitored to create an image. 3 ω -SThM relies on the same principle except that the probe current is a AC-current. The third harmonic of the voltage, filtered by a lock-in amplifier, is proportional to the probe temperature: $V(3\omega) \sim T(2\omega)$



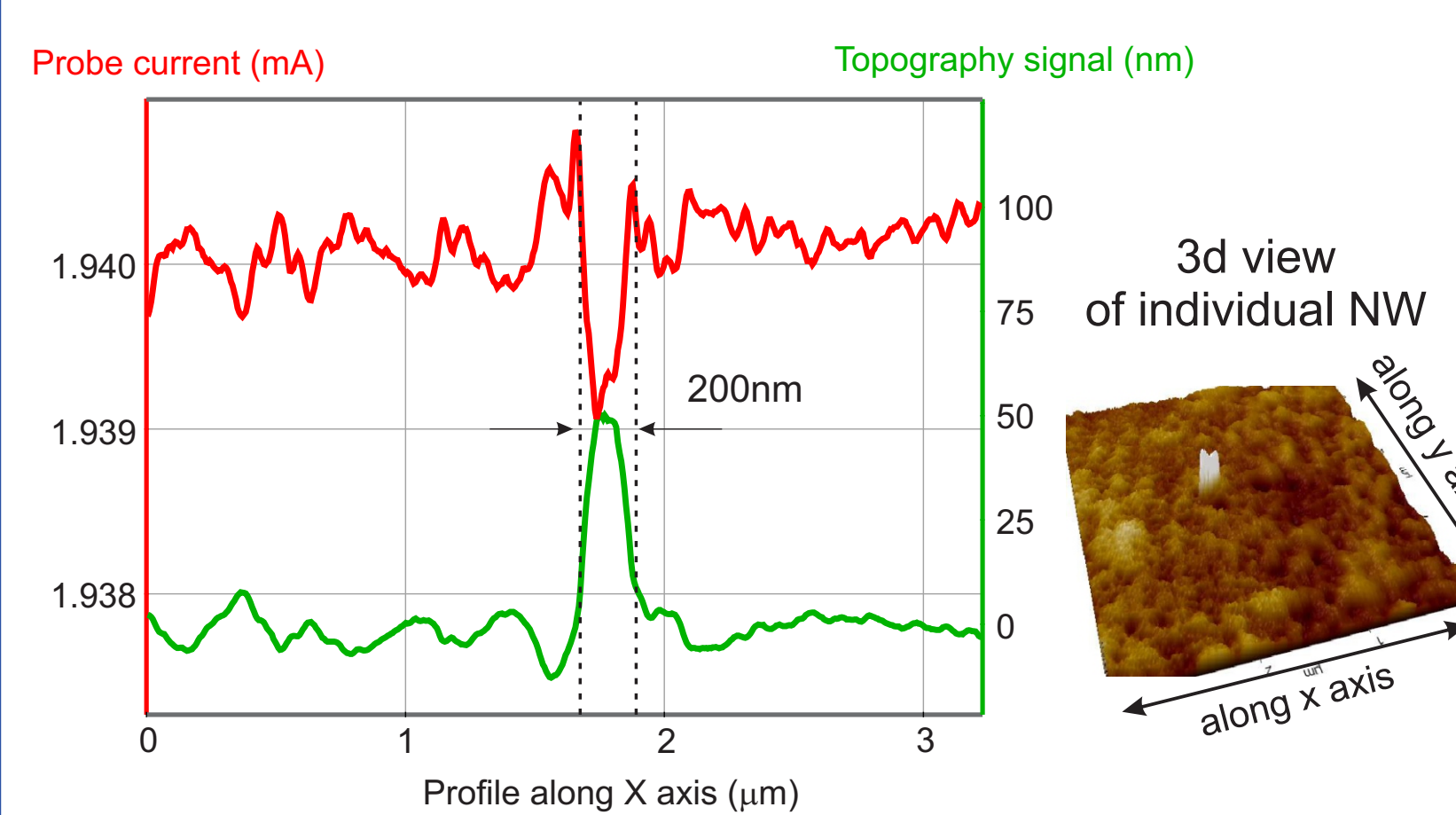
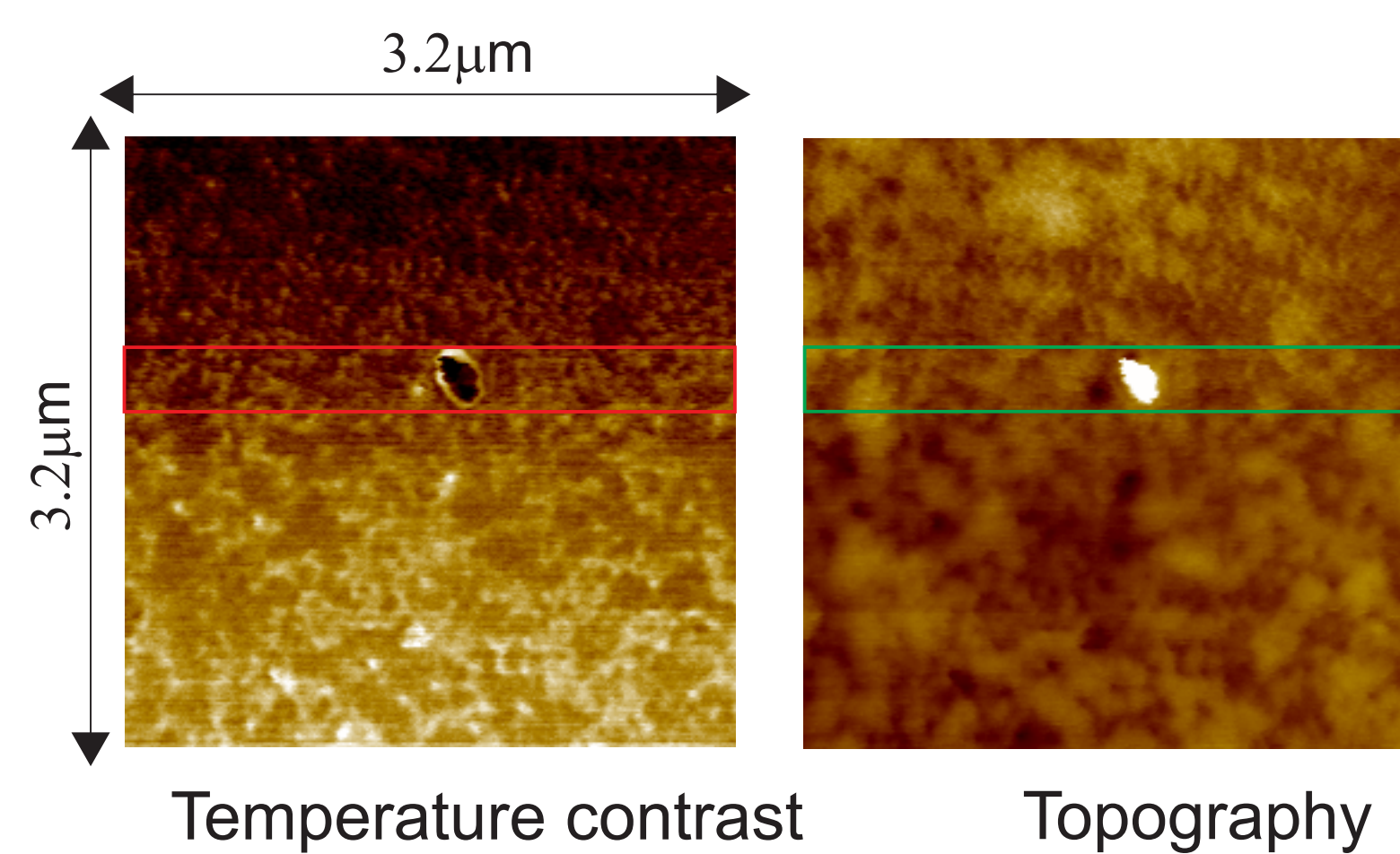
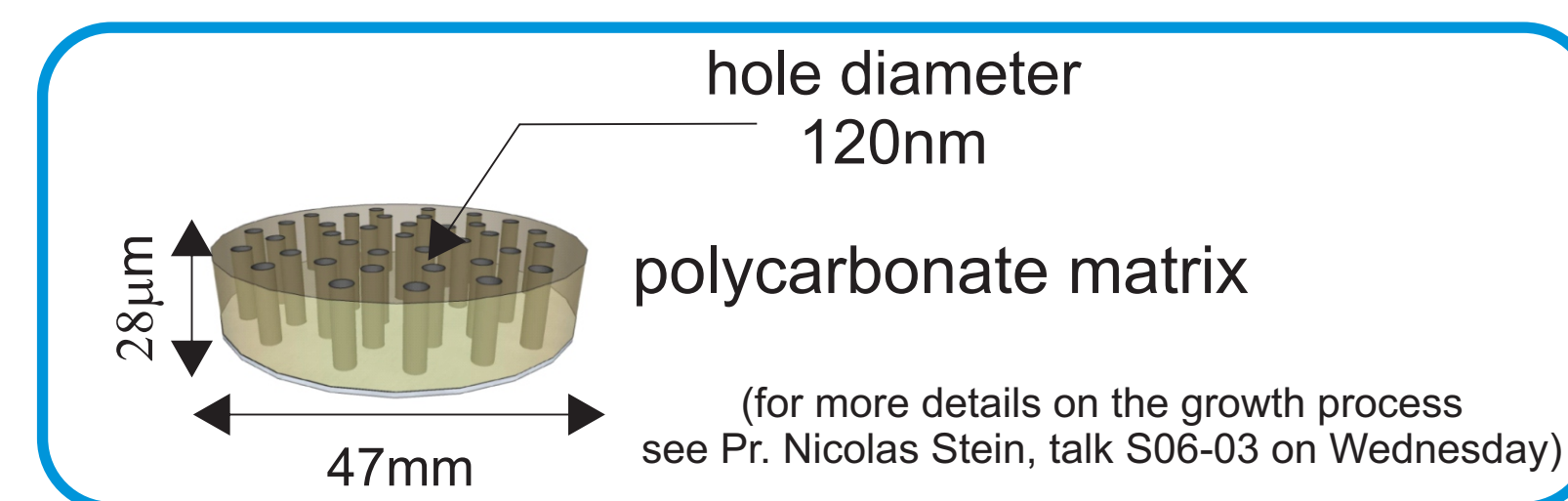
Imaging and thermal microscopy of nanowires

Electrochemically grown Bi_2Te_3 nanowires

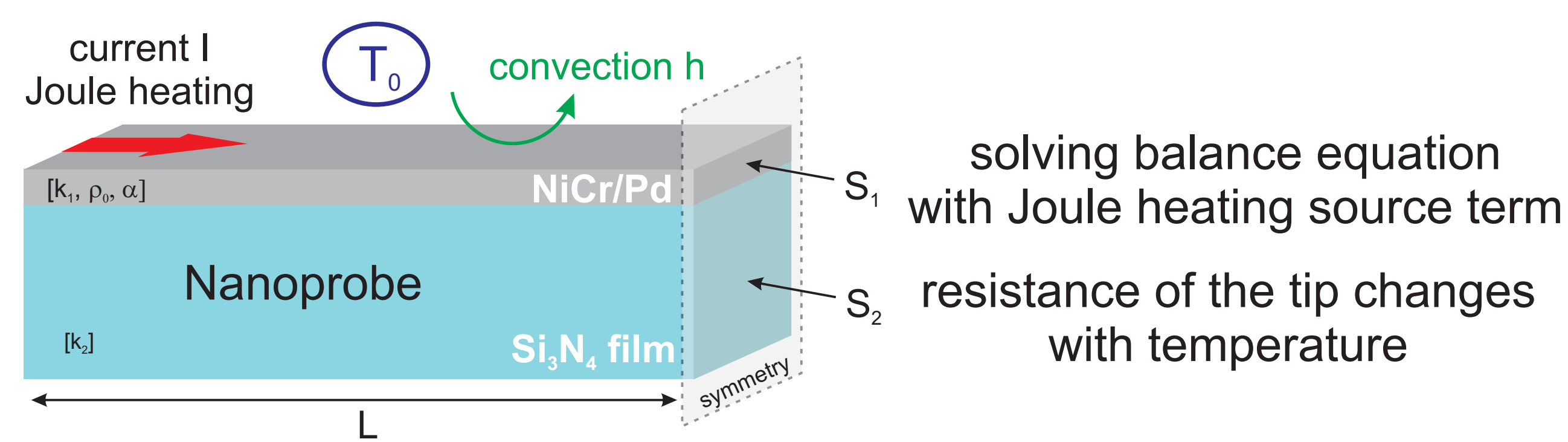


Probe current sensitivity contrast $\sim 0.3 \mu\text{A}$

Ratio = $\frac{\text{assumed conductivity NWs}}{\text{conductivity matrix}} \sim 5$



Modelling heat transfer between nanoprobe and environment



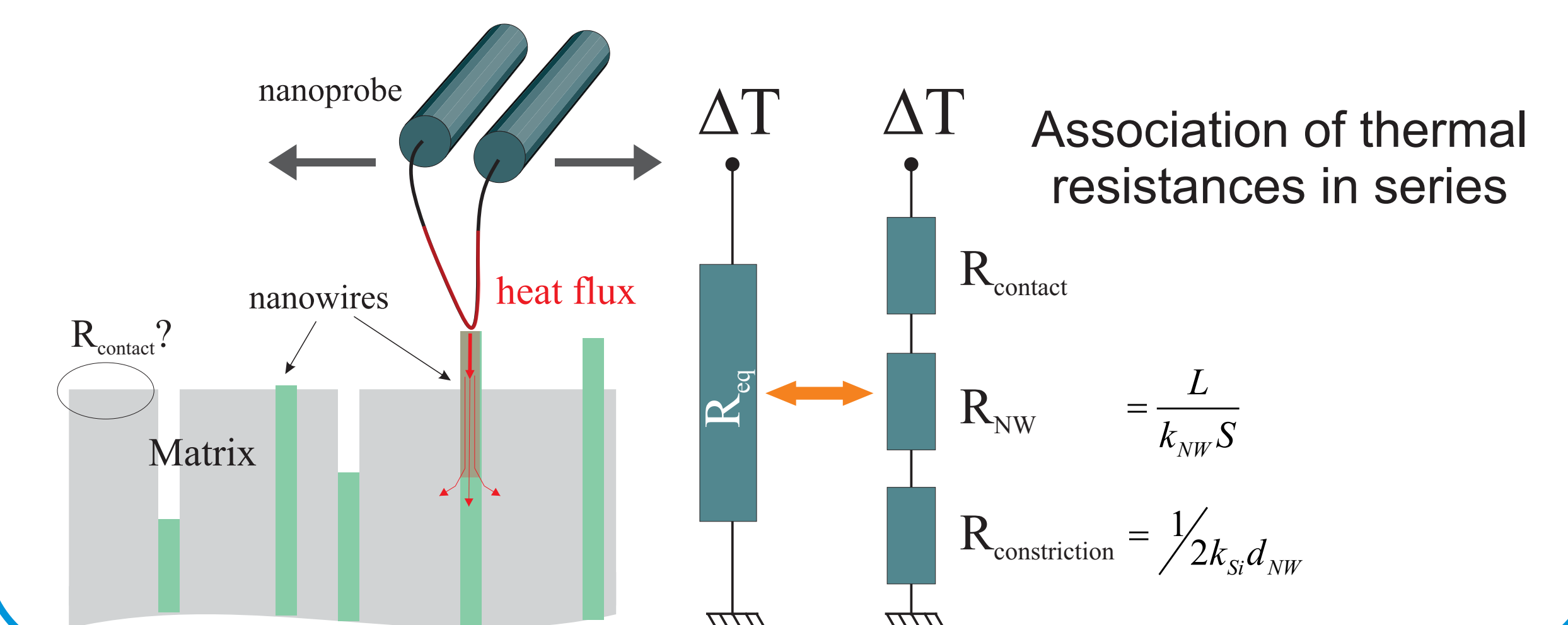
Out-of-contact Probe Temperature $\langle T_{\text{Probe}} \rangle = \frac{J}{m^2} \left[1 - \frac{\tanh(mL)}{mL} \right]$

Contact Probe Temperature $\langle T_{\text{Probe}} \rangle = \frac{J}{m^2} \left[1 - \frac{\sinh(mL)}{QmL} - 2 \frac{W}{QmL} (\cosh(mL) - 1) \right]$

with $J = \frac{\rho_0 I^2}{S_1 S_2 k_2} (1 + \alpha T_0)$, $m^2 = \frac{h p_2}{S_2 k_2} + \frac{\alpha \rho_0 I^2}{S_1 S_2 k_2}$, $Q = \cosh(mL) + \gamma \sinh(mL)$, $\gamma = (k_2 S_2 m R_{\text{sample}})^{-1}$

Modelling the contact with NWs

Puyoo et al, Scanning thermal microscopy of individual silicon nanowires, J. Appl. Phys. 109, 024302 (2011)



Association of thermal resistances in series

$R_{\text{NW}} = \frac{L}{k_{\text{NW}} S}$
 $R_{\text{constriction}} = \frac{1}{2 k_{\text{Si}} d_{\text{NW}}}$

Future improvements

3 ω -SThM

More sensitive than dc-method to energy transfer between tip and nano-objects. Better suited for thermal property metrology.

Controlled Environment

Install the SThM system in a vacuum chamber

Suppress artefacts like water meniscus between tip and sample, convection with external environment.

Conclusion: We have demonstrated the ability of SThM to perform images of individual Bi_2Te_3 nanowires.

Future improvements will allow to extract the thermal conductivity of individual NW.

This work is supported by CARNOT-ICEEL (AMBITION), Région Lorraine and Université de Lorraine.