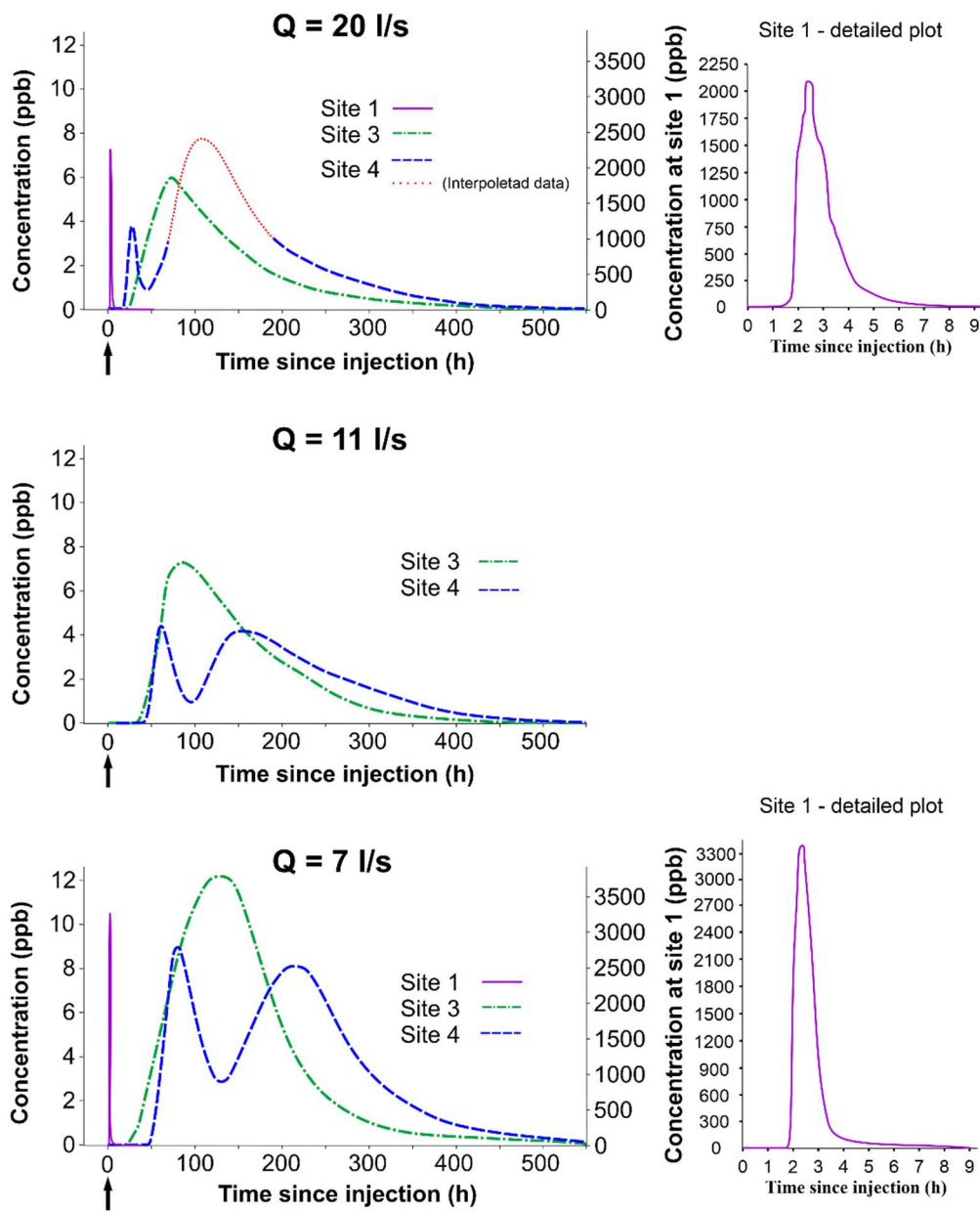


Correction: **Double-peaked breakthrough curves as a consequence of solute transport through underground lakes: a case study of the Furfooz karst system, Belgium**

There was an error in the fluorimeter data computing for tracer test 1 ( $Q = 20 \text{ l/s}$ ) at site 4. Indeed, due to a misinterpretation of the fluorimeter recording, some data should appear as interpolated. This interpolation was based, namely, on the comparison with other tracer test results. Figure 4 is now corrected with the interpolated data appearing as a red dotted line (first graph on top). In consequence, the recovery rate (39.9 %) calculated in table 1 is an estimation based on the interpolated data. A note has been added to table 1.



**Fig. 4** Breakthrough curves of three tracer tests performed in different discharge ( $Q$ ) conditions. The arrow below the X-axis shows the injection time. On the main plot (the left one), note the secondary Y-axis on the

right that gives concentration at site 1 only. On the right, detailed plots of site 1 are also given. The red dotted line on the top graph are interpolated data.

A second correction should be applied in table 1 and regard tracer test 3 ( $Q = 7\text{l/s}$ ). A typing error exists in the recovery rate, which is not 100 % but 34 %. However, it has to be mentioned that the recorded  $C_{\text{peak}}$  (3,367.8 ppb) exceeds the saturation level of the fluorimeter (3,000 ppb). Therefore, this value is indicative.

**Table 1** Main solute transport parameters from the BTCs analysis (injection at the swallow hole).  $1^{\text{st}}A.$ : first arrival;  $T_{\text{mean}}$ : mean travel time;  $V_{\text{max}}$ : maximum velocity;  $V_{\text{mean}}$ : mean velocity;  $C_{\text{peak}}$ : maximum peak concentration (in parts per billion);  $T_{\text{peak}}$ : time to the maximum peak concentration;  $R.R.$ : recovery rate; /: no data . \* this value was calculated on basis of interpolated data.

Tracer tests		1 <sup>st</sup> A. (h)	T <sub>mean</sub> (h)	V <sub>max</sub> (m/h)	V <sub>mean</sub> (m/h)	C <sub>peak</sub> (ppb)	T <sub>peak</sub> (h)	R.R. (%)
Tracer test 1 Q = 20 l/s	Site 1	1.5	3.1	100	45.5	2100	2.3	100
	Site 3	19.7	143.6	15.2	2.1	6.4	74.1	/
	Site 4 1 <sup>st</sup> peak	22.0	34.5	32.7	20.9	4.0	33.0	1.8
	Site 4 2 <sup>nd</sup> peak	48.2	174.9	14.9	4.1	8.0	112.0	39.9*
Tracer test 2 Q= 11 l/s	Site 3	36.4	148.3	8.2	2.0	7.37	82.9	/
	Site 4 1 <sup>st</sup> peak	38.7	68.2	19.9	11.3	4.40	61.0	2.4
	Site 4 2 <sup>nd</sup> peak	85.0	219.1	8.4	3.5	4.20	153.7	12.9
Tracer test 3 Q = 7 l/s	Site 1	1.9	3.8	78.9	38.6	3367.8	2.4	34
	Site 3	30.0	157.8	10.3	2.0	12.7	125.8	/
	Site 4 1 <sup>st</sup> peak	40.3	86.8	19.1	8.9	9.5	78.2	5.5
	Site 4 2 <sup>nd</sup> peak	129.3	270.1	5.9	2.8	8.5	214.9	18.3