



**HAL**  
open science

# Chromosomal arm replacement generates a high level of intraspecific polymorphism in the terminal inverted repeats of the linear chromosomal DNA of *Streptomyces ambofaciens*

Gilles Fischer, Thomas Wenner, Bernard Decaris, Pierre Leblond

## ► To cite this version:

Gilles Fischer, Thomas Wenner, Bernard Decaris, Pierre Leblond. Chromosomal arm replacement generates a high level of intraspecific polymorphism in the terminal inverted repeats of the linear chromosomal DNA of *Streptomyces ambofaciens*. *Proceedings of the National Academy of Sciences of the United States of America*, 1998, 7 (6), pp.14296-301. 10.1073/pnas.95.24.14296 . hal-01625341

**HAL Id: hal-01625341**

**<https://hal.univ-lorraine.fr/hal-01625341v1>**

Submitted on 7 Nov 2017

**HAL** is a multi-disciplinary open access archive for the deposit and dissemination of scientific research documents, whether they are published or not. The documents may come from teaching and research institutions in France or abroad, or from public or private research centers.

L'archive ouverte pluridisciplinaire **HAL**, est destinée au dépôt et à la diffusion de documents scientifiques de niveau recherche, publiés ou non, émanant des établissements d'enseignement et de recherche français ou étrangers, des laboratoires publics ou privés.

# Chromosomal arm replacement generates a high level of intraspecific polymorphism in the terminal inverted repeats of the linear chromosomal DNA of *Streptomyces ambofaciens*

GILLES FISCHER, THOMAS WENNER, BERNARD DECARIS, AND PIERRE LEBLOND\*

Laboratoire de Génétique et Microbiologie, Unité associée INRA 952, Université Henri Poincaré-Nancy 1, Faculté des Sciences, Boulevard des Aiguillettes, F-54506 Vandoeuvre-lès-Nancy, France

Communicated by John R. Roth, University of Utah, Salt Lake City, UT, September 28, 1998 (received for review May 13, 1998)

**ABSTRACT** The chromosomal DNA of the bacteria *Streptomyces ambofaciens* DSM40697 is an 8-Mb linear molecule that ends in terminal inverted repeats (TIRs) of 210 kb. The sequences of the TIRs are highly variable between the different linear replicons of *Streptomyces* (plasmids or chromosomes). Two spontaneous mutant strains harboring TIRs of 480 and 850 kb were isolated. The TIR polymorphism seen is a result of the deletion of one chromosomal end and its replacement by 480 or 850 kb of sequence identical to the end of the undeleted chromosomal arm. Analysis of the wild-type sequences involved in these rearrangements revealed that a recombination event took place between the two copies of a duplicated DNA sequence. Each copy was mapped to one chromosomal arm, outside of the TIR, and encoded a putative alternative sigma factor. The two ORFs, designated *hasR* and *hasL*, were found to be 99% similar at the nucleotide level. The sequence of the chimeric regions generated by the recombination showed that the chromosomal structure of the mutant strains resulted from homologous recombination events between the two copies. We suggest that this mechanism of chromosomal arm replacement contributes to the rapid evolutionary diversification of the sequences of the TIR in *Streptomyces*.

The chromosomal DNA as well as numerous plasmids are linear in the genus *Streptomyces* (1–5). They belong to the class of genetic elements called invertrons, which are characterized by terminal inverted repeats (TIRs) and a protein covalently attached to their 5' ends (6). The length of the TIR is highly variable, from 44 bp (SLP2 of *S. lividans* 66) to 180 kb (pPZG101 of *S. rimosus*) for the plasmids (7, 8) and from 24 kb (*S. griseus*) to 550 kb (*S. rimosus*) for chromosomes (3, 5).

Comparisons of the TIR sequences between different *Streptomyces* linear replicons revealed similarities only between the last few tens of bases. This area of similarity represents a very small fraction of the whole length of the repeated sequences (7, 9–11) and is rich in palindromic sequences that are involved in the priming of the 5'-terminal DNA segment of the lagging strand (12–14).

The discrepancy in the size of the TIRs is accompanied by a high level of sequence polymorphism between the terminal duplications of the different replicons. Therefore, despite a very close phylogenetic relationship (15, 16) and a highly conserved gene order among the *S. coelicolor* A3(2), *S. lividans* 66, and *S. ambofaciens* DSM40697 chromosomes (4, 17), there is no significant cross-hybridization of their TIR (18, 19). These data showed that the sequences at the ends of the

chromosome are subject to a different evolution mechanism compared with the rest of the chromosome.

The chromosomal ends of *Streptomyces* are subject to a particularly high degree of genetic instability. Large-scale deletions and DNA sequence amplifications are intimately associated with a high frequency ( $>10^{-3}$ ) of spontaneous mutations. The deletable region corresponds to the chromosomal ends, and the deletions affect either one or both chromosomal arms. The amplifications most often are adjacent to a deletion termini (recently reviewed in refs. 20 and 21).

Here, we describe a new type of chromosomal rearrangement that results from a homologous recombination event and leads to a homogenization of the terminal sequences. This event, together with the reports of sequence exchanges between linear plasmids and chromosomes in *Streptomyces* (1, 7, 8), suggested to us a mechanism to account for the rapid evolution of the TIRs.

## MATERIALS AND METHODS

**Bacterial Strains and Culture Conditions.** *Escherichia coli* Sure (Stratagene) was cultured in Luria–Bertani medium and used as host strain for genomic libraries construction. *E. coli* JM101 and its derivative *E. coli* JM109 (Stratagene) were used as a recipient for electroporation and propagation of the M13 mp18 derivatives. Both were grown in 2xYT liquid medium (22) and poured as a top layer in Soft-Agar (SA) onto Hard-Agar (HA) plates (22).

*S. ambofaciens* was cultured in YEME medium (23) for pulsed-field gel electrophoresis (PFGE) DNA preparation or in Hickey–Tresner medium for classical DNA extraction.

**DNA Manipulations, Reagents, and Enzymes.** Extraction of total DNA from *S. ambofaciens* for gene libraries preparation, extraction of high-molecular-weight genomic DNA, endonuclease cleaving in agarose blocks, and separation of the DNA fragments by PFGE were as reported previously (4). Restriction enzymes and molecular biology reagents were purchased from New England Biolabs and Boehringer Mannheim.

Restriction fragments were purified from agarose gels by using the GeneClean procedure (Bio 101).

DNA was labeled with digoxigenin-labeled dUTP, and hybrids were detected by using the Dig DNA labeling and detection kit (Boehringer Mannheim).

Gene libraries of mutant strains of *S. ambofaciens* were constructed from a *Bam*HI partial digest of the total DNA in

The publication costs of this article were defrayed in part by page charge payment. This article must therefore be hereby marked "advertisement" in accordance with 18 U.S.C. §1734 solely to indicate this fact.

© 1998 by The National Academy of Sciences 0027-8424/98/9514296-6\$2.00/0  
PNAS is available online at www.pnas.org.

Abbreviations: *has*, homologous to alternative sigma factor; PFGE, pulsed-field gel electrophoresis; TIR, terminal inverted repeat; wt, wild type.

Data deposition: The sequences reported in this paper have been deposited in the GenBank database (accession nos. AF050150 and AF050151).

\*To whom reprint requests should be addressed. e-mail: leblond@nancy.inra.fr.

Supercos1 (24), according to the recommendation of the supplier of the Gigapack III gold encapsidation kit (Stratagene). The wild-type (wt) library was constructed previously (25).

Cosmid DNA, and double-stranded or single-stranded bacteriophage M13 derivative DNA were isolated as reported (22).

**DNA Sequencing and Sequence Analysis.** Restriction fragments from the sequenced regions were subcloned in the vector M13 mp18 (Sigma) (26). The dideoxy chain-termination sequencing method was performed on single-stranded or double-stranded DNA derived from the vector M13 mp18. The Sequenase 2.0 kit (United States Biochemical) was used with both dGTP or its analog, dITP, during the elongation step or the Taqtrack sequencing system (Promega) with the nucleotide analog 7-deaza-dGTP instead of dGTP in the reaction mixes. DNA fragments were radioactively labeled with [<sup>35</sup>S]dATP (NEN). The oligonucleotides used as primers were M13 forward, M13 reverse (Sigma), and an internal region of the ORFs 5'-CAGGGAGGCGGAGTTGT-3'. The BLAST 2.0 network service (27) and DNA or protein sequences from the EMBL, GenBank, PIR, and SWISSPROT databases were used to detect similarities between DNA sequences or potential protein encoded by these DNA sequences. The SEQUP program was used to perform alignment of the DNA sequences corresponding to the *hasR* and *hasL* regions.

## RESULTS

### Chromosomal Arm Replacement in Strain NSA135HPP.

This strain, more properly, its ancestor, NSA135H (28), was isolated previously from genetic instability of *S. ambifaciens* as a mutant affected in colony morphology. Its chromosomal structure results from the deletion of 850 kb of the right chromosomal end (left and right are according to the map orientation on Fig. 1) and its replacement by 480 kb of

sequences identical to the left end, the latter remaining unaffected by the rearrangement (Fig. 1). Thus, in the *AseI* PFGE pattern of the total DNA of this strain, fragments E (850 kb) and G (480 kb, right chromosomal end in the wt strain) were missing and a new *AseI* fragment of 960 kb (called NA1 for New *AseI* fragment 1 on Figs. 1 and 2A) was detected. This fragment, as well as the left-terminal *AseI*-D fragment of 950 kb, was covalently bound to a protein, as it did not enter a PFGE gel when the proteinase treatment was omitted of the DNA preparation (1, 4) (Fig. 2A). In addition, both fragments were revealed by cosmid AD91, flanking the ends of the TIR in the wt strain (4) (Figs. 1 and 2A). Therefore, the NA1 fragment corresponded to the right extremity of the linear chromosomal DNA of this strain (Fig. 1).

This fragment resulted from the fusion between the undetected part of *AseI*-E and the duplicated part of *AseI*-D. This was shown by the hybridization of both cosmids 32E1 (from fragment *AseI*-E in the wt strain, Fig. 1) and 12A5 (between fragments *DraI*-VI and VII, Fig. 1) DNA onto NA1 (Fig. 2A).

As further evidence, the *DraI* restriction pattern of this strain was in agreement with the results presented above with *AseI*. Thus, *DraI*-IV fragment (right end in the wt chromosome) was the only missing fragment, and the intensity of the DNA band corresponding to the *DraI*-VII fragment (left chromosomal end) was compatible with a doublet (Fig. 2B). However, it was not possible to distinguish between the *DraI*-I fragment of 2,100 kb in the wt strain and the new *DraI* fragment (called ND1 for new *DraI* fragment 1) generated by this rearrangement, the size of which was estimated to be approximately 2,060 kb (Figs. 1 and 2B).

By hybridizing ordered overlapping cosmids corresponding to the *AseI*-E fragment onto *Bam*HI patterns of total DNA of strain NSA135HPP, the deletion terminus was localized in cosmid 25E1 (Fig. 1). The extent of the deletion was estimated to be approximately 850 kb by adding together the sizes of the *Bam*HI fragments of ordered overlapping cosmids from the unstable region of *S. ambifaciens* DSM40697.

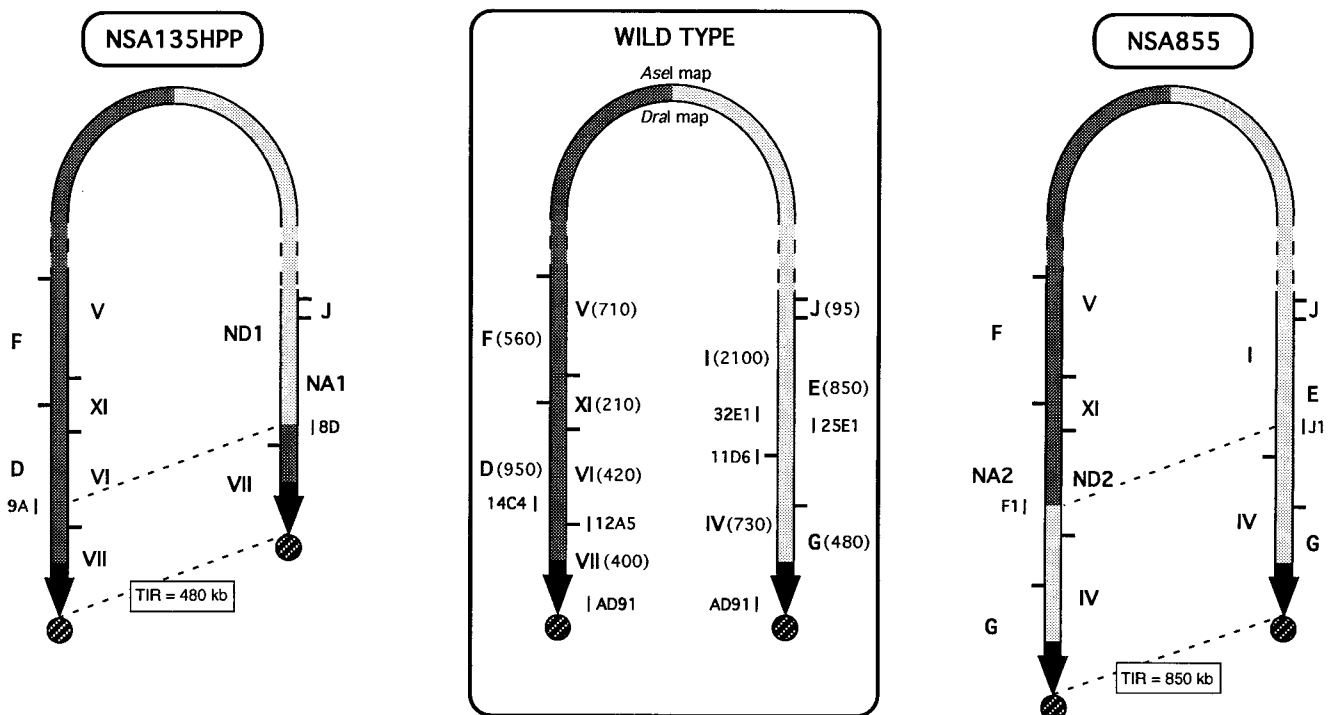


FIG. 1. Chromosomal arm replacement in strains NSA135HPP and NSA855. The *AseI* and *DraI* restriction maps of the unstable region of the wt strain DSM40697 are presented in the middle of the figure. The size of the restriction fragments, in kilobases, is given in brackets. Sequences from the left chromosomal arm are symbolized in dark gray while those from the right arm are in light gray. The 210-kb TIRs of the wt strain appear as black arrows and the terminal proteins appear as circles. The location of the cosmids is indicated by short, vertical bars. The new TIR size in the mutants is delimited by dotted lines.

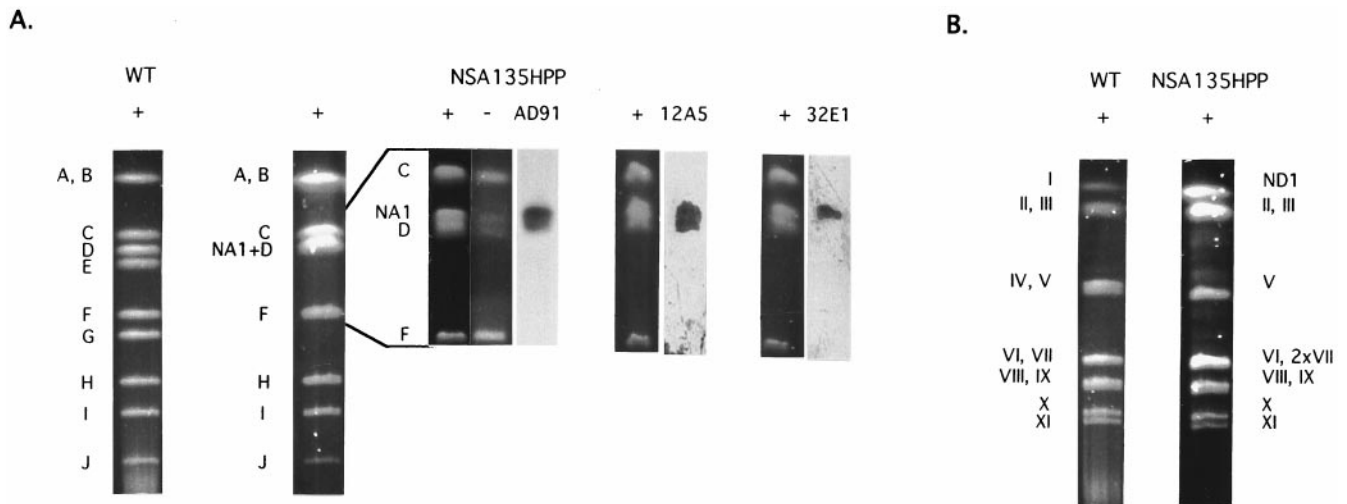


FIG. 2. (A) *AseI* restriction patterns of genomic DNA from *S. ambifaciens* DSM40697 (WT) and NSA135HPP. Running conditions were: 1% agarose gel, 200 V for 24 h with a ramped pulse time of from 20 to 150 sec for the whole patterns, and 0.9% agarose gel, 200 V for 40 h with a ramped pulse time of from 80 to 100 sec for the specific separation of the NA1 fragment (960 kb) and *AseI*-D (950 kb). Fragments were lettered according to the chromosome map (4). NA1 indicates the localization of the new *AseI* fragment; + and - represent pronase-treated and pronase-untreated samples of DNA, respectively. AD91, 12A5, and 32E1 indicate Southern blots of the pronase-treated lanes probed with the respective labeled cosmid DNA. (B) *DraI* restriction patterns of genomic DNA from *S. ambifaciens* DSM40697 (WT) and NSA135HPP. Running conditions were: 1% agarose gel, 200 V for 24 h with a ramped pulse time of from 20 to 150 sec. The high-molecular-weight fragments were slightly degraded in the wt genomic DNA. ND1 indicates the localization of the new *DraI* fragment in NSA135HPP; the faint additional bands in the pattern are a result of partial digests.

The junction between the deletion terminus and the duplicated DNA was isolated in cosmid 8D (Fig. 1) from a gene library of the strain NSA135HPP. The region of the left chromosomal arm, corresponding to the boundary of the DNA segment duplicated on the right arm, similarly was isolated in cosmid 9A (Fig. 1). The *Bam*HI map of these loci was constructed by ordering overlapping cosmids from the gene library and was compared with the map of the corresponding regions in the wt strain. The DNA rearrangement involved a single *Bam*HI fragment on each chromosomal arm (14.2 kb from cosmid 25E1 and 17.5 kb from cosmid 14C4) to give a fusion *Bam*HI fragment of 19.5 kb in cosmid 8D. No other change in the *Bam*HI map was detected on either side of the junction nor on the unduplicated arm (region of cosmid 9A).

**Chromosomal Arm Replacement in Strain NSA855.** This strain was subcloned from the phenotypically heterogeneous progeny of the pigment-defective mutant NSA854, which arose from genetic instability of the wt strain (28).

Conversely to the chromosomal structure of NSA135HPP, in strain NSA855, the left chromosomal arm is deleted for terminal 480 kb while 850 kb of the right end (corresponding to the deleted area in NSA135HPP) was duplicated and fused to the deletion terminus on the left arm (Fig. 1). Thus, the *AseI* restriction pattern showed that the *AseI*-D fragment (left end) was the only missing band while a new *AseI* fragment of approximately 860 kb, NA2, was detected (Figs. 1 and 3A). In addition, the intensity of the band corresponding to the *AseI*-G fragment (right end) was compatible with a doublet. This was also the only band of the pattern that remained trapped in the well in the proteinase-untreated assays and that hybridized with the wt terminal sequences (AD91 cosmid DNA, Fig. 3A). So, the *AseI*-G fragment was duplicated and lay at both chromosomal ends (Fig. 1).

This structure was confirmed by the analysis of the *DraI* pattern. Fragments VI (420 kb) and VII (400 kb) were missing, and a new fragment of 450 kb was detected (ND2 in Fig. 3B). The terminal *DraI*-IV fragment showed double intensity compared with the wt pattern, as described above for the terminal *AseI*-G fragment. The hybridization with the *DraI* linking clone 11D6 (between fragments IV and I in the wt strain, Fig. 1) revealed the ND2 fragment (Fig. 3B), demonstrating that

sequences from the right chromosomal arm were duplicated on the left chromosomal arm.

Using as probes ordered cosmids overlapping the *AseI*-D fragment, the deletion terminus was localized in cosmid 14C4 (Fig. 1). The junction of the rearrangement was isolated by using a gene library of strain NSA855 in a *Bam*HI fragment of 11.9 kb cloned in cosmid F1 (Fig. 1). This fragment was homologous to both *Bam*HI fragments of 17.5 kb of cosmid 14C4 and 14.2 kb of cosmid 25E1. Therefore, the chromosomal rearrangement characterized in strain NSA855 involved the same *Bam*HI fragments as in NSA135HPP. No other difference was detected on either chromosomal arm when compared with the corresponding wt *Bam*HI map.

**A Duplicated Gene as a Substrate for Homologous Recombination.** To permit a more precise characterization of the rearrangements and to elucidate the mechanism of the chromosomal arm replacement, the nucleotide sequence of the duplication-deletion junctions was determined in both mutant strains and compared with the corresponding wt regions.

A total of 1,180 and 1,115 nt were sequenced from the wt regions surrounding the deletion termini on the right and left chromosomal arm, respectively. An ORF was identified on each arm by using the program FRAMEPLOT 2.1 (29). The two DNA-coding sequences contained a G+C percentage of 69 and were 99% similar to each other. The deduced protein sequences also showed 99% identity (Fig. 4). Database searches using the BLAST 2.0 service (27) showed that they presented 64% of identity with the product of the gene *crtS*, a  $\sigma$  factor necessary for carotenoid biosynthesis in *S. setonii* (30). High similarities (47%) also were found with the products of the gene *sigF*, which controls the late steps of sporulation in *S. coelicolor* or *S. aureofaciens* (31). The similarities are particularly striking within the regions 2.4 (100% with *crtS* and 73% with *sigF*) and within the region 4.2 (62.5% with *crtS* and *sigF*), which are involved in the recognition of the -10 and -35 regions of promoters of the genes, respectively (32) (Fig. 4). So, these ORFs were designated homologous to alternative sigma factor (*has*) and R and L for right and left chromosomal arm, respectively.

The ORFs, *hasR* and *hasL*, differ only by 1 nt in the 5' and 5 nt in the 3' coding regions (Fig. 4). These nucleotide



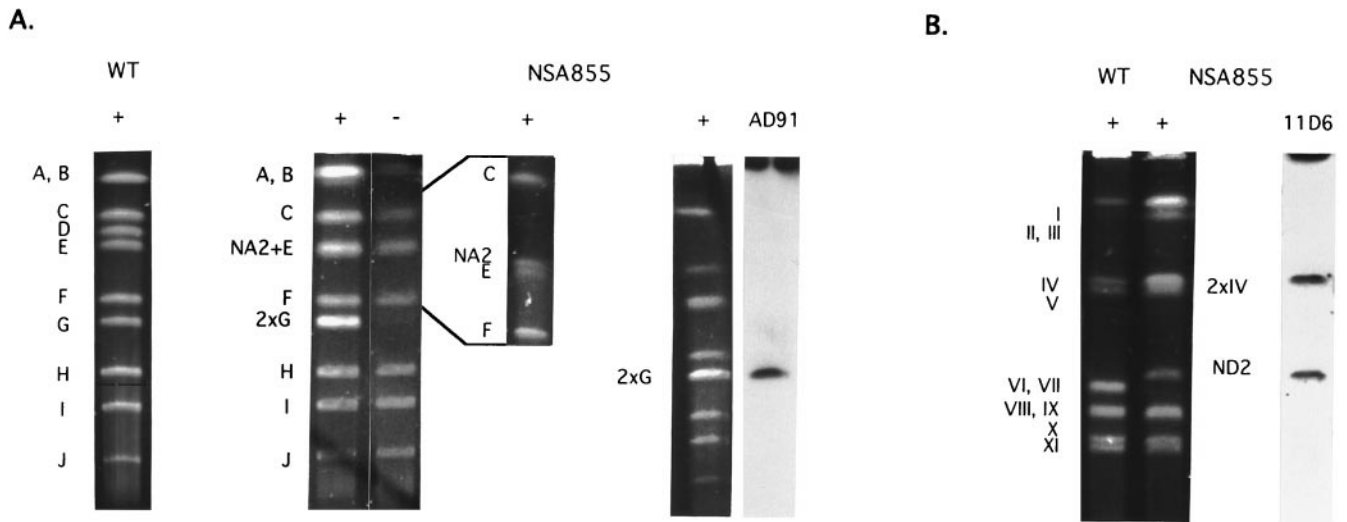


FIG. 3. (A) *AseI* restriction patterns of genomic DNA from *S. ambofaciens* DSM40697 (WT) and NSA855. Running conditions were: 1% agarose gel, 200 V for 24 h with a ramped pulse time of from 20 to 130 sec for the first three lanes; 0.9% agarose gel, 200 V for 40 h with a ramped pulse time of from 80 to 100 sec for the specific separation of the NA2 fragment (860 kb) and *AseI*-E (850 kb); and, finally, 1% agarose gel, 200 V for 24 h with a ramped pulse time of from 40 to 160 sec for the last lane. Symbols +, -, and AD91 are as described in Fig. 2. The large fragments in the pronase-untreated lane are slightly degraded. (B) *DraI* restriction patterns of genomic DNA of *S. ambofaciens* DSM40697 (WT) and NSA855. Running conditions were: 1% agarose gel, 200 V for 23 h with a ramped pulse time of from 40 to 90 sec. 11D6 indicates Southern blots of the NSA855 pattern probed with labeled 11D6 cosmid DNA. The absence of a hybridization signal on the *DraI*-I fragment (2,100 kb) is explained by the fact that most of the very large fragments were not transferred to the membrane.

differences correspond to nonconservative substitutions as 4 aa differed between the two putative products (Fig. 4). There are 5 potential translation initiation codons (ATG or GTG) at positions 1, 10, 46, 55, and 73. The localization of a potential ribosome-binding site (RBS), GGAGG, 10 bp upstream of the first putative ATG codon supports its functionality, as the distance from the initiation codon ranges from 5 to 12 bp in *Streptomyces* (33). However, the most downstream GTG codon (position 73) could also be used as the translation initiation codon as there is a sequence 10 bp upstream (GGA) that could also act as an RBS. The ORF terminated at a TGA codon at position 846, encoding a putative 281- or 257-residue polypep-

tide depending on the position of the start codon used. The transcriptional orientation of the duplicated genes *hasR* and *hasL* is divergent from the ends of the chromosome (Fig. 5).

No sequence similarity was detected between the 3' regions of *hasR* and *hasL* (139 nt downstream from the stop codon TGA were compared). In the 5' regions, 130 nt upstream from the ATG start codon were aligned. The similarities detected are limited to the area of the RBS.

In strain NSA135HPP, the chimeric region was sequenced (1,073 nt) and compared with the wt sequences. The hybrid ORF, called *has135*, is identical to *hasL* in the 5' coding region (Gly-7, Fig. 4) and to *hasR* in the coding terminus region (Thr-279, Asp-280, and His-281, Fig. 4). The 127 nt from the 3' region of *has135* (i.e., the region proximal to the middle of the chromosome) also were identical to the corresponding region of *hasR*. However, the 100 nt in the 5' region of *has135* (i.e., on the side of the chromosomal ends) were completely identical to the 5' region of *hasL*. This demonstrates that the chromosomal arm replacement in strain NSA135HPP resulted from homologous recombination between the identical parts of *hasR* and *hasL*.

The reciprocal situation was found in strain NSA855. A total of 1,312 nt were sequenced on the left chromosomal arm, at the deletion-duplication junction. The hybrid ORF characterized at this point (*has855*) was identical to *hasR* in the 5' part of the gene and to *hasL* in the 3' part. The 383 nt of the 3' region downstream to *has855* were identical to the 3' part of *hasL* (Fig. 5). However, the 5' region of *has855* presented the same sequence as the corresponding region of *hasR* (87 nt compared).

## DISCUSSION

The linear chromosomal DNA of the wt strain *S. ambofaciens* DSM40697 ends in TIRs of 210 kb (4). In the mutant strain NSA135HPP, a deletion of the terminal 850 kb was found on one chromosomal arm while 480 kb of sequence identical to the end of the other arm were duplicated and fused at the deletion terminus. The new TIR generated by this deletion-duplication event corresponded to the duplicated 480 kb of

```

met ala thr met thr ala arg ile thr glu his thr thr thr gly met pro glu val ala
1  ATG GCG ACC ATG ACC GCA CGG ATC ACC GAG CAC ACC ACC AGC GGC ATG CCG GAG GTG GCG
      gly
asp pro ser lys val ala pro lys asp ala arg glu leu ser lys leu phe phe gln gln
61  GAC CCG TCC AAG GTG GCG CCC AAG GAC GCG CGG GAG TTG TCG AAG CTC TTC TTC CAG CAG
leu ser val leu glu glu gly thr pro glu tyr gln tyr ala arg asn thr leu ile glu
121 CTG TCG GTC CTC GAA GAG GGC ACA CCC GAA TAC CAG TAC GCG CGC AAC ACG CTG ATC GAG
met asn met ser leu val arg phe ala ala gly arg phe arg ser arg gly pro glu glu
181 ATG AAC ATG TCC CTG GTC CGC TTC GCG GCC GGC CGC TTC CGC AGC CGC GGA CCG GAG GAG
met glu asp ile val gln val gly met ile gly leu ile lys ala ile asp arg phe glu
241 ATG GAG GAC ATC CTC CAG GTC GGC ATC ATC GGC CTC ATC AAG GCC ATC GAC CCG TTC GAG
leu thr arg glu val glu phe thr ser phe ala val pro tyr ile val gly glu ile lys
301 CTC ACC CGC GAG GTC GAG TTC ACC TCC TTC GCC CTC CCC TAC ATC GTC GGC GAG ATC AAG
arg phe phe arg asp thr ser trp ala val his val pro arg arg leu gln glu ala arg
361 CGG TTC TTC CGT GAC ACC TCC TGG GCC GTC CAC GTG CCC CGC CGC CTC CAG GAG GCC CGC
val gln leu ala arg ala thr glu glu leu arg ser arg leu gly arg asn pro thr thr
421 GTC CAG CTG GCC CCG ACC GAG GAG CTG CCG ACC CCG CTS GGC CGC AAC CCC ACC ACC
lys glu leu ser glu leu met ser leu pro glu asp glu val val glu ala arg leu ala
481 AAG GAA CTG TCC GAG CTC ATG AGC CTC CCG GAG GAC GAG GTC GTC GAG GCC CGC CTC GCG
ala asn gly tyr asn ser ala ser leu asp ala ala ile ser gly ser glu asp gly glu
541 GCC AAC GGC TAC AAC TCC GCC TCC CTG GAC GCG GCC ATC AGC GGC AGC GAG GAC GGC GAG
ser ala leu ala asp phe ile gly ala asp asp ala thr leu ala leu val asp asp phe
601 TCC GCC CTG GCC GAC TTC ATC GGC GCC GAC GAC GCC ACC CTC GCC CTG GTC GAC GAC TTC
his ala leu ala pro met ile ala glu leu asp glu arg asp arg gln ile his trp
661 CAC GCG CTC GCC CCG ATG ATC GCC GAG CTC GAC GAG CGC GAC CGT CAG ATC ATC CAC TGG
arg phe val glu glu leu thr gln lys asp ile gly glu arg leu gly val ser gln met
721 CGG TTC GTG GAG GAG CTC ACC CAG AAG GAC ATC GGC GAG CGC CTC GGC CTC TCC CAG ATG
his val ser arg leu ile ser arg leu leu ala arg leu arg glu gly met leu thr asp
781 CAC GTC TCC CGG CTR ATC TCG CGC CTG CTG GCC CGC CTG CGC GAA GGC ATC CTC ACC GAC
      g cg
his *
841 CAC TGA
      gc
      ala
    
```

FIG. 4. DNA nucleotide sequence and the deduced amino acid sequence of *hasR*. Nucleotide and amino acid differences in *hasL* are shown in bold. The conserved regions 2.4 (positions 342–408) and 4.2 (positions 727–822) are underlined. The translational stop codon is indicated by an asterisk.

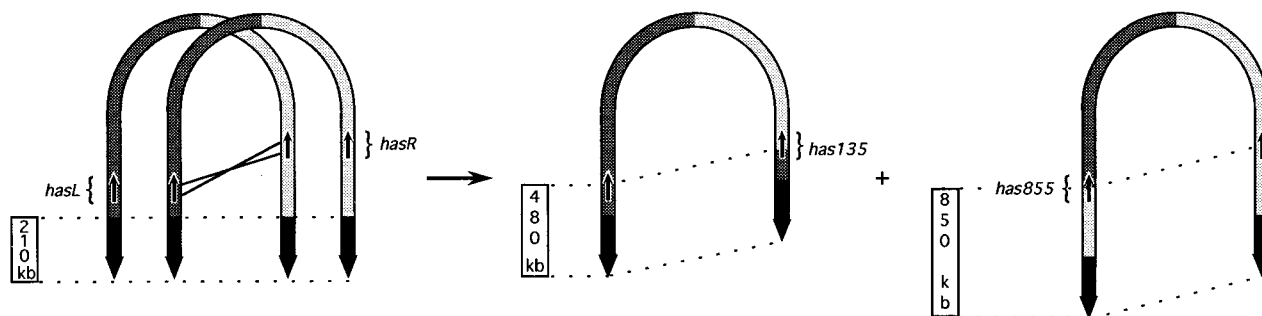


FIG. 5. Sister chromosome exchange in *S. ambofaciens* DSM40697. The left and right chromosomal arms are shown in dark and light gray, respectively; the TIRs of the wt strain are shown as thick, black arrows. The transcriptional orientation is defined by the thin arrow. Both reciprocal products of the recombination correspond to the chromosomal structure of strains NSA135HPP (left product) and NSA855 (right product). The new TIRs are delimited by dotted lines.

DNA since the undeleted arm has retained its wild-type structure (Fig. 1).

Conversely, in strain NSA855, the terminal 850 kb, corresponding to the deleted area in NSA135HPP, were duplicated and fused to the deletion terminus on the other arm (which was deleted of its terminal 480 kb corresponding to the translocated DNA in NSA135HPP). So, in strain NSA855, TIRs of 850 kb were generated by this event. The deletion contained sequences from the left chromosomal arm while the right one was not affected. This situation was unexpected because, usually, fragments from the left arm were only deleted when fragments *AseI*-G and E, from the right arm, were already deleted (28, 34).

The simplest hypothesis to account for these rearrangements is a sister chromosome exchange resulting from a single, nonallelic crossover between the two copies of the *has* gene (Fig. 5). The presence of numerous copies of the chromosome within the same article of the *Streptomyces* mycelium could favor interchromosomal recombination. Moreover, an additional crossing-over within the wt 210 kb TIR between these sister chromosomes would pass unnoticed and would generate the same products.

However, as both strains were isolated independently, each of the two chromosomal structures results from independent crossovers. Each of these crossovers could correspond either to a half-exchange generating only one of the two reciprocal structures or to a full exchange, which would have formed both structures at the same time (35). In this case, for each crossover only one of the two chromosomal structures would have been isolated.

Alternatively, a mechanism involving repair of a double-strand break cannot be ruled out. A recombinogenic free end within one copy of the *has* gene could invade the homologue and initiate a replication fork. The homologue used as substrate could be located either on the same or on another copy of the chromosome. If this replication proceeds until the end of the chromosome, it will lead to the duplication of the unbroken arm, in a way similar to the "copy break" duplication described in yeast (36). However, this mechanism implies unscheduled replication over hundreds of kilobases (e.g., 850 kb in strain NSA855) and terminal protein recruitment at the 5' end.

In any case, both mechanisms involve homologous recombination. The 817-bp region of perfect identity between *hasL* and *hasR* is sufficient to promote homologous recombination since it requires at least 200 bp of identity in *Streptomyces* (37). Until now, chromosomal instability in *Streptomyces* was thought to result from illegitimate recombination (38). Here we show the implication of homologous recombination in the formation of large chromosomal deletion.

The sequence similarity between *hasR* and *hasL* is quite striking. Gene families are not a prominent feature of bacterial

genetics but other examples of nearly identical copies of a gene, on distinct chromosomal loci, have been documented. This includes *tufA* and *tufB* (39, 40) or *gadA* and *gadB* in *E. coli* (41). Comparison of *hasR* and *hasL* sequences showed that the 6 nt that were different were clustered in the 5' and 3' coding regions of the genes. This also was true for the differences between the pairs of genes *tufA*, *tufB* and *gadA*, *gadB*. In *Salmonella typhimurium*, sequence information are transferred between *tufA* and *tufB* by gene conversion (42). The authors proposed that a mechanism of sister chromosome reciprocal exchange and segregation of the products in different cells could account for the high nucleotide similarities between the two genes. The high level of identity between the *has* gene could also be a result of sequence transfer. The nonallelic recombination described here shows that recombination between the two copies is possible.

Chromosomal arm replacement also altered the position of the replication origin compared with its balanced central location in the wt chromosome (Fig. 5) (25, 43). This situation is reminiscent of the chromosomal organization of *S. rimosus* where the *dnaA* region is asymmetrically located on the chromosome (from 34 to 44% of the chromosome from one end) and the TIR of 550 kb were the longest previously reported (5).

In addition, exchanges of DNA ends between the linear plasmid and chromosome via a single illegitimate recombination event were characterized (8, 44). These recombination events led to the formation of a hybrid chromosome with two different ends. However, all *Streptomyces* linear replicons are characterized by identical sequences in inverted orientation at their termini (6). The TIRs are highly polymorphic among linear replicons of *Streptomyces*, indicative of a dynamic turnover to such a degree that the selected character would be the presence of the repeated structure itself rather than the sequences. Thus, the universal presence of TIR supports the existence of a biological function for such a structure in nature. One explanation could be that the TIRs promote a strong interaction between the two ends as hypothesized by the racket-frame model (6). In addition, while the chromosomal DNA was shown to be physically linear, the circularity of the genetic map in several *Streptomyces* species supports this model (45, 46). In natural isolates, hybrid chromosomes might be selected against because of the lacking interaction between DNA ends.

The chromosomal arm replacement described here is a mechanism leading to the creation of new TIRs. One can speculate that this mechanism could re-form TIRs from a hybrid chromosome. Such a mechanism would provide an explanation of the structure of the TIR in *S. lividans* 66, where only the terminal 16 kb of the 25-kb TIRs are identical to one end of SLP2 (1). An ancestral exchange of ends between SLP2 and the chromosome would have generated a hybrid chromo-

some with two different ends. Subsequently, the terminal sequences on both chromosomal arms would have become the same via chromosomal arm replacement. This would have involved a DNA segment of 25 kb, larger than the 16 kb originating from the plasmid.

This mechanism would imply the duplication of sequences originating from one chromosomal arm onto the other. The presence of the *catA* gene in each copy of the TIR of *S. coelicolor* M145 (47) strongly suggests a duplication of a DNA segment that could have arisen by the mechanism described above. Another example is seen in strain NSA855, where the polyketide synthase gene localized on the *AseI*-E fragment in the wt strain (48) is duplicated within the new TIR of 850 kb.

Finally, large chromosomal rearrangements have evolutionary implications on the organization of the bacterial chromosome (35). The plasticity of the DNA ends may be a general feature of the linear replicons. The exchange of telomeric regions also was described in the bacteria *Borrelia* and *Rhodococcus* (49, 50), and in eukaryotes, numerous examples suggest that the sequestering of the telomere regions would allow this genomic domain to be plastic relative to the rest of the chromosomes (51). In *Streptomyces*, the plasticity of the ends of the linear replicons, associated to the horizontal transfer of genetic information (conjugative plasmids and chromosome transfer), could be seen as a rapid evolutionary diversification system.

This study was supported by the Ministère de l'Éducation Nationale, de l'Enseignement Supérieur et de la Recherche. G.F. was the recipient of a grant from the Association pour la Recherche sur le Cancer. The sequencing advice from Dominique Schneider was greatly appreciated. We thank C. Hoyle for her help in the preparation of the manuscript.

- Lin, Y.-S., Kieser, H. M., Hopwood, D. A. & Chen, C. W. (1993) *Mol. Microbiol.* **10**, 923–933.
- Kinashi, H. (1994) *Actinomycetology* **8**, 87–96.
- Lezhava, A., Mizukami, T., Kajitani, T., Kameoka, D., Redenbach, M., Shinkawa, H., Nimi, O. & Kinashi, H. (1995) *J. Bacteriol.* **177**, 6492–6498.
- Leblond, P., Fischer, G., Francou, F. X., Berger, F., Guérineau, M. & Decaris, B. (1996) *Mol. Microbiol.* **19**, 261–271.
- Pandza, K., Pfalzer, G., Cullum, J. & Hranueli, D. (1997) *Microbiology* **143**, 1493–1501.
- Sakaguchi, K. (1990) *Microbiol. Rev.* **54**, 66–74.
- Chen, C. W., Yu, T.-W., Lin, Y.-S., Kieser, H. M. & Hopwood, D. A. (1993) *Mol. Microbiol.* **7**, 925–932.
- Pandza, S., Biuković, G., Paravić, A., Dadbin, A., Cullum, J. & Hranueli, D. (1998) *Mol. Microbiol.* **28**, 1165–1176.
- Wu, X. & Roy, K. L. (1993) *J. Bacteriol.* **175**, 37–52.
- Kinashi, H., Shimaji-Murayama, M. & Hanafusa, T. (1991) *Plasmid* **26**, 123–130.
- Huang, C. H., Lin, Y.-S., Yang, Y.-A., Huang, S.-W. & Chen, C. W. (1998) *Mol. Microbiol.* **28**, 905–916.
- Chang, P.-C. & Cohen, S. N. (1994) *Science* **265**, 952–954.
- Chen, C. W. (1996) *Trends Genet.* **12**, 192–196.
- Qin, Z. & Cohen, S. N. (1998) *Mol. Microbiol.* **28**, 893–903.
- Stackebrandt, E., Liesack, W. & Witt, D. (1992) *Gene* **115**, 255–260.
- Takeuchi, T., Sawada, H., Tanaka, F. & Matsuda, I. (1996) *Int. J. Syst. Bacteriol.* **46**, 476–479.
- Leblond, P., Redenbach, M. & Cullum, J. (1993) *J. Bacteriol.* **175**, 3422–3429.
- Chen, C. W., Lin, Y.-S., Yang, Y.-L., Lin, W.-Y., Chang, H.-W., Kieser, H. M. & Hopwood, D. A. (1994) *Actinomycetol.* **8**, 103–112.
- Fischer, G., Kyriacou, A., Decaris, B. & Leblond, P. (1997) *Biochimie* **79**, 555–558.
- Leblond, P. & Decaris, B. (1994) *FEMS Microbiol. Lett.* **123**, 225–232.
- Volff, J.-N. & Altenbuchner, J. (1998) *Mol. Microbiol.* **27**, 239–246.
- Sambrook, J., Fritsch, E. F. & Maniatis, T. (1989) *Molecular Cloning: A Laboratory Manual* (Cold Spring Harbor Lab. Press, Cold Spring Harbor, NY).
- Hopwood, D. A., Bibb, M. J., Chater, K. F., Kieser, T., Bruton, C. J., Kieser, H. M., Lydiate, D. J., Smith, C. P., Ward, J. M. & Schrepf, H. (1985) *Genetic Manipulation of Streptomyces: A Laboratory Manual* (The John Innes Foundation, Norwich, CT).
- Evans, G. A., Lewis, K. & Rothenberg, B. E. (1989) *Gene* **79**, 9–20.
- Berger, F., Fischer, G., Kyriacou, A., Decaris, B. & Leblond, P. (1996) *FEMS Microbiol. Lett.* **143**, 167–173.
- Yanisch-Perron, C., Viera, J. & Messing, J. (1985) *Gene* **33**, 103–119.
- Altschul, S. F., Madden, T. L., Schäffer, A. A., Zhang, J., Zhang, Z., Miller, W. & Lipman, D. J. (1997) *Nucleic Acids Res.* **25**, 3389–3402.
- Leblond, P., Demuyter, P., Simonet, J.-M. & Decaris, B. (1991) *J. Bacteriol.* **173**, 4229–4233.
- Bibb, M. J., Findlay, P. R. & Johnson, M. W. (1984) *Gene* **30**, 157–166.
- Kato, F., Hino, T., Tanaka, M. & Koyama, Y. (1995) *Mol. Gen. Genet.* **247**, 387–390.
- Potůčková, L., Kelemen, G. H., Findlay, K. C., Lonetto, M. A., Buttner, M. J. & Kormanec, J. (1995) *Mol. Microbiol.* **17**, 37–48.
- Lonetto, M., Gribskov, M. & Gross, C. A. (1992) *J. Bacteriol.* **174**, 3843–3849.
- Strohl, W. R. (1992) *Nucleic Acids Res.* **20**, 961–974.
- Fischer, G., Decaris, B. & Leblond, P. (1997) *J. Bacteriol.* **179**, 4553–4558.
- Roth, J. R., Benson, N., Galitski, T., Haack, K., Lawrence, J. G. & Miesel, L. (1996) in *Escherichia coli and Salmonella typhimurium. Cellular and Molecular Biology*, ed. Neidhardt, F. C. (Am. Soc. Microbiol., Washington, DC), pp. 2256–2276.
- Morrow, D. M., Connelly, C. & Hieter, P. (1997) *Genetics* **147**, 371–382.
- Wohlleben, W., Hartmann, V., Hillemann, D., Krey, K., Muth, G., Nussbaumer, B. & Pelzer, S. (1994) *Acta Microbiol. Immunol. Hung.* **41**, 381–389.
- Birch, A., Häusler, A., Rüttener, C. & Hütter, R. (1991) *J. Bacteriol.* **173**, 3531–3538.
- An, G. & Friesen, J. D. (1980) *Gene* **12**, 33–39.
- Yokata, T., Sugisaki, H., Takanami, M. & Kaziro, Y. (1980) *Gene* **12**, 25–31.
- Smith, D. K., Kassam, T., Singh, B. & Elliott, J. F. (1992) *J. Bacteriol.* **174**, 5820–5826.
- Abdulkarim, F. & Hughes, D. (1996) *J. Mol. Biol.* **260**, 506–522.
- Fischer, G., Holl, A. C., Wolff, J.-N., Vandewiele, D., Decaris, B. & Leblond, P. (1998) *Res. Microbiol.* **149**, 203–210.
- Gravius, B., Glocker, D., Pigac, J., Pandza, K., Hranueli, D. & Cullum, J. (1994) *Microbiology* **140**, 2271–2277.
- Pigac, J. & Alacevic, M. (1979) *Period Biol.* **81**, 575–582.
- Hopwood, D. A. (1966) *Genetics* **54**, 1177–1184.
- Redenbach, M., Kieser, H. M., Denapate, D., Eichner, A., Cullum, J. & Hopwood, D. A. (1996) *Mol. Microbiol.* **21**, 77–96.
- Aigle, B., Schneider, D., Morilhat, C., Vandewiele, D., Dary, A., Holl, A. C., Simonet, J.-M. & Decaris, B. (1996) *Microbiology* **142**, 2815–2824.
- Kalkus, J., Dörrie, C., Fischer, D., Reh, M. & Schlegel, H. G. (1993) *J. Gen. Microbiol.* **139**, 2055–2065.
- Casjens, S., Murphy, M., DeLange, M., Sampson, R., van Vugt, R. & Huang, W. H. (1997) *Mol. Microbiol.* **26**, 581–596.
- Pryde, F. E., Gorham, H. C. & Louis, E. J. (1997) *Curr. Opin. Genet. Dev.* **7**, 822–828.