



HAL
open science

Adenosine Stimulates the Migration of Human Endothelial Progenitor Cells. Role of CXCR4 and MicroRNA-150

Magali Rolland-Turner, Emeline Goretti, Mélanie Bousquenaud, Frédérique Léonard, Christelle Nicolas, Lu Zhang, Fatiha Maskali, Pierre-Yves Marie, Yvan Devaux, Daniel Wagner

► **To cite this version:**

Magali Rolland-Turner, Emeline Goretti, Mélanie Bousquenaud, Frédérique Léonard, Christelle Nicolas, et al.. Adenosine Stimulates the Migration of Human Endothelial Progenitor Cells. Role of CXCR4 and MicroRNA-150. PLoS ONE, 2013, 8 (1), pp.e54135. 10.1371/journal.pone.0054135. hal-01737455

HAL Id: hal-01737455

<https://hal.univ-lorraine.fr/hal-01737455v1>

Submitted on 19 Mar 2018

HAL is a multi-disciplinary open access archive for the deposit and dissemination of scientific research documents, whether they are published or not. The documents may come from teaching and research institutions in France or abroad, or from public or private research centers.

L'archive ouverte pluridisciplinaire **HAL**, est destinée au dépôt et à la diffusion de documents scientifiques de niveau recherche, publiés ou non, émanant des établissements d'enseignement et de recherche français ou étrangers, des laboratoires publics ou privés.

Adenosine Stimulates the Migration of Human Endothelial Progenitor Cells. Role of CXCR4 and MicroRNA-150

Magali Rolland-Turner¹, Emeline Goretti¹, Mélanie Bousquenaud¹, Frédérique Léonard¹, Christelle Nicolas¹, Lu Zhang¹, Fatiha Maskali², Pierre-Yves Marie², Yvan Devaux^{1*}, Daniel Wagner^{1,3}

1 Laboratory of Cardiovascular Research, Public Research Centre – Health (CRP – Santé), Luxembourg, Luxembourg, **2** Nancyclotep Experimental Imaging Platform, Vandoeuvre-les-Nancy, France, **3** Division of Cardiology, Centre Hospitalier, Luxembourg, Luxembourg

Abstract

Background: Administration of endothelial progenitor cells (EPC) represents a promising option to regenerate the heart after myocardial infarction, but is limited because of low recruitment and engraftment in the myocardium. Mobilization and migration of EPC are mainly controlled by stromal cell-derived factor 1 α (SDF-1 α) and its receptor CXCR4. We hypothesized that adenosine, a cardioprotective molecule, may improve the recruitment of EPC to the heart.

Methods: EPC were obtained from peripheral blood mononuclear cells of healthy volunteers. Expression of chemokines and their receptors was evaluated using microarrays, quantitative PCR, and flow cytometry. A Boyden chamber assay was used to assess chemotaxis. Recruitment of EPC to the infarcted heart was evaluated in rats after permanent occlusion of the left anterior descending coronary artery.

Results: Microarray analysis revealed that adenosine modulates the expression of several members of the chemokine family in EPC. Among these, CXCR4 was up-regulated by adenosine, and this result was confirmed by quantitative PCR (3-fold increase, $P < 0.001$). CXCR4 expression at the cell surface was also increased. This effect involved the A_{2B} receptor. Pretreatment of EPC with adenosine amplified their migration towards recombinant SDF-1 α or conditioned medium from cardiac fibroblasts. Both effects were abolished by CXCR4 blocking antibodies. Adenosine also increased CXCR4 under ischemic conditions, and decreased miR-150 expression. Binding of miR-150 to the 3' untranslated region of CXCR4 was verified by luciferase assay. Addition of pre-miR-150 blunted the effect of adenosine on CXCR4. Administration of adenosine to rats after induction of myocardial infarction stimulated EPC recruitment to the heart and enhanced angiogenesis.

Conclusion: Adenosine increases the migration of EPC. The mechanism involves A_{2B} receptor activation, decreased expression of miR-150 and increased expression of CXCR4. These results suggest that adenosine may be used to enhance the capacity of EPC to revascularize the ischemic heart.

Citation: Rolland-Turner M, Goretti E, Bousquenaud M, Léonard F, Nicolas C, et al. (2013) Adenosine Stimulates the Migration of Human Endothelial Progenitor Cells. Role of CXCR4 and MicroRNA-150. PLoS ONE 8(1): e54135. doi:10.1371/journal.pone.0054135

Editor: Maurizio Pesce, Centro Cardiologico Monzino, Italy

Received: May 16, 2012; **Accepted:** December 10, 2012; **Published:** January 9, 2013

Copyright: © 2013 Rolland-Turner et al. This is an open-access article distributed under the terms of the Creative Commons Attribution License, which permits unrestricted use, distribution, and reproduction in any medium, provided the original author and source are credited.

Funding: This study was supported by the Society for Research on Cardiovascular Diseases and the Ministry of Culture, Higher Education and Research of Luxembourg. FL is the recipient of a fellowship from the National Fund for Research of Luxembourg (grant # TR-PHF BFR07-132). The funders had no role in study design, data collection and analysis, decision to publish, or preparation of the manuscript.

Competing Interests: The authors have declared that no competing interests exist.

* E-mail: yvan.devaux@crp-sante.lu

Introduction

Cardiovascular diseases are a major cause of mortality and their prevalence is expected to increase substantially [1]. Cell therapy with endothelial progenitor cells (EPC) has emerged as a promising strategy to revascularize the heart after acute myocardial infarction (MI) and thereby limit left ventricular remodeling and the incidence of heart failure (HF).

Some clinical studies [2–4] using EPC showed promising results, but the benefit was limited, in part, by a low retention of the injected cells in the myocardium. Improving EPC recruitment to the site of injury by increasing the expression of certain cell surface receptor has the potential to improve cardiac repair. The stromal cell-derived factor-1 α (SDF-1 α)/CXCR4 axis is highly implicated

in EPC mobilization from the bone marrow and homing to vascular lesions [5–8]. Impaired CXCR4 signaling reduces the revascularization capacity of EPC in patients with coronary artery disease [9]. Moreover, the administration of endothelial colony forming cells that overexpress CXCR4 resulted in a significant increase in tissue healing and capillary density in the hindlimb ischemia model [10].

MicroRNAs (miRNAs) are short oligonucleotides able to regulate gene expression. Following ischemic stress, the expression of miR-150 in bone marrow derived mononuclear cells is inhibited [11]. Knowing that CXCR4 is a target of miR-150 [11], this raises the possibility that miR-150 may be involved in the regulation of EPC recruitment to the ischemic heart. In the infarcted heart, Adenosine (Ado) is produced by dephosphorylation of adenosine

Table 1. Quantitative PCR primers.

Gene	Accession number	Forward primer	Reverse primer	T°C
β -actin	NM_0011101	AGAAAATCTGGCACCACACC	GGGGTGTGAAGGTCTCAA	60
CXCR4	NM_001008540	TATCCTGCCTGGTATTGTC	GGAAATCATCAAGCAAGGG	50
A ₁	NM_000674	GACCTACTCCACACCTG	TCACCACCATCTTGATCC	58
A _{2A}	NM_000675	TCTTCAGTCTCTGGCCATC	GGGACCACATCTCAAAGAG	64
A _{2B}	NM_000676	TCCATCTTCAGCCTTCTG	GCACTGTCTTACTGTCC	55
A ₃	NM_000677	TCATCTGCGTGGTCAAGC	CTGTAGAAGTGGATTGTGATGC	62

Annealing temperatures are indicated.
doi:10.1371/journal.pone.0054135.t001

tri-phosphate (ATP) in a large amount. Ado exerts its effects through interaction with cell surface G protein-coupled receptors subdivided into four subtypes: A₁, A_{2A}, A_{2B} and A₃ receptors [12]. Cardioprotective properties of Ado have been described in the setting of reperfusion but the effect of Ado on cardiac repair has not been studied in detail. Recent studies have shown that Ado increases the adhesion of human EPC to cardiac microvascular endothelial cells [13]. We have previously reported that Ado affects several processes involved in cardiac repair, such as extracellular matrix turnover [14,15], angiogenesis [16–18] and inflammation [19–21]. Moreover, we recently characterized the EPC response to Ado using systems-based approaches [22].

In the present study, we determined whether Ado affects the migration of EPC.

Materials and Methods

Materials

All materials and reagents were from Sigma (Bornem, Belgium) unless specified. Ficoll was from ICN Flow (Asse-Relegem, Belgium). The A_{2B} Ado receptor antagonist was MRS 1754 (8-[4-[(4-Cyanophenyl)carbamoylmethyl]oxy]phenyl]-1,3-di(n-propyl)xanthine). EHNA (erythro-9-(2-Hydroxy-3-nonyl) adenosine hydrochloride) was used as Ado deaminase inhibitor and dipyrindamole (DIP) was used as inhibitor of Ado intracellular uptake. CADO (2-Chloroadenosine) and 8-SPT (8-(p-Sulfophenyl)theophylline hydrate) were used as non-specific agonist and antagonist of Ado receptors, respectively. The E-Toxate[®] reagent from *Limulus polyphemus* (LAL assay having a detection sensitivity of 0.05 EU/mL) was used to ensure the absence of endotoxin contamination in Ado and other drugs used in the study. SDF-1 α was purchased from Peprotech (London, UK). Anti CXCR4 neutralizing antibodies and SDF-1 α ELISA detection kit were from R&D System (Oxon, UK).

Cell culture

Peripheral blood mononuclear cells (PBMCs) were isolated by Ficoll gradient using Leucosep tubes (Greiner Bio-One, Wemmel, Belgium). Early EPC were obtained as previously described by others [23]. Shortly, 8.10⁶ PBMCs were seeded onto human fibronectin (2.5 μ g/cm²) pre-coated 6-well plates and cultured in EBM medium supplemented with bovin brain extract, human recombinant endothelial growth factor, hydrocortisone, gentamicin, amphotericin B and 20% fetal calf serum (FCS) (Laboratoires Eurobio, Les Ulis, France). After 3 days of culture, non-adherent cells were discarded and adherent cells were cultured for another 24 hours prior to treatment. EPC were characterized by dual positive staining for 1,1_-dioctadecyl-3,3_,3_-tetramethylindocarbocyanine-labeled acetyl-low-density lipoprotein (DiIAcLDL)

(Invitrogen, Merelbeke, Belgium) and lectin from *Ulex europaeus*. By flow cytometry, early EPC were CD133+/CD34+/CD45+/CD14+/CD31+/vWF+/VEGFR2+/CD144-/CD105+. The cell population typically contained over 95% of CD14+/CD45+/CXCR4+ cells. Ischemic culture conditions were achieved by incubation of EPC with 0.1% BSA under 1% O₂ and 5% CO₂. Human primary cardiac fibroblasts purchased from TCS CellWorks Ltd were cultured in fibroblast medium supplemented with fibroblast growth supplement and 2% FCS (TCS CellWorks Ltd, Buckingham, UK). Prior to the experiments, fibroblasts were rendered quiescent in fibroblast medium supplemented with insulin (10 μ g/mL), transferrin (5.5 μ g/mL), sodium selenite (5 pg/mL), BSA (0.5 mg/mL) and linoleic acid (4.7 μ g/mL) for 5 hours. Cells were incubated with Ado and EHNA (10 μ mol/L). A_{2B} receptor antagonist was added 15 min prior to Ado treatment. Primary human monocytes were isolated from healthy volunteers, as described [14,15].

Flow cytometry

Cells were harvested using cell dissociation solution and washed twice in phosphate-buffered saline (PBS, Lonza, Verviers, Belgium) supplemented with 1% BSA. 200,000 cells were treated with the appropriate amount of Fc blocking reagent (Miltenyi, Utrecht, The Netherlands) and were then stained with specific antibodies or the corresponding isotype control in 50 μ L PBS-1% BSA for 30 min at 4°C. After washing, cells were fixed using the commercial BD FACS lysis solution according to manufacturer's instructions. All antibodies were purchased from Immunotools, except CD184-APC (BD Biosciences, Erembodegem, Belgium). To eliminate dead cells from analysis, LIVE/DEAD[®] Fixable Near-IR Dead Cell Stain Kit was used according to the manufacturer's instructions (Invitrogen). 20,000 to 40,000 events were acquired on a BD FACSCanto[™] flow cytometer and analysis was performed with the FACSDiva[™] software (BD Biosciences). Overlays were obtained using FlowJo 7.2.4 software.

RNA interference assay

Cells were transfected using INTERFERin[™] siRNA transfection reagent according to the manufacturer's instructions (Polyplus-transfection, Illkirch, France). Cells were transfected with 20 nM HS_ADORA2B_6_HP (Qjagen, Venlo, The Netherlands), pre-miR[™] miRNA precursor hsa-miR-150, anti-miR[™] miRNA inhibitor hsa-miR-150 or their respective negative controls (Applied Biosystems, Lennik, Belgium). INTERFERin-RNA complexes were allowed to form for 10 min at room temperature in a final volume of 100 μ L of serum free medium before addition to the cells. After 24 or 48 hours, cells were treated with 10 μ mol/L Ado for 4 or 6 hours prior harvesting.

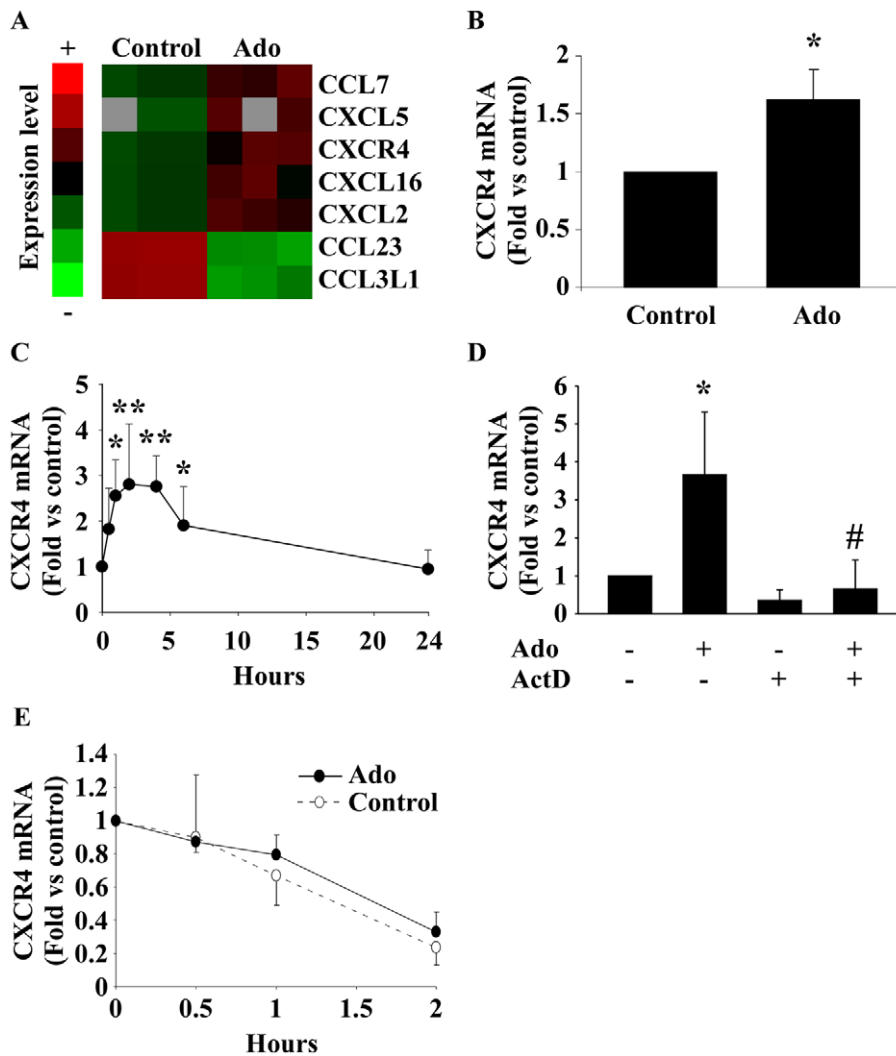


Figure 1. Adenosine increases CXCR4 mRNA expression. A. Transcriptomic analysis of EPC treated with 10 $\mu\text{mol/L}$ Ado for 6 hours using microarrays. The heat map indicates chemokines and chemokine receptors differentially expressed following Ado treatment (all with q values ≤ 0.001). B. Confirmation of CXCR4 over-expression in EPC treated by 10 $\mu\text{mol/L}$ Ado for 6 hours using quantitative PCR. Expression values were normalized to β -actin and to untreated cells. * $P < 0.05$ vs control ($n = 3$). C. Kinetic of the effect of Ado on CXCR4 mRNA expression. * $P < 0.05$ vs control. ** $P < 0.001$ vs control. $P < 0.001$ using ANOVA ($n = 5$). D. Effect of actinomycin D (ActD). EPC were pre-treated by 5 $\mu\text{g/mL}$ ActD for 30 min before treatment with 10 $\mu\text{mol/L}$ Ado. CXCR4 mRNA expression was assessed after 2 hours. * $P < 0.01$ vs control. # $P < 0.01$ vs Ado ($n = 3$). E. EPC were pre-treated with ActD (5 $\mu\text{g/mL}$) for 30 min and were incubated with Ado for different time periods (30 min, 1 h and 2 h) before assessment of CXCR4 mRNA by PCR ($n = 4$). doi:10.1371/journal.pone.0054135.g001

Real-time quantitative PCR

For assessment of messenger RNA expression, total RNA was isolated using TriReagent[®] and the RNeasy[®] mini kit (Qiagen) according to the manufacturer's instructions. Potential contaminating genomic DNA was digested by DNase I treatment (Qiagen). One μg of total RNA was reverse-transcribed using the Superscript[®] II Reverse Transcriptase (Invitrogen). PCR primers were designed using the Beacon Designer software (Premier Biosoft, Palo Alto, USA) and were chosen to encompass an intron. Primer details are shown in Table 1. PCR was performed using the iCycler[®] and the IQTM SYBR[®] Green Supermix (Bio-Rad, Nazareth Eke, Belgium). 1/10 dilution of cDNA was used. PCR conditions were as follows: 3 min at 95°C, 30 sec at 95°C and 1 min annealing (40-fold). Optimal annealing temperature was determined for each primer pair. Melting point analysis was obtained after 80 cycles for 10 sec from 55°C up to

95°C. Each run included negative reaction controls. β -actin was chosen as housekeeping gene for normalization. Expression levels were calculated by the relative quantification method ($\Delta\Delta\text{Ct}$) using the Genex software (Bio-Rad) which takes into account primer pair efficiency.

For assessment of miRNA expression, total RNA was extracted using the miRVana isolation kit (Applied Biosystems). Five hundred ng of total RNA were used for reverse transcription using miScript reverse transcription kit (Qiagen). PCR was performed using the miScript SYBR-green PCR kit and the Homo sapiens_miR-150miScript Primer Assay (MS00003577) according to manufacturer's instructions (Qiagen). U6 (Homo sapiens_RNU6-2_1 miScript Primer Assay, MS00033740, Qiagen) was used for normalisation. Expression levels were calculated by the $\Delta\Delta\text{Ct}$ method.

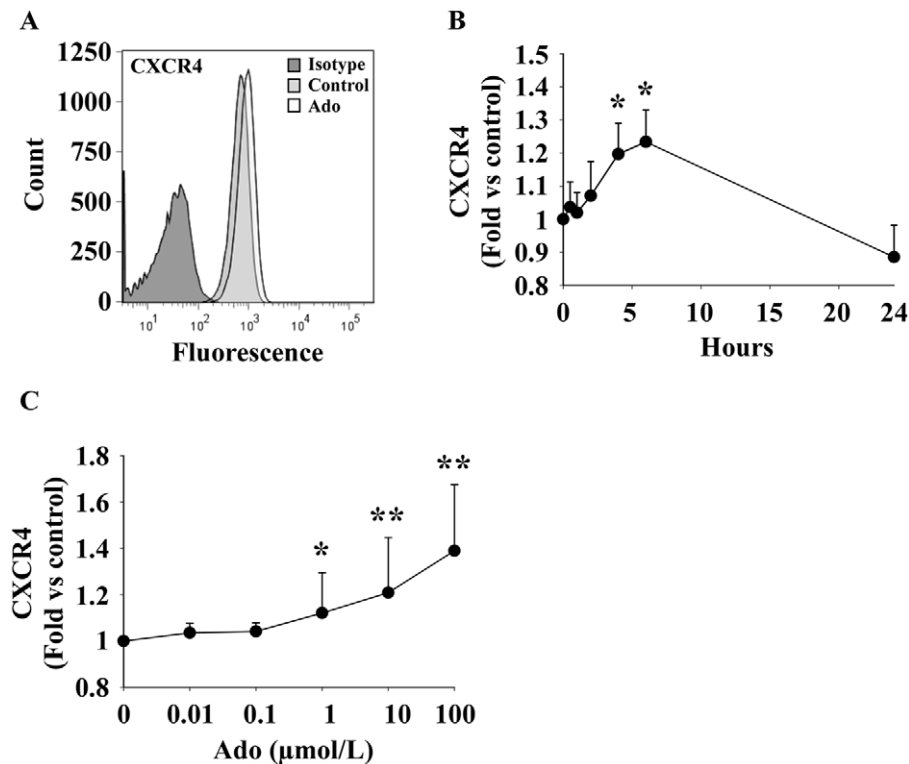


Figure 2. Adenosine enhances cell surface expression of CXCR4. EPC were treated with Ado and CXCR4 expression was assessed by flow cytometry. A. Representative histogram of EPC treated by 10 $\mu\text{mol/L}$ Ado for 6 hours. Dark grey: isotype control. Light grey: CXCR4 staining of control cells. White: CXCR4 staining of Ado-treated cells. B. Kinetic of CXCR4 expression on EPC treated by 10 $\mu\text{mol/L}$ Ado. * $P < 0.001$ vs control ($n = 10$). C. Dose-dependent effect of Ado on CXCR4 expression on EPC harvested 6 hours after treatment. * $P < 0.05$ vs control. ** $P < 0.01$ vs control ($n = 3$). doi:10.1371/journal.pone.0054135.g002

Microarray

Cellular mRNA was analyzed by microarray as described previously [24]. Briefly, total RNA was analyzed for quantity (Nanodrop, Nanodrop products, Wilmington, USA) and purity (Bio Analyser, Agilent Technologies, Santa-Clara, USA) before amplification using the Amino Allyl Message Amp[®] kit (Ambion, Austin, USA). cDNA obtained after retrotranscription was labelled with Cy3 or Cy5, and hybridized onto human microarrays covering 25,000 genes [25]. Microarrays were scanned using an Axon 3000 B scanner (Molecular Devices, Sunnyvale, USA) and raw data were acquired with Genepix software (Molecular Devices). Data are available at the Gene Expression Omnibus database, accession number GSE26744. Expression levels were compared using Significance Analysis of Microarrays software and heat maps were drawn using TreeView software.

ELISA

Concentration of SDF-1 α in conditioned medium was measured using the Quantikine DSA00 ELISA kit (R&D Systems). Detection limit of the assay was 18 pg/mL.

In vitro migration assay

Chemotaxis experiments were performed using Costar[®] Transwell[™] Permeable Supports (Corning, Amsterdam, The Netherlands) with 5 μm pore size membrane. During the whole experiment, EPC medium containing no antibiotics and 5% FCS was used. Early EPC were treated for 6 hours with 10 μM Ado/EHNA or corresponding control treatment prior harvesting using cell dissociation solution. Cells were then incubated for

1 hour at 37°C with 10 $\mu\text{g/mL}$ of anti-CXCR4 neutralizing antibody or isotype control, and 175,000 cells were seeded in the upper chamber of the Transwell[™]. Transwells[™] were then placed into 24-wells plate containing SDF-1 α (0 to 100 ng/mL) or conditioned medium from fibroblasts. Cell migration was measured by DNA staining using CyQUANT[®] Cell Proliferation Assay Kit (Invitrogen, Eugene, Oregon, USA). Fluorescence was measured at 492/520 nm using a POLARstar OPTIMA (BMG Labtech, Paris, France).

Luciferase reporter assay

Human embryonic kidney (HEK) 293T cells were used for luciferase assay and maintained in DMEM supplemented with 10%FBS, 1% L-glutamine and 1% penicillin-streptomycin. HEK-293T cells were plated into 96-well plates and co-transfected using Lipofectamine 2000 (Invitrogen) with 10 ng of a reporter plasmid containing the 3' untranslated region (UTR) of CXCR4 inserted downstream of the Gaussian luciferase secreted reporter gene and the secreted alkaline phosphatase tracking gene (pEZX-MT05, GeneCopoeia, Labomics, Nivells, Belgium) and 30 nmol/L of premiR[™] miRNA precursor hsa-miR-150 (Applied Biosystems) or negative control. Gaussian luciferase and alkaline phosphatase activities were measured by luminescence in conditioned medium 48 hours after transfection using the secreted-pair dual luminescence kit (GeneCopoeia). Gaussian luciferase activity was normalized to alkaline phosphatase activity.

In vivo experiments

This study was conducted in accordance with the regulations of the Animal Welfare Act of the National Institutes of Health Guide

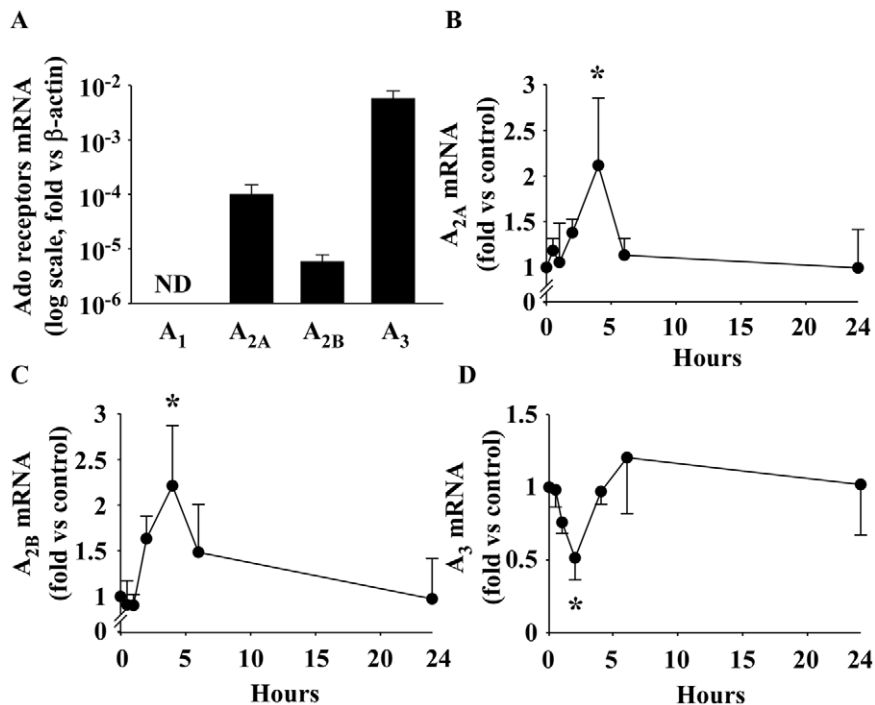


Figure 3. Expression of Ado receptors in EPC. A. mRNA expression profiles of the 4 Ado receptors in EPC were obtained by quantitative PCR. Significant differences were observed ($n=3$, $P=0.004$), the A₃ subtype being predominant and the A₁ subtype not detected (ND). Expression values were normalized to β -actin. B–D. Ado regulates the expression of its own receptors in EPC. mRNA expression was assessed by quantitative PCR at different times after treatment with 10 μ mol/L Ado ($n=3$). Ado transiently increased A_{2A} and A_{2B} expression ($P=0.003$ and $P=0.002$, respectively) and decreased A₃ expression ($P=0.01$). * $P\leq 0.01$ vs control. doi:10.1371/journal.pone.0054135.g003

for the Care and Use of Laboratory Animals (NIH Publication No. 85–23, revised 1996). Protocols were approved by local Ethics Committee and by the Regional Veterinary Department. 23 Wistar rats underwent permanent occlusion of the left anterior descending coronary artery (LAD) to induce MI [26–27]. 48 hours post surgery, 18F-Fluorodeoxyglucose (FDG) Positron Emission Tomography (PET) was performed to measure infarct size and myocardial damage as defined by cardiac segments showing 18F-FDG uptake $<50\%$. LAD-occluded animals were randomized according to infarct size into 3 groups: vehicle (NaCl, $n=7$), CADO (2 mg.kg⁻¹.d⁻¹, $n=8$) and CADO (2 mg.kg⁻¹.d⁻¹) with 8-SPT (10 mg.kg⁻¹.d⁻¹, $n=8$). These treatments were given intraperitoneally twice daily for 2 months, starting 7 days after LAD occlusion. After 2 months, rats were sacrificed and hearts were harvested to perform contiguous frozen sections (8 μ m), oriented along the vertical or horizontal long axis of the left ventricle depending on infarct location. Sections were fixed and permeabilized with methanol for 10 minutes, and blocked with BSA and serum for 1 hour. Polyclonal goat anti aldehyde dehydrogenase 2 (ALDH2) (Santa Cruz Biotechnology, Heidelberg, DE), mouse monoclonal anti CD31 (clone P2B1, Abcam, Cambridge, UK) and polyclonal rabbit anti CXCR4 (Abcam) were used as primary antibodies. Alexa Fluor[®]488-coupled donkey anti-mouse antibody, Alexa Fluor[®]568-coupled donkey anti-goat antibody and Alexa Fluor[®]688-coupled donkey anti-rabbit antibody (Invitrogen) were used as secondary antibodies. Staining specificity was ensured by omission of primary antibodies. DAPI (blue) was used to stain nuclei. Hematoxylin and eosin staining was performed to assess vascularization in heart sections. The number of vessels was counted in the whole section of each animal. Images

were recorded with a confocal microscope (Zeiss Laser Scanning Microscope LSM 510) and the LSM 510 META software.

Statistical analysis

Results are presented as mean \pm SD. Comparisons between two groups of continuous data were performed with two-tailed t-test for data with a normal distribution and Mann-Whitney test for non-normally distributed data. Normality was determined using the Shapiro-Wilk test. Comparisons between multiple groups were performed with one-way ANOVA for normal data and Kruskal-Wallis one-way ANOVA on ranks for non-normally distributed data. In case of significance, post-hoc tests (Dunn's or Holm-Sidak method) were run to isolate groups that differ from the others. Comparisons between multiple groups with two parameters were performed with two-way ANOVA. Statistical tests were performed with the SigmaPlot v11.0 software. A P value <0.05 was considered significant.

Results

Adenosine increases CXCR4 mRNA expression in EPC

Microarray experiments were performed to investigate whether Ado modulates the expression of members of the chemokine/receptor family. These experiments showed that a 6-hour treatment of EPC with 10 μ mol/L Ado modulates the expression of various chemokines and chemokine receptors. In particular, the chemokine receptor CXCR4 was up-regulated (Fig. 1A). Increased expression of CXCR4 by Ado was confirmed by PCR (Fig. 1B). Treating EPC with 10 μ mol/L Ado induced a transient increase of CXCR4 mRNA expression, reaching its maximum after 2 hours (3-fold, $P<0.001$) and declining after 4 hours

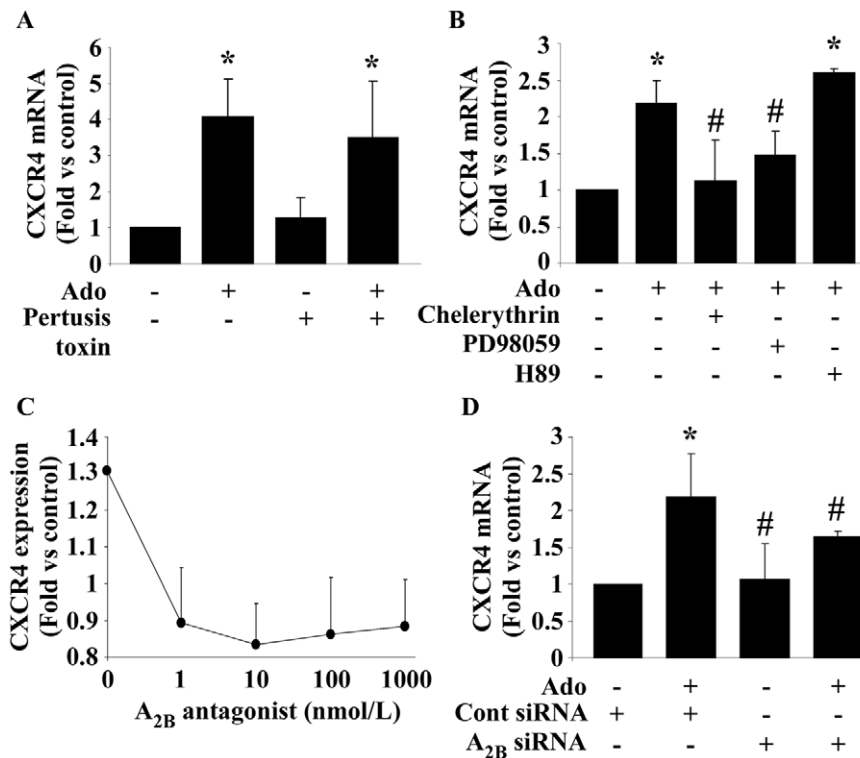


Figure 4. Identification of Ado receptors implicated in the effect of Ado on CXCR4. A. Pertussis toxin did not affect CXCR4 expression. Pertussis toxin (100 ng/mL) was added to the cells 30 min before Ado and CXCR4 expression was measured by PCR after 2 hours. * $P < 0.01$ vs control ($n = 5$). B. Chelerythrin blocked the increase of CXCR4 expression induced by Ado. EPC were pre-treated with 10 $\mu\text{mol/L}$ H89, PD98059 or chelerythrin for 15 min before 10 $\mu\text{mol/L}$ Ado treatment for 4 hours. CXCR4 expression was measured by PCR. * $P < 0.001$ vs control. # $P < 0.01$ vs Ado ($n = 3$). C. A_{2B} antagonist inhibited CXCR4 over expression induced by Ado. EPC were pre-incubated for 15 min with increasing concentrations of the A_{2B} antagonist (MRS1754) or vehicle before incubation with 10 $\mu\text{mol/L}$ Ado for 6 hours. CXCR4 expression was measured by flow cytometry. $P = 0.02$ ($n = 3$). D. A_{2B} gene silencing inhibited CXCR4 expression. CXCR4 mRNA expression was measured in EPC transfected with A_{2B} siRNA or control siRNA for 24 to 48 hours and treated with 10 $\mu\text{mol/L}$ Ado for 4 hours. A_{2B} siRNA inhibited the increase of CXCR4 expression induced by Ado. * $P < 0.01$ vs control. # $P < 0.05$ vs Ado + control siRNA ($n = 3$). doi:10.1371/journal.pone.0054135.g004

(Fig. 1C). Inhibition of de novo mRNA transcription with actinomycin D abolished this increase (Fig. 1D). Degradation over time of CXCR4 mRNA in actinomycin D pre-treated EPC was not modified by Ado treatment ($P = 0.44$, two-way ANOVA) suggesting that Ado does not affect CXCR4 mRNA stability (Fig. 1E). Together, these data show that Ado enhances CXCR4 mRNA expression in EPC through up-regulation of CXCR4 transcription.

Since EPC are derived from PBMCs and monocytes, we tested whether adenosine modified CXCR4 expression in primary human monocytes. No significant effect was found (data not show).

Adenosine increases CXCR4 expression at the cell surface

Cell surface expression of CXCR4 was assessed by flow cytometry. As shown in Figure 2A, we observed a clear shift between the isotype control and the specific anti-CXCR4 antibody, indicating that EPC express CXCR4. A moderate increase of staining was noticed after Ado treatment (Fig. 2A). Time-course experiments revealed a maximal effect of Ado after 6 hours (23% increase, $P < 0.001$) (Fig. 2B). This effect was dose-dependent and reached statistical significance at 1 $\mu\text{mol/L}$ (Fig. 2C). These results show that physiological concentrations of Ado induce a moderate increase of CXCR4 expression at the surface of EPC.

Characterization of Ado receptor expression in EPC

Expression of the 4 Ado receptors in EPC was as follows: $A_3 > A_{2A} > A_{2B}$. The A₁ receptor was not detected (Fig. 3A). Interestingly, expression of Ado receptors was regulated by Ado itself. A_{2A} and A_{2B} receptors were more than two-fold up-regulated by Ado whereas A₃ receptor was down-regulated. Maximal effects were observed 2–4 hours after administration of Ado (Fig. 3B–D).

The A_{2B} receptor mediates the effect of Ado on CXCR4

Several approaches were used to identify the subtype of Ado receptor(s) involved in the increase of CXCR4 expression. First, inhibition of G_i protein signaling was induced using pertussis toxin (Fig. 4A). This inhibition did not affect the increase of CXCR4 mRNA by Ado. Since A₁ and A₃ receptors are coupled to G_i proteins, this observation excludes the implication of these 2 receptors in the effect of Ado on CXCR4. Secondly, we used pharmaceutical inhibitors of downstream signaling pathways of the A_{2A} and A_{2B} receptors, ERK and PKC, respectively (Fig. 4B). The PKC inhibitor chelerythrin prevented the increase of CXCR4 induced by Ado, suggesting the involvement of the A_{2B} receptors. The partial effect of the MEK inhibitor PD98059 suggested some contribution of the A_{2A} receptor. This contribution might involve the ERK pathway and not the PKA pathway downstream the A_{2A}

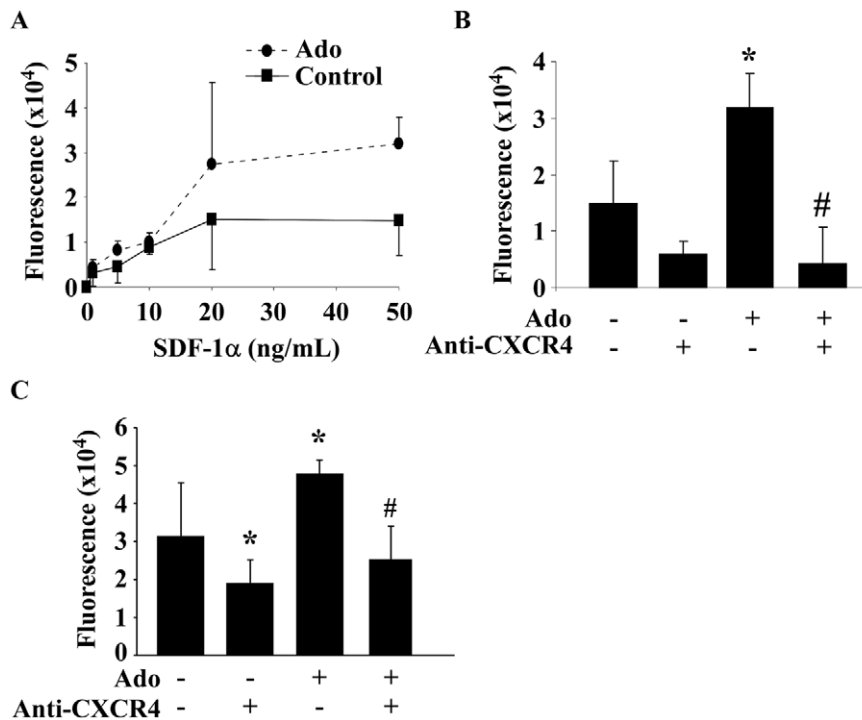


Figure 5. Adenosine enhances the migration of EPC. EPC were treated by 10 $\mu\text{mol/L}$ Ado for 6 hours before transfer to the top of a Boyden chamber. The bottom of the chamber was filled with culture medium containing either recombinant SDF-1 α (A and B) or conditioned medium from cardiac fibroblasts (C). The amount of cells that migrated through the membrane was assessed by fluorescence after 16 hours. A. SDF-1 α induced EPC migration and Ado enhanced this effect ($P=0.02$, two-way ANOVA, $n=3$). B. Blocking CXCR4 with a neutralizing antibody (10 $\mu\text{g/mL}$) for one hour before exposure to 50 ng/mL SDF-1 α for 16 hours in a Boyden chamber inhibited the migration in both untreated and Ado-treated cells. * $P<0.05$ vs control. # $P<0.01$ vs Ado ($n=3$). C. Ado enhances the migration of EPC induced by conditioned medium from cardiac fibroblasts. EPC were treated by 10 $\mu\text{mol/L}$ Ado or vehicle for 6 hours before transfer to the top of a Boyden chamber. The bottom of the chamber was filled with cell-free conditioned medium from fibroblasts. In some samples, EPC were pre-incubated for 1 hour with anti-CXCR4 blocking antibodies before transfer to the chambers. The amount of EPC that migrated through the membrane was assessed by fluorescence after 16 hours. * $P<0.01$ vs control. # $P<0.001$ vs Ado ($n=7$).

doi:10.1371/journal.pone.0054135.g005

receptor, since blockade of the latter pathway by H89 did not affect CXCR4 expression. Of note, none of the inhibitors used alone affected CXCR4 expression (not shown). To confirm these results, we blocked the A_{2B} receptor using the specific antagonist MRS1754 (Fig. 4C). A robust decrease of CXCR4 expression was observed. Finally, down-regulation of A_{2B} receptor using siRNA inhibited the effect of Ado on CXCR4 (Fig. 4D). A potential toxic effect of A_{2B} siRNA, which could be responsible for the lack of response of the cells to Ado, was ruled out using flow cytometry experiments (data not shown). Taken together, these results show that activation of the A_{2B} receptor up-regulates CXCR4 expression.

Adenosine stimulates EPC chemotaxis

To evaluate the effect of Ado on EPC migration, EPC were treated with 10 $\mu\text{mol/L}$ Ado for 6 hours and exposed to recombinant SDF-1 α (0 to 100 ng/mL) in a Boyden chamber. SDF-1 α dose-dependently enhanced EPC migration and pre-treatment with Ado amplified this effect ($P=0.02$; Fig. 5A). The migration was inhibited by CXCR4 blocking antibodies in both untreated and Ado-treated cells (Fig. 5B).

Cardiac fibroblasts represent a major source of SDF1 α in the myocardium. We observed that treatment of EPC with 10 $\mu\text{mol/L}$ Ado enhanced their migration towards a conditioned medium from fibroblasts. This increase was abolished when cells were pre-incubated with anti-CXCR4 antibodies (Fig. 5C). These data

show that Ado improves the migration of EPC, at least through up-regulation of CXCR4 expression.

Role of miR-150 in the effect of adenosine on CXCR4

Following experiments were performed under serum starvation (0.1% BSA) and oxygen deprivation (1% O_2). As observed in normal conditions, Ado up-regulated CXCR4 mRNA expression (Fig. 6A). This was paralleled by decreased miR-150 (Fig. 6B). A luciferase assay was used to verify the ability of miR-150 to bind CXCR4. In HEK293T cells transfected with a reported plasmid containing the 3' UTR of the CXCR4 gene, we observed an inhibition of luciferase activity upon administration of pre-miR-150 (Fig. 6C).

Transfection of cells with anti-miR-150 to inhibit miR-150 expression had no effect on CXCR4 expression or migration towards SDF-1 α (Fig. 6D–E). Associating anti-miR-150 with Ado significantly increased CXCR4 expression, compared to either treatment alone (Fig. 6D). However, anti-miR-150 did not enhance the effect of Ado on cell migration (Fig. 6E). Increasing the expression of miR-150 by addition of pre-miR-150 did not affect CXCR4 expression, but blunted the increase of CXCR4 expression induced by Ado (Fig. 6F). In migration assay, pre-miR-150 had no significant effect (Fig. 6G). These results suggest that, in EPC subjected to ischemic conditions, the increase of CXCR4 expression by Ado is, at least in part, controlled by miR-150.

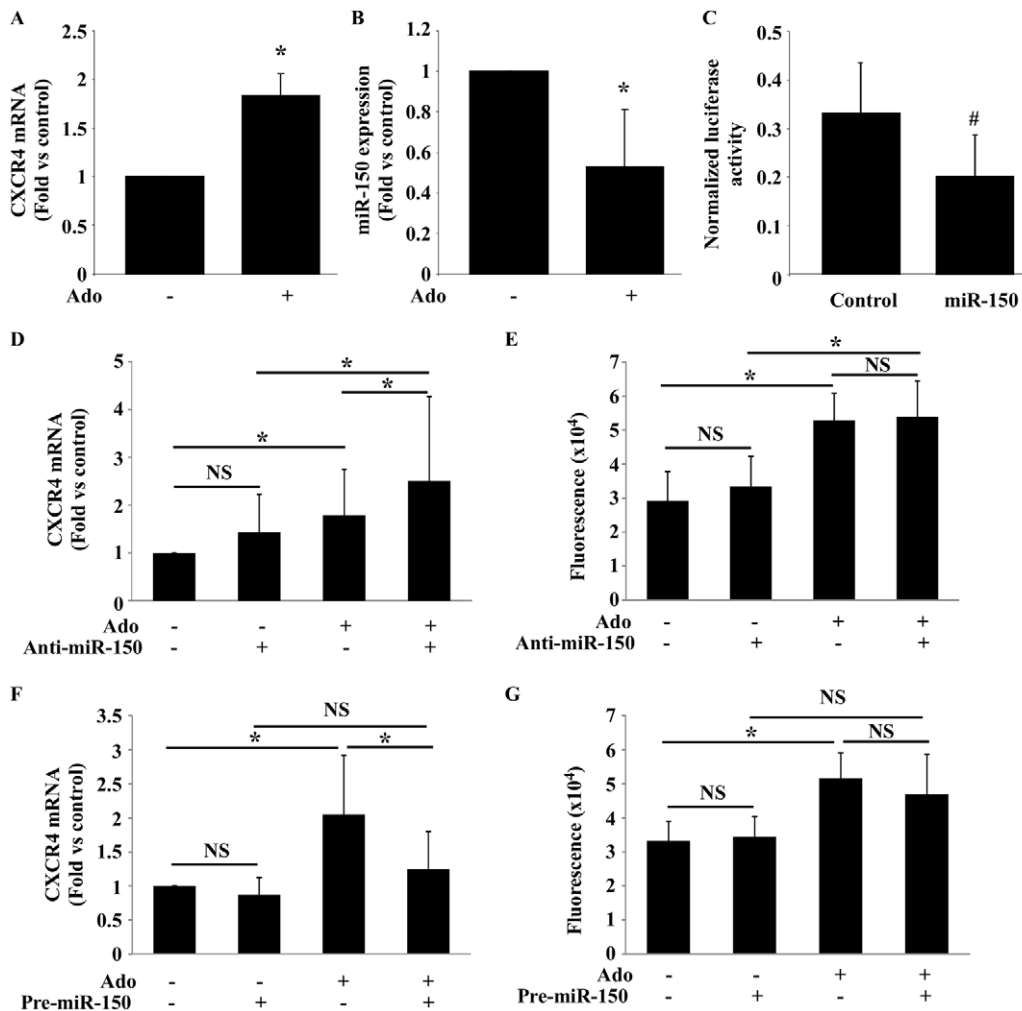


Figure 6. Role of miR-150 in the effect of adenosine on CXCR4. A–B. EPC were treated with 10 μ mol/L Ado before incubation for 4 hours in ischemic conditions (0.1% BSA instead of 20% SVF and 1% O₂). CXCR4 and miR-150 expression was evaluated by PCR. Results were normalized to β -actin and U6, respectively. Ado increased CXCR4 expression (A) and decreased miR-150 expression (B). * $P < 0.05$ vs control ($n = 5$). C. HEK-293T cells were co-transfected with 10 ng of a reporter plasmid containing the 3' UTR of CXCR4 and 30 nmol/L of either pre-miR control (control) or pre-miR-150 (miR-150). miR 150 decreased luciferase activity. # $P < 0.001$ vs control. Data are from 3 independent experiments performed in triplicate. D–G. EPC were transfected with 30 nmol/L of anti-miR-150 or pre-miR-150, or respective controls, during 24 hours, and then treated with 10 μ mol/L of adenosine during 6 hours in ischemic conditions. (D–F) CXCR4 expression was measured by PCR. (E–G) Cell migration towards recombinant SDF-1 α was assessed in a Boyden chamber after 16 hours. * $P < 0.05$ ($n = 5$). NS: not significant. doi:10.1371/journal.pone.0054135.g006

Adenosine improves EPC recruitment to the infarcted heart and angiogenesis

The effect of Ado on EPC recruitment to the heart was evaluated in rats. MI was induced in 23 rats through ligation of the LAD coronary artery. LAD-ligated rats received twice daily injections of NaCl (control group, $n = 7$), or the stable analog of Ado 2-Chloroadenosine (CADO, $n = 8$), or CADO with the non-selective antagonist of Ado receptor 8-SPT ($n = 8$). Treatments were given for 2 months, starting 7 days after coronary ligation. Cardiac sections were stained for CD31, CXCR4 and ALDH2. In CADO-treated rats, all 3 markers were markedly enhanced in the infarct border zone. This effect was blunted when the effect of Ado was blocked by 8-SPT (Fig. 7A).

Finally, we assessed whether this enhanced recruitment of EPC resulted in improved angiogenesis. CADO-treated rats exhibited an enhanced number of blood vessels within the border zone, indicating that EPC recruitment indeed favored revascularization

of the infarct border zone (+65% when compared to controls, $P = 0.03$) (Fig. 7B). This angiogenic effect was prevented by 8-SPT.

Therefore, our results clearly show that Ado stimulates EPC recruitment and angiogenesis in the infarcted heart.

Discussion

In the present study, the effect of Ado on the migration of EPC was investigated. First, we observed that Ado modulates the expression of several chemokines and chemokine receptors in EPC cultured in vitro. In particular, CXCR4 was up-regulated and this was associated with stimulation of cell migration. Then, we demonstrated that Ado improves the recruitment of EPC to the ischemic heart and this is accompanied by enhanced vascularization.

Microarrays were used to investigate the effects of Ado on EPC at a genome-wide level. Ado regulated the expression of several members of the chemokine family. Since CXCR4 was one of the

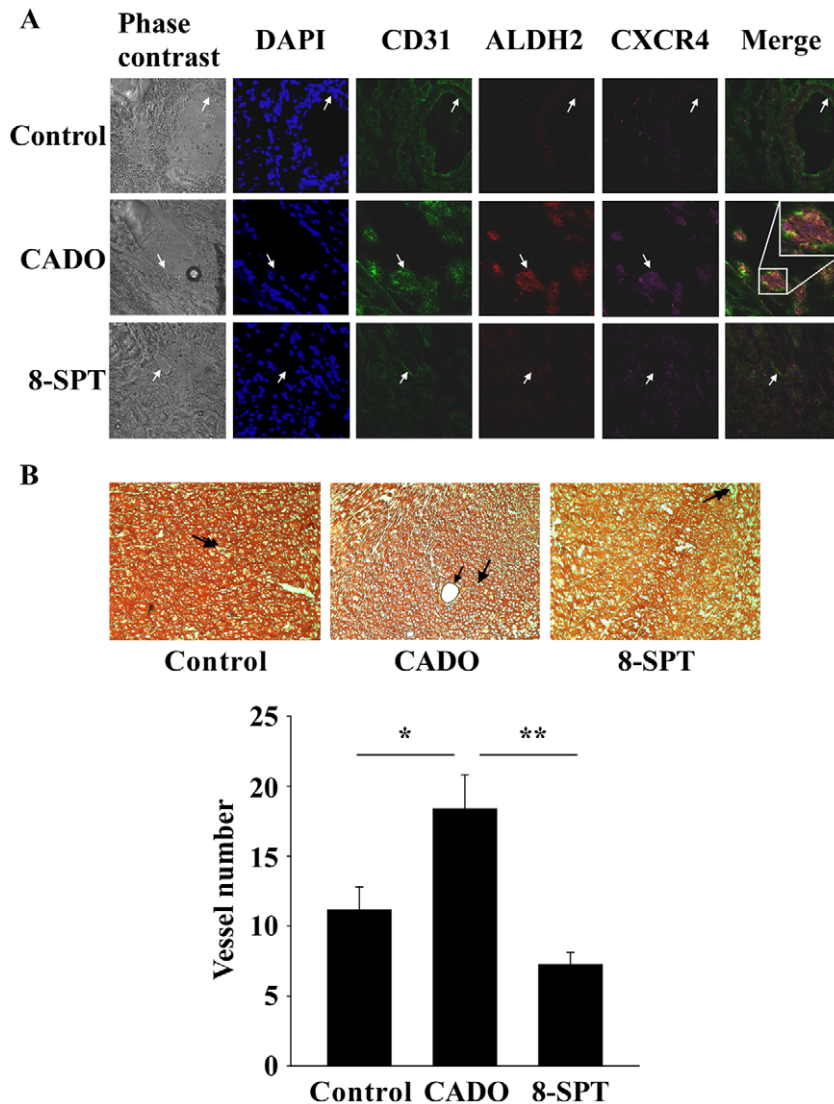


Figure 7. CADO treatment improves EPC recruitment to the heart and angiogenesis. LAD-occluded rats were treated with vehicle (n=7), CADO (n=8) or CADO +8-SPT (n=8) as described in details in Methods section. After sacrifice, cardiac sections were performed and used for histological stainings. A. Immunostainings of CD31 (green), ALDH2 (red) and CXCR4 (pink) in cardiac sections obtained in the border zone, 2 months after MI. Nuclei are stained in blue by DAPI. Merge: overlay of CD31, ALDH2 and CXCR4 stainings. Arrows indicate blood vessel membrane. Representative pictures are shown. Magnification: $\times 400$. B. Upper panel: representative cardiac sections 2 months after MI showing the border zone stained with hematoxylin and eosin. Arrows indicate blood vessels. Lower panel: quantitative analysis of the number of vessels in the border zone of the infarct. Magnification: $\times 100$. Results are mean \pm SEM. * $P < 0.05$; ** $P < 0.001$. doi:10.1371/journal.pone.0054135.g007

most affected and is the major regulator of EPC chemotaxis after binding of SDF-1 α , we focused our investigations on this receptor.

Up-regulation of CXCR4 mRNA expression by Ado was significant (3-fold increase). This up-regulation was absent in monocytes, suggesting that Ado does not induce an uncontrolled inflammatory response which could be consecutive to the recruitment of several hematopoietic cell types.

The increase of CXCR4 expression at the cell surface was modest, but highly reproducible ($P < 0.001$). This is probably a consequence of receptor internalization. Similar increases of CXCR4 at the cell surface have been shown to be sufficient to stimulate EPC migration [28]. Therefore, we were not surprised to observe that up-regulation of CXCR4 expression by Ado stimulates the migration of EPC, both towards recombinant

SDF-1 α and conditioned medium from fibroblasts. Fibroblasts are a major source of SDF-1 α in the heart.

In the current study, the increase of CXCR4 expression was significant at a dose of 1 $\mu\text{mol/L}$ of Ado, a dose that can easily be encountered extracellularly in the ischemic heart [29]. Indeed, in conditions of ischemia, Ado can accumulate in the heart to 100 $\mu\text{mol/L}$ [29]. Our results are therefore physiologically relevant.

We profiled the expression of Ado receptors on EPC, and observed significant regulation of their expression by Ado itself. Adenosine receptors appear to be tightly regulated. In inflammatory cells for instance, we and others have shown a high level of regulation following activation [14–16,30,31]. In addition to transcriptional control, Ado receptors are also regulated by internalization [32]. In EPC, Ado increased the expression of

A₂-type receptors. Mechanistic studies using pharmacological agents and RNA interference suggested that the A_{2B} receptor is responsible for the effect of Ado on CXCR4. This is consistent with the reported over-expression of CXCR4 through A_{2A} and A_{2B} receptors in human carcinoma cells [33]. Our findings suggest that drugs having high affinity for the A_{2B} receptor may have a significant effect on EPC recruitment. However, from our data, some contribution of the A_{2A} receptor on CXCR4 and EPC cannot totally be excluded. The A_{2A} receptor is involved in EPC mobilisation and angiogenesis in a wound model [34]. In contrast, knock-out mice for the A_{2B} receptor showed an over-expression of CXCR4 on leukocytes [35]. This discrepancy with our results and others' [33] may be related to species differences. Indeed, it is known that Ado receptors activity vary with species [36]. Our experiments were performed with human cells.

To validate our *in vitro* observations in an *in vivo* setting, we analysed EPC recruitment in rats subjected to MI and supplemented with CADO and/or 8-SPT. We observed an increase of CXCR4 staining in cardiac sections from CADO-treated rats. This increase was paralleled by an increase of ALDH2 staining. A high level of ALDH2 activity has been described in EPC [37]. Transplantation of bone marrow cells with high ALDH2 activity improves revascularisation of ischemic limbs and cord blood progenitors with high ALDH2 activity improve vascular density after acute MI [38,39]. The increased expression of ALDH2 in CADO-treated rats indicates a stimulation of the recruitment of EPC with high regenerative potential. In LAD-occluded control rats, we did not observe significant ALDH2 and CXCR4 stainings, suggesting that EPC recruitment is weak in these animals. In addition, administration of 8-SPT blunted the effect of CADO. Therefore, our data show that Ado is a potent stimulus of EPC recruitment to the heart.

The recruitment of EPC to the heart of CADO-treated rats was associated with an enhanced expression of CD31, an endothelial marker, and blood vessel number. This observation is consistent with a stimulation of the revascularization of the ischemic heart by CADO. However, whether this is a direct consequence of EPC recruitment following CADO administration is unclear. Indeed, Ado is pro-angiogenic and indirect effects, through stimulation of the production of vascular endothelial growth factor by inflammatory cells for instance [16], may also be involved. Of note, EPC failed to produce vascular endothelial growth factor, even upon treatment with Ado (not shown). Tano et al. [11] showed that ischemia inhibits the expression of miR-150 in bone marrow derived mononuclear cells and activates its target gene CXCR4. We therefore investigated whether Ado could regulate CXCR4 expression through modulation of miR-150. In these experiments, EPC were cultured under ischemic conditions (i.e. serum and oxygen deprivation) to mimic cardiac stress. In parallel to an increase of CXCR4 expression, we observed a decrease of miR-150 when cells were treated with Ado. Since CXCR4 is a known target of miR-150 [11], we sought to verify this mechanism in our system. Using a luciferase gene reporter assay, we were able to show that miR-150 indeed binds CXCR4 and thereby decreases

CXCR4 expression. In addition, in experiments with actinomycin D, which blocks RNA transcription, we were able to show that Ado up-regulates CXCR4 transcription. Overall, it appears that up-regulation of CXCR4 expression by Ado may be controlled by multiple pathways involving both transcription of CXCR4 and of miR-150.

Blocking endogenous miR-150 with anti-miR-150 or enhancing the pool of intracellular miR-150 by transfection of pre-miR-150 did not alter CXCR4 expression per se. Interestingly, down-regulation of miR-150 by anti-miR-150 potentiated the increase of CXCR4 expression by Ado, and, on the opposite, up-regulation of miR-150 by pre-miR-150 prevented the increase of CXCR4 expression by Ado. These data suggest that, under ischemic conditions, Ado enhances CXCR4 expression through down-regulation of miR-150. However, modulation of miR-150 expression by anti-miR-150 or pre-miR-150 did not affect cell migration. This may be related to our recent observation that EPC migration is controlled not only by CXCR4/SDF-1 α , but also by CCR1/MCP-3 [40].

So far, very few reports have studied miR-150 in stem cells. miRNA profiles have identified miR-150 in EPC, human umbilical vein endothelial cells, and human coronary artery endothelial cells [41]. Our results confirmed the expression of miR-150 in EPC and suggested that this miRNA may be a potential target to enhance the regenerative capacity of these cells. However, while miR-150 appears to slow EPC migration in our study, a previous study reported that miR-150, secreted by monocytes, enhances the migration of human microvascular endothelial cells [42]. Interrogation of web-accessible databases identified over 400 predicted targets of miR-150. Additional studies are required to test whether miR-150 affects the expression of other genes regulating the functionality of EPC. Ultimately, the usefulness of miR-150 as a target for cardiac repair will have to be determined in animal models.

In conclusion, we have shown that Ado stimulates the migration of EPC. *In vitro*, the mechanism involves A_{2B} receptor activation, up-regulation of CXCR4 expression and down-regulation of miR-150. This effect is associated with enhanced angiogenesis in the ischemic heart. These findings suggest that A_{2B} agonists should be tested in models of cardiac repair.

Acknowledgments

We thank Bernadette Leners, Laurent Quennery and Céline Jeanty for expert technical assistance. The help of Nicolaas Brons and Wim Ammerlaan with flow cytometry are acknowledged. The authors acknowledge the contribution of Isabelle Ernens.

Author Contributions

Conceived and designed the experiments: MRT YD. Performed the experiments: MRT EG MB FM FL CN. Analyzed the data: MRT MB LZ PYM YD. Wrote the paper: MRT YD DW. Critically reviewed all sections of the text for important intellectual content: MRT EG MB FL CN LZ FM PYM YD DW.

References

- Heidenreich PA, Trogon JG, Khavjou OA, Butler J, Dracup K, et al. (2011) Forecasting the Future of Cardiovascular Disease in the United States. *Circulation* 123: 933–944.
- Siddique A, Shantsila E, Lip GY, Varma C (2010) Endothelial progenitor cells: what use for the cardiologist? *J Angiogenesis Res* 2: 6.
- Raffi S, Lyden D (2003) Therapeutic stem and progenitor cell transplantation for organ vascularization and regeneration. *Nat Med* 9: 702–712.
- Tongers J, Losordo DW, Landmesser U (2011) Stem and progenitor cell-based therapy in ischaemic heart disease: promise, uncertainties, and challenges. *Eur Heart J* 32: 1197–1206.
- Abbott JD, Huang Y, Liu D, Hickey R, Krause DS, et al. (2004) Stromal cell-derived factor-1 α plays a critical role in stem cell recruitment to the heart after myocardial infarction but is not sufficient to induce homing in the absence of injury. *Circulation* 110: 3300–3305.
- Peled A, Petit I, Kollet O, Magid M, Ponomaryov T, et al. (1999) Dependence of human stem cell engraftment and repopulation of NOD/SCID mice on CXCR4. *Science* 283: 845–848.
- Ceradini DJ, Kulkarni AR, Callaghan MJ, Tepper OM, Bastidas N, et al. (2004) Progenitor cell trafficking is regulated by hypoxic gradients through HIF-1 induction of SDF-1. *Nat Med* 10: 858–864.

8. Lapidot T, Dar A, Kollet O (2005) How do stem cells find their way home? *Blood* 106: 1901–1910.
9. Walter DH, Haendeler J, Reinhold J, Rochwalsky U, Seeger F, et al. (2005) Impaired CXCR4 signaling contributes to the reduced neovascularization capacity of endothelial progenitor cells from patients with coronary artery disease. *Circ Res* 97: 1142–1151.
10. Oh BJ, Kim DK, Kim BJ, Yoon KS, Park SG, et al. (2010) Differences in donor CXCR4 expression levels are correlated with functional capacity and therapeutic outcome of angiogenic treatment with endothelial colony forming cells. *Biochem Biophys Res Commun* 398: 627–633.
11. Tano N, Kim HW, Ashraf M (2011) microRNA-150 Regulates Mobilization and Migration of Bone Marrow-Derived Mononuclear Cells by Targeting Cxcr4. *PLoS One* 6: e23114.
12. Fredholm BB, Ijzerman AP, Jacobson KA, Linden J, Muller CE (2011) International Union of Basic and Clinical Pharmacology. LXXXI. Nomenclature and Classification of Adenosine Receptors—An Update. *Pharmacol Rev* 63: 1–34.
13. Ryzhov S, Solenkova NV, Goldstein AE, Lamparter M, Fleener T, et al. (2008) Adenosine receptor-mediated adhesion of endothelial progenitors to cardiac microvascular endothelial cells. *Circ Res* 102: 356–363.
14. Ernens I, Rouy D, Velot E, Devaux Y, Wagner DR (2006) Adenosine inhibits matrix metalloproteinase-9 secretion by neutrophils: implication of A2a receptor and cAMP/PKA/Ca2+ pathway. *Circ Res* 99: 590–597.
15. Velot E, Haas B, Leonard F, Ernens I, Rolland-Turner M, et al. (2008) Activation of the adenosine-A3 receptor stimulates matrix metalloproteinase-9 secretion by macrophages. *Cardiovasc Res* 80: 246–254.
16. Ernens I, Leonard F, Vausort M, Rolland-Turner M, Devaux Y, et al. (2010) Adenosine up-regulates vascular endothelial growth factor in human macrophages. *Biochem Biophys Res Commun* 392: 351–356.
17. Leonard F, Devaux Y, Vausort M, Ernens I, Rolland-Turner M, et al. (2011) Adenosine modifies the balance between membrane and soluble forms of Flt-1. *J Leukoc Biol* 90: 199–204.
18. Azuaje F, Leonard F, Rolland-Turner M, Devaux Y, Wagner DR (2011) Proof-of-principle investigation of an algorithmic model of adenosine-mediated angiogenesis. *Theor Biol Med Model* 8: 7.
19. Wagner DR, Combes A, McTiernan C, Sanders VJ, Lemster B, et al. (1998) Adenosine inhibits lipopolysaccharide-induced cardiac expression of tumor necrosis factor- α . *Circ Res* 82: 47–56.
20. Wagner DR, Kubota T, Sanders VJ, McTiernan CF, Feldman AM (1999) Differential regulation of cardiac expression of IL-6 and TNF- α by A2- and A3-adenosine receptors. *Am J Physiol* 276: H2141–2147.
21. Wagner DR, McTiernan C, Sanders VJ, Feldman AM (1998) Adenosine inhibits lipopolysaccharide-induced secretion of tumor necrosis factor- α in the failing human heart. *Circulation* 97: 521–524.
22. Azuaje FJ, Wang H, Zheng H, Leonard F, Rolland-Turner M, et al. (2011) Predictive integration of gene functional similarity and co-expression defines treatment response of endothelial progenitor cells. *BMC Syst Biol* 5: 46.
23. Chavakis E, Carmona G, Urbich C, Gottig S, Henschler R, et al. (2008) Phosphatidylinositol-3-Kinase- γ Is Integral to Homing Functions of Progenitor Cells. *Circ Res* 102: 942–949.
24. Devaux Y, Azuaje F, Vausort M, Yvorra C, Wagner DR (2010) Integrated protein network and microarray analysis to identify potential biomarkers after myocardial infarction. *Funct Integr Genomics* 10: 329–337.
25. Le Brigand K, Russell R, Moreilhon C, Rouillard JM, Jost B, et al. (2006) An open-access long oligonucleotide microarray resource for analysis of the human and mouse transcriptomes. *Nucleic Acids Res* 34: e87.
26. Goldman S, Raya TE (1995) Rat infarct model of myocardial infarction and heart failure. *J Card Fail* 1: 169–177.
27. Pfeffer MA, Pfeffer JM, Fishbein MC, Fletcher PJ, Spadaro J, et al. (1979) Myocardial infarct size and ventricular function in rats. *Circ Res* 44: 503–512.
28. Mause SF, Ritzel E, Liehn EA, Hristov M, Bidzhekov K, et al. (2010) Platelet microparticles enhance the vasoregenerative potential of angiogenic early outgrowth cells after vascular injury. *Circulation* 122: 495–506.
29. Van Belle H, Goossens F, Wynants J (1987) Formation and release of purine catabolites during hypoperfusion, anoxia, and ischemia. *Am J Physiol* 252: H886–893.
30. Murphree LJ, Sullivan GW, Marshall MA, Linden J (2005) Lipopolysaccharide rapidly modifies adenosine receptor transcripts in murine and human macrophages: role of NF- κ B in A(2A) adenosine receptor induction. *Biochem J* 391: 575–580.
31. Ramanathan M, Luo W, Csoka B, Hasko G, Lukashev D, et al. (2009) Differential regulation of HIF-1 α isoforms in murine macrophages by TLR4 and adenosine A2A receptor agonists. *J Leukoc Biol* 86: 681–689.
32. Klaasse EC, Ijzerman AP, de Grip WJ, Beukers MW (2008) Internalization and desensitization of adenosine receptors. *Purinergic Signal* 4: 21–37.
33. Richard CL, Tan EY, Blay J (2006) Adenosine upregulates CXCR4 and enhances the proliferative and migratory responses of human carcinoma cells to CXCL12/SDF-1 α . *Int J Cancer* 119: 2044–2053.
34. Montesinos MC, Shaw JP, Yee H, Shamamian P, Cronstein BN (2004) Adenosine A(2A) receptor activation promotes wound neovascularization by stimulating angiogenesis and vasculogenesis. *Am J Pathol* 164: 1887–1892.
35. Yang D, Koupenova M, McCrann DJ, Kopeikina KJ, Kagan HM, et al. (2008) The A2b adenosine receptor protects against vascular injury. *Proc Natl Acad Sci U S A* 105: 792–796.
36. Fredholm BB, AP IJ, Jacobson KA, Klotz KN, Linden J (2001) International Union of Pharmacology. XXV. Nomenclature and classification of adenosine receptors. *Pharmacol Rev* 53: 527–552.
37. Povsic TJ, Zavodni KL, Kelly FL, Zhu S, Goldschmidt-Clermont PJ, et al. (2007) Circulating progenitor cells can be reliably identified on the basis of aldehyde dehydrogenase activity. *J Am Coll Cardiol* 50: 2243–2248.
38. Capoccia BJ, Robson DL, Levac KD, Maxwell DJ, Hohm SA, et al. (2009) Revascularization of ischemic limbs after transplantation of human bone marrow cells with high aldehyde dehydrogenase activity. *Blood* 113: 5340–5351.
39. Sondergaard CS, Hess DA, Maxwell DJ, Weinheimer C, Rosova I, et al. (2010) Human cord blood progenitors with high aldehyde dehydrogenase activity improve vascular density in a model of acute myocardial infarction. *J Transl Med* 8: 24.
40. Bousquenaud M, Schwartz C, Leonard F, Rolland-Turner M, Wagner D, et al. (2012) Monocyte chemotactic protein 3 is a homing factor for circulating angiogenic cells. *Cardiovasc Res* 94: 519–525.
41. Fleissner F, Jazbutyte V, Fiedler J, Gupta SK, Yin X, et al. (2010) Asymmetric Dimethylarginine Impairs Angiogenic Progenitor Cell Function in Patients With Coronary Artery Disease Through a MicroRNA-21-Dependent Mechanism. *Circ Res* 107: 138–143.
42. Zhang Y, Liu D, Chen X, Li J, Li L, et al. (2010) Secreted Monocytic miR-150 Enhances Targeted Endothelial Cell Migration. *Molecular Cell* 39: 133–144.