



HAL
open science

Saturation of energetic-particle-driven geodesic acoustic modes due to wave–particle nonlinearity

A. Biancalani, I. Chavdarovski, Z. Qiu, A. Bottino, D. Del Sarto, A. Ghizzo, Özgür D. Gürçan, Pierre Morel, I. Novikau

► **To cite this version:**

A. Biancalani, I. Chavdarovski, Z. Qiu, A. Bottino, D. Del Sarto, et al.. Saturation of energetic-particle-driven geodesic acoustic modes due to wave–particle nonlinearity. *Journal of Plasma Physics*, 2017, 83 (6), pp.725830602. 10.1017/S0022377817000976 . hal-01791835

HAL Id: hal-01791835

<https://hal.univ-lorraine.fr/hal-01791835>

Submitted on 14 May 2018

HAL is a multi-disciplinary open access archive for the deposit and dissemination of scientific research documents, whether they are published or not. The documents may come from teaching and research institutions in France or abroad, or from public or private research centers.

L'archive ouverte pluridisciplinaire **HAL**, est destinée au dépôt et à la diffusion de documents scientifiques de niveau recherche, publiés ou non, émanant des établissements d'enseignement et de recherche français ou étrangers, des laboratoires publics ou privés.

Saturation of energetic-particle-driven geodesic acoustic modes due to wave-particle nonlinearity

A. Biancalani^{1†}, I. Chavdarovski¹, Z. Qiu², A. Bottino¹, D. Del Sarto³, A. Ghizzo³, Ö Gürçan⁴, P. Morel⁴ and I. Novikau¹

¹Max-Planck Institute for Plasma Physics, 85748 Garching, Germany

²Institute for Fusion Theory and Simulation and Department of Physics, Zhejiang University, 310027 Hangzhou, People's Republic of China

³Institut Jean Lamour- UMR 7198, University of Lorraine, BP 239 F-54506 Vandoeuvre les Nancy, France

⁴LPP, CNRS, École polytechnique, UPMC Univ Paris 06, Univ. Paris-Sud, Observatoire de Paris, Université Paris-Saclay, Sorbonne Universités, PSL Research University, 91128 Palaiseau, France

(Received xx; revised xx; accepted xx)

The nonlinear dynamics of energetic-particle (EP) driven geodesic acoustic modes (EGAM) is investigated here. A numerical analysis with the global gyrokinetic particle-in-cell code ORB5 is performed, and the results are interpreted with the analytical theory, in close comparison with the theory of the beam-plasma instability. Only axisymmetric modes are considered, with a nonlinear dynamics determined by wave-particle interaction. Quadratic scalings of the saturated electric field with respect to the linear growth rate are found for the case of interest. As a main result, the formula for the saturation level is provided. Near the saturation, we observe a transition from adiabatic to non-adiabatic dynamics, i.e., the frequency chirping rate becomes comparable to the resonant EP bounce frequency. The numerical analysis is performed here with electrostatic simulations with circular flux surfaces, and kinetic effects of the electrons are neglected.

1. Introduction

Two main issues related to magnetic confinement fusion are the turbulent transport, and the dynamics of energetic particles (EP), produced by fusion reactions, or injected for heating purposes. Zonal (i.e. axisymmetric) electric fields are observed to interact with turbulence in tokamaks, in the form of zero-frequency zonal flows (ZF) Hasegawa *et al.* (1979); Rosenbluth & Hinton (1998); Diamond *et al.* (2005) and finite-frequency geodesic acoustic modes (GAM) Winsor *et al.* (1968); Zonca & Chen (2008). Geodesic acoustic modes, due to their finite frequency, can also interact with EP via inverse Landau damping, leading to EP-driven GAM (EGAM) given that EP drive is sufficient to overcome the threshold condition induced by GAM Landau damping and continuum damping Fu (2008); Qiu *et al.* (2010, 2011, 2012); Zarzoso *et al.* (2012); Wang *et al.* (2013); Girardo *et al.* (2014); Miki & Idomura (2015); Wang *et al.* (2015); Qu *et al.* (2016); Sasaki *et al.* (2016, 2017). The mechanism of EGAM excitation can be understood with the analogy to the well known beam plasma instability, where a supra-thermal electron

† Email address for correspondence: www2.ipp.mpg.de/~biancala

beam interacts with a 1D plasma in a strong axial magnetic field, and the mode is driven unstable by inverse Landau damping Qiu *et al.* (2011); Berk & Zhou (2010). The similarity lies in the low frequency ($\omega \ll \Omega_i$, with Ω_i being the cyclotron frequency) and toroidally symmetric mode structure of the GAM, which leads to the conservation of μ and P_ϕ , i.e. respectively the magnetic momentum and the toroidal angular momentum. As a result, the EGAM dynamics is quasi-1D in (J, θ) space (with J being here the action conjugate to the poloidal angle θ). This quasi-1D feature of the EGAM determines not only the linear excitation, but also the nonlinear dynamics. Understanding the dynamics of EGAMs is crucial due to their interaction with turbulence, which can modify the turbulent transport Zarzoso *et al.* (2013, 2017). Moreover, a strong nonlinear interaction of EGAM with EP is observed in tokamaks Lauber (2014); Horváth *et al.* (2016), leading potentially to a strong redistribution of the EP in phase space.

In order to predict the importance of the interaction of EGAMs with turbulence and with EP, it is important to understand their nonlinear saturation mechanisms. One of the reasons of saturation for EGAMs is the wave-particle nonlinear interaction. In this case, the saturation occurs due to the EP nonlinear redistribution in phase space, and the consequent decrease of the energy exchange between the EP and the EGAM. The wave-particle nonlinear dynamics of EGAMs has been investigated analytically in the framework of the gyrokinetic (GK) theory in Qiu *et al.* (2011), where the analogy with the beam-plasma instability has been pointed out, and numerically with the hybrid MHD-GK code MEGA in Wang *et al.* (2013), where in particular the frequency chirping due to the creation of structures in the EP phase space has been studied. Another possible reason of EGAM saturation is the wave-wave coupling. This can occur for an EGAM interacting with another EGAM and generating zonal side-bands, or for an EGAM with non-zonal modes, e.g., turbulence. The wave-wave nonlinear dynamics of EGAMs has been studied analytically in Ref. Qiu *et al.* (2017), focusing in particular on the EGAM self-coupling. Numerical investigations of the dynamics of EGAMs with wave-particle and wave-wave nonlinearities have been carried out with the hybrid MHD-GK code MEGA Ido *et al.* (2016) , with a reduced 1D model solved with the code COBBLES Lesur *et al.* (2016) and with the GK semi-lagrangian code GYSELA Zarzoso *et al.* (2012) in the absence of turbulence, and with GYSELA in the presence of turbulence Zarzoso *et al.* (2013). Although much has been understood on the linear and nonlinear dynamics of EGAMs, thanks to the above-mentioned studies, nevertheless, to the present day no theory exists to predict the EGAM saturation level. This study, in the regime of a dominant wave-particle nonlinearity, is the goal of this paper.

The nonlinear saturation of EGAMs is investigated here by means of electrostatic simulations with the gyrokinetic particle-in-cell code ORB5 Jolliet *et al.* (2007); Bottino *et al.* (2011); Bottino & Sonnendrücker (2015). ORB5 has been successfully verified against analytical theory and benchmarked against other gyrokinetic codes, for the linear dynamics of GAMs Biancalani *et al.* (2017), and EGAMs Biancalani *et al.* (2014); Zarzoso *et al.* (2014). A detailed comparison with the beam-plasma instability (BPI) O’Neil (1965); O’Neil & Malmberg (1968) in a 1-dimensional uniform plasma is also done, following the scheme anticipated in Ref. Qiu *et al.* (2011, 2014). Similarly to the BPI, the saturation level of EGAM is shown to scale quadratically with the linear growth rate. A similar investigation was also previously done for Alfvén modes (see, for example, Ref. Briguglio *et al.* (2014)). As a main result of these considerations, we provide here the theoretical prescription for the quantitative prediction of the EGAM saturation level. The EGAM frequency is also studied, and shown to evolve in time when approaching the saturation, like the BPI (see, for example, Ref. Morales & O’Neil (1972); Armon & Friedland (2016)). The chirping rate is observed to get of the order of magnitude of the

squared of the EP bounce frequency near the saturation. This denotes a transition from adiabatic to non-adiabatic regimes. The importance of understanding whether the EGAM nonlinear dynamics is adiabatic or non-adiabatic is linked to the underlying mechanisms of the saturation, i.e., whether the saturation is accessed through the local flattening of particle distribution in the resonance region due to wave-particle trapping Qiu *et al.* (2011) or through the avalanches of phase space mode structures Zonca *et al.* (2015) due to the feedbacks of EP distribution and mode structure in phase space.

The paper is organized as follows. The adopted gyrokinetic model is described in Sec. 2, and the equilibrium and case definition in Sec. 3. The linear dynamics is described in Sec. 4. The saturation levels are investigated in Sec. 5. The regimes of different adiabaticity are investigated by means of the analysis of the frequency, in Sec. 6. Finally, a summary of the results is given in Sec. 7.

2. The model

The main damping mechanism of GAM and EGAM is the Landau damping, which makes the use of a kinetic model necessary. In this paper we use the global gyrokinetic particle-in-cell code ORB5 Jolliet *et al.* (2007). ORB5 was originally developed for electrostatic ITG turbulence studies, and recently extended to its multi-species electromagnetic version in the framework of the NEMORB project Bottino *et al.* (2011); Bottino & Sonnendrücker (2015). In this paper, collisionless electrostatic simulations are considered.

The model equations of the electrostatic version of ORB5 is made by the trajectories of the markers, and by the gyrokinetic Poisson law for the scalar potential ϕ . These equations are derived in a Lagrangian formulation Bottino & Sonnendrücker (2015), based on the gyrokinetic Vlasov-Maxwell equations of Sugama, Brizard and Hahm Sugama (2000); Brizard & Hahm (2007). The equations for the marker trajectories (in the electrostatic version of the code) are Bottino & Sonnendrücker (2015):

$$\dot{\mathbf{R}} = \frac{1}{m_s} p_{\parallel} \frac{\mathbf{B}^*}{B_{\parallel}^*} + \frac{c}{q_s B_{\parallel}^*} \mathbf{b} \times [\mu \nabla B + q_s \nabla \tilde{\phi}] \quad (2.1)$$

$$\dot{p}_{\parallel} = -\frac{\mathbf{B}^*}{B_{\parallel}^*} \cdot [\mu \nabla B + q_s \nabla \tilde{\phi}] \quad (2.2)$$

$$\dot{\mu} = 0 \quad (2.3)$$

The coordinates used for the phase space are $(\mathbf{R}, p_{\parallel}, \mu)$, i.e. respectively the gyrocenter position, canonical parallel momentum $p_{\parallel} = m_s v_{\parallel}$ and magnetic momentum $\mu = m_s v_{\perp}^2 / (2B)$ (with m_s and q_s being the mass and charge of the species). v_{\parallel} and v_{\perp} are respectively the parallel and perpendicular component of the particle velocity. The gyroaverage operator is labeled here by the tilde symbol $\tilde{\cdot}$. $\mathbf{B}^* = \mathbf{B} + (c/q_s) \nabla \times (\mathbf{b} p_{\parallel})$, where \mathbf{B} and \mathbf{b} are the equilibrium magnetic field and magnetic unitary vector.

Kinetic effects of the electrons are neglected. This is done by calculating the electron gyrocenter density directly from the value of the scalar potential as Bottino & Sonnendrücker (2015):

$$n_e(\mathbf{R}, t) = n_{e0} + \frac{q_s n_{e0}}{T_{e0}} (\phi - \bar{\phi}) \quad (2.4)$$

where $\bar{\phi}$ is the flux-surface averaged potential, instead of treating the electrons with markers evolved with Eqs. 2.1, 2.2, 2.3.

We focus on the dynamics of zonal perturbations, by filtering out all non-zonal components (this is to avoid interactions of zonal/non-zonal modes). Wave-wave coupling is neglected, by evolving the bulk-ion and electron markers along unperturbed trajectories.

This means that, in Eqs. 2.1, 2.2, 2.3 for the bulk ions, the last terms, proportional to the EGAM electric field, are dropped. The nonlinear wave-particle dynamics is studied by evolving the EP markers along the trajectories which include perturbed terms associated with the EGAM electric field. This means that the EP markers are evolved with Eqs. 2.1, 2.2, 2.3 where the terms proportional to the EGAM electric field are retained.

The gyrokinetic Poisson equation is Bottino & Sonnendrücker (2015):

$$-\nabla \cdot \frac{n_0 m_i c^2}{B^2} \nabla_{\perp} \phi = \sum_{s \neq e} \int dW q_s \delta \tilde{f}_s - n_e(\mathbf{R}, t) \quad (2.5)$$

with $n_0 m_i$ being here the total plasma mass density (approximated as the ion mass density). The summation over the species is performed for the bulk ions and for the EP, whereas the electron contribution is given by $-n_e(\mathbf{R}, t)$. Here $\delta f = f - f_0$ is the gyrocenter perturbed distribution function, with f and f_0 being the total and equilibrium (i.e. independent of time, assumed here to be a Maxwellian) gyrocenter distribution functions. The integrals are over the phase space volume, with $dW = (2\pi/m_i^2) B_{\parallel}^* dp_{\parallel} d\mu$ being the velocity-space infinitesimal volume element.

3. Equilibrium and simulation parameters

The tokamak magnetic equilibrium is defined by a major and minor radii of $R_0 = 1$ m and $a = 0.3125$ m, a magnetic field on axis of $B_0 = 1.9$ T, a flat safety factor radial profile, with $q = 2$, and circular flux surfaces (with no Grad-Shafranov shift). Flat temperature and density profiles are considered at the equilibrium for all species. The bulk plasma temperature is defined by $\rho^* = \rho_s/a$, with $\rho_s = c_s/\Omega_i$, with $c_s = \sqrt{T_e/m_i}$ being the sound speed. Three increasing values of bulk plasma temperature are considered, for investigating the dependence of our results on the Landau damping, corresponding to: $\rho_1^* = 1/256 = 0.0039$, $\rho_2^* = 1/128 = 0.0078$, and $\rho_3^* = 1/64 = 0.0156$ ($\tau_e = T_e/T_i = 1$ for all cases described in this paper).

All parameters defined so far, are adopted by ORB5 with no consideration of the mass of the bulk ion species. The choice of the bulk ion mass is done only during the post-processing of the results of ORB5, if we need to know the values of equilibrium or perturbed quantities in non-normalized units. In particular, in the case of a hydrogen plasma, we get a value of the ion cyclotron frequency of $\Omega_i = 1.82 \cdot 10^8 \text{ rad/s}$. With this choice of bulk specie, we can calculate the plasma temperature and sound frequency. The three values of plasma temperature are $T_{i1} = 515$ eV, $T_{i2} = 2060$ eV, and $T_{i3} = 8240$ eV. The sound frequency is defined as $\omega_s = 2^{1/2} v_{ti}/R$ (with $v_{ti} = \sqrt{T_i/m_i}$, which for $\tau_e = 1$ reads $v_{ti} = c_s$). We obtain the following three values of the sound velocity: $c_{s1} = 2.22 \cdot 10^5$ m/s, $c_{s2} = 4.44 \cdot 10^5$ m/s, $c_{s3} = 8.88 \cdot 10^5$ m/s. These correspond to the following three values of the sound frequency: $\omega_{s1} = 3.14 \cdot 10^5$ rad/s, $\omega_{s2} = 6.28 \cdot 10^5$ rad/s, and $\omega_{s3} = 1.25 \cdot 10^6$ rad/s.

The energetic particle distribution function is a double bump-on-tail, with two bumps at $v_{\parallel} = \pm v_{bump}$ (see Fig. 1), like in Ref. Biancalani *et al.* (2014). In this paper, $v_{bump} = 4 v_{ti}$ is chosen. In order to initialize a distribution function which is function of constants of motion only, the modified variable $\tilde{v}_{\parallel} = \sqrt{2(E - \mu B_{max})/m/v_{ti}}$ is used instead of $v_{\parallel} = \sqrt{2(E - \mu B(r, \theta))/m/v_{ti}}$ (similarly to Ref. Zarzoso *et al.* (2012); Biancalani *et al.* (2014); Zarzoso *et al.* (2014)). Neumann and Dirichlet boundary conditions are imposed to the scalar potential, respectively at the inner and outer boundaries, $s = 0$ and $s = 1$.

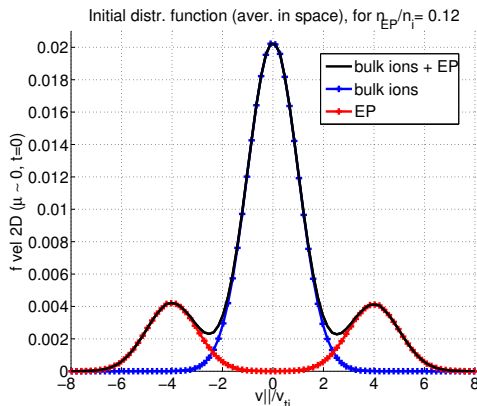


FIGURE 1. Initial EP distribution function for a simulation with $n_{EP}/n_i = 0.12$, $v_{bump}/v_{ti} = 4$.

4. Linear dynamics

The linear dynamics of EGAMs in an equilibrium similar to the one considered in Sec. 3, has been investigated in Ref. Zarzoso *et al.* (2014) for a bulk plasma temperature given by $\rho^* = 1/64 = 0.0156$, by means of ORB5 simulations and analytical theory. A scan on the EP concentration is performed here, similarly to what was done in Ref. Zarzoso *et al.* (2014), but with three different values of bulk plasma temperature, corresponding to three different values of ρ^* , as described in Sec. 3. The dependence of the linear dynamics (frequency and growth rate) on the EP concentration is shown in Fig. 2. Both the frequency and the growth rates are observed to follow the qualitative scalings as described in Ref. Biancalani *et al.* (2014) and Zarzoso *et al.* (2014). Note, in particular, that the growth rate does not grow linearly with n_{EP} .

The dependence of the frequency on the EP concentration is not observed to change with ρ^* . Regarding the growth rate, no change is observed when going from $\rho_3^* = 0.0039$ to $\rho_2^* = 0.0078$, meaning that the measured growth rate is basically given by the value of the drive, and the Landau damping here is negligible for the chosen values of EP concentration. On the other hand, when further increasing the temperature, and going to $\rho_1^* = 0.0156$, a smaller value of growth rate is measured, meaning a higher Landau damping. The transit resonance velocity of the EP can be calculated by knowing the EGAM frequency of a specific simulation. Considering a case with $n_{EP}/n_i = 0.12$ as an example, the frequency is measured as: $\omega_L = 1.2\omega_s$. For comparison, the GAM frequency for these parameters is $\omega_{GAM} = 1.8\omega_s$. Then, the transit resonance velocity in the linear phase is calculated as $v_{||0} = qR\omega_L = 3.4v_{ti}$, with ω_L being the EGAM linear frequency.

5. Scaling of the saturated amplitudes

In this Section, we focus on the value of the saturated electric field $\delta\bar{E}_r$, and we investigate its dependence on the value of the linear growth rate and of the damping. The corresponding scaling of $\delta\bar{E}_r$ sheds light on the mechanism which is responsible for the saturation. A one-to-one comparison with the saturation mechanism of the BPI is also described.

The amplitude of the EGAM at saturation has been measured in different simulations performed with ORB5. The wave-particle nonlinearity only has been considered, by pushing on perturbed trajectories the EP population only. Therefore, even if the linear resonance velocity falls near the tail of the bulk ions (see Fig. 1), no nonlinear interaction

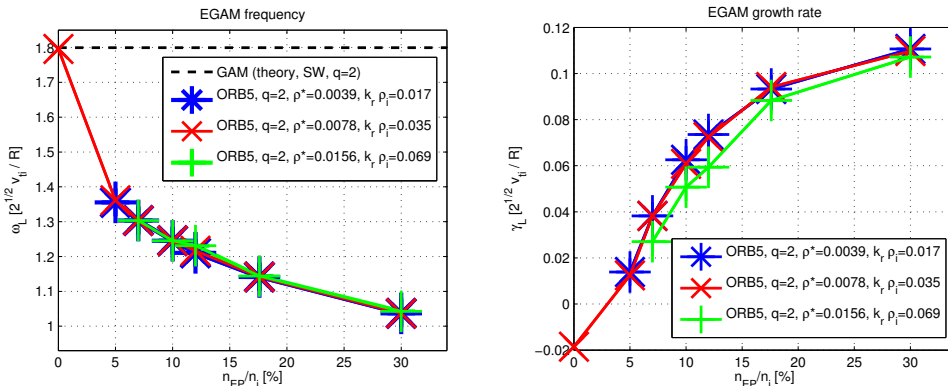


FIGURE 2. Frequency (left, “a”) and growth rate (right, “b”) vs EP concentration, for simulations with $\zeta = v_{bump}/v_{th}=4$.

of those bulk ions with the EGAM is considered in our model. More in general, the nonlinear interaction of the bulk ions with the EGAM is expected to be important: this has been studied in part analytically in Ref. Qiu *et al.* (2017), and its study with ORB5 is in progress. Different values of the bulk temperature, and the EP concentration, have been considered. As an example, the radial structure of a nonlinear simulation with $\rho^* = 0.0156$, $n_{EP}/n_i = 0.176$ is depicted in Fig. 3-a. No sensible change in the radial wave-number is observed when going from the linear phase, to the saturation, and after the saturation. This confirms that in this particular configuration, where all equilibrium radial profiles are flat, EGAM can be treated as a 1-dimensional problem where the radial direction does not play an important role.

When varying only the bulk temperature, both the linear frequency and growth rate are observed to scale with the sound frequency, which is a good normalization frequency (consistently with Fig. 2). The saturation level increases with the linear growth rate, similarly to other instabilities like the BPI in a uniform system and the Alfvén instabilities in tokamaks. This is depicted in Fig. 3-b, where non-normalized units are used (in particular, the ion cyclotron frequency is selected as a time unit not depending on the temperature).

The scalings with the energetic particle concentration are also investigated. The results are shown in Fig. 4a. We obtain that, in the considered regime, the saturated level scales as the quadratic power of the linear growth rate. This quadratic scaling is typical for marginally stable bump-on-tail instabilities, as derived by O’Neil O’Neil (1965); O’Neil & Malmberg (1968).

We can consider the problem to be similar to a monochromatic beam-plasma system, in which particles are moving in the potential well of the perturbed electric field. Depending on the energy, some particles are trapped inside the well and execute bounce motion with frequency ω_b in the frame moving with the wave phase velocity. The resonant particles exchange energy with the mode, causing the amplitude to grow and the particles to redistribute in phase space, flattening the velocity distribution in the vicinity of the resonant parallel velocity $v_{\parallel} = \omega q R_0$. The drive is due to the positive slope of the particle distribution in the velocity space at the resonant parallel velocity, which acts as an inverse Landau damping. In the initial stage $\omega_b \ll \gamma_L$, the mode grows exponentially with a linear growth rate, making more and more particles to become trapped in the phase space. After some significant particle velocity redistribution, the power exchange between the wave and the particles is balanced, causing the wave amplitude to saturate.

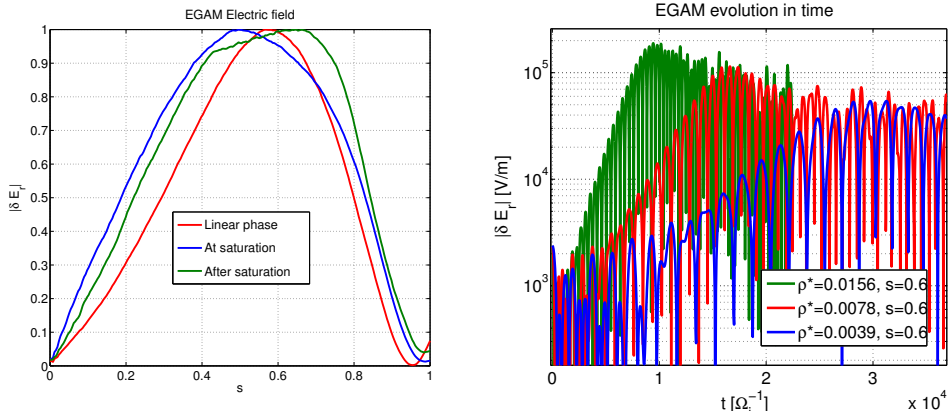


FIGURE 3. On the left (Fig. “a”), EGAM normalized radial structure for $\rho^* = 0.0156$, $n_{EP}/n_i = 0.176$. On the right (Fig. “b”), absolute value of the electric field measured at the position of the peak, $s = 0.6$, for three different simulations with respectively $\rho^* = 0.0039$ (blue), $\rho^* = 0.0078$ (red), $\rho^* = 0.0156$ (green). All simulations here have $n_{EP}/n_i = 0.30$. The time is expressed in units of Ω_i^{-1} .

Since the initial perturbation is negligible, the saturation level is determined by the exchange of energy between the mode and a band of resonant particles Levin *et al.* (1972). The chirping of the mode seen in Fig. 5 is a strongly non-linear effect that occurs when the amplitude is large enough to have the trapped (and more generally resonant) particles with $\omega_b \sim \gamma_L$ drastically change the dynamics of the mode through the modification of the distribution function and non-perturbative fast particle response. Namely, the mode dynamics is determined by all resonant particles that exhibit a continuous oscillation, trapping and detraping in the potential well of the mode, thus contributing (non-perturbatively) to the non-adiabatic behavior observed in the simulation.

The quadratic scaling of the saturation level with the damping obtained with our simulations is similar to the saturation of the BPI, where it occurs due to wave-particle trapping O’Neil (1965). For the BPI, the original reference of M. B. Levin (1972) gives a value of $\omega_b = 3.06 \gamma_L$ at saturation Levin *et al.* (1972) (for comparison, note that more recent numerical calculations find $\omega_b = 3.2 \gamma_L$ Lesur *et al.* (2009); Carlevaro *et al.* (2016a,b)). For EGAMs, the bounce frequency is given by Qiu *et al.* (2011):

$$\omega_b^2 = \alpha_1 \delta \bar{E}_r, \quad \text{with } \alpha_1 \equiv \frac{e \hat{V}_{dc}}{2m_{EP} v_{||0} q R_0} \quad (5.1)$$

with m_{EP} being the mass of the energetic particle specie, considered equal to the bulk ion mass in this paper, $v_{||0}$ the velocity matching the resonance condition, and $\hat{V}_{dc} = m_{EP} v_{||0}^2 / (eBR)$ the magnetic curvature drift. Therefore we have:

$$\alpha_1 = \frac{v_{||0}}{2qR^2B} = \frac{\omega_L}{2RB} \quad (5.2)$$

We emphasize that the value of α_1 depends on ω_L . This is a main difference with respect to the BPI, where there is only one value $\omega_{lin} = \omega_{pe}$, with ω_{pe} being the plasma frequency.

The dependence of the maximum electric field on the linear growth rate can be measured with the results of the numerical simulations. For the simulations shown in Fig. 4, we find:

$$\delta \bar{E}_r = \alpha_2 \gamma_L^2 \quad (5.3)$$

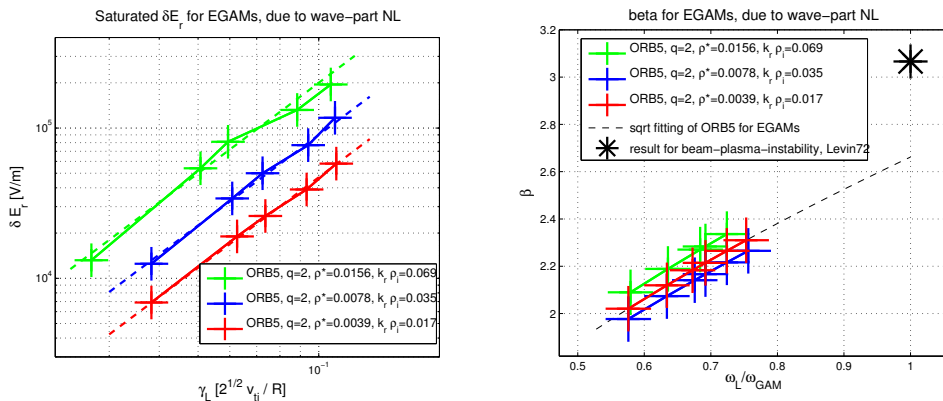


FIGURE 4. On the left (Fig. “a”), maximum value of the EGAM radial electric field, vs linear growth rate, for the same simulations as in Fig. 2. The red, blue and green crosses refer respectively to $\rho^* = 0.0039$, $\rho^* = 0.0078$, $\rho^* = 0.0156$. The dashed lines are the quadratic fitting formulas. On the right (Fig. “b”), the value of β as given in Eq. 5.5, vs the linear frequency, for the same simulations. The black dashed line is the square root interpolation. For a reference, the black star shows the result obtained for the BPI in Ref. Levin *et al.* (1972).

The values of α_2 are found to depend on the bulk temperature. For the three chosen increasing values of ρ^* , i.e. $\rho^* = 0.0039$, 0.0078 and 0.0156 , we have respectively $\alpha_2 = 0.47 \cdot 10^7$ V/m, $0.9 \cdot 10^7$ V/m, and $2.0 \cdot 10^7$ V/m. Finally the relationship between the EP bounce frequency and the linear growth rate is obtained:

$$\omega_b = \beta \gamma_L \quad (5.4)$$

where β is calculated as $\beta = (\alpha_1 \alpha_2)^{1/2} / \omega_s$, which yields:

$$\beta = \beta_0 \left(\frac{\omega_L}{\omega_{GAM}} \right)^{1/2}, \quad \text{with } \beta_0 = \frac{1}{\omega_s} \left(\frac{\omega_{GAM} \alpha_2}{2RB} \right)^{1/2} \quad (5.5)$$

Note that here, β depends on the EGAM frequency, which changes with the intensity of the drive, given here by the EP concentration (see Fig. 2). As a comparison, note that in the problem of the BPI, solved in Ref. O’Neil (1965); O’Neil & Malmberg (1968); Levin *et al.* (1972), on the other hand, the mode frequency is assumed to be constant and equal to the frequency measured in the absence of EP. On the other hand, the values of β are found not to depend on the damping, which changes with the three different bulk temperatures: an interpolation can be drawn for all considered simulations, and shown to depend on ω_L only (see Fig. 4b). In this sense, the formula given in Eq. 5.5 is universal for the chosen regime, because it does not depend on the bulk plasma temperature.

The considered equilibrium has been chosen in order to excite EGAMs out of a GAM, and not out of a Landau pole, as described in Ref. Zarzoso *et al.* (2014). This choice of the mode is done, in order to have a one-to-one correspondence with the BPI, where the mode which is excited by the energetic electron beam is the Langmuir wave which is an eigenmode of the system in the absence of EP. Following this consideration, we can consider the interpolation of the results shown in Fig. 4, and take the extrapolation to $\omega_L \rightarrow \omega_{GAM}$, which is the limit assumed in the resolution of the BPI. In this case, the extrapolation gives a unique value, which defines the EGAM instability, i.e. $\beta_0 = \beta(\omega_L / \omega_{GAM} = 1) = 2.66$. This is to be compared with the value of β obtained for the BPI Levin *et al.* (1972); Lesur *et al.* (2009); Carlevaro *et al.* (2016a,b), i.e. $\beta_{BPI} = 3.2$ (originally estimated as $\beta_{BPI} = 3.06$ by Levin).

Finally, by using Eqs. 5.1, 5.2, 5.4 and 5.5, we can write the formula for the saturated

electric field as a function of the linear characteristics of the mode:

$$\delta E_r = \frac{2RB\beta_0^2}{\omega_{GAM}} \gamma_L^2 \quad (5.6)$$

with the value of $\beta_0 = 2.66$ in the regime considered in this paper.

6. Frequency

In this section, we show the results of the measurement of the time evolution of the EGAM frequency. In Sec. 5, we have shown that a quadratic scaling of the saturated electric field on the linear growth rate is found. This quadratic scaling, has a one-to-one correspondence on the Langmuir wave problem investigated by O'Neil, where the saturation occurs due to wave-particle trapping. The wave-particle trapping mechanism, is usually referred to as adiabatic, meaning that a slowly increasing potential well traps more and more energetic particles. In this adiabatic regime, the mode frequency varies very slowly with respect to the bounce frequency. On the other hand, in the EGAM case considered here, we show that the saturation is not strictly adiabatic, but a transition between adiabatic and non-adiabatic regime occurs at the time of the saturation.

In this section, we take again the EGAM case with $\rho^* = 0.0078$, $n_{EP}/n_i = 0.12$, as a typical case, and we investigate the variation of the frequency in time in comparison with the bounce frequency. For the measurement of the frequency, we use the radial zonal electric field measured at $s=0.5$. The measurement of the frequency is performed in two different ways: a) as an average of the period between several EGAM oscillation peaks, as shown in Fig. 5-a; b) with a short-time Fourier transform (STFT), as shown in Fig. 5-b.

With the first technique, namely measuring the frequency by inversion of the period between neighbouring peaks, an upward chirping is observed in the nonlinear phase, of the order of 10% of the linear frequency. This means that the resonance condition changes in time, with resonance velocity slightly increasing at the time of the saturation or in the later phase (see Fig. 5-a). A dominantly upward chirping of EGAMs was previously observed and documented in Ref. Berk *et al.* (2006); Wang *et al.* (2013). **In the cases of interest, the frequency changes with a similar time scale as the evolution of the amplitude. In this regime, we refer to this change of the frequency in time as nonlinear frequency shift, i.e. frequency chirping.**

The second technique, consists in measuring the frequency with a short-time Fourier transform (STFT) on a Hamming time-window. With this technique, the error bar in frequency is large (due to the small number of oscillations in the nonlinear regime around the saturation), namely of the order of 10-20% (see Fig. 5-b). With such a big error-bar, no clear upward chirping is observed. Near the time of the saturation, i.e. $t \simeq 2.2 \Omega_i^{-1}$, only one mode is observed. This is the condition of application of the direct technique of measurement of the frequency described above, where the frequency can be measured as the inverse of the period among peaks.

As mentioned above, the EP bounce frequency ω_b depends on the mode amplitude. **For this case, the mode amplitude grows during a linear phase, then enters the nonlinear phase and saturates at the time $t = 2.3 \cdot 10^4 \Omega_i^{-1}$. The corresponding value of ω_b^2 for the considered simulation is shown in Fig. 6-a.** When the EGAM frequency evolves slowly in time with respect to the inverse of the bounce frequency, then the EP can bounce back and forth many times, and this is called adiabatic dynamics. The adiabaticity parameter, defined as ω'/ω_b^2 , measures the level of adiabaticity of the dynamics. **Here, ω' is the time derivative of the frequency.** The time evolution of the adiabaticity parameter for the considered simulation is depicted in Fig. 6-b (with ω being the instantaneous mode

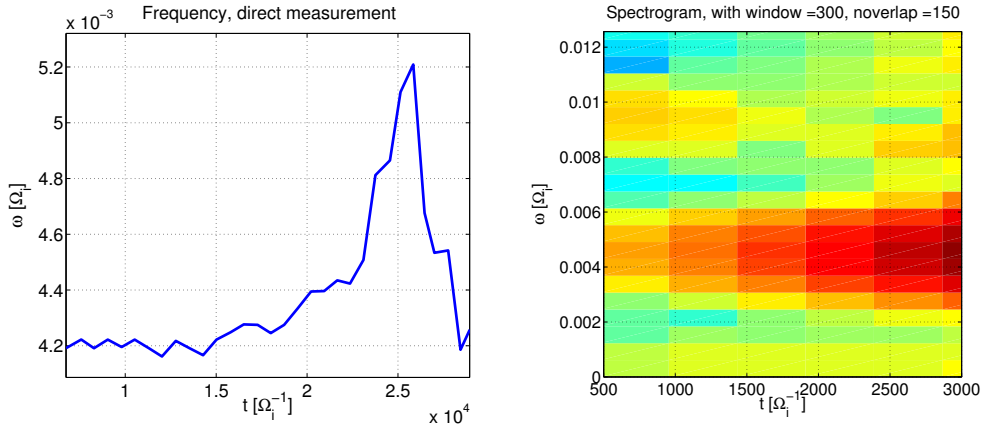


FIGURE 5. Nonlinear evolution of the frequency, measured as a short-time average of the period between the peaks (left, “a”) or with a short-time Fourier transform (right, “b”), for $\rho^* = 0.0078$, $n_{EP}/n_i = 0.12$.

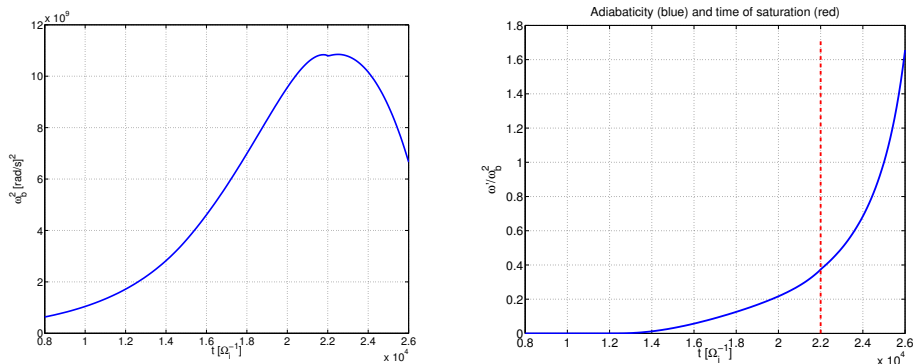


FIGURE 6. Squared bounce frequency (left, “a”) and adiabaticity (right, “b”) for the EGAM with $\rho^* = 0.0078$, $n_{EP}/n_i = 0.12$.

frequency). A transition from adiabatic to non-adiabatic dynamics near the saturation is observed. In particular, near the saturation, the EP do not have the time to perform many bounces during the nonlinear modification of the wave. From this respect, the EGAM dynamics and the BPI are not in analogy. The details of the EGAM saturation mechanism will be investigated with a power-balance diagnostics in phase space, and discussed in a separate paper, where a comparison with the nonlinear dynamics described in Ref. Berk *et al.* (2006); Wang *et al.* (2013) will be discussed.

7. Summary and discussion

The importance of understanding the nonlinear dynamics of EGAM, i.e. energetic particle (EP) driven geodesic acoustic modes (GAM), is due to their possible role in interacting with turbulence and with the EP population present in tokamak plasmas as a result of nuclear reactions and/or heating mechanisms. In particular, the level of the nonlinear saturation of EGAM is directly related to their efficiency in regulating turbulence or redistributing EP in phase space.

In this paper, we have investigated the problem of the nonlinear saturation of EGAM

with the gyrokinetic particle-in-cell code ORB5, focusing on the wave-particle nonlinearity. Electrostatic collisionless simulations have been considered, with circular flux surfaces magnetic equilibria, and neglecting the kinetic effects of electrons.

The level of the saturated electric field has been shown to scale quadratically with the linear growth rate, similarly to the beam-plasma instability (BPI) in 1D uniform plasmas, and to Alfvén Eigenmodes (AE) near marginal stability. We note that, due to the flat density and temperature profiles assumed for all species at the equilibrium, the EGAM has a strict 1D dynamics similar to the BPI. In fact, the EGAM electric perturbation is low frequency ($\omega \ll \Omega_i$) and zonal ($m=n=0$) and when radial nonuniformities are negligible, like in our case, the direction parallel to the equilibrium magnetic field becomes the only relevant direction for the wave-particle interaction, i.e. for the inverse Landau damping. We also note that, in the case of beta-induced AE, due to the finite radial mode structure compared to resonant particle radial excursion, deviation from the $\delta E_r \propto \gamma_L^2$ is observed due to the competition of resonance detuning and radial decoupling Wang *et al.* (2012); Zhang *et al.* (2012). A similar deviation is anticipated as one further increases the drive of EPs, from the correspondence of EP pitch angle scattering by frequency chirping EGAMs and the radial wave-particle pumping by frequency chirping finite-n BAEs. This will be the content of our next publication.

We have also investigated the relationship of the bounce frequency of the EP in the field of the EGAM, with the linear growth rate, finding a linear dependence, similarly to the BPI. The linear coefficient, in the case of the EGAM problem, is proportional to the square root of the EGAM frequency, and is not a constant like in the beam-plasma instability. In the limit of $\omega_L/\omega_{GAM} \rightarrow 1$, which corresponds to the BPI problem when the mode frequency does not move sensibly from the value of the plasma frequency ω_p , a unique value of the linear coefficient can be estimated: $\beta_0 = 2.66$, to be compared with the factor $\beta_{BPI} \simeq 3.2$ of the BPI. This value of $\beta_0 = 2.66$ defines the EGAM in the regime of interest. As a main result, the formula for the saturation level has been provided. The investigation of the dependence of β on equilibrium parameters like the safety factor, the magnetic flux surface elongation, the EP distribution function, and the effect of kinetic electrons is left to a future work.

Finally, we have investigated the temporal variation of the EGAM frequency during the saturation phase. The initial adiabatic regime, defined as the regime where the time derivative of the EGAM frequency is much smaller than the squared EP bounce frequency, has been shown to have a transition to a non-adiabatic regime at the saturation. The exact analytical model of this phenomenon is still a work in progress and will be the first expansion of this work. The simplified picture is that the mode will chirp to maintain maximal exchange of power with the energetic particles Chen & Zonca (2016), while balancing the Landau damping. The mode frequency is at the same time bound by the wave dispersion relation and plasma equilibrium, making their simultaneous examination with the power exchange equation necessary for determining the rate and direction of chirping. The non-adiabatic behavior is enabled by the non-perturbative response of the energetic particles, which consists of significant distortion of the distribution function in the resonant region, as well as of the particle trapping and detrapping Chen & Zonca (2016). Differently, the adiabatic chirping is connected with either external driven fluctuations, or slow energetic particle redistribution, provided that the drive is sufficiently weak Breizman *et al.* (1997).

Acknowledgements

Interesting discussions with N. Carlevaro, G. Montani, F. Zonca on the nonlinear dynamics of the energetic particles are acknowledged. Interesting discussions with A. Mishchenko and B. Finney McMillan on the treatment of EGAMs with ORB5, and with the whole ORB5 team, are also acknowledged. Part of this work has been carried out within the framework of the EUROfusion Consortium and has received funding from the Euratom research and training programme 2014-2018 under grant agreement No 633053, within the framework of the *Nonlinear energetic particle dynamics* (NLED) European Enabling Research Project, WP 15-ER-01/ENEA-03 and *Nonlinear interaction of Alfvénic and Turbulent fluctuations in burning plasmas* (NAT) European Enabling Research Project, CfP-AWP17-ENR-MPG-01. The views and opinions expressed herein do not necessarily reflect those of the European Commission. Part of this work has been funded by the Centre de Coopération Universitaire Franco-Bavarois - Bayerisch-Französisches Hochschulzentrum, for the grant FK 30_15. Simulations were performed on the Marconi supercomputer within the framework of the OrbZONE and ORBFAST projects. Part of this work was done while two of the authors (A. Biancalani and I. Novikau) were visiting LPP-Palaiseau, whose team is acknowledged for the hospitality. One of the authors (I.C.) wants to thank the Max Planck Princeton Center for the support during this work. This paper is dedicated to Prof. Francesco Pegoraro.

REFERENCES

- ARMON, T. & FRIEDLAND, L. 2016 Chirped resonance dynamics in phase space. *Journal of Plasma Physics* **82** (5), 705820501.
- BERK, H. L., BOSWELL, C. J., BORBA, D., FIGUEIREDO, A. C. A., JOHNSON, T., NAVE, M. F. F., PINCHES, S. D., SHARAPOV, S. E. & EFDA CONTRIBUTORS, J. 2006 Explanation of the JET $n = 0$ chirping mode. *Nuclear Fusion* **46**, S888–S897.
- BERK, H. L. & ZHOU, T. 2010 Fast excitation of EGAM by NBI. *Nuclear Fusion* **50** (3), 035007.
- BIANCALANI, A., BOTTINO, A., EHRLACHER, C., GRANDGIRARD, V., MERLO, G., NOVIKAU, I., QIU, Z., SONNENDRÜCKER, E., GARBET, X., GÖRLER, T., LEERINK, S., PALERMO, F. & ZARZOSO, D. 2017 Cross-code gyrokinetic verification and benchmark on the linear collisionless dynamics of the geodesic acoustic mode. *Physics of Plasmas* **24** (6), 062512, arXiv: 1705.06554.
- BIANCALANI, A., BOTTINO, A., LAUBER, P. & ZARZOSO, D. 2014 Numerical validation of the electromagnetic gyrokinetic code NEMORB on global axisymmetric modes. *Nuclear Fusion* **54** (10), 104004, arXiv: 1311.7160.
- BOTTINO, A. & SONNENDRÜCKER, E. 2015 Monte Carlo particle-in-cell methods for the simulation of the Vlasov-Maxwell gyrokinetic equations. *Journal of Plasma Physics* **81** (5), 435810501.
- BOTTINO, A., VERNAY, T., SCOTT, B., BRUNNER, S., HATZKY, R., JOLLIET, S., McMILLAN, B. F., TRAN, T. M. & VILLARD, L. 2011 Global simulations of tokamak microturbulence: finite- β effects and collisions. *Plasma Physics and Controlled Fusion* **53** (12), 124027.
- BREIZMAN, B. N., BERK, H. L., PEKKER, M. S., PORCELLI, F., STUPAKOV, G. V. & WONG, K. L. 1997 Critical nonlinear phenomena for kinetic instabilities near threshold. *Physics of Plasmas* **4**, 1559–1568.
- BRIGUGLIO, S., WANG, X., ZONCA, F., VLAD, G., FOGACCIA, G., DI TROIA, C. & FUSCO, V. 2014 Analysis of the nonlinear behavior of shear-Alfvén modes in tokamaks based on Hamiltonian mapping techniques. *Physics of Plasmas* **21** (11), 112301.
- BRIZARD, A. J. & HAHM, T. S. 2007 Foundations of nonlinear gyrokinetic theory. *Reviews of Modern Physics* **79**, 421–468.
- CARLEVARO, N., MILOVANOV, A., FALESSI, M., MONTANI, G., TERZANI, D. & ZONCA, F. 2016a Mixed Diffusive-Convective Relaxation of a Warm Beam of Energetic Particles in Cold Plasma. *Entropy* **18**, 143, arXiv: 1512.07045.

- CARLEVARO, N., MONTANI, G. & TERZANI, D. 2016*b* On the viability of the single-wave model for the beam plasma instability. *EPL (Europhysics Letters)* **115**, 45004, arXiv: 1604.07985.
- CHEN, L. & ZONCA, F. 2016 Physics of Alfvén waves and energetic particles in burning plasmas. *Reviews of Modern Physics* **88** (1), 015008.
- DIAMOND, P. H., ITOH, S.-I., ITOH, K. & HAHM, T. S. 2005 TOPICAL REVIEW: Zonal flows in plasma - a review. *Plasma Physics and Controlled Fusion* **47**, R35–R161.
- FU, G. Y. 2008 Energetic-Particle-Induced Geodesic Acoustic Mode. *Physical Review Letters* **101** (18), 185002.
- GIRARDO, J.-B., ZARZOSO, D., DUMONT, R., GARBET, X., SARAZIN, Y. & SHARAPOV, S. 2014 Relation between energetic and standard geodesic acoustic modes. *Physics of Plasmas* **21** (9), 092507.
- HASEGAWA, A., MACLENNAN, C. G. & KODAMA, Y. 1979 Nonlinear behavior and turbulence spectra of drift waves and Rossby waves. *Physics of Fluids* **22**, 2122–2129.
- HORVÁTH, L., PAPP, G., LAUBER, P., POR, G., GUDE, A., IGOCHINE, V., GEIGER, B., MARASCHEK, M., GUIMARAI, L., NIKOLAIEVA, V., POKOL, G. I. & THE ASDEX UPGRADE TEAM 2016 Experimental investigation of the radial structure of energetic particle driven modes. *Nuclear Fusion* **56** (11), 112003, arXiv: 1604.00639.
- IDO, T., ITOH, K., OSAKABE, M., LESUR, M., SHIMIZU, A., OGAWA, K., TOI, K., NISHIURA, M., KATO, S., SASAKI, M., IDA, K., INAGAKI, S. & ITOH, S.-I. 2016 Strong Destabilization of Stable Modes with a Half-Frequency Associated with Chirping Geodesic Acoustic Modes in the Large Helical Device. *Physical Review Letters* **116** (1), 015002.
- JOLLIET, S., BOTTINO, A., ANGELINO, P., HATZKY, R., TRAN, T. M., MCMILLAN, B. F., SAUTER, O., APPERT, K., IDOMURA, Y. & VILLARD, L. 2007 A global collisionless PIC code in magnetic coordinates. *Computer Physics Communications* **177**, 409–425.
- LAUBER, P. 2014 . *ITPA technical meeting on energetic particles* .
- LESUR, M., IDOMURA, Y. & GARBET, X. 2009 Fully nonlinear features of the energetic beam-driven instability. *Physics of Plasmas* **16** (9), 092305.
- LESUR, M., ITOH, K., IDO, T., OSAKABE, M., OGAWA, K., SHIMIZU, A., SASAKI, M., IDA, K., INAGAKI, S., ITOH, S.-I. & LHD EXPERIMENT GROUP 2016 Nonlinear Excitation of Subcritical Instabilities in a Toroidal Plasma. *Physical Review Letters* **116** (1), 015003.
- LEVIN, M. B., LYUBARSKIĬ, M. G., ONISHCHENKO, I. N., SHAPIRO, V. D. & SHEVCHENKO, V. I. 1972 Contribution to the Nonlinear Theory of Kinetic Instability of an Electron Beam in Plasma. *Soviet Journal of Experimental and Theoretical Physics* **35**, 898.
- MIKI, K. & IDOMURA, Y. 2015 Finite-Orbit-Width Effects on Energetic-Particle-Induced Geodesic Acoustic Mode. *Plasma and Fusion Research* **10**, 3403068–3403068.
- MORALES, G. J. & O’NEIL, T. M. 1972 Nonlinear Frequency Shift of an Electron Plasma Wave. *Physical Review Letters* **28**, 417–420.
- O’NEIL, T. 1965 Collisionless Damping of Nonlinear Plasma Oscillations. *Physics of Fluids* **8**, 2255–2262.
- O’NEIL, T. M. & MALMBERG, J. H. 1968 Transition of the Dispersion Roots from Beam-Type to Landau-Type Solutions. *Physics of Fluids* **11**, 1754–1760.
- QIU, Z., CHAVDAROVSKI, I., BIANCALANI, A. & CAO, J. 2017 On zero frequency zonal flow and second harmonic generation by finite amplitude energetic particle induced geodesic acoustic mode. *Physics of Plasmas* **24** (7), 072509, arXiv: 1703.01567.
- QIU, Z., CHEN, L. & ZONCA, F. 2014 Excitation of Kinetic Geodesic Acoustic Modes by Drift Waves in Nonuniform Plasmas. *41st EPS Conference on Plasma Physics* p. P4.004.
- QIU, Z., ZONCA, F. & CHEN, L. 2010 Nonlocal theory of energetic-particle-induced geodesic acoustic mode. *Plasma Physics and Controlled Fusion* **52** (9), 095003.
- QIU, Z., ZONCA, F. & CHEN, L. 2011 Kinetic theories of geodesic acoustic modes: Radial structure, linear excitation by energetic particles and nonlinear saturation. *Plasma Science and Technology* **13** (3), 257.
- QIU, Z., ZONCA, F. & CHEN, L. 2012 Geodesic acoustic mode excitation by a spatially broad energetic particle beam. *Physics of Plasmas* **19** (8), 082507.
- QU, Z. S., HOLE, M. J. & FITZGERALD, M. 2016 Energetic Geodesic Acoustic Modes Associated with Two-Stream-like Instabilities in Tokamak Plasmas. *Physical Review Letters* **116** (9), 095004.

- ROSENBLUTH, M. N. & HINTON, F. L. 1998 Poloidal Flow Driven by Ion-Temperature-Gradient Turbulence in Tokamaks. *Physical Review Letters* **80**, 724–727.
- SASAKI, M., KASUYA, N., ITOH, K., HALLATSCHKEK, K., LESUR, M., KOSUGA, Y. & ITOH, S.-I. 2016 A branch of energetic-particle driven geodesic acoustic modes due to magnetic drift resonance. *Physics of Plasmas* **23** (10), 102501.
- SASAKI, M., KASUYA, N., ITOH, K., KOSUGA, Y., LESUR, M., HALLATSCHKEK, K. & ITOH, S.-I. 2017 Toroidal momentum channeling of geodesic acoustic modes driven by fast ions. *Nuclear Fusion* **57** (3), 036025.
- SUGAMA, H. 2000 Gyrokinetic field theory. *Physics of Plasmas* **7**, 466–480.
- WANG, H., TODO, Y., IDO, T. & OSAKABE, M. 2015 Simulation study of high-frequency energetic particle driven geodesic acoustic mode. *Physics of Plasmas* **22** (9), 092507.
- WANG, H., TODO, Y. & KIM, C. C. 2013 Hole-Clump Pair Creation in the Evolution of Energetic-Particle-Driven Geodesic Acoustic Modes. *Physical Review Letters* **110** (15), 155006.
- WANG, X., BRIGUGLIO, S., CHEN, L., DI TROIA, C., FOGACCIA, G., VLAD, G. & ZONCA, F. 2012 Nonlinear dynamics of beta-induced Alfvén eigenmode driven by energetic particles. *Physical Review E* **86** (4), 045401, arXiv: 1203.3769.
- WINSOR, N., JOHNSON, J. L. & DAWSON, J. M. 1968 Geodesic Acoustic Waves in Hydromagnetic Systems. *Physics of Fluids* **11**, 2448–2450.
- ZARZOSO, D., BIANCALANI, A., BOTTINO, A., LAUBER, P., POLI, E., GIRARDO, J.-B., GARBET, X. & DUMONT, R. J. 2014 Analytic dispersion relation of energetic particle driven geodesic acoustic modes and simulations with NEMORB. *Nuclear Fusion* **54** (10), 103006.
- ZARZOSO, D., GARBET, X., SARAZIN, Y., DUMONT, R. & GRANDGIRARD, V. 2012 Fully kinetic description of the linear excitation and nonlinear saturation of fast-ion-driven geodesic acoustic mode instability. *Physics of Plasmas* **19** (2), 022102.
- ZARZOSO, D., MIGLIANO, P., GRANDGIRARD, V., LATU, G. & PASSERON, C. 2017 Nonlinear interaction between energetic particles and turbulence in gyro-kinetic simulations and impact on turbulence properties. *Nuclear Fusion* **57** (7), 072011.
- ZARZOSO, D., SARAZIN, Y., GARBET, X., DUMONT, R., STRUGAREK, A., ABITEBOUL, J., CARTIER-MICHAUD, T., DIF-PRADALIER, G., GHENDRIH, P., GRANDGIRARD, V., LATU, G., PASSERON, C. & THOMINE, O. 2013 Impact of Energetic-Particle-Driven Geodesic Acoustic Modes on Turbulence. *Physical Review Letters* **110** (12), 125002.
- ZHANG, H. S., LIN, Z. & HOLOD, I. 2012 Nonlinear Frequency Oscillation of Alfvén Eigenmodes in Fusion Plasmas. *Physical Review Letters* **109** (2), 025001.
- ZONCA, F. & CHEN, L. 2008 Radial structures and nonlinear excitation of geodesic acoustic modes. *EPL (Europhysics Letters)* **83**, 35001.
- ZONCA, F., CHEN, L., BRIGUGLIO, S., FOGACCIA, G., VLAD, G. & WANG, X. 2015 Nonlinear dynamics of phase space zonal structures and energetic particle physics in fusion plasmas. *New Journal of Physics* **17** (1), 013052, arXiv: 1410.8723.