



**HAL**  
open science

# No answer to the lack of specificity: mouse monoclonal antibody targeting the angiotensin II type 1 receptor AT1 fails to recognize its target

Marie-Lynda Bouressam, Isabelle Lartaud, François Dupuis, Sandra Lecat

## ► To cite this version:

Marie-Lynda Bouressam, Isabelle Lartaud, François Dupuis, Sandra Lecat. No answer to the lack of specificity: mouse monoclonal antibody targeting the angiotensin II type 1 receptor AT1 fails to recognize its target. *Naunyn-Schmiedeberg's Archives of Pharmacology*, 2018, 391 (8), pp.883-889. 10.1007/s00210-018-1522-4 . hal-01816221

**HAL Id: hal-01816221**

**<https://hal.univ-lorraine.fr/hal-01816221v1>**

Submitted on 15 Jun 2018

**HAL** is a multi-disciplinary open access archive for the deposit and dissemination of scientific research documents, whether they are published or not. The documents may come from teaching and research institutions in France or abroad, or from public or private research centers.

L'archive ouverte pluridisciplinaire **HAL**, est destinée au dépôt et à la diffusion de documents scientifiques de niveau recherche, publiés ou non, émanant des établissements d'enseignement et de recherche français ou étrangers, des laboratoires publics ou privés.

1 *Rapid Communication*

2 *Naunyn-Schmiedeberg's Archives of Pharmacology*

3

4 NO ANSWER TO THE LACK OF SPECIFICITY: Mouse monoclonal antibody targeting  
5 the angiotensin II type 1 receptor AT<sub>1</sub> fails to recognize its target.

6

7 Marie-Lynda BOURESSAM,<sup>1</sup> MSc; Isabelle LARTAUD,<sup>1</sup> PharmD, PhD; François  
8 DUPUIS,<sup>1</sup> PharmD, PhD ; Sandra LECAT,<sup>2</sup> PhD

9 <sup>1</sup>: Université de Lorraine, CITHEFOR, F-54000 Nancy, France

10 <sup>2</sup>: BSC UMR7242 "GPCRs, pain and inflammation" team, CNRS, Université de Strasbourg  
11 Labex Medalis, 67412 Illkirch, France

12

13 **Address for correspondence :**

14 Dr Sandra LECAT

15 Institut de recherche de l'École Supérieure de Biotechnologie de Strasbourg :  
16 Biotechnologie et Signalisation Cellulaire, UMR7242

17 Phone: (33)3-68-85-47-38

18 Email: [lecat@unistra.fr](mailto:lecat@unistra.fr)

19

20 **Running title:** Another non-specific AT<sub>1</sub> receptor mouse monoclonal antibody

21 **Number of references:** 24

22 **Number of figures:** 2

23

24 **ABSTRACT**

25 **Purpose.** Numerous antibodies targeting G protein-coupled receptors, GPCRs, have  
26 been described as non-specific among them polyclonal antibodies against angiotensin  
27 II type 1 receptor (AT<sub>1</sub>). We have tested the newly developed AT<sub>1</sub> receptor mouse  
28 monoclonal antibody for its specificity.

29 **Methods.** Human Embryonic Kidney HEK293 cells, which do not endogenously  
30 express AT<sub>1</sub> receptor, were transfected in order to overexpress a fluorescently labelled  
31 EGFP-tagged human AT<sub>1</sub> receptor. Western blot and immunofluorescence assays  
32 were performed to test the specificity of the Santa Cruz monoclonal antibody sc-57036.  
33 These results were compared to the ones obtained with the polyclonal sc-1173 anti-  
34 AT<sub>1</sub> receptor antibodies that have already been described as non-specific.

35 **Results.** While the positive controls using GFP antibodies detected the EGFP-tagged  
36 AT<sub>1</sub> receptor, both polyclonal and monoclonal anti-AT<sub>1</sub> receptor antibodies failed to  
37 specifically recognize the corresponding band by western blot, as similar bands were  
38 revealed in either transfected or non-transfected cells. It also failed to detect AT<sub>1</sub>  
39 receptor in immunofluorescence experiments.

40 **Conclusion.** The lack of target recognition of the monoclonal AT<sub>1</sub> receptor antibody in  
41 our experimental conditions suggests that this antibody could give misleading results  
42 such as misidentification of the protein. To our knowledge, no specific antibodies  
43 targeting AT<sub>1</sub> receptors have been developed so far and the field is thus in need of  
44 new technical developments.

45

46 **Key words:** G protein-coupled receptors – Angiotensin II type 1 receptor –antibody –  
47 specificity

## 48 INTRODUCTION

49 G protein-coupled receptors (GPCR) antibodies raise a lot of questions concerning  
50 offtarget detections (Michel et al. 2009). Numerous publications criticize the non-  
51 specificity of different GPCR antibodies: histamine H4-receptors (Beermann et al.  
52 2012) ; P2Y6 receptors (Yu and Hill 2013) ; cannabinoid receptors (Cécyre et al. 2014)  
53 ; dopamine receptors (Bodei et al. 2009).

54 Polyclonal antibodies targeting both angiotensin II (AngII) receptors type 1 (AT<sub>1</sub>) and  
55 type 2 (AT<sub>2</sub>) have been described as non-specific (Benicky et al. 2012; Herrera et al.  
56 2013; Hafko et al. 2013). Despite these findings, antibodies directed against AT<sub>1</sub>  
57 receptors are still widely used in the literature with more than twenty publications in  
58 2017 using the Santa Cruz aspecific sc-1173 polyclonal antibodies (Chao et al. 2017;  
59 Young et al. 2017; Liu et al. 2017) and already five publications in 2018 (Ahad et al.  
60 2018; Ishikane et al. 2018; Rizzetti et al. 2018; Zhao et al. 2018; Ribeiro et al. 2018).  
61 In these papers, authors assume that they proved the specificity of these antibodies.  
62 However, in most cases, the control consisted of using the blocking peptide provided  
63 by the supplier to highlight the disappearance of the detected bands (Oestreicher et  
64 al. 2006). This type of experiment proves that the antibodies recognize the peptide  
65 used for immunization, however it is not sufficient to confirm that they recognize the  
66 targeted full-length protein. To overcome this issue, companies have developed  
67 monoclonal anti-AT<sub>1</sub> receptor antibodies presented as more specific.

68 In the present work, we evaluated the specificity of the Santa Cruz sc-57036  
69 monoclonal anti-AT<sub>1</sub> receptor antibody.

70 Human Embryonic Kidney (HEK293) cells, that lacks endogenous AT<sub>1</sub> receptor  
71 expression, were transfected with a plasmid containing the human AT<sub>1</sub> receptor tagged  
72 at its extracellular N-terminus with the enhanced green fluorescent protein (EGFP-

73 AT<sub>1</sub>). First, we assessed the robustness of our model by verifying the functionality of  
74 the fluorescent receptor and its localization. Second, we tested the specificity of the  
75 monoclonal sc-57036 antibody by Western blot and immunofluorescence. We  
76 compared our data to the ones obtained using the polyclonal sc-1173 antibodies that  
77 have already been described as non-specific. Our results indicate that the Santa Cruz  
78 anti-AT<sub>1</sub> receptor monoclonal antibody sc-57036 does not label human AT<sub>1</sub> receptor.  
79 Moreover we confirmed the aspecificity of the polyclonal sc-1173 antibodies.

## 80 MATERIALS AND METHODS

### 81 Cell culture and transfection

82 HEK 293 (Human Embryonic Kidney) cells were cultured to ~80% confluence in T-75-  
83 cm<sup>2</sup> flasks in MEM with Earle's salt supplemented with 10% fetal calf serum, 2 mM  
84 glutamine and 1% antibiotics (penicillin/streptomycin) and re-plated twice a week. The  
85 expression vector pIRES (Clontech) encoding for the fluorescent EGFP-human AT<sub>1</sub>  
86 receptor was a gift from Prof Haiech and Prof Kilhoffer (University of Strasbourg) and  
87 PCBIS UMS3286 CNRS-University of Strasbourg.

88 Cells stably expressing human EGFP-AT<sub>1</sub> receptors were, in addition, cultured with  
89 600µg/ml G418 (Invitrogen)

90

### 91 Antibodies

92 EGFP was detected with mouse monoclonal anti-GFP (A11120 Life technologies) and  
93 goat polyclonal anti-GFP directly coupled to Horse Radish Peroxidase HRP (AB6663,  
94 ABCAM). Tested antibodies against AT<sub>1</sub> receptors were the anti-AT<sub>1</sub> N-10 (Santa Cruz  
95 sc-1173 batch number C2415) and the anti-AT<sub>1</sub> TONI-1 (Santa Cruz sc-57036 batch  
96 number I2111). The anti-AT<sub>1</sub> N-10 is a rabbit polyclonal IgG with an epitope mapping  
97 within the N-terminal extracellular domain of AT<sub>1</sub> receptor of human origin. It has just  
98 been discontinued. The anti-AT<sub>1</sub> TONI-1 is a mouse monoclonal antibody raised  
99 against a GST fusion protein corresponding to amino acids 297-356 of AT<sub>1</sub> receptor of  
100 human origin. Both antibodies are recommended by the manufacturer for detection of  
101 AT<sub>1</sub> receptor of mouse, rat and human origin by Western blot, immunoprecipitation,  
102 immunofluorescence and ELISA.

103

104

105 **Calcium mobilization assay**

106 Cells were cultured for three days in T10, then loaded with 2.5  $\mu$ M Fluo-4 AM  
107 (Molecular Probes) for 1 h. Cells were rinsed in PBS, collected in PBS-5mM EDTA and  
108 suspended in 9 mL Hepes-BSA buffer (10 mM HEPES pH 7.4, 137.5 mM NaCl, 1.25  
109 mM MgCl<sub>2</sub>, 1.25 mM CaCl<sub>2</sub>, 6 mM KCl, 5.6 mM glucose, 0.4 mM NaH<sub>2</sub>PO<sub>4</sub>, 0,1%  
110 Bovine Serum Albumine). Cells were loaded in 96-well plates (Greiner 655090, 100  
111  $\mu$ L/well) and centrifuged for 3 min at 800 rpm. AngII-evoked increases in intracellular  
112 calcium were recorded over time using a Flexstation III (Molecular Devices, Sunnyvale,  
113 CA, USA) (3 sec intervals over 220 sec) at 37°C through fluorescence emission at 520  
114 nm (excitation at 485 nm). Peak response amplitudes were normalized to basal  
115 fluorescence levels. For each concentration of the agonist, we determined the maximal  
116 value of the increase in calcium concentration in order to build concentration response  
117 curves to AngII.

118

119 **Cell surface expression of the fluorescent EGFP-AT<sub>1</sub> receptor**

120 Cells were cultured for two days in T10, then rinsed in PBS, collected in PBS-5mM  
121 EDTA. Immunolabelling of EGFP-AT<sub>1</sub> receptors expressed at the cell surface was  
122 done on intact cells (approximately 1 million cells) pre-incubated in 1 mL PBS-1% BSA  
123 on ice for 1 hour, then labelled using mouse monoclonal anti-GFP (A11120 Life  
124 technologies 1/100 dilution in PBS 1% BSA) for 30 min on ice and secondary labelling  
125 done using a R-phycoerythrin-conjugated AffiniPure F(ab')<sub>2</sub> fragment goat anti-mouse  
126 IgG (1/100 dilution). EGFP fluorescence and phycoerythrin (PE) staining were  
127 detected by flow cytometric analysis (20,000 cells per sample) on a cytometer  
128 (FACSCalibur, Becton-Dickinson).

129

130 **Western blotting to detect the EGFP-tagged AT<sub>1</sub> receptor**

131 Cells were cultured for two days in 6-well plates. Cell lysates were performed in 250  
132 µL RIPA buffer (20 mM de Tris-HCl pH 7.4, 150 mM de NaCl, 1% de NP40, 0.25% de  
133 Na-deoxycholate, 0.1% SDS, Complete protease inhibitor EDTA-free (Roche)  
134 according to Lecat et al. (2015). In order to concentrate the receptors, in some  
135 experiments, cell lysates underwent immunoprecipitation. Briefly 450 µg of proteins  
136 were exposed to mouse monoclonal anti-GFP (A11120 Life technologies, 1:100)  
137 overnight on a wheel at 4°C before coupling to Protein A sepharose 4B (Life  
138 technologies) for 2 hours at 4°C the following day. Protein A / antibodies complexes  
139 were washed 3 times in 1 mL RIPA buffer by successive centrifugations at 2000 rpm  
140 for 1 min at 4°C before being suspended in 2X Laemmli buffer.

141 Proteins were not heated and directly separated on 10 % acrylamide SDS-PAGE gel  
142 electrophoresis. Proteins were then transferred onto PVDF polyvinyl difluoride  
143 membranes for 2 hours and western blotting was performed according to Lecat et al.  
144 (2015). Concentrations of antibodies were: polyclonal rabbit anti-AT<sub>1</sub> receptor (Santa  
145 Cruz sc-1173) 1:500 and monoclonal mouse anti-AT<sub>1</sub> receptor (Santa Cruz sc-57036)  
146 1:500. PVDF membranes were washed in acid buffer for desorbing the antibodies and  
147 reprobed with goat polyclonal anti-GFP directly coupled to Horse Radish Peroxidase  
148 HRP (AB6663, ABCAM) 1:25 000. Secondary anti-rabbit HRP and anti-mouse HRP  
149 antibodies were used at a dilution of 1:10 000 and 1:5 000 respectively (Immuno  
150 Research Laboratories).

151

152 **Immunofluorescence**

153 Cells were cultured for 24 hours in 24-well plates on 12-mm in diameter coverslips  
154 coated with rat type I collagen. Cells were fixed in PBS containing 4%



155 paraformaldehyde, rinsed twice with PBS and exposed 15 min to 50 mM ammonium  
156 chloride in order to quench remaining paraformaldehyde fluorescence. Cells were then  
157 rinsed three additional times in PBS. Cells exposed to the monoclonal sc-57036  
158 antibody were permeabilized 3 min in PBS containing 0,1% Triton X-100.  
159 Immunolabelling was performed in PBS-0.2% BSA with either polyclonal anti-AT<sub>1</sub>  
160 receptor (sc-1173, 1:50), monoclonal anti-AT<sub>1</sub> receptor (sc-57036, 1:50) or monoclonal  
161 anti-GFP (A11120, 1:100). Cells were washed 3 times in PBS-0.2% BSA and  
162 incubated further with either secondary goat anti-rabbit or goat anti-mouse antibodies  
163 coupled to Alexa 594 (Invitrogen ;1:200). After further washes in PBS, coverslips were  
164 mounted onto slides using an anti-fading agent (Mowiol; Calbiochem). Image  
165 acquisition was performed with a fluorescent microscope LEICA (motorized  
166 microscope Leica DM5500B together with cold-camera Leica CTR 6000). Figures were  
167 created with FigureJ.

## 168 RESULTS

### 169 ***Validation of the experimental model: in transfected cells, fluorescently-labelled*** 170 ***AT<sub>1</sub> receptors are functional and localized at the plasma membrane***

171 In cells expressing the fluorescently labelled EGFP-AT<sub>1</sub>, the receptor is fused at its  
172 extracellular N-terminus with the fluorophore (Fig. 1A). We verified that the receptor  
173 was active in these cells by measuring calcium responses to AngII. While the parental  
174 HEK293 cells did not respond to the agonist, showing that the receptor is not  
175 endogenously expressed, EGFP-AT<sub>1</sub> cells gave a nice AngII dose-response with an  
176 EC<sub>50</sub> around  $2 \cdot 10^{-8}$  mol/L AngII (Fig. 1B). Using fluorescence cell sorting analysis, we  
177 have controlled that all the cells were expressing the fluorescent receptor (as detected  
178 by the peak of EGFP fluorescence as compared to non-transfected cells, Fig. 1C, left)  
179 and that the receptor was properly localized at the cell surface (as detected by surface  
180 labelling with anti-GFP antibodies followed by red fluorescent secondary antibody  
181 labelling, Fig. 1C, right).

182

### 183 ***Polyclonal and monoclonal anti-AT<sub>1</sub> antibodies detected bands in Western blot*** 184 ***whether the receptor was expressed or not***

185 The expected size of the fusion protein, EGFP-AT<sub>1</sub> receptor, estimated from the amino-  
186 acid sequence, is 73 kDa. The estimation does not take into account post-translational  
187 modifications such as *N*-glycosylation. In Western blot of total cell extracts (40 µg of  
188 proteins), both monoclonal sc-57036 and polyclonal sc-1173 antibodies detected  
189 bands whether the fluorescently labelled receptor was expressed or not (Fig. 2A; total  
190 lysates). Reprobing of the membrane with monoclonal anti-GFP antibody specifically  
191 revealed a major band in HEK-EGFP-AT<sub>1</sub> transfected cells (but not in parental cells)  
192 around 90 kDa corresponding to the tagged-receptor. A smaller band around 40 kDa

193 is also detected with the anti-GFP, that could correspond to degraded receptors mainly  
194 with the EGFP tag left.

195 In a second attempt to detect the receptors with anti-AT<sub>1</sub> receptor antibodies, we  
196 performed immunoprecipitations of 450 µg of protein extracts with monoclonal anti-  
197 GFP antibody in order to concentrate the receptors prior to Western blotting. Again,  
198 polyclonal sc-1173 and monoclonal sc-57036 revealed unspecific bands in both non-  
199 transfected and HEK-EGFP-AT<sub>1</sub> transfected cell lysates (Fig. 2A; anti-GFP-  
200 immunoprecipitated lysates). Reprobing the membrane with anti-GFP-HRP antibody  
201 specifically revealed the EGFP-AT<sub>1</sub> receptor bands only in cells expressing the  
202 fluorescently-labelled receptor (Fig. 2A; immunoprecipitated lysates).

203

204 ***Both anti-AT<sub>1</sub> receptor antibodies failed to recognize the receptor by***  
205 ***immunofluorescence***

206 Next, we tested the antibodies in immunofluorescence labelling experiments on EGFP-  
207 tagged AT<sub>1</sub> receptor expressing cells. Cells cultured on coverslips were labelled either  
208 with anti-GFP or anti-AT<sub>1</sub> receptors antibodies, followed by a red fluorescent  
209 secondary antibody detection. Using epifluorescence microscopy, images collected in  
210 the green channel to directly visualize the fluorescence of EGFP showed a localization  
211 of the receptor principally at the cell plasma membrane and in some intracellular  
212 perinuclear compartments (Fig. 2B-a, 2B-d, 2B-g).

213 Staining with the monoclonal GFP antibody on non-permeabilized cells revealed only  
214 the plasma membrane localization of the receptor (Fig. 2B-b).

215 When using the polyclonal anti-AT<sub>1</sub> receptor antibodies, no plasma membrane staining  
216 was detected (Fig. 2B-e). We obtained similar results with the monoclonal anti-AT<sub>1</sub>  
217 receptor antibody. For this antibody, we performed permeabilization of the cells due to

218 the localization of the epitope in the C-terminus tail of the receptor. While, in the green  
219 channel, the receptor could still be detected by the direct fluorescence of EGFP (Fig.  
220 2B-g), no specific labelling with the monoclonal anti-AT<sub>1</sub> receptor antibody in the red  
221 channel (Fig. 2B-h) and no colocalization in the overlay channel were visible (Fig. 2B-  
222 i).

223 Therefore, in accordance with our results obtained by Western blot, monoclonal and  
224 polyclonal anti-AT<sub>1</sub> receptors antibodies also failed to recognize AT<sub>1</sub> receptors by  
225 immunofluorescence.

## 226 **DISCUSSION**

227 Here we bring the first evidence of the lack of specificity of the Santa Cruz monoclonal  
228 anti-AT<sub>1</sub> antibody sc-57036 as it failed to specifically recognize the AT<sub>1</sub> receptor. In the  
229 present work we used an heterologous model of human AT<sub>1</sub> receptors expression in  
230 which the receptor is tagged with the EGFP fluorescent protein at its extracellular N-  
231 terminal domain. Before assessing the specificity of anti-AT<sub>1</sub> receptor antibodies, we  
232 first evaluated the robustness of our model. HEK cells stably expressed the EGFP-AT<sub>1</sub>  
233 receptors homogeneously in the cell population. The receptors were properly localized  
234 at the cell surface and functional.

235

236 We confirm here the aspecificity of the AT<sub>1</sub> receptor polyclonal antibodies sc-1173,  
237 since bands were revealed by Western blot in all lysates whether AT<sub>1</sub> receptor was  
238 present or not. We obtained the same results with the AT<sub>1</sub> receptor monoclonal  
239 antibody sc-57036. Moreover, both AT<sub>1</sub> receptor antibodies failed to recognize the  
240 receptor in immunofluorescence labelling assays. To our knowledge, this is the first  
241 report questioning the specificity of Santa Cruz monoclonal AT<sub>1</sub> receptor antibody sc-  
242 57036. Already used in 10 publications (including three in 2017 and one in 2018) (Filice  
243 et al. 2017; Yim et al. 2017; Ferrão et al. 2017; Sinphitukkul et al. 2018), this antibody  
244 that lacks specificity could lead to false positive staining on tissue or primary cell culture  
245 and therefore misinterpretations.

246

247 Concerning the sc-1173 antibodies, our results are in accordance with the ones  
248 obtained by Benicky et al. (2012). They tested 6 commercially available anti-AT<sub>1</sub>  
249 receptor antibodies (including sc-1173) by Western blot and immunofluorescence. All  
250 of them failed to recognize specifically the receptor. First, they assessed the

251 robustness of their models (AT<sub>1A</sub> knock-out mice and rat hypothalamic 4B cells) by  
252 verifying the lack of expression of AT<sub>1</sub> receptor in both models using radioligand  
253 binding assays. Second, they compared the immunoreactivity of the antibodies in  
254 knock-out tissues and in cells transfected or not with AT<sub>1</sub> receptor. The six antibodies  
255 (including sc-1173) displayed very different pattern and intensity of immunoreactivity.  
256 But all tested antibodies gave signals in tissues from AT<sub>1A</sub> knock-out mice and non-  
257 transfected 4B cells. Despite this first report of aspecificity, the sc-1173 antibodies  
258 were still widely used in the literature up to now (Rizzetti et al. 2018; Zhao et al. 2018;  
259 Ribeiro et al. 2018) and it has just been discontinued.

260

261 Since antibodies directed against GPCR have been widely criticized for their lack of  
262 specificity, a correct validation of the used antibodies should be provided by the  
263 authors and requested by journals editors. Use of blocking peptide is a weak proof of  
264 specificity and using tagged receptors is a more reliable alternative method. Authors  
265 could also rely on one of the four criteria proposed by Michel et al. (2009) to  
266 demonstrate specific immunolabelling of receptors in tissues: a) disappearance of  
267 staining in knock-out animals of the target receptor, b) reduction of staining upon  
268 knock-down approaches such as siRNA treatment, c) selectivity of staining in  
269 immunoblots or immunocytochemistry for the target receptor vs related subtypes when  
270 expressed in the same cell line and/or d) antibodies raised against multiple distinct  
271 epitopes of a receptor yielding very similar staining patterns.

272

273 Given the issues concerning GPCR antibody specificity, the use of new tools to detect  
274 these membrane proteins is thus essential. Single-domain antibody (or nanobody)  
275 arouse great interest in the scientific community. Indeed, they show a promising

276 potential for research or therapeutic (Rasmussen et al. 2011; Maussang et al. 2013).  
277 They have smaller sizes (around 15 kDa vs 150 kDa for a classical antibody), they can  
278 be expressed intracellularly, they can display higher affinity and specificity and they  
279 have lower cost of production. Hence, the emergence of nanobodies is likely to replace  
280 actual existing polyclonal and monoclonal antibodies to ensure a reliable detection of  
281 GPCR proteins.

282 In conclusion, we demonstrate here that the monoclonal AT<sub>1</sub> receptor antibody sc-  
283 57036 should be added to the long list of non-specific antibodies targeting GPCRs.

284 **ABBREVIATIONS**

285 AngII: angiotensin II

286 AT<sub>1</sub>: angiotensin II type 1 receptor

287 AT<sub>2</sub>: angiotensin II type 2 receptor

288 EGFP: enhanced green fluorescent protein

289 HEK293: human embryonic kidney cell

290 GPCR: G protein-coupled receptor

291 PE: phycoerythrin

292 PBS: phosphate buffered saline



293 **AUTHORS CONTRIBUTION**

294 SL conceived and designed the experiments. MLB and SL conducted the experiments.

295 MLB, IL, FD, SL analyzed data and wrote the manuscript. All the authors read and

296 approved the manuscript.

297 **REFERENCES**

298

- 299 Ahad A, Raish M, Al-Jenoobi FI, Al-Mohizea AM (2018) Sorbitane Monostearate and  
300 Cholesterol based Niosomes for Oral Delivery of Telmisartan. *Curr Drug Deliv*  
301 15:260–266. doi: 10.2174/1567201814666170518131934
- 302 Beermann S, Seifert R, Neumann D (2012) Commercially available antibodies  
303 against human and murine histamine H-receptor lack specificity. *Naunyn*  
304 *Schmiedebergs Arch Pharmacol* 385:125–135. doi: 10.1007/s00210-011-0700-4
- 305 Benicky J, Hafko R, Sanchez-Lemus E, et al (2012) Six commercially available  
306 angiotensin II AT1 receptor antibodies are non-specific. *Cell Mol Neurobiol* 32:1353–  
307 1365. doi: 10.1007/s10571-012-9862-y
- 308 Bodei S, Arrighi N, Spano P, Sigala S (2009) Should we be cautious on the use of  
309 commercially available antibodies to dopamine receptors? *Naunyn Schmiedebergs*  
310 *Arch Pharmacol* 379:413–415. doi: 10.1007/s00210-008-0384-6
- 311 Cécyre B, Thomas S, Ptito M, et al (2014) Evaluation of the specificity of antibodies  
312 raised against cannabinoid receptor type 2 in the mouse retina. *Naunyn*  
313 *Schmiedebergs Arch Pharmacol* 387:175–184. doi: 10.1007/s00210-013-0930-8
- 314 Chao Y, Zhu L, Qu X, et al (2017) Inhibition of angiotensin II type 1 receptor  
315 reduced human endothelial inflammation induced by low shear stress. *Exp Cell Res*  
316 360:94–104. doi: 10.1016/j.yexcr.2017.08.030
- 317 Ferrão FM, Cardoso LHD, Drummond HA, et al (2017) Luminal ANG II is internalized  
318 as a complex with AT1R/AT2R heterodimers to target endoplasmic reticulum in LLC-  
319 PK1 cells. *Am J Physiol Renal Physiol* 313:F440–F449. doi:  
320 10.1152/ajprenal.00261.2016
- 321 Filice M, Amelio D, Garofalo F, et al (2017) Angiotensin II dependent cardiac  
322 remodeling in the eel *Anguilla anguilla* involves the NOS/NO system. *Nitric Oxide Biol*  
323 *Chem* 65:50–59. doi: 10.1016/j.niox.2017.02.007
- 324 Hafko R, Villapol S, Nostramo R, et al (2013) Commercially Available Angiotensin II  
325 At2 Receptor Antibodies Are Nonspecific. *PLoS ONE* 8:. doi:  
326 10.1371/journal.pone.0069234
- 327 Herrera M, Sparks MA, Alfonso-Pecchio AR, et al (2013) Lack of specificity of  
328 commercial antibodies leads to misidentification of angiotensin type 1 receptor  
329 protein. *Hypertens Dallas Tex* 1979 61:253–258. doi:  
330 10.1161/HYPERTENSIONAHA.112.203679
- 331 Ishikane S, Hosoda H, Nojiri T, et al (2018) Angiotensin II promotes pulmonary  
332 metastasis of melanoma through the activation of adhesion molecules in vascular  
333 endothelial cells. *Biochem Pharmacol*. doi: 10.1016/j.bcp.2018.04.012
- 334 Lecat S, Belemnaba L, Galzi J-L, Bucher B (2015) Neuropeptide Y receptor mediates  
335 activation of ERK1/2 via transactivation of the IGF receptor. *Cell Signal* 27:1297–  
336 1304. doi: 10.1016/j.cellsig.2015.03.016
- 337 Liu C-H, Gong Z, Liang Z-L, et al (2017) Arrestin-biased AT1R agonism induces  
338 acute catecholamine secretion through TRPC3 coupling. *Nat Commun* 8:14335. doi:  
339 10.1038/ncomms14335
- 340 Maussang D, Mujić-Delić A, Descamps FJ, et al (2013) Llama-derived single variable

341 domains (nanobodies) directed against chemokine receptor CXCR7 reduce head and  
342 neck cancer cell growth in vivo. *J Biol Chem* 288:29562–29572. doi:  
343 10.1074/jbc.M113.498436

344 Michel MC, Wieland T, Tsujimoto G (2009) How reliable are G-protein-coupled  
345 receptor antibodies? *Naunyn Schmiedebergs Arch Pharmacol* 379:385–388. doi:  
346 10.1007/s00210-009-0395-y

347 Oestreicher EM, Guo C, Seely EW, et al (2006) Estradiol increases proteinuria and  
348 angiotensin II type 1 receptor in kidneys of rats receiving L-NAME and angiotensin II.  
349 *Kidney Int* 70:1759–1768. doi: 10.1038/sj.ki.5001897

350 Rasmussen SGF, Choi HJ, Fung JJ, et al (2011) Structure of a nanobody-stabilized  
351 active state of the  $\beta$ 2 adrenoceptor. *Nature* 469:175–181. doi: 10.1038/nature09648

352 Ribeiro VS, Cabral EV, Vieira LD, et al (2018) Perinatal  $\alpha$ -tocopherol overload  
353 programs alterations in kidney development and renal angiotensin II signaling  
354 pathways at birth and at juvenile age: Mechanisms underlying the development of  
355 elevated blood pressure. *Biochim Biophys Acta*. doi: 10.1016/j.bbadis.2018.04.007

356 Rizzetti DA, da Silva TM, Escobar AG, et al (2018) Mercury-induced vascular  
357 dysfunction is mediated by angiotensin II AT-1 receptor upregulation. *Environ Res*  
358 162:287–296. doi: 10.1016/j.envres.2018.01.026

359 Sinphitukkul K, Manotham K, Eiam-Ong S, Eiam-Ong S (2018) Nongenomic action of  
360 aldosterone on colocalization of angiotensin II type 1 and type 2 receptors in rat  
361 kidney. *J Histotechnol* 0:1–8. doi: 10.1080/01478885.2018.1438756

362 Yim HE, Yoo KH, Bae IS, Hong YS (2017) Early Treatment With Enalapril and Later  
363 Renal Injury in Programmed Obese Adult Rats. *J Cell Physiol* 232:447–455. doi:  
364 10.1002/jcp.25444

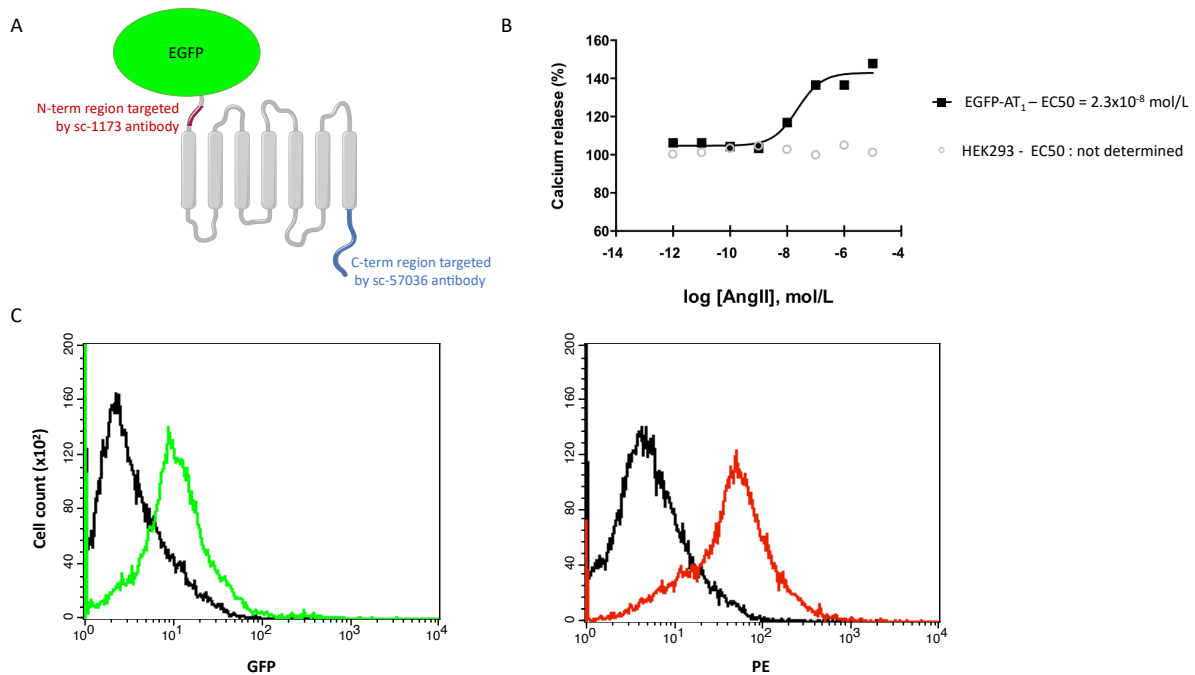
365 Young BM, Nguyen E, Chedrawe MAJ, et al (2017) Differential Contribution of  
366 Transmembrane Domains IV, V, VI, and VII to Human Angiotensin II Type 1  
367 Receptor Homomer Formation. *J Biol Chem* 292:3341–3350. doi:  
368 10.1074/jbc.M116.750380

369 Yu W, Hill WG (2013) Lack of specificity shown by P2Y6 receptor antibodies. *Naunyn*  
370 *Schmiedebergs Arch Pharmacol* 386:885–891. doi: 10.1007/s00210-013-0894-8

371 Zhao Y, Zhu Q, Sun S, et al (2018) Renal transplantation increases angiotensin II  
372 receptor-mediated vascular contractility associated with changes of epigenetic  
373 mechanisms. *Int J Mol Med* 41:2375–2388. doi: 10.3892/ijmm.2018.3435

374

375 **FIGURES**



376

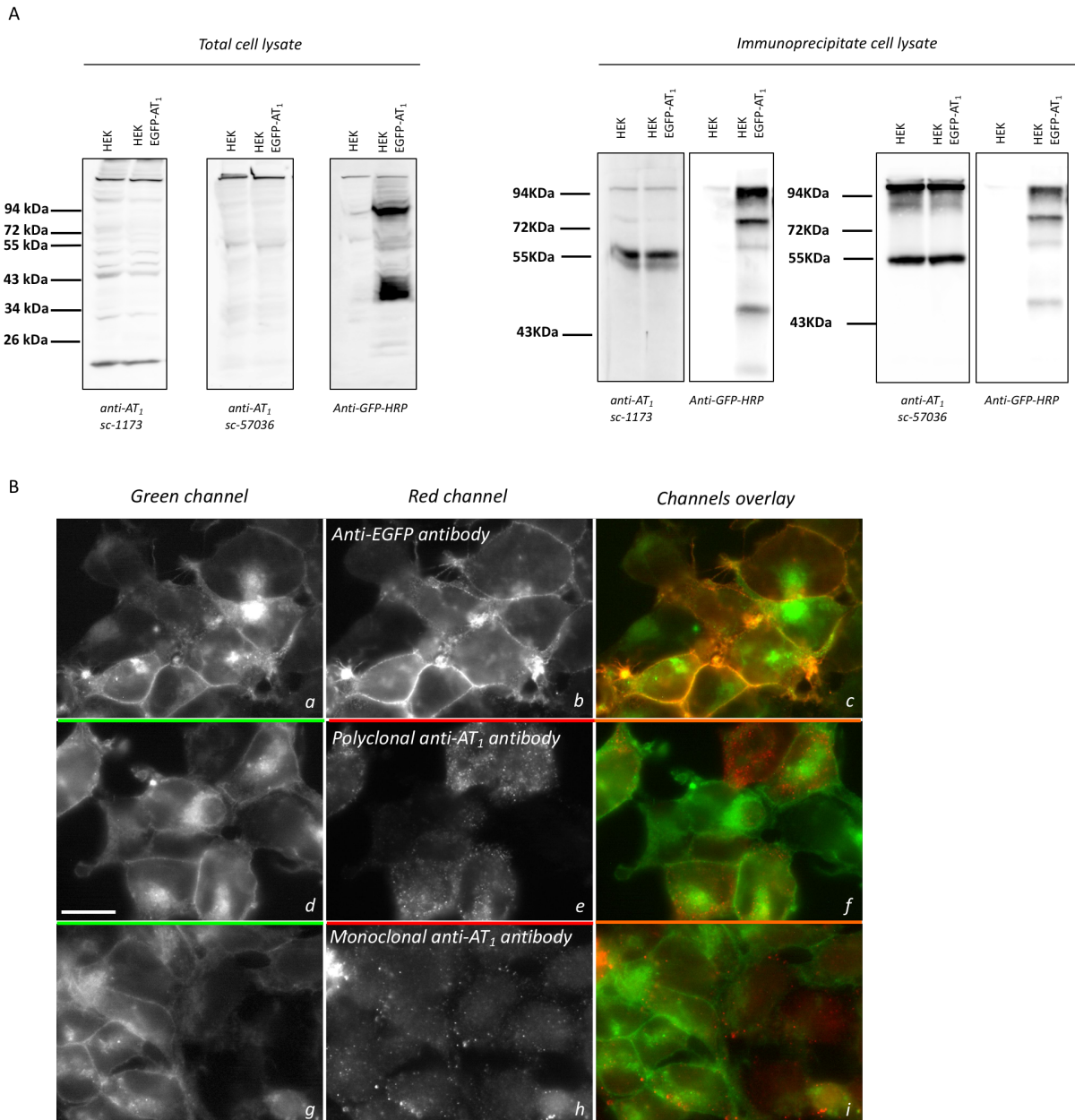
377 **Figure 1. In EGFP-AT<sub>1</sub> transfected cells, AT<sub>1</sub> receptor is properly localized at the**  
 378 **cell surface**

379 A - Schematic view of the fusion protein EGFP-AT<sub>1</sub> receptor. The EGFP fluorophore is  
 380 localized in the extracellular N-terminal part of the receptor. The sc-1173 polyclonal  
 381 anti-AT<sub>1</sub> receptor targets the short N-terminal domain of the receptor while the epitope  
 382 for the sc-57036 monoclonal anti-AT<sub>1</sub> receptor encompassed the whole C-terminal tail  
 383 of the receptor.

384 B – HEK293 and EGFP-AT<sub>1</sub> transfected cells were exposed to Angiotensin II (AngII ;  
 385 10<sup>-12</sup> to 10<sup>-4</sup> mol/L). AngII-evoked increases in intracellular calcium were recorded over  
 386 time using a Flexstation III (3 sec intervals over 220 sec) at 37°C through fluorescence  
 387 emission at 520 nm (excitation at 485 nm). Peak response amplitudes were normalized  
 388 to basal fluorescence levels. Each point represents the maximal value at 520 nm for a  
 389 given AngII concentration.

390 C - The cell population expressing the EGFP-AT<sub>1</sub> receptors was compared to non-

391 transfected cells by fluorescence-activated cell sorting. Left panel: Histogram of cells  
392 expressing the GFP fluorescence (green line: cells expressing stably the EGFP-AT<sub>1</sub>  
393 receptors, black line: non-transfected HEK293 cells). Right panel: Histogram of cells  
394 labelled with phycoerythrin (PE): intact cells were stained with anti-GFP antibodies and  
395 secondary phycoerythrin-labeled antibodies (PE). Fluorescence intensities of non-  
396 transfected HEK cells (black line) and cells expressing stably the EGFP-AT<sub>1</sub> receptors  
397 (red line).



398

399 **Figure 2. Monoclonal and polyclonal anti-AT<sub>1</sub> receptor antibodies failed to**  
 400 **recognize EGFP-AT<sub>1</sub> receptor in both Western blot and immunofluorescence**  
 401 **assays**

402 A - Immunoblot of total cell lysates (left – 40 µg of proteins) or of anti-GFP  
 403 immunoprecipitated material (right – 450 µg of proteins) of non-transfected HEK293  
 404 cells and of cells expressing stably the EGFP-AT<sub>1</sub> receptors. Proteins were revealed  
 405 with either polyclonal anti-AT<sub>1</sub> sc-1173, monoclonal anti-AT<sub>1</sub> sc-57036 or anti-GFP-

406 HRP antibodies. Anti-GFP antibody revealed bands only in cells expressing the EGFP-  
407 AT<sub>1</sub> receptor whereas sc-1173 and sc-57036 anti-AT<sub>1</sub> antibodies revealed unspecific  
408 bands whether the receptor had been transfected or not.

409 B - Antibodies immunolabelling on EGFP-tagged AT<sub>1</sub> cells. (*a, d, g*) Images collected  
410 in the green channel using epifluorescence microscopy showing the fluorescence of  
411 the EGFP-tagged receptor which is localized principally at the cell plasma membrane  
412 and in some perinuclear compartments. (*b, e, h*) Images collected in the red channel,  
413 stained with primary antibodies directed against GFP epitope in *b*, or AT<sub>1</sub> receptor (*e*,  
414 sc-1173, *h*, sc-57036) followed by a red secondary antibody. Plasma membrane  
415 localization of the receptor and colocalization with the GFP signal (displayed in the  
416 channel overlay) is only detected with the anti-GFP labelling (*b* and *c* respectively),  
417 whereas no plasma membrane signal (*e* and *h*) or colocalization (*g* and *i*) could be  
418 detected when using anti-AT<sub>1</sub> antibodies. Scale bar is 10 μM.