

The Duration of Emotional Image Exposure Does Not Impact Anticipatory Postural Adjustments during Gait Initiation

Thierry Gélat, Laure Coudrat, Carole Ferrel-Chapus, Sylvie Vernazza-Martin

► **To cite this version:**

Thierry Gélat, Laure Coudrat, Carole Ferrel-Chapus, Sylvie Vernazza-Martin. The Duration of Emotional Image Exposure Does Not Impact Anticipatory Postural Adjustments during Gait Initiation. Behavioral and Brain Sciences, Cambridge University Press (CUP), 2018, 8 (11), pp.195. 10.3390/brainsci8110195 . hal-02012232

HAL Id: hal-02012232

<https://hal.univ-lorraine.fr/hal-02012232>

Submitted on 4 Sep 2019

HAL is a multi-disciplinary open access archive for the deposit and dissemination of scientific research documents, whether they are published or not. The documents may come from teaching and research institutions in France or abroad, or from public or private research centers.

L'archive ouverte pluridisciplinaire **HAL**, est destinée au dépôt et à la diffusion de documents scientifiques de niveau recherche, publiés ou non, émanant des établissements d'enseignement et de recherche français ou étrangers, des laboratoires publics ou privés.

The Duration of Emotional Image Exposure Does Not Impact Anticipatory Postural Adjustments during Gait Initiation

Thierry Gélât ¹, Laure Coudrat ², Carole Ferrel-Chapus ¹ and Sylvie Martin ¹

¹ Centre de recherche sur le sport et le mouvement, EA 2931, UFR STAPS Université Paris Ouest Nanterre, 200 avenue de la république 92001 Nanterre Cedex

² Université de Lorraine, Laboratoire Lorrain de Psychologie et Neurosciences de la Dynamique des Comportements, 2LPN, CEMA group (Cognition-EMotion-Action) (EA 7489), 57000 Metz, France

* Correspondence: gelat@parisnanterre.fr

Abstract: Previous studies have reported that anticipatory postural adjustments (APAs) associated with gait initiation are affected by emotion-eliciting images. This study examined the effect of the duration of exposure to emotional images on the APAs along the progression axis. From a standing posture, 39 young adults had to reach a table by walking (several steps) toward pleasant or unpleasant images, under two sets of conditions. In the short condition, the word “go” appeared on the image 500 ms after image onset and participants were instructed to initiate gait as soon as possible after the word go appeared. In the long condition, the same procedure was used but the word “go” appeared 3000 ms after image onset. Results demonstrated that the APAs were longer and larger for pleasant images than unpleasant ones, regardless of the condition (i.e. the duration of exposure to the images). In the same way, the peak of forward velocity of the centre of body mass (reached at the end of the first step) followed the same tendency. These results emphasized that APAs depended on image valence, but not on the duration of images exposure and were consistent with those of previous studies and the motivational direction hypothesis.

Keywords: Emotion; Gait initiation; Anticipatory Postural Adjustments; duration of images exposure

1. Introduction

It is well known that a voluntary movement needs to be coordinated with posture in order to be performed efficiently [1]. Indeed, the efficiency of the postural phase associated with an intended movement may be assessed via the spatial and temporal characteristics of anticipatory postural adjustments (APAs). From a general point of view, the latter are crucial for the control of balance during daily motor tasks to counteract the destabilizing effect induced by a predicted disturbance [2].

During gait initiation, the anticipatory phase begins at the first mechanical step of the movement and its role is to destabilize the whole body prior to the execution phase, beginning at heel-off by the stepping limb and ending at foot contact of this limb. Destabilization of the erect posture by APAs occurs by displacing the centre of pressure (CP) backwards and onto the stepping limb, enabling the centre of body mass (CM) to be propelled forwards and onto the stance limb. APAs are organized subcortically and the systems responsible for their execution are separate from those that control the goal-directed voluntary movement [3]. In gait initiation, they are modulated according to the forthcoming requirements of the task, e.g. the gait velocity [4,5] or the balance requirements in the frontal plane [6].

APAs are also known to depend on the emotional context during gait initiation. Emotion is considered to prime the body for action [7]. According to the biphasic theory of emotion, emotion is fundamentally organized around two basic motivational systems: the appetitive and defensive priming approach and avoidance behaviours respectively [8]. Using emotional images, it was

reported that when participants had to initiate forward gait as soon as possible, at image onset [9] or offset, i.e. when the image presented for a variable 2-4s duration, disappeared [10], APAs on the progression axis were greater with pleasant than with unpleasant images. These results supported the motivational direction hypothesis [8], emphasizing that approach movement towards a pleasant stimulus was facilitated, whereas approach movement towards an unpleasant stimulus was impeded. We will call a valence effect the result that APAs were larger with pleasant images, as compared to unpleasant images.

Event-related potential studies provided evidence that the valence of an emotional image is processed very quickly (100-250ms), whereas arousal is processed later (250-850ms) [11]. However, one may wonder whether duration of emotional image exposure for longer than this range interacts with gait parameters. To date, little is known on how and why the effect of image valence evolves over time. For instance, we know during gait initiation that reaction time is shorter with pleasant than unpleasant images at image onset [9,12] or when the image exposure duration was short (0.5s) [13]. In contrast, the reverse was found at image offset (the image was presented for 2-4s) [10] or there was no difference between both image categories when the image exposure duration was long (3s) [13].

Comparing an image onset situation to an offset one during gait initiation allowed the examination of the impact of the duration of emotional image exposure on APAs. Using a single step, it was reported that the backward shift of CP (APAs amplitude) during the anticipatory phase was found to be larger at image offset (the image was presented for a variable 2-5s duration) than image onset [14]. Recently, it was reported that when the delay between image onset and the imperative "go" was either 0.5s (short condition) or 3s (long condition), the initial posture preceding the movement was modified in the long condition as compared to the short one [13]. Indeed, it was found in this study that the whole body leaned forwards and onto the stance limb prior to initiating the movement during the long (but not the short) condition, regardless of the image's valence. Prior to gait initiation, a forward leaning of the body usually aims to increase the peak of CM velocity, as already reported [4,15]. Hence, we reasoned that APAs on the progression axis might be larger from the short to the long condition. We will call a condition effect the result that APAs on the progression axis would be larger when the body leaned forwards.

The main aim of this study was to examine whether the APAs on the anteroposterior axis during gait initiation were affected by the duration of emotional image exposure prior to the imperative "go". As in a previous study [13], we used a reaction time paradigm in which the delay between image onset and the imperative "go" was either 0.5s in the short condition or 3s in the long condition. Reaction time (RT) was measured to know whether results were in line with those found in a previous study [13]. We expected RT to be shorter in the long than in the short condition. Moreover we predicted it would be shorter with pleasant than with unpleasant images in the short condition but that no significant difference between both emotional categories would be found in the long condition. Concerning the APAs, one hypothesis was that they might be larger from the short to the long condition (i.e. a condition effect), because the body leaned forwards prior to the movement in the long condition. Alternatively, only a valence effect might be expected for APAs. As subcortical regions are responsible for the control of APAs in gait initiation, an automatic process may be assumed to be involved in this control. Moreover, APAs have been reported to be progressively constructed well in advance of the onset of the intended movement, when a high uncertainty in the timing of the imperative "go" was present [16]. Hence, they might be independent of the time preceding the imperative "go" and a condition effect would not be expected. Furthermore, as emotional stimuli have been reported to be processed automatically [17], the amplitude of APAs would be expected to be greater with pleasant than with unpleasant images, according to the motivational direction hypothesis.

2. Methods

2.1. Participants

Thirty nine young healthy adults (age 18-26 years, 22 women) recruited from the University of Paris Nanterre participated in this study. All were right handed, had normal or corrected-to-normal vision, were unaware of the purpose of the study and did not report any psychiatric disorders. The study conformed to the standards set by the Declaration of Helsinki and informed consent was obtained from all participants.

2.2. Experimental Protocol

We used a force platform (AMTI, 120 x 60 cm) that measured the three components of ground reaction forces (F_x , F_y and F_z) and moments (M_x , M_y and M_z). Participants stood on a force platform placed at the beginning of a 5 m long walkway ending at a white wall of the laboratory on which the emotion eliciting images (86 x 125 cm) were presented. The positioning of the feet allowed the first step to be performed on the platform and was marked to be used in all trials. On the medio-lateral axis, participants were instructed to place their feet on both sides of a line separating the platform into two equal parts. The distance between the feet had to not exceed the pelvis width. Participants had to walk toward an emotional image up to a table and click on the mouse situated on the table. It is noteworthy that no instruction was given to participants regarding gait velocity.

Two experimental conditions were tested. Each trial began with the presentation of a fixation cross on the screen for 2 s, followed by an image for 6 s. In the short condition, the word “go” appeared at the centre of the picture 0.5 s after image onset and participants were instructed to 1) look at the image for the entire time it was on the wall, 2) initiate gait with the right limb as soon as possible after the word go appeared and 3) reach the table to click on the mouse. In the long condition, the same procedure was used but the word “go” appeared 3 s after image onset.

2.3. Emotional Images

In each condition, participants viewed twenty images (10 pleasant and 10 unpleasant) selected from the international affective picture system (IAPS) [18]. As in a previous study [8], half of the pleasant and unpleasant images were low arousal (LA) and the other half were high arousal (HA), representing four affective categories: happy people for low arousal pleasant images, erotic for high arousal pleasant images, sad people for low arousal unpleasant images and attack for high arousal unpleasant images.¹ The normative valence of pleasant and unpleasant images differed significantly ($M = 7.23$, $SD = 0.49$ for pleasant images; $M = 2.38$, $SD = 0.40$ for unpleasant images). The normative arousal of both image categories was similar, depending only on its level (low/high) ($M = 4.98$, $SD = 0.53$ for LA pleasant images; $M = 6.35$, $SD = 0.26$ for HA pleasant images; $M = 5.09$, $SD = 0.41$ for LA unpleasant images; $M = 6.83$, $SD = 0.34$ for HA unpleasant images). A statistical analysis on the valence and arousal of the pictures in each condition was performed to ensure that no significant difference was found between both conditions. The task was performed using a go/no-go paradigm. The no-go response (i.e. do not move) was associated with the presentation of 14 neutral images, representing an object. Finally, each participant viewed 54 images that were randomly presented. E-prime 2.0 software (Psychology Software Tools, Pittsburg, PA) was used to control the visual stimuli presentation of each trial.

2.4. Data Reduction

All signals from the force platform were recorded at 1000 Hz for 8 s and synchronized with the images presentation procedure. These signals were filtered with a 10 Hz low-pass, fourth order, zero-lag Butterworth filter. Coordinates of CP on the medio-lateral (ML) (x_p) and anterior-posterior (AP) (y_p) directions were calculated from the ground reaction forces and the movements measured

1 IAPS images : LA pleasant : 2030, 2070, 2071, 2091, 2216, 2224, 2311, 2340, 2345, 8496 ; HA pleasant : 4607, 4608, 4611, 4643, 4660, 4670, 4676, 4677, 4694, 4695 ; LA unpleasant : 2095, 2141, 2455, 2703, 2799, 2800, 2900, 3230, 9041, 9421 ; HA unpleasant : 2811, 6210, 6230, 6250, 6260, 6300, 6313, 6350, 6370, 6510 ; neutral (nogo) : 7000, 7010, 7020, 7043, 7053, 7055, 7056, 7080, 7090, 7150, 7175, 7190, 7233, 7235.

by the force platform. The displacement of CP on AP direction was derived to obtain the CP velocity (y'_P). The onset of postural modifications along the AP (t_{0y}) axis was calculated as the time at which 10% of the first peak of y'_P was reached (Figure 1), as in a previous study [9]. It was noteworthy that 35 trials (4.6%) were rejected because either there was a considerable CP movement in the 500 ms window prior to image onset or, the t_{0y} value, corresponding to the reaction time (RT) defined as the delay between the onset of the imperative go (word "go") and t_{0y} (Figure 1), was less than 200ms or longer than 2000ms. The body's centre of mass (CM) acceleration on AP axis (y''_G) was obtained from Newton's law and the CM velocity (y'_G) axis was calculated by simple integration, by posing that y''_G and y'_G equalled zero at t_{0y} . That enabled the calculation of the peak of forward CM velocity, reached at the end of the first step. The times of toe off (TO_1) and foot contact (FC) of the stepping limb and that of toe off of the stance limb (TO_2) were obtained from the traces of x_P and y_P (Figure 1).

The initial posture (prior to image onset and the imperative "go") was characterized by the CP position in the AP direction. It corresponded to the mean CP position during the 500 ms period preceding image onset (initial phase) and during the 500 ms period preceding the imperative go (final phase). The values were expressed as a percentage of base of support length. 0% corresponded to a CP position under the heels and 100% to a CP position under the toes.

Traces of gait parameters

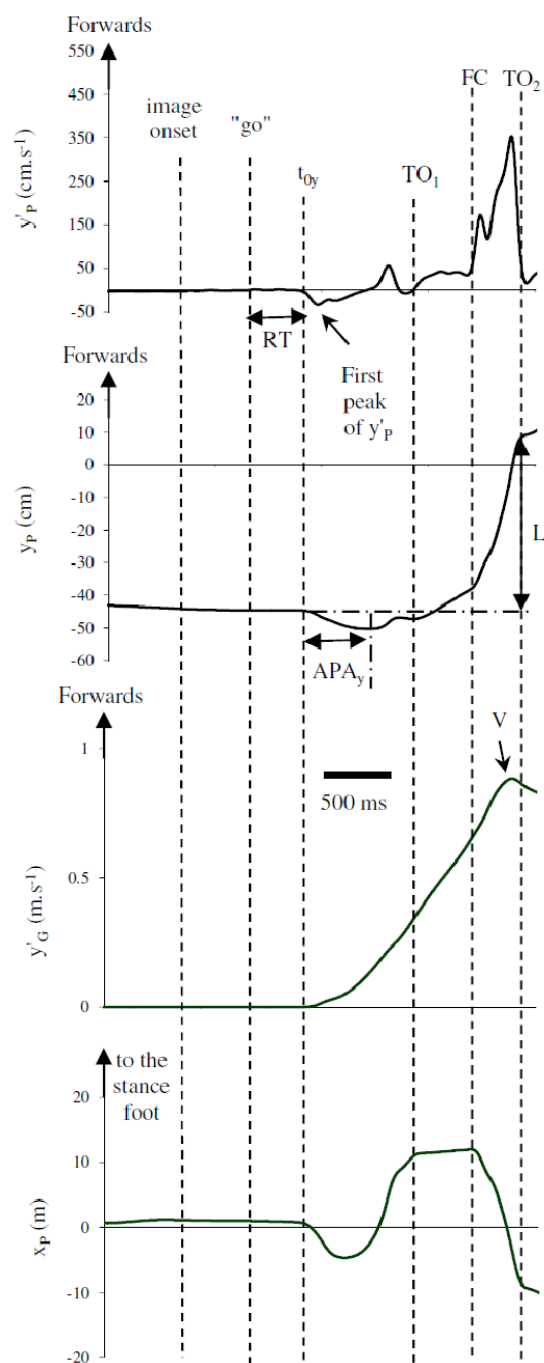


Figure 1. From top to bottom, traces of anteroposterior velocity (y'_p) and displacement (y_p) of CP, anteroposterior velocity of CM (y'_G) and mediolateral displacement of CP (x_p); one trial, one subject, during exposure of a pleasant image of the short condition. From top to bottom, the horizontal arrows correspond to the duration of anticipatory postural adjustments on the anteroposterior (APA_y) and the vertical arrow to the first step length (L).

2.5. Variables Analysed

The initial posture was analysed by measuring the CP position during the initial and final phases of both conditions. Reaction time (RT) was measured. The APAs duration along the AP axis corresponded to the time between t_{0y} and that of the maximal backward shift of CP ($t_{y_{Pmin}}$) and the APA amplitude corresponded to the initial maximal backward shift of CP (y_{Pmin}) (Figure 1). The peak

of forward CM velocity (V) and the time when it occurred (tV) were also analysed (Figure 1). The length of the first step was calculated as the AP displacement of CP between t_{0y} and the time of toe off of the stance foot (TO₂) (Figure 1). Lastly, the movement time was calculated as the time between t_{0y} and the time when the participant clicked on the mouse situated on the table.

2.6. Statistical Analysis

The initial posture was analysed using a 2 (Condition: short, long) × 2 (Valence: pleasant, unpleasant) × 2 (Arousal: high, low) × 2 (Phase: initial, final) analysis of variance with repeated measures on the four factors. We used a 2 (Condition: short, long) × 2 (Valence: pleasant, unpleasant) × 2 (Arousal: high, low) analysis of variance with repeated measures on the three factors to analyse the other dependent variables of this study. Post hoc analyses were conducted with the HSD Tukey test. For all analyses, the alpha level for statistical difference was set at 0.05.

3. Results

3.1. Reaction Time

As in a previous study [12], we found a significant main effect for Condition ($F(1,38) = 21.05$, $p < 0.001$, $\eta^2 = 0.356$); the participants were faster in the long than in the short condition. A significant main effect for Valence was also present ($F(1,38) = 8.29$, $p < 0.01$, $\eta^2 = 0.179$), indicating that participants were faster for pleasant than for unpleasant pictures. Importantly, a significant interaction between Condition and Valence ($F(1,38) = 12.09$, $p < 0.01$, $\eta^2 = 0.241$) was found. Post hoc analysis revealed that motor responses were significantly ($p < 0.001$) faster for pleasant (0.442 ± 0.083) than for unpleasant pictures (0.478 ± 0.104) in the short condition, but no significant ($p = 0.998$) difference was found in the long condition (0.402 ± 0.076 and 0.401 ± 0.079 s for pleasant and unpleasant pictures respectively).

3.2. Initial Posture

Regarding balance conditions prior to the imperative “go” (during the initial phase) on the AP axis, a significant main effect for Condition ($F(1,38) = 23.81$, $p < 0.001$, $\eta^2 = 0.385$) indicated that the CM position was further ahead in the long ($43.38 \pm 7.62\%$) than in the short ($42.11 \pm 7.41\%$) condition. There was also a main effect of Phase ($F(1,38) = 32.52$, $p < 0.001$, $\eta^2 = 0.461$) indicating that the CM position was further ahead during the final than during the initial phase. Importantly, an interaction between Condition and Phase ($F(1,38) = 37.60$, $p < 0.001$, $\eta^2 = 0.497$) showed that between the initial ($42.12 \pm 7.45\%$) and final ($42.09 \pm 7.40\%$) phases no change was observed in the short condition ($p = 0.999$), whereas the body was tilted forwards ($p < 0.001$) in the long condition. The values were $42.25 \pm 7.61\%$ and $44.51 \pm 7.49\%$ in the initial and final phase respectively. There was no effect of Valence.

3.3. APAs

The APA duration on the progression axis only showed a valence effect ($F(1,38) = 7.54$, $p < 0.01$, $\eta^2 = 0.165$) indicating that it was longer for pleasant than for unpleasant images (see t_{yPmin} in Table 1). Similarly, the APA amplitude only showed a valence effect ($F(1,38) = 35.39$, $p < 0.001$, $\eta^2 = 0.482$) for which it was larger for pleasant than for unpleasant images (see y_{Pmin} in Table 1).

3.4. CM Velocity

The peak of CM forward velocity only indicated a main effect of valence ($F(1,38) = 17.03$, $p < 0.001$, $\eta^2 = 0.309$), showing that it was larger for pleasant than for unpleasant images (Table 1). No effect was found in the time to reach the peak of CM forward velocity (tV) (Table 1).

Table 1: Mean and standard deviation of the parameters measured in both conditions with pleasant and unpleasant images.

Condition	Movement parameters			
	Short		Long	
Valence	Pleasant	Unpleasant	Pleasant	Unpleasant
t_{yPmin} (ms)	379 \pm 69	360 \pm 60	365 \pm 63	360 \pm 65
y_{Pmin} (cm)	-6.29 \pm 2.07	-5.88 \pm 2.25	-6.28 \pm 2.23	-5.84 \pm 2.20
V (m.s ⁻¹)	1.086 \pm 0.133	1.058 \pm 0.132	1.075 \pm 0.121	1.054 \pm 0.143
tv (s)	1.102 \pm 0.114	1.103 \pm 0.140	1.113 \pm 0.128	1.119 \pm 0.146
L (cm)	59.69 \pm 7.71	58.91 \pm 7.14	59.02 \pm 7.38	58.49 \pm 8.07
MT (s)	3.061 \pm 0.736	3.119 \pm 0.751	3.090 \pm 0.732	3.154 \pm 0.768

From top to below, t_{yPmin} is the APAs duration along the antero posterior axis, y_{Pmin} the amplitude of the maximal backward shift of CP, V the peak of CM forward velocity, tv the time for reaching the peak of forward CM velocity, L the length of the first step and MT the movement time and MT the movement time.

3.5. First Step Length

The length of the first step showed a valence effect ($F(1,38) = 6.00$, $p < 0.05$, $\eta^2 = 0.136$) indicating that it was larger for pleasant images as compared to unpleasant ones (Table 1).

3.6. Movement Time

A valence effect ($F(1,38) = 15.94$, $p < 0.001$, $\eta^2 = 0.295$) was found in the movement time showing that it was shorter for pleasant than for unpleasant images (Table 1).

4. Discussion

Using an RT paradigm with two conditions for which the delay between image onset and the imperative “go” was either short (0.5 s) or long (3 s), the aim of this work was to examine whether APAs on the AP axis associated with gait initiation were modified depending on the duration of emotional image exposure prior to the imperative “go”.

In line with our second hypothesis, only a valence effect was found in APAs. Indeed, results showed that the APAs duration was longer and the APAs amplitude was larger with pleasant as compared to unpleasant images, regardless of the condition. Consistent with this finding, a valence effect was also found in the peak of forward CM velocity, larger with pleasant as compared to unpleasant images. Moreover, the longer length of the first step and the shorter movement time (time to reach the table) observed with pleasant than with unpleasant images also showed only a valence effect.

All these findings clearly showed that no condition effect was present in the APAs and thus, participants did not take advantage of the change in the initial posture in the long condition, i.e. a leaning of the whole body forwards. Yet, several studies reported that healthy participants modified their initial posture depending on the intended gait velocity [4,15]. In the latter study, young adults were instructed to initiate gait at three velocities: slow, normal and fast. Results showed that the participant’s forward leaning was greater in the fast condition than in the other ones. In the current study, the mean CP position (expressed in percentage of the support base length) during the 500 ms period preceding the imperative “go” in the long condition was about 45%. In the study by Lepers and Brenière [15], the initial forward leaning of the whole body corresponded to a CP position reaching 50% of the foot length, prior to the intended fast gait initiation. So, while the forward leaning of the body in both studies was very close, the following question arises: why did the advantage of a forward leaning of the body in the long condition not allow participants to make the APAs amplitude and thus the peak of CM forward velocity greater in the long than the short condition? We suggest that the following reasons may explain why no change in the APAs was found between the two conditions in this study. First, the movement goal between these two studies was quite different. Indeed, participants of the current study had to reach the table with no instruction regarding the gait velocity, whereas the aim of the movement in

the study by Lepers and Brenière [15] was to initiate a fast gait. Then, we thought that the forward leaning of the initial posture during the long condition of this study might be viewed as a preparation of the body for action [7], reflecting an increased readiness of the participants for an approach behaviour, but not the intention of a fast gait. Importantly, we thought that when the image appeared, the high uncertainty in the timing (short or long) of the imperative “go” with respect to the image onset would entail participants planning the movement well in advance [16]. As the APAs have been suggested to be implemented automatically as emotional images are processed [17], we reasoned that the APAs amplitude was determined depending only on the image valence. Hence, larger APAs were constructed with pleasant as compared to unpleasant images according to the motivational direction hypothesis. Furthermore, no effect of image arousal or interaction with condition or valence was found on APAs. This result is in contrast to that of an event-related potential study asking the participants to respond with a mouse-click when an emotional image was presented and for which arousal effects, but attenuated valence effects, were found [19]. That likely meant that the current task (clear approach behaviour) needed a judgment of the valence of the affective image content. Hence, in line with the results of a previous onset study [9] and those of an offset one [10], APAs on the progression axis of the current study depended on the image valence.

5. Conclusions

The main result of this study was that during gait initiation APAs and the peak of forward velocity reached at the end of the first step did not depend on the duration of affective image exposure, but only on the valence of these images. Moreover, no effect of the arousal level of these images was found, suggesting that the demands of the current task (approach to a pleasant/unpleasant image) especially required a judgment of the image valence [19]. Interestingly, APAs results of the current study markedly contrasted with those of reaction time. Indeed, the latter showed a condition effect and an interaction between condition and valence. They were found to be shorter in the long, as compared to the short condition and were similar with both emotional categories only in the long condition, as previously presented [13]. The later suggested that the onset of APAs was similar with pleasant as compared to unpleasant images in the long condition, because of the implementation of an implicit emotion regulation with unpleasant images in this condition, as previously reported [13]. The fact that the reaction time was similar with pleasant and unpleasant images in the long condition may be viewed as an advantage of this condition as compared to the short condition. However it was lost because the APAs amplitude was determined only by the image valence, making the movement faster with pleasant than unpleasant images, regardless of the duration of affective images.

Conflict of interest: The authors declare no conflict of interest

References

- [1] Hess, W.R. Teleokinetisches und ereismatisches Kräftessystem in der biomotorik, *Helv. Physiol. Pharmac* 1943, Acta 1, C62-C63.
- [2] Yiou, E. Caderby, T. Hussein, T. Adaptability of anticipatory postural adjustments associated with voluntary movement. *World J. Orthop* 2012, 18, 75-86, doi: 10.5312/wjo.v3.i6.75.
- [3] Massion, J. Movement, posture and equilibrium: interaction and coordination, *Prog. Neurobiol* 1992, 38, 35-56.
- [4] Crenna, P. Frigo, C. A motor program for initiation of forward oriented movements in man. *J. Physiol* 1991, 437, 635–653.

- [5] Brenière, Y. Do, M.C. Bouisset, S. Are dynamic phenomena prior to stepping essential to walking? *J. Mot. Behav.* 1987, 19, 62–76.
- [6] Lyon, I.N. Day, B.L. Control of frontal plane body motion in human stepping. *Exp. Brain Res* 1997, 115, 345-356.
- [7] Frijda, N.H. *The Emotions*; Cambridge University Press: Cambridge, UK, 1986.
- [8] Bradley, M.M. Codispoti, M. Cuthbert, B.N. Lang, P.J. Emotion and motivation I: defensive and appetitive reactions in picture processing. *Emotion* 2001, 1, 276–298.
- [9] Gélat, T. Coudrat, L. Le Pellec, A. Gait initiation is affected during emotional conflict. *Neurosci. Lett* 2011, 497, 64-67, doi: 10.1016/j.neulet.2011.04.030.
- [10] Naugle, K.M. Haas, C.J. Joyner, J. Coombes, S.A. Janelle, C.M. Emotional state affects the initiation of forward gait. *Emotion* 2011, 11, 267-277, doi: 10.1037/a0022577.
- [11] Olofsson, J.K. Nordin, S. Sequeira, S. Polich, J. Affective picture processing: An integrative review of ERP findings. *Biol. Psychol.* 2008, 77, 247-265, doi: 10.1016/j.biopsycho.2007.11.006.
- [12] Stins, J.F. Beek, P.J. Organization of voluntary stepping in response to emotion-inducing pictures. *Gait Posture* 2011, 34, 164-168, doi: 10.1016/j.gaitpost.2011.04.002.
- [13] Gélat, T. Ferrel-Chapus, C. Time reaction in gait initiation depends on the time available for affective processing. *Neurosci. Lett.* 2015, 609, 69-73, doi: 10.1016/j.neulet.2015.10.003.
- [14] Stins, J.F. Van Gelder, L.M.A. Oudenhoven, L.M. Beek, P.J. Biomechanical organization of gait initiation depends on the timing of affective processing. *Gait Posture* 2015, 41, 159-163, doi: 10.1016/j.gaitpost.2014.09.020.
- [15] Lepers, R. Brenière, Y. The role of anticipatory postural adjustments and gravity in gait initiation. *Exp. Brain Res.* 1995, 107, 118-124.
- [16] Carlsen, A.N. MacKinnon, C.D. Motor preparation is modulated by the resolution of the response timing information. *Brain Res* 2010, 1322, 38-49, doi: 10/1016/j.brainres.2010.01.076.
- [17] Vuilleumier, P. Armony, J.L. Driver, J. Dolan, R.J. Effects of attention and emotion on face processing in the human brain: an event-related fMRI study. *Neuron* 2001, 30, 829-841.
- [18] Lang, P.J. Bradley, M.M. Cuthbert, B.N. International affective picture system (IAPS): affective ratings of pictures and instruction manual. In Technical Report 2005, A-6 Gainesville, University of Florida.
- [19] Rozenkrants, B. Polich, J. Affective ERP processing in a visual oddball task: Arousal, valence and gender. *Clin. Neurophysiol* 2008, 119, 2260-2265, doi: 10.1016/j.clinph.2008.07.213.