



**HAL**  
open science

## Dissection of the TssB-TssC Interface during Type VI Secretion Sheath Complex Formation

Xiang Y. Zhang, Yannick R Brunet, Laureen Logger, Badreddine Douzi,  
Christian Cambillau, Laure Journet, E. Cascales

► **To cite this version:**

Xiang Y. Zhang, Yannick R Brunet, Laureen Logger, Badreddine Douzi, Christian Cambillau, et al..  
Dissection of the TssB-TssC Interface during Type VI Secretion Sheath Complex Formation. PLoS ONE, 2013, 8 (11), pp.e81074. 10.1371/journal.pone.0081074 . hal-02091436

**HAL Id: hal-02091436**

**<https://hal.univ-lorraine.fr/hal-02091436v1>**

Submitted on 21 May 2019

**HAL** is a multi-disciplinary open access archive for the deposit and dissemination of scientific research documents, whether they are published or not. The documents may come from teaching and research institutions in France or abroad, or from public or private research centers.

L'archive ouverte pluridisciplinaire **HAL**, est destinée au dépôt et à la diffusion de documents scientifiques de niveau recherche, publiés ou non, émanant des établissements d'enseignement et de recherche français ou étrangers, des laboratoires publics ou privés.



Distributed under a Creative Commons Attribution 4.0 International License

# Dissection of the TssB-TssC Interface during Type VI Secretion Sheath Complex Formation

Xiang Y. Zhang<sup>1</sup>, Yannick R. Brunet<sup>1</sup>, Laureen Logger<sup>1</sup>, Badreddine Douzi<sup>2</sup>, Christian Cambillau<sup>2</sup>, Laure Journet<sup>1</sup>, Eric Cascales<sup>1\*</sup>

**1** Laboratoire d'Ingénierie des Systèmes Macromoléculaires (LISM, UMR 7255), Institut de Microbiologie de la Méditerranée (IMM), Centre National de la Recherche Scientifique (CNRS), Aix-Marseille Université, Marseille, France, **2** Architecture et Fonction des Macromolécules Biologiques (AFMB, UMR 6098), Centre National de la Recherche Scientifique (CNRS), Aix-Marseille Université, Marseille, France

## Abstract

The Type VI secretion system (T6SS) is a versatile machine that delivers toxins into either eukaryotic or bacterial cells. At a molecular level, the T6SS is composed of a membrane complex that anchors a long cytoplasmic tubular structure to the cell envelope. This structure is thought to resemble the tail of contractile bacteriophages. It is composed of the Hcp protein that assembles into hexameric rings stacked onto each other to form a tube similar to the phage tail tube. This tube is proposed to be wrapped by a structure called the sheath, composed of two proteins, TssB and TssC. It has been shown using fluorescence microscopy that the TssB and TssC proteins assemble into a tubular structure that cycles between long and short conformations suggesting that, similarly to the bacteriophage sheath, the T6SS sheath undergoes elongation and contraction events. The TssB and TssC proteins have been shown to interact and a specific  $\alpha$ -helix of TssB is required for this interaction. Here, we confirm that the TssB and TssC proteins interact in enteroaggregative *E. coli*. We further show that this interaction requires the N-terminal region of TssC and the conserved  $\alpha$ -helix of TssB. Using site-directed mutagenesis coupled to phenotypic analyses, we demonstrate that an hydrophobic motif located in the N-terminal region of this helix is required for interaction with TssC, sheath assembly and T6SS function.

**Citation:** Zhang XY, Brunet YR, Logger L, Douzi B, Cambillau C, et al. (2013) Dissection of the TssB-TssC Interface during Type VI Secretion Sheath Complex Formation. PLoS ONE 8(11): e81074. doi:10.1371/journal.pone.0081074

**Editor:** Janakiram Seshu, The University of Texas at San Antonio, United States of America

**Received:** July 16, 2013; **Accepted:** October 9, 2013; **Published:** November 25, 2013

**Copyright:** © 2013 Zhang et al. This is an open-access article distributed under the terms of the Creative Commons Attribution License, which permits unrestricted use, distribution, and reproduction in any medium, provided the original author and source are credited.

**Funding:** Work in E.C. laboratory is supported by the Centre National de la Recherche Scientifique (CNRS), the Aix-Marseille Université and a grant from the Agence Nationale de la Recherche (ANR-10-JCJC-1303-03) to E.C. Work in C.C. laboratory is supported by the CNRS, the Aix-Marseille Université, the Plateforme Technologique de Recherche en Sciences Biologiques (IBISA) and a grant from the Fondation pour la Recherche Médicale (FRM DEQ2011-0421282). X.Y.Z. was supported by the ANR-10-JCJC-1303-03 grant, Y.R.B. by a doctoral fellowship from the French Ministère de la Recherche, and B.D. by the FRM-DEQ2011-0421282 grant. The funders had no role in study design, data collection and analysis, decision to publish, or preparation of the manuscript.

**Competing Interests:** Please note that Eric Cascales is a PLOS ONE Academic Editor. This does not alter the authors' adherence to all the PLOS ONE policies on sharing data and material.

\* E-mail: \*cascales@imm.cnrs.fr

## Introduction

The Type VI secretion system (T6SS) is a widely distributed secretion system in proteobacteria [1–3]. Initially identified as a system allowing *Vibrio cholerae* to resist predation by amoeba, recent data have demonstrated that it allows virulence towards eukaryotic host cells and/or competition towards neighbouring bacteria [4–13]. Among the effector domains delivered into eukaryotic host cells, the best characterized is the C-terminal domain of the VgrG protein of *V. cholerae*, that cross-links G-actin hence abrogating cytoskeleton rearrangements and dynamics [14–16]. T6SS effectors delivered into bacterial cells have been shown to bear peptidoglycan hydrolysis or phospholipase activities [6,17–24]. At a molecular level, the T6SS is composed of a membrane complex comprising four essential components, the TssL and TssM inner membrane proteins, the TssK cytoplasmic protein and the TssJ outer membrane lipoprotein [25–33]. This membrane complex serves as anchor for a cytoplasmic tubular structure that is structurally and functionally similar to the tails of contractile bacteriophages [34–37]. This tubular structure is composed of at least 5 components that share similarities with bacteriophage subunits. The tails of contractile bacteriophages are composed of

an internal tube that polymerizes onto a baseplate composed of six wedges and of the hub complex – or cell-puncturing device [38,39]. This internal tube is wrapped by a sheath structure that contracts upon attachment allowing to propel the internal tube towards the host cell [39]. The Hcp protein shares its fold with that of gpV, the tail tube protein of bacteriophage  $\lambda$  [40,41] whereas the VgrG protein assemble into a homotrimeric structure resembling the trimeric gp27-gp5 hub complex of bacteriophage T4 [14,35,42,43]. TssE is structurally similar to gp25, a component of the baseplate wedges [1,44]. Finally, TssB and TssC assemble into tubular structures with cogwheel patterns resembling the bacteriophage contractile sheath [45,46]. Indeed, cryo-electron tomography analyses showed that this structure exists either in an extended and thin conformation or in a short but wider conformation [47,48]. Fluorescence microscopy experiments further showed that these tubular structures are dynamic and oscillate between long and short conformations before being disassembled [13,47–49]. This mechanism is reminiscent of the bacteriophage sheath, which undergoes a contraction event when the viral particle attaches on host cell. Based on the homologies between the bacteriophage tail and several T6SS components, it is thought that the cytoplasmic tubular structure is composed of an

internal tube formed of hexamers of the Hcp protein stacked onto each other and wrapped by the TssB and TssC subunits that assemble into a sheath. Upon contact with a target cell, the sheath will contract, propelling the Hcp tube terminated by the VgrG protein towards the target cell [34–36]. It has been recently shown that contraction of the T6SS sheath coincides with the lysis of the target bacterial cell [13]. Finally, sheath disassembly is catalysed by ClpV, a specialized ATPase associated with the T6SS [45,47–50]. ClpV interacts with an  $\alpha$ -helix of TssC after contraction and is thought to either recycle the TssB and TssC proteins for a new round of assembly or target both proteins to degradation [48,51]. The interaction between the TssB and TssC subunits has been demonstrated in several microorganisms including *Francisella tularensis*, *Vibrio cholerae*, *Burkholderia cenocepacia*, *Yersinia pseudotuberculosis*, *Salmonella enterica* Typhimurium, and *Pseudomonas aeruginosa* [45,46,52–54]. The N-terminal 212 amino-acids of TssC are required for the TssB-TssC interaction in *B. cenocepacia* and in *P. aeruginosa* [46,54] while an  $\alpha$ -helix located between residues 100–130 of TssB are necessary in *F. tularensis*, *V. cholerae* and *P. aeruginosa* [52,55]. Here, we confirm the interaction between the TssB and TssC proteins encoded by the *sci-1* T6SS gene cluster of enteroaggregative *Escherichia coli* (EAEC) and that the N-terminal region of TssC and the  $\alpha$ -helix of TssB are required for the interaction. Finally, we dissect the role of  $\alpha$ -helix residues and demonstrate that an hydrophobic side of the helix located in its N-terminal region is necessary for the TssB-TssC interaction, sheath assembly and T6SS function.

## Results

### TssB interacts with the N-terminal domain of TssC

The TssB and TssC proteins assemble into a sheath structure that has been proposed to wrap an internal tube constituted of stacked Hcp hexamers. The interaction between these two proteins has been demonstrated in a number of bacterial strains including *V. cholerae*, *S. enterica* Typhimurium, *Y. pseudotuberculosis*, *F. tularensis*, *P. aeruginosa* and *B. cenocepacia* [44,45,51–53]. In agreement with these previous studies, we showed that TssB1 (accession numbers: EC042\_4524; YP\_006098801) and TssC1 (accession numbers: EC042\_4525; YP\_006098802), two proteins encoded within the *sci-1* T6SS gene cluster in enteroaggregative *E. coli* interact in a bacterial two-hybrid assay (Fig. 1A). We also observed that TssB1 and TssC1 oligomerize, as TssB1/TssB1 and TssC1/TssC1 combinations activated the expression of the reporter gene (Fig. 1A). Regarding TssC proteins, it has been shown in *P. aeruginosa* and *B. cenocepacia* that the N-terminal fragment comprising the first 212 amino-acids were sufficient for the interaction with TssB [46,54]. HHPred and Phyre domain analyses of TssC1 suggested that it is composed of two domains, including an N-terminal region of 384 amino-acids (residues 1–384) and a C-terminal region of 130 amino-acids (residues 385–514). We generated constructions to test the interaction between TssB1 and the N-terminal (1-384) or C-terminal (385–514) domains of TssC1. As shown in Fig. 1B, the N-terminal region of TssC1 was sufficient to interact with TssB1. Interestingly, we also noted that both the N- and C-terminal domains oligomerizes. However, no interaction between the N-terminal and C-terminal domains of TssC1 was detected (Fig. 1B).

### An $\alpha$ -helix of TssB is required for T6SS function, TssC interaction but not for self-interaction

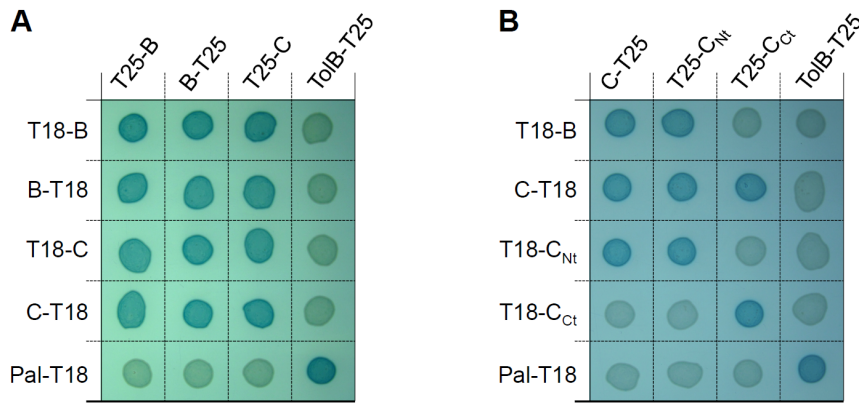
In *Francisella*, an  $\alpha$ -helix of the TssB homologue IglA, located between residues 103 and 122, has been shown to be essential for the function of the FPI-encoded T6SS [52]. Yeast two-hybrid

experiments further demonstrated that this region is required for efficient interaction with IglB, the *F. tularensis* homologue of TssC [52]. The mode of recognition between IglA and IglB has been shown to be conserved as the interactions between the *P. aeruginosa* HSI-3, *Y. pseudotuberculosis*, *V. cholerae* and uropathogenic *E. coli* TssB and TssC proteins require this  $\alpha$ -helix [52,55]. Our results show that this is indeed conserved in EAEC, as deletion of the helix residues located between residues E104 and L131 of TssB1 abolishes the ability of the *Sci-1* T6SS to release the Hcp1 protein (Fig. 2A) and to interact with TssC1 (Fig. 2B). However, bacterial two-hybrid experiments showed that deletion of this  $\alpha$ -helix has no impact on TssB oligomerization (Fig. 2B).

### The hydrophobic face of the $\alpha$ -helix is required for TssC interaction and assembly of the sheath-like structure

The sequence of the  $\alpha$ -helix of the EAEC TssB1 protein facilitating its interaction with TssC1 is shown in Fig. 3A. Interestingly, a projection of this  $\alpha$ -helix (Fig. 3B, 3C and 3D) showed that the N-terminal region presents an amphipathic character as it comprises both a hydrophobic side (Val-106, Ile-110, Leu-113 and Leu-117) and a polar/charged side (Glu-104, Gln-105, Arg-108, Gln-109, Arg-112, Arg-120). Finally, one face of the C-terminal region of the helix is rich in leucine residues (Leu-122, Leu-123, Leu-126, Leu-130) resembling a leucine-zipper motif (Fig. 3B, 3C and 3D). To better understand the mode of binding between the TssB and TssC proteins, we engineered TssB1 variants in which the hydrophobic, polar/charged and leucine motifs were substituted by tryptophan residues (the residues targeted in this study are highlighted in colour in Fig. 3A-D). Tryptophan-scanning mutagenesis is usually used to test interactions between  $\alpha$ -helices as tryptophan residues do not disrupt formation of  $\alpha$ -helices but induces a steric hindrance abolishing protein-protein contacts [56,57]. Mutations within the leucine-rich motif (L123W-L130W, called LL) had no effect on *Sci-1* T6SS function and on TssB1-TssC1 interaction as shown by Hcp release (Fig. 3E) and two-hybrid (Fig. 3F) assays. Interestingly, while substitution of the polar/charged motif (R108W-R112W, called RR) had no effect on TssB1-TssC1 interaction, the function of the T6SS was abrogated, suggesting that these mutations may affect interactions with other partners or proper folding of TssB1. Finally, mutations within the hydrophobic motif (V106W-I110W-L117W) abolished both the release of Hcp and the interaction with TssC1 (Fig. 3E and 3F). We further dissected the effect of the hydrophobic motifs by generating double and single substitutions (Fig. 4). All the double substitutions within the hydrophobic face abrogated T6SS function and TssB1-TssC1 interaction. Regarding the single substitutions, mutation of Val-106 had no effect while mutations of Ile-110 and Leu-117 abolished T6SS function (Fig. 4A) by decreasing TssB1 binding to TssC1 (Fig. 4B). It is worth noting that all the TssB1 variants used in this study accumulated at levels comparable to the wild-type TssB1 protein (data not shown).

Finally, we wondered whether disruption of the TssB-TssC interaction impacts sheath assembly. Fluorescence microscopy approaches have recently been developed to follow the assembly of TssBC sheath structures by fusing TssB to the superfolder Green Fluorescent Protein (sf-GFP) [13,33,47–50]. In  $\Delta$ *tssB1* cells producing TssB1-sfGFP, the fusion protein assembles into tubular structures that undergo cycles of assembly, contraction and disassembly (Fig. 5A). These structures are not visible in  $\Delta$ *tssBC1* cells (Fig. 5A), in agreement with the fact that these tubular structures are composed of both TssB and TssC proteins [45,46]. However, when the overall fluorescence levels of  $\Delta$ *tssB1* or  $\Delta$ *tssBC1* cells producing TssB1-sfGFP were measured, we observed



**Figure 1. TssB1 interacts with the N-terminal domain of TssC1.** BTH101 reporter cells carrying pairs of plasmids producing the indicated T6SS proteins or domains (B, TssB1; C, TssC1; C<sub>Nt</sub>, N-terminal domain of TssC1; C<sub>Ct</sub>, C-terminal domain of TssC1) fused to the T18 or T25 domain of the *Bordetella* adenylate cyclase were spotted on X-Gal indicator LB agar plates. Controls include T18 and T25 fusions to TolB and Pal, two proteins that interact but unrelated to the T6SS. doi:10.1371/journal.pone.0081074.g001

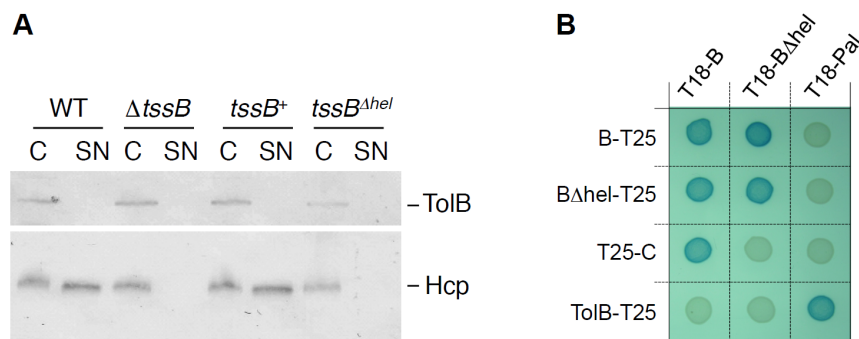
that  $\Delta tssBC1$  cells displayed 6–8% of fluorescence compared to  $\Delta tssB1$  cells, suggesting that TssB1-sfGFP is less stable in absence of TssC1. When TssB1-sfGFP variants bearing single substitutions within the polar/charged or leucine-rich motif were produced in  $\Delta tssB1$  cells, dynamic structures oscillating between extended and contracted conformations were observed, indicating a functional T6SS (Fig. 5B). By contrast, mutations of the Ile-110 or Leu-117 residue led to a diffuse fluorescence in the cell body without any identifiable tubular structures, demonstrating that disruption of the TssB-TssC interaction prevents formation of T6SS sheaths (Fig. 5B).

**Discussion**

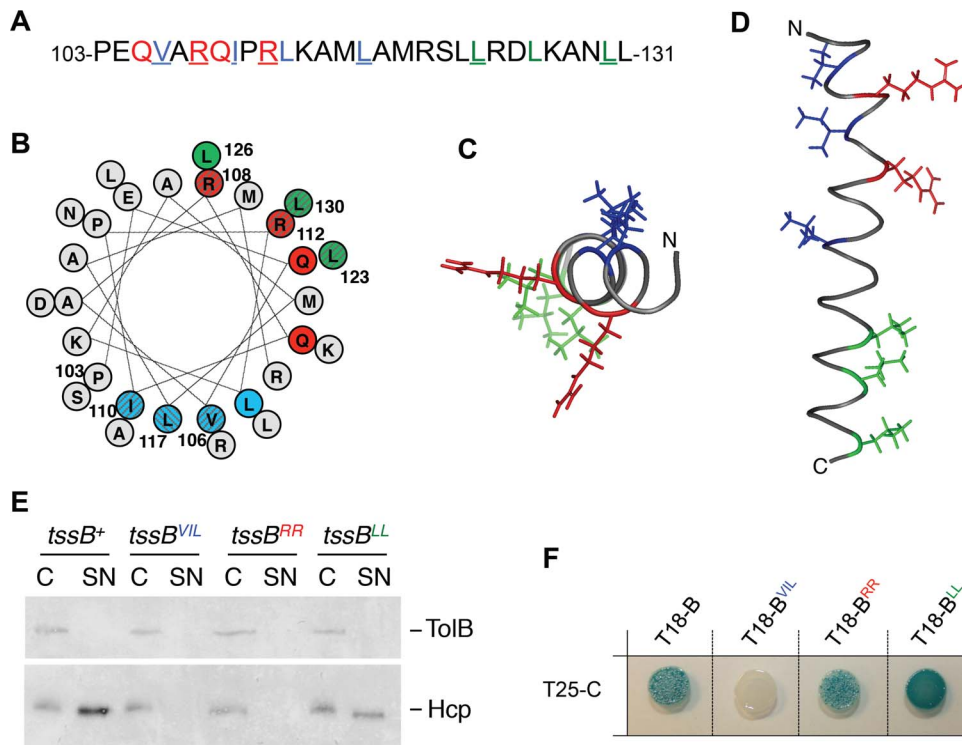
The portion of the T6SS related to the bacteriophage tail is composed of an internal tube comprising hexameric rings of Hcp stacked onto each other and wrapped into a structure formed by the TssB and TssC components. The assembly of this structure oscillates between elongated and contracted conformations and is thought to be similar to the mechanism of action of bacteriophage contractile sheaths. It has been therefore proposed that conformational changes in the TssB and TssC proteins induce a large

modification in this structure leading to its contraction and allowing propelling of the internal tube towards the exterior [34,35,43,45,46]. The internal tube is tipped by the VgrG protein that acts as a cell-puncturing device to perforate the host cell membrane allowing delivery of effector domains or proteins [34,36,37]. In this work, we focussed our attention on the TssB1 and TssC1 proteins encoded within the *sci-1* gene cluster of enteroaggregative *E. coli*.

Using bacterial two-hybrid experiments, we showed that (i) TssB1 interacts with itself, (ii) TssC1 interacts with itself, and (iii) TssB1 and TssC1 interact. The self-interaction of the TssB and TssC components is in agreement with the formation of long structures that should comprise hundreds of TssB and TssC molecules. We also showed that the N-terminal region of TssC1 and the C-terminal region of TssC1 self-interact. However, we did not detect interaction between the N-terminal and C-terminal regions of TssC1, suggesting that TssC1 oligomeric complex formation is driven by N-terminal/N-terminal and C-terminal/C-terminal interactions. We also showed that the N-terminal domain of TssC1 is sufficient for its interaction with TssB1. The TssB-TssC interaction was previously demonstrated in numerous studies



**Figure 2. The  $\alpha$ -helix located between residues 104 and 130 of TssB1 is required for T6SS function and interaction with TssC1.** (A) Hcp release assay. Hcp<sub>FLAG</sub> release was assessed by separating whole cells (C) and culture supernatant (SN) fractions from  $2 \times 10^9$  wild-type (WT),  $\Delta tssB1$  ( $\Delta tssB$ ) cells or  $\Delta tssB1$  cells producing TssB1 ( $tssB^+$ ) or TssB1 deleted of the  $\alpha$ -helix 104-130 ( $tssB\Delta^{hel}$ ). Proteins were separated by 12.5%-acrylamide SDS-PAGE and Hcp was immunodetected using anti-FLAG monoclonal antibody (lower panel). The periplasmic TolB protein (immunodetected using an anti-TolB polyclonal antibodies, upper panel) was used as a marker to verify that no lysis occurred. (B) Bacterial two-hybrid assay. BTH101 reporter cells carrying pairs of plasmids producing the indicated T6SS proteins (B, TssB1; B $\Delta$ hel, TssB1 deleted of the  $\alpha$ -helix; C1, TssC1) fused to the T18 or T25 domain of the *Bordetella* adenylate cyclase were spotted on X-Gal indicator LB agar plates. doi:10.1371/journal.pone.0081074.g002



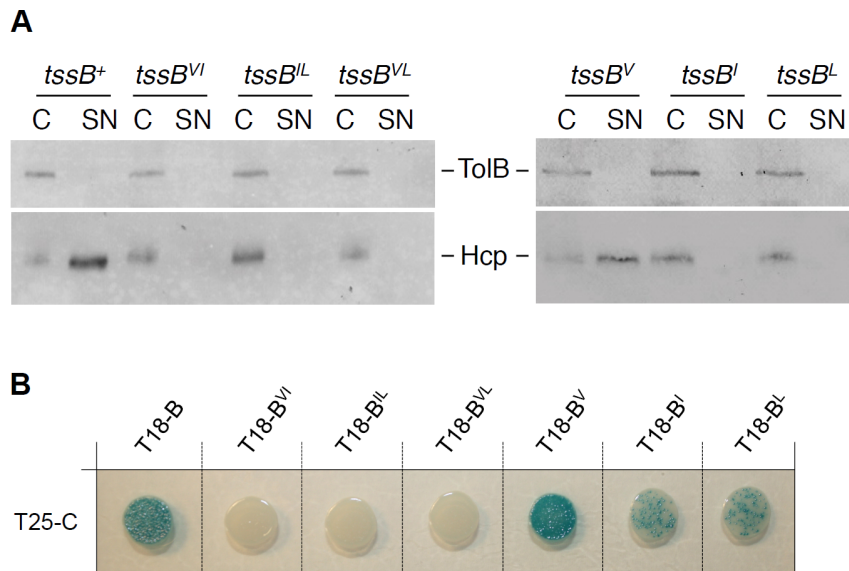
**Figure 3. The hydrophobic motif of the TssB1  $\alpha$ -helix is required for T6SS function and interaction with TssC1.** Amino-acid sequence (A) and helical wheel projection (B) of the TssB1  $\alpha$ -helix (from residue Pro-103 to residue Leu-131). The different motifs described in this study are highlighted in different colours: blue, N-terminal hydrophobic; red, polar/charged; green, leucine-rich. The residues of these motifs mutagenized in this study are underlined (A) or striped (B). Top-view (C) and side-view (D) projections of the TssB1  $\alpha$ -helix. The targeted residues are colored as in panel (A). Top- and side-views have been modelled using PyMOL v0.99. (E) Hcp release assay. Hcp<sub>FLAG</sub> release was assessed by separating whole cells (C) and culture supernatant (SN) fractions from  $2 \times 10^9$   $\Delta$ tssB1 cells producing TssB1 (*tssB*<sup>+</sup>) or TssB1 bearing substitutions within the hydrophobic (*tssB*<sup>VIL</sup>), the polar/charged (*tssB*<sup>RR</sup>) or the leucine-rich (*tssB*<sup>LL</sup>) motif. Proteins were separated by 12.5%-acrylamide SDS-PAGE and Hcp and TolB were immunodetected using anti-FLAG monoclonal (lower panel) and anti-TolB polyclonal (upper panel) antibodies. (F) Bacterial two-hybrid assay. BTH101 reporter cells producing the T25 domain of the *Bordetella* adenylate cyclase fused to TssC1 (T25-C) and the T18 domain fused to TssB1 (T18-B) or TssB1 variants bearing substitutions within the hydrophobic (T18-B<sup>VIL</sup>), the polar/charged (T18-B<sup>RR</sup>) or the leucine-rich (T18-B<sup>LL</sup>) motif were spotted on X-Gal indicator LB agar plates.

doi:10.1371/journal.pone.0081074.g003

[45,46,52–54] and the requirement of the N-terminal domain of TssC for the interaction was evidenced in *B. cenocepacia* and *P. aeruginosa* [46,54]. The interaction between TssB and TssC has been shown to stabilize both proteins [45,46,52,55]. Interestingly, our fluorescence microscopy experiments showed that the level of fluorescence of  $\Delta$ tssB1C1 cells producing TssB1-sfGFP is 6–8% of the fluorescence in  $\Delta$ tssB1 cells, confirming that TssB-sfGFP is stabilized by the presence of TssC.

The TssB1 protein of EAEC is composed of 165 amino-acids. Secondary structure predictions showed that it contains an  $\alpha$ -helix between residues Pro-103 and Leu-131. This  $\alpha$ -helix has been previously shown to be essential for T6SS function and TssB-TssC interaction in *F. tularensis* and *V. cholerae* [52,55]. Interestingly, the authors of this study also showed that this  $\alpha$ -helix is essential for TssB-TssC interaction in several microorganisms including *V. cholerae*, *Y. pseudotuberculosis*, *S. enterica* Typhimurium, uropathogenic *E. coli* and *P. aeruginosa*, suggesting that the mode of binding of TssB to TssC is conserved [52]. We obtained similar results in enteroaggregative *E. coli*: deletion of this conserved  $\alpha$ -helix causes disruption of the TssB1-TssC1 interaction and abolishes T6SS function as shown by Hcp release assay. When projected on a helical wheel, we observed that this  $\alpha$ -helix has a strong amphipathic character in its N-terminal region. Indeed, one face of the helix is essentially constituted of hydrophobic residues (Val,

Leu, Ile) while the opposite face is composed of polar or positively charged residues (Arg, Gln). The charge partition in the C-terminal region of the helix is better balanced but we observed a leucine-rich face, on the same side that the polar/charged motif. Using site-directed mutagenesis, we substituted residues within each of these motifs. Our analyses highlighted the importance of the N-terminal hydrophobic motif. Mutation of the three Val-106, Ile-110 and Leu-117 residues showed that this motif is required for TssB1-TssC1 interaction, sheath assembly and T6SS function. Single and double substitutions further showed that the Ile-110 and Leu-117 residues have a more important contribution within this motif. Our results also indicated that substitution of the arginine-rich motif within the conserved  $\alpha$ -helix does not prevent formation of the TssB1-TssC1 complex (Fig. 3F); however, the T6SS is not functional as shown by Hcp release assay (Fig. 3E). This suggests that mutation of this motif may disrupt interaction of TssB1 with additional partners, yet to be identified, or that it prevents proper folding of TssB1. Indeed, fluorescence microscopy experiments showed that mutation of these two arginine residues abolishes sheath assembly (data not shown). However, single substitutions had no effect on sheath assembly and on T6SS function. Interestingly, while preparing this manuscript, Bröms et al. published a study where they showed that a hydrophobic motif located in the same region of the *V. cholerae* TssB  $\alpha$ -helix is required



**Figure 4. Mutagenesis study of the hydrophobic motif of the TssB1  $\alpha$ -helix.** (A) Hcp release assay. Hcp<sub>FLAG</sub> release was assessed by separating whole cells (C) and culture supernatant (SN) fractions from  $2 \times 10^9$   $\Delta$ *tssB1* cells producing TssB1 (*tssB*<sup>+</sup>) or TssB1 bearing double or single substitutions within the hydrophobic motif (*tssB*<sup>Vl</sup>, V106W-L110W; *tssB*<sup>Ll</sup>, I110W-L117W; *tssB*<sup>VlL</sup>, V106W-L117W; *tssB*<sup>Vl</sup>, V106W; *tssB*<sup>Ll</sup>, I110W; *tssB*<sup>Ll</sup>, L117W). Proteins were separated by 12.5%-acrylamide SDS-PAGE and Hcp and TolB were immunodetected using anti-FLAG monoclonal (lower panel) and anti-TolB polyclonal (upper panel) antibodies. (B) Bacterial two-hybrid assay. BTH101 reporter cells producing the T25 domain of the *Bordetella* adenylate cyclase fused to TssC1 (T25-C) and the T18 domain fused to TssB1 (T18-B) or TssB1 variants bearing substitutions within the hydrophobic motif (T18-B<sup>Vl</sup>, V106W-L110W; T18-B<sup>Ll</sup>, I110W-L117W; T18-B<sup>VlL</sup>, V106W-L117W; T18-B<sup>Vl</sup>, V106W; T18-B<sup>Ll</sup>, I110W; T18-B<sup>Ll</sup>, L117W) were spotted on X-Gal indicator LB agar plates.

doi:10.1371/journal.pone.0081074.g004

for proper interaction with TssC [55]. The results from this study and from the work described here showed that identical TssB motifs are required to functionally interact with TssC in *V. cholerae* and EAEC. We therefore hypothesize that the mode of binding of TssB to TssC is similar in T6SSs. However, Lossi et al. noted that the TssB and TssC proteins encoded by the *P. aeruginosa* HSI-1 T6SS gene cluster interact but are not able to interact with homologues encoded by a second T6SS gene cluster present on the chromosome [46]. One can hypothesize that the hydrophobic motif of the  $\alpha$ -helix is the primary determinant for formation of the TssB-TssC complex but that additional determinants might control the proper and specific assembly of the sheath when several T6SS are produced at the same time. Further studies are required to better understand how TssB proteins identify their cognate partners.

## Experimental Procedures

### Bacterial strains, media and chemicals

*Escherichia coli* DH5 $\alpha$  (New England Biolabs) was used for cloning procedures, BTH101 [58] for bacterial two-hybrid assays. Hcp release and fluorescence microscopy have been performed into the enteroaggregative *E. coli* strain 17-2. With the exception of the bacterial two-hybrid assay (at 30°C), cells were grown in Luria broth (LB) at 37°C. Plasmids were maintained by addition of ampicillin (100  $\mu$ g/mL), chloramphenicol (40  $\mu$ g/mL) or kanamycin (50  $\mu$ g/mL). Gene expression was induced by 0.5 mM isopropyl- $\beta$ -thio-galactoside (IPTG) or 0.01% arabinose. For the Hcp release assay, expression of the *sci-1* gene cluster was induced by addition of the iron chelator 2,2'-dipyridyl (125  $\mu$ M final concentration) 30 minutes prior harvesting the cells [59]. For fluorescence microscopy experiments, cells were grown in minimal

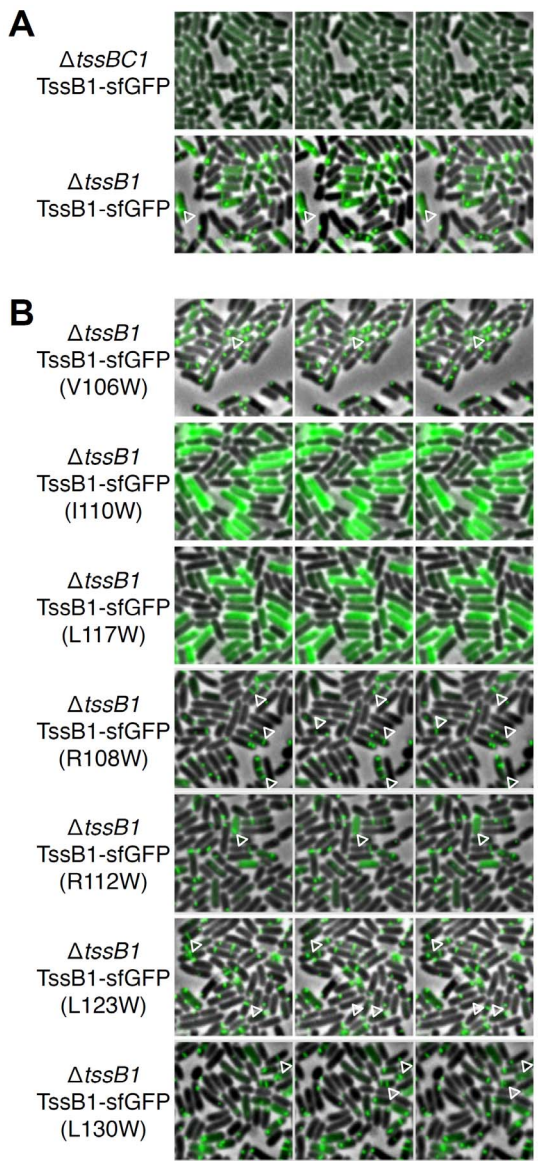
M9 medium supplemented with casaminoacids, glucose 0.4% and 10% of LB.

### Strain construction

Construction of the  $\Delta$ *tssB1* and  $\Delta$ *tssB1* mutant strains. The *tssB1* gene was deleted into the enteroaggregative *E. coli* 17-2 strain using a modified one-step inactivation procedure [60] as previously described [25] using plasmid pKOBEG [61]. PCR products to be electroporated were obtained using oligonucleotides DEL-4524-5/DW (5'-GGAGGCATCTGCGGTGATGGAACCCCTGAGATGCAGGTTTCACAGGAGAGCCTGTGTAGGCTG-GAGCTGCTTCG) and DEL-4524-3/DW (5'-TTCTTTTCTTTCTGTACAGACATCAGCATTTCCTCTCG-TAATCCGTTAAACATATGAATATCCTCCTTAGTTCC) carrying 50- nucleotide extensions homologous to regions adjacent to *tssB1* (in italics). Kanamycin resistant clones were selected and verified by colony-PCR. The kanamycin cassette was then excised using plasmid pCP20 [60]. The deletion of *tssB1* was confirmed by colony-PCR. Construction of the  $\Delta$ *tssB1* strain was done identically, using oligonucleotides DEL-4524-5/DW and DEL-4525-3/DW (5'-GCCCCGTCTTCCCATAATGGCGA-TAAATCTTCATTTCGACACCTGCCCATATGAA-TATCCTCCTTAGTTCC).

### Plasmid construction

Polymerase Chain Reactions (PCR) were performed using a Biometra thermocycler using Pfu Turbo DNA polymerase (Agilent Technology). Restriction enzymes were purchased from NewEngland Biolabs and used according to the manufacturer's instructions. Custom oligonucleotides were synthesized by Sigma Aldrich. Enteroaggregative *E. coli* 17-2 chromosomal DNA was used as a template for all PCRs. *E. coli* strain DH5 $\alpha$  was used for cloning procedures. All the plasmids have been constructed by restriction-



**Figure 5. The hydrophobic motif of the TssB1  $\alpha$ -helix is required for T6SS sheath assembly.** Time-lapse fluorescence microscopy recordings showing sheath dynamics in  $\Delta tssBC1$  ( $\Delta tssB1$ - $\Delta tssC1$ ) or  $\Delta tssB1$  cells producing TssB1-sfGFP (TssB1) (A) or TssB1-sfGFP bearing the indicated substitutions (B). Individual images were taken every 30 sec. Assembly and contraction events are indicated by the white open triangles. Scale bars are 2  $\mu$ m. doi:10.1371/journal.pone.0081074.g005

free cloning [62] as previously described [27]. Briefly, genes of interest were amplified with oligonucleotides introducing extensions annealing to the target vector. The double-stranded product of the first PCR has then been used as oligonucleotides for a second PCR using the target vector as template. Constructions of the bacterial two-hybrid vectors encoding TssB1 and TssC1 fusion proteins and of the pBAD33-TssB1-VSVG and pBAD-TssB1-sfGFP plasmids have been previously described [33]. Bacterial two-hybrid vectors encoding T18 and T25-TssC<sub>Nt</sub> fusions were constructed by insertion of a premature stop codon into T18-TssC and T25-TssC by site directed mutagenesis using oligonucleotides 5'- GAACCGGGATTATGCCTGCTTCTTCTCTTAAGC-TAACTCCGCCAGAAACCGGCG and

CGCCGGTTTCTGGGCGGAGTTAGCTTAAGAGAA-GAAGCAGGCATAATCCCGGTTTC (stop codon underlined). Bacterial two-hybrid vectors encoding T18- and T25-TssC<sub>Ct</sub> fusions were obtained by restriction-free cloning using oligonucleotides CGCCACTGCAGGGATTATAAAGATGACGATGACAAAGGCTAACTCCGCCAGAAACCGGCG and CGAGGTGACGGTATCGATAAGCTTGATATC-GAATTCTAGTTACGCTTTTGCCTTCGGCATCTGC-GAAACCAGTG (for T18) and GGCGGGCTGCAGATTATAAAGATGACGATGACAAGGCTAACTCCGCCAGAAACCGGCG and CGAGGTGACGGTATCGATAAGCTTGATATC-GAATTCTAGTTACGCTTTTGCCTTCGGCATCTGC-GAAACCAGTG (for T25). Substitutions have been introduced by quick change site-directed mutagenesis using complementary pairs of oligonucleotides (listed in Table S1). All constructs have been verified by restriction analyses and DNA sequencing (Eurofins, MWG).

**Bacterial Two-Hybrid Assay**

The adenylate cyclase-based bacterial two-hybrid technique [58] was used as previously published [63]. Briefly, pairs of proteins to be tested were fused to the isolated T18 and T25 catalytic domains of the *Bordetella* adenylate cyclase. After transformation of the two plasmids producing the fusion proteins into the reporter BTH101 strain, plates were incubated at 30°C for 48 hours. Three independent colonies for each transformation were inoculated into 600  $\mu$ l of LB medium supplemented with ampicillin, kanamycin and IPTG (0.5 mM). After overnight growth at 30°C, 10  $\mu$ l of each culture were dropped onto MacConkey and LB supplemented with Bromo-Chloro-Indolyl-Galactopyrannoside (X-Gal) plates and incubated for 16 hours at 30 °C. The experiments were done at least in triplicate and a representative result on LB-X-Gal plate is shown.

**Hcp release assay**

The presence of Hcp in culture supernatants has been tested as previously described [25]. Briefly,  $2 \times 10^9$  cells producing FLAG epitope-tagged Hcp were harvested and collected by centrifugation at 2,000 $\times g$  for 5 min. The supernatant fraction was then subjected to a second low-speed centrifugation and then at 16,000 $\times g$  for 15 min. The supernatant was then filtered on sterile polyester membranes with a pore size of 0.2  $\mu$ m (membrex 25 PET, membraPure GmbH) before precipitation with trichloroacetic acid (TCA, 15% final concentration). Cells and precipitated supernatants were then resuspended in loading buffer and analyzed by SDS-PAGE and immunoblotting with the anti-FLAG antibody. As control for lysis, Western blot were immunostained with antibodies raised against the periplasmic TolB protein.

**Fluorescence microscopy and image treatment**

Fluorescence microscopy experiments to follow T6SS sheath assembly have been performed as previously described [13,33]. Briefly, bacterial cells carrying plasmid pBAD33-TssB1-sfGFP (encoding the TssB1 protein fused to a C-terminal superfolder Green Fluorescent Protein, [33]) or derivatives were grown overnight in LB medium and then diluted to an OD<sub>600 nm</sub> ~0.05 into M9 minimal medium supplemented with glycerol, casamino acids, chloramphenicol and 10% of LB. When the OD<sub>600 nm</sub> reached ~1.0, cells were harvested and washed in phosphate buffered saline (PBS), resuspended in PBS to an OD<sub>600 nm</sub> ~50, and spotted on a thin pad of 1.5% agarose in PBS, covered with a cover slip and incubated for one hour at 37°C prior to microscopy acquisition. For each experiment, ten independent

fields were manually defined with a motorized stage (Prior Scientific) and stored (X, Y, Z, PFS-offset) in a custom automation system designed for time-lapse experiments. Fluorescence and phase contrast micrographs were captured every 30 sec. using an automated and inverted epifluorescence TE2000-E-PFS (Nikon, France) microscope equipped with Perfect Focus System (PFS). PFS automatically maintains focus so that the point of interest within a specimen is always kept in sharp focus at all times despite mechanical or thermal perturbations. Images were recorded with a CoolSNAP HQ 2 (Roper Scientific, Roper Scientific SARL, France) and a 100×/1.4 DLL objective. Excitation light was emitted by a 120 W metal halide light. The sfGFP images were recorded by using the ET-GFP filter set (Chroma 49002) using an exposure time of 100–200 ms. Phase contrast and fluorescence were adjusted and merged using ImageJ 1.46j (<http://rsb.info.nih.gov/ij/>). Fluorescence levels have been measured using a TECAN microplate reader as previously published [11,64].

### Miscellaneous

Proteins resuspended in loading buffer were subjected to sodium dodecyl sulphate (SDS)-polyacrylamide gel electrophoresis (PAGE). For detection by immunostaining, proteins were transferred onto nitrocellulose membranes, and immunoblots were probed with primary antibodies, and goat secondary antibodies coupled to alkaline phosphatase, and developed in alkaline buffer

### References

- Bingle LE, Bailey CM, Pallen MJ (2008) Type VI secretion: a beginner's guide. *Curr Opin Microbiol* 11: 3–8.
- Cascales E (2008) The Type VI secretion toolkit. *EMBO Rep* 9: 735–41.
- Boyer F, Fichant G, Berthod J, Vandenbrouck Y, Attree I (2009) Dissecting the bacterial type VI secretion system by a genome wide in silico analysis: what can be learned from available microbial genomic resources? *BMC Genomics*. 10: 104.
- Pukatzki S, Ma AT, Sturtevant D, Krastins B, Sarracino D, et al. (2006) Identification of a conserved bacterial protein secretion system in *Vibrio cholerae* using the Dictyostelium host model system. *Proc Natl Acad Sci USA*. 103: 1528–33.
- Pukatzki S, McAuley SB, Miyata ST (2009) The type VI secretion system: translocation of effectors and effector-domains. *Curr Opin Microbiol*. 12: 11–7.
- Hood RD, Singh P, Hsu F, Güvener T, Carl MA, et al. (2010) A type VI secretion system of *Pseudomonas aeruginosa* targets a toxin to bacteria. *Cell Host Microbe*. 7: 25–37.
- Schwarz S, Hood RD, Mougous JD (2010) What is Type VI secretion doing in all those bugs? *Trends Microbiol* 18: 531–37.
- Schwarz S, West TE, Boyer F, Chiang WC, Carl MA, et al. (2010) Burkholderia type VI secretion systems have distinct roles in eukaryotic and bacterial cell interactions. *PLoS Pathog* 6: e1001068.
- MacIntyre DL, Miyata ST, Kitaoka M, Pukatzki S (2010) The *Vibrio cholerae* type VI secretion system displays antimicrobial properties. *Proc Natl Acad Sci U S A*. 107: 19520–4.
- Murdoch SL, Trunk K, English G, Fritsch MJ, Pourkarimi E, et al. (2011) The opportunistic pathogen *Serratia marcescens* utilizes type VI secretion to target bacterial competitors. *J Bacteriol*. 193: 6057–69.
- Gueguen E, Cascales E (2013) Promoter swapping unveils the role of the *Citrobacter rodentium* CTS1 Type VI secretion system in interbacterial competition. *Appl Environ Microbiol*. 79: 32–8.
- Basler M, Ho BT, Mekalanos JJ (2013) Tit-for-tat: type VI secretion system counterattack during bacterial cell-cell interactions. *Cell*. 152: 884–94.
- Brunet YR, Espinosa L, Harchouni S, Mignot T, Cascales E (2013) Imaging Type VI secretion mediated bacterial killing. *Cell Rep*. 3: 36–41.
- Pukatzki S, Ma AT, Revel AT, Sturtevant D, Mekalanos JJ (2007) Type VI secretion system translocates a phage tail spike-like protein into target cells where it cross-links actin. *Proc Natl Acad Sci USA* 104: 15508–13.
- Ma AT, McAuley S, Pukatzki S, Mekalanos JJ (2009) Translocation of a *Vibrio cholerae* type VI secretion effector requires bacterial endocytosis by host cells. *Cell Host Microbe*. 5: 234–43.
- Durand E, Derrez E, Audoly G, Spinelli S, Ortiz-Lombardia M, et al. (2012) Crystal structure of the VgrG1 actin cross-linking domain of the *Vibrio cholerae* Type VI secretion system. *J Biol Chem*. 287: 38190–9.
- Russell AB, Hood RD, Bui NK, Leroux M, Vollmer W, et al. (2011) Type VI Secretion Delivers Bacteriolytic Effectors To Target Cells. *NATURE*. 475: 343–7.
- Russell AB, Singh P, Brittnacher M, Bui NK, Hood RD, et al. (2012) A widespread bacterial type VI secretion effector superfamily identified using a heuristic approach. *Cell Host Microbe*. 11: 538–49.
- Chou S, Bui NK, Russell AB, Lexa KW, Gardiner TE, et al. (2012) Structure of a peptidoglycan amidase effector targeted to Gram-negative bacteria by the type VI secretion system. *Cell Rep*. 1: 656–64.
- Benz J, Sendlmeier C, Barends TR, Meinhart A (2012) Structural insights into the effector-immunity system Tse1/Tsi1 from *Pseudomonas aeruginosa*. *PLoS One*. 7: e40453.
- English G, Trunk K, Rao VA, Srikannathasan V, Hunter WN, et al. (2012) New secreted toxins and immunity proteins encoded within the Type VI secretion system gene cluster of *Serratia marcescens*. *Mol Microbiol*. 86: 921–36.
- Dong TG, Ho BT, Yoder-Himes DR, Mekalanos JJ (2013) Identification of T6SS-dependent effector and immunity proteins by Tn-seq in *Vibrio cholerae*. *Proc Natl Acad Sci U S A*. 110: 2623–8.
- Brooks TM, Unterwiesing D, Bachmann V, Kostiuik B, Pukatzki S (2013) Lytic activity of the *Vibrio cholerae* type VI secretion toxin VgrG-3 is inhibited by the antitoxin TsaB. *J Biol Chem*. 288: 7618–25.
- Russell AB, LeRoux M, Hathazi K, Agnello DM, Ishikawa T, et al. (2013) Diverse type VI secretion phospholipases are functionally plastic antibacterial effectors. *Nature*. 496: 508–12.
- Aschtgen MS, Bernard CS, de Bentzmann S, Llobes R, Cascales E (2008) SciN is an outer membrane lipoprotein required for type VI secretion in enteroaggregative *Escherichia coli*. *J Bacteriol* 190: 7523–31.
- Ma LS, Lin JS, Lai EM (2009) An IcmF family protein, ImpL<sub>M</sub>, is an integral inner membrane protein interacting with ImpK<sub>L</sub>, and its Walker A motif is required for type VI secretion system-mediated Hcp secretion in *Agrobacterium tumefaciens*. *J Bacteriol* 191: 4316–29.
- Aschtgen MS, Gavioli M, Dessen A, Llobes R, Cascales E (2010) The SciZ protein anchors the enteroaggregative *Escherichia coli* Type VI secretion system to the cell wall. *Mol Microbiol* 75: 886–99.
- Aschtgen MS, Thomas MS, Cascales E (2010) Anchoring the type VI secretion system to the peptidoglycan: TssL, TagL, TagP... what else? *Virulence* 1: 535–40.
- Felisberto-Rodrigues C, Durand E, Aschtgen MS, Blangy S, Ortiz-Lombardia M, et al. (2011) Towards a structural comprehension of bacterial type VI secretion systems: characterization of the TssJ-TssM complex of an *Escherichia coli* pathovar. *PLoS Pathog*. 7: e1002386.
- Aschtgen MS, Zoued A, Llobes R, Jourmet L, Cascales E (2012) The C-tail anchored TssL subunit, an essential protein of the enteroaggregative *Escherichia coli* Sci-1 Type VI secretion system, is inserted by YidC. *Microbiologyopen*. 1: 71–82.
- Durand E, Zoued A, Spinelli S, Watson PJ, Aschtgen MS, et al. (2012) Structural characterization and oligomerization of the TssL protein, a component shared by bacterial type VI and type IVb secretion systems. *J Biol Chem*. 287: 14157–68.

### Supporting Information

**Table S1 Oligonucleotides used for site-directed mutagenesis.**  
(DOCX)

### Acknowledgments

We thank Tãm Mignot for fluorescence microscopy, the members of the Cascales, Llobès, Cambillau, Bouveret and Sturgis research groups for helpful discussions, Isabelle Bringer, Annick Brun and Olivier Uderso for technical assistance, and Sacha Touille for encouragements. We also wish to thank the reviewers for their corrections and helpful suggestions.

### Author Contributions

Conceived and designed the experiments: XYZ CC LJ EC. Performed the experiments: XYZ YRB LL BD. Analyzed the data: XYZ YRB EC. Contributed reagents/materials/analysis tools: XYZ YRB LL BD CC LJ EC. Wrote the paper: EC.



32. Rao VA, Shepherd SM, English G, Coulthurst SJ, Hunter WN (2011) The structure of *Serratia marcescens* Lip, a membrane-bound component of the type VI secretion system. *Acta Crystallogr D Biol Crystallogr*. 67: 1065–72.
33. Zoued A, Durand E, Bebeacua C, Brunet YR, Douzi B, Cambillau C, Cascales E, Journet L (2013) TssK is a trimeric cytoplasmic protein interacting with components of both phage-like and membrane anchoring complexes of the Type VI secretion system. *J Biol Chem* 288: 27031–41.
34. Bonemann G., Pietrosiuk A., and Mogk A (2010) Tubules and donuts: a type VI secretion story. *Mol. Microbiol.* 76: 815–21
35. Cascales E, Cambillau C (2012) Structural biology of type VI secretion systems. *Philos Trans R Soc Lond B Biol Sci*. 367: 1102–11.
36. Silverman JM, Brunet YR, Cascales E, Mougous JD (2012) Structure and regulation of the type VI secretion system. *Annu Rev Microbiol*. 66: 453–72.
37. Coulthurst SJ (2013) The Type VI secretion system - a widespread and versatile cell targeting system. *Res Microbiol*. 164: 640–54.
38. Leiman PG, Arisaka F, van Raaij MJ, Kostyuchenko VA, Aksyuk AA, et al. (2010) Morphogenesis of the T4 tail and tail fibers. *Virology*. 7: 355.
39. Leiman PG, Shneider MM (2012) Contractile tail machines of bacteriophages. *Adv Exp Med Biol*. 726: 93–114.
40. Mougous JD, Cuff ME, Raunser S, Shen A, Zhou M, et al. (2006) A virulence locus of *Pseudomonas aeruginosa* encodes a protein secretion apparatus. *Science* 312: 1526–30.
41. Pell LG, Kanelis V, Donaldson LW, Howell PL, Davidson AR (2009) The phage lambda major tail protein structure reveals a common evolution for long-tailed phages and the type VI bacterial secretion system. *Proc Natl Acad Sci USA* 106: 4160–65.
42. Kanamaru S, Leiman PG, Kostyuchenko VA, Chipman PR, Mesyanzhinov VV, et al. (2002) Structure of the cell-puncturing device of bacteriophage T4. *Nature*. 415: 553–7.
43. Leiman PG, Basler M, Ramagopal UA, Bonanno JB, Sauder JM, et al. (2009) Type VI secretion apparatus and phage tail-associated protein complexes share a common evolutionary origin. *Proc Natl Acad Sci USA* 106: 4154–59.
44. Lossi NS, Dajani R, Freemont P, Filloux A (2011) Structure-function analysis of HsiF, a gp25-like component of the type VI secretion system, in *Pseudomonas aeruginosa*. *Microbiology*. 157: 3292–305.
45. Bönemann G, Pietrosiuk A, Diemand A, Zentgraf H, Mogk A (2009) Remodelling of VipA/VipB tubules by ClpV-mediated threading is crucial for type VI protein secretion. *EMBO J* 28: 315–25.
46. Lossi NS, Manoli E, Forster A, Dajani R, Pape T, et al. (2013) The HsiB1C1 (TssB-TssC) complex of the *Pseudomonas aeruginosa* type VI secretion system forms a bacteriophage tail sheathlike structure. *J. Biol. Chem.* 288: 7536–48.
47. Basler M, Pilhofer M, Henderson GP, Jensen GJ, Mekalanos JJ (2012) Type VI secretion requires a dynamic contractile phage tail-like structure. *Nature*. 483: 182–6.
48. Kapitein N, Bonemann G, Pietrosiuk A, Seyffer F, Hausser I, et al. (2013) ClpV recycles VipA/VipB tubules and prevents non-productive tubule formation to ensure efficient type VI protein secretion. *Mol. Microbiol.* 87: 1013–1028.
49. Basler M, and Mekalanos JJ (2012) Type 6 secretion dynamics within and between bacterial cells. *Science* 337: 815.
50. LeRoux M, De Leon JA, Kuwada NJ, Russell AB, Pinto-Santini D, et al. (2012) Quantitative single-cell characterization of bacterial interactions reveals type VI secretion is a double-edged sword. *Proc Natl Acad Sci U S A*. 109: 19804–9.
51. Pietrosiuk A, Lenherr ED, Falk S, Bonemann G, Kopp J, et al. (2011) Molecular basis for the unique role of the AAA+ chaperone ClpV in type VI protein secretion. *J. Biol. Chem.* 286: 30010–21.
52. Bröms JE, Lavander M, Sjöstedt A (2009) A conserved alpha-helix essential for a type VI secretion-like system of *Francisella tularensis*. *J Bacteriol*. 191: 2431–46.
53. Karna SL, Zogaj X, Barker JR, Seshu J, Dove SL, et al. (2010) A bacterial two-hybrid system that utilizes Gateway cloning for rapid screening of protein-protein interactions. *Biotechniques*. 49: 831–3.
54. Aubert D, MacDonald DK, Valvano MA (2010) BcsKC is an essential protein for the type VI secretion system activity in *Burkholderia cenocepacia* that forms an outer membrane complex with BcsLB. *J Biol Chem*. 285: 35988–98.
55. Bröms JE, Ishikawa T, Wai SN, Sjöstedt A (2013) A functional VipA-VipB interaction is required for the type VI secretion system activity of *Vibrio cholerae* O1 strain A1552. *BMC Microbiol*. 13: 96.
56. Sharp LL, Zhou J, Blair DF (1995) Tryptophan-scanning mutagenesis of MotB, an integral membrane protein essential for flagellar rotation in *Escherichia coli*. *Biochemistry*. 34: 9166–71.
57. Sharp LL, Zhou J, Blair DF (1995) Features of MotA proton channel structure revealed by tryptophan-scanning mutagenesis. *Proc Natl Acad Sci U S A*. 92: 7946–50.
58. Karimova G, Pidoux J, Ullmann A, and Ladant D (1998) A bacterial two-hybrid system based on a reconstituted signal transduction pathway. *Proc. Natl. Acad. Sci. U.S.A.* 95: 5752–56.
59. Brunet YR, Bernard CS, Gavioli M, Llobès R, Cascales E (2011) An epigenetic switch involving overlapping Fur and DNA methylation optimizes expression of a type VI secretion gene cluster. *PLoS Genet*. 7: e1002205.
60. Datsenko KA, and Wanner BL (2000) One-step inactivation of chromosomal genes in *Escherichia coli* K-12 using PCR products. *Proc. Natl. Acad. Sci. U.S.A.* 97: 6640–45.
61. Chaverroche MK, Ghigo JM, d'Enfert C (2000) A rapid method for efficient gene replacement in the filamentous fungus *Aspergillus nidulans*. *Nucleic Acids Res*. 28: E97.
62. van den Ent F, and Lowe J (2006) RF cloning: a restriction-free method for inserting target genes into plasmids. *J. Biochem. Biophys. Methods* 67: 67–74.
63. Battesti A, Bouveret E (2012) The bacterial two-hybrid system based on adenylate cyclase reconstitution in *Escherichia coli*. *Methods* 58: 325–334.
64. Gueguen E, Durand E, Zhang XY, d'Amalric Q, Journet L, et al. (2013) Expression of a *Yersinia pseudotuberculosis* Type VI secretion system is responsive to envelope stresses through the OmpR transcriptional activator. *PLoS One*. 8: e66615.