



HAL
open science

Synthesis of Cu@ZnO core–shell nanoparticles by spark discharges in liquid nitrogen

H. Kabbara, J. Ghanbaja, C. Noël, T. Belmonte

► **To cite this version:**

H. Kabbara, J. Ghanbaja, C. Noël, T. Belmonte. Synthesis of Cu@ZnO core–shell nanoparticles by spark discharges in liquid nitrogen. *Nano-Structures & Nano-Objects*, 2017, 10, pp.22-29. 10.1016/j.nanoso.2017.03.002 . hal-02106041

HAL Id: hal-02106041

<https://hal.univ-lorraine.fr/hal-02106041>

Submitted on 15 May 2019

HAL is a multi-disciplinary open access archive for the deposit and dissemination of scientific research documents, whether they are published or not. The documents may come from teaching and research institutions in France or abroad, or from public or private research centers.

L'archive ouverte pluridisciplinaire **HAL**, est destinée au dépôt et à la diffusion de documents scientifiques de niveau recherche, publiés ou non, émanant des établissements d'enseignement et de recherche français ou étrangers, des laboratoires publics ou privés.

SYNTHESIS OF Cu@ZnO CORE-SHELL NANOPARTICLES BY SPARK DISCHARGES IN LIQUID NITROGEN

H. Kabbara¹, J. Ghanbaja¹, C. Noël^{1,2}, T. Belmonte^{1,2,*}

¹Université de Lorraine, Institut Jean Lamour, UMR CNRS 7198, NANCY, F-54042, France

²CNRS, Institut Jean Lamour, UMR CNRS 7198, NANCY, F-54042, France

* corresponding author. Email: thierry.belmonte@univ-lorraine.fr

PACS number: 52.80.Wq Discharge in liquids and solids

Keywords: Spark discharges ; submerged discharges ; Core-shell structures ; Nanostructures ;
Time-resolved optical emission spectroscopy

ABSTRACT

Core-shell nanoparticles are synthesized by nanosecond-pulsed discharges in liquid nitrogen using a two-step process. In a first step, copper nanoparticles (resp. zinc nanosheets) are synthesized by eroding pure copper (resp. zinc) electrodes. In a second step, copper (resp. zinc) electrodes are removed and replaced by zinc (resp. copper) electrodes in the liquid loaded with copper nanoparticles (resp. zinc nanosheets). After erosion and air oxidation, once nitrogen has evaporated, Cu@ZnO core-shell nanoparticles are obtained in both configurations. The shell is always ZnO, because of the unusual formation of zinc nanosheets instead of zinc nanoparticles. When Cu electrodes are used first, copper nanoparticles are wrapped in ZnO nanosheets. When Zn electrodes are used first, copper nanoparticles hit zinc nanosheets and get coated to form also Cu@ZnO. In this latter case, Cu₂O@ZnO are sometimes encountered too but to a much lesser extent. Copper oxidation is then attributed to a failure in the zinc protective shell. Time-resolved optical emission spectroscopy measurements reveal that Cu lines and Zn lines are never emitted simultaneously, the element in the liquid remaining outside the discharge area. If zinc nanosheets are synthesized first, N II lines are exclusively observed during the first 200 ns of discharges with copper electrodes, revealing for this process the possibility of highly energetic processes.

1. INTRODUCTION

Synthesis of nanoparticles (NPs) by discharges in dielectric liquids is an efficient way to process nanostructures at high rate and very low cost [1]. ZnO and CuO are semiconductors that are extensively studied. They both present an appreciable photocatalytic activity and might be good candidates for photocatalysis and solar cells [2–4]. They also offer perspectives in sensing applications [5–7]. Their band gaps are ~3.3 eV, 1.2-1.9 eV and ~2.3 eV for ZnO (intrinsic n-type), CuO(intrinsic p-type) and Cu₂O(intrinsic p-type) respectively. On the contrary, the CuO-ZnO system has thus far received little attention. The mixed systems of zinc oxide and copper oxide as nanosize core-shell structures have only been reported by Tamanis *et al.* [8] very recently. Furthermore, Cu@ZnO core-shell nanostructures have been acknowledged to be important catalysts for methanol production from synthesis gas at moderate pressures and temperatures [9, 10].

If the synthesis of copper oxides and zinc oxide NPs by discharges in liquids have been amply investigated [11–16], the same is not true for core-shell structures and alloys. Panuthai *et al.* [17] eroded copper–zinc (Cu–Zn) alloy electrodes with different copper contents (90Cu/10Zn and 65Cu/35Zn) by an arc discharge submerged in glycol, ethanol and deionized water. They could produce a mixture of Cu, Cu–Zn, and zinc oxide nanoparticles with size distributions depending on the chosen liquid. Karahaliou *et al.* [18] synthesized CuO@Ta₂O₅ core-shell NPs by anodic arc-discharges in water. They run discharges between a graphite electrode and a U-shaped circular stainless steel holder filled with compressed copper and tantalum micro-grains. According to these authors, in the specific arrangement used, mechanisms involved in the synthesis of CuO@Ta₂O₅ NPs are unknown.

In the present work, we study the possibility to grow core-shell nanoparticles in the Cu-Zn-O system by discharges in liquid nitrogen via a three-step process. Discharges are run first between two copper electrodes to produce Cu NPs. Next, new discharges are run between two zinc electrodes in the same liquid where Cu NPs, formed during the first step, are present.

Cu@Zn core-shell NPs are thus expected to be obtained, zinc coating then copper nanoparticles. To get Zn@Cu NPs, steps 1 and 2 should just be swapped, but it turns out that things are more complex in this case and that will be described hereinafter. The last step corresponds to the oxidation of the synthesized core-shell NPs, which occurs after evaporation of liquid nitrogen, which leads to air exposure and transformation of metals into oxides. Besides thorough investigations of as-formed nanoparticles by different diagnostics, we resorted to time-resolved optical emission spectroscopy at the nanosecond scale to clarify the growth mechanisms of these nanostructures.

2. EXPERIMENTAL SET-UP

The experimental set-up was presented in detail in reference [19]. Briefly, a pin-to-pin electrode configuration was used. Electrodes were copper or zinc wires (1 mm in diameter). A high DC voltage power supply (Technix SR15-R-1200–15 kV–80 mA) fed a solid-state switch (HTS-301-03-GSM) connected to one pin-electrode, the other electrode being grounded. The voltage rise time was 20 ns without ballast resistor.

Experiments were run in two steps. The first step corresponds to the synthesis of one specific type of nanoparticles, say copper, in liquid nitrogen, which is known to be inert in our conditions. The experimental conditions retained here are an applied voltage of +10 kV and an inter-electrode gap distance of 100 μm . After the dielectric liquid is enriched with nanoparticles (*i.e.* after about one hour of successive discharges ignited at 10 Hz), the second step starts. It consists in running discharges in the same liquid, now loaded in copper nanoparticles, but with two electrodes made of zinc to get a Cu@Zn core-shell structure. The duration of a single discharge pulse is 200 ns. The duration of the second step of NPs synthesis process is also about one hour. The volume of the liquid used in the reactor is 100 cm^3 .

Nanoparticles are collected by sedimentation on a silicon wafer located under the pin-electrodes. We resorted to scanning electron microscopy (SEM) — XL30S-FEG by Philips —

for structural and chemical observations. An EDXS (Energy-Dispersive X-ray Spectrometer) was used for elemental analysis and a TLD detector (through the lens detector) was used for high resolution imaging. A Philips CM200 device and a JEOL ARM 200F Cold FEG device were used for TEM investigation in order to study the crystallinity and the chemical composition of NPs. Electron Energy Loss Spectroscopy EELS experiments were performed in diffraction mode. The spectrometer is set to an energy dispersion 0.05 eV/channel. The condenser aperture, spectrometer entrance, camera length were respectively 150 μm , 2.5 mm and 4 cm leading to a collection half angle of 20 mrad and an energy resolution of 0.5 eV measured at full width at half maximum (FWHM) of zero loss peak. Energy-Filtered Transmission Electron Microscopy (EFTEM) were recorded in STEM mode.

Optical emission spectroscopy was performed with a 550 mm focal length monochromator (Jobin–Yvon TRIAX 550) equipped with a 100 g mm^{-1} grating for overall spectra in the (250–900 nm) visible range, lines being strongly broadened and high spectral resolution useless. It was coupled with a HORIBA Jobin–Yvon i-Spectrum Two iCCD detector. Each measurement is averaged over 50 spectra recorded with an exposure time of 50 ns. Although discharges in dielectric liquids are known to be stochastic, using a solid-state switch with a 20-ns rise time ensures a high level of reproducibility because breakdown necessarily occurs within a time window inferior to the exposure time (see reference [20] for further details). However, because of the generation of high-frequency signals by discharge current oscillations (at about 1 MHz), ghost lines are sometimes observed. They are easily identified in time-resolved data, for they disappear from one spectrum to the other.

3. RESULTS AND DISCUSSION

3.1. On the specificity of Zn erosion

If eroding copper electrodes under the chosen conditions leads to the synthesis of NPs with spherical shapes (**Fig. 1a**), eroding zinc electrodes gives mainly 2-dimensional nanostructures

(nanosheets) with few spread NPs (**Fig. 1b**). Typically, their thickness is about 4 nm, according to AFM measurements. Spherical NPs are made of CuO, since copper NPs are exposed to air before TEM analysis, once liquid nitrogen has fully evaporated. These primary NPs have sizes ranging typically between 2 and 10 nm. However, larger primary NPs, with diameters closer to 30–50 nm are also present, but to a lesser extent. Similarly, nanosheets are made of ZnO. Unreported diffraction patterns and micro-EDX analyses prove undoubtedly that both metals are oxidized as CuO and ZnO respectively.

The behaviour of zinc is uncommon for a metal eroded by spark discharges in liquids. This is likely due to the use of liquid nitrogen as liquid dielectric. Indeed, all processes of the same kind are usually operated in deionized water, leading to spherical or elongated nanoparticles [12, 15]. We assume that the synthesis of zinc nanosheets proceeds by a kind of exfoliation mechanism where a few atomic layers are detached from zinc grains submitted to the plasma flux. This mechanism would be driven by the specific structure of the zinc wire used as electrode as soon as sufficiently large thermal gradients are at stake. However, till now, no clear explanation dealing with the synthesis mechanism of these nanosheets can be put forward. Ongoing new experiments will maybe give a better understanding. Nevertheless, the specific nanosheet structure of zinc produced by plasma erosion of the electrodes is a key feature in the present work to explain how core-shell structures are formed, as described below.

3.2. Starting with copper electrodes

When copper nanoparticles, like those depicted in **Fig. 1a**, are synthesized first, a large part of these particles – *i.e.* those floating in the vicinity of the inter-electrode gap each time the discharge is ignited – get coated by zinc during the second step of the process. They represent about 35 ± 5 percent of the objects collected on a TEM grid. These NPs are then exposed to air, once liquid nitrogen is evaporated, and get oxidized. In **Fig. 2a**, a TEM overview of the core-shell NPs is depicted. Spherical NPs (**Fig. 2a**), similar to those obtained for pure copper

(**Fig. 1a**), are visible. When we zoom in, we observed that these NPs are coated by a shell, which is very clear in **Fig. 2b**. The diffraction pattern corresponding to the selected area (**Figs. 2c** and **2d**) indicates the presence of pure copper and zinc oxide ZnO. We readily infer that the zinc shell protects the copper core from oxidation, once the nanostructure is put in the air. Zinc is turned into zinc oxide, which passivates the nanostructure and preserves its metallic core. On the other hand, the metallic character of the core could be confirmed by Electron Energy Loss Spectroscopy (**Fig. 3**). In **Fig. 3a**, the near-edge structure of L_{23} -Cu in the EELS spectrum is formally identical to metallic copper's (after data available in references [21-23]). On the other hand, the near-edge structure of L_3 -Zn in the EELS spectrum (**Fig. 3b**) exhibits the same P_1 and P_2 contributions – due the fact that the electron beam changes from parallel to perpendicular to c-axis – as in ZnO. Finally, running discharges between zinc electrodes in liquid nitrogen loaded with copper nanoparticles does produce Cu@ZnO core-shell nanostructures.

3.3. Starting with zinc electrodes

When zinc sheets, as those depicted in **Fig. 1b**, are synthesized first, they are hit by copper NPs synthesized during the second step of the process and exiting the discharge. Then, the general sheet-like aspect of zinc is kept, as it is visible in **Fig. 4a**. Two types of core-shell NPs are produced: Cu@ZnO (~80-90% of core-shell objects) and $Cu_2O@ZnO$ (~10-20%).

Copper NPs synthesized in the discharge hit the zinc sheets at high speed and stick to them and/or get wrapped by zinc. Two situations arise.

First, a copper NP is fully covered by a zinc sheet. High-resolution TEM images (**Fig. 4b**) clearly show the full coverage of copper by zinc. The diffraction pattern corresponding to the selected area (**Figs. 4c** and **4d**) indicates the presence of Cu and ZnO. The metallic character of the core was again confirmed by Electron Energy Loss Spectroscopy (**Fig. 5**). In **Fig. 5a**, the near-edge structure of L_{23} -Cu in the EELS spectrum is formally identical to metallic copper's [21-23]. The near-edge structure of L_3 -Zn in the EELS spectrum (**Fig. 5b**) exhibits

the same features as those of zinc oxide. Finally, EDXS line scanning profiles along Cu@ZnO core-shell nanoparticles are provided as supplemental material 1.

Second, images made by Energy-Filtered Transmission Electron Microscopy (EFTEM) of a large Cu₂O@ZnO NP (**Figs. 6a to 6d**) stress the possible presence of defects in the structure of the shell. The circled area (**Fig. 6a**) shows nanopores in the zinc shell. The diffraction pattern (**Figs. 7b and 7c**) corresponding to this core-shell object (**Fig. 7a**) indicates the presence of Cu₂O and ZnO. This time, copper is partly oxidized under the form of cuprous oxide. The fact that it is not fully oxidized in air, contrary to Cu nanoparticles that are transformed into CuO when no zinc is present – see **Fig. 1a** – is presumably due to the imperfect coverage by the ZnO shell that limits oxygen penetration into the NP core. Protection provided by the zinc shell is patently less efficient as in the former case. Indeed, when a large nanoparticle is observed, the zinc shell is found to be non-uniform. Its thickness varies, as might be expected, from the side where the copper NP hits the zinc sheet to the opposite side, where the contact with zinc is very limited, if not non-existent. There, the zinc shell is not continuous and exhibits open pores (see the circled region in **Fig. 7a**). When oxidation occurs, we presume that copper gets oxidized till ZnO seals the pores thanks to its molar volume (14.52 cm³ mol⁻¹) which is one and a half time as big as zinc (9.16 cm³ mol⁻¹). Thus, Cu₂O is formed instead of CuO. A schematic of the synthesis mechanisms for the synthesis of core-shell NPs is proposed in **Fig. 8**. Syntheses are reproducible with a satisfactory level, leading to very similar features as far as we could evaluate it by TEM analyses. Core-shell nanostructures did not exhibit any ageing effects after exposure to air and moisture for several weeks.

3.4. Time-resolved optical emission spectroscopy

Time-resolved optical emission spectroscopy was used to better understand how these core-shell NPs were synthesized. In **Fig. 9a**, time-resolved optical emission spectra of discharges

between zinc electrodes, immersed in liquid nitrogen loaded in copper, are depicted. Copper loading is achieved by running ~18,000 discharges (30 min at 10 Hz) with the copper electrodes and by replacing them by zinc electrodes, as done in the two-step synthesis process of Cu@Zn core-shell NPs. We observe an intense background emission followed by the emergence of zinc emission lines when the medium cools down and becomes optically thin. The intensity of the background emission is not given in Fig. 10a, but from raw data, we know it is the highest intensity observed during the process (in our condition, it reaches 55,000 counts at the wavelength at which the grating is blazed, *i.e.* 500 nm, after 150 ns, versus a tenth of this value for the zinc transition at 481.05 nm after 500 ns). The lack of copper lines, even though copper nanoparticles are present in liquid nitrogen, is likely due to the hindrance of an inward flux from the liquid phase by the huge pressure exerted from the core of the spark discharge outwards. The presence of intense background emission (mainly due to electron-ion recombination after [24]) at the beginning of the process masks most the lines that pop up in the spectrum after 200-250 ns typically.

In **Fig. 9b**, time-resolved optical emission spectra of discharges between copper electrodes immersed in liquid nitrogen loaded in zinc (~18,000 discharges) are depicted. As explained previously, because of the very limited background emission, lines appear immediately. The most surprising result is the presence of N II lines (*i.e.* emitted by excited N⁺ states) at short times, from 0 to 250 ns, without any simultaneous emission of N I or N₂ I lines. The most intense atomic lines of nitrogen are known to be in the NIR spectral region [25]. Data recorded from 650 nm and 800 nm show only a very weak broad line (between 100 and 300 ns) centred at ~745 nm, which is more likely due to the N II transition expected at 745.095 nm. New experiments would be necessary to investigate possible N I transitions beyond 800 nm.. Here again, we notice that no line of the metal which liquid nitrogen is loaded with, *i.e.* zinc in this case, is detected. The same argument, *i.e.* the expansion of the plasma that would limit the influx of zinc, can be put forward to explain this behaviour. Copper lines are

observed after 200 ns. A detailed analysis of all transitions observed is given as supplemental material 2.

N II lines are observed in highly-energetic discharges like lightning events or high current pulsed arcs [26, 27]. Indeed, producing N^{+*} excited states requires at least 24.296 eV [28], which is the energy necessary for dissociative ionization of N_2 by electron collision. However, this value is probably overestimated in media where pressure can reach several thousand bars. Indeed, the lowering of the ionization energy can be significant, leading to much lower values. As neither N I nor N_2 I transitions are observed, we infer that these states are weakly populated and/or trapped in this optically thick medium. This observation might also result from a low concentration of one metal element with respect to the other.

The weak background emission observed in this situation suggests that the electron-ion recombination process is limited, which might be due either to a lower concentration of charged species or to an increase in the electron temperature as the cross-section of this process is favoured at low energy.

Since zinc NPs exhibit a specific sheet-like shape, we wondered whether this feature could play a role on the behaviour of discharges. Then, we used brass (63wt.%Cu-37wt.%Zn) electrodes instead of zinc electrodes during the first step of the process. In this case, and in order to keep the size of this paper reasonable, we will admit that spherical Cu and Zn primary NPs with size distributions below 10 nm are synthesized. The almost perfect overlap of spectra recorded when zinc or brass electrodes (**Fig. 10**) are used shows the non-influence of the shape of Zn NPs. It also shows that copper NPs do not interfere in the excitation process of N II lines.

In any situation (Zn@Cu or Cu@Zn), Cu and Zn lines are never observed simultaneously. The metal-containing discharge made by erosion of the electrodes remains clear of metallic NPs initially contained in the dielectric liquid. This means that the synthesis of core-shell NPs occurs in post-discharge. Two steps are then required: one to produce NPs in discharge and

one to coat them in post-discharge. Until now, no information is available on the way the transition from one step to the other occurs. New experiments are needed to better understand this transition.

4. CONCLUSION

We showed that Cu@Zn core-shell NPs are synthesized by a two-step process, whichever step is processed first. Nevertheless, the zinc shell has not the same feature, which gives, after air oxidation, either Cu@ZnO or Cu₂O@ZnO nanostructures. This possibility is mainly due to the formation of zinc nanosheets, an uncommon shape in this kind of process that usually produces spherical nanoparticles, like for copper. The formation mechanism of these 2D nanostructures is a major stake and it is still under investigation to be fully clarified. From time-resolved optical emission spectroscopy, we found out that copper and zinc never emit lines at the same time. No alloying is then possible in these conditions. That is why core-shell structures are found. When liquid nitrogen is loaded with Cu NPs, only zinc lines are emitted. On the other hand, when liquid nitrogen is loaded with Zn nanosheets or NPs, N II lines are emitted during the first 200 ns before copper lines become visible. This process is observed here for the first time and remains unclear but it might be useful to better understand processes in dielectric liquids submitted to high voltages.

REFERENCES

- [1] T Belmonte, A Hamdan, F Kosior, C Noël, G Henrion, Interaction of discharges with electrode surfaces in dielectric liquids: application to nanoparticle synthesis, *J. Phys. D: Appl. Phys.* 47 (2014) 224016
- [2] T. Soejima, K. Takada, S. Ito, Alkaline vapor oxidation synthesis and electrocatalytic activity toward glucose oxidation of CuO/ZnO composite nanoarrays, *Appl. Surf. Sci.* 277 (2013) 192–200
- [3] P. Sathishkumar, R. Sweena, J. J. Wu, S. Anandan, Synthesis of CuO-ZnO nanophotocatalyst for visible light assisted degradation of a textile dye in aqueous solution, *Chem. Engin. J.*, 171 (2011) 136–140
- [4] Z. Liu, H. Bai, S. Xu, D. D. Sun, Hierarchical CuO-ZnO “corn-like” architecture for photocatalytic hydrogen generation, *Int. J. Hydrogen Energy*, 36 (2011) 13473–13480
- [5] L. Wang, Y. Kang, Y. Wang, B. Zhu, S. Zhang, W. Huang, S. Wang, CuO nanoparticle decorated ZnO nanorod sensor for low-temperature H₂S detection, *Mater. Sci. Engin. C*, 32 (2012) 2079–2085
- [6] S. J. Kim, C. W. Na, I. S. Hwang, J. H. Lee, One-pot hydrothermal synthesis of CuO–ZnO composite hollow spheres for selective H₂S detection, *Sens. Actuators B: Chem.*, 168 (2012) 83–89
- [7] Q. Qi, T. Zhang, Y. Zeng, H. Yang, Humidity sensing properties of KCl doped Cu–Zn/CuO–ZnO nanoparticles, *Sens. Actuators B: Chem.*, 137 (2009) 21–26
- [8] E. Tamanis, E. Sledevskis, A. Ogurcovs, Synthesis of Core/Shell CuO-ZnO Nanoparticles and Their Second-Harmonic Generation Performance, *Latvian J. Phys. Techn. Sci.*, 52 (2015) 41–46
- [9] M. Schur, B. Bems, A. Dassenoy, I. Kassatkine, J. Urban, H. Wilmes, O. Hinrichsen, M. Muhler, R. Schlögl, Continuous coprecipitation of catalysts in a micromixer:

- Nanostructured Cu/ZnO composite for the synthesis of methanol. *Angewandte Chemie International Edition*, 42 (2003) 3815–3817
- [10] S.B. Kalidindi, B.R. Jagirdar, S.B. Kalidindi, B.R. Jagirdar, Synthesis of Cu@ZnO core-shell nanocomposite through digestive ripening of Cu and Zn nanoparticles, *J. Phys. Chem. C*, 112 (2008) 4042–8.
- [11] V. S. Burakov, E. A. Nevar, M. I. Nedel'ko, N. V. Tarasenko, Synthesis and Modification of Molecular Nanoparticles in Electrical Discharge Plasma in Liquids, *Russ. J. Gen. Chem.*, 85 (2015) 1222–1237
- [12] N. Tarasenko, A. Nevar, M. Nedelko, Properties of zinc-oxide nanoparticles synthesized by electrical-discharge technique in liquids, *Phys. Status Solidi A*, 207 (2010) 2319–2322
- [13] Chih-Hung Loa, Tsing-Tshih Tsunga, Liang-Chia Chen, Shape-controlled synthesis of Cu-based nanofluid using submerged arc nanoparticle synthesis system (SANSS), *J. Cryst. Growth* 277 (2005) 636–642
- [14] W. T. Yao, S. H. Yu, Y. Zhou, J. Jiang, Q. S. Wu, L. Zhang, Formation of uniform CuO nanorods by spontaneous aggregation: Selective synthesis of CuO, Cu₂O, and Cu nanoparticles by a solid-liquid phase arc discharge process, *J. Phys. Chem. B* 109 (2005) 14011–14016
- [15] A. A. Ashkarran, S. M. Mahdavi, M. M. Ahadian, Photocatalytic activity of ZnO nanoparticles prepared via submerged arc discharge method, *Appl. Phys. A*, 100 (2010) 1097–1102
- [16] C. H. Lo, T. T. Tsung, L. C. Chen, C. H. Su, H. M. Lin, Fabrication of copper oxide nanofluid using submerged arc nanoparticle synthesis system (SANSS), *J. Nanopart. Res.*, 7 (2005) 313–320

- [17] N. Panuthai, R. Savanglaa, P. Prasertdam, S. Kheawhom, Characterization of copper–zinc nanoparticles synthesized via submerged arc discharge with successive reduction process, *Jap. J. Appl. Phys.* 53 (2014) 05HA11
- [18] P. K. Karahaliou, P. Svarnas, S. N. Georga, N. I. Xanthopoulos, D. Delaportas, C. A. Krontiras, I. Alexandrou, CuO/Ta₂O₅ core/shell nanoparticles synthesized in immersed arc-discharge: production conditions and dielectric response, *J. Nanopart. Res.* 14 (2012) 1297
- [19] A. Hamdan, C. Noel, F. Kosior, G. Henrion, T. Belmonte, Impacts created on various materials by micro-discharges in heptane: Influence of the dissipated charge, *J. Appl. Phys.* 113 (2013) 043301
- [20] A. Hamdan, C. Noël, J. Ghanbaja, T. Belmonte, Comparison of Aluminium Nanostructures Created by Discharges in Various Dielectric Liquids, *Plasma Chem. Plasma Process.* 34 (2014) 1101–1114
- [21] R.D. Leapman, L.A. Grunes, P.L. Fejes, Study of the L₂₃ edges in the 3*d* transition metals and their oxides by electron-energy-loss spectroscopy with comparisons to theory, *Phys. Rev. B.* 26 (1982) 614–635
- [22] P. Ewels, T. Sikora, V. Serin, C. P. Ewels, L. Lajaunie, A Complete Overhaul of the Electron Energy-Loss Spectroscopy and X-Ray Absorption Spectroscopy Database: eelsdb.eu., *Microscopy and Microanalysis*, available on CJO2016. doi:10.1017/S1431927616000179.
- [23] F. Hofer, P. Golob, New examples for near-edge fine structures in electron energy loss spectroscopy, *Ultramicroscopy* 21 (1987) 379–384
- [24] A. Hamdan, C. Noël, J. Ghanbaja, T. Belmonte, Comparison of Aluminium Nanostructures Created by Discharges in Various Dielectric Liquids, *Plasma Chem. Plasma Process.* 34 (2014) 1101–1114

- [25] S. J. Northway, R. M. Brown, R. C. Fry, Atomic nitrogen spectra in the argon inductively coupled plasma (ICP), *Appl. Spectrosc.* 34 (1980) 338–348
- [26] R. E. Orville, A high-speed time-resolved spectroscopic study of the lightning return stroke: Part II. A quantitative analysis, *J. Atmos. Sci.* 25 (1968) 839–851
- [27] R. Sousa Martins, C. Zaepffel, L. Chemartin, Ph. Lalande, A. Soufiani, Characterization of a high current pulsed arc using optical emission spectroscopy, *J. Phys. D: Appl. Phys.* 49 (2016) 415205
- [28] R. Loch, J. Schopman, H. Wankenne, J. Momigny, The dissociative ionization of nitrogen, *Chemical Physics* 7 (1975) 393–404

CAPTIONS

Figure 1: a) Copper oxide (CuO) nanoparticles synthesized between two Cu electrodes immersed in liquid nitrogen and observed after air exposure at different scales by TEM. b) Zinc oxide (ZnO) sheets and nanoparticles synthesized between two Zn electrodes immersed in liquid nitrogen and observed after air exposure at different scales by TEM.

Figure 2: a) TEM overview of Cu@ZnO core-shell NPs. b) High-resolution TEM image showing the ZnO shell and the Cu core. c) Identification of hkl planes corresponding to spots 1 to 9 shown in the diffraction pattern d).

Figure 3: a) Electron Energy Loss Spectroscopy near-edge fine structures for the Cu L₂₃. b) Electron Energy Loss Spectroscopy near-edge fine structures for the Zn L₂₃. Reference spectra for CuO, Cu₂O, Cu are taken in [19] whereas reference spectra for Zn and ZnO are taken in [20] and [21] respectively.

Figure 4: Starting with zinc electrodes. a) TEM overview of Cu@ZnO core-shell NPs. b) High-resolution TEM image showing the ZnO shell and the Cu core. c) Identification of hkl planes corresponding to spots 1 to 9 shown in the diffraction pattern d).

Figure 5: Starting with zinc electrodes. a) Electron energy loss spectroscopy near-edge fine structures for the Cu L₂₃. b) Electron Energy Loss Spectroscopy near-edge fine structures for the Zn L₂₃. Reference spectra for CuO, Cu₂O, Cu are taken in [19] whereas reference spectra for Zn and ZnO are taken in [20] and [21] respectively.

Figure 6: Starting with zinc electrodes. Identification of weakly abundant Cu₂O@ZnO NPs. Energy-filtered transmission electron microscopy (EFTEM) images of a large Cu₂O@ZnO NP. a) overview. The circled area shows nanopores in the zinc shell. b) Copper map. c) Oxygen map. d) Zinc map.

Figure 7: a) TEM image showing $\text{Cu}_2\text{O}@Z\text{nO}$ NP. b) Corresponding diffraction pattern of $\text{Cu}_2\text{O}@Z\text{nO}$ NP shown in a). c) Identification of hkl planes corresponding to spots 1 to 7 shown in diffraction pattern b).

Figure 8: Schematic showing the formation mechanisms of core-shell nanoparticles. a) Cu NP is wrapped by zinc nanosheet. $\text{Cu}@Z\text{nO}$ NPs are formed after air exposition. b) Cu NP impacts zinc nanosheet and get fully coated. $\text{Cu}@Z\text{nO}$ NPs are formed after air exposition. b') Cu NP impacts zinc nanosheet and get partly coated. $\text{Cu}_2\text{O}@Z\text{nO}$ NPs are formed after air exposition.

Figure 9: Time-resolved optical emission spectra of a) discharges between zinc electrodes immersed in liquid nitrogen loaded in copper (18,000 discharges), b) discharges between copper electrodes immersed in liquid nitrogen loaded in zinc (18,000 discharges). Integration time: 50 ns. All spectra are normalized in intensity.

Figure 10: Time-resolved optical emission spectra recorded at 100 ns of discharges between copper electrodes immersed in liquid nitrogen loaded either with zinc NPs with zinc electrodes (18,000 discharges) or copper and zinc NPs obtained with brass ($\text{Cu}_{63}\text{Zn}_{37}$) electrodes (18,000 discharges).

Supplemental Material 1: EDXS line scanning profiles along two $\text{Cu}@Z\text{nO}$ core-shell nanoparticles synthesized by starting with zinc electrodes.

Supplemental Material 2: Optical emission spectrum recorded at 200 ns of discharges between copper electrodes immersed in liquid nitrogen loaded in zinc (18,000 discharges). Only N II lines and Cu I lines are detected. No Zn I lines are found. Integration time: 50 ns. The spectrum is normalized in intensity.

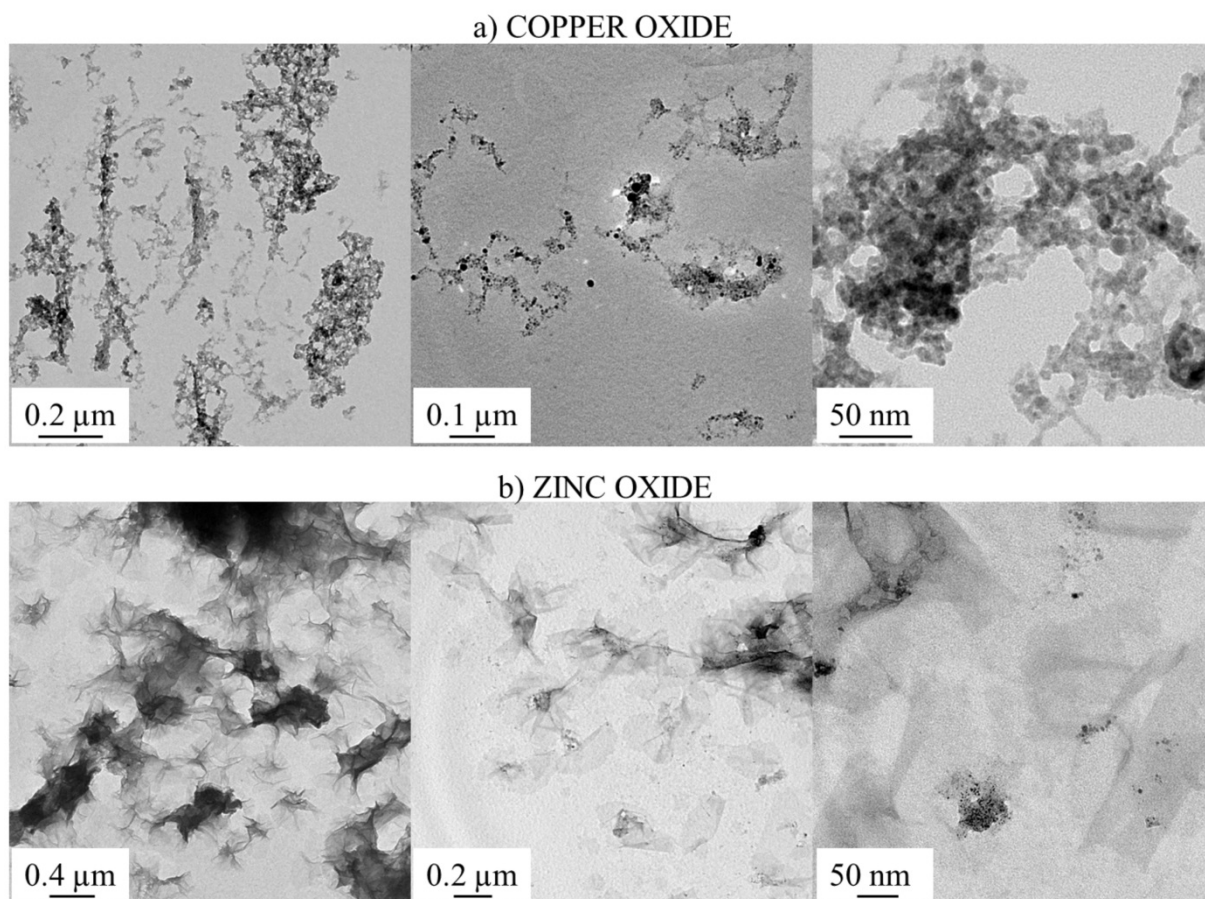


Figure 1: a) Copper oxide (CuO) nanoparticles synthesized between two Cu electrodes immersed in liquid nitrogen and observed after air exposure at different scales by TEM. b) Zinc oxide (ZnO) sheets and nanoparticles synthesized between two Zn electrodes immersed in liquid nitrogen and observed after air exposure at different scales by TEM.

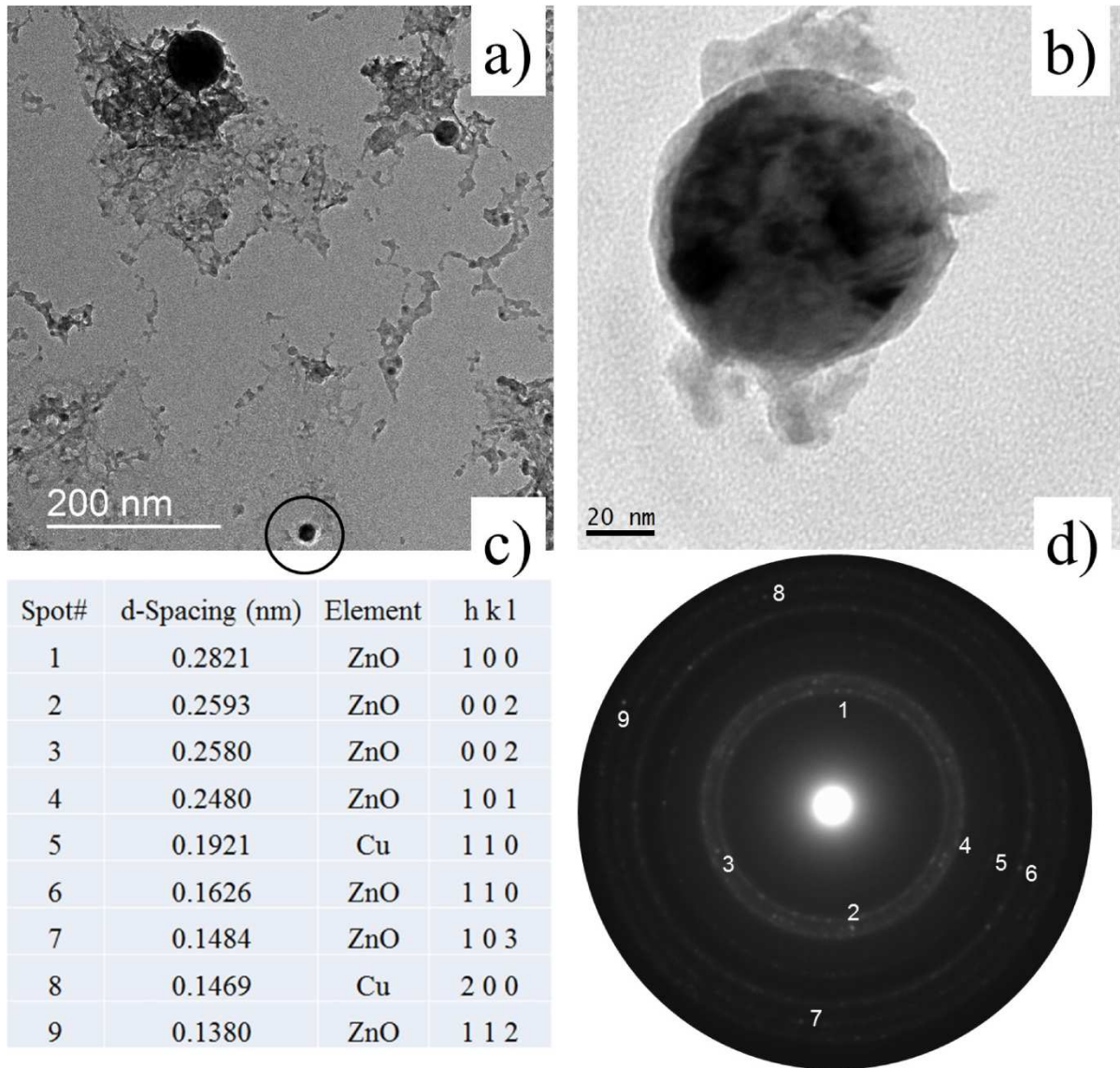


Figure 2: Starting with copper electrodes. a) TEM overview of Cu@ZnO core-shell NPs. b) High-resolution TEM image showing the ZnO shell and the Cu core of the particle circled in a). c) Identification of hkl planes corresponding to spots 1 to 9 shown in the diffraction pattern d).

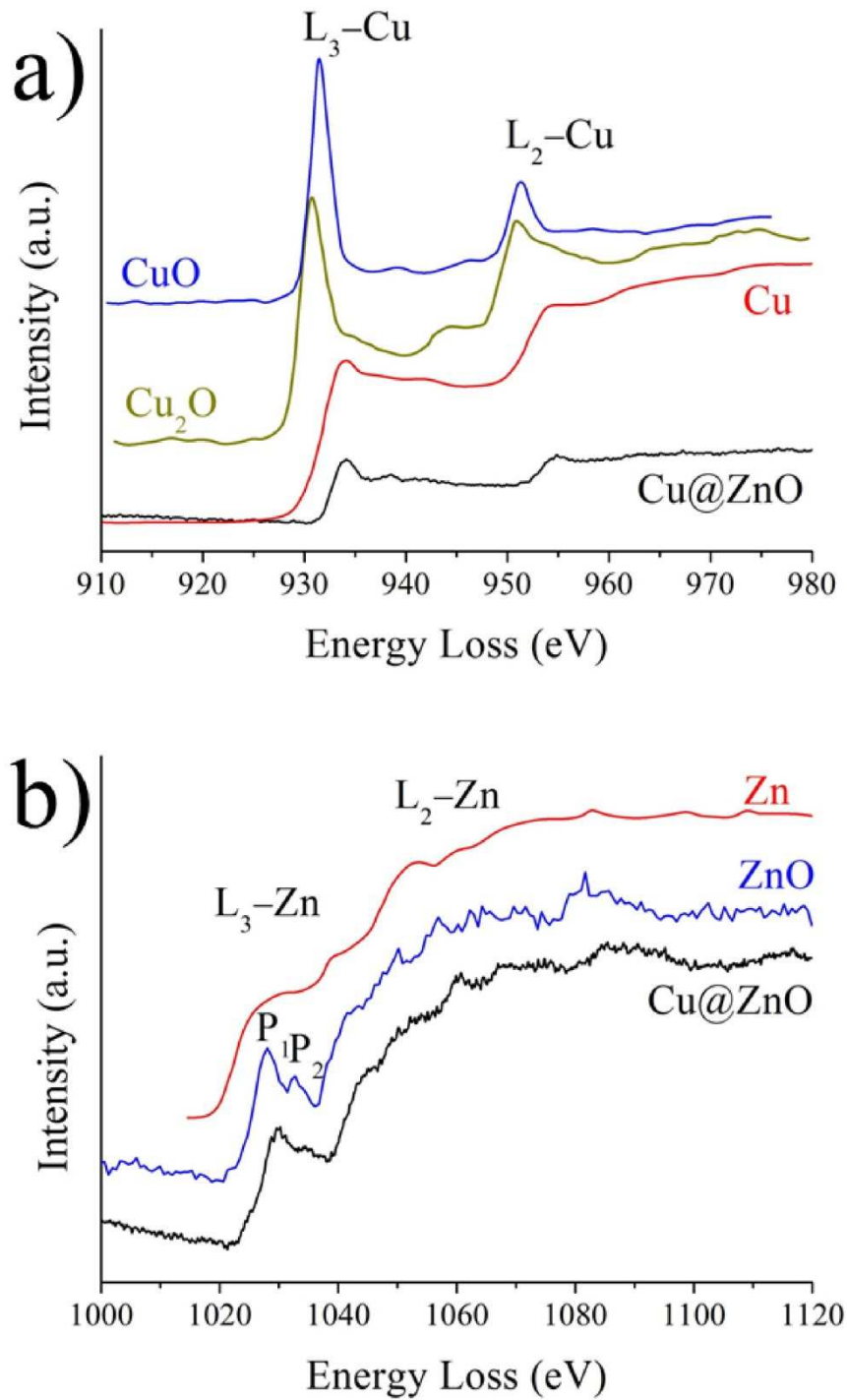


Figure 3: Starting with copper electrodes. a) Electron Energy Loss Spectroscopy near-edge fine structures for the Cu L₂₃. b) Electron Energy Loss Spectroscopy near-edge fine structures for the Zn L₂₃. Reference spectra for CuO, Cu₂O, Cu are taken in [19] whereas reference spectra for Zn and ZnO are taken in [20] and [21] respectively.

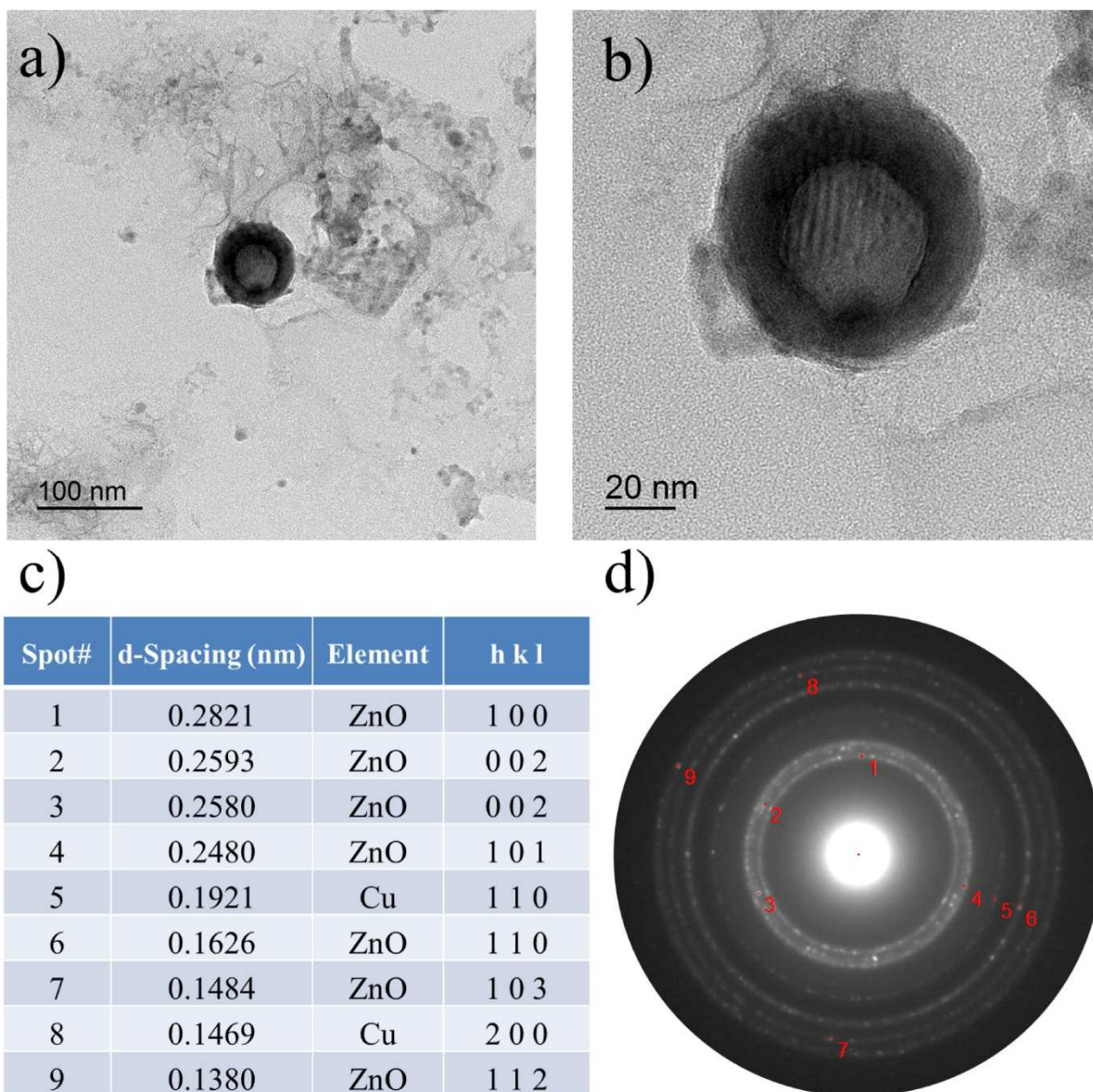


Figure 4: Starting with zinc electrodes. a) TEM overview of Cu@ZnO core-shell NPs. b) High-resolution TEM image showing the ZnO shell and the Cu core. c) Identification of hkl planes corresponding to spots 1 to 9 shown in the diffraction pattern d).

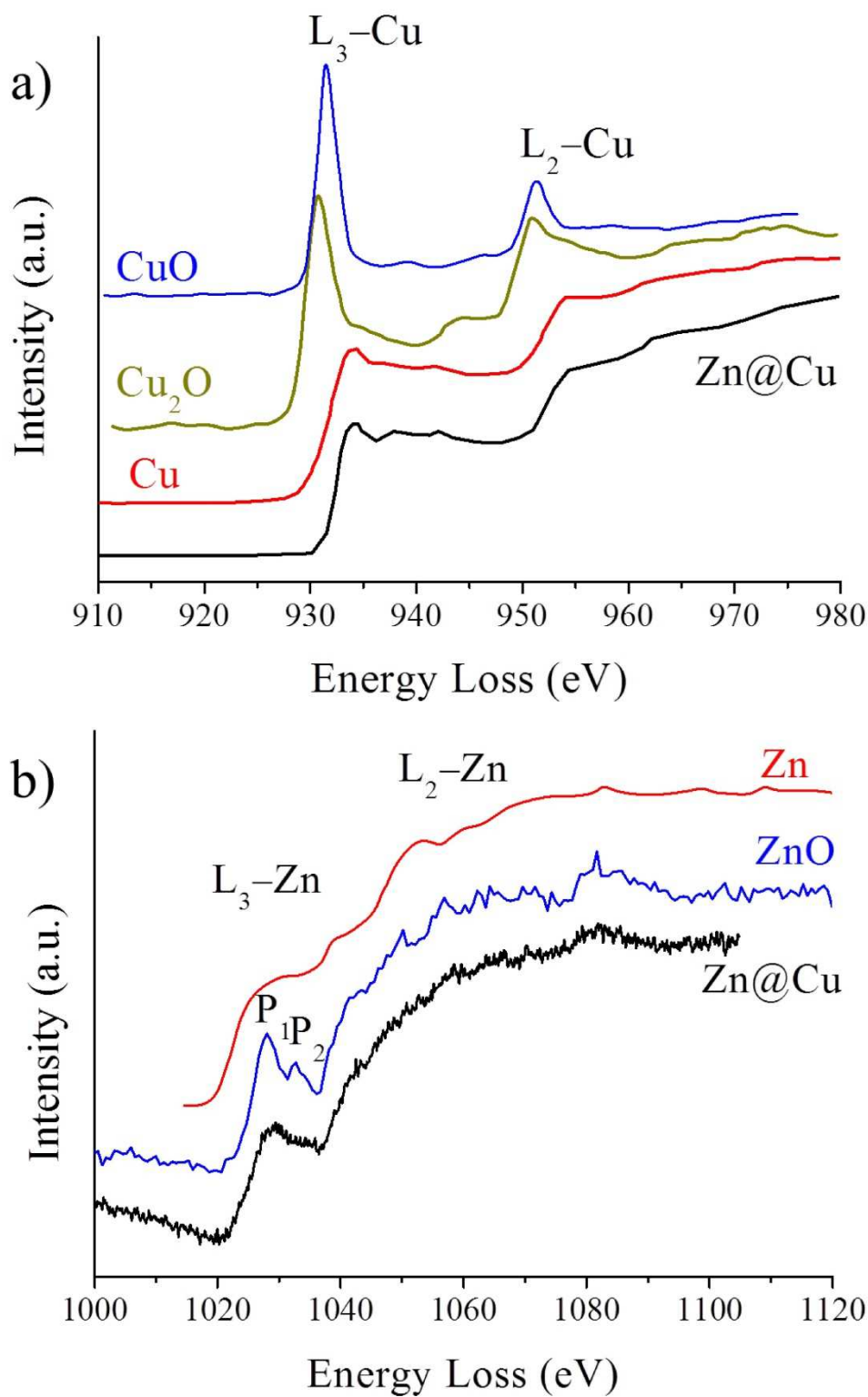


Figure 5: Starting with zinc electrodes. a) Electron Energy Loss Spectroscopy near-edge fine structures for the Cu L_{2,3}. b) Electron Energy Loss Spectroscopy near-edge fine structures for the Zn L_{2,3}. Reference spectra for CuO, Cu₂O, Cu are taken in [19] whereas reference spectra for Zn and ZnO are taken in [20] and [21] respectively.

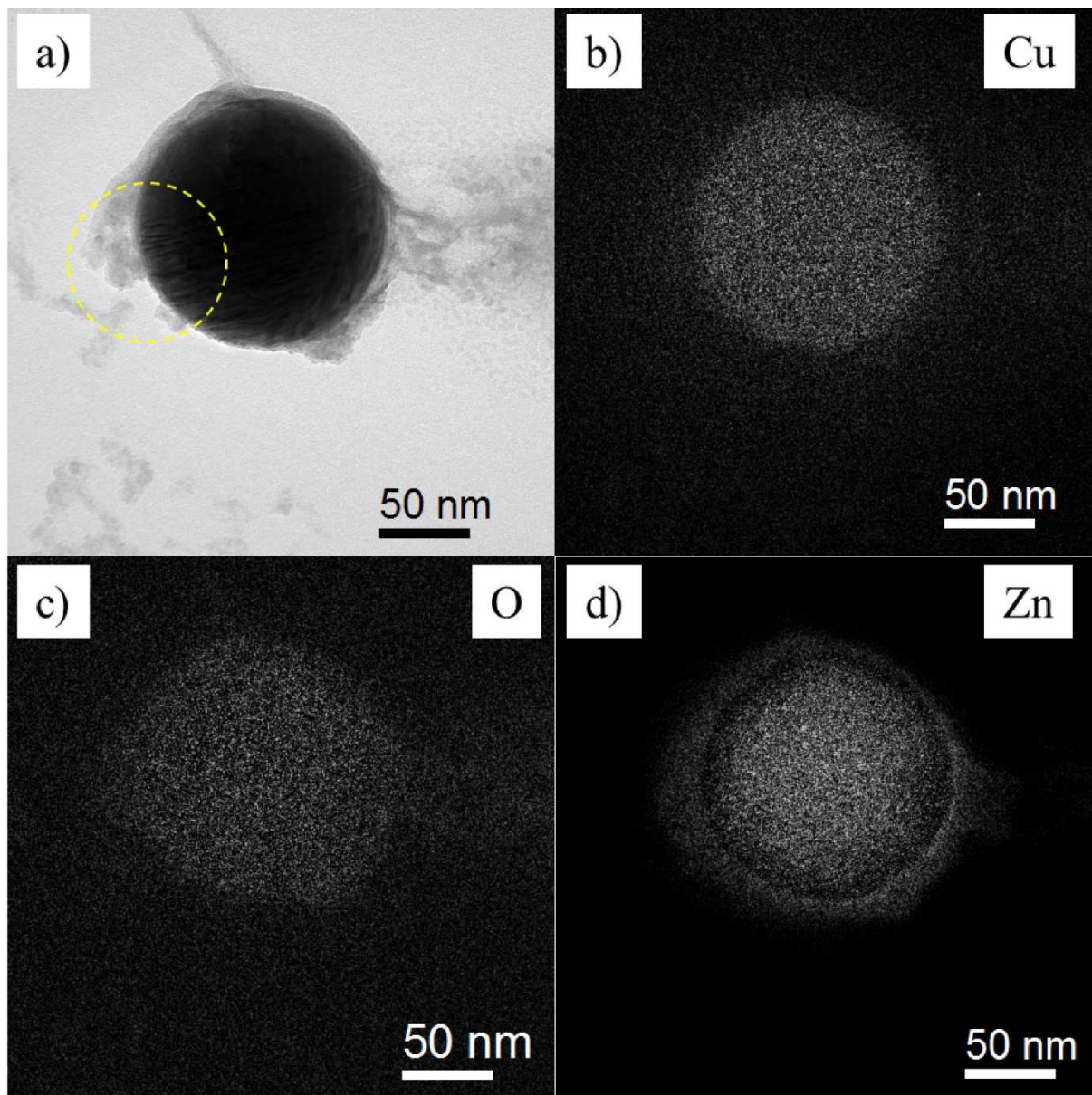


Figure 6: Starting with zinc electrodes. Identification of weakly abundant Cu₂O@ZnO NPs. Energy-Filtered Transmission Electron Microscopy (EFTEM) images of a large Cu₂O@ZnO NP. a) overview. The circled area shows nanopores in the zinc shell. b) Copper map. c) Oxygen map. d) Zinc map.

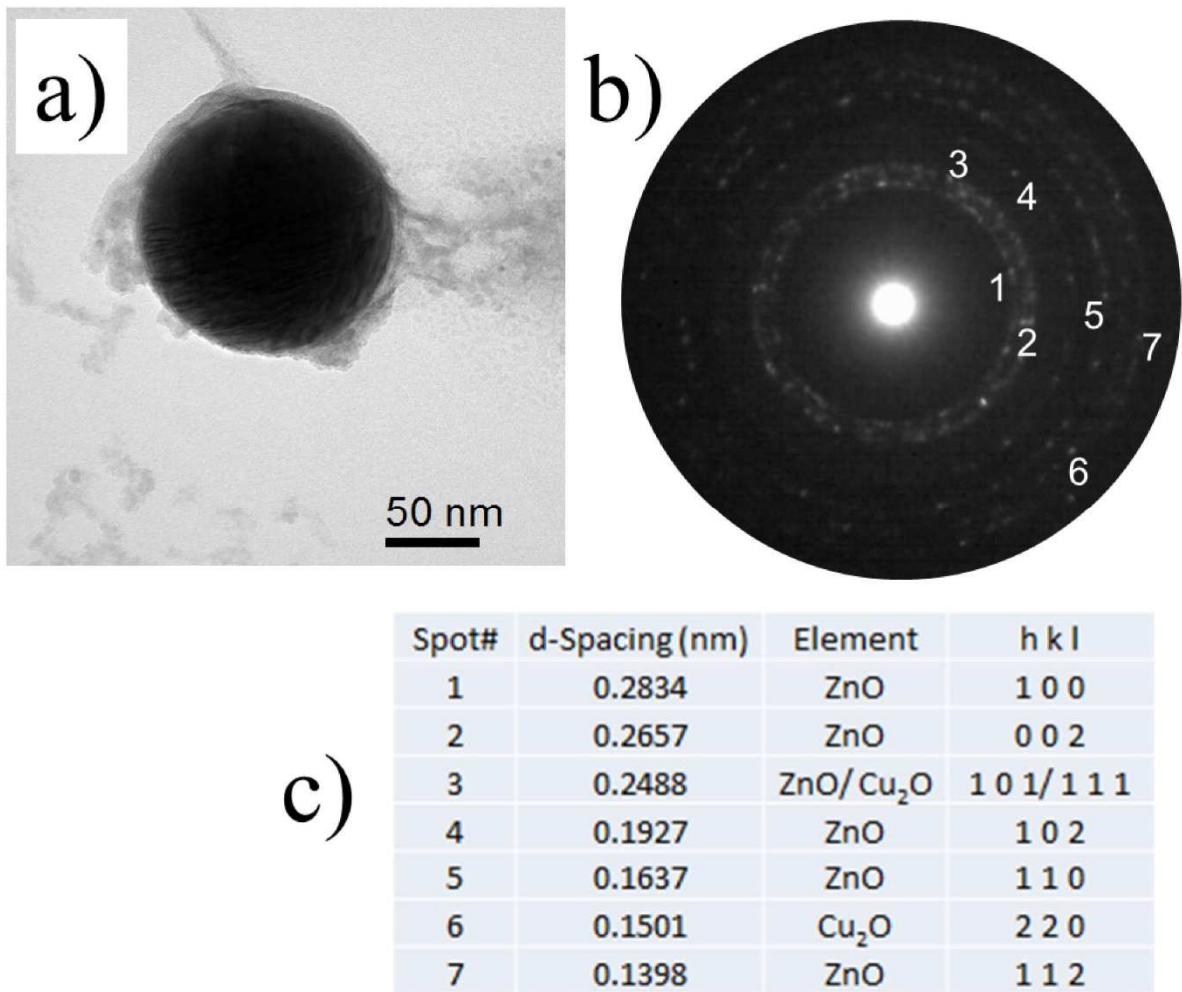


Figure 7: a) TEM image showing Cu₂O@ZnO NP. b) Corresponding diffraction pattern of Cu₂O@ZnO NP shown in a). c) Identification of hkl planes corresponding to spots 1 to 7 shown in diffraction pattern b).

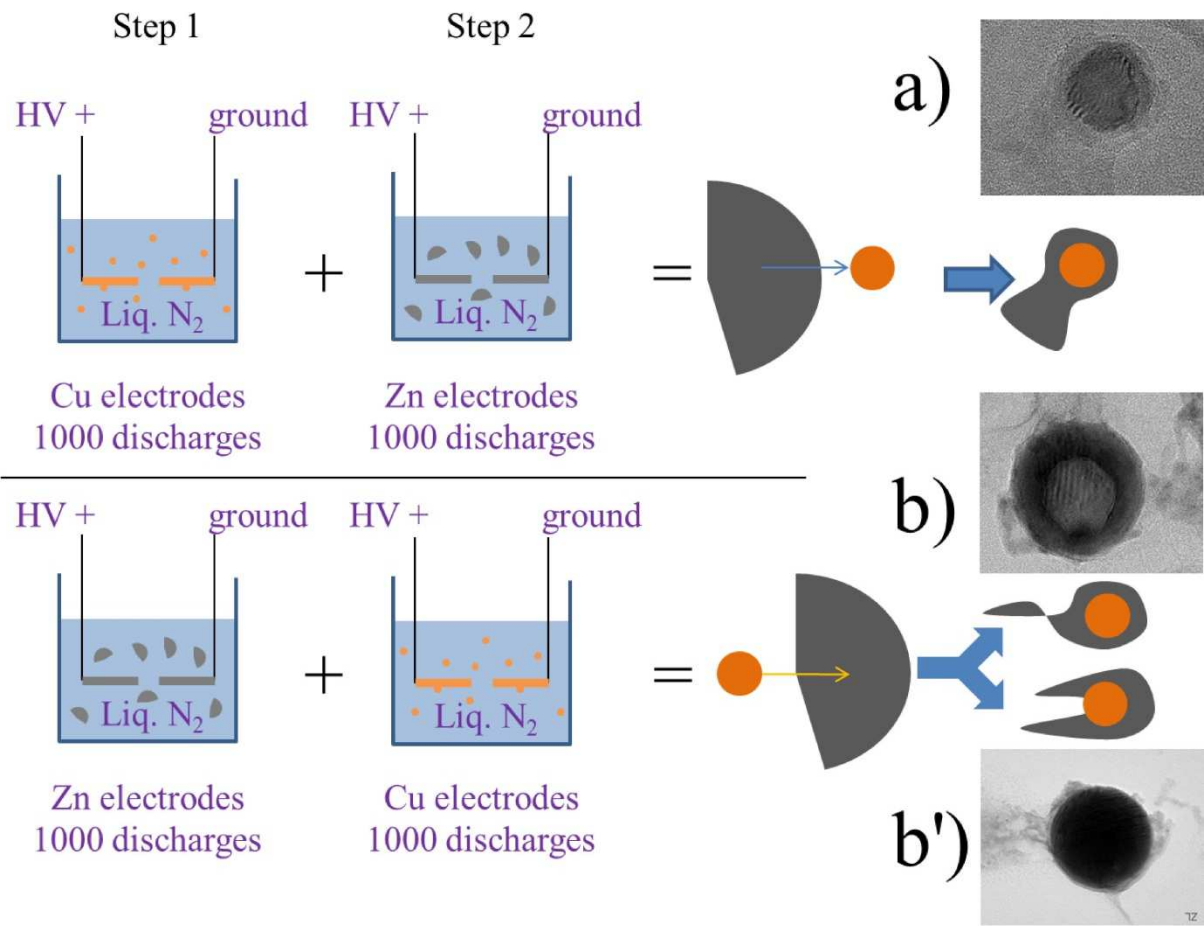


Figure 8: Schematic showing the formation mechanisms of core-shell nanoparticles. a) Cu NP is wrapped by zinc nanosheet. Cu@ZnO NPs are formed after air exposition. b) Cu NP impacts zinc nanosheet and get fully coated. Cu@ZnO NPs are formed after air exposition. b') Cu NP impacts zinc nanosheet and get partly coated. Cu₂O@ZnO NPs are formed after air exposition.

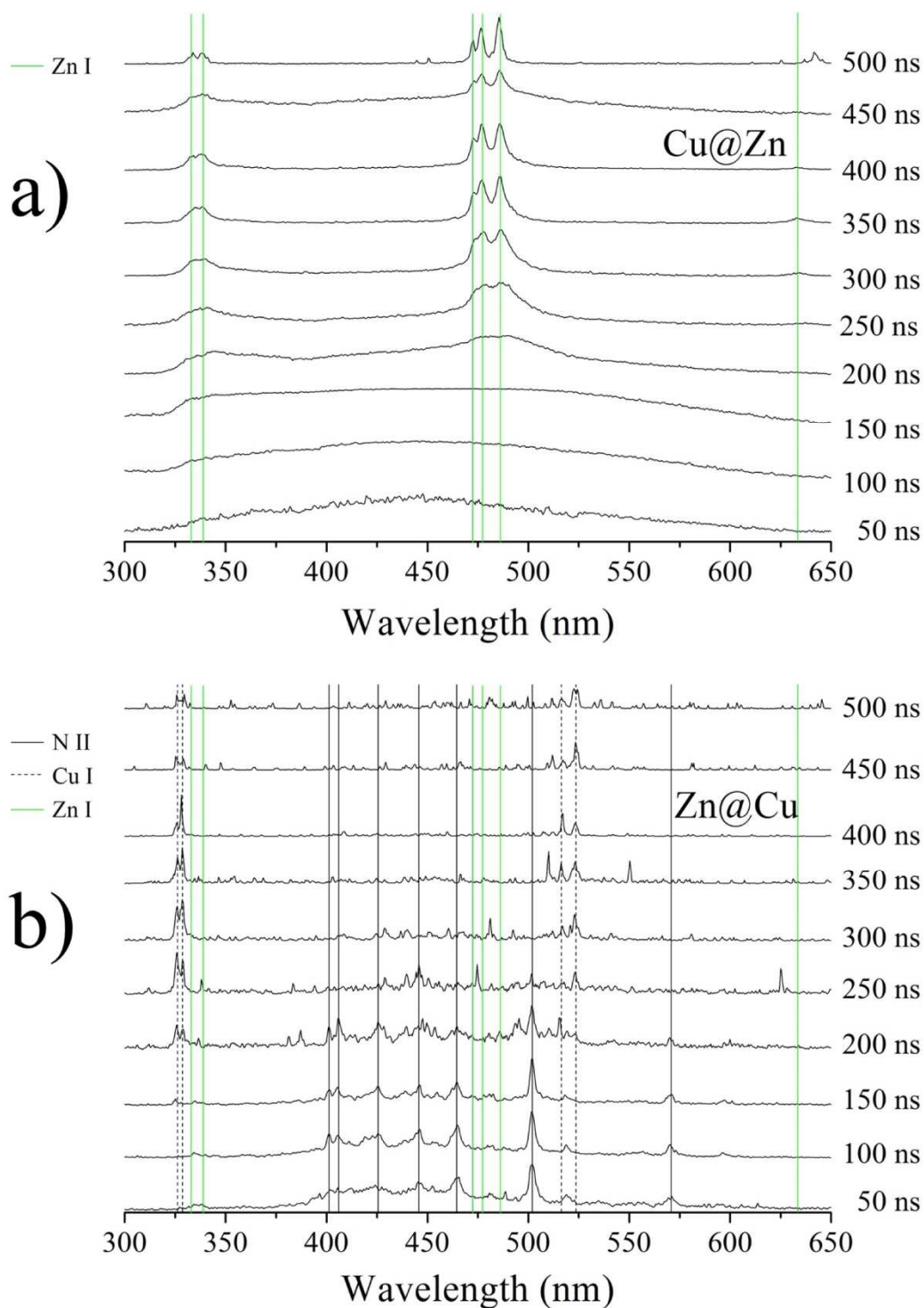


Figure 9: Time-resolved optical emission spectra of a) discharges between zinc electrodes immersed in liquid nitrogen loaded in copper (18,000 discharges), b) discharges between copper electrodes immersed in liquid nitrogen loaded in zinc (18,000 discharges). Integration time: 50 ns. All spectra are normalized in intensity.

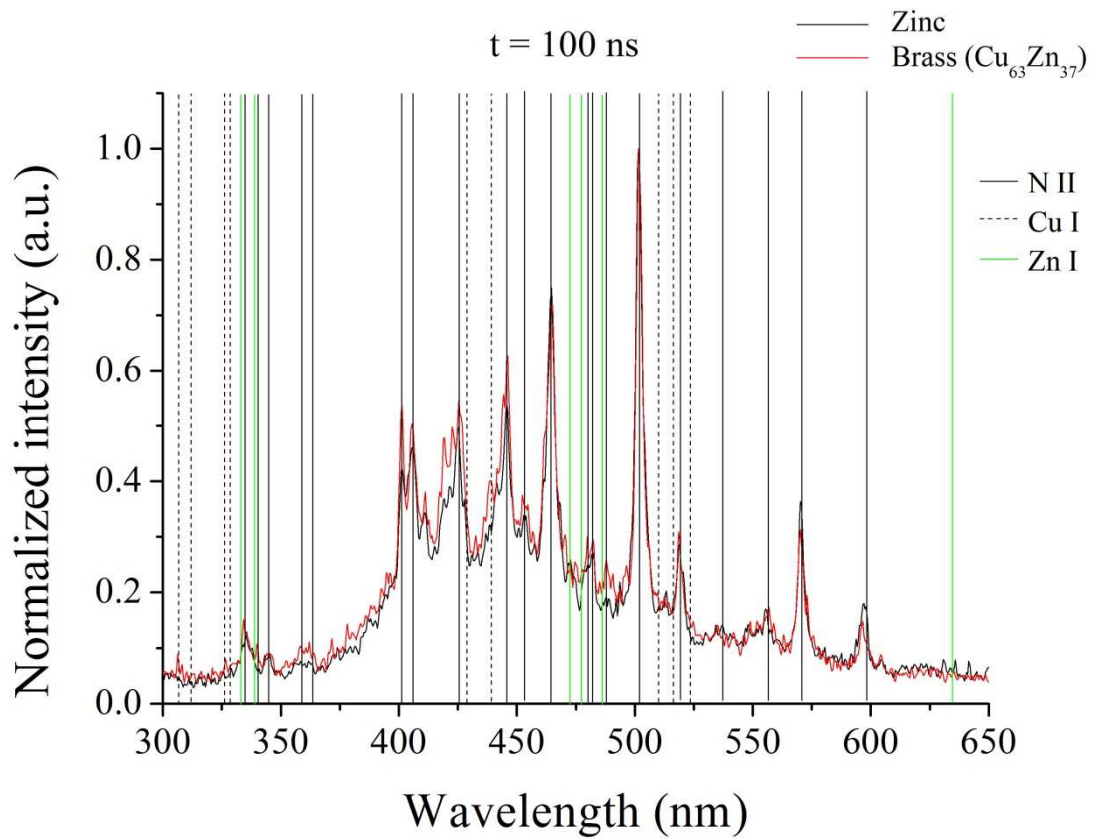
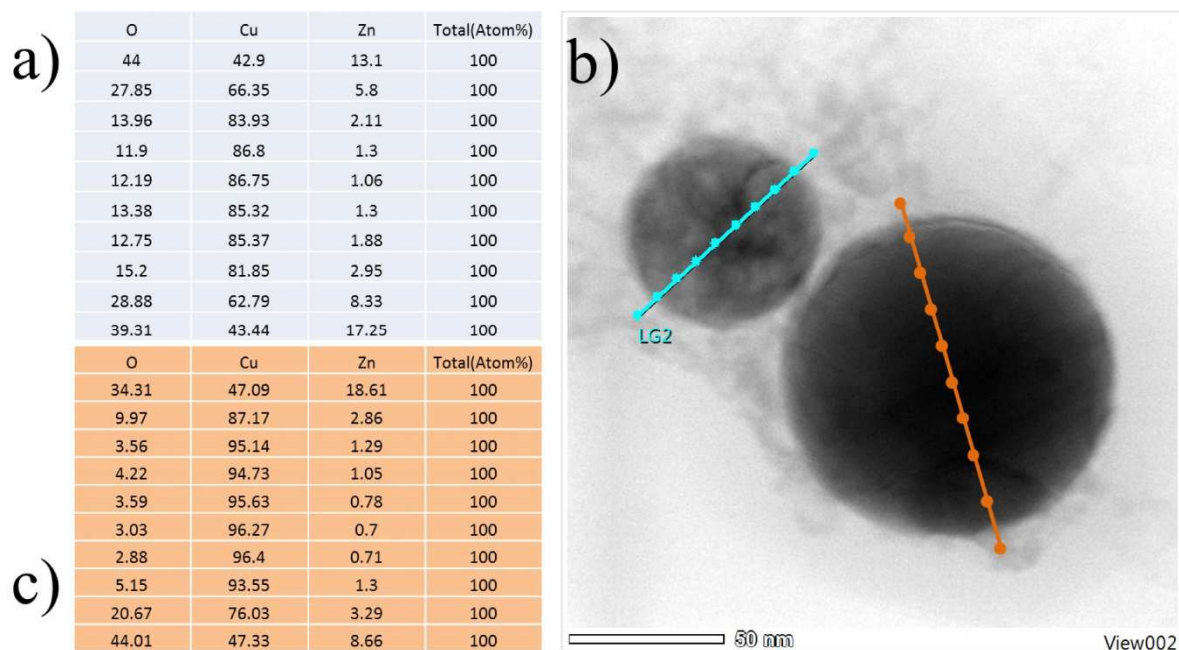


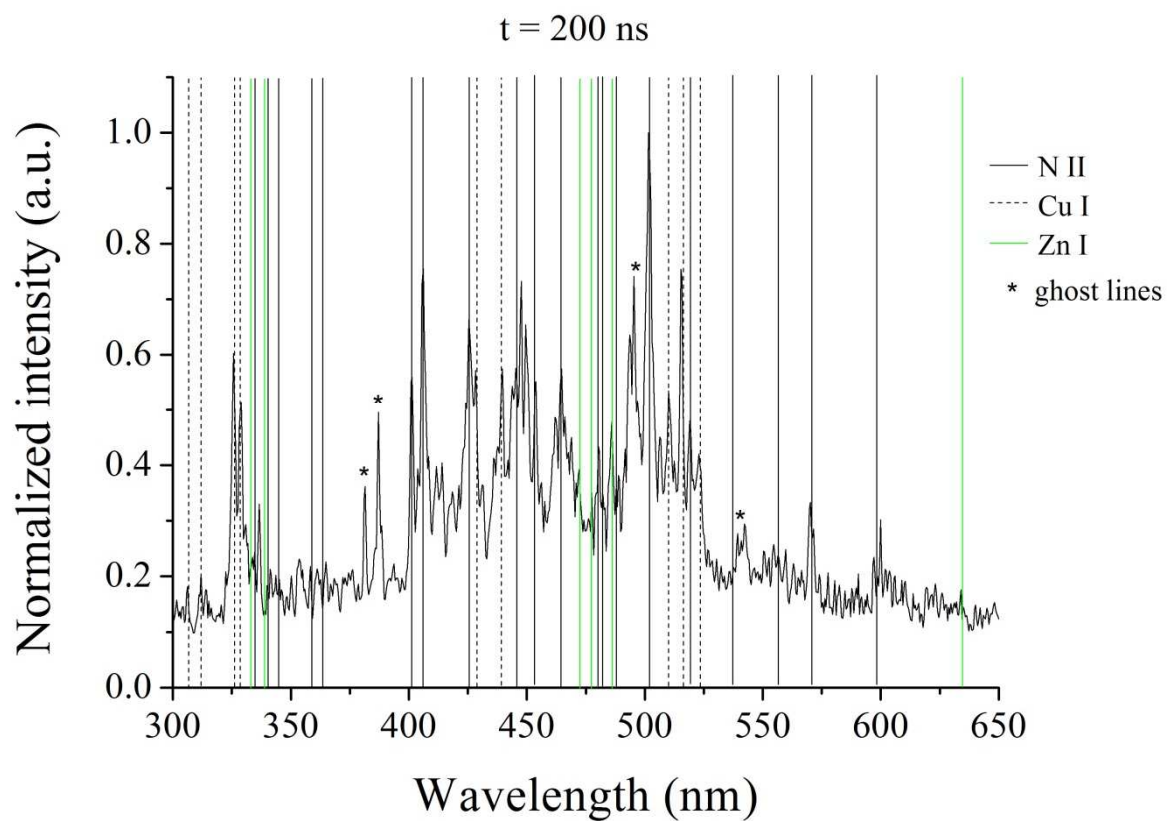
Figure 10: Time-resolved optical emission spectra recorded at 100 ns of discharges between copper electrodes immersed in liquid nitrogen loaded either with zinc NPs with zinc electrodes (18,000 discharges) or copper and zinc NPs obtained with brass (Cu₆₃Zn₃₇) electrodes (18,000 discharges).

SUPPLEMENTAL MATERIAL 1



Supplemental Material 1: EDXS line scanning profiles along two Cu@ZnO core-shell nanoparticles synthesized by starting with zinc electrodes.

SUPPLEMENTAL MATERIAL 2



Supplemental Material 2: Optical emission spectrum recorded at 200 ns of discharges between copper electrodes immersed in liquid nitrogen loaded in zinc (18,000 discharges). Only N II lines and Cu I lines are detected. No Zn I lines are found. Integration time: 50 ns. The spectrum is normalized in intensity.