



HAL
open science

A new size-exclusion chromatography method for fast rapeseed albumin and globulin quantification

Claire Defaix, Arnaud Aymes, Sara Albe Slabi, Mélody Basselin, Christelle Mathé, Olivier Galet, Romain Kapel

► To cite this version:

Claire Defaix, Arnaud Aymes, Sara Albe Slabi, Mélody Basselin, Christelle Mathé, et al.. A new size-exclusion chromatography method for fast rapeseed albumin and globulin quantification. *Food Chemistry*, 2019, 287, pp.151-159. 10.1016/j.foodchem.2019.01.209 . hal-02343223

HAL Id: hal-02343223

<https://hal.univ-lorraine.fr/hal-02343223v1>

Submitted on 22 Oct 2021

HAL is a multi-disciplinary open access archive for the deposit and dissemination of scientific research documents, whether they are published or not. The documents may come from teaching and research institutions in France or abroad, or from public or private research centers.

L'archive ouverte pluridisciplinaire **HAL**, est destinée au dépôt et à la diffusion de documents scientifiques de niveau recherche, publiés ou non, émanant des établissements d'enseignement et de recherche français ou étrangers, des laboratoires publics ou privés.



Distributed under a Creative Commons Attribution - NonCommercial 4.0 International License

17 **Abstract**

18 The method described in the article aims at the quantification of both main storage proteins,
19 globulins and albumins, in aqueous extract from rapeseed, as an alternative to the current
20 reference methods, Kjeldahl and SDS-PAGE electrophoresis. The new method lies on the analytical
21 separation of extracted compounds by Size-Exclusion High Performance Liquid Chromatography
22 (SE-HPLC) (Biosep-SEC-s2000, 5 μm). The elution of rapeseed extracts with
23 water/acetonitrile/trifluoroacetic acid (45/55/0.1 % v/v) during 30 minutes yields two distinct
24 peaks for the main proteins of rapeseed. Based on the protein extinction coefficients, a
25 calibrationless methodology was developed for their quantification on the basis of the UV signal.
26 The SE-HPLC method was successfully compared to references: Kjeldahl and SDS-PAGE
27 densitometry for the determination of the proportion of each protein. Then, it was successfully
28 applied on two other oleoproteagineous plants, linseed and sunflower.

29 **Keywords:** rapeseed proteins, albumins, globulins, SE-HPLC, quantification

30 **1. Introduction**

31 According to FAO statistics, in 2016, rapeseed was the second most produced oilseed after
32 soybeans in the world with a respective production of 69 million tons and 335 million tons.
33 Whereas, for sunflower seeds and linseeds, 47 and 3 million tons were produced during the same
34 year (FAOStats, 2018). Because of their richness in fibers and proteins, meals obtained after oil
35 extraction are currently used as a commodity . These proteins are also interesting for human
36 nutrition due to their nutritional properties (World Health Organisation, 2007).

37 In oilseed meals, 2 S and 11-12 S proteins constitute the main protein fractions. In rapeseed, 2 S
38 proteins are called albumins or napins, with a molecular weight (MW) of 10 to 15 kDa. They
39 represent between 30 and 40 % of the total proteins in rapeseed. Among their interesting

40 properties are foaming and emulsifying activities. 12 S protein are called globulins, or cruciferins,
41 and their MW is between 300 and 350 kDa. They represent 50 to 55 % of the total proteins and
42 are suitable to form gels (Crouch & Sussex , 1981) (Aider & Chockry, 2011). In flaxseed and
43 sunflower, similar structure exist with slight variations (Chung, Lei, & Li-Chan, 2005). (Gonzalez-
44 Pérez & Vereijken, 2007).

45 Currently, protein quantification in aqueous extracts is often done from nitrogen quantification by
46 Kjeldahl method (Sáez-Plaza, Michałowski, Navas, Asuero, & Wybraniec, 2013). The protein
47 amount is deduced from the nitrogen content using a conversion factor (often 6.25 for rapeseed
48 proteins). However, this value has been criticized over the years as it depends on the protein
49 under study (Mariotti, Tomé , & Patureau Mirand, 2008). Furthermore, other biomolecules
50 contain nitrogen. This is taken into account by using another Kjeldahl analysis after selective
51 protein precipitation by trichloroacetic acid (TCA). Eventually, this method gives an overall protein
52 concentration and does not allow specific albumin or globulin quantification. Spectrophotometric
53 methods like BCA or Lowry's method can alternatively be used. These methods are fast with
54 automated microplate systems. But polyphenols co-extracted bias the quantification
55 (Stepanchenko, Novikova, & Mosh, 2011).

56 SDS-PAGE separates the polypeptides of a complex mixture according to their size (Chiou & Wu,
57 1999). By densitometry, it is possible to compare the intensity of protein bands (colored by
58 Coomassie blue) and to get an estimated protein content. But this method is long and the results
59 are likely biased . Alternatively, chromatographic methods have been developed to this day to
60 identify and quantify proteins from plants such as rapeseed (Boukroufa, et al., 2017). Even though
61 these methods discriminate between types of proteins, none allows a clear quantification of the
62 protein content.

63 The hypothesis of this work is that SE-HPLC can be used to accurately quantify the protein content
64 and the proportion of globulins / albumins in rapeseed extract in order to do a follow-up of
65 protein production processes. The methodology described hereafter is calibrationless: amino acids
66 sequences were used to determine two parameters, the extinction coefficient and the nitrogen-
67 to-protein conversion factor used in the Kjeldahl analysis.

68 The first step consisted of a proof of concept of the ability of the method to separate both
69 proteins. Secondly, two validation steps were carried out using homemade protein isolates. They
70 were used to compare the proposed method to: (i) the Kjeldahl regarding the quantification of the
71 protein content; (ii) and to SDS-PAGE densitometry for the determination of the proportion of
72 each protein in a sample. Thirdly, the SE-HPLC method was compared to both previously cited
73 reference methods for the analysis of aqueous extracts of proteins. Fourthly, a stability study was
74 conducted on the aqueous extracts . Finally, the methodology was applied to two other
75 oleoproteaginous plants: sunflower and flaxseed.

76 **2. Materials and methods**

77 **2.1. Materials**

78 **2.1.1. Meals**

79 The rapeseed meal used was provided by Olead (Pessac, France): after pressing, a step of oil
80 extraction was carried out with hexane followed by a heating step at 86 °C for 60 minutes to
81 remove the solvent. Its composition was 37.5 % protein, 35.8 % of total dietary fibers, 7.7 % of
82 carbohydrates, 9.4 % of phytates, 7.3 % of minerals, 3.8% water, 2.0 % of polyphenols and 1 %
83 residual oil on a dry matter basis.

84 Linseed and sunflower meals were also provided by Olead (Pessac, France). Both were subjected
85 to a desolventation with hexane after the pressing step.

86 2.1.2. Chemical reactants

87 Sodium chloride and sodium hydroxide pellets were provided by VWR (Radnor, Pennsylvania,
88 USA). Chlorhydric acid at 37 % was provided by Carlo Erba (Val-de-Reuil, France).

89 Production of rapeseed protein isolates Albumins and globulins and total proteins were extracted
90 and purified for method calibration and validation. The extraction step was carried out in aqueous
91 medium at room temperature with a solid-liquid ratio of 1:9, 0.1 M NaCl and 0.5 g.L⁻¹ ascorbic acid
92 (Sigma-Aldrich, Saint-Louis, USA) to prevent oxidation. pH was adjusted to 7 with a solution of
93 NaOH 2 M under agitation. The extraction duration was 30 minutes and the pH was maintained at
94 7. The solid-liquid separation was realized with a Heraeus Megafuge 16 R centrifugation system
95 (Thermo Scientific, Waltham, Massachusetts, USA) at 10,000 g for 30 minutes. The supernatant
96 was recovered and filtered and the solid was discarded. This first step was common to the
97 production of all three proteins. Purification was achieved by an ultrafiltration procedure with an
98 Äkta Flux 6 (GE Healthcare, Chicago, Illinois, USA) using 4800 cm² hollow fibers cartridges (GE
99 Healthcare, Chicago, Illinois, USA) at 2 L/min feed flow and a transmembrane pressure of 1.5 bars.
100 Albumins and globulins were separated using a 500 kDa cut-off membrane. During diafiltration,
101 water or salted water was added to the retentate at the same flow rate as the permeate leaving
102 the system to keep the volume in the retentate constant. Each volume of water equal to the
103 volume of the retentate is called a diavolume (DV). After 7 diavolumes with salted water (0.2 M
104 NaCl), the permeate rich in albumins was recovered, concentrated 5 times and diafiltrated with 8
105 DV of water using a 3 kDa membrane. The retentate, rich in globulins, was further purified with
106 the 500 kDa membrane using 3 DV of salted water followed by 2 DV of deionized water. Total
107 proteins were directly purified by diafiltration with the 3 kDa membrane with 10 DV of deionized
108 water. Final retentates were freeze dried with a LTD type GZL-0.5 system (Shanghai
109 Pharmaceutical Machinery Co., Shanghai, China).

110 To determine purity of all three powders, solutions at a concentration of 5 g.L⁻¹ of powder were
111 prepared and homogeneous samples were analyzed according to the official AOAC 979.09 Kjeldahl
112 method (6.25 nitrogen-to-protein conversion factor). Purity was expressed as the ratio of the thus
113 measured protein content divided by the theoretical concentration of the solution.

$$114 \quad Purity = \frac{Protein\ content\ by\ Kejdahl\ method}{Powder\ content} \quad (1)$$

115 After freeze-drying, the powders were characterized as follow: 6 % of water, 102 % of proteins and
116 4 % of phytic acid for albumins; 2 % water, 72 % proteins and 2 % phytic acid regarding globulins; .
117 The total proteins isolate was composed of 5 % water, 94.5 % proteins and 3 % phytic acid. The dry
118 matter was determined according to the method ISO 638:2008. The protein content of the
119 powder corresponds to the purity described previously. The nitrogen-to-protein conversion factor
120 was 6.25 as it is the mostly used value even though it probably overestimates the protein content.
121 And the phytic acid content was determined following the method developed by García-Estepa *et*
122 *al.* (Garcia-Estepa, Guerra-Hernandez, & Garcia-Villanova, 1999).

123 **2.2. Determination of protein content by Kjeldahl method**

124 Samples were analyzed according to the official AOAC 979.09 Kjeldahl method. The samples were
125 prepared with 4 mL of sulfuric acid (Sigma-Aldrich, Saint-Louis, USA) and a spatula of catalyst Cu-
126 Se (AppliChem, Gatersleben, Germany). The mineralization step was carried out by heating the
127 flasks at 450 °C for 90 minutes in a Büchi SpeedDigester K-439 (Rungis, France): The distillation
128 step took place in a Kjelflex K-360 (Büchi, Rungis, France) with sodium hydroxide 32 % (VWR,
129 Radnor, Pennsylvania, USA) and boric acid (Sigma-Aldrich, Saint-Louis, USA) prepared in solution at
130 3 %. The titration was carried out with 0.01 M HCl (Honeywell, Morris Plains, New Jersey, USA) in a
131 Titrino Plus 877 from Metrohm (Herisau, Switzerland).

132 To determine non protein nitrogen, extracts were diluted twice with a 40 % (w/v) trichloroacetic
133 acid TCA (Sigma-Aldrich, Saint-Louis, USA), stirred 30 minutes and centrifuged at 15000 g. The
134 supernatant was analyzed by the Kjeldahl method.

135 **2.3. SDS-PAGE assay and quantification by densitometry**

136 SDS-PAGE reagents were from Bio-Rad (Hercules, California, USA). Two standard protein ladders
137 were used: the first between 10 and 250 kDa and the second between 1.4 and 26.6 kDa. Samples
138 were prepared according to Laemmli method (Laemmli, UK 1970) in reducing conditions and
139 migrated on a 5 % acrylamide stacking gel and a 17 % separation gel. The coloration was achieved
140 by Coomassie blue G 250 (Sigma-Aldrich, Saint-Louis, USA). For each SDS-PAGE assay, a standard
141 molecular weight kit was used (Bio-Rad Precision Plus Protein Standard) allowing the
142 determination of molecular weights between 10 and 250 kDa. For band densitometry analysis, a
143 free and open source software developed by the National Institutes of Health (Bethesda,
144 Maryland, USA) called ImageJ was used. From pictures of SDS-PAGE gels, the intensity of the
145 coloration for each band of the gel was determined. A calibration was carried out on globulins and
146 albumins isolate solutions from 0.2 to 4 g.L⁻¹ before determination on the aqueous extracts.

147 The calibration plots for each protein showed a good correlation, with respective R² of 0.98 and
148 0.96 (data not shown) for globulins and albumins. However, the linear portion of the calibration is
149 narrow: protein content should be between 0.2 and 0.8 g.L⁻¹ for a reliable determination.

150 **2.4. Quantification of proteins by SE-HPLC**

151 **2.5.1 Elution method**

152 SE-HPLC acetonitrile was provided by Biosolve BV (Valkenswaard, the Netherlands) and ultrapure
153 water was generated by a system Purelab Ultra by Elga (High Wycombe, United Kingdom). The
154 chromatographic system was a UFLC machine from Shimadzu (Kyoto, Japan) and the column,

155 Biosep-SEC-s2000 300 x 7.8 mm, 5 µm, was provided by Phenomenex (Torrance, California, USA).
156 Its separation range (300 kDa – 1 kDa) was chosen because of the molecular sizes of albumins and
157 globulins (14 kDa and 300 kDa, respectively).

158 The mobile phase was 45 % acetonitrile, 55 % ultrapure water and 0.1 % of trifluoroacetic acid
159 (TFA) from ThermoFisher (Waltham, Massachusetts, USA). Elution was done at 0.6 mL / min flow
160 during 30 minutes. The calibration of the chromatographic column was realized using a gel
161 filtration markers kit for protein molecular weights between 12 kDa and 200 kDa from Sigma-
162 Aldrich (Saint-Louis, USA).

163 2.5.2 Quantification method

164 Liquid samples from aqueous extraction or solutions prepared from isolates were filtered on 0.22
165 µm membranes from Pall (Port Washington, New York, USA). The injection volume was 5 µL and
166 the detection was set to 214 nm. For calibration, a 20 g.L⁻¹ (w/v) solution was diluted in a 0.1 M
167 phosphate buffer pH 7 (Sigma-Aldrich, Saint-Louis, USA) to obtain concentrations of 20, 15, 12.5,
168 10, 7.5, 5 and 1 g.L⁻¹. Each stock solution was prepared in triplicate and analyzed using the SE-HPLC
169 method. The protein content of each stock solution was also quantified according to the Kjeldahl
170 method.

171 Data were extracted and processed for integration using an Excel (Microsoft, Redmond,
172 Washington, USA) spreadsheet in order to retrieve the mass of protein injected. First, peaks were
173 integrated:

$$174 \quad \text{Area} = \int_{V_0}^{V_f} A. dV \quad (4)$$

175 In this equation, V₀ and V_f correspond to the elution volume at the beginning and at the end the
176 protein peak and A is the intensity of the signal.

177 And according to Beer-Lambert law: $A = \epsilon \cdot l \cdot C$ with ϵ , the extinction coefficient, and l the length
178 of the detection cell.

$$179 \quad \text{Area} = \int_{V_0}^{V_f} \epsilon \cdot l \cdot C \cdot dV = \epsilon \cdot l \cdot \int_{V_0}^{V_f} C \cdot dV = \epsilon \cdot l \cdot m_{\text{protein injected}} \quad (5)$$

180 Because the detection of the proposed method is UV, a key parameter **was** ϵ , the extinction
181 coefficient. According to Kuipers and Gruppen in a paper from 2007 (Kuipers & Gruppen, 2007),
182 this value **was** calculated at 214 nm. Subsequently the mass of protein in each sample can be
183 determined.

$$184 \quad m_{\text{protein injected}} = \frac{\text{Area}}{\epsilon \cdot l} \quad (6)$$

185 **2.5. Validation of the method**

186 **2.5.1. Aqueous extraction of proteins**

187 In order to validate the proposed method, aqueous extractions were carried out under several
188 conditions of pH (from 2 to 9) and salt content (from 0 to 0.3 M). To do so, 10 g of meal was used
189 at a ratio of 10 % solid-liquid. pH was adjusted with NaOH or HCl 1 M. Each extraction was carried
190 out during 30 minutes. A centrifugation step allowed the recovery of the extract.

191 **2.5.2. Stability of protein extracts**

192 The SE-HPLC analyses of the extracts previously described were compared after 24 hours of
193 storage under three different conditions: at room temperature, 4 °C or -20 °C. The difference of
194 area under protein peaks between time 0 and after 24 hours of storage are compared to assess
195 extracts stability.

196 **2.5.3. Statistical analysis to compare the methods**

197 **In order to compare the SE-HPLC to the references methods, a statistical analysis was carried out**
198 **in two steps with Excel (Microsoft, Redmond, Washington, USA). First, a Fisher-test was done in**

199 order to compare the variances of the three repetitions of both methods for each validation point.
200 If p-value is superior to 5 %, the variances are deemed equal. The equality or inequality of
201 variances is an input necessary to carry out the next test. Then, a Student T-test was realized in
202 order to compare the expectations taking into account the equality or inequality of variances. If
203 the p-value is superior to 5 %, the expectations of both populations (from the two different
204 methods) were deemed equal and thus, the methods were comparable for the given point of
205 validation.

206 **2.5.4. Validation of the method according to the ICH validation guide**

207 Another step of validation was based on the determination of values advised by the International
208 Conference on Harmonisation (ICH) of technical requirements for registration of pharmaceuticals
209 for human use (Validation of Analytical Procedures: Text and Methodology Q2(R1) , 2005). Hence,
210 linearity was established using 7 concentrations for albumins and for globulins. The correlation
211 coefficient, the y-intercept and the slope of the regression line were determined. The range
212 corresponds to the minimum and maximum concentrations analyzed in the present study, taking
213 into account the purity of the isolates. Accuracy was determined by the comparison with the
214 reference method for protein content determination, the Kjeldahl method, on the 5 conditions of
215 extractions previously described. The precision was described by the repeatability, or intraday
216 variation, which is calculated as the variation observed when the same sample is analyzed three
217 times the same day, for 3 concentration levels (20, 12.5 and 5 g.L⁻¹). The intermediate precision, or
218 inter-day variation was determined as the variation observed for 3 concentration levels (20, 12.5
219 and 5 g.L⁻¹) measured on three different days. The detection limit and the quantitation limit were
220 calculated by the comparison of the signal and of the noise of the analysis. The detection limit was
221 determined as the minimal concentration that produced a signal 3 times higher than the noise.
222 The quantitation limit was the minimal concentration with a signal 10 times higher than the noise.

223 3. Results and discussion

224 3.1. Separation of proteins by SE-HPLC

225 The aim of the method was to quantify the two main rapeseed proteins (albumins and globulins)
226 by SE-HPLC. This required to choose a column and an elution condition allowing a separation of
227 these two proteins. Globulins and albumins molar weight is around 300 kDa and 14 kDa
228 respectively. As a consequence, Biosep-SEC-s2000 column was selected because its separation
229 range was given between 1 and 300 kDa. The eluent was a water/acetonitrile mixture (55/45 v/v)
230 containing TFA (0.1% v/v) to avoid protein/protein association or aggregation that would yield
231 multiple peaks for a single protein.

232 Fig. 1 A shows the chromatogram of the isolate at 214 nm. Two main peaks were observed at
233 respective retention times of 9 and 11 minutes. According to the column calibration (data not
234 shown), these retention times corresponded to molar weights around 50 kDa and 10 kDa
235 respectively. Rapeseed globulins (MW = 300 kDa) are composed of 6 subunits of 50 kDa linked
236 together by electrostatic interactions (Schwenke, Raab , Plietz , & Damaschun, 1983) . Albumins
237 (MW = 14 kDa) are composed of 4 and 9 kDa subunits linked by disulfide bridges. Hence, the first
238 peak observed would correspond to globulin subunits dissociated by the elution conditions.
239 Indeed, at the pH of the mobile phase (around 2.5) globulins subunits are positively charged
240 because globulins isoelectric point was reported around ~~7 (Krause & Schwenke, 2001)~~ 5 (Cheung,
241 Wanasundara, & Nickerson, 2014). This probably results in a subunits dissociation and explains
242 that globulins were eluted in a 50 kDa peak. The second peak at around 10 kDa would correspond
243 to albumins. The elution conditions did not contain any reducing agents, so albumins subunits
244 should remain bonded together. The apparent molar weight given by the calibration was slightly
245 below 13 kDa, probably because of the compactness of albumins due to its reported two intra
246 molecular disulfide bonds (Perera, McIntosh, & Wanasundara, 2016).

247 To check that out, each peak was fractionated and analyzed by SDS-PAGE in reducing conditions
248 (with β mercaptoethanol). As shown in Fig. 1 B. Fractions 2 to 5 (between 8 and 10.5 minutes of
249 retention time) were composed of polypeptides with molecular weights around 30 and 20 kDa.
250 This corresponds to the globulin α and β -chains respectively. These two chains are known to be
251 bound by disulfide bridges. As a consequence, they were not dissociated by the elution conditions
252 and are well eluted under a 50 kDa globulin subunit. From fraction 5 to 10, two bands are visible
253 corresponding to low molecular weight proteins and are consistent with the two subunits of
254 albumins of approximately 4 and 9 kDa (that remained associated under elution condition). This
255 conformed with the alleged composition of peaks on the chromatogram. The slight peak
256 overlapping (5% of the total peak area) is composed of a mixture of albumins and globulins.

257 Previous studies used SE-HPLC for the analysis of proteins. Notably, it was reported that SE-HPLC
258 could be used to follow-up a process of enzymatic hydrolysis of milk proteins by the
259 transglutaminase. However, only a comparison of the area under the peaks was carried out and no
260 quantification was done (Faergemand & Qvist, 1997). More specific work was carried out on
261 protein from plants: a study with a Biosep-SEC-s4000 column showed the separation of gliadins
262 and albumins/globulins from wheat after 22 minutes of elution versus 15 minutes in the proposed
263 method. However, no quantification of the protein content was carried out (Bangur, Batey,
264 McKenzie, & MacRitchie, 1997). In 2005, it was shown the separation of wheat proteins between
265 10 and 22 minutes of elution. This method is the closest to the condition used in the present
266 article with a Biosep-SEC-s4000 column and a mobile phase composed of 50 % of acetonitrile, 50
267 % water and 0.05 % TFA. However, it shown an elution of proteins between 10 and 22 minutes
268 with a poor resolution even though two peaks were visible (Singh, 2005) whereas the present SE-
269 HPLC method elutes proteins between 8 and 15 minutes with a good resolution.

270 3.2. Method validation with protein isolates

271 The reference assay for food plant protein quantification is the Kjeldahl method. So, the proposed
272 SE-HPLC method was validated by comparison with this method. The protein quantification by
273 Kjeldahl requires the use of a nitrogen-to-protein factor (Ka), since it just quantifies the nitrogen
274 content. The most common Ka used for vegetal proteins is 6.25 (Mariotti, Tomé , & Patureau
275 Mirand, 2008). However, the nitrogen content in proteins depends upon their amino acid
276 sequence. It is possible to calculate a Ka by formula (7) (Mossé , Huet , & Baudet, 1985):

$$277 \quad Ka = \frac{\sum E_i}{\sum D_i} \quad (7)$$

278 In this equation, i corresponds to each anhydrous amino acid, E_i is its molecular weight and D_i its
279 nitrogen content. For rapeseed, few studies proposed values for Ka but one estimated it as an
280 average 5.53 (Tkachuk, 1969). The calculation by Mariotti gave an average value of 5.35 (Mariotti,
281 Tomé , & Patureau Mirand, 2008). Yet, these values are likely to change with the proportion of
282 globulins and albumins. As a consequence, it was chosen to validate the method with globulins
283 and albumins isolates using Ka values calculated from their amino acids sequences.

284 Since no standards of globulins and albumins are commercially available, proteins isolates were
285 produced according to (US Patent No. 8,541,046 B2, 2013). Fig. 2 shows the elution
286 chromatograms at 214 nm of the globulin and albumin isolates prepared. For each isolate, a single
287 peak is observed corresponding to the elution duration observed above. SDS-PAGE analysis
288 confirmed the composition of each isolate. For globulins, a slight contamination by albumins was
289 observed and estimated as 4 % on the SE-HPLC chromatogram. For albumins, the two main bands
290 characteristics of their two subunits were visible by SDS-PAGE with no apparent contamination by
291 globulins. As a consequence, these isolates were considered suitable to carry out the validation of
292 the proposed method.

293 The validation methodology used is shown on Fig. 3. **Isolate** solutions of globulins and albumins
294 ranging from 1 to 20 g.L⁻¹ were prepared and analyzed by SE-HPLC. On SE-HPLC chromatograms at
295 214 nm, the absorbance of albumins and globulins peaks were converted into concentrations
296 using the Beer-Lambert law. The obtained peak **was** integrated to give an amount of proteins in
297 the sample. To do so, the extinction coefficients of albumins and globulins were calculated with
298 amino acids sequences, as described by Kuipers and Gruppen (2007) on the basis of the UniProt
299 database (P80208 for albumins and Q7XB53 for globulins). **For globulins, this protein sequence**
300 **corresponded to a molecular weight of 55687 Da, a theoretical mass extinction coefficient ϵ of**
301 **17.22 and a theoretical nitrogen-to-protein conversion factor, K_a , of 5.46. For albumins, it was**
302 **14035 Da, the theoretical mass ϵ was 16.44 and the theoretical K_a was 5.24.**

303 The **isolate** solutions were also analyzed by Kjeldahl method to get the amount of nitrogen. **The**
304 **nitrogen content and the protein concentrations determined by SE-HPLC were plotted against the**
305 **isolate concentrations.** From this plot, an experimental nitrogen-to-protein conversion factor (K_a)
306 **was** determined as in equation 8.

307
$$K_a = \frac{\text{Protein content in the sample (SE-HPLC)}}{\text{Nitrogen content (Kjeldahl)}} \quad (8)$$

308 Then the obtained experimental K_a values **were** compared to theoretical values calculated from
309 the amino acids sequences.

310 Fig. 3 shows the plots of the protein content by SE-HPLC and the nitrogen content by Kjeldahl as
311 functions of the isolate concentration in the solutions for each protein. For both methods, a good
312 linearity is observed with values of R^2 superior to 0.99. The wide range of linearity, between 1 and
313 20 g.L⁻¹, is particularly convenient as it covers the concentrations of proteins usually found in
314 aqueous extracts. The values of experimental K_a for globulins and albumins deduced from this
315 graph were 5.13 and 4.94 respectively, Table 1.

316 This made relative differences of 6 and 5.7 % from the theoretical values (calculated from protein
317 sequences). This slight discrepancy can be explained by (i) the presence of several isoforms of
318 each protein in a same cultivar of a species leading to an approximation in the values of ϵ and K_a
319 (ii) an approximation in the calculation of the theoretical ϵ as the folding of the protein might
320 change UV absorption; (iii) a contribution to the absorption by remaining polyphenols in the
321 isolates; or (iv) a flawed optical path in the HPLC system. As a consequence, these results show
322 that the use of the SE-HPLC would give very similar results to the reference method, Kjeldahl.

323 **3.3. Application of the SE HPLC method for total proteins quantification in** 324 **rapeseed meal extracts**

325 The main interest is to be able to quantify rapeseed proteins in aqueous extracts from meal
326 solid/liquid extraction. The main parameters that may affect the extraction of one or both
327 proteins are the pH and the ionic strength. As a consequence, aqueous extracts were prepared in
328 several conditions of pH and ionic strength: pH 2 0 M, pH 5 0 M, pH 7 0 M, pH 7 0.1 M and pH 9
329 0.3 M (Table 1). These conditions were chosen in order to get various protein concentrations and
330 globulins/albumins compositions. The extracts were analyzed by SE-HPLC and Kjeldahl. Kjeldahl
331 analysis required an additional step of precipitation with TCA in order to determine the true
332 protein content in samples. Since K_a values of globulins and albumins are very close (respectively
333 5.46 and 5.24), a K_a value of 5.35 was chosen whatever the globulin / albumin proportion.

334 Fig. 4 represents the stacking of chromatograms at 214 nm for three extraction conditions: pH 2 0
335 M NaCl, pH 7 0 M NaCl and pH 9 0.3 M NaCl. On the right side is a zoom of the protein peaks. As
336 expected, it shows that the composition of the extract depends very much on the extraction
337 condition. For example, the first peak (of globulins) is **bigger** at pH 7 and 9 than at pH 2.

338 Other peaks **were** visible after 15 minutes. Because the separation **was** based on size-exclusion,
339 these peaks corresponded to low molecular weight molecules. **Since phenolic compounds are**

340 soluble in water, they are co-extracted with proteins. Moreover, common chromatographic
341 methods to detect and quantify phenolics usually use a UV detection at 325 nm. In the present
342 study, the chromatograms at 325 nm (data not shown) show the presence of several signals at
343 these retention times. They are very likely to correspond to free phenolic compounds.
344 Nevertheless, the presence of these peaks after 15 minutes, did not impact the quantification of
345 rapeseed proteins. In any case, globulin and albumin signals were not biased with other solutes
346 absorbing at 214 nm. Hence, the SE-HPLC method was suitable for proteins quantifications from
347 liquid complex extracts.

348 The results of Kjeldahl and SE-HPLC quantifications are featured in Table 1. A statistical
349 investigation was carried out to compare both sets of data. For all sets of data, the Student T-test
350 p-value was higher than 0.05, resulting in the equality of means. It is to note that the p-value for
351 the T-test is very low, with 0.046, regarding the pH 5 condition: there is a small probability of H₀
352 being false for this extract only. For all the other conditions, the statistical tests indicate an
353 equivalency between both methods to determine the soluble protein content in an aqueous
354 extract. Nevertheless, the results obtained with both methods show very close values. As a
355 consequence, the proposed method can be used as a substitute of the Kjeldahl method for
356 quantifying soluble proteins. The SE-HPLC presents many advantages: (i) it is very convenient
357 because it is fully automated; (ii), it is less dangerous for the user (the Kjeldahl method requires
358 the use of strong acids and bases); (iii) it generates less effluents; (iv) it is quick as one run lasts 30
359 minutes.

360 **3.4. Application of the SE HPLC method for albumins/globulins composition** 361 **determination**

362 The Kjeldahl method does not discriminate between globulins and albumins. That is not the case
363 of the proposed SE-HPLC method. To determine the concentration of one of the proteins in a

364 mixture, the only referenced method is SDS-PAGE densitometry. Hence, the SE-HPLC method was
365 compared to SDS-PAGE densitometry for the quantification of globulins and albumins in aqueous
366 extracts. Table 1 shows the values obtained by both methods for the **albumin** content in the
367 aqueous extracts. The average values between both methods present up to 19 % difference (for
368 the condition pH 7 and 0.1 M NaCl). As seen before, various compositions of globulins are found
369 between the extraction conditions. These differences can be quantified with both methods.

370 **For three of the conditions (pH 2, pH 7 0.1 M NaCl and pH 9 0.3 M NaCl), there was a significant**
371 **difference between the methods ($p < 0.05$). The other two conditions (pH 7 0 M and pH 5 0 M)**
372 **were found statistically equal. However, for the SDS-PAGE densitometry, very large standard**
373 **deviations were observed which makes the comparison more difficult.**

374 As a consequence, compared to SDS-PAGE densitometry, the SE-HPLC method would be easier to
375 carry out as no particular preparation is required to dose the proteins. Whereas, to prepare SDS
376 samples, it is necessary to dilute the sample quite accurately as the linear parts of the calibrations
377 are between 0.2 and 0.8 g.L⁻¹. Moreover, SDS-PAGE is a method which is longer to apply because:
378 gels must be prepared before the migration step; there are several steps of staining and
379 destaining; and finally, the computational densitometry treatment of the scan or picture of the
380 gel. **With a four-gel SDS-PAGE system, up to 36 samples can be loaded in a single run with one**
381 **marker per gel. The total time including all operations was estimated at 18 hours which would be**
382 **30 minutes per sample. Hence, depending on the number of samples to be analyzed, the average**
383 **time of analysis per sample would be between 30 minutes (for 36 samples) and 18 hours (for one**
384 **sample). And, contrary to the SE-HPLC analysis, many time-consuming operating steps are**
385 **required. Indeed, the SE-HPLC method requires only the filtration of the samples. Furthermore,**
386 **the narrow linearity range will imply to try different sample dilutions thus, even increasing the**
387 **overall duration. Moreover, the processing of the data with the SDS-PAGE densitometry also**

388 involves several steps that were found to induce a bias as shown by the large standard deviations.
389 The Kjeldahl method would require a total time of 4 hours to analyze 5 samples (total nitrogen
390 and non-protein nitrogen analyses), including one blank and one standard analysis. It corresponds
391 to 48 minutes per sample without determination of the globulin and albumin contents. Moreover,
392 it implies a full-time operator exposed to concentrated and dangerous substances. On the
393 contrary, the SE-HPLC method requires only 30 minutes per analysis once the method is set up
394 and after a 30 minutes' equilibration of the system. There are few steps requiring the intervention
395 of an operator, less dangerous substances and a computer-assisted processing of the data.

396 3.5. Stability study of extracts

397 Proteins are known to be sensitive to their medium: the presence of other molecules such as
398 polyphenols for example, that are interacting with proteins and can be oxidized under alkaline
399 conditions; pH and ionic strength are directly linked to protein precipitation (Purkayastha, et al.,
400 2014). All these factors may cause a variation in what is observed by SE-HPLC. Moreover, as shown
401 in Fig. 1, polyphenols are detected at 325 nm. These molecules are very sensitive to oxidation, and
402 hence, their presence in the aqueous medium after extraction, justifies the need to investigate the
403 stability of the samples.

404 Thus, analyses by SE-HPLC were carried out on extracts produced in a variety of conditions of pH
405 and ionic strength. Fig. 5 shows the results of the stability study under several conditions of
406 storage, room temperature, 4 °C and -20 °C, after 24 h or 48 h. The results were compared to the
407 initial analysis of each extract.

408 As expected, a larger variation was visible on extracts stored at room temperature, all the more
409 after 48 hours. However, pH seemed to affect the stability of certain extracts: the variation was
410 the largest for the samples produced at pH 5 or 7 with 0 or 0.1 M of NaCl. On the contrary, the set

411 of conditions with the most stable extract is pH 9 and 0.3 M NaCl which presented a variation of
412 only 1 % at most whatever the storage condition.

413 As a consequence, this stability study showed the importance of storage conditions particularly for
414 extracts produced at a neutral pH. These samples must be stored under the coldest conditions as
415 possible to preserve them and constrain alterations.

416 **3.6. Validation of the method according to the ICH validation guide**

417 The area under the peak (in $\mu\text{AU}\cdot\text{L}$) of both globulin and albumin isolates was plotted against the
418 concentration in the sample (data not shown) between 1 and 20 $\text{g}\cdot\text{L}^{-1}$ of isolate powder. Seven
419 points of concentration were considered with two to three replicates. The concentration in the
420 sample was determined according to the Kjeldahl method using a nitrogen-to-protein coefficient
421 of 5.35. Regarding globulins, it was found a correlation coefficient of 0.9927, the y-intercept was
422 set at 0 and the slope of the regression was 81.5. As for albumins, it was found a regression
423 coefficient of 0.9959 with a y-intercept of 0 and a slope of 75.0. Hence, for both proteins, very
424 good correlations were found. The data regarding the ICH validation is shown in supplementary
425 data, Table S.2.

426 Taking into account the purity of the isolates (with a Ka value of 5.35), the range of concentrations
427 studied was determined. For albumins, it was between 0.4 and 16.2 $\text{g}\cdot\text{L}^{-1}$ and for globulins, it was
428 0.6 to 12.0 $\text{g}\cdot\text{L}^{-1}$. As a consequence, the method was successfully developed to cover the usual
429 range of concentrations found in rapeseed protein extracts.

430 For albumins, the repeatability, or intra-day variation was found with a value of 2.8 %. The
431 intermediate precision, or inter-day variation, was 3.4 %. For globulins, repeatability was 0.3 %
432 and intermediate precision was 0.9 %. These values are below 5 % and in consequence, the
433 precision of the method was deemed validated regarding the ICH procedure.

434 For albumins, the detection limit was found at 0.010 g.L^{-1} and the quantitation limit was 0.033 g.L^{-1}
435 ¹. Similar values were found for globulins with, respectively, 0.008 g.L^{-1} and 0.026 g.L^{-1} .

436 3.7. Application of the method on other oleoproteaginous resources: 437 examples of linseed and sunflower

438 Sunflower and linseed are two other major oleoproteaginous produced all over the world. Hence,
439 the same issues regarding the need of a reliable and quick analysis of the proteins are emerging.
440 Indeed, sunflower proteins are also composed of two major types: globulins (11 S), also called
441 helianthinin, and albumins (2 S) with respective proportions in the meal of about 60 % and 30 %.
442 Their molecular weight is similar to the same proteins in rapeseed (Gonzalez-Pérez & Vereijken,
443 2007). Linseed, of flaxseed, also have their own 11-12 S globulins, also called linin, and 2 S
444 albumins or conlinin. However, these proteins have been the subject of fewer studies to this day
445 that is why limited data is available regarding this resource (Chung, Lei, & Li-Chan, 2005). As a
446 consequence, the approach used for rapeseed proteins is applied to both linseed and sunflower.

447 Supplementary figure, Fig.S. 1, shows the chromatograms of linseed and sunflower with their
448 associated SDS-PAGE.

449 Regarding linseed proteins, two main peaks were observed on the chromatograms. The first peak
450 has a retention time between 8 and 10.5 minutes: it is coherent with a high molecular weight
451 protein, globulins. The second peak, between 10.5 and 14 minutes, would correspond to low
452 molecular weight protein, albumins. These observations were completed by SDS-PAGE analysis
453 after a fractionation every 30 seconds between 7.5 and 15 minutes. In the first fraction, two bands
454 were visible: one thin around 30 kDa and the other one wider between 20 and 25 kDa. These
455 would be the result of the dissociation of disulfide bonds from subunits of globulins. In the second
456 fraction, several bands were present between 6.5 and 15 kDa, consistent with albumins.

457 In respect to sunflower, two peaks **were** also present on the chromatograms, the first between 8
458 and 10.5 minutes and the second between 10.5 and 15 minutes, probably corresponding to
459 respectively globulins and albumins. The SDS-PAGE **showed** that the first peak, fraction 1, **was**
460 composed of a high-molecular weight protein, dissociated in 3 bands corresponding to the 3 main
461 subunits of globulins: α and α' chains with 30 to 33 kDa and β chain with 21 kDa. Fraction 2
462 **showed** the presence of several bands between 16 to 18 kDa corresponding to sunflower
463 albumins.

464 As before, thanks to sequences it was possible to determine K_a values and extinction coefficients ϵ
465 for each protein (data not shown). The sequences for linseed were taken from (Nwachukwu &
466 Aluko, 2018) and the calculation gave an average K_a of 5.56. The sequences for sunflower were
467 found in the Uniprot database P19084 (chain) for albumins and P19084 for globulins and resulted
468 in an average K_a of 5.58.

469 Regarding linseed, the total proteins content **in the extract** determined by the SE-HPLC method
470 was 1.72 g.L^{-1} versus 1.64 g.L^{-1} with the Kjeldahl method, which represents a relative difference of
471 4.8 %. As for sunflower, the respective values observed by SE-HPLC and Kjeldahl were 5.70 g.L^{-1}
472 and 6.41 g.L^{-1} meaning a relative difference of 11 %.

473 As a result, these preliminary experiments prove the validity of the SE-HPLC method on these
474 resources as well. Because rapeseed (*Brassica napus*), sunflower (*Helianthus*) and linseed (*Linum*
475 *usitatissimum*) are different biologically and because the SE-HPLC method works on all three, it is
476 very likely that the proposed method will also work with other oleoproteaginous plant proteins.

477 **Conclusion**

478 This study proved the possibility to use SE-HPLC to characterize protein-rich aqueous extracts from
479 rapeseed: indeed, both the soluble protein content and the proportion of each major protein type

480 **was** determined by this method. It was shown to give statistically equivalent results compared to
481 the Kjeldahl method, for protein **isolates** but also for proteins in aqueous mediums of extraction.
482 The comparison with SDS-PAGE densitometry was also concluding for the analysis of **protein**
483 **isolates** even though very small concentrations **were required**. However, it was likely biased by the
484 presence of polyphenols in aqueous extracts resulting in interferences in SDS-PAGE gels.

485 Furthermore, the proposed method allows not only the quantification of the protein content in a
486 sample but also the **determination of the** proportion of each major proteins. Moreover, this
487 method presents several major advantages: it is quick, with a 30 minutes analysis per sample; no
488 sample preparation is required after filtration; the amount of effluent generated is moderate
489 compared to Kjeldahl; it is accurate and reliable. Finally, it was shown to be usable also on other
490 oleoproteaginous resources.

491 **Acknowledgements**

492 Authors wish to thank the company Olead, Pessac, France, for providing the meals used in this
493 study. Authors disclose no potential conflict of interest.

494 **References**

- 495 Aider, M., & Chockry, B. (2011). Canola proteins: composition, extraction, functional properties,
496 bioactivity, applications as a food ingredient and allergenicity - A practical and critical
497 review. *Trends in Food Science & Technology*, 22, 21-39.
- 498 Bangur, R., Batey, I., McKenzie, E., & MacRitchie, F. (1997). Dependence of Extensograph
499 Parameters on Wheat Protein Composition Measured by SE-HPLC. *Journal of Cereal*
500 *Science*, 25, 237–241.
- 501 Boukroufa, M., Sicaire, A.-G., Fine, F., Larré, C., Le Goff, A., Solé Jamault, V., . . . Chemat, F. (2017).
502 Green Sonoextraction of Protein from Oleaginous. *Molecules*, 22, 80, 1-14.
- 503 Cheung, L., Wanasundara, J., & Nickerson, M. T. (2014). The Effect of pH and NaCl Levels on the
504 Physicochemical and Emulsifying Properties of a Cruciferin Protein Isolate. *Food Biophysics*,
505 9, 105–113.
- 506 Chiou, S.-H., & Wu, S.-H. (1999). Evaluation of commonly used electrophoretic methods for the
507 analysis. *Analytica Chimica Acta* 383, 47-60.
- 508 Chung, M., Lei, B., & Li-Chan, E. (2005). Isolation and structural characterization of the major
509 protein fraction from NorMan flaxseed (*Linum usitatissimum* L.). *Food Chemistry* 90, 271–
510 279.
- 511 Crouch, M., & Sussex, I. (1981). Development and storage-protein synthesis in *Brassica napus* L.
512 embryos in vivo and in vitro. *Planta*, 153, 64-74.
- 513 Das Purkayastha, M., Gogoi Dipanka, J., Kalita, D., Chattopadhyay, P., Sewa Nakhuru, K., & Goyary,
514 D. (2014). Physicochemical and Functional Properties of Rapeseed Protein. *Journal of*
515 *Agricultural and Food Chemistry* 62, 7903–7914.

516 Faergemand, M., & Qvist, K. (1997). Transglutaminase: effect on rheological properties,
517 microstructure and permeability of set style acid skim milk gel. *Food Hydrocolloids, Vol. 11*
518 *no. 3*, 287-292.

519 FAOStats. (2018). *Food and Agriculture Organization, of the United Nations*. Retrieved April 3rd,
520 2018, from <http://www.fao.org/faostat>

521 Garcia-Esteva, R., Guerra-Hernandez, E., & Garcia-Villanova, B. (1999). Phytic acid content in
522 milled cereal products and breads. *Food Research International 32* , 217-221.

523 Gonzalez-Pérez, S., & Vereijken, J. (2007). Sunflower proteins: overview of their physicochemical,
524 structural and functional properties. *Journal of the Science of Food and Agriculture 87*,
525 2173–2191.

526 Hong, P., Koza, S., & Bouvier, E. (2012). A review size-exclusion chromatography for the analysis of
527 protein biotherapeutics and their aggregates. *Journal of Liquid Chromatography & Related*
528 *Technologies 35*, 2923-2950.

529 Hudson B.J.F. (2000). *New and Developing Sources of Food Proteins*. Springer US.

530 Krause, J.-P., & Schwenke, K. (2001). Behaviour of a protein isolate from rapeseed (*Brassica napus*)
531 and its main protein components — globulin and albumin — at air/solution and solid
532 interfaces, and in emulsions. *Colloids and Surfaces B: Biointerfaces 21* , 29-36.

533 Kuipers, B., & Gruppen, H. (2007). Prediction of Molar Extinction Coefficients of Proteins and
534 Peptides Using UV Absorption of the Constituent Amino Acids at 214 nm To Enable
535 Quantitative Reverse Phase High-Performance Liquid Chromatography-Mass Spectrometry
536 Analysis. *Journal of Agricultural and Food Chemistry*, 5445-5451.

537 Mariotti, F., Tomé , D., & Patureau Mirand, P. (2008). Converting Nitrogen into Protein—Beyond
538 6.25. *Critical Reviews in Food Science and Nutrition*, 177-184.

539 Mossé , J., Huet , J., & Baudet, J. (1985). The Amino Acid Composition of Wheat Grain as a Function
540 of Nitrogen Content. *Journal of Cereal Science* 3, 115-130.

541 Nwachukwu, I., & Aluko, R. (2018). Physicochemical and emulsification properties of flaxseed
542 (*Linum usitatissimum*) albumin and globulin fractions. *Food Chemistry* 255, 216-225.

543 Perera, S., McIntosh, T., & Wanasundara, J. (2016). Structural Properties of Cruciferin and Napin of
544 *Brassica napus* (Canola) Show Distinct Responses to Changes in pH and Temperature.
545 *Plants*, 5, 36, 1-24.

546 Purkayastha, M., Gogoi, J., Kalita, D., Chattopadhyay, P., Nakhuru, K., Goyary, D., & Mahanta, C.
547 (2014). Physicochemical and Functional Properties of Rapeseed Protein Isolate: Influence
548 of Antinutrient Removal with Acidified Organic Solvents from Rapeseed Meal. *Journal of*
549 *Agricultural and Food Chemistry* 62, 7903–7914.

550 Rivera, D., Rommi, K., Fernandes, M., Lantto, R., & Tzanov, T. (2015). Biocompounds from
551 rapeseed oil industry co-stream as active ingredients for skin care applications. .
552 *International Journal of Cosmetic Science* 37, 496-505.

553 Sáez-Plaza, P., Michałowski, T., Navas, M. J., Asuero, A. G., & Wybraniec, S. (2013). An Overview of
554 the Kjeldahl Method of Nitrogen Determination. Part I. Early History,. *Critical Reviews in*
555 *Analytical Chemistry* 43, 178-223.

556 Schweizer, M., Green, B., Segall, K., & Willardsen, R. (2013). *US Patent No. 8,541,046 B2*.

557 Schwenke, K., Raab , B., Plietz , P., & Damaschun, G. (1983). The structure of the 12 S globulin from
558 rapeseed. *Nahrung*, 27, 165-175.

559 Singh, H. (2005). A study of changes in wheat protein during bread baking using SE-HPLC. *Food*
560 *Chemistry* 90 , 247–250.

561 Stepanchenko, N., Novikova, G., & Mosh, I. (2011). Protein Quantification. *Russian Journal of Plant*
562 *Physiology* Vol. 58 No. 4, 737-742.

563 Tkachuk, R. (1969). Nitrogen-to-Protein Conversion Factors for Cereals and Oilseed Meals. *Cereal*
564 *Chemistry*, 46, 419-423.

565 Validation of Analytical Procedures: Text and Methodology Q2(R1) . (2005). *International*
566 *Conference on Harmonisation of technical requirements for registration of pharmaceuticals*
567 *for human use* , (pp. 1-17).

568 World Health Organisation. (2007). *Protein and Amino Acid Requirements in Human Nutrition*.
569 WHO Technical Report Series 935.

570

571

572 **Figure captions**

573 Fig. 1: Total proteins isolate analysis, A. Chromatograms of the SE-HPLC method at 214 and 325
574 nm ; B. Fractionation of the main peaks observed in SE-HPLC and SDS-PAGE analysis of the
575 obtained fractions.

576 Fig. 2: Globulins and albumins isolates analysis by SE-HPLC at 214 nm and SDS-PAGE.

577 Fig. 3: Methodology for the validation of the SE-HPLC method. Light blue boxes represent
578 analytical steps and grey boxes show the calculated values. Below are the values obtained by both
579 methods represented as functions of the isolate concentration. The K_a is the ratio of both slopes.

580 Fig. 4: Stacked chromatograms of extracts at 214 nm and for three extraction conditions. The blue
581 line corresponds to pH 2 0 M NaCl, the orange to pH 7 0 M NaCl and the green to pH 9 0.3 M NaCl.
582 On the right side of the figure is a zoom of the proteins peaks.

583 Fig.5: Stability study of several rapeseed protein extracts under different storage conditions (room
584 temperature, 4 °C and -20 °C) after 24 h (A) or 48 h (B). Values on top of the bars represent the
585 absolute relative difference of area with the initial measure.

586 **Tables**587 **Table 1: Comparison of the SE-HPLC method with the Kjeldahl method and with the SDS-PAGE densitometry.**

True protein content according to extraction condition	SE-HPLC method (N=3)	Kjeldahl (N=3)	Statistical comparison
			P-value T-test (two tails)
pH 2.0 M NaCl	10.5 ± 1.16	11.8 ± 0.81	0.197
pH 5.0 M NaCl	10.7 ± 0.76	12.3 ± 0.57	0.046 *
pH 7.0 M NaCl	11.0 ± 0.64	10.7 ± 1.04	0.691
pH 7.0.1 M NaCl	16.8 ± 0.79	16.3 ± 0.99	0.464
pH 9.0.3 M NaCl	21.4 ± 2.30	20.1 ± 0.45	0.441
Proportion of albumins	SE-HPLC method (N=3)	SDS-PAGE densitometry (N=3)	Statistical comparison
			P-value T-test (bilateral)
pH 2.0 M NaCl	90.7 ± 0.45	95.8 ± 1.06	0.002 *
pH 5.0 M NaCl	54.5 ± 2.27	55.2 ± 2.29	0.712
pH 7.0 M NaCl	30.7 ± 1.44	37.9 ± 4.33	0.052
pH 7.0.1 M NaCl	50.2 ± 1.20	57.0 ± 1.99	0.007 *
pH 9.0.3 M NaCl	50.3 ± 0.44	61.6 ± 3.02	0.023 *

588 *The highest part of the Table contains the data used for the characterization of the homemade*
589 *protein isolates of globulins and albumins from rapeseed meal. The second part consists of the*
590 *data used to compared the SE-HPLC method with references, Kjeldahl and SDS-PAGE densitometry.*
591 *N corresponds to the number of repetition of the experiments. Experimental values are*
592 *reprented as mean ± the standard deviation. In the statistical analysis, values followed by * are*
593 *below the signification threshold of 5 %.*

594

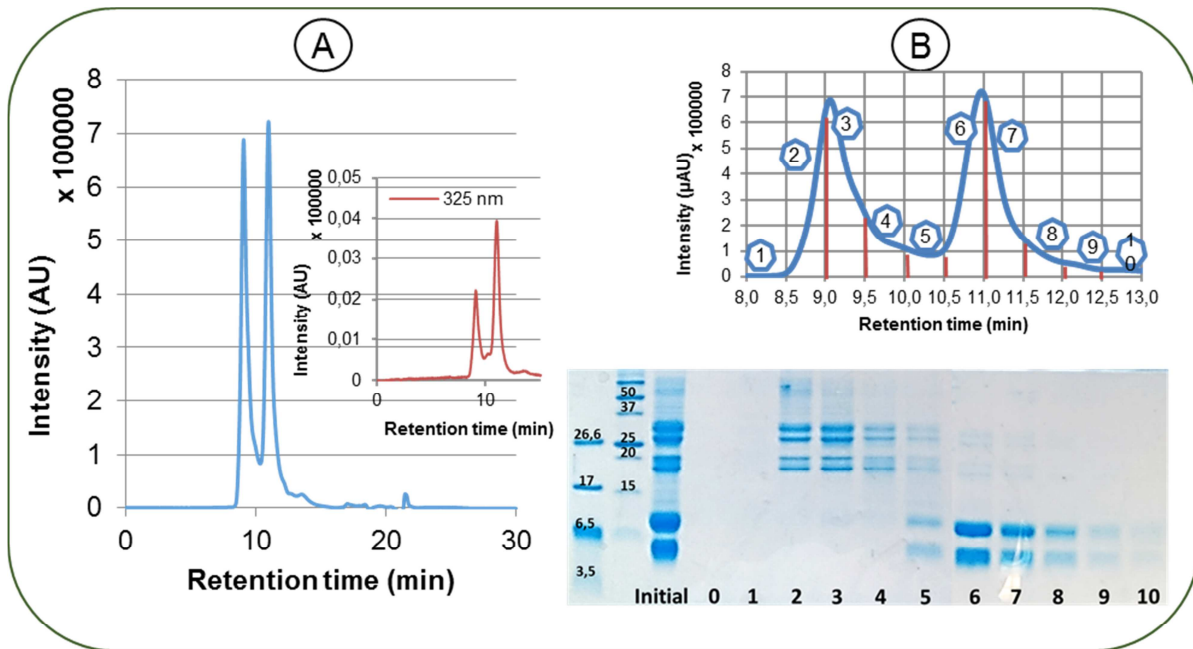


Fig. 1: Total proteins isolate analysis, A. Chromatograms of the SE-HPLC method at 214 and 325 nm ; B. Fractionation of the main peaks observed in Size-Exclusion HPLC and SDS-PAGE analysis of the obtained fractions.

596

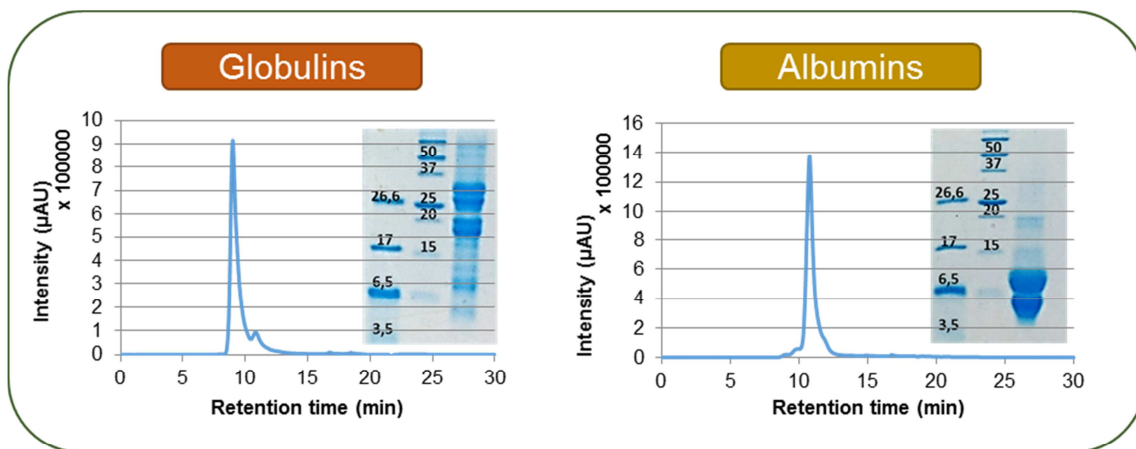


Fig. 2: Globulins and albumins isolates analysis by Size-Exclusion at 214 nm and SDS-PAGE.

597

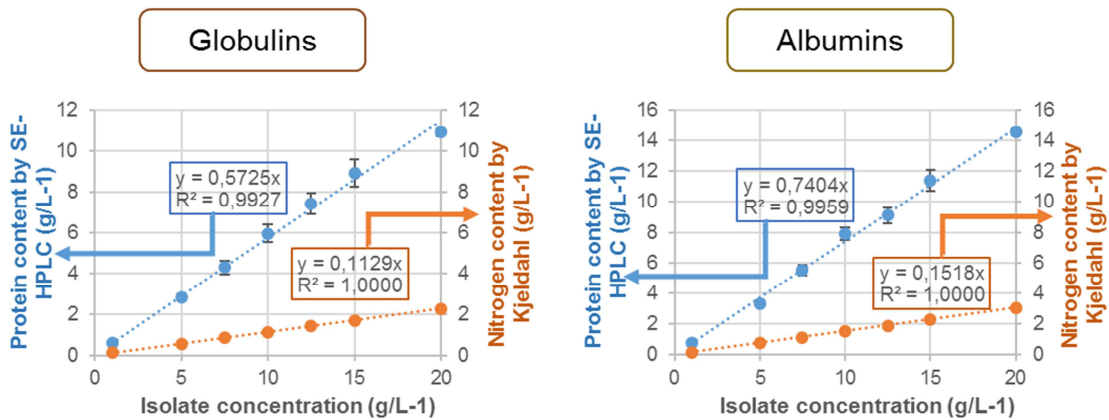
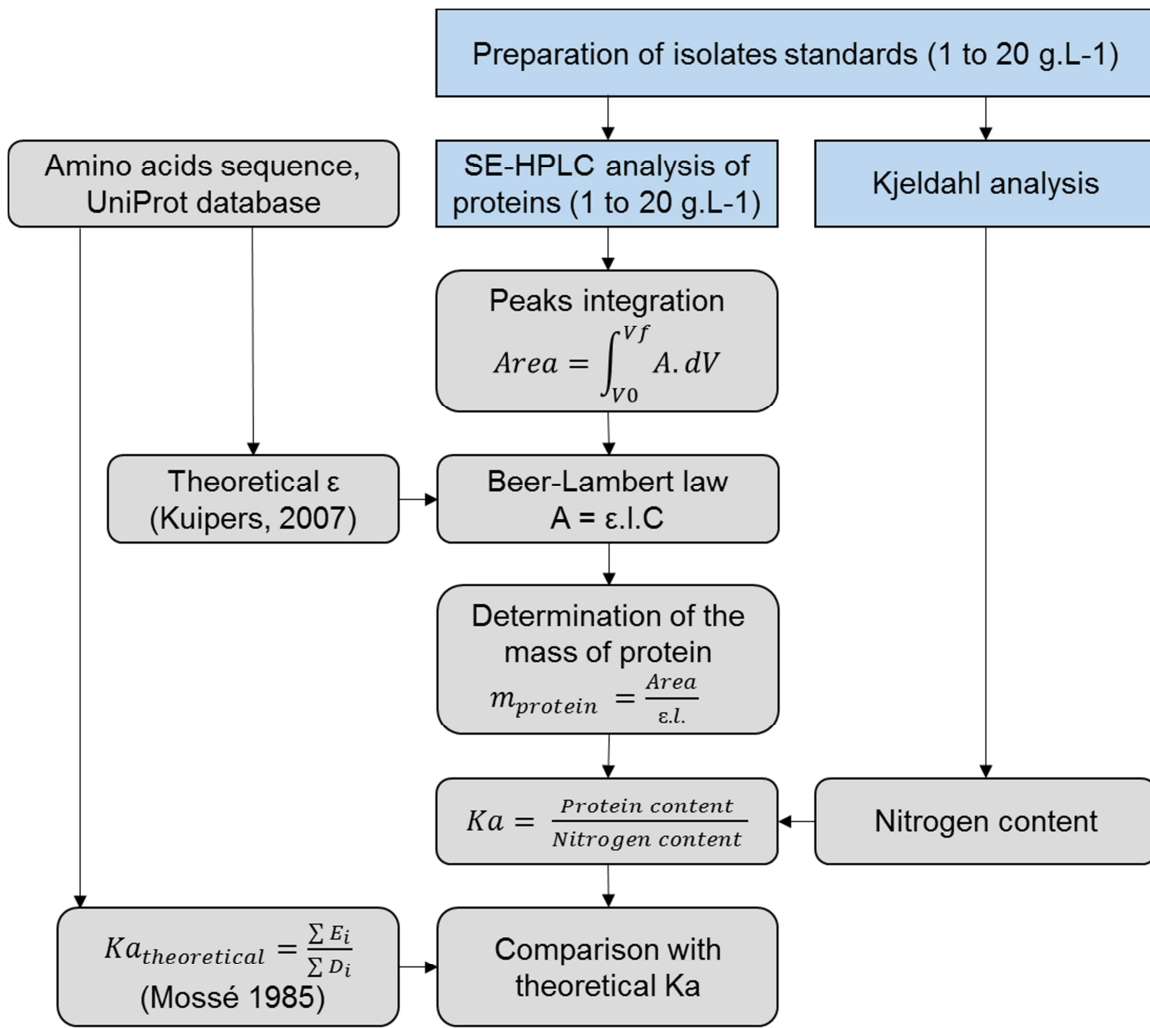


Fig. 3: Methodology for the validation of the SE-HPLC method. Light blue boxes represent analytical steps and grey boxes show the calculated values. Below are the values obtained by both methods represented as functions of the isolate concentration. The Ka is the ratio of both slopes.

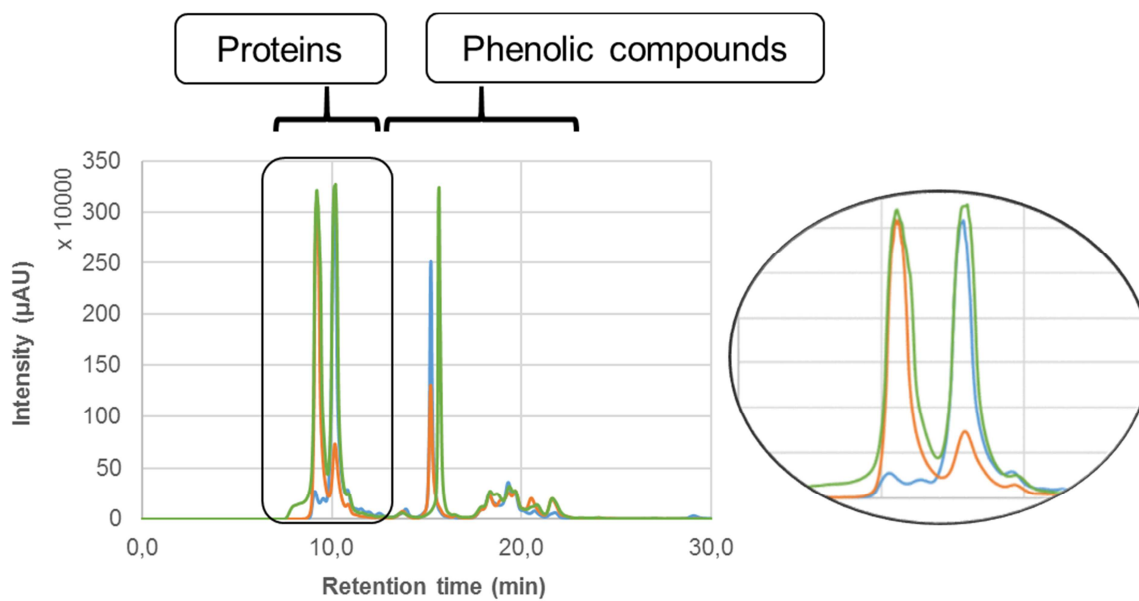


Fig. 4: Stacked chromatograms of extracts at 214 nm and for three extraction conditions. The blue line corresponds to pH 2 0 M NaCl, the orange to pH 7 0 M NaCl and the green to pH 9 0.3 M NaCl. On the right side of the figure is a zoom of the proteins peaks.

599

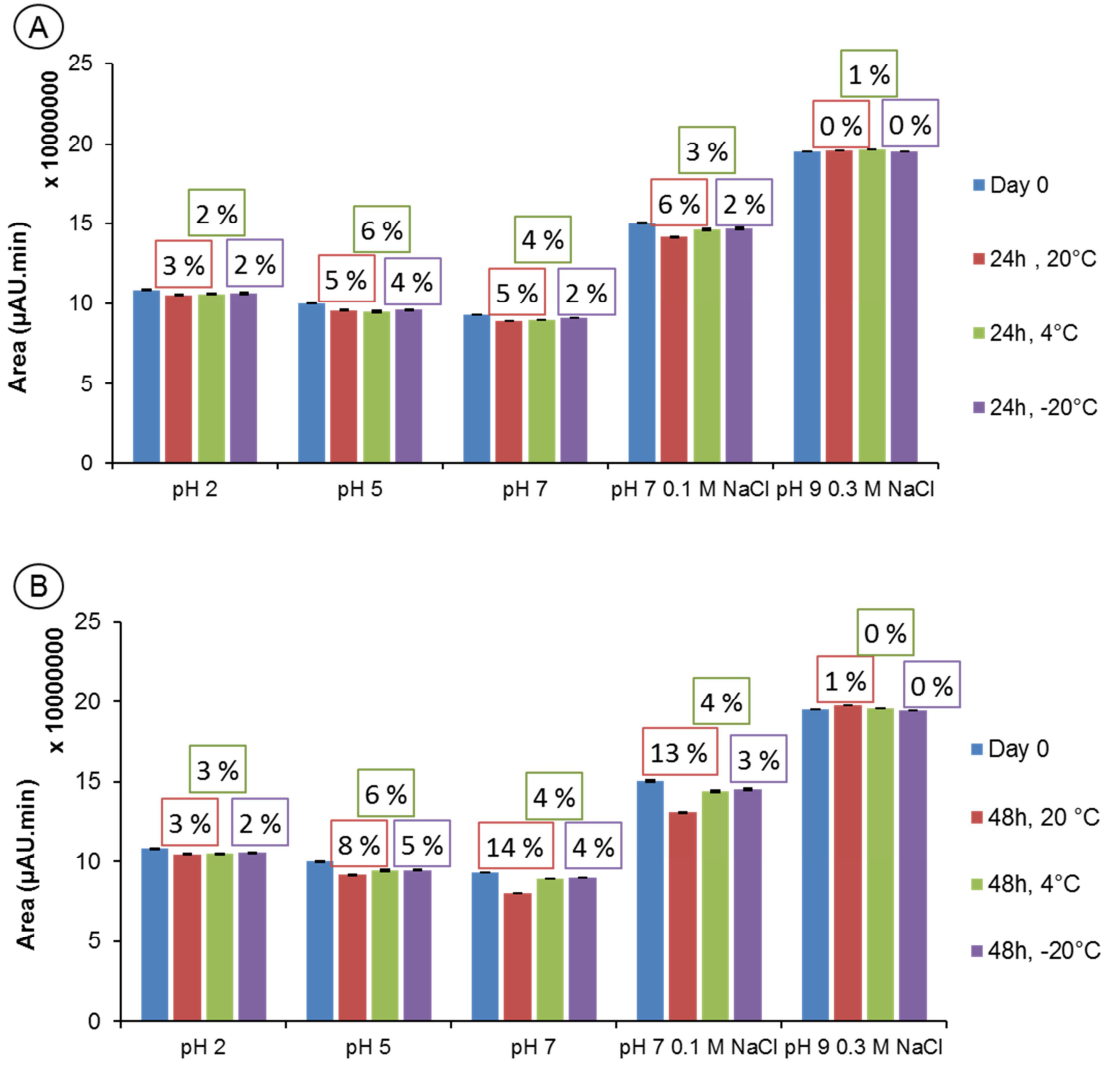


Fig.5: Stability study of several rapeseed protein extracts under different storage conditions (room temperature, 4 °C and -20 °C) after 24 h (A) or 48 h (B). Values on top of the bars represent the absolute relative difference of area with the initial measure.

600

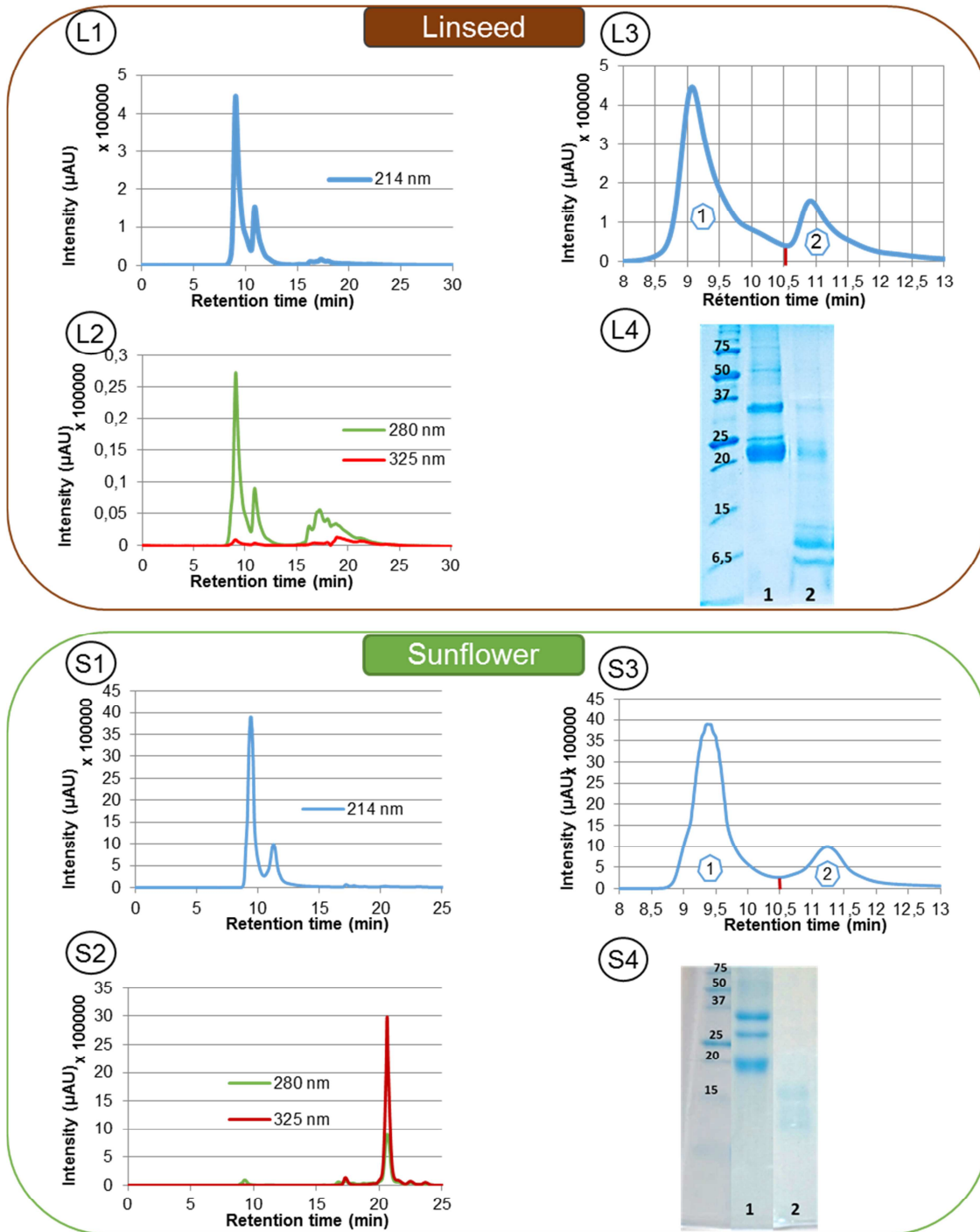
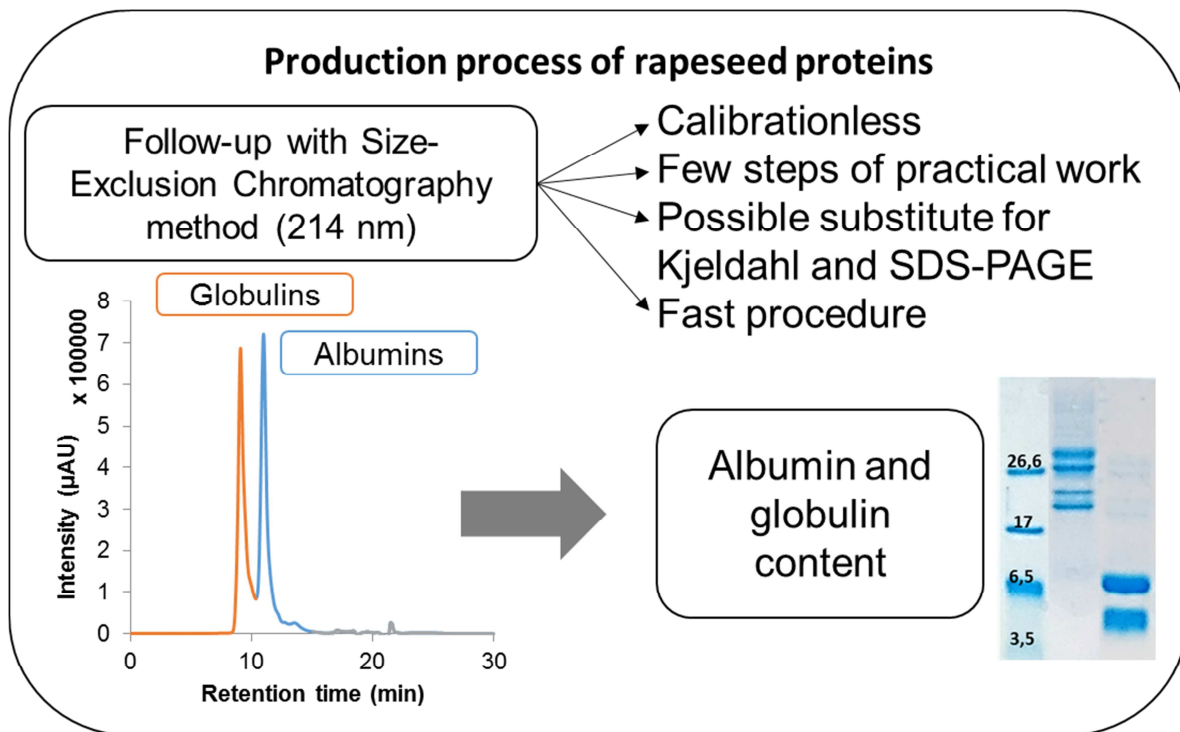


Fig. S. 1: L1 and S1 are the chromatograms at 214 nm ; L2 and S2 are the stacked chromatograms at 280 nm and 325 nm ; L3 and S3 are zooms from 214 nm chromatograms and show the different fractions shown on SDS-PAGE gels in reducing conditions, L4 and S4.

603 **Table S.2: Validation of the method according to the International Conference on Harmonisation (ICH) guideline.**

	Globulins	Albumins
Regression coefficient	0.9927	0.9959
y-intercept	0	0
Slope	81.5	75.0
Concentration range	0.6 to 12.0 g/L ⁻¹	0.4 to 16.2 g/L ⁻¹
Repeatability (intra-day variation)	0.3 %	2.8 %
Intermediate precision (inter-day variation)	0.9 %	3.4 %
Detection limit	0.008 g/L ⁻¹	0.010 g/L ⁻¹
Quantitation limit	0.026 g/L ⁻¹	0.033 g/L ⁻¹

604 **Graphical abstract**



605