

**Empagliflozin for Patients with Presumed Resistant Hypertension: a Post Hoc Analysis of the  
EMPA-REG OUTCOME Trial**

João Pedro Ferreira, MD, PhD; David Fitchett, MD; Anne Pernille Ofstad, MD, PhD; Bettina Johanna  
Kraus, MD; Christoph Wanner, MD; Isabella Zwiener, PhD; Bernard Zinman, MD; Sabine Lauer,  
PhD, MSc; Jyothis T George, MBBS, PhD; Patrick Rossignol, MD, PhD; Faiez Zannad, MD, PhD

Université de Lorraine, Centre d'Investigations Cliniques Plurithématique Inserm 1433, Nancy,  
France, CHRU de Nancy, Inserm U1116, Nancy, France, FCRIN INI-CRCT, Nancy, France. (J.P.F.,  
P.R., F.Z.)

Division of Cardiology, St Michael's Hospital, University of Toronto, Ontario, Canada. (D.F.)

Boehringer Ingelheim Norway KS, Asker, Norway. (A.P.O.)

Comprehensive Heart Failure Center, University of Würzburg, Würzburg, Germany. (B.J.K.)

Department of Internal Medicine I, University Hospital Würzburg, Würzburg, Germany. (B.J.K.,  
C.W.)

Boehringer Ingelheim Pharma GmbH & Co. KG, Ingelheim, Germany. (I.Z., S.L.)

Lunenfeld-Tanenbaum Research Institute, Mount Sinai Hospital, University of Toronto, Toronto,  
Canada. (B.Z.)

Boehringer Ingelheim International GmbH, Ingelheim, Germany. (J.T.G.)

Short title: Empagliflozin for resistant hypertension

Corresponding author:

Dr João Pedro Ferreira

Centre d'Investigation Clinique 1433 module Plurithématique, CHRU Nancy - Hopitaux de Brabois  
Institut Lorrain du Coeur et des Vaisseaux Louis Mathieu, 4 rue du Morvan, 54500 Vandoeuvre les  
Nancy,

Tel : +33 (0) 3 83 15 73 15

Fax : +33 (0) 3 83 15 73 24

Mail to: [j.ferreira@chru-nancy.fr](mailto:j.ferreira@chru-nancy.fr)

Text word count: 2605; Abstract word count: 247; Total word count: 5413.

Number of references: 29; Number of tables: 3; Number of figures 3.

## Abstract

*Background:* Type 2 diabetes (T2D) and resistant hypertension (rHT) often coexist, greatly increasing risk of target-organ damage and death. We explored the effects of empagliflozin in patients with and without presumed resistant hypertension (prHT) in a post hoc analysis of EMPA-REG OUTCOME (NCT01131676).

*Methods:* Overall, 7020 patients received empagliflozin 10mg, 25mg, or placebo with median follow-up of 3.1 years. We defined baseline prHT as  $\geq 3$  classes of antihypertensive drugs including a diuretic and uncontrolled BP (SBP $\geq 140$  and/or diastolic BP [DBP] $\geq 90$  mmHg), or  $\geq 4$  classes of antihypertensive, including a diuretic, and controlled BP. We explored the effect of empagliflozin on CV death, heart failure hospitalization (HHF), 3-point major adverse cardiac events (3P-MACE), all-cause death, and incident/worsening nephropathy by Cox regression and BP over time by a mixed-repeated-measures-model analysis.

*Results:* 1579 (22.5%) patients had prHT. The mean difference in change in SBP from baseline to week 12 versus placebo was -4.5 (95% CI, -5.9 to -3.1) mmHg ( $p < 0.001$ ) in prHT and -3.7 (-4.5, -2.9) mmHg ( $p < 0.001$ ) in patients without prHT. SBP was more frequently controlled ( $< 130/80$  mmHg) with empagliflozin than with placebo. Patients with prHT had 1.5 to 2-fold greater risk of HHF, incident/worsening nephropathy and CV death compared to those without prHT. Empagliflozin improved all outcomes in patients with and without prHT (interaction  $P > 0.1$  for all outcomes).

*Conclusions:* Empagliflozin induced a clinically relevant reduction in SBP and consistently improved all outcomes regardless of prHT status. Due to these dual effects, empagliflozin should be considered for patients with hypertension and T2D.

*Key-words:* resistant hypertension; type 2 diabetes; empagliflozin.

## INTRODUCTION

Cardiovascular (CV) risk in patients with diabetes is graded and continuous across the entire range of blood pressure (BP). International recommendations support the start of antihypertensive treatment in persons with diabetes who have high blood pressure with a treatment goal of reducing systolic blood pressure (SBP) to  $<130$  mmHg.<sup>1-3</sup> A subset (5–30%) of patients with high BP may have resistant hypertension (rHT) defined (by European guidelines) as a seated office SBP  $\geq 140$  mmHg or diastolic blood pressure (DBP)  $\geq 90$  mmHg on maximally tolerated doses of  $\geq 3$  antihypertensive agents (including a diuretic) or when BP control is achieved but requires  $\geq 4$  medications.<sup>3</sup> Diabetes increases the risk of developing rHT.<sup>4</sup> Furthermore, the concomitant existence of diabetes and rHT is associated with a major increase in the risk of target-organ damage (including heart failure [HF], atrial fibrillation, myocardial infarction [MI], stroke, chronic kidney disease [CKD]) and ultimately death.<sup>3-8</sup>

Spironolactone is recommended as 4th line therapy for rHT; notwithstanding, a large proportion of patients with rHT remain uncontrolled and/or may have a formal contraindication or intolerance (e.g., advanced CKD, hyperkalemia) to spironolactone, therefore additional strategies are urgently needed.<sup>5,9</sup>

Empagliflozin is a sodium-glucose cotransporter-2 (SGLT2) inhibitor, which, compared with placebo, reduced time to first HF hospitalization, incident or worsening nephropathy, and death (CV and all-cause) in patients with type 2 diabetes mellitus (T2D) and CV disease in the EMPA-REG OUTCOME trial.<sup>10</sup> SGLT2-inhibitors also reduce blood pressure,<sup>11</sup> and in the EMPA-REG BP trial empagliflozin (compared with placebo) reduced mean SBP by 3–5 mmHg and DBP by 1–2 mmHg at week 12.<sup>12,13</sup> However, the effect of empagliflozin in patients with rHT is yet to be studied.

The aim of the present study is to assess the BP-lowering effects of empagliflozin in patients with and without rHT (rHT versus no-rHT), and whether the treatment effect of empagliflozin on CV, renal and HF outcomes are consistent in those with and without rHT; as rHT was a presumptive post-hoc diagnosis in this population, we refer to it as presumed resistant hypertension (prHT) throughout the manuscript (please see also the methods section).

## METHODS

The methods of the EMPA-REG OUTCOME trial have been previously described.<sup>10</sup> In short, 7020 patients with T2D and established CV disease were assigned to receive either 10 mg or 25 mg of empagliflozin or placebo once daily. The primary composite outcome was death from CV causes, nonfatal MI, or nonfatal stroke (3P-MACE), as analyzed in the pooled empagliflozin group versus the placebo group. Other outcomes were CV death, hospitalization for HF, the composite of CV death or hospitalization for HF, incident/worsening nephropathy, and all-cause death. These outcomes were also assessed in the present analysis. The median follow-up time was 3.1 years.

Because of the sensitive nature of the data collected for this study, requests to access the dataset from qualified researchers trained in human subject confidentiality protocols may be sent to Boehringer Ingelheim & Eli Lilly and Company Diabetes Alliance.

#### **Definition of Resistant Hypertension and Blood Pressure Assessment**

In this post hoc analysis, we defined prHT at baseline as the use of  $\geq 3$  classes of antihypertensive drugs, including a diuretic, and uncontrolled BP (SBP  $\geq 140$  and/or DBP  $\geq 90$  mmHg), or use of  $\geq 4$  classes of antihypertensive drugs, including a diuretic, and SBP  $< 140$  and DBP  $< 90$  mmHg. “True” rHT definition requires a BP that remains above goal in spite of the concurrent use of 3 antihypertensive agents of different classes, with (ideally) one of the 3 agents being a diuretic, with all agents prescribed at maximally tolerated doses; and (ideally) also requires ambulatory confirmation of high BP.<sup>3</sup> Typically, a clinic BP of 140/90 mmHg corresponds to home BP values of 135/85 mmHg and to ambulatory blood pressure monitoring values defined as a daytime SBP/DBP of 135/85 mmHg, a night-time SBP/DBP of 120/70 mmHg, and a 24-hour SBP/DBP of 130/80 mmHg<sup>2</sup>. For this reason, we used the 140/90 mmHg cutoff in our rHT definition, as it may better reflect “true” rHT (i.e., be more specific). As our study is a post hoc analysis of an outcome trial, we cannot ascertain whether all of the patients herein included have ‘true’ rHT (despite using a cutoff of office BP  $> 140/90$  mmHg). In consequence, throughout the manuscript whenever rHT is referred to, it should be considered as prHT.

Blood pressure was measured in the seated position after at least 5 minutes of rest with a calibrated automatic sphygmomanometer and in the presence of the study physician and/or nurse at

each study site, taking the average of 3 consecutive measurements with a between-measurement interval of at least 1 minute.

## **Statistical Analysis**

Patients' baseline characteristics were derived in the prHT versus no-prHT groups, and continuous variables are presented as mean±standard deviation (SD), and categorical variables are presented as number (n) and proportion (%). Effects on blood pressure (SBP, DBP) were evaluated using a mixed effect model repeat measurement (MMRM) model, which included subject as a random effect, baseline glycated hemoglobin (HbA1c) and baseline of the endpoint (SBP or DBP) as linear covariates and their interaction with visit in addition to baseline estimated glomerular filtration rate (eGFR) category, geographic region, baseline body mass index (BMI) category. Treatment, resistant hypertension at baseline and visit were also entered as fixed effects as well as all 2- and 3-way interactions thereof. Additionally, the model included a fixed categorical effect for 'time of randomization' to account for each patient's theoretical ability to 'reach' certain weeks in this study arising from the study design. A similar MMRM model was applied for the evaluation of effects on weight and HbA1c. We furthermore explored the proportion of patients that achieved SBP <130 mmHg during the trial. We then evaluated the treatment effects (pooled empagliflozin arms versus placebo) on time to first 3P-MACE, CV death, hospitalization for HF, the composite of CV death or HF hospitalization, incident/worsening nephropathy, and all-cause death, in those with and without prHT by Cox regression models. The Cox model included the interaction of presence of prHT at baseline by treatment to evaluate the treatment effect in patients with and without prHT at baseline separately. The model further included covariate terms for age, gender, BMI, HbA1c, eGFR, region, resistant hypertension at baseline, and treatment. All analyses are post hoc and not adjusted for multiplicity. All statistical analyses were performed using SAS Software, Version 9.4.

## **RESULTS**

### **Baseline Characteristics**

Overall, 1579 (22.5%) patients had prHT (as defined in the methods section); these patients had longer diabetes duration (>10 y: 63% versus 55%) and more concomitant diseases, including HF (17% versus 8%), retinopathy (27% versus 21%) and macroalbuminuria (15% versus 10%), as well as lower mean eGFR (68 mL/min/1.73 m<sup>2</sup> ± 21 (SD) versus 76 mL/min/1.73 m<sup>2</sup> ± 21 (SD)). The mean baseline SBP/DBP±SD was 142±18/78±11 mmHg in prHT versus 133±16/76±10 mmHg in no-prHT, and patients with prHT used more antihypertensive treatments, including mineralocorticoid receptor antagonists ([MRAs] Table 1). More patients with prHT added antihypertensive medications including beta blockers and angiotensin-converting enzyme inhibitors/angiotensin receptor blockers during the trial, compared to those with no-prHT. Fewer patients added concomitant medications in the empagliflozin versus placebo arms in both prHT and no-prHT groups. Addition of MRAs was balanced between treatments in patients with prHT (Table 2).

## **Blood Pressure Control**

Systolic and diastolic BP were consistently reduced by empagliflozin in patients with prHT or no-prHT. Overall, the treatment effect of empagliflozin on SBP was consistent in patients with and without prHT throughout the trial (Figure 1). The mean difference (95% CI) of SBP change from baseline to week 12 with empagliflozin versus placebo was -4.5 (-5.9 to -3.1) mmHg in prHT versus -3.7 (-4.5 to -2.9) mmHg in no-prHT; a difference that was sustained during the follow-up (Figure 1). These changes were generally comparable between empagliflozin doses (Supplemental Figure 1). The differences in change in DBP from baseline to week 12 for empagliflozin versus placebo were smaller as compared to SBP in patients with and without prHT: -1.7 (-2.5 to -0.9) mmHg in prHT versus -1.2 (1.7 to -0.8) mmHg in no-prHT; a difference that was also sustained during the follow-up (Supplemental Figure 2).

The proportion of patients with prHT that achieved SBP <130 mmHg was higher with empagliflozin (versus placebo) throughout the follow-up (e.g., 38% versus 26% at week 12; Figure 2, Supplemental Figure 3 and Supplemental Table 1. Similarly, more patients without prHT treated with empagliflozin achieved SBP <130 mmHg compared with placebo (Figure 2, Supplemental Table 1).



## **Outcome Events**

In both placebo- and empagliflozin-treated patients, patients with prHT were generally at increased risk for all outcomes compared to patients with no-prHT – with the only exception of all-cause mortality in the placebo group which only showed a weak trend in this respect (HR 1.13, 95% CI, 0.82–1.56) for prHT versus no prHT). For example, in placebo-treated patients, the hazard ratio for 3P-MACE was 1.31 (95% CI, 1.01–1.71) (Table 3).

## **Treatment Effects on Outcomes and HbA1c**

Empagliflozin (versus placebo) consistently reduced the risk for all outcomes regardless of baseline prHT status (*P* value for interaction >0.1 for all outcomes; Figure 3). HbA1c levels and weight were reduced by empagliflozin treatment in patients with and without prHT (Supplemental Figures 4 and 5).

## **Adverse Events**

For most AEs, incidence rates in patients with prHT were higher compared to patients with no-prHT irrespective of treatment (Supplemental Table 2). Empagliflozin-treated prHT patients experienced numerically fewer serious adverse events compared with placebo-treated prHT patients (45.7% versus 52.1%). Furthermore, rates of hyperkalemia were lower with empagliflozin than placebo, irrespective of prHT status, whereas incidence rates of genital infection were increased with empagliflozin in both subgroups.

## **DISCUSSION**

In this analysis, treatment with empagliflozin resulted in early reductions in SBP in patients with T2D with and without prHT (-4.5 mmHg compared with placebo in patients with prHT at week 12) with sustained BP reduction throughout the follow-up. A higher proportion of empagliflozin-treated patients achieved a SBP <130 mmHg compared with those receiving placebo. Independent of treatment arm, patients with prHT had higher incidence of major CV (including HF) events compared to those with no-prHT after multivariable adjustment for risk factors including age and eGFR . Treatment with empagliflozin reduced major CV events irrespective of the patients' prHT status.



Treatment with empagliflozin has consistently been shown to reduce BP in patients with T2D, thereby improving the BP control in this population.<sup>11-13</sup> Reductions in major CV events and death with empagliflozin are likely explained by a multitude of mechanisms, including osmotic diuresis following increased urinary glucose excretion, improved glycemic control, weight loss, reduced arterial stiffness, and, importantly, a reduction in plasma volume.<sup>14-16</sup> Although a mediation analysis identified changes in markers of plasma volume as the most important mediators of the reduction of CV death in empagliflozin treated patients and showed that SBP and DBP had only negligible mediating effects,<sup>16</sup> it is well established that BP control is important to improve outcomes in patients with T2D and CVD.

In the EMPA-REG OUTCOME trial, patients with prHT represented 22% of the study population, supporting the high prevalence of rHT in patients with diabetes also reported in population-based cohorts.<sup>17</sup> Patients with rHT have high CV risk, which poses additional difficulties in the BP control, where a low BP target (SBP <130 mmHg) is desirable.<sup>18</sup> The Action to Control Cardiovascular Risk in Diabetes blood pressure trial (ACCORD-BP)<sup>19</sup> tested the effect of a target SBP <120 mmHg on major adverse cardiac effects among high-risk persons with type 2 diabetes (n=4733). Although this trial did not show a reduction in the primary composite outcome of MI, stroke or CV death, a reduction in stroke rate, a prespecified secondary outcome, was observed.<sup>19</sup> Subsequent large meta-analyses strongly support intensive BP-lowering strategies over standard regimens for CV protection in persons with diabetes, with benefits seen even at SBP values <120 mmHg.<sup>20, 21</sup> The Systolic Blood Pressure Intervention Trial (SPRINT), also supports a target of <120 mmHg among patients at high risk for CV events but without diabetes<sup>22</sup>. In order to achieve an adequate BP control in rHT patients, multiple drugs and drug-combinations are often used. In rHT patients participating in the PATHWAY-2 trial<sup>23</sup>, spironolactone started at 25 mg daily, and up-titrated to 50 mg, reduced home SBP at 12 weeks by a mean of -8.7 (-9.7 to -7.7) mmHg, compared with placebo, and was more effective than alternative fourth-line drugs (bisoprolol or doxazosin) by a mean SBP margin of -4.3 (-5.1 to -3.4) mmHg. In the present study, treatment with empagliflozin resulted in a -4.5 (-5.9 to -3.1) mmHg greater reduction in SBP at week 12 compared with placebo in patients with prHT, suggesting that empagliflozin may have additional BP-lowering benefit on top of

standard of care<sup>24</sup>. The differences in trial design and populations preclude comparisons of BP effects between spironolactone and empagliflozin (e.g., PATHWAY-2 was a “cross-over” trial, enrolling only patients with resistant hypertension and where only 14% of the patients had T2D). Interestingly, in the Treatment of Preserved Cardiac Function Heart Failure with an Aldosterone Antagonist (TOPCAT) trial, that enrolled patients with heart failure and preserved ejection fraction, of which 32% had diabetes, spironolactone reduced SBP by -6.1 (-8.9 to -3.3) mmHg at 16 weeks in those with prHT.<sup>25</sup> Together these results suggest that there may exist a potential interest in associating these drugs (spironolactone and empagliflozin) for the treatment of rHT in patients with T2D. These drugs showed morbidity and mortality reductions across different populations, and patients treated with empagliflozin had lower rates of hyperkalemia during the follow-up, which may be of particular interest when used concomitantly with an MRA. Analogously, another emerging treatment option is potassium binding. For example, the AMBER study (patiromer versus placebo to enable spironolactone use in patients with resistant hypertension and chronic kidney disease) showed that patiromer enabled more patients to continue treatment with spironolactone with less hyperkalaemia<sup>26</sup> The findings reported in the present study are also concordant with those of the EMPA-REG BP trial where, compared with placebo, empagliflozin reduced ambulatory SBP by 3.4 (-4.8 to -2.1) mmHg and 4.2 (-5.5 to -2.8) mmHg in the 10 mg and 25 mg formulations, respectively in patients with T2D and hypertension.<sup>12</sup> The BP-lowering effect of empagliflozin was retained in patients who were receiving one or multiple antihypertensive medications.<sup>13</sup> The BP-lowering properties of empagliflozin, may likely be extended to a class effect, as dapagliflozin also reduced office BP in patients receiving background antihypertensive treatment,<sup>27</sup> and canagliflozin also reduced BP, especially in patients with baseline SBP >140 mmHg.<sup>28</sup>

## **Clinical and Research Implications**

These findings may have major clinical and research implications as empagliflozin could be a therapeutic option for BP control in patients with hypertension and T2D, providing survival and renal protection benefits beyond its BP-lowering effects. As patients treated with empagliflozin had lower rates of hyperkalemia in our analysis as well as in previous analyses from EMPA-REG OUTCOME,<sup>29</sup>

future studies may evaluate the benefit of empagliflozin in reducing hyperkalemia risk in rHT patients treated with MRAs.

## **Limitations**

Our analysis has some limitations. First, since it is post-hoc and non-prespecified, and the trial was not powered for subgroup analyses, the results must be regarded as hypothesis generating. Although blood pressure measurement was standardized, this was not a dedicated blood pressure trial, blood pressure was measured in the presence of the study personnel and sphygmomanometers might have been different between study sites; therefore, the precision of the values reported may be reduced. However, this imprecision was not systematic and may even reinforce the robustness of our findings (i.e., with variability similar to a ‘real-world’ setting). Finally, the American Heart Association (AHA) uses an inclusive definition of rHT: “rHT is defined as blood pressure (BP) that remains above goal in spite of the concurrent use of 3 antihypertensive agents of different classes. Ideally, 1 of the 3 agents should be a diuretic and all agents should be prescribed at optimal dose amounts”.<sup>9</sup> The presence of ‘true’ rHT is difficult to ascertain in non-HT studies, due to the difficulty in confirming adherence to therapy and performing 24-hour ambulatory blood pressure measurements: such assessments were not performed within the framework of a cardiovascular outcome trial. Furthermore, doses of anti-hypertensive treatments were not captured.

## **CONCLUSIONS**

Empagliflozin induced a clinically relevant reduction in SBP and consistently improved all outcomes regardless of the prHT status. Acknowledging that this is a post-hoc analysis, the consistent findings suggest that due to the optimal dual effect of BP control and CV event reduction, empagliflozin should be considered a therapeutic option for patients with hypertension and T2D.

## **Acknowledgments**

The authors thank the patients who participated in this trial. Editorial assistance, supported financially by Boehringer Ingelheim, was provided by Jonathon Gibbs, CMPP, of Elevate Scientific Solutions.

## Sources of Funding

The EMPA-REG OUTCOME<sup>®</sup> trial was funded by the Boehringer Ingelheim & Eli Lilly and Company Diabetes Alliance.

## Disclosures

J.P.F. reports having received modest travelling fees from Boehringer Ingelheim. D.F. reports CME honoraria and consultation fees from Boehringer Ingelheim, Lilly, Sanofi, AstraZeneca, and Amgen, and DSMB honoraria from NovoNordisk. B.J.K. has received significant grant support from the IZKF Wuerzburg and modest honoraria from Boehringer Ingelheim. C.W. reports significant honoraria from Boehringer Ingelheim and modest honoraria from AstraZeneca, Bayer, Eli Lilly, Mitsubishi, and MSD. B.Z. has received significant speaker fees or consulting honoraria from NovoNordisk, Boehringer Ingelheim, Eli Lilly and Merck and modest fees from Astra Zeneca, Sanofi and Janssen. F.Z. has received modest fees for serving on the board of Boston Scientific; modest consulting fees from Novartis, Takeda, AstraZeneca, Boehringer Ingelheim, GE Healthcare, Relypsa, Servier, Boston Scientific, Bayer, Johnson & Johnson, and Resmed; modest speakers' fees from Pfizer and AstraZeneca and significant disclosure as CardioRenal cofounder. P.R. reports modest grants and or personal fees from Ablative Solutions, AstraZeneca, Bayer, Boehringer Ingelheim, Corvidia, CVRx, Fresenius, G3P, Grunenthal, Idorsia, Novartis, NovoNordisk, Relypsa, Servier, Stealth Peptides, Vifor Fresenius Medical Care Renal Pharma, and significant disclosure as CardioRenal cofounder. A.P.O. and J.T.G. are full-time employees of Boehringer Ingelheim International GmbH, Germany. I.Z. is a full-time employee of Boehringer Ingelheim Pharma GmbH & Co. KG, Germany. S.L. reports significant consulting fees from Hoffmann La Roche and Boehringer Ingelheim

312

313

314

315

316

## REFERENCES

1. American Diabetes Association, 9. Cardiovascular Disease and Risk Management: Standards of Medical Care in Diabetes-2018. *Diabetes Care* **2018**, 41 (Suppl 1), S86-s104.
2. Whelton, P. K.; Carey, R. M.; Aronow, W. S.; Casey, D. E., Jr.; Collins, K. J.; Dennison Himmelfarb, C.; DePalma, S. M.; Gidding, S.; Jamerson, K. A.; Jones, D. W.; MacLaughlin, E. J.; Muntner, P.; Ovbiagele, B.; Smith, S. C., Jr.; Spencer, C. C.; Stafford, R. S.; Taler, S. J.; Thomas, R. J.; Williams, K. A., Sr.; Williamson, J. D.; Wright, J. T., Jr., 2017 ACC/AHA/AAPA/ABC/ACPM/AGS/APhA/ASH/ASPC/NMA/PCNA Guideline for the Prevention, Detection, Evaluation, and Management of High Blood Pressure in Adults: A Report of the American College of Cardiology/American Heart Association Task Force on Clinical Practice Guidelines. *Circulation* **2018**, 138 (17), e484-e594.
3. Williams, B.; Mancia, G.; Spiering, W.; Agabiti Rosei, E.; Azizi, M.; Burnier, M.; Clement, D. L.; Coca, A.; de Simone, G.; Dominiczak, A.; Kahan, T.; Mahfoud, F.; Redon, J.; Ruilope, L.; Zanchetti, A.; Kerins, M.; Kjeldsen, S. E.; Kreutz, R.; Laurent, S.; Lip, G. Y. H.; McManus, R.; Narkiewicz, K.; Ruschitzka, F.; Schmieder, R. E.; Shlyakhto, E.; Tsioufis, C.; Aboyans, V.; Desormais, I., 2018 ESC/ESH Guidelines for the management of arterial hypertension: The Task Force for the management of arterial hypertension of the European Society of Cardiology and the European Society of Hypertension: The Task Force for the management of arterial hypertension of the European Society of Cardiology and the European Society of Hypertension. *J Hypertens* **2018**, 36 (10), 1953-2041.
4. Viazzi, F.; Piscitelli, P.; Ceriello, A.; Fioretto, P.; Giorda, C.; Guida, P.; Russo, G.; De Cosmo, S.; Pontremoli, R., Resistant Hypertension, Time-Updated Blood Pressure Values and Renal Outcome in Type 2 Diabetes Mellitus. *J Am Heart Assoc* **2017**, 6 (9).
5. Carey, R. M.; Calhoun, D. A.; Bakris, G. L.; Brook, R. D.; Daugherty, S. L.; Dennison-Himmelfarb, C. R.; Egan, B. M.; Flack, J. M.; Gidding, S. S.; Judd, E.; Lackland, D. T.; Laffer, C. L.; Newton-Cheh, C.; Smith, S. M.; Taler, S. J.; Textor, S. C.; Turan, T. N.; White, W. B., Resistant Hypertension: Detection, Evaluation, and Management: A Scientific Statement From the American Heart Association. *Hypertension (Dallas, Tex. : 1979)* **2018**, 72 (5), e53-e90.
6. Whelton, P. K.; Carey, R. M.; Aronow, W. S.; Casey, D. E., Jr.; Collins, K. J.; Dennison Himmelfarb, C.; DePalma, S. M.; Gidding, S.; Jamerson, K. A.; Jones, D. W.; MacLaughlin, E. J.; Muntner, P.; Ovbiagele, B.; Smith, S. C., Jr.; Spencer, C. C.; Stafford, R. S.; Taler, S. J.; Thomas, R. J.;

348 Williams, K. A., Sr.; Williamson, J. D.; Wright, J. T., Jr., 2017  
349 ACC/AHA/AAPA/ABC/ACPM/AGS/APhA/ASH/ASPC/NMA/PCNA Guideline for the Prevention,  
350 Detection, Evaluation, and Management of High Blood Pressure in Adults: Executive Summary: A  
351 Report of the American College of Cardiology/American Heart Association Task Force on Clinical  
352 Practice Guidelines. *Circulation* **2018**, *138* (17), e426-e483.

353 7. Daugherty, S. L.; Powers, J. D.; Magid, D. J.; Tavel, H. M.; Masoudi, F. A.; Margolis, K. L.;  
354 O'Connor, P. J.; Selby, J. V.; Ho, P. M., Incidence and prognosis of resistant hypertension in  
355 hypertensive patients. *Circulation* **2012**, *125* (13), 1635-42.

356 8. Mondesir, F. L.; Brown, T. M.; Muntner, P.; Durant, R. W.; Carson, A. P.; Safford, M. M.;  
357 Levitan, E. B., Diabetes, diabetes severity, and coronary heart disease risk equivalence: REasons for  
358 Geographic and Racial Differences in Stroke (REGARDS). *Am Heart J* **2016**, *181*, 43-51.

359 9. Rimoldi, S. F.; Messerli, F. H.; Bangalore, S.; Scherrer, U., Resistant hypertension: what the  
360 cardiologist needs to know. *Eur Heart J* **2015**, *36* (40), 2686-95.

361 10. Zinman, B.; Wanner, C.; Lachin, J. M.; Fitchett, D.; Bluhmki, E.; Hantel, S.; Mattheus, M.;  
362 Devins, T.; Johansen, O. E.; Woerle, H. J.; Broedl, U. C.; Inzucchi, S. E., Empagliflozin, Cardiovascular  
363 Outcomes, and Mortality in Type 2 Diabetes. *The New England journal of medicine* **2015**.

364 11. Azizi, M.; Rossignol, P.; Hulot, J. S., Emerging Drug Classes and Their Potential Use in  
365 Hypertension. *Hypertension* **2019**, Hypertensionaha11912676.

366 12. Tikkanen, I.; Narko, K.; Zeller, C.; Green, A.; Salsali, A.; Broedl, U. C.; Woerle, H. J.,  
367 Empagliflozin reduces blood pressure in patients with type 2 diabetes and hypertension. *Diabetes*  
368 *Care* **2015**, *38* (3), 420-8.

369 13. Mancia, G.; Cannon, C. P.; Tikkanen, I.; Zeller, C.; Ley, L.; Woerle, H. J.; Broedl, U. C.;  
370 Johansen, O. E., Impact of Empagliflozin on Blood Pressure in Patients With Type 2 Diabetes Mellitus  
371 and Hypertension by Background Antihypertensive Medication. *Hypertension (Dallas, Tex. : 1979)*  
372 **2016**, *68* (6), 1355-1364.

373 14. Cherney, D. Z.; Perkins, B. A.; Soleymanlou, N.; Har, R.; Fagan, N.; Johansen, O. E.; Woerle,  
374 H. J.; von Eynatten, M.; Broedl, U. C., The effect of empagliflozin on arterial stiffness and heart rate  
375 variability in subjects with uncomplicated type 1 diabetes mellitus. *Cardiovasc Diabetol* **2014**, *13*, 28.

- 376 15. Chilton, R.; Tikkanen, I.; Cannon, C. P.; Crowe, S.; Woerle, H. J.; Broedl, U. C.; Johansen, O.  
377 E., Effects of empagliflozin on blood pressure and markers of arterial stiffness and vascular  
378 resistance in patients with type 2 diabetes. *Diabetes Obes Metab* **2015**, *17* (12), 1180-93.
- 379 16. Inzucchi, S. E.; Zinman, B.; Fitchett, D.; Wanner, C.; Ferrannini, E.; Schumacher, M.;  
380 Schmoor, C.; Ohneberg, K.; Johansen, O. E.; George, J. T.; Hantel, S.; Bluhmki, E.; Lachin, J. M.,  
381 How Does Empagliflozin Reduce Cardiovascular Mortality? Insights From a Mediation Analysis of the  
382 EMPA-REG OUTCOME Trial. *Diabetes Care* **2018**, *41* (2), 356-363.
- 383 17. Bayliss, G.; Weinrauch, L. A.; D'Elia, J. A., Resistant hypertension in diabetes mellitus. *Curr*  
384 *Diab Rep* **2014**, *14* (8), 516.
- 385 18. Chobanian, A. V.; Bakris, G. L.; Black, H. R.; Cushman, W. C.; Green, L. A.; Izzo, J. L., Jr.;  
386 Jones, D. W.; Materson, B. J.; Oparil, S.; Wright, J. T., Jr.; Roccella, E. J., The Seventh Report of the  
387 Joint National Committee on Prevention, Detection, Evaluation, and Treatment of High Blood  
388 Pressure: the JNC 7 report. *Jama* **2003**, *289* (19), 2560-72.
- 389 19. Cushman, W. C.; Evans, G. W.; Byington, R. P.; Goff, D. C., Jr.; Grimm, R. H., Jr.; Cutler, J. A.;  
390 Simons-Morton, D. G.; Basile, J. N.; Corson, M. A.; Probstfield, J. L.; Katz, L.; Peterson, K. A.;  
391 Friedewald, W. T.; Buse, J. B.; Bigger, J. T.; Gerstein, H. C.; Ismail-Beigi, F., Effects of intensive  
392 blood-pressure control in type 2 diabetes mellitus. *The New England journal of medicine* **2010**, *362*  
393 (17), 1575-85.
- 394 20. Xie, X.; Atkins, E.; Lv, J.; Bennett, A.; Neal, B.; Ninomiya, T.; Woodward, M.; MacMahon,  
395 S.; Turnbull, F.; Hillis, G. S.; Chalmers, J.; Mant, J.; Salam, A.; Rahimi, K.; Perkovic, V.; Rodgers, A.,  
396 Effects of intensive blood pressure lowering on cardiovascular and renal outcomes: updated  
397 systematic review and meta-analysis. *Lancet (London, England)* **2016**, *387* (10017), 435-43.
- 398 21. Aggarwal, R.; Steinkamp, J.; Chiu, N.; Petrie, B.; Mirzan, H., Intensive Blood Pressure  
399 Targets for Diabetic and Other High-Risk Populations: A Pooled Individual Patient Data Analysis.  
400 *Hypertension (Dallas, Tex. : 1979)* **2018**, *71* (5), 833-839.
- 401 22. Wright, J. T., Jr.; Williamson, J. D.; Whelton, P. K.; Snyder, J. K.; Sink, K. M.; Rocco, M. V.;  
402 Reboussin, D. M.; Rahman, M.; Oparil, S.; Lewis, C. E.; Kimmel, P. L.; Johnson, K. C.; Goff, D. C., Jr.;  
403 Fine, L. J.; Cutler, J. A.; Cushman, W. C.; Cheung, A. K.; Ambrosius, W. T., A Randomized Trial of  
404 Intensive versus Standard Blood-Pressure Control. *The New England journal of medicine* **2015**, *373*  
405 (22), 2103-16.



23. Williams, B.; MacDonald, T. M.; Morant, S.; Webb, D. J.; Sever, P.; McInnes, G.; Ford, I.; Cruickshank, J. K.; Caulfield, M. J.; Salsbury, J.; Mackenzie, I.; Padmanabhan, S.; Brown, M. J., Spironolactone versus placebo, bisoprolol, and doxazosin to determine the optimal treatment for drug-resistant hypertension (PATHWAY-2): a randomised, double-blind, crossover trial. *Lancet (London, England)* **2015**, *386* (10008), 2059-68.
24. Moore, M. N.; Atkins, E. R.; Salam, A.; Callisaya, M. L.; Hare, J. L.; Marwick, T. H.; Nelson, M. R.; Wright, L.; Sharman, J. E.; Rodgers, A., Regression to the mean of repeated ambulatory blood pressure monitoring in five studies. *Journal of hypertension* **2019**, *37* (1), 24-29.
25. Rossignol, P.; Claggett, B. L.; Liu, J.; Vardeny, O.; Pitt, B.; Zannad, F.; Solomon, S., Spironolactone and Resistant Hypertension in Heart Failure With Preserved Ejection Fraction. *Am J Hypertens* **2018**, *31* (4), 407-414.
26. Agarwal, R.; Rossignol, P.; Romero, A.; Garza, D.; Mayo, M. R.; Warren, S.; Ma, J.; White, W. B.; Williams, B., Patiromer versus placebo to enable spironolactone use in patients with resistant hypertension and chronic kidney disease (AMBER): a phase 2, randomised, double-blind, placebo-controlled trial. *Lancet* **2019**.
27. Weber, M. A.; Mansfield, T. A.; Alessi, F.; Iqbal, N.; Parikh, S.; Ptaszynska, A., Effects of dapagliflozin on blood pressure in hypertensive diabetic patients on renin-angiotensin system blockade. *Blood Press* **2016**, *25* (2), 93-103.
28. Weir, M. R.; Januszewicz, A.; Gilbert, R. E.; Vijapurkar, U.; Kline, I.; Fung, A.; Meininger, G., Effect of canagliflozin on blood pressure and adverse events related to osmotic diuresis and reduced intravascular volume in patients with type 2 diabetes mellitus. *J Clin Hypertens (Greenwich)* **2014**, *16* (12), 875-82.
29. Wanner, C.; Lachin, J. M.; Inzucchi, S. E.; Fitchett, D.; Mattheus, M.; George, J.; Woerle, H. J.; Broedl, U. C.; von Eynatten, M.; Zinman, B.; Investigators, E.-R. O., Empagliflozin and Clinical Outcomes in Patients With Type 2 Diabetes Mellitus, Established Cardiovascular Disease, and Chronic Kidney Disease. *Circulation* **2018**, *137* (2), 119-129.

## Figure Legends

**Figure 1. Change from baseline in systolic blood pressure over time in patients a) with presumed resistant hypertension and b) no presumed resistant hypertension at baseline including all data up until individual trial termination: mixed effect repeated measurement model results.**

\*MMRM model on the overall population including subject as random effect and, among others, treatment, visit, and presumed resistant hypertension at baseline as well as their corresponding 2- and 3-way interactions as fixed effects (for details on other fixed effects and linear covariates, see “statistical analysis” section).

**Figure 2. Proportion of patients a) with presumed resistant hypertension and b) without presumed resistant hypertension who achieved systolic blood pressure <130 mmHg during the trial in empagliflozin and placebo groups.**

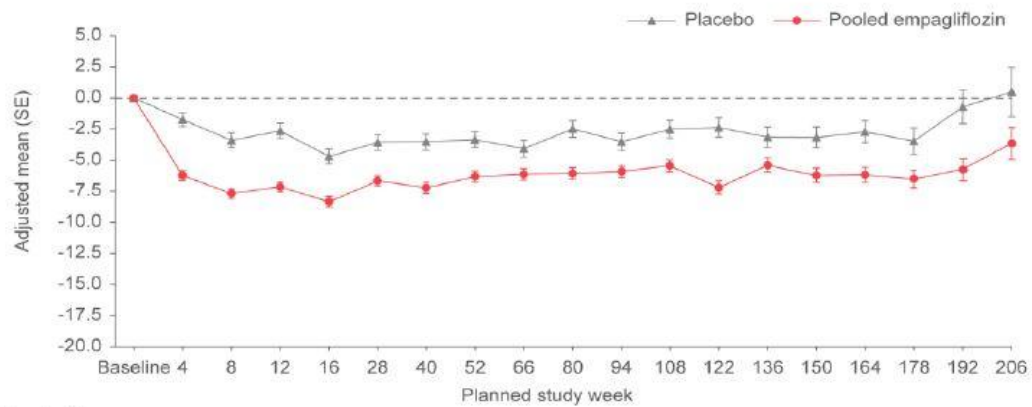
**Figure 3. Treatment effects of empagliflozin versus placebo on outcomes in patients with or without presumed resistant hypertension.**

\*Based on a Cox regression model with terms for age sex, baseline BMI category, baseline HbA1c category, baseline eGFR category, geographical region, treatment, presumed resistant hypertension and treatment by presumed resistant hypertension interaction.

†excludes fatal stroke

**Figure 1**

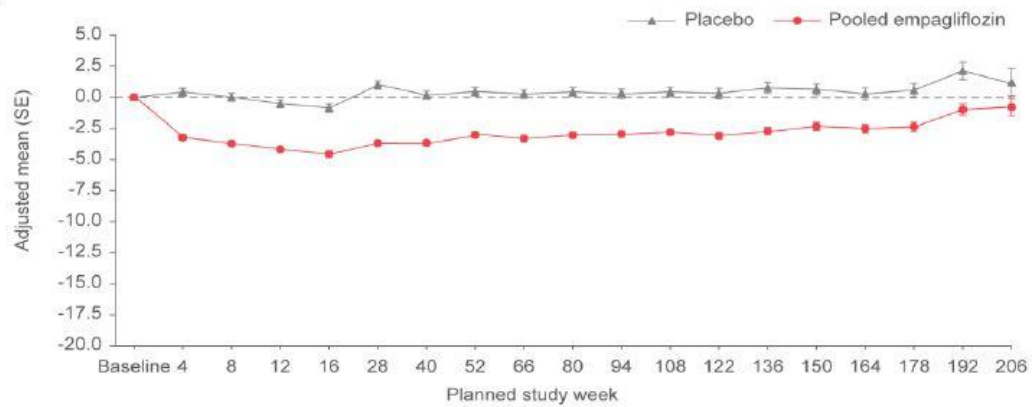
A) rHT



No. with data at visit

Placebo	515	509	494	489	496	489	474	473	458	445	435	383	321	275	244	218	157	90	40
Pooled empagliflozin	1053	1039	1015	1003	1020	1011	1000	985	964	949	943	834	700	596	524	452	333	206	98

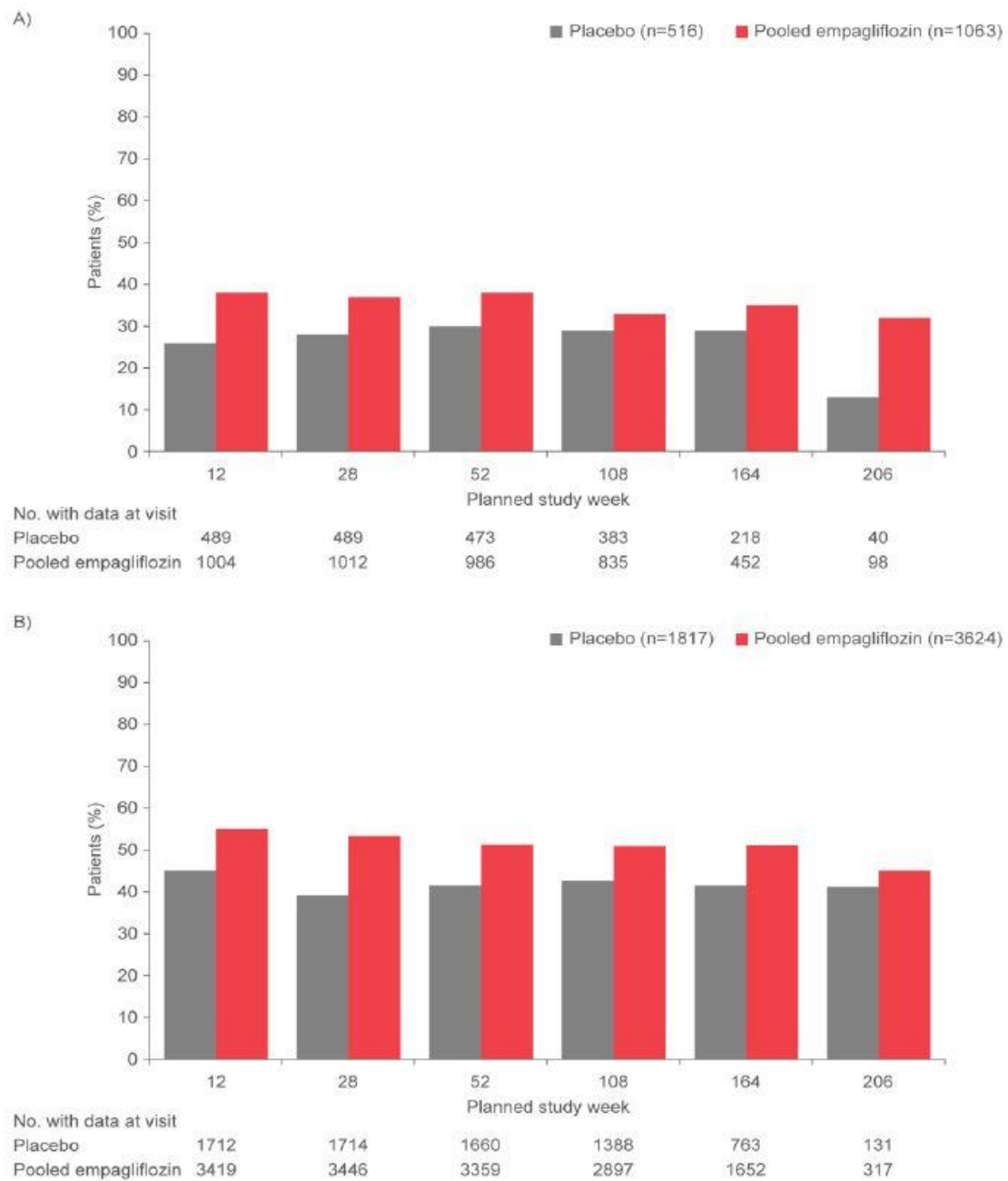
B) No rHT



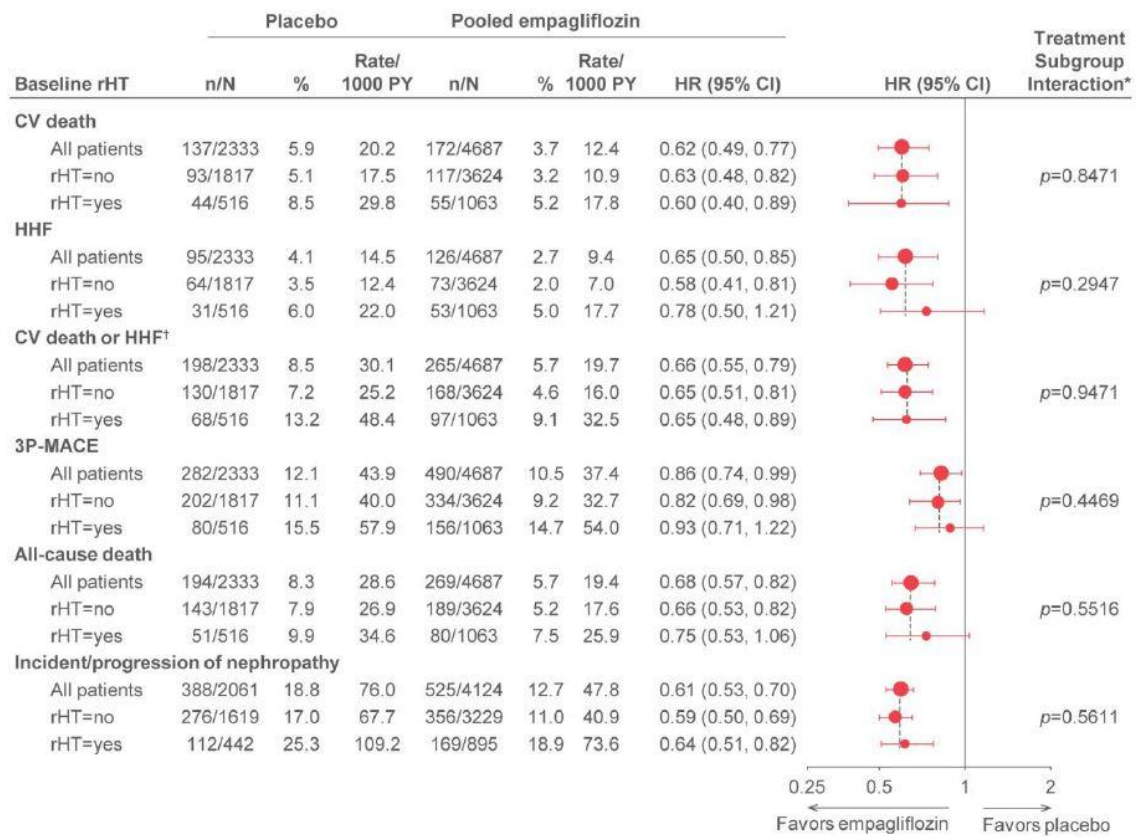
No. with data at visit

Placebo	1807	1777	1748	1712	1739	1714	1687	1660	1615	1579	1539	1388	1171	999	882	763	578	360	131
Pooled empagliflozin	3592	3528	3469	3418	3477	3445	3390	3358	3290	3248	3195	2897	2427	2082	1877	1652	1299	840	317

**Figure 2**



**Figure 3**



**Table 1.** Baseline Characteristics and Baseline Medication use by presumed Resistant Hypertension status

Characteristic	No Resistant Hypertension N=5441	Resistant Hypertension N=1579
Female sex	1543 (28.4)	461 (29.2)
Age, years	62.7±8.7	64.8±8.3
Body mass index, kg/m <sup>2</sup>	30.2±5.2	32.2±5.1
Time since T2D diagnosis, years		
≤1	143 (2.6)	37 (2.3)
>1-5	906 (16.7)	177 (11.2)
>5-10	1382 (25.4)	364 (23.1)
>10	3010 (55.3)	1001 (63.4)
LDL-C, mg/dL	86.5±36.3	82.4±33.7
eGFR, mL/min/1.73 m <sup>2</sup>	75.8±21.4	68.1±20.5
<60	1239 (22.8)	580 (36.7)
Previous stroke, n (%)	1256 (23.1)	381 (24.1)
CAD*, n (%)	4065 (74.7)	1243 (78.7)
Heart failure, n (%)	433 (8.0)	273 (17.3)
HbA1c, %	8.1±0.9	8.1±0.8
SBP, mm Hg	133.4±16.1	142.4±18.2
DBP, mm Hg	76.4±9.6	77.6±10.7
Retinopathy, n (%)	1127 (20.7)	419 (26.5)
Urine albumin-to-creatinine ratio, mg/g, median (Q1, Q3)	16.8 (6.2, 62.8)	25.2 (7.1, 116.7)
Micro albuminuria†	1514 (27.8)	499 (31.6)
Macro albuminuria†	532 (9.8)	237 (15.0)
Left ventricular hypertrophy‡	101 (2.2)	39 (2.9)
Uric acid (mg/dL)	5.8±1.6	6.6±1.8
Baseline medication use		
Antihypertensive drugs	5088 (93.5)	1579 (100.0)
Beta blockers	3197 (58.8)	1357 (85.9)
Diuretics	1456 (26.8)	1579 (100.0)
ACE inhibitors/angiotensin receptor blockers	4140 (76.1)	1526(96.6)
Mineralocorticoid receptor antagonists	170 (3.1)	271 (17.2)
Statins	4097 (75.3)	1306 (82.7)
Anti-platelets	4645 (85.4)	1377 (87.2)
Metformin	4057 (74.6)	1136 (71.9)
Insulin	2447 (45.0)	940 (59.5)

All data are n (%) or mean±SE unless otherwise noted. “Resistant hypertension” was a post-hoc presumptive diagnosis. ACE indicates angiotensin converting enzyme; CAD, coronary artery disease; DBP, diastolic blood pressure; eGFR, estimated glomerular filtration rate; HbA1c, glycated hemoglobin; LDL-C, low-density lipoprotein cholesterol; SBP, systolic blood pressure.

\*Coronary artery disease defined as any of the components of history of myocardial infarction, coronary artery bypass graft, multivessel coronary artery disease, single vessel coronary artery disease. †defined as microalbuminuria UACR 30 to ≤300 mg/g; macroalbuminuria UACR >300 mg/g. ‡defined on ECG as RV5/V6 + SV1/V2 >3.5 mV or RaVL ≥1.3 mV plus ≥1 of the following: left atrial abnormality, left axis deviation, and ST- and/or T-wave changes consistent with LVH.



**Table 2.** Anti-Coagulants, Lipid-Lowering, Antihypertensive and Antihypertensive Drugs Introduced Post-Baseline by presumed Resistant Hypertension status

	<b>No Resistant Hypertension N=5441</b>		<b>Resistant Hypertension N=1579</b>	
	<b>Placebo n=1817</b>	<b>All Empagliflozin n=3624</b>	<b>Placebo n=516</b>	<b>All Empagliflozin n=1063</b>
Anti-hypertensive	882 (48.5)	1550 (42.8)	308 (59.7)	538 (50.6)
Beta blockers	362 (19.9)	627 (17.3)	119 (23.1)	231 (21.7)
Diuretics	426 (23.4)	608 (16.8)	182 (35.3)	291 (27.4)
Mineralocorticoid receptor antagonists	89 (4.9)	86 (2.4)	47 (9.1)	91 (8.6)
ACE inhibitors/angiotensin receptor blockers	533 (29.3)	922 (25.4)	169 (32.8)	302 (28.4)
Statins	446 (24.5)	896 (24.7)	155 (30.0)	249 (23.4)
Anti-platelets	395 (21.7)	732 (20.2)	123 (23.8)	243 (22.9)

All data are n (%). “Resistant hypertension” was a post-hoc presumptive diagnosis. ACE indicates angiotensin-converting enzyme.



**Table 3.** Association of Outcomes with presumed Resistant Hypertension at Baseline

	Placebo			Empagliflozin		
	No resistant hypertension N=1817	Resistant hypertension N=516		No Resistant Hypertension N=3624	Resistant Hypertension N=1063	
	No of Patients With Events (%)	No of Patients With Events (%)	HR* (95% Confidence Interval)  Resistant Hypertension vs No Resistant Hypertension	No of Patients With Events (%)	No of Patients With Events (%)	HR* (95% Confidence Interval)  Resistant Hypertension vs No Resistant Hypertension
CV death	93 (5.1)	44 (8.5)	1.50 (1.04–2.16)	117 (3.2)	55 (5.2)	1.43 (1.03–1.98)
HHF	64 (3.5)	31 (6.0)	1.50 (0.97–2.32)	73 (2.0)	53 (5.0)	2.02 (1.41–2.91)
CV death or HHF†	130 (7.2)	68 (13.2)	1.68 (1.25–2.26)	168 (4.6)	97 (9.1)	1.70 (1.32–2.19)
3P-MACE	202 (11.1)	80 (15.5)	1.31 (1.01–1.71)	334 (9.2)	156 (14.7)	1.49 (1.23–1.81)
All-cause mortality	143 (7.9)	51 (9.9)	1.13 (0.82–1.56)	189 (5.2)	80 (7.5)	1.28 (0.98–1.67)
Incident/worsening nephropathy	276 (17.0)	112 (25.3)	1.55 (1.24–1.93)	356 (11.0)	169 (18.9)	1.68 (1.40–2.03)

\*HR by multivariable Cox regression with the following variables: age, sex, region, HbA1c (category), BMI (category), eGFR (category), treatment, rHT, and treatment by resistant hypertension interaction. “Resistant hypertension” was a post-hoc presumptive diagnosis. †excluding fatal stroke.

	No resistant hypertension		Resistant hypertension	
n/N (%)	Placebo n=1817	Empagliflozin n=3624	Placebo n=516	Empagliflozin n=1063
Week 12	770/1712 (45.0)	1869/3419 (54.7)	129/489 (26.4)	379/1004 (37.7)
Week 28	672/1714 (39.2)	1842/3446 (53.5)	139/489 (28.4)	371/1012 (36.7)
Week 52	688/1660 (41.4)	1724/3359 (51.3)	142/473 (30.0)	371/986 (37.6)
Week 108	590/1388 (42.5)	1480/2897 (51.1)	110/383 (28.7)	271/835 (32.5)
Week 164	319/763 (41.8)	846/1652 (51.2)	64/218 (29.4)	156/452 (34.5)
Week 206	54/131 (41.2)	143/317 (45.1)	5/40 (12.5)	31/98 (31.6)

**Supplemental Table 1. Number of patients with systolic blood pressure <130 mm Hg over time by presumed resistant hypertension at baseline, including all data up until individual trial termination.**

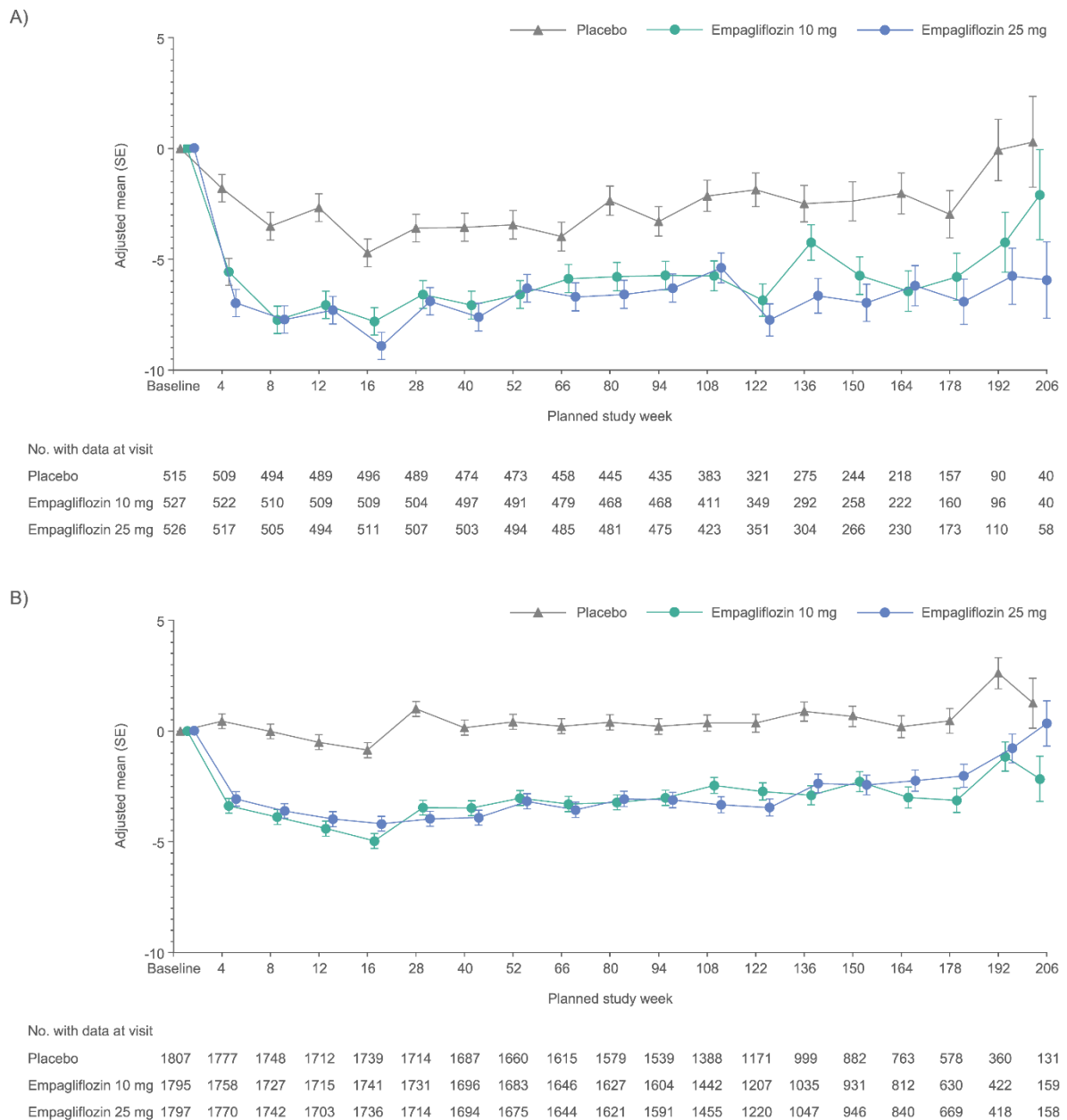
	Placebo				Empagliflozin			
	Without rHT (n=1817)		With rHT (n=516)		Without rHT (n=3624)		With rHT (n=1063)	
	N (%)	Incidence rate/100 patient- years	N (%)	Incidence rate/100 patient- years	N (%)	Incidence rate/100 patient-years	N (%)	Incidence rate/100 patient- years
Any AE	1654 (91.0)	165.34	485 (94.0)	246.44	3249 (89.7)	143.03	981 (92.3)	174.90
SAE	719 (39.6)	20.36	269 (52.1)	30.20	1303 (36.0)	17.30	486 (45.7)	24.42
Severe hypoglycemic episode requiring assistance	26 (1.4)	-	10 (1.9)	-	43 (1.2)	-	20 (1.9)	-
Genital infection	27 (1.5)	0.60	15 (2.9)	1.20	240 (6.6)	2.67	61 (5.7)	2.38
Volume depletion	82 (4.5)	1.86	33 (6.4)	2.70	162 (4.5)	1.77	77 (7.2)	3.01
Acute kidney injury	29 (1.6)	0.64	8 (1.6)	0.64	25 (0.7)	0.27	20 (1.9)	0.76
Hyperkalemia*	59 (3.2)	1.33	19 (3.7)	1.53	72 (2.0)	0.77	21 (2.0)	0.80

**Supplemental Table 2. Frequency of key relevant adverse events by presumed resistant hypertension at baseline.**

AE indicates adverse event; rHT, resistant hypertension; SAE, serious adverse event.

\*Hyperkalemia defined by the MedDRA terms hyperkalemia and blood potassium increase.

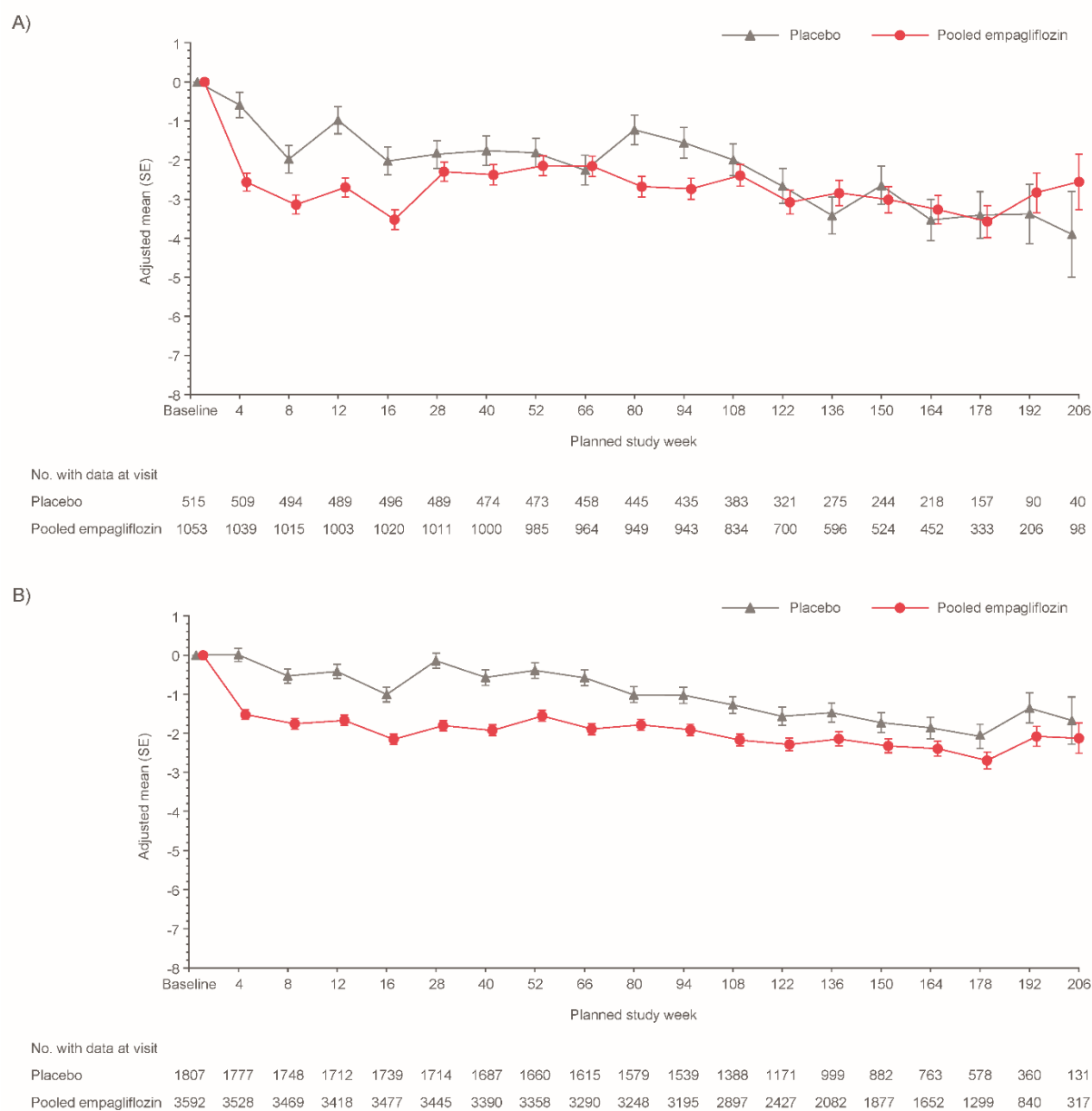
**Supplemental Figure 1. Change from baseline in systolic blood pressure over time up until individual trial termination in patients a) with presumed resistant hypertension and b) without presumed resistant hypertension: mixed effect repeated measurement model results in individual dose groups.**



MMRM model on the overall population including subject as random effect and, among others, treatment, visit, and presumed resistant hypertension at baseline as well as their corresponding 2- and

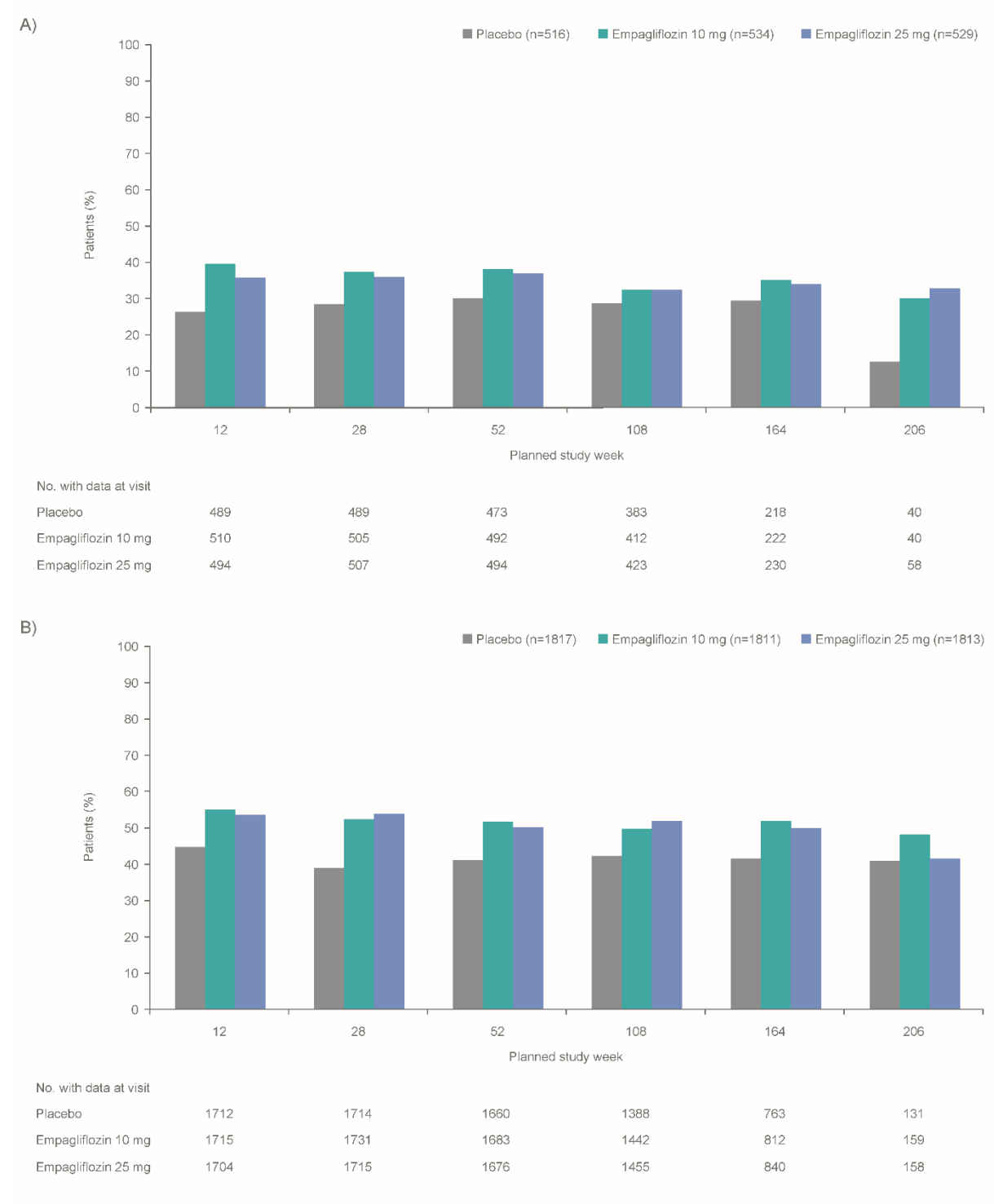
3-way interactions as fixed effects (for details on other fixed effects and linear covariates, see “statistical analysis” section).

**Supplemental Figure 2. Change from baseline in diastolic blood pressure over time up until individual trial termination in patients a) with presumed resistant hypertension and b) without presumed resistant hypertension: mixed effect model repeated measurement model results.**



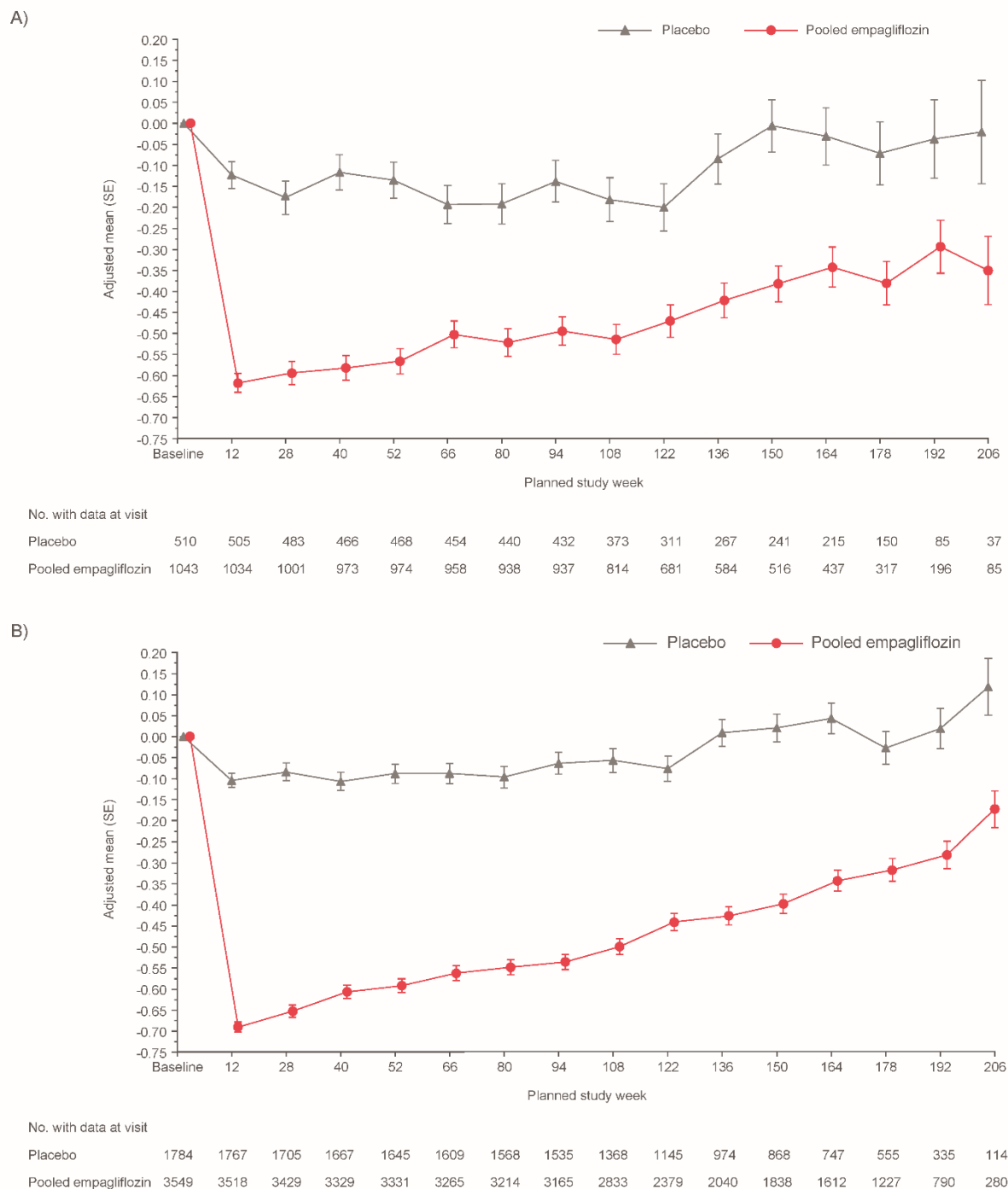
MMRM model on the overall population including subject as random effect and, among others, treatment, visit, and presumed resistant hypertension at baseline as well as their corresponding 2- and 3-way interactions as fixed effects (for details on other fixed effects and linear covariates, see “statistical analysis” section).

**Supplemental Figure 3. Proportion of patients a) with presumed resistant hypertension and b) without presumed resistant hypertension who achieved systolic blood pressure <130 mm Hg during the trial in the placebo group and the two separate empagliflozin doses.**



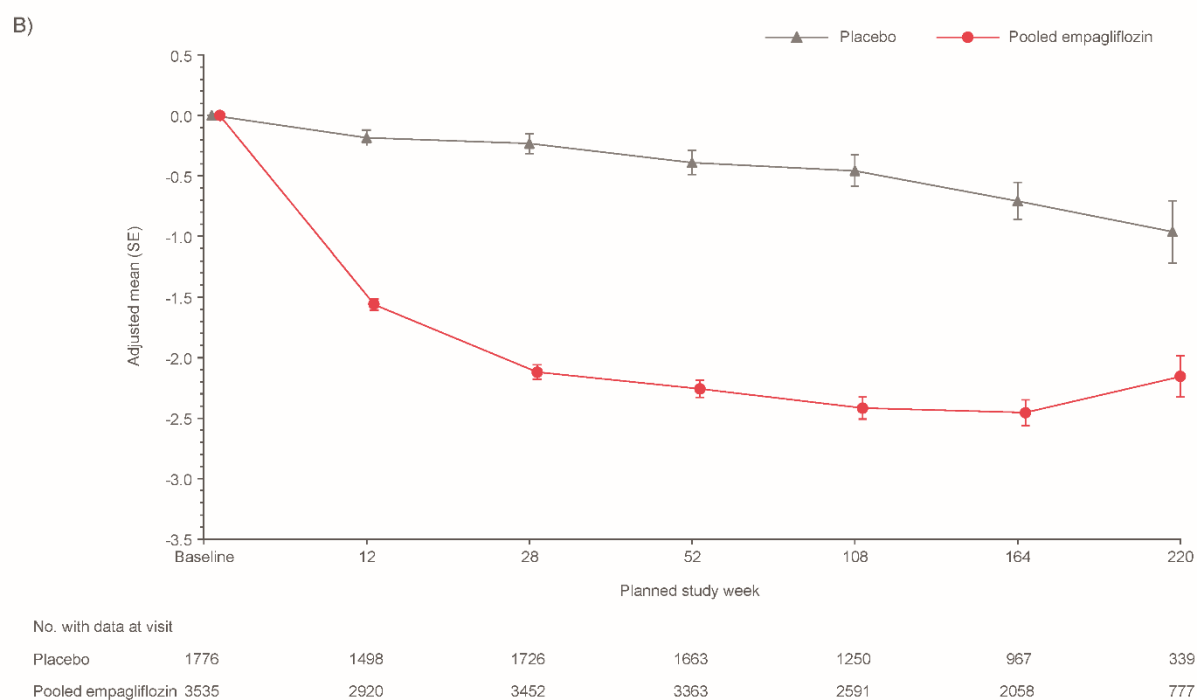
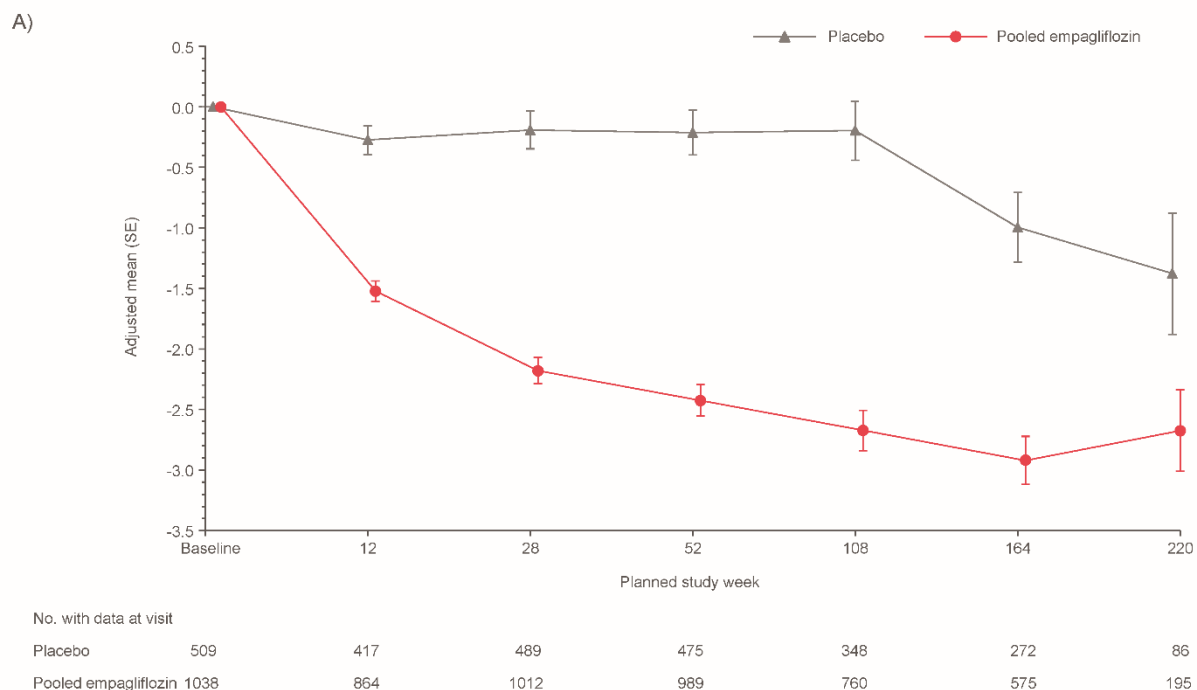


**Supplemental Figure 4. Change in HbA1c levels (%) from baseline over time in patients a) with presumed resistant hypertension and b) without presumed resistant hypertension: mixed effect repeated measurement model results.**



MMRM model on the overall population including subject as random effect and, among others, treatment, visit, and presumed resistant hypertension at baseline as well as their corresponding 2- and 3-way interactions as fixed effects (for details on other fixed effects and linear covariates, see “statistical analysis” section).

**Supplemental Figure 5. Change in body weight (Kg) from baseline in patients a) with presumed resistant hypertension and b) without presumed resistant hypertension: mixed effect repeated measurement model results.**



MMRM model on the overall population including subject as random effect and, among others, treatment, visit, and presumed resistant hypertension at baseline as well as their corresponding 2- and 3-way interactions as fixed effects (for details on other fixed effects and linear covariates, see “statistical analysis” section).

