

22.07.2019

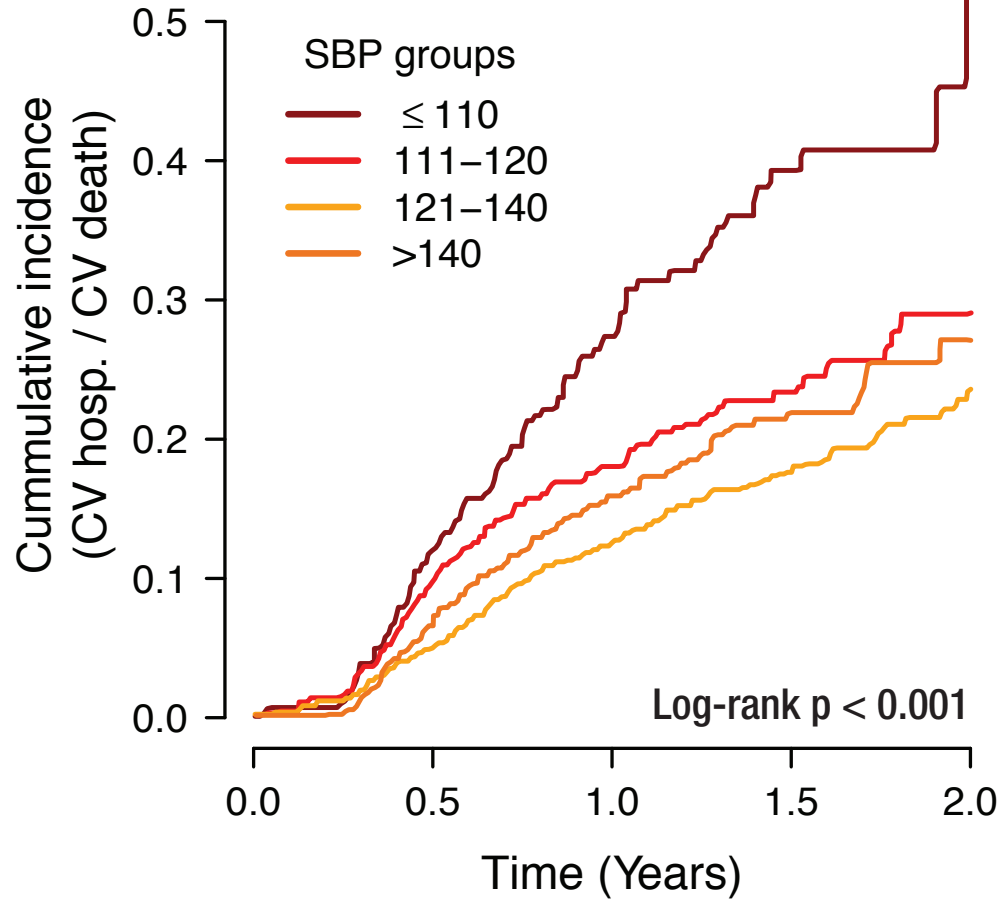
## Supplemental Material

Myocardial reperfusion reverses the J-curve association of cardiovascular risk and diastolic blood pressure in patients with left ventricular dysfunction after myocardial infarction

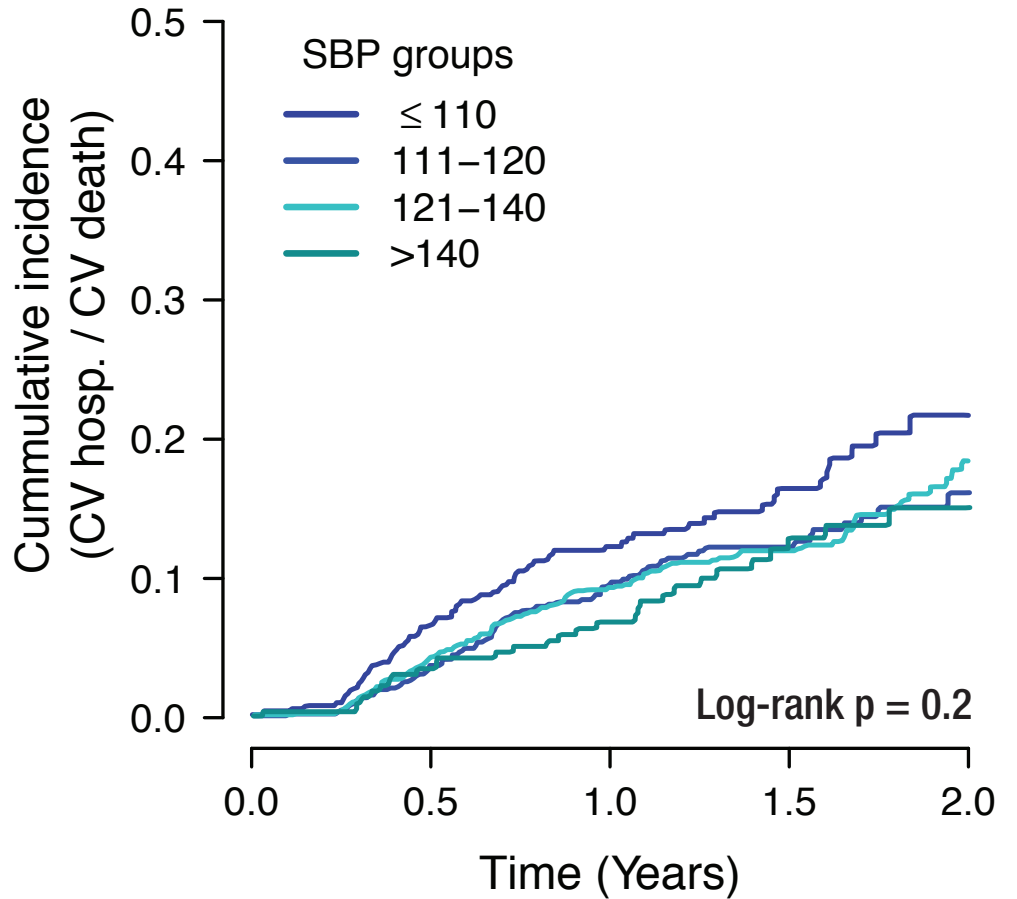
- Insights from the EPHEBUS trial –

Supplement Figure 1

**No reperfusion**



**Reperfusion**



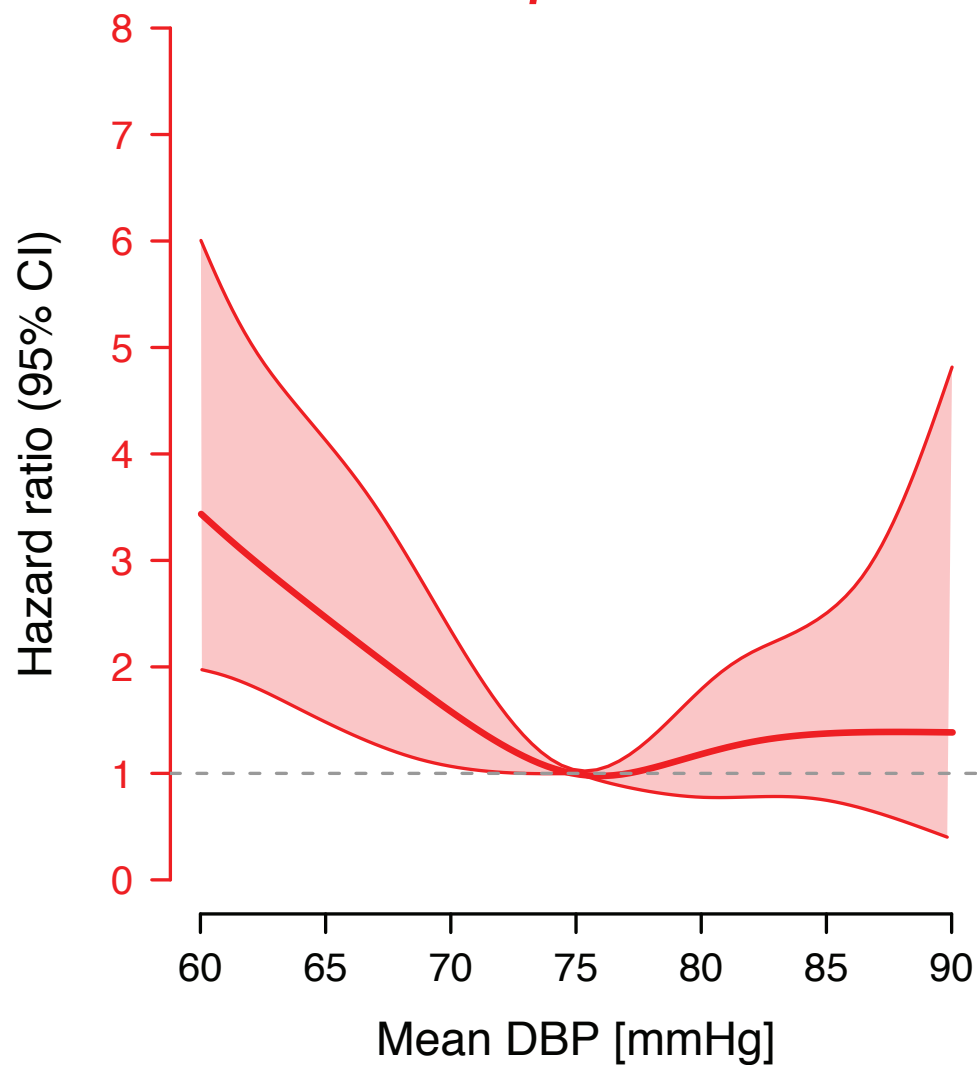
**Numbers at risk:**

|         |      |      |      |     |   |
|---------|------|------|------|-----|---|
| ≤ 110   | 294  | 253  | 184  | 74  | — |
| 111-120 | 597  | 541  | 401  | 187 | — |
| 121-140 | 1431 | 1353 | 1055 | 526 | — |
| >140    | 531  | 495  | 379  | 211 | — |

|         |      |      |     |     |   |
|---------|------|------|-----|-----|---|
| ≤ 110   | 462  | 431  | 355 | 166 | — |
| 111-120 | 680  | 652  | 523 | 268 | — |
| 121-140 | 1111 | 1062 | 891 | 496 | — |
| >140    | 260  | 251  | 212 | 127 | — |

## SBP between 120–130mmHG

*No reperfusion*



*Reperfusion*

