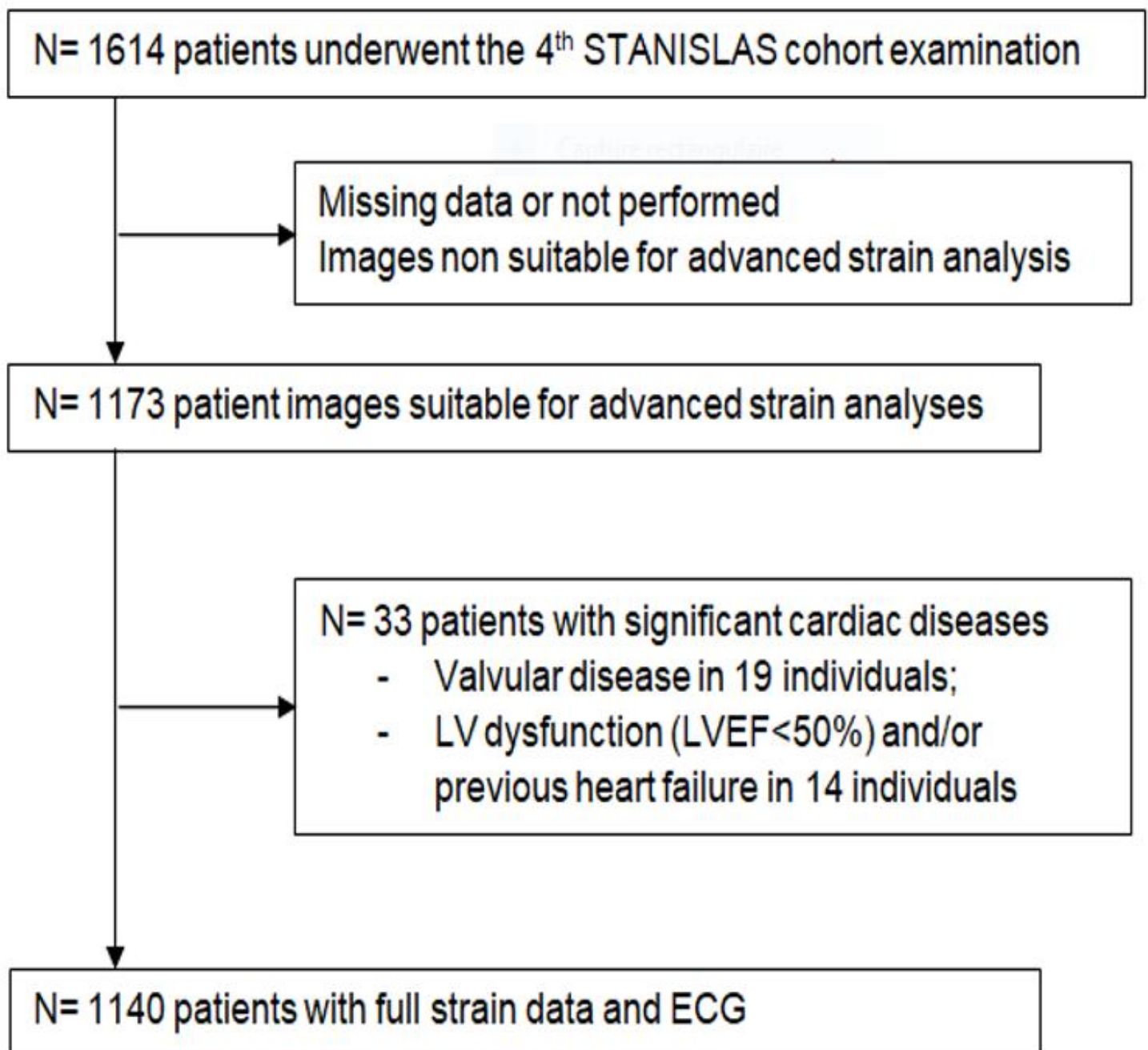


Supplementary figure 1. Study flowchart



**Supplementary table 1. Spearman's Correlation Matrix between QTc, QRS, RR and Deformation****Parameters**

QTc: Corrected QT; GSendo: global peak longitudinal systolic strain endocardium; GSfull-wall: global peak longitudinal systolic strain full-wall myocardium; GSepi: global peak longitudinal systolic strain epicardium; ESS: end-systolic peak longitudinal strain; PSI: post-systolic index (n° of abnormal segments); PST: pre-stretch index (n° of abnormal segments); G: global, S: systolic, P: positive, MD: mechanical dispersion.

	<b>QTc</b>		<b>QRS</b>		<b>RR</b>	
	<b>Rho</b>	<b>p-value</b>	<b>Rho</b>	<b>p-value</b>	<b>Rho</b>	<b>p-value</b>
<b>GSendo %</b>	-0.134	<0.0001	.153	<0.0001	-0.087	0.003
<b>GSfull-wall %</b>	-0.133	<0.0001	0.154	<0.0001	-0.079	0.008
<b>GSepi %</b>	-0.126	<0.0001	0.147	<0.0001	-0.068	0.023
<b>PSI</b>	0.083	0.005	0.035	0.239	0.003	0.915
<b>PST</b>	0.062	0.035	-0.003	0.919	-0.062	0.037
<b>Time peak G</b>	0.290	<0.0001	-0.038	0.198	0.346	<0.0001
<b>Time peak S</b>	0.273	<0.0001	-0.042*	0.161	0.334	<0.0001
<b>MD peak G</b>	0.120	<0.0001	0.012	0.675	0.149	<0.0001
<b>MD peak S</b>	0.075	0.012	-0.034	0.249	0.078	0.009