



HAL
open science

**Plasma D -dimer concentrations predicting stroke risk
and rivaroxaban benefit in patients with heart failure
and sinus rhythm: an analysis from the
COMMANDER-HF trial**

João Pedro Ferreira, Carolyn S P Lam, Stefan D Anker, Mandeep R Mehra,
Dirk van Veldhuisen, William M Byra, David A. La Police, John G F Cleland,
Barry Greenberg, Faiez Zannad

► **To cite this version:**

João Pedro Ferreira, Carolyn S P Lam, Stefan D Anker, Mandeep R Mehra, Dirk van Veldhuisen, et al.. Plasma D -dimer concentrations predicting stroke risk and rivaroxaban benefit in patients with heart failure and sinus rhythm: an analysis from the COMMANDER-HF trial. *European Journal of Heart Failure*, 2020, 10.1002/ejhf.2003 . hal-03009383

HAL Id: hal-03009383

<https://hal.univ-lorraine.fr/hal-03009383>

Submitted on 17 Nov 2020

HAL is a multi-disciplinary open access archive for the deposit and dissemination of scientific research documents, whether they are published or not. The documents may come from teaching and research institutions in France or abroad, or from public or private research centers.

L'archive ouverte pluridisciplinaire **HAL**, est destinée au dépôt et à la diffusion de documents scientifiques de niveau recherche, publiés ou non, émanant des établissements d'enseignement et de recherche français ou étrangers, des laboratoires publics ou privés.

Plasma D-dimer concentrations predicting stroke risk and rivaroxaban benefit in patients with heart failure and sinus rhythm: an analysis from the COMMANDER-HF trial.

João Pedro Ferreira, MD, PhD¹; Carolyn S. P. Lam, MD, PhD^{2,3}; Stefan D. Anker, MD, PhD^{4,5}; Mandeep R. Mehra, MD⁶; Dirk J. van Veldhuisen, MD, PhD⁷; William M. Byra, MD⁸; David A. La Police, BS⁸; John G. F. Cleland, MD⁹; Barry Greenberg, MD¹⁰; Faiez Zannad, MD, PhD¹

Author affiliations:

¹ Université de Lorraine, Centre d'Investigations Cliniques Plurithématique Inserm 1433, Nancy, France, CHRU de Nancy, Inserm U1116, Nancy, France, FCRIN INI-CRCT, Nancy, France.

² National Heart Centre Singapore, Duke-National University of Singapore, Singapore.

³ Department of Cardiology, University Medical Center Groningen, University of Groningen, Groningen, the Netherlands.

⁴ Berlin–Brandenburg Center for Regenerative Therapies, Berlin, Germany.

⁵ Department of Cardiology, German Center for Cardiovascular Research partner site Berlin, Charite Universitätsmedizin Berlin, Berlin, Germany.

⁶ Brigham and Women's Hospital, Harvard Medical School, Boston, Massachusetts.

⁷ Department of Cardiology, University Medical Center Groningen, University of Groningen, Groningen, the Netherlands.

⁸ Janssen Research and Development, Raritan, New Jersey.

⁹ Robertson Centre for Biostatistics and Clinical Trials, University of Glasgow, Glasgow, Scotland.

¹⁰ Cardiology Division, Department of Medicine, University of California, San Diego, La Jolla.

Contact to:

João Pedro Ferreira

Centre d'Investigation Clinique 1433 module Plurithématique, CHRU Nancy - Hopitaux de
Brabois

Institut Lorrain du Coeur et des Vaisseaux Louis Mathieu

4 rue du Morvan, 54500 Vandoeuvre les Nancy

Tel : +33 (0) 3 83 15 73 15

Fax : +33 (0) 3 83 15 73 24

Mail: j.ferreira@chru-nancy.fr or jp7ferreira@hotmail.com

Abstract

Background: D-dimer is a marker of fibrin degradation that reflects intra-vascular coagulation. Therefore, plasma concentrations of D-dimer might predict thromboembolic risk and rivaroxaban treatment effect.

Aims: To investigate the association between D-dimer levels and the risk of stroke and other thrombotic, bleeding and fatal events, and whether D-dimer concentrations could predict rivaroxaban 2.5mg/bd (vs. placebo) effect in patients enrolled in the COMMANDER-HF trial who were in sinus rhythm, had HFrEF and coronary artery disease.

Methods: Survival models with treatment-by-plasma D-dimer interaction. Baseline measurement of D-dimer was available in 4,107 (82%) of 5,022 patients enrolled. Median (percentile₂₅₋₇₅) follow-up was 21 (12.9-32.8) months.

Results: The median (percentile₂₅₋₇₅) plasma concentration of D-dimer was 360 (215-665)ng/mL. The D-dimer tertiles were: 1) ≤ 255 ; 2) 256-515; 3) > 515 ng/mL. Patients within the tertile-3 were older, and had lower BMI, blood pressure, hemoglobin, eGFR, and LVEF. Higher plasma D-dimer concentrations were independently associated with higher rates of death, stroke, and venous thromboembolism. For example, the all-cause death adjusted HR (95%CI) of tertile-3 vs. tertile-1 was 1.77 (1.48-2.11), $p < 0.001$. The effect of rivaroxaban was similar in each tertile of D-dimer for all outcomes except stroke. Patients within the tertile-3 had the greatest absolute and relative stroke reduction (HR [95%CI] tertile-1=1.16 [0.49-2.74], tertile-2=1.45 [0.77-2.73], and tertile-3=0.36 [0.18-0.70]; interaction_p=0.008). The number-needed-to-treat to prevent one stroke in tertile-3 was 36.

Conclusion: In COMMANDER-HF, rivaroxaban reduced the risk of stroke but the benefit may be confined to patients with D-dimer concentrations above 515ng/mL. Prospective trials are warranted to confirm these findings.

Key-words: rivaroxaban; D-dimer; stroke; treatment response.

Introduction

D-dimer is a marker of intra-vascular fibrin degradation formed by the action of thrombin (factor IIa), factor XIIIa, and plasmin^{1, 2}. Low plasma D-dimer concentrations effectively rule out major thromboembolic events whilst high concentrations are associated with various conditions including deep venous thrombosis (DVT) and pulmonary thromboembolism (PTE), atrial fibrillation, stroke, coronary artery disease (CAD)²⁻⁴, and cancer⁵.

In the COMMANDER-HF (Rivaroxaban in Patients with Heart Failure, Sinus Rhythm, and Coronary Disease) trial, compared to placebo, rivaroxaban 2.5mg bd in addition to background antiplatelet therapy did not reduce the rate of the primary outcome (a composite of first myocardial infarction [MI], stroke, or all-cause death). Baseline plasma concentrations of D-dimer did not show any interaction with the effect of rivaroxaban on the primary endpoint⁶. In a *post-hoc* analysis, rivaroxaban reduced the rate of thrombotic events, especially stroke^{7, 8}. Whether plasma D-dimer concentrations predict the occurrence of ischemic stroke and other cardiovascular outcomes, and the response to rivaroxaban has not been studied. We hypothesized that D-dimer could help in identifying patients at higher risk for intravascular coagulation and thromboembolic events, and thus selecting patients more prone to benefit from rivaroxaban treatment.

This analysis investigates the association between baseline plasma D-dimer concentrations with ischemic stroke, and other thrombotic, bleeding, and fatal events, and whether D-dimer predicts the effects of rivaroxaban.

Methods

Study populations

COMMANDER-HF was an international, double-blind, randomized trial comparing the factor-Xa inhibitor rivaroxaban (2.5 mg bd) vs. placebo. Key inclusion criteria included history of chronic HF for 3 or more months, left ventricular ejection fraction (LVEF) of 40% or less, history of CAD, absence of atrial fibrillation or other indication for chronic anticoagulation, and treatment for an episode of decompensated HF (i.e., the index event) within the previous 21 days. Decompensated HF was defined by symptoms of worsening dyspnea or fatigue, objective signs of congestion, and/or adjustment of HF medications requiring hospital admission or unscheduled parenteral diuretic^{6,9}.

Investigators reported outcomes on detailed case report forms, and the sponsor's clinical operations team verified the events using source-data. All participants provided written informed consent. The protocol was approved by the appropriate institutional review board or ethics committee at each site.

Based on review of patient characteristics and the blinded event rate after 1,155 patients had been enrolled, the steering committee amended the enrollment criteria to require a plasma concentration of NT-pro BNP level ≥ 800 ng/L or BNP ≥ 200 ng/L at any time between the index admission for decompensated HF and randomization. Simultaneous with the amendment, enrollment in the Asia-Pacific region and several additional countries began^{6,10}.

Study outcomes

In COMMANDER-HF the primary efficacy outcome was the composite of death from any cause, MI, or stroke. Secondary efficacy outcomes included death from cardiovascular causes, rehospitalization for worsening HF (HFH), rehospitalization for cardiovascular

events, and the composite of death from cardiovascular causes or HFH. Rivaroxaban did not reduce the incidence of the primary efficacy outcome nor HFH; however, the incidence of stroke was reduced⁷. The principal safety outcome was the composite of fatal bleeding or bleeding into a critical space with a potential for causing permanent disability. Secondary safety outcomes included bleeding events requiring hospitalization and clinically overt major bleeding events as defined by the International Society on Thrombosis and Haemostasis (ISTH) (i.e., associated with a decrease in hemoglobin level of ≥ 2 g/dL, transfusion of 2 or more units of packed red cells or whole blood, a critical site [intracranial, intraspinal, intraocular, pericardial, intraarticular, intramuscular with compartment syndrome, or retroperitoneal], or a fatal outcome)^{6, 10}. The median follow-up duration was 21.1 months (percentile₂₅₋₇₅, 12.9-32.8).

D-dimer determination

Baseline plasma D-dimer concentrations were measured at a central laboratory using frozen (-20°C) citrated plasma with Siemens Healthcare Diagnostics INNOVANCE® D-dimer reagents. The intra- and inter assay precision is 1.5 to 7.8 and 2.2 to 7.9% coefficient of variation, respectively. Among the 5022 patients enrolled in COMMANDER-HF, D-dimer levels were available in 4107 (82%).

Statistical analysis

The baseline characteristics of the population were compared across tertiles of plasma D-dimer concentrations using a p for trend comparison of means, medians or proportions (as appropriate). We have chosen to divide the D-dimer levels in tertiles to allow the comparison of tendencies across D-dimer levels and, simultaneously, preserve power to study subgroups, particularly regarding less frequent events (such as stroke). Number and proportion of events, person-time exposures and event-rates (per 100 person-years) were

computed across D-dimer tertiles. The risk associated with plasma D-dimer concentrations was explored in Cox models using D-dimer tertiles (with the lower D-dimer level tertile set as referent) and also using continuous restricted cubic splines with five knots. All models were adjusted for age, sex, race, diabetes, prior MI, stroke, PCI/CABG, NYHA class, body mass index (BMI), systolic blood pressure, LVEF, estimated glomerular filtration rate (eGFR), anemia, dual antiplatelet therapy, treatment allocation (rivaroxaban or placebo) and stratified on geographic region⁶. A treatment-by-D-dimer concentration interaction was tested in the survival models. Whenever the interaction was significant, the effect of treatment was furtherly explored by subgroups of D-dimer tertiles and also using Log transformed plasma D-dimer concentrations (to maintain the log-linearity assumption). Cumulative incidence rates were computed using the Nelson-Aalen method. Absolute risk reduction and number needed to treat to benefit (NNT) were also assessed. The predictive capacity of D-dimer was computed using the Somers` D method and compared with that of CHA₂DS₂-VAsC and with a stroke risk score for patients without atrial fibrillation who had a high-risk MI - the HRMI stroke risk score¹¹. We repeated some of the models (for events such as stroke) using a competing risk approach as described by Fine and Gray with all-cause death set as a risk competitor¹². We have also repeated the analysis using multiple imputation by chained equations ("MICE") for the missing plasma D-dimer concentrations. The analyses were repeated across 10 imputed datasets. The proportional hazards assumption was tested by plotting the Schoenfeld residuals over time; the residuals were independent of time and no evidence of proportional hazards violation was found. A 2-sided p value of <0.05 was considered significant. Stata® version 16 (StataCorp. 2019. College Station, TX: StataCorp LLC) was used for the analysis.

Results

Patients` characteristics by plasma D-dimer concentrations

The comparison of the patients in whom D-dimer levels were determined (n =4107) vs. those in whom the D-dimer levels were not determined (n =915) is depicted in the **Supplemental Table 1**. Patients with D-dimer levels available were slightly older (67 vs. 65yr) and less often from Eastern Europe (62.5 vs. 71.7%), but the majority of the characteristics were well balanced.

Among the 4107 patients with available D-dimer, the median (percentile₂₅₋₇₅) plasma D-dimer concentration was 360 (215-665) ng/mL. Three similarly distributed quantiles of plasma D-dimer concentrations were created: the tertile 1 with plasma D-dimer concentrations ≤ 255 ng/mL and 1373 patients, tertile 2 with plasma D-dimer concentrations between 256 ng/mL and 515 ng/mL and 1365 patients, and tertile 3 with plasma D-dimer concentrations >515 ng/mL and 1369 patients. Patients with higher plasma D-dimer concentrations were older, had lower BMI, blood pressure, hemoglobin, eGFR, LVEF, were less often from Eastern Europe, and less often had a prior MI. **Table 1**.

Events and event rates

Higher plasma D-dimer concentrations were independently associated with higher rates of the primary composite outcome, and higher rates of all-cause, cardiovascular and sudden death, HF-rehospitalization, stroke of any cause, ischemic stroke, and deep venous thrombosis/pulmonary thromboembolism (DVT/TEP). Higher d-dimer levels were also associated with a thromboembolic composite of MI, ischemic stroke, sudden death and DVP/TEP. Bleeding and MI rates did not significantly differ by plasma D-dimer concentrations. **Table 2 & Figure 1**.

Rivaroxaban effect

Rivaroxaban effect was homogenous across D-dimer tertiles for all outcomes except stroke of any cause and ischemic stroke. Patients in the 3rd tertile of plasma D-dimer concentrations (>515 ng/mL) benefited from treatment with rivaroxaban for reducing all strokes, whereas patients with lower plasma D-dimer concentrations did not: HR (95%CI) tertile 1 =1.16 (0.49-2.74), tertile 2 =1.45 (0.77-2.73), and tertile 3 =0.36 (0.18-0.70); p for interaction =0.008. The number needed to treat (NNT) for patients in the 3rd tertile was 36.

Table 2, Table 3 & Figure 2. The treatment-by-D-dimer interaction remained statistically significant with D-dimer levels as a continuous log-transformed variable (p for interaction =0.012). **Figure 3.** Using the competing risk model, multiple imputations and bootstrap replications (x1000) gave similar results. **Supplemental Table 2.** Similar results were also found when removing patients who developed atrial fibrillation during the follow-up, of whom only 5 had a stroke. D-dimer alone provided higher predictive accuracy for the risk of stroke than the CHA₂DS₂-VASc or the HRMI stroke risk score: C-index for D-dimer alone =0.64 (0.58-0.69), for CHA₂DS₂-VASc =0.59 (0.54-0.64), and for the stroke risk score =0.56 (0.50-0.62). Moreover, these clinical scores did not predict the response to treatment.

Supplemental Tables 3 & 4.

The main findings are summarized in the **Graphical Abstract**.

Discussion

Our results confirm the independent prognostic association of plasma D-dimer concentrations with adverse outcomes, particularly for fatal events where the association rose steeply even within the lowest tertile of plasma D-dimer concentrations and stabilized at the highest risk with plasma D-dimer concentrations around 500 ng/mL. The associations for DVT/PTE and bleeding were imprecise due to the low number of events. Interestingly, D-

dimer were not associated with MI risk. Importantly, only patients with higher plasma D-dimer concentrations (above ≈ 500 ng/mL) appeared to benefit from rivaroxaban for stroke reduction, with a substantial magnitude of relative and absolute benefit.

A D-dimer level below 250 ng/mL has a high predictive value for ruling out DVT/PTE¹³, and many authors even consider a higher cut-off (up to 500 ng/mL) for ruling out DVT/PTE¹⁴. However, in COMMANDER-HF the risk of all-cause and cardiovascular death increased steeply with plasma D-dimer concentrations above 100 ng/mL, which might have been driven by HF re-hospitalizations (as discussed below). The risk increment of fatal events was linear up to 500 ng/mL, where the risk association reached a plateau. These results were different from those observed for stroke where the associations were present only at higher D-dimer levels, while no statistically significant association was observed between D-dimer concentration and MI. There were few DVT/PTE and bleeding events, and the associations were imprecise, but they suggest that higher plasma D-dimer concentrations may also be associated with the occurrence of these events. The findings above described are interesting *per se*, and may suggest different pathophysiological mechanisms for different events.

Heart failure, a condition present in all COMMANDER-HF patients is, in itself, an hypercoagulable state that may both increase D-dimer and thrombotic events^{8,15}. Along with HF re-hospitalization, the all-cause and cardiovascular death risk were higher even for plasma D-dimer concentrations within the “normal” range (<250 ng/mL). Heart failure re-hospitalization was by far the most common outcome event in COMMANDER-HF and hospitalized patients may present slightly elevated plasma D-dimer concentrations and have a high risk of dying, which might explain why relatively low plasma D-dimer concentrations were associated with fatal events^{15,16}. In a *post-hoc* analysis of the ARISTOTLE (Apixaban

versus Warfarin in Patients with Atrial Fibrillation) trial, higher plasma D-dimer concentrations were independently associated with increased risk of stroke/systemic embolic events, all-cause and cardiovascular death, and major bleeds¹⁷. Higher plasma D-dimer concentrations were also associated with adverse outcomes in sub-studies of the ATLAS ACS-TIMI 46 and RE-LY trials^{4, 18}. Regarding stroke, in COMMANDER-HF an ischemic event was by far the most frequent (82%) form of stroke⁷; meaning that many of these patients could have undetected paroxysmal atrial fibrillation, a patent foramen ovale, or a left intraventricular (or atrial) thrombi, that increased the ischemic stroke but not the MI risk. It is also possible that some of these patients had undiagnosed cancer or other pro-thrombotic conditions (e.g., factor V Leiden or other mutations, used certain prothrombotic drugs, or had low mobility) leading to a hypercoagulable state that could increase the risk of stroke and systemic embolism. It should be noted that atrial fibrillation and cancer are also conditions that can raise the plasma D-dimer concentrations way above normal and thus may explain both the high event risk and plasma D-dimer concentrations^{5, 19}. Furthermore, in an observational study, the plasma D-dimer concentrations were disproportionately elevated in patients with cardioembolic stroke (vs. small or large vessel occlusion and other forms of stroke) with an optimal cut-off for diagnosis around 1800 ng/mL³, much superior than the cut-off found in our study, suggesting that patients at risk for embolic stroke may have ongoing clot formation with high fibrin turnover which may serve as substrate for the action of rivaroxaban.

Even more interesting and unique was the finding that plasma D-dimer concentrations were associated with a better response to rivaroxaban for stroke reduction. It is plausible that the interaction might be mediated by D-dimer, where higher levels could identify both patients at high risk for stroke and with a hypercoagulable state with “fibrin-

rich” clot formation serving as substrate for the action of rivaroxaban. Given the low doses used in COMMANDER-HF the bleeding event rates were overall low and rivaroxaban effect on bleeding was not influenced by the plasma D-dimer concentrations; thus, providing an optimal stroke-bleeding trade-off profile. The present results support the hypothesis that patients with coronary artery disease, heart failure, reduced ejection fraction and sinus rhythm may benefit from low dose rivaroxaban for stroke prevention when plasma D-dimer concentrations are elevated. In COMPASS (Rivaroxaban with or without Aspirin in Stable Cardiovascular Disease)²⁰, regimens containing rivaroxaban (with or without aspirin) also reduced stroke but not MI, supporting the fibrin clot embolic hypothesis, rather than a local “anti-thrombotic” effect. Similar analysis stratified by plasma D-dimer concentrations was not provided in COMPASS where only 12% of the patients had HFrEF²¹, and the COMPASS results may not apply to patients with the characteristics of those in COMMANDER-HF who had symptomatic HFrEF with a recent decompensation. Thus, these hypothesis-generating data suggest that plasma D-dimer concentrations may help in better identifying patients with HF and CAD in sinus rhythm who may benefit from low dose rivaroxaban for stroke prevention. Such a hypothesis may be worth testing in a dedicated trial.

Limitations

Several limitations should be acknowledged in this study. This is a post-hoc analysis of the COMMANDER-HF trial and the interaction by plasma D-dimer concentrations was prespecified for the primary outcome but not for stroke alone; therefore, these findings should be regarded as hypothesis generating. Moreover, we have performed several non-prespecified interaction tests and it is possible that the significant interaction observed for stroke is a chance finding. No linear dose-response association between D-dimer levels and rivaroxaban benefit on stroke was observed, which may limit the biological plausibility of

our findings. Stroke (cause-specific death and other non-fatal events) lacked formal independent adjudication by a clinical events committee and instead relied on site investigator-based event adjudication. However, data collection to support site adjudication was carefully performed. As cerebral imaging was not uniformly available, we used stroke from any cause as the main studied outcome; but the results remained similar when using only strokes classified as ischemic. The bleeding and DVT/PTE rates were low, which affected the precision around the association of the plasma D-dimer concentrations with these events. Despite the adjustment performed using several variables with prognostic value, we cannot eliminate residual confounding in the associations reported in this manuscript.

Conclusion

In COMMANDER-HF, rivaroxaban reduced the risk of stroke but the benefit may be confined to patients with D-dimer concentrations above 515 ng/mL. These findings are hypothesis-generating and prospective trials are warranted to confirm whether D-dimer concentrations may be used to predict the effect of rivaroxaban.

Disclosures

JPF has received consulting fees from Boehringer Ingelheim. MRM reports consulting relationships with Abbott, Medtronic, Janssen, Mesoblast, Portola, Bayer, NupulseCV, FineHeart, Leviticus, Roivant, Baim Institute for Clinical Research and Triple Gene. BG is co-PI of COMMANDER-HF, Consultant for Actelion, Akcea, Amgen, Bayer, EBR Systems, Ionis, Janssen, Myokardia, Novartis, Relypsa, Rocket, Sanofi, Viking and Zensun. All other authors reported no conflicts of interest with regards to this manuscript.

Funding

The COMMANDER-HF trial was supported by Janssen Research and Development.

Bibliography

1. Adam, S. S.; Key, N. S.; Greenberg, C. S., D-dimer antigen: current concepts and future prospects. *Blood* **2009**, *113* (13), 2878-87.
2. Lowe, G. D., Fibrin D-dimer and cardiovascular risk. *Semin Vasc Med* **2005**, *5* (4), 387-98.
3. Zi, W. J.; Shuai, J., Plasma D-dimer levels are associated with stroke subtypes and infarction volume in patients with acute ischemic stroke. *PLoS One* **2014**, *9* (1), e86465.
4. Siegbahn, A.; Oldgren, J.; Andersson, U.; Ezekowitz, M. D.; Reilly, P. A.; Connolly, S. J.; Yusuf, S.; Wallentin, L.; Eikelboom, J. W., D-dimer and factor VIIa in atrial fibrillation - prognostic values for cardiovascular events and effects of anticoagulation therapy. A RE-LY substudy. *Thromb Haemost* **2016**, *115* (5), 921-30.
5. Dai, H.; Zhou, H.; Sun, Y.; Xu, Z.; Wang, S.; Feng, T.; Zhang, P., D-dimer as a potential clinical marker for predicting metastasis and progression in cancer. *Biomed Rep* **2018**, *9* (5), 453-457.
6. Zannad, F.; Anker, S. D.; Byra, W. M.; Cleland, J. G. F.; Fu, M.; Gheorghide, M.; Lam, C. S. P.; Mehra, M. R.; Neaton, J. D.; Nessel, C. C.; Spiro, T. E.; van Veldhuisen, D. J.; Greenberg, B., Rivaroxaban in Patients with Heart Failure, Sinus Rhythm, and Coronary Disease. *N Engl J Med* **2018**.
7. Mehra, M. R.; Vaduganathan, M.; Fu, M.; Ferreira, J. P.; Anker, S. D.; Cleland, J. G. F.; Lam, C. S. P.; van Veldhuisen, D. J.; Byra, W. M.; Spiro, T. E.; Deng, H.; Zannad, F.; Greenberg, B., A comprehensive analysis of the effects of rivaroxaban on stroke or transient ischaemic attack in patients with heart failure, coronary artery disease, and sinus rhythm: the COMMANDER HF trial. *Eur Heart J* **2019**, *40* (44), 3593-3602.
8. Greenberg, B.; Neaton, J. D.; Anker, S. D.; Byra, W. M.; Cleland, J. G. F.; Deng, H.; Fu, M.; La Police, D. A.; Lam, C. S. P.; Mehra, M. R.; Nessel, C. C.; Spiro, T. E.; van Veldhuisen, D. J.; Vanden Boom, C. M.; Zannad, F., Association of Rivaroxaban With Thromboembolic Events in Patients With Heart Failure, Coronary Disease, and Sinus Rhythm: A Post Hoc Analysis of the COMMANDER HF Trial. *JAMA Cardiol* **2019**, *4* (6), 515-523.
9. Zannad, F.; Greenberg, B.; Cleland, J. G.; Gheorghide, M.; van Veldhuisen, D. J.; Mehra, M. R.; Anker, S. D.; Byra, W. M.; Fu, M.; Mills, R. M., Rationale and design of a randomized, double-blind, event-driven, multicentre study comparing the efficacy and safety of oral rivaroxaban with placebo for reducing the risk of death, myocardial infarction or stroke in subjects with heart failure and significant coronary artery disease following an exacerbation of heart failure: the COMMANDER HF trial. *Eur J Heart Fail* **2015**, *17* (7), 735-42.
10. Cunningham, J. W.; Ferreira, J. P.; Deng, H.; Anker, S. D.; Byra, W. M.; Cleland, J. G. F.; Gheorghide, M.; Lam, C. S. P.; La Police, D.; Mehra, M. R.; Neaton, J. D.; Spiro, T. E.; van Veldhuisen, D. J.; Greenberg, B.; Zannad, F., Natriuretic Peptide-Based Inclusion Criteria in a Heart Failure Clinical Trial: Insights From COMMANDER HF. *JACC Heart Fail* **2020**.
11. Ferreira, J. P.; Girerd, N.; Gregson, J.; Latar, I.; Sharma, A.; Pfeffer, M. A.; McMurray, J. J. V.; Abdul-Rahim, A. H.; Pitt, B.; Dickstein, K.; Rossignol, P.; Zannad, F., Stroke Risk in Patients With Reduced Ejection Fraction After Myocardial Infarction Without Atrial Fibrillation. *J Am Coll Cardiol* **2018**, *71* (7), 727-735.
12. Fine, J. P.; Gray, R. J., A proportional hazards model for the subdistribution of a competing risk. *J Am Stat Assoc* **1999**, *94* :496-509.

13. Kutinsky, I.; Blakley, S.; Roche, V., Normal D-dimer levels in patients with pulmonary embolism. *Arch Intern Med* **1999**, *159* (14), 1569-72.
14. Dunn, K. L.; Wolf, J. P.; Dorfman, D. M.; Fitzpatrick, P.; Baker, J. L.; Goldhaber, S. Z., Normal D-dimer levels in emergency department patients suspected of acute pulmonary embolism. *J Am Coll Cardiol* **2002**, *40* (8), 1475-8.
15. Yan, W.; Liu, J.; Liu, H.; Lu, J.; Chen, J.; Rong, R.; Song, L.; Tang, H.; Li, J.; He, K., Elevated D-dimer levels predict adverse outcomes in hospitalised elderly patients with chronic heart failure. *Intern Med J* **2019**, *49* (10), 1299-1306.
16. Aispuru, G. R.; Clavier, M. M.; Cardone, A. J.; Gilberto, D. O.; Barousse, A. P., Thrombotic biomarkers and left ventricle characteristics as short-term predictors of thrombotic events in patients hospitalized for acute decompensated heart failure. *Eur J Intern Med* **2012**, *23* (6), 545-51.
17. Christersson, C.; Wallentin, L.; Andersson, U.; Alexander, J. H.; Ansell, J.; De Caterina, R.; Gersh, B. J.; Granger, C. B.; Hanna, M.; Horowitz, J. D.; Huber, K.; Husted, S.; Hylek, E. M.; Lopes, R. D.; Siegbahn, A., D-dimer and risk of thromboembolic and bleeding events in patients with atrial fibrillation--observations from the ARISTOTLE trial. *J Thromb Haemost* **2014**, *12* (9), 1401-12.
18. AlKhalfan, F.; Kerneis, M.; Nafee, T.; Yee, M. K.; Chi, G.; Plotnikov, A.; Braunwald, E.; Gibson, C. M., D-Dimer Levels and Effect of Rivaroxaban on Those Levels and Outcomes in Patients With Acute Coronary Syndrome (An ATLAS ACS-TIMI 46 Trial Substudy). *Am J Cardiol* **2018**, *122* (9), 1459-1464.
19. Danese, E.; Montagnana, M.; Cervellin, G.; Lippi, G., Hypercoagulability, D-dimer and atrial fibrillation: an overview of biological and clinical evidence. *Ann Med* **2014**, *46* (6), 364-71.
20. Eikelboom, J. W.; Connolly, S. J.; Bosch, J.; Dagenais, G. R.; Hart, R. G.; Shestakovska, O.; Diaz, R.; Alings, M.; Lonn, E. M.; Anand, S. S.; Widimsky, P.; Hori, M.; Avezum, A.; Piegas, L. S.; Branch, K. R. H.; Probstfield, J.; Bhatt, D. L.; Zhu, J.; Liang, Y.; Maggioni, A. P.; Lopez-Jaramillo, P.; O'Donnell, M.; Kakkar, A.; Fox, K. A. A.; Parkhomenko, A. N.; Ertl, G.; Stork, S.; Keltai, M.; Ryden, L.; Pogossova, N.; Dans, A. L.; Lanias, F.; Commerford, P. J.; Torp-Pedersen, C.; Guzik, T. J.; Verhamme, P. B.; Vinereanu, D.; Kim, J. H.; Tonkin, A. M.; Lewis, B. S.; Felix, C.; Yusuf, K.; Steg, P. G.; Metsarinne, K. P.; Cook Bruns, N.; Misselwitz, F.; Chen, E.; Leong, D.; Yusuf, S., Rivaroxaban with or without Aspirin in Stable Cardiovascular Disease. *N Engl J Med* **2017**.
21. Branch, K. R.; Probstfield, J. L.; Eikelboom, J. W.; Bosch, J.; Maggioni, A. P.; Cheng, R. K.; Bhatt, D. L.; Avezum, A.; Fox, K. A. A.; Connolly, S. J.; Shestakovska, O.; Yusuf, S., Rivaroxaban With or Without Aspirin in Patients With Heart Failure and Chronic Coronary or Peripheral Artery Disease. *Circulation* **2019**, *140* (7), 529-537.

Table 1. Patients` characteristics by tertiles of plasma D-dimer concentration

Characteristic	D-dimer tertiles (ng/mL)			p-value
	≤255	256-515	>515	
N. (Total =4107)	1373	1365	1369	
Age, yr	63 (57-69)	68 (60-75)	70 (62-77)	<0.001
Age ≥65yr	596 (43.4%)	841 (61.6%)	931 (68.0%)	<0.001
Men	1088 (79.2%)	1042 (76.3%)	1029 (75.2%)	0.033
Region				
Eastern Europe	962 (70.1%)	861 (63.1%)	745 (54.4%)	<0.001
Western Europe and South Africa	72 (5.2%)	137 (10.0%)	171 (12.5%)	
North America	26 (1.9%)	42 (3.1%)	47 (3.4%)	
Asia-Pacific	213 (15.5%)	206 (15.1%)	255 (18.6%)	
Latin America	100 (7.3%)	119 (8.7%)	151 (11.0%)	
Race				
White	1134 (82.6%)	1122 (82.2%)	1062 (77.6%)	<0.001
Black	5 (0.4%)	16 (1.2%)	23 (1.7%)	
Asian	211 (15.4%)	205 (15.0%)	249 (18.2%)	
Other	23 (1.7%)	22 (1.6%)	35 (2.6%)	
Diabetes	547 (39.8%)	591 (43.3%)	559 (40.8%)	0.17
Hypertension	1024 (74.6%)	1043 (76.4%)	1027 (75.0%)	0.51
Myocardial Infarction	1081 (78.7%)	1017 (74.5%)	989 (72.2%)	<0.001
Stroke	107 (7.8%)	133 (9.7%)	140 (10.2%)	0.066
ACEi/ARB	1298 (94.5%)	1273 (93.3%)	1238 (90.4%)	<0.001
MRA	1076 (78.4%)	1035 (75.8%)	1026 (74.9%)	0.090
ARNI	6 (0.4%)	17 (1.2%)	9 (0.7%)	0.045
Beta-blocker	1287 (93.7%)	1264 (92.6%)	1234 (90.1%)	0.002
Diuretic	1364 (99.3%)	1358 (99.5%)	1366 (99.8%)	0.23
Digoxin	130 (9.5%)	123 (9.0%)	131 (9.6%)	0.87
Aspirin	1294 (94.2%)	1270 (93.0%)	1256 (91.7%)	0.037
DAPT	501 (36.5%)	478 (35.0%)	449 (32.8%)	0.17
PCI or CABG	846 (61.6%)	865 (63.4%)	858 (62.7%)	0.63
Cardiac device	9 (0.7%)	22 (1.6%)	42 (3.1%)	<0.001
NYHA class				
I	36 (2.6%)	42 (3.1%)	54 (3.9%)	0.013
II	566 (41.2%)	613 (44.9%)	639 (46.7%)	
III	709 (51.6%)	660 (48.4%)	617 (45.1%)	
IV	62 (4.5%)	50 (3.7%)	59 (4.3%)	
BMI, kg/m ²	28.2 ± 5.1	27.9 ± 5.2	26.7 ± 5.1	<0.001
BMI categories				
<25	385 (28.0%)	414 (30.4%)	577 (42.2%)	<0.001
25-29.9	540 (39.3%)	563 (41.3%)	468 (34.3%)	

≥30	448 (32.6%)	387 (28.4%)	321 (23.5%)	
Heart Rate				
SBP, mmHg	124 ± 15	123 ± 16	120 ± 16	<0.001
DBP, mmHg	75 ± 9	73 ± 9.7	72 ± 10	<0.001
D-dimer, ng/mL	180 (145, 215)	360 (305, 430)	880 (665, 1425)	
Hemoglobin, g/dL	13.9 ± 1.6	13.4 ± 1.7	13.0 ± 1.9	<0.001
Anemia	284 (20.7%)	447 (32.7%)	562 (41.1%)	<0.001
eGFR, mL/min/1.73m ²	74 ± 24	67 ± 22	63 ± 23	<0.001
eGFR categories				
<30	25 (1.8%)	44 (3.2%)	65 (4.7%)	<0.001
30-59.9	362 (26.4%)	502 (36.8%)	619 (45.2%)	
60-89.9	681 (49.6%)	617 (45.2%)	513 (37.5%)	
≥90	305 (22.2%)	202 (14.8%)	172 (12.6%)	
BNP, pg/mL	552 (314, 987)	722 (424, 1256)	795 (445, 1440)	<0.001
NT-proBNP, pg/mL	2385 (1312, 4749)	2884.0 (1470.0, 6360.0)	3437.0 (1865.0, 7927.0)	<0.001
LVEF, %	35 (30.0, 38.0)	34.0 (28.0, 38.0)	32.0 (25.0, 37.0)	<0.001
LVEF ≤35%	736 (53.6%)	852 (62.4%)	934 (68.2%)	<0.001
Rivaroxaban allocation	679 (49.5%)	657 (48.1%)	701 (51.2%)	0.27

Legend: ACEi/ARB, angiotensin converting enzyme inhibitor/angiotensin receptor blocker;

MRA, mineralocorticoid receptor antagonist; ARNI, angiotensin receptor neprilysin inhibitor;

DAPT, dual anti-platelet therapy; PCI or CABG, percutaneous coronary intervention or

coronary artery bypass grafting; BMI, body mass index; SBP, systolic blood pressure; eGFR,

estimated glomerular filtration rate; BNP, brain natriuretic peptide; LVEF, left ventricular

ejection fraction. The proportion of missing values was low (<1%) except for BNP and NT-pro

BNP that had 80% and 42% of missing values, respectively.

Table 2. Events and event rates

D-dimer tertiles (ng/mL)	Events (%)	Event rate (per 100py)	Adj. HR (95%CI)	P-value	Interaction P*
MI, stroke, all-cause death					
≤255 (n =1373)	242 (17.6)	8.5 (7.5-9.7)	Ref.		
256-515 (n =1365)	371 (27.2)	14.5 (13.1-16.0)	1.50 (1.27-1.77)	<0.001	0.41
>515 (n =1369)	444 (32.4)	18.7 (17.1-20.5)	1.72 (1.46-2.02)	<0.001	
MI, stroke, CV death					
≤255 (n =1373)	216 (15.7)	7.6 (6.7-8.7)	Ref.		
256-515 (n =1365)	329 (24.1)	12.8 (11.5-14.3)	1.51 (1.27-1.80)	<0.001	0.44
>515 (n =1369)	376 (27.5)	15.9 (14.3-17.5)	1.67 (1.40-1.99)	<0.001	
MI					
≤255 (n =1373)	46 (3.4)	1.6 (1.2-2.1)	Ref.		
256-515 (n =1365)	61 (4.5)	2.3 (1.8-3.0)	1.27 (0.86-1.88)	0.23	0.78
>515 (n =1369)	66 (4.8)	2.7 (2.1-3.5)	1.31 (0.88-1.95)	0.88	
Stroke (all)					
≤255 (n =1373)	21 (1.5)	0.7 (0.5-1.1)	Ref.		
256-515 (n =1365)	39 (2.9)	1.5 (1.1-2.0)	1.99 (1.16-3.41)	0.013	0.008
>515 (n =1369)	42 (3.1)	1.7 (1.3-2.4)	2.22 (1.28-3.85)	0.004	
Ischemic stroke					
≤255 (n =1373)	18 (1.3)	0.6 (0.4-1.0)	Ref.		
256-515 (n =1365)	34 (2.5)	1.3 (0.9-1.8)	2.00 (1.14-3.64)	0.017	0.017
>515 (n =1369)	34 (2.5)	1.4 (1.0-2.0)	2.12 (1.16-3.86)	0.014	
Haemorrhagic stroke					
≤255 (n =1373)	3 (0.2)	0.1 (0.0-0.3)	Ref.		
256-515 (n =1365)	5 (0.4)	0.2 (0.1-0.5)	1.60 (0.37-6.95)	0.53	0.36
>515 (n =1369)	8 (0.6)	0.3 (0.2-0.7)	2.63 (0.65-10.7)	0.18	
DVT/PTE					
≤255 (n =1373)	2 (0.2)	0.1 (0.0-0.3)	Ref.		
256-515 (n =1365)	8 (0.6)	0.3 (0.2-0.6)	4.32 (0.91-20.6)	0.066	0.30
>515 (n =1369)	16 (1.2)	0.7 (0.4-1.1)	9.46 (2.11-42.5)	0.003	
CV death					
≤255 (n =1373)	174 (12.7)	6.0 (5.1-6.9)	Ref.		
256-515 (n =1365)	271 (19.9)	10.2 (9.0-11.5)	1.52 (1.25-1.84)	<0.001	0.66
>515 (n =1369)	322 (23.5)	13.1 (11.8-14.6)	1.73 (1.42-2.10)	<0.001	
All-cause death					
≤255 (n =1373)	202 (14.7)	6.9 (6.0-8.0)	Ref.		
256-515 (n =1365)	316 (23.2)	11.9 (10.6-13.2)	1.50 (1.25-1.80)	<0.001	0.64
>515 (n =1369)	392 (28.6)	16.0 (14.5-17.6)	1.77 (1.48-2.11)	<0.001	
Sudden cardiac death					
≤255 (n =1373)	90 (6.6)	3.1 (2.5-3.8)	Ref.		
256-515 (n =1365)	128 (9.4)	4.8 (4.0-5.7)	1.53 (1.16-2.02)	0.002	0.77
>515 (n =1369)	117 (8.6)	4.8 (4.0-5.7)	1.43 (1.07-1.91)	0.015	

Thrombotic composite**					
≤255 (n =1373)	153 (11.1)	5.4 (4.6-6.3)	Ref.		
256-515 (n =1365)	220 (16.1)	8.6 (7.5-9.8)	1.52 (1.24-1.88)	<0.001	0.48
>515 (n =1369)	215 (15.7)	9.1 (8.0-10.4)	1.52 (1.22-1.88)	<0.001	
HFH					
≤255 (n =1373)	300 (21.9)	12.0 (10.7-13.4)	Ref.		
256-515 (n =1365)	382 (28.0)	17.3 (15.7-19.2)	1.26 (1.08-1.47)	0.004	0.94
>515 (n =1369)	462 (33.8)	23.9 (21.9-26.2)	1.48 (1.27-1.72)	<0.001	
Bleeding safety main					
≤255 (n =1373)	10 (0.7)	0.3 (0.2-0.6)	Ref.		
256-515 (n =1365)	10 (0.7)	0.4 (0.2-0.7)	0.91 (0.37-2.21)	0.82	0.95
>515 (n =1369)	15 (1.1)	0.6 (0.4-1.0)	1.23 (0.52-2.91)	0.64	
Bleeding ISTH major					
≤255 (n =1373)	25 (1.8)	0.9 (0.6-1.3)	Ref.		
256-515 (n =1365)	36 (2.6)	1.4 (1.0-1.9)	1.25 (0.75-2.11)	0.39	0.87
>515 (n =1369)	51 (3.7)	2.1 (1.6-2.8)	1.50 (0.91-2.48)	0.12	
Bleeding hospitalization					
≤255 (n =1373)	18 (1.3)	0.6 (0.4-1.0)	Ref.		
256-515 (n =1365)	29 (2.1)	1.1 (0.8-1.6)	1.35 (0.74-2.45)	0.33	0.34
>515 (n =1369)	44 (3.2)	1.8 (1.4-2.5)	1.70 (0.95-3.03)	0.073	

Legend: MI, myocardial infarction; CV, cardiovascular; DVT/PTE, deep venous thrombosis or pulmonary thromboembolism; HFH, heart failure re-hospitalization; ISTH, ISTH,

International Society on Thrombosis and Haemostasis: major bleeding is defined by the ISTH as overt bleeding associated with a decrease in hemoglobin level of at least 2 g/dL, transfusion of two or more units of packed red cells or whole blood, a critical site (intracranial, intraspinal, intraocular, pericardial, intraarticular, intramuscular with compartment syndrome, or retroperitoneal), or a fatal outcome.

*Treatment-by-D-dimer tertile interaction term for each outcome.

**The thrombotic composite included a myocardial infarction, ischemic stroke, sudden/unwitnessed death, symptomatic pulmonary embolism, or symptomatic deep venous thrombosis as used by Greenberg B. et al. in Association of Rivaroxaban With Thromboembolic Events in Patients With Heart Failure, Coronary Disease, and Sinus Rhythm. JAMA Cardiol. 2019;4(6):515-523. doi:10.1001/jamacardio.2019.1049.

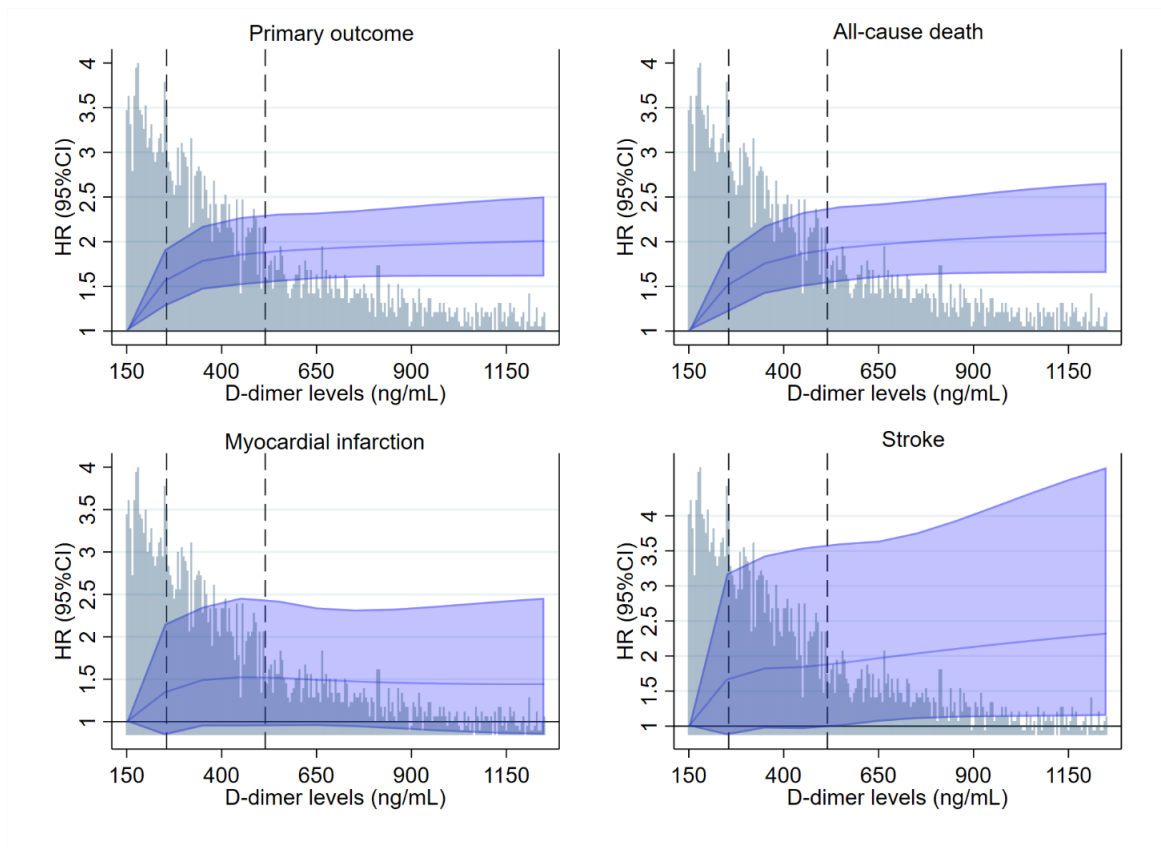
Table 3. Treatment effect on stroke by tertiles of plasma D-dimer concentrations

Rivaroxaban vs. Placebo	Events Riv.	Events Pbo.	HR (95%CI)	P-value	ARR	NNT
D-dimer tertiles (ng/mL)						
≤255 (n =1373)	11 (1.6%)	10 (1.4%)	1.16 (0.49-2.74)	0.73	0.18 (-1.12 to 1.48)	558
256-515 (n =1365)	22 (3.4%)	17 (2.4%)	1.45 (0.77-2.73)	0.26	0.95 (-0.82 to 2.73)	106
>515 (n =1369)	12 (1.7%)	30 (4.5%)	0.36 (0.18-0.7)	0.003	-2.78 (-4.62 to -0.94)	36

Legend: HR, hazard ratio; ARR, absolute risk reduction; NNT, number needed to treat; Riv., rivaroxaban; Pbo., placebo.

The C-index of the model with D-dimer alone is 0.64 (0.58-0.69).

Figure 1. Continuous spline representation of the association between plasma concentrations of plasma D-dimer concentrations and the risk of various clinical outcomes

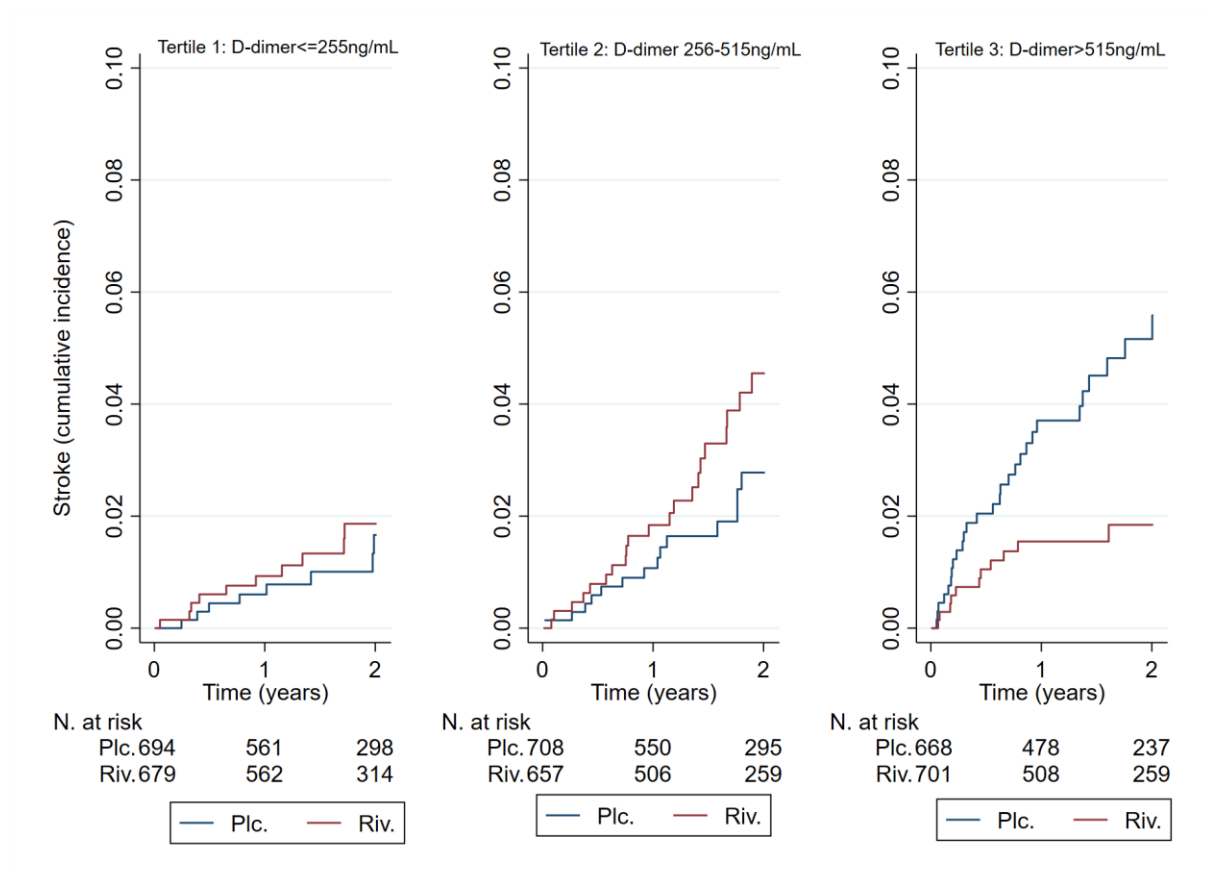


Legend: HR, hazard ratio. The primary outcome was a composite of myocardial infarction, stroke or all-cause death.

The background (“grey”) histogram represents the D-dimer concentration in ng/mL.

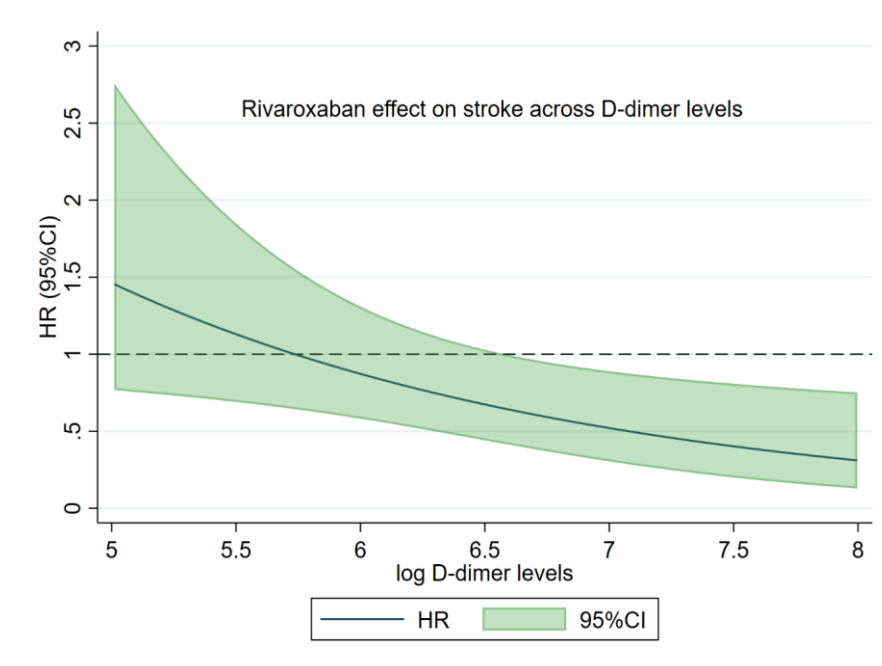
The vertical “dashed” bars mark the values for the D-dimer tertiles.

Figure 2. Treatment effect on stroke by tertiles of plasma D-dimer concentration



Legend: Plc., placebo; Riv., rivaroxaban.

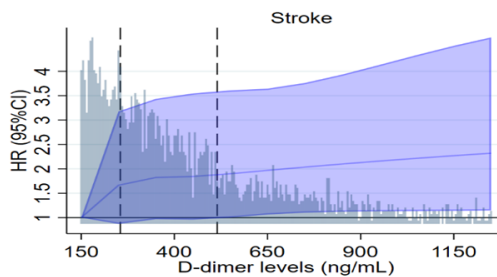
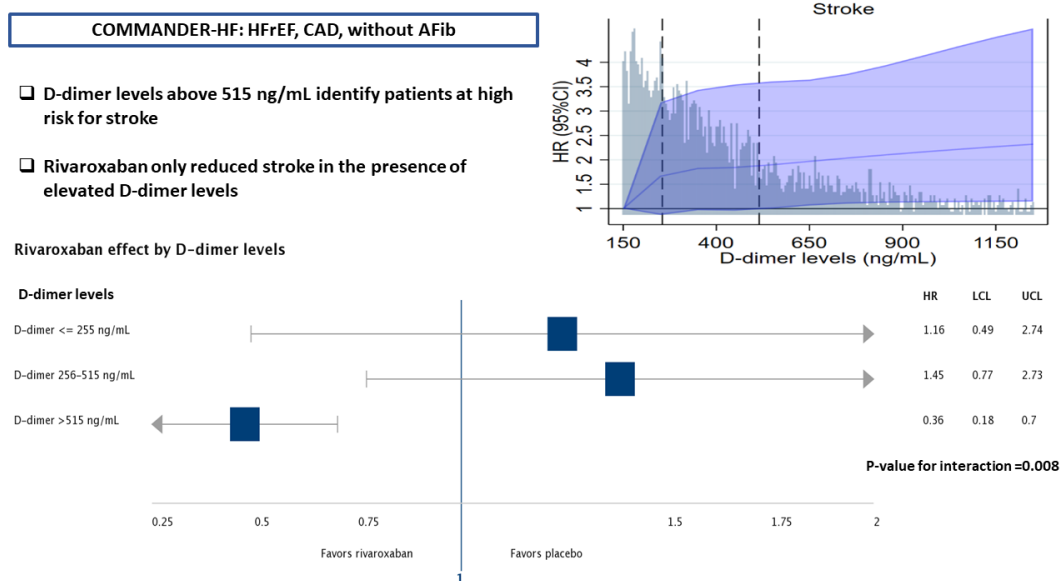
Figure 3. Association between the plasma concentration of D-dimer (log transformed) and the effect of rivaroxaban compared to placebo on the risk of stroke



Legend: HR, hazard ratio. P for interaction with continuous log D-dimer =0.012.

The D-dimer concentration was log transformed to meet the proportional hazards assumptions. To revert the natural log to the absolute number the exponential needs to be computed. A log D-dimer of 5.5, 6.0, 6.5, 7.0, and 7.5 is equal to a D-dimer concentration of 245, 403, 665, 1097 and 1808 ng/mL, respectively.

Graphical abstract. Stroke risk and effect of rivaroxaban in the COMMANDER-HF trial



Legend: HFrEF, heart failure with reduced ejection fraction; CAD, coronary artery disease; AFib, atrial fibrillation; HR, hazard ratio; LCL, lower limit of the 95% confidence interval; UCL, upper limit of the 95% confidence interval.