



Lipid composition of the cancer cell membrane

Wojciech Szlasa, Iga Zendran, Aleksandra Zalesińska, Mounir Tarek, Julita Kulbacka

► To cite this version:

Wojciech Szlasa, Iga Zendran, Aleksandra Zalesińska, Mounir Tarek, Julita Kulbacka. Lipid composition of the cancer cell membrane. *Journal of Bioenergetics and Biomembranes*, 2020, 52 (5), pp.321-342. 10.1007/s10863-020-09846-4 . hal-03089978

HAL Id: hal-03089978

<https://hal.univ-lorraine.fr/hal-03089978>

Submitted on 29 Dec 2020

HAL is a multi-disciplinary open access archive for the deposit and dissemination of scientific research documents, whether they are published or not. The documents may come from teaching and research institutions in France or abroad, or from public or private research centers.

L'archive ouverte pluridisciplinaire **HAL**, est destinée au dépôt et à la diffusion de documents scientifiques de niveau recherche, publiés ou non, émanant des établissements d'enseignement et de recherche français ou étrangers, des laboratoires publics ou privés.



Distributed under a Creative Commons Attribution 4.0 International License



Lipid composition of the cancer cell membrane

Wojciech Szlasa¹ · Iga Zendran¹ · Aleksandra Zalesińska¹ · Mounir Tarek² · Julita Kulbacka³

Received: 20 March 2020 / Accepted: 10 July 2020 / Published online: 26 July 2020
© The Author(s) 2020

Abstract

Cancer cell possesses numerous adaptations to resist the immune system response and chemotherapy. One of the most significant properties of the neoplastic cells is the altered lipid metabolism, and consequently, the abnormal cell membrane composition. Like in the case of phosphatidylcholine, these changes result in the modulation of certain enzymes and accumulation of energetic material, which could be used for a higher proliferation rate. The changes are so prominent, that some lipids, such as phosphatidylserines, could even be considered as the cancer biomarkers. Additionally, some changes of biophysical properties of cell membranes lead to the higher resistance to chemotherapy, and finally to the disturbances in signalling pathways. Namely, the increased levels of certain lipids, like for instance phosphatidylserine, lead to the attenuation of the immune system response. Also, changes in lipid saturation prevent the cells from demanding conditions of the microenvironment. Particularly interesting is the significance of cell membrane cholesterol content in the modulation of metastasis. This review paper discusses the roles of each lipid type in cancer physiology. The review combined theoretical data with clinical studies to show novel therapeutic options concerning the modulation of cell membranes in oncology.

Keywords Lipid membrane · Membrane composition · Cancer cells

Introduction

Cells in the body differ from each other to maintain the proper functioning of the tissues and organs, which they build. The lipid profile of the plasma membrane is a distinctive cell property and might be considered as characteristic for a specific cell type (Pradas 2018). Alterations arise from particular cell functions and are directly caused by increased production of various lipid components (Pradas 2018). The discussed differences include the variability of the polar head groups, as well as of the non-polar fatty acids (FA) hydrocarbon chains (Casares 2019). The head groups in the outer leaflet of the lipid bilayer can differ in simple organic compounds added to the phosphate group (choline, ethanolamine, serine). Non-polar fatty acid moieties of the inner leaflet vary in

hydrocarbon tail length and double bonds number or position (Rothman 1977).

The cell membrane is composed of lipids and proteins. It could either synthesise all the lipids, like hepatocytes or absorb the lipid fraction from lipoproteins circulating in the blood (Nagarajan 2019). The lipid content differs between tissues and depends on the physiological function of the cell. For instance, motile lymphocytes are characterised by low cholesterol level and high content of unsaturated lipids (Hoejholt et al., 2019). Conversely, non-motile tissues, that synthesise cholesterol are characterised by a high level of the steroid (Hoejholt et al., 2019). The lipid fraction of the plasmalemma could be divided into phosphatidic acid derivatives, glycolipids, sphingolipids and cholesterol (Fahy 2011). Phosphatidic acid could be substituted with inositol (phosphatidylinositol ~4 mol% of fibroblasts membrane), glycerol (phosphatidylglycerol ~0.5 mol%), serine (phosphatidylserine ~4 mol%), ethanolamine (phosphatidylethanolamine ~8 mol%) and choline (phosphatidylcholine ~20.25 mol%) (Fahy 2011; Hoejholt et al., 2019). Within phospholipids, the ether forms of the mentioned lipids can be distinguished, among which the most abundant are phosphatidylcholine ether (~0.25 mol%) and phosphatidylethanolamine ether (~7.75 mol%) (Fahy 2011; Hoejholt et al., 2019).

✉ Julita Kulbacka
julita.kulbacka@umed.wroc.pl

¹ Faculty of Medicine, Wrocław Medical University, Wrocław, Poland

² Université de Lorraine, CNRS, LPCT, F-54000 Nancy, France

³ Department of Molecular and Cellular Biology, Faculty of Pharmacy, Wrocław Medical University, Wrocław, Poland

Glycolipids are mostly composed of ceramide or phosphatidic acid conjugated with glycan group (Yu et al. 2010). Sphingolipids are the derivatives of sphingosine attached to choline/ethanolamine - forming sphingomyelin or glycans - forming cerebrosides (monosaccharide) or gangliosides (oligosaccharides) (Engelking and Engelking, 2015). Ceramide – sphingosine with fatty acid residue, is the apoptosis-inducing lipid signal (Van Blitterswijk et al. 2003). Cholesterol is the steroid compound, which content highly depends on the origin of the cell (Hoejholt et al., 2019; Pradas 2018). Namely, the motile cells, like lymphocytes are characterised by ~20 mol% plasma-cholesterol content and non-motile steroidogenic tissue cells by above 35 mol% content (Hoejholt et al., 2019). In general, cholesterol is responsible for the cell membrane rigidity and unsaturated phospholipids for the fluidity of the cell membrane (Gracià et al., 2010; Kakorin et al. 2005). Aside from the structural role, the lipids also provide the proper microenvironment for the membrane proteins to attach (Buschiazzi et al., 2013). Proteins could be either integral part of the membrane or could be anchored by the lipid chain to the lipid bilayer (GPI) (Brown and Wanek, 1992). There might be a distinguished group of proteins that selectively accumulate in the cholesterol and sphingomyelin-full microdomains of the membranes (lipid rafts), and proteins that localise in the non-raft region (Donatello et al., 2012). The proteins are organised next to each other, allowing their direct interactions (Sezgin 2017). Membrane proteins could be responsible for physical stabilisation of the membrane, acting as the receptors or being responsible for transport across the membrane – channels and transporters (Pike 2003; Podo et al., 2016). Some proteins are also involved in signal transduction or play an enzymatic role (Lane 2015; Stellacci et al. 2009). In most cases, interactions of the lipids with cholesterol or sphingomyelin in rafts is crucial for their proper functioning, thus the destabilisation of the rafts, lead to severe clinical complications (Björkholm 2014; Weiser 2014).

Cancer cell lipid composition differs from the non-malignant cell profile, but it also varies between malignancy types (Bernardes and Fialho, 2018; Casares 2019; Pakiet et al., 2019). Unfortunately, there is no specific lipid profile characteristic for cancer cells, that would differentiate them from non-malignant cells (Perrotti 2016). Moreover, cancer cell lipid composition may fluctuate in time depending on its physiological condition. For instance, cells preparing for metastasis, reduce membrane cholesterol content to increase the membrane fluidity and plasticity, which is essential for penetrating blood vessels (Zalba and ten Hagen, 2017). The disorganisation of lipids in the membrane can significantly disturb cell signalling (Lladó et al., 2014). Molecular dynamics studies showed that the loss of lipid asymmetry, observed in cancer cells, leads to a decrease in their permeability (Rivel et al. 2019).

In this review paper, we present a comprehensive overview of alterations in the lipid profile of the cell membrane

of cancer in correlation with its biological significance. Membrane characteristics of various malignancies, based on most recent lipidomic profiling studies are discussed as well.

Membrane phospholipids

Phosphatidic acid (PA)

Phosphatidic acid consists of diacylglycerol backbone bound to a phosphate group (Putta et al., 2016). Under physiological conditions, it accumulates on the cytoplasmic side of the plasma membrane due to the negative charge of the hydrophilic head group (Van Meer et al., 2008). Hydrophobic moieties are represented mostly by oleic, stearic and palmitic acids (Zech et al., 2009). The second binding position on the glycerol molecule is commonly occupied by an unsaturated fatty acid hydrocarbon chain (Zech et al., 2009). The content of phosphatidic acid physiologically does not exceed 1 mol% of membrane lipids (Zech et al., 2009). Nevertheless, due to its negatively-charged phosphate group, phosphatic acid plays a significant physiological function. Alterations in the level of membrane phosphatidic acid are regulated by changes in its metabolism (Fig. 1). Diacylglycerol kinase (DGK) and phospholipase D (PLD) are crucial enzymes involved in PA biosynthesis pathways (Liscovitch et al., 2000; Matsubara et al., 2006). Conversely, the degradation of PA is indirectly caused by phospholipase A (PLA) (Brindley 1996, 1998). DGK is regulated in a hormonal way. The stimulation by vascular endothelial growth factor (VEGF) leads to the activation of Src protein-tyrosine kinase (c-Src) and Abl protein-tyrosine kinase (c-Abl), leading to the enhance in DGK activity (Baldanzi et al. 2008; Baldanzi et al., 2004; Matsubara et al., 2012). This promotes DGK trafficking to the plasma membrane, which eventually induces PA biosynthesis (Purow 2015). DGK may be activated by pathogen-induced enhanced phospholipase (PLC) activity as well (Stith 2015). PA biosynthesis is also catalysed by PLD which activity is G-protein-dependent (Brandenburg 2014). The G-proteins' β and γ subunits ($G\beta\gamma$) function as negative regulators of PLD activity, whereas G12/G13 proteins' α subunits promote the activity via several other factors, such as pyruvate kinase (Pyk), phosphoinositide-3-kinase- γ (PI3K- γ), Rho guanine nucleotide-exchange factor (Rho GEF) and Rho factor (Hess et al. 1997; Lucas et al. 2002; Mariggio et al., 2006; Preiner et al., 2006). Changes in the activity of the above-mentioned proteins are associated with carcinogenesis. Interestingly, aside from cancer, the process of PLD activation is also involved in physiological processes, such as wound healing (Arun et al. 2013).

PLA is responsible for the conversion of PA into lysophospholipid, which results in its withdrawal from the cell membrane to the cytoplasm. PLA activity highly depends on the activity of membrane hormone receptors, such as 5-HT₂,

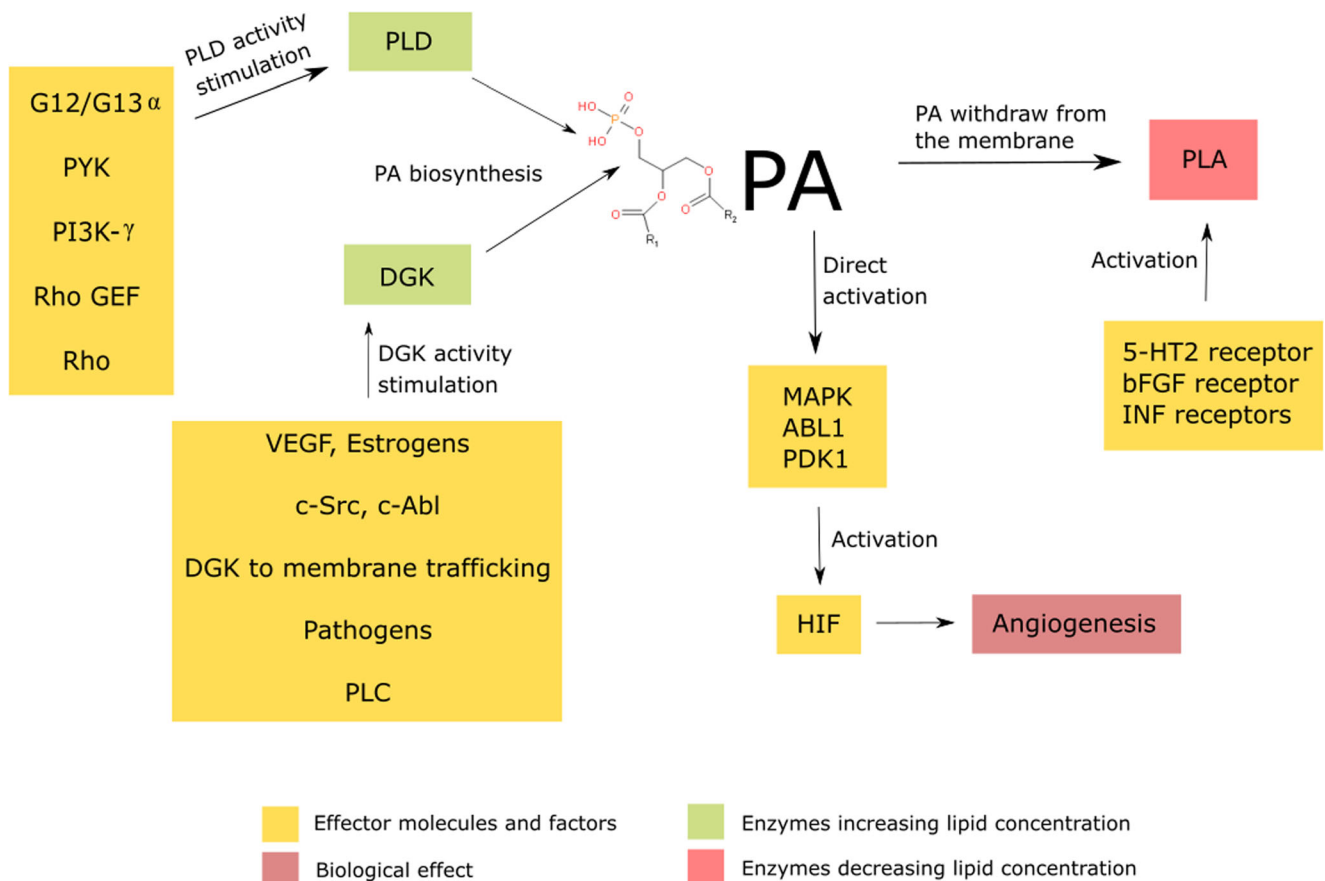


Fig. 1 Phosphatidic acid (PA) biosynthesis is being stimulated by VEGF, estrogens, c-Src and c-Abl. Pathogens, PLC and DGK trafficking towards cell membrane increase the PA biosynthesis. The lipid directly activates MAPK, ABL1 and PDK1 kinases, leading to the HIF activation and thus neovascularization. Conversely, factors stimulating PLD, like PYK, PI3K- γ , G12/G13 α – α subunits of heterotrimeric G proteins, PYK – pyruvate kinase, PI3K- γ – phosphoinositide 3-kinase γ , Rho – Ras homologous protein factor, DGK – diacylglycerol kinase, PLD – phospholipase D, VEGF – vascular

endothelial growth factor, c-Src – Proto-oncogene tyrosine-protein kinase Src, c-Abl – Abl protein-tyrosine kinase, PLC – phospholipase C, HIF – hypoxia-inducible factor, MAPK – mitogen-activated protein kinases, ABL1 – Abelson murine leukaemia viral oncogene homolog 1, PDK1 – Phosphoinositide-dependent kinase-1, G12/G13 α – α subunits of heterotrimeric G proteins, PYK – pyruvate kinase, PI3K- γ – phosphoinositide 3-kinase γ , Rho – Ras homologous protein factor, Rho GEF – Rho guanine exchanging factor;

bFGF and INF receptors (Goddard 1992; Kurrasch-Orbaugh 2003; Wu et al., 1994). bFGF activates PLA2 indirectly, by enhancing the release of PLA2-activating protein (Goddard 1992). With the stimulation of INF- $\alpha/\beta/\gamma$ and 5-HT2R, PLA activity increases as well (Kurrasch-Orbaugh 2003; Wu et al., 1994). Conversely, PLA2 deactivates in response to glutamine and oxidants (Huang et al., 2020; Lee 2015).

Elevated levels of PA are related to a series of changes to cancer cell metabolism. Primarily, it activates kinases, such as mitogen-activated protein kinase (MAPK), ABL tyrosine kinase 1 (ABL1) or 3-phosphoinositide-dependent protein kinase-1 (PDK1), implicated in intracellular stress signalling pathways (Lee et al. 2001; Plattner et al. 1999; Putta 2016). The aforementioned enzymes are also associated with cancer initiation and progression (Papageorgis et al. 2011; Papandreou et al. 2011; Reynaert et al. 1992). Moreover, the elevated level of PA enhances hypoxia-inducible factor 1- α (HIF1A) transcription which promotes angiogenesis and cancer cell proliferation (Han et al. 2014).

Phosphatidylinositol (PI)

Phosphatidylinositol (PI) family is a heterogeneous group of membrane lipids that differ from each other with regard to fatty acid moieties composition and the number of phosphate groups attached to polar myoinositol head group (Yeagle 2016). Phosphoinositides are the phosphorylated forms of phosphatidylinositol (Falkenburger et al., 2010). It is possible to distinguish phosphatidylinositol mono- and bisphosphates phosphorylated on the C3, C4 or C5 positions of the inositol ring, as well as triphosphate with phosphate groups in all three of the positions (Yeagle 2016). Phosphorylation is possible due to the specific activity of phosphatidylinositol phosphate kinases (PIPK) (Muftuoglu et al. 2016; Rajala and Anderson 2010). Conversely, dephosphorylation is catalysed by specific phosphatases (Hsu and Mao, 2015).

Plasma membrane level of PI is volatile and fluctuates between 5 and 12 mol% with regard to HT-29 colon cancer cell line and Jurkat cell line, respectively (Hoejholt et al., 2019; Zech

et al., 2009). Under physiological conditions, phosphoinositides are present in the outer leaflet of the membrane (Van Meer *et al.*, 2008). Most phosphoinositides contain stearic or oleic acid in the sn-1 carbon; arachidonic or oleic acid is bound by sn-2 carbon atom (Zech *et al.*, 2009). However, as a result of a high diversity of the phosphoinositol family and variety of their metabolic functions, it is impossible to fully comprehend the contribution of phosphoinositides to the lipid membrane profile.

Each of the phosphoinositides exhibits specific metabolic activity and affects different cell signalling pathways. Phosphatidylinositol-3-phosphate recruits proteins involved in membrane trafficking (Nascimbeni *et al.*, 2017). Phosphatidylinositol-4-phosphate is an important component of the membrane of the Golgi apparatus, recruiting proteins for the transport to the cell membrane (Hammond *et al.*, 2014). Conversely, phosphatidylinositol 5-phosphate participates in proliferation control by modulating both histones acetylates and deacetylases activity, as well as p53 acetylation (Poli *et al.*, 2019). The activity of the enzyme is performed via the inhibitor of growth 2 (ING2) (Poli *et al.*, 2019). Curiously, phosphatidylinositol monophosphates are involved in membrane curvature regulation (Gallop *et al.*, 2013).

Phosphatidylinositol bisphosphates (in particular phosphatidylinositol 4,5-bisphosphate) function as secondary messengers in many signalling pathways (Falkenburger *et al.*, 2010). Besides, phosphatidylinositol 4,5-bisphosphate binds proteins responsible for actin filaments organization, as well as stabilises G protein-coupled receptors, enhancing the effectiveness of various signalling pathways (C. Y. Wu *et al.*, 2014; Yen *et al.*, 2018). Additionally, phosphatidylinositol 4,5-bisphosphate promotes the membrane recruitment of G protein-coupled receptor kinase 2 (GRK2) - one of the G protein effector molecules (Pitcher *et al.*, 1996).

Phosphatidylinositol bisphosphates are not located only in the plasma membrane, but also in the endomembrane system. Phosphatidylinositol 3,5-bisphosphate may be found in the intracellular membranes, where it forms vacuole and alveoli, as well as participates in exocytosis (Li *et al.*, 2013). Therefore, the lipid is of particular importance for actively secreting cancer cells (King *et al.*, 2012). Considering the above, cancer cell secretion could be inhibited by targeting the phosphatidylinositol 3,5-bisphosphate biosynthesis pathway (Thapa *et al.*, 2016). Phosphatidylinositol bisphosphates are involved in ion channels regulation as well. (Mccartney *et al.*, 2014). By affecting the potassium channels, the resting membrane potential is modulated, serving as a proliferative signal. It is frequently found in cancer cells (Yang and Brackenbury, 2013).

Phosphatidylinositol (3,4,5)-trisphosphate accounts for numerous cellular signalling pathways activation, i.e. protein kinase B (AKT) pathway, therefore contributing to cell growth and survival regulation (Manna and Jain, 2015). Like other phosphoinositides, phosphatidylinositol (3,4,5)-trisphosphate participates in the recruitment of proteins with pleckstrin

homology domain (PH domain) (Milburn *et al.*, 2003). These include a large number of proliferation-related kinases, such as AKT, PDK1 or Bruton's tyrosine kinase (BTK) (Manna and Jain, 2015).

One of the most significant functions of phosphatidylinositol phosphates is the formation of GPI-anchor, thus allowing the motile protein-membrane interactions (Brown and Wanek, 1992). Phosphatidylinositol enables attachment of freely floating proteins to the lipid bilayer of the membrane through hydrophobic interactions within the non-polar membrane core (McLaughlin and Murray, 2005).

Phosphoinositides biosynthesis impairment is caused by specific kinase dysfunction. Contrarily, phosphatidylinositol accumulation occurs when PI specific phospholipase C (PI PLC) remains inactive or mutated (Cocco *et al.*, 2006). β and γ subunits of G-protein decreases the activity of PI PLC (fig. 2) (Rhee 2001).

Phosphatidylglycerol (PG)

Phosphatidylglycerol structure consists of phosphatidic acid bound to glycerol substituent (Yeagle 2016). The lipid is an anionic intermediate of the cardiolipin biosynthesis pathway (Yeagle 2016). Although phosphatidylglycerol comprises only about 1 mol% of the membrane phospholipids, it remains an important component of the cytosolic side of the plasma membrane due to its ionic properties (Zech *et al.*, 2009). Oleic and palmitic acid moieties are the most common glycerol substituents for phosphatidylglycerol (Zech *et al.*, 2009).

Certain studies have demonstrated that phosphatidylglycerol accounts for protein kinase C (PKC) activation and that it is involved in viral transcription (Bailey *et al.*, 2017; Hirai *et al.*, 1992; Murray and Fields, 1998). Moreover, phosphatidylglycerol participates in viral envelope formation (Sands and Lowlicht, 1976). At the tissue level, phosphatidylglycerol can inhibit phosphatidylcholine transfer between membranes, which results in membrane structure and function irregularities (Wirtz *et al.*, 1976). The importance of this compound during viral infections may suggest that its abnormal levels could be observed in virus-associated cancers such as cervical cancer (Preetha *et al.*, 2005). These fluctuations may lead to an increase in viral replication effectiveness and cell neoplasia (Fig. 3).

Phosphatidylserine (PS)

Phosphatidylserine under physiological pH is defined as negatively charged lipid, present in the intracellular layer of the cell membrane (Yeagle 2016). Its volume in the cell membrane is estimated at around 6 mol% (Zech *et al.*, 2009). Its degradation by decarboxylation merges with the biosynthesis process of phosphatidylethanolamine, which occurs in large quantities in the plasma membrane (Dawaliby *et al.*, 2016).

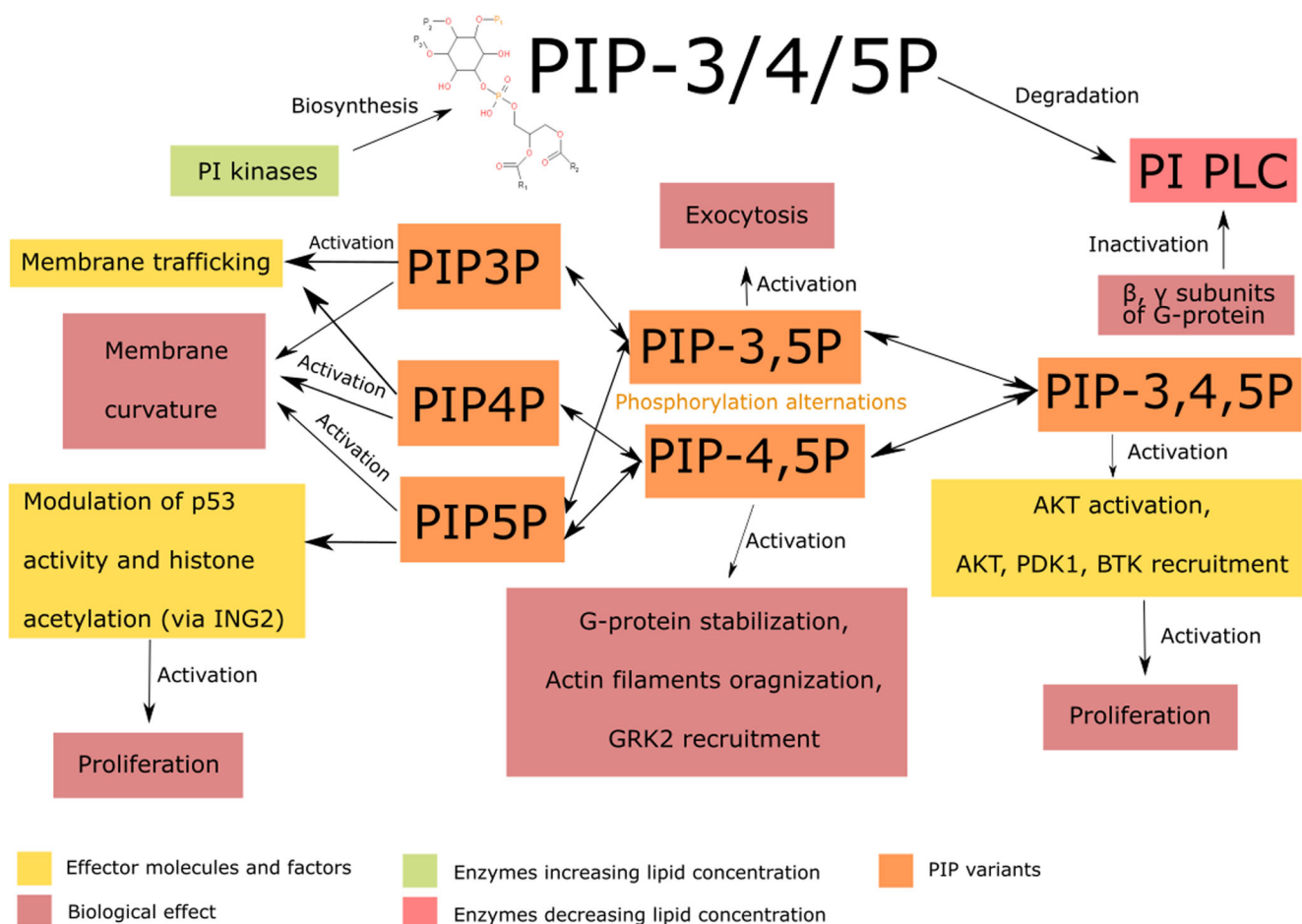


Fig. 2. Phosphoinositides (PI) metabolism and action scheme. Diphorylated phosphatidylinositol forms are responsible for cancer-related microsomes exocytosis, G-protein stabilization and constant activation, actin filaments prometastatic organization and GRK2 mediated proliferator signal transduction. Various mono-phosphorylated forms of phosphatidylinositol are responsible for membrane curvature modulation or induction of proliferation; PIP-3/4/5P - phosphatidylinositol 3/4/5-

phosphate, PIP-3,5P - phosphatidylinositol 3,5-diphosphate, PIP-4,5P - phosphatidylinositol 4,5-diphosphate, PIP-3,4,5P - phosphatidylinositol 3,4,5-trisphosphate, ING2 - inhibitor of growth protein 2, p53 - transformation-related protein 53, AKT - protein kinase B, PDK1 - protein 3-phosphoinositide-dependent protein kinase-1, BTK - Bruton's tyrosine kinase, GRK2 - G-protein-coupled receptor kinase 2; PI PLC - PI specific phospholipase C.

Like PE, PS is mostly composed of palmitic, oleic and stearic acids attached at the C1' glycerol position and residues of oleic acid in C2' position (Zech *et al.*, 2009).

The biosynthesis of phosphatidylserine is associated with the activity of two phosphatidylserine synthase isoforms (PSS I and II) (Stone and Vance, 2000). Those catalyze choline to serine substitution in phosphatidylcholine and ethanolamine to serine substitution in phosphatidylethanolamine, respectively (Ariketh *et al.*, 2008; Kuge & Nishijima 1997; Kuge *et al.*, 1997). The process of phosphatidylserine degradation, however, takes place thanks to the phosphatidylserine decarboxylase which catalyzes its decomposition to phosphatidylethanolamine (Fig. 4) (Vance and Steenbergen, 2005).

The apoptosis signalling was considered to be the major cellular role of phosphatidylserine, however, nowadays, some authors prove that PS does not induce apoptotic but rather necroptotic cell death type (Shlomovitz *et al.*, 2019). This happens when the phosphatidylserine passes to the outer layer of the

cell membrane due to the activity of an enzymatic protein called calcium ion-dependent flippase (Segawa and Nagata 2015). Physiologically, during apoptosis, phosphatidylserine is exposed on the cell surface, while in cancer cells, the process is present also during cellular oxidative stress (Belzile *et al.*, 2018). Due to this, phosphatidylserine excess may be considered as a tumour marker (Sharma and Kanwar, 2018).

Phosphatidylserine is exposed on the surface of cancer cells to avoid the autoimmune response of the organism (Birge *et al.*, 2016). It protects the cancer microenvironment from NK cells and other cytotoxic immune cells (Lankry *et al.*, 2013). Thus, cancer cells are no longer recognised as a threat to the immune system. Interestingly, numerous intracellular bacteria and viruses can induce similar effects, suggesting the convergent evolution of pathogens and cancers (Birge *et al.*, 2016). Currently, an attempt is made to target phosphatidylserine excessively exposing cells in cancer therapy (Belzile *et al.*, 2018; Budha *et al.*, 2018).

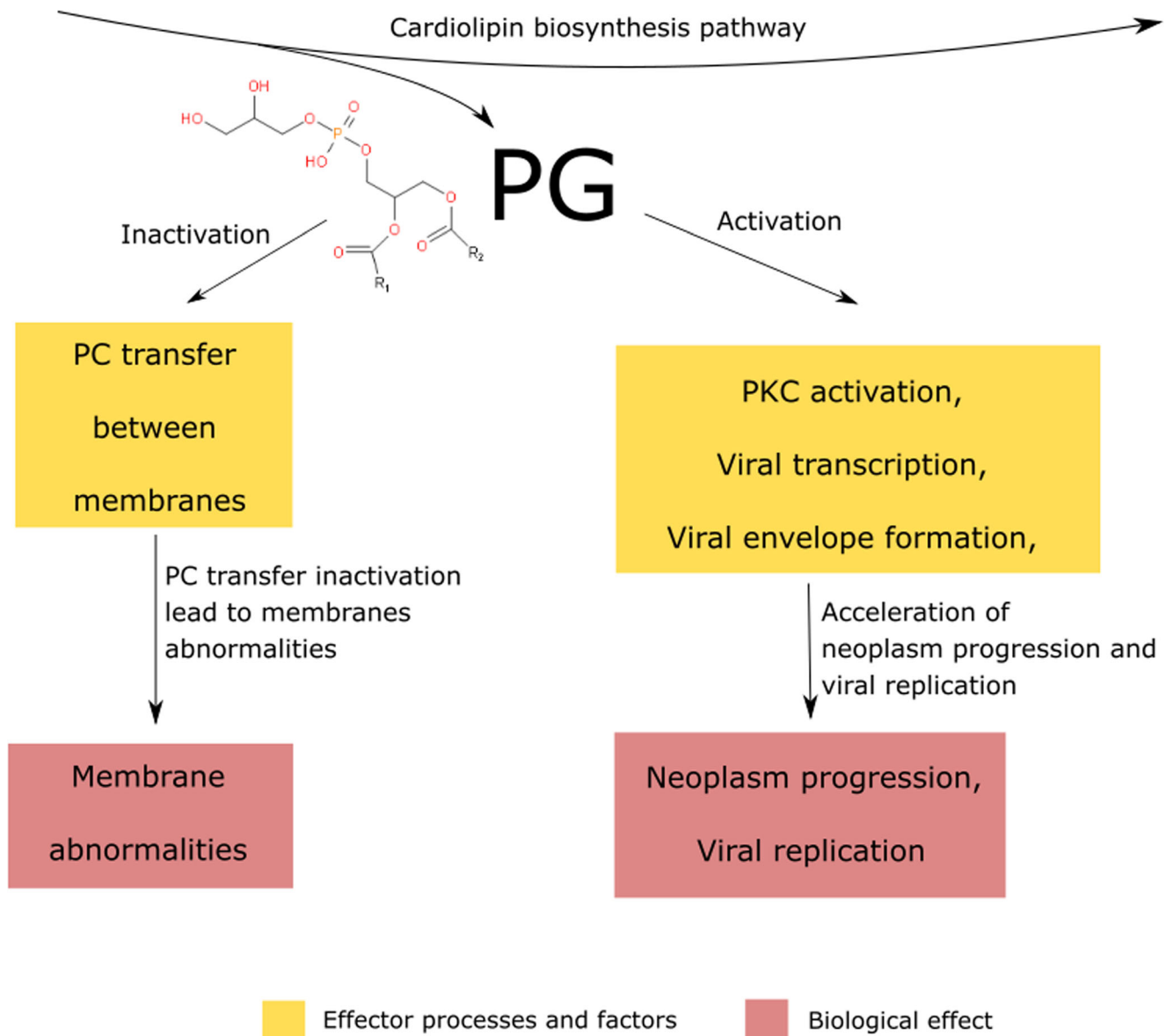


Fig. 3. Phosphatidylglycerol (PG) is being synthesized as the intermediate metabolite in cardiolipin biosynthesis pathway. The lipid inhibits PC transfer between membranes, leading to the cancerous membrane

abnormalities. PG activates PKC, viral transcription and envelope formation, leading to the neoplasm progression and increased ratio of viral replication; PC - phosphatidylcholine, PKC – protein kinase C;

Phosphatidylethanolamine (PE)

Phosphatidylethanolamine is the second most common (15–25 mol%) membrane phospholipid, occurring in ester or ether form (Zech *et al.*, 2009). The ether fraction prevails over the ester fraction under physiological conditions (Zech *et al.*, 2009). However, cells at a higher risk of disintegration of the plasma membrane tend to exhibit increased ether to ester ratio due to the greater thickness and denser packing of plasmalogens within the membranes (Rog and Koivuniemi, 2016). Due to its wedge shape, phosphatidylethanolamine is responsible for plasma membrane curvature modulation (Lladó *et al.*, 2014). Although phosphatidylethanolamine is

present on both sides of the plasma membrane, it exhibits the greatest concentration in the cytosolic leaflet of the lipid bilayer (Yeagle 2016). Interestingly, in numerous cancer cell types, phosphatidylethanolamine distribution is reversed with a preference for the outer leaflet of the plasma membrane (Liu *et al.*, 2017a).

Chemical analysis shows that palmitic, stearic and oleic acid chains are the most common fatty acids residues in phosphatidylethanolamine structure (Zech *et al.*, 2009). Phosphatidylethanolamine ester is a product of phosphatidylcholine demethylation by phosphatidylcholine N-methyltransferase and phosphatidylserine decarboxylation by phosphatidylserine decarboxylase (Bleijerveld *et al.*,

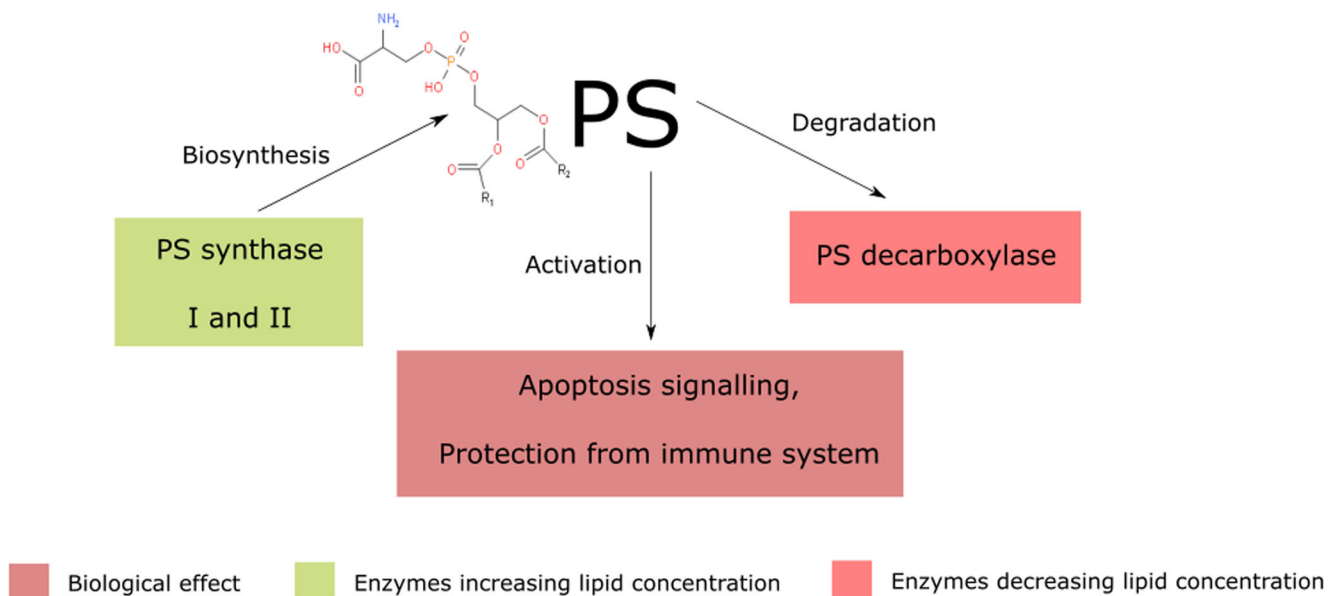


Fig. 4. Phosphatidylserine (PS) biosynthesis is being catalyzed by PS synthase I or II. The degradation is catalyzed by PD decarboxylase. The increased PS content in the cell membrane leads to cancer cell protection

from the immune response. However, the increase in PS in the outer membrane of the cell leads to the escalation of apoptosis signaling.

2007). Alternatively, it could be synthesised via cytidine diphosphate-ethanolamine pathway, using ethanolamine as a substrate (Bleijerveld *et al.*, 2007). Conversely, the ether form is synthesised by the attachment of 1,2-unsaturated fatty acid residue at the phosphatidic acid C2 position. Afterwards, the fatty acid moiety is being detached and replaced by ethanolamine (Honsho *et al.*, 2017).

Phosphatidylethanolamine (PE) is involved in various plasma membrane processes. First of all, phosphatidylethanolamine acts as a lipid chaperone that assists in the folding of membrane proteins (Bogdanov and Dowhan, 1998). Thus, its lack would result in the excess in unfolded proteins, responsible for the metabolic shift towards cancerous phenotype (Beloribi-Djefaflija *et al.*, 2016; Pustynnikov *et al.*, 2018). Accordingly, lipid profile abnormalities may affect membrane protein performance in cell signalling pathways, resulting in metabolism dysregulation and impaired response to extracellular signals (Kitajka *et al.*, 2002). PE has quite remarkable property which is the ability to promote protein conversion towards the toxic conformation (Supattapone 2012). Excessive accumulation of misfolded proteins triggers chronic endoplasmic reticulum (ER) stress, which may lead to cancer development (Patel and Witt, 2017).

Additionally, phosphatidylethanolamine acts as a positive regulator of autophagy which has a significant, positive influence on cell condition by preventing it from accumulating abnormal organelles (Rockenfeller *et al.*, 2015). Malfunctioning organelles accumulation and uncontrolled degradation are the underlying cause of carcinogenesis (Beloribi-Djefaflija *et al.*, 2016).

Phosphatidylethanolamine exerts its intracellular biological functions via the phosphatidylethanolamine-binding protein (PEBP) (Wang *et al.*, 2004). PEBP acts as an inhibitor of serine proteases, negatively regulating the apoptotic process (Rockenfeller *et al.*, 2015). Furthermore, increased phosphatidylethanolamine levels were observed during laboratory-induced ER stress (Shyu *et al.*, 2019).

As a part of the glycosylphosphatidylinositol (GPI) anchor, phosphatidylethanolamine is responsible for binding proteins to the membrane (Menon *et al.*, 1993; Signorell *et al.*, 2008). In this process, phosphatidylethanolamine is the donor of the phosphoethanolamine group that is attached either to the C-terminus of the protein or to the hydroxyl groups of the glycan-core mannose (Patel and Witt, 2017). The impairment of GPI-anchor biosynthesis results in improper stabilisation of the proteins in the membrane area (Krawitz *et al.*, 2013). Consequently, intracellular signalling pathways, biosynthesis and degradation reactions, as well as cell communication, may all be affected, leading to the cellular dysregulation and carcinogenesis (Fig. 5).

Unsaturated bonds in the hydrocarbon chains of phosphatidylethanolamine are susceptible to ROS-mediated oxidation (Iuchi *et al.*, 2019). The process is tightly connected with ferroptosis - a type of cell death, induced by the accumulation of lipid peroxides in the membrane (Conrad *et al.*, 2018). This results in regulated cell death, that lacks characteristic features of apoptosis, such as caspase activation (Du *et al.*, 2020; Xu *et al.*, 2019). Ferroptosis is thought to be the only type of the cell death from which cancer cells cannot escape, thus the researchers try to introduce it to cancer therapy (Bebber *et al.*, 2020; Xu *et al.*, 2019).

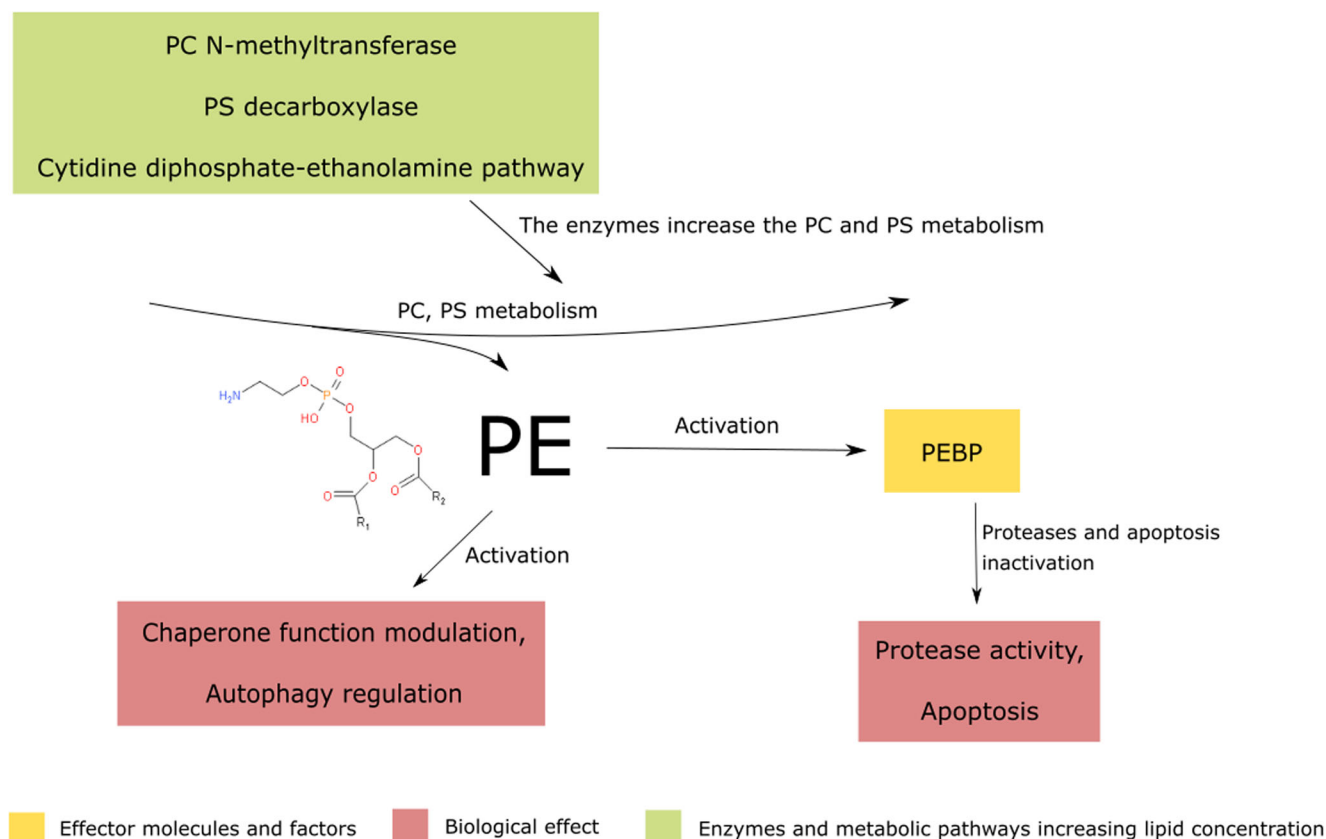


Fig. 5 Phosphatidylethanolamine (PE) is being synthesized by the induction of PC N-methyltransferase, PS decarboxylase and CDP-ethanolamine pathway. The increased PE content in cell membrane leads to the activation of PEBP, which desensitizes the cell from the

proapoptotic signals. Conversely, PE directly modulates the chaperone functions of the membrane-associated proteins. PC - phosphatidylcholine, PS - phosphatidylserine, PEBP – phosphatidylethanolamine binding protein.

Phosphatidylcholine (PC)

Phosphatidylcholine is a neutral membrane lipid, present in both ester and ether forms, the same as phosphatidylglycerol (Yeagle 2016). Although phosphatidylcholine is primarily a neutral lipid, it can also be referred to as a zwitterion, as it consists of a positively charged choline head group and a negatively charged phosphate group substituent (Yeagle 2016). Phosphatidylcholine is the most abundant compound of the lipid bilayer (Zech *et al.*, 2009). In comparison to phosphatidylethanolamine, it is mostly present in the outer leaflet of the plasma membrane and higher ester/ether form ratio (Zech *et al.*, 2009).

Considering common biosynthesis pathways, fatty acid residues of phosphatidylcholine are similar to those of phosphatidylethanolamine and phosphatidylserine (Yeagle 2016). Phosphatidylcholine is biosynthesised in the Kennedy pathway or phosphatidylethanolamine N-methyltransferase pathway (Gibellini and Smith, 2010). Impairment of phosphatidylcholine biosynthesis causes its membrane level to decrease simultaneously with an increase in phosphatidylethanolamine accumulation.

A wide range of cancers exhibits phosphatidylcholine metabolism alterations, caused mainly by choline kinase alpha (CHKA), phospholipase C (PLC) or phospholipase D (PLD) enhanced activity (Hu *et al.*, 2016). CHKA is responsible for the increase in phosphorylated choline level, serving as a substrate for cytidine diphosphate (CDP)-choline phosphocholine transferase in the CDP-choline pathway (Arlaukas *et al.*, 2016; Sola-Leyva *et al.*, 2019). Conversely, PLC catalyses the degradation of phosphatidylcholine with the release of diacylglycerol (DAG), promoting cellular anabolism via protein kinase A (PKA) (Oude Weernink *et al.* 2007; Siso-Nadal *et al.*, 2009). These metabolic shifts lead to the accumulation of energy-rich molecules, providing sources for cell proliferation. Carcinomas, such as breast cancer overexpress the above-mentioned enzymes (Fig. 6) (Podo *et al.*, 2016).

Lysophosphatidylcholine and lysophosphatidylethanolamine

Lysophospholipids are phospholipids without an acyl chain at the C2 carbon position. Although lysophospholipids are nearly detectable in the plasma membrane, the lipids are involved

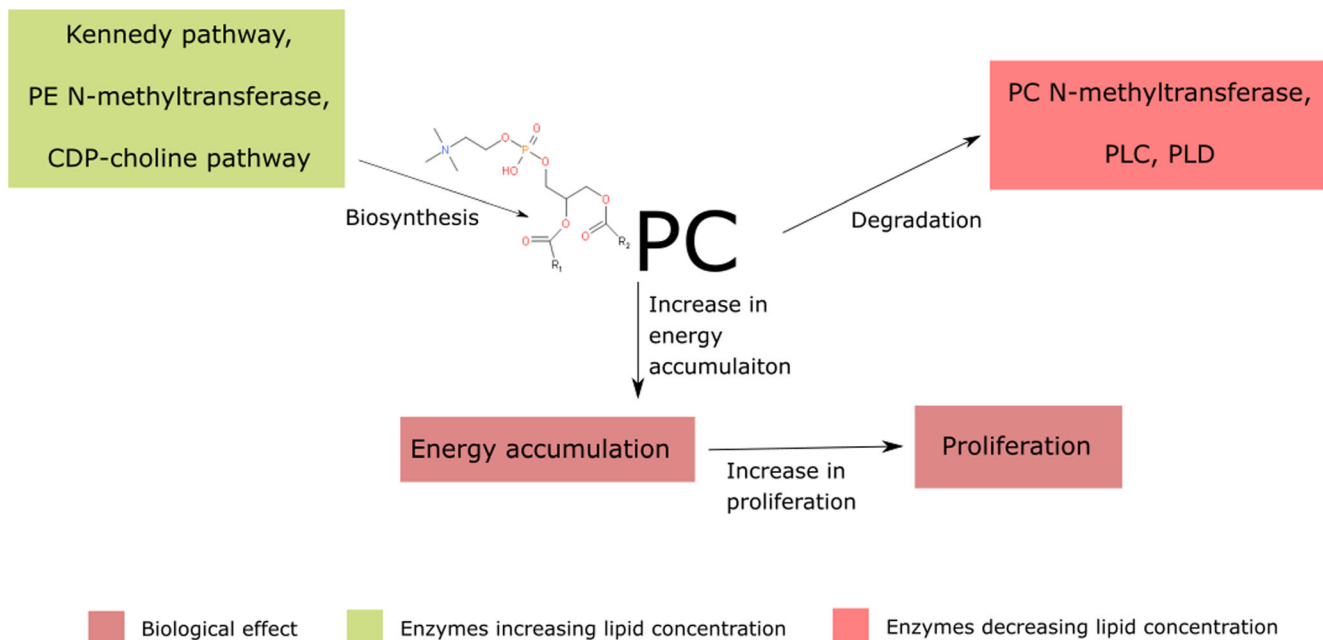


Fig. 6. Phosphatidylcholine (PC) content in the cell membrane increases by the induction of the Kennedy pathway, PE N-methyltransferase and CDP-choline pathway. Conversely, the induction of PC N-methyltransferase, PLC and PLD leads to PC degradation. PC is the easily accessible

energy for the cell which could be used for cancerous proliferation; PE - phosphatidylethanolamine, PLC - phosphatidylcholine, PLD - phospholipase D, CDP - cytidine diphosphate;

in maintaining the proper functioning of the bilayer (Van Meer *et al.*, 2008). The anionic compounds possess entirely different properties from the fully acylated equivalents. Lysophospholipids biosynthesis is mediated by enhanced activity of phospholipase A2 (PLA2), while their degradation is catalysed by other phospholipases, like PLC, PLD or PLA1 (phospholipase A1). The elevation of lysophosphatidylethanolamine plasma levels is triggered by the plasma PLA2 (Murakami *et al.*, 2015). PLA2 activity stimulation results in lysophosphatidylipids production, leading to the improper membrane curvature and thus its destabilisation (Henriksen *et al.*, 2010). Consequently, plasma membrane leakage may arise. Moreover, in this state, the membrane becomes more susceptible to membrane fusion, making the lysolipids responsible for cell exocytic capacity (Haraszti *et al.*, 2016; Hoen *et al.*, 2016; Leung *et al.*, 1998). The increase in lysophospholipid content is responsible for cancer growth, proliferation, and angiogenesis presumably by enhancing the extracellular phospholipids delivered to the tumour (Yang *et al.*, 2018). Curiously, the elevated level of the lysophospholipid in the tumour microenvironment was proved to be a useful biomarker of ovarian cancer, which could become a potent anti-cancer target in the future (Y. Xu 2018). Presented properties explain the minor contribution of lysophospholipids to the membrane lipid profile. To prevent disintegration, the cell can incorporate the lacking fatty acid chains by a specific sn-2-acyltransferase or relocate the lysophospholipids from the plasma membrane to the cytosol (Hishikawa *et al.*, 2008; Shindou *et al.*, 2009).

Membrane cholesterol

Cholesterol decreases membrane fluidity under physiological conditions (Ayee and Levitan, 2016). The sterol is present on both sides of the membrane, however more it is abundant in the outer leaflet (Liu *et al.*, 2017a). Due to its small molecular volume and excessive hydrophobic interactions with fatty acids, cholesterol increases membrane density (Gracià *et al.*, 2010). Various cell types exhibit different levels of membrane cholesterol, for instance, Jurkat cell line cholesterol remains about 20 mol%, while breast cancer (MDA-MB-231 cell line) levels reach about 35 mol% (Hoejholt *et al.*, 2019). Cholesterol content is directly associated with cell function. Plasma membrane cholesterol is either a product of intracellular biosynthesis or a derivative of plasma lipoproteins. Consequently, any enzyme deficiency in the cholesterol metabolism pathway may result in abnormalities of membrane fluidity (Fig. 7) (Gondré-Lewis *et al.*, 2006). Due to intracellular cholesterol biosynthesis, non-motile breast cancer cells exhibit increased levels of membrane sterols (Ehmsen *et al.*, 2019). Conversely, motile Jurkat cells require lower membrane cholesterol levels to increase plasma membrane flexibility, and thus to improve the ability to infiltrate various tissues.

Cholesterol content plays a key role in membrane fluidity regulation, which modulates the resistance to the chemotherapy and metastatic properties of cancer cells. Cancer cells preparing for metastasis tend to exhibit lower membrane cholesterol levels to maximise membrane fluidity (Yang and Chen

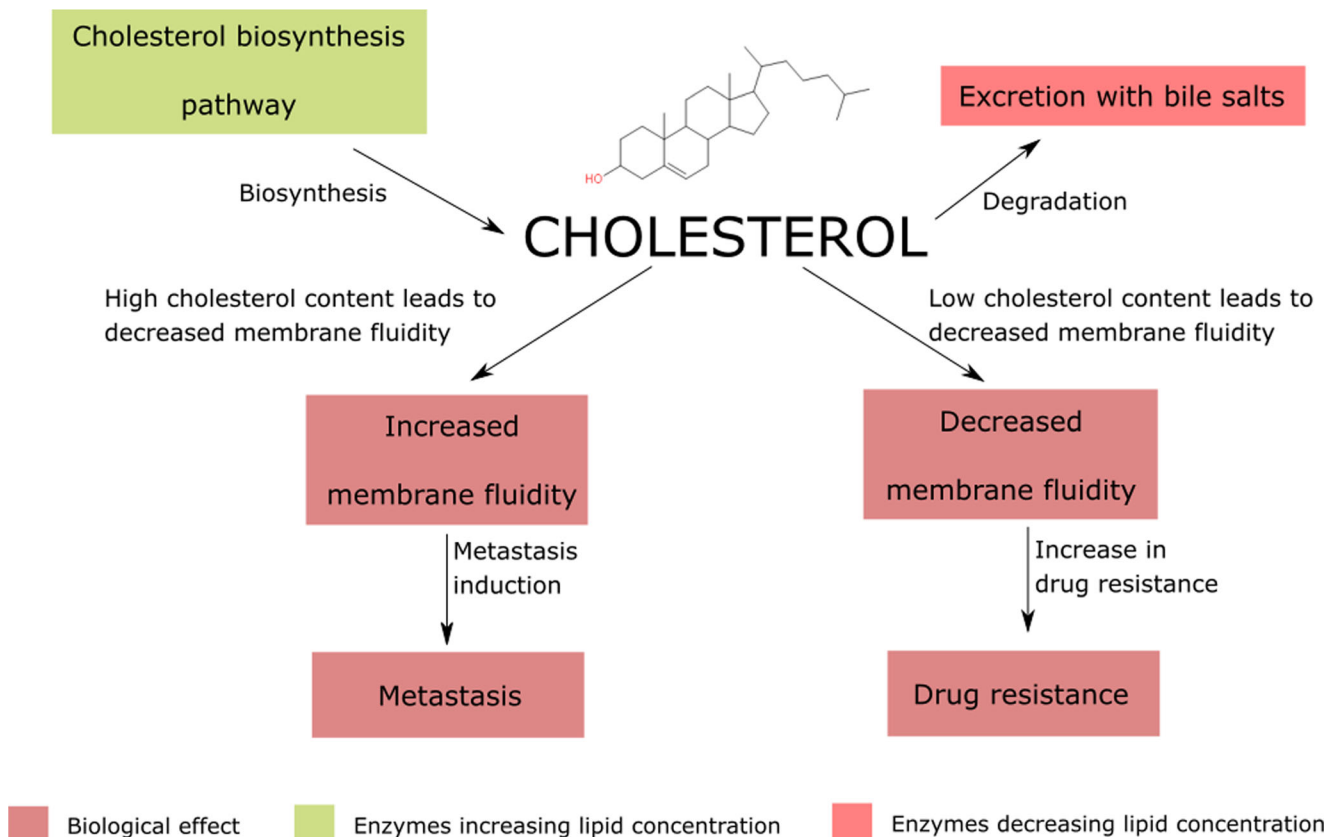


Figure 7. Cholesterol is the key regulator of the membrane's fluidity. The increased membrane rigidity leads to the drug resistance by modulation of xenobiotics transporters and the physical changes in the plasmalemma,

Conversely, the enhanced fluidity enables the cell to penetrate through the extracellular matrix and circulation.

2018; Zhao *et al.*, 2019). This feature enables a neoplastic cell to easily modulate its shape. Conversely, higher membrane cholesterol levels account for chemotherapy resistance (Hutchinson *et al.*, 2018). It has been proven that cells with higher membrane cholesterol concentration tend to exhibit greater drug resistance compared to those with lower cholesterol content (Alves *et al.*, 2016; Peetla *et al.*, 2013). This may arise from the plasma membrane sealing, by the reduction of empty spaces in the lipid bilayer. Interestingly, mitochondrial membranes stiffness seems to be involved in the resistance of neoplastic cells to death signal and the stimulation of the Warburg effect (Ribas *et al.*, 2016). Alterations in cholesterol content to enhance cell adaptation to the unfavourable environment are observed among steroidogenic cells, such as breast or ovarian carcinomas (Chimento *et al.*, 2019).

Cholesterol and sphingomyelin are involved in the formation of membrane lipid rafts (Pike 2004). Lipid rafts are plasma membrane regions with a highly organised lipid composition, which act as specific platforms for integral membrane proteins (IMP) concentration and stabilisation (Simons and Ehehalt, 2002). Flotillin and caveolin are considered as the peptide markers of the lipid rafts (Buschiazzo *et al.*, 2013). The effect of treatment could affect the structure of the raft and modulate the cancer cells, for instance, resveratrol shifts

flotillin from intracellular vesicles to the raft domains in plasmalemma (Gomes *et al.*, 2019). Other research studies indicate that the reduction of plasma cholesterol content results in lipid raft destabilisation and dysfunction of the cells (Buschiazzo *et al.*, 2013). Other lipids are important in raft formation as well. In this case, phospholipid headgroups play a minor role, contrary to fatty acid residues (Fan *et al.*, 2010; Hancock 2006). A degree of fatty acid unsaturation and its chain length are of great importance for raft formation process (Fan *et al.*, 2010). Lipid rafts provide the environment for proteins' oligomerization and enable interactions with other peptides (Hancock 2006). The high-density regions composed of cholesterol and sphingomyelin formate, constitute a proper microenvironment for proteins, which directly spans the membrane (i.e. ion channels, CD95 death receptor, T and B-cell receptors) and for proteins anchored via GPI, like alkaline phosphatase or DAF (decay-accelerating factor) (Brown and Waneck, 1992; Gajate and Mollinedo, 2015; Zech *et al.*, 2009). Rafts also supply the ions channels with cholesterol, which are essential for their proper functioning.

Since the domains are involved in a critical cell cycle processes, such as the control of cell death and survival, they are involved in carcinogenesis (Gajate and Mollinedo, 2015; George and Wu, 2012; Groux-Degroote *et al.*, 2017;

Zhuang *et al.*, 2005). Molecular studies showed that the disintegration of cholesterol microdomains could be achieved by various lipid-like molecules, like erucylphosphocholine or even lysophospholipids (Wnętrzak *et al.*, 2015). The agents lead to the membrane fluidisation and destabilisation of cancer-associated markers (Wnętrzak *et al.*, 2015). Low cholesterol content results in the improper formation of rafts, defective functioning of adhesion molecules and eventually to metastases (Buschiazzi *et al.*, 2013). Indeed, tumour cells regulate the cholesterol content to allow the migration and decrease the membrane permeability for chemotherapeutics (Mollinedo and Gajate, 2020). For instance, melanoma migration is regulated by changes in lipid rafts (Wang *et al.*, 2013). By Src-RhoA-Rock pathway, cancer cells modulate the actin cytoskeleton, allowing intravasation and migration in the extracellular matrix (Wang *et al.*, 2013). Conversely, as far as the breast cancer cells are concerned, association to the lipid rafts restricts the interaction between CD44 and ezrin (Donatello *et al.*, 2012). In non-invasive cells, CD44 is localised in lipid rafts and ezrin aside from the non-raft regions (Donatello *et al.*, 2012). After the induction of migration, both proteins interact, leading to the metastasis (Donatello *et al.*, 2012).

Membrane sphingolipids

Sphingolipids are heterogeneous classes of lipids, all of which contain a sphingosine backbone (Van Meer 2005). Sphingolipids include ceramides (sphingosine and fatty acid residue), sphingomyelins (choline or ethanolamine group esterified with a 1-phosphate group of sphingosine) cerebrosides (glucose or galactose attached to C1 of ceramide) and gangliosides (at least one sialic acid molecule attached to the sugar chain of glycolipid). Each type of the sphingolipids is discussed in the following sections.

Ceramide and its derivatives

Under physiological conditions, ceramide content in the membrane is negligible, not exceeding 0.5 mol% (Zech *et al.*, 2009). Low concentration is a result of ceramide-mediated apoptosis induction (Woodcock 2006). The proapoptotic ceramide pathway begins with neutral sphingomyelinase activation by the factor associated with neutral sphingomyelinase (FAN), that is dependent on the signal from CD95 receptor death domain (DD) (Van Blitterswijk *et al.*, 2003). Ceramide, which is a product of the sphingomyelinase-catalysed reaction, induces cytochrome c release from mitochondria and consequently activates the apoptotic pathway (Mullen and Obeid, 2012). Increased ceramide membrane levels result in inhibition of cancer cell proliferation and proper regulation of the cell cycle (Ogretmen 2017). Therefore, the increased ceramide biosynthesis appears to be harmless, or even has

therapeutic potential (Woodcock 2006). Some novel strategies of cancer therapies aim to overexpress the ceramide biosynthetic pathway enzymes and eventually lead to programmed cancer cell death (Moro *et al.*, 2019). Enzymes utilised in cancer treatment include serine C-palmitoyl transferase (CPT) - sensitising breast cancer cells to chemotherapy (Wang *et al.*, 2002), ceramide synthase 1 (CERS1) - inducing mitophagy and acute myeloid leukaemia (AML) cell death (Dany *et al.*, 2016), ceramide synthase 6 (CERS6) - modulating caspase activation in head and neck cancer (White-Gilbertson *et al.*, 2009), dihydroceramide desaturase (DES) - leading to cell cycle arrest in neuroblastoma cells (Kravetska *et al.*, 2007), acidic sphingomyelinase (ASMase) - inducing lymphoblasts apoptosis (Santana *et al.*, 1996) and neutral sphingomyelinase (NSMase) - utilised in breast cancer therapy (Hwang *et al.*, 2015).

Malfunction or overexpression of enzymes involved in the ceramide degradation pathway results in cell cycle dysregulation and apoptosis impairment, which could eventually lead to carcinogenesis (Huang *et al.* 2011). Increased activity of enzymes catalysing pro-malignant sphingolipids formation reactions, such as glutamate-cysteine ligase (GCL) (Li *et al.* 2014), spermine synthase (SMS) (Massaro *et al.*, 2017), sphingosine kinase (SphK) (Hatoum *et al.*, 2017) and ceramide kinase (CERK) (Payne *et al.*, 2014) results in the apoptosis escape and cancer progression. Excessive transport of ceramide from the endoplasmic reticulum to the Golgi apparatus is considered as pro-cancerous by separating the antiapoptotic lipid from the cell membrane (Hanada 2010; Liu *et al.*, 2017b).

Plasma membrane bilayer contains various amounts of sphingomyelin, oscillating between 3 mol% in Jurkat, HT-29, MDA-MB-231 and fibroblast cell lines, as well as up to 15 mol% in nerve cells (Hoejholt *et al.*, 2019; Slotte and Ramstedt, 2007). Sphingomyelin is found on both sides of the membrane, with a higher concentration in the outer leaflet (Van Meer *et al.*, 2008). Most lipids consist of a sphingosine chain with the oleic acid residue attached (Hoejholt *et al.*, 2019). Sphingomyelin biosynthesis involves sphinganine synthesis, further acylation to dihydroceramide and eventually dehydrogenation (Jiang *et al.*, 2009). Conversely, sphingomyelin breakdown results in ceramide release.

Sphingomyelin induces an increase in resistance to chemotherapy, by P-glycoprotein trafficking to plasma membrane lipid rafts and the increase in cell membrane integrity (Modok *et al.*, 2004; Slotte and Ramstedt, 2007). Besides, the increased level of sphingomyelin act as a tumour-promoting factor (Zheng *et al.*, 2019). This pro-malignant activity arises from the decrease of pro-apoptotic ceramide (Woodcock 2006). Moreover, sphingomyelin has been identified as a negative regulator of autophagy by impairing autophagosomes organisation, normally modulated by autophagy-related protein 9A (ATG9A) (Fig. 8) (Corcelle-Termeau *et al.*, 2016).

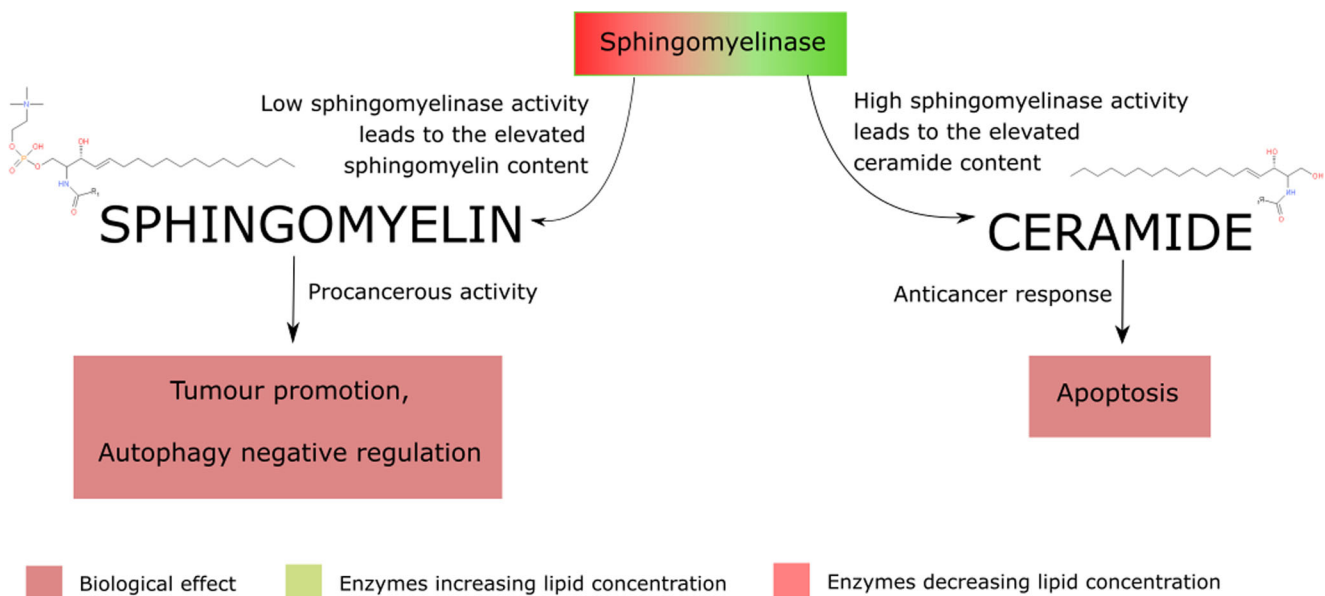


Fig. 8. Sphingomyelin and ceramide metabolism is regulated by sphingomyelinase activity. The catalysis of choline detachment leads to cell apoptosis. However, in cancer cells, the sphingomyelinase activity is

upregulated and results in the sphingomyelin extensive accumulation. The lipid enables tumor progression and autophagy negative regulation.

Sphingosine 1-phosphate (S1P) is considered to be a tumour-promoting factor, as its elevated level promote proliferation, therapy resistance, and metastatic spread (Guo *et al.*, 2015; Tsuchida *et al.*, 2017). It is formed by sphingosine phosphorylation, catalysed by two isoforms of sphingosine kinase - intracellular (SPHK1) and nuclear (SPHK2) (Hatoum *et al.*, 2017). S1P acts either on a receptor-dependent (S1PR) or on a fully independent pathway (Park *et al.*, 2013). The independent pathway involves S1P interaction with histone deacetylase (HDAC) resulting in enhanced activity of human telomerase reverse transcriptase (hTERT), finally leading to infinite cell proliferation (Panneer Selvam *et al.*, 2015). Moreover, angiogenesis may be stimulated by the interaction of S1P with peroxisome proliferator-activated receptor- γ (PPAR γ) (Parham *et al.*, 2015). Eventually, S1P accelerates cell proliferation by activating the NF- κ B factor on both TNFR-associated factor 2 (TRAF2) and receptor-interacting protein 1 (RIPK1) pathways (Alvarez *et al.*, 2010; Park *et al.*, 2015). Besides, S1P- inhibits caspase-3 and protein phosphatase 2A (PP2A) as well as induces autophagy (Fig. 9) (Watters *et al.*, 2011).

Glycosphingolipids

Glycosphingolipids could be divided into two general categories: cerebroside with a single monosaccharide residue, and gangliosides with at least one sialic acid residue attached to the ceramide (Yeagle 2016). Glycolipids are localised in the outer leaflet of the plasma membrane, with the glycan chains exposed to the extracellular space (Van Meer *et al.*, 2008). Depending on the sugar residue attached, cerebroside could be further categorised as gluco- and galactocerebroside. A high concentration of cerebroside in the plasma membrane may act

as a metastatic and antiapoptotic signal (Liu *et al.*, 2013). Cells with elevated cerebroside level tend to be more chemotherapy-resistant than those with physiological cerebroside content, due to the induction of p53 gene expression (Hosain *et al.*, 2016). The chemotherapy resistance mechanism involves direct activation of c-Src (Proto-oncogene tyrosine-protein kinase) and β -catenin signalling pathway by cell membrane cerebroside (Liu *et al.*, 2010). This results in upregulation of multidrug resistance gene 1 (MDR1) expression as well (Ghandadi *et al.*, 2019). Cerebroside levels rise in numerous cancer cell lines, as an effect of glucosyl- and galactosyltransferase overexpression (Chuang *et al.*, 2019; Zhu *et al.*, 2005).

In non-malignant human cells, gangliosides consist of acetyl (NeuAc) or glycol group (NeuGc) attached to the neuraminic acid by an N-glycosidic bond (Asakawa *et al.*, 2006; Chammas *et al.*, 1999). The acetyl substituent is predominant under physiological conditions (Asakawa *et al.*, 2006; Chammas *et al.*, 1999). However, cancer cells produce an excess of gangliosides that contain glycol groups (Krengel and Bousquet, 2014). The changes in gangliosides number and structure occur also during embryogenesis (Breimer *et al.*, 2017).

In general, a greater number of gangliosides in the lipid bilayer is associated with enhanced invasive properties of cancer (Groux-Degroote *et al.*, 2017). Studies indicate that melanoma cells exhibit significantly higher ganglioside GD3 levels in comparison to non-malignant melanocytes (Pukel *et al.*, 1982). Other neoplastic cells also express specific gangliosides, such as GD2, on the surface of leukemic T-cells (Furukawa *et al.*, 1993). Overexpression of neoplastic gangliosides also results in tumour-specific immune response inhibition via interaction with Siglec-7 protein (Kawasaki *et al.*, 2010). Moreover, cancer cells tend to release large amounts of gangliosides to the neoplastic

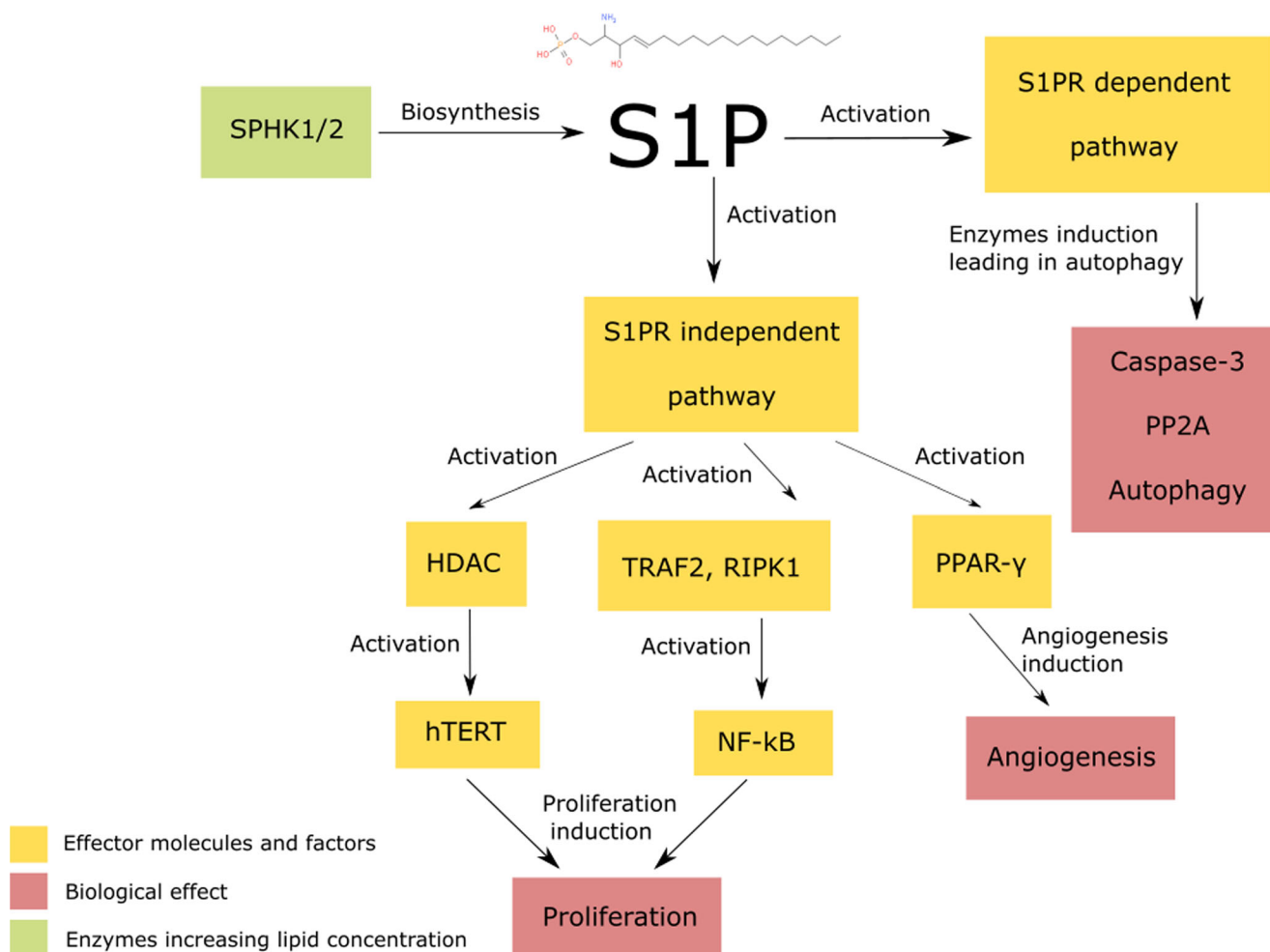


Fig. 9 Sphingosine-1-phosphate (S1P) acts in both S1PR dependent and independent pathways. The induction of S1PR dependent pathway leads to the autophagy induction. The S1PR independent pathway activity results in increased angiogenesis and cancer proliferation; SPHK1/2 – sphingosine-1-phosphate kinase 1/2, S1PR – sphingosine-1-phosphate

receptor, HDAC – histone deacetylase, hTERT – human telomerase reverse transcriptase, TRAF2 – TNF receptor-associated factor 2, RIPK1 – receptor-interacting serine/threonine-protein kinase 1, NF-kB – nuclear factor kB, PPAR-γ – peroxisome proliferator-activated receptor γ, S1PR – sphingosine-1-phosphate receptor, PP2A – protein phosphatase 2A;

microenvironment (Chung *et al.*, 2017). Interactions with ganglioside receptors on the surface are crucial for vascular endothelial growth factor (VEGF) signalling pathway activation, resulting in angiogenesis (Lang *et al.*, 2001). Mutations or altered expression of genes involved in ganglioside biosynthetic pathways result in ganglioside membrane levels abnormalities. Despite the great importance of gangliosides and cerebroside in cancer development, it should be remembered that the lipids act also as antigens, and therefore their role may be much more complex (Chung *et al.*, 2017).

Relationship between degree of unsaturation and neoplasia

Fatty acid residues may differ from one another by the degree of unsaturation, as well as the location of double bonds (Rodwell *et al.*, 2015). Bearing in mind that under

physiological conditions fatty acids contain double bonds in the cis configuration, unsaturated lipids tend to increase the volume of the plasma membrane, simultaneously decreasing its density (Ollila *et al.*, 2007). Moreover, a high content of unsaturated fatty acids, makes the cell membranes more susceptible to lipid peroxidation (Porter *et al.*, 1995).

Interestingly, plasma membrane in cancer cells exhibits a different degree of unsaturation than that in non-malignant cells (Li *et al.*, 2017; Mason *et al.*, 2012; Peck *et al.*, 2016). To protect plasma membrane lipids peroxidation, cancer cells maintain a lower degree of unsaturation (Beloribi-Djefafli *et al.*, 2016; Peck *et al.*, 2016). Moreover, a higher concentration of saturated fatty acids in the lipid bilayer results in an increased stability of lipid raft domains, resulting in greater protein binding capacity of the membrane (Beloribi-Djefafli *et al.*, 2016).

Nevertheless, not all cancerous cells show increased saturated or monounsaturated fatty acids content. Cancer stem cells (CSCs) usually exhibit a higher degree of unsaturation as compared to non-malignant cells (Li *et al.*, 2017). Nuclear factor κ B (NF- κ B), directly regulates the expression of CSCs lipid desaturase, which catalyses the conversion of saturated into unsaturated fatty acids with cytochrome b5/NADH cytochrome b5 reductase electron transfer system support (Mukherjee *et al.*, 2017). Polyunsaturated fatty acids promote the expression of CSCs markers, aldehyde dehydrogenase (ALDH) and CD133 among cancer cells with CSCs phenotype (Yi *et al.*, 2018).

Lipid membranes as a therapeutic target

Nowadays, the lipid content of the cancer cell is pharmacologically modulated, as a part of clinical management (Luo *et al.*, 2018). The regulation of lipid metabolism is especially effective among carcinomas with highly altered lipid content. The therapy does not only concern the plasma membrane lipids, but also the intracellular membranes, such as the endoplasmic reticulum or Golgi apparatus (Shyu *et al.*, 2018). Drugs used in lipid-targeting therapies could be divided into two groups.

The first group consists of drugs that specifically affect the lipid or its metabolism (Cheng *et al.*, 2016; Tan *et al.*, 2017). Due to the fact that the targeted lipids build all the cells in the body, the therapy has to be very specific affecting only a certain lipid and carried out in elevated concentrations range (Tan *et al.*, 2017). In this field researchers particularly focus on the design and production of very specific proteins or small-molecule compounds to omit the severe systemic complications of the therapies (Srivatsav *et al.* 2018; Bernardes and Fialho, 2018; Yan Lim and Yee Kwan, 2018). As discussed before, the therapy results in the changes in the cell membranes properties, resulting in carcinogenesis, metastases and drug resistance decrease (Frimpong 2019; Zalba and ten Hagen, 2017). To maintain the desired specificity during chemotherapy, it is required to use drugs that target certain lipid metabolism (Cheng *et al.*, 2016; Tan *et al.*, 2017). Such an approach was effectively applied for carcinomas, lipid metabolism dysregulation diseases, such as ovarian cancer, sarcomas or even pancreatic endocrine tumours (Manara *et al.*, 2010; Soler *et al.*, 2016; Xie *et al.*, 2017).

The second group of lipid-lowering drugs, which have been proved to have anticancer properties are statins (i.e. Lovastatin) (Peng *et al.*, 2017). The mechanism statins action involves the disruption of cholesterol biosynthesis, decrease of cell proliferation and survival (Martirosyan *et al.*, 2010). From the histological point of view, the changes being a consequence of the therapy include a lack of lipid droplets in the affected cells (Gbelcová *et al.*, 2013). This approach was effectively used among carcinomas with high membrane cholesterol content, such as breast cancer (Borgquist *et al.*, 2018). Interestingly, clinical metanalysis of cancer incidence among patients treated with statins showed an increased probability of high-grade prostate cancer diagnosis

(Nordström *et al.*, 2015). Moreover, Shepherd *et al.* proved that patients treated with pravastatin were more frequently diagnosed with cancer in comparison to the placebo-treated group (Shepherd *et al.*, 2002). Aside from the pro-cancerous effects, statin use in chemotherapy meets obstacles, such as the use of high doses (500 times higher than standard hypercholesterolemia treatment) of the drug (Dulak and Józkwicz, 2005). The high anticancer concentration of the drug leads to the statin-induced rhabdomyolysis (Hu *et al.*, 2012). Therefore, statins could be used as adjuvant therapy for cancer treatment in the mevalonate pathway targeting (Mo *et al.*, 2019). The blockage of mevalonic acid synthesis leads to the deactivation of isoprenoid-composed G-protein-coupled proteins, such as Ras, Rho and Rac (Vallianou *et al.*, 2014). Additionally, statins could enhance the effects of the immune response towards cancer by increasing the antigen presentation by dendritic cells (Bird 2018).

The most current management aims to block the uptake, intracellular lipolysis and utilisation of lipids (Diao and Lin, 2019). This approach was introduced, when researchers found that cancer cells are characterised by high energy demand for proliferation (Long *et al.*, 2018). Overexpression of lipid uptake receptors (like CD36) in the tumour came out to be an effective target to suppress cancer growth and progression (Pascual *et al.*, 2017). A distinction of the lipid composition of the cell membrane in various types of cancer cells might be useful in the planning of anticancer strategy. The exemplary profiles according to the available data are presented in Table 1.

Table 1 Cell membrane lipid composition based on the lipidomic studies of the cell membrane of various cell lines

Lipid [mol%]	HT-29	MDA-MB231	HDF-n	Jurkat
PA	0.5	0.5	0.5	0.3
PI	4	4	4	12.5
PG	0.5	0.5	0.5	0.3
PS	4	4	4	7.5
PE	2	4	8	14
PC	9.5	13	20.25	40
PE eter	7.25	10.5	7.75	3
PC eter	16.75	1.5	0.25	3.4
SM	2.5	8.3	5.83	4
DAG	45.8	51.7	45.8	0.5
Chol				23
HexCer				0.1
diHexCer				0.01

HT-29 – colon cancer, MDA-MB231 – breast cancer, HDF-n – human dermal fibroblasts, Jurkat – T-cell leukaemia. mol% values correspond to the approximate values of each lipid. PA – phosphatidic acid, PI – phosphatidylinositol, PG – phosphatidylglycerol, PS – phosphatidylserine, PE – phosphatidylethanolamine, PC – phosphatidylcholine, SM – sphingomyelin, DAG – diacylglycerol, Chol – cholesterol, HexCer – hexosylceramides, diHexCer – dihexosylceramides

Presented data, show an increased PI level in Jurkat cell line. The extent of PI leads to cancer cells proliferation and changes in G-protein mediated signalling pathways. The hypothetical therapy approach would include Ras or Rho inhibitors. Indeed, molecular and clinical data, prove the high contribution of Ras in leukaemia (Kindler *et al.*, 2008; Pasmant *et al.*, 2015). Moreover, Ras inhibitor - farnesyl thiosalicylic acid was successfully used to sensitise the T-cell leukemic cells to apoptosis signal (Stoppa *et al.*, 2012). According to the data presented in Table 1, PC, PS and PE depleting agents could potentially be useful to target leukaemia cells. In the case of PS, fingolimod (FTY720) was successfully used to induce phosphatidylserine externalisation, thus leading to cell death (Young *et al.*, 2019). No clinical data could be found in the field of PC or PE depletion, however, in vitro research showed the potency of trans,trans-farnesol (PC uptake inhibitor) in death induction in leukemic cells (Melnikovych *et al.*, 1992). Conversely, the excess of cholesterol was proved to be a potential therapeutic target in breast cancer treatment (Li *et al.*, 2006). On the other hand, its depletion together with metformin and methyl- β -cyclodextrin resulted in the reduced migration and cell death induction (Guerra *et al.*, 2016; Sharma *et al.*, 2019).

Inhibition of lipid biosynthesis and its uptake provides the physicians with a complete set of tools and possibilities to modulate the lipid composition of the cancer cell.

Summary

Lipid profile may be considered as a crucial prognostic factor in cancer patients. Quantitative changes in lipids are observed in all neoplastic cells as compared to non-malignant cells. Therefore, some lipids (e.g. phosphatidylcholine) may be considered as tumour markers in certain malignancies. Alternations in the main groups of the membrane lipids are mostly associated with activation and inactivation of cellular signalling pathways. In some cases, the changes result in the metabolic reprogramming of tumour cells. On the other hand, alterations made to fatty acids chains length and their degree of unsaturation, change the physical properties of cell membrane - either increasing its fluidity or stabilising membrane proteins in the lipid rafts. Additionally, a significant role in cancer therapy resistance mechanisms and metastases is played by cholesterol which is responsible for membrane fluidity regulation.

There is still much to be discovered on the lipid composition of the cancer cell membrane, however, the current knowledge can already be successfully utilised in cancer treatment.

Author's contributions Idea for the article WS, literature search and data analysis WS, IZ and AZ, supervised and critically revised the work MT and JK.

Funding information This research was funded by the National Science Centre (Poland) within a framework of SONATA BIS 6 (2016/22/E/NZ5/00671; PI: J. Kulbacka).

Compliance with ethical standards

Conflict of interest The authors declare no conflict of interest.

Open Access This article is licensed under a Creative Commons Attribution 4.0 International License, which permits use, sharing, adaptation, distribution and reproduction in any medium or format, as long as you give appropriate credit to the original author(s) and the source, provide a link to the Creative Commons licence, and indicate if changes were made. The images or other third party material in this article are included in the article's Creative Commons licence, unless indicated otherwise in a credit line to the material. If material is not included in the article's Creative Commons licence and your intended use is not permitted by statutory regulation or exceeds the permitted use, you will need to obtain permission directly from the copyright holder. To view a copy of this licence, visit <http://creativecommons.org/licenses/by/4.0/>.

References

- Alvarez SE, Harikumar KB, Hait NC, Allegood J, Strub GM, Kim EY, Maceyka M, Jiang H, Luo C, Kordula T, Milstien S, Spiegel S (2010) Sphingosine-1-phosphate is a missing cofactor for the E3 ubiquitin ligase TRAF2. *Nature* 465(7301):1084–1088. <https://doi.org/10.1038/nature09128>
- Alves, A. C., Ribeiro, D., Nunes, C., & Reis, S. (2016). Biophysics in cancer: The relevance of drug-membrane interaction studies. *Biochim. Biophys. Acta - Biomembr.* Elsevier B.V. <https://doi.org/10.1016/j.bbmem.2016.06.025>
- Ariketh D, Nelson R, Vance JE (2008) Defining the importance of phosphatidylserine synthase-1 (PSS1): Unexpected viability of PSS1-deficient mice. *J. Biol. Chem.* 283(19):12888–12897. <https://doi.org/10.1074/jbc.M800714200>
- Arlauckas, S. P., Popov, A. V., & Delikatny, E. J. (2016). Choline kinase alpha - Putting the ChoK-hold on tumor metabolism. *Prog. Lipid Res.* Elsevier Ltd. <https://doi.org/10.1016/j.plipres.2016.03.005>
- Arun SN, Xie D, Howard AC, Zhong Q, Zhong X, McNeil PL, Bollag WB (2013) Cell wounding activates phospholipase D in primary mouse keratinocytes. *J. Lipid Res.* 54(3):581–591. <https://doi.org/10.1194/jlr.M027060>
- Asakawa H, Sasabe M, Miyazaki R, Matsuda H, Fukai F, Hanada K *et al* (2006) The analysis of N-glycolylneuraminic acid (NeuGc) of hepatoma tissue and K562 cell ferritins using HPLC and mass spectrometry. *Proc. Jpn. Acad. Ser. B. Phys. Biol. Sci.* 82(5):181–187. <https://doi.org/10.2183/pjab.82.181>
- Ayee, M. A., & Levitan, I. (2016). Paradoxical impact of cholesterol on lipid packing and cell stiffness. *Front. Biosci. (Landmark Ed.)*, 21, 1245–59. Retrieved from <http://www.ncbi.nlm.nih.gov/pubmed/27100504>
- Bailey LJ, Choudhary V, Bollag WB (2017) Possible Role of Phosphatidylglycerol-Activated Protein Kinase C- β II in Keratinocyte Differentiation. *Open Dermatol J.* 11(1):59–71. <https://doi.org/10.2174/1874372201711010059>
- Baldanzi G, Cutrupi S, Chianale F, Gnocchi V, Rainero E, Porporato P *et al* (2008) Diacylglycerol kinase- α phosphorylation by Src on Y335 is required for activation, membrane recruitment and Hgf-induced cell motility. *Oncogene* 27(7):942–956. <https://doi.org/10.1038/sj.onc.1210717>

- Baldanzi G, Mitola S, Cutrupi S, Filigheddu N, Van Blitterswijk WJ, Sinigaglia F et al (2004) Activation of diacylglycerol kinase α is required for VEGF-induced angiogenic signaling in vitro. *Oncogene* 23(28):4828–4838. <https://doi.org/10.1038/sj.onc.1207633>
- Bebber, C. M., Müller, F., Clemente, L. P., Weber, J., & von Karstedt, S. (2020). Ferroptosis in cancer cell biology. *Cancers (Basel)*. MDPI AG. <https://doi.org/10.3390/cancers12010164>
- Beloribi-Djefaffia S, Vasseur S, Guillaumond F (2016) Lipid metabolic reprogramming in cancer cells. *Oncogenesis* 5(1):e189–e189. <https://doi.org/10.1038/oncsis.2015.49>
- Belzile O, Huang X, Gong J, Carlson J, Schroit A, Brekken R, Freemark B (2018) Antibody targeting of phosphatidylserine for the detection and immunotherapy of cancer. *ImmunoTargets Ther* 7:1–14. <https://doi.org/10.2147/ITT.S134834>
- Bernardes N, Fialho AM (2018) Perturbing the dynamics and organization of cell membrane components: A new paradigm for cancer-targeted therapies. *Int. J. Mol. Sci.* MDPI AG. <https://doi.org/10.3390/ijms19123871>
- Bird L (2018) Statins as adjuvants. *Nat. Rev. Immunol.* Nature Publishing Group. <https://doi.org/10.1038/s41577-018-0076-5>
- Birge RB, Boeltz S, Kumar S, Carlson J, Wanderley J, Calianese D et al (2016) Phosphatidylserine is a global immunosuppressive signal in efferocytosis, infectious disease, and cancer. *Cell Death Differ.* Nature Publishing Group. <https://doi.org/10.1038/cdd.2016.11>
- Björkholm P, Ernst AM, Hacke M, Wieland F, Brügger B, Von Heijne G (2014) Identification of novel sphingolipid-binding motifs in mammalian membrane proteins. *Biochim. Biophys. Acta - Biomembr.* 1838(8):2066–2070. <https://doi.org/10.1016/j.bbmem.2014.04.026>
- Bleijerveld OB, Brouwers JFHM, Vaandrager AB, Helms JB, Houweling M (2007) The CDP-ethanolamine pathway and phosphatidylserine decarboxylation generate different phosphatidylethanolamine molecular species. *J. Biol. Chem.* 282(39):28362–28372. <https://doi.org/10.1074/jbc.M703786200>
- Bogdanov M, Dowhan W (1998) Phospholipid-assisted protein folding: phosphatidylethanolamine is required at a late step of the conformational maturation of the polytopic membrane protein lactose permease. *EMBO J.* 17(18):5255–5264. <https://doi.org/10.1093/emboj/17.18.5255>
- Borgquist S, Bjarnadottir O, Kimbung S, Ahern TP (2018) Statins: a role in breast cancer therapy? *J. Intern. Med.* Blackwell Publishing Ltd. <https://doi.org/10.1111/joim.12806>
- Brandenburg, L. O., Pufe, T., & Koch, T. (2014). Role of phospholipase D in G-protein coupled receptor function. *Membranes (Basel)*. MDPI AG. <https://doi.org/10.3390/membranes4030302>
- Breimer ME, Säljö K, Barone A, Teneberg S (2017) Glycosphingolipids of human embryonic stem cells. *Glycoconj. J.* Springer New York LLC. <https://doi.org/10.1007/s10719-016-9706-y>
- Brindley DN, Waggoner DW (1996) Phosphatidate phosphohydrolase and signal transduction. *Chem. Phys. Lipids* 80(1–2):45–57. [https://doi.org/10.1016/0009-3084\(96\)02545-5](https://doi.org/10.1016/0009-3084(96)02545-5)
- Brindley DN, Waggoner DW (1998) Mammalian lipid phosphate phosphohydrolases. *J. Biol. Chem. Am Soc Biochem Mole Biol.* <https://doi.org/10.1074/jbc.273.38.24281>
- Brown D, Wanek GL (1992) Glycosyl-phosphatidylinositol-anchored membrane proteins. *J. Am. Soc. Nephrol.* 3(4):895–906 Retrieved from <http://www.ncbi.nlm.nih.gov/pubmed/1450366>
- Budha, S., Giese, R., Gupta, A., De Henau, O., Zappasodi, R., Campesato, L. F., ... Merghoub, T. (2018). Phosphatidylserine targeting antibody in combination with tumor radiation and immune checkpoint blockade promotes anti-tumor activity in mouse B16 melanoma. *J. Immunol.*, 200(1 Supplement).
- Buschiazio J, Ialy-Radio C, Auer J, Wolf JP, Serres C, Lefèvre B, Ziyat A (2013) Cholesterol Depletion Disorganizes Oocyte Membrane Rafts Altering Mouse Fertilization. *PLoS One* 8(4). <https://doi.org/10.1371/journal.pone.0062919>
- Casares D, Escribá PV, Rosselló CA (2019) Membrane Lipid Composition: Effect on Membrane and Organelle Structure, Function and Compartmentalization and Therapeutic Avenues. *Int. J. Mol. Sci.* 20(9):2167. <https://doi.org/10.3390/ijms20092167>
- Chammas R, Sonnenburg JL, Watson NE, Tai T, Farquhar MG, Varki NM, Varki A (1999) De-N-acetyl-gangliosides in humans: unusual subcellular distribution of a novel tumor antigen. *Cancer Res.* 59(6):1337–1346 Retrieved from <http://www.ncbi.nlm.nih.gov/pubmed/10096568>
- Cheng M, Bhujwalla ZM, Glunde K (2016) Targeting phospholipid metabolism in cancer. *Front. Oncol.* Frontiers Media S.A. <https://doi.org/10.3389/fonc.2016.00266>
- Chimento A, Casaburi I, Avena P, Trotta F, De Luca A, Rago V et al (2019) Cholesterol and its metabolites in tumor growth: Therapeutic potential of statins in cancer treatment. *Front. Endocrinol. (Lausanne)*. Frontiers Media S.A. <https://doi.org/10.3389/fendo.2018.00807>
- Chuang PK, Hsiao M, Hsu TL, Chang CF, Wu CY, Chen BR et al (2019) Signaling pathway of globo-series glycosphingolipids and β 1,3-galactosyltransferase V (β 3GalT5) in breast cancer. *Proc. Natl. Acad. Sci. U. S. A.* 116(9):3518–3523 <https://doi.org/10.1073/pnas.1816946116>
- Chung TW, Choi HJ, Park MJ, Choi HJ, Lee SO, Kim KJ et al (2017) The function of cancer-shed gangliosides in macrophage phenotype: Involvement with angiogenesis. *Oncotarget* 8(3):4436–4448. <https://doi.org/10.18632/oncotarget.13878>
- Cocco L, Faenza I, Fiume R, Maria Billi A, Gilmour RS, Manzoli FA (2006, May) Phosphoinositide-specific phospholipase C (PI-PLC) β 1 and nuclear lipid-dependent signaling. *Biochim. Biophys. Acta - Mol. Cell Biol. Lipids.* <https://doi.org/10.1016/j.bbalip.2006.03.001>
- Conrad M, Kagan VE, Bayir H, Pagnussat GC, Head B, Traber MG, Stockwell BR (2018, May 1) Regulation of lipid peroxidation and ferroptosis in diverse species. *Genes Dev.* Cold Spring Harbor Laboratory Press. <https://doi.org/10.1101/gad.314674.118>
- Corcelle-Termeau E, Vindeløv SD, Hämälistö S, Mograbi B, Keldsbo A, Bräsen JH et al (2016) Excess sphingomyelin disturbs ATG9A trafficking and autophagosome closure. *Autophagy* 12(5):833–849. <https://doi.org/10.1080/15548627.2016.1159378>
- Dany M, Gencer S, Nganga R, Thomas RJ, Oleinik N, Baron KD et al (2016) Targeting FLT3-ITD signaling mediates ceramide-dependent mitophagy and attenuates drug resistance in AML. *Blood* 128(15):1944–1958. <https://doi.org/10.1182/blood-2016-04-708750>
- Dawaliby R, Trubbia C, Delporte C, Noyon C, Ruysschaert JM, Van Antwerpen P, Govaerts C (2016) Phosphatidylethanolamine is a key regulator of membrane fluidity in eukaryotic cells. *J. Biol. Chem.* 291(7):3658–3667. <https://doi.org/10.1074/jbc.M115.706523>
- Diao X, Lin T (2019) Progress in therapeutic strategies based on cancer lipid metabolism. *Thorac. Cancer.* <https://doi.org/10.1111/1759-7714.13146>
- Donatello S, Babina IS, Hazelwood LD, Hill ADK, Nabi IR, Hopkins AM (2012) Lipid raft association restricts CD44-ezrin interaction and promotion of breast cancer cell migration. *Am. J. Pathol.* 181(6):2172–2187. <https://doi.org/10.1016/j.ajpath.2012.08.025>
- Du J, Zhou Y, Li Y, Xia J, Chen Y, Chen S et al (2020) Identification of Frataxin as a regulator of ferroptosis. *Redox Biol.* 32:101483. <https://doi.org/10.1016/j.redox.2020.101483>
- Dulak J, Józkwicz A (2005) Anti-angiogenic and anti-inflammatory effects of statins: relevance to anti-cancer therapy. *Curr. Cancer Drug Targets* 5(8):579–594. <https://doi.org/10.2174/156800905774932824>
- Ehmsen S, Pedersen MH, Wang G, Terp MG, Arslanagic A, Hood BL et al (2019) Increased Cholesterol Biosynthesis Is a Key Characteristic of Breast Cancer Stem Cells Influencing Patient

- Outcome. Cell Rep. 27(13):3927–3938.e6. <https://doi.org/10.1016/j.celrep.2019.05.104>
- Engelking, L. R., & Engelking, L. R. (2015). Chapter 59 – Sphingolipids. Textb. Vet. Physiol. Chem., 378–383. <https://doi.org/10.1016/B978-0-12-391909-0.50059-1>
- Fahy E, Cotter D, Sud M, Subramaniam S (2011) Lipid classification, structures and tools. Biochim. Biophys. Acta - Mol. Cell Biol. Lipids 1811(11):637–647. <https://doi.org/10.1016/j.bbalip.2011.06.009>
- Falkenburger, B. H., Jensen, J. B., Dickson, E. J., Suh, B. C., & Hille, B. (2010). Phosphoinositides: Lipid regulators of membrane proteins. In Journal of Physiology (Vol. 588, pp. 3179–3185). Wiley-Blackwell. <https://doi.org/10.1113/jphysiol.2010.192153>
- Fan J, Sammalkorpi M, Haataja M (2010) Formation and regulation of lipid microdomains in cell membranes: Theory, modeling, and speculation. FEBS Lett. <https://doi.org/10.1016/j.febslet.2009.10.051>
- Frimpong, M. (2019). Modulating Lipid Composition in Cancer Cell-An Alternative Way to Augment Cancer Treatment. Int. J. Lipid Res., 1(1).
- Furukawa K, Akagi T, Nagata Y, Yamada Y, Shimotohno K, Cheung NK et al (1993) GD2 ganglioside on human T-lymphotropic virus type I-infected T cells: possible activation of beta-1,4-N-acetylgalactosaminyltransferase gene by p40tax. Proc. Natl. Acad. Sci. USA 90(5):1972–1976. <https://doi.org/10.1073/pnas.90.5.1972>
- Gajate C, Mollinedo F (2015) Lipid raft-mediated Fas/CD95 apoptotic signaling in leukemic cells and normal leukocytes and therapeutic implications. J. Leukoc. Biol. 98(5):739–759. <https://doi.org/10.1189/jlb.2mr0215-055r>
- Gallop JL, Walrant A, Cantley LC, Kirschner MW (2013) Phosphoinositides and membrane curvature switch the mode of actin polymerization via selective recruitment of toco-1 and Snx9. Proc. Natl. Acad. Sci. U. S. A. 110(18):7193–7198. <https://doi.org/10.1073/pnas.1305286110>
- Gbelcová H, Švėda M, Laubertová L, Varga I, Vitek L, Kolář M et al (2013) The effect of simvastatin on lipid droplets accumulation in human embryonic kidney cells and pancreatic cancer cells. Lipids Health Dis. 12(1). <https://doi.org/10.1186/1476-511X-12-126>
- George KS, Wu S (2012) Lipid raft: A floating island of death or survival. Toxicol. Appl. Pharmacol. 259(3):311–319. <https://doi.org/10.1016/j.taap.2012.01.007>
- Ghandadi M, Valadan R, Mohammadi H, Akhtari J, Khodashenas S, Ashari S (2019) Wnt- β -catenin Signaling Pathway, the Achilles' Heels of Cancer Multidrug Resistance. Curr. Pharm. Des. 25(39):4192–4207. <https://doi.org/10.2174/1381612825666191112142943>
- Gibellini F, Smith TK (2010) The Kennedy pathway—De novo synthesis of phosphatidylethanolamine and phosphatidylcholine. IUBMB Life 62(6):414–428. <https://doi.org/10.1002/iub.337>
- Goddard DH, Grossman SL, Newton R, Clark MA, Bomalaski JS (1992) Regulation of synovial cell growth: basic fibroblast growth factor synergizes with interleukin 1 β stimulating phospholipase A2 enzyme activity, phospholipase A2 activating protein production and release of prostaglandin E2 by rheumatoid arthritis synovial cells in culture. Cytokine 4(5):377–384. [https://doi.org/10.1016/1043-4666\(92\)90081-2](https://doi.org/10.1016/1043-4666(92)90081-2)
- Gomes L, Sorgine M, Passos CLA, Ferreira C, de Andrade IR, Silva JL et al (2019) Increase in fatty acids and flotillins upon resveratrol treatment of human breast cancer cells. Sci. Rep. 9(1):1–11. <https://doi.org/10.1038/s41598-019-50416-5>
- Gondré-Lewis MC, Petrasche HI, Wassif CA, Harries D, Parsegian A, Porter FD, Loh YP (2006) Abnormal sterols in cholesterol-deficiency diseases cause secretory granule malformation and decreased membrane curvature. J. Cell Sci. 119(9):1876–1885. <https://doi.org/10.1242/jcs.02906>
- Graciá RS, Bezlyepkina N, Knorr RL, Lipowsky R, Dimova R (2010) Effect of cholesterol on the rigidity of saturated and unsaturated membranes: fluctuation and electrodeformation analysis of giant vesicles. Soft Matter 6(7):1472. <https://doi.org/10.1039/b920629a>
- Groux-Degroote S, Guérardel Y, Delannoy P (2017) Gangliosides: Structures, Biosynthesis, Analysis, and Roles in Cancer. Chembiochem 18(13):1146–1154. <https://doi.org/10.1002/cbic.201600705>
- Guerra FS, Sampaio LS, König S, Bonamino M, Rossi MID, Costa ML et al (2016) Membrane cholesterol depletion reduces breast tumor cell migration by a mechanism that involves non-canonical Wnt signaling and IL-10 secretion. Transl. Med. Commun. 1(1):3. <https://doi.org/10.1186/s41231-016-0002-4>
- Guo Y-X, Ma Y-J, Han L, Wang Y-J, Han J-A, Zhu Y (2015) Role of sphingosine 1-phosphate in human pancreatic cancer cells proliferation and migration. Int. J. Clin. Exp. Med. 8(11):20349–20354 Retrieved from <http://www.ncbi.nlm.nih.gov/pubmed/26884951>
- Hammond GRV, Machner MP, Balla T (2014) A novel probe for phosphatidylinositol 4-phosphate reveals multiple pools beyond the Golgi. J. Cell Biol. 205(1):113–126. <https://doi.org/10.1083/jcb.201312072>
- Han S, Huh J, Kim W, Jeong S, Min DS, Jung Y (2014) Phospholipase D activates HIF-1-VEGF pathway via phosphatidic acid. Exp. Mol. Med. 46(12). <https://doi.org/10.1038/emmm.2014.86>
- Hanada K (2010, April) Intracellular trafficking of ceramide by ceramide transfer protein. Proc. Japan Acad. Ser. B Phys. Biol. Sci. <https://doi.org/10.2183/pjab.86.426>
- Hancock JF (2006, June) Lipid rafts: Contentious only from simplistic standpoints. Nat. Rev. Mol. Cell Biol. NIH Public Access. <https://doi.org/10.1038/nrm1925>
- Haraszi RA, Didiot MC, Sapp E, Leszyk J, Shaffer SA, Rockwell HE et al (2016) High-resolution proteomic and lipidomic analysis of exosomes and microvesicles from different cell sources. J. Extracell. Vesicles 5(1). <https://doi.org/10.3402/jev.v5.32570>
- Hatoum D, Haddadi N, Lin Y, Nassif NT, McGowan EM (2017) Mammalian sphingosine kinase (SphK) isoenzymes and isoform expression: challenges for SphK as an oncotarget. Oncotarget 8(22). <https://doi.org/10.18632/oncotarget.16370>
- Henriksen JR, Andresen TL, Feldborg LN, Duelund L, Ipsen JH (2010) Understanding detergent effects on lipid membranes: A model study of lysolipids. Biophys. J. 98(10):2199–2205. <https://doi.org/10.1016/j.bpj.2010.01.037>
- Hess JA, Ross AH, Qiu RG, Symons M, Exton JH (1997) Role of Rho family proteins in phospholipase D activation by growth factors. J. Biol. Chem. 272(3):1615–1620. <https://doi.org/10.1074/jbc.272.3.1615>
- Hirai H, Natori S, Sekimizu K (1992) Reversal by phosphatidylglycerol and cardiolipin of inhibition of transcription and replication by histones in vitro. Arch. Biochem. Biophys. 298(2):458–463. [https://doi.org/10.1016/0003-9861\(92\)90435-y](https://doi.org/10.1016/0003-9861(92)90435-y)
- Hishikawa D, Shindou H, Kobayashi S, Nakanishi H, Taguchi R, Shimizu T (2008) Discovery of a lysophospholipid acyltransferase family essential for membrane asymmetry and diversity. Proc. Natl. Acad. Sci. USA 105(8):2830–2835. <https://doi.org/10.1073/pnas.0712245105>
- Hoejholt KL, Mužić T, Jensen SD, Dalgaard LT, Bilgin M, Nylandsted J et al (2019) Calcium electroporation and electrochemotherapy for cancer treatment: Importance of cell membrane composition investigated by lipidomics, calorimetry and in vitro efficacy. Sci. Rep. 9(1). <https://doi.org/10.1038/s41598-019-41188-z>
- Hoen EN, Cremer T, Gallo RC, Margolis LB (2016, August 16) Extracellular vesicles and viruses: Are they close relatives? Proc. Natl. Acad. Sci. USA. <https://doi.org/10.1073/pnas.1605146113>
- Honsho M, Abe Y, Fujiki Y (2017) Plasmalogen biosynthesis is spatiotemporally regulated by sensing plasmalogens in the inner leaflet of plasma membranes. Sci. Rep. 7. <https://doi.org/10.1038/srep43936>
- Hosain SB, Khiste SK, Uddin MB, Vorubindi V, Ingram C, Zhang S et al (2016) Inhibition of glucosylceramide synthase eliminates the

- oncogenic function of p53 R273H mutant in the epithelial-mesenchymal transition and induced pluripotency of colon cancer cells. *Oncotarget* 7(37):60575–60592. <https://doi.org/10.18632/oncotarget.11169>
- Hsu FS, Mao Y (2015) The structure of phosphoinositide phosphatases: Insights into substrate specificity and catalysis. *Biochim. Biophys. Acta - Mol. Cell Biol. Lipids*. Elsevier. <https://doi.org/10.1016/j.bbalip.2014.09.015>
- Hu L, Wang RY, Cai J, Feng D, Yang GZ, Xu QG et al (2016) Overexpression of CHKA contributes to tumor progression and metastasis and predicts poor prognosis in colorectal carcinoma. *Oncotarget* 7(41):66660–66678. <https://doi.org/10.18632/oncotarget.11433>
- Hu M, Cheung BM, Tomlinson B (2012) Safety of statins: An update. *Ther. Adv. Drug Saf.* SAGE Publ. <https://doi.org/10.1177/2042098612439884>
- Huang, F., Wang, K., & Shen, J. (2020). Lipoprotein-associated phospholipase A2: The story continues. *Med. Res. Rev.* John Wiley and Sons Inc. <https://doi.org/10.1002/med.21597>
- Huang, W.-C., Chen, C.-L., Lin, Y.-S., & Lin, C.-F. (2011). Apoptotic Sphingolipid Ceramide in Cancer Therapy. *J Lipids*, 565316. <https://doi.org/10.1155/2011/565316>
- Hutchinson S, Battaglia S, Roberg-Larsen H, Hughes T, Thorne J (2018) Cholesterol metabolism and chemo-resistance in breast cancer. *Endocr. Abstr.* <https://doi.org/10.1530/endoabs.59.p111>
- Hwang S-Y, Kim T-H, Lee H-H (2015) Neutral Sphingomyelinase and Breast Cancer Research. *J. Menopausal Med.* 21(1):24. <https://doi.org/10.6118/jmm.2015.21.1.24>
- Iuchi K, Ema M, Suzuki M, Yokoyama C, Hisatomi H (2019) Oxidized unsaturated fatty acids induce apoptotic cell death in cultured cells. *Mol. Med. Rep.* 19(4):2767–2773. <https://doi.org/10.3892/mmr.2019.9940>
- Jiang XC, Yeang C, Li Z, Chakraborty M, Liu J, Zhang H, Fan Y (2009) Sphingomyelin biosynthesis: Its impact on lipid metabolism and atherosclerosis. *Clin. Lipidol.* <https://doi.org/10.2217/clp.09.49>
- Kakorin S, Brinkmann U, Neumann E (2005) Cholesterol reduces membrane electroporation and electric deformation of small bilayer vesicles. *Biophys. Chem.* 117(2):155–171 <https://doi.org/10.1016/J.BPC.2005.05.001>
- Kawasaki Y, Ito A, Withers DA, Taima T, Kakoi N, Saito S, Arai Y (2010) Ganglioside DSGb5, preferred ligand for Siglec-7, inhibits NK cell cytotoxicity against renal cell carcinoma cells. *Glycobiology* 20(11):1373–1379 <https://doi.org/10.1093/glycob/cwq116>
- Kindler T, Comejo MG, Scholl C, Liu J, Leeman DS, Haydu JE et al (2008) K-RasG12D-induced T-cell lymphoblastic lymphoma/leukemias harbor Notch1 mutations and are sensitive to {gamma}-secretase inhibitors. *Blood* 112(8):3373–3382 <https://doi.org/10.1182/blood-2008-03-147587>
- King HW, Michael MZ, Gleadle JM (2012) Hypoxic enhancement of exosome release by breast cancer cells. *BMC Cancer* 12(1):421 <https://doi.org/10.1186/1471-2407-12-421>
- Kitajka, K., Martínez, E., Miralles, A., & Escibá, P. V. (2002). Role of Phosphatidylethanolamine in G Protein-Coupled Receptor-Associated Signal Transduction (pp. 491–496). https://doi.org/10.1007/978-1-4615-0193-0_75
- Kraveka JM, Li L, Szulc ZM, Bielawski J, Ogretmen B, Hannun YA et al (2007) Involvement of dihydroceramide desaturase in cell cycle progression in human neuroblastoma cells. *J. Biol. Chem.* 282(23):16718–16728. <https://doi.org/10.1074/jbc.M700647200>
- Krawitz PM, Murakami Y, Rieß A, Hietala M, Krüger U, Zhu N et al (2013) PGAP2 mutations, affecting the GPI-anchor-synthesis pathway, cause hyperphosphatasia with mental retardation syndrome. *Am. J. Hum. Genet.* 92(4):584–589. <https://doi.org/10.1016/j.ajhg.2013.03.011>
- Krengel U, Bousquet PA (2014) Molecular recognition of gangliosides and their potential for cancer immunotherapies. *Front. Immunol.* Frontiers Research Foundation. <https://doi.org/10.3389/fimmu.2014.00325>
- Kuge O, Nishijima M (1997, September 4) Phosphatidylserine synthase I and II of mammalian cells. *Biochim. Biophys. Acta - Lipids Lipid Metab.* [https://doi.org/10.1016/S0005-2760\(97\)00137-9](https://doi.org/10.1016/S0005-2760(97)00137-9)
- Kuge O, Saito K, Nishijima M (1997) Cloning of a Chinese hamster ovary (CHO) cDNA encoding phosphatidylserine synthase (PSS) II, overexpression of which suppresses the phosphatidylserine biosynthetic defect of a PSS I-lacking mutant of CHO-K1 cells. *J. Biol. Chem.* 272(31):19133–19139 <https://doi.org/10.1074/jbc.272.31.19133>
- Kurrasch-Orbaugh DM, Watts VALJ, Barker EL, Nichols DE (2003) Phospholipase C and Phospholipase A2 Signaling Pathways Have Different Receptor Reserves. *J Pharmacol Exp Ther.* 304(1):229–237. <https://doi.org/10.1124/jpet.102.042184.nature>
- Lane DJR, Bae DH, Merlot AM, Sahni S, Richardson DR (2015, March 31) Duodenal cytochrome b (DCYTB) in Iron metabolism: An update on function and regulation. *Nutrients*. MDPI AG. <https://doi.org/10.3390/nu7042274>
- Lang Z, Guerrero M, Li R, Ladisch S (2001) Ganglioside GD1a enhances VEGF-induced endothelial cell proliferation and migration. *Biochem. Biophys. Res. Commun.* 282(4):1031–1037. <https://doi.org/10.1006/bbrc.2001.4630>
- Lankry D, Rovis TL, Jonjic S, Mandelboim O (2013) The interaction between CD300a and phosphatidylserine inhibits tumor cell killing by NK cells. *Eur. J. Immunol.* 43(8):2151–2161. <https://doi.org/10.1002/eji.201343433>
- Lee CH, Kim HK, Jeong JS, Lee YD, Jin ZW, Im SY, Lee HK (2015) Mechanism of glutamine inhibition of cytosolic phospholipase a2 (cPLA2): Evidence of physical interaction between glutamine-Induced mitogen-activated protein kinase phosphatase-1 and cPLA2. *Clin. Exp. Immunol.* 180(3):571–580. <https://doi.org/10.1111/cei.12585>
- Lee S, Hirt H, Lee Y (2001) Phosphatidic acid activates a wound-activated MAPK in Glycine max. *Plant J.* 26(5):479–486. <https://doi.org/10.1046/j.1365-3113x.2001.01037.x>
- Leung YM, Xion Y, Ou YJ, Kwan CY (1998) Perturbation by lysophosphatidylcholine of membrane permeability in cultured vascular smooth muscle and endothelial cells. *Life Sci.* 63(11):965–973. [https://doi.org/10.1016/s0024-3205\(98\)00354-3](https://doi.org/10.1016/s0024-3205(98)00354-3)
- Li J, Condello S, Thomes-Pepin J, Ma X, Xia Y, Hurley TD et al (2017) Lipid Desaturation Is a Metabolic Marker and Therapeutic Target of Ovarian Cancer Stem Cells. *Cell Stem Cell* 20(3):303–314.e5. <https://doi.org/10.1016/j.stem.2016.11.004>
- Li M, Zhang Z, Yuan J, Zhang Y, Jin X (2014) Altered glutamate cysteine ligase expression and activity in renal cell carcinoma. *Biomed. Reports* 2(6):831–834. <https://doi.org/10.3892/br.2014.359>
- Li X, Wang X, Zhang X, Zhao M, Tsang WL, Zhang Y et al (2013) Genetically encoded fluorescent probe to visualize intracellular phosphatidylinositol 3,5-bisphosphate localization and dynamics. *Proc. Natl. Acad. Sci. U. S. A.* 110(52):21165–21170. <https://doi.org/10.1073/pnas.1311864110>
- Li YC, Park MJ, Ye SK, Kim CW, Kim YN (2006) Elevated levels of cholesterol-rich lipid rafts in cancer cells are correlated with apoptosis sensitivity induced by cholesterol-depleting agents. *Am. J. Pathol.* 168(4):1107–1118. <https://doi.org/10.2353/ajpath.2006.050959>
- Liscovitch M, Czarny M, Fiucci G, Tang X (2000, February 1) Phospholipase D: Molecular and cell biology of a novel gene family. *Biochem. J. Portland Press Ltd.* <https://doi.org/10.1042/0264-6021:3450401>
- Liu L, Choudhary V, Toulmay A, Prinz WA (2017a) An inducible ER-Golgi tether facilitates ceramide transport to alleviate lipotoxicity. *J. Cell Biol.* 216(1):131–147. <https://doi.org/10.1083/jcb.201606059>

- Liu S, Sheng R, Jung JH, Wang L, Stec E, O'Connor MJ et al (2017b) Orthogonal lipid sensors identify transbilayer asymmetry of plasma membrane cholesterol. *Nat. Chem. Biol.* 13(3):268–274. <https://doi.org/10.1038/nchembio.2268>
- Liu Y-Y, Gupta V, Patwardhan GA, Bhinge K, Zhao Y, Bao J et al (2010) Glucosylceramide synthase upregulates MDR1 expression in the regulation of cancer drug resistance through cSrc and beta-catenin signaling. *Mol. Cancer* 9:145. <https://doi.org/10.1186/1476-4598-9-145>
- Liu, Y. Y., Hill, R. A., & Li, Y. T. (2013). Ceramide Glycosylation Catalyzed by Glucosylceramide Synthase and Cancer Drug Resistance. In *Advances in Cancer Research* (Vol. 117, pp. 59–89). Academic Press Inc. <https://doi.org/10.1016/B978-0-12-394274-6.00003-0>
- Lladó V, López DJ, Ibaguren M, Alonso M, Soriano JB, Escribá PV, Busquets X (2014) Regulation of the cancer cell membrane lipid composition by NaCHOleate: effects on cell signaling and therapeutic relevance in glioma. *Biochim. Biophys. Acta* 1838(6):1619–1627. <https://doi.org/10.1016/j.bbame.2014.01.027>
- Long J, Zhang C-J, Zhu N, Du K, Yin Y-F, Tan X et al (2018) Lipid metabolism and carcinogenesis, cancer development. *Am. J. Cancer Res.* 8(5):778–791 Retrieved from <http://www.ncbi.nlm.nih.gov/pubmed/29888102>
- Lucas L, Penalva V, Ramirez de Molina A, Del Peso L, Lacal JC (2002) Modulation of phospholipase D by Ras proteins mediated by its effectors Ral-GDS, PI3K and Raf-1. *Int. J. Oncol.* 21(3):477–485 Retrieved from <http://www.ncbi.nlm.nih.gov/pubmed/12168089>
- Luo X, Zhao X, Cheng C, Li N, Liu Y, Cao Y (2018) The implications of signaling lipids in cancer metastasis. *Exp. Mol. Med.* Nature Publishing Group. <https://doi.org/10.1038/s12276-018-0150-x>
- Manara MC, Nicoletti G, Zambelli D, Ventura S, Guerzoni C, Landuzzi L et al (2010) NVP-BEZ235 as a new therapeutic option for sarcomas. *Clin. Cancer Res.* 16(2):530–540. <https://doi.org/10.1158/1078-0432.CCR-09-0816>
- Manna, P., & Jain, S. K. (2015). Phosphatidylinositol-3,4,5-triphosphate and cellular signaling: Implications for obesity and diabetes. *Cell. Physiol. Biochem. S. Karger AG.* <https://doi.org/10.1159/000373949>
- Mariggio S, Bavec A, Natale E, Zizza P, Salmona M, Corda D, Di Girolamo M (2006) Galpha13 mediates activation of the cytosolic phospholipase A2alpha through fine regulation of ERK phosphorylation. *Cell. Signal.* 18(12):2200–2208 <https://doi.org/10.1016/j.cellsig.2006.05.003>
- Martirosyan A, Clendening JW, Goard CA, Penn LZ (2010) Lovastatin induces apoptosis of ovarian cancer cells and synergizes with doxorubicin: Potential therapeutic relevance. *BMC Cancer* 10. <https://doi.org/10.1186/1471-2407-10-103>
- Mason P, Liang B, Li L, Fremgen T, Murphy E, Quinn A et al (2012) SCD1 inhibition causes cancer cell death by depleting mono-unsaturated fatty acids. *PLoS One* 7(3):e33823. <https://doi.org/10.1371/journal.pone.0033823>
- Massaro C, Thomas J, Phanstiel O IV (2017) Investigation of Polyamine Metabolism and Homeostasis in Pancreatic Cancers. *Med. Sci.* 5(4): 32. <https://doi.org/10.3390/medsci5040032>
- Matsubara T, Ikeda M, Kiso Y, Sakuma M, Yoshino KI, Sakane F et al (2012) c-Abl tyrosine kinase regulates serum-induced nuclear export of diacylglycerol kinase α by Phosphorylation at Tyr-218. *J. Biol. Chem.* 287(8):5507–5517. <https://doi.org/10.1074/jbc.M111.296897>
- Matsubara T, Shirai Y, Miyasaka K, Murakami T, Yamaguchi Y, Ueyama T et al (2006) Nuclear transportation of diacylglycerol kinase γ and its possible function in the nucleus. *J. Biol. Chem.* 281(10):6152–6164. <https://doi.org/10.1074/jbc.M509873200>
- Mccartney AJ, Zhang Y, Weisman LS (2014) Phosphatidylinositol 3,5-bisphosphate: Low abundance, high significance. *BioEssays.* <https://doi.org/10.1002/bies.201300012>
- McLaughlin S, Murray D (2005, December 1) Plasma membrane phosphoinositide organization by protein electrostatics. *Nature.* Nature Publishing Group. <https://doi.org/10.1038/nature04398>
- Melnikovych G, Haug JS, Goldner CM (1992) Growth inhibition of leukemia cell line CEM-C1 by farnesol: Effects of phosphatidylcholine and diacylglycerol. *Biochem. Biophys. Res. Commun.* 186(1): 543–548. [https://doi.org/10.1016/S0006-291X\(05\)80842-3](https://doi.org/10.1016/S0006-291X(05)80842-3)
- Menon AK, Eppinger M, Mayor S, Schwarz RT (1993) Phosphatidylethanolamine is the donor of the terminal phosphoethanolamine group in trypanosome glycosylphosphatidylinositols. *EMBO J.* 12(5):1907–1914. <https://doi.org/10.1002/j.1460-2075.1993.tb05839.x>
- Milburn CC, Deak M, Kelly SM, Price NC, Alessi DR, Van Aalten DMF (2003) Binding of phosphatidylinositol 3,4,5-trisphosphate to the pleckstrin homology domain of protein kinase B induces a conformational change. *Biochem. J.* 375(Pt 3):531–538. <https://doi.org/10.1042/BJ20031229>
- Mo, H., Jeter, R., Bachmann, A., Yount, S. T., Shen, C. L., & Yeganehjoo, H. (2019). The potential of isoprenoids in adjuvant cancer therapy to reduce adverse effects of statins. *Front. Pharmacol. Frontiers Media S.A.* <https://doi.org/10.3389/fphar.2018.01515>
- Modok S, Heyward C, Callaghan R (2004) P-glycoprotein retains function when reconstituted into a sphingolipid- and cholesterol-rich environment. *J. Lipid Res.* 45(10):1910–1918. <https://doi.org/10.1194/jlr.M400220-JLR200>
- Mollinedo, F., & Gajate, C. (2020). Lipid rafts as signaling hubs in cancer cell survival/death and invasion: implications in tumor progression and therapy. Retrieved from www.jlr.org
- Moro K, Nagahashi M, Gabriel E, Takabe K, Wakai T (2019) Clinical application of ceramide in cancer treatment. *Breast Cancer.* Springer Tokyo. <https://doi.org/10.1007/s12282-019-00953-8>
- Muftuoglu Y, Xue Y, Gao X, Wu D, Ha Y (2016) Mechanism of substrate specificity of phosphatidylinositol phosphate kinases. *Proc. Natl. Acad. Sci. U. S. A.* 113(31):8711–8716 <https://doi.org/10.1073/pnas.1522112113>
- Mukherjee A, Kenny HA, Lengyel E (2017, March 2) Unsaturated Fatty Acids Maintain Cancer Cell Stemness. *Cell Stem Cell. Cell Press.* <https://doi.org/10.1016/j.stem.2017.02.008>
- Mullen TD, Obeid LM (2012) Ceramide and apoptosis: exploring the enigmatic connections between sphingolipid metabolism and programmed cell death. *Anticancer. Agents Med. Chem.* 12(4):340–363 Retrieved from <http://www.ncbi.nlm.nih.gov/pubmed/21707511>
- Murakami M, Sato H, Miki Y, Yamamoto K, Taketomi Y (2015, July 1) A new era of secreted phospholipase A2. *J. Lipid Res. Am Soc Biochem Mole Biol Inc.* <https://doi.org/10.1194/jlr.R058123>
- Murray NR, Fields AP (1998) Phosphatidylglycerol is a physiologic activator of nuclear protein kinase C. *J. Biol. Chem.* 273(19):11514–11520. <https://doi.org/10.1074/jbc.273.19.11514>
- Nagarajan SR, Paul-Heng M, Krycer JR, Fazakerley DJ, Sharland AF, Hoy XAJ (2019) Lipid and glucose metabolism in hepatocyte cell lines and primary mouse hepatocytes: A comprehensive resource for in vitro studies of hepatic metabolism. *Am. J. Physiol. - Endocrinol. Metab.* 316(4):E578–E589. <https://doi.org/10.1152/ajpendo.00365.2018>
- Nascimbeni AC, Codogno P, Morel E (2017) Phosphatidylinositol-3-phosphate in the regulation of autophagy membrane dynamics. *FEBS J. Blackwell Publishing Ltd.* <https://doi.org/10.1111/febs.13987>
- Nordström T, Clements M, Karlsson R, Adolfsson J, Grönberg H (2015) The risk of prostate cancer for men on aspirin, statin or antidiabetic medications. *Eur. J. Cancer* 51(6):725–733. <https://doi.org/10.1016/j.ejca.2015.02.003>

- Ogretmen B (2017) Sphingolipid metabolism in cancer signalling and therapy. *Nat. Rev. Cancer*. Nature Publishing Group. <https://doi.org/10.1038/nrc.2017.96>
- Ollila S, Hyvönen MT, Vattulainen I (2007) Polyunsaturation in lipid membranes: Dynamic properties and lateral pressure profiles. *J. Phys. Chem. B* 111(12):3139–3150. <https://doi.org/10.1021/jp065424f>
- Oude Weernink PA, Han L, Jakobs KH, Schmidt M (2007) Dynamic phospholipid signaling by G protein-coupled receptors. *Biochim. Biophys. Acta - Biomembr.* Elsevier. <https://doi.org/10.1016/j.bbmem.2006.09.012>
- Pakiet A, Kobiela J, Stepnowski P, Sledzinski T, Mika A (2019) Changes in lipids composition and metabolism in colorectal cancer: A review. *Lipids Health Dis.* BioMed Central Ltd. <https://doi.org/10.1186/s12944-019-0977-8>
- Panneer Selvam S, De Palma RM, Oaks JJ, Oleinik N, Peterson YK, Stahelin RV et al (2015) Binding of the sphingolipid S1P to hTERT stabilizes telomerase at the nuclear periphery by allosterically mimicking protein phosphorylation. *Sci. Signal.* 8(381):ra58 <https://doi.org/10.1126/scisignal.aaa4998>
- Papageorgis P, Cheng K, Ozturk S, Gong Y, Lambert AW, Abdolmaleky HM et al (2011) Smad4 inactivation promotes malignancy and drug resistance of colon cancer. *Cancer Res.* 71(3):998–1008. <https://doi.org/10.1158/0008-5472.CAN-09-3269>
- Papandreou I, Goliasova T, Denko NC (2011) Anticancer drugs that target metabolism: Is dichloroacetate the new paradigm? *Int. J. Cancer.* John Wiley & Sons, Ltd. <https://doi.org/10.1002/ijc.25728>
- Parham KA, Zebol JR, Tooley KL, Sun WY, Moldenhauer LM, Cockshell MP et al (2015) Sphingosine 1-phosphate is a ligand for peroxisome proliferator-activated receptor- γ that regulates neoangiogenesis. *FASEB J.* 29(9):3638–3653. <https://doi.org/10.1096/fj.14-261289>
- Park ES, Choi S, Shin B, Yu J, Yu J, Hwang JM et al (2015) Tumor necrosis factor (TNF) receptor-associated factor (TRAF)-interacting protein (TRIP) negatively regulates the TRAF2 ubiquitin-dependent pathway by suppressing the TRAF2-sphingosine 1-phosphate (S1P) interaction. *J. Biol. Chem.* 290(15):9660–9673 <https://doi.org/10.1074/jbc.M114.609685>
- Park K, Elias PM, Shin K-O, Lee Y-M, Hupe M, Borkowski AW et al (2013) A Novel Role of a Lipid Species, Sphingosine-1-Phosphate, in Epithelial Innate Immunity. *Mol. Cell. Biol.* 33(4):752–762. <https://doi.org/10.1128/mcb.01103-12>
- Pascual G, Avgustinova A, Mejetta S, Martín M, Castellanos A, Attolini CSO et al (2017) Targeting metastasis-initiating cells through the fatty acid receptor CD36. *Nature* 541(7635):41–45. <https://doi.org/10.1038/nature20791>
- Pasmant E, Vidaud D, Ballerini P (2015) RAS MAPK inhibitors deregulation in leukemia. *Oncoscience.* Impact Journals LLC. <https://doi.org/10.18632/oncscience.274>
- Patel D, Witt SN (2017) Ethanolamine and. Partners in Health and Disease. *Oxid. Med. Cell. Longev.* Hindawi Limited, Phosphatidylethanolamine. <https://doi.org/10.1155/2017/4829180>
- Payne AW, Pant DK, Pan T-C, Chodosh LA (2014) Ceramide kinase promotes tumor cell survival and mammary tumor recurrence. *Cancer Res.* 74(21):6352–6363. <https://doi.org/10.1158/0008-5472.CAN-14-1292>
- Peck B, Schug ZT, Zhang Q, Dankworth B, Jones DT, Smethurst E et al (2016) Inhibition of fatty acid desaturation is detrimental to cancer cell survival in metabolically compromised environments. *Cancer Metab.* 4(1):6. <https://doi.org/10.1186/s40170-016-0146-8>
- Peetla C, Vijayaraghavalu S, Labhasetwar V (2013) Biophysics of cell membrane lipids in cancer drug resistance: Implications for drug transport and drug delivery with nanoparticles. *Adv. Drug Deliv. Rev.* NIH Public Access. <https://doi.org/10.1016/j.addr.2013.09.004>
- Peng Y, He G, Tang D, Xiong L, Wen Y, Miao X et al (2017) Lovastatin inhibits Cancers stem cells and Sensitizes to chemo- and photodynamic therapy in Nasopharyngeal carcinoma. *J. Cancer* 8(9):1655–1664. <https://doi.org/10.7150/jca.19100>
- Perrotti F, Rosa C, Cicalini I, Sacchetta P, Del Boccio P, Genovesi D, Pieragostino D (2016, December 1) Advances in lipidomics for cancer biomarkers discovery. *Int. J. Mol. Sci.* MDPI AG. <https://doi.org/10.3390/ijms17121992>
- Pike LJ (2003) Lipid rafts: bringing order to chaos. *J. Lipid Res.* 44(4):655–667. <https://doi.org/10.1194/jlr.R200021-JLR200>
- Pike LJ (2004) Lipid rafts: heterogeneity on the high seas. *Biochem. J.* 378(Pt 2):281–292. <https://doi.org/10.1042/BJ20031672>
- Pitcher JA, Fredericks ZL, Stone WC, Premont RT, Stoffel RH, Koch WJ, Lefkowitz RJ (1996) Phosphatidylinositol 4,5-bisphosphate (PIP₂)-enhanced G protein-coupled receptor kinase (GRK) activity. Location, structure, and regulation of the PIP₂ binding site distinguishes the GRK subfamilies. *J. Biol. Chem.* 271(40):24907–24913. <https://doi.org/10.1074/jbc.271.40.24907>
- Plattner R, Kadlec L, DeMali KA, Kazlauskas A, Pendergast AM (1999) c-Abl is activated by growth factors and Src family kinases and has a role in the cellular response to PDGF. *Genes Dev.* 13(18):2400–2411. <https://doi.org/10.1101/gad.13.18.2400>
- Podo, F., Paris, L., Cecchetti, S., Spadaro, F., Abalsamo, L., Ramoni, C., ... Iorio, E. (2016). Activation of phosphatidylcholinespecific phospholipase C in breast and ovarian cancer: Impact on mrs-detected choline metabolic profile and perspectives for targeted therapy. *Front. Oncol.*, 6. <https://doi.org/10.3389/fonc.2016.00171>
- Poli A, Zaurito AE, Abdul-Hamid S, Fiume R, Faenza I, Divecha N (2019) Phosphatidylinositol 5 phosphate (Pi5p): From behind the scenes to the front (nuclear) stage. *Int. J. Mol. Sci.* MDPI AG. <https://doi.org/10.3390/ijms20092080>
- Porter NA, Caldwell SE, Mills KA (1995, April) Mechanisms of free radical oxidation of unsaturated lipids. *Lipids.* Springer-Verlag. <https://doi.org/10.1007/BF02536034>
- Pradas, I., Huynh, K., Cabré, R., Ayala, V., Meikle, P. J., Jové, M., & Pamplona, R. (2018). Lipidomics reveals a tissue-specific fingerprint. *Front. Physiol.*, 9(AUG). <https://doi.org/10.3389/fphys.2018.01165>
- Preetha A, Banerjee R, Huilgol N (2005) Surface activity, lipid profiles and their implications in cervical cancer. *J. Cancer Res. Ther.* 1(3):180. <https://doi.org/10.4103/0973-1482.19600>
- Preininger AM, Henage LG, Oldham WM, Yoon EJ, Hamm HE, Brown HA (2006) Direct modulation of phospholipase D activity by Gbetagamma. *Mol. Pharmacol.* 70(1):311–318. <https://doi.org/10.1124/mol.105.021451>
- Pukel CS, Lloyd KO, Travassos LR, Dippold WG, Oettgen HF, Old LJ (1982) GD3, a prominent ganglioside of human melanoma. Detection and characterisation by mouse monoclonal antibody. *J. Exp. Med.* 155(4):1133–1147. <https://doi.org/10.1084/jem.155.4.1133>
- Purow B (2015) Molecular pathways: Targeting diacylglycerol kinase alpha in cancer. *Clin. Cancer Res.* 21(22):5008–5012. <https://doi.org/10.1158/1078-0432.CCR-15-0413>
- Pustynnikov S, Costabile F, Beghi S, Facciabene A (2018, December 1) Targeting mitochondria in cancer: current concepts and immunotherapy approaches. *Transl. Res.* Mosby Inc. <https://doi.org/10.1016/j.trsl.2018.07.013>
- Putta P, Rankenberg J, Korver RA, van Wijk R, Munnik T, Testerink C, Kooijman EE (2016) Phosphatidic acid binding proteins display differential binding as a function of membrane curvature stress and chemical properties. *Biochim. Biophys. Acta - Biomembr.* 1858(11):2709–2716. <https://doi.org/10.1016/j.bbmem.2016.07.014>
- Rajala, R. V. S., & Anderson, R. E. (2010, September). Focus on Molecules: Phosphatidylinositol-4,5-bisphosphate (PIP₂). *Exp. Eye Res.* NIH Public Access. <https://doi.org/10.1016/j.exer.2010.05.001>

- Reynaert H, De Coninck A, Neven AM, Van Camp B, Schots R (1992) Chemotherapy-induced acral erythema and acute graft-versus-host disease after allogeneic bone marrow transplantation. *Bone Marrow Transplant.* 10(2):185–187 Retrieved from <http://www.ncbi.nlm.nih.gov/pubmed/1388082>
- Rhee SG (2001) Regulation of Phosphoinositide-Specific Phospholipase C. *Annu. Rev. Biochem.* 70(1):281–312. <https://doi.org/10.1146/annurev.biochem.70.1.281>
- Ribas V, García-Ruiz C, Fernández-Checa JC (2016) Mitochondria, cholesterol and cancer cell metabolism. *Clin. Transl. Med.* 5(1). <https://doi.org/10.1186/s40169-016-0106-5>
- Rivel T, Ramseyer C, Yesylevskyy S (2019) The asymmetry of plasma membranes and their cholesterol content influence the uptake of cisplatin. *Sci. Rep.* 9(1):1–14. <https://doi.org/10.1038/s41598-019-41903-w>
- Rockenfeller P, Koska M, Pietrocola F, Minois N, Knittelfelder O, Sica V et al (2015) Phosphatidylethanolamine positively regulates autophagy and longevity. *Cell Death Differ.* 22(3):499–508. <https://doi.org/10.1038/cdd.2014.219>
- Rodwell, V. W., Bender, D. A., Botham, K. M., Kennelly, P. J., & Weil, P. A. (2015). Harper's illustrated biochemistry. Retrieved from <https://www.worldcat.org/title/harpers-illustrated-biochemistry/oclc/900011174>
- Rog T, Koivuniemi A (2016) The biophysical properties of ethanolamine plasmalogens revealed by atomistic molecular dynamics simulations. *Biochim. Biophys. Acta - Biomembr.* 1858(1):97–103. <https://doi.org/10.1016/j.bbamem.2015.10.023>
- Rothman JE, Lenard J (1977) Membrane asymmetry. *Science* (80) 195(4280):743–753. <https://doi.org/10.1126/science.402030>
- Sands JA, Lowlicht RA (1976) Temporal origin of viral phospholipids of the enveloped bacteriophage phi 6. *Can. J. Microbiol.* 22(2):154–158. <https://doi.org/10.1139/m76-021>
- Santana P, Peña LA, Haimovitz-Friedman A, Martin S, Green D, McLoughlin M et al (1996) Acid sphingomyelinase-deficient human lymphoblasts and mice are defective in radiation-induced apoptosis. *Cell* 86(2):189–199. [https://doi.org/10.1016/S0092-8674\(00\)80091-4](https://doi.org/10.1016/S0092-8674(00)80091-4)
- Segawa K, Nagata S (2015) An Apoptotic “Eat Me” Signal: Phosphatidylserine Exposure. *Trends Cell Biol.* Elsevier Ltd. <https://doi.org/10.1016/j.tcb.2015.08.003>
- Sezgin E, Levental I, Mayor S, Eggeling C (2017) The mystery of membrane organization: composition, regulation and roles of lipid rafts. *Nat. Rev. Mol. Cell Biol.* 18(6):361–374. <https://doi.org/10.1038/nrm.2017.16>
- Sharma A, Bandyopadhyaya S, Chowdhury K, Sharma T, Maheshwari R, Das A et al (2019) Metformin exhibited anticancer activity by lowering cellular cholesterol content in breast cancer cells. *PLoS One* 14(1):e0209435. <https://doi.org/10.1371/journal.pone.0209435>
- Sharma B, Kanwar SS (2018) Phosphatidylserine: A cancer cell targeting biomarker. *Semin. Cancer Biol.* Academic Press. <https://doi.org/10.1016/j.semcancer.2017.08.012>
- Shepherd J, Blauw GJ, Murphy MB, Bollen ELEM, Buckley BM, Cobbe SM et al (2002) Pravastatin in elderly individuals at risk of vascular disease (PROSPER): A randomised controlled trial. *Lancet* 360(9346):1623–1630. [https://doi.org/10.1016/S0140-6736\(02\)11600-X](https://doi.org/10.1016/S0140-6736(02)11600-X)
- Shindou, H., Hishikawa, D., Harayama, T., Yuki, K., & Shimizu, T. (2009). Recent progress on acyl CoA: Lysophospholipid acyltransferase research. *J. Lipid Res.* <https://doi.org/10.1194/jlr.R800035-JLR200>
- Shlomovitz I, Speir M, Gerlic M (2019) Flipping the dogma - Phosphatidylserine in non-apoptotic cell death. *Cell Commun. Signal.* BioMed Central Ltd. <https://doi.org/10.1186/s12964-019-0437-0>
- Shyu P, Ng BSH, Ho N, Chaw R, Seah YL, Marvalim C, Thibault G (2019) Membrane phospholipid alteration causes chronic ER stress through early degradation of homeostatic ER-resident proteins. *Sci. Rep.* 9(1). <https://doi.org/10.1038/s41598-019-45020-6>
- Shyu P, Wong XFA, Crasta K, Thibault G (2018, September 19) Dropping in on lipid droplets: Insights into cellular stress and cancer. *Biosci. Rep.* Portland Press Ltd. <https://doi.org/10.1042/BSR20180764>
- Signorell A, Jelk J, Rauch M, Bütikofer P (2008) Phosphatidylethanolamine is the precursor of the ethanolamine phosphoglycerol moiety bound to eukaryotic elongation factor 1A. *J. Biol. Chem.* 283(29):20320–20329. <https://doi.org/10.1074/jbc.M802430200>
- Simons K, Ehehalt R (2002) Cholesterol, lipid rafts, and disease. *J. Clin. Invest.* 110(5):597–603. <https://doi.org/10.1172/JCI16390>
- Siso-Nadal F, Fox JJ, Laporte SA, Hébert TE, Swain PS (2009) Cross-talk between signaling pathways can generate robust oscillations in calcium and cAMP. *PLoS One* 4(10):e7189. <https://doi.org/10.1371/journal.pone.0007189>
- Slotte JP, Ramstedt B (2007) The functional role of sphingomyelin in cell membranes. *Eur J Lipid Sci Technol* 109:977–981. <https://doi.org/10.1002/ejlt.200700024>
- Sola-Leyva A, López-Cara LC, Ríos-Marco P, Ríos A, Marco C, Carrasco-Jiménez MP (2019) Choline kinase inhibitors EB-3D and EB-3P interferes with lipid homeostasis in HepG2 cells. *Sci. Rep.* 9(1):1–13. <https://doi.org/10.1038/s41598-019-40885-z>
- Soler A, Figueiredo AM, Castel P, Martin L, Monelli E, Angulo-Urarte A et al (2016) Therapeutic Benefit of Selective Inhibition of p110α PI3-Kinase in Pancreatic Neuroendocrine Tumors. *Clin. Cancer Res.* 22(23):5805–5817. <https://doi.org/10.1158/1078-0432.CCR-15-3051>
- Srivatsav AT, Mishra M, Kapoor S (2018) Small-Molecule Modulation of Lipid-Dependent Cellular Processes Against Cancer: Fats on the Gunpoint. *Biomed Res. Int.* <https://doi.org/10.1155/2018/6437371>
- Stellacci E, Di Noia A, Di Baldassarre A, Migliaccio G, Battistini A, Migliaccio AR (2009) Interaction between the glucocorticoid and erythropoietin receptors in human erythroid cells. *Exp. Hematol.* 37(5):559–572. <https://doi.org/10.1016/j.exphem.2009.02.005>
- Stith BJ (2015, May 15) Phospholipase C and D regulation of Src, calcium release and membrane fusion during *Xenopus laevis* development. *Dev. Biol.* Academic Press Inc. <https://doi.org/10.1016/j.ydbio.2015.02.020>
- Stone SJ, Vance JE (2000) Phosphatidylserine synthase-1 and -2 are localized to mitochondria-associated membranes. *J. Biol. Chem.* 275(44):34534–34540. <https://doi.org/10.1074/jbc.M002865200>
- Stoppa G, Rumiato E, Saggioro D (2012) Ras signaling contributes to survival of human T-cell leukemia/lymphoma virus type 1 (HTLV-1) Tax-positive T-cells. *Apoptosis* 17(3):219–228. <https://doi.org/10.1007/s10495-011-0676-z>
- Supattapone S (2012) Phosphatidylethanolamine as a prion cofactor: Potential implications for disease pathogenesis. *Prion.* <https://doi.org/10.4161/pri.21826>
- Tan LTH, Chan KG, Pusparajah P, Lee WL, Chuah LH, Khan TM et al (2017) Targeting membrane lipid a potential cancer cure? *Front. Pharmacol.* 8(12):1–6. <https://doi.org/10.3389/fphar.2017.00012>
- Thapa N, Tan X, Choi S, Lambert PF, Rapraeger AC, Anderson RA (2016) The Hidden Conundrum of Phosphoinositide Signaling in Cancer. *Trends in Cancer.* Cell Press. <https://doi.org/10.1016/j.trecan.2016.05.009>
- Tsuchida J, Nagahashi M, Takabe K, Wakai T (2017) Clinical Impact of Sphingosine-1-Phosphate in Breast Cancer. *Mediators Inflamm.* Hindawi Limited. <https://doi.org/10.1155/2017/2076239>
- Vallianou N, Kostantinou A, Kougias M, Kazakis C (2014) Statins and Cancer. *Anticancer. Agents Med. Chem.* 14(5):706–712. <https://doi.org/10.2174/1871520613666131129105035>
- Van Blitterswijk WJ, Van Der Luit AH, Veldman RJ, Verheij M, Borst J (2003) Ceramide: Second messenger or modulator of membrane structure and dynamics? *Biochem. J.* <https://doi.org/10.1042/BJ20021528>

- Van Meer G (2005) Cellular lipidomics. *EMBO J.* 24(18):3159–3165. <https://doi.org/10.1038/sj.emboj.7600798>
- Van Meer G, Voelker DR, Feigenson GW (2008) Membrane lipids: Where they are and how they behave. *Nat. Rev. Mol. Cell Biol.* <https://doi.org/10.1038/nrm2330>
- Vance JE, Steenbergen R (2005) Metabolism and functions of phosphatidylserine. *Prog. Lipid Res.* 44(4):207–234. <https://doi.org/10.1016/j.plipres.2005.05.001>
- Wang H, Giuliano AE, Cabot MC (2002) Enhanced de novo ceramide generation through activation of serine palmitoyltransferase by the P-glycoprotein antagonist SDZ PSC 833 in breast cancer cells. *Mol. Cancer Ther.* 1(9):719–726 Retrieved from <http://www.ncbi.nlm.nih.gov/pubmed/12479368>
- Wang R, Bi J, Ampah KK, Ba X, Liu W, Zeng X (2013) Lipid rafts control human melanoma cell migration by regulating focal adhesion disassembly. *Biochim. Biophys. Acta - Mol. Cell Res.* 1833(12):3195–3205. <https://doi.org/10.1016/j.bbamer.2013.09.007>
- Wang X, Li N, Liu B, Sun H, Chen T, Li H et al (2004) A novel human phosphatidylethanolamine-binding protein resists tumor necrosis factor α -induced apoptosis by inhibiting mitogen-activated protein kinase pathway activation and phosphatidylethanolamine externalization. *J. Biol. Chem.* 279(44):45855–45864. <https://doi.org/10.1074/jbc.M405147200>
- Watters RJ, Wang H-G, Sung S-S, Loughran TP, Liu X, Liu X (2011) Targeting sphingosine-1-phosphate receptors in cancer. *Anticancer. Agents Med. Chem.* 11(9):810–817 Retrieved from <http://www.ncbi.nlm.nih.gov/pubmed/21707490> <http://www.ncbi.nlm.nih.gov/pubmed/21707490>
- Weiser BP, Salari R, Eckenhoff RG, Brannigan G (2014) Computational investigation of cholesterol binding sites on mitochondrial VDAC. *J. Phys. Chem. B* 118(33):9852–9860. <https://doi.org/10.1021/jp504516a>
- White-Gilbertson S, Mullen T, Senkal C, Lu P, Ogretmen B, Obeid L, Voelkel-Johnson C (2009) Ceramide synthase 6 modulates TRAIL sensitivity and nuclear translocation of active caspase-3 in colon cancer cells. *Oncogene* 28(8):1132–1141. <https://doi.org/10.1038/onc.2008.468>
- Wirtz KW, Van Kessel WS, Kamp HH, Demel RA (1976) The protein-mediated transfer of phosphatidylcholine between membranes. The effect of membrane lipid composition and ionic composition of the medium. *Eur. J. Biochem.* 61(2):515–523. <https://doi.org/10.1111/j.1432-1033.1976.tb10046.x>
- Wnętrzak A, Łątka K, Makyla-Juzak K, Zemla J, Dynarowicz-Łątka P (2015) The influence of an antitumor lipid – erucylphosphocholine – on artificial lipid raft system modeled as Langmuir monolayer. *Mol. Membr. Biol.* 32(5–8):189–197. <https://doi.org/10.3109/09687688.2015.1125537>
- Woodcock J (2006) Sphingosine and ceramide signalling in apoptosis. *IUBMB Life* 58(8):462–466. <https://doi.org/10.1080/15216540600871118>
- Wu CY, Lin MW, Wu DC, Huang YB, Huang HT, Chen CL (2014) The role of phosphoinositide-regulated actin reorganization in chemotaxis and cell migration. *Br. J. Pharmacol.* 171(24):5541–5554. <https://doi.org/10.1111/bph.12777>
- Wu T, Levine SJ, Lawrence MG, Logun C, Angus CW, Shelhamer JH (1994) Interferon- γ induces the synthesis and activation of cytosolic phospholipase A2. *J. Clin. Invest.* 93(2):571–577. <https://doi.org/10.1172/JCI117009>
- Xie G, Wang Z, Chen Y, Zhang S, Feng L, Meng F, Yu Z (2017) Dual blocking of PI3K and mTOR signaling by NVP-BEZ235 inhibits proliferation in cervical carcinoma cells and enhances therapeutic response. *Cancer Lett.* 388:12–20. <https://doi.org/10.1016/j.canlet.2016.11.024>
- Xu T, Ding W, Ji X, Ao X, Liu Y, Yu W, Wang J (2019) Molecular mechanisms of ferroptosis and its role in cancer therapy. *J. Cell. Mol. Med.* Blackwell Publishing Inc. <https://doi.org/10.1111/jcmm.14511>
- Xu, Y. (2018). Lysophospholipid signaling in the epithelial ovarian cancer tumor microenvironment. *Cancers* (Basel). MDPI AG. <https://doi.org/10.3390/cancers10070227>
- Yan Lim, J., & Yee Kwan, H. (2018). Roles of Lipids in Cancer. In *Lipid Metabolism* [Working Title]. IntechOpen. <https://doi.org/10.5772/intechopen.80788>
- Yang F, Chen GX (2018) Production of extracellular lysophosphatidic acid in the regulation of adipocyte functions and liver fibrosis. *World J. Gastroenterol.* 24(36):4132–4151. <https://doi.org/10.3748/wjg.v24.i36.4132>
- Yang M, Brackenbury WJ (2013) Membrane potential and cancer progression. *Front. Physiol.* 4:185. <https://doi.org/10.3389/fphys.2013.00185>
- Yang Z, Qin W, Chen Y, Yuan B, Song X, Wang B et al (2018) Cholesterol inhibits hepatocellular carcinoma invasion and metastasis by promoting CD44 localization in lipid rafts. *Cancer Lett.* 429: 66–77. <https://doi.org/10.1016/j.canlet.2018.04.038>
- Yeagle, P. L. (2016). Biogenesis of Membrane Lipids. In *The Membranes of Cells* (pp. 57–71). Elsevier. <https://doi.org/10.1016/b978-0-12-800047-2.00003-6>
- Yen HY, Hoi KK, Liko I, Hedger G, Horrell MR, Song W et al (2018) PtdIns(4,5)P2 stabilizes active states of GPCRs and enhances selectivity of G-protein coupling. *Nature* 559(7714):423–427. <https://doi.org/10.1038/s41586-018-0325-6>
- Yi M, Li J, Chen S, Cai J, Ban Y, Peng Q et al (2018) Emerging role of lipid metabolism alterations in Cancer stem cells. *J. Exp. Clin. Cancer Res.* BioMed Central Ltd. <https://doi.org/10.1186/s13046-018-0784-5>
- Young MM, Bui V, Chen C, Wang HG (2019) FTY720 induces non-canonical phosphatidylserine externalization and cell death in acute myeloid leukemia. *Cell Death Dis.* 10(11):1–14. <https://doi.org/10.1038/s41419-019-2080-5>
- Yu RK, Suzuki Y, Yanagisawa M (2010) Membrane glycolipids in stem cells. *FEBS Lett.* NIH Public Access. <https://doi.org/10.1016/j.febslet.2009.08.026>
- Zalba, S., & ten Hagen, T. L. M. (2017) Cell membrane modulation as adjuvant in cancer therapy. *Cancer Treat. Rev.* W.B. Saunders Ltd. <https://doi.org/10.1016/j.ctrv.2016.10.008>
- Zech T, Ejlsing CS, Gaus K, de Wet B, Shevchenko A, Simons K, Harder T (2009) Accumulation of raft lipids in T-cell plasma membrane domains engaged in TCR signalling. *EMBO J.* 28(5):466–476. <https://doi.org/10.1038/emboj.2009.6>
- Zhao Z, Hao D, Wang L, Li J, Meng Y, Li P et al (2019) CtBP promotes metastasis of breast cancer through repressing cholesterol and activating TGF- β signaling. *Oncogene* 38(12):2076–2091 <https://doi.org/10.1038/s41388-018-0570-z>
- Zheng K, Chen Z, Feng H, Chen Y, Zhang C, Yu J et al (2019) Sphingomyelin synthase 2 promotes an aggressive breast cancer phenotype by disrupting the homeostasis of ceramide and sphingomyelin. *Cell Death Dis.* 10(3). <https://doi.org/10.1038/s41419-019-1303-0>
- Zhu X, Jiang J, Shen H, Wang H, Zong H, Li Z et al (2005) Elevated β 1, 4-galactosyltransferase I in highly metastatic human lung cancer cells: Identification of E1AF as important transcription activator. *J. Biol. Chem.* 280(13):12503–12516. <https://doi.org/10.1074/jbc.M413631200>
- Zhuang L, Kim J, Adam RM, Solomon KR, Freeman MR (2005) Cholesterol targeting alters lipid raft composition and cell survival in prostate cancer cells and xenografts. *J. Clin. Invest.* 115(4):959–968. <https://doi.org/10.1172/JCI19935>

Publisher's note Springer Nature remains neutral with regard to jurisdictional claims in published maps and institutional affiliations.