



**HAL**  
open science

## **Pretreatment lesional volume impacts clinical outcome and thrombectomy efficacy**

Yu Xie, Catherine Oppenheim, Francis Guillemin, Vincent Gautheron, Benjamin Gory, H el ene Raoult, S ebastien Soize, Jacques Felblinger, Gabriela Hossu, Serge Bracard

► **To cite this version:**

Yu Xie, Catherine Oppenheim, Francis Guillemin, Vincent Gautheron, Benjamin Gory, et al.. Pretreatment lesional volume impacts clinical outcome and thrombectomy efficacy. *Annals of Neurology*, 2018, 83 (1), pp.178-185. 10.1002/ana.25133 . hal-03241420

**HAL Id: hal-03241420**



**<https://hal.univ-lorraine.fr/hal-03241420>**

Submitted on 28 May 2021

**HAL** is a multi-disciplinary open access archive for the deposit and dissemination of scientific research documents, whether they are published or not. The documents may come from teaching and research institutions in France or abroad, or from public or private research centers.

L'archive ouverte pluridisciplinaire **HAL**, est destin ee au d ep ot et  a la diffusion de documents scientifiques de niveau recherche, publi es ou non,  emanant des  tablissements d'enseignement et de recherche franais ou  trangers, des laboratoires publics ou priv es.

# Pretreatment Lesional Volume Impacts Clinical Outcome and Thrombectomy Efficacy

Yu Xie, MD, MSc,<sup>1</sup> Catherine Oppenheim, MD, PhD,<sup>2</sup>  
Francis Guillemin, MD, PhD,<sup>3</sup> Vincent Gautheron, MD,<sup>2</sup>  
Benjamin Gory, MD, PhD ,<sup>4</sup> H el ene Raoult, MD, PhD,<sup>5</sup>  
S ebastien Soize, MD, PhD,<sup>6</sup> Jacques Felblinger, PhD,<sup>1,7</sup>  
Gabriela Hossu, PhD,<sup>7</sup> and Serge Bracard, MD <sup>1,8</sup>;  
on behalf of the THRACE investigators

**Objective:** We aimed to characterize the association between pretreatment lesional volume measured on diffusion-weighted images and functional outcome, and estimate the impact on thrombectomy efficacy for ischemic stroke with anterior proximal intracranial arterial occlusion.

**Methods:** Anterior circulation ischemic stroke patients who had pretreatment diffusion-weighted imaging in the THRACE study were included. Lesional volume was semiautomatically segmented. Logistic regression was applied to model clinical outcome as a function of lesional volume. Outcomes included functional independence (modified Rankin Scale [mRS] 0–2), degree of disability (ordinal mRS 0–6), and mortality at 3 months.

**Results:** Of 298 included patients, with median lesional volume 17.2ml (interquartile range [IQR], 9.2–51.8) and median mRS 2 (IQR, 1–4), 51.0% achieved functional independence. Increased lesional volume was an independent predictor for a lower probability of functional independence (odds ratio [OR], 0.90 [95% confidence interval {CI}, 0.81–0.99] per 10ml;  $p < 0.001$ ), a less favorable degree of disability (common OR, 0.86 [95% CI, 0.81–0.90] per 10ml;  $p < 0.001$ ), and a higher mortality rate (OR, 1.21 [95% CI, 1.08–1.37] per 10ml;  $p < 0.001$ ). For additional thrombectomy, the number of patients needed to treat to achieve functional independence in 1 patient increased with lesional volume (10 for a volume of 80ml; 15 for 135ml). No significant treatment-by-dichotomized volume interaction for functional independence and mortality was observed.

**Interpretation:** Pretreatment lesional volume is an independent predictor for functional outcome in acute ischemic stroke with proximal intracranial occlusion. The clinical benefit of adding mechanical thrombectomy to thrombolysis decreased with the increase of lesional volume.

ANN NEUROL 2018;83:178–185

Recent randomized clinical trials have demonstrated the clinical benefit of mechanical thrombectomy (MT) in acute ischemic stroke patients with anterior

circulation proximal intracranial occlusions.<sup>1–8</sup> In the majority of these trials, patients were evaluated with computed tomography (CT) and selected by

View this article online at [wileyonlinelibrary.com](http://wileyonlinelibrary.com). DOI: 10.1002/ana.25133

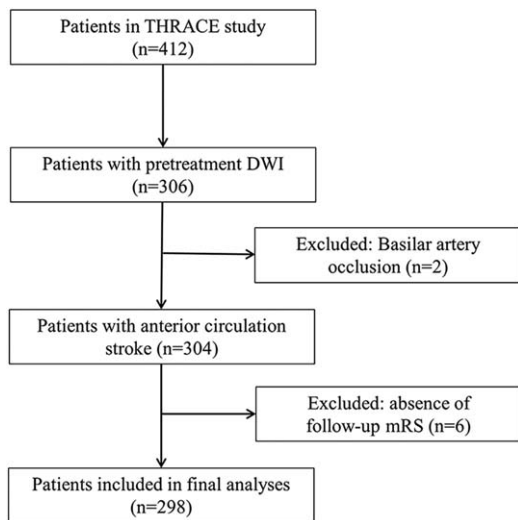
Received Oct 16, 2017, and in revised form Dec 28, 2017. Accepted for publication Dec 29, 2017.

Corresponding Author: Pr Serge Bracard, Department of Diagnostic and Interventional Neuroradiology, University Hospital of Nancy, 54035 Nancy, France. E-mail: [s.bracard@chru-nancy.fr](mailto:s.bracard@chru-nancy.fr)

From the <sup>1</sup>IADI, U1254, INSERM, Universit e de Lorraine, CHRU Nancy, Nancy, France; <sup>2</sup>Department of Neuroradiology, Sainte-Anne Hospital and Paris-Descartes University, INSERM U894, Paris, France; <sup>3</sup>CIC 1433 Epid emiologie Clinique, INSERM, Universit e de Lorraine, CHRU Nancy, Nancy, France; <sup>4</sup>INSERM U1237, “Physiopathology and Imaging for Neurological Disorders (PhIND)”, GIP Cyceron, Caen, France; <sup>5</sup>Department of Neuroradiology, University Hospital of Rennes, Rennes, France; <sup>6</sup>Department of Neuroradiology, University Hospital of Reims, Reims, France; <sup>7</sup>CIC 1433 Innovation Technologique, INSERM, Universit e de Lorraine, CHRU Nancy, Nancy, France; and <sup>8</sup>Department of Diagnostic and Interventional Neuroradiology, CHRU Nancy, Nancy, France

Please see a supplementary file for the list of THRACE study investigators and their affiliations.

Additional supporting information can be found in the online version of this article.



**FIGURE 1: Patient selection flowchart.** DWI = diffusion-weighted imaging; mRS = modified Rankin Scale.

pretreatment ASPECTS (Alberta Stroke Program Early CT Score) threshold, and patients with large stroke volume were excluded. Infarct volume at follow-up was shown to be a prognostic biomarker<sup>9–11</sup>; however, uncertainty remained as to the optimal baseline imaging profile for favorable clinical outcome after MT. Extensive data from previous studies support diffusion-weighted imaging (DWI) as the most accurate imaging sequence available for estimating the ischemic core in acute ischemic stroke patients.<sup>12</sup> To date, evidence with regard to the association between pretreatment lesional volume measured on DWI and functional outcome is relatively weak and is limited to retrospective single-center studies and thrombolysis therapy.<sup>13–16</sup> Moreover, the effect of pretreatment lesional volume on the benefit of MT has yet to be determined.

The THRACE study<sup>6</sup> provided a unique opportunity to evaluate the association between pretreatment lesional volume measured on DWI and both functional outcome and MT efficacy, because of the use of DWI in pretreatment imaging in a large proportion of patients and the absence of exclusion criteria on the basis of pretreatment lesional volume.

In this substudy, we aimed to characterize the relationship between pretreatment lesional volume measured on DWI and the functional outcome of ischemic stroke, and estimate the impact of pretreatment lesional volume on MT efficacy for acute ischemic stroke due to proximal intracranial arterial occlusion.

## Patients and Methods

### Study Design and Participants

The THRACE study (Clinical Trial Registration-URL: <http://www.clinicaltrials.gov>; unique identifier: NCT01062698) was a

randomized, controlled trial done in 26 centers in France, comparing intravenous thrombolysis plus MT (IVTMT) and intravenous thrombolysis alone (IVT) in patients with acute ischemic stroke attributed to proximal arterial occlusion, aged 18 to 80 years, and with an NIHSS (National Institutes of Health Stroke Scale) score of 10 to 25. The study design and patient inclusion criteria have been described in detail previously.<sup>6</sup> The study protocol was approved by the CPP (Comité de Protection des Personnes) Est III Ethics Committee and the research boards of the participating centers. All patients or their legal representatives provided written informed consent. In our THRACE substudy, we included anterior circulation stroke patients who had pretreatment DWI.

### Imaging and Clinical Assessment

Pretreatment infarct lesions were semiautomatically segmented by Olea Sphere (Olea Medical SAS, La Ciotat, France) after applying a threshold of apparent diffusion coefficient (ADC) of  $0.6 \times 10^{-3} \text{ mm}^2/\text{s}$  on ADC maps,<sup>17–19</sup> which were calculated from DWI acquisitions. All the lesion masks were confirmed by two neuroradiologists and were manually corrected, if necessary.

Demographic and clinical data and functional outcome were extracted from the THRACE database. Primary outcome was the proportion of patients achieving functional independence at 3 months, defined by a score of 0 to 2 on the modified Rankin Scale (mRS; ranging from 0 [no symptoms] to 6 [death]). Secondary outcomes were (1) degree of disability at 3 months, assessed by the ordinal mRS from 0 to 6 with ranks 5 and 6 combined into a single category, and (2) mortality at 3 months. Cerebral reperfusion was assessed by angiography and reviewed by three experienced interventional neuroradiologists under a consensus evaluation for patients who received thrombectomy. Substantial reperfusion was defined as a modified Thrombolysis in Cerebral Infarction (mTICI) scale score of 2b or 3, corresponding to reperfusion of at least 50% of the affected vascular territory.

### Statistical Analysis

Baseline characteristics and functional outcome were compared between patients in the IVT group and the IVTMT group. Non-Gaussian continuous variables are presented as median and interquartile range (IQR) while categorical variables are presented as proportions. Comparisons were performed by Wilcoxon test and chi-square test, respectively.  $p$  values were two-sided and  $p = 0.05$  was chosen as the significance level.

**ASSOCIATION BETWEEN PRETREATMENT LESIONAL VOLUME AND FUNCTIONAL OUTCOME.** Univariate and multivariate logistic analyses evaluated the association between lesional volume and clinical outcomes (binomial logistic regression for binarized mRS and ordinal logistic regression for ordinal mRS). Factors that had predictive value for clinical outcome in the main THRACE study<sup>6</sup> (age, baseline NIHSS score, occlusion location, ASPECTS, blood glucose, and Fazekas score) were included as covariates in the present analysis. Variables with a  $p$  value  $< 0.20$  in univariate analysis were included in the multivariate model. The final model was

TABLE 1. Demographic and Clinical Baseline Characteristics of Patients

	All Patients (n = 304)	IVT Group (n = 155)	IVTMT Group (n = 149)	p
Age, years	67 (54–74)	68 (54–75)	67 (54–74)	0.64
Male sex	159/304 (52.3)	72/155 (46.5)	87/149 (58.4)	0.05
Diabetes mellitus	31/301 (10.3)	21/155 (13.5)	10/146 (6.8)	0.09
Hypertension	155/301 (51.5)	86/155 (55.5)	69/146 (47.3)	0.19
Tobacco (current or past)	117/274 (42.7)	56/142 (39.4)	61/132 (46.2)	0.31
Hypercholesterolemia	142/271 (52.4)	80/142 (56.3)	62/129 (48.1)	0.21
Coronary disease	42/290 (14.5)	22/148 (14.9)	20/142 (14.1)	0.98
History of stroke	19/294 (6.5)	10/153 (6.5)	9/141 (6.4)	0.99
Admission blood glucose, g/l	1.2 (1.0–1.4)	1.2 (1.0–1.4)	1.2 (1.0–1.4)	0.69
Admission NIHSS score	18 (14–20)	17 (14–21)	18 (14–20)	0.83
Time from stroke onset to imaging, min	114 (89–139)	113 (92–140)	114 (86–139)	0.54
Time from stroke onset to randomization, min	166 (139–195)	168 (138–198)	165 (143–194)	0.72
Occlusion location, ICA:M1	47:257	31:124	16:133	0.04*
ASPECT score	7 (5–9)	7 (5–9)	7 (6–8)	0.89
Fazekas score	1 (0–1)	1 (0–2)	1 (0–1)	0.11
Infarct laterality, left hemisphere	145/304 (47.7)	69/155 (44.5)	76/149 (51.0)	0.31

Continuous variables are presented as median (interquartile range); categorical variables are presented as no. (%).  
\* $p < 0.05$ .  
IVT = intravenous thrombolysis; IVTMT = intravenous thrombolysis plus mechanical thrombectomy; NIHSS = National Institutes of Health Stroke Scale; ICA = intracranial internal carotid artery; M1 = proximal portion of middle cerebral artery; ASPECT = Alberta Stroke Program Early CT Score.

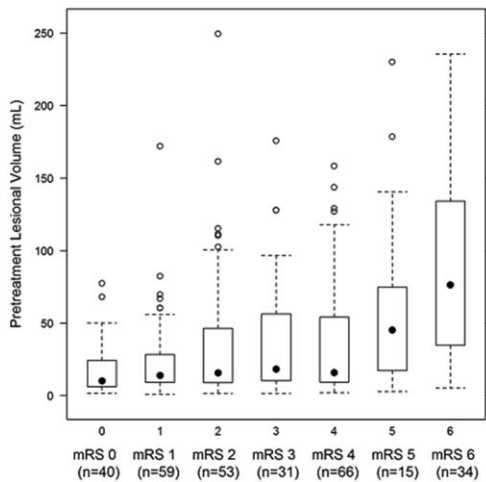
selected using Akaike's information criterion (AIC). Adjusted odds ratios (ORs) or common odds ratios (cORs) with 95% confidence intervals (CIs) were calculated. The estimated probability of achieving functional independence according to age, baseline NIHSS score, and lesional volume for each patient was depicted by three-dimensional scatterplots. Fitted surfaces were added to describe the association between age, baseline NIHSS score, and lesional volume on the likelihood of functional independence. The reperfusion status was also included in the model in a per-protocol analysis of the IVTMT group (patients assigned to the IVTMT group who did not have thrombectomy were excluded from the analysis).

**ASSOCIATION BETWEEN PRETREATMENT LESIONAL VOLUME AND THROMBECTOMY EFFICACY ON FUNCTIONAL OUTCOME.** The association between pretreatment lesional volume and functional independence was evaluated in the IVTMT group and compared with the IVT group. The number needed to treat (NNT)<sup>20</sup> was calculated to estimate the number of patients needed to treat to obtain 1 patient

achieving functional independence after thrombectomy through the range of lesional volume. The interaction of treatment-by-dichotomized lesional volume for functional independence and mortality was assessed with two volume thresholds suggested in previous studies: 70 and 100ml.<sup>15,21</sup> All the statistical analyses were performed using statistical software R (version 3.3.2; R Foundation for Statistical Computing, Vienna, Austria).

## Results

Of 412 patients in the THRACE study, 304 met the inclusion criteria (106 patients without pretreatment DWI examination and 2 with basilar artery occlusion were excluded; Fig 1), including 155 (51.0%) patients in the IVT group and 149 (49.0%) in the IVTMT group. The cohort was composed of 159 (52.3%) men and had a median age of 67 (IQR, 54–74) years. Baseline characteristics of the included patients are presented in Table 1. No significant differences in baseline characteristics were



**FIGURE 2:** Box-and-whisker plot showing the distribution of the pretreatment lesional volume for each modified Rankin Scale (mRS) category. The boundaries of the box indicate the 25th and 75th percentiles and the black dots indicate the median values. The whiskers represent the lowest and highest values in the 25th percentile minus 1.5 interquartile range (IQR) and 75th percentile plus 1.5 IQR, respectively. Circles indicate outliers.

observed between the two groups except for the occlusion location.

Furthermore, 6 patients without follow-up mRS evaluation were excluded, leaving 298 patients (IVTMT group, n = 148; IVT group, n = 150) for the subsequent analyses (median age, 67 years [IQR, 54–74]; women, 47.3%).

**Association Between Pretreatment Lesional Volume and Functional Outcome**

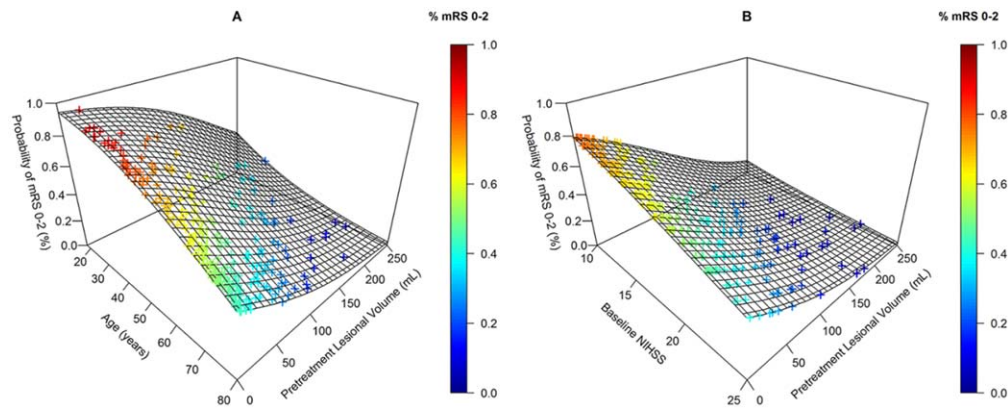
For the 298 patients, median pretreatment lesional volume was 17.2ml (IQR, 9.2–51.8) and median mRS was 2 (IQR, 1–4), with 152 (51.0%) achieving functional independence at 3 months. The distribution of lesional volume for each mRS category is shown in Figure 2. Increased ordinal mRS was associated with a larger lesional volume (Spearman’s  $\rho$  correlation coefficient, 0.34;  $p < 0.0001$ ). Best regression models for the association between pretreatment lesional volume and functional outcomes and death are presented in Table 2. Lesional volume, together with age, baseline NIHSS score, intracranial occlusion location, and blood glucose level, were independent predictors for both functional independence and degree of disability. ASPECTS was not chosen to be part of the final regression model after the model selection using the AIC. The probability of achieving functional independence decreased with the increase of lesional volume (per 10ml: OR, 0.90; 95% CI, 0.81–0.99;  $p < 0.001$ ). The degree of disability increased with the increase of lesional volume (per 10ml: cOR, 0.86; 95% CI, 0.81–0.90;  $p < 0.001$ ). The associations between lesional volume, age, baseline NIHSS score, and adjusted probability of functional independence were depicted by three-dimensional scatterplots with fitted surfaces (Fig 3). The mortality rate increased with the increase of lesional volume (per 10ml: OR, 1.21; 95% CI, 1.08–1.37;  $p < 0.001$ ). When the reperfusion status was included as covariate in the per-protocol

**TABLE 2. Multivariate Logistic Models for the Association Between Pretreatment lesional volume with Functional Independence, Degree of Disability, and Mortality at 3 Months**

	OR (95% CI) for Functional Independence	<i>p</i>	cOR (95% CI) for Degree of Disability	<i>p</i>	OR (95% CI) for Mortality	<i>p</i>
Age	0.96 (0.93–0.98)	0.001	0.97 (0.95–0.99)	0.001	1.06 (1.02–1.11)	0.002
Baseline NIHSS score	0.89 (0.83–0.95)	0.001	0.91 (0.86–0.96)	0.001		
Occlusion location (M1)	3.03 (1.31–7.52)	0.011	2.04 (1.12–3.72)	0.020		
Blood glucose level	0.38 (0.17–0.81)	0.020	0.62 (0.37–0.99)	0.054		
Fazekas score	0.76 (0.55–1.04)	0.099	0.84 (0.65–1.08)	0.171		
Lesional volume (per 10ml)	0.90 (0.80–0.99)	<0.001	0.86 (0.81–0.90)	<0.001	1.21 (1.08–1.37)	<0.001

Functional independence was defined by a modified Rankin Scale score 0 to 2 at 3 months. Degree of disability was assessed by ordinal modified Rankin Scale scores ranging from 0 to 6, with ranks 5 and 6 combined into a single category. Patients with missing values (n = 12) were excluded from this analysis.  
 NIHSS = National Institutes of Health Stroke Scale; M1 = proximal portion of middle cerebral artery; OR = odds ratio; cOR = common odds ratio; CI = confidence interval.





**FIGURE 3:** Three-dimensional scatterplots with fitted surfaces illustrating the association between age (A) or baseline NIHSS score (B), and pretreatment lesional volume, and adjusted probability of functional independence (mRS 0–2) at 3 months. The colored crosses indicate the estimated probability of functional independence for each patient in our cohort. mRS = modified Rankin Scale; NIHSS = National Institutes of Health Stroke Scale.

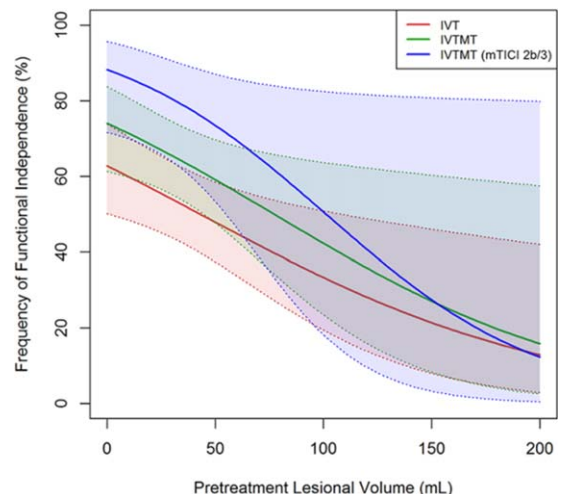
analysis ( $n = 100$ ), the increase of lesional volume was still associated with a decreased probability of functional independence (per 10ml: OR, 0.87; 95% CI, 0.75–0.99;  $p = 0.05$ ) and an increased degree of disability (per 10ml: cOR, 0.90; 95% CI, 0.80–0.99;  $p = 0.04$ ).

#### Association Between Pretreatment Lesional Volume and Thrombectomy Efficacy on Functional Outcome

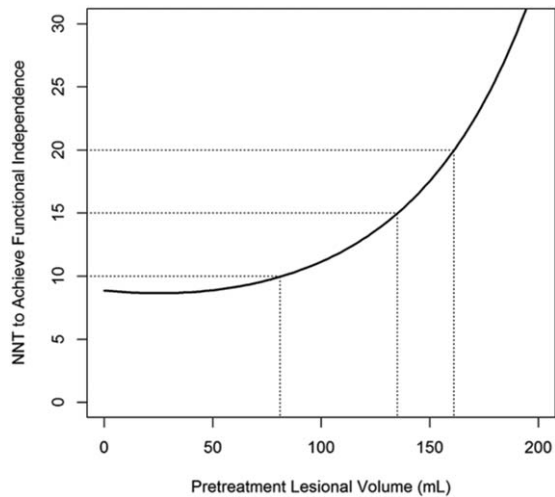
The median pretreatment lesional volume was 18.4ml (IQR, 9.9–45.3) in the IVTMT group, and 15.5ml (IQR, 8.7–60.1) in the IVT group ( $p = 0.96$ ). The median NIHSS score at 24 hours was 9 (IQR, 4–18) in the IVTMT group, and 12 (IQR, 6–19) in the IVT group ( $p = 0.08$ ). The median mRS was 2 (IQR, 1–4) in the IVTMT group, and 3 (IQR, 1–4) in the IVT group ( $p = 0.21$ ). Compared to IVT alone, IVTMT increased the proportion of patients achieving functional independence by 11.4% (95% CI [–0.5; 23.4];  $p = 0.06$ ). In the IVTMT group, 46 (63.9%) of 72 patients achieving substantial reperfusion and 7 (25.0%) of 28 without substantial reperfusion had functional independence at 3 months. Substantial reperfusion increased the proportion of patients achieving functional independence by 38.9% (95% CI [16.9; 60.9];  $p = 0.001$ ). With the increase of pretreatment lesional volume, the probability of achieving functional independence decreased in both the IVTMT group and the IVT group (Fig 4). Adjusted OR for lesional volume per 10 mL was 0.87 (95% CI, 0.77–0.98;  $p = 0.02$ ) in the IVTMT group, 0.89 (95% CI, 0.80–0.97;  $p = 0.01$ ) in the IVT group and 0.82 (95% CI, 0.66–0.98;  $p = 0.047$ ) for patients in the IVTMT group who achieved substantial reperfusion. The NNT for 1 patient achieving functional independence through IVTMT increased with pretreatment lesional volume:

from 10 with a lesional volume of approximately 80ml to 15 with 135ml and 20 with 160ml (Fig 5).

In the pretreatment lesional volume  $\leq 70$  mL subgroup ( $n = 245$ ), additional MT increased the proportion of patients achieving functional independence by 10.5% (95% CI [–2.7; 23.7];  $p = 0.13$ ), and by 1.9% (95% CI [–23.2; 27.0];  $p = 0.99$ ) for pretreatment lesional volume

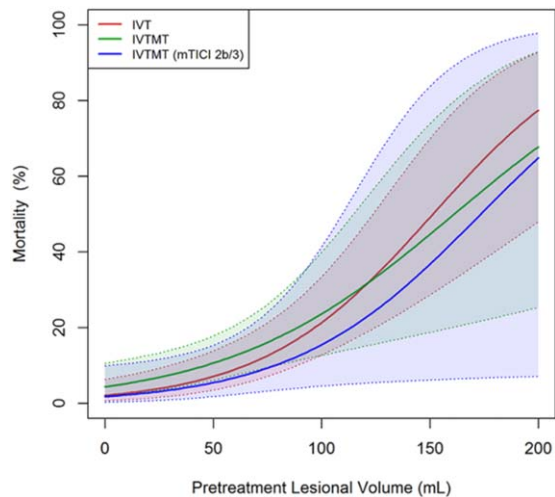


**FIGURE 4:** Probability of functional independence according to pretreatment lesional volume, by treatment group. Curves were obtained from binomial logistic regression of functional independence (defined by modified Rankin Score 0–2) at 3 months on pretreatment lesional volume as a continuous variable, adjusted for age, baseline NIHSS score, occlusion location of proximal portion of middle cerebral artery, and blood glucose level. The solid lines showed the model results from the logistic regression analysis, with 95% CIs shown in the color-corresponding dashed lines. Red lines indicate patients in intravenous thrombolysis (IVT) group; green lines indicate patients in intravenous thrombolysis plus mechanical thrombectomy (IVTMT) group; blue line indicates patients in IVTMT group who achieved substantial reperfusion (modified Thrombolysis in Cerebral Infarction [mTICI] Scale score 2b or 3). CI = confidence interval; NIHSS = National Institutes of Health Stroke Scale.



**FIGURE 5:** Number needed to treat (NNT) for 1 patient achieving functional independence (mRS 0–2) through mechanical thrombectomy according to pretreatment lesion volume. Lesional volume was treated as a continuous variable; the model was adjusted for age, baseline NIHSS score, occlusion location of proximal portion of middle cerebral artery, and blood glucose level. The corresponding lesion volume when NNT was 10, 15, and 20 are shown by dotted lines. mRS = modified Rankin Scale; NIHSS = National Institutes of Health Stroke Scale.

>70ml (n = 53). The increased proportion was 9.2% (95% CI [–3.6; 22.0];  $p = 0.17$ ) for pretreatment lesion volume  $\leq 100$ ml (n = 261), and 5.0% (95% CI [–29.1;



**FIGURE 6:** Probability of mortality according to pretreatment lesion volume, by treatment group. Curves were obtained from binomial logistic regression of mortality on pretreatment lesion volume as a continuous variable, adjusted for age. The solid lines show the model results from the logistic regression analysis, with 95% CIs shown in the color-corresponding dotted lines. Red lines indicate patients in the intravenous thrombolysis (IVT) group; green lines indicate patients in the intravenous thrombolysis plus mechanical thrombectomy (IVTMT) group; blue line indicates patients in the IVTMT group who achieved substantial reperfusion (modified Thrombolysis in Cerebral Infarction [mTICI] Scale score 2b or 3). CI = confidence interval.

39.1];  $p = 0.99$ ) for pretreatment lesion volume  $> 100$ ml (n = 37). We noted no significant treatment-by-dichotomized lesion volume interaction for functional independence (dichotomized by pretreatment lesion volume of 70ml: OR, 0.99; 95% CI, 0.19–5.42,  $p = 0.99$ ; dichotomized by pretreatment lesion volume of 100ml: OR, 0.98; 95% CI, 0.16–6.74;  $p = 0.99$ ). Besides, NNT for 1 patient achieving functional independence through MT compared with thrombolysis alone was similar for patients who had pretreatment lesion volume  $\leq 70$ ml or  $\leq 100$ ml (Fig 5).

The mortality rate was 10.8% (16 of 148) in the IVTMT group and 12.0% (18 of 150) in the IVT group ( $p = 0.89$ ). After adjustment for age, the mortality rate increased with the increase of pretreatment lesion volume (per 10ml: IVTMT group: OR, 1.21; 95% CI, 1.07–1.38;  $p = 0.003$ ; IVT group: OR, 1.29; 95% CI, 1.17–1.45;  $p < 0.001$ ; IVTMT group patients with substantial reperfusion: OR, 1.26; 95% CI, 1.01–1.60;  $p = 0.04$ ; Fig 6). No significant treatment-by-dichotomized pretreatment lesion volume interaction was observed for mortality (dichotomized by pretreatment lesion volume of 70ml: OR, 0.42; 95% CI, 0.08–2.12;  $p = 0.30$ ; dichotomized by pretreatment lesion volume of 100ml: OR, 0.23; 95% CI, 0.03–1.39;  $p = 0.12$ ).

## Discussion

Our study emphasizes the importance of pretreatment lesion volume to predict disability and mortality at 3 months in patients with acute ischemic stroke attributed to proximal intracranial arterial occlusion. Prediction of clinical outcome at the acute stage of ischemic stroke has a number of clinical benefits, ranging from determining optimal therapeutic intervention to informing patients and their family of possible consequences, as well as optimizing patient inclusion criteria for clinical trials.

DWI has been established as the most useful imaging sequence for estimating the ischemic core at the acute stage, because of its high diagnostic sensitivity and specificity, as well as its nonionizing nature.<sup>12</sup> The results of our THRACE substudy could have implications for clinical routine on account of the semiautomatic volumetric assessment for ischemic lesions in a large population, which was reliable and also easily applicable in a clinical setting. Moreover, patients in the IVTMT group were treated with last-generation MT devices and achieved a high proportion of early reperfusion.

Our study produced four main findings. First, as expected, pretreatment lesion volume was an independent predictor for clinical disability and mortality in our

cohort, even when reperfusion status was taken into consideration (in the IVTMT group). This result was in accord with previous studies.<sup>13–15</sup> In a retrospective analysis of the Bernese stroke registry, including magnetic resonance imaging (MRI) triage of stroke patients, Gilgen et al<sup>14</sup> observed that the volume of DWI lesions was an independent predictor of unfavorable outcome and survival. The three-dimensional scatterplots with fitted surfaces in our study also illustrate the clear association between pretreatment lesional volume and functional independence at 3 months, according to age and initial stroke severity. Even with young age and mild neurological deficit, which are two well-known predictive factors for a favorable functional outcome,<sup>22</sup> the probability of achieving functional independence was lower in patients with a large pretreatment lesional volume.

Second, with the increase of pretreatment lesional volume, the NNT to obtain 1 patient achieving 3-month functional independence with IVTMT increased, indicating that the benefit of adding MT to thrombolysis decreased. Also of note, the proportion of patients achieving functional independence in the IVTMT group was always superior to that in the IVT group. Therefore, we can infer the benefit of thrombectomy regardless of pretreatment lesional volume.

Third, previous studies have suggested that patients with a pretreatment lesional volume superior to 70ml present a poorer outcome,<sup>15,16</sup> and 100ml has also been proposed as a potential threshold for patient selection.<sup>21</sup> After dichotomizing patients by lesional volume of 70 and 100ml, we observed a trend of greater benefit of MT in the subgroups with the smaller volume. However, the nonsignificant treatment-by-dichotomized lesional volume interaction for functional independence and mortality suggests that excluding patients based on a simple volume threshold would be unadvisable. It is worth noting that although patients with a large pretreatment lesional volume represented a small proportion of our cohort (53 patients with pretreatment lesional volume >70ml), our results were robust because of the absence of exclusion criteria based on pretreatment lesional volume. Our result is similar to that of a subgroup analysis of the MR CLEAN trial, which found that patients with relatively large estimated pretreatment lesional volume (evaluated by ASPECTS) should be treated, but they included only 30 patients with CT ASPECTS <5.<sup>23</sup>

Fourth, we confirmed the importance of substantial reperfusion for a favorable functional outcome, as previously reported elsewhere.<sup>13,14</sup> Gilgen et al<sup>14</sup> reported that a favorable outcome was achieved in every third patient with DWI lesions >70ml after successful reperfusion,

but in only every 12th patient after poor or failed reperfusion. Olivot et al<sup>13</sup> also proved that complete recanalization was associated with a more favorable outcome; however, patients were mainly treated with thrombolysis. In our study, substantial reperfusion significantly increased the proportion of patients achieving functional independence. However, reperfusion status was only investigated in a per-protocol analysis of the IVTMT group, because of the absence of this information for patients in the IVT group and for patients in the IVTMT group who did not receive thrombectomy, because they were not monitored with angiography.

Our study has several limitations. First, a relatively smaller treatment effect of MT than in other randomized clinical trials was observed in the THRACE study, likely attributed to the shorter randomization delay and longer time to groin puncture. We only selected a part of the patients, which might explain the nonsignificant effect of MT on functional independence in our cohort. Moreover, the small number of patients with a large pretreatment lesional volume in our cohort may have resulted in a misestimate of the treatment-by-dichotomized lesional volume interaction. Despite this limitation, our results were robust on account of the absence of exclusion criteria based on pretreatment lesional volume. Second, we selected predefined lesional volume thresholds (70 and 100ml) to test treatment-by-volume interaction according to previous studies; the question of a cohort-specific threshold should be investigated. Third, standardized follow-up data at 24 hours are not available in THRACE. This is because imaging modality in THRACE study was determined according to the local routine at each participating center. A majority of the patients only received follow-up CT examinations at 24 hours instead of MRI. In the end, we only analyzed patients who had pretreatment DWI in the THRACE study. However, CT remains the routine first-line modality in acute stroke evaluation, because it is faster and is easier to access in most of the stroke centers. A further substudy of the THRACE trial is planned to elucidate the influence of the two imaging modalities on clinical outcome.

In conclusion, the results of this subgroup analysis of the THRACE study confirmed the independent value of pretreatment lesional volume in predicting functional outcome in ischemic stroke patients post-MT. The clinical benefit of adding MT to thrombolysis decreased as the pretreatment lesional volume increased. However, excluding patients from treatment according to simple pretreatment lesional volume thresholds would appear unadvisable.



## Acknowledgment

The THRACE study was funded by the French Ministry for Health as part of its 2009 STIC program for the support of costly innovations (grant number 2009 A00753-54). Yu Xie is sponsored by the China Scholarship Council.

We thank Farhat Benbelkacem and Raphaël Petazzoni (Olea Medical) for their help in image postprocessing.

## Author Contributions

Y.X., C.O., F.G., and S.B. contributed to the conception and design of the study. Acquisition and analysis of data were performed by Y.X., C.O., F.G., V.G., H.R., S.S., G.H., and S.B. Y.X., C.O., F.G., B.G., J.F., and S.B. drafted text and/or prepared figures.

## Potential Conflicts of Interest

Nothing to report.

## References

- Berkhemer OA, Fransen PS, Beumer D, et al. A randomized trial of intraarterial treatment for acute ischemic stroke. *N Engl J Med* 2015;372:11–20.
- Saver JL, Goyal M, Bonafe A, et al. Stent-retriever thrombectomy after intravenous t-PA vs. t-PA alone in stroke. *N Engl J Med* 2015;372:2285–2295.
- Goyal M, Demchuk AM, Menon BK, et al. Randomized assessment of rapid endovascular treatment of ischemic stroke. *N Engl J Med* 2015;372:1019–1030.
- Campbell BC, Mitchell PJ, Kleinig TJ, et al. Endovascular therapy for ischemic stroke with perfusion-imaging selection. *N Engl J Med* 2015;372:1009–1018.
- Jovin TG, Chamorro A, Cobo E, et al. Thrombectomy within 8 hours after symptom onset in ischemic stroke. *N Engl J Med* 2015;372:2296–2306.
- Bracard S, Ducrocq X, Mas JL, et al. Mechanical thrombectomy after intravenous alteplase versus alteplase alone after stroke (THRACE): a randomised controlled trial. *Lancet Neurol* 2016;15:1138–1147.
- Muir KW, Ford GA, Messow CM, et al. Endovascular therapy for acute ischaemic stroke: the Pragmatic Ischaemic Stroke Thrombectomy Evaluation (PISTE) randomised, controlled trial. *J Neurol Neurosurg Psychiatry* 2017;88:38–44.
- Goyal M, Menon BK, van Zwam WH, et al. Endovascular thrombectomy after large-vessel ischaemic stroke: a meta-analysis of individual patient data from five randomised trials. *Lancet* 2016;387:1723–1731.
- Bucker A, Boers AM, Bot JC, et al. Associations of ischemic lesion volume with functional outcome in patients with acute ischemic stroke. *Stroke* 2017;48:1233–1240.
- Al-Ajlan FS, Goyal M, Demchuk AM, et al. Intra-arterial therapy and post-treatment infarct volumes: insights from the ESCAPE Randomized Controlled Trial. *Stroke* 2016;47:777–781.
- Albers GW, Goyal M, Jahan R, et al. Relationships between imaging assessments and outcomes in solitaire with the intention for thrombectomy as primary endovascular treatment for acute ischemic stroke. *Stroke* 2015;46:2786–2794.
- Edlow JA. Evidence-based guideline: the role of diffusion and perfusion MRI for the diagnosis of acute ischemic stroke: report of the Therapeutics and Technology Subcommittee of the American Academy of Neurology. *Neurology* 2011;76:177–185.
- Olivot JM, Mosimann PJ, Labreuche J, et al. Impact of diffusion-weighted imaging lesion volume on the success of endovascular reperfusion therapy. *Stroke J Cereb Circ* 2013;44:2205–2211.
- Gilgen MD, Klimek D, Liesirova KT, et al. Younger stroke patients with large pretreatment diffusion-weighted imaging lesions may benefit from endovascular treatment. *Stroke* 2015;46:2510–2516.
- Yoo AJ, Verduzco LA, Schaefer PW, et al. MRI-based selection for intra-arterial stroke therapy: value of pretreatment diffusion-weighted imaging lesion volume in selecting patients with acute stroke who will benefit from early recanalization. *Stroke J Cereb Circ* 2009;40:2046–2054.
- Šaňák D, Nosál' V, Horák D, et al. Impact of diffusion-weighted MRI-measured initial cerebral infarction volume on clinical outcome in acute stroke patients with middle cerebral artery occlusion treated by thrombolysis. *Neuroradiology* 2006;48:632–639.
- Straka M, Albers GW, Bammer R. Real-time diffusion-perfusion mismatch analysis in acute stroke. *J Magn Reson Imaging* 2010;32:1024–1037.
- Lansberg MG, Straka M, Kemp S, et al. MRI profile and response to endovascular reperfusion after stroke (DEFUSE 2): a prospective cohort study. *Lancet Neurol* 2012;11:860–867.
- Nael K, Knitter JR, Jahan R, et al. Multiparametric magnetic resonance imaging for prediction of parenchymal hemorrhage in acute ischemic stroke after reperfusion therapy. *Stroke* 2017;48:664–670.
- Cook RJ, Sackett DL. The number needed to treat: a clinically useful measure of treatment effect. *BMJ* 1995;310:452–454.
- Schaefer PW, Pulli B, Copen WA, et al. Combining MRI with NIHSS thresholds to predict outcome in acute ischemic stroke: value for patient selection. *AJNR Am J Neuroradiol* 2015;36:259–264.
- Saposnik G, Guzik AK, Reeves M, et al. Stroke Prognostication using Age and NIH Stroke Scale: SPAN-100. *Neurology* 2013;80:21–28.
- Yoo AJ, Berkhemer OA, Fransen PSS, et al. Effect of baseline Alberta Stroke Program Early CT Score on safety and efficacy of intra-arterial treatment: a subgroup analysis of a randomised phase 3 trial (MR CLEAN). *Lancet Neurol* 2016;15:685–694.