



HAL
open science

Epidemiology of heart failure and long-term follow-up outcomes in a north-African population: Results from the NATional TUNisian REgistry of Heart Failure (NATURE-HF)

Leila Abid, Salma Charfeddine, Ikram Kammoun, Manel Ben Halima, Hedi Ben Slima, Meriem Drissa, Khadija Mzoughi, Dorra Mbarek, Leila Riahi, Saoussen Antit, et al.

► **To cite this version:**

Leila Abid, Salma Charfeddine, Ikram Kammoun, Manel Ben Halima, Hedi Ben Slima, et al.. Epidemiology of heart failure and long-term follow-up outcomes in a north-African population: Results from the NATional TUNisian REgistry of Heart Failure (NATURE-HF). PLoS ONE, 2021, 16 (5), pp.e0251658. 10.1371/journal.pone.0251658 . hal-03258487

HAL Id: hal-03258487

<https://hal.univ-lorraine.fr/hal-03258487>

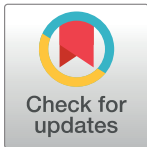
Submitted on 11 Jun 2021

HAL is a multi-disciplinary open access archive for the deposit and dissemination of scientific research documents, whether they are published or not. The documents may come from teaching and research institutions in France or abroad, or from public or private research centers.

L'archive ouverte pluridisciplinaire **HAL**, est destinée au dépôt et à la diffusion de documents scientifiques de niveau recherche, publiés ou non, émanant des établissements d'enseignement et de recherche français ou étrangers, des laboratoires publics ou privés.

RESEARCH ARTICLE

Epidemiology of heart failure and long-term follow-up outcomes in a north-African population: Results from the NATional Tunisian REgistry of Heart Failure (NATURE-HF)



Leila Abid^{1*}, Salma Charfeddine², Ikram Kammoun³, Manel Ben Halima⁴, Hedi Ben Slima⁵, Meriem Drissa⁴, Khadija Mzoughi⁶, Dorra Mbarek⁷, Leila Riahi¹, Saoussen Antit⁸, Afef Ben Halima³, Wejdene Ouechtati⁹, Emna Allouche⁹, Mehdi Mechri⁴, Chedi Youssefi², Ali Khorchani¹⁰, Kais Sammoud⁴, Khaled Zaouia¹¹, Rami Tlili⁷, Sana Ouali⁴, Faten Triki², Sonia Hamdi¹², Selim Boudich⁴, Marwa Chebbi⁴, Mouna Hentati⁶, Amani Farah¹³, Habib Triki¹⁴, H. Ghardallou¹⁵, H. Radoui³, Sofien Zayed¹³, F. Azaiez⁴, Fadoua Omri⁵, Akram Zouari², Zine Ben Ali², A. Najjar¹³, Housseem Thabet¹⁵, Mouna Chaker², Samar Mohammed⁸, Abdelhamid Ben Jmaa², Haithem Tangour¹⁵, Yassine Kammoun⁶, Mahmoud Cheikh Bouhlel¹⁵, S. Azeiz¹, R. Gtaief¹, S. Mashki¹, Aymen Amri¹, Hela Naanea¹, Raoudha Othmani¹, Iheb Chahbani¹, Houcine Zargouni¹, Syrine Abid¹, Mokded Ayari¹, Ines Ben Ameer¹, Ali Guesmi¹⁶, Nejeh Ben Halima¹⁷, Habib Haouala¹², Wafa Fehri¹², Essia Boughzela¹⁵, Lilia Zakhama⁸, Soraya Ben Youssef⁸, Wided Nasraoui¹⁸, Rachid Boujneh⁷, Nedja Barakett¹⁴, Sondos Kraiem⁶, Hbib Drissa⁴, Ali Ben Khalfalah⁵, Habib Gamra¹³, Salem Kachboura³, Yosra Majdoub¹⁹, Elifa Kanoun²⁰, Faiez Zannad²¹, Sami Milouchi¹⁰, Alexandre Mebaza²², Samir Kammoun², Sami Mourali⁴, Karima Hezbri²³, Faouzi Addad³

OPEN ACCESS

Citation: Abid L, Charfeddine S, Kammoun I, Ben Halima M, Ben Slima H, Drissa M, et al. (2021) Epidemiology of heart failure and long-term follow-up outcomes in a north-African population: Results from the NATional Tunisian REgistry of Heart Failure (NATURE-HF). PLoS ONE 16(5): e0251658. <https://doi.org/10.1371/journal.pone.0251658>

Editor: Arman Kilic, University of Pittsburgh Medical Center, UNITED STATES

Received: December 4, 2020

Accepted: April 29, 2021

Published: May 20, 2021

Copyright: © 2021 Abid et al. This is an open access article distributed under the terms of the [Creative Commons Attribution License](https://creativecommons.org/licenses/by/4.0/), which permits unrestricted use, distribution, and reproduction in any medium, provided the original author and source are credited.

Data Availability Statement: Data cannot be shared publicly because of privacy concern. Indeed, data might reveal the identity and the location of participants included into the study. Data are available from the Tunisian Society of Cardiology and Cardiovascular Surgery Ethics Committee (contact via Résidence les pergolas, Rue du Lac Huron Appartement 201, Berges du Lac – Tunisie, Email: secretaire.stccc@gmail.com; Tel: (+216) 71 965 432) for researchers who meet the criteria for access to confidential data.

1 Tunisian Society of Cardiology and Cardiac Surgery, Tunis, Tunisia, **2** Department of cardiology, Hedi Chaker Hospital, Sfax, Tunisia, **3** Department of cardiology, Abderrahman Mami Hospital, Ariana, Tunisia, **4** Department of cardiology, La Rabta Hospital, Tunis, Tunisia, **5** Department of cardiology, Menzel Bourguiba Hospital, Bizerte, Tunisia, **6** Department of cardiology, Habib Thameur Hospital, Tunis, Tunisia, **7** Department of cardiology, Mongi Slim Hospital, La Marsa, Tunisia, **8** Department of cardiology, Hospital of the Internal Security Forces, La Marsa, Tunisia, **9** Department of cardiology, Charles Nicolle Hospital, Tunis, Tunisia, **10** Department of cardiology, Habib Bourguiba Hospital, Medenine, Tunisia, **11** Department of cardiology, Habib Bougatfa Hospital, Bizerte, Tunisia, **12** Department of cardiology, Principal Military Hospital, Tunis, Tunisia, **13** Department of cardiology, Fattouma Bourguiba Hospital, Monastir, Tunisia, **14** Department of cardiology, Mohamed Taher Al Maamouri Hospital, Nabeul, Tunisia, **15** Department of cardiology, Sahloul Hospital, Sousse, Tunisia, **16** Department of cardiology, Mohamed Ben Sassi Hospital, Gabes, Tunisia, **17** Department of cardiology, Ibn El Jazzar Hospital, Kairouan, Tunisia, **18** Department of cardiology, Kasserine Hospital, Kasserine, Tunisia, **19** Department of community Medicine, Hedi Chaker Hospital, Sfax, Tunisia, **20** Nuclear Biotechnology and Technology Laboratory - National Center for Nuclear Science and Technology of Sidi Thabet, Ariana, Tunisia, **21** Department of cardiology, Nancy Regional and University Hospital Center, Nancy, France, **22** Department of Cardiology, Lariboisière Hospital, Paris, France, **23** Molecular and Genomic Bacteriology Laboratory, National Institute of Applied Sciences and Technology, Tunis, Tunisia

* leilaabid@yahoo.fr

Abstract

The NATURE-HF registry was aimed to describe clinical epidemiology and 1-year outcomes of outpatients and inpatients with heart failure (HF). This is a prospective, multicenter, observational survey conducted in Tunisian Cardiology centers. A total of 2040 patients

Funding: The authors received no specific funding for this work.

Competing interests: The authors have declared that no competing interests exist.

were included in the study. Of these, 1632 (80%) were outpatients with chronic HF (CHF). The mean hospital stay was 8.7 ± 8.2 days. The mortality rate during the initial hospitalization event for AHF was 7.4%. The all-cause 1-year mortality rate was 22.8% among AHF patients and 10.6% among CHF patients. Among CHF patients, the older age, diabetes, anemia, reduced EF, ischemic etiology, residual congestion and the absence of ACEI/ARBs treatment were independent predictors of 1-year cumulative rates of rehospitalization and mortality. The female sex and the functional status were independent predictors of 1-year all-cause mortality and rehospitalization in AHF patients. This study confirmed that acute HF is still associated with a poor prognosis, while the mid-term outcomes in patients with chronic HF seems to be improved. Some differences across countries may be due to different clinical characteristics and differences in healthcare systems.

Introduction

It is estimated that 26 million people worldwide suffer from heart failure (HF) [1]. The prevalence of HF (HF) is increasing [1]. In the United States and Europe, HF is responsible for a large proportion of morbi-mortality [2–4]. In Tunisia and north-african countries, HF is a public health problem considering its current frequency and this is mainly linked to an aging of the Tunisian population (Africa's oldest population, with the highest life expectancy of the continent) and an increase in coronary and hypertensive patients. However, there is no extensive data available on demographic characteristics, prognosis and quality of care of patients with HF in Tunisia (nor in North Africa). The data of the European and United States populations cannot be extrapolated to the Tunisian population. The aims of the present study were to determine the epidemiological profile of acute and chronic HF patients, to assess the 1-year outcomes (death and rehospitalization) of patients with HF, and to identify prognostic predictors of these outcomes.

Materials and methods

Study design and patient's enrollment

The NATURE- HF registry was a national, Tunisian, observational, longitudinal, prospective and multicentric registry carried out on a follow-up period of 13 months: 01 month of inclusion and 12 months of follow-up. The protocol of the NATURE HF registry has been approved by the Tunisian Society of Cardiology and Cardiovascular Surgery. The NATURE HF study has been submitted to ClinicalTrials.gov and registered under the identifier NCT03262675. An ethical approval letter has been obtained from the ethic committee of the Abderrahmen Mami Pneumology and Phthisiology Hospital. Any selected patient will be introduced in the study and its explicit agreement will be solicited by signing an informed consent form. No data were collected before the patient received detailed information and gave signed informed consent. We included all outpatients with chronic HF (CHF) and those hospitalized for acute HF (AHF) de novo or not. Any violation of the study protocol will be exposed to the Steering Committee which will decide on the exclusion of the patient in question. The selection of patients eligible for inclusion and non-inclusion criteria will be made at the cardiology consultation level or during cardiology or emergencies hospitalizations. A total of 250 Cardiologists (public sector and liberal sector) participate in the inclusion. Patient inclusion will occur consecutively until the end of the inclusion period. The inclusion began on October 02, 2017 for a

duration of 01 months. A Regular follow-up was done up to 12 months after inclusion. Given the observational nature of the NATURE-HF study, no specific treatment or intervention is planned in the management of heart failure. Patients should be cared for according to the usual medical habits.

The diagnosis of heart failure is at the discretion of investigator. The main non-inclusion criteria are the estimated life expectancy <12 months for extra-cardiac pathology, isolated right heart failure, pregnant woman, end-stage or severe renal insufficiency with creatinine clearance <15ml / min, hemodialysis patient, cardiac surgery scheduled within 3 months and congenital heart disease.

The data were collected via the DACIMA Clinical Suite[®] web interface. The platform complies with international standards: FDA 21 CFR part 11 (Food and Drug Administration 21 Code of Federal Regulations part 11), HIPPA (Health Insurance Portability and Accountability Act), ICH (International Conference on Harmonisation), MedDRA (Medical Dictionary for Regulatory Activities) and "Health Canada" and Tunisian regulations.

Statistical analysis. Qualitative variables were expressed as percentages. For quantitative variables, we checked the normality of the distribution by the Kolmogorov-Smirnov test and the Shapiro-Wilk test. An estimate of the means with their standard deviations and of the median with min and max was thus carried out. The baseline characteristics and type of treatments were also reported. The plots of Kaplan–Meier curves for time to all-cause death and time to all-cause death or HF hospitalization were performed. The associations between the variables were studied using hypothesis tests. The comparison between two qualitative variables was carried out by the Pearson “chi²” test when the conditions were verified otherwise the exact Fisher test was used. The Student test was used for the comparison of two means when the distribution is Gaussian and by the non-parametric U test of Mann-Whitney when the distribution is not Gaussian. In addition, these plots were divided into outpatients with CHF and inpatients with AHF. Plots of cumulative incidence of HF hospitalization considering competing risks of death in the two groups were presented.

The factors associated with 1-year death and 1-year death and rehospitalization were studied by calculating unadjusted (in univariate analysis) and adjusted (ORa) Odds Ratio after multivariate analysis using binary logistic regression. We retained a risk of error of 20% to include the indicator variables in the multivariate analysis. Age, systolic blood pressure and ejection fraction (EF) were considered as continuous variables while the remaining were considered as categorical variables. A P-value <0.05 was considered statistically significant.

Results and discussion

A total of 2040 patients were included in the study. Of these, 408 (20%) were inpatients hospitalized with a diagnosis of acute HF (AHF) and 1632 (80%) were outpatients with chronic HF (CHF). The mean hospital stay was 8.7 ± 8.2 days [2; 55].

Baseline characteristics

The baseline characteristics of the study population are reported in «Table 1». A larger percentage of AHF patients had reduced EF, defined as $EF < 40\%$ (53.9% vs. 44.9%). The mean age was 63.56 ± 12.6 years old and 29.1% were female. Around the half of HF patients had an ischemic etiology. Common co-morbidities [atrial fibrillation, diabetes mellitus, anemia, renal dysfunction and chronic obstructive pulmonary disease (COPD)] were more frequent among AHF patients.

Table 1. Baseline characteristics of the study population.

	Total population (n = 2040)	Acute HF (n = 408)	Chronic HF (n = 1632)	p-value
Age (years)				
Mean \pm SD	63.56 \pm 12.6	63.59 \pm 12.9	63.54 \pm 12.5	0.89
Median [IQR]	64 [19–97]	64 [24–91]	64 [19–97]	
\geq 75 years (%)	20.7	24	19.8	0.06
Females (%)	29.1	28.7	29.3	0.85
Diabetes (%)	35.8	41.2	34.5	0.01
Hypertension (%)	40.4	42.2	40	0.42
Smoking (%)	26.2	21.7	27.7	0.11
COPD (%)	6.8	10.5	5.8	0.001
Coronary heart disease (%)	46.2	41.7	47.4	0.03
NYHA III–IV (%)	34.4	65.9	26.5	0.000
SBP (mmHg)				
Mean \pm SD	123.37 \pm 24.8	122.28 \pm 29.0	123.95 \pm 23.8	0.42
Median [IQR]	120 [90–240]	120 [100–240]	120 [90–230]	
\leq 110 mmHg (%)	0.5	0.6	0.5	0.68
Heart rate (bpm)				
Mean \pm SD	80.17 \pm 17.5	88.10 \pm 22.3	78.24 \pm 15.6	0.000
Median [IQR]	77 [30–160]	84 [39–152]	75 [30–161]	
\geq 70 bpm (%)	77.1	85.1	75.2	0.000
ECG abnormalities				
Atrial fibrillation (%)	15.9	21.3	14.5	0.000
LBBB (%)	9	10	8.8	
QRS duration				
$>$ 150 msec (%)	3.8	5.4	3.4	0.002
Ejection fraction (%)				
Mean \pm SD	38.42 \pm 10.5	36.96 \pm 11.4	38.73 \pm 10.2	0.005
Median [IQR]	40 [15–63]	37 [12–65]	40 [14–87]	
$<$ 40%	46.5	53.9	44.9	0.001
40–50%	45.8	36.5	48	
$>$ 50%	7.7	9.7	7.1	
Mitral regurgitation (%)	22.7	24.5	22.3	0.39
Renal dysfunction (%)	38.4	46.5	36.6	0.03
Anemia (%)	7.7	13.5	6.3	0.000

<https://doi.org/10.1371/journal.pone.0251658.t001>

Follow-up

The Fig 1 shows the Kaplan–Meier curves for all-cause mortality in AHF and in CHF patients. At three months, cumulative survival was 98% in CHF and 93% in CHF. At one year, cumulative survival was 90,5% in CHF and 78,4% in AHF. The Fig 2 shows the Kaplan–Meier curves for the combined event of all-cause mortality or hospitalization for HF. In CHF, cumulative events were 2.9% at 3 months and 15.1% at one year. Cumulative events were 7.8% at 3 months and 28.9% at one year in AHF.

The mortality rate during the initial hospitalization event for AHF was 7.4% (30 out of 408). The all-cause 1-year mortality rate was 22.8% among AHF patients and 10.6% among CHF patients «Table 2».

The multivariate analysis showed older age, diabetes, heart rate, QRS duration, anemia, residual congestion and the absence of angiotensin-converting enzyme inhibitors (ACEI)/

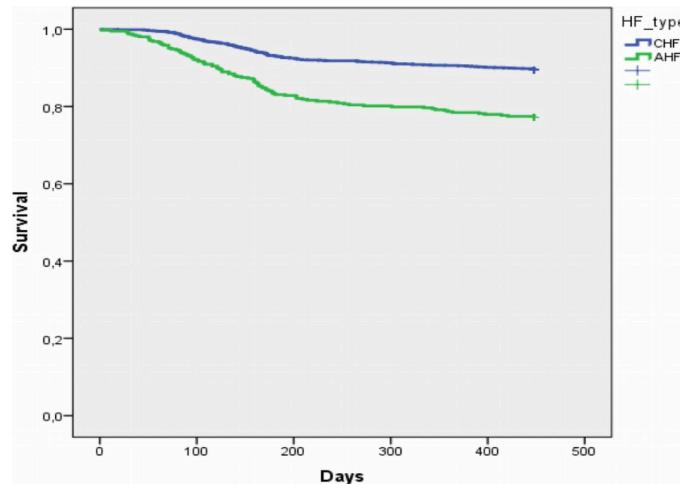


Fig 1. Kaplan–Meier curves for all-cause mortality in acute heart failure and chronic heart failure patients.

<https://doi.org/10.1371/journal.pone.0251658.g001>

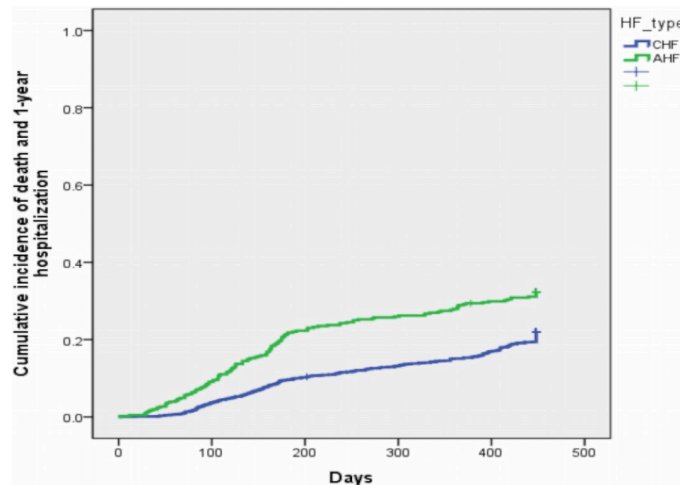


Fig 2. Cumulative incidence plots of death and heart failure (HF) hospitalization in acute heart failure and chronic heart failure patients.

<https://doi.org/10.1371/journal.pone.0251658.g002>

angiotensin receptor antagonists (ARBs) treatment to be independent predictors of 1-year all-cause mortality in CHF patients «Table 3».

The female sex, New York Heart Association (NYHA) class III or IV and the absence of ACEI/ARBs treatment were independent predictors of 1-year all-cause mortality in AHF patients «Table 4».

Table 2. Causes of death and rehospitalization of all study patients.

	Total population (n = 2040)	Acute HF (n = 408)	Chronic HF (n = 1632)	p-value
All-cause Mortality (%)	13	22.8	10.6	0.000
In-Hospital mortality (%)	3.3	7.4	1.9	0.000
12-months mortality and rehospitalization (%)	18.7	26.5	16.8	0.000
12-months rehospitalization (%)	7.3	5.9	7.7	0.21

<https://doi.org/10.1371/journal.pone.0251658.t002>

Table 3. Predictors of all-cause of 1- year mortality in CHF patients (multivariable analysis).

	HR (95% CI)	p-value
Age \geq 75 years (yes vs no)	1.894 (1.256–2.856)	0.002
Diabetes (yes vs no)	1.520 (1.047–2.206)	0.028
Heart rate \geq 70 bpm (yes vs no)	1.731 (1.046–2.867)	0.033
QRS duration $>$ 150 msec (yes vs no)	2.641 (1.279–5.455)	0.009
Anemia (yes vs no)	1.887 (1.081–3.293)	0.025
ACEI/ ARBs treatment (yes vs no)	0.466 (0.309–0.703)	0.000
Loop diuretics optimization (yes vs no)	0.595 (0.405–0.874)	0.008

<https://doi.org/10.1371/journal.pone.0251658.t003>

Table 4. Predictors of all-cause of 1- year mortality in AHF patients (multivariable analysis).

	HR (95% CI)	p-value
Female sex (yes vs no)	2.004 (1.129–3.555)	0.017
NYHA III–IV (yes vs no)	2.525 (1.316–4.867)	0.005
ACEI/ ARBs treatment (yes vs no)	0.449 (0.252–0.798)	0.006

<https://doi.org/10.1371/journal.pone.0251658.t004>

Table 5. Predictors of all-cause of 1-year rehospitalization and mortality in CHF patients (multivariable analysis).

	HR (95% CI)	p-value
Age \geq 75 years (yes vs no)	1.995 (1.452–2.741)	0.000
Diabetes (yes vs no)	1.645 (1.242–2.178)	0.001
Anemia (yes vs no)	1.749 (1.109–2.759)	0.016
LV EF $<$ 40% (yes vs no)	1.327 (1.006–1.750)	0.045
Ischemic etiology (yes vs no)	1.348 (1.010–1.798)	0.042
ACE/ ARBs treatment (yes vs no)	0.553 (0.399–0.767)	0.000
Loop diuretics optimization (yes vs no)	0.490 (0.369–0.650)	0.000

<https://doi.org/10.1371/journal.pone.0251658.t005>

Among CHF patients, the older age, diabetes, anemia, reduced EF, ischemic etiology, residual congestion and the absence of ACEI/ ARBs treatment were independent predictors of 1-year cumulative rates of rehospitalization and mortality «Table 5».

The female sex and the New York Heart Association (NYHA) class III or IV were independent predictors of 1-year all-cause mortality and rehospitalization in AHF patients «Table 6».

Medications of HF-patients

During the out-patient visit, both ACEI/ ARBs and beta-blockers were the most prescribed medications (67.8% and 65.1% respectively). The medication prescribed for CHF patients at baseline and 1-year follow-up are presented in «Table 7». The percentage of ACEI/ARBs, beta-blockers and mineralocorticoid receptor antagonists (MRAs) increased slightly from 68.9% to

Table 6. Predictors of all-cause of 1- year mortality and rehospitalization in AHF patients (multivariable analysis).

	HR (95% CI)	p-value
Female sex (yes vs no)	1.996 (1.188–3.355)	0.009
NYHA III–IV (yes vs no)	2.629 (1.514–4.565)	0.001

<https://doi.org/10.1371/journal.pone.0251658.t006>

Table 7. Pharmacological treatment of CHF patients during outpatient visit and at 1-year.

	Out-patient visit	At 1-year	P
ACEI/ ARBs (%)	68.9	73.2	0.000
Beta-blockers (%)	67	71.9	0.000
Aldosterone blockers (%)	28.8	31.3	0.000
Loop diuretics (%)	52.2	23	0.000
Ivabradine (%)	0.4	0.6	0.5
Sacubitril-valsartan (%)	0.2	0.2	1
Digitalis (%)	4.8	5.5	0.001

<https://doi.org/10.1371/journal.pone.0251658.t007>

73.2%, 67% to 71.9% and 28.8% to 31.3% respectively. Diuretics prescription fell from 52.2% to 23.0%. Prescription of ivabradine and sacubitril-valsartan remained stable during the follow-up.

Table 8 summarizes the medications prescribed for AHF patients at discharge and at 1-year follow-up. Prescription of ACEI/ARBs, beta-blockers, MRAs rose significantly from 62.0% to 72.9%, 57.4% to 68.2% and 31.9% to 39.7% respectively. However, the use of diuretics fell from 65.9% to 26.9%. There were no statistically significant differences between baseline and 1-year follow-up prescription of ivabradine, digitalis and sacubitril-valsartan.

The use of implantable cardioverter defibrillators (ICDs), cardiac resynchronization therapy with defibrillation (CRT-D) and CRT-pacemaker (CRT-P) were used by 2.5%, 0.8% and 3.1%.

At 1-year follow-up, only 22.7% had optimal treatment. The ACEI/ARBs optimal doses were reached in 30.4% and those of beta-blockers in 40%.

The Nature-HF registry analyzed HF patients who were treated at the same hospitals by the same physicians and who had been followed up for 1 year. Of these patients, 408 (20%) were hospitalized with a diagnosis of AHF and 1632 (80%) were outpatients with CHF.

The main findings of this study are: (i) the all-cause 1-year mortality rates were 13% for all HF patients, 22.8% for AHF and 10.6% for CHF; (ii) the 1-year rates of hospitalization because of HF were 7.3% for all HF patients, 5.9% for AHF and 7.7% for CHF; (iii) the 1-year incidence rates of the combined event 'all-cause mortality or HF hospitalization' were 18.7% for all HF patients, 26.5% for AHF and 16.8% for CHF. Except the younger population age, the clinical characteristics were similar to those of previous studies [5, 6]. The incidence of the combined event of death or HF rehospitalization are lower in the present study, with 18.7% compared with 35.8% in the Pilot Survey [5] and 40.1% in the ESC-HF long term registry [7].

In this study, the rates of mortality and rehospitalization of CHF patients were significantly lower than that of AHF patients. This is may be due to more comorbidities especially diabetes

Table 8. Pharmacological treatment of AHF patients during discharge and at 1-year.

	Out-patient visit	At 1-year	p
ACEI/ ARBs (%)	62	72.9	0.000
Beta-blockers (%)	57.4	68.2	0.000
Aldosterone blockers (%)	31.9	39.7	0.000
Loop diuretics (%)	65.9	26.9	0.000
Ivabradine (%)	1.2	1.3	1
Sacubitril-valsartan (%)	0	0	1
Digitalis (%)	5.1	6.3	0.25

<https://doi.org/10.1371/journal.pone.0251658.t008>

(41.2% vs 34.5%, $p = 0.01$) and COPD (10.5% vs 5.8%, $p = 0.001$), atrial fibrillation (21.3% vs 14.5%, $p = 0.000$) and systolic LV dysfunction (53.9% vs 44.9%, $p = 0.001$) in AHF patients.

Among CHF patients, the rates of 1-year all-cause mortality and hospitalization were 10.6% and 7.7%. There is reduction in these rates compared with those of the north African population in the ESC-HF long term registry, in which rates were 15.6% and 10.1% respectively [7].

All-cause mortality among AHF patients is high, with a rate of in hospital death of 7.4% and 22.8% within 1 year. These rates are higher than in the ESC-HF Pilot Survey [5], in which the 1-year all-cause mortality rates were 17.4%, nearly equal to those of the ESC-HF long term registry [7], in which 1-year all-cause mortality rates were 23.6% and fewer than those of the north African population of the ESC-HF long term registry [7], in which rates were 29.1%.

The predictors of all-cause mortality among CHF patients in this study were similar to those found in previous studies: older age, accelerated heart rate, QRS duration, diabetes, anemia, congestion and failure to optimize treatment [7–11]. The predictors of all-cause mortality among AHF patients in this study were consistent with those observed in previous studies, in which mainly pulmonary congestion was predictive of an adverse outcome [12–14]. However, the female sex was also an independent predictor of worse prognosis in AHF. It seems to be a main particularity of HF north-African population. In fact, in the GREAT registry, women with AHF have a lower 1-year mortality unless less evidenced-based treatment than men [15]. In the Swede HF registry, after adjustments for mortality and morbidity, females had a better prognosis across the EF spectrum [6]. This finding may be explained by a delayed diagnosis or by the excess social stressors and less HF guideline-recommended treatments in females in our population. So that, we must improve management of AHF in women in Tunisia and north-African countries.

These results reinforce the recommendations that all HF patients should not be discharged until the signs of congestion have completely disappeared applying recommended treatment protocols [16]. The congestion must be treated in CHF patients as well in AHF ones and the HF guideline-recommended treatments must be initiated before discharge. The lower death and cumulative rehospitalization rates among both AHF and CHF patients may be attributable in part to the younger age and the improvement in the management of HF patients after current HF guidelines consisting with more frequent prescription of beta-blockers and ACEI/ARBs [2, 4]. However, the prescription of ivabradine and sacubitril-valsartan was still limited. This is due to probably to the cost and the absence of the reimbursement of ivabradine and the unavailability and the absence of local authorization of sacubitril-valsartan in Tunisia during the study period. In addition, the use of implantable devices (ICDs and CRTs) was still infrequent. As an example, the ICDs implantation ranges from 2.5% in our patients to 21.3% in Western Europe [7]. This is also possibly due to multifactorial causes involving essentially cost, and reimbursement systems in our country [17]. The treatment optimization is still also limited. At 1-year follow-up, only 22.7% had optimal treatment. The ACEI/ARBs optimal doses were reached in 30.4% and those of beta-blockers in 40%. These rates were comparable to those of previous registries [18, 19].

Finally, it seems important to integrate HF disease management programs, especially those with nursing staff involvement in order to ameliorate the HF prognosis and reduce rate of hospitalization for HF [20–23].

Study limitations

This study has some important limitations. First of all, although the criteria for HF are well established in the guidelines [2, 4], patients included in the NATURE-HF registry are diagnosed by local physicians and are not validated centrally. Second, the patients included are

only enrolled among those admitted to the cardiology department or seen in outpatient cardiology consultations. The HF patients seen in other departments, such as the emergency unit, were therefore not taken into account.

Conclusions

In comparison with the results of previous studies, the results of the present study, show that 1-year mortality is reduced but is still important among HF patients. The reduction is particularly seen in CHF patients. This is possibly due to increasing prescription of HF guideline-recommended treatment. However, full adherence to current guidelines is not totally achieved, due to in part to logistical and cost issues. Among AHF patients, females had also worse prognosis. This finding deserves attention considering differences with previous studies. The NAT-URE-HF registry provides important data to improve the management and outcomes of HF patients in north-African countries.

Supporting information

S1 File. TREND statement checklist.

(PDF)

S1 Table. Baseline characteristics of patients with chronic heart failure (N = 1632) according to left ventricle ejection fraction EF: Ejection fraction; * Kruskal-Wallis test.

(PDF)

S2 Table. Baseline characteristics of patients with acute heart failure (N = 408) according to EF: Ejection fraction; * Kruskal-Wallis test EF: Ejection fraction; * Kruskal-Wallis test.

(PDF)

S3 Table. Medications of the chronic heart failure during out-patients visit according to the left ventricle ejection fraction EF: Ejection fraction.

(PDF)

S4 Table. Medications of the acute heart failure at discharge according to the left ventricle ejection fraction EF: Ejection fraction.

(PDF)

Author Contributions

Conceptualization: Leila Abid.

Data curation: Leila Abid.

Formal analysis: Yosra Majdoub.

Funding acquisition: Leila Abid.

Investigation: Leila Abid, Salma Charfeddine, Ikram Kammoun, Manel Ben Halima, Hedi Ben Slima, Meriem Drissa, Khadija Mzoughi, Dorra Mbarek, Leila Riahi, Saoussen Antit, Afef Ben Halima, Wejdene Ouechtati, Emna Allouche, Mehdi Mechri, Chedi Youssfi, Ali Khorchani, Kais Sammoud, Khaled Zaouia, Rami Tlili, Sana Ouali, Faten Triki, Sonia Hamdi, Selim Boudich, Marwa Chebbi, Mouna Hentati, Amani Farah, Habib Triki, H. Ghardallou, H. Radoui, Sofien Zayed, F. Azaiez, Fadoua Omri, Akram Zouari, Zine Ben Ali, A. Najjar, Housseem Thabet, Mouna Chaker, Samar Mohammed, Abdelhamid Ben Jmaa, Haithem Tangour, Yassine Kammoun, Mahmoud Cheikh Bouhleb, S. Azeiz, R. Gtaief, S. Mashki, Aymen Amri, Hela Naanea, Raoudha Othmani, Iheb Chahbani, Houcine

Zargouni, Syrine Abid, Mokded Ayari, Ines Ben Ameur, Ali Guesmi, Nejeh Ben Halima, Habib Haouala, Wafa Fehri, Essia Boughzela, Lilia Zakhama, Soraya Ben Youssef, Wided Nasraoui, Rachid Boujneh, Nedja Barakett, Sondos Kraiem, Hbib Drissa, Ali Ben Khalifah, Habib Gamra, Salem Kachboursa, Elifa Kanoun, Faiez Zannad, Sami Milouchi, Alexandre Mebaza, Samir Kammoun, Sami Mourali, Karima Hezbri, Faouzi Addad.

Methodology: Leila Abid.

Project administration: Leila Abid.

Supervision: Leila Abid.

Validation: Leila Abid.

Visualization: Leila Abid.

Writing – original draft: Leila Abid, Salma Charfeddine.

Writing – review & editing: Leila Abid, Salma Charfeddine.

References

1. Ponikowski P, Anker SD, AlHabib KF, Cowie MR, Force TL, Hu S, et al. Heart failure: preventing disease and death worldwide. *ESC Heart Fail.* sept 2014; 1(1):4–25. <https://doi.org/10.1002/ehf2.12005> PMID: 28834669
2. Ponikowski P, Voors AA, Anker SD, Bueno H, Cleland JGF, Coats AJS, et al. 2016 ESC Guidelines for the diagnosis and treatment of acute and chronic heart failure: The Task Force for the diagnosis and treatment of acute and chronic heart failure of the European Society of Cardiology (ESC) Developed with the special contribution of the Heart Failure Association (HFA) of the ESC. *Eur Heart J.* 14 2016; 37(27):2129–200. <https://doi.org/10.1093/eurheartj/ehw128> PMID: 27206819
3. Ambrosy AP, Fonarow GC, Butler J, Chioncel O, Greene SJ, Vaduganathan M, et al. The global health and economic burden of hospitalizations for heart failure: lessons learned from hospitalized heart failure registries. *J Am Coll Cardiol.* 1 avr 2014; 63(12):1123–33. <https://doi.org/10.1016/j.jacc.2013.11.053> PMID: 24491689
4. Yancy CW, Jessup M, Bozkurt B, Butler J, Casey DE, Colvin MM, et al. 2017 ACC/AHA/HFSA Focused Update of the 2013 ACCF/AHA Guideline for the Management of Heart Failure: A Report of the American College of Cardiology/American Heart Association Task Force on Clinical Practice Guidelines and the Heart Failure Society of America. *J Am Coll Cardiol.* 08 2017; 70(6):776–803. <https://doi.org/10.1016/j.jacc.2017.04.025> PMID: 28461007
5. Maggioni AP, Dahlström U, Filippatos G, Chioncel O, Crespo Leiro M, Drozd J, et al. EURObservational Research Programme: regional differences and 1-year follow-up results of the Heart Failure Pilot Survey (ESC-HF Pilot). *Eur J Heart Fail.* juill 2013; 15(7):808–17. <https://doi.org/10.1093/eurjhf/hft050> PMID: 23537547
6. Stolfo D, Uijl A, Vedin O, Strömberg A, Faxén UL, Rosano GMC, et al. Sex-Based Differences in Heart Failure Across the Ejection Fraction Spectrum: Phenotyping, and Prognostic and Therapeutic Implications. *JACC Heart Fail.* 2019; 7(6):505–15. <https://doi.org/10.1016/j.jchf.2019.03.011> PMID: 31146874
7. Crespo-Leiro MG, Anker SD, Maggioni AP, Coats AJ, Filippatos G, Ruschitzka F, et al. European Society of Cardiology Heart Failure Long-Term Registry (ESC-HF-LT): 1-year follow-up outcomes and differences across regions. *Eur J Heart Fail.* 2016; 18(6):613–25. <https://doi.org/10.1002/ejhf.566> PMID: 27324686
8. Voors AA, Ouwerkerk W, Zannad F, van Veldhuisen DJ, Samani NJ, Ponikowski P, et al. Development and validation of multivariable models to predict mortality and hospitalization in patients with heart failure. *Eur J Heart Fail.* 2017; 19(5):627–34. <https://doi.org/10.1002/ejhf.785> PMID: 28247565
9. Balsam P, Tymińska A, Kapłon-Cieślicka A, Ozierański K, Peller M, Galas M, et al. Predictors of one-year outcome in patients hospitalised for heart failure: results from the Polish part of the Heart Failure Pilot Survey of the European Society of Cardiology. *Kardiol Pol.* 2016; 74(1):9–17. <https://doi.org/10.5603/KP.a2015.0112> PMID: 26101021
10. Lehrke M, Marx N. Diabetes Mellitus and Heart Failure. *Am J Med.* juin 2017; 130(6S):S40–50. <https://doi.org/10.1016/j.amjmed.2017.04.010> PMID: 28526183
11. Dunlay SM, Givertz MM, Aguilar D, Allen LA, Chan M, Desai AS, et al. Type 2 Diabetes Mellitus and Heart Failure: A Scientific Statement From the American Heart Association and the Heart Failure

- Society of America: This statement does not represent an update of the 2017 ACC/AHA/HFSA heart failure guideline update. *Circulation*. 13 2019; 140(7):e294–324. <https://doi.org/10.1161/CIR.0000000000000691> PMID: 31167558
12. Oliva F, Mortara A, Cacciatore G, Chinaglia A, Di Lenarda A, Gorini M, et al. Acute heart failure patient profiles, management and in-hospital outcome: results of the Italian Registry on Heart Failure Outcome. *Eur J Heart Fail*. nov 2012; 14(11):1208–17. <https://doi.org/10.1093/eurjhf/hfs117> PMID: 22833614
 13. Ambrosy AP, Pang PS, Khan S, Konstam MA, Fonarow GC, Traver B, et al. Clinical course and predictive value of worsening during hospitalization in patients admitted for worsening signs and symptoms of heart failure with reduced ejection fraction: findings from the EVEREST trial. *Eur Heart J*. mars 2013; 34(11):835–43. <https://doi.org/10.1093/eurheartj/ehs444> PMID: 23293303
 14. Rubio-Gracia J, Demissei BG, Ter Maaten JM, Cleland JG, O'Connor CM, Metra M, et al. Prevalence, predictors and clinical outcome of residual congestion in acute decompensated heart failure. *Int J Cardiol*. 01 2018; 258:185–91. <https://doi.org/10.1016/j.ijcard.2018.01.067> PMID: 29544928
 15. Motiejūnaitė J, Akiyama E, Cohen-Solal A, Maggioni AP, Mueller C, Choi D-J, et al. The association of long-term outcome and biological sex in patients with acute heart failure from different geographic regions. *Eur Heart J*. 1 avr 2020; 41(13):1357–64. <https://doi.org/10.1093/eurheartj/ehaa071> PMID: 32125360
 16. Mullens W, Damman K, Harjola V-P, Mebazaa A, Brunner-La Rocca H-P, Martens P, et al. The use of diuretics in heart failure with congestion—a position statement from the Heart Failure Association of the European Society of Cardiology. *Eur J Heart Fail*. 2019; 21(2):137–55. <https://doi.org/10.1002/ejhf.1369> PMID: 30600580
 17. Callender T, Woodward M, Roth G, Farzadfar F, Lemarie J-C, Gicquel S, et al. Heart failure care in low- and middle-income countries: a systematic review and meta-analysis. *PLoS Med*. août 2014; 11(8): e1001699. <https://doi.org/10.1371/journal.pmed.1001699> PMID: 25117081
 18. Maggioni AP, Anker SD, Dahlström U, Filippatos G, Ponikowski P, Zannad F, et al. Are hospitalized or ambulatory patients with heart failure treated in accordance with European Society of Cardiology guidelines? Evidence from 12,440 patients of the ESC Heart Failure Long-Term Registry. *Eur J Heart Fail*. oct 2013; 15(10):1173–84. <https://doi.org/10.1093/eurjhf/hft134> PMID: 23978433
 19. Greene SJ, Butler J, Albert NM, DeVore AD, Sharma PP, Duffy CI, et al. Medical Therapy for Heart Failure With Reduced Ejection Fraction: The CHAMP-HF Registry. *J Am Coll Cardiol*. 24 2018; 72(4):351–66. <https://doi.org/10.1016/j.jacc.2018.04.070> PMID: 30025570
 20. Strömberg A, Mårtensson J, Fridlund B, Levin L-A, Karlsson J-E, Dahlström U. Nurse-led heart failure clinics improve survival and self-care behaviour in patients with heart failure: results from a prospective, randomised trial. *Eur Heart J*. juin 2003; 24(11):1014–23. [https://doi.org/10.1016/s0195-668x\(03\)00112-x](https://doi.org/10.1016/s0195-668x(03)00112-x) PMID: 12788301
 21. McDonagh TA, Blue L, Clark AL, Dahlström U, Ekman I, Lainscak M, et al. European Society of Cardiology Heart Failure Association Standards for delivering heart failure care. *Eur J Heart Fail*. mars 2011; 13(3):235–41.
 22. Eapen ZJ, Reed SD, Li Y, Kociol RD, Armstrong PW, Starling RC, et al. Do countries or hospitals with longer hospital stays for acute heart failure have lower readmission rates?: Findings from ASCEND-HF. *Circ Heart Fail*. juill 2013; 6(4):727–32. <https://doi.org/10.1161/CIRCHEARTFAILURE.112.000265> PMID: 23770519
 23. Nessler J, Kozierekiewicz A, Gackowski A, Ponikowski P, Straburzynska-Migaj E, Uchmanowicz I, et al. [Coordinated heart failure care in Poland: towards optimal organisation of the health care system]. *Kardiol Pol*. 2018; 76(2):479–87. <https://doi.org/10.5603/KP.2018.0050> PMID: 29457624