

Supplement Figure I

Study flow

Flow diagram of included patients according to baseline systolic blood pressure (SBP) and treatment allocation.

Supplement Figure II

Primary outcome by baseline systolic blood pressure (SBP)

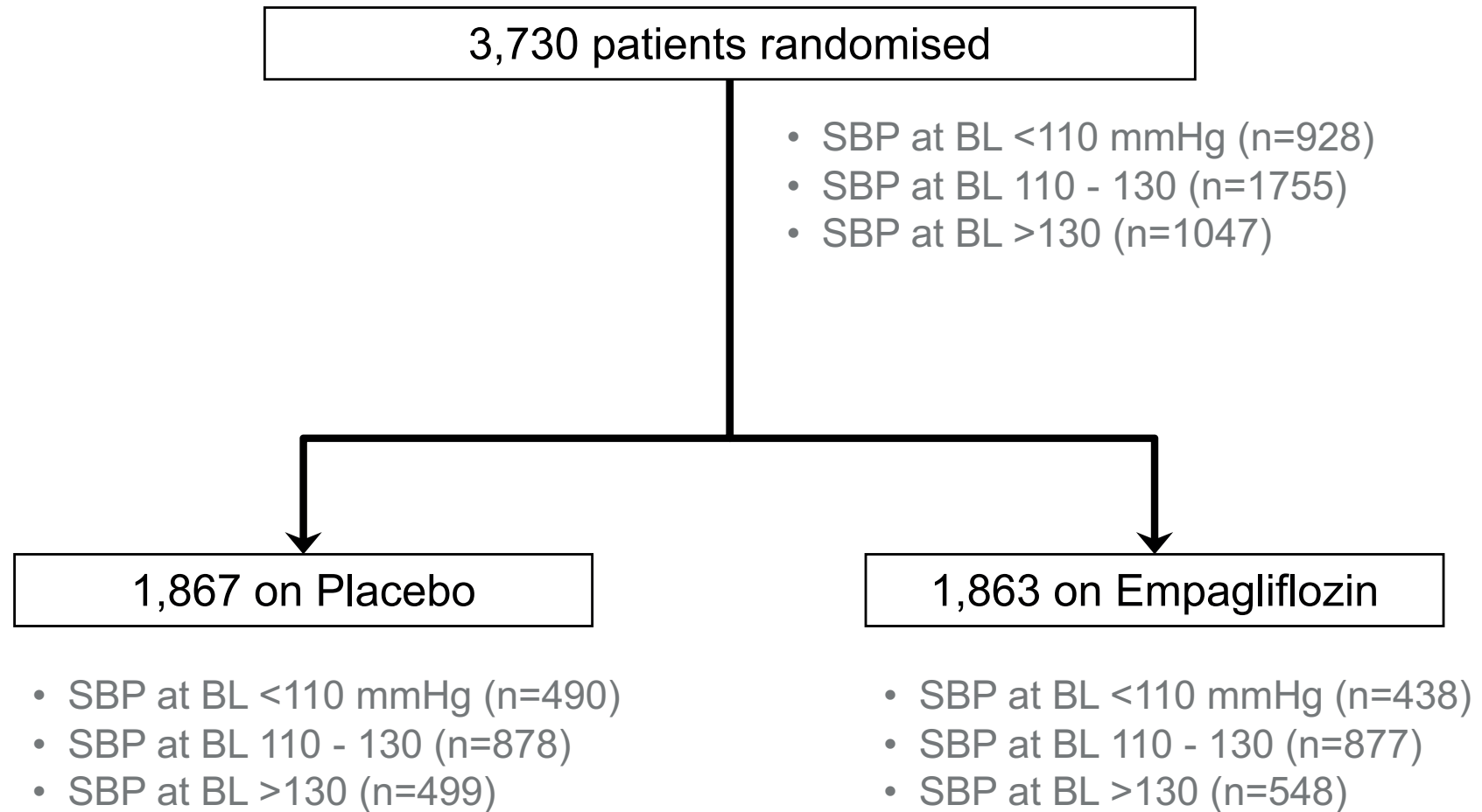
Cumulative incidence function for the effect of empagliflozin (blue) and placebo (red) on the primary endpoint (composite of first heart failure hospitalization or cardiovascular death) at baseline systolic blood pressure (SBP) <110 mmHg (A), 110-130 mmHg (B) and >130 mmHg (C).

Supplement Figure III

SBP adjusted treatment effects

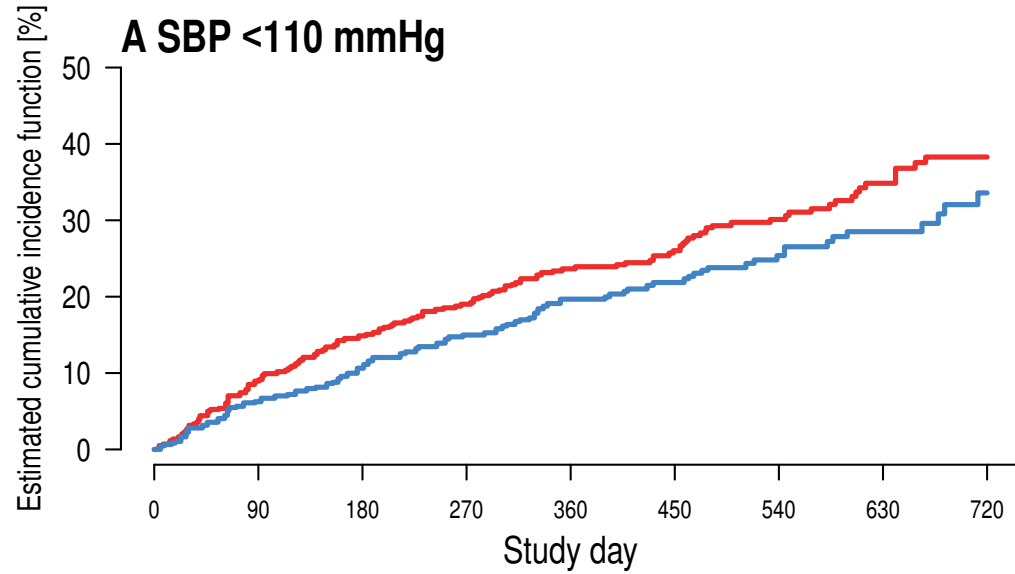
Treatment effect of empagliflozin adjusted for baseline and time-updated systolic blood pressure (SBP).

Suppl. figure I: Study flow



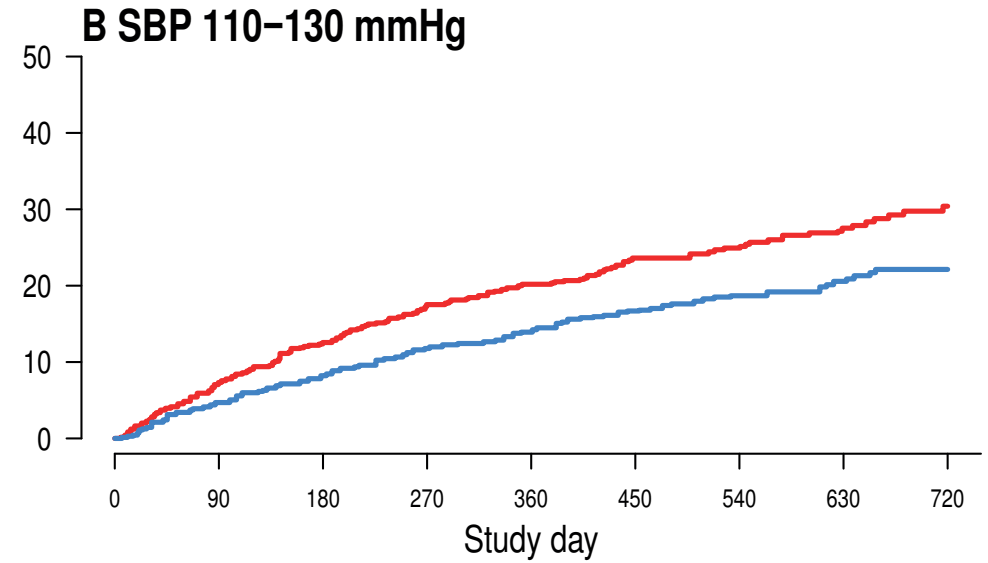
SBP at BL: Systolic blood pressure at baseline

Suppl. figure II: Cumulative incidence function for primary outcome by baseline systolic blood pressure (SBP)

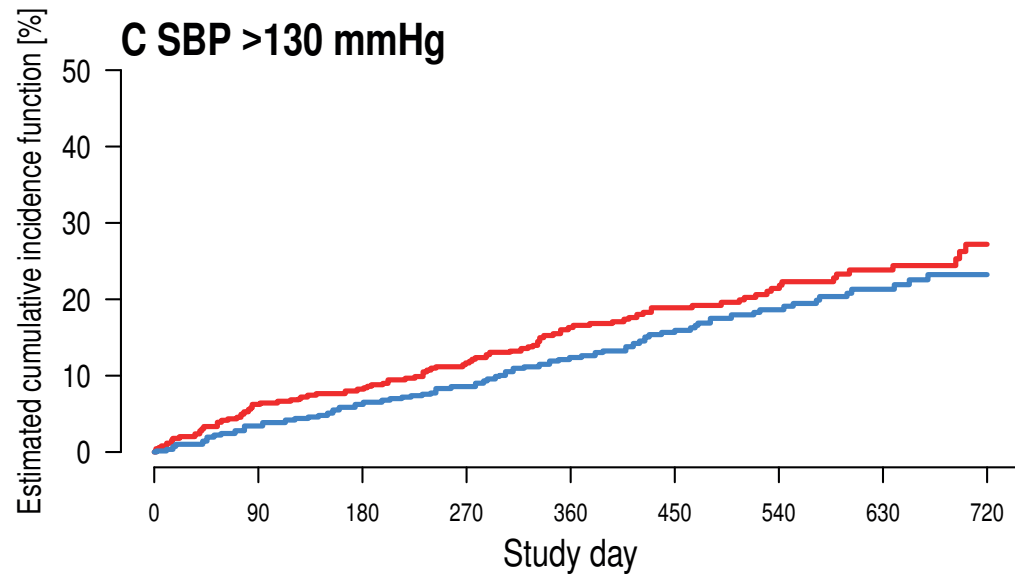


Numbers at risk

Placebo	490	439	407	345	284	220	149	96	66
Empagliflozin	438	410	386	321	251	198	127	85	42



Placebo	878	808	753	615	512	384	279	193	93
Empagliflozin	877	827	787	673	565	439	319	207	115



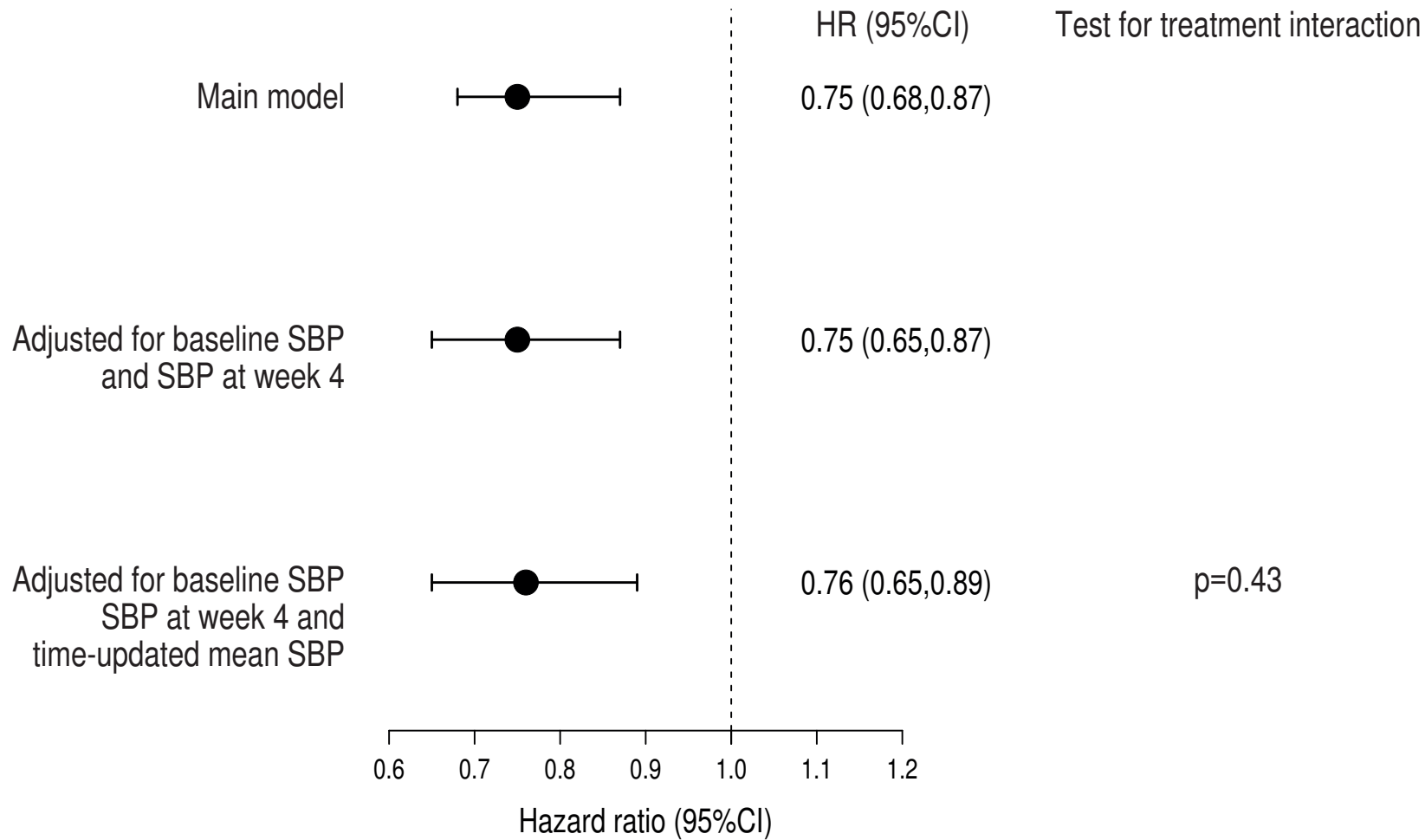
Numbers at risk

Placebo	499	468	452	385	312	250	183	121	65
Empagliflozin	548	526	504	430	356	272	199	131	74

— Empagliflozin
— Placebo

p for interaction trend test = 0.83

Suppl. figure III: SBP adjusted treatment effects



Main model is adjusted for age (cont.), baseline eGFR (CKD-EPI) (cont.), region, baseline diabetes status, sex, baseline LVEF (cat.) and treatment.

2nd model additionally adjusts for baseline SBP (<110, 110-130, >130), SBP at week 4 (<110, 110-130, >130).

3rd model additionally adjusts for time update mean SBP.

This is a landmark analysis considering only events after week 4