



**HAL**  
open science

# Blood and Urine Biomarkers Predicting Worsening Kidney Function in Patients with Type 2 Diabetes Post-Acute Coronary Syndrome: An Analysis from the EXAMINE Trial

João Pedro Ferreira, Patrick Rossignol, George Bakris, Cyrus Mehta, William B White, Faiez Zannad

## ► To cite this version:

João Pedro Ferreira, Patrick Rossignol, George Bakris, Cyrus Mehta, William B White, et al.. Blood and Urine Biomarkers Predicting Worsening Kidney Function in Patients with Type 2 Diabetes Post-Acute Coronary Syndrome: An Analysis from the EXAMINE Trial. *American Journal of Nephrology*, 2022, 52 (12), pp.969-976. 10.1159/000519436 . hal-03529807

**HAL Id: hal-03529807**

**<https://hal.univ-lorraine.fr/hal-03529807>**

Submitted on 17 Jan 2022

**HAL** is a multi-disciplinary open access archive for the deposit and dissemination of scientific research documents, whether they are published or not. The documents may come from teaching and research institutions in France or abroad, or from public or private research centers.

L'archive ouverte pluridisciplinaire **HAL**, est destinée au dépôt et à la diffusion de documents scientifiques de niveau recherche, publiés ou non, émanant des établissements d'enseignement et de recherche français ou étrangers, des laboratoires publics ou privés.

**Blood and urine biomarkers predicting worsening kidney function in patients with type 2 diabetes post-acute coronary syndrome: an analysis from the EXAMINE trial**

João Pedro Ferreira, MD, PhD<sup>1,2</sup>; Patrick Rossignol, MD, PhD<sup>1</sup>; George Bakris, MD<sup>3</sup>; Cyrus Mehta, PhD<sup>4</sup>; William B. White, MD<sup>5</sup>; Faiez Zannad, MD, PhD<sup>1</sup>

<sup>1</sup> Centre D'Investigation Clinique-Plurithématique Inserm CIC-P 1433, Inserm U1116, CHRU Nancy hopitaux de Brabois, F-CRIN INI-CRCT (Cardiovascular and Renal Clinical Trialists), Université de Lorraine, Institut Lorrain du Coeur et des Vaisseaux Louis Mathieu, 4 Rue du Morvan, 54500, Vandoeuvre lès Nancy, France.

<sup>2</sup> Cardiovascular Research and Development Center, Department of Surgery and Physiology, Faculty of Medicine of the University of Porto, Porto, Portugal.

<sup>3</sup> Department of Medicine, American Heart Association Comprehensive Hypertension Center, University of Chicago, Chicago, IL, USA.

<sup>4</sup> Cytel Corporation, Cambridge, MA, USA.

<sup>5</sup> Calhoun Cardiology Center, University of Connecticut School of Medicine, Farmington, CT, USA.

Contact to:

Dr João Pedro Ferreira

Centre d'Investigation Clinique 1433 module Plurithématique

CHRU Nancy - Hopitaux de Brabois

Institut Lorrain du Coeur et des Vaisseaux Louis Mathieu

4 rue du Morvan

54500 Vandoeuvre les Nancy

Tel : +33 (0) 3 83 15 73 15

Fax : +33 (0) 3 83 15 73 24

Mail: [j.ferreira@chru-nancy.fr](mailto:j.ferreira@chru-nancy.fr) / [jp7ferreira@hotmail.com](mailto:jp7ferreira@hotmail.com)

## **Abstract**

*Introduction:* Worsening kidney function (WKF) is frequent among patients with type 2 diabetes (T2D) and a recent acute coronary syndrome (ACS) and is associated with a poor prognosis. An accurate prediction of WKF is clinically important.

*Aims:* Using data from the EXAMINE trial including patients with T2D and a recent ACS, and a large biomarker panel incorporating proteins measured both in blood and urine, we aim to determine those with best performance for WKF prediction.

*Methods:* WKF was defined as a  $\geq 40\%$  eGFR drop from baseline, eGFR $<15$ ml/min, or dialysis. Mixed effects and time-updated Cox models were used.

*Results:* 5131 patients were included from whom 222 (4.3%) developed at least one WKF episode over a median follow-up of 18 months. Patients who developed WKF were more frequently women, had longer diabetes duration, a more frequent HF history, higher anemia prevalence, and impaired kidney function. In multivariable models including all variables (clinical and biomarkers) independently associated with WKF with a  $P$ -value $\leq 0.0001$ , blood KIM-1 was (by far) the variable with strongest WKF association, followed by anemia. KIM-1 alone provided good discrimination for WKF prediction (AUC=0.73). Patients in the high KIM-1-derived risk tertile had a 6.7-fold higher risk of any WKF than patients classified as low risk. In time-updated Cox models, the occurrence of WKF was independently associated with a higher risk of death: adjusted HR=4.93 (3.06-7.96),  $P$ -value $<0.0001$ .

*Conclusion:* Blood KIM-1 was the biomarker the strongest association with WKF. The occurrence of WKF was independently associated with a higher risk of subsequent cardiovascular events and mortality.

*Key-words:* kidney injury molecule 1, worsening kidney function, type 2 diabetes, acute coronary syndromes, prognosis.

## **Introduction**

Worsening kidney function (WKF) is frequent among patients with type 2 diabetes (T2D) and is associated with a poor prognosis.<sup>1</sup> The risk of WKF is particularly elevated in patients with T2D with a very high cardiovascular risk, such as those with a recent acute coronary syndrome (ACS) or myocardial infarction (MI).<sup>2, 3</sup>

Blood and urine biomarkers reflecting kidney damage have been shown to predict WKF and cardiovascular events in patients with and without T2D.<sup>4-8</sup> However, the identified biomarkers vary largely between studies, which poses difficulties in selecting biomarkers for clinical implementation.<sup>9</sup>

The use of large biomarker panels incorporating both urinary and blood biomarkers may help in selecting the biomarkers with the best performance in predicting WKF. An accurate identification of patients at higher risk for WKF is important to select those who might experience a greater benefit from therapies that reduce kidney events and improve cardiovascular outcomes in patients with T2D.<sup>10-13</sup>

Using data from the Cardiovascular Outcomes Study of Alogliptin in Patients with Type 2 Diabetes and Acute Coronary Syndrome (EXAMINE) trial,<sup>14</sup> and a large biomarker panel incorporating proteins measured both in blood and urine, we aim to determine those with best performance for prediction WKF.

## **Methods**

### **Study design**

Details of the EXAMINE trial design have been previously published<sup>14, 15</sup>. In short, a total of 5380 patients with T2D who had a recent ACS were randomly assigned to either alogliptin or placebo.

In the overall population, alogliptin significantly reduced glycosylated hemoglobin (HBA1c) without increasing the rates of major adverse cardiovascular events over a median follow-up of 18 months.

The steering committee, consisting of academic members and three nonvoting representatives of the sponsor (Takeda Development Center Americas), designed and oversaw the conduct of the trial. An independent data and safety monitoring committee monitored the trial and had access to the unblinded data.

For the present analysis we included 5131 patients (95.4% of the overall population) who had biomarkers available.

### **Study patients**

Patients were eligible for enrolment if they had received a diagnosis of T2D, were receiving antidiabetic therapy (other than a DPP-4 inhibitor or GLP-1 analogue) and had an ACS (MI and unstable angina requiring hospitalization) within 15 to 90 days prior to randomization. Major exclusion criteria were a diagnosis of type 1 diabetes, unstable cardiac disorders (e.g., advanced heart failure, refractory angina, uncontrolled arrhythmias, critical valvular heart disease, or severe uncontrolled hypertension), and dialysis within 14 days before screening.

Institutional Review Board approval was obtained, and all patients provided informed consent to participate in the trial. The EXAMINE trial is registered with the clinicaltrials.gov number NCT00968708.

### **End points**

The primary endpoint in EXAMINE was a composite of death from cardiovascular causes, nonfatal MI, or nonfatal stroke, adjudicated by an independent committee.

In the present analysis, we defined WKF as % of change in estimated glomerular filtration rate (eGFR) at each study visit (month 1, 3, 6, 9, 12 and every 4 months up to month 32; after month 32 eGFR had >90% of values missing) relative to the randomization visit. An eGFR drop  $\geq 40\%$  from randomization, or  $< 15$  ml/min/1.73m<sup>2</sup>, or progression to dialysis was considered WKF. A WKF that persisted in two or more consecutive visits was considered a sustained worsening kidney function (sWKF). We used eGFR as calculated by the CKD-EPI formula.<sup>16</sup>

Additionally, we studied the association of WKF with subsequent occurrence of the study the primary endpoint, and also the occurrence of the composite of heart failure (HF) hospitalization or cardiovascular death, plus all-cause mortality.

### **Clinical and biomarker measurements**

Medical history and a physical examination were all recorded at randomization. A large protein biomarker panel with 92 biomarkers from a wide range of pathophysiological domains was measured (Olink® CVDII panel) at randomization. We selected this panel because it contains known human cardiovascular and inflammatory markers as well as some exploratory human proteins which may have potential as new markers of cardiovascular disease. These proteins are involved in multiple disease processes such as immune/inflammatory response, angiogenesis, coagulation, and cell adhesion. In short, the biomarkers were measured using a high-throughput technique using the Olink Proseek® Multiplex CVDII 96x96 kit, which simultaneously measures 92 proteins in 1µl of plasma. The kit uses a proximity extension assay technology, where 92 oligonucleotide-labelled antibody probe pairs bind to their respective target present in the sample. The platform provides Log<sub>2</sub> normalized protein expression (NPX) data wherein a high protein value corresponds to a high protein concentration, but not an absolute quantification.



The full proteins names from the CVDII panel are described in the *Supplemental Table 1*. For further details consult <https://www.olink.com/>.

In addition to the 92 Olink® biomarkers, high-sensitivity troponin I (hsTnI; troponin) was measured in plasma samples with the ARCHITECT i2000SR analyser (Abbott Laboratories®); urinary neutrophil gelatinase-associated lipocalin (uNGAL) was measured by enzyme immunoassay (R&D systems); and urinary kidney injury molecule-1 (uKIM-1) was measured by a microbead ELISA (R&D systems). Both uNGAL and uKIM-1 were indexed to urinary creatinine as recommended by the National Institute for Diabetes and Digestive and Kidney Diseases CKD biomarkers consortium.<sup>17</sup>

### **Statistical analyses**

Baseline characteristics of the patients were compared between those who developed and those who did not develop WKF throughout the follow-up by means of chi-square tests for categorical variables, t-tests for continuous normally distributed variables, and Wilcoxon rank sum tests for continuous non-normally distributed variables. Mixed effects models were used to test the association between the biomarker levels and the occurrence of WKF (mixed effects logistic regression), and the change in eGFR slope (mixed effects linear regression). All mixed effects models were adjusted on age, sex, baseline eGFR, anemia, diabetes duration, smoking, hypertension, prior HF hospitalization, use of diuretics, insulin, metformin, statins, randomized treatment assignment (alogliptin or placebo), study visit, and randomized treatment by study visits interactions; random effects were assigned to patients in panel data with unstructured covariance matrix to allow for correlation between repeated measures. The associations between biomarker levels and WKF (or eGFR slope) were studied in multivariable models fully adjusted on the

variables described in the previous step. To select the biomarker(s) with the strongest WKF predictive power while keeping the models parsimonious, we tested each individual biomarker while adjusting for the full list of covariates described previous step, and we retained only the biomarkers associated with WKF with a P-value of 0.0001 (1/10000) or less, which is a stricter selection than the conventionally used Bonferroni correction that would have given a P-value of 0.0005 or less ( $95/0.05 = 0.0005$ ). After this “pre-selection” process, all variables/biomarkers with a P-value  $\leq 0.0001$  were entered in a multivariable stepwise forward selection model with a P-value of less than 0.05 used to be retained in the model and we computed the area under the curve (AUC) of the model. After the stepwise selection, we then kept the variables with P-value  $\leq 0.0001$  from the model while comparing the AUC until we reach the simplest and final model without much compromise of the model’s accuracy. Afterwards, the linear predictor derived from the final model was divided in tertiles, and WKF events were plotted by tertiles of predicted risk. The association of WKF with subsequent cardiovascular outcomes was studied in time-updated Cox models, both crude and adjusted for the variables above described. All statistical analyses were performed with Stata® (StataCorp. 2019. Stata Statistical Software: Release 16.1. College Station, TX: StataCorp LLC).

## **Results**

### **Baseline patients’ characteristics by worsening kidney function status**

Patients who developed at least one WKF episode during the follow-up (n =222; 4.3%) were more frequently women (43 vs. 32%), had longer diabetes duration (10 vs. 7 years), were more frequently treated with insulin (41 vs. 30%), and less frequently treated with metformin (55 vs. 66%), smoked less (10 vs. 14%), had a

more frequent history of HF (46 vs. 28%), higher prevalence of anemia (47 vs 24%), more frequent kidney function impairment (eGFR <60: 46 vs. 28%), higher blood pressure (SBP >140: 26 vs. 20%), and were more frequently treated with diuretics (60 vs. 37%), and less frequently treated with statins (85 vs. 91%). *Table 1.*

### **Associations with worsening kidney function and eGFR slope changes**

Alogliptin (vs. placebo) had no statistically significant impact on eGFR slope of change during the follow-up: -1.11 (-2.55 to 0.33) ml/min,  $P = 0.13$ . *Supplemental Figure 1.*

In multivariable models, the strongest clinical variable associated with WKF was anemia:  $\beta = 1.39$  (0.96 to 1.82),  $Z = 6.4$ . *Supplemental Table 2.* In biomarkers (adjusted for clinical variables) the one with strongest association with WKF was blood KIM-1:  $\beta = 0.84$  (0.66 to 1.03) per Log<sub>2</sub> increase,  $Z = 9.1$ ; followed by platelet growth factor (PGF),  $Z = 7.1$ ; and TRAIL receptor 2 (TRAILR2),  $Z = 6.9$ . A total of 18 biomarkers were independently associated with WKF with a  $P$ -value  $\leq 0.0001$  ( $Z \leq 3.8$ ). Urinary KIM-1 was associated with WKF but with a much weaker association than blood KIM-1,  $Z = 2.9$  for urinary KIM-1. All biomarkers listed by descending order of strength of association with WKF are listed in the *Supplemental Table 3.* All the biomarkers associated with WKF were also associated with eGFR slope deterioration. *Supplemental Table 4.*

In multivariable models including all the variables (clinical and biomarkers) independently associated with WKF with a  $P$ -value  $\leq 0.0001$ , blood KIM-1 was (by far) the variable with strongest association with WKF, followed by anemia. KIM-1 alone provided good discrimination for the prediction of WKF (AUC = 0.73), while anemia alone provided only moderate discrimination and much lower than KIM-1

alone (AUC =0.65). *Table 2.* Urinary albumin-to-creatinine ratio (UACR) variable contains 42% (n =2245) missing values. As sensitivity analysis, we have adjusted our models to UACR (plus age, sex, and eGFR) in complete cases (n =2999) and after multiple imputation (n =5380), and KIM-1 remained the variable with the strongest association with the occurrence of WKF. *Supplemental Table 5.*

### **Worsening kidney function events by KIM-1 levels**

The predicted risk of WKF derived from KIM-1 alone was divided in tertiles (low, intermediate/medium, and high risk). Patients in the high risk tertile had a 6.7-fold higher risk of any WKF than patients classified as low risk, and the risk of sWKF was 12.5-fold higher in high risk compared with low risk. *Table 3 & Figure 1.*

### **Events after worsening kidney function**

In time-updated Cox models, the occurrence of WKF was independently associated with a higher risk of experiencing a subsequent primary outcome event: adjusted HR =4.25 (2.83-6.39); cardiovascular death or HF hospitalization: adjusted HR =6.19 (4.09-9.36); and all-cause mortality: adjusted HR =4.93 (3.06-7.96) (all P <0.0001).

*Figure 2.*

### **Discussion**

The present study shows that in more than 5000 patients with T2D and a recent ACS in whom 95 biomarkers (in both urine and blood) had been measured at baseline, blood KIM-1 was the biomarker with the strongest association with WKF. The occurrence of WKF was independently associated with a higher risk of subsequent cardiovascular events and mortality.

Identifying patients more likely to develop kidney dysfunction is important both for clinical practice and research. To date, the prediction of WKF is often performed by detecting rapid rises in serum creatinine or rapid decreases in eGFR, which is far from ideal, because it frequently represents overt WKF resulting in a late diagnosis, often at advanced stages of kidney injury where therapeutic options are limited and the prognosis is poor.<sup>18</sup> Therefore, more important is predicting the occurrence of WKF before its onset, so that preventive strategies can be implemented.<sup>19</sup> In this regard, several molecules, measured both in blood and urine, have been identified as potential markers for early detection of kidney damage before rises in serum creatinine or eGFR decline.<sup>20-23</sup> However, these markers are not routinely used in clinical practice nor for patient selection in clinical trials, due to limitations in accuracy and reproducibility.<sup>3, 6</sup>

In our study, blood KIM-1 was the biomarker the strongest association with WKF and was also strongly associated with eGFR slope deterioration over time. KIM-1 is upregulated in the proximal tubular cells following kidney injury.<sup>24</sup> The disruption of renal endothelial cells, with loss of cellular adhesion junctions and disruption of extra-cellular matrix, facilitates KIM-1 movement into the circulation and its blood detection, beyond its urinary excretion. In fact, raised levels of blood KIM-1 may represent a more severe kidney injury due to the disruption of the endothelial barrier.<sup>25</sup> Higher levels of blood KIM-1 have been shown to predict acute and chronic kidney injury in patients with type 1 diabetes,<sup>4, 26</sup> long-term deterioration of kidney function in the general population,<sup>27</sup> and poorer renal function in HF.<sup>28</sup> In a study including patients with type 1 diabetes without proteinuria in whom both blood and urine KIM-1 were measured, blood KIM-1 (but not urine KIM-1) was the biomarker more strongly associated with kidney function decline.<sup>26</sup> In a previous analysis of the

EXAMINE trial studying urinary KIM-1 and NGAL not measuring blood biomarkers, neither urinary KIM-1 nor urinary NGAL improved the prediction of eGFR decline.<sup>29</sup> These findings were concordant with the present analysis, where both blood and urine KIM-1 were measured, but blood KIM-1 had a stronger association with WKF and renal function “slope” decline than urinary KIM-1, urinary NGAL or any other measured biomarker. Our results suggest that damage to proximal tubules with disruption of the endothelial barrier plays an independent role in the development and progression of kidney dysfunction.

Important clinical and research implications can be drawn from these findings. Due to extensive replication and strong prediction capacity, blood KIM-1 could be implemented for the prediction of kidney function decline in the clinical setting, allowing to individualize preventive strategies to patients at higher risk of kidney dysfunction progression. These preventive strategies might include treatment with sodium glucose co-transporter 1/2 inhibitors and finerenone, that have been shown to reduce WKF and prevent kidney function decline in patients with and without diabetes.<sup>10-13, 30, 31</sup> Interestingly, empagliflozin has been shown to reduce the urinary levels of KIM-1, suggesting that empagliflozin may reduce tubular injury and improve the function of the proximal tubule.<sup>32</sup>

Blood KIM-1 can also be used in clinical trials for risk enrichment of kidney outcomes, allowing to increase the number of events and the study power, tailored to patients who might benefit the most from the treatment being studied.<sup>33</sup> Furthermore, along with brain natriuretic peptides and troponin, that strongly predict cardiovascular events,<sup>34</sup> the addition of KIM-1 for WKF prediction, may allow an optimal risk assessment of cardio-kidney endpoints.<sup>33</sup>

## **Limitations**

Some limitations should be acknowledged in this study. This is a post-hoc analysis of a randomized controlled trial subject to biases inherent to observational data. Blood KIM-1 and all the Olink® biomarkers represent normalized concentrations and cannot be translated into cut-points ready for clinical use. Further studies using other laboratorial techniques for measuring blood KIM-1 (e.g., ELISA) are warranted to validate our findings. Despite extensive replication of blood KIM-1 as a biomarker strongly associated with WKF in several populations, further data are needed for patients with T2D and an ACS, where our study is unique. Urinary albumin-to-creatinine ratio has 42% of missing values in EXAMINE; still in sensitivity analysis adjusting for urinary albumin-to-creatinine ratio (plus age, sex, and eGFR), KIM1 remained the variable with strongest associated with WKF.

## **Conclusions**

In patients with T2D and a recent ACS, blood KIM-1 was the biomarker with the strongest association with WKF. The occurrence of WKF was independently associated with a higher risk of subsequent cardiovascular events and mortality. Further studies are needed to confirm these hypothesis generating findings and assess whether KIM-1 could be implemented for early prediction of kidney outcomes in the clinical setting.

## **Availability of Data and Materials**

The data and materials may be available upon reasonable request.

## **Funding**

The EXAMINE study was funded by Takeda but the present analysis did not receive funding.

## **Disclosures**

Dr Ferreira is a consultant for Boehringer-Ingelheim, and receives research support from AstraZeneca and Novartis. Dr Rossignol reports personal fees from Ablative Solutions, AstraZeneca, Bayer, Boehringer-Ingelheim, Corvidia, CVRx, Fresenius, G3P (stocks), Grunenthal, Idorsia, KBP, Novartis, NovoNordisk, Relypsa, Sanofi, Sequana Medical, Servier, Stealth Peptides, Vifor, Vifor Fresenius Medical Care Renal Pharma; and Cofounder: CardioRenal, a company developing sensors for the home monitoring of potassium and creatinine. Dr Zannad reports personal fees from Boehringer Ingelheim during the conduct of the study; personal fees from Janssen, Novartis, Boston Scientific, Amgen, CVRx, AstraZeneca, Vifor Fresenius, Cardior, Cereno pharmaceutical, Applied Therapeutics, Merck, Bayer, and Cellprothera outside the submitted work; and other support from CVCT and Cardiorenal, outside the submitted work. Dr Bakris, has received personal fees from Takeda Development Center, is a consultant for Merck, Relypsa, and is on the steering committee for international renal/CV outcomes trials for Janssen, Bayer, Vascular Dynamics. Dr White has received research support from the National Institute of



Aging (NIH) and personal fees from Takeda Development Center (Deerfield, IL, USA) during the conduct of the EXAMINE trial until 2016 (Steering Committee Chair). All the other authors reported not having potential conflicts of interest relevant to this article.

## **Acknowledgments**

EXAMINE is a clinical trial sponsored by Takeda Global Research and Development Center, Inc., Deerfield, IL. The authors are solely responsible for the design of the study, all study analyses, and the drafting and editing of the manuscript and its final contents.

Clinical trials identifier: [Clinicaltrials.gov-NCT00968708](https://clinicaltrials.gov/ct2/show/study/NCT00968708).

JPF, PR, FZ are supported by a public grant overseen by the French National Research Agency (ANR) as part of the second “Investissements d’Avenir” programme (ANR-15-RHU-0004). All the other authors have nothing to disclose with regards to this manuscript.

JPF wrote the manuscript, performed the statistical analysis and made critical revisions; CM contributed to the oversight of the EXAMINE trial, as a steering committee member and to discussion and reviewed/edited the manuscript including the revision of the statistical methods and analysis; GB contributed to the oversight of the EXAMINE trial, as a steering committee member and reviewed/edited the manuscript; PR reviewed/edited the manuscript; WBW contributed to the oversight of the EXAMINE trial, as the principal investigator of the trial, and reviewed/edited the manuscript; FZ contributed to the oversight of the EXAMINE trial, as a steering committee member discussion and reviewed/edited the manuscript.

Dr. João Pedro Ferreira is the guarantor of this work and, as such, had full access to all the data in the study and takes responsibility for the integrity of the data and the accuracy of the data analysis.

## References

1. Ritz E, Orth SR. Nephropathy in patients with type 2 diabetes mellitus. *N Engl J Med*. Oct 7 1999;341(15):1127-33. doi:10.1056/nejm199910073411506
2. Potier L, Roussel R, Zeller M, et al. Chronic Kidney Disease, Diabetes, and Risk of Mortality After Acute Myocardial Infarction: Insight From the FAST-MI Program. *Diabetes Care*. 2020:e43-e44. vol. 3.
3. Legrand M, Rossignol P. Cardiovascular Consequences of Acute Kidney Injury. *N Engl J Med*. Jun 4 2020;382(23):2238-2247. doi:10.1056/NEJMra1916393
4. Sabbiseti VS, Waikar SS, Antoine DJ, et al. Blood kidney injury molecule-1 is a biomarker of acute and chronic kidney injury and predicts progression to ESRD in type I diabetes. *J Am Soc Nephrol*. Oct 2014;25(10):2177-86. doi:10.1681/asn.2013070758
5. Zhang WR, Craven TE, Malhotra R, et al. Kidney Damage Biomarkers and Incident Chronic Kidney Disease During Blood Pressure Reduction: A Case-Control Study. *Ann Intern Med*. Nov 6 2018;169(9):610-618. doi:10.7326/m18-1037
6. Ronco C, Bellomo R, Kellum JA. Acute kidney injury. *Lancet*. Nov 23 2019;394(10212):1949-1964. doi:10.1016/s0140-6736(19)32563-2
7. Coca SG, Parikh CR. Urinary biomarkers for acute kidney injury: perspectives on translation. *Clin J Am Soc Nephrol*. Mar 2008;3(2):481-90. doi:10.2215/cjn.03520807
8. Vaduganathan M, White WB, Charytan DM, et al. Relation of Serum and Urine Renal Biomarkers to Cardiovascular Risk in Patients with Type 2 Diabetes Mellitus and Recent Acute Coronary Syndromes (From the EXAMINE Trial). *Am J Cardiol*. Feb 1 2019;123(3):382-391. doi:10.1016/j.amjcard.2018.10.035
9. Ostermann M, Zarbock A, Goldstein S, et al. Recommendations on Acute Kidney Injury Biomarkers From the Acute Disease Quality Initiative Consensus Conference: A Consensus Statement. *JAMA Netw Open*. Oct 1 2020;3(10):e2019209. doi:10.1001/jamanetworkopen.2020.19209
10. Zelniker TA, Wiviott SD, Raz I, et al. SGLT2 inhibitors for primary and secondary prevention of cardiovascular and renal outcomes in type 2 diabetes: a systematic review and meta-analysis of cardiovascular outcome trials. *Lancet*. Jan 5 2019;393(10166):31-39. doi:10.1016/s0140-6736(18)32590-x
11. Bakris GL, Agarwal R, Anker SD, et al. Effect of Finerenone on Chronic Kidney Disease Outcomes in Type 2 Diabetes. *N Engl J Med*. Dec 3 2020;383(23):2219-2229. doi:10.1056/NEJMoa2025845
12. Bhatt DL, Szarek M, Pitt B, et al. Sotagliflozin in Patients with Diabetes and Chronic Kidney Disease. *N Engl J Med*. Nov 16 2020;doi:10.1056/NEJMoa2030186
13. Filippatos G, Anker SD, Agarwal R, et al. Finerenone and Cardiovascular Outcomes in Patients With Chronic Kidney Disease and Type 2 Diabetes. *Circulation*. Feb 9 2021;143(6):540-552. doi:10.1161/circulationaha.120.051898
14. White WB, Cannon CP, Heller SR, et al. Alogliptin after acute coronary syndrome in patients with type 2 diabetes. *N Engl J Med*. Oct 3 2013;369(14):1327-35. doi:10.1056/NEJMoa1305889
15. White WB, Bakris GL, Bergenstal RM, et al. EXamination of cArdiovascular outcoMes with alogliptIN versus standard of carE in patients with type 2 diabetes mellitus and acute coronary syndrome (EXAMINE): a cardiovascular safety study of the dipeptidyl peptidase 4 inhibitor alogliptin in patients with type 2 diabetes with

acute coronary syndrome. *Am Heart J.* Oct 2011;162(4):620-626.e1.

doi:10.1016/j.ahj.2011.08.004

16. Ferreira JP, Girerd N, Pellicori P, et al. Renal function estimation and Cockcroft-Gault formulas for predicting cardiovascular mortality in population-based, cardiovascular risk, heart failure and post-myocardial infarction cohorts: The Heart 'OMics' in AGEing (HOMAGE) and the high-risk myocardial infarction database initiatives. *BMC Med.* Nov 10 2016;14(1):181. doi:10.1186/s12916-016-0731-2
17. Fufaa GD, Weil EJ, Nelson RG, et al. Association of urinary KIM-1, L-FABP, NAG and NGAL with incident end-stage renal disease and mortality in American Indians with type 2 diabetes mellitus. *Diabetologia.* Jan 2015;58(1):188-98. doi:10.1007/s00125-014-3389-3
18. Singbartl K, Bishop JV, Wen X, et al. Differential effects of kidney-lung cross-talk during acute kidney injury and bacterial pneumonia. *Kidney Int.* Sep 2011;80(6):633-44. doi:10.1038/ki.2011.201
19. Chawla LS, Bellomo R, Bihorac A, et al. Acute kidney disease and renal recovery: consensus report of the Acute Disease Quality Initiative (ADQI) 16 Workgroup. *Nat Rev Nephrol.* Apr 2017;13(4):241-257. doi:10.1038/nrneph.2017.2
20. Mori K, Lee HT, Rapoport D, et al. Endocytic delivery of lipocalin-siderophore-iron complex rescues the kidney from ischemia-reperfusion injury. *J Clin Invest.* Mar 2005;115(3):610-21. doi:10.1172/jci23056
21. Ismail OZ, Zhang X, Wei J, et al. Kidney injury molecule-1 protects against G $\alpha$ 12 activation and tissue damage in renal ischemia-reperfusion injury. *Am J Pathol.* May 2015;185(5):1207-15. doi:10.1016/j.ajpath.2015.02.003
22. Parikh CR, Thiessen-Philbrook H, Garg AX, et al. Performance of kidney injury molecule-1 and liver fatty acid-binding protein and combined biomarkers of AKI after cardiac surgery. *Clin J Am Soc Nephrol.* Jul 2013;8(7):1079-88. doi:10.2215/cjn.10971012
23. Kashani K, Al-Khafaji A, Ardiles T, et al. Discovery and validation of cell cycle arrest biomarkers in human acute kidney injury. *Crit Care.* Feb 6 2013;17(1):R25. doi:10.1186/cc12503
24. Ichimura T, Bonventre JV, Bailly V, et al. Kidney injury molecule-1 (KIM-1), a putative epithelial cell adhesion molecule containing a novel immunoglobulin domain, is up-regulated in renal cells after injury. *J Biol Chem.* Feb 13 1998;273(7):4135-42. doi:10.1074/jbc.273.7.4135
25. Sutton TA, Fisher CJ, Molitoris BA. Microvascular endothelial injury and dysfunction during ischemic acute renal failure. *Kidney Int.* Nov 2002;62(5):1539-49. doi:10.1046/j.1523-1755.2002.00631.x
26. Nowak N, Skupien J, Niewczas MA, et al. Increased plasma kidney injury molecule-1 suggests early progressive renal decline in non-proteinuric patients with type 1 diabetes. *Kidney Int.* Feb 2016;89(2):459-67. doi:10.1038/ki.2015.314
27. Schulz CA, Engström G, Nilsson J, et al. Plasma kidney injury molecule-1 (p-KIM-1) levels and deterioration of kidney function over 16 years. *Nephrol Dial Transplant.* Feb 1 2020;35(2):265-273. doi:10.1093/ndt/gfy382
28. Emmens JE, Ter Maaten JM, Matsue Y, et al. Plasma kidney injury molecule-1 in heart failure: renal mechanisms and clinical outcome. *Eur J Heart Fail.* Jun 2016;18(6):641-9. doi:10.1002/ejhf.426
29. Garlo KG, White WB, Bakris GL, et al. Kidney Biomarkers and Decline in eGFR in Patients with Type 2 Diabetes. *Clin J Am Soc Nephrol.* Mar 7 2018;13(3):398-405. doi:10.2215/cjn.05280517

30. Zannad F, Ferreira JP, Pocock SJ, et al. SGLT2 inhibitors in patients with heart failure with reduced ejection fraction: a meta-analysis of the EMPEROR-Reduced and DAPA-HF trials. *Lancet*. Aug 28 2020;doi:10.1016/s0140-6736(20)31824-9
31. Ferreira JP, Oliveira AC, Saraiva FA, Vasques-Nóvoa F, Leite-Moreira A. Sodium-glucose co-transporter inhibitors in insulin-treated diabetes: a meta-analysis. *Eur J Endocrinol*. Mar 1 2021;doi:10.1530/eje-20-1484
32. Opingari E, Verma S, Connelly KA, et al. The impact of empagliflozin on kidney injury molecule-1: a subanalysis of the Effects of Empagliflozin on Cardiac Structure, Function, and Circulating Biomarkers in Patients with Type 2 Diabetes CardioLink-6 trial. *Nephrol Dial Transplant*. 2020:895-897. vol. 5.
33. Patel RB, Ter Maaten JM, Ferreira JP, et al. Challenges of Cardio-Kidney Composite Outcomes in Large-Scale Clinical Trials. *Circulation*. Jan 7 2021;doi:10.1161/circulationaha.120.049514
34. Ferreira JP, Sharma A, Mehta C, et al. Multi-proteomic approach to predict specific cardiovascular events in patients with diabetes and myocardial infarction: findings from the EXAMINE trial. *Clin Res Cardiol*. Aug 13 2020;doi:10.1007/s00392-020-01729-3

Table 1. Baseline patients' characteristics by worsening kidney function status

Variable	No WKF	WKF	P
N. =5131	4909	222	
Age (years)	60.9 ± 9.9	61.8 ± 10.1	0.19
Age >65yr	1735 (35.3%)	88 (39.6%)	0.19
Male	3359 (68.4%)	127 (57.2%)	<0.001
Duration of T2D (years)	7.0 (2.6, 13.5)	10.4 (4.0, 17.4)	<0.001
HBA1c (%)	8.0 ± 1.1	8.0 ± 1.0	0.66
Insulin	1451 (29.6%)	90 (40.5%)	<0.001
Metformin	3265 (66.5%)	122 (55.0%)	<0.001
Sulfonylureas	2287 (46.6%)	97 (43.7%)	0.40
Thiazolidinediones	117 (2.4%)	9 (4.1%)	0.12
BMI (kg/m2)	29.5 ± 5.5	29.8 ± 6.4	0.37
Race			0.33
White	3580 (72.9%)	160 (72.1%)	
Asian	997 (20.3%)	41 (18.5%)	
Black	187 (3.8%)	10 (4.5%)	
Other	145 (3.0%)	11 (5.0%)	
Smoker (current)	683 (13.9%)	21 (9.5%)	0.059
MI (history)	4320 (88.0%)	191 (86.0%)	0.38
HF (history)	1369 (27.9%)	103 (46.4%)	<0.001
Stroke (history)	344 (7.0%)	20 (9.0%)	0.26
PAD (history)	461 (9.4%)	27 (12.2%)	0.17
Atrial Fibrillation	343 (7.0%)	17 (7.7%)	0.70
Index event MI	3780 (77.2%)	169 (76.5%)	0.81
Index event ACS	1118 (22.8%)	52 (23.5%)	
Hemoglobin (g/dL)	13.5 ± 1.6	12.6 ± 1.6	<0.001
Anemia	1184 (24.2%)	104 (46.8%)	<0.001
eGFR (ml/min/1.73 m2)	71.2 ± 21.1	63.9 ± 27.0	<0.001
eGFR <60	1383 (28.2%)	102 (45.9%)	<0.001
Heart rate (bpm)	71.4 ± 10.8	72.3 ± 12.1	0.19
SBP (mmHg)	128.9 ± 16.6	132.3 ± 17.5	0.003
SBP >140	983 (20.0%)	58 (26.1%)	0.027
Antiplatelet agents	4773 (97.2%)	218 (98.2%)	0.39
Beta-blockers	4034 (82.2%)	183 (82.4%)	0.92
ACEi or ARB	4054 (82.6%)	179 (80.6%)	0.45
Calcium channel blockers	1084 (22.1%)	58 (26.1%)	0.16
Diuretics	1792 (36.5%)	133 (59.9%)	<0.001
Statins	4462 (90.9%)	189 (85.1%)	0.004
Randomized to alogliptin	2456 (50.0%)	126 (56.8%)	0.050

Legend: WKF, worsening kidney function (first occurrence); T2D, type 2 diabetes; HBA1c, glycated hemoglobin; BMI, body mass index; MI, myocardial infarction; HF, heart failure; PAD, peripheral artery disease; ACS, acute coronary syndrome; eGFR, estimated glomerular filtration rate; SBP, systolic blood pressure; ACEi or ARB, angiotensin converting enzyme inhibitors or angiotensin receptor blockers.

Table 2. Multivariable stepwise models predicting worsening kidney function

<b>Biomarker</b>	<b>Beta coef. (95%CI)</b>	<b>Z-score</b>	<b>P-value</b>
<b>Model 1</b>			
KIM-1	0.50 (0.36 to 0.65)	6.6	<0.00001
Anemia	0.70 (0.36 to 1.04)	4.0	0.00005
VEGFD	0.76 (0.32 to 1.20)	3.4	0.001
IL4RA	0.50 (0.21 to 0.80)	3.3	0.001
uNGAL	0.11 (0.03 to 0.19)	2.8	0.006
SPON2	-0.88 (-1.64 to -0.13)	-2.3	0.022
<i>AUC =0.78</i>	-	-	-
<b>Model 2</b>			
KIM-1	0.78 (0.63 to 0.92)	10.6	0.00001
Anemia	0.90 (0.54 to 1.26)	4.9	0.00001
<i>AUC =0.76</i>	-	-	-
<b>Model 3 *</b>			
KIM-1	0.78 (0.66 to 0.89)	12.9	0.00001
<i>AUC =0.73</i>	-	-	-

Legend: KIM-1, kidney injury molecule 1; VEGFD, vascular endothelial growth factor-D; IL4RA, interleukin 4 receptor alfa subunit; uNGAL, urinary neutrophil gelatinase-associated lipocalin; SPON2, spondin 2.

The correlation coefficient of KIM-1 with the other proteins was not greater than 0.5. Model 1 shows the results of the stepwise forward model that started with all the variables with a P-value  $\leq 0.0001$  shown in the Supplemental Tables 2 & 3 (light green), the retained variables with a P-value of  $< 0.05$  to stay in the model are shown in the Model 1 of this table; Model 2 shows the results after keeping only the variables with a P-value  $\leq 0.0001$  in Model 1; Model 3 is a simplest model retaining only KIM-1, the variable with strongest association with worsening kidney function.

\*Anemia alone gave an AUC =0.65.

Table 3. Worsening kidney function events by tertiles of risk predicted from blood KIM-1 levels

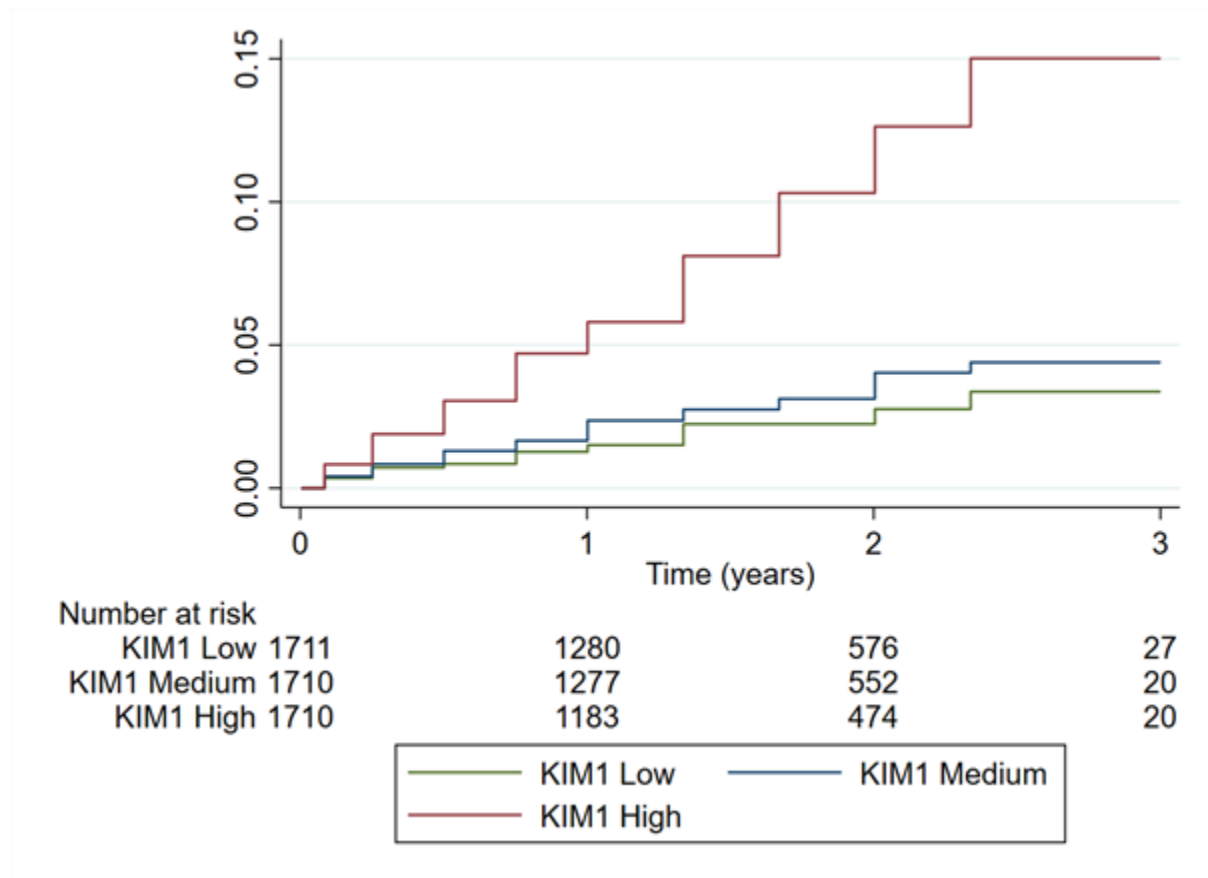
<b>KIM-1 predicted risk</b>	<b>Low</b>	<b>Intermediate</b>	<b>High</b>	<b>Total</b>
<b>Total WKF (first and recurrent)</b>				
No WKF	11455	11471	11217	34143
WKF	44 (0.4)	58 (0.5)	216 (1.9)	318
OR (95%CI)	Ref.	1.40 (0.83-2.36)	6.68 (4.15-10.76)	-
<i>AUC =0.73</i>	-	-	-	-
<b>First WKF</b>				
No WKF	1675	1662	1572	4909
WKF	36 (2.1)	48 (2.8)	138 (8.1)	222
HR (95%CI)	Ref.	1.37 (0.89-2.11)	4.2 (2.91-6.06)	-
<i>C-index =0.69</i>	-	-	-	-
<b>sWKF</b>				
No WKF	1707	1700	1644	5071
WKF	4 (0.2)	10 (0.6)	46 (2.7)	60
HR (95%CI)	Ref.	2.55 (0.80-8.13)	12.46 (4.48-34.60)	-
<i>C-index =0.80</i>	-	-	-	-

Legend: WKF, worsening kidney function; sWKF, sustained worsening kidney function; KIM-1, kidney injury molecule 1; OR, odds ratio; HR, hazard ratio; 95%CI, 95% confidence interval; AUC, area under the curve.

Low, intermediate, and high represent the tertiles of predicted risk from KIM-1 levels. KIM-1 predicted the occurrence of WKF in an incremental manner, regardless of the WKF definition.



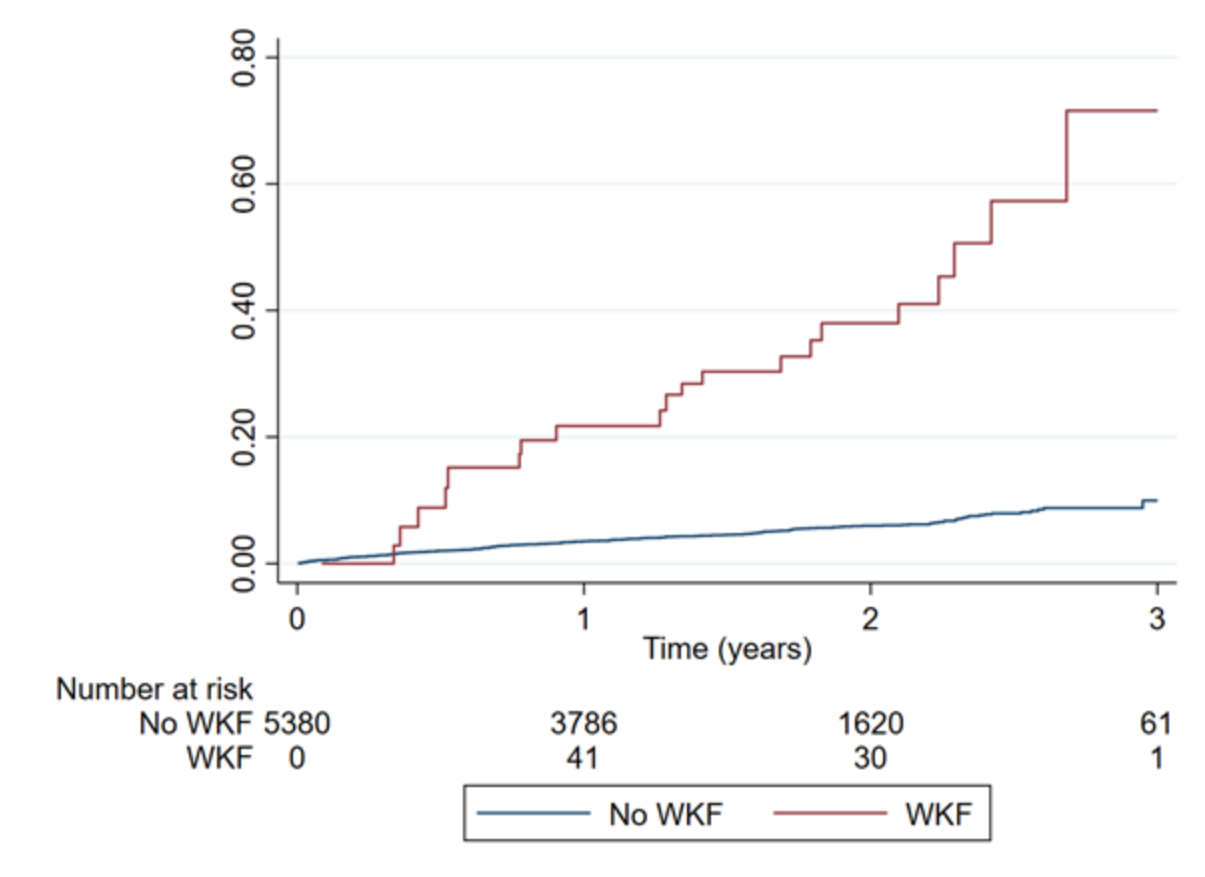
Figure 1. Worsening kidney function events by tertiles of risk predicted from blood KIM-1 levels



Legend: KIM-1, kidney injury molecule 1.

Caption: Higher KIM-1 levels predict worsening kidney function events defined by a deterioration in eGFR  $\geq 40\%$  from baseline.

Figure 2. Death after a worsening kidney function event



Legend: WKF, worsening kidney function defined by a deterioration in eGFR  $\geq 40\%$  from baseline.

Caption: Crude HR (95%CI) =8.05 (5.08-12.76), P <0.0001.