



HAL
open science

The N170 is sensitive to long-term (personal) familiarity of a face identity

Stephanie Caharel, Bruno Rossion

► **To cite this version:**

Stephanie Caharel, Bruno Rossion. The N170 is sensitive to long-term (personal) familiarity of a face identity. *Neuroscience*, 2021, 458, pp.244-255. 10.1016/j.neuroscience.2020.12.036 . hal-03629076

HAL Id: hal-03629076

<https://hal.univ-lorraine.fr/hal-03629076>

Submitted on 10 Mar 2023

HAL is a multi-disciplinary open access archive for the deposit and dissemination of scientific research documents, whether they are published or not. The documents may come from teaching and research institutions in France or abroad, or from public or private research centers.

L'archive ouverte pluridisciplinaire **HAL**, est destinée au dépôt et à la diffusion de documents scientifiques de niveau recherche, publiés ou non, émanant des établissements d'enseignement et de recherche français ou étrangers, des laboratoires publics ou privés.



Distributed under a Creative Commons Attribution - NonCommercial 4.0 International License

The N170 is sensitive to long-term (personal) familiarity of a face identity

Stéphanie Caharel^{1,2} & Bruno Rossion^{3,4*}

1. Université de Lorraine, Laboratoire Lorrain de Psychologie et Neurosciences (2LPN - EA 7489), Nancy F-54000, France
2. Institut Universitaire de France, Paris F-75000, France
3. Université de Lorraine, CNRS, CRAN, F-54000 Nancy, France
4. CHRU-Nancy, Service de Neurologie, F-54000, France

*** Corresponding author:**

Bruno Rossion

CRAN UMR 7039, CNRS - Université de Lorraine,

2 Avenue de la forêt de Haye

54516 Vandoeuvre-lès-Nancy, France.

Tel: +33 (0)3 83 85 80 53

E-mail: bruno.rossion@univ-lorraine.fr

Abstract

The N170 is a large deflection of the human electroencephalogram (EEG), peaking at about 170 milliseconds over the occipito-temporal cortex after the sudden onset of a face stimulus. The N170 reflects perceptual awareness of a face and its onset corresponds to the emergence of reliable face-selectivity in the human brain. However, whether sensitivity to the long-term familiarity of a face identity emerges already at this early time-point remains debated. Here we provide a brief survey of the 45 published studies comparing the N170 response to unfamiliar and familiar (famous, experimentally familiarized, personally familiar and own) faces. Even though effects of familiarity on the N170 are relatively small and inconsistent across studies, this overview indicates that face familiarity significantly increases the N170 amplitude. This effect is especially present for personally familiar faces, learned in natural conditions. In the human brain, effects linked to familiarity with specific facial identities therefore appear to emerge between 150-200 ms in occipito-temporal brain regions, i.e. shortly after the onset of face-selectivity but at the same time as the earliest high-level effects of immediate unfamiliar face identity repetition. This observation challenges standard neurocognitive models with a clear-cut distinction between perceptual and memory stages in human face recognition.

Keywords: Event-related potential, N170, Face familiarity, Face identity, EEG

Introduction

The N170 event-related potential (ERP) component is a relatively large deflection of the human electroencephalogram (EEG) peaking on average at about 170 milliseconds (ms) after the sudden onset of a face stimulus (with an interindividual variability range between 130 and 200 ms). Initially described by Srebro (1985) in an elegant study linking this ERP to face perception, i.e. the subjective experience of seeing a stimulus as a face, it was defined later on by Bentin and colleagues (Bentin et al., 1996), who established the larger N170 amplitude to faces than other familiar visual shapes (Fig. 1; see Rossion and Jacques, 2008 for a review of the face-selectivity of the N170). The N170 is maximal in amplitude on recording electrodes positioned over the occipito-temporal cortex, with generally a larger response in the right hemisphere, and emerges concurrently to a positive potential recorded on central electrode sites, the vertex positive potential (VPP; Bötzel and Grüsser, 1989; Jeffreys, 1989; see Jeffreys, 1996 for review). The N170 and VPP typically show similar response properties (Joyce and Rossion, 2005). One of the most salient, category-selective, response properties of the N170 is its larger amplitude and delayed latency following picture-plane inversion of a face stimulus (e.g., Rossion et al., 2000; Itier and Taylor, 2002). Over the last four decades, the N170 component has been described in hundreds, perhaps more than a thousand, of studies (Eimer, 2011; Rossion and Jacques, 2011 for reviews). In recent years, the N170 has been used as an index of deficient face recognition abilities in clinical populations, with moderate limited success (e.g., in Autism Spectrum Disorders (ASD): Batty et al., 2011; in schizophrenia: Obayashi et al., 2009; for reviews, see McCleery et al., 2015; Bortolon et al., 2015; Alzheimer's Disease: Saavedra et al., 2012; for a review of neurological and psychiatric disorders: Feuerriegel et al., 2015).

Despite, or perhaps due to, this flurry of research, whether the N170 is sensitive to the long-term familiarity of a face identity, i.e. does it differ significantly and reliably for pictures of unfamiliar vs. familiar faces (e.g., celebrities, experimentally familiarized, personally familiar, or even one's own face) remains an outstanding issue. While some ERP studies have reported long-term face familiarity effects (i.e., often amplitude increases) on the N170 (e.g., Caharel et al., 2005; Barragan-Jason et al., 2015), others have not reported such effects (e.g., Tanaka et al., 2006; Gosling and Eimer, 2011). Since these familiarity effects have been more consistently observed on subsequent ERP components (e.g., the N250; Schweinberger, et al., 2002a; Schweinberger, et al., 2002b; Tanaka et al., 2006; Wiese et al., 2019a; Wiese et al., 2019b), the standard view in the scientific literature is that the N170 is an electrophysiological marker of a "perceptual stage" in face recognition (e.g., a "structural encoding stage" according to Bruce and Young, 1986's influential model), which is followed by ERP components marking the access to representations of facial identities stored in memory (see Bentin et al., 1996; Bentin and Deouell, 2000; Eimer, 2000a; Eimer,

2000b; Eimer; 2011; Schweinberger and Neumann, 2016). From the point of view of fundamental research, clarifying this issue is therefore important because it can provide constraints on our understanding of the neurofunctional organization of human face recognition, i.e. how early in time is this function shaped by specific memories from our lifetime experience. Moreover, at least with a standard (i.e., slow and jittered) mode of visual stimulation to elicit ERPs, the N170 indexes the only reliable category-selective time-window (Fig. 1; Rossion and Jacques, 2008; Rousselet et al., 2008; Ganis et al., 2012), so that long-term familiarity effects observed during this window may be related to the contribution of face-selective populations of neurons. From the point of view of applied research, since the N170 is a very clear ERP, it could potentially serve as an implicit index to determine whether one knows a specific face identity or not.

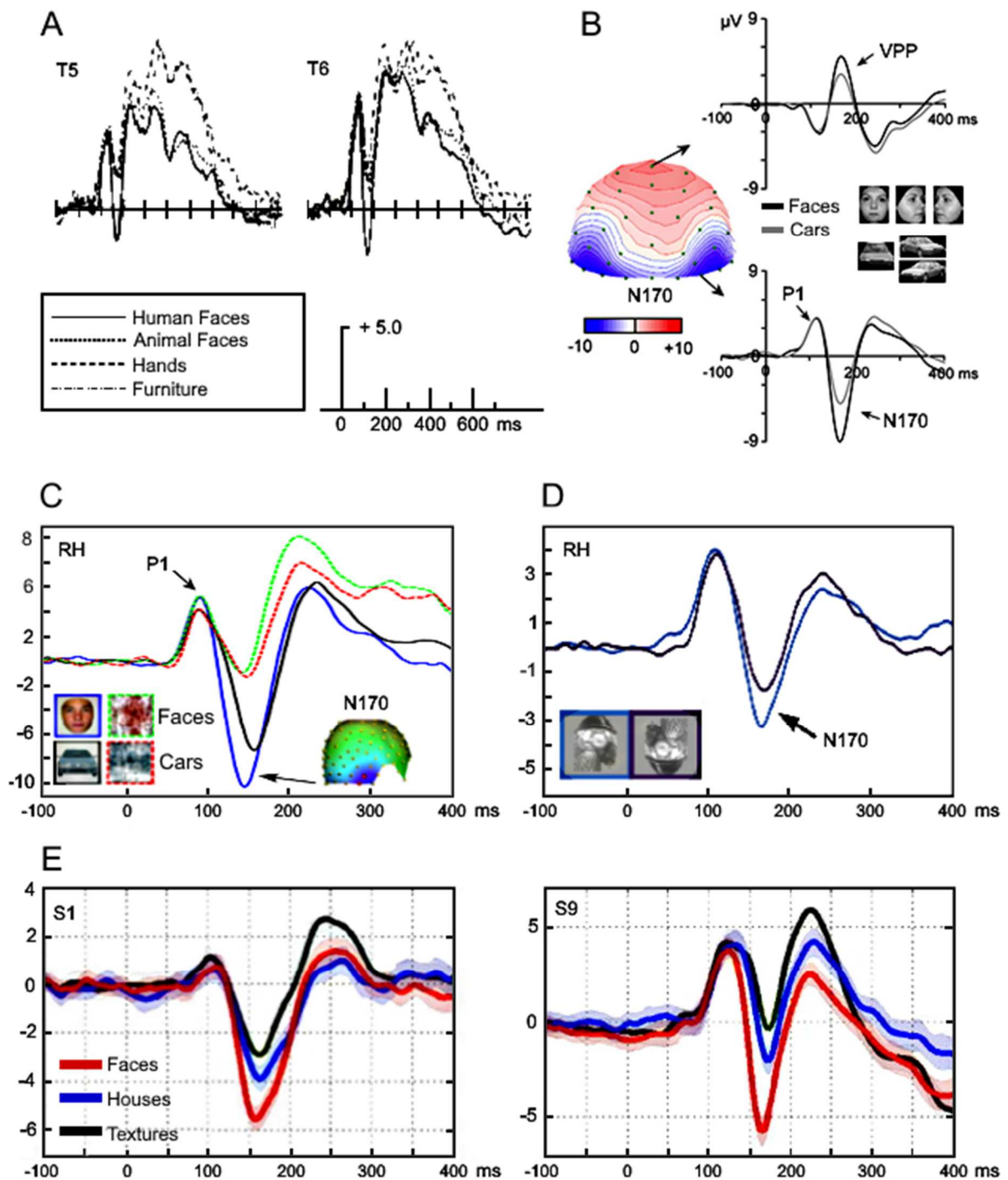


Fig. 1. Grand average ERP waveforms elicited by different categories of stimuli at occipito-temporal electrode sites. Figures adapted from the studies of (A) Bentin et al. (1996), (B) Rossion and Jacques (2008), and (C) Rossion and Caharel (2011). The N170 is systematically larger in response to pictures of faces than to other categories and is practically absent for meaningless stimuli. This face-selectivity occurs well before the peak of the N170, at around 120-130 ms following stimulus onset, and is often limited to this time window (i.e., until 200ms). (D) When pictures of the paintings of G. Arcimboldo are presented upright and usually lead to the perception of a face stimulus, a larger N170 is observed than when the exact same pictures are presented inverted and do not lead to the perception of a face (Figure adapted from Caharel et al., 2013). (E) The face-selectivity of the N170 is often clearly observed on ERP data of individual subjects (Figure adapted from Rousselet et al., 2008).

Selection of ERP studies comparing familiar and unfamiliar faces

In this brief review, we provide a list of all the published studies - to the best of our knowledge - that have directly contrasted the N170 elicited by pictures of unfamiliar and familiar faces in human adults. We also consider studies using magnetoencephalography (MEG), focusing on the M170 component (e.g., Kloth et al., 2006). Importantly, we do not consider studies that have compared the immediate repetition of a given face identity compared with the immediate presentation of different faces (i.e., face A followed immediately by face A or by face B) without directly comparing familiar to unfamiliar faces. For instance, the earliest ERP study testing immediate repetition of face identity reported an increase for different over repeated faces for familiar faces on a posterior ERP component corresponding to the N170 (Barrett et al., 1988). While this effect was found for familiar but not unfamiliar faces tested in the same repetition conditions, indicating a genuine effect of familiarity at that latency, the authors did not directly compare familiar to unfamiliar faces. Moreover, we do not extend our review to face familiarity effects reported at different (i.e., typically later) time-windows in the EEG than the N170 (i.e., genuine post 200 ms effects, e.g., Wiese et al., 2019a; Wiese et al., 2019b; or very early effects likely due to low-level physical differences between images, e.g., Seeck et al., 1997; Dobs et al., 2019). Finally, for the sake of fair comparison, our review focuses on studies reporting ERPs to adult faces only (e.g., excluding studies with children faces as seen by their own mothers; Grasso et al., 2009). However, our brief survey includes all studies contrasting responses to unfamiliar with familiar faces, such as those of famous and personally familiar persons, the participants' own faces, as well as experimentally familiarized faces, and this regardless of the task used. It also considers studies using not only photographic faces but also pictures of faces manipulated experimentally (Mooney, caricatures, ...). Only data from healthy adult participants with no sign of mental or neurological disorder are taken into account. Finally, only papers written in an English language are included.

Studies were selected from searches on the Pubmed and Google Scholar databases. The terms used for this search included ("N170" or "M170" "ERP" or "MEG") and ("familiarity" or "familiar"). From the relevant articles from this research, a review of cited references was also carried out in order to find other articles. Overall, we identified 45 EEG or MEG studies that directly contrasted the N170 in response to familiar vs. unfamiliar faces. The following information were extracted from each of these studies and reported in tables (from 1 to 3) below: the number and mean age of participants, the task performed, the type of familiar faces, the number of faces and their repetition, and the reference electrode used for analyses.

The key contribution of personally familiar faces on the N170 familiarity effect

Among all the studies included in the survey, twenty-one (46,7%) reported a significantly larger N170 amplitude to pictures of familiar faces (Table 1; Fig. 2) and twenty-one (46,7%) failed to report any significant difference (Table 2). Remarkably, only very few studies (3; 6,7%) found a significant difference in the other direction, i.e. a smaller N170 for familiar faces (Table 3).

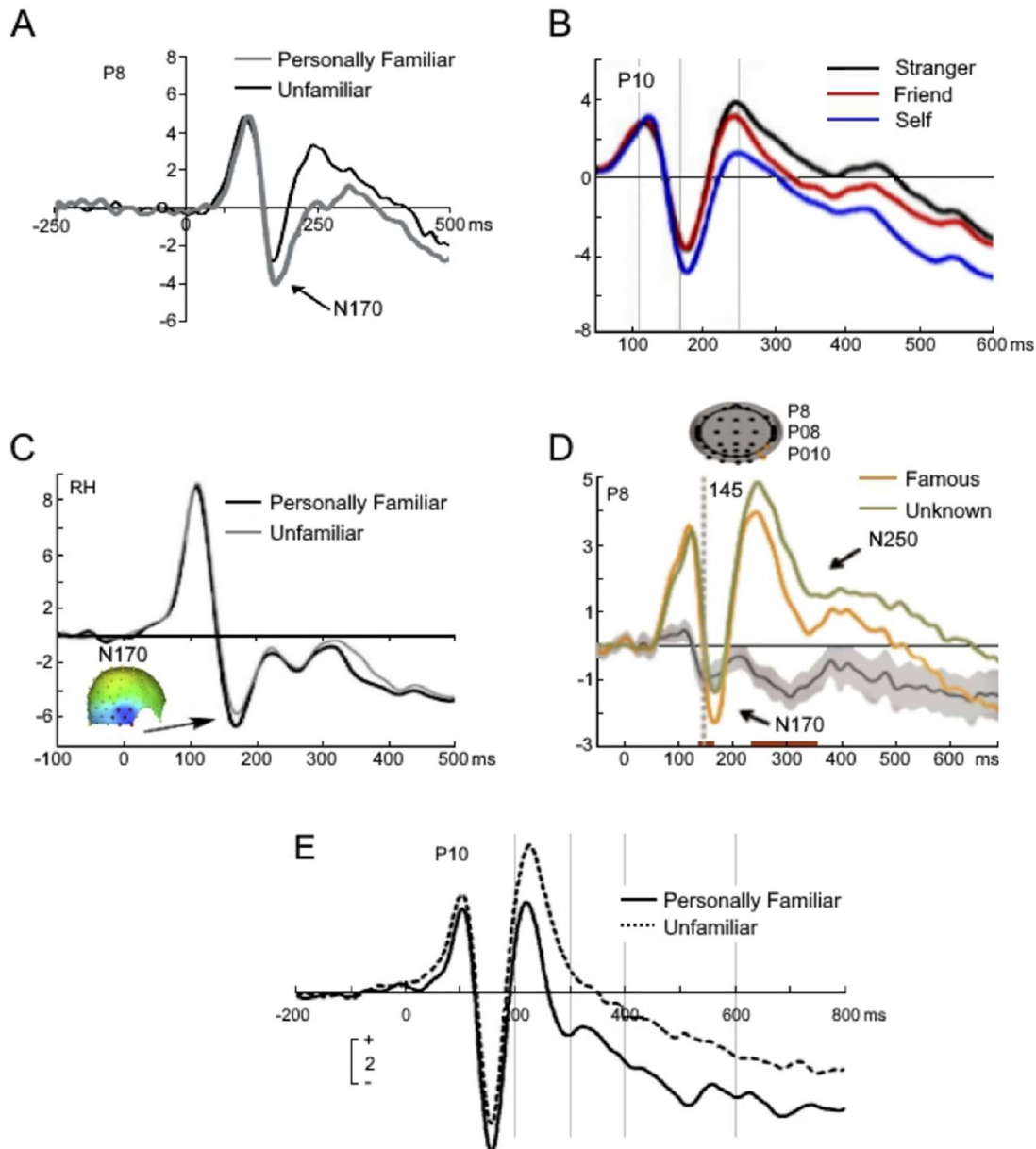


Fig. 2. Grand average ERP waveforms elicited by familiar (famous, personally familiar, and own faces) and unfamiliar faces at right occipito-temporal electrodes. Figures adapted from the studies of A) Caharel et al. (2006), B) Keyes et al., (2010), C) Caharel et al., (2011), (D) Barragan-Jason et al. (2015) and (E) Wiese et al. (2019b). The N170 amplitude is larger for familiar than for unfamiliar faces and this difference occurs at its peak (i.e., at around 170 ms), that is to say after the face-selectivity effect emerging at the onset of the N170 (i.e., 120-130 ms).

Table 1. List of studies that reported a larger N170 amplitude for familiar than unfamiliar faces.

Authors	Year	N (controls) (mean age)	Task	Familiar face types	Number of faces per familiarity level	Number of repetitions for each face	Reference electrode used for analyses
Caharel et al.	2002	11 (24.5)	Passive view	Own face/ Famous	1	100	Common average
Herzmann et al.	2004	16 (20.9)	Familiarity judgment (priming)	Personally familiar (lecturing staff of the University)/ Famous	15 Personally familiar/ 15 Famous /30 Unfamiliar	6	Common average
Caharel et al.	2005	14 (23)	Task 1: Familiarity judgment/ Task 2: Expression judgment	Own face/ Personally Familiar (mother)/ Famous`	1 Own and Personally familiar/ 20 Famous and Unfamiliar	100/ 5	Common average
Mnatsakanian and Tarkka	2005	13 (nr)	Face and Pattern (dots) tasks	Personally familiar	nr	nr	Common average
Caharel et al.	2006	20 (24)	Familiarity judgment	Personally familiar (family members and friends)	10	10	Common average
Kloth et al. - MEG	2006	12 (24.8)	Familiarity judgment	Personally familiar (students and lecturers)/ Famous	66 Personally Familiar/ 66 Famous /132 Unfamiliar	2	–
Caharel et al.	2007	18 (36.3)	Familiarity judgment	Own face, Personally familiar (University professors)	1 Own and Personally familiar/ 2 Unfamiliar	50/ 25	Common average
Zeman et al.	2007	12 (21)	Target / (no face) decision	Own face/	1 Own/ 1	70 Own/ 70	Linked

				Experimentally learned (Joe or Jane)	Learned / 10 Unfamiliar	Learned/ 7 Unfamiliar	earlobes
Dobel et al. - MEG	2008	7 (39)	Familiarity judgment	Famous	66	2	—
Wild-Wall et al.	2008	Task 1: 16 (24.6)/ Task 2: 20 (25.0)	Task 1: Expression judgment/ Task 2: Familiarity judgment	Personally familiar (staff members of the University)	14	Task 1: 12/ Task 2: 6	Common average
Harris and Aguirre - MEG	2008	14 (18-35)	Target (flower) detection	Famous	40	2	—
Keyes et al.	2010	19 (23.4)	Repetition detection	Own face/ Personally familiar (friends)	1	80	CMS/DRL
Leleu et al.	2010	15 (23)	Switching between Familiarity and Expression judgments	Famous	20	16	Common average
Caharel et al.	2011	20 (17.9)	Same-different identity matching (adaptation)	Personally familiar (students)	23	3	Common average
Geng et al.	2012	15 (23.1)	Fixation change detection in supraliminally or subliminally condition	Own face/ Famous	1	nr	Common average
Caharel et al.	2014	22 (23)	Go/no-go familiarity judgment	Personally familiar (students)	26	8	Common average
Alonso-Prieto et al.	2015	10 (28.1)	Pleasant or unpleasant face judgment	Famous	5	40	Common average
Barragan-Jason et al.	2015	28 (24)	Go/no-go familiarity judgment	Famous	270	0	Common average
MacKenzie and Donaldson	2016	Exp 1: 20 (21)/ Exp 2: 24 (22)	Familiar judgment with greyscale/cropped faces (exp1) or color/ native	Famous	Exp 1: ~ 50/ Exp 2: ~ 100	1	Common average

Podvigina and Prokopenya	2019	26 (19–35)	background (exp2) Familiarity judgment of words or faces	Famous	80	1	Linked-earlobes
Wiese et al.	2019b	Exp 1: 18 (21.7)/ Exp 2: 18 (20.6)	Letter string and butterfly detection with high (exp 1) or low (exp 2) resource demands	Personally familiar (close friends)	1	100	Common average

(“nr” for “not reported”)

Table 2. List of studies that failed to report a N170 difference in amplitude between familiar and unfamiliar faces.

Authors	Year	N (controls) (mean age)	Task	Familiar face types	Number of faces per familiarity level	Number of repetitions for each face	Reference electrode used for analyses
Rossion et al.	1999	9 (19-26)	Task 1: Gender discrimination/ Task 2: Familiarity judgment	Experimentally learned	20 Learned/ 40 Unfamiliar	6 Learned/ 3 Unfamiliar	Common average
Bentin and Deouell	2000	Task 1: 14 (nr)/ Task 2: 24 (nr)	Task 1: to count butterflies/ Task 2: to count famous politicians	Famous	60	0	Tip of the nose
Eimer	2000a	15 (24.9)	Task 1: target (hands) detection/ Task 2: target (digit) detection or repetition detection	Famous	50	4	Tip of the nose
Eimer	2000b	24 (27)	Task 1: target (hands) detection/ Task 2: target (digits) detection or repetition detection	Famous	50	6	Tip of the nose
Schweinberger et al.	2002a	12 (21.2)	Familiarity judgment (priming)	Famous	90	0	Common average

Schweinberger et al.	2002b	18 (22.7)	Familiarity judgment (priming)	Famous	90	0	Common average
Henson et al.	2003	18 (23)	Task 1: left–right symmetry judgment/ Task 2: gender categorization	Famous	64	0	Mastoids
Engst et al. *	2006	16 (25.6)	Familiarity judgment (priming)	Famous	64	1	Common average
Sui et al.	2006	18 (24.7)	Head orientation judgment	Own face/ Personally familiar (classmates or roommates)	1	160	Mastoids
Tanaka et al.	2006	24 (20.79)	Target (Joe face) decision	Own face/ Experimentally learned (Joe or Jane)	1	70	Common average
Anaki et al.	2007	24 (25)	Task 1: Target (flower) detection/ Task 2: Familiarity judgment	Famous	90	0	Tip of the nose
Ewbank et al. - MEG	2008	18 (23)	Target (red dot) detection task (adaptation)	Famous	13	208	–
Miyakoshi et al.	2008	16 (20.4)	Familiarity judgment	Own face/ Famous	1	50	Common average
Kaufmann et al.	2009	24 (22.9)	Familiarity judgment (priming)	Experimentally learned	70 Learned/ 140 Unfamiliar	4 Learned/ 0 Unfamiliar	Common average
Dörr et al. *	2011	16 (26.4)	Familiarity judgment (priming)	Famous	116	1	Common average
Gosling and Eimer	2011	16 (27.3)	Familiarity judgment	Famous	80	4	Linked-earlobes
Pierce et al.	2011	Task 1: 12 (27.25)/ Task 2: 24 (nr)	Task 1: Target (Joe or his dog) decision/ Exp 2: Target (Joe or his car) decision	Own face/ Experimentally learned (Joe or Jane)	1 Own/ 1 Learned/ 4 Unfamiliar	70	Task 1: Linked-earlobes / Task 2: Common average

Schulz et al.	2012	31 (22.9)	Two-choice (learned or not learned) task (3 distinctiveness conditions)	Experimentally learned	30	3	Common average
Andrews et al.	2016	19 (21.95)	Target (butterfly) detection	Famous/ Experimentally learned	2 Famous / 6 Learned	nr	Common average
Alzueta et al.	2019	25 (22.7)	Familiarity judgment	Own face/ Personally familiar (friends)	1	150	Common average
Wiese et al. *	2019a	Exp 1: 20 (20.7)/ Exp 3: 18 (19.9)	Target (butterfly) detection	Exp 1: Highly personally familiar (relatives) and in Exp 3: less personally familiar (lecturer) and Famous	Exp 1: 2/ Exp 3: 1	Exp 1: 80/ Exp 3: 50	Common average

("nr" for "not reported"; * studies showing trends towards significance)

Table 3. List of studies that reported a smaller N170 amplitude for familiar than unfamiliar faces.

Authors	Year	N (controls) (mean age)	Task	Familiar face types	Number of faces per familiarity level	Number of repetitions for each face	Reference electrode used for analyses
Jemel et al.	2003	13 (25)	Familiarity judgment (priming)	Famous (Mooney faces)	150	0	Common average
Marzi and Viggiano	2007	9 (29.75)	Familiarity judgment	Famous	90	0	Mastoids
Huang et al.	2017	15 (18–26)	Familiarity judgment	Famous	16	18	Common average

What conclusions can be drawn from this brief survey?

First, although a familiarity effect on the N170 appears too small and inconsistent across studies to be of any use as an electrophysiological marker of face familiarity in applied research, too many studies, from various research groups, report a significant effect to still keep claiming that sensitivity to long-term familiarity does not emerge during the time-window of the N170 but only at later time points (see Fig. 2). A key element supporting this conclusion is the direction of the effect: if the modulation of the N170 by face familiarity was only due to EEG noise fluctuations, there would be no reason to expect a consistent direction of this amplitude difference across studies, i.e. in the form of *larger* amplitude for familiar faces (i.e., familiar > unfamiliar: 21/24 studies; 87,5%; considering only the studies showing a significant difference: 46.7% vs. 6.7%, $X^2 = 18.19$, $p < .001$). Importantly, since ERP studies typically focus on multiple components, there is also no reason to think that only those with positive face familiarity N170 effects are published, artificially increasing the proportion of positive results identified in the present review. If anything, as discussed below, the opposite bias might be present because researchers typically expect effects of face familiarity to emerge on later ERP components, so that effects of face familiarity on the N170 are not always well reported and evaluated (e.g., Herzmann et al., 2004; Wiese et al., 2009a).

Second, given the wide variety of paradigms and the lack of methodological information reported in some studies, it is, unfortunately, almost impossible to identify clear factors (e.g., expectations/task, number of images, image repetition, time-windows selected for analysis, etc.) explaining the presence or absence of a familiarity effect on the N170 (Table 1). This is also a major reason why a systematic meta-analysis on this issue is currently impossible. For instance, the nature of the task (explicit vs. implicit familiarity judgment) does not seem to explain the divergence of results across the studies. Indeed, an explicit task was used in 13 of the 21 studies that reported a N170 face familiarity effect (62%, Table 1) and in 12 of 21 studies (57%, Table 2) which failed to report this effect ($X^2 = .106$, $p = .74$). Also, about the same proportion of studies that showed (15/21; 71%) or did not show (12/21 = 57%) an effect, used the recommended (Joyce and Rossion, 2005) common average reference ($X^2 = .87$, $p = .35$), suggesting that this factor is not directly relevant. Moreover, the same number of studies that showed (7/21; 33%) or did not show (7/21, 33%) a familiarity effect used a number of repetitions of each face identity greater than 40. Yet, interestingly, the level of familiarity, in particular the *personal familiarity* with the faces used as stimuli, seems to play an important role. First, the majority (14/21; 67%) of studies using pictures of personally familiar faces report a larger N170 to familiar than unfamiliar faces (e.g., Caharel et al., 2002; Herzmann et al., 2004; Caharel et al., 2005; Mnatsakanian and Tarkka, 2005; Caharel et al., 2006; Kloth et al., 2006; Caharel et al., 2007; Zeman et al., 2007; Wild-Wall et al., 2008; Keyes et al., 2010; Caharel et al., 2011; Geng et al., 2012;

Caharel et al., 2014; Wiese et al., 2019b; Table 1), with only 6 studies (29%) that did not report such effect (67% vs. 29%, $X^2 = 5.93$, $p = .015$). Moreover, all of the six ERP studies that did not report any N170 modulation for personally familiar faces used a single face identity (often participants' own face) repeated dozens of times (Sui et al., 2006; Tanaka et al., 2006; Miyakoshi et al., 2008; Pierce et al., 2011; Alzueta et al., 2019; Wiese et al., 2019a) (Table 2). Most recently, Wiese et al. (2019a) contrasted pictures of two personally (highly) familiar face identities to two unfamiliar face identities, but with variable pictures for both of them. In the main (#1) experiment of that study, the N170 was larger in amplitude for personally familiar faces but the difference did not reach significance ($p = .07$; supplemental material of Wiese et al., 2019a). However, a careful look at the results of this study strongly suggests in fact an effect of familiarity on the N170 (bottom waveforms on Fig. 2a of Wiese et al., 2019a). Interestingly, while the interaction with the factor block – for stimulus repetition – was not reported by the authors, the waveforms of the last two blocks at least clearly show a larger N170 amplitude for familiar faces (see also Fig. 2a of Wiese et al., 2019a). This is consistent with a subsequent study of these authors reporting significant face familiarity effect on the N170 (Wiese et al., 2019b; see Fig. 2), and suggesting overall that the N170 is genuinely larger in amplitude for pictures of personally familiar faces than unfamiliar faces, even if this effect is not reported or emphasized in the published studies.

Why is the N170 familiarity effect found more often for pictures of personally familiar faces than famous or familiarized faces? On the one hand, personally familiar faces are encountered much more regularly and are learned in more natural and varied visual conditions than famous faces. They may be automatically associated with more, and more diverse, semantic and affective traits, making their neural representations more “robust”, facilitating detection, recognition of identity and social cues, and activation of person knowledge (Ramon and Gobbin, 2018). On the other hand, it is also likely that participants of a given study diverge greatly in their knowledge of celebrities, and that their level of familiarity for various famous faces also varies substantially, potentially blurring any N170 effect of long-term familiarity for famous faces. Another factor could be that participants are familiar with the specific pictures of the personally familiar faces used in an experiment but not with those of famous faces, potentially boosting the effects observed for the former. However, this may be an issue for famous faces too, which are often presented under well-known ‘iconic’ views (Carbon, 2008).

Third, the N170 is a relatively early response originating from high-level visual areas of the human brain, and is therefore certainly more sensitive than later components (e.g., N250) to physical aspects of stimuli. Hence, any imbalance between the physical aspects of image sets compared in a given study is likely to affect more a difference at the level of the N170 than at following components, potentially blurring an early effect of face familiarity.

Unfortunately, physical aspects of familiar and unfamiliar face sets are rarely if ever described and controlled in the published studies. However, across studies, consistent effects of long-term personal face familiarity on the N170 are unlikely to reflect image-based effects because, contrary to sets of famous faces used, personally familiar faces differ for every participant of a given study.

Fourth, while face-selectivity effects (i.e., differences between faces and other visual stimuli) emerge generally at the *onset* of the N170 time window (i.e., 120-130 ms, see Rossion and Jacques, 2008), positive face familiarity effects are rather observed on the *peak* of the component (at around 170 ms) (Fig. 2), i.e. indicating a delay of at least 40-50 ms between the two types of responses. This indicates that recognizing a stimulus as a face temporally precedes the recognition of its familiarity as an individual, but that the two functions nevertheless largely overlap in time, within the N170 time window. To our knowledge, a relationship between these two functions, in terms of EEG signal, across individuals, has not been established and could be further investigated in future studies. Moreover, interestingly, effects of familiarity appear to emerge at the same time as the (immediate) face identity repetition effect for unfamiliar faces (i.e., also at the peak of the N170), this latter effect being observed across substantial changes of size and head orientation but not stimulus inversion (i.e., ruling out an effect merely due to low-level visual cues; Jacques et al., 2007; Caharel et al., 2009; Caharel et al., 2015).

Fifth, a familiarity effect on the N170 does not mean that all that the process of attributing familiarity to a face stimulus is *completed* at this level, but only that enough evidence has been accumulated by the visual system to elicit an early detectable (i.e., significant) response on scalp EEG. In contrast, a much larger and consistent prolonged face familiarity recognition response from 200 ms onset has been described in numerous studies (i.e., on a N250 component; e.g., Schweinberger et al., 2002a; Schweinberger et al., 2002b; Herzmann et al., 2004; Tanaka et al., 2006; Pierce et al., 2011; Wiese et al., 2019a; Wiese et al., 2019b) and may better serve this purpose. In the same vein, a face familiarity effect does not mean that access to the unique familiar *identity* of the face has been completed at this level (after all, how often do we recognize that a face is familiar without being able to identify it, let alone recall its name?). However, recognizing (i.e., providing a selective reproducible response to) a face as being familiar implies that it is at least differentiated at the individual level from unfamiliar faces. That is, the distinction between a familiar and an unfamiliar face requires access to representations of specific individuals derived from past experience.

Theoretical implications and future directions

Following this brief synthesis, a number of outstanding questions or implications can also be raised for future studies. For instance, since it is well established that increased

N170 amplitude depends on the subjective experience of a face, i.e. perceptual awareness (Srebro, 1985; Caharel et al., 2013; Navajas et al., 2013; Churches et al., 2014; see Rossion, 2014 for review), does this also apply to the familiarity effect observed as early as this component? In other words, is the familiarity effect (typically an amplitude increase) of the N170 associated with awareness of perceiving a familiar face or could it be elicited in the absence of conscious recollection (i.e., a form of covert familiar face recognition; Bruyer et al., 1983; De Haan et al., 1991)?

Most importantly, a genuine effect of familiarity on the N170, i.e. starting at an earlier level than expected, appears to challenge standard (hierarchical) functional models of human face recognition (Bruce and Young, 1986; Calder and Young, 2005; Young and Bruce, 2011). Indeed, according to this standard model, the N170 has been associated with a “structural encoding stage” (e.g., Bentin et al., 1996; Bentin and Deouell, 2000; Eimer, 2000a; Eimer, 2000b; Eimer, 2011). That is, a visuo-perceptual processing stage at which the idiosyncratic characteristics of the face are extracted, thought to occur before and independently of the activation of representations of faces stored in memory. Later ERP components, such as the N250 or the N400, would then reflect the association of this perceptual representation to representations of faces stored in memory and access to specific semantic information (i.e., familiar faces) (Bentin and Deouel, 2000; Eimer, 2000a; Eimer, 2000b; Schweinberger et al., 2002a; Schweinberger et al., 2002b; Tanaka et al., 2006; Pierce et al., 2011; Saavedra et al., 2012; Towler et al., 2012; Olivares et al., 2018).

In light of the present review, this standard functional model may still hold, but the structural encoding stage for faces may already be affected by previous experience with specific facial identities and thus not be purely based on physical features of the stimulus (e.g., in a “face-space” representation; Valentine et al., 2016). This would be compatible with the well-documented observations that familiar faces are matched much better according to their identity across different viewing conditions than unfamiliar faces (e.g., Bruce, 1982; Jenkins et al., 2011), although this effect could also well be due to the rich associations of familiar faces with semantic, affective and even verbal information (Bruce, 1982; Schwartz and Yovel, 2016; Rossion, 2018). In any case, an adjustment/revision of the two-stage (perceptual/mnesic) standard functional model of human face recognition and this association with successive ERP components would be required.

Alternatively, this distinction between two independent processing stages, as well as their respective association with consecutive ERP components, may have to be more fundamentally revised. According to an alternative theoretical framework, there would not be “perceptual stage” preceding recognition, perception being rather defined as the subjective experience that arises from recognition (Rossion and Retter, 2020). Recognition of faces occurs when (low-level, topographically organized, unconscious) sensory inputs match

representations of faces in memory (i.e., populations of neurons in the human ventral-occipito-temporal cortex that have been selected to respond to specific inputs across different viewing conditions). According to this latter view, rather than reflecting two subsequent stages with two levels of facial representations, the successive effects observed in EEG would merely reflect accumulation of sensory evidence within the same neuro-functional system. That is, within the same selective populations of neurons in the ventral-occipito-temporal cortex, there is sufficient accumulation of evidence to significantly distinguish between faces and nonface categories (i.e., generic face recognition) precociously (i.e., at the N170 onset, at about 120-130 ms, Rossion and Jacques, 2008), with additional evidence required for the finer-grained distinction between familiar and unfamiliar face identities (i.e., face identity recognition and familiarity effects beginning at the N170 peak, at around 160-170 ms). The familiarity effect starting at about the N170 peak latency would simply reflect the onset of a prolonged single continuous process of (long-term) face familiarity, which would be expressed prominently during the N250 time-window, i.e. until about 400 ms. The richer the representation of familiar faces, as for instance in the case of personally familiar faces, the earlier and larger the differential neural response signaling familiarity.

This alternative theoretical account is certainly more parsimonious because it does not require two copies/representations of face identities (i.e., a perceptual one, derived from the input, and a representation stored in memory) (Rossion and Retter, 2020). It also agrees with the lack of clear-cut division between apperceptive and associative forms of prosopagnosia (Farah, 1990/2004), and the lack of reliable differences between neural sources of the N170 and N250, both thought to originate mainly from the (right) ventral occipito-temporal cortex (Schweinberger et al., 2002b; Kaufmann et al., 2009; Rossion and Jacques, 2011; Olivares et al., 2018). Finally, it also incorporates the well documented effects of short-lagged immediate unfamiliar face repetition also starting on the N170 peak (Rossion and Jacques, 2011 for review) and extending until about the 200-400 ms time-window, into an integrated theoretical framework.

Evaluating this proposal with human electrophysiological recordings certainly requires going beyond description of ERP components as stages of processing and focus on differential waveforms between conditions (with confidence intervals), avoiding the problem of a subjective and often suboptimal selection of time-windows of interest (e.g., 140-180 ms) for data analysis. In recent years, human EEG studies with face stimuli have been increasingly performed using a fast periodic mode of visual stimulation, generating high signal-to-noise ratio (SNR) responses in the frequency-domain exactly at the stimulation frequency rate (“steady-state visual evoked potentials” or “frequency-tagging”, see Norcia et al., 2015 for review). This type of approach holds significant advantages in terms of

sensitivity and objectivity, and the signal can be compared for familiar and unfamiliar faces presented during different fast periodic trains of images (Collins and al., 2018). Most interestingly, pictures of familiar faces can be periodically (e.g., 1.2 Hz) inserted in rapid (6 Hz) periodic trains of unfamiliar faces (Zimmermann and al., 2019). The common response to familiar and unfamiliar faces can therefore be selectively projected to the general stimulation frequency (6 Hz), allowing to focus on their differential response expressed at the slower familiar face stimulation frequency (Zimmermann et al., 2019; Campbell et al., 2020; Yan et al., 2020). These studies have generally concentrated on frequency-domain EEG responses, reporting robust differences between familiar and unfamiliar face identities over the occipito-temporal cortex in individual participants (Zimmermann et al., 2019; Campbell et al., 2020; Yan et al., 2020). Yet, since time-domain analyses of such effects can also be performed, providing that adequate stimulation parameters are used (see Retter and Rossion, 2016; Rossion et al., 2020), they should be able to reveal robust differential waveforms between familiar and unfamiliar faces emerging at around 170 ms as sustained effects rather than separate components reflecting different functional “stages” (see Yan and Rossion, 2020).

Finally, while recordings of face-selective responses inside the human brain have been described for decades with intracranial recordings (Allison and al., 1994; Halgren and al., 1994), there has been a surge of such studies in recent years, with recordings performed inside brain regions typically defined as face-selective in fMRI such as the lateral section of the (right) middle fusiform gyrus (Jacques et al., 2016; Jonas et al., 2016). The present overview suggests that effects of long-term familiarity of the faces – especially for personally familiar faces - should be observed at the level of intracranial responses, most likely within face-selective occipito-temporal regions, emerging significantly before 200 ms.

In conclusion, our brief survey of two decades of ERP studies in which pictures of long-term familiar and unfamiliar faces were compared indicates that a significant effect linked to familiarity with specific facial identities emerges earlier in the human brain than generally thought, i.e. between 150-200 ms in occipito-temporal brain regions. This effect briefly follows the emergence of reliable face-selectivity at the N170 onset, but occurs at the same time as the earliest high-level effects of immediate unfamiliar face identity repetition. These observations challenge standard neurocognitive models with a clear-cut distinction between perceptual and memory stages in human face recognition.

Acknowledgments

The authors would like to thank John Towler, Holger Wiese and an anonymous reviewer for their helpful comments on a previous version of this manuscript.

References

- Allison T, Ginter H, McCarthy G, Nobre AC, Puce A, Luby M, Spencer DD (1994) Face recognition in human extrastriate cortex. *J Neurophysiol* 71:821–825.
- Alonso-Prieto E, Pancaroglu R, Dalrymple KA, Handy T, Barton JJS, Oruc I (2015) Temporal dynamics of the face familiarity effect: bootstrap analysis of single-subject event-related potential data. *Cogn Neuropsychol* 32:266–282.
- Alzueta E, Melcón M, Poch C, Capilla A (2019) Is your own face more than a highly familiar face? *Biol Psychol* 142:100–107.
- Anaki D, Zion-golumbic E, Bentin S (2007) Electrophysiological neural mechanisms for detection, configural analysis and recognition of faces. *Neuroimage* 37:1407–1416.
- Andrews S, Burton AM, Schweinberger SR, Wiese H (2017) Event-related potentials reveal the development of stable face representations from natural variability. *Q J Exp Psychol*, 70:1620–1632.
- Barragan-Jason G, Cauchoix M, Barbeau EJ (2015) The neural speed of familiar face recognition. *Neuropsychologia* 75:390–401.
- Barrett SE, Rugg MD, Perrett DI (1988) Event-related potentials and the matching of familiar and unfamiliar faces. *Neuropsychologia* 26:105–117.
- Batty M, Meaux E, Wittemeyer K, Rogé B, Taylor MJ (2011) Early processing of emotional faces in children with autism: An event-related potential study. *J. Exp. Child Psychol.* 109:430–444.
- Bentin S, Allison T, Puce A, Perez, E (1996) Electrophysiological studies of face perception in humans. *J Cogn Neurosci* 8, 551–565.
- Bentin S, Deouell LY (2000) Structural encoding and identification in face processing: ERP evidence for separate mechanisms. *Cogn Neuropsychol* 17:35–54.
- Bortolon C, Capdevielle D, Raffard S (2015) Face recognition in schizophrenia disorder: A comprehensive review of behavioral, neuroimaging and neurophysiological studies. *Neurosci Biobehav Rev*, 53:79–107.
- Bötzel K, Grüsser OJ (1989) Electric brain potentials-evoked by pictures of faces and non-faces – A search for face-specific eeg-potentials. *Exp Brain Res* 77:349–360.
- Bruce V (1982) Changing faces: visual and non-visual coding processes in face recognition. *Brit J Psychol* 73:105–116.
- Bruce V, Young AW (1986) Understanding face recognition. *Brit J Psychol* 77:305–327.
- Bruyer R, Laterre C, Seron X, Feyereisen P, Strypstein E, Pierrard E, Rectem D (1983) A case of prosopagnosia with some preserved covert remembrance of familiar faces. *Brain Cogn* 2:257–284.

- Caharel S, Bernard C, Thibaut F, Haouzir S, Di Maggio-Clozel C, Allio G, Fouldrin G, Petit M, et al. (2007) The effects of familiarity and emotional expression on face processing examined by ERPs in patients with schizophrenia. *Schizophr Res* 95:186–196.
- Caharel S, Courtaÿ N, Bernard C, Lalonde R, Rebaï M (2005) Familiarity and emotional expression influence an early stage of face processing: an electrophysiological study. *Brain Cogn* 59:96–100.
- Caharel S, Fiori N, Bernard C, Lalonde R, Rebaï M (2006) The effects of inversion and eye displacements of familiar and unknown faces on early and late-stage ERPs. *Int J Psychophysiol* 62:141–151.
- Caharel S, Jacques C, d'Arripe O, Ramon M, Rossion B (2011) Early electrophysiological correlates of adaptation to personally familiar and unfamiliar faces across viewpoint changes. *Brain Res* 1387:85–98.
- Caharel S, Leleu A, Bernard C, Viggiano MP, Lalonde R, Rebaï M (2013) Early holistic face-like processing of Arcimboldo paintings in the right occipito-temporal cortex: Evidence from the N170 ERP component. *Int J Psychophysiol* 90:157–164.
- Caharel S, Poiroux S, Bernard C, Thibaut F, Lalonde R, Rebaï M (2002) ERPs associated with familiarity and degree of familiarity during face recognition. *Int J Neurosci* 112:1499–1512.
- Caharel S, Ramon M, Rossion B (2014) Face Familiarity Decisions Take 200 msec in the Human Brain: Electrophysiological Evidence from a Go / No-go Speeded Task. *J Cogn Neurosci* 26:81–95.
- Calder AJ, Young AW (2005) Understanding the recognition of facial identity and facial expression. *Nat Rev Neurosci* 6:641–651.
- Campbell A, Louw R, Michniak E, Tanaka JW (2020) Identity-specific neural responses to three categories of face familiarity (own, friend, stranger) using fast periodic visual stimulation. *Neuropsychologia* 141 :107415.
- Carbon CC (2008) Famous faces as icons. The illusion of being an expert in the recognition of famous faces. *Perception* 37:801–806.
- Churches O, Nicholls M, Thiessen M, Kohler M, Keage H (2014) Emoticons in mind: An event-related potential study. *Soc Neurosci* 9:196–202.
- Collins E, Robinson AK, Behrmann M (2018) Distinct neural processes for the perception of familiar versus unfamiliar faces along the visual hierarchy revealed by EEG. *Neuroimage* 181:120–131.
- De Haan EH, Young AW, Newcombe F (1991) Covert and overt recognition in prosopagnosia. *Brain* 114:2575–2591.
- Dobel C, Putsche C, Zwitterlood P, Junghöfer M (2008) Early Left-Hemispheric Dysfunction of Face Processing in Congenital Prosopagnosia: An MEG Study. *PLoS One* 3:e2326.

- Dobs K, Isik L, Pantazis D, Kanwisher N (2019) How face perception unfolds over time. *Nat Commun* 10:1258.
- Dörr P, Herzmann G, Sommer W (2011) Multiple contributions to priming effects for familiar faces: Analyses with backward masking and event-related potentials. *Br J Psychol* 102:765–782.
- Eimer M (2000a) Effects of face inversion on the structural encoding and recognition of faces: Evidence from event-related brain potentials. *Cogn Brain Res* 10:145–158.
- Eimer M (2000b) Event-related brain potentials distinguish processing stages involved in face perception and recognition. *Clin Neurophysiol* 111:694–705.
- Eimer M (2011) The face-sensitive N170 component of the event-related brain potential. In: *The Oxford handbook of face perception* (Calder AJ, Rhodes G, Johnson MH, Haxby JV, eds), pp. 329–366. Oxford, UK: Oxford University Press.
- Engst FM, Martín-loeches M, Sommer W (2006) Memory systems for structural and semantic knowledge of faces and buildings. *Brain Res* 11124:70–80.
- Ewbank MP, Smith WAP, Hancock E R, Andrews TJ (2008) The M170 Reflects a Viewpoint-Dependent Representation for Both Familiar and Unfamiliar Faces. *Cereb Cortex* 18:364–370.
- Farah MJ (1990/2004) *Visual agnosia: Disorders of object recognition and what they tell us about normal vision*. Cambridge, MIT Press.
- Feuerriegel D, Churches O, Hofmann J, Keage HAD (2015) The N170 and face perception in psychiatric and neurological disorders: A systematic review. *Clin Neurophysiol* 126:1141–1158.
- Ganis G, Smith D, Schendan HE (2012) The N170, not the P1, indexes the earliest time for categorical perception of faces, regardless of interstimulus variance. *Neuroimage* 62:1563-1574.
- Geng H, Zhang S, Li Q, Tao R, Xu S (2012) Dissociations of subliminal and supraliminal self-face from other-face processing: Behavioral and ERP evidence. *Neuropsychologia* 50:2933–2942.
- Gosling A, Eimer M (2011) An event-related brain potential study of explicit face recognition. *Neuropsychologia* 49:2736–2745.
- Grasso DJ, Moser JS, Dozier M, Simons R (2009) ERP correlates of attention allocation in mothers processing faces of their children. *Biol Psychol* 81:95–102.
- Halgren E, Baudena P, Heit G, Clarke JM, Marinkovic K, Clarke M (1994) Spatio-temporal stages in face and word processing. I. Depth-recorded potentials in the human occipital, temporal and parietal lobes. *J Physiol* 88:1–50.
- Harris AM, Aguirre GK (2008) The effects of parts, wholes, and familiarity on face-selective responses in MEG. *J Vis* 8:4.

- Henson R N, Ganel T, Otten L J, Quayle A, Rugg MD (2003) Electrophysiological and haemodynamic correlates of face perception, recognition, and priming. *Cereb Cortex* 13:793–805.
- Herzmann G, Schweinberger SR, Sommer W (2004) What's special about personally familiar faces? A multimodal approach, *Psychophysiology* 41:688–701.
- Huang W, Wu X, Hu L, Wang L, Ding Y, Qu Z (2017) Revisiting the earliest electrophysiological correlate of familiar face recognition. *Int J Psychophysiol* 120:42–53.
- Itier RJ, Taylor MJ (2002) Inversion and contrast polarity reversal affect both encoding and recognition processes of unfamiliar faces: a repetition study using ERPs. *Neuroimage* 15, 353-372.
- Jacques C, Witthoft N, Weiner K S, Foster BL, Rangarajan V, Hermes D, Miller KJ, Parvizi J, et al. (2016) Corresponding ECoG and fMRI category-selective signals in human ventral temporal cortex. *Neuropsychologia* 83:14–28.
- Jeffreys DA (1989) A face-responsive potential recorded from the human scalp. *Exp Brain Res* 78:193–202.
- Jeffreys DA (1996) Evoked potential studies of face and object processing. *Vis Cogn* 3:1-38.
- Jemel B, Pisani M, Calabria M, Crommelinck M, Bruyer R (2003) Is the N170 for faces cognitively penetrable? Evidence from repetition priming of Mooney faces of familiar and unfamiliar persons. *Cogn Brain Res* 17:431–446.
- Jenkins R, White D, Van Montfort X, Burton AM (2011) Variability in photos of the same face. *Cognition* 121: 313–323.
- Jonas J, Jacques C, Liu-Shuang J, Brissart H, Colnat-coulbois S, Maillard L, Rossion B (2016) A face-selective ventral occipito-temporal map of the human brain with intracerebral potentials. *Proc Natl Acad Sci USA*, 113:E4088–E4097.
- Joyce C, Rossion B (2005) The face-sensitive N170 and VPP components manifest the same brain processes: The effect of reference electrode site. *Clin Neurophysiol* 116:2613–2631.
- Kaufmann M, Schweinberger SR, Burton A M (2009) N250 ERP Correlates of the Acquisition of Face Representations across Different Images. *J Cogn Neurosci* 21:625–641.
- Keyes H, Brady N, Reilly, RB, Foxe JJ (2010) Brain and Cognition My face or yours? Event-related potential correlates of self-face processing. *Brain Cogn* 72:244–254.
- Kloth N, Dobel C, Schweinberger SR, Zwitserlood P, Bölte J, Junghöfer M (2006) Effects of personal familiarity on early neuromagnetic correlates of face perception. *Eur J Neurosci* 24:3317–3321.
- Leleu A, Caharel S, Carré J, Montalan B, Snoussi M, Vom Hofe A, Charvin H, Lalonde R, et al. (2010) Perceptual interactions between visual processing of facial familiarity and

- emotional expression: an event-related potentials study during task-switching. *Neurosci Lett* 482:106–111.
- Mackenzie G, Donaldson DI (2016) Elements of person knowledge: Episodic recollection helps us to identify people but not to recognize their faces. *Neuropsychologia* 93:218–228.
- Marzi T, Viggiano MP (2007) Interplay between familiarity and orientation in face processing: An ERP study. *Int J Psychophysiol* 65:182–192.
- McCleery A, Lee J, Joshi, A, Wynn JK, Helleman GS, Green MF (2015) Meta-Analysis of Face Processing Event-Related Potentials in Schizophrenia. *Biol Psychiatry* 77:116–126.
- Miyakoshi M, Kanayama N, Nomura M, Lidaka T, Ohira H (2008) ERP study of viewpoint-independence in familiar-face recognition. *Int J Psychophysiol* 69:119–126.
- Mnatsakanian EV, Tarkka IM (2005) Familiar and nonfamiliar face-specific ERP components. *Int Congr Ser* 1278:135–138.
- Navajas J, Ahmadi M, Quian Quiroga R (2013) Uncovering the mechanisms of conscious face perception: a single-trial study of the N170 responses. *J Neurosci* 33:1337–1343.
- Norcia AM, Appelbaum LG, Ales JM, Cottureau BR, Rossion B (2015) The steady-state visual evoked potential in vision research: A review. *J Vis* 15:1–46.
- Obayashi C, Nakashima T, Onitsuka T, Maekawa T, Hirano Y, Hirano S, Oribe N, Kaneko K et al. (2009) Decreased spatial frequency sensitivities for processing faces in male patients with chronic schizophrenia. *Clin Neurophysiol* 120:1525–1533.
- Olivares EI, Lage-Castellanos A, Bobes MA, Iglesias J (2018) Source Reconstruction of Brain Potentials Using Bayesian Model Averaging to Analyze Face Intra-Domain vs. Face-Occupation Cross-Domain Processing. *Front Integr Neurosci* 12:12.
- Pierce LJ, Scott LS, Boddington S, Droucker D, Curran T, Tanaka JW (2011) The N250 brain potential to personally familiar and newly learned faces and objects. *Front Hum Neurosci* 5:111.
- Podvigina DN, Prokopenya VK (2019) Role of Familiarity in Recognizing Faces and Words: an EEG Study. *Med Technol Med*, 11:76-82.
- Ramon M, Gobbi MI (2018) Familiarity matters: A review on prioritized processing of personally familiar faces. *Vis Cogn* 26:179–195.
- Retter TL, Rossion B (2016) Uncovering the neural magnitude and spatio-temporal dynamics of natural image categorization in a fast visual stream. *Neuropsychologia* 91:9–28.
- Rossion B (2014) Understanding face perception by means of human electrophysiology. *Trends Cogn Sci* 18:310–318.
- Rossion B (2018) Humans are visual experts at unfamiliar face recognition. *Trends Cogn Sci* 22, 471-472.

- Rossion B, Caharel S (2011) ERP evidence for the speed of face categorization in the human brain: Disentangling the contribution of low-level visual cues from face perception. *Vis Res* 51:1297–1311.
- Rossion B, Campanella S, Gomez CM, Delinte A, Debatisse D, Liard L, Dubois S, Bruyer R, et al. (1999) Task modulation of brain activity related to familiar and unfamiliar face processing: an ERP study. *Clin Neurophysiol* 110:449–462.
- Rossion B, Gauthier I, Tarr MJ, Despland P, Bruyer R, Linotte S, Crommelinck M (2000) The N170 occipito-temporal component is delayed and enhanced to inverted faces but not to inverted objects: An electrophysiological account of face-specific processes in the human brain. *Neuroreport* 11:69–74.
- Rossion B, Jacques C (2008) Does physical interstimulus variance account for early electrophysiological face sensitive responses in the human brain? Ten lessons on the N170. *Neuroimage* 39:1959–1979.
- Rossion B, Jacques C (2011) The N170: Understanding the time-course of face perception in the human brain. In: *The Oxford handbook of ERP components* (Luck S, Kappenman E, eds), pp 115–141. Berlin: Oxford University Press.
- Rossion B, Retter TL (2020) Face Perception. In: *The Cognitive Neurosciences, Sixth Edition* (Poeppel D, Gazzaniga MS, Mangun G, eds), pp.129-139. The MIT Press.
- Rossion B, Retter TL, Liu-Shuang J (2020) Understanding human individuation of unfamiliar faces with oddball fast periodic visual stimulation and electroencephalography. *Eur J Neurosci*. doi:10.1111/ejn.14865
- Rousselet GA, Husk JS, Bennett PJ, Sekuler AB (2008) Time course and robustness of ERP object and face differences. *J Vis* 8:3.
- Saavedra C, Iglesias J, Olivares EI (2012) Event-related potentials elicited by face identity processing in elderly adults with cognitive impairment. *Exp Aging Res* 38:220–245,
- Schulz C, Kaufmann JM, Kurt A, Schweinberger SR (2012) Faces forming traces: Neurophysiological correlates of learning naturally distinctive and caricatured faces. *Neuroimage* 63:491–500.
- Schwartz L, Yovel G (2016) The roles of perceptual and conceptual information in face recognition. *J Exp Psychol Gen* 145:1493-1511.
- Schweinberger SR, Neumann MF (2016) Repetition effects in human ERPs to faces. *Cortex* 80:141–153.
- Schweinberger SR, Pickering EC, Burton AM, Kaufmann JM (2002a) Human brain potential correlates of repetition priming in face and name recognition. *Neuropsychologia* 40:2057–2073.

- Schweinberger SR, Pickering EC, Jentzsch I, Burton AM, Kaufmann M (2002b) Event-related brain potential evidence for a response of inferior temporal cortex to familiar face repetitions. *Cogn Brain Res* 14:398–409.
- Seeck M, Michel CM, Mainwaring N, Cosgrove R, Blume H, Ives J, Landis T, Schomer DL (1997) Evidence for rapid face recognition from human scalp and intracranial electrodes. *Neuroreport* 8:2749–2754.
- Srebro R (1985) Localization of cortical activity associated with visual recognition in humans. *J Physiol* 360:247-259.
- Sui J, Zhu Y, Han S (2006) Self-face recognition in attended and unattended conditions: an event-related brain potential study. *Neuroreport* 17:423–427.
- Tanaka JW, Curran, T, Porterfield AL, Collins D (2006) Activation of Preexisting and Acquired Face Representations: The N250 Event-related Potential as an Index of Face Familiarity. *J Cogn Neurosci* 18:1488–1497.
- Towler J, Gosling A, Duchaine B, Eimer M (2012) The face-sensitive N170 component in developmental prosopagnosia. *Neuropsychologia* 50:3588-3599.
- Valentine T, Lewis MB, Hills PJ (2016) Face space: A unifying concept in face recognition research. *Q J Exp Psychol* 69:1996–2019.
- Wiese H, Ingram BT, Elley ML, Tüttenberg SC, Burton AM, Young AW (2019b) Later but not early stages of familiar face recognition depend strongly on attentional resources: Evidence from event-related brain potentials. *Cortex* 120:147–158.
- Wiese H, Tüttenberg SC, Ingram BT, Chan CYX, Gurbuz Z, Burton AM, Young AW (2019a) A Robust Neural Index of High Face Familiarity. *Psychol Sci* 30:261–272.
- Wild-Wall N, Dimigen O, Sommer W (2008) Interaction of facial expressions and familiarity: ERP evidence. *Biol Psychol* 77:138–149.
- Yan X, Rossion B (2020) A robust neural familiar face recognition response in a dynamic (periodic) stream of unfamiliar faces. *Cortex* 132: 281-295.
- Yan X, Zimmermann F, Rossion B (2020) An implicit neural familiar face identity recognition response across widely variable natural views in the human brain. *Cogn Neurosci* 21:1-14.
- Young AW, Bruce V (2011) Understanding person perception. *Br J Psychol* 102:959–974.
- Zeman PM, Till BC, Livingston NJ, Tanaka JW, Driessen PF (2007) Independent component analysis and clustering improve signal-to-noise ratio for statistical analysis of event-related potentials. *Clin Neurophysiol* 118:2591–2604.
- Zimmermann FGS, Yan X, Rossion B (2019) An objective, sensitive and ecologically valid neural measure of rapid human individual face recognition. *R Soc Open Sci* 6:181904.