



HAL
open science

Angiotensin-Nepriylsin Inhibition and Renal Outcomes in Heart Failure With Preserved Ejection Fraction

Finnian R Mc Causland, Martin P Lefkowitz, Brian Claggett, Nagesh S Anavekar, Michele Senni, Mauro Gori, Pardeep S Jhund, Martina M Mcgrath, Milton Packer, Victor Shi, et al.

► **To cite this version:**

Finnian R Mc Causland, Martin P Lefkowitz, Brian Claggett, Nagesh S Anavekar, Michele Senni, et al.. Angiotensin-Nepriylsin Inhibition and Renal Outcomes in Heart Failure With Preserved Ejection Fraction. *Circulation*, 2020, 142 (13), pp.1236-1245. 10.1161/CIRCULATIONAHA.120.047643 . hal-03720119

HAL Id: hal-03720119

<https://hal.univ-lorraine.fr/hal-03720119>

Submitted on 11 Jul 2022

HAL is a multi-disciplinary open access archive for the deposit and dissemination of scientific research documents, whether they are published or not. The documents may come from teaching and research institutions in France or abroad, or from public or private research centers.

L'archive ouverte pluridisciplinaire **HAL**, est destinée au dépôt et à la diffusion de documents scientifiques de niveau recherche, publiés ou non, émanant des établissements d'enseignement et de recherche français ou étrangers, des laboratoires publics ou privés.

Angiotensin-Nepriylsin Inhibition and Renal Outcomes in Heart Failure with Preserved Ejection Fraction

Finnian R. Mc Causland, MBBCh, MMSc^{1,2} Martin P. Lefkowitz, MD³ Brian Claggett, PhD^{2,4} Nagesh S. Anavekar, MD⁵ Michele Senni, MD⁶ Mauro Gori, MD⁶ Pardeep S. Jhund, MBBCh, PhD⁷ Martina M. McGrath, MBBCh^{1,2} Milton Packer, MD⁸ Victor Shi, MD³ Dirk J. Van Veldhuisen, MD⁹ Faiez Zannad, MD^{10,2} Josep Comin-Colet, MD, PhD^{11,12} Marc A. Pfeffer, MD, PhD^{2,4} John J. V. McMurray, MD⁷ Scott D. Solomon, MD^{2,4}

¹ Renal Division, Department of Medicine, Brigham and Women's Hospital, Boston, MA, USA

² Harvard Medical School, Boston, MA, USA

³ Novartis Pharmaceuticals, East Hanover, NJ, USA

⁴ Cardiovascular Division, Department of Medicine, Brigham and Women's Hospital, Boston, MA, USA

⁵ Faculty of Medicine, Dentistry and Health Sciences, University of Melbourne, Australia

⁶ Cardiology Division, Cardiovascular Department, Azienda Ospedaliera Papa Giovanni XXIII Hospital, Bergamo, Italy

⁷ British Heart Foundation Cardiovascular Research Centre, University of Glasgow, Glasgow, UK

⁸ Baylor Heart and Vascular Institute, Baylor University Medical Center, Dallas, TX, USA

⁹ Department of Cardiology, University Medical Center Groningen, University of Groningen, Groningen, The Netherlands

¹⁰ Université de Lorraine, Inserm CIC1433, CHRU de Nancy, France

¹¹ Department of Cardiology, Bellvitge University Hospital and Bellvitge Biomedical Research Institute (IDIBELL), L'Hospitalet de Llobregat, Barcelona, Spain

¹² Department of Clinical Sciences, School of Medicine, University of Barcelona, Barcelona, Spain

Abstract Word Count: 214

Body Word Count: 2,861

Date: July 10th, 2020

Running Title: Sacubitril/Valsartan and Renal Outcomes in HFpEF

Correspondence to:

Finnian R. Mc Causland, MBBCh, MMSc

Renal Division, Brigham and Women's Hospital, Boston, MA, 02115

Email: fmccausland@bwh.harvard.edu

ABSTRACT

Background

In patients with heart failure, chronic kidney disease (CKD) is common and associated with a higher risk of renal events than in patients without CKD. We assessed the renal effects of angiotensin/neprilysin inhibition in patients with heart failure and preserved ejection fraction (HFpEF) enrolled in PARAGON-HF.

Methods

In this randomized, double-blind, event-driven trial, we assigned 4,822 patients with HFpEF to receive sacubitril/valsartan (n=2419) or valsartan (n=2403). Herein we present the results of the pre-specified renal composite outcome (time to first occurrence of either: $\geq 50\%$ reduction in eGFR, end-stage renal disease, or death from renal causes), the individual components of this composite, and the influence of therapy on eGFR slope.

Results

At randomization, eGFR was 63 ± 19 ml/min/1.73m². At study closure, the composite renal outcome occurred in 33 patients (1.4%) assigned to sacubitril/valsartan and 64 patients (2.7%) assigned to valsartan (hazard ratio [HR], 0.50; 95%CI, 0.33 to 0.77; P=0.001). The treatment effect on the composite renal endpoint did not differ according to the baseline eGFR (<60 vs ≥ 60 ml/min/1.73 m² (P-interaction=0.92). The decline in eGFR was less for

sacubitril/valsartan compared with valsartan (-1.8 [95%CI, -2.0 to -1.6] vs. -2.4 [95%CI, -2.6 to -2.2] ml/min/1.73m²/year).

Conclusions

In patients with HFpEF, sacubitril/valsartan reduced the risk of renal events, and slowed decline in eGFR, compared with valsartan.

Trial Registration

(Funded by Novartis; PARAGON-HF ClinicalTrials.gov number, NCT01920711.)

Keywords: Heart Failure, Preserved Ejection Fraction, Chronic Kidney Disease, Renal Outcomes

NON-STANDARD ABBREVIATIONS AND ACRONYMS

ACE	Angiotensin converting enzyme inhibitor
ARB	Angiotensin receptor blocker
BNP	B-type natriuretic peptide
CKD	Chronic Kidney Disease
CI	Confidence Interval
CV	Cardiovascular
eGFR	Estimated glomerular filtration rate
ESRD	End-stage renal disease
HARP-III	Heart and Renal Protection III trial
HF	Heart failure
HFpEF	Heart failure with preserved ejection fraction
HFrEF	Heart failure with reduced ejection fraction
HR	Hazard ratio
NTproBNP	N-terminal pr-B-type natriuretic peptide
OVERTURE	Omapatrilat Versus Enalapril Randomized Trial of in Reducing Events
PARADIGM-HF	Prospective Comparison of ARNI With ACEI to Determine Impact on Global Mortality and Morbidity in Heart Failure)

PARAGON-HF (Prospective Comparison of ARNI With ARB Global

Outcomes in HF With Preserved Ejection Fraction

RAS Renin-angiotensin system

SBP Systolic blood pressure

SD Standard deviation

T2DM Type 2 diabetes mellitus

CLINICAL PERSPECTIVE

What Is New?

- In this prespecified analysis of patients with heart failure with preserved ejection fraction enrolled in PARAGON-HF, sacubitril/valsartan reduced the occurrence of the renal composite outcome ($\geq 50\%$ reduction in eGFR, end-stage renal disease, or death from renal causes) compared with valsartan.
- Sacubitril/valsartan attenuated the decline in estimated glomerular filtration rate over the course of the study, independent of changes in blood pressure, compared with valsartan.

What Are the Clinical Implications?

- Therapeutic benefits of sacubitril/valsartan with respect to renal outcomes are observed among patients with heart failure with preserved ejection fraction and appear to be similar across baseline kidney function.
- Sacubitril/valsartan may represent an important therapeutic option to slow kidney function decline in patients with heart failure with preserved ejection fraction.

INTRODUCTION

Chronic kidney disease (CKD) is a common comorbid condition in patients with heart failure, and is associated with a higher risk for adverse cardiovascular (CV) events, compared to heart failure patients without CKD.¹⁻³ Heart failure with preserved ejection fraction (HFpEF) accounts for approximately half of heart failure cases, and includes features of diastolic dysfunction, vascular stiffness and abnormalities in systolic function.^{4,5} Inhibitors of the renin-angiotensin system (RAS) are known to reduce mortality in patients with heart failure with reduced ejection fraction (HFrEF),⁶⁻⁹ and to slow the progression of proteinuric CKD in patients with diabetes.¹⁰⁻¹² However, in patients with HFpEF, RAS inhibition has not demonstrated conclusive benefit in reducing mortality or adverse renal outcomes.¹³⁻¹⁶

The addition of neprilysin inhibition to RAS blockade offers an alternative approach to target abnormal neurohormonal signaling in heart failure by augmenting the endogenous vasoactive peptide system, including the biologically active natriuretic peptides, while simultaneously blocking the renin-angiotensin system. In patients with heart failure and reduced ejection fraction (HFrEF) enrolled in the PARADIGM-HF trial, sacubitril/valsartan has been shown to reduce the risk of CV death and HF hospitalization,¹⁷ and to result in a slower rate of estimated glomerular filtration rate (eGFR) decline,¹⁸ compared with enalapril. Similar patterns of benefit in slowing eGFR decline were noted in a phase 2 trial of sacubitril/valsartan in HFpEF, compared with valsartan.¹⁹

The PARAGON-HF trial compared sacubitril/valsartan with valsartan in patients with HFpEF, and demonstrated a 13% reduction (rate ratio 0.87; 95%CI 0.75 to 1.01) in total heart failure hospitalizations and CV death.²⁰ Here, we report the results of the prespecified secondary renal outcome (composite of either a $\geq 50\%$ reduction in eGFR relative to baseline, development of end-stage renal disease, or death from renal causes), the effect of study treatment on change in eGFR, and the effect of treatment on renal outcomes according to baseline renal function.

METHODS

Data Sharing

The sponsor of this trial is committed to sharing access to patient-level data and supporting clinical documents from eligible studies with qualified external researchers. These requests are reviewed and approved by an independent review panel based on scientific merit. All data provided is anonymized to respect the privacy of patients who have participated in the trial in line with applicable laws and regulations. The trial data availability is according to the criteria and process described.²¹

Trial design and oversight

The design and methods of the PARAGON-HF trial have been described previously.^{20,22} Local ethics committees approved the trial and all patients provided written, informed consent. The executive committee designed and oversaw the conduct of the trial and data analysis in collaboration with the sponsor, Novartis. A full copy of the trial protocol is available with this article. The trial was reviewed by an independent data and safety monitoring committee. Data were collected, managed, and analyzed by the sponsor according to a predefined statistical analysis plan. An independent academic statistician replicated the primary analyses. The first author wrote the first draft of the present manuscript. All authors submitted revisions and made the collective decision to submit the present manuscript for publication.

Study Patients

Briefly, the PARAGON-HF study population included patients aged ≥ 50 years, left ventricular ejection fraction $\geq 45\%$ by echocardiography with features of structural heart disease defined by left ventricular hypertrophy and/or left atrial enlargement, on maintenance diuretic therapy and with elevated plasma B-type natriuretic peptide (BNP) or N-terminal pro-B-type natriuretic peptide (NTproBNP) concentrations. Notable exclusion criteria included: symptomatic hypotension (or a systolic blood pressure < 110 mm Hg at screening or < 100 mm Hg at random treatment assignment); an eGFR of < 30 ml/min/1.73 m² at screening or < 25 ml/min/1.73 m² at randomization, or a decrease $> 35\%$ in eGFR between screening and randomization; and hyperkalemia (serum potassium > 5.2 mmol/l at screening or > 5.4 mmol/l at random treatment assignment).

Definition of Primary and Secondary Outcomes

The primary outcome of the PARAGON-HF trial was a composite of CV death and total (first and recurrent) heart failure hospitalizations. The composite renal outcome was a prespecified key secondary outcome, defined as either: 1) $\geq 50\%$ decline in eGFR relative to baseline; 2) development of end-stage renal disease; or 3) death due to renal causes (See supplementary Table I for renal endpoint definitions).

Post Hoc Assessments of Renal Outcomes

We conducted post-hoc analyses to examine for the effect of sacubitril/valsartan (versus valsartan) on the individual components of the renal composite endpoint. In addition, we examined for a differential effect of sacubitril/valsartan on the renal outcome, according to the baseline eGFR (eGFR at randomization, modeled as a continuous variable). A prespecified exploratory outcome was to examine if sacubitril/valsartan resulted in a slower rate of decline in eGFR, compared with valsartan. For these analyses, the eGFR was calculated using the Chronic Kidney Disease Epidemiology Collaboration equation, with creatinine traceable to isotope dilution mass spectrometry, using data from randomization, at 4, 16, 32, and 48 weeks, and every 24 weeks thereafter until week 192.

Renal Safety and Laboratory Assessments

We conducted safety analyses to examine for a differential effect of sacubitril/valsartan for the incidence of at least one adverse event, at least one serious adverse event, study drug discontinuation for adverse and serious adverse events, hyperkalemia, elevations in serum creatinine, and symptomatic hypotension, according to the baseline eGFR (<60 versus ≥ 60 ml/min/1.73 m²).

Statistical Analyses

We report data as mean (+/-SD) when normally distributed, as median (25th-75th percentile) when non-normally distributed, and as frequencies and percentages for categorical variables. We used the Student t-test, Wilcoxon Rank Sum, or chi-square tests to determine differences between baseline variables for patients

according to the baseline (eGFR <60 versus ≥ 60 ml/min/1.73 m², respectively), according to data distribution.

We used an intention-to-treat approach to perform analyses in patients who had received at least one dose of study drug. For the renal endpoints we used Cox proportional hazard models to estimate hazard ratios (HRs) with 95% CIs, stratified according to geographic region. We tested for interactions between the treatment effect of sacubitril/valsartan and baseline eGFR, age, sex, and ejection fraction on the renal outcomes. Data from patients who did not have an event were censored on the last day they were known to be free of the outcome.

We assessed for changes in eGFR over time with repeated measures mixed effect models, using available data from randomization, at 4, 16, 32, and 48 weeks, and every 24 weeks thereafter, until week 192. We adjusted for treatment assignment, trial visit, and the interaction between treatment assignment and visit. Intercepts and slopes over time were allowed to vary randomly between patients by inclusion of patient and time as random effects. As sacubitril/valsartan resulted in a lower mean blood pressure compared with valsartan, in exploratory models, we adjusted for time-updated measurements of systolic blood pressure.

All analyses were performed at the nominal alpha level of 0.05 without correction for multiple hypothesis testing. No formal power calculations were performed *a priori* for renal secondary or exploratory outcomes. Statistical analyses were performed using STATA (version 14.0, Stata Corp., College Station, Texas).

RESULTS

Patients

A total of 4822 patients were randomized, with 4796 included in the efficacy analysis (26 patients were excluded as they were enrolled at a site that was closed for violations of Good Clinical Practice; Figure 1). At baseline, the mean eGFR was 63 ± 19 ml/min/1.73 m² and 47% of patients had an eGFR < 60 ml/min/1.73 m². The patients were categorized according to the eGFR at baseline (<60 versus ≥ 60 ml/min/1.73m²) and had similar characteristics according to treatment assignment within these sub-groups (Table 1). Overall, at baseline, patients with eGFR < 60 ml/min/1.73 m² (mean 47 ± 8 ml/min/1.73 m²) were more likely to be older, female, have a history of diabetes, atrial fibrillation or prior stroke, to be taking a diuretic, and have marginally higher ejection fraction and NTproBNP; they were less likely to be taking an ACEi or ARB, and had lower systolic blood pressure (Supplementary Table II). The mean eGFR was 77 ± 14 ml/min/1.73 m² in those with baseline eGFR ≥ 60 ml/min/1.73 m².

Prespecified Renal Outcomes

The composite renal outcome occurred in 33 of the 2407 patients (1.4%) in the sacubitril/valsartan group and 64 of the 2389 patients (2.7%) in the valsartan group, with a risk reduction of 50% (HR 0.50, 95%CI 0.33-0.77; P=0.001; Fig. 2). The 4-year risk of experiencing the renal composite outcome was 2.1% in the sacubitril/valsartan group and 4.1% in the valsartan group, corresponding to a number needed to treat of 51 (28, 220) over this time period.

The treatment effect from an on-treatment analysis were similar to the intention-to-treat approach (HR 0.45; 95%CI 0.28 to 0.74). The treatment effect on the composite renal endpoint did not differ according to the baseline eGFR (<60 vs \geq 60 ml/min/1.73 m²; P-interaction=0.92; Table 2). Furthermore, there was no evidence for effect modification according to age (P-interaction=0.41), sex (P-interaction=0.90), or ejection fraction (P-interaction=0.31).

The overall result from the renal composite outcome was driven by the individual component of \geq 50% reduction in eGFR from baseline, which occurred in 27 of the 2407 patients (1.1%) in the sacubitril/valsartan group and 60 of the 2389 patients (2.5%) of the valsartan group (HR 0.44, 95%CI 0.28-0.69). The development of ESRD occurred in 7 of 2407 patients (0.3%) in the sacubitril/valsartan group and in 12 of 2377 patients (0.5%) in the valsartan group (HR 0.58, 95%CI 0.23-1.47). There were 2 deaths from renal disease, with one occurring in the sacubitril/valsartan group and one in the valsartan group. The treatment effects on the individual components of the renal composite outcome did not differ according to the baseline eGFR (Table 2).

Renal Function over Time

From randomization through the end of study, the mean decline in eGFR was -2.0 (95%CI -2.2 to -1.9) ml/min/1.73 m² per year for the sacubitril/valsartan group, compared with -2.7 (95%CI -2.8 to -2.5) ml/min/1.73 m² per year for the valsartan group, with an adjusted mean difference of 0.6 (95%CI 0.4 to 0.9; P<0.001) ml/min/1.73 m² per year (Fig. 3). Treatment effect estimates were

similar after additional adjustment for changes in systolic blood pressure during the study (adjusted mean difference 0.6 (95%CI 0.3 to 0.8; P<0.001) ml/min/1.73 m² per year.

Safety and Adverse Events

Overall, adverse events requiring study drug discontinuation and serious adverse events, and permanent discontinuation due to renal impairment were more common among those with baseline eGFR < 60 ml/min/1.73 m² (versus eGFR ≥ 60 ml/min/1.73 m²). Patients with baseline eGFR < 60 ml/min/1.73 m² assigned to the sacubitril/valsartan group had more hypotensive events, fewer episodes of elevated serum creatinine above 2 mg/dL, and no difference in the frequency of hyperkalemic events. Patients with baseline eGFR ≥ 60 ml/min/1.73 m² assigned to the sacubitril/valsartan group had fewer episodes of serum creatinine ≥ 2 mg/dl or hyperkalemia ≥6 mmol/L, compared with the valsartan group (Supplementary Table III).

DISCUSSION

Among patients with HFpEF in the PARAGON-HF trial, sacubitril/valsartan resulted in lower rates of the renal composite outcome than valsartan. This result was driven mainly by a lower incidence of $\geq 50\%$ decline in eGFR relative to baseline and was consistent across sub-groups of baseline eGFR (< 60 and ≥ 60 ml/min/1.73m²). Patients in the sacubitril/valsartan group also had a lower overall rate of decline in eGFR, compared with those in the valsartan group.

There have been suggestions of renal benefit with combined angiotensin and neprilysin inhibition in prior studies of patients with heart failure. For example, in the OVERTURE trial there were fewer adverse events of renal impairment with omapatrilat (versus enalapril) in patients with NYHA class II-IV heart failure or LVEF $\leq 30\%$.²³ In the PARADIGM-HF trial, while a significant decrease in the prespecified renal composite endpoint (end-stage renal disease, or decrease in eGFR of $\geq 50\%$, or a decrease of more than 30 ml/min/1.73 m² from randomization to less than 60 ml/min/1.73 m²) was not observed, a post hoc analysis examining the effect of sacubitril/valsartan on the more conventional composite of end-stage renal disease or $\geq 50\%$ decline in eGFR did show a decreased risk (HR 0.63; 95% CI 0.42 – 0.95), while the rate of decline in eGFR was also lower.¹⁸ Overall, these results suggest beneficial renal effects for combined angiotensin/neprilysin inhibition in patients with heart failure across the spectrum of ejection fraction.

The renal benefits we observed in PARAGON-HF and PARADIGM-HF were not observed in the HARP-III trial, a relatively small trial which compared

sacubitril/valsartan with irbesartan in 414 patients with CKD (eGFR 20-60 ml/min/1.73 m²) of various etiologies. HARP-III observed no significant difference between groups in the primary outcome of measured eGFR at 12 months.²⁴ Of note, compared with participants of PARAGON-HF, those in HARP-III tended to be younger, predominantly male, had higher blood pressure, more advanced CKD and higher levels of proteinuria, and a very low prevalence of self-reported heart failure and diuretic use. These differences in patient characteristics, the smaller sample size, the much shorter duration of follow up, and the inclusion of a heterogenous group of CKD etiologies in HARP-III, may explain the discrepant results in renal outcomes between the two studies.

Sacubitril/valsartan lowered systolic blood pressure to a greater extent than valsartan in PARAGON-HF and was associated with a higher frequency of hypotensive events. Despite these differences, the occurrence of adverse renal events was lower with sacubitril/valsartan. Indeed, in additional analyses that adjusted for changes in systolic blood pressure, there still appeared to be benefit for sacubitril/valsartan in terms of a lower rate of decline in eGFR during the course of the study. These findings suggest that the beneficial renal effects are independent of blood pressure lowering.

The activation of several neurohormonal pathways in heart failure, including the renin-angiotensin system and the counter-regulatory natriuretic peptide system, have important consequences for renal hemodynamics. Micropuncture studies in rodent models of heart failure have reported higher glomerular capillary pressures compared with controls, which are lowered with

angiotensin converting enzyme (ACE) blockade.²⁵ Furthermore, omapatrilat (an inhibitor of both ACE and neprilysin) appeared to result in further reduction of intra-glomerular pressure, compared with enalapril.²⁶ However, the clinical relevance of these observations is uncertain, as several post-hoc analyses of randomized trials in heart failure have not found evidence for longer-term preservation of renal function (and potentially even accelerated decline) with the use of RAS inhibitors, versus placebo.²⁷⁻³¹ Similarly, trials of beta-blocker therapy in heart failure have also failed to result in renal benefits,³² suggesting that optimization of cardiac function alone is not enough to attenuate renal function decline in heart failure. While it could be debated if the renal benefit we observed is reflective of less ARB effect with sacubitril/valsartan than single-agent valsartan, pharmacokinetic studies suggest bioequivalence in ARB dosing with the respective sacubitril/valsartan formulation.³³ Furthermore, similar renal benefits were observed in PARADIGM-HF, compared with enalapril, suggesting the renal benefits are not limited to differences in the hemodynamic effects of ARBs. Thus, our present findings suggest that simultaneous inhibition of the renin-angiotensin and neprilysin systems has opposing effects on the determinants of glomerular function. Additionally, it is likely that several non-hemodynamic pathways are also affected by combined angiotensin/neprilysin inhibition, with some evidence suggesting an anti-inflammatory role for neprilysin inhibition (beyond that of RAS inhibitors alone) in terms of reducing biomarkers of renal fibrosis and inflammation.^{34,35}

It is important to view these results in the context of recent therapeutic advances with sodium-glucose cotransporter 2 (SGLT2) inhibitors which have been shown to have long-term renal benefit in patients with T2DM, compared with placebo.³⁶⁻⁴⁰ While the mean difference in eGFR decline in our analyses was 0.7 ml/min/1.73m²/year, compared with 1.5 ml/min/1.73m²/year in CREDENCE, there were major differences in the study design, including the specific recruitment of individuals with CKD (without requirement for HFpEF) and use of placebo-control in CREDENCE,³⁶ as well as different mechanisms of action and blood pressure lowering effects. In contrast to the initial decline in eGFR observed over the first few months of SGLT2 inhibitor therapy compared with placebo, we noted some minor fluctuations in eGFR until the 32-week measurement, perhaps reflective of titration of study medication dosing. Despite this, we still found significant attenuation of eGFR decline for sacubitril/valsartan over the course of follow-up, in both intention-to-treat and on-treatment analyses. Longer term renal outcome data with SGLT2 inhibitors in the specific setting of heart failure is limited to date.⁴¹

There are some limitations to the present analyses. Although the composite renal outcome was a key prespecified secondary outcome of PARAGON-HF, the trial was not primarily powered for analyses of the individual renal components, nor for assessment of differences in eGFR decline. Urine albumin/creatinine ratio was not measured during the course of this study, limiting our ability to compare with PARADIGM-HF where, although CV benefits were maintained, modest increases in microalbuminuria were noted with

sacubitril/valsartan, compared with enalapril. PARAGON-HF excluded patients with more advanced kidney disease (eGFR <30 ml/min/1.73 m²) and had a modest proportion of non-Caucasians, thereby limiting generalizability of our findings to such populations.

In summary, in patients with HFpEF enrolled in the PARAGON-HF trial, treatment with sacubitril/valsartan resulted in fewer adverse renal events and slower decline in eGFR, despite a higher frequency of hypotensive events. Notably, these renal benefits appear to extend across the spectrum of baseline renal function, providing an important therapeutic option to slow renal function decline in patients with heart failure.

Table 1. Characteristics of the Patients at Baseline, According to the Estimated Glomerular Filtration Rate (eGFR) and Randomized Treatment Assignment.*

Characteristic	Patients with eGFR <60 ml/min/1.73m ²		Patients with eGFR ≥60 ml/min/1.73m ²	
	Valsartan (N=1,177)	Sacubitril/Valsartan (N=1,164)	Valsartan (N=1,211)	Sacubitril/Valsartan (N=1,243)
Age, yrs	75.2 ± 7.6	74.9 ± 7.6	70.4 ± 8.8	70.7 ± 8.5
Female, no. (%)	645 (54.8)	675 (58.0)	593 (49.0)	566 (45.5)
Race, no. (%)				
Asian	141 (12.0)	132 (11.3)	168 (13.9)	165 (13.3)
Black	23 (2.0)	23 (2.0)	27 (2.2)	29 (2.3)
Other	40 (3.4)	42 (3.6)	45 (3.7)	53 (4.3)
White	973 (82.7)	967 (83.1)	971 (80.2)	996 (80.1)
Geographic Region, no. (%)				
North America	175 (14.9)	176 (15.1)	96 (7.9)	112 (9.0)
Latin America	87 (7.4)	88 (7.6)	92 (7.6)	103 (8.3)
Western Europe	370 (31.4)	387 (33.2)	320 (26.4)	312 (25.1)
Central Europe	360 (30.6)	349 (30.0)	499 (41.2)	507 (40.8)
Asia-Pacific or other	185 (15.7)	164 (14.1)	204 (16.9)	209 (16.8)
Systolic blood pressure, mmHg	130.0 ± 15.8	129.2 ± 16.1	131.2 ± 14.9	131.7 ± 14.9
Heart rate, beats/min	70.0 ± 12.3	70.7 ± 12.5	70.6 ± 12.1	70.5 ± 12.1
Body-mass index [#]	30.3 ± 5.0	30.4 ± 4.9	30.3 ± 5.2	30.0 ± 4.9
Serum creatinine,	1.3 ± 0.3	1.3 ± 0.3	0.9 ± 0.2	0.9 ± 0.2

mg/dL^s				
Estimated glomerular filtration rate,[%] mL/min/1.73 m²	47 ± 8	47 ± 8	77 ± 15	77 ± 14
Clinical features of heart failure				
Ischemic Cause, no. (%)	403 (34.2)	416 (35.8)	421 (34.8)	483 (38.9)
Left ventricular ejection fraction, %	57.8 ± 7.7	58.2 ± 7.8	57.2 ± 8.2	57.0 ± 7.8
Median NT-proBNP (25th-75th percentile), pg/mL	1025 [522 – 1854]	1060 [556 - 1809]	780 [400 - 1464]	764 [414 - 1407]
NYHA Classification, no. (%)				
I	34 (2.9)	33 (2.8)	30 (2.5)	40 (3.2)
II	892 (75.8)	884 (76.0)	947 (78.2)	982 (79.1)
III	246 (20.9)	244 (21.0)	228 (18.8)	214 (17.2)
IV	5 (0.4)	2 (0.2)	6 (0.5)	6 (0.5)
Medical History, no. (%)				
Hypertension	1128 (95.8)	1118 (96.0)	1151 (95.0)	1186 (95.4)
Diabetes	537 (45.6)	512 (44.0)	478 (39.5)	534 (43.0)
Atrial Fibrillation or flutter	413 (35.3)	405 (34.9)	364 (30.1)	370 (29.8)
Stroke	138 (11.8)	148 (12.7)	104 (8.6)	118 (9.5)

Hospitalization for heart failure	592 (50.3)	549 (47.2%)	579 (47.8)	586 (47.1)
Myocardial infarction	258 (21.9)	265 (22.8%)	264 (21.8)	296 (23.8)
Treatment, no. (%)				
Diuretic at randomization	1142 (97.0)	1121 (96.3)	1148 (94.8)	1173 (94.4)
ACE inhibitor or ARB at screening	1002 (85.1)	983 (84.5)	1063 (87.8)	1091 (87.8)
Mineralocorticoid-receptor antagonist at randomization	317 (26.9)	285 (24.5)	330 (27.3)	307 (24.7)
Beta-blocker at randomization	918 (78.0)	926 (79.6)	980 (80.9)	996 (80.1)

* Plus-minus values are mean +/- SD. There were no significant differences between the study groups except with respect to ischemia as a primary cause of heart failure in patients with eGFR ≥ 60 ml/min/1.73 m² (P=0.04).

The body-mass index is the weight in kilograms divided by the square of the height in meters.

\$ This characteristic was measured at the randomization visit instead of the screening visit.

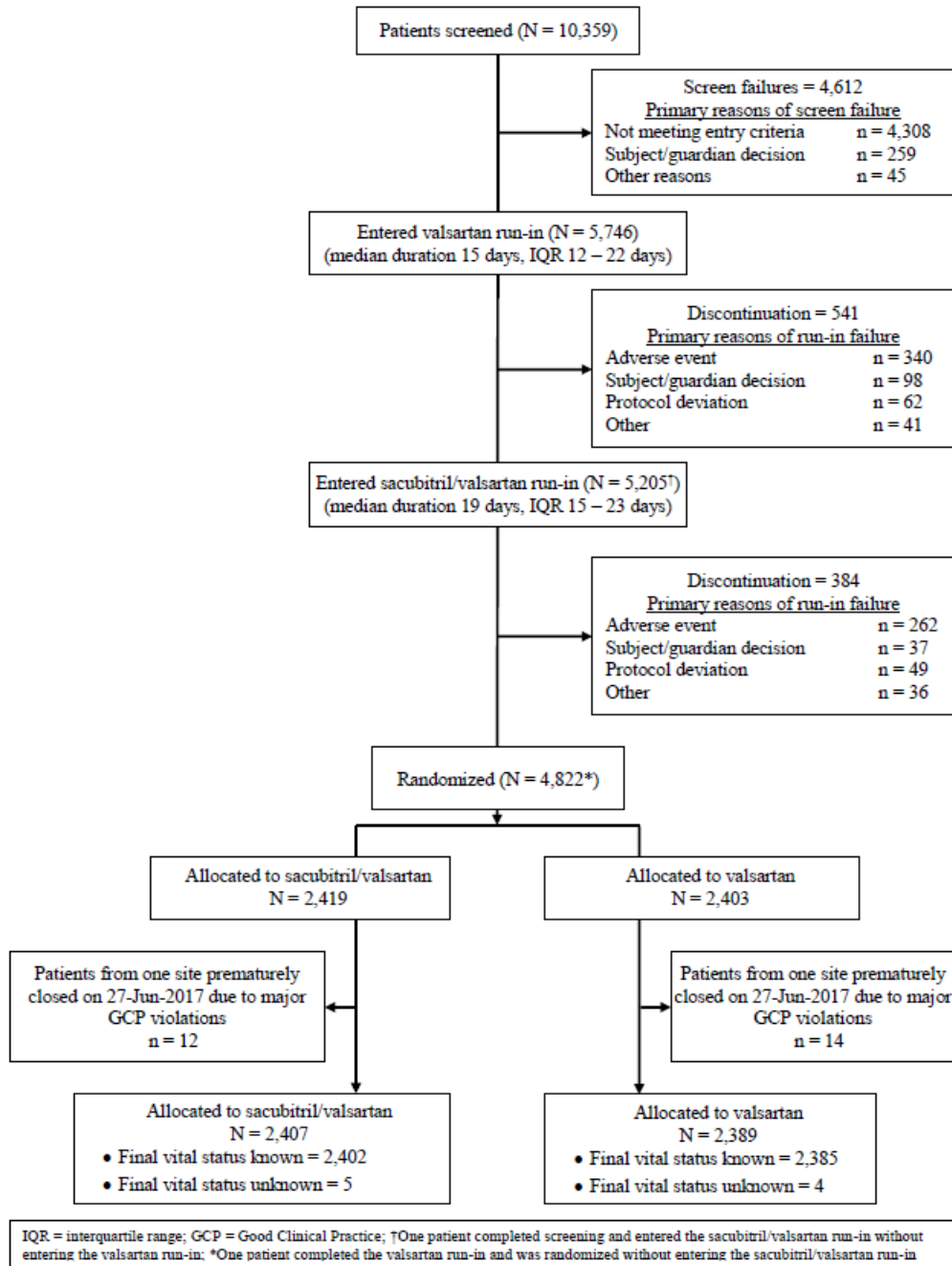
% The GFR at baseline was estimated according to the four-variable Modification of Diet in Renal Disease formula. Data on eGFR at baseline was not available for one patient in the Valsartan group.

NYHA, New York Heart Association; BMI, Body Mass Index; ACE, Angiotensin Converting Enzyme; ARB, Angiotensin Receptor Blocker

Table 2. Renal Outcomes

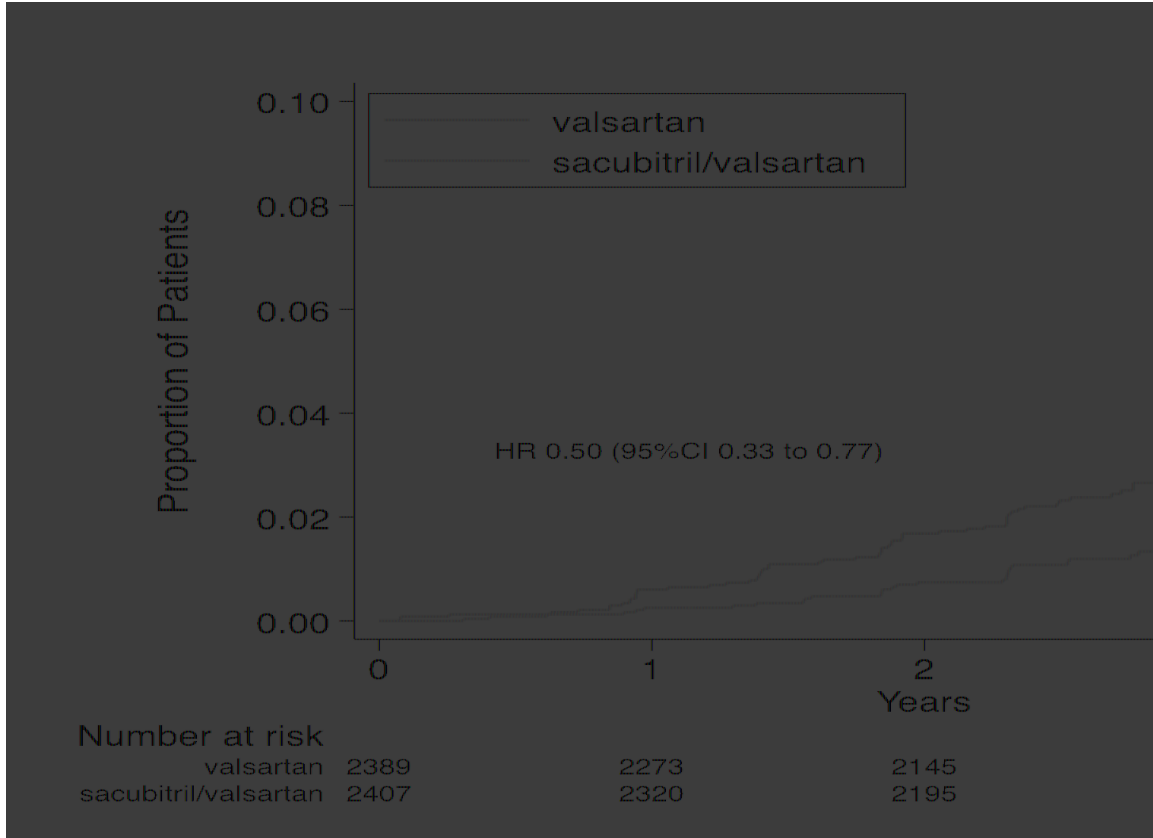
Outcome	Valsartan	Sacubitril/Valsartan	Hazard Ratio (95% CI)
Overall	(n=2389)	(n=2407)	
Renal Composite, no. (%)	64 (2.7)	33 (1.4)	0.50 (0.33-0.77)
>50% decline in eGFR	60 (2.5)	27 (1.1)	0.44 (0.28-0.69)
End-stage renal disease	12 (0.5)	7 (0.3)	0.58 (0.23-1.47)
Death from renal causes	1 (0.04)	1 (0.04)	–
Patients with baseline eGFR < 60 ml/min/1.73m²	(n=1177)	(n=1164)	
Renal Composite, no. (%)	32 (2.7)	16 (1.4)	0.50 (0.28-0.92)
>50% decline in eGFR	28 (2.4)	11 (1.0)	0.39 (0.20-0.79)
End-stage renal disease	12 (1.0)	6 (0.5)	0.51 (0.19-1.35)
Death from renal causes	1 (0.04)	1 (0.04)	–
Patients with baseline eGFR ≥60 ml/min/1.73m²	(n=1211)	(n=1243)	
Renal Composite, no. (%)	32 (2.6)	17 (1.4)	0.51 (0.29-0.93)
>50% decline in eGFR	32 (2.6)	16 (1.3)	0.48 (0.27-0.88)
End-stage renal disease	0 (0.0)	1 (0.1)	–
Death from renal causes	0 (0.0)	0 (0.0)	–

Figure 1. Consort Flow Diagram



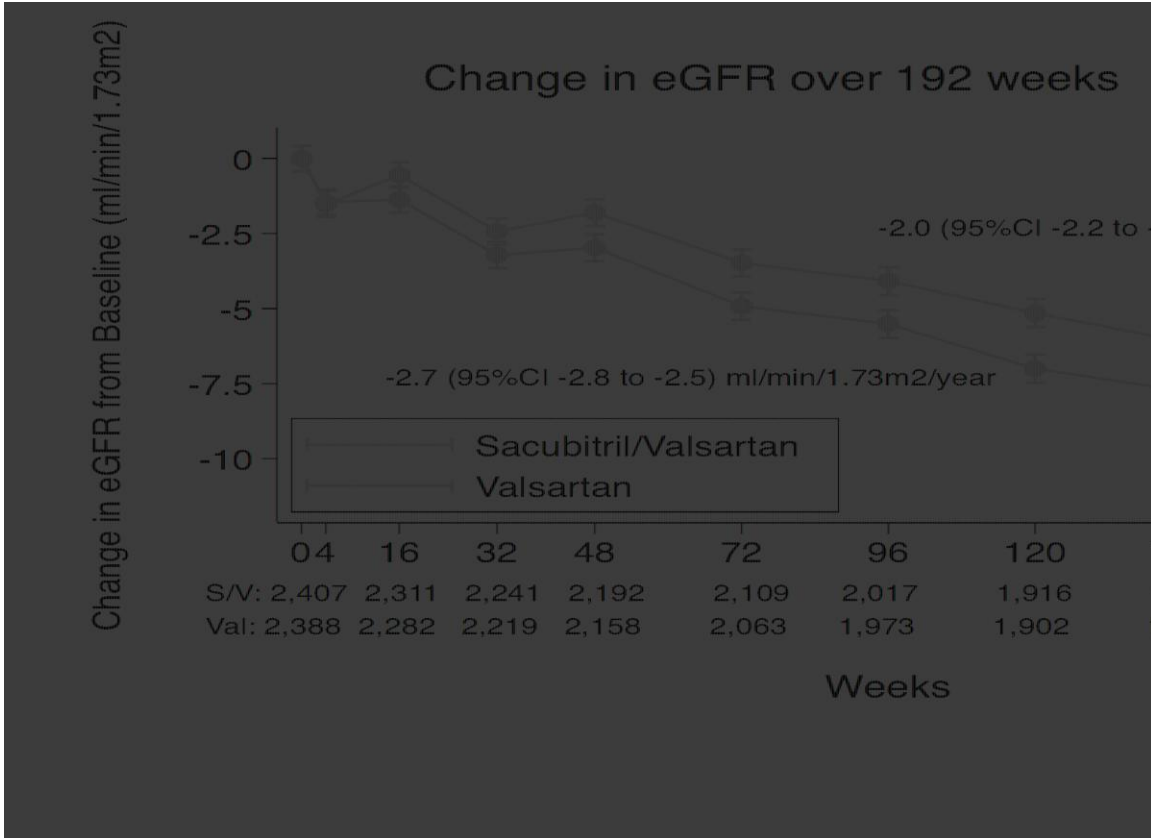
IQR = interquartile range; GCP = Good Clinical Practice; †One patient completed screening and entered the sacubitril/valsartan run-in without entering the valsartan run-in; *One patient completed the valsartan run-in and was randomized without entering the sacubitril/valsartan run-in

Figure 2. Kaplan-Meier Analysis of Renal Outcomes



Shown are estimates of the probability of a first occurrence of a prespecified renal composite outcome of either a $\geq 50\%$ reduction in eGFR relative to baseline, attainment of end-stage renal disease, or death due to renal causes among patients who received at least one dose of either sacubitril/valsartan or valsartan.

Figure 3. Change in renal function over time



Shown are the adjusted means for the estimated glomerular filtration rate (eGFR) over a period of 192 weeks among patients who received at least one dose of either sacubitril/valsartan or valsartan. The I bars indicate 95% confidence intervals. The eGFR was calculated according to the creatinine formula developed by the Chronic Kidney Disease Epidemiology Collaboration study. This panel is based on a mixed-model, repeated measures analysis in patients who received at least one dose of study drug and had a baseline and post-baseline measurement. The number of measurements available at each timepoint per arm are presented below the x-axis.

Sources of Funding

Novartis funded the study.

Disclosures

Dr. Mc Causland is supported by NIDDK grants U01DK096189, R03DK122240, and K23DK102511.

Dr Claggett reports consulting fees from AO Biome, Biogen, Boehringer Ingelheim, Corvia, Gilead, Myokardia, and Novartis.

Dr Packer reports consulting fees from Abbvie, Akcea, Actavis, Amgen, Amarin, AstraZeneca, Boehringer Ingelheim, Cardioentis, Daiichi Sankyo, Johnson & Johnson, Lilly, Novartis, NovoNordisk, ParatusRx, Pfizer, Relypsa, Sanofi, Synthetic Biologics, and Theravance.

Dr Senni reports consulting fees from Novartis, Bayer, Abbott, Merck, Vifor, AstraZeneca, Boehringer Ingelheim.

Dr Gori has received consulting fees from Novartis, Menarini, and Boehringer Ingelheim.

Dr Jhund's employer the University of Glasgow has been remunerated by Novartis for his work on the PARADIGM-HF and PARAGON-HF trials, speaker

and advisory board fees from Novartis. His employer the University of Glasgow has been remunerated by Astrazeneca for his work on the DAPA-HF and DELIVER trials and speakers fees from AstraZeneca; grant from Boehringer Ingelheim.

Drs Shi and Lefkowitz are employees of Novartis Pharmaceuticals Corporation.

Dr Comin-Colet has received unrestricted research grants and consultancy honoraria from Novartis, Bayer, Vifor Pharma, Orion Pharma, AstraZeneca and Boehringer Ingelheim.

Dr Veldhuisen has received board membership fees from Novartis.

Dr Zannad reports steering committee personal fees from Applied Therapeutics, Bayer, Boehringer, Boston Scientific, Novartis, Janssen and CVRx, advisory board personal fees from, AstraZeneca, Vifor Fresenius, Cardior, Cereno pharmaceutical, Merck and Owkin, stock options at G3Pharmaceutical, and being the founder of CardioRenal and CVCT.

Dr Pfeffer reports grants from Novartis and personal fees for consulting from AstraZeneca, CinCor, Corvidia, DalCor, GlaxoSmithKline, Jazz Pharmaceuticals, MyoKardia, Novartis, NovoNordisk, Pharmascience, Sanofi, Servier and Takeda. Dr Pfeffer also owns Stock Options of DalCor.

Dr McMurray reports grants to his institution from Novartis, Bayer, Cardioentis, Amgen, Oxford University, Theracos, Abbvie, DalCor, Pfizer, Merck, AstraZeneca, GSK, BMS, Kings College Hospital.

Dr Solomon reports grants paid to his institution from Alnylam, Amgen, AstraZeneca, Bayer, Bellerophon, BMS, Celladon, Cytokinetics, Gilead, Celladon, Eidos, GSK, Ionis, Lone Star Heart, Mesoblast, MyoKardia, NIH/NHLBI, Novartis, Sanofi Pasteur, and Theracos; and consulting fees from Alnylam, Amgen, AoBiome, AstraZeneca, Bayer, BMS, Cardiac Dimensions, Corvia, Cytokinetics, Daichi-Sankyo; Gilead, GSK, Ironwood, Janssen, Merck, MyoKardia, Novartis, Quantum Genomics, Roche, Takeda, Tenaya, and Theracos.

The other authors report no conflicts.

REFERENCES

1. Damman K, Valente MAE, Voors AA, O'Connor CM, van Veldhuisen DJ, Hillege HL. Renal impairment, worsening renal function, and outcome in patients with heart failure: an updated meta-analysis. *Eur Heart J*. 2014;35:455–469.
2. Hillege HL, Nitsch D, Pfeffer MA, Swedberg K, McMurray JJV, Yusuf S, Granger CB, Michelson EL, Ostergren J, Cornel JH, de Zeeuw D, Pocock S, van Veldhuisen DJ, Candesartan in Heart Failure: Assessment of Reduction in Mortality and Morbidity (CHARM) Investigators. Renal function as a predictor of outcome in a broad spectrum of patients with heart failure. *Circulation*. 2006;113:671–678.
3. Go AS, Yang J, Ackerson LM, Lepper K, Robbins S, Massie BM, Shlipak MG. Hemoglobin level, chronic kidney disease, and the risks of death and hospitalization in adults with chronic heart failure: the Anemia in Chronic Heart Failure: Outcomes and Resource Utilization (ANCHOR) Study. *Circulation*. 2006;113:2713–2723.
4. Tartièrre-Kesri L, Tartièrre J-M, Logeart D, Beauvais F, Cohen Solal A. Increased proximal arterial stiffness and cardiac response with moderate exercise in patients with heart failure and preserved ejection fraction. *J Am Coll Cardiol*. 2012;59:455–461.
5. Tan YT, Wenzelburger F, Lee E, Heatlie G, Leyva F, Patel K, Frenneaux M, Sanderson JE. The pathophysiology of heart failure with normal ejection fraction: exercise echocardiography reveals complex abnormalities of both systolic and diastolic ventricular function involving torsion, untwist, and longitudinal motion. *J Am Coll Cardiol*. 2009;54:36–46.
6. SOLVD Investigators, Yusuf S, Pitt B, Davis CE, Hood WB, Cohn JN. Effect of enalapril on survival in patients with reduced left ventricular ejection fractions and congestive heart failure. *N Engl J Med*. 1991;325:293–302.
7. Pfeffer MA, Braunwald E, Moyé LA, Basta L, Brown EJ, Cuddy TE, Davis BR, Geltman EM, Goldman S, Flaker GC. Effect of captopril on mortality and morbidity in patients with left ventricular dysfunction after myocardial infarction. Results of the survival and ventricular enlargement trial. The SAVE Investigators. *N Engl J Med*. 1992;327:669–677.
8. Køber L, Torp-Pedersen C, Carlsen JE, Bagger H, Eliassen P, Lyngborg K, Videbaek J, Cole DS, Auclert L, Pauly NC. A clinical trial of the angiotensin-converting-enzyme inhibitor trandolapril in patients with left ventricular dysfunction after myocardial infarction. Trandolapril Cardiac Evaluation (TRACE) Study Group. *N Engl J Med*. 1995;333:1670–1676.

9. Pfeffer MA, Swedberg K, Granger CB, Held P, McMurray JJV, Michelson EL, Olofsson B, Ostergren J, Yusuf S, Pocock S, CHARM Investigators and Committees. Effects of candesartan on mortality and morbidity in patients with chronic heart failure: the CHARM-Overall programme. *Lancet Lond Engl.* 2003;362:759–766.
10. Brenner BM, Cooper ME, de Zeeuw D, Keane WF, Mitch WE, Parving HH, Remuzzi G, Snapinn SM, Zhang Z, Shahinfar S, RENAAL Study Investigators. Effects of losartan on renal and cardiovascular outcomes in patients with type 2 diabetes and nephropathy. *N Engl J Med.* 2001;345:861–869.
11. Lewis EJ, Hunsicker LG, Clarke WR, Berl T, Pohl MA, Lewis JB, Ritz E, Atkins RC, Rohde R, Raz I, Collaborative Study Group. Renoprotective effect of the angiotensin-receptor antagonist irbesartan in patients with nephropathy due to type 2 diabetes. *N Engl J Med.* 2001;345:851–860.
12. Parving HH, Lehnert H, Bröchner-Mortensen J, Gomis R, Andersen S, Arner P, Irbesartan in Patients with Type 2 Diabetes and Microalbuminuria Study Group. The effect of irbesartan on the development of diabetic nephropathy in patients with type 2 diabetes. *N Engl J Med.* 2001;345:870–878.
13. Yusuf S, Pfeffer MA, Swedberg K, Granger CB, Held P, McMurray JJV, Michelson EL, Olofsson B, Ostergren J, CHARM Investigators and Committees. Effects of candesartan in patients with chronic heart failure and preserved left-ventricular ejection fraction: the CHARM-Preserved Trial. *Lancet Lond Engl.* 2003;362:777–781.
14. Cleland JGF, Tendera M, Adamus J, Freemantle N, Polonski L, Taylor J, PEP-CHF Investigators. The perindopril in elderly people with chronic heart failure (PEP-CHF) study. *Eur Heart J.* 2006;27:2338–2345.
15. Massie BM, Carson PE, McMurray JJ, Komajda M, McKelvie R, Zile MR, Anderson S, Donovan M, Iverson E, Staiger C, Ptaszynska A, I-PRESERVE Investigators. Irbesartan in patients with heart failure and preserved ejection fraction. *N Engl J Med.* 2008;359:2456–2467.
16. Pitt B, Pfeffer MA, Assmann SF, Boineau R, Anand IS, Claggett B, Clausell N, Desai AS, Diaz R, Fleg JL, Gordeev I, Harty B, Heitner JF, Kenwood CT, Lewis EF, O'Meara E, Probstfield JL, Shaburishvili T, Shah SJ, Solomon SD, Sweitzer NK, Yang S, McKinlay SM, TOPCAT Investigators. Spironolactone for heart failure with preserved ejection fraction. *N Engl J Med.* 2014;370:1383–1392.
17. McMurray JJV, Packer M, Desai AS, Gong J, Lefkowitz MP, Rizkala AR, Rouleau JL, Shi VC, Solomon SD, Swedberg K, Zile MR, PARADIGM-HF Investigators and Committees. Angiotensin-neprilysin inhibition versus enalapril in heart failure. *N Engl J Med.* 2014;371:993–1004.

18. Damman K, Gori M, Claggett B, Jhund PS, Senni M, Lefkowitz MP, Prescott MF, Shi VC, Rouleau JL, Swedberg K, Zile MR, Packer M, Desai AS, Solomon SD, McMurray JJV. Renal Effects and Associated Outcomes During Angiotensin-Nepriylsin Inhibition in Heart Failure. *JACC Heart Fail.* 2018;6:489–498.
19. Solomon SD, Zile M, Pieske B, Voors A, Shah A, Kraigher-Krainer E, Shi V, Bransford T, Takeuchi M, Gong J, Lefkowitz M, Packer M, McMurray JJV, Prospective comparison of ARNI with ARB on Management Of heart failUre with preserved ejection fractioN (PARAMOUNT) Investigators. The angiotensin receptor neprilysin inhibitor LCZ696 in heart failure with preserved ejection fraction: a phase 2 double-blind randomised controlled trial. *Lancet Lond Engl.* 2012;380:1387–1395.
20. Solomon SD, McMurray JJV, Anand IS, Ge J, Lam CSP, Maggioni AP, Martinez F, Packer M, Pfeffer MA, Pieske B, Redfield MM, Rouleau JL, van Veldhuisen DJ, Zannad F, Zile MR, Desai AS, Claggett B, Jhund PS, Boytsov SA, Comin-Colet J, Cleland J, Düngen H-D, Goncalvesova E, Katova T, Kerr Saraiva JF, Lelonek M, Merkely B, Senni M, Shah SJ, Zhou J, Rizkala AR, Gong J, Shi VC, Lefkowitz MP, PARAGON-HF Investigators and Committees. Angiotensin-Nepriylsin Inhibition in Heart Failure with Preserved Ejection Fraction. *N Engl J Med.* 2019;381:1609–1620.
21. Novartis Position on Clinical Study Transparency – Clinical Study Registration, Results Reporting and Data Sharing 2016. [cited 2020 Jun 10];Available from: <https://www.novartis.com/sites/www.novartis.com/files/clinical-trial-data-transparency.pdf>
22. Solomon SD, Rizkala AR, Lefkowitz MP, Shi VC, Gong J, Anavekar N, Anker SD, Arango JL, Arenas JL, Atar D, Ben-Gal T, Boytsov SA, Chen C-H, Chopra VK, Cleland J, Comin-Colet J, Duengen H-D, Echeverría Correa LE, Filippatos G, Flammer AJ, Galinier M, Godoy A, Goncalvesova E, Janssens S, Katova T, Køber L, Lelonek M, Linssen G, Lund LH, O'Meara E, Merkely B, Milicic D, Oh B-H, Perrone SV, Ranjith N, Saito Y, Saraiva JF, Shah S, Seferovic PM, Senni M, Sibulo AS, Sim D, Sweitzer NK, Taurio J, Vinereanu D, Vrtovec B, Widimský J, Yilmaz MB, Zhou J, Zweiker R, Anand IS, Ge J, Lam CSP, Maggioni AP, Martinez F, Packer M, Pfeffer MA, Pieske B, Redfield MM, Rouleau JL, Van Veldhuisen DJ, Zannad F, Zile MR, McMurray JJV. Baseline Characteristics of Patients With Heart Failure and Preserved Ejection Fraction in the PARAGON-HF Trial. *Circ Heart Fail.* 2018;11:e004962.
23. Packer M, Califf RM, Konstam MA, Krum H, McMurray JJ, Rouleau J-L, Swedberg K. Comparison of omapatrilat and enalapril in patients with chronic heart failure: the Omapatrilat Versus Enalapril Randomized Trial of Utility in Reducing Events (OVERTURE). *Circulation.* 2002;106:920–926.

24. Haynes R, Judge PK, Staplin N, Herrington WG, Storey BC, Bethel A, Bowman L, Brunskill N, Cockwell P, Hill M, Kalra PA, McMurray JJV, Taal M, Wheeler DC, Landray MJ, Baigent C. Effects of Sacubitril/Valsartan Versus Irbesartan in Patients With Chronic Kidney Disease. *Circulation*. 2018;138:1505–1514.
25. Ichikawa I, Pfeffer JM, Pfeffer MA, Hostetter TH, Brenner BM. Role of angiotensin II in the altered renal function of congestive heart failure. *Circ Res*. 1984;55:669–675.
26. Taal MW, Nenov VD, Wong W, Satyal SR, Sakharova O, Choi JH, Troy JL, Brenner BM. Vasopeptidase inhibition affords greater renoprotection than angiotensin-converting enzyme inhibition alone. *J Am Soc Nephrol JASN*. 2001;12:2051–2059.
27. Ljungman S, Kjekshus J, Swedberg K. Renal function in severe congestive heart failure during treatment with enalapril (the Cooperative North Scandinavian Enalapril Survival Study [CONSENSUS] Trial). *Am J Cardiol*. 1992;70:479–487.
28. Anand IS, Bishu K, Rector TS, Ishani A, Kuskowski MA, Cohn JN. Proteinuria, chronic kidney disease, and the effect of an angiotensin receptor blocker in addition to an angiotensin-converting enzyme inhibitor in patients with moderate to severe heart failure. *Circulation*. 2009;120:1577–1584.
29. McCallum W, Tighiouart H, Ku E, Salem D, Sarnak MJ. Trends in Kidney Function Outcomes Following RAAS Inhibition in Patients With Heart Failure With Reduced Ejection Fraction. *Am J Kidney Dis Off J Natl Kidney Found*. 2020;75:21–29.
30. Rossignol P, Cleland JGF, Bhandari S, Tala S, Gustafsson F, Fay R, Lamiral Z, Dobre D, Pitt B, Zannad F. Determinants and consequences of renal function variations with aldosterone blocker therapy in heart failure patients after myocardial infarction: insights from the Eplerenone Post-Acute Myocardial Infarction Heart Failure Efficacy and Survival Study. *Circulation*. 2012;125:271–279.
31. Damman K, Perez AC, Anand IS, Komajda M, McKelvie RS, Zile MR, Massie B, Carson PE, McMurray JJV. Worsening renal function and outcome in heart failure patients with preserved ejection fraction and the impact of angiotensin receptor blocker treatment. *J Am Coll Cardiol*. 2014;64:1106–1113.
32. Wali RK, Iyengar M, Beck GJ, Chartyan DM, Chonchol M, Lukas MA, Cooper C, Himmelfarb J, Weir MR, Berl T, Henrich WL, Cheung AK. Efficacy and safety of carvedilol in treatment of heart failure with chronic kidney

- disease: a meta-analysis of randomized trials. *Circ Heart Fail.* 2011;4:18–26.
33. Gu J, Noe A, Chandra P, Al-Fayoumi S, Ligueros-Saylan M, Sarangapani R, Maahs S, Ksander G, Rigel DF, Jeng AY, Lin T-H, Zheng W, Dole WP. Pharmacokinetics and pharmacodynamics of LCZ696, a novel dual-acting angiotensin receptor-neprilysin inhibitor (ARNi). *J Clin Pharmacol.* 2010;50:401–414.
 34. Pu Q, Amiri F, Gannon P, Schiffrin EL. Dual angiotensin-converting enzyme/neutral endopeptidase inhibition on cardiac and renal fibrosis and inflammation in DOCA-salt hypertensive rats. *J Hypertens.* 2005;23:401–409.
 35. Suematsu Y, Jing W, Nunes A, Kashyap ML, Khazaeli M, Vaziri ND, Moradi H. LCZ696 (Sacubitril/Valsartan), an Angiotensin-Receptor Neprilysin Inhibitor, Attenuates Cardiac Hypertrophy, Fibrosis, and Vasculopathy in a Rat Model of Chronic Kidney Disease. *J Card Fail.* 2018;24:266–275.
 36. Perkovic V, Jardine MJ, Neal B, Bompoint S, Heerspink HJL, Charytan DM, Edwards R, Agarwal R, Bakris G, Bull S, Cannon CP, Capuano G, Chu P-L, de Zeeuw D, Greene T, Levin A, Pollock C, Wheeler DC, Yavin Y, Zhang H, Zinman B, Meininger G, Brenner BM, Mahaffey KW, CREDENCE Trial Investigators. Canagliflozin and Renal Outcomes in Type 2 Diabetes and Nephropathy. *N Engl J Med.* 2019;380:2295–2306.
 37. Wanner C, Inzucchi SE, Lachin JM, Fitchett D, von Eynatten M, Matthews M, Johansen OE, Woerle HJ, Broedl UC, Zinman B, EMPA-REG OUTCOME Investigators. Empagliflozin and Progression of Kidney Disease in Type 2 Diabetes. *N Engl J Med.* 2016;375:323–334.
 38. Neal B, Perkovic V, Mahaffey KW, de Zeeuw D, Fulcher G, Erondou N, Shaw W, Law G, Desai M, Matthews DR, CANVAS Program Collaborative Group. Canagliflozin and Cardiovascular and Renal Events in Type 2 Diabetes. *N Engl J Med.* 2017;377:644–657.
 39. Perkovic V, de Zeeuw D, Mahaffey KW, Fulcher G, Erondou N, Shaw W, Barrett TD, Weidner-Wells M, Deng H, Matthews DR, Neal B. Canagliflozin and renal outcomes in type 2 diabetes: results from the CANVAS Program randomised clinical trials. *Lancet Diabetes Endocrinol.* 2018;6:691–704.
 40. Wiviott SD, Raz I, Bonaca MP, Mosenzon O, Kato ET, Cahn A, Silverman MG, Zelniker TA, Kuder JF, Murphy SA, Bhatt DL, Leiter LA, McGuire DK, Wilding JPH, Ruff CT, Gause-Nilsson IAM, Fredriksson M, Johansson PA, Langkilde A-M, Sabatine MS, DECLARE–TIMI 58 Investigators. Dapagliflozin and Cardiovascular Outcomes in Type 2 Diabetes. *N Engl J Med.* 2019;380:347–357.

41. McMurray JJV, Solomon SD, Inzucchi SE, Køber L, Kosiborod MN, Martinez FA, Ponikowski P, Sabatine MS, Anand IS, Bělohávek J, Böhm M, Chiang C-E, Chopra VK, de Boer RA, Desai AS, Diez M, Drozdz J, Dukát A, Ge J, Howlett JG, Katova T, Kitakaze M, Ljungman CEA, Merkely B, Nicolau JC, O'Meara E, Petrie MC, Vinh PN, Schou M, Tereshchenko S, Verma S, Held C, DeMets DL, Docherty KF, Jhund PS, Bengtsson O, Sjöstrand M, Langkilde A-M, DAPA-HF Trial Committees and Investigators. Dapagliflozin in Patients with Heart Failure and Reduced Ejection Fraction. *N Engl J Med*. 2019;381:1995–2008.