



HAL
open science

Accumulation of phages in drinking water biofilms: a way to elude chlorine?

Sandra Pelleïeux, Laurence Mathieu, C. Gantzer, Isabelle Bertrand

► To cite this version:

Sandra Pelleïeux, Laurence Mathieu, C. Gantzer, Isabelle Bertrand. Accumulation of phages in drinking water biofilms: a way to elude chlorine?. Biofilm 5, 2012, Paris, France. hal-03749875

HAL Id: hal-03749875

<https://hal.univ-lorraine.fr/hal-03749875>

Submitted on 11 Aug 2022

HAL is a multi-disciplinary open access archive for the deposit and dissemination of scientific research documents, whether they are published or not. The documents may come from teaching and research institutions in France or abroad, or from public or private research centers.

L'archive ouverte pluridisciplinaire **HAL**, est destinée au dépôt et à la diffusion de documents scientifiques de niveau recherche, publiés ou non, émanant des établissements d'enseignement et de recherche français ou étrangers, des laboratoires publics ou privés.

Accumulation of phages in drinking water biofilms: a way to elude chlorine?

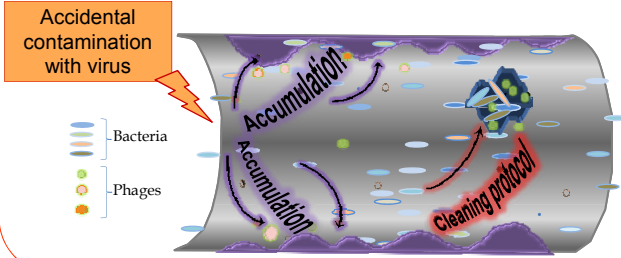


Sandra Pelleieux¹, Laurence Mathieu^{1,2}, Christophe Gantzer¹, Isabelle Bertrand¹

Université de Lorraine and CNRS. ¹LCPME (Laboratoire de Chimie Physique et Microbiologie pour l'Environnement), UMR 7564, F-54001 Nancy. ²EPHE - Ecole Pratique des Hautes Etudes
Contact: Isabelle.Bertrand@univ-lorraine.fr



Context and Objectives



Accumulation of F-specific RNA bacteriophages MS2, GA and Qβ on surfaces colonised with drinking water biofilms

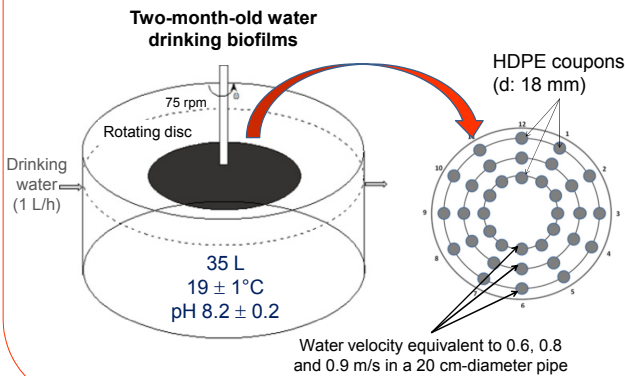
- ⇒ Phages showing differences in their surface properties
- ⇒ Different water velocities in laminar conditions

Efficiency of a cleaning protocol based on high level chlorination

- ⇒ On phages in suspension in water
- ⇒ On phages accumulated in the biofilm

Materials & Methods

Rotating disc reactor



F-specific RNA bacteriophages MS2, GA and Qβ



- **Structural similarities with enteric pathogenic viruses**
Size: 20-30 nm
Non-enveloped capsid and RNA genome

• Detection methods

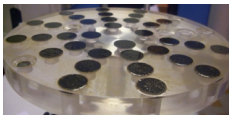
- Specific detection of viral genome by real time RT-PCR (Ogorzaly and Gantzer, 2006)
- Titration by culture method

• Surface properties recently studied (*Langlet *et al.*, 2008)

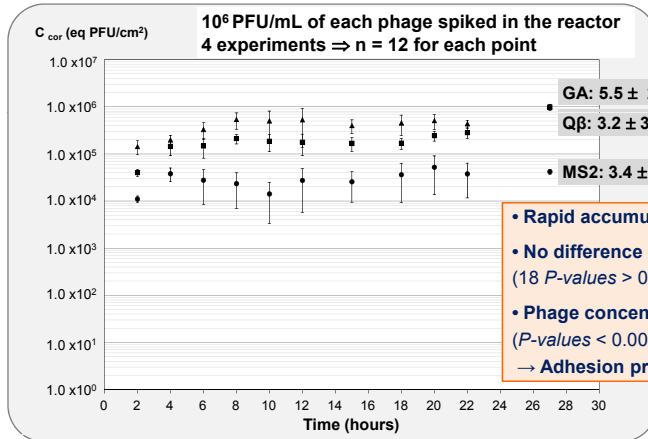
Phages / Virus	MS2	Qβ	GA	Norwalk virus	Hepatitis A virus
Isoelectric point (Michen and Graule, 2010)	2.2 - 3.9	1.9 - 5.3	2.1 - 2.6	5.5 - 6.0	2.8 - 5.8
Negative charge at pH 6.5* (electrophoretic mobility)	MS2 ≈ Qβ ≈ GA				
Hydrophobicity*	MS2 < Qβ < GA				

Accumulation of MS2, GA and Qβ phages on HDPE coupons colonised with drinking water biofilm

Drinking water biofilm characteristics



1.7x10⁷ cells/cm² (Live/Dead BacLight kit)
whatever the wall shear rate
≈ 0.1% cultivable (15 d)
> 95% showing intact membranes



- **Rapid accumulation of phages on biofilm within the first 3 hours.**
- **No difference in the phage concentration between 0.6 and 0.9 m/s (18 P-values > 0.05; α = 0.05, Mann-Whitney)**
- **Phage concentration on surfaces: MS2 < Qβ < GA (P-values < 0.0001, Mann Whitney)**
→ Adhesion profile of phages may be related to their hydrophobicity.

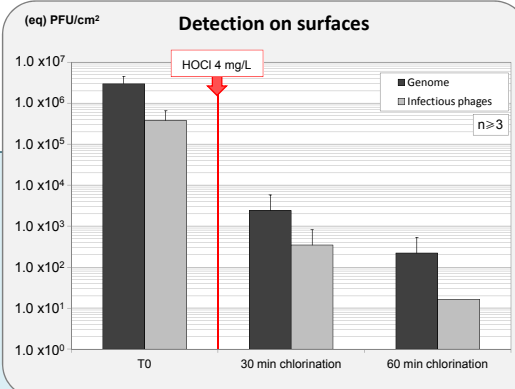
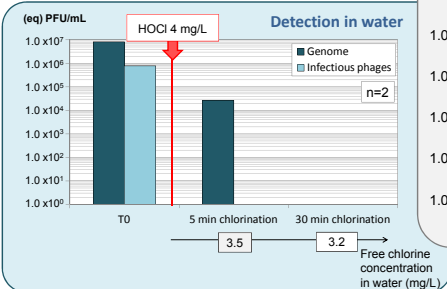
Pelleieux *et al.*, 2012

Protective effect of drinking water biofilm against chlorination

Experimental conditions

Two-month-old drinking water biofilms (pH 8.2 ± 0.2, 19 ± 1°C)
10⁶ PFU/mL of each phage spiked in the reactor

- **Adsorption step:** 3 hours (75 rpm) (T0)
- **Chlorination step:** 4 mg/L of sodium hypochlorite (HOCl)



- **Rapid inactivation of phages in water by chlorine**
- **Protective effect of the biofilm against chlorination (4 mg/L) for adsorbed phages**
Water: 5 log₁₀ reduction in less than 30 min
Surfaces: 2.5 log₁₀ reduction in 60 min

Acknowledgements: These results were obtained within the scope of the research program "Biofilm VIII" funded by the Agence de l'Eau Seine-Normandie (AESN), VEOUA Environment Recherche & Innovation (VERI) and the Syndicat des Eaux d'Ile-de-France (SEDFI), and coordinated by Université de Lorraine.

Langlet J., Gaboriaud F., Duval J.F., Gantzer C., 2008. Aggregation and surface properties of F-specific RNA phages: implication for membrane filtration processes. *Water Research* 42(10-11): 2769-2777.

Michen B. and Graule T., 2010. Isoelectric points of viruses. *Journal of Applied Microbiology* 109(2): 388-397.

Ogorzaly L. and Gantzer C., 2006. Development of real-time RT-PCR methods for specific detection of F-specific RNA bacteriophage genogroups: application to urban raw wastewater. *Journal of Virological Methods* 138(1-2): 131-139.

Pelleieux S., Bertrand I., Skali-Lami S., Mathieu L., Francis G., Gantzer C., 2012. Accumulation of MS2, GA, and Qβ phages on high density polyethylene (HDPE) and drinking water biofilms under flow/non-flow conditions. *Water Research* 46: 6574-6584.