

Impedance modeling of electrochemical systems

Application to PEMFCs and supercapacitors

J. Mainka, S. Touhami, W. Aït-Idir, P. Wu, J. Dillet, O. Lottin

Université de Lorraine, CNRS, LEMTA, F-54000 Nancy, France

julia.mainka@univ-lorraine.fr

Outline

1. Hydrogen & Electrochemical Systems (HES) research group
2. Introduction to Electrochemical Impedance Spectroscopy (EIS)
3. Modeling of electrochemical storage devices → Supercapacitors (SCs)
4. Modeling of electrochemical generators → Polymer Electrolyte Membrane Fuel Cells (PEMFCs)
5. Concluding remarks

Outline

1. Hydrogen & Electrochemical Systems (HES) research group

- Scientific context
- Topics – Issues - Approach
- Instrumented cells
- *In-situ* characterization

Research activities at LEMTA (director: P. Boulet)

- Energy and Transfer
- Fluid Media, Rheophysics
- MRI for Engineering
- Energy Carriers**
 - Heat Management (B. Rémy)
 - Management of Electrical Energy (S. Pierfederici)
 - **Hydrogen and Electrochemical Systems**
 - ✓ 9 researchers and engineers (J. Mainka, julia.mainka@univ-lorraine.fr)
 - ✓ 12 (+4) PhDs, post-docs and internships



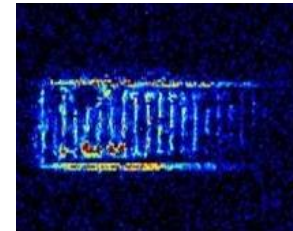
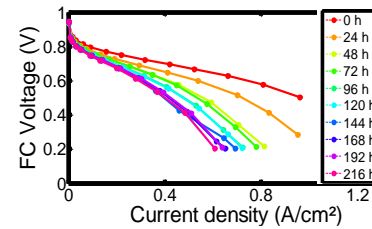
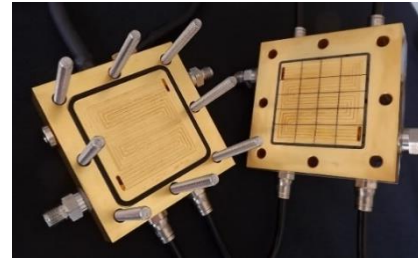
1. HES research group → Scientific context

Electrical engineering



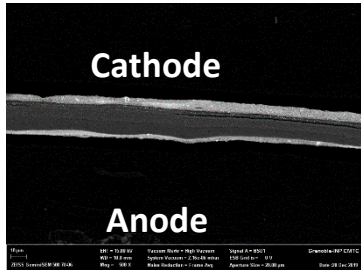
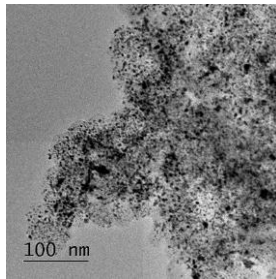
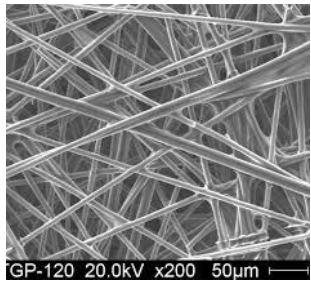
Systems for industrial and commercial applications...

HES group @



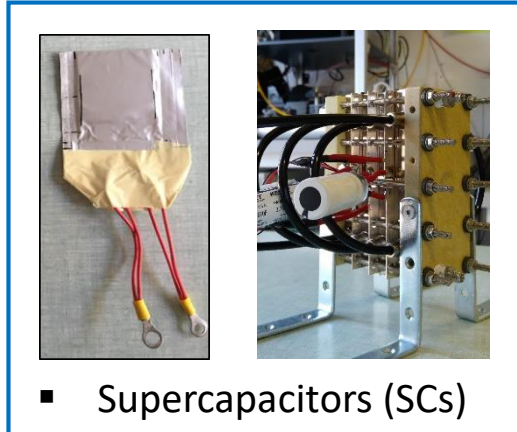
Membrane-Electrode Assemblies (MEA) and components of Fuel Cells (FC) and other electrochemical systems

Material sciences

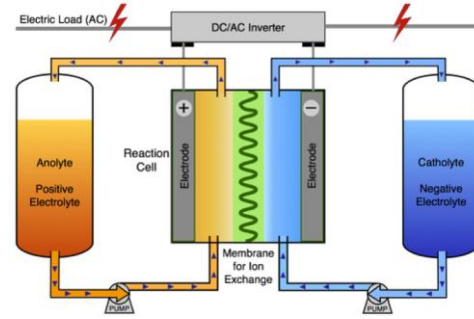


Membranes, catalysts, bipolar plates...

1. HES research group → Principal applications



- Supercapacitors (SCs)
- Hybridization PEMFC-SC



Redox flow-batteries



Joule-Thomson cooler

2022

2015

2009

NMR/MRI membranes



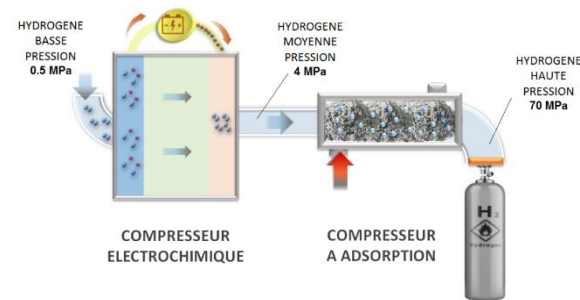
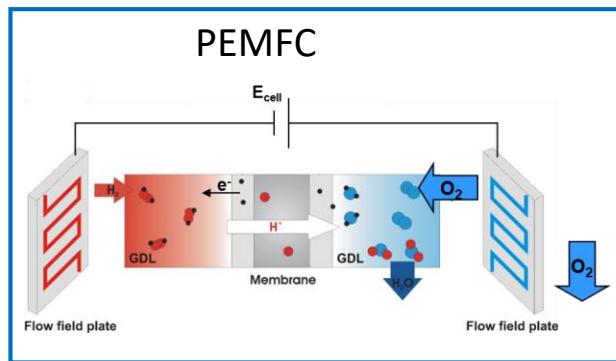
2017

- DBFC
- PEMWE
- FC Management Systems
- H₂ Compression (electrochemical & adsorption/desorption 700 bar)

2019

- Electrode fabrication (spray)
- Catalysts
- AEMFC

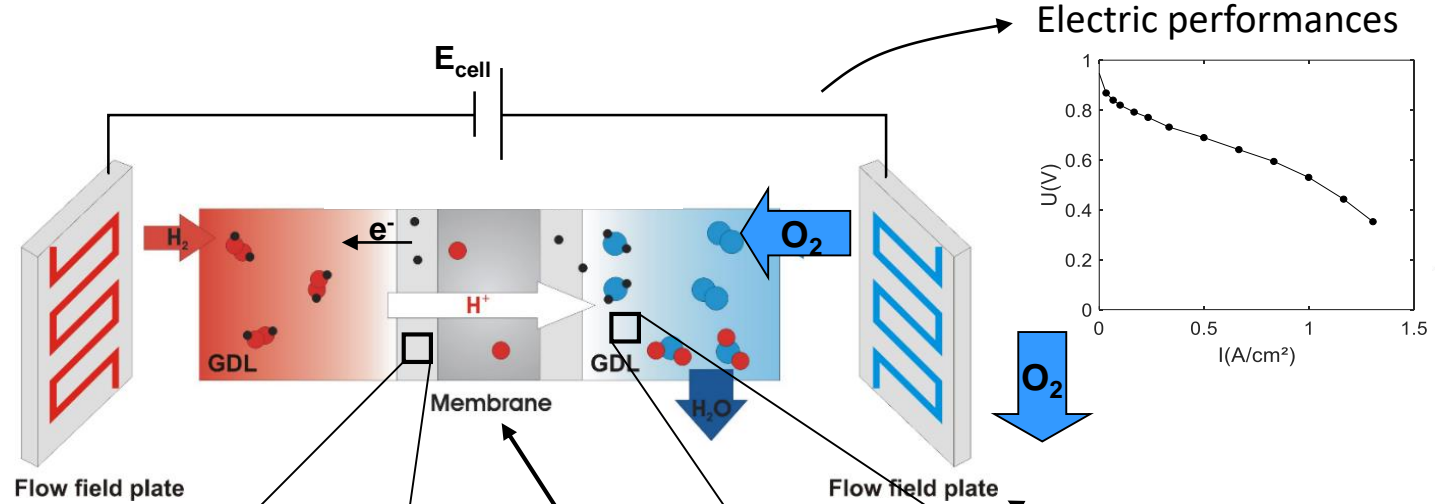
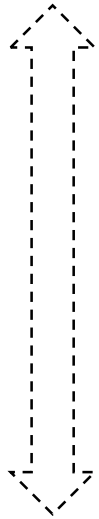
2002 - 2006



1. HES research group → Scientific approach

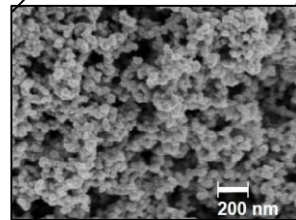
□ Macroscopic phenomena

→ Well-adapted measuring techniques

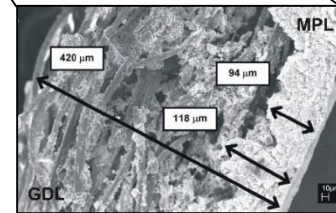


□ Microscopic phenomena

- Heat, charge and mass transfer
- Water management
- Degradation phenomena



Carter et al., Handbook of Fuel Cells, Wiley-VCH, 2009



Gostick et al., J. Power Sources 156, 2006



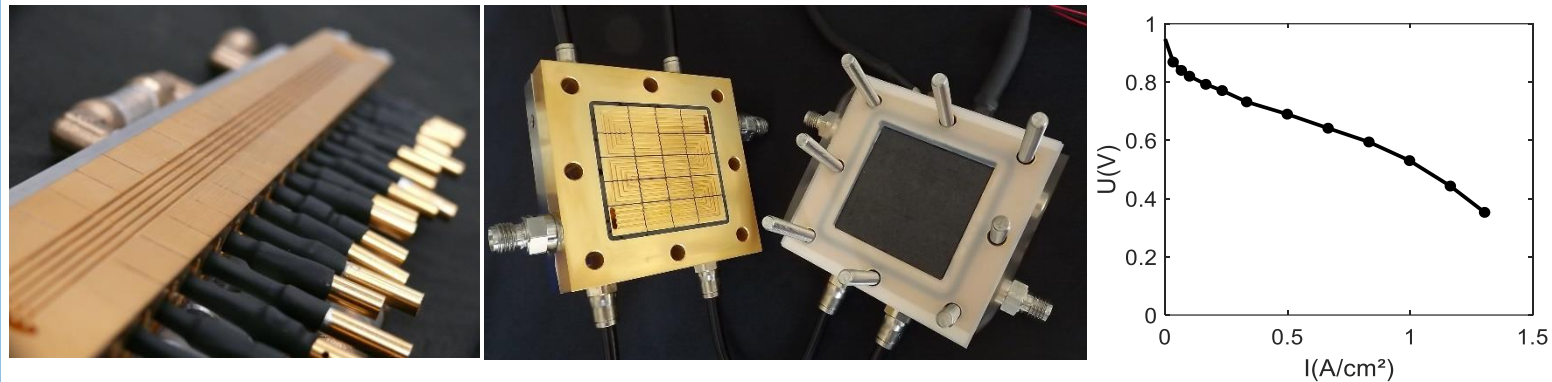
→ Appropriate description of physico-chemical processes and geometry

1. HES research group → Main topics & issues

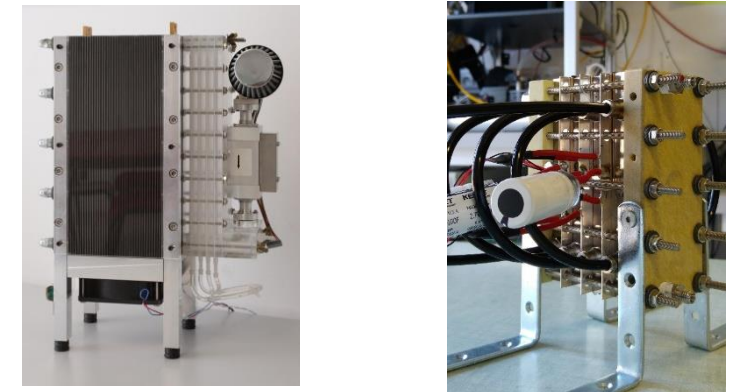
Ex-situ analyses → Structure and properties (membranes)



In-situ analyses → Electric performances and durability



Innovating architectures → Systems

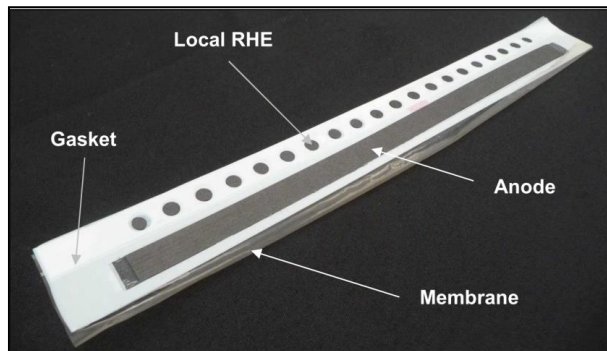
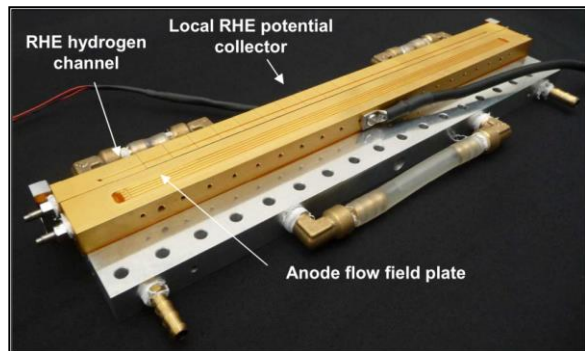


Main Issues → Performances & Durability

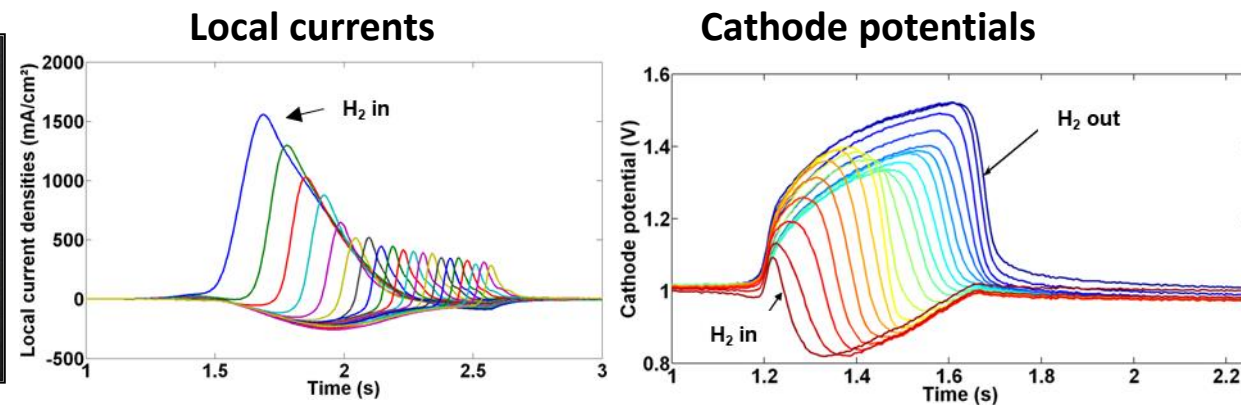
1. HES research group → Instrumented cells

☐ Segmented cells → Measurement of local performances and working conditions for durability studies

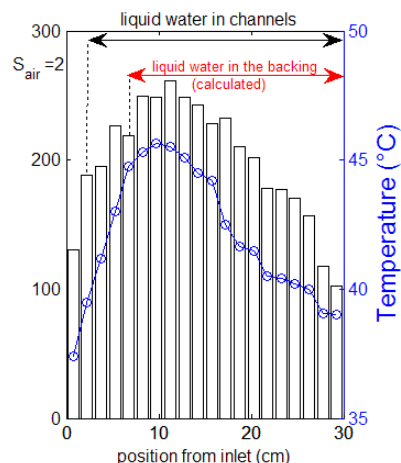
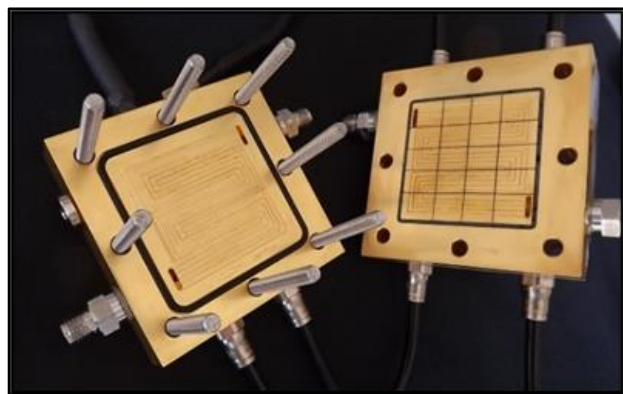
- Linear cells (30 x 1cm² - 5 parallel flow fields)



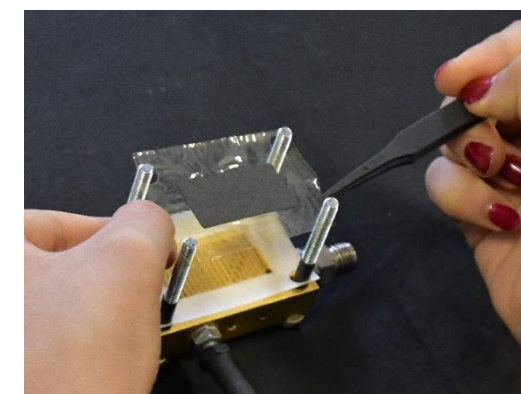
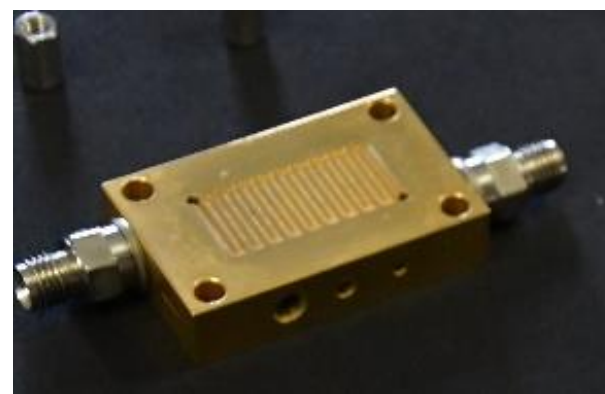
PEMFC dégradation Start & Stop



- Standard geometries (5cm x 5cm)



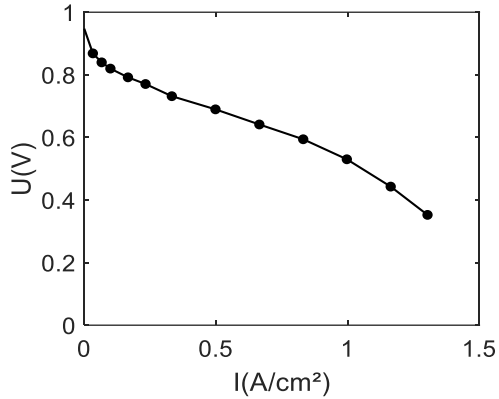
- ☐ Single cells (7.6cm²) → Test of new materials



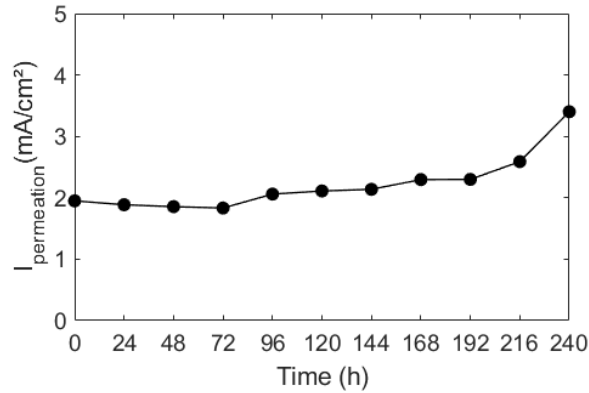
1. HES research activities → In-situ characterization

Steady-state methods

Polarization curves

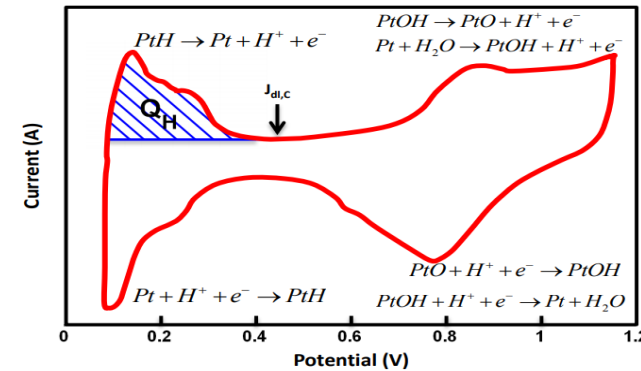


H₂ permeation current



Transient methods

Cyclic Voltammetry

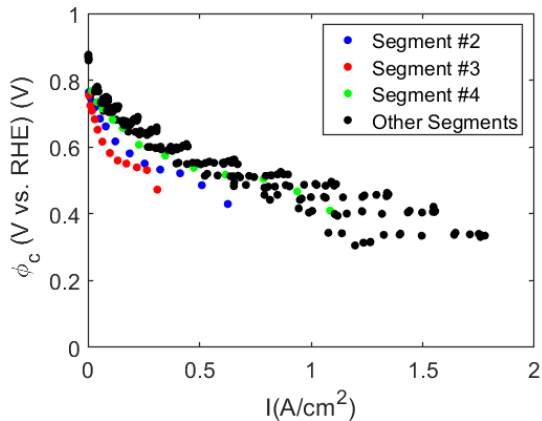


→ ElectroChemical Surface Area (ECSA)

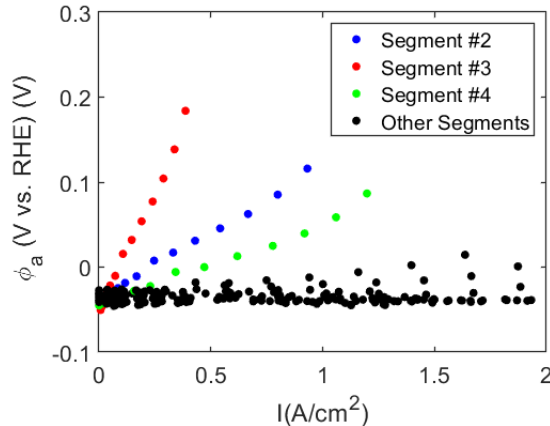
$$ECSA = \frac{Q_H}{210 \mu\text{C}/\text{cm}_{\text{Pt}}^{-2} \cdot L_{\text{Pt}}}$$

Electrode potentials

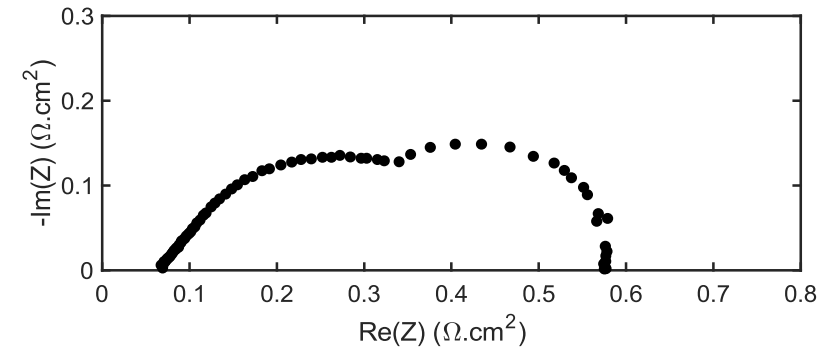
Cathode



Anode



Electrochemical Impedance Spectroscopy



→ Electrochemical parameters
→ Voltage drop sources

Outline

1. Hydrogen & Electrochemical Systems (HES) research group
2. Introduction to Electrochemical Impedance Spectroscopy (EIS)
3. Modeling of electrochemical storage devices → Supercapacitors (SCs)
4. Modeling of electrochemical generators → Polymer Electrolyte Membrane Fuel Cells (PEMFCs)
5. Concluding remarks

2. Introduction to EIS - Principle

- ❑ **Electrochemical Impedance Spectroscopy (EIS)** is a common technique used to **analyze the performance** of electrochemical systems such as fuel cells and supercapacitors
- ❑ **Method:** application of a small sinusoidal perturbation to a system and measurement of the associated dynamic response

$$\Delta I(t) = \Delta \bar{I} e^{i\omega t}$$

$$\Delta U(t) = \Delta \bar{U} e^{i(\omega t + \Phi)}$$



Transfer function →
 $\omega = 2\pi f$: angular frequency

Impedance

$$Z = \frac{\Delta U(t)}{\Delta I(t)} = \frac{\Delta \bar{U} e^{i(\omega t + \Phi)}}{\Delta \bar{I} e^{i\omega t}} = \bar{Z} e^{i\Phi} = Z' + i Z''$$

→ Separate *in-situ* analysis of microscopic phenomena occurring at different time scales in the frequency domain

- ❑ Two possible modes according to the control variable
 - **Potentiostatic mode** : voltage variation imposed → current perturbation measured
 - **Galvanostatic mode** : current variation imposed → voltage perturbation measured
- ❑ **Requirements**
 - Stable operating conditions
 - Linearity between input (stimulus) and output (response) signal
 - Causality

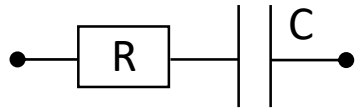
2. Introduction to EIS – Graphical representation

□ Nyquist plot

Cartesian form of the impedance $Z = Z' + i Z'' \rightarrow$ representation of the negative imaginary part $-Z''$ vs. the real part Z' for a given angular frequency $\omega = 2\pi f$

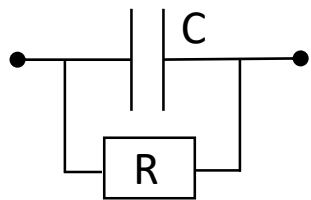
Examples

- R - C series connection

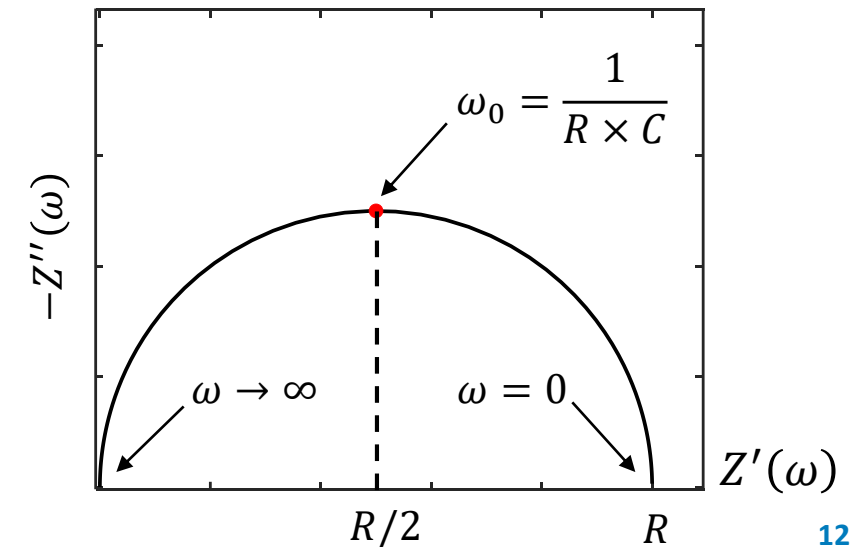
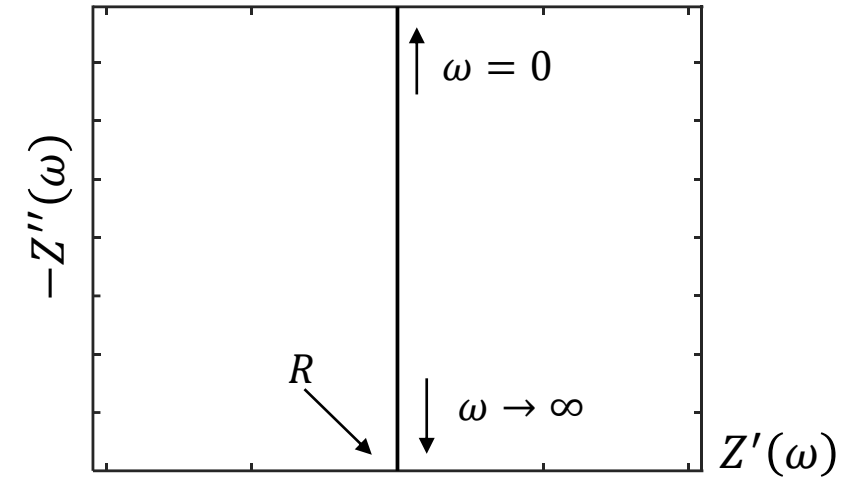


$$Z(\omega) = Z_R + Z_C = R + \frac{1}{i\omega C}$$

- R - C parallel connection



$$Z(\omega) = \left(\frac{1}{Z_R} + \frac{1}{Z_C} \right)^{-1} = \frac{1}{\frac{1}{R} + i\omega C}$$



2. Introduction to EIS – Interpretation

□ Main modeling approaches [1]

Physical models

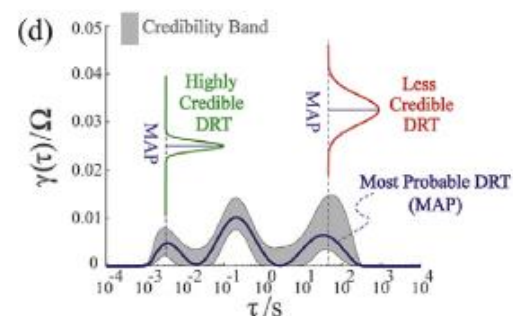
- Derived from problem specific physical phenomena
- Yield information about the phenomena governing the operation of the system
- More challenging to solve → generally limited to single components and/or simple systems

$$i2\pi f\tau_{ion}(\mu_{ion}^* - \mu_{eon}^*) = \Delta\mu_{ion}^*$$

$$i2\pi f\tau_{eon}(\mu_{eon}^* - \mu_{ion}^*) = \Delta\mu_{eon}^*$$

Distribution of Relaxation Times (DRT) [2]

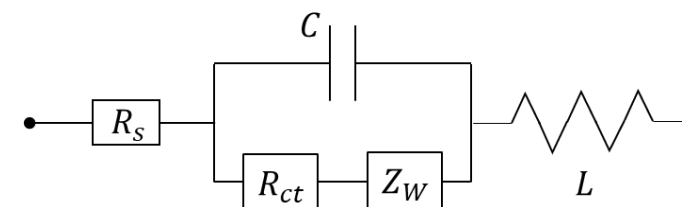
- Analysis of the system relaxation after the application of small signal perturbation
- Interpretation in terms of timescale distribution of the individual physical processes



$$Z(f) = R_0 + \int_{-\infty}^{\infty} \frac{\gamma(\tau)}{1 + i2\pi f\tau} d\tau$$

Equivalent Electrical Circuits (EECs)

- Assembly of electric components (resistors R , capacitors C , inductances L ...)
- Objective: reproduce the impedance $Z(\omega)$ of a system
- Parameters ideally related to physical phenomena



Outline

3. Modeling of electrochemical storage devices → Supercapacitors (SCs)

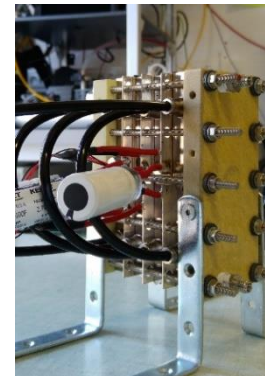
- Generalities
 - ✓ Operation principle
 - ✓ Characterization methods
- Usual EEC models
 - ✓ Electrical Double-Layer Capacitors (EDLCs)
 - ✓ Pseudo-Capacitors
- Application: characterization of hybrid Fiber-shaped SuperCapacitors (FSCs)



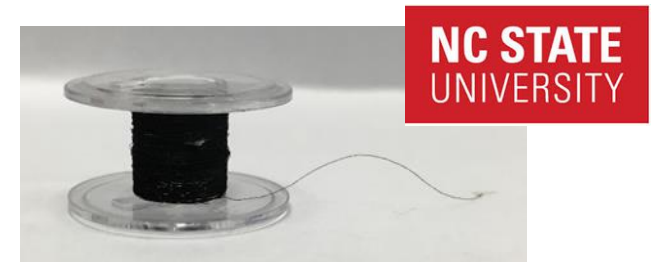
Energy recovery - SC equipped tram, Rio Janeiro Light Rail



Back-up power supply emergency exit (A380)



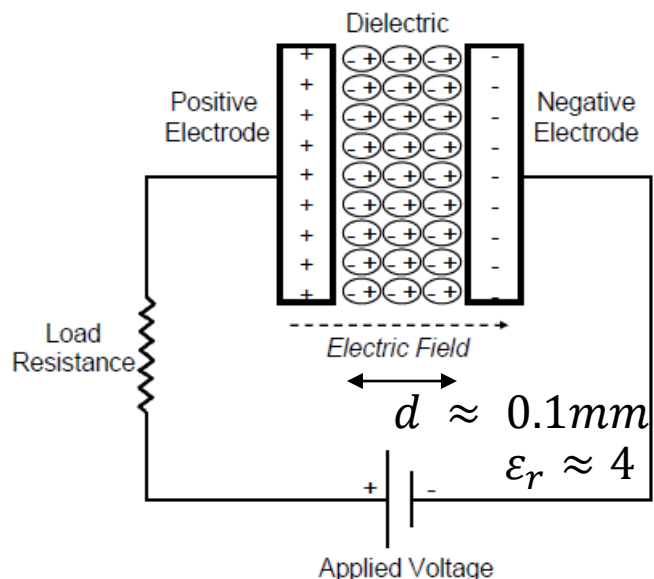
Voltage stabilization FC-SC hybridization



3. SC modeling – Operation principle

Classical (dielectric) capacitor

- Metal electrode → interface charge storage



$$\text{Capacitance: } C = \epsilon_0 \epsilon_r \frac{S}{d}$$

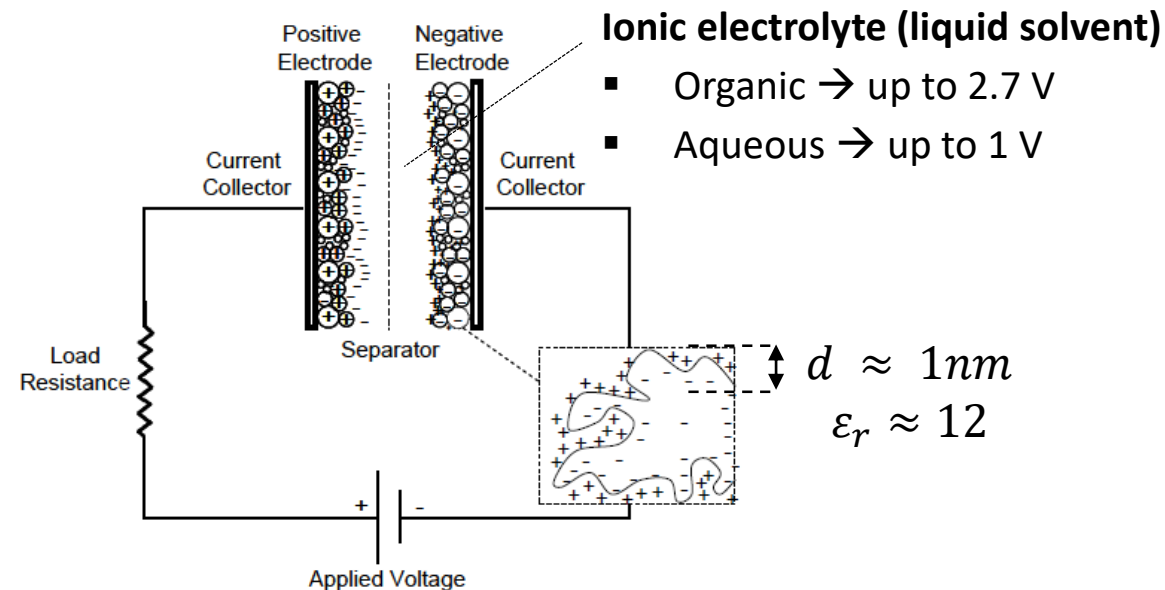


Audyn, 0.01µF, 400 V

$$\frac{C}{S} = 3.5 \cdot 10^{-5} \mu F \cdot cm^{-2}$$

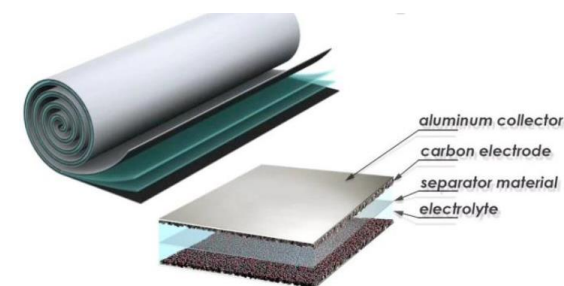
Supercapacitor (electrical double-layer capacitor)

- Porous electrode → double-layer charge storage



Maxwell, 5 F to 150 F, 2.7 V

$$\frac{C}{S} = 10 \mu F \cdot cm^{-2}$$



[1] Halper and Ellenbogen, MITRE Nanosystem Group (2006)

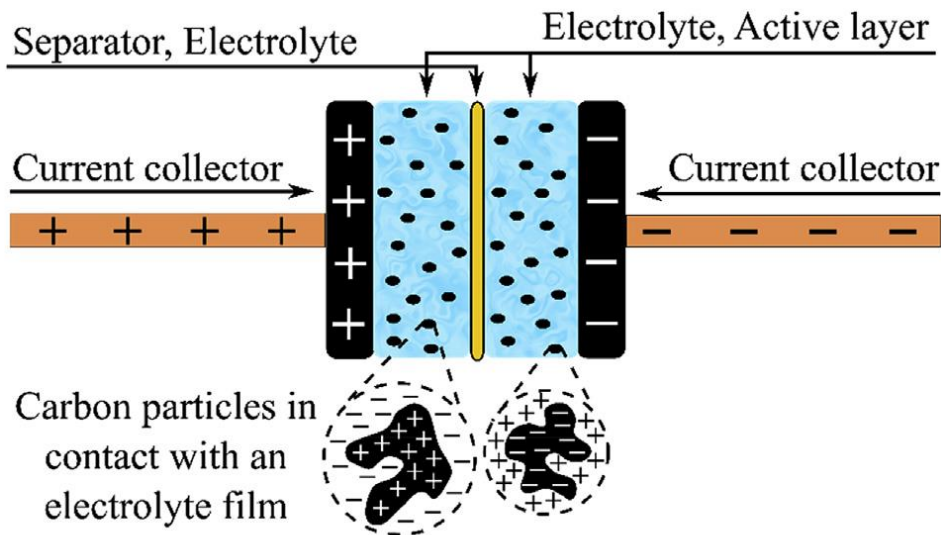
[2] P. Guillemet, Polytech Nantes lecture (2015)

3. SC modeling – Operation principle

□ Distinction according charge storage mechanism [1]

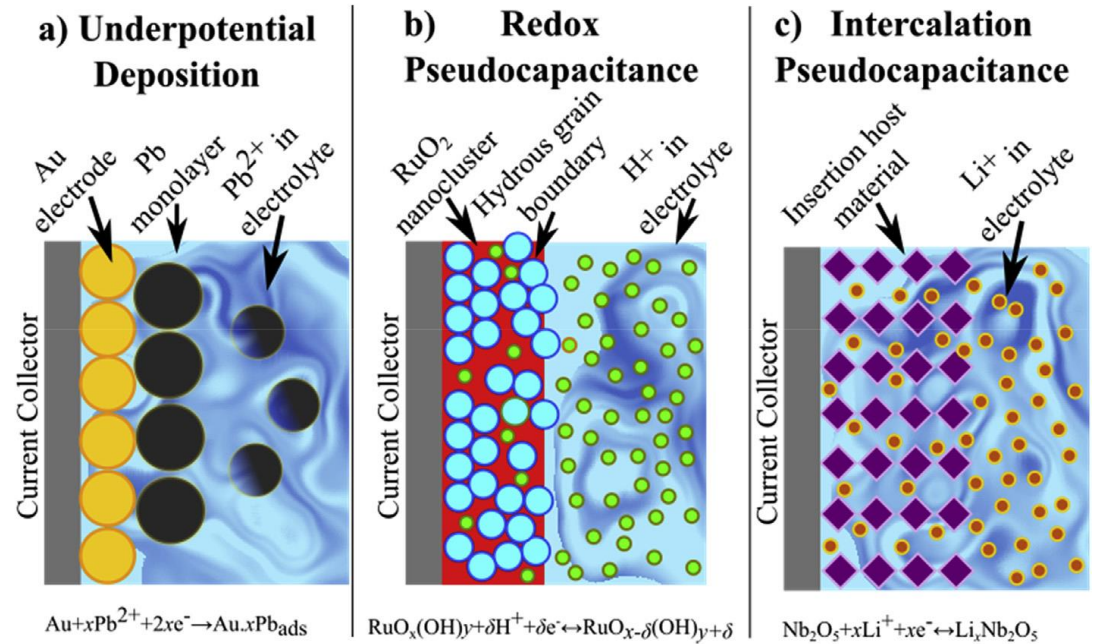
▪ Electrical Double-Layer Capacitors (EDLCs)

Charge storage in the porous electrodes in a purely capacitive manner within an Electrical Double-Layer (EDL)



▪ Pseudo-capacitors

Pseudo-capacitive charge storage through underpotential deposition, **redox reactions** and/or **ion intercalation**

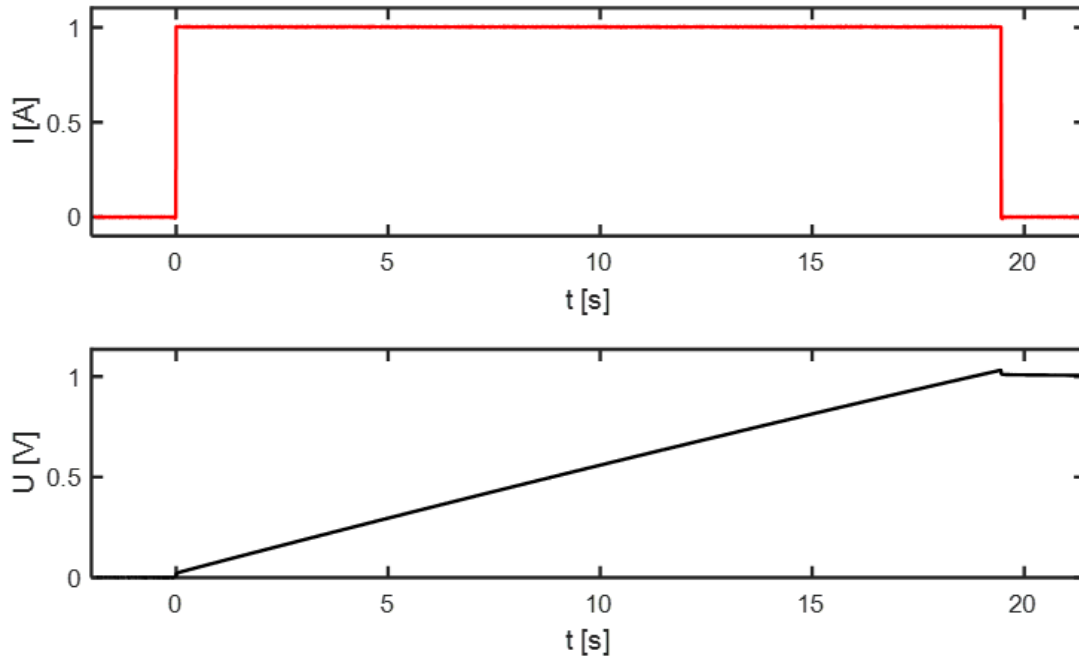


3. SC modeling – Characterization methods

Time domain

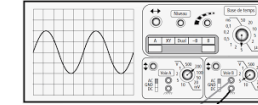


Charging/discharging curves

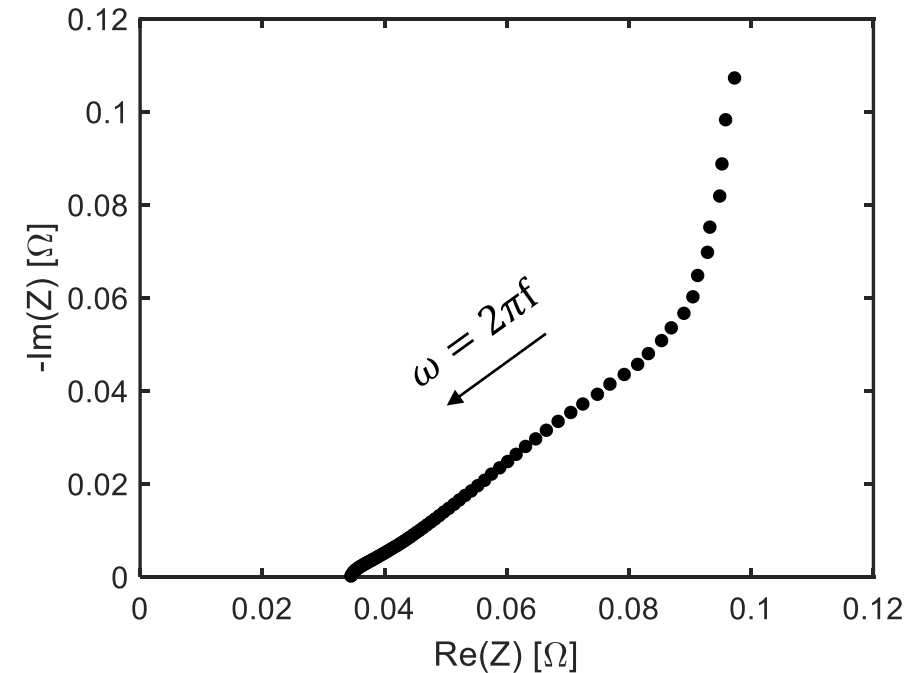


→ Analysis of **voltage** as a function of **time**.

Frequency domain



Electrochemical Impedance Spectroscopy (EIS)



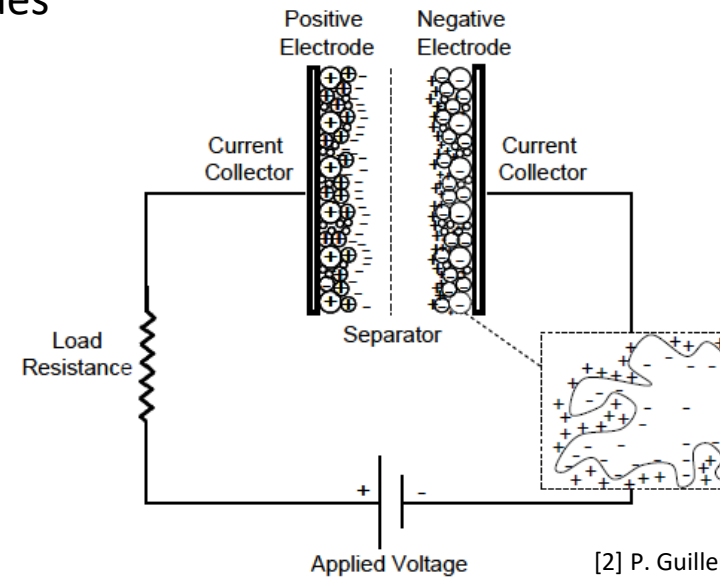
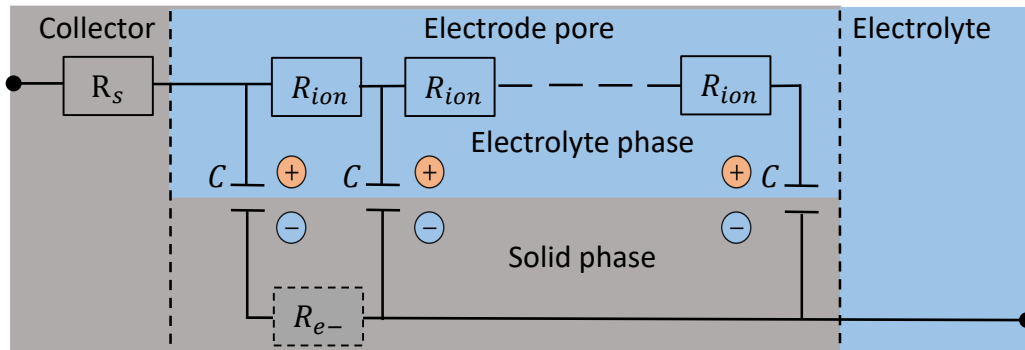
→ Analysis of **impedance** as a function of **frequency**.

Interpretation usually done by using **equivalent electrical circuits (EECs)**

3. SC modeling – Usual EEC models

□ EDLCs: electrostatic charge storage *without self-discharge*

Transmission Line Model (TLM) [1] → Volumetric (thick) electrodes



[2] P. Guillemet, Polytech Nantes lecture (2015)

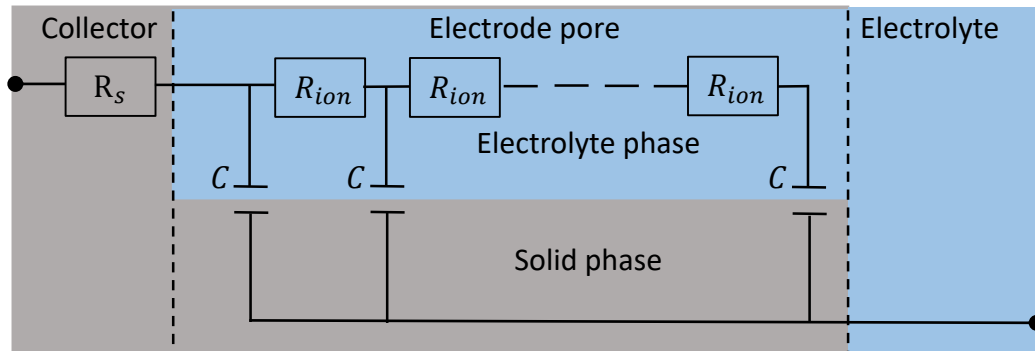
Hypotheses

- Electrode composed of cylindrical identical pores with length equal to its thickness
- **Classic TLM***: **EDL charge storage** (no el-chem. reaction)
- Electric behavior described by an assembly of resistances and capacitors in series
- For conventional SCs : electronic resistance (active material) R_{e-} **negligible compared to the ionic resistance R_{ion}** (electrolyte).

3. SC modeling – Usual EEC models

- EDLCs: electrostatic charge storage *without self-discharge*

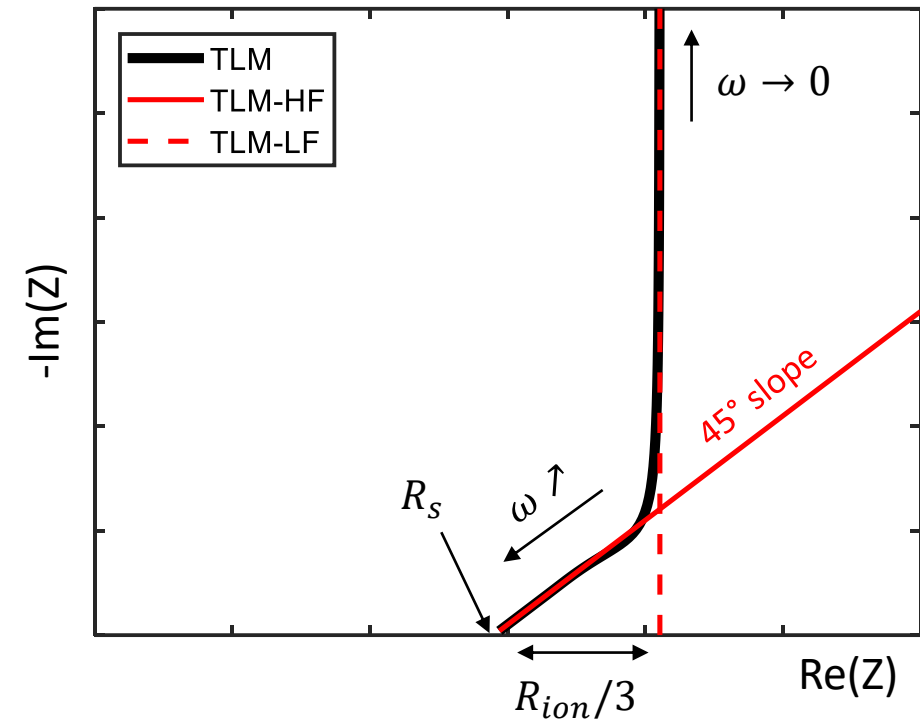
Transmission Line Model (TLM) [1] → Volumetric (thick) electrodes



- SC impedance

$$Z_{EDLC}(\omega) = R_s + Z_{TLM}(\omega) = R_s + \frac{R_{ion}}{\sqrt{i\omega C R_{ion}}} \coth(\sqrt{i\omega C R_{ion}})$$

- High frequency limit: $\lim_{\omega \rightarrow \infty} Z_{TLM} = \sqrt{\frac{R_{ion}}{i\omega C}}$
- Low frequency limit: $\lim_{\omega \rightarrow 0} Z_{TLM} = \frac{R_{ion}}{3} + \frac{1}{i\omega C}$



R_{ion} - ionic resistance (electrolyte)

C - EDL capacitance

R_s - series resistance (current collector + contacts)

3. SC modeling – Usual EEC models

□ EDLCs: electrostatic charge storage with self-discharge

Faradaic Transmission Line Model (F-TLM) [1] → Volumetric (thick) electrodes

→ Connecting a leakage resistance R_f in parallel to C

▪ **SC impedance**

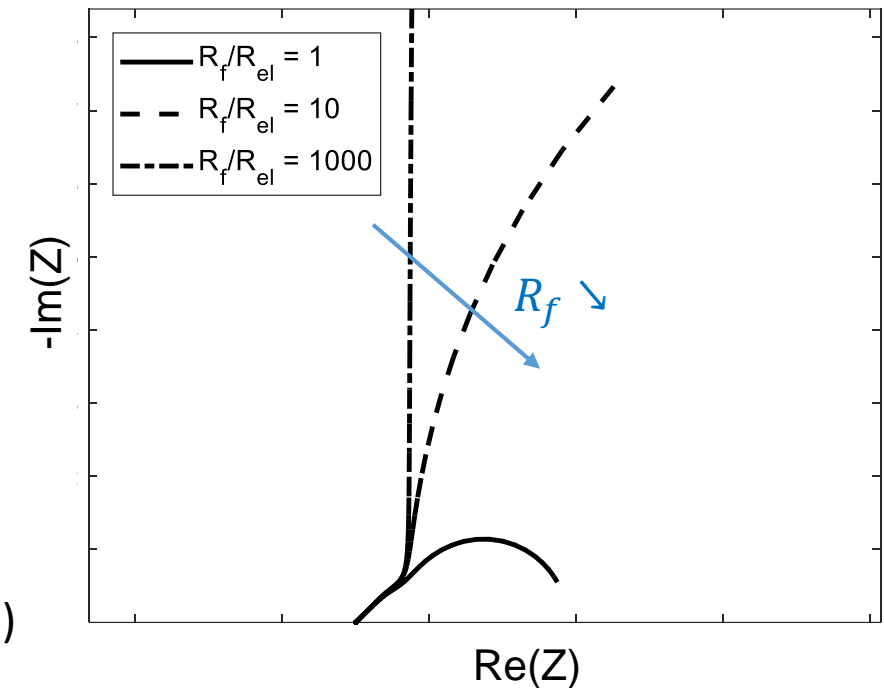
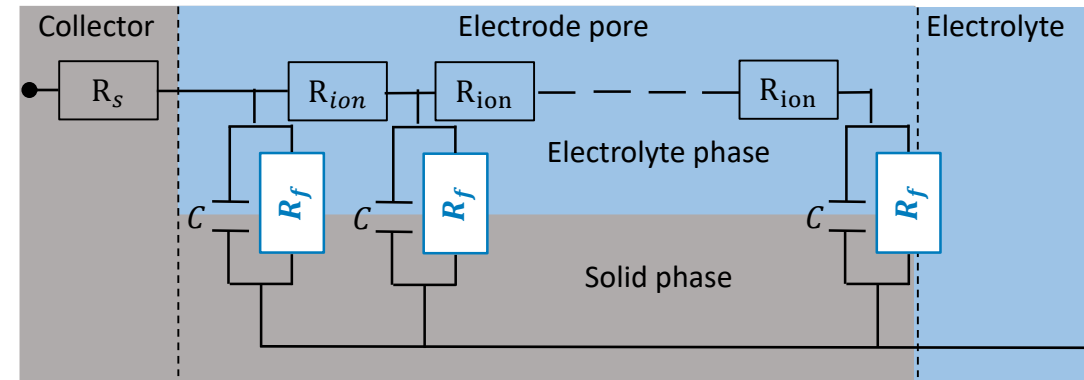
$$Z_{EDLC}(\omega) = R_s + Z_{F-TLM}(\omega)$$

$$= R_s + \frac{R_{ion}}{\sqrt{\frac{R_{ion}}{R_f} + i\omega C R_{ion}}} \coth\left(\sqrt{\frac{R_{ion}}{R_f} + i\omega C R_{ion}}\right)$$

▪ Limit for high leakage resistance R_f :

$$\lim_{R_f \rightarrow \infty} Z_{F-TLM} = \frac{R_{ion}}{\sqrt{i\omega C R_{ion}}} \coth(\sqrt{i\omega C R_{ion}}) = Z_{TLM}$$

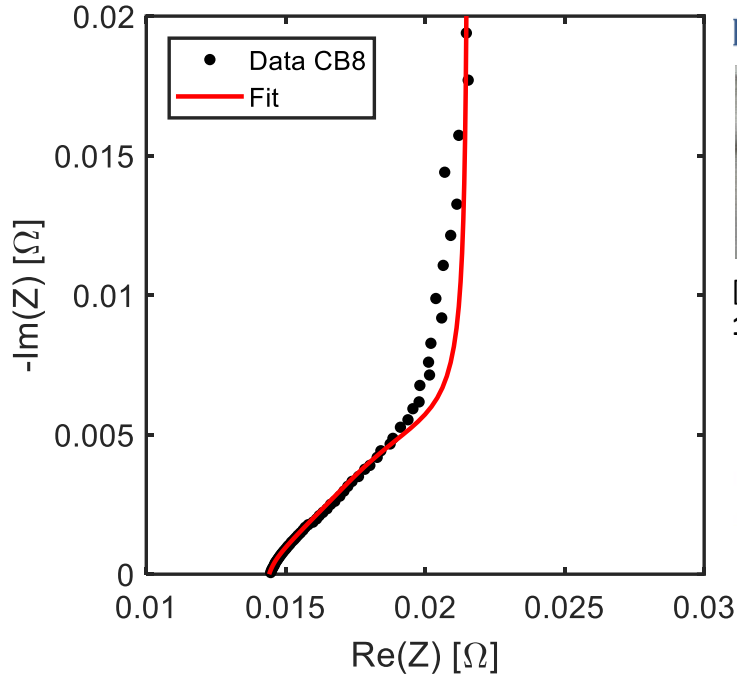
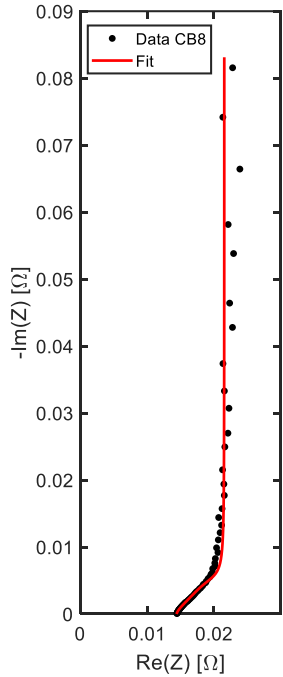
→ F-TLM as a general EEC for EDLCs (with and without self-discharge)



3. SC modeling – Usual EEC models

□ EDLCs: characterization example [1] ($f = 0.1 \text{ Hz} - 40 \text{ kHz}$)

CB8 @ 0.1V (aqueous electrolyte)



IMN INSTITUT DES MATÉRIAUX JEAN ROUXEL

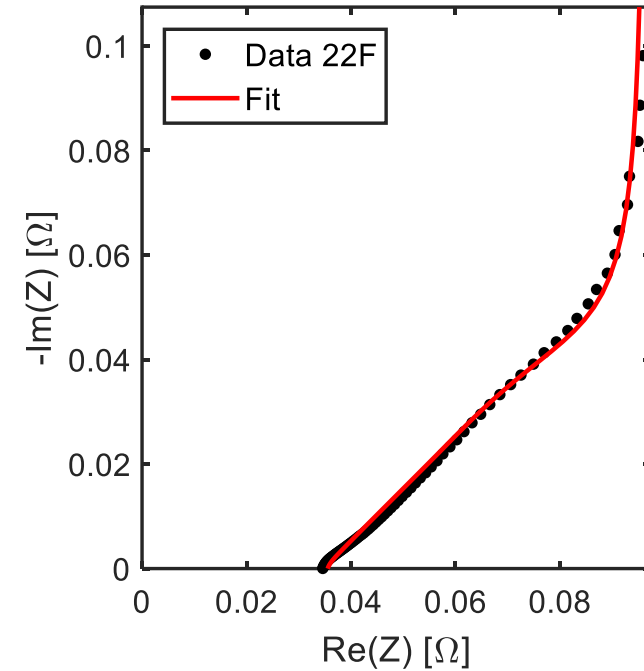


[2] Taleb et al., *Fuel Cells*, 18 (3), 299-305 (2018)

ASTRID

ANR DGA

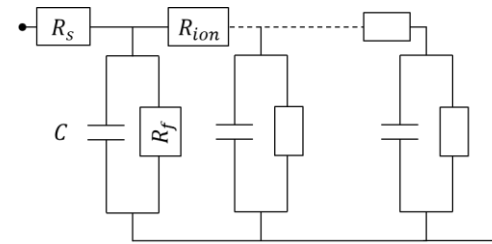
22F @ 0.1V (organic electrolyte)



nichicon



Least-Square Fitting	R_s [mΩ]	R_{ion} [mΩ]	R_f [Ω]	C [F]
CB8	14	23	$5 \cdot 10^{12}$	19
22F	35	186	$5 \cdot 10^{12}$	16



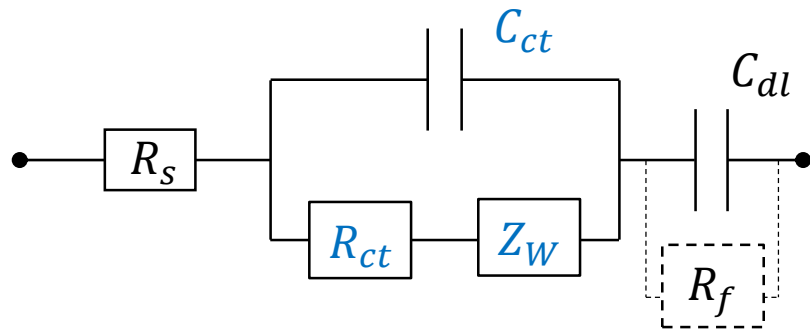
→ F-TLM well-adapted for EDLC impedance modeling

[1] Mainka et al., 235th ECS Meeting, Dallas – USA, May 26-30, 2019

3. SC modeling – Usual EEC models

□ Pseudo-capacitors: EDL + electrochemical charge storage (redox reactions)

Usual EEC: Randles circuit [1] → Interfacial (thin) electrodes

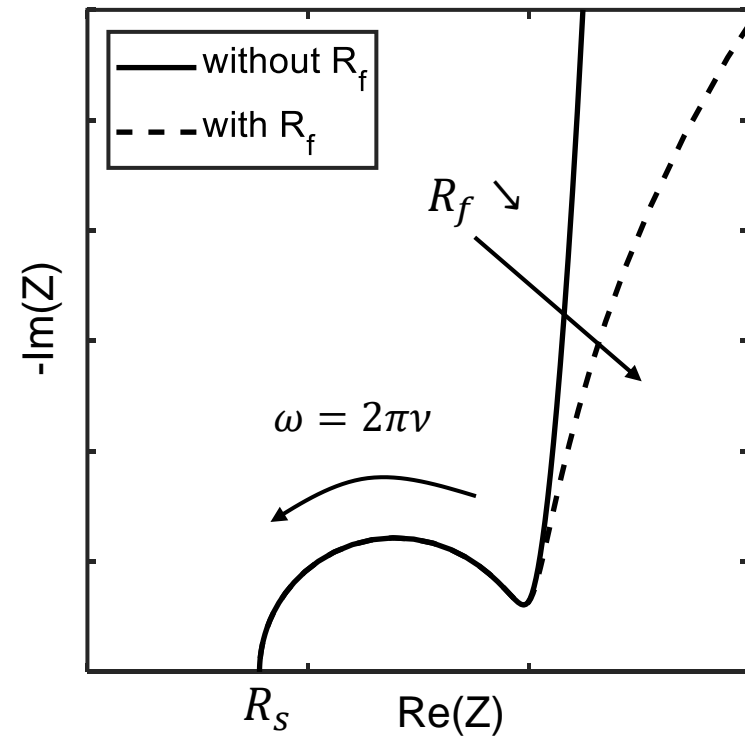


▪ SC impedance

$$Z_{SC}(\omega) = R_s + Z_{Randles} + \frac{1}{i\omega C_{dl}}$$

$$= R_s + \underbrace{\left(\frac{1}{R_{ct} + Z_w(\omega)} + i\omega C_{ct} \right)^{-1}}_{\text{el.-chem. contribution}} + \underbrace{\frac{1}{i\omega C_{dl}}}_{\text{EDL contribution}}$$

with $Z_w(R_d, \tau_d) = R_d \frac{\tanh \sqrt{i\omega\tau_d}}{\sqrt{i\omega\tau_d}}$ - Warburg diffusion impedance

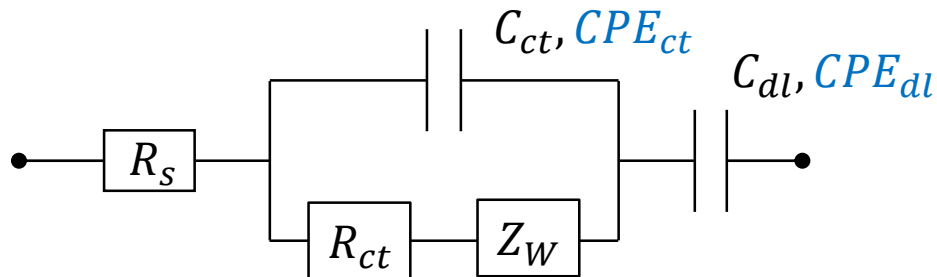


R_{ct} - charge transfer resistance
 C_{dl} - double-layer capacitance

3. SC modeling – Usual EEC models

□ Pseudo-capacitors: EDL + electrochemical charge storage (redox reactions) → ion diffusion in porous media

Usual EEC: Randles circuit [1] → Interfacial (thin) electrodes



▪ SC impedance

$$Z_{SC}(\omega) = R_s + \left(\frac{1}{R_{ct} + Z_W(\omega)} + \frac{1}{Z_{CPE_{ct}}} \right)^{-1} + Z_{CPE_{dl}}$$

with $Z_{CPE_{ct/dl}}(Q, \alpha) = \frac{1}{Q(i\omega)^\alpha}$ - Constant phase element (CPE)

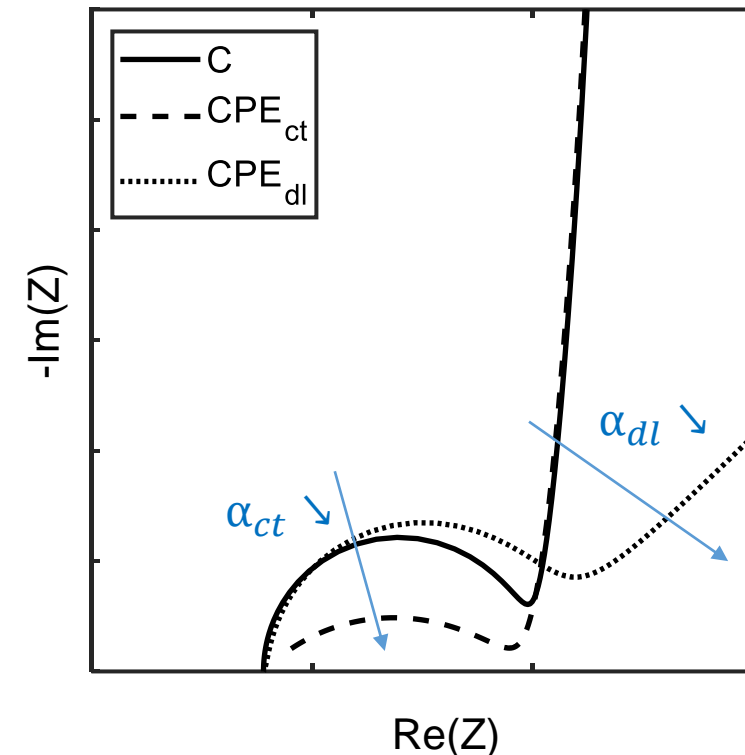
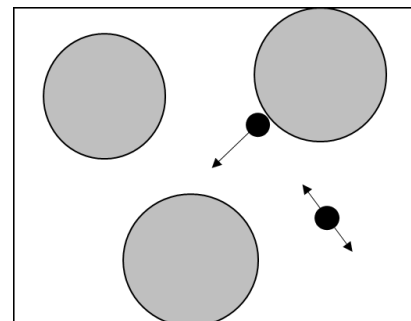
CPE parameter Q in $[F \cdot s^{\alpha-1}]$

Exponent α in $[-]$ → indicator for type of diffusion [1]

$0 < \alpha < 1$: subdiffusion (porous media)

$\alpha = 1$: normal diffusion

$\alpha > 1$: faster than normal diffusion



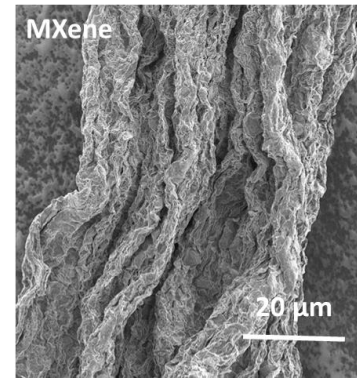
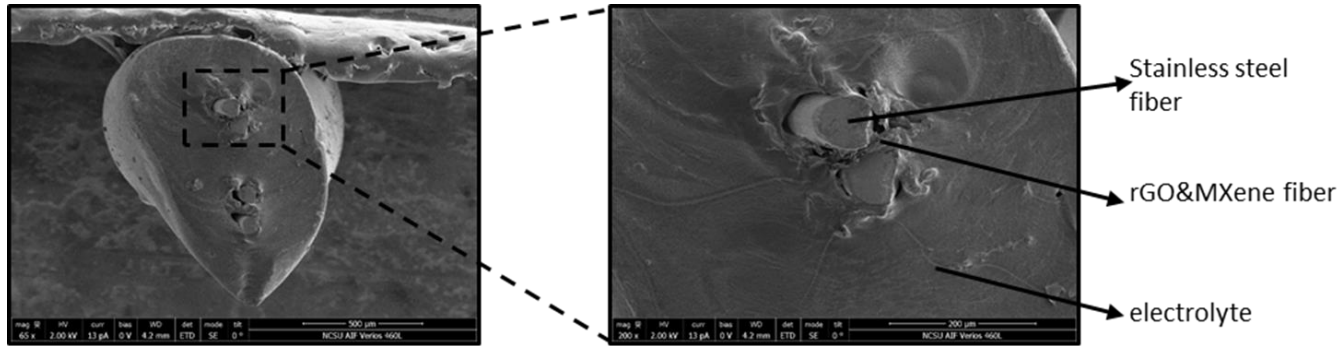
[1] Niya, Hoorfar, Electrochim. Acta 188, 2016

3. SC modeling – Characterization of hybrid FSCs [1]

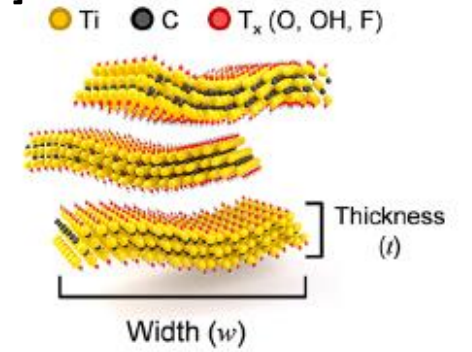
Hybrid Fiber-shaped SuperCapacitors (FSCs) → pseudo-capacitive FSCs



SEM image of SC fibers [2]

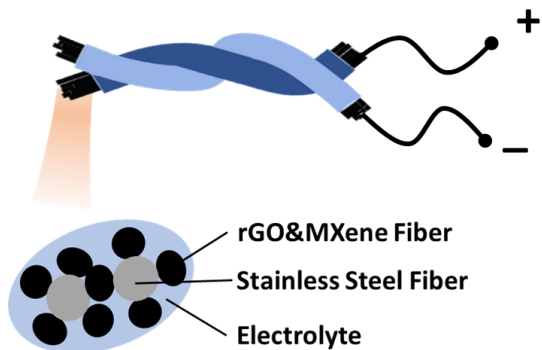


Chemical structure of MXene (Ti_3C_2X) [3]



[2] He et al., *J. Mater. Chem. A*, 7, 6869~6876 (2019)

[3]Zhang et al., *J. Mater. ACS Cent. Sci.*, 6, 254-265 (2020)



	FSC1
Electrode <ul style="list-style-type: none"> Diameter $\approx 500 \mu m$ Length 15 cm 	40% rGO 60% MXene: Ti_3C_2X (X: -OH, -O, -F)
Current collector	Stainless steel
Electrolyte (aqueous polymer)	1M sulfuric acid (H_2SO_4) /Polyvinyl alcohol (PVA) solution

→ Expected charge storage : el-chem + EDL (capacitive + ion intercalation)

3. SC modeling – Characterization of hybrid FSCs [1]

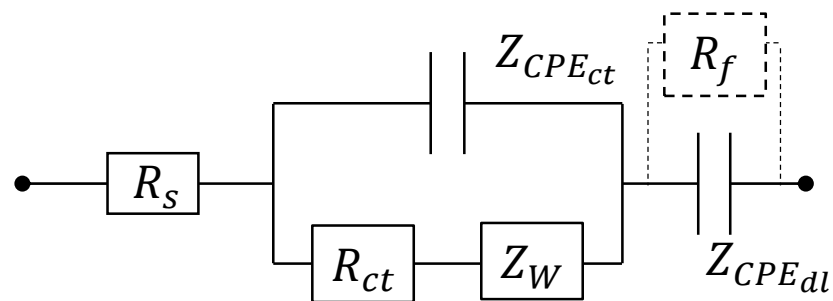
☐ Modeled charge storage mechanisms

- Electrochemical → Randles (thin electrode) vs. M-TLM (thick electrode)
- EDL (capacitive + ion intercalation) → constant phase element $Z_{CPE_{dl}}$

☐ EECs analyzed

Randles

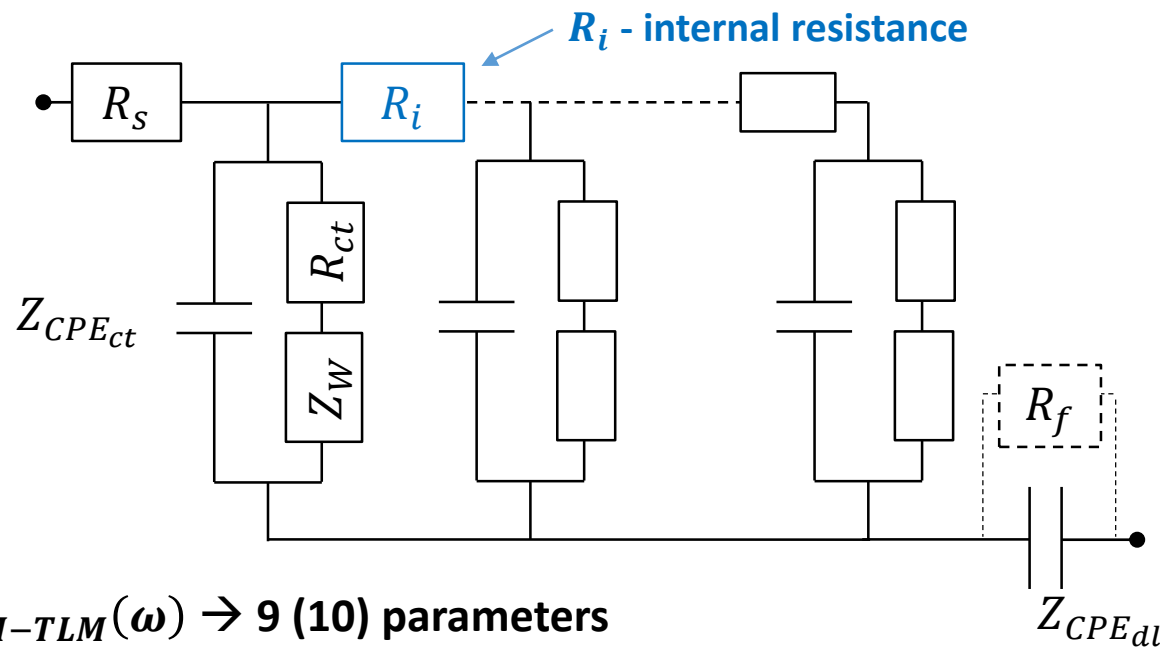
→ Interfacial (thin) electrodes



$Z_{Randles}(\omega) \rightarrow 8 \text{ (9) parameters}$

Modified - Transmission Line Model (M-TLM)

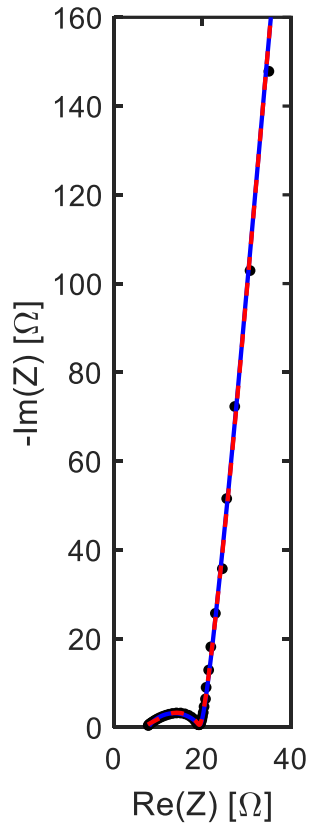
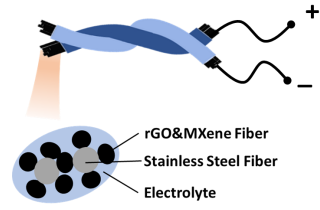
→ Generalization of Randles EEC for thick (long fiber) electrodes [1,2]



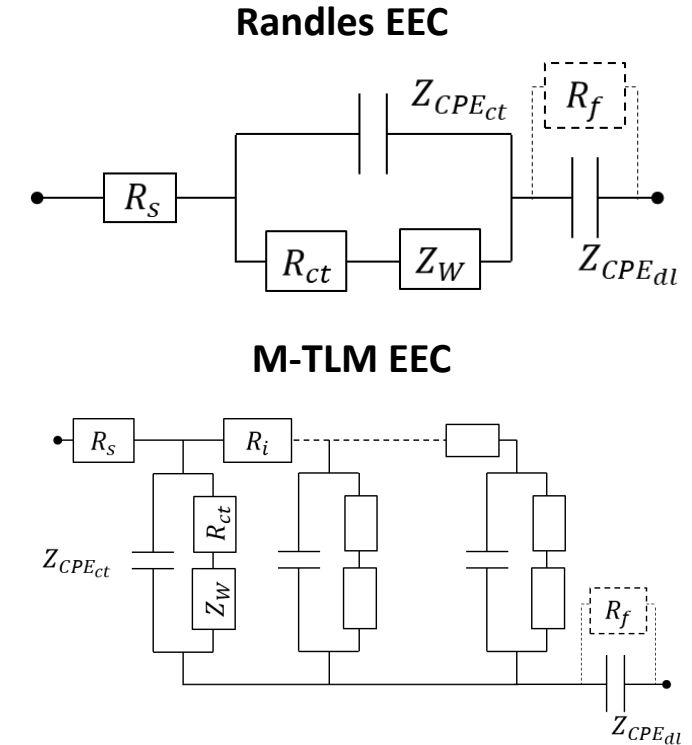
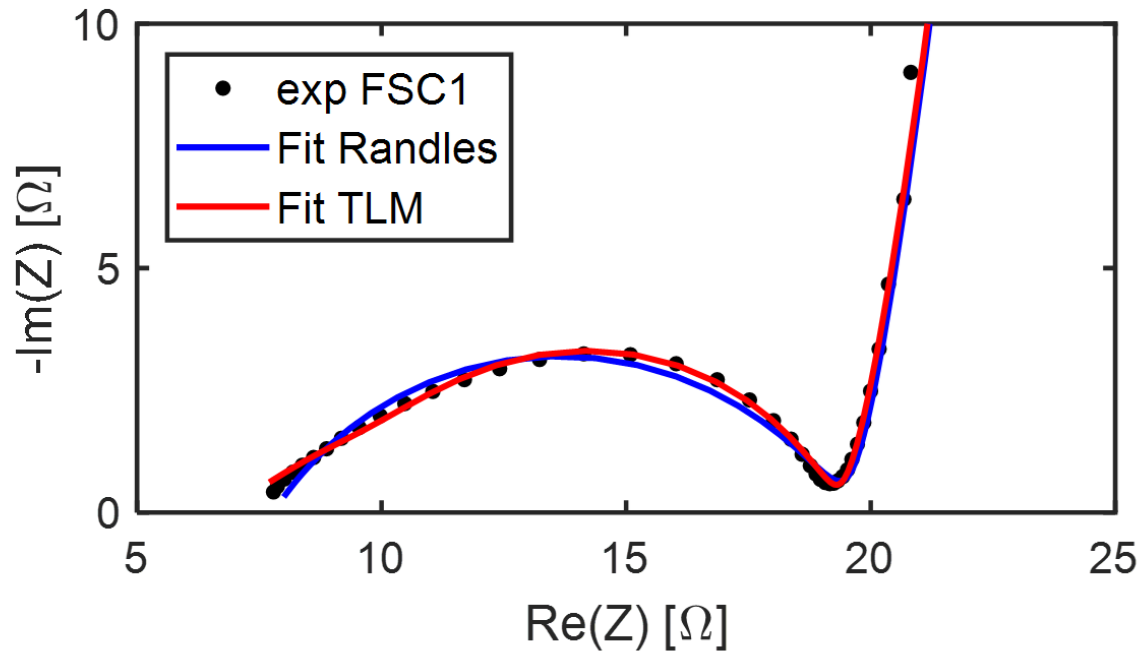
$Z_{M-TLM}(\omega) \rightarrow 9 \text{ (10) parameters}$

3. SC modeling – Characterization of hybrid FSCs [1]

□ FSC1 data: pseudo-capacitors (15 cm devices)



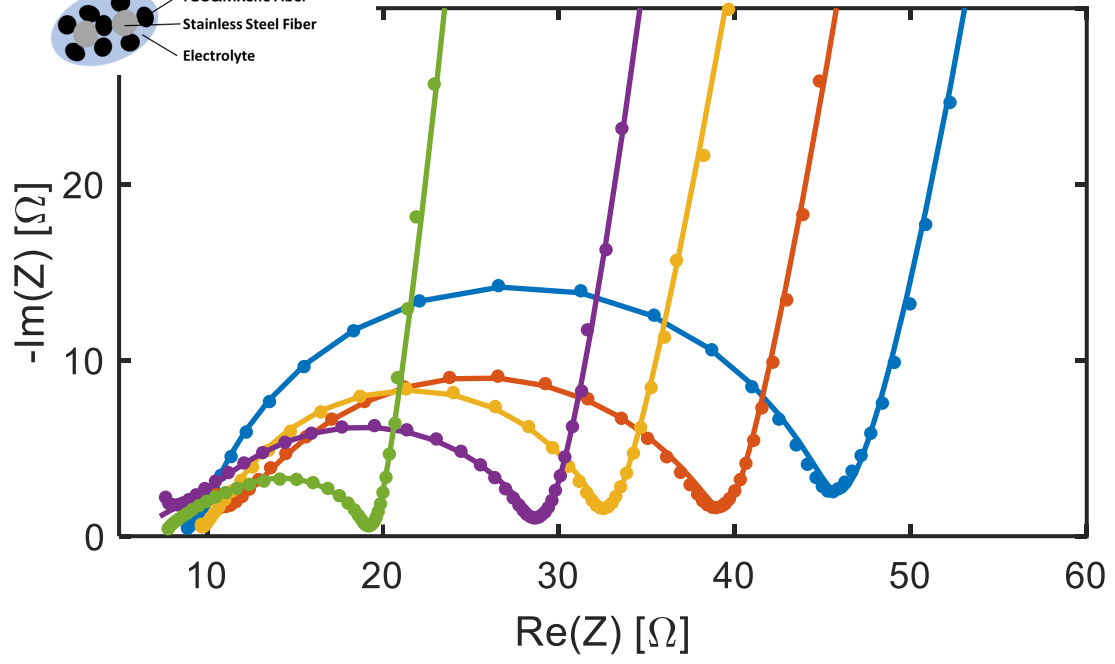
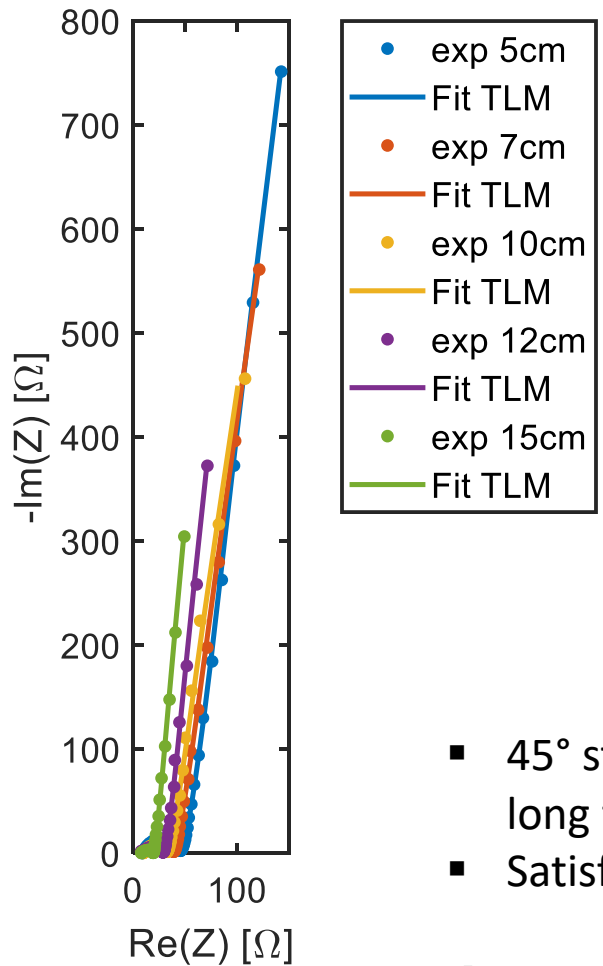
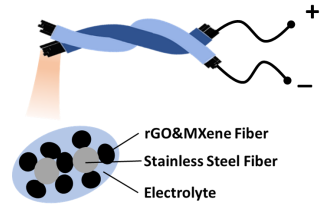
Frequencies : 1 mHz to 1MHz



- **High frequencies** : only M-TLM able to fit the 45° straight line
- **Intermediate frequencies**: better fit of faradaic loop using M-TLM
- **Low frequencies**: satisfying fit quality for both models → self-discharge negligible

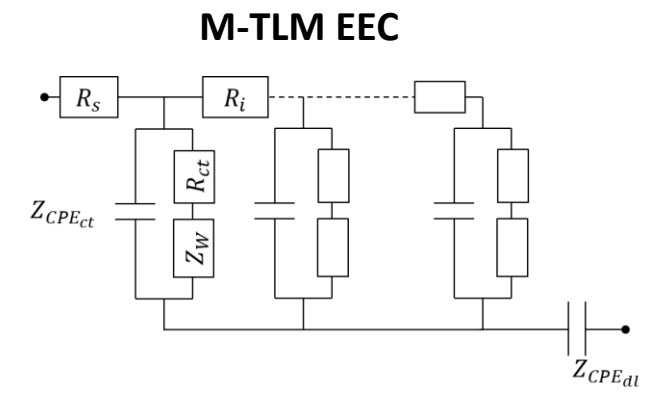
3. SC modeling – Characterization of hybrid FSCs [1]

□ FSC1 data: pseudo-capacitors

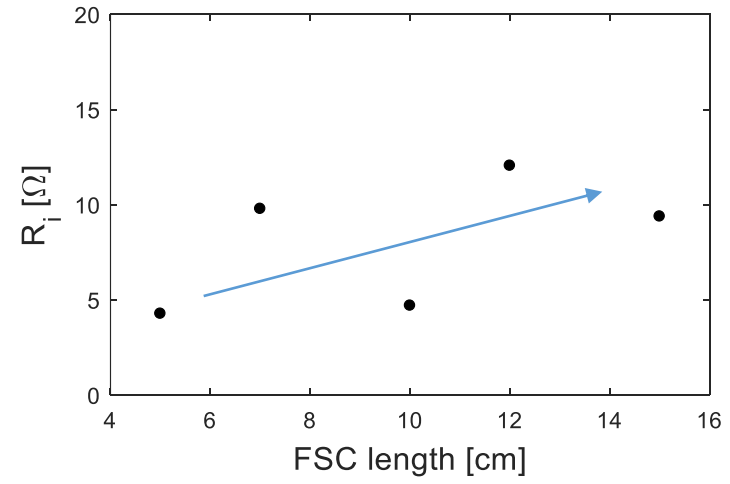


- 45° straight line at highest frequencies more developed for long fibers → R_i increases
- Satisfying fit quality also for short fibers

→ M-TLM as generalized EEC able to fit all FSCs

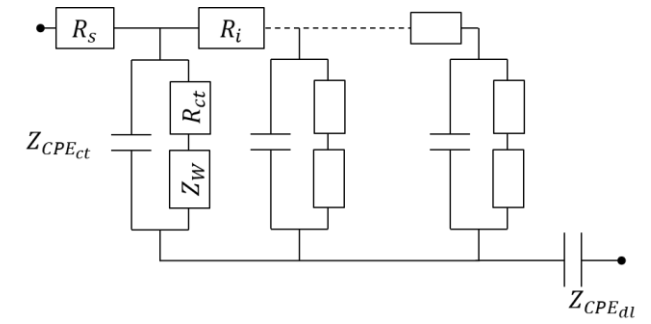


Electrode internal resistance R_i

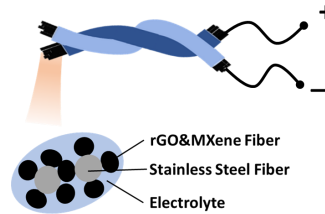
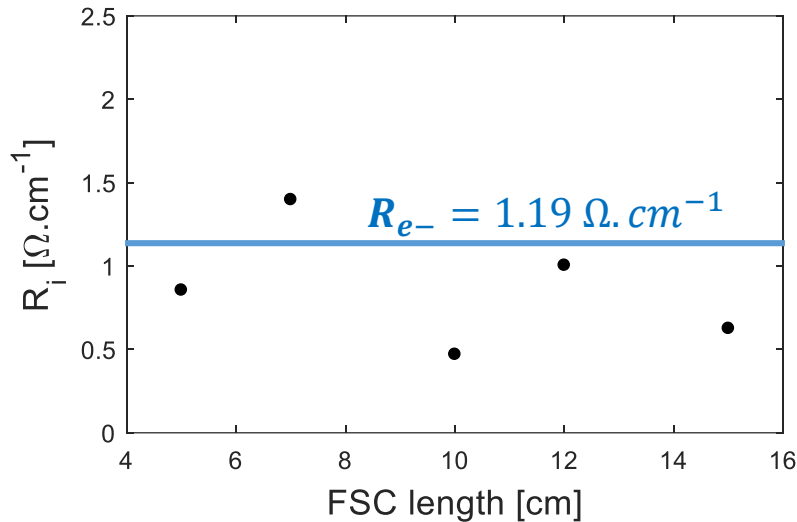


3. SC modeling – Characterization of hybrid FSCs [1]

Conventional SCs: electric resistance of the active material R_{e-} negligible compared to ionic resistance of the electrolyte $R_{ion} \rightarrow R_i = R_{ion}$



FSC1: pseudo-capacitors



FSC2 and FSC3: EDLCs

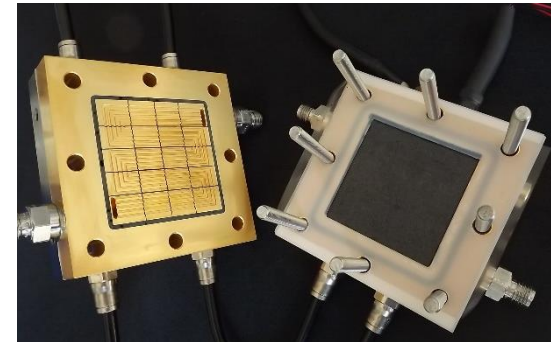
	FSC2	FSC3
R_i [$\Omega \cdot \text{cm}^{-1}$]	3.7	4.5
R_{e-} [$\Omega \cdot \text{cm}^{-1}$]	2.5	4.7



\rightarrow **Hybrid FSC:** R_i governed by the electron conducting phase of the electrode rather than by the ion conductive electrolyte (opposite to classical SCs) $\rightarrow R_i = R_{e-}$

4. Modeling of electrochemical generators → Polymer Electrolyte Membrane Fuel Cells (PEMFCs)

- Generalities
 - ✓ Operation principle
 - ✓ Cell Impedance
- Membrane-Electrode Assembly (MEA) - Electrode EECs
 - ✓ Blocked-electrode model
 - ✓ *In operando* models (thick and thin electrodes)
- Focus on O₂ diffusion impedance
 - ✓ Identification of diffusion limiting layer
 - ✓ Difficulties at low frequencies
 - ✓ Example of alternative to Warburg impedance
- Application to PEMFC ageing analyses



Hype taxi in Paris (2015)

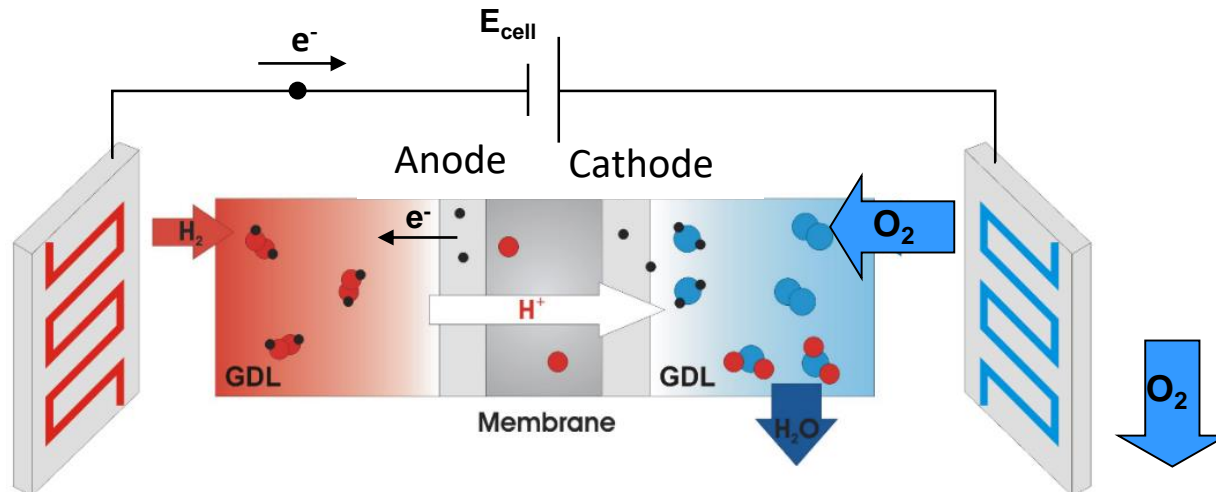


Alstom Coradia iLint in Germany (2018)

4. PEMFC modeling – Operation principle

□ Membrane – Electrode Assembly (MEA)

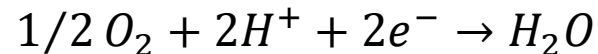
- Assembly of various media with different geometrical and physical properties
- Different coupled transport phenomena (charge, mass, heat)



Hydrogen oxidation reaction (HOR)

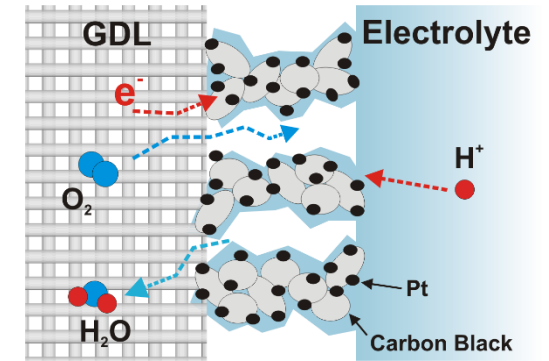


Oxygen reduction reaction (ORR)

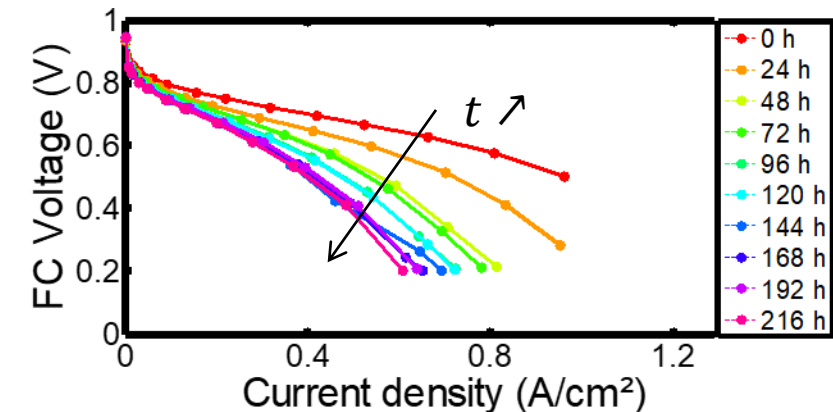


Global reaction: $H_2 + 1/2 O_2 \rightarrow H_2O + \text{Heat}$

Porous electrodes (cathode)

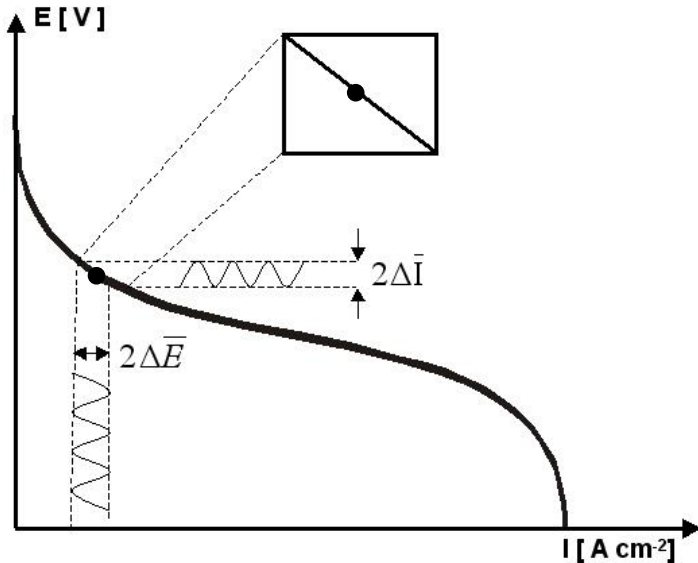


Polarization curve



4. PEMFC modeling – Cell impedance

EIS measurement and spectrum (Nyquist plot)

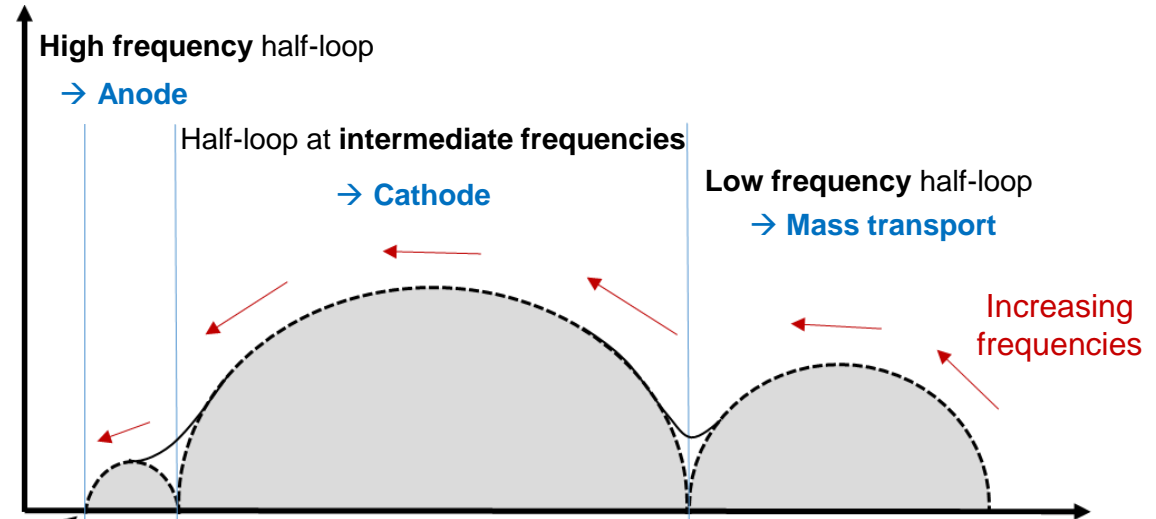


Conditions : linear and stationary system

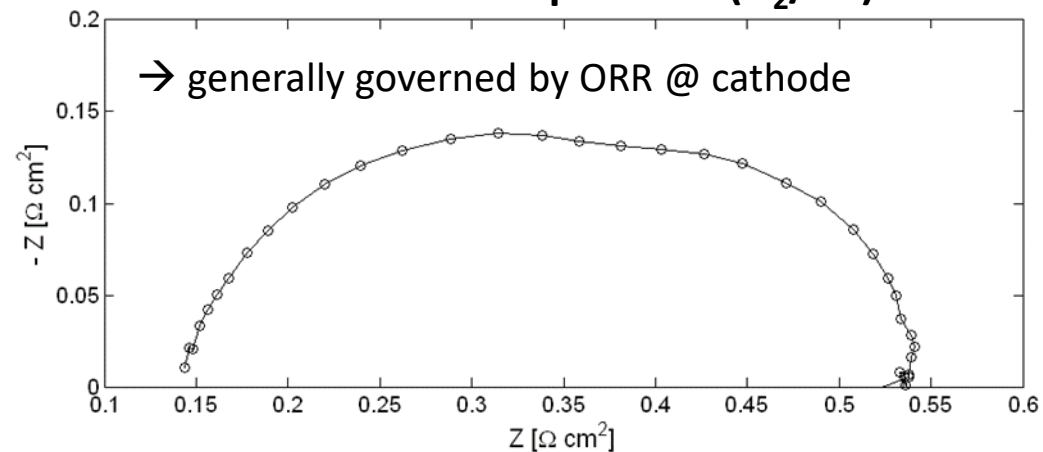
- Applying AC signals with small amplitudes $\Delta E/\Delta I$
- Approximately linear behavior if [1]:

$$\Delta \bar{E} < E_T = \frac{RT}{F} \approx 29 \text{ mV} \quad (\text{at } 60^\circ\text{C})$$

Ideal FC spectrum



Real PEMFC spectrum (H₂/air)



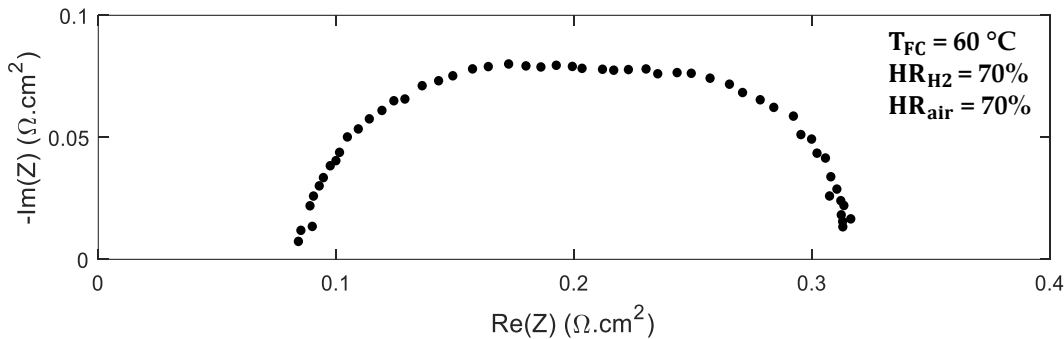
$RH_{air} = 76\%$
 $RH_{H_2} = 0\%$
 $\langle j_{cell} \rangle_t = 0.5 \text{ A cm}^{-2}$

4. PEMFC modeling – Cell impedance

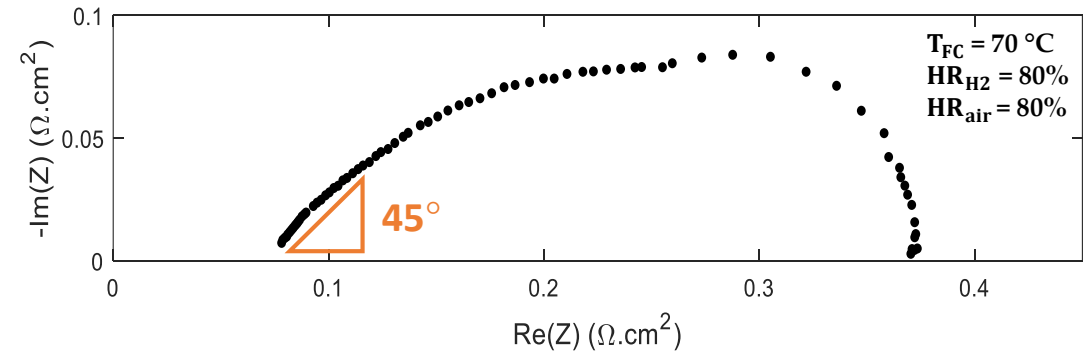
Real PEMFC spectra

- Impedance spectra of two different MEAs and cells (PEMFC under H₂/air @ 0.5 A/cm², f = 20 mHz-10 kHz)

Cell A (CCM Solvicore – thin electrode)

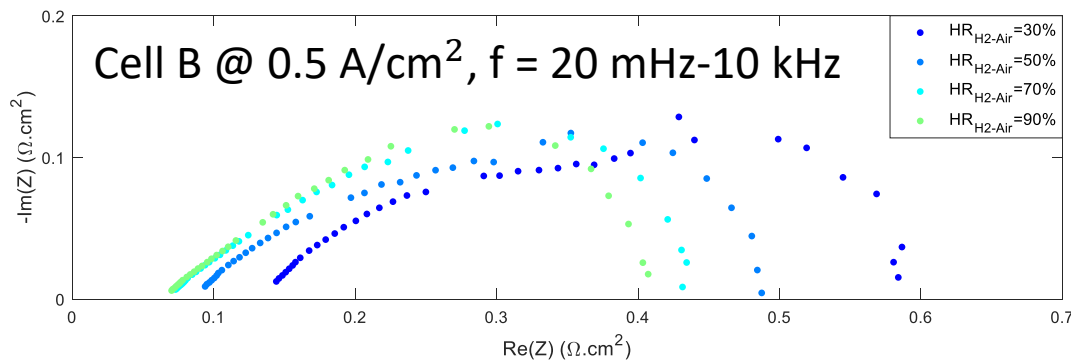


Cell B (hot-pressed GDE – thick electrode)

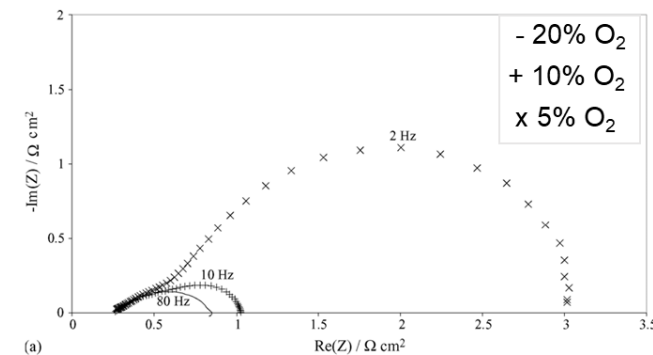


- Impedance spectra for different operating conditions (PEMFC under H₂/air)

Impact of relative humidity



Impact of oxygen supply [1]



→ Appropriate impedance model (EEC) strongly depends of the MEA composition and FC operating conditions.

4. PEMFC modeling – Electrode EECs

Blocked electrode (H₂/N₂ operation)

Nyquist plot [1]

- At low frequencies: steep increase of the imaginary part approaching a **vertical line** associated with a **purely capacitive behavior**
- At high frequencies: **straight line at 45°** associated with **proton conduction within the CCL**

EEC : Transmission Line Model (TLM) [1-2]

PEMFC impedance

$$Z_{PEMFC}(\omega) = R_{hf} + Z_{TLM}(\omega) = R_{hf} + \sqrt{\frac{R_{ion}}{i\omega C_{dl}}} \coth(\sqrt{i\omega R_{ion} C_{dl}})$$

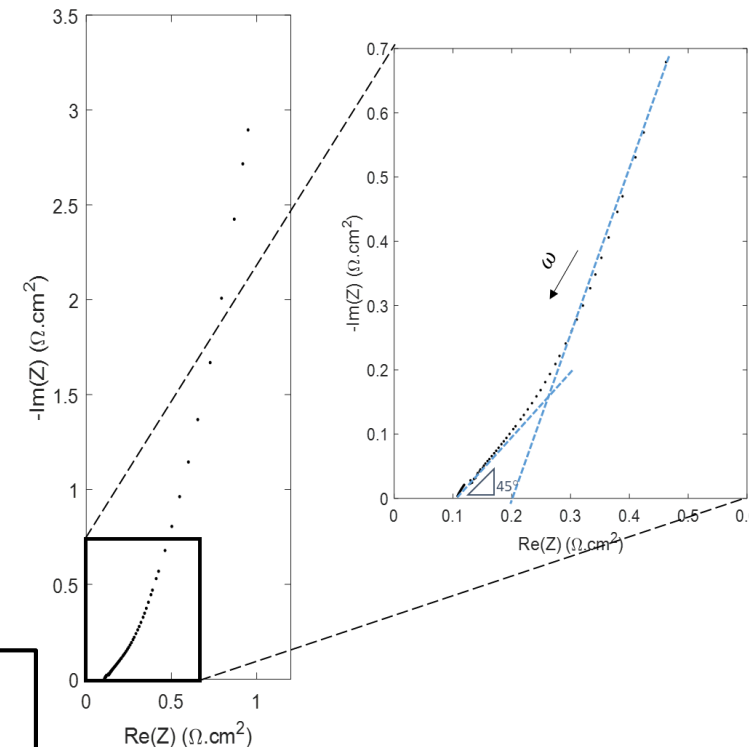
R_{ion} : ionomer resistance in the CCL

C_{dl} : double-layer capacitance

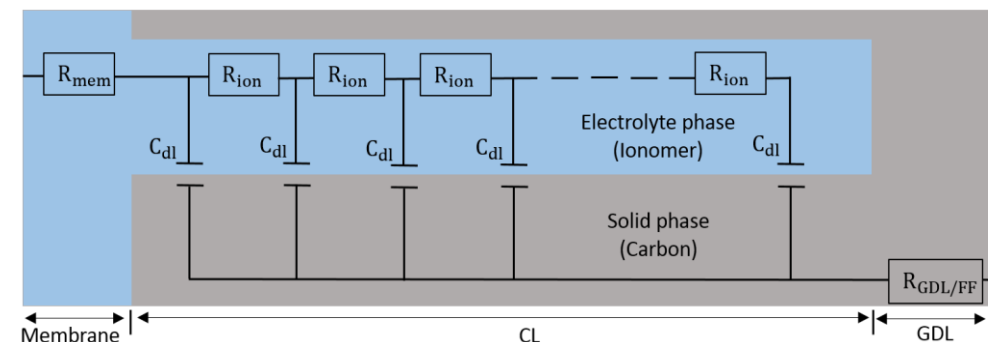
R_{mem} : ionomer resistance in the membrane

$R_{GDL/FF}$: electronic resistance in the GDL/FF

$R_{hf} = R_{GDL/FF} + R_{mem}$: high-frequency resistance

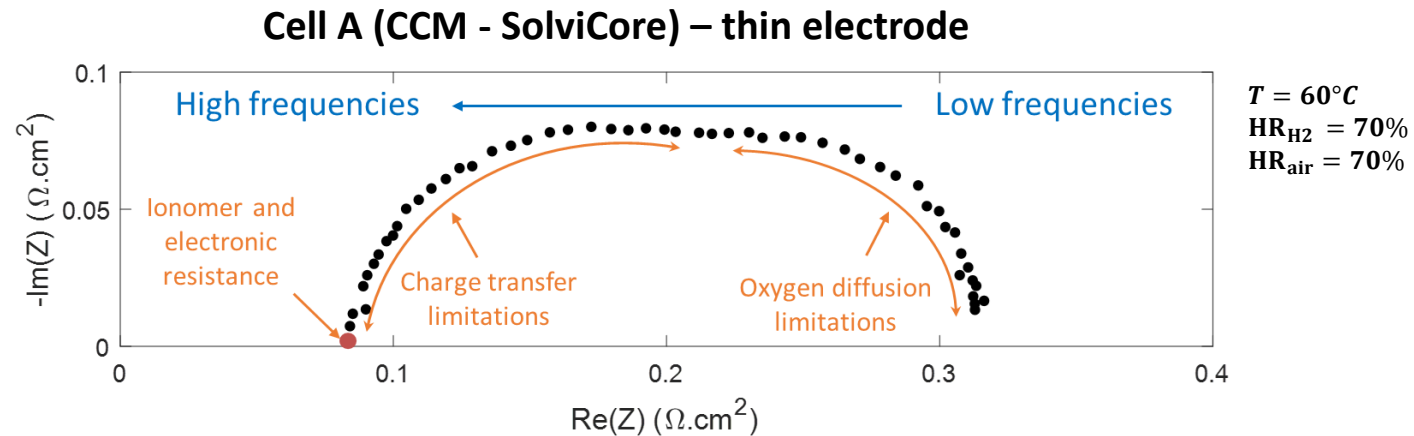


Cell B
 $T_{FC} = 70\text{ °C}$
 $RH_{H_2} = 80\%$
 $RH_{N_2} = 80\%$
 $U = 0.5V$
 $f = 1\text{ Hz} - 10\text{ kHz}$



4. PEMFC modeling – Electrode EECs

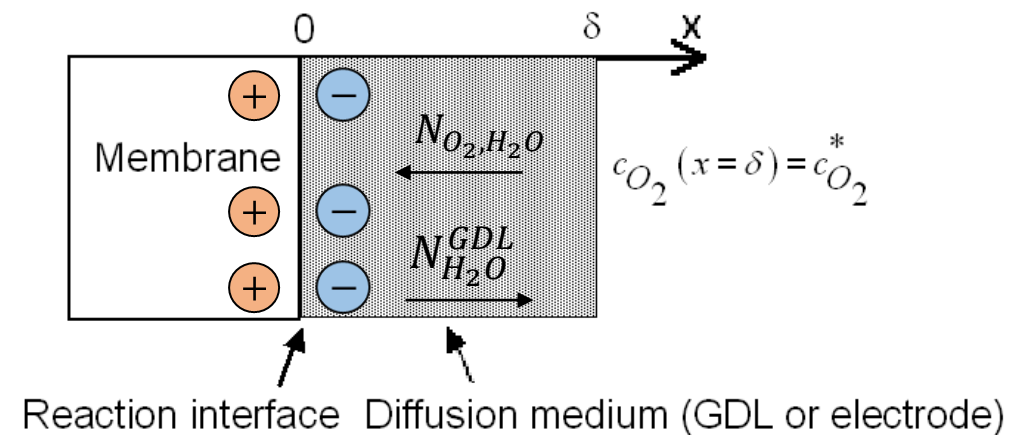
□ H₂/air operation (in operando) – thin electrodes [1]



EEC : Randles circuit [2,3]

Hypotheses

- **Surface reaction**
- Isothermal and isobaric active layer (AL)
- Cathode place of water production: ohmic drops due to electron and ion conduction in the GDL and AL neglected
- 1D O₂ transport by binary diffusion only (Fick diffusion laws)
- Constant O₂ concentration at the GDL/channel interface
- Cathode limiting electrode – anode neglected



[1] S. Touhami et al, *J. Electrochem. Soc.* (2019)

[2] Randles, *Discuss. Faraday, Soc.* (1947)

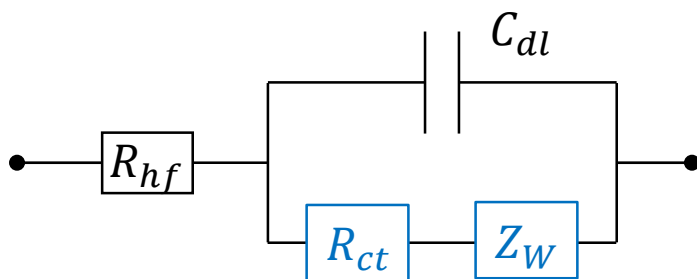
[3] Warburg, *Ann. Phys. Chem.* (1899)

4. PEMFC modeling – Electrode EECs

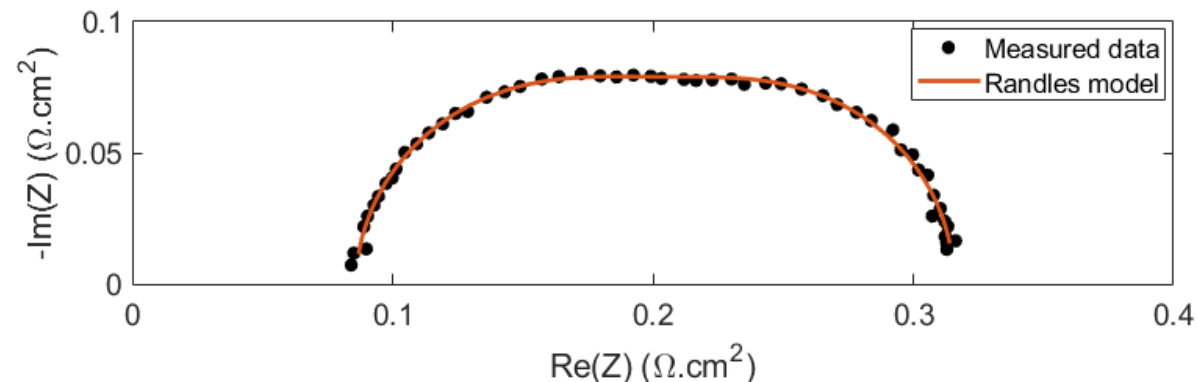
□ H₂/air operation (in operando) – thin electrodes [1]

Randles circuit [2] (anode neglected)

- PEMFC EEC → Interfacial (thin) electrodes



Cell A (CCM - SolviCore) – thin electrode



- PEMFC impedance

$$Z_{PEMFC}(\omega) = R_{hf} + Z_{Randles} = R_{hf} + \left(\frac{1}{R_{ct} + Z_w(\omega)} + i\omega C_{dl} \right)^{-1}$$

With $R_{ct} = \frac{b}{j}$ - charge transfer resistance } Electrode reaction kinetics (here : ORR at the cathode)

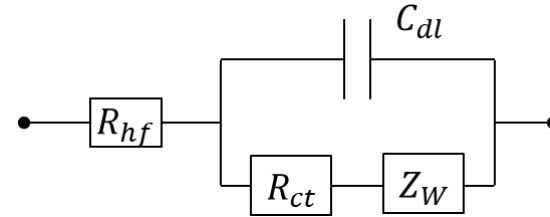
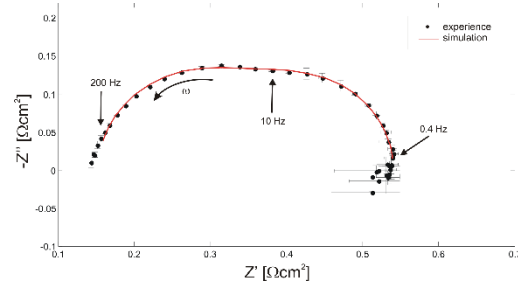
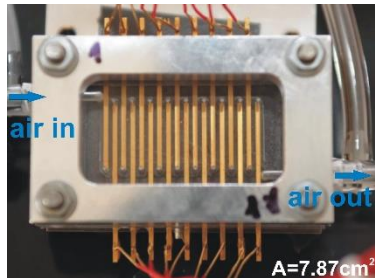
C_{dl} - double layer capacitance

$Z_w(R_d, \tau_d) = R_d \frac{\tanh \sqrt{i\omega\tau_d}}{\sqrt{i\omega\tau_d}}$ - O₂ diffusion impedance (Warburg element [3])

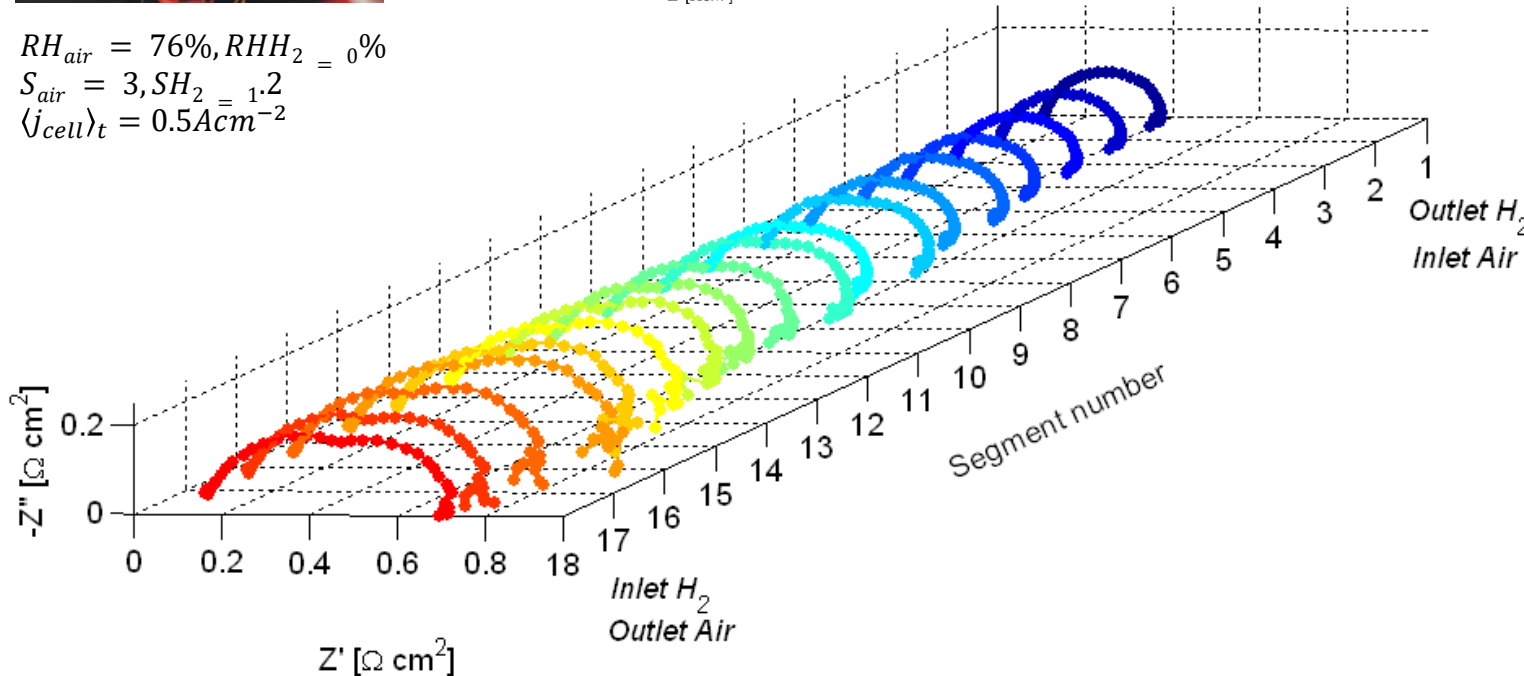
4. PEMFC modeling – Electrode EECs

□ H₂/air operation (in operando) – thin electrodes

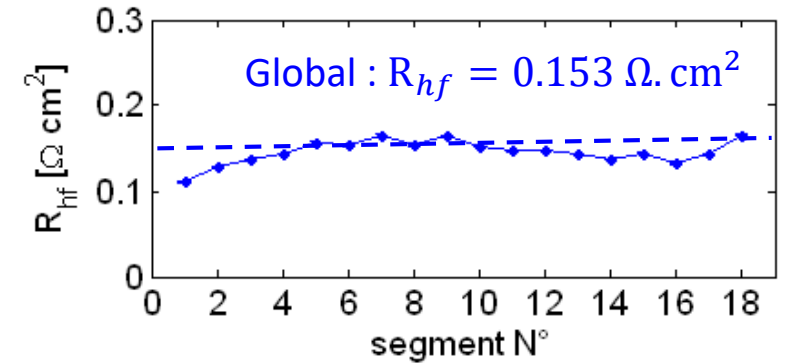
Application : local EIS analysis – Randles circuit [1]



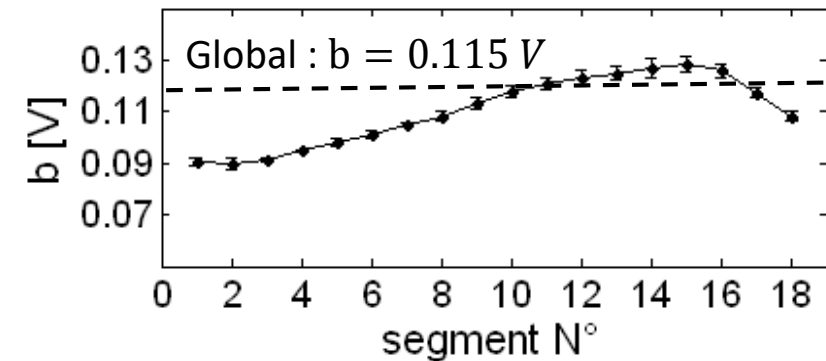
$RH_{air} = 76\%, RH_{H_2} = 0\%$
 $S_{air} = 3, SH_2 = 1.2$
 $\langle j_{cell} \rangle_t = 0.5 A cm^{-2}$



High frequency resistance R_{hf}



Tafel slope $b = R_{ct} \times j$



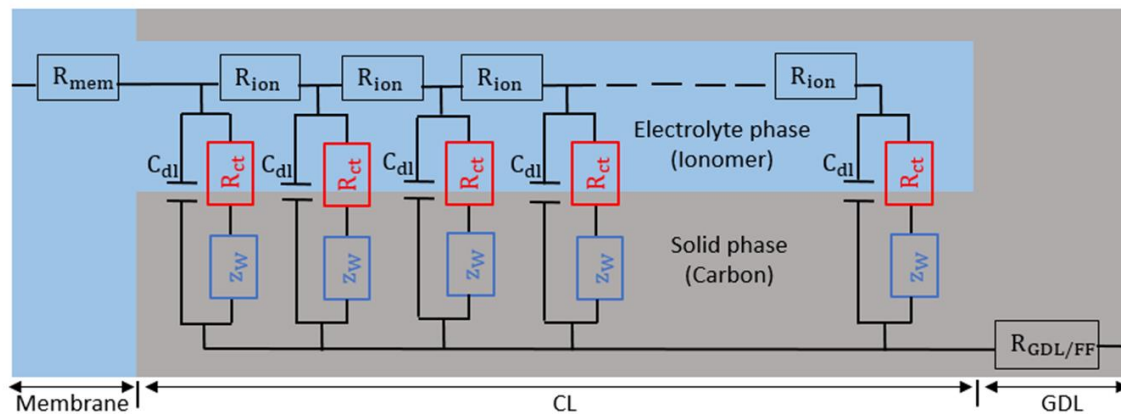
[1] Mainka et al., J. Pow. Sources (2014)

4. PEMFC modeling – Electrode EECs

□ H₂/air operation (in operando) – thick electrodes [1]

Modified Transmission Line Model (M-TLM) circuit with oxygen transport limitations [1-2]

▪ PEMFC EEC → thick electrodes

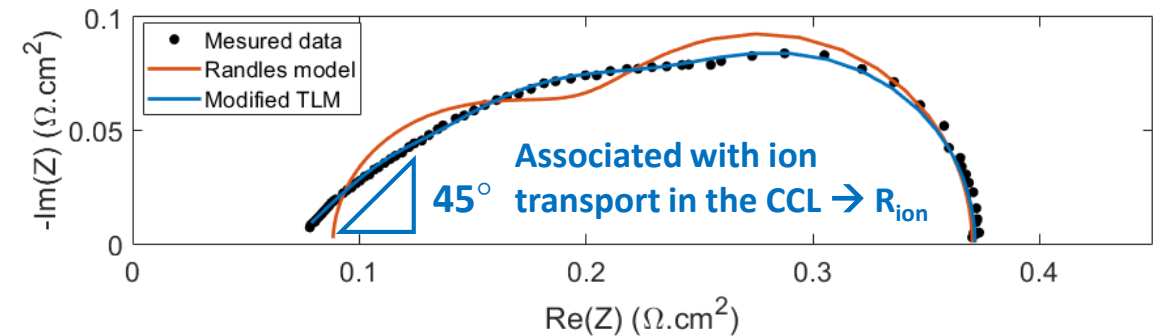


▪ PEMFC impedance (anode neglected)

$$Z_{\text{Cell}}(\omega) = R_{hf} + Z_{\text{M-TLM}}(\omega)$$

$$= R_{hf} + \frac{\sqrt{R_{ion}}}{\sqrt{i\omega C_{dl} + (1/(R_{ct} + Z_W(\omega)))}} \coth \left(\sqrt{iR_{ion} C_{dl} + (R_{ion}/(R_{ct} + Z_W(\omega)))} \right)$$

Cell B (hot-pressed GDE) – thick electrode



- No satisfying fit quality with Randles EEC
- Good fit quality with the modified TLM
→ More adapted for thick electrodes (45° slope)

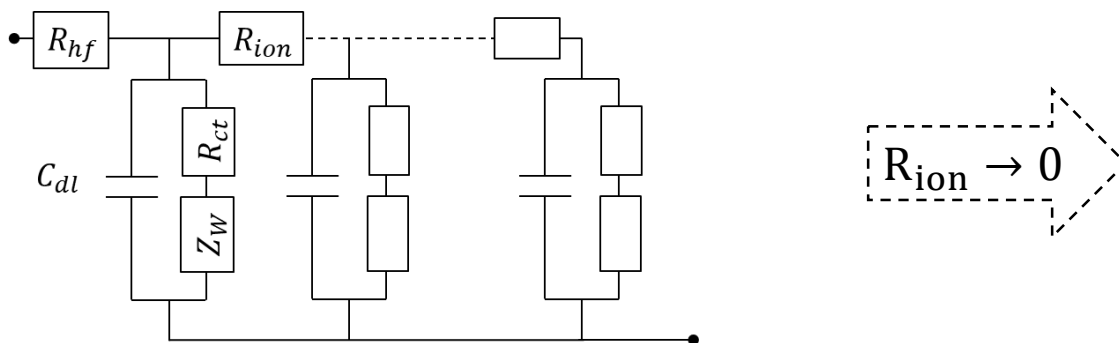
[1] S. Touhami et al, *J. Electrochem. Soc.* (2019)
[2] S. Cruz-Manzov and R. Chen, *J. electroanal. Chem.* (2013)

4. PEMFC modeling – Electrode EECs

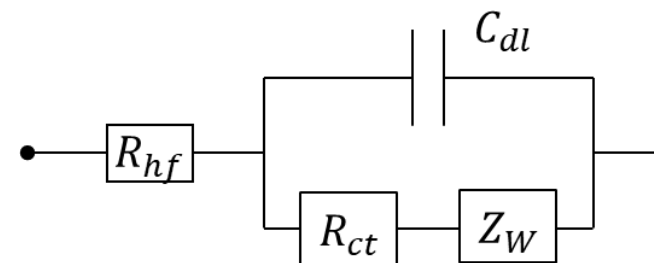
□ H₂/air operation (in operando) – from thick to thin electrodes [1]

▪ PEMFC EEC

M-TLM EEC → thick electrodes



Randles EEC → interfacial (thin) electrodes

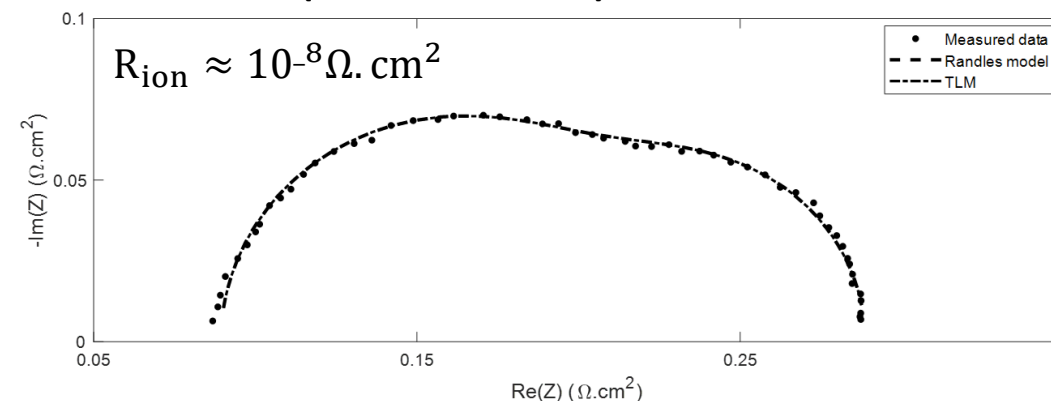


▪ PEMFC impedance (anode neglected) : asymptotic study for low values of R_{ion}

$$\lim_{R_{ion} \rightarrow 0} Z_{M-TLM}(\omega) = \frac{1}{\frac{1}{R_{ct} + Z_W} + i\omega C_{dl}} = Z_{Randles}(\omega)$$

➔ Modified TLM as a generalization of Randles EEC (thin and thick electrodes)

Cell A (CCM - SolviCore) – thin electrode



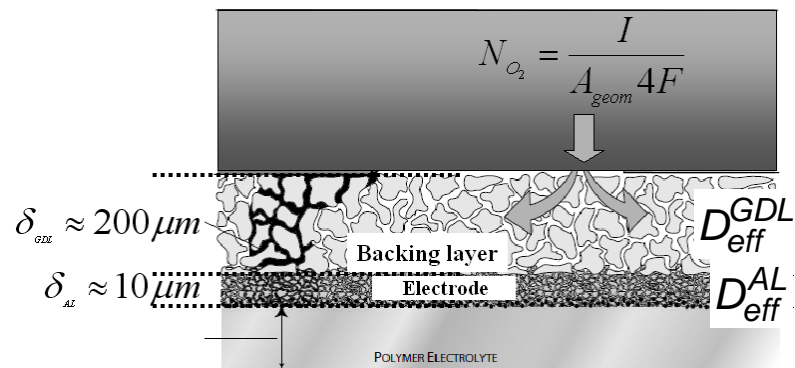
[1] S. Touhami et al, *J. Electrochem. Soc.* (2019)

4. PEMFC modeling – Focus on O₂ diffusion impedance

Application: O₂ diffusion limiting layer identification [1-3]

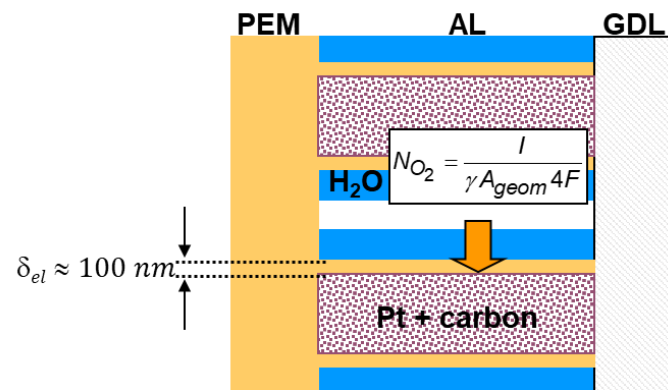
Three stages of O₂ diffusion

Pores of GDL and CCL → Gas diffusion



M. Reum, Ph.D thesis, 2008

Ionomer film in CCL → Liquid diffusion



→ Which layer is at the origin of the oxygen transport impedance?

EIS diffusion parameters

From the Warburg diffusion impedance: $Z_w(R_d, \tau_d) = R_d \frac{\tanh \sqrt{i\omega\tau_d}}{\sqrt{i\omega\tau_d}}$

Diffusion resistance: $R_d = \lim_{\omega \rightarrow 0} Z_w = \frac{b\delta}{4FD_{eff}\langle c_{O_2}(0) \rangle_t}$

Characteristic diffusion time: $\tau_d = \frac{\delta^2}{D_{eff}}$

Characteristic diffusion length:

$$\delta = \left(1 + \frac{R_{ct}}{R_d} \right) \times \frac{j_{cell} \tau}{4FC_{O_2}}$$

Effective diffusion coefficient:

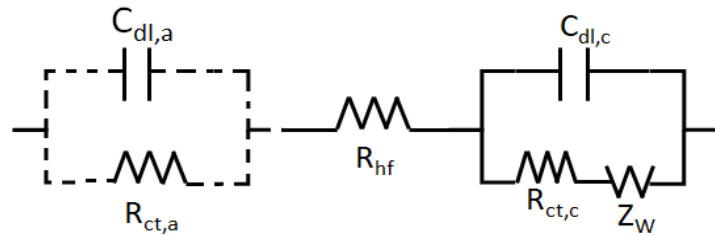
$$D_{eff} = \frac{\delta^2}{\tau_d}$$

4. PEMFC modeling – Focus on O₂ diffusion impedance

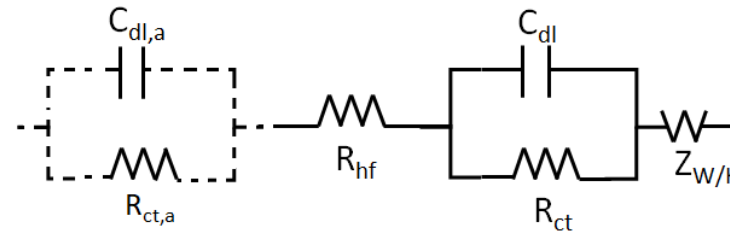
Application: O₂ diffusion limiting layer identification [1,2]

- PEMFC EECs (with anode)

Diffusion impedance in **CCL** – Randles EEC



Diffusion impedance in **GDL** – Modified Randles



- PEMFC impedance (with anode)

Diffusion impedance in CCL:

$$Z_{cell_CCL} = Z_{anode} + Z_{Randles} = \left(\frac{1}{R_{ct,a}} + i\omega C_{dl,a} \right)^{-1} + R_{hf} + \left(\frac{1}{R_{ct} + Z_w} + i\omega C_{dl} \right)^{-1}$$

Warburg diffusion impedance: $Z_w = R_d \frac{\tanh \sqrt{i\omega\tau_d}}{\sqrt{i\omega\tau_d}}$

Diffusion impedance in GDL:

$$Z_{cell_GDL} = Z_{anode} + Z_{M-Randles} = \left(\frac{1}{R_{ct,a}} + i\omega C_{dl,a} \right)^{-1} + R_{hf} + \left(\frac{1}{R_{ct}} + i\omega C_{dl} \right)^{-1} + Z_{w/K}$$

Warburg or Kulikovsky diffusion impedance [3]: $Z_K = \frac{Z_w}{1 + i\omega C_{dl} R_{ct}}$

[1] Aït-Idir et al., IEEE (2021)

[2] S. Touhami et al, J. Electrochem. Soc. (2019)

[3] A. Kulikovsky, Electrochem. Comm. (2017)

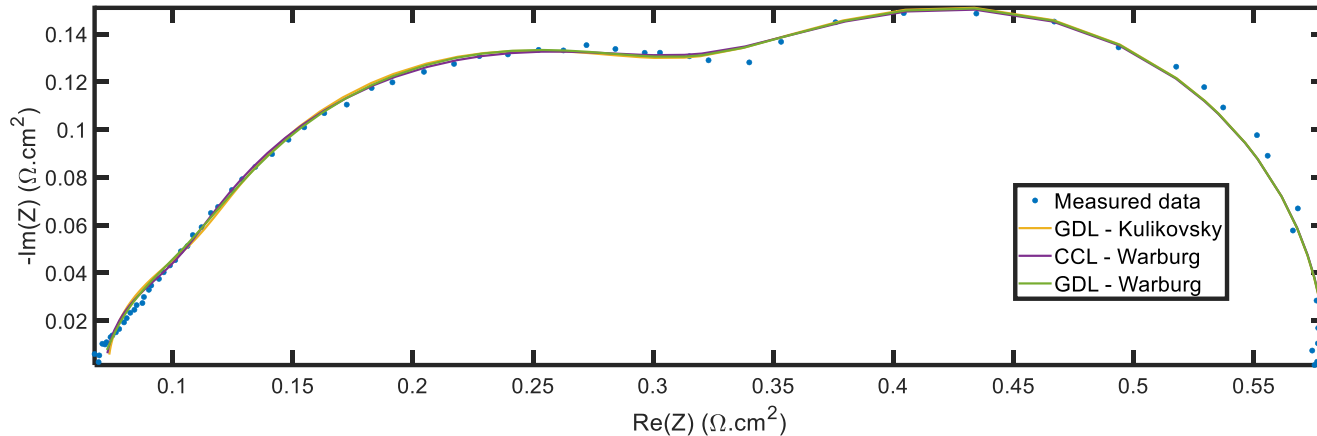
4. PEMFC modeling – Focus on O₂ diffusion impedance

Application: O₂ diffusion limiting layer identification [1,2]

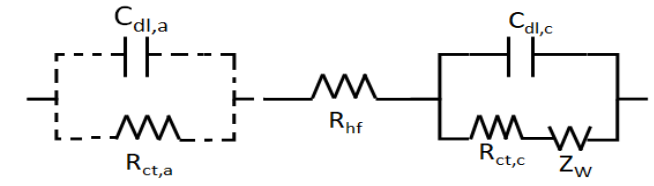
- PEMFC impedance spectrum (H₂/air) @ 0.5 A/cm², f = 20 mHz-10 kHz



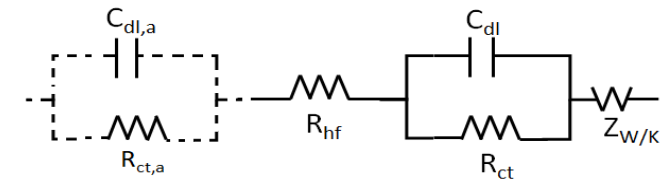
T_{FC} = 60 °C
 HR_{H₂,air} = 50%
 S_{air} = 3, S_{H₂} = 1,2



Randles EEC – Z_W in CCL



M-Randles EEC – Z_W/Z_K in GDL

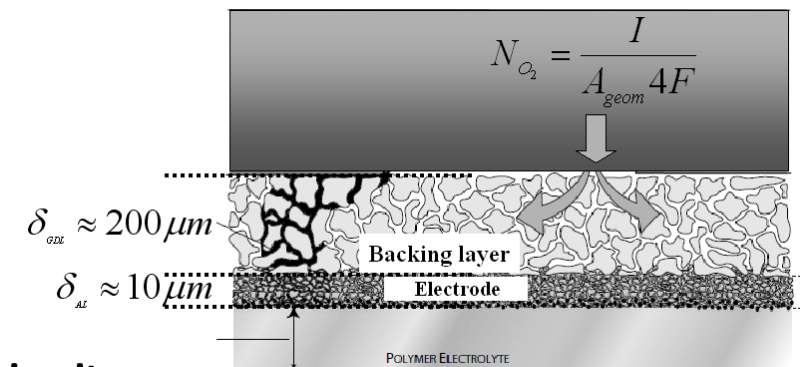


Identified diffusion parameters

Model	Warburg CCL	Warburg GDL	Kulikovsky GDL
δ [μm]	308	359	302
D _{eff} [10 ⁻⁶ m ² .s ⁻¹]	1.35	1.92	1.25

→ δ and D_{eff} of the order gaseous O₂ diffusion through the GDL for all EECs

- GDL main contribution to oxygen transport impedance
- In contradiction with Randles circuit (interfacial electrode) → **Modified Randles circuit**

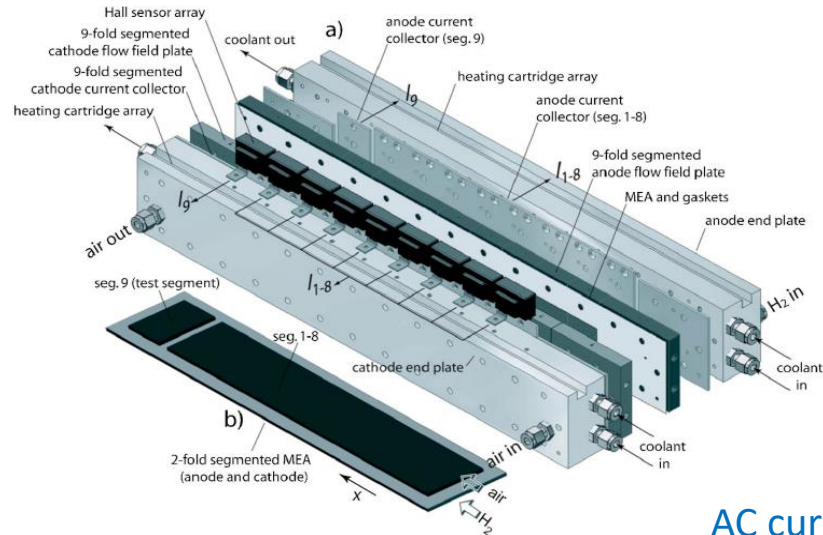


M. Reum, Ph.D thesis, 2008

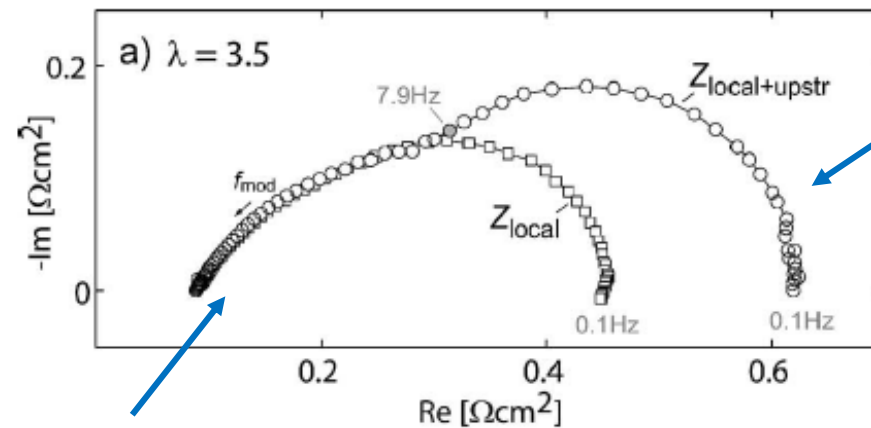
4. PEMFC modeling – Focus on O₂ diffusion impedance

□ Difficulties with EIS at low frequencies

- **Oxygen oscillation propagation** along the gas channels → Measuring artefacts [1-3]



Impedance spectra of the last segment



AC current applied to the last segment

- **Limits of Warburg diffusion impedance: constant oxygen concentration** along the GDL/flow field interface [2,4] and oxygen transport by **1D Fickian diffusion** instead of **Stefan-Maxwell equations** [5 -7]

[1] I. A. Schneider et al., J. Electrochem. Soc. 154 (2007)

[2] G. Maranzana et al., Electrochimica Acta 83 (2012)

[3] P. Guillemet et al., ECS Transactions 50 (2012)

[4] J. Mainka et al., J. Electrochem. Soc. 157 (2010)

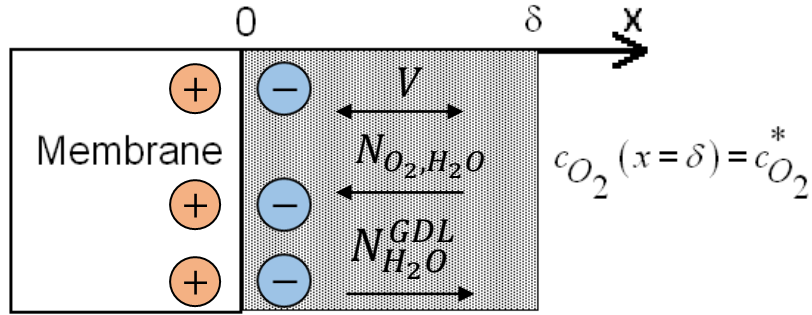
[5] J. Mainka et al., Fuel cells 12 (2012)

[6] T.E. Springer et al., J. Electrochem. Soc. 138 (1991)

[7] O. Lottin et al., Int. J. Therm. Sci. 48 (2009)

4. PEMFC modeling – Focus on O₂ diffusion impedance

Example of alternative to Warburg impedance: **1D convecto-diffusive impedance [1]**



Reaction interface Diffusion medium (GDL or electrode)

Hypothesis: convective flux through the GDL (vapor evacuation)

$$N_{H_2O}^{GDL} = \alpha N_{H_2O}^{prod}$$

with α - **water transport coefficient**

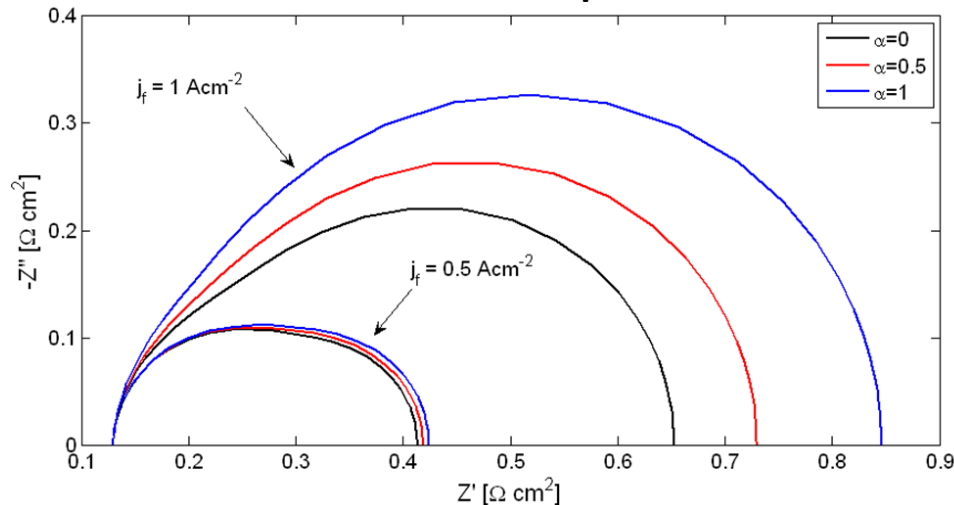
$\alpha = 0$: convection and diffusion in the same direction

$\alpha = 0.5$: O₂ diffusion only

$\alpha = 1$: convection opposite to diffusion

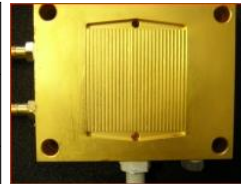
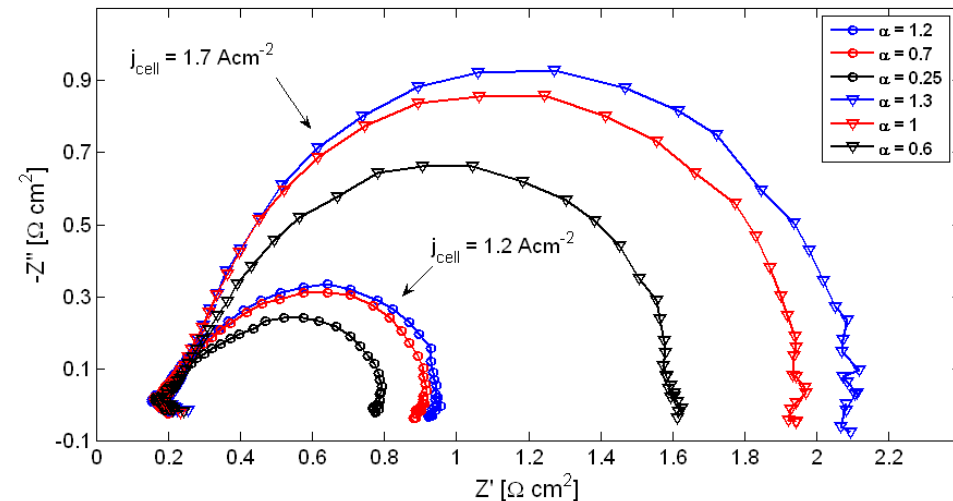
$$Z_{conv,diff}^{1D}(\delta, D_{eff}, V) \quad \text{with } V = (2\alpha - 1) \frac{j_f RT}{4F P} - \text{convective flux velocity}$$

Simulated PEMFC spectra



Model conditions	
R _{hf} [Ωcm ²]	0.13
R _{ct} [Ωcm ²]	0.19
C _{dl} [Fcm ⁻²]	0.02
δ [μm]	200
D _{eff} [m ² s ⁻¹]	10 ⁻⁶
j _f [Acm ⁻²]	0.5
T _{cell} [°C]	60
P [bar]	1

Experimental PEMFC spectra (CCM - Johnson Matthey)

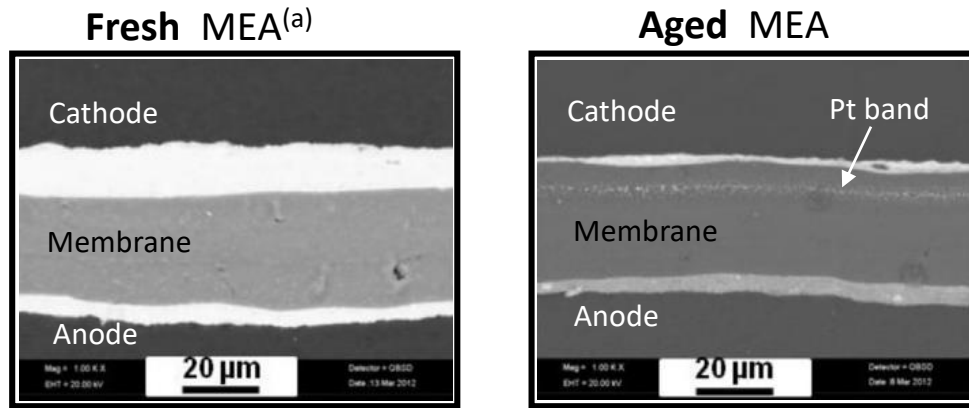


T_{FC} = 60 °C
 HR_{H₂,air} = 60%
 S_{air} = 3, S_{H₂} = 1.4

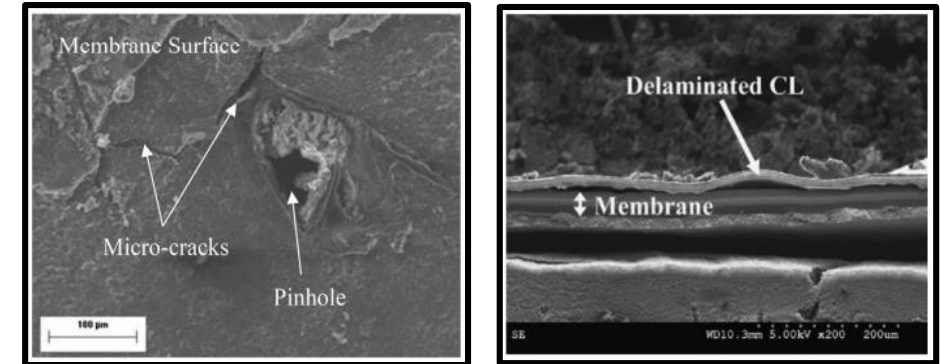
4. PEMFC modeling – Application to PEMFC ageing

□ PEMFC ageing

Active layer [1,2]



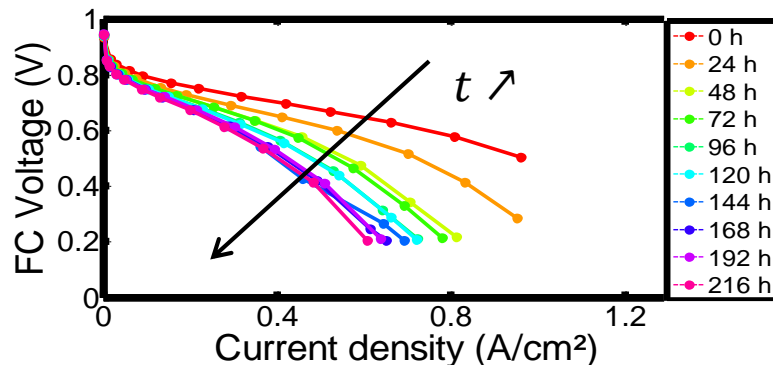
Membrane and membrane-electrode interface [3,4]



→ Carbon corrosion and Pt dissolution and redeposition

→ Chemical, mechanical and thermal stresses

→ Decrease of FC performance [5]



→ Insufficient lifetime to meet the DOE targets for 2050 [6]

Light duty vehicles: +8000 h

Heavy duty vehicles: +20000 h

[1] Durst et al., *Appl. Catalysis B : Env.* (2013)

[2] Macauley et al., *J. Electrochem. Soc.* (2018)

[3] Lim C et al., *J. Pow. Sources.* (2014)

[4] Kim S et al., *J. Pow. Sources.* (2008)

[5] S. Abbou, *Ph.D Thesis, UL* (2015)

[6] M. Whiston, *PNAS* (2019)

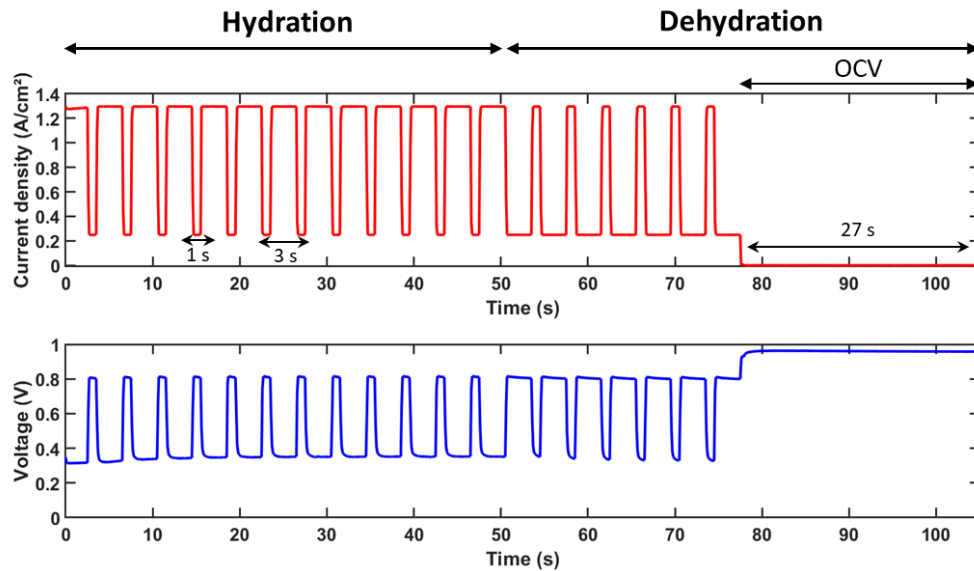
4. PEMFC modeling – Application to PEMFC ageing

Accelerated Stress Test (AST)

PEMFC durability testing under realistic conditions is expensive and tedious → AST

Applied AST [1]

- Potential cycling
- Open circuit voltage (OCV)
- (Load induced) humidity cycling [2 - 4]
(constant gas flow rates ↔ $I_{\max} = 1.3 \text{ A/cm}^2$)



[1] S. Touhami et al., J. Pow. Sources. (2021)
[2] Yeh-Hung Lai et al., J. Electrochem. Soc. (2018)

[3] T.C. Jao et al., Int. J. Hydrogen Energy. (2010)
[4] M. Marrony et al., J. Pow. Sources. (2008)

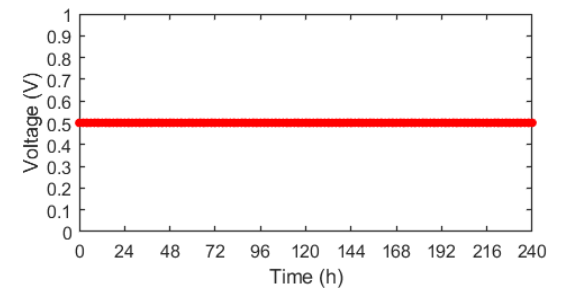
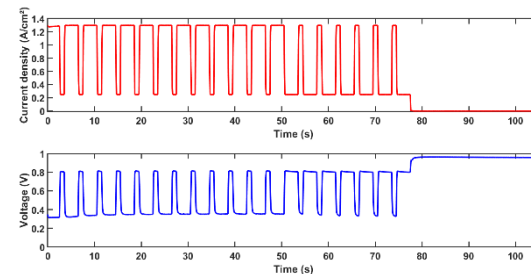
Experimental Protocol

Conditioning (2h)

Characterization stage

- Current and voltage @ 0.5 A/cm^2
- **EIS @ 0.5 A/cm^2**
- Polarization curve
- Cathode H_2 permeation
- Cathode CV @ 50 mV/s sweeping rate
- Anode H_2 permeation
- Anode CV @ 50 mV/s sweeping rate

AST/constant current during 24h



Characterization stage

4. PEMFC modeling – Application to PEMFC ageing

Experimental results [1] - EIS

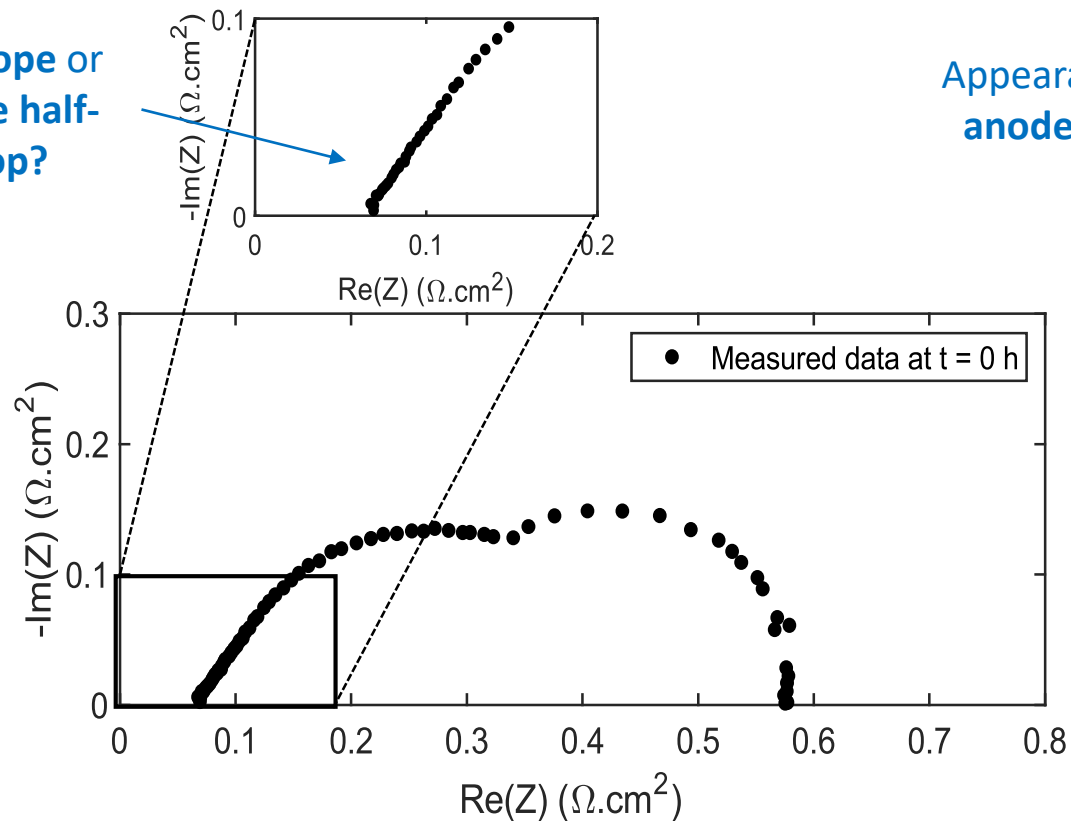
- PEMFC impedance spectra @ 0.5 A/cm² (IRD MEA) → BOL and AST



$T_{FC} = 60\text{ }^{\circ}\text{C}$
 $HR_{H_2,air} = 50\%$
 $S_{air} = 3, S_{H_2} = 1.2$

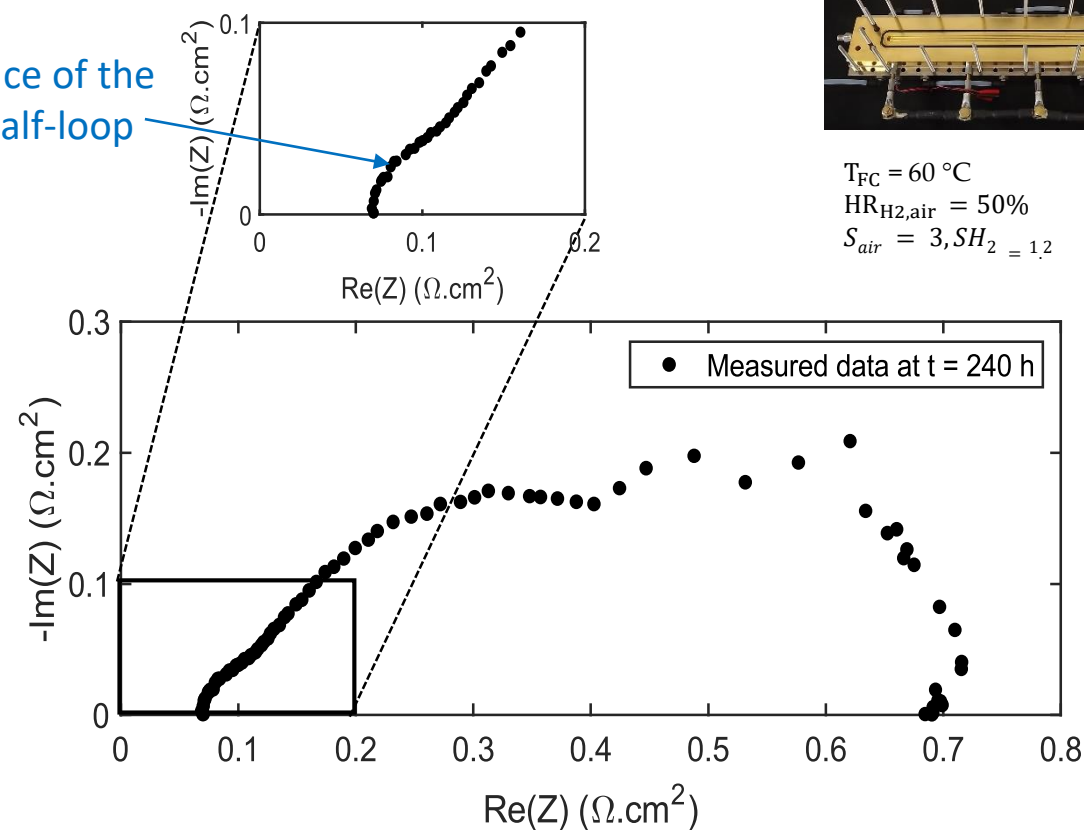
Beginning of life (BOL)

45° slope or anode half-loop?



End of AST

Appearance of the anode half-loop

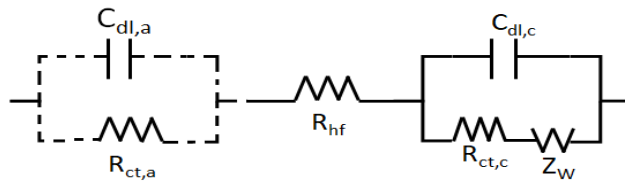


4. PEMFC modeling – Application to PEMFC ageing

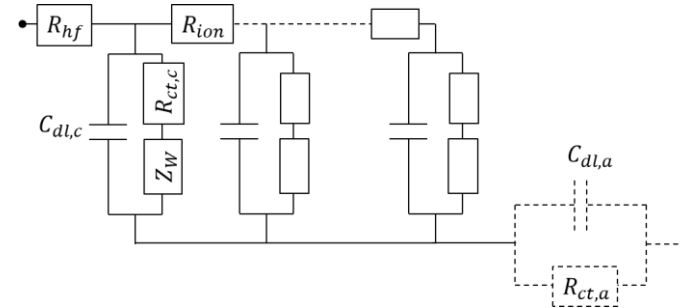
Experimental results [1] - EIS → BOL

- PEMFC EECs (with and without anode)

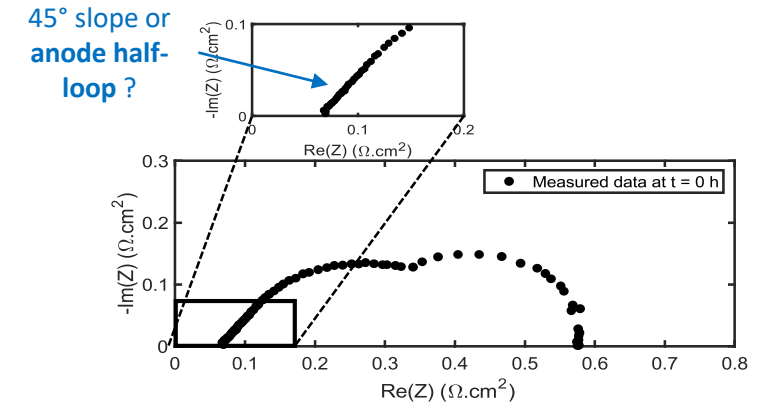
Randles EEC + Anode



M-TLM + Anode



Beginning of life (BOL)



- Identified parameters without and with anode

EEC	R_{hf} [$\Omega \cdot \text{cm}^2$]	τ [s]	R_d [$\Omega \cdot \text{cm}^2$]	R_{ion} [$\Omega \cdot \text{cm}^2$]	$C_{dl,c}$ [$\Omega \cdot \text{cm}^{-2}$]	$R_{ct,c}$ [$\Omega \cdot \text{cm}^2$]	$C_{dl,a}$ [$\Omega \cdot \text{cm}^{-2}$]	$R_{ct,a}$ [$\Omega \cdot \text{cm}^2$]
Randles (cathode only) Residue = 5.8×10^{-3}	0.084	0.122	0.286	-	0.015	0.209	-	-
M-TLM (cathode only) Residue = 1.7×10^{-3}	0.055	0.128	0.266	0.141	0.018	0.213	-	-
Randles + anode Residue = 1.1×10^{-3}	0.073	0.129	0.262	-	0.019	0.212	0.016	0.033
M-TLM + anode Residue = 1.1×10^{-3}	0.073	0.129	0.262	1×10^{-5}	0.019	0.212	0.016	0.033

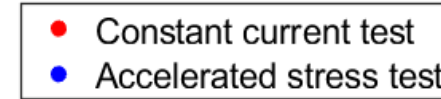
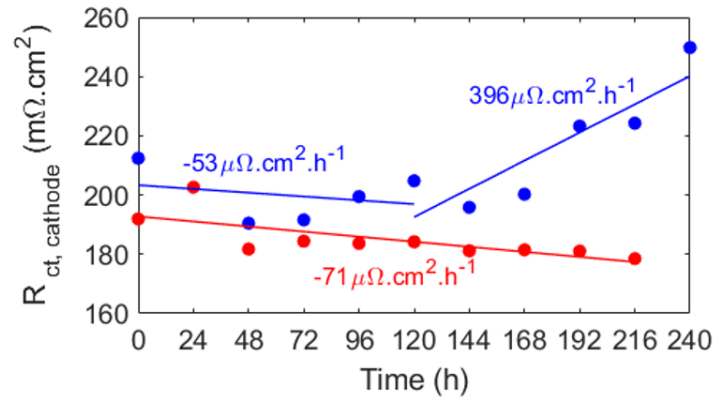
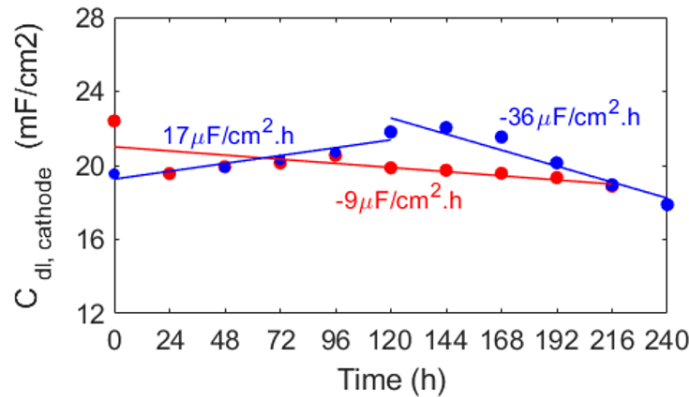
→ The anode must be taken into account no matter the EEC (Randles or M-TLM)

4. PEMFC modeling – Application to PEMFC ageing

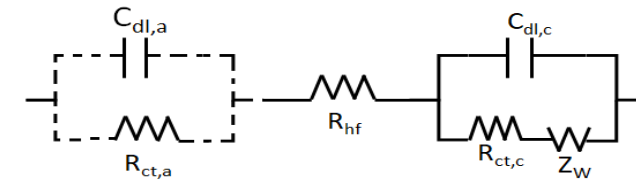
Experimental results [1] - EIS

- EIS measurements (@ 0.5 A/cm²) → electrode kinetic parameters: **constant current** vs. **AST**

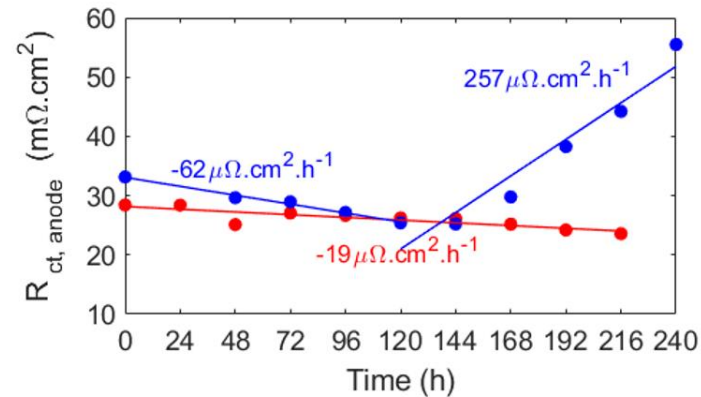
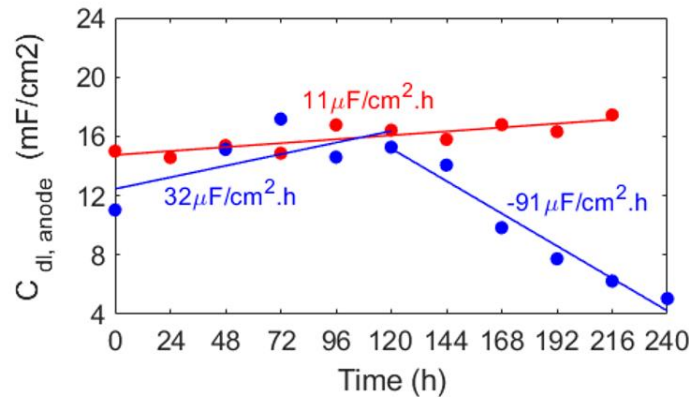
Cathode



Randles EEC + Anode



Anode

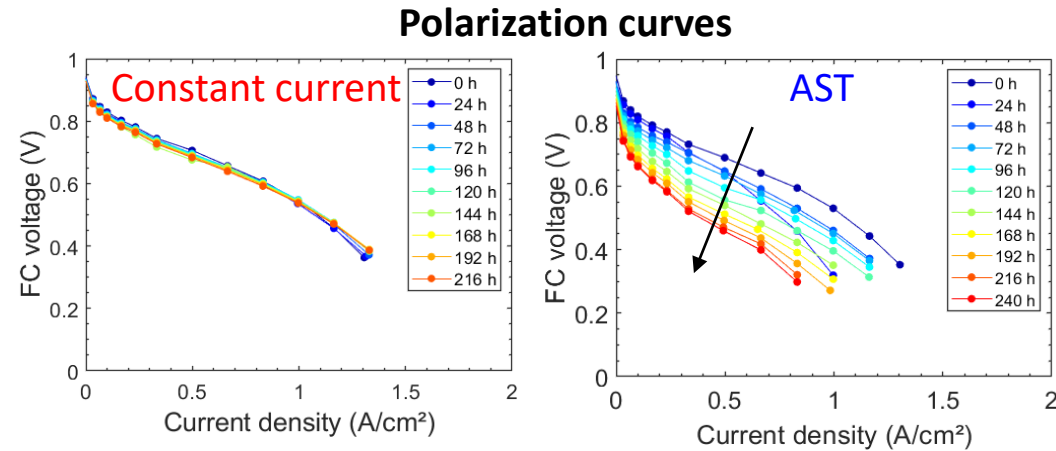
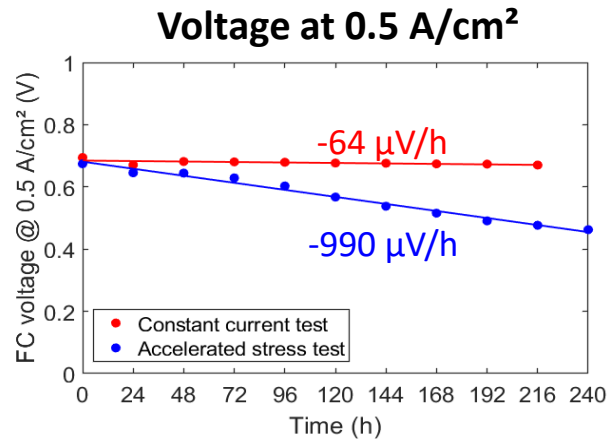


- Constant current:** no evidence of ageing
- AST:** ageing of both electrodes

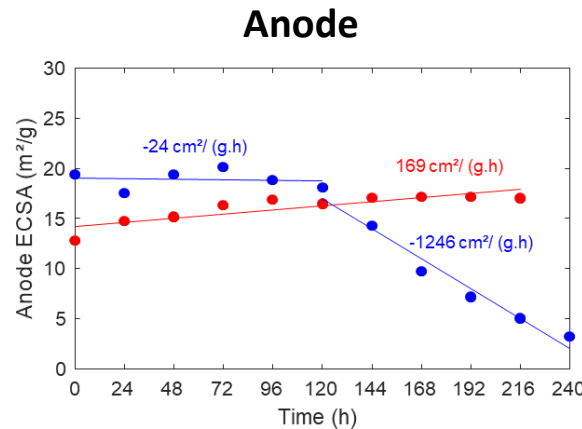
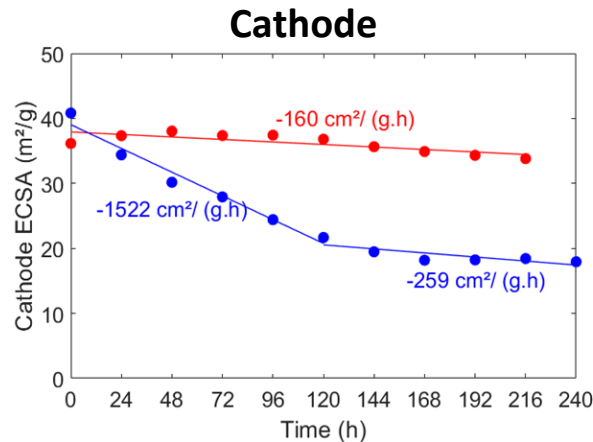
4. PEMFC modeling – Application to PEMFC ageing

Experimental results [1] - complementary analyses

- Cell performance: constant current vs. AST



- ElectroChemical Surface Area (ECSA): constant current vs. AST



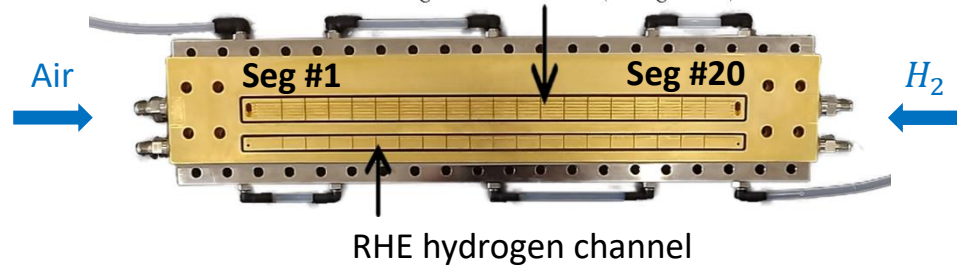
- Constant current: no evidence of ageing
- AST: ageing of both electrodes
Cathode : - 57%
Anode: -83%

→ Confirmation of results obtained by EIS

4. PEMFC modeling – Application to PEMFC ageing

□ Experimental results [1] - complementary analyses → AST

▪ Local electrode potentials



Cathode

Cathode local potentials cycled between 0.25V and OCV

→ **Electrochemical mechanisms** at the origin of cathode degradation [2]

Anode

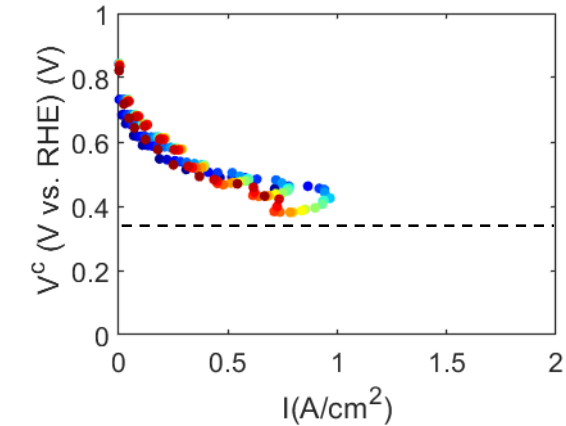
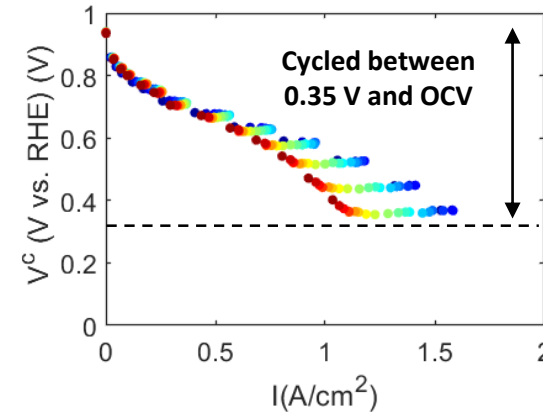
Anode local potentials below 0.2V

→ **Electrochemical mechanisms (high potentials)** are **not responsible** for anode degradation

BOL

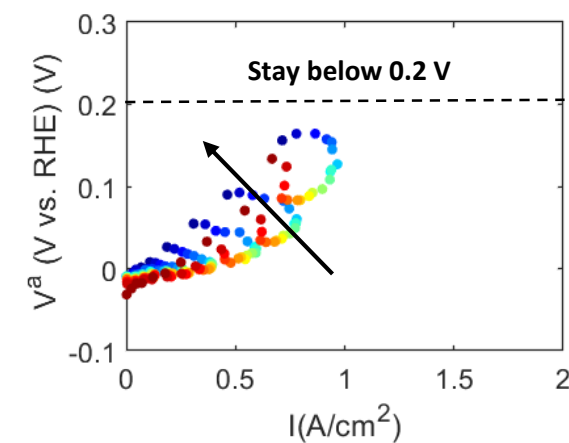
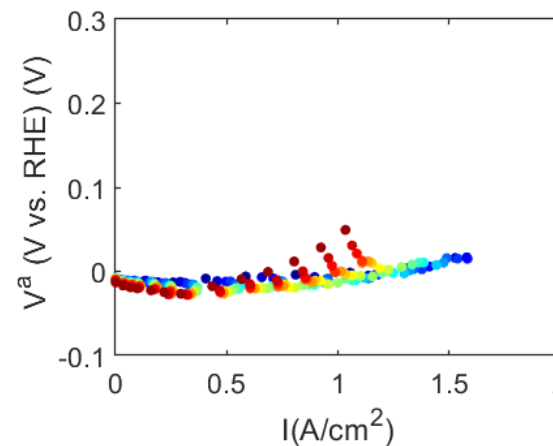
End of AST

Cathode



- Seg. 1
- Seg. 2
- Seg. 3
- Seg. 4
- Seg. 5
- Seg. 6
- Seg. 7
- Seg. 8
- Seg. 9
- Seg. 10
- Seg. 11
- Seg. 12
- Seg. 13
- Seg. 14
- Seg. 15
- Seg. 16
- Seg. 17
- Seg. 18
- Seg. 19
- Seg. 20

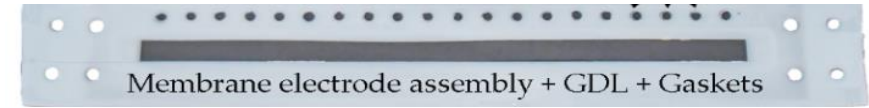
Anode



4. PEMFC modeling – Application to PEMFC ageing

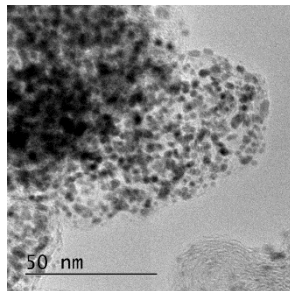
□ Experimental results [1] - complementary analyses → AST

- Post-mortem Transmission Electron Microscopy (TEM) @ 50 and 200k

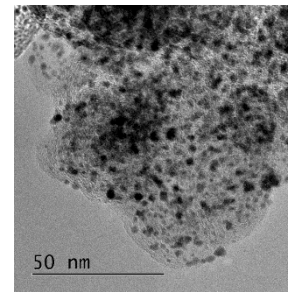


Pristine MEA

Anode



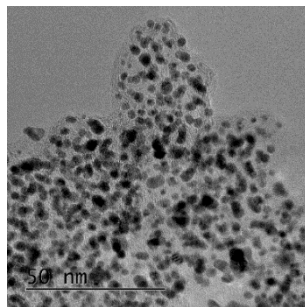
Cathode



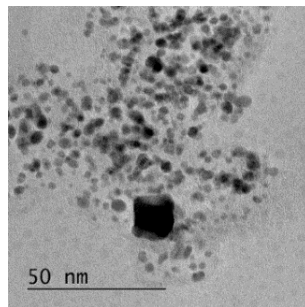
Aged MEA

Anode

Inlet

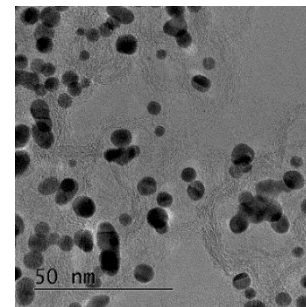


Outlet

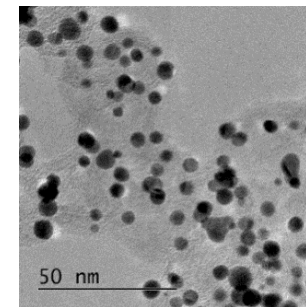


Cathode

Inlet



Outlet



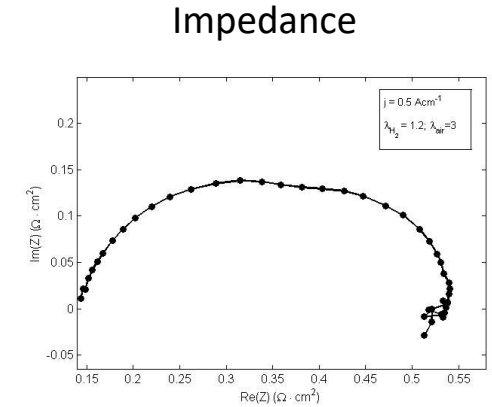
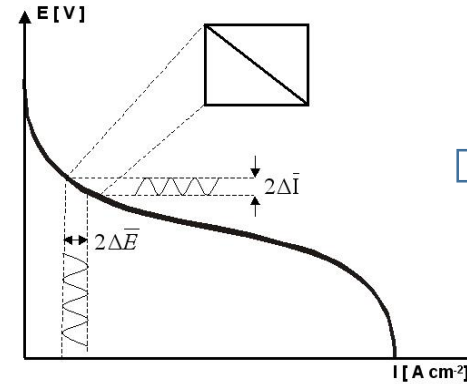
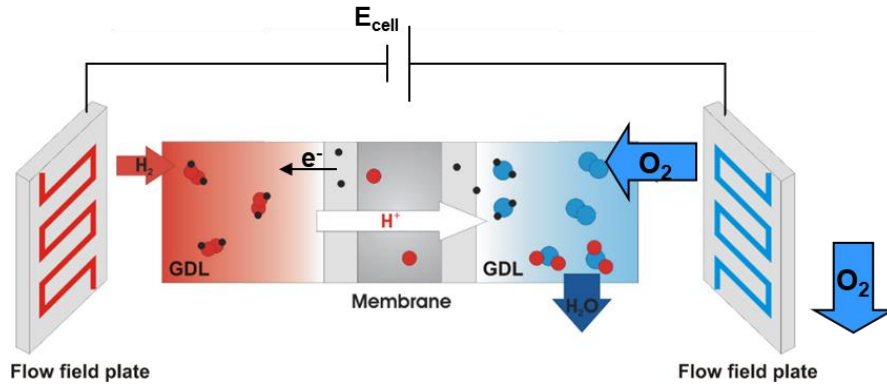
→ Pt particle agglomeration primarily at the cathode
→ Confirmation of results obtained by other techniques (EIS, potential measurements...)

Outline

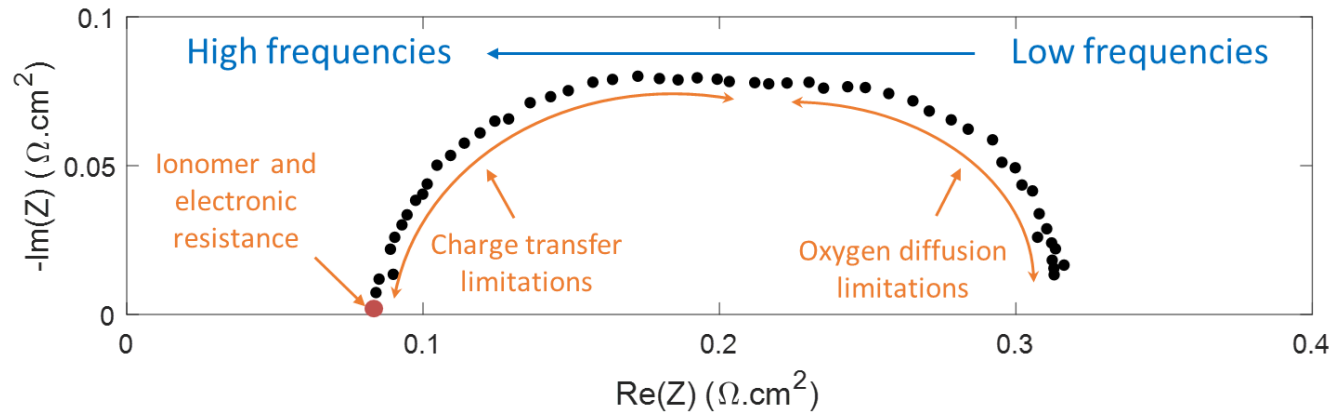
1. Hydrogen & Electrochemical Systems (HES) research group
2. Introduction to Electrochemical Impedance Spectroscopy (EIS)
3. Modeling of electrochemical storage devices → Supercapacitors (SCs)
4. Modeling of electrochemical generators → Polymer Electrolyte Membrane Fuel Cells (PEMFCs)
5. Concluding remarks

5. Concluding remarks

- ❑ **Electrochemical Impedance Spectroscopy (EIS)** is a common technique used to analyze the performance of electrochemical systems such as fuel cells and supercapacitors during operation.

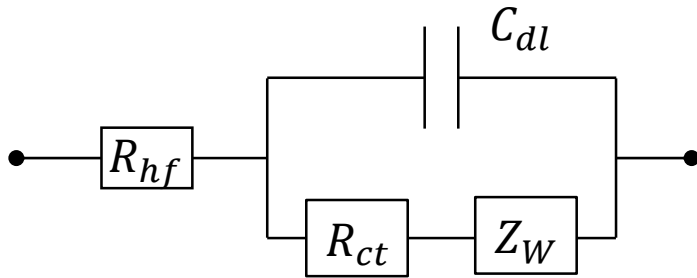


- ❑ The main advantage of EIS is that **microscopic phenomena** with different time constants can be **considered separately** in the frequency domain.

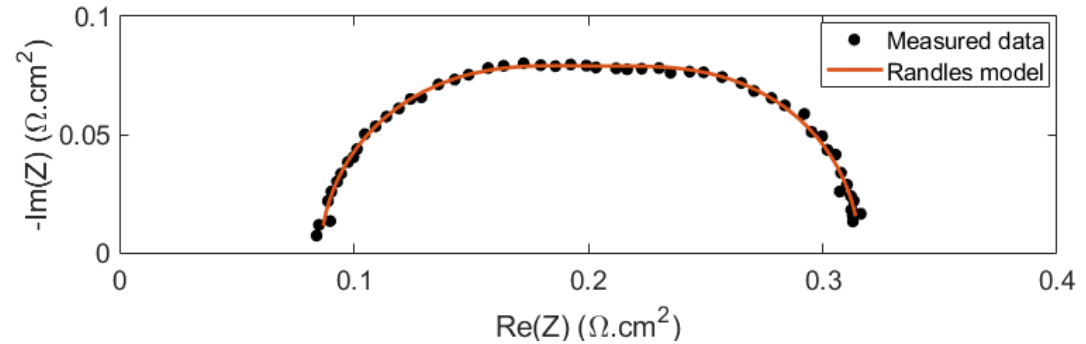


5. Concluding remarks

□ Equivalent Electrical Circuit (EEC) models allow to reproduce EIS spectra of an electrochemical system.

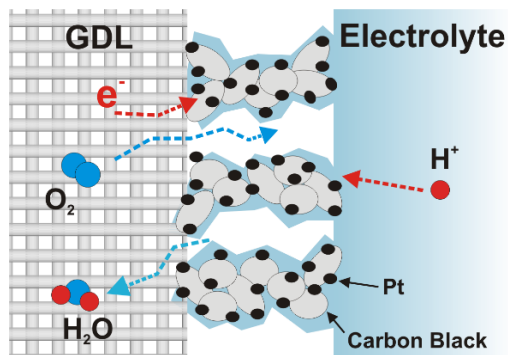


CCM MEA - thin electrodes

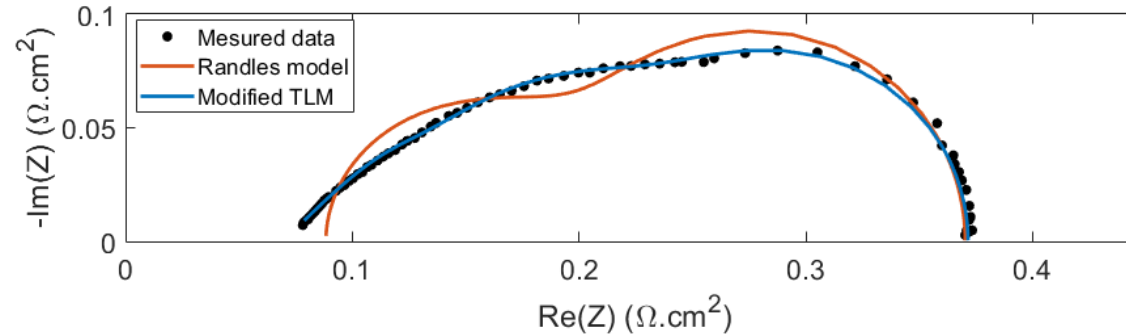


□ For a reliable interpretation

- The parameters have to be related to the microscopic phenomena at the origin of the electrical output.
- The circuit has to be adapted to the operating conditions and the composition of the system.



GDE MEA - thick electrodes

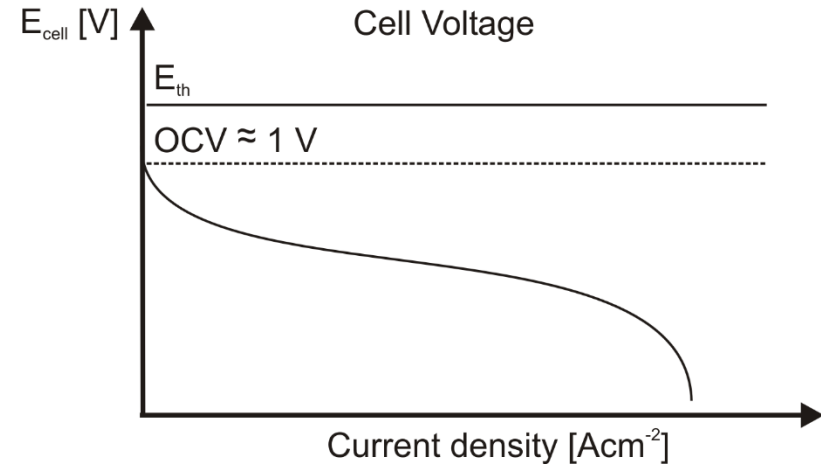
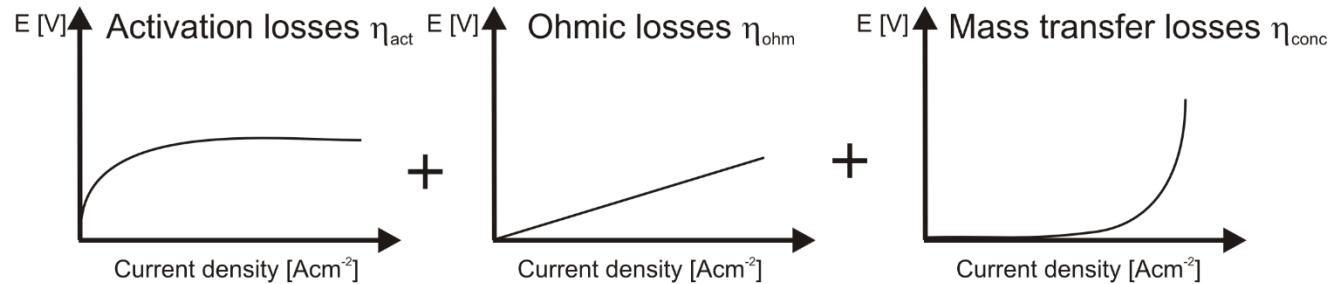




Thank you for your attention

2. PEMFC modeling – Cell performance

□ **Polarization curve** - Additional voltage losses during operation



▪ Kinetic overpotential (ORR at cathode limiting):

$$\eta_{act} = b \ln \frac{j}{j_0} \frac{c_{O_2}^*}{c_{O_2}} \quad (\text{Tafel law})$$

▪ Ionic conduction (membrane) and other contact resistances:

$$\eta_{ohm} = R_{hf} j \quad (\text{Ohmic law})$$

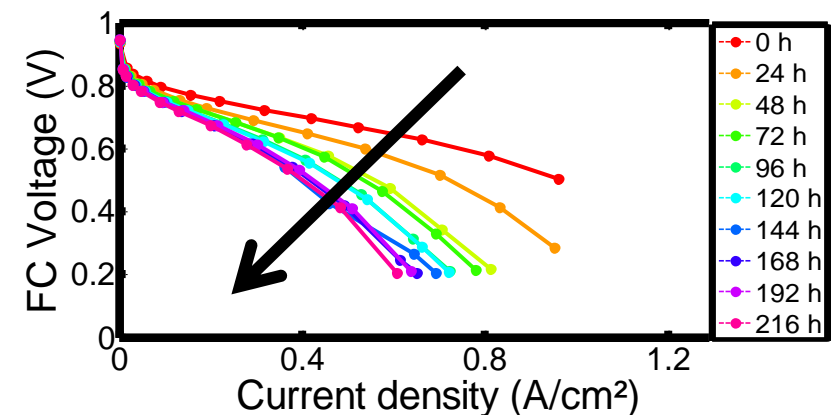
→ Total cell voltage:

$$E_{cell}(j) = E^0 - \eta_{act}(j) - \eta_{ohm}(j) - \eta_{conc}(j)$$

Main aims of R&D:

- Minimize voltage losses
- Enhance lifetime

+ Ageing (Pt coarsening, carbon corrosion,...)[1]



2. PEMFC modeling – Application to PEMFC ageing

Segmented cell with Reference Hydrogen Electrodes (RHEs)

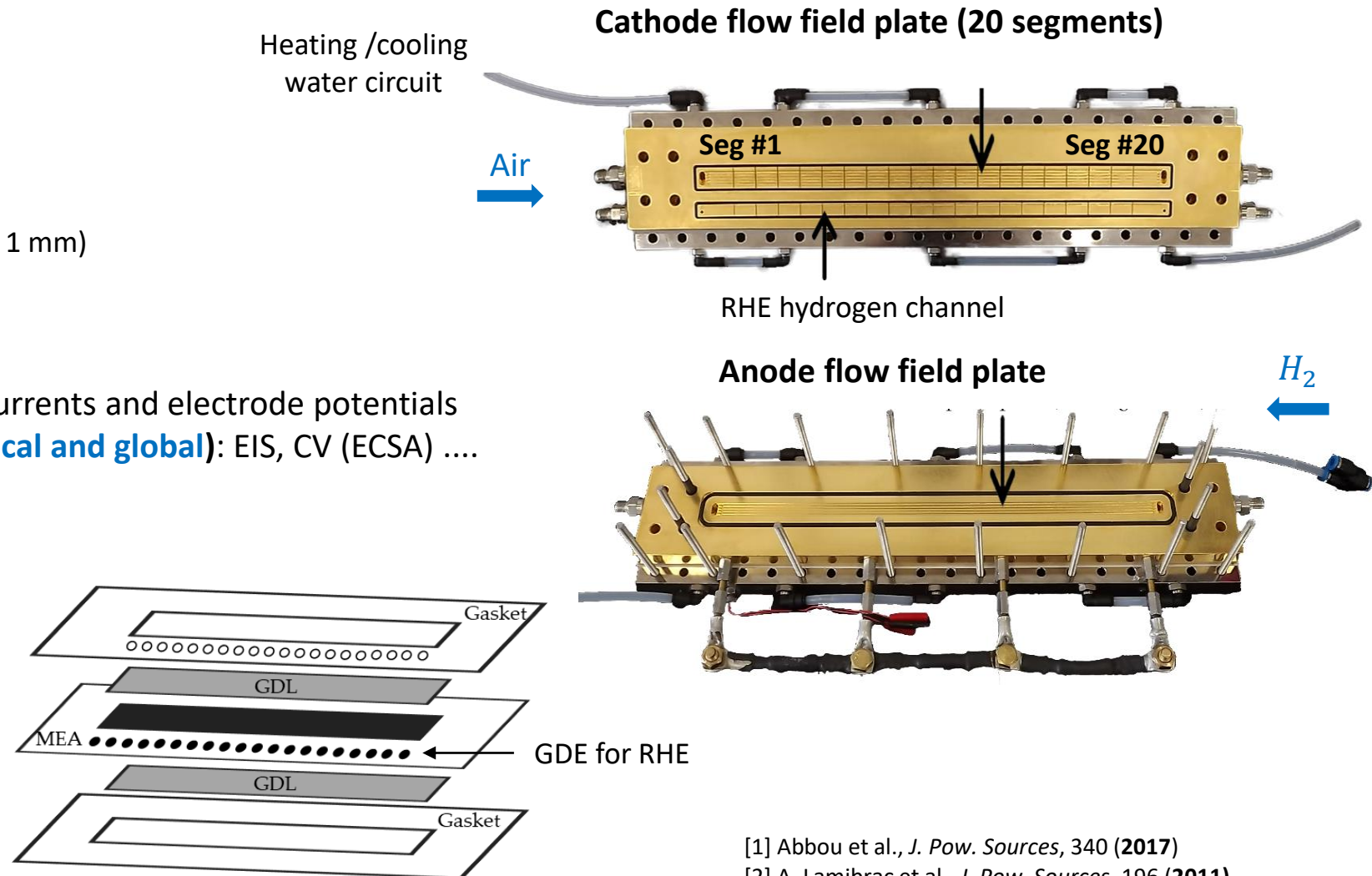
Instrumented cell [1-3]

- Linear cell (316 stainless steel)
- Cathode flow field plate (20 segments)
 - Current collection
 - RHE
- 5 parallel channels (L x H x W = 300 x 0.7 x 1 mm)
- MEA: 30 cm²
- Gas supply: counter-current

- **Measurements (local and global):** currents and electrode potentials
- **Electrochemical characterization (local and global):** EIS, CV (ECSA)

MEA (IRD)

- Membrane: Nafion XL 100
- Platinum loading:
 - Anode 0.1 mg_{pt}/cm²
 - Cathode 0.3 mg_{pt}/cm²
- HSA carbon: 800 m²/g both electrodes
- GDL: Sigracet 28 BC



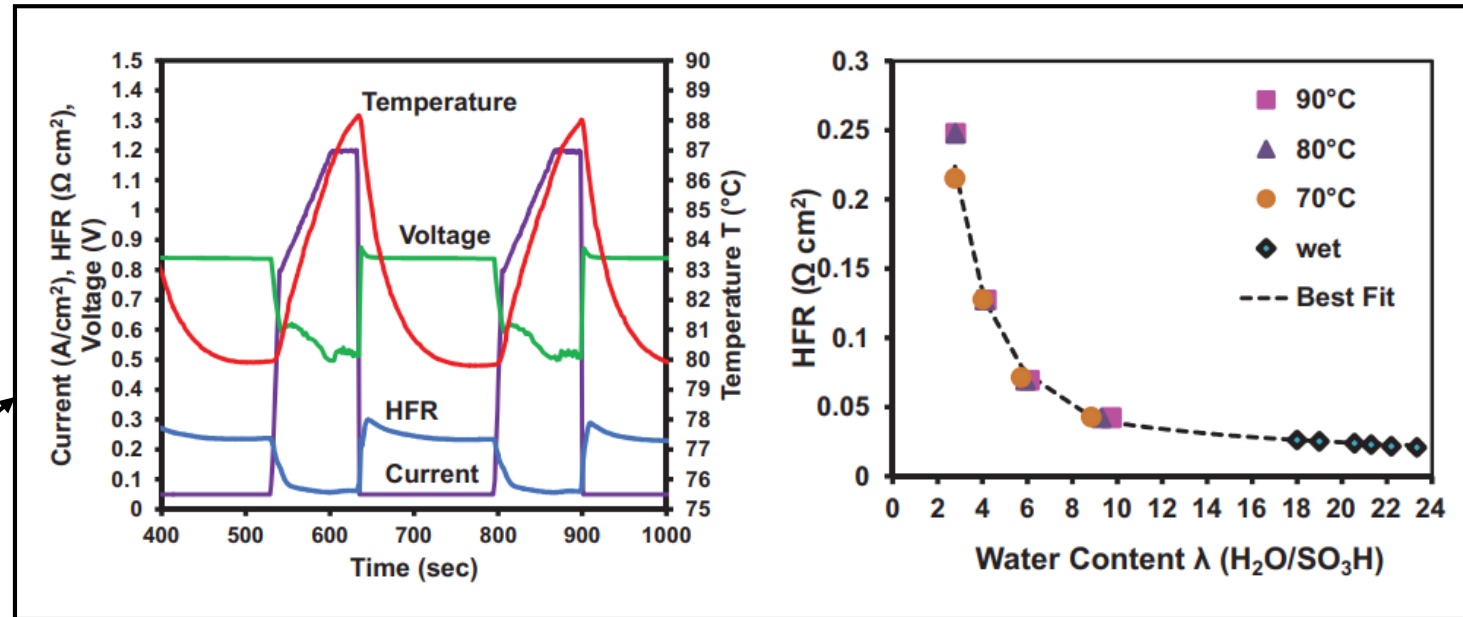
[1] Abbou et al., *J. Pow. Sources*, 340 (2017)
 [2] A. Lamibrac et al., *J. Pow. Sources*, 196 (2011)
 [3] Abbou et al., *ECS Transactions*, 2013

Accelerated stress tests (AST)

PEMFC durability testing under realistic conditions is expensive and tedious → AST

Harmful FC operation conditions

- Start-up/shut-down cycles [1]
- Open circuit voltage (OCV) [2,3]
- Load/potential cycling [2,4]...
- ... and constant load [7]
- Fuel depletion [5-7]...
- Potentiostatic cycling and hold under H₂/N₂ [8]
- Load induced humidity cycling [9]



→ **Our AST: potential cycling + load-induced humidity cycling + OCV**

[1] Maranzana et al., *J. Electrochem. Soc.*, 162 (2015)

[2] Gaumont et al., *J. Electrochem. Soc.*, 164 (2017)

[3] Mukundan et al., *J. Electrochem. Soc.*, 165 (2018)

[4] Macauley et al., *J. Electrochem. Soc.*, 165 (2018)

[5] Abbou et al., *J. Pow. Sources*, 340 (2017)

[6] Abbou et al., *ECS Transactions*, 58 (2015)

[7] Enz et al., *J. Pow. Sources*, 274 (2015)

[8] Fairweather et al., *J. Electrochem. Soc.* 160 (2013)

[9] Yeh-Hung Lai et al., *J. Electrochem. Soc.*, 165 (2018)