

### **Supplemental Figure 1: Study flow**

Flow diagram of included patients according to treatment allocation and age.

### **Supplemental Figure 2: First heart failure hospitalization by age groups**

Cumulative incidence function for the effect of empagliflozin (blue) and placebo (red) on first heart failure hospitalization by age groups of <65 years (A), 65-74 years (B), 75-79 years (C) and  $\geq 80$  years (D).

No corrections for multiple testing were applied.

### **Supplemental Figure 3: Cardiovascular death by age groups**

Hazard ratio modeled as a continuous variable for the primary outcome (composite of first heart failure hospitalization or cardiovascular death) (left) and the first heart failure hospitalization (right).

No corrections for multiple testing were applied.

### **Supplemental Figure 4: Kaplan-Meier estimate for all-cause death by age groups**

Cumulative incidence function for the effect of empagliflozin (blue) and placebo (red) on cardiovascular death by age groups of <65 years (A), 65-74 years (B), 75-79 years (C) and  $\geq 80$  years (D).

No corrections for multiple testing were applied.

### **Supplemental Figure 5: Cumulative incidence functions for primary outcome by age**

Kaplan-Meier Estimate for the effect of empagliflozin (blue) and placebo (red) on all-cause death by age groups of <65 years (A), 65-74 years (B), 75-79 years (C) and  $\geq 80$  years (D).

No corrections for multiple testing were applied.

### **Supplemental Figure 6: Cumulative incidence functions by age**

Cumulative incidence function for the effect of empagliflozin (blue) and placebo (red) on the primary outcome (composite of first heart failure hospitalization or cardiovascular death) in patients <75 years (A),  $\geq 75$  years (B), <80 years (C) and  $\geq 80$  years (D).

No corrections for multiple testing were applied.

### **Supplemental Figure 7: KCCQ-CSS responder analysis at week 52**

Cumulative incidence function for the effect of empagliflozin (blue) and placebo (red) on first heart failure hospitalization  $<, \geq 75$  years (A), recurrent heart failure hospitalization  $<, \geq 75$  years (B), first heart failure hospitalization  $<, \geq 80$  years (C) and recurrent heart failure hospitalization  $<, \geq 80$  years (D).

No corrections for multiple testing were applied.

**Supplemental Figure 8: KCCQ-CSS MMRM change from baseline**

Responder rate analysis of the effect of empagliflozin and placebo on mean Kansas City Cardiomyopathy Questionnaire-Clinical Summary Score (KCCQ-CSS) in patients  $< 65$  years (A), 65-74 years (B), 75-79 years (C) and  $\geq 80$  years (D).

HR: hazard ratio; CI=confidence interval

No corrections for multiple testing were applied.

**Supplemental Figure 9: KCCQ-CSS responder analysis at week 52 by age**

Adjusted mean change from baseline in the Kansas City Cardiomyopathy Questionnaire-Clinical Summary Score (KCCQ-CSS) by empagliflozin versus placebo at week 52 by age groups of  $< 75$  years (A),  $\geq 75$  years (B),  $< 80$  years (C) and  $\geq 80$  years (D).

HR: hazard ratio; CI=confidence interval

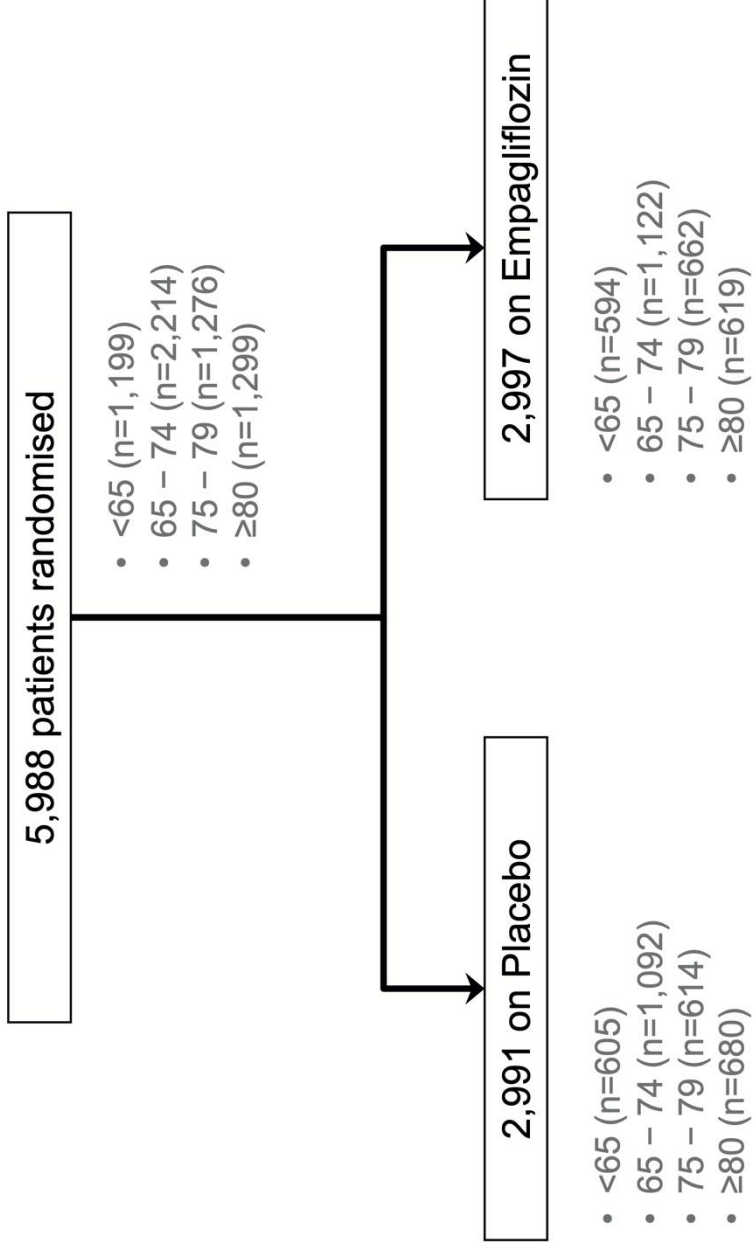
No corrections for multiple testing were applied.

**Supplemental Figure 10: KCCQ-CSS responder analysis at week 52 by age**

Responder rate analysis of the effect of empagliflozin and placebo on mean Kansas City Cardiomyopathy Questionnaire-Clinical Summary Score (KCCQ-CSS) in patients  $< 75$  years (A),  $\geq 75$  years (B),  $< 80$  years (C) and  $\geq 80$  years (D).

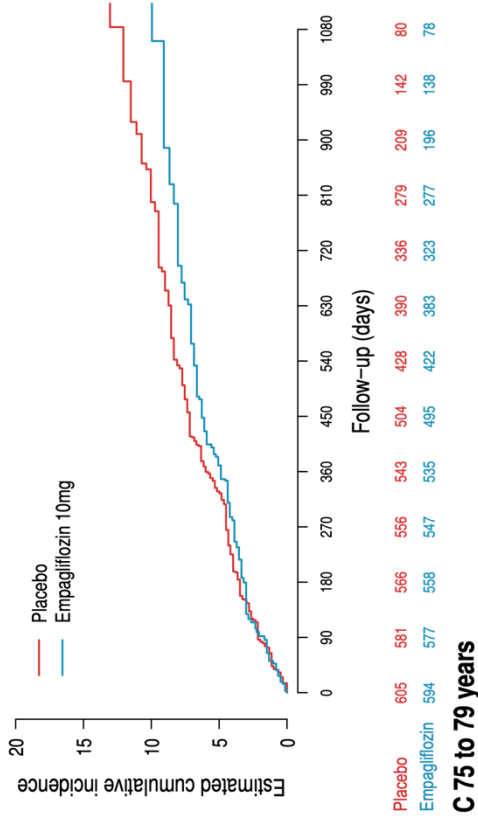
No corrections for multiple testing were applied.

Supplement Figure 1: Study flow

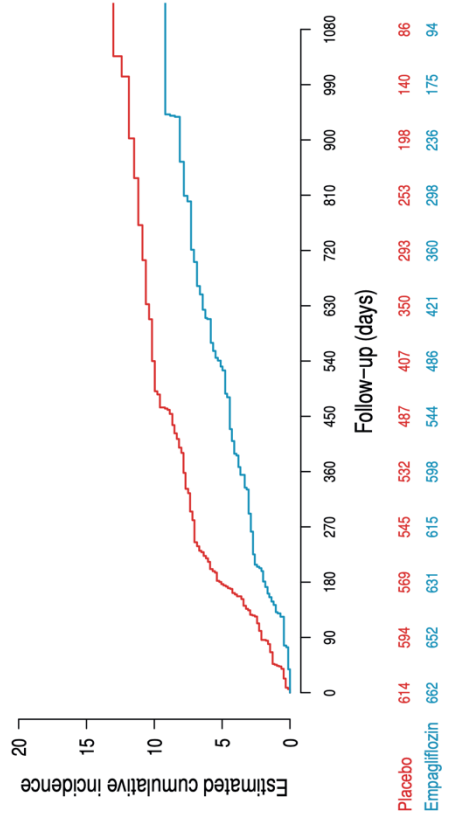
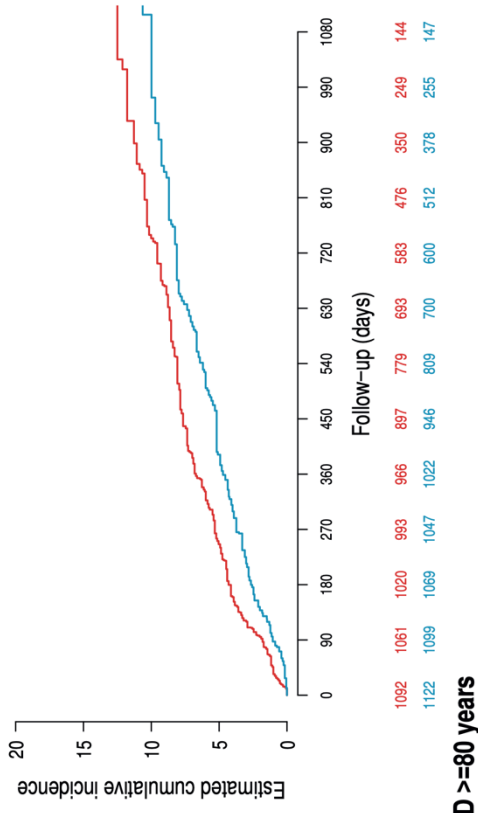


Supplement Figure II: First heart failure hospitalization by age groups

**A <65 years**



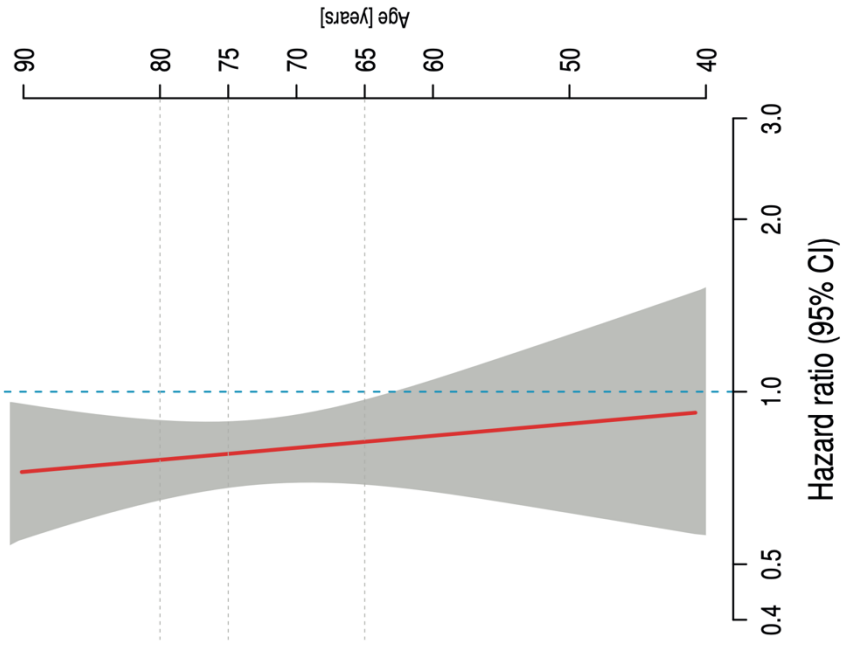
**B 65 to 74 years**



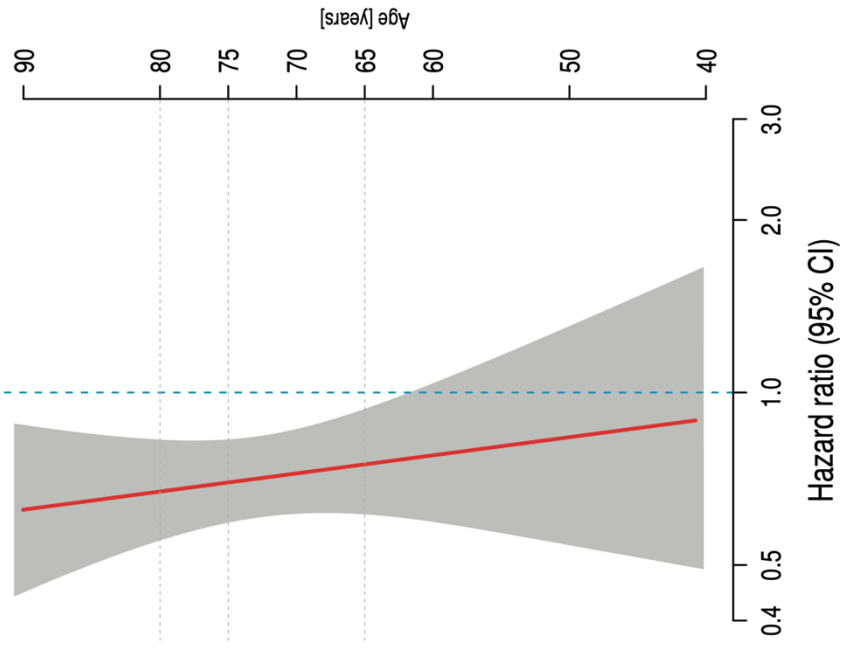
p for trend = 0.22

Supplement Figure III: Treatment effects

### A Primary outcome

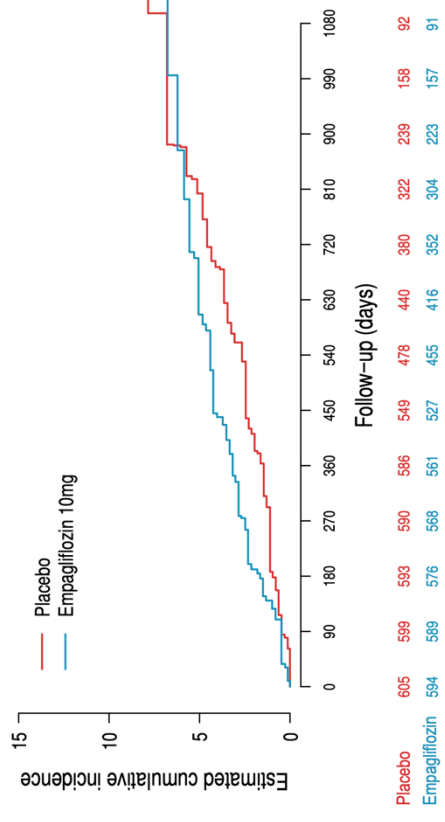


### B First heart failure hospitalization

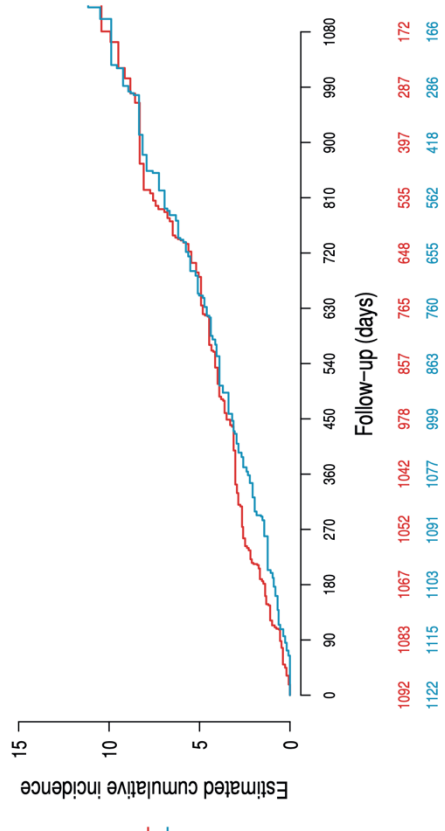


Supplement Figure IV: Cardiovascular death by age groups

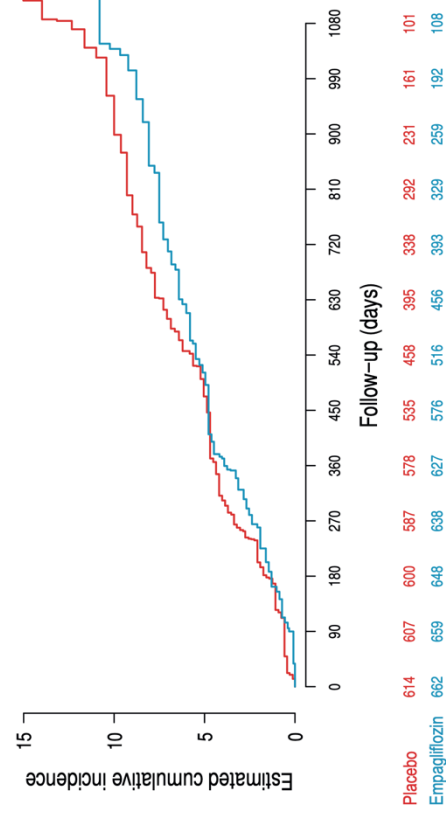
**A <65 years**



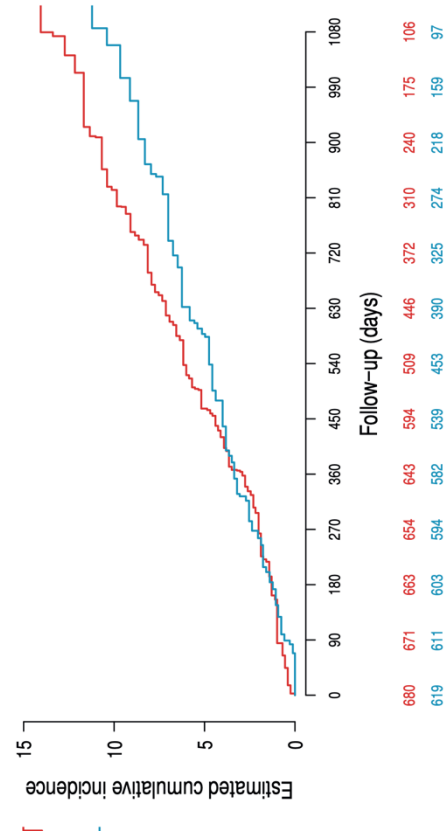
**B 65 to 74 years**



**C 75 to 79 years**

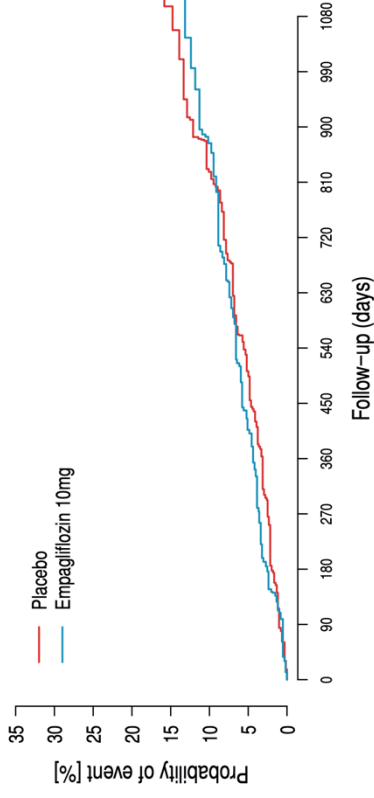


**D >=80 years**

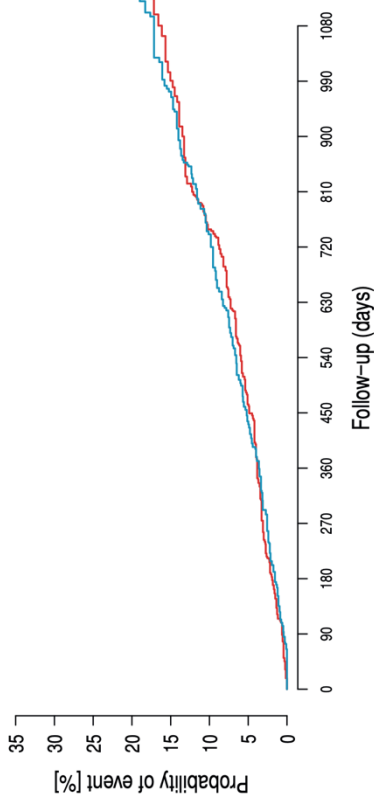


Supplement Figure V: Kaplan-Meier estimate for all-cause death by age groups

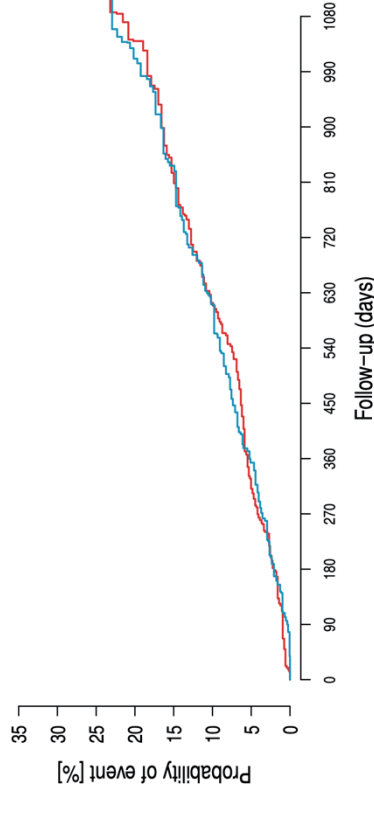
**A <65 years**



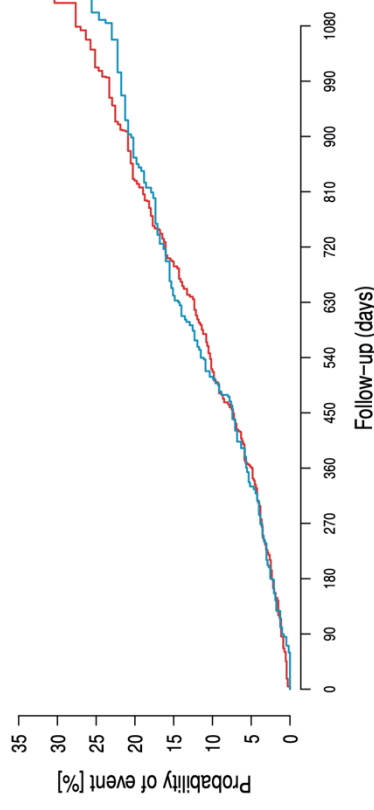
**B 65 to 74 years**



**C 75 to 79 years**

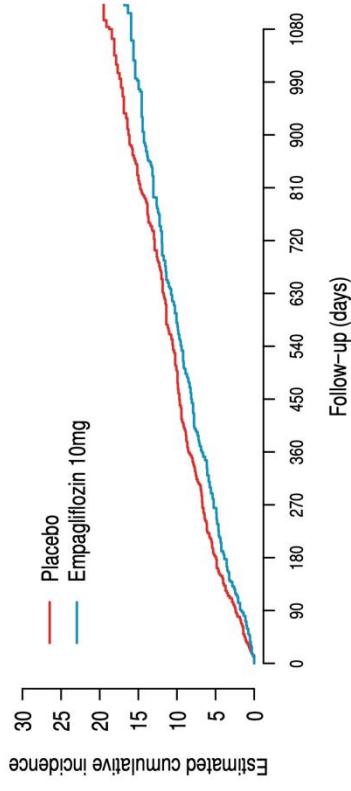


**D >=80 years**

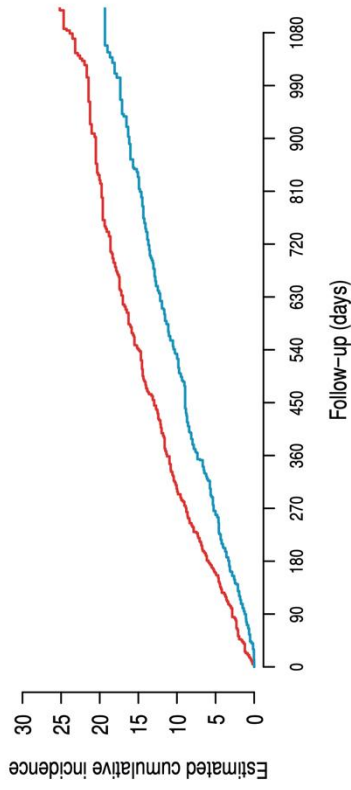


Supplement Figure VI: Cumulative incidence functions for primary outcome by age <75, ≥75, <80 and ≥80 years

**A <75 years**

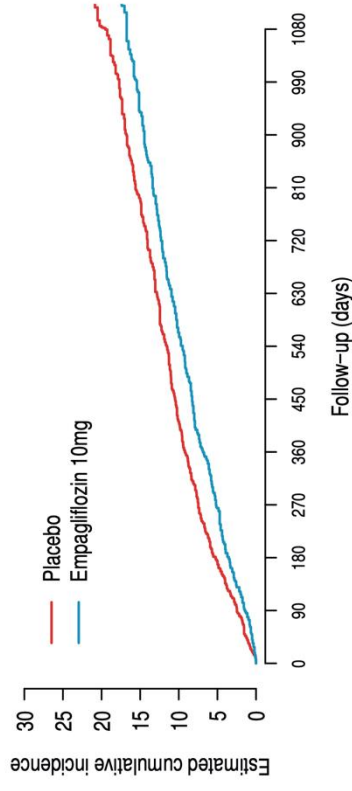


**B ≥75 years**



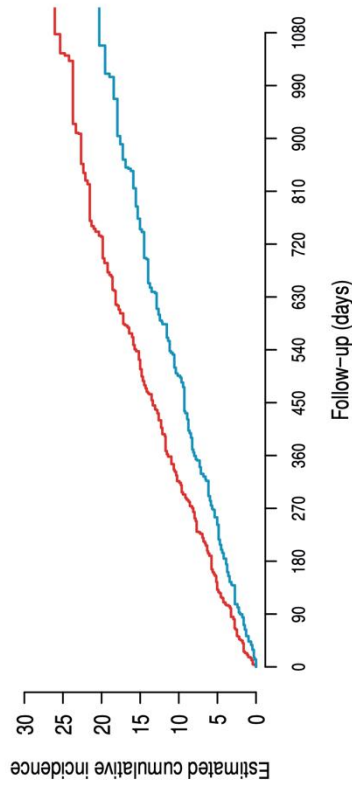
p for interaction = 0.22

**C <80 years**



p for interaction = 0.51

**D ≥80 years**



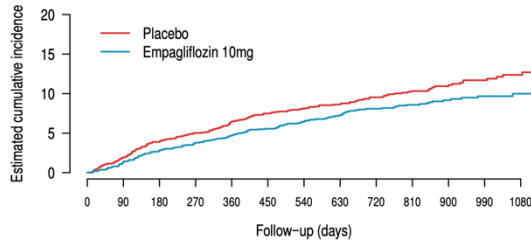


Supplement Figure VII: Cumulative incidence functions for age <75, ≥75, <80 and ≥80 years

**A First heart failure hospitalization**

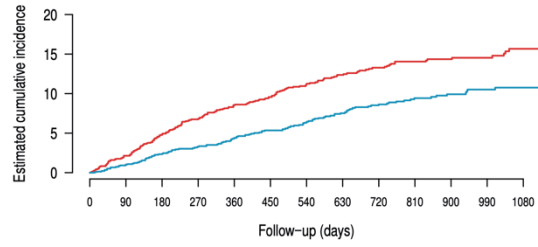
p for interaction = 0.12

**a <75 years**



Placebo	1697	1642	1586	1549	1509	1401	1207	1083	919	755	559	391	224
Empagliflozin	1716	1676	1627	1594	1557	1441	1231	1083	923	789	574	393	225

**b ≥75 years**

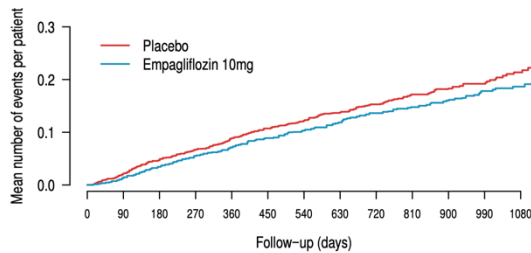


Placebo	1294	1246	1200	1157	1118	1023	859	738	615	523	402	290	176
Empagliflozin	1281	1252	1216	1186	1151	1050	903	775	655	543	431	316	177

**B Recurrent heart failure hospitalization**

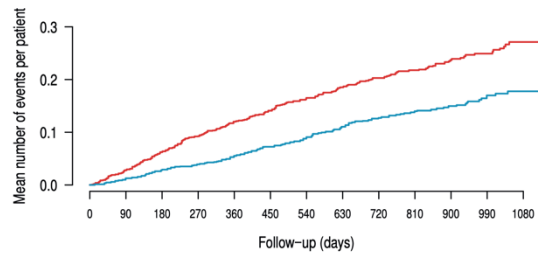
p for interaction = 0.06

**a <75 years**



Placebo	1697	1674	1647	1624	1606	1501	1307	1178	1006	830	611	428	254
Empagliflozin	1716	1699	1627	1650	1624	1506	1299	1152	986	846	620	425	248

**b ≥75 years**

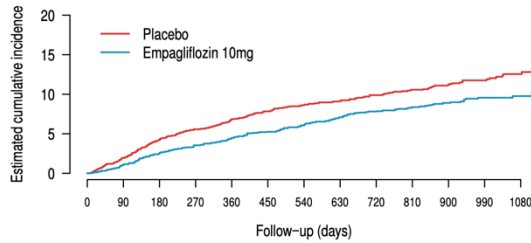


Placebo	1294	1271	1254	1231	1210	1117	951	820	689	584	450	319	194
Empagliflozin	1281	1263	1241	1219	1193	1098	948	825	698	583	461	340	198

**C First heart failure hospitalization**

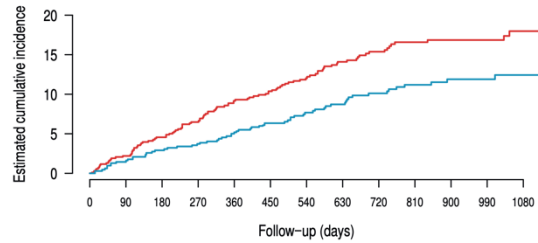
p for interaction = 0.53

**a <80 years**



Placebo	2311	2236	2155	2094	2041	1888	1614	1433	1212	1008	757	531	310
Empagliflozin	2378	2328	2258	2209	2155	1985	1717	1504	1283	1087	810	568	319

**b ≥80 years**

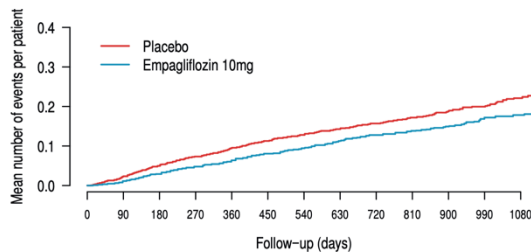


Placebo	680	652	631	612	586	536	452	388	322	270	204	150	90
Empagliflozin	619	600	585	571	553	506	417	354	295	245	195	141	83

**D Recurrent heart failure hospitalization**

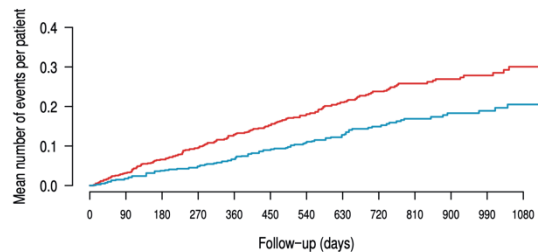
p for interaction = 0.55

**a <80 years**



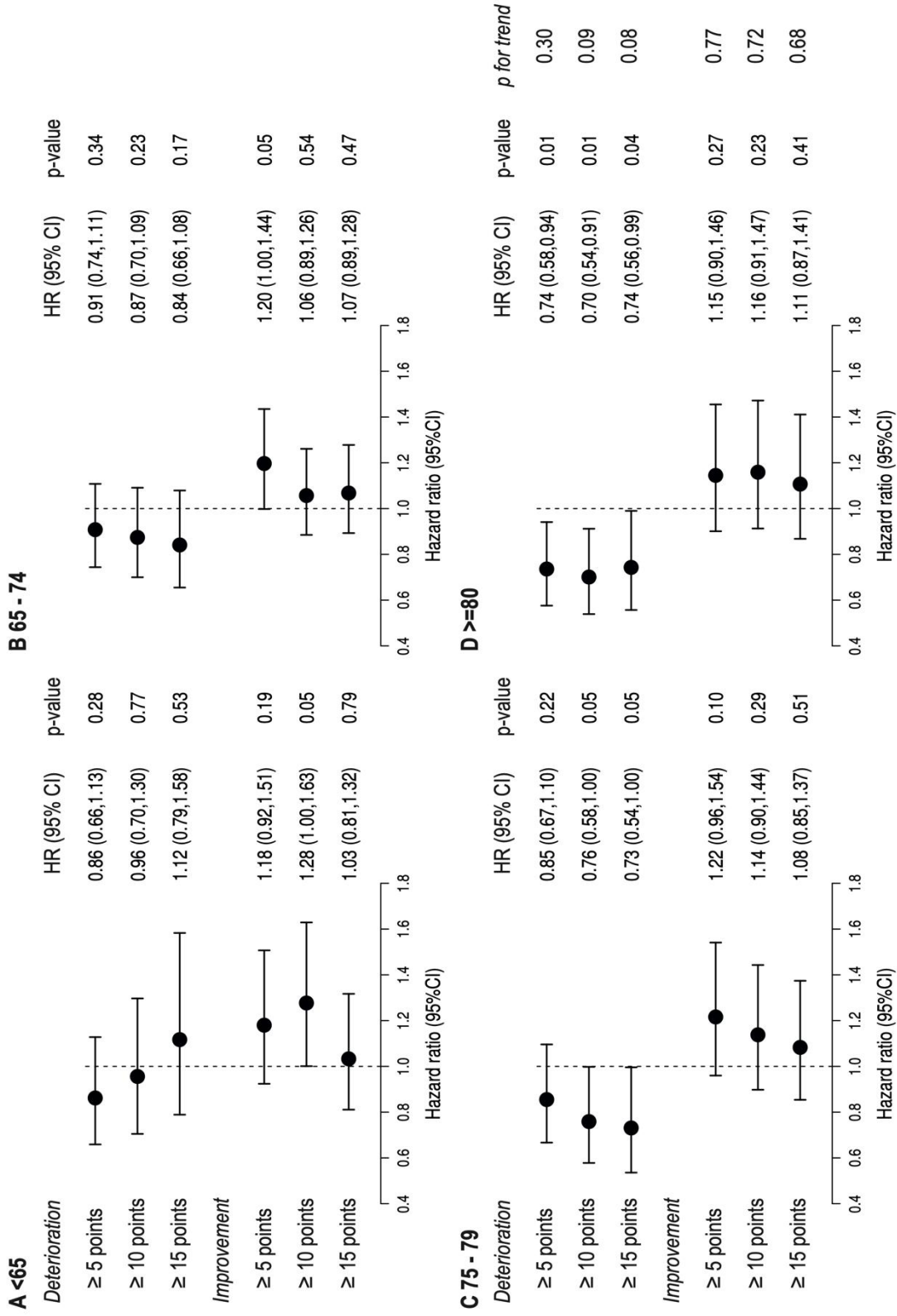
Placebo	2311	2279	2243	2206	2178	2029	1757	1563	1332	1112	830	580	347
Empagliflozin	2378	2353	2312	2279	2240	2071	1803	1597	1368	1165	870	611	352

**b ≥80 years**

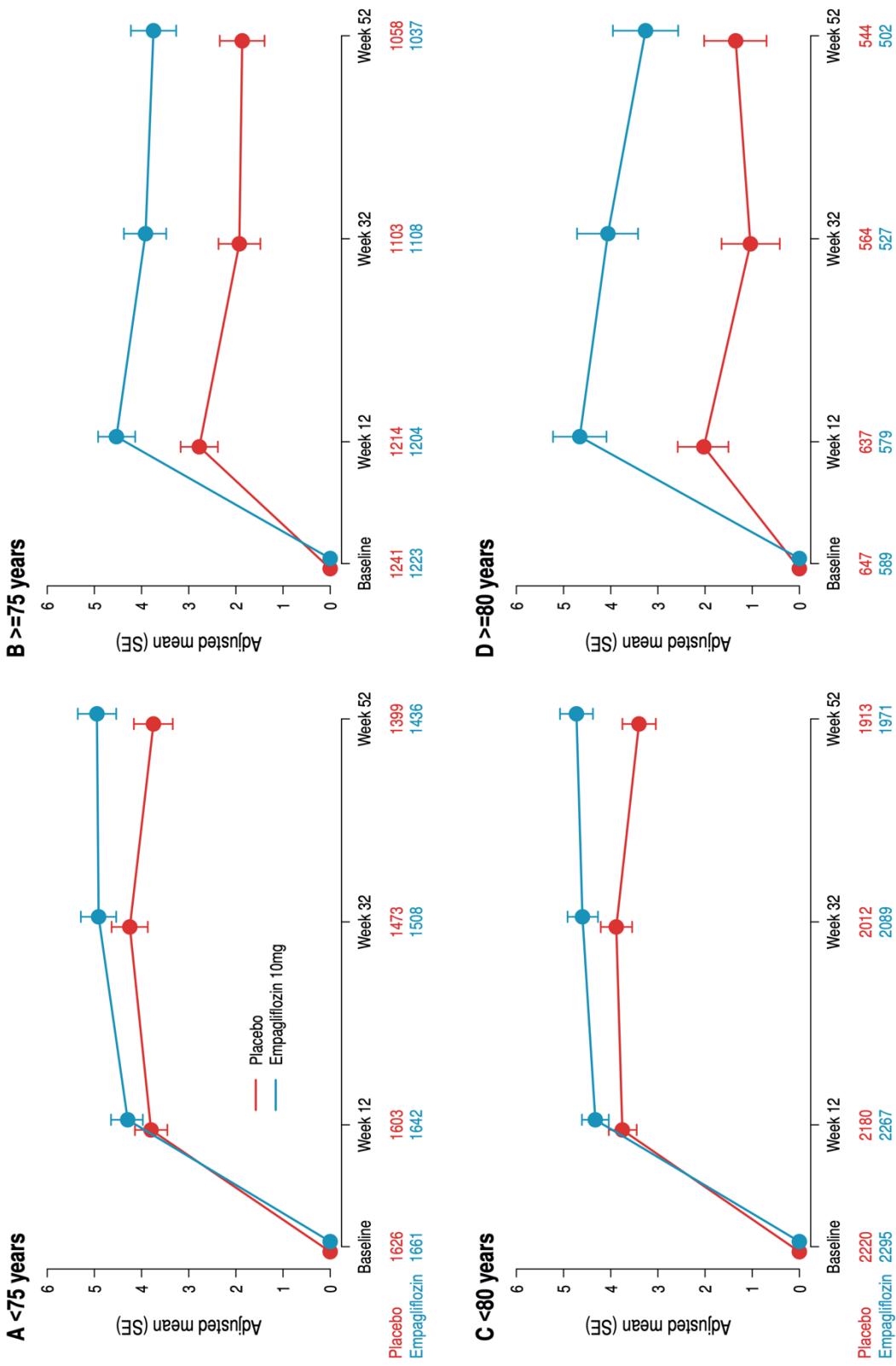


Placebo	680	666	658	649	638	589	501	435	363	302	231	167	101
Empagliflozin	619	609	601	590	577	533	444	380	316	264	211	154	94

Supplement Figure VIII: KCCQ-CSS responder analysis at week 52 by age groups



Supplement Figure IX: KCCQ-CSS MMRM change from baseline up to week 52 by age <75, ≥75, <80 and ≥80 years



Supplement Figure X: KCCQ-CSS responder analysis at week 52 by age

