



**HAL**  
open science

## **Biomarker-driven prognostic models in chronic heart failure with preserved ejection fraction: the EMPEROR –Preserved trial**

Stuart J Pocock, João Pedro Ferreira, Milton Packer, Faiez Zannad, Gerasimos Filippatos, Toru Kondo, John J.V. McMurray, Scott D Solomon, James L Januzzi, Tomoko Iwata, et al.

### ► To cite this version:

Stuart J Pocock, João Pedro Ferreira, Milton Packer, Faiez Zannad, Gerasimos Filippatos, et al.. Biomarker-driven prognostic models in chronic heart failure with preserved ejection fraction: the EMPEROR –Preserved trial. *European Journal of Heart Failure*, 2022, 24 (10), pp.1869-1878. 10.1002/ejhf.2607 . hal-03792694

**HAL Id: hal-03792694**

**<https://hal.univ-lorraine.fr/hal-03792694>**

Submitted on 30 Sep 2022

**HAL** is a multi-disciplinary open access archive for the deposit and dissemination of scientific research documents, whether they are published or not. The documents may come from teaching and research institutions in France or abroad, or from public or private research centers.

L'archive ouverte pluridisciplinaire **HAL**, est destinée au dépôt et à la diffusion de documents scientifiques de niveau recherche, publiés ou non, émanant des établissements d'enseignement et de recherche français ou étrangers, des laboratoires publics ou privés.

# **Biomarker-driven prognostic models in chronic heart failure with preserved ejection fraction: the EMPEROR–Preserved trial**

## **Running Title: Biomarker-driven prognostic models for HFpEF**

Authors:

Stuart J. Pocock<sup>1</sup>; João Pedro Ferreira<sup>2,3</sup>; Milton Packer<sup>4,5</sup>; Faiez Zannad<sup>3</sup>; Gerasimos Filippatos<sup>6</sup>; Toru Kondo<sup>7,8</sup>; John J.V. McMurray<sup>8</sup>; Scott D. Solomon<sup>9</sup>; James L. Januzzi<sup>10</sup>; Tomoko Iwata<sup>11</sup>; Afshin Salsali<sup>11</sup>; Javed Butler<sup>12</sup>; Stefan D. Anker<sup>13</sup>

1. Department of Medical Statistics, London School of Hygiene and Tropical Medicine, London, UK.
2. UNIC@Rise, Department of Surgery and Physiology, Faculty of Medicine, Cardiovascular Research and Development Center, University of Porto, Porto, Portugal.
3. Université de Lorraine, Inserm, Centre d'Investigations Cliniques Plurithématique 1433, and Inserm U1116, CHRU, F-CRIN INI-CRCT (Cardiovascular and Renal Clinical Trialists), Nancy, France.
4. Baylor Heart and Vascular Hospital, Baylor University Medical Center, Dallas, TX, USA.
5. Imperial College, London, UK.
6. National and Kapodistrian University of Athens, School of Medicine, Department of Cardiology, Attikon University Hospital, Athens, Greece.

7. Department of Cardiology, Nagoya University Graduate School of Medicine, Nagoya, Japan.
8. British Heart Foundation Cardiovascular Research Centre, University of Glasgow, Glasgow, UK.
9. Cardiovascular Division, Brigham and Women's Hospital, Harvard Medical School, Boston, Massachusetts, USA.
10. Massachusetts General Hospital, Harvard Medical School, Boston, Massachusetts, USA.
11. Boehringer Ingelheim Pharma GmbH & Co. KG, Biberach, Germany.
12. Department of Medicine, University of Mississippi Medical Center, Jackson, Mississippi, USA.
13. Department of Cardiology, and Berlin Institute of Health Center for Regenerative Therapies, German Centre for Cardiovascular Research Partner Site Berlin, Charité Universitätsmedizin, Berlin, Germany.

Contact to:

Prof. Stuart J. Pocock

London School of Hygiene and Tropical Medicine

Keppel St, London WC1E 7HT, UK.

Phone: +44 20 7636 8636

Mail: [stuart.pocock@lshtm.ac.uk](mailto:stuart.pocock@lshtm.ac.uk)

## **ABSTRACT**

### **Background**

Biomarker-driven prognostic models incorporating NT-proBNP and hs-cTnT in HFpEF are lacking.

### **Aims**

To generate a biomarker-driven prognostic tool for patients with chronic HFpEF enrolled in EMPEROR-Preserved.

### **Methods**

Multivariable Cox regression models were created for (i) the primary composite outcome of HF hospitalization or cardiovascular death (ii) all-cause death (iii) cardiovascular death and (iv) HF hospitalization. PARAGON-HF was used as a validation cohort.

### **Results**

NT-proBNP and hs-cTnT were the dominant predictors of the primary outcome, and in addition, a shorter time since last hospitalization, NYHA class III or IV, history of COPD, insulin-treated diabetes, low hemoglobin, and a longer time since HF diagnosis were key predictors (8 variables, all  $P < 0.001$ ). The consequent primary outcome risk score discriminated well (c-statistic=0.75) with patients in the top 10<sup>th</sup> of risk having an event rate >22x higher than those in the bottom 10<sup>th</sup>. A model for HF hospitalization alone had even better discrimination (c=0.79). Empagliflozin reduced the risk of cardiovascular death or hospitalization for heart failure in patients across all risk levels. NT-proBNP and hs-cTnT were also the dominant predictors of all-cause and cardiovascular mortality followed by history of COPD, low albumin, older age, LVEF  $\geq 50\%$ , NYHA class III or IV and insulin-treated diabetes (8 variables, all

P<0.001). The mortality risk model had good discrimination for all-cause and cardiovascular mortality (c-statistic=0.72 for both). External validation provided c-statistics of 0.71, 0.71, 0.72, and 0.72 for the primary outcome, HF hospitalization alone, all-cause death, and cardiovascular death, respectively.

### **Conclusions**

The combination of NT-proBNP and hs-cTnT along with a few readily available clinical variables provides excellent prognostic discrimination for patients with HFpEF.

*Key-words:* risk model; biomarkers; heart failure with preserved ejection fraction

## INTRODUCTION

Patients with chronic heart failure and preserved ejection fraction (HFpEF) typically have a poor prognosis. An accurate prediction of individual patient prognosis may be important to define tailored care strategies (e.g., frequency of clinic visits, home follow-up by health care professionals, or prognosis-related discussions with the patient and his/her family members). Although risk models have been developed for patients with heart failure and a reduced ejection fraction, there is a lack of established prognostic models for patients with HFpEF. The CHARM risk score was developed for patients with both reduced ejection fraction heart failure (HFrEF) and HFpEF, but it is now over 15 years old and did not include well-established prognostic biomarkers such as NT-proBNP and hs-cTnT.<sup>1</sup> The MAGGIC meta-analysis of 30 cohort studies across the whole spectrum of chronic heart failure, included a sub-analysis in 407 patients with HFpEF.<sup>2</sup> These models did not include natriuretic peptides, cardiac troponins or their combination. The I-Preserve risk models,<sup>3</sup> and the 3A3B score,<sup>4</sup> included NT-proBNP but did not include cardiac troponins.

We have recently developed biomarker-driven prognostic models for patients with HFrEF. In these models, N-terminal pro-brain natriuretic peptide (NT-proBNP) and high-sensitivity cardiac troponin T (hs-cTnT) were the strongest prognostic predictors, followed by a few readily available clinical variables, which facilitated the application of this prognostic tool-kit in routine practice.<sup>5</sup> This experience motivated us to use data from Empagliflozin Outcome Trial in Patients with Chronic Heart Failure and a Preserved Ejection Fraction (EMPEROR-Preserved) to utilize information on NT-proBNP and hs-cTnT to develop simple and ready-to-implement models for predicting the individual patient incidence of the composite of HF hospitalization or

cardiovascular death, all-cause death, and cardiovascular death in patients with HFpEF.

## **METHODS**

### **Study Design**

The design and primary results of the EMPEROR-Preserved trial have been described previously<sup>6,7</sup>. In brief, participants had chronic HF with New York Heart Association (NYHA) functional class II to IV symptoms and a left ventricular ejection fraction (LVEF) >40% with no prior measurement ≤40%. Patients were also required to have an elevated NT-proBNP level (>900 pg/ml or >300 pg/ml in patients with and without atrial fibrillation, respectively) and a documented hospitalization for HF or evidence of structural heart disease within 12 months before enrolment. A total of 5988 patients were randomized to receive either empagliflozin 10mg or placebo daily over a median follow-up of 26.2 months. The primary outcome was time-to-first event in a composite of HF hospitalization or cardiovascular death. The mode of death and hospitalizations for HF were independently adjudicated by a blinded committee based on pre-specified criteria.

Blood was collected for measurement of NT-proBNP (expressed in pg/ml) and hs-cTnT (expressed in ng/L) at baseline and measured in a central laboratory (Roche Diagnostics, Risch-Rotkreutz, Switzerland) using a Roche® Cobas analyzer. The Institutional Review Board of each study site approved of all study procedures and all patients provided informed consent.

External validation was performed in a subset of patients from the PARAGON-HF trial. The PARAGON-HF trial randomized 4796 patients with HFpEF to

sacubitril/valsartan or valsartan, its methods and primary results have been published previously.<sup>8</sup> A subset of 1251 patients from PARAGON-HF who had available hs-cTnT, NT-proBNP (using the same assays), and the remaining variables required to validate the EMPEROR-Preserved models was used for external validation.<sup>9</sup>

### **Statistical Analysis**

For the primary composite outcome of HF hospitalization or cardiovascular death, HF hospitalization alone, all-cause mortality, and cardiovascular death multivariable Cox proportional hazard models were used to study the relation of patient variables at baseline to outcome incidence. First, 35 variables were selected by the EMPEROR-Preserved Executive Committee based on their availability, clinical significance and potential prognostic importance; these 35 candidate predictor variables are listed in *Supplementary Table S1*. Second, we used stepwise forward variable selection with  $P < 0.001$  as a criterion for inclusion (to keep the model parsimonious) with log-transformed NT-proBNP and hs-cTnT to achieve a good linear fit. Third, we evaluated model discrimination (using Harrell's c-statistics) and calibration (by plotting the observed versus predicted 2-year risk by deciles of risk). Missing data were rare, with all candidate covariates available in >90% of patients. We used single value imputation to impute missing data using the median for continuous variables or the mode for categorical variables.

The EMPEROR-Preserved risk models' coefficients were applied to the PARAGON-HF subset of 1251 patients to obtain their predictive capacity expressed by c-statistics and model calibration shown in calibration plots.



Analyses were performed using SAS, version 9.4 (SAS Institute) and STATA, version 17.0 (StataCorp, 2021).

## **Data Sharing**

To ensure independent interpretation of clinical study results and enable authors to fulfil their role and obligations under the ICMJE criteria, Boehringer Ingelheim grants all external authors access to relevant material. In adherence with the Boehringer Ingelheim Policy on Transparency and Publication of Clinical Study Data, scientific and medical researchers can request access to clinical study data after publication of the primary manuscript in a peer-reviewed journal, regulatory activities are complete and other criteria are met. Researchers should use the <https://vivli.org/> link to request access to study data and visit <https://www.mystudywindow.com/msw/datasharing> for further information.

## **RESULTS**

### **Primary Composite Outcome**

The primary composite outcome of HF hospitalization or cardiovascular death occurred in 415 of 2997 patients (13.8%) in the empagliflozin group and in 511 of 2991 patients (17.1%) in the placebo group: hazard ratio (HR) 0.79, 95% confidence interval (CI) 0.69-0.90,  $P < 0.001$ .

After stepwise variable selection, the prognostic model for the primary outcome included log-transformed NT-proBNP and hs-cTnT as the most powerful predictors, based on the chi-squared statistic for inclusion. These two biomarkers were followed by (1) shorter time since most recent HF hospitalization, (2) NYHA functional class III/IV, (3) history of chronic obstructive pulmonary disease (COPD), (4) insulin-

treated diabetes, (5) hemoglobin <12 g/dL and (6) time since HF diagnosis of 1 year or greater. The randomized treatment (empagliflozin versus placebo) remained highly predictive after adjustment for these 8 baseline predictors (*Table 1*).

The strength of prediction for the primary outcome is captured by the c-statistic of 0.748 (95% CI 0.732-0.764). The goodness of fit and strength of prediction for this model, based on eight baseline predictors plus randomized treatment, are displayed in *Figure 1A*.

A risk score based on the coefficients in *Table 1* has its distribution divided into 10 equal-sized groups. In each decile there is good agreement between the observed and model-predicted patient risk, both expressed as the percentage having a primary event in 2 years. Comparing top and bottom deciles of risk the observed two-year event rates are 47.8% and 2.1%, respectively. We considered the option of extending the model to include other predictors that each achieved  $P < 0.01$  rather than the more stringent  $P < 0.001$ : this would have added total bilirubin and history of left bundle branch block. Also, both albuminuria determined by urinary albumin-to-creatinine ratio UACR, and KCCQ overall summary score were highly significant independent predictors (each  $p < 0.0001$ ), but they were excluded from our primary model because these variables are not readily available for clinical use, and also UACR was not available in our validation cohort. The addition of these two variables would increase model complexity but with only a slight gain in strength of prediction, c becomes 0.756. The consequent model is shown in *Supplemental Table S3A*.

To evaluate the effect of empagliflozin at different levels of patient risk, we calculated a risk score using coefficients for the eight significant predictors in *Table 1* (excluding the coefficient for randomized treatment). We then stratified patients into equal-sized

thirds of risk each containing around 2000 patients per risk tertile. *Figure 2A* shows the HR and 95% CIs for empagliflozin versus placebo by tertiles of risk. There is a consistency of relative risk reduction in all three risk groups (P for trend =0.68). *Figure 2B* shows the absolute difference in risk for the same tertiles, expressed as the treatment difference in primary event rate per 100 patient-years. On this absolute scale there is a significant trend in treatment effect by risk groups: for low, medium, and high-risk groups the rate differences are -0.64, -1.86 and -3.93 primary events per 100 patient-years, respectively (P for trend =0.026). Kaplan Meier plots of the primary outcome over 24 months by risk tertiles and by treatment groups confirm these patterns of treatment effect by patient risk (*Supplementary Figure S1*).

### **Heart Failure Hospitalization Only**

There is interest in also determining risk models for incidence of heart failure hospitalization only. The same set of predictors are identified as for the primary endpoint, with the exception that diabetes is no longer such a powerful predictor, see *Supplementary Table S4A*. The c-statistic is 0.787 which is higher than for the primary endpoint, and the goodness of fit and strength of prediction for this model are shown in *Supplementary Figure S2*. In addition to NT-proBNP and hs-cTnT remaining powerful predictors, a recent prior HF hospitalization predicts particularly strongly.

Adding in UACR and KCCQ-OSS slightly enhances prediction, c becomes 0.793, and this fuller model is in *Supplementary Table S4B*. Further inclusions of urea nitrogen and total bilirubin as significant predictors increase c to 0.798 but of course add to model complexity.

## **All-Cause and Cardiovascular Mortality**

Death from any cause occurred in 849 (14.2%) of 5988 patients, 422 in the empagliflozin group and 427 in the placebo group: HR 1.00 (95% CI 0.87-1.15). A new risk model for mortality, using the same set of candidate predictors as above, yielded eight variables that achieved the inclusion criterion of  $P < 0.001$  (*Table 2*). NT-proBNP and hs-cTnT remained the most dominant risk factors for mortality, followed by history of COPD, lower albumin, older age (especially over 75 years), LVEF  $< 50\%$ , NYHA class III/IV and insulin-treated diabetes. The distributions of all five quantitative risk factors are presented in *Supplementary Figure S2*.

The c-statistic for this prognostic model for all-cause death is 0.715 (95% CI 0.697-0.733) and *Figure 1B* shows the model's goodness of fit and strength of prediction. Comparing top and bottom deciles of risk, the observed 2-year mortality rates are 33.2% and 3.3%, respectively. A model that also included UACR and KCCQ-OSS slightly enhanced prediction, c becomes 0.721, and is shown in *Supplementary Table S3B*.

A cardiovascular cause accounted for 55% of all deaths ( $n = 463$ ): 219 in empagliflozin and 244 in placebo with HR = 0.91 (95% CI 0.76-1.09). Using the same eight variables as in the all-cause death model, a risk model for cardiovascular mortality yielded a very similar strength of prediction: c-statistic 0.718 (95% CI 0.694-0.741) (*Supplementary Table S2*).

A summary of our predictive models is presented in the *Central Illustration*.

## **Biomarker combination for risk prediction**

Given the key roles of NT-proBNP and hs-cTnT in determining patient risk of the primary outcome and all-cause death, we explored how risk was affected by both markers. In *Figure 3* and *Supplementary Table S5*, we simultaneously stratified both NT-proBNP and hs-cTnT into thirds of their distribution and then showed how event rates of the primary outcome and all-cause death varied according to these nine patient groups. Patients with both the lowest NT-proBNP and lowest hs-cTnT had a primary event rate of 2.2 per 100 patient-years compared to 19.2 per 100 patient-years in those with highest NT-proBNP and hs-cTnT: a rate ratio of 8.7. For all-cause death, a similar pattern emerged with a rate ratio of 6.3 for comparing the two extremes. There are strikingly consistent monotonic trends in risk for both biomarkers simultaneously for both outcomes. It is noteworthy that the two biomarkers are positively associated with a Pearson correlation of  $r = 0.34$ . It is worth exploring how risk prediction models based on these two biomarkers only (ie ignoring the other predictors in *Tables 1 and 2*) would perform: the c statistics are 0.703 (for primary endpoint) and 0.679 (for death) which are reasonable, but still substantially less than the corresponding 0.748 and 0.715 for the full models.

### **Models by Ejection Fraction Subgroups**

In *Supplementary Tables S6* and *S7* we present separately for patients with LVEF <50% and LVEF  $\geq$ 50%, risk models for the primary outcome and all-cause mortality. There is a notable consistency of findings, whereby all factors show similar strengths of risk prediction for both LVEF categories i.e., <50% and  $\geq$ 50%.

### **External Validation**

External validation was performed in a subset of 1251 patients of the PARAGON-HF trial with available hs-cTnT and NT-proBNP at randomization.<sup>9</sup> A comparison of the relevant baseline variables in EMPEROR-Preserved and PARAGON-HF subset is shown in *Supplementary Table S8*. Patient characteristics were similar between the two trials. *Supplementary Table S8* also compares the PARAGON-HF subset with other PARAGON-HF patients, and shows a broad similarity. In this PARAGON-HF subset over a median follow-up of 24 months, 223 (17.8%) patients had a composite of cardiovascular death or HF hospitalization, 143 (11.4%) patients died of which 82 were cardiovascular deaths.

Applying the EMPEROR-Preserved risk models to the PARAGON-HF population gave c-statistics of 0.711 (0.672-0.749) for the composite of cardiovascular death or HF hospitalization, 0.719 (0.665-0.772) for all-cause death, and 0.718 (0.652-0.784) for cardiovascular death. A monotonic increase in events was observed across quintiles of all three risk score distributions, and the models presented good calibration for all studied outcomes, despite that for all-cause death the observed deaths were lower than expected from the model. See *Figure 4*.

We also applied the EMPEROR-Preserved risk model for HF hospitalization in *Supplementary Table S4A* to the PARAGON-HF subset and achieved  $c=0.712$  (0.668-0.757). Model goodness-of-fit and calibration is shown in *Supplementary Figure S4*

## **DISCUSSION**

The biomarker-driven risk models that we present here provide strong risk discrimination for patients with HFpEF both for HF-related morbidity and mortality, as

summarized in the *Central Illustration*. Their practical value is enhanced by the fact that these models require only two widely available biomarkers and a handful of clinical variables. The implementation of these prognostic models is furtherly facilitated by our *online calculator* (see Supplementary Material), providing risk estimates for each individual patient embedded in routine clinical practice.

We have previously reported on the key roles of NT-proBNP and hs-cTnT in the prognosis of patients with HFrEF.<sup>5</sup> The present work demonstrates that these biomarkers are similarly important in the prediction of risk of patients with HFpEF. There is a dearth of risk models for HFpEF patients, particularly contemporary models that incorporate biomarkers with strong prognostic value.

Elevated levels of NT-proBNP have been associated with poor prognosis in patients with HFpEF. In the PARAGON-HF and I-Preserve trials, NT-proBNP was a robust predictor of cardiovascular death and HF hospitalizations.<sup>10,3</sup> The prognostic value of cardiac troponins in HFpEF is less well established than that of NT-proBNP, but some studies support the strong prognostic value of cardiac troponins in patients with HFpEF.<sup>11-13</sup> Combining NT-proBNP and hs-cTnT adds complementary and independent prognostic information.

Other highly significant predictors of the primary outcome were a recent HF hospitalization, NYHA class III or IV, history of COPD, insulin-treated diabetes, low hemoglobin, and a longer HF duration. Patients with HFpEF, a recent HF hospitalization and worse symptoms have a high risk of subsequent re-hospitalizations and death.<sup>14,15</sup> Patients with HFpEF and COPD have a shared clinical presentation including signs and symptoms (e.g., peripheral edema and breathlessness) and elevated natriuretic peptides. The presence of both conditions

confers a worse prognosis than either disease alone.<sup>16,17</sup> Diabetes mellitus is a frequent comorbidity among HFpEF patients which is associated with a poor prognosis, particularly when requiring insulin for lowering glycemia which occurs more often in long-standing diabetes with difficult glycemic control and concomitant cardiovascular complications.<sup>18</sup> Low hemoglobin levels and anemia are also frequent among patients with HFpEF and associated with worse symptoms and a poor prognosis.<sup>19</sup> A longer duration of HFpEF has been associated with a poor prognosis due to the cumulative organ damage caused by the disease over time.<sup>20</sup>

The all-cause and cardiovascular death risk models had some overlap with the primary outcome model (that also included NT-proBNP and hs-cTnT as the most important predictors, plus COPD, NYHA III or IV, and insulin-treated diabetes). However, three other highly significant independent predictors: lower albumin level, older age and LVEF <50% were retained in the mortality prediction models instead of time since last HF hospitalization, HF duration and low hemoglobin. It has been proposed that low albumin is a useful marker of patient nutritional status, liver and renal dysfunction, and frailty.<sup>21,22</sup> Older age predicts mortality better than it predicts HF hospitalizations; while the former is an inexorable event with ageing, the latter is less dependent on age. It is also noteworthy that across the spectrum of HFpEF patients those with a moderately lower LVEF in the range 41 to 49% do carry a 37% excess mortality risk compared to those with an LVEF  $\geq$ 50%. However, when risk models were separately produced for patients with LVEF below and above 50%, the contributions of the other risk factors were broadly similar.

To the best of our knowledge, only four risk models have been developed for HFpEF: CHARM,<sup>1</sup> MAGGIC,<sup>2</sup> I-Preserve,<sup>3</sup> and 3A3B score.<sup>4</sup> The CHARM and MAGGIC risk scores did not include BNP or NT-proBNP which are the single most



important biomarkers for prognostic assessment in HF. Still, the levels of BNP were added to the MAGGIC score *a posteriori* showing a strong association with outcomes.<sup>2</sup> I-Preserve included NT-proBNP, but the models were rather complex with 12 variables, and they included quality of life scores not routinely performed in clinical practice.<sup>3</sup> The 3A3B score was tested in Japanese patients with LVEF  $\geq 50\%$  from the CHART-2 registry to predict mortality from any cause and included natriuretic peptide levels.<sup>4</sup> Its risk scores did not include cardiac troponins or the combination of natriuretic peptides with cardiac troponins.

It would have been useful to assess the predictive strength of the CHARM, I-Preserve and 3A3B risk models in our two patient cohorts, but this is not possible because some variables are not available. For the MAGGIC risk score we obtained relatively poor risk discrimination for both the primary endpoint and death in both EMPEROR-Preserved and PARAGON-HF cohorts (all c-statistics under 0.64), reflecting that the MAGGIC score was not specifically aimed at preserved-EF heart failure, and was also developed before key biomarkers were routinely recorded.

The prognostic capacity of our risk models was very good with c-statistics ranging from 0.71 to 0.75 for the prediction of mortality and the composite of HF hospitalizations or cardiovascular death, respectively. These models may allow clinicians to accurately predict the event probability in each individual patient in routine clinical practice (using our *online calculator*), potentially allowing to incorporate each patient's risk to better establish follow-up and care plans with patients and their families.

We have also presented risk models for predicting HF hospitalizations only, with a higher c-statistic of 0.79. They have a methodological complication in that all deaths

that happened without a prior HF hospitalization are handled as censorings, so interpretation of these models (like any model of a non-fatal event accompanied by the competing risk of death) is somewhat challenging.

The external validation replicating the good prognostic capacity of these models in a subset of 1251 patients from the PARAGON-HF trial, reinforces the capacity of our models to be applied to different HFpEF populations.

Importantly, our biomarker-driven risk models are simple to use since they rely on only a few readily available clinical variables plus NT-proBNP and hs-cTnT which can be easily obtained in most clinical settings. Our findings support the joint assessment of NT-proBNP and hs-cTnT in the comprehensive risk assessment of all heart failure patients, both HFpEF (as reported here) and HFrEF (as previously reported).<sup>5</sup>

In addition to the variables included in our models, health status assessed by the KCCQ overall summary score and albuminuria had highly significant associations with the studied outcomes; however, we have decided not to incorporate these variables in our final models because they are not routinely measured in clinics and their addition only slightly improved the c-statistics of our models, that were largely driven by NT-proBNP and hs-cTnT.

Despite its prognostic utility, the risk score does not allow to make decisions about whom to treat with empagliflozin because all patients benefit similarly in terms of relative risk reduction; still, patients with a higher baseline risk may experience a greater absolute benefit.

## **Limitations**

Despite the good performance and external validation of our models, both EMPEROR-Preserved and PARAGON-HF are clinical trials with specific eligibility criteria, hence one cannot assume that these findings apply to all HFpEF patients. Specifically, EMPEROR-Preserved excluded 1) patients with de novo HFpEF within 3 months of diagnosis 2) patients with acute decompensated heart failure within the past week and 3) patients with recent MI within 3 months, and hence our risk models are not applicable in any such patients. The latter ensures that a troponin elevation relates to chronic HFpEF and not any recent ACS event.

Our risk models' predictive strength are reasonable but there is inevitable room for improvement. Individual patient risk of death and cardiovascular events can never be fully captured by biomarkers and clinical variables: factors such as frailty, socio-economic status, diet and health care system delivery all play a part.

## **Conclusions**

The combination of NT-proBNP and hs-cTnT with a few readily available clinical variables provide effective risk discrimination both for morbidity and mortality in patients with HFpEF. A predictive tool kit is provided in the Supplementary material to facilitate the ready implementation of our novel risk models in routine clinical practice.

## **Sources of Funding**

The EMPEROR-Reduced trial was supported by Boehringer Ingelheim and Eli Lilly and Company. Dr. Januzzi is supported in part by the Hutter Family Professorship at Harvard Medical School.

## Disclosures

Dr. Januzzi is a Trustee of the American College of Cardiology, a Board member of Imbria Pharmaceuticals, has received grant support from Applied Therapeutics, Innolife, Novartis Pharmaceuticals and Abbott Diagnostics, consulting income from Abbott, Janssen, Novartis, and Roche Diagnostics, and participates in clinical endpoint committees/data safety monitoring boards for Abbott, AbbVie, Amgen, Bayer, CVRx, Janssen, MyoKardia and Takeda. Dr. Butler is a consultant for Abbott, Adrenomed, Amgen, Array, AstraZeneca, Bayer, Boehringer Ingelheim, Bristol Myers Squibb, CVRx, G3 Pharmaceutical, Impulse Dynamics, Innolife, Janssen, LivaNova, Luitpold, Medtronic, Merck, Novartis, NovoNordisk, Relypsa, Roche, V-Wave Limited, and Vifor. Dr. Zannad has recently received steering committee or advisory board fees from Amgen, AstraZeneca, Bayer, Boehringer Ingelheim, Boston Scientific, Cardior, CVRx, Janssen, Livanova, Merck, Mundipharma, Novartis, Novo Nordisk, and Vifor Fresenius. Dr. Filippatos reports lectures and/or Committee Member contributions in trials sponsored by Medtronic, Vifor, Servier, Novartis, Bayer, Amgen, and Boehringer Ingelheim. Dr Ferreira is a consultant for Boehringer Ingelheim. Dr. Pocock is a consultant to Boehringer Ingelheim. Dr Sattar has consulted for Amgen, Astrazeneca, Boehringer Ingelheim, Eli-Lilly, Hanmi Pharmaceuticals, Novo Nordisk, Novartis, Novartis, Sanofi and Pfizer and received grant support from Boehringer Ingelheim. Dr Verma has received research and/or speaking honoraria from Amgen, Amarin, AstraZeneca, Bayer, CMS, Janssen, HLS, Sanofi, Novo Nordisk, Novartis, Merck, and PhaseBio. He is also the president of the Canadian Medical and Surgical Knowledge Translation Research Group and holds the Tier 1 Canada Research Chair in Cardiovascular Surgery. Drs. Vedin and Brueckmann and Ms. Iwata are employees of Boehringer Ingelheim

Pharmaceuticals. Dr. Packer reports personal fees from Boehringer Ingelheim, during the conduct of the study; personal fees from Abbvie, Akcea, Amarin, AstraZeneca, Amgen, Boehringer Ingelheim, Daiichi Sankyo, Johnson & Johnson, Lilly, Novartis, ParatusRx, Pfizer, Relypsa, Sanofi, Synthetic Biologics and Theravance outside the submitted work. Dr. Anker has received fees from Abbott, Bayer, Boehringer Ingelheim, Cardiac Dimension, Cordio, Impulse Dynamics, Novartis, Occlutech, Servier, and Vifor Pharma, and grant support from Abbott and Vifor Pharma. The rest of the authors have no relevant disclosures.

## References

1. Pocock SJ, Wang D, Pfeffer MA, Yusuf S, McMurray JJ, Swedberg KB, Ostergren J, Michelson EL, Pieper KS, Granger CB. Predictors of mortality and morbidity in patients with chronic heart failure. *Eur Heart J*. 2006;27:65-75. doi: 10.1093/eurheartj/ehi555
2. Rich JD, Burns J, Freed BH, Maurer MS, Burkhoff D, Shah SJ. Meta-Analysis Global Group in Chronic (MAGGIC) Heart Failure Risk Score: Validation of a Simple Tool for the Prediction of Morbidity and Mortality in Heart Failure With Preserved Ejection Fraction. *J Am Heart Assoc*. 2018;7:e009594. doi: 10.1161/jaha.118.009594
3. Komajda M, Carson PE, Hetzel S, McKelvie R, McMurray J, Ptaszynska A, Zile MR, Demets D, Massie BM. Factors associated with outcome in heart failure with preserved ejection fraction: findings from the Irbesartan in Heart Failure with Preserved Ejection Fraction Study (I-PRESERVE). In: *Circ Heart Fail*. United States; 2011:27-35.
4. Kasahara S, Sakata Y, Nochioka K, Tay WT, Claggett BL, Abe R, Oikawa T, Sato M, Aoyanagi H, Miura M, et al. The 3A3B score: The simple risk score for heart failure with preserved ejection fraction - A report from the CHART-2 Study. *Int J Cardiol*. 2019;284:42-49. doi: 10.1016/j.ijcard.2018.10.076
5. Pocock SJ, Ferreira JP, Gregson J, Anker SD, Butler J, Filippatos G, Gollop ND, Iwata T, Brueckmann M, Januzzi JL, et al. Novel biomarker-driven prognostic models to predict morbidity and mortality in chronic heart failure: the EMPEROR-Reduced trial. *Eur Heart J*. 2021. doi: 10.1093/eurheartj/ehab579
6. Anker SD, Butler J, Filippatos G, Ferreira JP, Bocchi E, Böhm M, Brunner-La Rocca HP, Choi DJ, Chopra V, Chuquiure-Valenzuela E, et al. Empagliflozin in Heart Failure with a Preserved Ejection Fraction. *N Engl J Med*. 2021. doi: 10.1056/NEJMoa2107038
7. Anker SD, Butler J, Filippatos GS, Jamal W, Salsali A, Schnee J, Kimura K, Zeller C, George J, Brueckmann M, et al. Evaluation of the effects of sodium-glucose co-transporter 2 inhibition with empagliflozin on morbidity and mortality in patients with chronic heart failure and a preserved ejection fraction: rationale for and design of the EMPEROR-Preserved Trial. *Eur J Heart Fail*. 2019;21:1279-1287. doi: 10.1002/ejhf.1596
8. Solomon SD, McMurray JJV, Anand IS, Ge J, Lam CSP, Maggioni AP, Martinez F, Packer M, Pfeffer MA, Pieske B, et al. Angiotensin-Nepriylsin Inhibition in Heart Failure with Preserved Ejection Fraction. *N Engl J Med*. 2019. doi: 10.1056/NEJMoa1908655
9. Gori M, Senni M, Claggett B, Liu J, Maggioni AP, Zile M, Prescott MF, Van Veldhuisen DJ, Zannad F, Pieske B, et al. Integrating High-Sensitivity Troponin T and Sacubitril/Valsartan Treatment in HFpEF: The PARAGON-HF Trial. *JACC Heart Fail*. 2021;9:627-635. doi: 10.1016/j.jchf.2021.04.009
10. Cunningham JW, Vaduganathan M, Claggett BL, Zile MR, Anand IS, Packer M, Zannad F, Lam CSP, Janssens S, Jhund PS, et al. Effects of Sacubitril/Valsartan on N-Terminal Pro-B-Type Natriuretic Peptide in Heart Failure With Preserved Ejection Fraction. *JACC Heart Fail*. 2020;8:372-381. doi: 10.1016/j.jchf.2020.03.002
11. Myhre PL, O'Meara E, Claggett BL, de Denuis S, Jarolim P, Anand IS, Beldhuis IE, Fleg JL, Lewis E, Pitt B, et al. Cardiac Troponin I and Risk of

- Cardiac Events in Patients With Heart Failure and Preserved Ejection Fraction. *Circ Heart Fail.* 2018;11:e005312. doi: 10.1161/circheartfailure.118.005312
12. Gohar A, Chong JPC, Liew OW, den Ruijter H, de Kleijn DPV, Sim D, Yeo DPS, Ong HY, Jaufeerally F, Leong GKT, et al. The prognostic value of highly sensitive cardiac troponin assays for adverse events in men and women with stable heart failure and a preserved vs. reduced ejection fraction. *Eur J Heart Fail.* 2017;19:1638-1647. doi: 10.1002/ejhf.911
  13. Suzuki S, Motoki H, Minamisawa M, Okuma Y, Shoin W, Okano T, Kimura K, Ebisawa S, Okada A, Kuwahara K. Prognostic significance of high-sensitivity cardiac troponin in patients with heart failure with preserved ejection fraction. *Heart Vessels.* 2019;34:1650-1656. doi: 10.1007/s00380-019-01393-2
  14. Vaduganathan M, Claggett BL, Desai AS, Anker SD, Perrone SV, Janssens S, Milicic D, Arango JL, Packer M, Shi VC, et al. Prior Heart Failure Hospitalization, Clinical Outcomes, and Response to Sacubitril/Valsartan Compared With Valsartan in HFpEF. *J Am Coll Cardiol.* 2020;75:245-254. doi: 10.1016/j.jacc.2019.11.003
  15. Dalos D, Mascherbauer J, Zotter-Tufaro C, Duca F, Kammerlander AA, Aschauer S, Bonderman D. Functional Status, Pulmonary Artery Pressure, and Clinical Outcomes in Heart Failure With Preserved Ejection Fraction. *J Am Coll Cardiol.* 2016;68:189-199. doi: 10.1016/j.jacc.2016.04.052
  16. Marcun R, Stankovic I, Vidakovic R, Farkas J, Kadivec S, Putnikovic B, Ilic I, Neskovic AN, Lainscak M. Prognostic implications of heart failure with preserved ejection fraction in patients with an exacerbation of chronic obstructive pulmonary disease. *Intern Emerg Med.* 2016;11:519-527. doi: 10.1007/s11739-015-1319-0
  17. Mooney L, Hawkins NM, Jhund PS, Redfield MM, Vaduganathan M, Desai AS, Rouleau JL, Minamisawa M, Shah AM, Lefkowitz MP, et al. Impact of Chronic Obstructive Pulmonary Disease in Patients With Heart Failure With Preserved Ejection Fraction: Insights From PARAGON-HF. *J Am Heart Assoc.* 2021;10:e021494. doi: 10.1161/jaha.121.021494
  18. Shen L, Rørth R, Cosmi D, Kristensen SL, Petrie MC, Cosmi F, Latini R, Køber L, Anand IS, Carson PE, et al. Insulin treatment and clinical outcomes in patients with diabetes and heart failure with preserved ejection fraction. *Eur J Heart Fail.* 2019;21:974-984. doi: 10.1002/ejhf.1535
  19. Gupta K, Kalra R, Rajapreyar I, Joly JM, Pate M, Cribbs MG, Ather S, Prabhu SD, Bajaj NS. Anemia, Mortality, and Hospitalizations in Heart Failure With a Preserved Ejection Fraction (from the TOPCAT Trial). *Am J Cardiol.* 2020;125:1347-1354. doi: 10.1016/j.amjcard.2020.01.046
  20. Owan TE, Hodge DO, Herges RM, Jacobsen SJ, Roger VL, Redfield MM. Trends in prevalence and outcome of heart failure with preserved ejection fraction. *N Engl J Med.* 2006;355:251-259. doi: 10.1056/NEJMoa052256
  21. Liu M, Chan CP, Yan BP, Zhang Q, Lam YY, Li RJ, Sanderson JE, Coats AJ, Sun JP, Yip GW, et al. Albumin levels predict survival in patients with heart failure and preserved ejection fraction. *Eur J Heart Fail.* 2012;14:39-44. doi: 10.1093/eurjhf/hfr154
  22. Prenner SB, Kumar A, Zhao L, Cvijic ME, Basso M, Spires T, Li Z, Yarde M, Bhattacharya P, Zamani P, et al. Effect of Serum Albumin Levels in Patients With Heart Failure With Preserved Ejection Fraction (from the TOPCAT Trial). *Am J Cardiol.* 2020;125:575-582. doi: 10.1016/j.amjcard.2019.11.006



Table 1: The EMPEROR-Preserved risk model for the Primary Outcome (HF hospitalization or cardiovascular death)

<b>Variables</b>	<b>Hazard ratio (95% CI)</b>	<b>Chi-squared statistic</b>	<b>Coefficient (SE)*</b>	<b>P-value</b>
Log NT-proBNP [pg/mL]	1.61 (1.49, 1.74)	144.7	0.48 (0.04)	<.0001
Log hs-cTnT [ng/L]	1.59 (1.44, 1.75)	90.5	0.46 (0.05)	<.0001
Time since most recent HHF				
>6 months	1.00 (reference)			<.0001
3-6 months	1.71 (1.36, 2.15)	21.4	0.54 (0.12)	
<3 months	1.95 (1.64, 2.31)	57.8	0.67 (0.09)	
NYHA class III/IV	1.67 (1.45, 1.92)	49.8	0.51 (0.07)	<.0001
History of COPD	1.70 (1.45, 1.99)	43.3	0.53 (0.08)	<.0001
Use of Insulin in DM patients				
Non-DM	1.00 (reference)			<.0001

<b>Variables</b>	<b>Hazard ratio (95% CI)</b>	<b>Chi-squared statistic</b>	<b>Coefficient (SE)*</b>	<b>P-value</b>
DM + no insulin	1.14 (0.98, 1.32)	2.8	0.13 (0.08)	
DM + insulin	1.61 (1.35, 1.92)	28.9	0.48 (0.09)	
<b>Baseline haemoglobin</b>				
>=12 [g/dL]	1.00 (reference)			<.0001
<12 [g/dL]	1.42 (1.23, 1.64)	22.0	0.35 (0.07)	
<b>Time since HF diagnosis</b>				
3 months-1 year	1.00 (reference)			0.0002
>=1 year	1.41 (1.20, 1.66)	17.1	0.34 (0.08)	
Randomized to Empagliflozin	0.75 (0.66, 0.86)	18.6	-0.29 (0.07)	<.0001

\*Coefficient (SE) are the log hazard ratio and its standard error

An estimate of each individual's 2-year risk can be calculated as follows: 1 -

$[0.99932^{\exp (0.46 \times \log \text{hs-cTnT} + 0.48 \times \log \text{NT-proBNP} + 0.51 \times \text{NYHA class} + 0.54 \times \text{recent HHF1} + 0.67 \times \text{recent HHF2} + 0.53 \times \text{COPD} + 0.48 \times \text{DM (insulin)} + 0.13 \times \text{DM (without insulin)} + 0.34 \times \text{HF diagnosis} + 0.35 \times \text{haemoglobin} - 0.29 \times \text{Empagliflozin})]$ , where 'recent HHF1' and 'recent HHF2' are indicator variables for whether the most recent HHF was within 3–6 months or <3 months, respectively.

NYHA is an indicator variable for whether the patient's NYHA class is III or IV. COPD and empagliflozin are indicator variables for whether the patient has COPD or is to be treated with empagliflozin, respectively. DM (insulin) and DM (without insulin) are

indicator variables for whether patient has diabetes and use of insulin at baseline or has diabetes without use of insulin. HF diagnosis is indicator variable for whether time since HF diagnosis is  $\geq 1$  year. Haemoglobin is an indicator variable for whether baseline haemoglobin is  $< 12$  g/dL. CI, confidence interval; HF, heart failure; HHF, hospitalization for heart failure; hs-cTnT, high-sensitivity cardiac troponin T; NT-proBNP, N-terminal pro B-type natriuretic peptide; NYHA, New York Heart Association; SE, standard error.

C-statistic (95%CI): 0.748 (0.732,0.764)

Table 2: The EMPEROR-Preserved risk model for all-cause mortality

<b>Variables</b>	<b>Hazard ratio (95% CI)</b>	<b>Chi-squared statistic</b>	<b>Coefficient (SE)<sup>*</sup></b>	<b>P-value</b>
Log hs-cTnT [ng/L]	1.52 (1.38,1.68)	68.6	0.42 (0.05)	<.0001
Log NT-proBNP [pg/mL]	1.40 (1.30,1.52)	67.6	0.34 (0.04)	<.0001
History of COPD	1.71 (1.45,2.01)	40.8	0.54 (0.08)	<.0001
Baseline Albumin (per 0.1 decrease below 4.5) [g/dL]	1.07 (1.05, 1.10)	39.3	0.07 (0.01)	<.0001
LVEF				<.0001
>=50 %	1.00 (reference)			
<50 %	1.37 (1.19, 1.57)	18.8	0.31 (0.07)	
Age				
<65 years	1.00 (reference)			<.0001
65 to <75 years	1.20 (0.97, 1.49)	2.9	0.18 (0.11)	
>=75 years	1.57 (1.28, 1.92)	18.6	0.45 (0.10)	
NYHA class III/IV	1.39 (1.20,1.62)	18.1	0.33 (0.08)	<.0001
Use of Insulin in DM patients				0.0006
Non-DM	1.00 (reference)			
DM + no insulin	1.02 (0.88, 1.20)	0.08	0.02 (0.08)	

DM + insulin	1.42 (1.18, 1.71)	13.6	0.35 (0.10)
--------------	-------------------	------	-------------

---

\*Coefficient (SE) are the log hazard ratio and its standard error

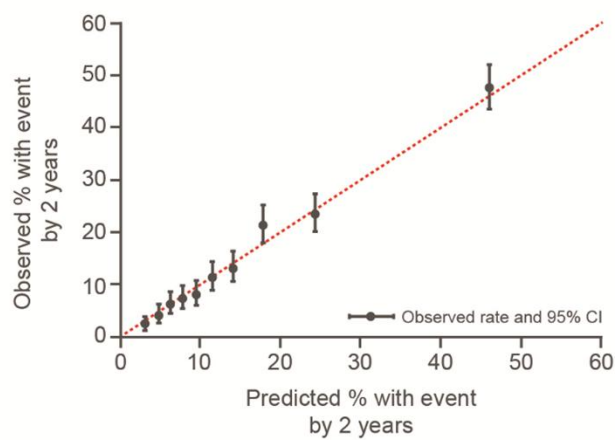
An estimate of each individual's 2-year risk can be calculated as follows:  $1 - [0.99859^{\exp (0.42 \times \log \text{hs-cTnT} + 0.34 \times \log \text{NT-proBNP} + 0.33 \times \text{NYHA class} + 0.54 \times \text{COPD} + 0.07 \times ((4.5 - \text{Albumin})/0.1) + 0.18 \times \text{Age1} + 0.45 \times \text{Age2} + 0.31 \times \text{LVEF} + 0.35 \times \text{DM (insulin)} + 0.02 \times \text{DM (without insulin)})]$ , where 'Age1' and 'Age2' are indicator variables for whether patient's age is 65 to <75 or  $\geq 75$  years old, respectively. NYHA is an indicator variable for whether the patient's NYHA class is III or IV. COPD is indicator variables for whether the patient has COPD. LVEF is an indicator variable for whether patient has LVEF <50%. DM (insulin) and DM (without insulin) are indicator variables for whether patient has diabetes and use of insulin at baseline or has diabetes without use of insulin. CI, confidence interval; HF, heart failure; HHF, hospitalization for heart failure; hs-cTnT, high-sensitivity cardiac troponin T; NT-proBNP, N-terminal pro B-type natriuretic peptide; NYHA, New York Heart Association; SE, standard error.

C-statistic (95%CI): 0.715 (0.697,0.733)

Figure 1: Observed vs. predicted events by tenths of the risk score distribution

Hosmer–Lemeshow goodness-of-fit test  $P = 0.198$  for the primary outcome (A) and  $P = 0.039$  for all-cause mortality (B), indicating adequate calibration. CI, confidence interval

**A** Primary outcome



**B** All-cause mortality

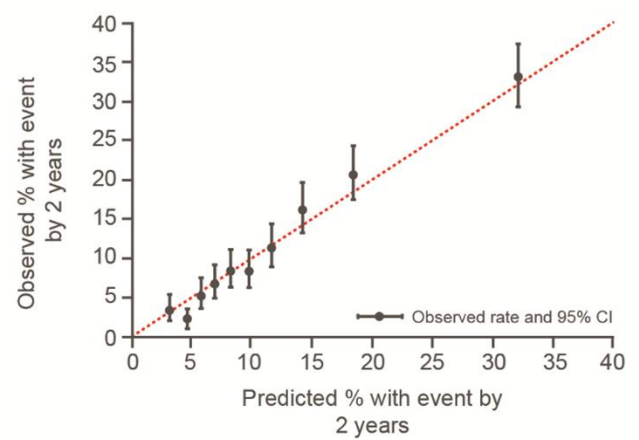


Figure 2: Hazard ratios and rate differences for empagliflozin versus placebo for the primary outcome according to thirds of the risk score distribution

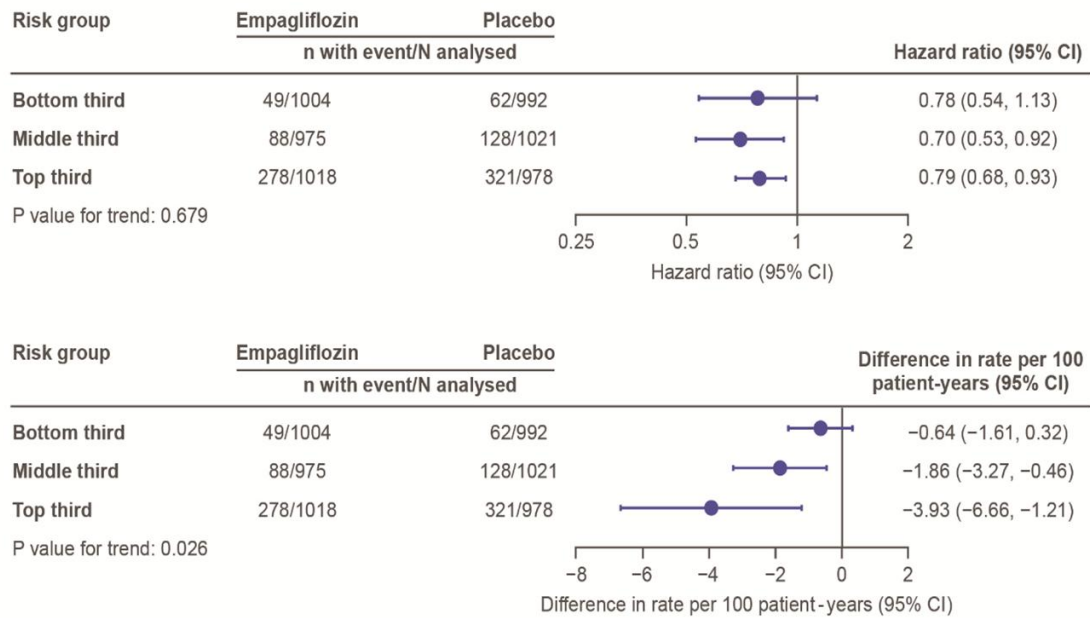


Figure 3: Incidence rates of (A) the primary outcome and (B) all-cause death for patients simultaneously grouped in thirds of NT-proBNP and hs-cTnT

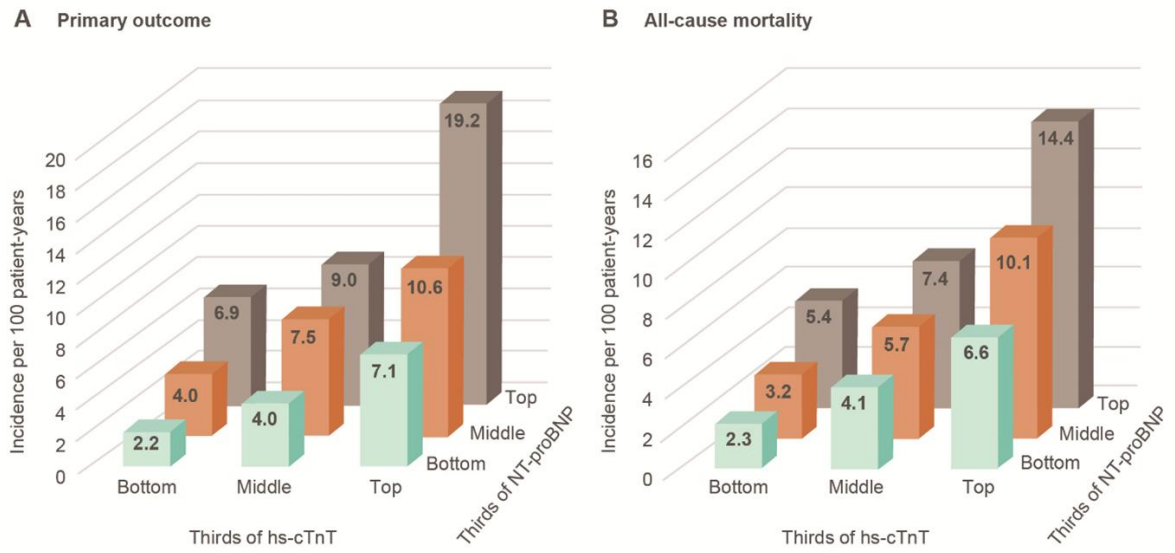
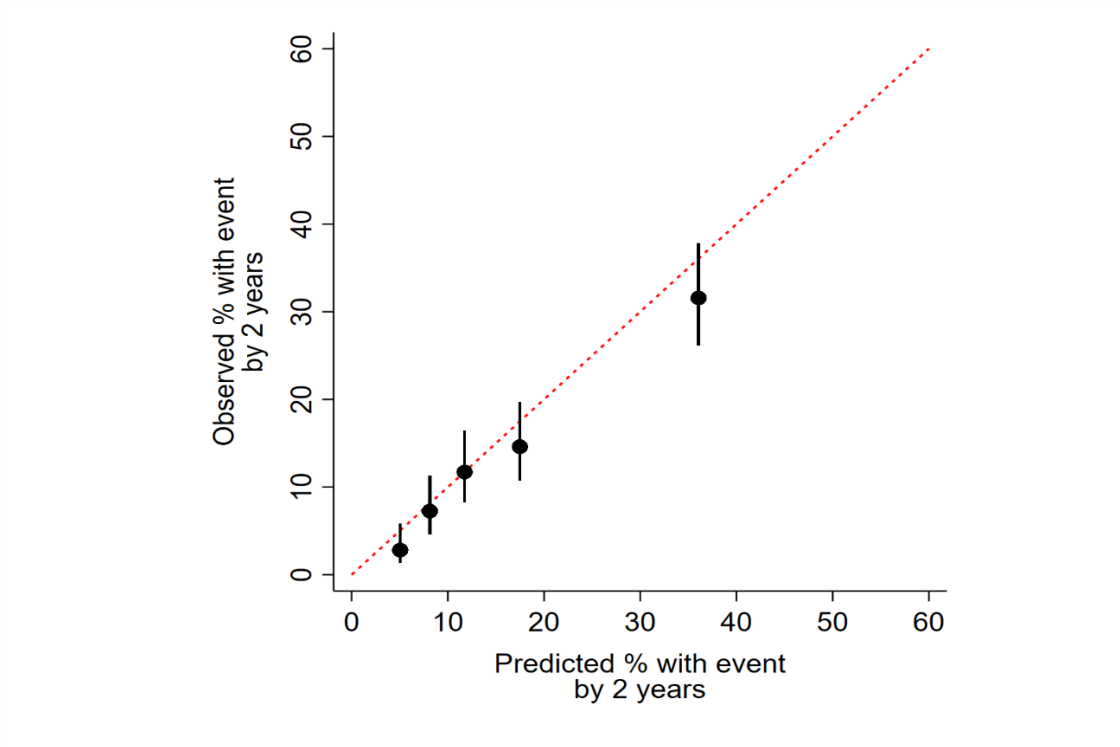


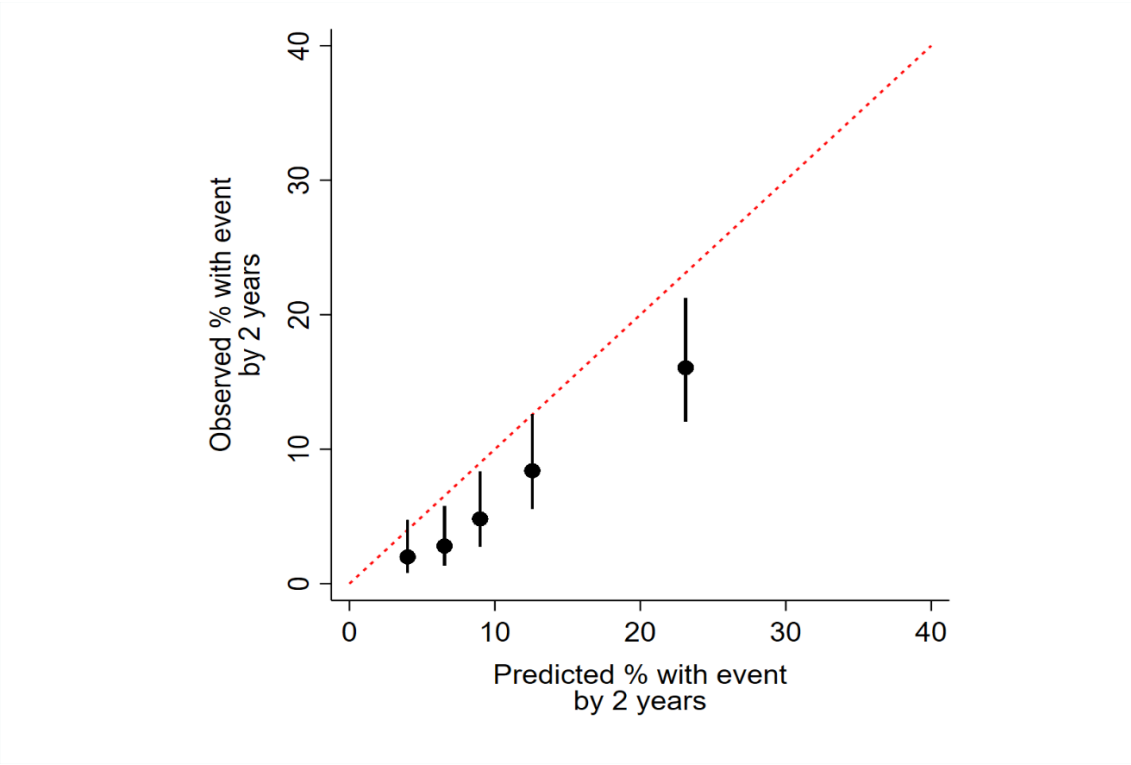


Figure 4. Observed vs. predicted events by fifths of the risk score distribution in PARAGON-HF

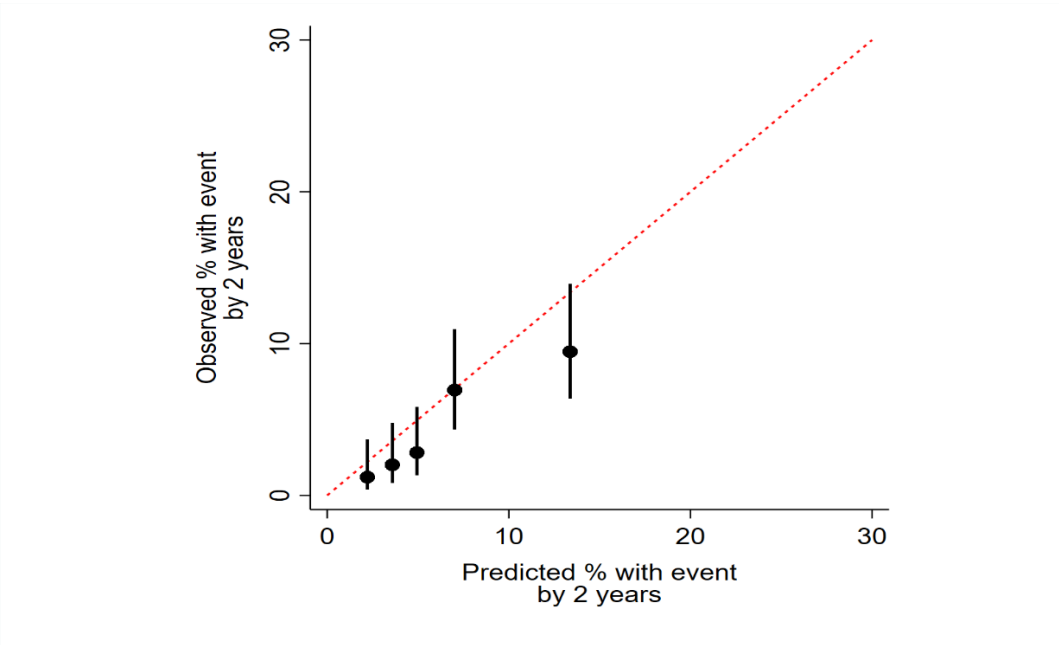
A. Primary outcome: cardiovascular death or heart failure hospitalization



B. All-cause death



C. Cardiovascular death



## Central Illustration

### Prediction of cardiovascular death or HF hospitalization with 8 variables:

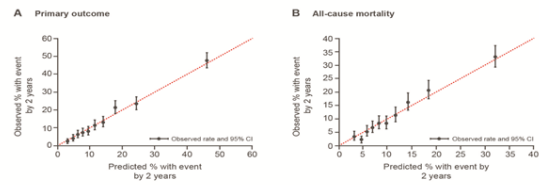
1. NT-proBNP
2. hs-cTnT
3. Time since last HF hospitalization
4. NYHA class III/IV
5. History of COPD
6. Insulin-treated diabetes
7. Hemoglobin <12 g/dL
8. HF diagnosis  $\geq 1$  year

### Prediction of all-cause and cardiovascular mortality with 8 variables:

1. NT-proBNP
2. hs-cTnT
3. History of COPD
4. Albumin
5. LVEF <50%
6. Age  $\geq 75$  years
7. NYHA class III/IV
8. Insulin-treated diabetes

Online risk calculator

### Patients in the top tenth of risk had event rates >10x higher than those in the bottom tenth



### NT-proBNP and hs-cTnT combination discriminates patients' risk

