



HAL
open science

Cardiac remodelling – Part 1: From cells and tissues to circulating biomarkers. A review from the Study Group on Biomarkers of the Heart Failure Association of the European Society of Cardiology

Arantxa González, A. Mark Richards, Rudolf A de Boer, Thomas Thum, Henrike Arfsten, Martin Hülsmann, Inês Falcao-Pires, Javier Díez, Roger S.Y. Foo, Mark Y Chan, et al.

► **To cite this version:**

Arantxa González, A. Mark Richards, Rudolf A de Boer, Thomas Thum, Henrike Arfsten, et al.. Cardiac remodelling – Part 1: From cells and tissues to circulating biomarkers. A review from the Study Group on Biomarkers of the Heart Failure Association of the European Society of Cardiology. European Journal of Heart Failure, 2022, 24 (6), pp.927-943. 10.1002/ejhf.2493 . hal-03800912

HAL Id: hal-03800912

<https://hal.univ-lorraine.fr/hal-03800912>

Submitted on 6 Oct 2022

HAL is a multi-disciplinary open access archive for the deposit and dissemination of scientific research documents, whether they are published or not. The documents may come from teaching and research institutions in France or abroad, or from public or private research centers.

L'archive ouverte pluridisciplinaire **HAL**, est destinée au dépôt et à la diffusion de documents scientifiques de niveau recherche, publiés ou non, émanant des établissements d'enseignement et de recherche français ou étrangers, des laboratoires publics ou privés.

Cardiac Remodelling Part 1:

From Cells and Tissues to Circulating Biomarkers

A review from the Study Group on Biomarkers of the Heart Failure Association of the ESC

Arantxa González^{1,2}, A Mark Richards^{3,4}, Rudolf A de Boer⁵, Thomas Thum^{6,7}, Henrike Arfsten^{8,9}, Martin Hülsmann⁸, Inês Falcao-Pires¹⁰, Javier Díez^{1,2,11}, Roger SY Foo³, Mark Y Chan³, Alberto Aimo^{12,13}, Chukwuemeka G Anene-Nzelu^{3,14}, Magdy Abdelhamid¹⁵, Stamatis Adamopoulos¹⁶, Stefan D Anker¹⁷, Yuri Belenkov¹⁸, Tuvia B Gal¹⁹, Alain Cohen-Solal²⁰, Michael Böhm²¹, Ovidiu Chioncel²², Victoria Delgado²³, Michele Emdin^{12,13}, Ewa A Jankowska²⁴, Finn Gustafsson²⁵, Loreena Hill²⁶, Tiny Jaarsma²⁷, James L Januzzi²⁸, Pardeep S Jhund²⁹, Yuri Lopatin³⁰, Lars H Lund³¹, Marco Metra³², Davor Milicic³³, Brenda Moura^{34,35}, Christian Mueller³⁶, Wilfried Mullens³⁷, Julio Núñez³⁸, Massimo F Piepoli³⁹, Amina Rakisheva⁴⁰, Arsen D Ristic⁴¹, Patrick Rossignol⁴², Gianluigi Savarese³¹, Carlo G Tocchetti⁴³, Sophie Van Linthout^{9,44}, Maurizio Volterrani⁴⁵, Petar Seferovic^{46,47}, Giuseppe Rosano⁴⁸, Andrew JS Coats⁴⁹, Antoni Bayes-Genis^{2,50,51}.

Affiliations: ¹Program of Cardiovascular Diseases, CIMA Universidad de Navarra, Pamplona, Spain; ²IdiSNA, Navarra Institute for Health Research, Pamplona, Spain; ³CIBERCV, Carlos III Institute of Health, Madrid, Spain; ⁴Department of Medicine, Yong Loo-Lin School of Medicine, National University of Singapore, Singapore; ⁵Christchurch Heart Institute, University of Otago, New Zealand; ⁶University Medical Center Groningen, University of Groningen, Department of Cardiology, Groningen, The Netherlands; ⁷Institute of Molecular and Translational Therapeutic Strategies (IMTTS) and Rebirth Center for Translational Regenerative Therapies, Hannover Medical School, Hannover, Germany; ⁸Fraunhofer Institute of Toxicology and Experimental Medicine, Hannover, Germany; ⁹Clinical Division of Cardiology, Department of Internal Medicine II, Medical University of Vienna, Vienna, Austria; ¹⁰German Centre for Cardiovascular Research (DZHK), partner site Berlin, Germany; ¹¹Department of Surgery and Physiology, Cardiovascular Research and Development Center, Faculty of Medicine of the University of Porto, Porto, Portugal; ¹²Departments of Cardiology and Cardiac Surgery, and Nephrology, Clínica Universidad de Navarra, Pamplona, Spain; ¹³Institute of Life Sciences, Scuola Superiore Sant'Anna, Pisa, Italy; ¹⁴Cardiology Division, Fondazione Toscana Gabriele Monasterio, Pisa, Italy; ¹⁵Montreal Heart Institute, Montreal, Canada; ¹⁶Faculty of Medicine, Cairo University, Egypt; ¹⁷2nd Department of Cardiovascular Medicine, Onassis Cardiac Surgery Center, Athens, Greece; ¹⁸Department of Cardiology (CVK), and Berlin Institute of Health Center for Regenerative therapies (BCRT), German Centre for Cardiovascular Research (DZHK) partner site Berlin, Charité Universitätsmedizin, Berlin, Germany; ¹⁹Lomonosov Moscow State University, Moscow, Russia; ²⁰Cardiology Department, Rabin Medical Center, Beilinson, Israel; ²¹Hospital Lariboisière, Paris, France; ²²Universitätsklinikum des Saarlandes, Klinik für Innere Medizin III, Kardiologie, Angiologie und Internistische

Intensivmedizin, Saarland University, Homburg/Saar, Germany; ²²Emergency Institute for Cardiovascular Diseases ‘Prof. C.C. Iliescu’ Bucharest; University of Medicine Carol Davila, Bucharest, Romania; ²³Department of Cardiology, Leiden University Medical Center, Leiden, The Netherlands; ²⁴Institute of Heart Diseases, Wroclaw Medical University, Wroclaw, Poland; ²⁵Rigshospitalet-Copenhagen University Hospital, Heart Centre, Department of Cardiology, Copenhagen, Denmark; ²⁶Queen's University Belfast, Belfast, UK; ²⁷Linköping University, Linköping, Sweden; ²⁸Massachusetts General Hospital and Baim Institute for Clinical Research, Boston, Massachusetts, USA; ²⁹BHF Glasgow Cardiovascular Research Centre, University of Glasgow, Glasgow, Scotland; ³⁰Volgograd State Medical University, Volgograd, Russia; ³¹Department of Medicine, Karolinska Institutet, and Department of Cardiology, Karolinska University Hospital, Stockholm, Sweden; ³²Cardiology. ASST Spedali Civili; Department of Medical and Surgical Specialties, Radiological Sciences and Public Health, University of Brescia, Italy; ³³University of Zagreb, School of Medicine, Zagreb, Croatia; ³⁴Faculty of Medicine, University of Porto, Portugal; ³⁵Cardiology Department, Porto Armed Forces Hospital, Portugal; ³⁶Department of Cardiology, University Hospital, Basel, Switzerland; ³⁷Hospital Oost-Limburg, Genk, Belgium; ³⁸Hospital Clínico Universitario de Valencia, INCLIVA, Universidad de Valencia, Valencia, Spain; ³⁹Cardiology Division, Castelsangiovanni Hospital, Castelsangiovanni, Italy; ⁴⁰Scientific Research Institute of Cardiology and Internal Medicine, Almaty, Kazakhstan; ⁴¹Department of Cardiology, Universtiy Clinical Center of Serbia, Belgrade, Serbia; ⁴²Centre d'Investigations Cliniques - Plurithématique 1433, and Inserm U1116, CHRU Nancy, F-CRIN INI-CRCT, Nancy, France; ⁴³Cardio-Oncology Unit, Department of Translational Medical Sciences, Center for Basic and Clinical Immunology Research (CISI), Interdepartmental Center of Clinical and Translational Sciences (CIRCET), Interdepartmental Hypertension Research Center (CIRIAPA); ⁴⁴Berlin Institute of Health (BIH) at Charité - Universitätsmedizin Berlin, BIH Center for Regenerative Therapies (BCRT), Berlin, Germany; ⁴⁵IRCCS San Raffaele, Rome, Italy; ⁴⁶Faculty of Medicine, University of Belgrade, Belgrade, Serbia; ⁴⁷Serbian Academy of Sciences and Arts, Belgrade, Serbia; ⁴⁸St. George's Hospitals, NHS Trust, University of London, London, UK; ⁴⁹University of Warwick, Coventry, UK; ⁵⁰Institut del Cor, Hospital Universitari Germans Trias i Pujol, Badalona, Barcelona, Spain; ⁵¹Department of Medicine, Universitat Autònoma de Barcelona, Barcelona, Spain.

Word count: 5427 (excluding abstract, funding, conflicts, references and figure legends); 4 figures & 1 Table; 183 references

Correspondence to: Arantxa González (amiqueo@unav.es), CIMA Universidad de Navarra, Pamplona (Spain) and Antoni Bayés-Genís (abayesgenis@gmail.com), Hospital Universitari Germans Trias i Pujol, Badalona, (Spain).

ABSTRACT

Cardiac remodelling refers to changes in left ventricular (LV) structure and function over time, with a progressive deterioration that may lead to heart failure (HF) development (adverse remodelling) or *vice versa* a recovery (reverse remodelling) in response to HF treatment. Adverse remodelling predicts a worse outcome, whilst reverse remodelling predicts a better prognosis. The geometry, systolic and diastolic function and electric activity of the left ventricle are affected, as well as the left atrium and on the long term even right heart chambers. At a cellular and molecular level, remodelling involves all components of cardiac tissue: cardiomyocytes, fibroblasts, endothelial cells and leukocytes. The molecular, cellular and histological signatures of remodelling may differ according to the cause and severity of cardiac damage, and clearly to the global trend toward worsening or recovery. These processes cannot be routinely evaluated through endomyocardial biopsies, but may be reflected by circulating levels of several biomarkers. Different classes of biomarkers (e.g., proteins, non-coding RNAs, metabolites and/or epigenetic modifications) and several biomarkers of each class might inform on some aspects on HF development, progression and long-term outcomes, but most have failed to enter clinical practice. This may be due to the biological complexity of remodelling, so that no single biomarker could provide great insight on remodelling when assessed alone. Another possible reason is a still incomplete understanding of the role of biomarkers in the pathophysiology of cardiac remodelling. Such role will be investigated in the first part of review paper on biomarkers of cardiac remodelling.

Adverse cardiac remodelling occurs in response to an acute myocardial injury or to chronic systemic stressors and comorbidities (e.g., hypertension, diabetes, chronic kidney disease) imposing a chronic stress on the heart via mechanical or hyperdynamic overload, neurohumoral activation, inflammation, metabolic disturbances and potentially many other factors. It is the consequence of a complex series of transcriptional, signalling, structural, and functional events at the cellular and tissue level that affect cardiac size, mass, geometry, function and electrical activity¹. At first, these responses may be adaptive, but become maladaptive and cause further myocardial damage in a vicious circle when sustained over time. Cardiac remodelling may occur across the entire spectrum of heart failure (HF) and in several cardiac pathologies, representing a rationale target for therapy. Of note, some features of cardiac remodelling differ depending on the triggering injury as well as between patients with preserved vs. reduced left ventricular (LV) ejection fraction (HFpEF and HFrEF), being associated with different biomarker profiles; however, evaluating changes associated with specific HF phenotypes or cardiomyopathies is beyond the scope of this review.

Adverse remodelling is associated with progressive cardiac structural abnormalities and an impairment of cardiac function. Adverse remodelling can be - partially or completely - reversed by treatments controlling risk factors such as hypertension, drugs acting on some of the neurohumoral factors involved in cardiac remodelling (e.g. inhibitors of the renin-angiotensin-aldosterone system), as well as by percutaneous or surgical interventions and device implantation. Reverse remodelling is frequently accompanied by beneficial changes in molecular, metabolic and extracellular matrix (ECM) properties of the myocardium^{2,3}.

Cardiac remodelling affects all cell types in the heart (cardiomyocytes, fibroblasts, endothelial cells [ECs] and leukocytes), and entails a metabolic switch and alterations in mitochondrial bioenergetics^{10,11}. Cardiomyocytes may display contractile dysfunction, hypertrophy or death. Activation of cardiac fibroblasts leads to excessive collagen deposition and fibrosis, either as a direct response to damage (reactive fibrosis) or to replace the loss of cardiomyocytes (replacement fibrosis). Microvascular endothelial dysfunction increase reactive oxygen species (ROS) production, promote leukocyte infiltration, and lead to capillary rarefaction and tissue hypoxia. Moreover, in addition to recruited immune cells, resident macrophages may modify their profile and interact with both myocytes and non-myocytes promoting cellular and molecular alterations.

Indeed, there is a complex intercellular cross-talk among the different cell types present in the myocardium through cytokines, growth factors, non-coding RNAs and mechano-transduction pathways¹². Some of these changes in the myocardial tissue may be monitored by measuring circulating biomarkers.

The National Institute of Health defined a biomarker (abbreviation of “biological marker”) as “a characteristic that is objectively measured and evaluated as an indicator of normal biological processes, pathogenic processes, or pharmacologic responses to a therapeutic intervention”⁴. Circulating biomarkers (measured in body fluids) are easily available and reproducible tools for large-scale trials and clinical practice. Given that cardiac tissue is not usually available for direct evaluation, circulating biomarkers measured in different body fluids such as serum, plasma, urine, pericardial fluid or coronary sinus can provide useful information^{5,6}. Cells and mechanisms involved change dynamically over time depending on the triggering factor leading to remodelling and cardiac dysfunction, and cardiac remodelling involves alterations in different cell types and components. Therefore, a panel of multiple biomarkers is better suited to characterize the remodelling process than any single biomarker.

A large number of circulating biomarkers has been proposed to refine the management of HF patients^{6,7}, but very few biomarkers have been thoroughly studied, and most have failed to enter clinical practice^{6,8}. Understanding the mechanisms of release, the main source of systemic concentrations (cardiac versus non-cardiac), and the pathophysiological significance of each marker is essential for their optimal interpretation. For example, almost all currently available circulating biomarkers other than cardiac natriuretic peptides and troponins are not cardiac-specific, and their circulating levels may reflect systemic as well as cardiac perturbations^{8,9}.

This two-part review from the Study Group on Biomarkers of the Heart Failure Association (HFA) of the ESC is devoted to biomarkers of cardiac remodelling. This first part will focus on the main biomarkers related to the cellular and molecular alterations involved in cardiac remodelling. We will review the biomarkers derived from the major cardiac cell types (i.e., cardiomyocytes, fibroblasts, EC and immune cells) in response to injury and or stress. We will then discuss novel biomarkers involved in autocrine and paracrine cellular communication such as non-coding RNAs or extracellular vesicles. Finally, we will address novel potential biomarkers identified

through high throughput “-omic” approaches including transcriptomics, proteomics and metabolomics.

Cardiomyocytes

Myocardial stretch, death, oxidative stress and inflammation affecting cardiomyocytes are central mechanisms in cardiac remodelling and HF. Assessing biomarkers related to these processes may allow to explore the mechanisms and progression of myocardial disease (Figure 1).

In response to increased atrial or ventricular wall tension, cardiomyocytes secrete natriuretic peptides. The mature biologically active natriuretic peptides (NP) are obtained after the release of their amino-terminal portion (i.e., pro-B-type natriuretic peptide [BNP] is split into NT-proBNP and BNP). We will focus on BNP and NT-proBNP as the most studied NPs, since atrial natriuretic peptide (ANP) is more difficult to measure. When secreted, NPs promote myocardial relaxation, natriuresis and vasodilatation and blunt the activity of both the renin-angiotensin-aldosterone (RAS) and sympathetic nervous systems¹³. Plasma concentrations of all circulating NPs and their second messenger (cyclic guanosine monophosphate; cGMP) increase in response to increased atrial or ventricular wall tension and proportionally to the extent and severity of LV systolic and diastolic dysfunction¹³. This is related to the mechanisms that control proBNP expression, including stimulation by hormones such as endothelin and angiotensin II, as well as by cytokines and myocardial hypoxia¹³. Importantly, longitudinal changes in NT-proBNP are associated with left atrial and LV reverse remodelling in HF patients with reduced ejection fraction¹⁴⁻¹⁶. Thus, BNP and NT-proBNP are currently accepted as hallmark diagnostic and prognostic biomarkers for HF across the whole spectrum of LV ejection fraction. Their measurement is included in the all guidelines for HF management¹⁷, and they are frequently utilized as inclusion criteria and surrogate endpoints in early-phase clinical trials.

Cardiac troponins (cTnI and cTnT) are released upon cardiomyocyte injury, necrosis, or apoptosis, and may also leak from injured but still viable cardiomyocytes due to increased plasma membrane permeability¹⁸. The high-sensitivity troponins assays can predict the incidence of cardiac events (including HF hospitalization) and cardiovascular and all-cause mortality^{19,20}. Increased high-sensitivity cardiac troponin T (hs-cTnT) is associated with poor outcomes (e.g., cardiovascular death and HF

rehospitalization) in patients with either HFpEF or HFrEF²¹. Combined with NT-proBNP, hs-cTnT can be used to identify maladaptive asymptomatic LV hypertrophy, associated with a high risk of incident HF and cardiovascular death²². Moreover, longitudinal changes in hs-cTnT are associated with left atrial and LV reverse remodelling in patients with HFrEF¹⁴.

Cardiomyocyte hypertrophy is one of the main features of cardiac remodelling and is associated with the expression of foetal gene isoforms. Several signalling pathways are responsible for the coordinated control of the hypertrophic response. These include the adrenergic system, RAS, NP, ROS, adhesion and cytoskeletal proteins, the interleukin-6 (IL-6) cytokine family, MEK-ERK1/2 signalling, histone acetylation and calcium-mediated modulation²³

Numerous inflammatory cytokines are released in response to myocardial injury, as discussed in the following sections. Some pro-inflammatory cytokines can stimulate the production of cardiomyocyte-derived factors that hold potential as biomarkers of cardiac remodelling. This is the case of the soluble form of ST2 or interleukin-1 receptor-like 1, a molecule released by the lungs and the endothelium in response to hemodynamic stress and inflammation, which is also produced by cardiomyocytes in response to IL-1 β and mechanical strain²⁴. sST2 is then an indicator of cardiac and pulmonary vascular overload.

Growth-differentiation factor-15 (GDF-15) is involved in several of the mechanisms underlying cardiac remodelling²⁵. GDF-15 shares some mechanisms of regulation with BNP, being produced by cardiomyocytes and other cells in response to myocardial injury, stretch, proinflammatory cytokines and neurohormones, such as angiotensin II²⁶. GDF-15 might play a role in cardiac hypertrophy, endothelial dysfunction and fibrosis, although whether GDF-15 is a protective or detrimental factor is debated²⁵. GDF-15 is associated with incident HF in the general population and poor outcomes in HF patients²⁷. For example, higher GDF-15 levels were associated with a higher risk of cardiovascular death and HF hospitalization in patients with either HFpEF or HFrEF²⁸. Of note, it adds prognostic information over clinical risk factors in patients with acute coronary syndrome²⁹. The effects of drug treatments on GDF-15 concentrations in chronic HF remain elusive, while LV assist-device implantation can lead to a significant decrease of circulating GDF-15 in patients with advanced HFrEF^{27,30}.

Cardiomyocytes also release extracellular vesicles and non-coding RNAs that are potential biomarkers and act as mediators via autocrine and paracrine actions in cardiomyocytes and other cardiac cells. These aspects will be further discussed in the following sections.

Fibroblasts and the extracellular matrix

Activated cardiac fibroblasts and myofibroblasts secrete high amounts of structural (e.g., collagens and fibronectin) and matricellular proteins, as well as enzymes, growth factors, cytokines, and non-coding RNAs, leading to an intense deposition of collagen fibres and subsequent myocardial fibrosis³¹. In addition, molecules secreted by cardiac fibroblasts can influence other cardiac cells including cardiomyocytes, macrophages and endothelial cells^{32,33}. Cardiac fibroblasts can be activated through different pathways³⁴ in response to local cardiac injury and systemic alterations such as neurohormonal activation or to extra-cardiac comorbidities (e.g., diabetes or chronic kidney disease).

Cardiac fibroblasts do not constitute a homogenous population, and diverse subsets with specific functions have been identified in different conditions. For instance, single-cell transcriptomic analyses in mice after myocardial infarction (MI) led to the identification of clusters of pro- or anti-fibrotic myofibroblasts³⁵. In conditions of pressure overload, a subset of activated fibroblasts may preserve an adequate collagen scaffold and suppress macrophage-related inflammation³⁶.

Myocardial fibrosis is the result of collagen synthesis exceeding degradation, leading to excessive formation and deposition of collagen fibres, with predominance of type I over type III collagen fibres³¹. There are 2 key steps in the process of collagen fibre formation and maturation (shown in Figure 2): first, the release of carboxy- and amino-terminal propeptides from procollagen to render collagen molecules able to form fibrils; second, the stabilization of collagen fibrils through cross-links (mostly enzymatically mediated by enzymes of the lysyl oxidase [LOX] family, including LOX and LOX-like2). The increased collagen cross-linking makes fibres stiffer and more resistant to degradation, contributing to the detrimental impact of myocardial fibrosis on cardiac function and prognosis³⁷⁻⁴¹. Moreover, increasing ECM stiffness may further activate cardiac fibroblasts perpetuating the pro-fibrotic response⁴². Of note, the proportion between collagen type I and III is also relevant, as they have different physico-chemical properties, with collagen type I fibres being thicker and stiffer³¹.

Collagen degradation is regulated by matrix metalloproteinases (MMPs) and their specific tissue inhibitors (TIMPs). MMP-1, a collagenase, is the first enzyme acting on collagen, which is then further degraded by gelatinases (e.g., MMP-2 and MMP-9). The pathophysiological interpretation of circulating MMPs is complex as they should be considered in the context of the balance between collagen synthesis and degradation. Moreover, excessive collagen degradation may be detrimental and lead to LV dilatation in some settings (e.g., after MI). On the other hand, some of the peptides derived from MMP-mediated collagen degradation, the matricryptins, may also contribute to increase myocardial fibrosis⁴³. Nevertheless, elevated circulating levels of several MMPs are associated with poor outcomes in HF patients (e.g., higher risk of mortality and HF hospitalization), especially in those with HFrEF⁴⁴. Similarly, increased serum TIMP-1, the inhibitor of MMP-1, potentially reflecting an impaired collagen degradation, is also associated with poor clinical outcomes in both HFrEF and HFpEF patients^{44,45}. It is important to remember that none of the fibrosis-related biomarkers is cardiac-specific, and that they may also reflect the overall profibrotic response associated with some conditions like HFpEF, or altered collagen metabolism related to other comorbidities.

Biomarkers related to collagen type I quantity and cross-linking have been identified. The carboxy-terminal propeptide of procollagen type I (PICP) is directly associated with the extent of collagen deposition in myocardial biopsies in HF of different aetiologies including hypertensive heart disease⁴⁶ and dilated cardiomyopathy⁴⁷. On the other hand, the ratio of the carboxy-terminal telopeptide collagen type I (CITP) to matrix metalloproteinase-1 (MMP-1) is inversely correlated with myocardial collagen cross-linking, given that the higher the degree of cross-linking the less CITP is released by MMP-1³⁸. Additionally, cardiac and serum LOXL2 are upregulated in the myocardium of HF patients, correlating with the degree of collagen cross-linking⁴¹.

High serum PICP is associated with a higher risk of hospitalization and mortality in patients with dilated cardiomyopathy⁴⁷ (Figure 2). Likewise, the CITP:MMP-1 ratio is inversely associated with the risk of HF hospitalization in patients with HFpEF or HFrEF of hypertensive origin³⁸ (Figure 2), and can identify patients at risk of HF⁵³ and HF patients with diastolic dysfunction⁵⁴ who will respond to mineralocorticoid receptor antagonists (MRA) treatment. The combination of PICP and CITP:MMP-1 ratio also offers incremental prognostic value for assessing the risk of HF hospitalization or cardiovascular death beyond that offered by established risk factors in HF patients of

hypertensive aetiology⁴⁰. Of interest, serum PICP decreased in response to treatment with drugs interfering with the RAS such as angiotensin II type 1 receptor blockers (i.e., losartan)⁴⁸ or MRAs^{49–51}, or with the loop diuretic torasemide⁵² in patients with HF of ischemic and hypertensive aetiologies or in patients at risk for HF. On the other hand, the amino-terminal pro-peptide of procollagen type III (PIIINP) is the only other marker correlated with collagen deposition measured on myocardial biopsies in HF patients with idiopathic or ischemic dilated cardiomyopathy⁵⁵, and it is also modified by treatment with MRAs, mainly in HFrEF patients⁵⁶.

Other ECM molecules such as osteopontin or thrombospondins are potential biomarkers of pro-fibrotic pathway activation in new-onset and chronic HF^{57,58}. Similarly, other factors related to fibroblast biology such as fibroblasts growth factor-23 (FGF-23) were associated with cardiac remodelling after MI⁵⁹. In addition, more sensitive methodologies for the analysis of plasma proteome have allowed to identify pro-fibrotic proteomic profiles in patients at risk of HF⁶⁰, as explained below.

Microvascular remodelling and endothelial dysfunction

The microvascular endothelium accounts for one third of all cardiac cells and is a direct target of all the major cardiovascular risk factors⁶¹. The epithelial layer not only serves as a barrier between the blood and myocardial tissue, but is also involved in the immune response and communicates with adjacent cells through the release of peptides, proteins, extracellular vesicles and microRNAs^{61,62}. Indeed, endothelial dysfunction has been proposed as one of the main pathophysiological pathways involved in the development and progression of HF, in particular in the setting of HFpEF, as it can induce cardiomyocyte hypertrophy and stiffness, trigger fibrosis and facilitate the infiltration of immune cells^{61,63}. Figure 3 depicts the most relevant biomarkers released by dysfunctional endothelial cells and their autocrine and paracrine effects. As mentioned above for fibrosis biomarkers, none of the biomarkers discussed in this section is specific of cardiac EC. Circulating levels of indicators of EC activation like adhesion molecules involved in leukocyte trafficking (e.g., E-selectin, ICAM-1 or VCAM-1) or von Willebrand factor are proposed as biomarkers of endothelial dysfunction in HF^{64,65}.

Besides damage to vascular ECs, microvascular remodelling is characterized by structural abnormalities including medial hypertrophy, intimal hyperplasia, interstitial fibrosis and disarray of vascular smooth muscle cells. These changes lead to impaired

coronary flow reserve⁶⁶, which can be associated with specific circulating proteomic profiles^{67,68}, and narrowing of resistance vessels and capillary rarefaction⁶⁹⁻⁷¹. Vascular remodelling may compromise local tissue oxygen supply, impair fluid homeostasis and alter LV wall compliance^{61,72}.

ECs produce nitric oxide (NO) through the endothelial isoform of the nitric oxide synthase (eNOS). NO is a key regulator of vascular homeostasis, activating soluble guanylyl cyclase to generate cyclic guanosine monophosphate (cGMP), which causes vascular relaxation and regulates further effects on cardiac cells and blood, such as modulation of cardiac contraction, oxygen consumption, substrate utilization, apoptosis, hypertrophy and platelet adhesion⁷³. The effects of this signalling pathway are opposed by increased ROS and inflammation-mediated prostanoids produced by the cyclooxygenase pathway, which promotes endothelium-dependent vasoconstriction by inducing the breakdown of NO or by acting directly on vascular smooth muscle cells. Reduced NO production and bioavailability lead to decreased cGMP, resulting in vascular smooth muscle contraction and increased cardiomyocyte stiffness^{73,74}. However, no reliable biomarkers of the cGMP pathway have emerged so far. Of interest, vericiguat, a direct soluble guanylate cyclase stimulator, increases cGMP, which leads to improvements in vascular and cardiac function⁷⁵.

The peptide endothelin-1 (ET-1) is released by the endothelium. ET-1 synthesis is activated in response to cardiovascular risk factors, such as hyperglycemia, hypercholesterolemia, hypertension, aging, as well as by biochemical (e.g. angiotensin II, and several cytokines) and mechanical stimuli.⁷⁶ It is the most potent endogenous vasoconstrictor and contributes to vascular tone by binding to membrane bound G-protein coupled receptors (ET_A/ET_B)^{77,78}. The utility of plasma ET-1 to predict adverse cardiovascular events has been studied in different conditions such as systemic or pulmonary hypertension and HF^{76,77,79}. Although most evidence has been obtained from patients with coronary artery disease and HFrEF, pro-ET-1 was associated with a higher risk for all-cause death in patients with chronic HF irrespectively of the LV ejection fraction⁸⁰. The ET-1 receptor inhibitor atrasentan reduced the risk of kidney failure in diabetic patients with chronic kidney disease⁸¹, while tezosentan did not improve symptoms or clinical outcomes in patients with acute HF⁸². The cardiac benefits of ET-1 inhibition then remain to be validated in HF.

Adrenomedullin (ADM) is another regulatory peptide hormone that is produced mainly by endothelial and vascular smooth muscle cells and diffuses freely between the interstitium and the circulation. ADM is involved in the regulation of vascular integrity and is an emerging HF biomarker. ADM is synthesized by almost all tissues, but mainly by the adrenal medulla, heart, lungs and kidneys in response to pressure and volume overload⁸³. The two most important functions of ADM are vasodilatation and reduced endothelial permeability in resistance and capacitance vessels⁸³. Whilst interstitial ADM is thought to cause vasodilatation by acting on vascular smooth muscle cells, intravascular ADM improves vascular integrity and decrease permeability through its effects on ECs⁸⁴. Reliable quantification of ADM is difficult due to its short half-life and its binding to carrier proteins. The mid-regional portion of the prohormone (MR-proADM) seems to be more stable, and MR-proADM is useful to identify acute HF in conditions of severe dyspnoea and cardiogenic shock and to predict mortality⁸⁵⁻⁸⁷. More recently, an immunoassay that specifically measures biologically active ADM (bio-ADM) has been developed. Bio-ADM increases in acute HF patients, is associated with tissue congestion (not necessarily of cardiac origin) and increased risk of cardiovascular events^{83,88}. First data suggest that bio-ADM is a biotarget of sacubitril/valsartan⁸⁹. Clinical studies with anti-ADM antibodies are being planned⁹⁰.

Immune cells and inflammation

Macrophages are the most represented immune cell in the healthy heart, particularly in the interstitial space, while very few monocytes, dendritic cells or T-cells are present. Cardiac remodelling is characterized by an influx of immune cells that secrete a wide array of pro- and anti-inflammatory cytokines⁹¹. Possible phenotypes, their dynamics and the components of the immune response in cardiac remodelling and HF are extremely heterogeneous^{92,93}. They reflect the nature of the initial trigger (e.g., MI, myocarditis, or other injury), the severity and duration of the injury, the genetic susceptibility, and the presence or absence of additional triggers and modifiers of the immune response (e.g., obesity and diabetes)⁹⁴. The immune response after MI has been best characterized^{92,95}. In this setting, immune cells including neutrophils and monocytes act as chemoattractant and adhesive cells, mobilize more cells and build up a response whereby inflammation transitions to scar formation. The post-MI response has a clear temporal pattern, with an acute response during the first days and a subsequent reparative response during the following 2-4 weeks, after which a chronic response

develops and most immune cells disappear. Therefore, the profile of inflammation-related biomarkers will change dynamically along time depending on the specific underlying injury.

Specific proteins are produced and secreted as part of the immune response and may be measured as biomarkers. The list of 'inflammatory biomarkers' is very long, but we will focus on cytokines and a few biomarkers that, although not being cardiac-specific, have been described in greater detail in the setting of cardiac remodelling and HF⁹⁶. Figure 3 summarizes the most relevant biomarkers released by infiltrated and resident cardiac leukocytes and their paracrine actions.

Classical pro-inflammatory cytokines, including tumour necrosis factor- α (TNF- α) and IL-1 and IL-6, have been studied mainly in clinical cohorts of HFrEF being associated with less favourable outcomes⁹⁷. These associations are not very strong and are confounded by multiple factors such as age and comorbidities. TNF- α has been proposed as a possible treatment target, but a trial with the TNF- α receptor blocker etanercept did not improve the clinical status nor prolong survival in patients with HFrEF⁹⁸.

Pro-inflammatory cytokines also trigger the release of other factors such as insulin-like growth factor binding protein-7 (IGFBP-7). Elevated serum IGFBP-7 are associated with left atrial remodelling and diastolic dysfunction in patients with acute dyspnoea (with or without HF)⁹⁹ and in HFpEF patients¹⁰⁰, as well as with a higher risk of cardiovascular events including mortality¹⁰⁰.

The pro-inflammatory alarmins S100A8 and S100A9 play a role in cardiac remodelling after MI¹⁰¹. Elevated plasma S100A8/S100A9 is associated with a higher risk of MI and cardiovascular death in healthy individuals¹⁰² and with a higher risk of mortality in elderly HF patients¹⁰³.

Galectin-3 is secreted by macrophages into sites of injury¹⁰⁴, and circulating levels of galectin-3 are increased in patients with either HFrEF or HFpEF¹⁰⁵ and are associated with poor outcomes in acute¹⁰⁶ and chronic HF¹⁰⁷. Interestingly, targeting galectin-3 may attenuate myocardial fibrosis¹⁰⁸. Several compounds inhibiting galectin-3 are under evaluation in phase 2 and 3 clinical trials on several fibrotic diseases, such as pulmonary (NCT03832946) and liver (NCT02462967) fibrosis.

sST2 is another biomarker associated with tissue fibrosis, that is increased in both HFrEF and HFpEF patients¹⁰⁵ and associated with worse outcomes in acute and chronic HF^{109,110}. Although sST2 was initially thought to be primarily produced by cardiomyocytes, more recent evidence suggests that it is produced mainly in the lungs and by the vascular endothelium in response to pro-fibrotic and pro-inflammatory stimuli, but also following vascular congestion¹¹⁰. sST2 levels change in response to guideline-recommended medical therapy^{111,112}. For instance, treatment with the angiotensin receptor-neprilysin inhibitor (ARNI) sacubitril/valsartan induced a reduction in sST2 levels in HFrEF patients from the PARADIGM-HF trial¹¹³, whereas a substudy of the effects of eplerenone on left ventricular remodelling following heart attack trial (EPHESUS) showed no significant effect of eplerenone on sST2¹¹⁴. However, those patients with higher sST2 treated with eplerenone showed less adverse cardiac remodelling than those treated with placebo¹¹⁵. In this context, sST2 may be used to guide treatment^{111,112}. Prospective trials are required to assess whether sST2-guided management will improve outcomes; the potential clinical relevance of sST2 will be discussed in detail in the second part of this review.

Biomarkers involved in communication between cardiac cells

Autocrine and paracrine communication between cardiac cells and immune cells plays a key role in cardiac remodelling. This communication is mediated by growth factors, cytokines and non-coding RNAs among others, and these molecules may act as both pathophysiological mediators and circulating biomarkers. A comprehensive description of all potential candidates is beyond the scope of this review, so we will focus on non-coding RNAs and extracellular vesicles, discussing some representative examples.

Non coding RNAs

Non-coding RNAs reflect the large majority of the human RNA and some are key regulators of multiple cellular and tissue remodelling processes^{115,116}. However, non-coding RNAs usually have multiple targets and in some cases it is not easy to associate them with specific features of cardiac remodelling. Several microRNAs are involved in cardiac remodelling, hypertrophy and HF with diverse and sometimes opposite effects, either inhibiting or activating cardiomyocyte hypertrophy, cell death, neovascularization and fibrosis. For instance, miR-15, miR-34 and members of the miR-17-92 cluster induce cardiomyocyte apoptosis and stimulate neovascularization¹¹⁷⁻¹¹⁹. On the contrary,

miR-210 has anti-apoptotic effects and protects the vasculature¹²⁰. miR-208, a cardiac-specific microRNA, promotes hypertrophy¹²¹. However, miR-133, a muscle-enriched microRNA, inhibits this process¹²². Several microRNAs, such as miR-21, induce fibroblast activation and myocardial fibrosis¹²³. miR-132 is actively involved in pathological cardiac remodelling, promoting cardiomyocyte hypertrophy and inhibiting autophagy¹²⁴. A miR-132 inhibitor has shown promising results in several preclinical large animal HF models^{125,126}. Recently, the first study applying a miRNA inhibitor targeting miR-132 in chronic HF patients showed a good safety profile and indicative efficacy paving the way for continued development in larger study cohorts¹²⁷.

Long non-coding RNAs (lncRNAs) comprise a large group of extremely diverse molecules which are defined by a length of more than 200 nucleotides, and regulate gene expression and miRNA function. They play an important role in cardiac remodelling. The lncRNAs “cardiac hypertrophy associated transcript” (CHAST)¹²⁸ and H19¹²⁹ promote hypertrophy and emerged as powerful treatment targets, whereas repression of “myosin heavy chain-associated RNA transcript” (MYHEART) accelerates the progression from hypertrophy to HF¹³⁰. In addition, both the cardiac fibroblast-enriched “Wisp2 super-enhancer-associated RNA” (WISPER), as well as the “maternally expressed gene 3” (MEG3) promote cardiac fibroblast activation and myocardial fibrosis^{131,132}.

Non-coding RNAs can cross the membrane barrier and can be detected in different body fluids such as urine, serum and plasma. In contrast to coding messenger RNA, they are relatively resistant to nucleolytic degradation by RNases and some plasma non-coding RNAs are quite stable in challenging conditions (e.g., varying temperature and pH), making them appealing candidates as circulating biomarkers¹³³. Their stability derives from their transportation within EVs or association with RNA-binding proteins such as nucleophosmin, argonaute protein 2 or lipoprotein complexes¹³⁴.

Some muscle-specific or cardiac-enriched microRNAs, such as miR-1, miR-133, miR-208 or miR-409, are consistently increased in the circulation following cardiac damage¹³³. Circulating miR-133 and miR-208 increase shortly after MI. miR-133 increased up to 100 times within the first 9 hours after MI¹³⁵, and correlated with cTnT levels¹³⁶. Similarly, an increase in circulating miR-208 was detected during the first hours after an MI, similarly to cTnT, but showing a more rapid increase¹³⁷. When

compared with other cardiac- and muscle-associated miRNAs, miR-208 displayed the highest specificity and sensitivity for MI prediction¹³⁷. Nevertheless, other studies failed to detect miR-208 in the circulation¹³⁵, probably due to low levels and quick clearance, which limits its usefulness as a biomarker in a chronic setting. miR-499 is another cardiac specific microRNA, encoded by an intron of the β -myosin heavy chain gene that is down-regulated by hypoxia/ischaemia. Circulating miR-499 is elevated already 1 hour after symptom-onset in MI and increases gradually for 9 hours, being associated with cTnT levels¹³⁸. Interestingly, miR-208 and miR-133 have prognostic utility, being associated with mortality in HF patients¹³⁹. Alterations in circulating levels of several non-cardiac microRNAs have been reviewed elsewhere^{133,140}. Notably, an 8-microRNA signature, reflecting changes in different pathological pathways, has shown an adequate performance (AUC 0.81) to discriminate HF_rEF from HF_pEF¹⁴¹. The cardiac tissue-associated miR-132 is also positively correlated with NYHA class and improved risk prediction for HF hospitalization in patients with chronic HF¹⁴².

The clinical relevance of circulating lncRNAs as biomarkers has been less studied. In transcriptomic studies of lncRNAs in plasma from patients with cardiac remodelling post-MI, the lncRNA “long-intergenic non coding RNA predicting cardiac remodelling” (LIPCAR) was identified as a potential biomarker predicting outcome post-MI and in hypertensive HF patients^{143,144}. Other lncRNAs (aHIF, ANRIL, KCNQ1OT1, MIAT, MALAT) have shown some value to predict cardiac remodelling post MI, while ANRIL and KCNQ1OT1 enhanced the predictive value of a model including clinical parameters and cardiac biomarkers¹⁴⁵.

Some drawbacks of circulating microRNAs are the lack of cardiac specificity and variability in the proposed measurement protocols (e.g., serum vs. plasma, freezing conditions, fasting, different processing protocols)¹¹⁵. RNA yield varies significantly between different isolation procedures¹⁴⁶ and a low correlation has been found between the different methods used for non-coding RNA quantification (PCR, microarrays, sequencing)¹⁴⁷. Moreover, normalization strategies are not yet standardized, and both endogenous and exogenous reference standards are used¹⁴⁸, complicating the comparison between studies. Addressing these issues is essential to facilitate the translation of non-coding RNA measurements to clinical practice¹³³. In addition, further studies in randomized clinical trials are needed to elucidate their fluctuation in response to available therapeutic agents in HF.

Extracellular vesicles

Extracellular vesicles are produced by different cardiac cells and contain a variety of receptors, lipids, proteins and RNA (both mRNA and non-coding RNAs). Extracellular vesicles have emerged as potential mediators in cardiovascular disease, playing a prominent role in intercellular communication^{149–151}. For instance, cardiomyocyte-derived exosomes enriched in miR-92a trigger myofibroblast activation¹⁵², and cardiac fibroblast-derived extracellular vesicles enriched in miR21, miR-27a, miR-28-3p and miR-34a are absorbed by cardiomyocytes, leading to ROS accumulation, cardiomyocyte damage and HF development^{153,154}. Under hypoxic or ischaemic conditions, cardiomyocyte-derived extracellular vesicles promote EC proliferation and vessel sprouting, with miR-122 and miR-143 being involved in these effects¹⁵⁵. In addition to miRs, extracellular vesicles contain large amounts of lncRNAs that contribute to paracrine signalling between cardiac cell types^{151,156}. Extracellular vesicles from immune cells are also involved in cardiac remodelling¹⁵⁷. For instance, inflammatory extracellular vesicles released after MI contain abundant alarmins (e.g., IL-1 α , IL-1 β , Rantes) that contribute to cardiac dysfunction¹⁵⁸.

Extracellular vesicles could represent new diagnostic and prognostic biomarkers as their molecular content is a fingerprint of the cell of origin and its physiological state and they are detected in easily accessible body fluids such as blood and urine¹⁵¹. Interestingly, the molecular content of extracellular vesicles, but also the number of total extracellular vesicles or vesicles from a specific cell type are altered in pathological conditions and could be used as a circulating biomarker of cellular alterations¹⁵⁹. Both cardiac fibroblasts and cardiomyocytes actively secrete extracellular vesicles containing large amount of noncoding RNAs and those vesicles can be uptaken by other cardiovascular cell types thus having powerful paracrine activities opening up a new avenue of mechanistic and potentially therapeutic opportunities^{151,154,156}. However, analysis of extracellular vesicles content requires several processing steps and low-input techniques that currently limit their applicability in clinical practice.

Novel molecular insights from “-omic” studies

HF phenotyping combining high throughput methodologies such as transcriptomics, proteomics and metabolomics might be a new frontier in the research on cardiac remodelling and HF, representing an important step towards personalized medicine¹⁶⁰.

Bioinformatics and artificial intelligence platforms are essential to manage the enormous amount of data from these studies, to identify known or previously unrecognized molecular mechanisms relevant for myocardial remodelling and HF¹⁶¹. Network analyses of circulating biomarkers have been useful to identify differential phenotypes between HFpEF and HFrEF patients¹⁶², providing mechanistic insights into cardiac remodelling^{67,163} and the actions of spironolactone in patients at risk of HF¹⁶⁴.

Single cell transcriptomics and epigenomics

Technological advances with Next Generation Sequencing and high-throughput profiling have given insights into the molecular substrates of cardiac remodelling in HF. These include numerous single-cell transcriptomic and epigenomic studies that advance knowledge of diverse myocardial cell types subsets, and pathologically significant changes, tracking through disease progression¹⁶⁵⁻¹⁶⁷, confirming known, and revealing novel, pathways of the response to cardiac stress. Some findings point to new candidate biomarkers for different disease stages. For example, a single-cell transcriptomic analysis of hearts from mice subjected to angiotensin II administration to drive pathological remodelling revealed that 2 distinct fibroblast populations emerge upon stress¹⁶⁸. Called Fibroblast-*Cilp* and Fibroblast-*Thbs4*, these reflect markers that were highly expressed in each cell subpopulation, but both were otherwise barely present in unstressed hearts, and only significantly increased upon angiotensin II provocation. The clinical significance of these specific subpopulations of fibroblasts will need further investigation considering the preeminent role of cardiac fibrosis in cardiac remodelling of different aetiologies. In another study, spatial transcriptomics identified 2 temporal stages in myocardial scar formation: an early scar with high hypoxia signalling and low ECM production, and a more mature scar with increased ECM production¹⁶⁹. Genes including *TGFB3* and *PDGFRA* are abundantly expressed in the mature scar, while *SERPINE1* is more expressed in the early scar. The study also proposed *RUNX1* as a driver of differentiation from fibroblasts to myofibroblasts, a key process in post-MI remodelling.

Epigenetic modifications such as DNA methylation and histone modifications have also emerged as possible biomarkers in HF. Differentially methylated promoters and CpG islands represent hallmarks of failing hearts^{170,171}. Genomic enhancers marked by specific histone modifications also show characteristic patterns of change when assessed in biopsies from failing LVs^{172,173}. Differentially methylated loci, including

demethylated *NPPA* and *NPPB*, were found in circulating blood cells from patients with dilated cardiomyopathy, making them potential biomarkers for further study¹⁷⁰. Similarly, a growing body of evidence supports the utility of somatic mutations found in clonally expanded haematopoietic cells (clonal haematopoiesis of indeterminate potential: CHIP) for outcome prediction in HF^{174,175}.

Proteomics and metabolomics

There is a mismatch between the transcriptome and proteome due to multiple mechanisms that are dysregulated in disease conditions such as altered regulation of protein translation by non-coding RNAs or of protein degradation pathways. Therefore, proteomics is a key complement to genomic and transcriptomic studies. Proteomic analysis implies an unbiased interrogation of multiple proteins at a genome-wide scale, but no single proteomic platform can accomplish this alone. For example, the human plasma proteome project had to combine unbiased and targeted mass spectrometric approaches, standard immunoassays and newer multiplexed affinity-capture techniques to cover the breadth and depth of the human plasma proteome (<https://www.hupo.org/plasma-proteome-project>). Mass spectrometry has made major advances in unbiased proteomic profiling, particularly through the application of label-free high-resolution techniques¹⁷⁶. However, unbiased mass spectrometry techniques are still unable to reliably detect proteins with a very low expression, especially in complex matrices like plasma or serum where protein concentration spans across several orders of magnitude. Developments in proteomics allow sensitive and specific detection of low abundance proteins in plasma. Available approaches include mass spectrometry, protein microarray, aptamer, and proximity extension assay (PEA)-based technology¹⁷⁷. For instance, plasma proteomic analyses with PEA panels identified proteins related to inflammation, ECM remodelling, angiogenesis, regulation of blood pressure and RAS activation and metabolism that were associated with incident HF⁶⁰. Chan et al.¹⁶³ employed aptamer-based affinity-capture plasma proteomics to measure 1,305 plasma proteins one month after MI. They found that 212 differentially-expressed plasma proteins were significantly associated with subsequent HF events. Of these, 96 proteins correlated with LVEF measured 4 months after an MI. When these 96 proteins were cross-referenced with RNAseq data from human and murine datasets of ischaemic HF performed with single-cell resolution, the most highly-enriched mRNA-protein

candidates were cardiac-specific biomarkers NT-proBNP and cTnT, as well as emergent biomarkers such as angiopoietin-2, thrombospondin-2, latent transforming growth factor- β binding protein-4 and follistatin-related protein-3, which are primarily of ECM origin. Both angiopoietin-2 and thrombospondin-2 were also found to be the circulating proteins most strongly associated with HF events in a large electronic health record-driven proteomic study¹⁷⁸.

Comprehensive plasma metabolomic profiling shows systemic alterations in patients with cardiac hypertrophy and HF¹⁷⁹. In patients from the Bogalusa Heart Study, untargeted metabolomic analysis identified pseudouridine and N-formylmethionine to be associated with cardiac hypertrophy¹⁸⁰. Although promising, there are some technical and methodological challenges to the use of metabolomics for biomarker profiling. Efforts are focused on minimizing analytical and biological variability (e.g., fasting status or duration of fasting, diet, timing of sampling, drug treatments, etc.), harmonizing metabolite data across different analytic platforms, metabolite annotation and relative quantification¹⁸¹.

Conclusion and future perspectives

Cardiac remodelling is a dynamic process that plays a major role in HF development and progression and is characterized by a complex network of intertwined tissue, cellular and molecular alterations. An accurate assessment of these changes could be valuable for personalized risk stratification and management of HF patients. Since cardiac tissue is not usually available for study, surrogate biomarkers of tissue alterations are needed (Table 1). A large number of potential circulating biomarkers has been proposed over the last 20 years, leading to some scepticism about their clinical applicability. For several of the candidates presented, robust and reproducible assessment techniques, association with cardiac features, variations in response to disease progression or specific therapies, and validation in large-scale studies are all essential steps towards their routine clinical application. Moreover, as cardiac remodelling involves different cell types and molecules, no single biomarker is likely to provide complete information, and a multi-marker panel including biomarkers that reflect alterations in different cells and pathological pathways, and possibly also of different nature (e.g., proteins, non-coding RNAs, metabolites, epigenetic modifications) might better capture the histological and molecular signature of cardiac remodelling (Graphical abstract). The challenge remains to integrate several biomarkers and their

dynamic changes associated to disease evolution or therapeutic management and capture the complexity of tissue cardiac remodelling. Algorithms obtained through machine learning strategies could help define the value of clusters of biomarkers associated with adverse or reverse cardiac remodelling. This approach is already used to identify phenotypic clusters of HF patients¹⁸². To this aim, multinational collaborative efforts are needed to provide large independent cohorts with the simultaneous assessment of the panel of biomarkers and develop and validate algorithms to support clinical decision-making.

Finally, the combination of circulating biomarkers with imaging findings reflecting alterations in cardiac geometry and function, as well as genetic profiles, could allow a better phenotyping of cardiac remodelling, potentially enabling a tailored approach to HF therapy.

Funding:

This work was supported by grants from the Spanish Ministry of Science, Innovation and Universities Institute of Health Carlos III (ISCIII) (PI18/01469 and PI21/00946 to A.G.; CB16/11/00403 to A.B.-G and CB16/11/00483 to J.D. projects co-funded by the European Regional Development Funds); the European Commission (H2020 CRUCIAL project 2019–848109-2 to A.G.); the European Research Council (ERC CoG 818715 to R.A.d.B.; ERC-PoC Megfib to T.T.); the National Medical Research Council of Singapore (NMRC; NMRC/STaR/0022/2014 to A.M.R. and MOH-000280 to M.Y.C.); the Health Research Council of New Zealand (02/152, 08/070, 11/1070), National Heart Foundation of New Zealand, New Zealand Lotteries Grant Board, Foundation for Research, Science and Technology and the Christchurch Heart Institute Trust to A.M.R.; the Netherlands Heart Foundation (2017-21; 2017-11; 2018-30; 2020B005) to R.A.d.B.; the leDucq Foundation (Cure-PLaN) to R.A.d.B.; the Deutsche Forschungsgemeinschaft (KFO311 and TRR267 to T.T.; TTR 219 to M.B.; and TRR 1470 to S.V.L.); the Karolinska Institutet, the Swedish Research Council (523–2014-2336), the Swedish Heart Lung Foundation (20150557, 20190310), and the Stockholm County Council (20170112, 20190525) to L.H.L.

Disclosures:

A.M.R. reports research funding from Roche Diagnostics, Novo Nordisk and Bayer Healthcare (outside the submitted work). The UMCG, which employs RAdB has

received research grants and/or fees from AstraZeneca, Abbott, Boehringer Ingelheim, Cardior Pharmaceuticals GmbH, Ionis Pharmaceuticals, Inc., Novo Nordisk, and Roche (outside the submitted work). RADB received speaker fees from Abbott, AstraZeneca, Bayer, Novartis, and Roche (outside the submitted work). TT filed and licensed patents in the field of noncoding RNAs. TT is founder and shareholder of Cardior Pharmaceuticals GmbH. He received speaker or other fees from Sanofi, Novo Nordisk, Boehringer Ingelheim, Takeda, Amicus Therapeutics, KSILINK (outside the submitted work). M.H. received consultant and speaker fee from Roche Diagnostics, Boehringer, Astra-Zeneca, Bayer, Biopeutics, Novartis, Vifor, Pfizer, Baxter, Takeda and Sanofi (outside the submitted work). M.Y.C. reports research funding from Astra-Zeneca, Roche Diagnostics, Bayer Healthcare, Boston Scientific and Abbott Technologies (outside the submitted work). S.D.A. reports receiving fees from Abbott, Actimed, Bayer, Boehringer Ingelheim, Cardiac Dimension, Cordio, Impulse Dynamics, Novartis, Occlutech, Servier and Vifor Pharma, and grant support from Abbott and Vifor Pharma (outside the submitted work). M.B. reports personal fees from Abbott, Amgen, AstraZeneca, Bayer, Boehringer Ingelheim, Cytokinetics, Medtronic, Novartis, Servier and Vifor (outside the submitted work). V.D. received speaker fees from Abbott Vascular, Edwards Lifesciences, GE Healthcare, Medtronic, MSD and Novartis (outside the submitted work). P.S.J.'s institution has been paid by Novartis, AstraZeneca, NovoNordisk, and Bayer for work on clinical trials. He has received consulting, advisory board, and speakers fees from Novartis, AstraZeneca, and Boehringer Ingelheim, and grants from Boehringer Ingelheim and Analog Devices Inc (outside the submitted work). L.H.L. received grants from AstraZeneca, Vifor, Boston Scientific, Boehringer Ingelheim, Novartis; consulting fees from Merck, Vifor, AstraZeneca, Bayer, Pharmacosmos, MedScape, Sanofi, Lexicon, Myokardia, Boehringer Ingelheim, Servier; speakers honoraria from Abbott, MedScape, Radcliffe, AstraZeneca, Novartis; and he is shareholder in AnaCardio (outside the submitted work). B.M. reports advisory or speaker fees from AstraZeneca, Bayer, Boehringer Ingelheim, Ely Lilly, Servier, Novartis, Vifor Pharma (outside the submitted work). C.M. received research support from the Swiss National Science Foundation, the Swiss Heart Foundation, the University of Basel, the University Hospital Basel, the KTI, Abbott, Beckman Coulter, BRAHMS, Idorsia, Ortho Diagnostics, Novartis, Roche, Siemens and Singulex, as well as speaker/consulting honoraria from Amgen, Astra Zeneca, Bayer, BMS, Boehringer Ingelheim, Daiichi Sankyo, Idorsia, Novartis, Osler, Roche and Sanofi (outside the

submitted work). J.N. reports personal fees from AstraZeneca, Novartis, Boehringer-Ingelheim, Eli Lilly, Rovi, NovoNordisk, and Vifor Pharma (outside the submitted work). M.F.P. received consultancy fees from AstraZeneca, CHF Solution, Novartis, and Servier (outside the submitted work). A.D.R. reports research funding from Novartis, Pfizer, GossamerBio, Jansens, and Arena/United Therapeutics as well as speaker fees/consultancies from Actavis, Astra-Zeneca, Berlin Chemie-Menarini, Boehringer Ingelheim, Hemofarm, MSD, Novartis, Pfizer, Sandoz, Servier, and Takeda (outside the submitted work). P.R. reports consulting for Idorsia, G3P, honoraria from AstraZeneca, Bayer, CinCor, CVRx, Fresenius, Grunenthal, Novartis, NovoNordisk, Relypsa, Roche, Servier, Stealth Peptides, and Vifor Fresenius Medical Care Renal Pharma; and travel grants from AstraZeneca, Bayer, CVRx, Novartis, and Vifor Fresenius Medical Care Renal Pharma (outside the submitted work); Cofounder: CardioRenal. G.S. reports grants and personal fees from Vifor, Società Prodotti Antibiotici, AstraZeneca, Roche, Servier, Novartis, GENESIS, Cytokinetics, Medtronic, Boston Scientific, PHARMACOSMOS, Merck, Bayer, Boehringer Ingelheim (outside the submitted work). C.G.T. has received funding from Amgen and personal fees from Vivalyfe (outside of the submitted work), and is listed as an inventor on two heart failure patents. All other authors have nothing to disclose.

REFERENCES

1. Burchfield JS, Xie M, Hill JA. Pathological ventricular remodeling: mechanisms: part 1 of 2. *Circulation*. 2013;128(4):388-400. doi:10.1161/CIRCULATIONAHA.113.001878
2. Saraon T, Katz SD. Reverse Remodeling in Systolic Heart Failure. *Cardiology in Review*. 2015;23(4):173-181. doi:10.1097/CRD.0000000000000068
3. Hall JL, Fermin DR, Birks EJ, et al. Clinical, molecular, and genomic changes in response to a left ventricular assist device. *Journal of the American College of Cardiology*. 2011;57(6):641-652. doi:10.1016/j.jacc.2010.11.010
4. Atkinson AJ, Colburn WA, DeGruttola VG, et al. Biomarkers and surrogate endpoints: preferred definitions and conceptual framework. *Clinical pharmacology and therapeutics*. 2001;69(3):89-95. doi:10.1067/MCP.2001.113989
5. Trindade F, Vitorino R, Leite-Moreira A, Falcão-Pires I. Pericardial fluid: an underrated molecular library of heart conditions and a potential vehicle for cardiac therapy. *Basic Research in Cardiology*. 2019;114(2). doi:10.1007/s00395-019-0716-3
6. Meijers WC, Bayes-Genis A, Mebazaa A, et al. Circulating Heart Failure Biomarkers beyond Natriuretic Peptides: updated review from the Biomarker Study Group of the Heart Failure Association (HFA), European Society of Cardiology (ESC). *European Journal of Heart Failure*. Published online September 8, 2021:ejhf.2346. doi:10.1002/ejhf.2346
7. Ibrahim NE, Januzzi JL. Established and emerging roles of biomarkers in heart failure. *Circulation Research*. 2018;123(5):614-629. doi:10.1161/CIRCRESAHA.118.312706
8. Piek A, Du W, de Boer RA, Silljé HHW. Novel heart failure biomarkers: why do we fail to exploit their potential? *Critical Reviews in Clinical Laboratory Sciences*. 2018;55(4):246-263. doi:10.1080/10408363.2018.1460576
9. Du W, Piek A, Marloes Schouten E, et al. Plasma levels of heart failure biomarkers are primarily a reflection of extracardiac production. *Theranostics*. 2018;8(15):4155-4169. doi:10.7150/thno.26055
10. Bertero E, Maack C. Metabolic remodelling in heart failure. *Nature Reviews Cardiology*. 2018;15(8):457-470. doi:10.1038/s41569-018-0044-6
11. Mouton AJ, Hall JE. Novel roles of immunometabolism and nonmyocyte metabolism in cardiac remodeling and injury. *American Journal of Physiology - Regulatory Integrative and Comparative Physiology*. 2020;319(4):R476-R484. doi:10.1152/ajpregu.00188.2020
12. Wagner JUG, Dimmeler S. Cellular cross-talks in the diseased and aging heart. *Journal of Molecular and Cellular Cardiology*. 2020;138:136-146. doi:10.1016/j.yjmcc.2019.11.152

13. Goetze JP, Bruneau BG, Ramos HR, Ogawa T, de Bold MK, de Bold AJ. Cardiac natriuretic peptides. *Nature Reviews Cardiology*. 2020;17(11):698-717. doi:10.1038/s41569-020-0381-0
14. Murphy SP, Prescott MF, Maisel AS, et al. Association Between Angiotensin Receptor-Nepilysin Inhibition, Cardiovascular Biomarkers, and Cardiac Remodeling in Heart Failure With Reduced Ejection Fraction. *Circulation Heart failure*. 2021;14(6):653-662. doi:10.1161/CIRCHEARTFAILURE.120.008410
15. Januzzi JL, Prescott MF, Butler J, et al. Association of Change in N-Terminal Pro-B-Type Natriuretic Peptide Following Initiation of Sacubitril-Valsartan Treatment With Cardiac Structure and Function in Patients With Heart Failure With Reduced Ejection Fraction. *JAMA*. 2019;322(11):1085-1095. doi:10.1001/JAMA.2019.12821
16. Daubert MA, Adams K, Yow E, et al. NT-proBNP Goal Achievement Is Associated With Significant Reverse Remodeling and Improved Clinical Outcomes in HFrEF. *JACC Heart failure*. 2019;7(2):158-168. doi:10.1016/J.JCHF.2018.10.014
17. McDonagh TA, Metra M, Adamo M, et al. 2021 ESC Guidelines for the diagnosis and treatment of acute and chronic heart failure. *European Heart Journal*. Published online August 27, 2021. doi:10.1093/eurheartj/ehab368
18. Kociol RD, Pang PS, Gheorghiade M, Fonarow GC, O'Connor CM, Felker GM. Troponin elevation in heart failure prevalence, mechanisms, and clinical implications. *Journal of the American College of Cardiology*. 2010;56(14):1071-1078. doi:10.1016/J.JACC.2010.06.016
19. Saunders JT, Nambi V, De Lemos JA, et al. Cardiac troponin T measured by a highly sensitive assay predicts coronary heart disease, heart failure, and mortality in the atherosclerosis risk in communities study. *Circulation*. 2011;123(13):1367-1376. doi:10.1161/CIRCULATIONAHA.110.005264
20. De Lemos JA, Drazner MH, Omland T, et al. Association of troponin T detected with a highly sensitive assay and cardiac structure and mortality risk in the general population. *JAMA - Journal of the American Medical Association*. 2010;304(22):2503-2512. doi:10.1001/jama.2010.1768
21. Gohar A, Chong JPC, Liew OW, et al. The prognostic value of highly sensitive cardiac troponin assays for adverse events in men and women with stable heart failure and a preserved vs. reduced ejection fraction. *European journal of heart failure*. 2017;19(12):1638-1647. doi:10.1002/EJHF.911
22. Neeland IJ, Drazner MH, Berry JD, et al. Biomarkers of chronic cardiac injury and hemodynamic stress identify a malignant phenotype of left ventricular hypertrophy in the general population. *Journal of the American College of Cardiology*. 2013;61(2):187-195. doi:10.1016/j.jacc.2012.10.012

23. Barry SP, Davidson SM, Townsend PA. Molecular regulation of cardiac hypertrophy. *International Journal of Biochemistry and Cell Biology*. 2008;40(10):2023-2039. doi:10.1016/j.biocel.2008.02.020
24. Weinberg EO, Shimpo M, De Keulenaer GW, et al. Expression and regulation of ST2, an interleukin-1 receptor family member, in cardiomyocytes and myocardial infarction. *Circulation*. 2002;106(23):2961-2966. doi:10.1161/01.CIR.0000038705.69871.D9
25. Wesseling M, de Poel JHC, de Jager SCA, M W, JHC de P, SCA de J. *Growth Differentiation Factor 15 in Adverse Cardiac Remodelling: From Biomarker to Causal Player*. Vol 7. ESC Heart Fail; 2020:1488-1501. doi:10.1002/ehf2.12728
26. Kempf T, Eden M, Strelau J, et al. The transforming growth factor- β superfamily member growth-differentiation factor-15 protects the heart from ischemia/reperfusion injury. *Circulation Research*. 2006;98(3):351-360. doi:10.1161/01.RES.0000202805.73038.48
27. Wollert KC, Kempf T, Wallentin L. Growth Differentiation Factor 15 as a Biomarker in Cardiovascular Disease. *Clinical chemistry*. 2017;63(1):140-151. doi:10.1373/CLINCHEM.2016.255174
28. Chan MMY, Santhanakrishnan R, Chong JPC, et al. Growth differentiation factor 15 in heart failure with preserved vs. reduced ejection fraction. *European Journal of Heart Failure*. 2016;18(1):81-88. doi:10.1002/ejhf.431
29. Hagström E, James SK, Bertilsson M, et al. Growth differentiation factor-15 level predicts major bleeding and cardiovascular events in patients with acute coronary syndromes: results from the PLATO study. *European heart journal*. 2016;37(16):1325-1333. doi:10.1093/EURHEARTJ/EHV491
30. Ahmad T, Wang T, O'Brien EC, et al. Effects of left ventricular assist device support on biomarkers of cardiovascular stress, fibrosis, fluid homeostasis, inflammation, and renal injury. *JACC Heart failure*. 2015;3(1):30-39. doi:10.1016/J.JCHF.2014.06.013
31. López B, Ravassa S, Moreno MU, et al. Diffuse myocardial fibrosis: mechanisms, diagnosis and therapeutic approaches. *Nature Reviews Cardiology*. Published online 2021. doi:10.1038/s41569-020-00504-1
32. Wagner JUG, Dimmeler S. Cellular cross-talks in the diseased and aging heart. *Journal of molecular and cellular cardiology*. 2020;138:136-146. doi:10.1016/J.YJMCC.2019.11.152
33. van Linthout S, Miteva K, Tschöpe C. Crosstalk between fibroblasts and inflammatory cells. *Cardiovascular research*. 2014;102(2):258-269. doi:10.1093/CVR/CVU062
34. Travers JG, Kamal FA, Robbins J, Yutzey KE, Blaxall BC. Cardiac fibrosis: The fibroblast awakens. *Circulation Research*. 2016;118(6):1021-1040. doi:10.1161/CIRCRESAHA.115.306565

35. Farbehi N, Patrick R, Dorison A, et al. Single-cell expression profiling reveals dynamic flux of cardiac stromal, vascular and immune cells in health and injury. *eLife*. 2019;8. doi:10.7554/eLife.43882
36. Russo I, Cavalera M, Huang S, et al. Protective Effects of Activated Myofibroblasts in the Pressure-Overloaded Myocardium Are Mediated Through Smad-Dependent Activation of a Matrix-Preserving Program. *Circulation research*. 2019;124(8):1214-1227. doi:10.1161/CIRCRESAHA.118.314438
37. Kasner M, Westermann D, Lopez B, et al. Diastolic tissue doppler indexes correlate with the degree of collagen expression and cross-linking in heart failure and normal ejection fraction. *Journal of the American College of Cardiology*. 2011;57(8):977-985. doi:10.1016/j.jacc.2010.10.024
38. López B, Ravassa S, González A, et al. Myocardial collagen cross-linking is associated with heart failure hospitalization in patients with hypertensive heart failure. *Journal of the American College of Cardiology*. 2016;67(3):251-260. doi:10.1016/j.jacc.2015.10.063
39. Zile MR, Baicu CF, Ikonomidis JS, et al. Myocardial stiffness in patients with heart failure and a preserved ejection fraction contributions of collagen and titin. *Circulation*. 2015;131(14):1247-1259. doi:10.1161/CIRCULATIONAHA.114.013215
40. Ravassaa S, López B, Querejeta R, et al. Phenotyping of myocardial fibrosis in hypertensive patients with heart failure. Influence on clinical outcome. *Journal of Hypertension*. 2017;35(4):853-861. doi:10.1097/HJH.0000000000001258
41. Yang J, Savvatis K, Kang JS, et al. Targeting LOXL2 for cardiac interstitial fibrosis and heart failure treatment. *Nature Communications*. 2016;7. doi:10.1038/ncomms13710
42. Herum K, Lunde I, McCulloch A, Christensen G. The Soft- and Hard-Heartedness of Cardiac Fibroblasts: Mechanotransduction Signaling Pathways in Fibrosis of the Heart. *Journal of Clinical Medicine*. 2017;6(5):53. doi:10.3390/jcm6050053
43. de Castro Brás LE, Frangogiannis NG. Extracellular matrix-derived peptides in tissue remodeling and fibrosis. *Matrix biology : journal of the International Society for Matrix Biology*. 2020;91-92:176-187. doi:10.1016/J.MATBIO.2020.04.006
44. Ferreira JM, Ferreira SM, Ferreira MJ, Falcão-Pires I. Circulating Biomarkers of Collagen Metabolism and Prognosis of Heart Failure with Reduced or Mid-Range Ejection Fraction. *Current pharmaceutical design*. 2017;23(22). doi:10.2174/1381612823666170317124125
45. Cunningham JW, Claggett BL, O'Meara E, et al. Effect of Sacubitril/Valsartan on Biomarkers of Extracellular Matrix Regulation in Patients With HFpEF. *Journal of the American College of Cardiology*. 2020;76(5):503-514. doi:10.1016/J.JACC.2020.05.072
46. López B, Querejeta R, González A, Larman M, Díez J. Collagen cross-linking but not collagen amount associates with elevated filling pressures in hypertensive patients with

- stage C heart failure: Potential role of lysyl oxidase. *Hypertension*. 2012;60(3):677-683. doi:10.1161/HYPERTENSIONAHA.112.196113
47. Raafs AG, Verdonschot JAJ, Henkens MTHM, et al. The combination of carboxy-terminal propeptide of procollagen type I blood levels and late gadolinium enhancement at cardiac magnetic resonance provides additional prognostic information in idiopathic dilated cardiomyopathy – A multilevel assessment of my. *European Journal of Heart Failure*. 2021;23(6):933-944. doi:10.1002/ejhf.2201
 48. López B, Querejeta R, Varo N, et al. Usefulness of serum carboxy-terminal propeptide of procollagen type I in assessment of the cardioreparative ability of antihypertensive treatment in hypertensive patients. *Circulation*. 2001;104(3):286-291. doi:10.1161/01.CIR.104.3.286
 49. Ferreira JP, Rossignol P, Pizard A, et al. Potential spironolactone effects on collagen metabolism biomarkers in patients with uncontrolled blood pressure. *Heart*. 2019;105(4):307-314. doi:10.1136/heartjnl-2018-313182
 50. Stienen S, Ferreira JP, Pitt B, et al. Eplerenone prevents an increase in serum carboxy-terminal propeptide of procollagen type I after myocardial infarction complicated by left ventricular dysfunction and/or heart failure. *European Journal of Heart Failure*. 2020;22(5):901-903. doi:10.1002/ejhf.1812
 51. Cleland JGFF, Ferreira JP, Mariotoni B, et al. The effect of spironolactone on cardiovascular function and markers of fibrosis in people at increased risk of developing heart failure: the heart “OMics” in AGEing (HOMAGE) randomized clinical trial. *European heart journal*. 2021;42(6):684-696. doi:10.1093/eurheartj/ehaa758
 52. López B, Querejeta R, González A, Sánchez E, Larman M, Díez J. Effects of loop diuretics on myocardial fibrosis and collagen type I turnover in chronic heart failure. *Journal of the American College of Cardiology*. 2004;43(11):2028-2035. doi:10.1016/j.jacc.2003.12.052
 53. Ravassa S, López B, Ferreira JP, et al. Biomarker-based assessment of collagen cross-linking identifies patients at risk of heart failure more likely to benefit from spironolactone effects on left atrial remodelling. Insights from the HOMAGE clinical trial. *European journal of heart failure*. 2022;24(2). doi:10.1002/EJHF.2394
 54. Ravassa S, Trippel T, Bach D, et al. Biomarker-based phenotyping of myocardial fibrosis identifies patients with heart failure with preserved ejection fraction resistant to the beneficial effects of spironolactone: results from the Aldo-DHF trial. *European Journal of Heart Failure*. 2018;20(9):1290-1299. doi:10.1002/ejhf.1194
 55. Klappacher G, Franzen P, Haab D, et al. Measuring extracellular matrix turnover in the serum of patients with idiopathic or ischemic dilated cardiomyopathy and impact on diagnosis and prognosis. *The American Journal of Cardiology*. 1995;75(14):913-918. doi:10.1016/S0002-9149(99)80686-9

56. Iraqi W, Rossignol P, Angioi M, et al. Extracellular cardiac matrix biomarkers in patients with acute myocardial infarction complicated by left ventricular dysfunction and heart failure: Insights from the Eplerenone Post-Acute Myocardial Infarction Heart Failure Efficacy and Survival Study (EPHESUS) study. *Circulation*. 2009;119(18):2471-2479. doi:10.1161/CIRCULATIONAHA.108.809194
57. Rosenberg M, Zugck C, Nelles M, et al. Osteopontin, a new prognostic biomarker in patients with chronic heart failure. *Circulation Heart failure*. 2008;1(1):43-49. doi:10.1161/CIRCHEARTFAILURE.107.746172
58. Naylor M, Short MI, Rasheed H, et al. Aptamer-Based Proteomic Platform Identifies Novel Protein Predictors of Incident Heart Failure and Echocardiographic Traits. *Circulation: Heart Failure*. 2020;13(5). doi:10.1161/CIRCHEARTFAILURE.119.006749
59. Reindl M, Reinstadler SJ, Feistritzer HJ, et al. Fibroblast growth factor 23 as novel biomarker for early risk stratification after ST-elevation myocardial infarction. *Heart (British Cardiac Society)*. 2017;103(11):856-862. doi:10.1136/HEARTJNL-2016-310520
60. Ferreira JP, Verdonschot J, Collier T, et al. Proteomic Bioprofiles and Mechanistic Pathways of Progression to Heart Failure: The HOMAGE Study. *Circulation: Heart Failure*. 2019;12(5). doi:10.1161/CIRCHEARTFAILURE.118.005897
61. Camici PG, Tschöpe C, di Carli MF, Rimoldi O, van Linthout S. Coronary microvascular dysfunction in hypertrophy and heart failure. *Cardiovascular research*. 2020;116(4):806-816. doi:10.1093/CVR/CVAA023
62. Shu Z, Tan J, Miao Y, Zhang Q. The role of microvesicles containing microRNAs in vascular endothelial dysfunction. *Journal of Cellular and Molecular Medicine*. 2019;23(12):7933-7945. doi:10.1111/jcmm.14716
63. Paulus WJ, Tschöpe C. A novel paradigm for heart failure with preserved ejection fraction: comorbidities drive myocardial dysfunction and remodeling through coronary microvascular endothelial inflammation. *Journal of the American College of Cardiology*. 2013;62(4):263-271. doi:10.1016/J.JACC.2013.02.092
64. Shantsila E, Wrigley BJ, Blann AD, Gill PS, Lip GYH. A contemporary view on endothelial function in heart failure. *European Journal of Heart Failure*. 2012;14(8):873-881. doi:10.1093/eurjhf/hfs066
65. Troncoso MF, Ortiz-Quintero J, Garrido-Moreno V, et al. VCAM-1 as a predictor biomarker in cardiovascular disease. *Biochimica et Biophysica Acta (BBA) - Molecular Basis of Disease*. 2021;1867(9):166170. doi:10.1016/j.bbadis.2021.166170
66. Shah SJ, Lam CSP, Svedlund S, et al. Prevalence and correlates of coronary microvascular dysfunction in heart failure with preserved ejection fraction: PROMIS-HFpEF. *European Heart Journal*. 2018;39(37):3439-3450. doi:10.1093/eurheartj/ehy531
67. Sanders-Van Wijk S, Tromp J, Beussink-Nelson L, et al. Proteomic Evaluation of the Comorbidity-Inflammation Paradigm in Heart Failure With Preserved Ejection Fraction:

- Results From the PROMIS-HFpEF Study. *Circulation*. 2020;142(21):2029-2044. doi:10.1161/CIRCULATIONAHA.120.045810
68. Tromp J, Hage C, Ouwerkerk W, et al. Biomarker Correlates of Coronary Microvascular Dysfunction in Heart Failure With Preserved Ejection Fraction. *Circulation*. 2019;140(16):1359-1361. doi:10.1161/CIRCULATIONAHA.119.042569
 69. Taqueti VR, Di Carli MF. Coronary Microvascular Disease Pathogenic Mechanisms and Therapeutic Options: JACC State-of-the-Art Review. *Journal of the American College of Cardiology*. 2018;72(21):2625-2641. doi:10.1016/j.jacc.2018.09.042
 70. Konst RE, Guzik TJ, Kaski JC, Maas AHEM, Elias-Smale SE. The pathogenic role of coronary microvascular dysfunction in the setting of other cardiac or systemic conditions. *Cardiovascular Research*. 2020;116(4):817-828. doi:10.1093/cvr/cvaa009
 71. Camici PG, Tschöpe C, Di Carli MF, Rimoldi O, Van Linthout S. Coronary microvascular dysfunction in hypertrophy and heart failure. *Cardiovascular Research*. 2020;116(4):806-816. doi:10.1093/cvr/cvaa023
 72. Baeyens N. Fluid shear stress sensing in vascular homeostasis and remodeling: Towards the development of innovative pharmacological approaches to treat vascular dysfunction. *Biochemical Pharmacology*. 2018;158:185-191. doi:10.1016/j.bcp.2018.10.023
 73. Balligand JL, Feron O, Dessy C. eNOS activation by physical forces: From short-term regulation of contraction to chronic remodeling of cardiovascular tissues. *Physiological Reviews*. 2009;89(2):481-534. doi:10.1152/physrev.00042.2007
 74. Cai H, Harrison DG. Endothelial dysfunction in cardiovascular diseases: The role of oxidant stress. *Circulation Research*. 2000;87(10):840-844. doi:10.1161/01.RES.87.10.840
 75. Emdin M, Aimo A, Castiglione V, Vergaro G, Georgiopoulos G, Saccaro LF, et al. Targeting Cyclic Guanosine Monophosphate to Treat Heart Failure. *J Am Coll Cardiol*. 2020;76:1795–1807.
 76. Barton M, Yanagisawa M. Endothelin: 30 Years From Discovery to Therapy. *Hypertension (Dallas, Tex : 1979)*. 2019;74(6):1232-1265. doi:10.1161/HYPERTENSIONAHA.119.12105
 77. Jankowich M, Choudhary G. Endothelin-1 levels and cardiovascular events. *Trends in Cardiovascular Medicine*. 2020;30(1):1-8. doi:10.1016/j.tcm.2019.01.007
 78. Schiffrin EL. Role of endothelin-1 in hypertension and vascular disease. In: *American Journal of Hypertension*. Vol 14. Elsevier Inc.; 2001. doi:10.1016/s0895-7061(01)02074-x
 79. Pacher R, Stanek B, Hülsmann M, et al. Prognostic impact of big endothelin-1 plasma concentrations compared with invasive hemodynamic evaluation in severe heart failure.

- Journal of the American College of Cardiology*. 1996;27(3):633-641. doi:10.1016/0735-1097(95)00520-X
80. Masson S, Latini R, Carbonieri E, et al. The predictive value of stable precursor fragments of vasoactive peptides in patients with chronic heart failure: data from the GISSI-heart failure (GISSI-HF) trial. *European journal of heart failure*. 2010;12(4):338-347. doi:10.1093/EURJHF/HFP206
 81. Heerspink HJL, Parving HH, Andress DL, et al. Atrasentan and renal events in patients with type 2 diabetes and chronic kidney disease (SONAR): a double-blind, randomised, placebo-controlled trial. *Lancet (London, England)*. 2019;393(10184):1937-1947. doi:10.1016/S0140-6736(19)30772-X
 82. McMurray JJV, Teerlink JR, Cotter G, et al. Effects of tezosentan on symptoms and clinical outcomes in patients with acute heart failure: The VERITAS randomized controlled trials. *Journal of the American Medical Association*. 2007;298(17):2009-2019. doi:10.1001/jama.298.17.2009
 83. Voors AA, Kremer D, Geven C, et al. Adrenomedullin in heart failure: pathophysiology and therapeutic application. *European Journal of Heart Failure*. 2019;21(2):163-171. doi:10.1002/ejhf.1366
 84. Koyama T, Ochoa-Callejero L, Sakurai T, et al. Vascular endothelial adrenomedullin-RAMP2 system is essential for vascular integrity and organ homeostasis. *Circulation*. 2013;127(7):842-853. doi:10.1161/CIRCULATIONAHA.112.000756
 85. Shah R V., Truong QA, Gaggin HK, Pfannkuche J, Hartmann O, Januzzi JL. Mid-regional pro-atrial natriuretic peptide and pro-adrenomedullin testing for the diagnostic and prognostic evaluation of patients with acute dyspnoea. *European heart journal*. 2012;33(17):2197-2205. doi:10.1093/EURHEARTJ/EHS136
 86. Maisel A, Mueller C, Nowak R, et al. Mid-region pro-hormone markers for diagnosis and prognosis in acute dyspnea: results from the BACH (Biomarkers in Acute Heart Failure) trial. *Journal of the American College of Cardiology*. 2010;55(19):2062-2076. doi:10.1016/J.JACC.2010.02.025
 87. Tolppanen H, Rivas-Lasarte M, Lassus J, et al. Adrenomedullin: a marker of impaired hemodynamics, organ dysfunction, and poor prognosis in cardiogenic shock. *Annals of Intensive Care*. 2017;7(1). doi:10.1186/s13613-016-0229-2
 88. Kremer D, ter Maaten JM, Voors AA. Bio-adrenomedullin as a potential quick, reliable, and objective marker of congestion in heart failure. *European Journal of Heart Failure*. 2018;20(9):1363-1365. doi:10.1002/ejhf.1245
 89. Arfsten H, Goliash G, Bartko PE, et al. Increased concentrations of bioactive adrenomedullin subsequently to angiotensin-receptor/neprilysin-inhibitor treatment in chronic systolic heart failure. *British Journal of Clinical Pharmacology*. 2021;87(3):916-924. doi:10.1111/bcp.14442

90. Deniau B, Takagi K, Asakage A, Mebazaa A. Adrecizumab: an investigational agent for the biomarker-guided treatment of sepsis. *Expert Opinion on Investigational Drugs*. 2021;30(2):95-102. doi:10.1080/13543784.2021.1857365
91. Steffens S, van Linthout S, Sluijter JPG, Tocchetti CG, Thum T, Madonna R. Stimulating pro-reparative immune responses to prevent adverse cardiac remodelling: consensus document from the joint 2019 meeting of the ESC Working Groups of cellular biology of the heart and myocardial function. *Cardiovascular research*. 2020;116(11):1850-1862. doi:10.1093/CVR/CVAA137
92. Swirski FK, Nahrendorf M. Cardioimmunology: the immune system in cardiac homeostasis and disease. *Nature Reviews Immunology*. 2018;18(12):733-744. doi:10.1038/s41577-018-0065-8
93. Chen B, Frangogiannis NG. The Role of Macrophages in Nonischemic Heart Failure *. *JACC: Basic to Translational Science*. 2018;3(2):245-248. doi:10.1016/j.jacbts.2018.03.001
94. Van Linthout S, Tschöpe C. The Quest for Antiinflammatory and Immunomodulatory Strategies in Heart Failure. *Clinical pharmacology and therapeutics*. 2019;106(6):1198-1208. doi:10.1002/CPT.1637
95. Dick SA, Epelman S. Chronic heart failure and inflammation. *Circulation Research*. 2016;119(1):159-176. doi:10.1161/CIRCRESAHA.116.308030
96. De Boer RA, Daniels LB, Maisel AS, Januzzi JL. State of the Art: Newer biomarkers in heart failure. *European Journal of Heart Failure*. 2015;17(6):559-569. doi:10.1002/ejhf.273
97. Chaikijurajai T, Tang WHW. Reappraisal of Inflammatory Biomarkers in Heart Failure. *Current heart failure reports*. 2020;17(1):9. doi:10.1007/S11897-019-00450-1
98. Mann DL, McMurray JJV, Packer M, et al. Targeted Anticytokine Therapy in Patients with Chronic Heart Failure: Results of the Randomized Etanercept Worldwide Evaluation (RENEWAL). *Circulation*. 2004;109(13):1594-1602. doi:10.1161/01.CIR.0000124490.27666.B2
99. Kalayci A, Peacock WF, Nagurney JT, et al. Echocardiographic assessment of insulin-like growth factor binding protein-7 and early identification of acute heart failure. *ESC heart failure*. 2020;7(4):1664-1675. doi:10.1002/EHF2.12722
100. Hage C, Bjerre M, Frystyk J, et al. Comparison of Prognostic Usefulness of Serum Insulin-Like Growth Factor-Binding Protein 7 in Patients With Heart Failure and Preserved Versus Reduced Left Ventricular Ejection Fraction. *The American Journal of Cardiology*. 2018;121(12):1558-1566. doi:10.1016/J.AMJCARD.2018.02.041
101. Marinković G, Koenis DS, De Camp L, et al. S100A9 Links Inflammation and Repair in Myocardial Infarction. *Circulation research*. 2020;127(5):664-676. doi:10.1161/CIRCRESAHA.120.315865

102. Cotoi OS, Dunér P, Ko N, et al. Plasma S100A8/A9 correlates with blood neutrophil counts, traditional risk factors, and cardiovascular disease in middle-aged healthy individuals. *Arteriosclerosis, thrombosis, and vascular biology*. 2014;34(1):202-210. doi:10.1161/ATVBAHA.113.302432
103. Ma LP, Haugen E, Ikemoto M, Fujita M, Terasaki F, Fu M. S100A8/A9 complex as a new biomarker in prediction of mortality in elderly patients with severe heart failure. *International journal of cardiology*. 2012;155(1):26-32. doi:10.1016/J.IJCARD.2011.01.082
104. De Boer RA, Voors AA, Muntendam P, Van Gilst WH, Van Veldhuisen DJ. Galectin-3: A novel mediator of heart failure development and progression. *European Journal of Heart Failure*. 2009;11(9):811-817. doi:10.1093/eurjhf/hfp097
105. Rabkin SW, Tang JKK. The utility of growth differentiation factor-15, galectin-3, and sST2 as biomarkers for the diagnosis of heart failure with preserved ejection fraction and compared to heart failure with reduced ejection fraction: a systematic review. *Heart failure reviews*. 2021;26(4):799-812. doi:10.1007/S10741-020-09913-3
106. Meijers WC, Januzzi JL, Defilippi C, et al. Elevated plasma galectin-3 is associated with near-term rehospitalization in heart failure: A pooled analysis of 3 clinical trials. *American Heart Journal*. 2014;167(6). doi:10.1016/j.ahj.2014.02.011
107. Imran TF, Shin HJ, Mathenge N, et al. Meta-Analysis of the Usefulness of Plasma Galectin-3 to Predict the Risk of Mortality in Patients With Heart Failure and in the General Population. *American Journal of Cardiology*. 2017;119(1):57-64. doi:10.1016/j.amjcard.2016.09.019
108. Suthahar N, Meijers WC, Silljé HHW, Ho JE, Liu FT, de Boer RA. Galectin-3 activation and inhibition in heart failure and cardiovascular disease: An update. *Theranostics*. 2018;8(3):593-609. doi:10.7150/thno.22196
109. Aimo A, Vergaro G, Passino C, et al. Prognostic Value of Soluble Suppression of Tumorigenicity-2 in Chronic Heart Failure: A Meta-Analysis. *JACC: Heart Failure*. 2017;5(4):280-286. doi:10.1016/j.jchf.2016.09.010
110. Aimo A, Januzzi JL, Bayes-Genis A, et al. Clinical and Prognostic Significance of sST2 in Heart Failure: JACC Review Topic of the Week. *Journal of the American College of Cardiology*. 2019;74(17):2193-2203. doi:10.1016/j.jacc.2019.08.1039
111. Sharim J, Daniels LB. Soluble ST2 and Soluble Markers of Fibrosis: Emerging Roles for Prognosis and Guiding Therapy. *Current Cardiology Reports*. 2020;22(6). doi:10.1007/s11886-020-01288-z
112. Chang KW, Fox S, Mojaver S, Maisel AS. Using biomarkers to guide heart failure management. *Expert Review of Cardiovascular Therapy*. 2017;15(10):729-741. doi:10.1080/14779072.2017.1366312

113. Zile MR, O'Meara E, Claggett B, et al. Effects of Sacubitril/Valsartan on Biomarkers of Extracellular Matrix Regulation in Patients With HFrEF. *Journal of the American College of Cardiology*. 2019;73(7):795-806. doi:10.1016/J.JACC.2018.11.042
114. Weir RAP, Miller AM, Murphy GEJ, et al. Serum soluble ST2: a potential novel mediator in left ventricular and infarct remodeling after acute myocardial infarction. *Journal of the American College of Cardiology*. 2010;55(3):243-250. doi:10.1016/J.JACC.2009.08.047
115. Poller W, Dimmeler S, Heymans S, et al. Non-coding RNAs in cardiovascular diseases: Diagnostic and therapeutic perspectives. *European Heart Journal*. 2018;39(29):2704-2716. doi:10.1093/eurheartj/ehx165
116. Lu D, Thum T. RNA-based diagnostic and therapeutic strategies for cardiovascular disease. *Nature reviews Cardiology*. 2019;16(11):661-674. doi:10.1038/S41569-019-0218-X
117. Hullinger TG, Montgomery RL, Seto AG, et al. Inhibition of miR-15 protects against cardiac ischemic injury. *Circulation Research*. 2012;110(1):71-81. doi:10.1161/CIRCRESAHA.111.244442
118. Bernardo BC, Gao XM, Winbanks CE, et al. Therapeutic inhibition of the miR-34 family attenuates pathological cardiac remodeling and improves heart function. *Proceedings of the National Academy of Sciences of the United States of America*. 2012;109(43):17615-17620. doi:10.1073/pnas.1206432109
119. Chamorro-Jorganes A, Lee MY, Araldi E, et al. VEGF-Induced Expression of miR-17-92 Cluster in Endothelial Cells Is Mediated by ERK/ELK1 Activation and Regulates Angiogenesis. *Circulation Research*. 2016;118(1):38-47. doi:10.1161/CIRCRESAHA.115.307408
120. Hu S, Huang M, Li Z, et al. MicroRNA-210 as a novel therapy for treatment of ischemic heart disease. *Circulation*. 2010;122(11 SUPPL. 1). doi:10.1161/CIRCULATIONAHA.109.928424
121. Van Rooij E, Sutherland LB, Qi X, Richardson JA, Hill J, Olson EN. Control of stress-dependent cardiac growth and gene expression by a microRNA. *Science*. 2007;316(5824):575-579. doi:10.1126/science.1139089
122. Carè A, Catalucci D, Felicetti F, et al. MicroRNA-133 controls cardiac hypertrophy. *Nature Medicine*. 2007;13(5):613-618. doi:10.1038/nm1582
123. Thum T, Gross C, Fiedler J, et al. MicroRNA-21 contributes to myocardial disease by stimulating MAP kinase signalling in fibroblasts. *Nature*. 2008;456(7224):980-984. doi:10.1038/nature07511
124. Ucar A, Gupta SK, Fiedler J, et al. The miRNA-212/132 family regulates both cardiac hypertrophy and cardiomyocyte autophagy. *Nature Communications*. 2012;3. doi:10.1038/ncomms2090

125. Batkai S, Genschel C, Viereck J, et al. CDR132L improves systolic and diastolic function in a large animal model of chronic heart failure. *European Heart Journal*. 2021;42(2):192-201. doi:10.1093/eurheartj/ehaa791
126. Hinkel R, Batkai S, Bähr A, et al. AntimiR-132 Attenuates Myocardial Hypertrophy in an Animal Model of Percutaneous Aortic Constriction. *Journal of the American College of Cardiology*. 2021;77(23):2923-2935. doi:10.1016/J.JACC.2021.04.028
127. Täubel J, Hauke W, Rump S, et al. Novel antisense therapy targeting microRNA-132 in patients with heart failure: Results of a first-in-human Phase 1b randomized, double-blind, placebo-controlled study. *European Heart Journal*. 2021;42(2):178-188. doi:10.1093/eurheartj/ehaa898
128. Viereck J, Kumarswamy R, Foinquinos A, et al. Long noncoding RNA Chast promotes cardiac remodeling. *Science Translational Medicine*. 2016;8(326). doi:10.1126/scitranslmed.aaf1475
129. Viereck J, Bürke A, Foinquinos A, et al. Targeting muscle-enriched long non-coding RNA H19 reverses pathological cardiac hypertrophy. *European Heart Journal*. 2020;41(36):3462-3474. doi:10.1093/eurheartj/ehaa519
130. Han P, Li W, Lin CH, et al. A long noncoding RNA protects the heart from pathological hypertrophy. *Nature*. 2014;514(7520):102-106. doi:10.1038/nature13596
131. Micheletti R, Plaisance I, Abraham BJ, et al. The long noncoding RNA Wisper controls cardiac fibrosis and remodeling. *Science Translational Medicine*. 2017;9(395). doi:10.1126/scitranslmed.aai9118
132. Piccoli MT, Gupta SK, Viereck J, et al. Inhibition of the cardiac fibroblast-enriched lncRNA Meg3 prevents cardiac fibrosis and diastolic dysfunction. *Circulation Research*. 2017;121(5):575-583. doi:10.1161/CIRCRESAHA.117.310624
133. Viereck J, Thum T. Circulating Noncoding RNAs as Biomarkers of Cardiovascular Disease and Injury. *Circulation Research*. 2017;120(2):381-399. doi:10.1161/CIRCRESAHA.116.308434
134. Fritz J V., Heintz-Buschart A, Ghosal A, et al. Sources and Functions of Extracellular Small RNAs in Human Circulation. *Annual Review of Nutrition*. 2016;36:301-336. doi:10.1146/annurev-nutr-071715-050711
135. D'Alessandra Y, Devanna P, Limana F, et al. Circulating microRNAs are new and sensitive biomarkers of myocardial infarction. *European Heart Journal*. 2010;31(22):2765. doi:10.1093/EURHEARTJ/EHQ167
136. Wang F, Long G, Zhao C, et al. Plasma microRNA-133a is a new marker for both acute myocardial infarction and underlying coronary artery stenosis. *Journal of Translational Medicine*. 2013;11(1). doi:10.1186/1479-5876-11-222

137. Wang GK, Zhu JQ, Zhang JT, et al. Circulating microRNA: A novel potential biomarker for early diagnosis of acute myocardial infarction in humans. *European Heart Journal*. 2010;31(6):659-666. doi:10.1093/eurheartj/ehq013
138. Zhang L, Chen X, Su T, et al. Circulating miR-499 are novel and sensitive biomarker of acute myocardial infarction. *Journal of Thoracic Disease*. 2015;7(3):303-308. doi:10.3978/j.issn.2072-1439.2015.02.05
139. Widera C, Gupta SK, Lorenzen JM, et al. Diagnostic and prognostic impact of six circulating microRNAs in acute coronary syndrome. *Journal of Molecular and Cellular Cardiology*. 2011;51(5):872-875. doi:10.1016/j.yjmcc.2011.07.011
140. Chen YT, Wong LL, Liew OW, Richards AM. Heart Failure with Reduced Ejection Fraction (HFrEF) and Preserved Ejection Fraction (HFpEF): The Diagnostic Value of Circulating MicroRNAs. *Cells*. 2019;8(12). doi:10.3390/cells8121651
141. Wong LL, Zou R, Zhou L, et al. Combining Circulating MicroRNA and NT-proBNP to Detect and Categorize Heart Failure Subtypes. *Journal of the American College of Cardiology*. 2019;73(11):1300-1313. doi:10.1016/j.jacc.2018.11.060
142. Masson S, Batkai S, Beermann J, et al. Circulating microRNA-132 levels improve risk prediction for heart failure hospitalization in patients with chronic heart failure. *European Journal of Heart Failure*. 2018;20(1):78-85. doi:10.1002/ejhf.961
143. Kumarswamy R, Bauters C, Volkman I, et al. Circulating long noncoding RNA, LIPCAR, predicts survival in patients with heart failure. *Circulation Research*. 2014;114(10):1569-1575. doi:10.1161/CIRCRESAHA.114.303915
144. Santer L, López B, Ravassa S, et al. Circulating long noncoding RNA LIPCAR Predicts heart failure outcomes in patients without chronic kidney disease. *Hypertension*. 2019;73(4):820-828. doi:10.1161/HYPERTENSIONAHA.118.12261
145. Vausort M, Wagner DR, Devaux Y. Long noncoding RNAs in patients with acute myocardial infarction. *Circulation Research*. 2014;115(7):668-677. doi:10.1161/CIRCRESAHA.115.303836
146. Häntzsch M, Tolios A, Beutner F, et al. Comparison of whole blood RNA preservation tubes and novel generation RNA extraction kits for analysis of mRNA and miRNA profiles. *PLoS ONE*. 2014;9(12). doi:10.1371/journal.pone.0113298
147. Schwarzenbach H, Da Silva AM, Calin G, Pantel K. Data normalization strategies for microRNA quantification. *Clinical Chemistry*. 2015;61(11):1333-1342. doi:10.1373/clinchem.2015.239459
148. Donati S, Ciuffi S, Brandi ML. Human circulating miRNAs real-time qRT-PCR-based analysis: An overview of endogenous reference genes used for data normalization. *International Journal of Molecular Sciences*. 2019;20(18). doi:10.3390/ijms20184353

149. Nguyen BY, Azam T, Wang X. Cellular signaling cross-talk between different cardiac cell populations: An insight into the role of exosomes in the heart diseases and therapy. *American Journal of Physiology - Heart and Circulatory Physiology*. 2021;320(4):H1213-H1234. doi:10.1152/AJPHEART.00718.2020
150. Waldenström A, Ronquist G. Role of exosomes in myocardial remodeling. *Circulation Research*. 2014;114(2):315-324. doi:10.1161/CIRCRESAHA.114.300584
151. Sahoo S, Adamiak M, Mathiyalagan P, Kenneweg F, Kafert-Kasting S, Thum T. Therapeutic and Diagnostic Translation of Extracellular Vesicles in Cardiovascular Diseases: Roadmap to the Clinic. *Circulation*. 2021;143(14):1426-1449. doi:10.1161/CIRCULATIONAHA.120.049254
152. Wang X, Morelli MB, Matarese A, Sardu C, Santulli G. Cardiomyocyte-derived exosomal microRNA-92a mediates post-ischemic myofibroblast activation both in vitro and ex vivo. *ESC Heart Failure*. 2020;7(1):284-288. doi:10.1002/ehf2.12584
153. Tian C, Gao L, Zimmerman MC, Zucker IH. Myocardial infarction-induced microRNA-enriched exosomes contribute to cardiac Nrf2 dysregulation in chronic heart failure. *American Journal of Physiology - Heart and Circulatory Physiology*. 2018;314(5):H928-H939. doi:10.1152/ajpheart.00602.2017
154. Bang C, Batkai S, Dangwal S, et al. Cardiac fibroblast-derived microRNA passenger strand-enriched exosomes mediate cardiomyocyte hypertrophy. *Journal of Clinical Investigation*. 2014;124(5):2136-2146. doi:10.1172/JCI70577
155. Ribeiro-Rodrigues TM, Laundos TL, Pereira-Carvalho R, et al. Exosomes secreted by cardiomyocytes subjected to ischaemia promote cardiac angiogenesis. *Cardiovascular Research*. 2017;113(11):1338-1350. doi:10.1093/cvr/cvx118
156. Kenneweg F, Bang C, Xiao K, et al. Long Noncoding RNA-Enriched Vesicles Secreted by Hypoxic Cardiomyocytes Drive Cardiac Fibrosis. *Molecular Therapy - Nucleic Acids*. 2019;18:363-374. doi:10.1016/j.omtn.2019.09.003
157. Wu R, Gao W, Yao K, Ge J. Roles of exosomes derived from immune cells in cardiovascular diseases. *Frontiers in Immunology*. 2019;10(MAR). doi:10.3389/fimmu.2019.00648
158. Biemmi V, Milano G, Ciullo A, et al. Inflammatory extracellular vesicles prompt heart dysfunction via TRL4-dependent NF-κB activation. *Theranostics*. 2020;10(6):2773-2790. doi:10.7150/thno.39072
159. Diamant M, Nieuwland R, Pablo RF, Sturk A, Smit JWA, Radder JK. Elevated numbers of tissue-factor exposing microparticles correlate with components of the metabolic syndrome in uncomplicated type 2 diabetes mellitus. *Circulation*. 2002;106(19):2442-2447. doi:10.1161/01.CIR.0000036596.59665.C6

160. Bayes-Genis A, Liu PP, Lanfear DE, et al. Omics phenotyping in heart failure: The next frontier. *European Heart Journal*. 2020;41(36):3477-3484. doi:10.1093/eurheartj/ehaa270
161. Chung NC, Choi H, Wang D, et al. Identifying temporal molecular signatures underlying cardiovascular diseases: A data science platform. *Journal of Molecular and Cellular Cardiology*. 2020;145:54-58. doi:10.1016/j.yjmcc.2020.05.020
162. Tromp J, Westenbrink BD, Ouwerkerk W, et al. Identifying Pathophysiological Mechanisms in Heart Failure With Reduced Versus Preserved Ejection Fraction. *Journal of the American College of Cardiology*. 2018;72(10):1081-1090. doi:10.1016/J.JACC.2018.06.050
163. Chan MY, Efthymios M, Tan SH, et al. Prioritizing Candidates of Post-Myocardial Infarction Heart Failure Using Plasma Proteomics and Single-Cell Transcriptomics. *Circulation*. 2020;142(15):1408-1421. doi:10.1161/CIRCULATIONAHA.119.045158
164. Ferreira JP, Verdonschot J, Wang P, et al. Proteomic and Mechanistic Analysis of Spironolactone in Patients at Risk for HF. *JACC Heart failure*. 2021;9(4):268-277. doi:10.1016/J.JCHF.2020.11.010
165. Ackers-Johnson M, Tan WLW, Foo RSY. Following hearts, one cell at a time: recent applications of single-cell RNA sequencing to the understanding of heart disease. *Nature Communications*. 2018;9(1). doi:10.1038/s41467-018-06894-8
166. Gladka MM, Molenaar B, De Ruiter H, et al. Single-Cell Sequencing of the Healthy and Diseased Heart Reveals Cytoskeleton-Associated Protein 4 as a New Modulator of Fibroblasts Activation. *Circulation*. 2018;138(2):166-180. doi:10.1161/CIRCULATIONAHA.117.030742
167. Wang L, Yu P, Zhou B, et al. Single-cell reconstruction of the adult human heart during heart failure and recovery reveals the cellular landscape underlying cardiac function. *Nature Cell Biology*. 2020;22(1):108-119. doi:10.1038/s41556-019-0446-7
168. McLellan MA, Skelly DA, Dona MSI, et al. High-Resolution Transcriptomic Profiling of the Heart during Chronic Stress Reveals Cellular Drivers of Cardiac Fibrosis and Hypertrophy. *Circulation*. 2020;142(15):1448-1463. doi:10.1161/CIRCULATIONAHA.119.045115
169. Kuppe C, Ramirez Flores RO, Li Z, et al. Spatial multi-omic map of human myocardial infarction. *bioRxiv*. Published online January 1, 2020:2020.12.08.411686. doi:10.1101/2020.12.08.411686
170. Meder B, Haas J, Sedaghat-Hamedani F, et al. Epigenome-Wide Association Study Identifies Cardiac Gene Patterning and a Novel Class of Biomarkers for Heart Failure. *Circulation*. 2017;136(16):1528-1544. doi:10.1161/CIRCULATIONAHA.117.027355
171. Movassagh M, Choy MK, Knowles DA, et al. Distinct epigenomic features in end-stage failing human hearts. *Circulation*. 2011;124(22):2411-2422. doi:10.1161/CIRCULATIONAHA.111.040071

172. Tan WLW, Anene-Nzulu CG, Wong E, et al. Epigenomes of human hearts reveal new genetic variants relevant for cardiac disease and phenotype. *Circulation Research*. 2020;127(6):761-777. doi:10.1161/CIRCRESAHA.120.317254
173. Gacita AM, Fullenkamp DE, Ohiri J, et al. Genetic Variation in Enhancers Modifies Cardiomyopathy Gene Expression and Progression. *Circulation*. 2021;143(13):1302-1316. doi:10.1161/CIRCULATIONAHA.120.050432
174. Jaiswal S, Natarajan P, Silver AJ, et al. Clonal Hematopoiesis and Risk of Atherosclerotic Cardiovascular Disease. *New England Journal of Medicine*. 2017;377(2):111-121. doi:10.1056/nejmoa1701719
175. Assmus B, Cremer S, Kirschbaum K, et al. Clonal haematopoiesis in chronic ischaemic heart failure: Prognostic role of clone size for DNMT3A-and TET2-driver gene mutations. *European Heart Journal*. 2021;42(3):257-265. doi:10.1093/eurheartj/ehaa845
176. Krasny L, Huang PH. Data-independent acquisition mass spectrometry (DIA-MS) for proteomic applications in oncology. *Molecular Omics*. 2021;17(1):29-42. doi:10.1039/d0mo00072h
177. Michelhaugh SA, Januzzi JL. Finding a Needle in a Haystack: Proteomics in Heart Failure. *JACC: Basic to Translational Science*. 2020;5(10):1043-1053. doi:10.1016/j.jacbts.2020.07.007
178. Wells QS, Gupta DK, Smith JG, et al. Accelerating Biomarker Discovery Through Electronic Health Records, Automated Biobanking, and Proteomics. *Journal of the American College of Cardiology*. 2019;73(17):2195-2205. doi:10.1016/j.jacc.2019.01.074
179. Müller OJ, Heckmann MB, Ding L, et al. Comprehensive plasma and tissue profiling reveals systemic metabolic alterations in cardiac hypertrophy and failure. *Cardiovascular Research*. 2019;115(8):1296-1305. doi:10.1093/cvr/cvy274
180. Razavi AC, Bazzano LA, He J, et al. Pseudouridine and N-formylmethionine associate with left ventricular mass index: Metabolome-wide association analysis of cardiac remodeling. *Journal of Molecular and Cellular Cardiology*. 2020;140:22-29. doi:10.1016/j.yjmcc.2020.02.005
181. Hunter WG, Kelly JP, McGarrah RW, Kraus WE, Shah SH. Metabolic Dysfunction in Heart Failure: Diagnostic, Prognostic, and Pathophysiologic Insights From Metabolomic Profiling. *Current Heart Failure Reports*. 2016;13(3):119-131. doi:10.1007/s11897-016-0289-5
182. Weldy CS, Ashley EA. Towards precision medicine in heart failure. *Nature reviews Cardiology*. 2021;18(11):745-762. doi:10.1038/S41569-021-00566-9

Table 1. Selection of proposed circulating biomarkers of cardiac remodelling currently being measured

Biomarker	Cellular Origin	Reflects/Involved	Triggering factors	Assay performance*
BNP, NT-proBNP	Cardiomyocytes	Cardiomyocyte stress	Stretch Neurohumoral Cytokines Hypoxia	Clinical
Troponins	Cardiomyocytes	Cardiomyocyte damage	Ischemia Inflammation	Clinical
GDF-15	Macrophages, Smooth muscle Endothelium Cardiomyocytes	Hypertrophy Fibrosis Inflammation Endothelial dysfunction	Myocardial injury Stretch Neurohumoral Cytokines	Clinical
PICP, PIIINP, C1P, MMP-1	Fibroblasts	Fibrosis/ECM	Neurohumoral Pressure overload. Inflammation. Cytokines	Research
Adhesion molecules (E-selectin, VCAM-1, ICAM-1)	Endothelium	Endothelial dysfunction	Inflammation.	Research
Endothelin-1	Endothelium	Vasoconstriction	Mechanical stress Hyperglycemia, Neurohumoral Cytokines	Research
Adrenomedullin	Endothelium Smooth muscle and others	Vascular permeability Vasodilation	Pressure & volume overload	Research

		Congestion		
Cytokines (ILs, TNF- α)	Leukocytes	Inflammation Fibrosis Endothelial dysfunction	Inflammation	Clinical & Research
Soluble ST-2	Lung Endothelium Cardiomyocytes	Inflammation Fibrosis Congestion	Hemodynamic stress Inflammation	Clinical
Galectin-3	Leukocytes and others	Inflammation and fibrosis	Inflammation Neurohumoral	Research
MicroRNA-208 MicroRNA-499	Cardiomyocytes	Cardiomyocyte injury	Ischemia	Research

BNP stands for B-type natriuretic peptide; NT-proBNP, amino-terminal fragment of proBNP; GDF-15, growth differentiation factor-15; PICP, procollagen type I carboxy-terminal propeptide; PIIINP, procollagen type III amino-terminal propeptide; C1P, collagen type I carboxy-terminal telopeptide; MMP-1, matrix metalloproteinase-1; VCAM-1, vascular cell adhesion molecule-1; ICAM-1, intercellular adhesion molecule 1; ILs, interleukins; TNF- α , tumour necrosis factor- α ; ECM, extracellular matrix.

*, Those biomarkers with assays available for automatized clinical diagnostic platforms or approved for clinical diagnosis are referred to as clinical, whereas those with assays developed for research only as referred as research.

FIGURES

Figure 1: Cardiomyocyte-derived biomarkers. Cardiomyocytes release natriuretic peptides (A-type and B-type natriuretic peptides [ANP and BNP, respectively]) in response to increased left ventricular wall stress which in turn regulate cardiac hypertrophy, exerting namely anti-hypertrophic effects. Cardiac troponins are released upon cardiac injury that leads to cardiomyocyte necrosis, apoptosis or increased wall permeability. Growth-differentiation factor-15 (GDF-15) is produced by cardiomyocytes among other cells in response to cardiac damage and is involved in autocrine/paracrine effects on different cardiac cells. Similarly, cardiomyocytes release non-coding RNAs and extracellular vesicles (EVs) which are not only biomarkers of cardiomyocyte alterations but also have a pathophysiological impact on different cardiac cells.

Figure 2: Collagen-derived peptides. Collagen type I is the most abundant type of collagen in the myocardium. It is produced and secreted into the interstitium by myofibroblasts/activated fibroblasts as procollagen. Procollagen is processed by procollagen carboxy-proteinase (PCP) and procollagen amino-proteinase (PNP), releasing carboxy-terminal (PICP) and amino-terminal (PNP) propeptides. PICP must be excised to form collagen fibrils. PICP reaches the bloodstream and can be assessed as a biomarker of collagen synthesis. Collagen cross-linking (CCL) stabilizes mature collagen fibres in a process mostly mediated by lysyl oxidases (LOX). Increased collagen cross-linking makes fibres stiffer and more resistant to degradation. Therefore, the higher cross-linking the less collagen type I carboxy-terminal telopeptide (CITP) is released by matrix metalloproteinase-1 (MMP-1). MMP-1 and CITP also enter the circulation and their ratio is inversely associated with the degree of collagen cross-linking. Higher serum PICP (*upper right panel*) was associated with a worse prognosis (all-cause mortality, heart transplantation, life-threatening ventricular arrhythmias, and heart failure hospitalization) in patients with idiopathic dilated cardiomyopathy presenting cardiac late gadolinium enhancement by magnetic resonance imaging (adapted from reference ⁴⁷). Lower CITP:MMP-1 (*lower right panel*) was associated with a higher risk of heart failure hospitalization or cardiovascular death in hypertensive heart failure patients (adapted from reference ³⁸).

Figure 3: Endothelium and inflammation-related biomarkers. Dysfunctional endothelial cells express adhesion molecules (e.g., E-selectin, vascular cell adhesion

molecule-1 [VCAM-1]), that facilitate leukocyte infiltration. Activated endothelial cells also release von Willebrand factor. In this condition there is also a decrease in nitric oxide (NO) release and bioavailability and an increase in reactive oxygen species (ROS) that can have autocrine and paracrine effects on endothelial cells and other cardiac cells. Endothelial cells also produce C type natriuretic peptide (CNP) endothelin-1 (ET-1) and adrenomedullin (ADM). Similarly, they release non-coding RNAs and extracellular vesicles (EVs) that are not only biomarkers of endothelial cells alterations but also have a pathophysiological impact on other cardiac cells. Infiltrated leukocytes release a number of cytokines and growth factors including interleukins-1 and -6, tumour necrosis factor- α (TNF- α), transforming growth factor- β (TGF- β), galectin-3 (Gal-3), which have pleiotropic effect on the myocardium.

Graphical abstract. Integrated view of different cell types, derived-biomarkers and their pathophysiological impact in cardiac remodelling. At the histocellular level cardiac remodelling is the result of alterations in all cell types present in the myocardium, which also interact closely with each other in response to cardiac damage, injury, neurohormonal activation and stress. A number of molecules are potential circulating biomarkers of the different features of cardiac remodelling. A combination of such biomarkers will provide incremental information of the major histocellular alterations present in HF patients. BNP stands for B-type natriuretic peptide; NT-proBNP, amino-terminal fragment of proBNP; MRpro-ANP, mid-regional pro-atrial natriuretic peptide; GDF-15, growth differentiation factor-15; ncRNAs, non-coding RNAs; EVs. Extracellular vesicles; PICP, procollagen type I carboxy-terminal propeptide; PIIINP, procollagen type III amino-terminal propeptide; CITP, collagen type I carboxy-terminal telopeptide; MMP-1, matrix metalloproteinase-1; sST-2, soluble ST2; TGF- β , transforming growth factor- β ; TNF- α , tumour necrosis factor- α ; VCAM-1, vascular cell adhesion molecule-1; vW, von Willebrand; ADM, adrenomedullin; CNP. C-type natriuretic peptide.

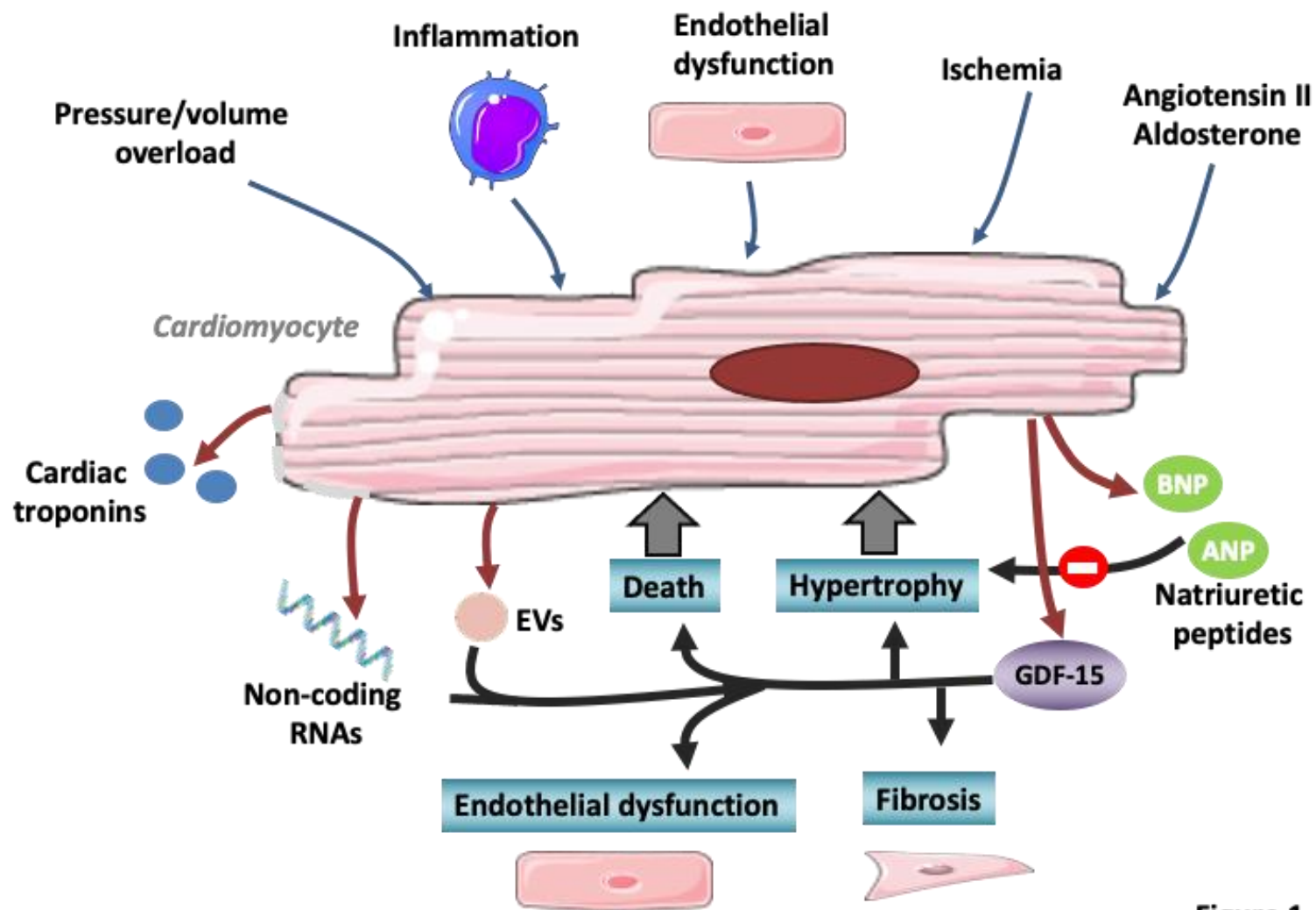


Figure 1

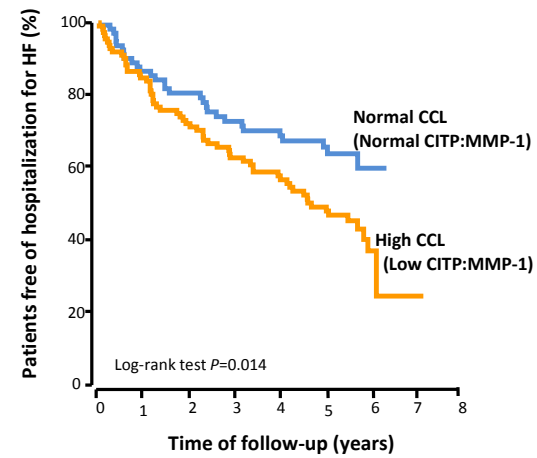
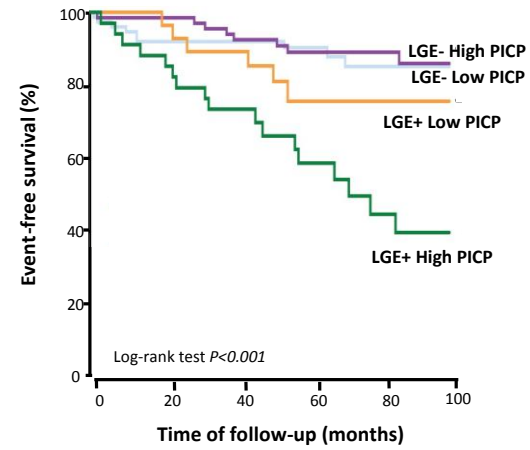
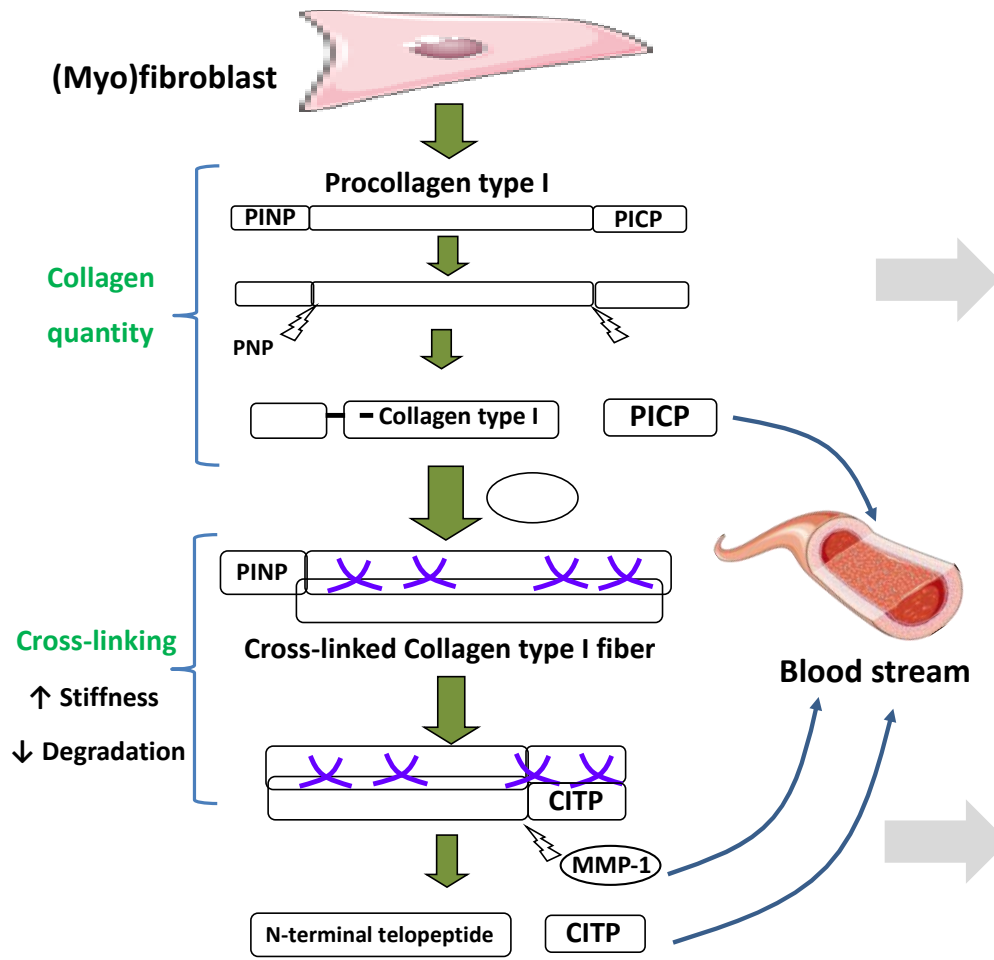


Figure 2

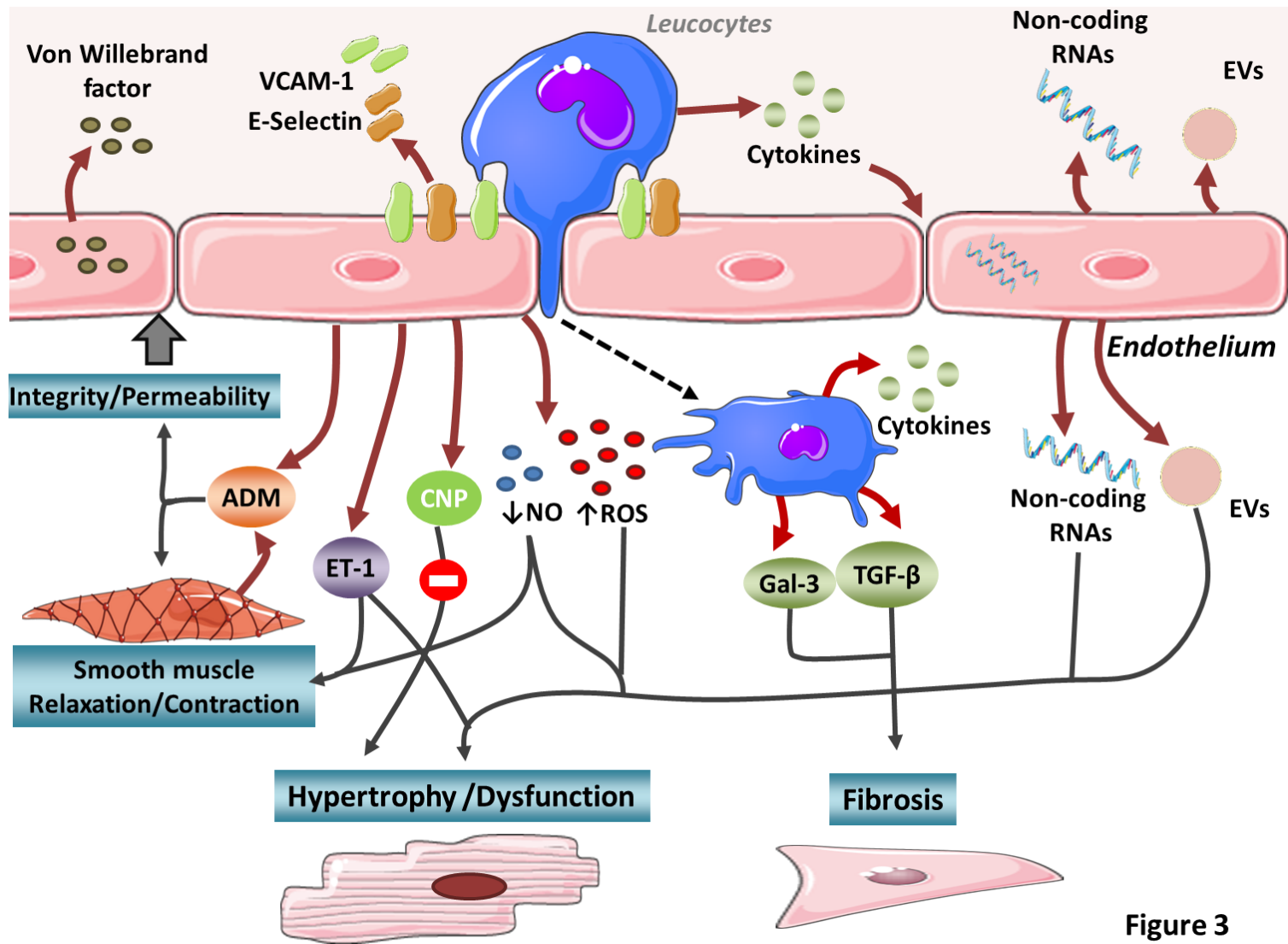
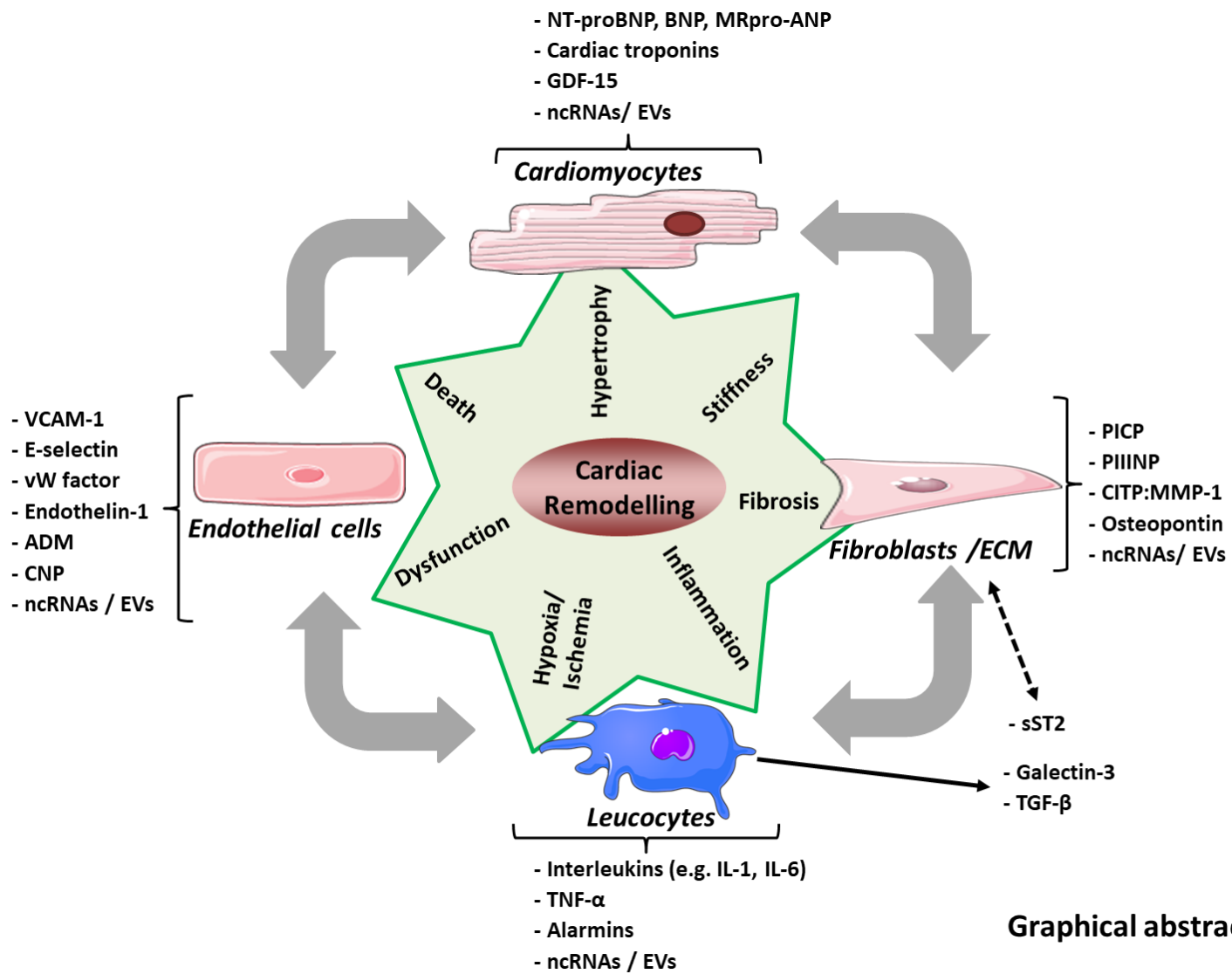


Figure 3



Graphical abstract