



## Empagliflozin in Black Versus White Patients With Heart Failure

Subodh Verma, Nitish K. Dhingra, Javed Butler, Stefan D. Anker, João Pedro Ferreira, Gerasimos Filippatos, James L. Januzzi, Carolyn S.P. Lam, Naveed Sattar, Egon Pfarr, et al.

### ► To cite this version:

Subodh Verma, Nitish K. Dhingra, Javed Butler, Stefan D. Anker, João Pedro Ferreira, et al.. Empagliflozin in Black Versus White Patients With Heart Failure: Analysis of EMPEROR-Pooled. *Circulation*, 2023, 147 (1), pp.101-104. 10.1161/CIRCULATIONAHA.122.062644 . hal-04023200v1

**HAL Id: hal-04023200**

**<https://hal.univ-lorraine.fr/hal-04023200v1>**

Submitted on 10 Mar 2023 (v1), last revised 10 Mar 2023 (v2)

**HAL** is a multi-disciplinary open access archive for the deposit and dissemination of scientific research documents, whether they are published or not. The documents may come from teaching and research institutions in France or abroad, or from public or private research centers.

L'archive ouverte pluridisciplinaire **HAL**, est destinée au dépôt et à la diffusion de documents scientifiques de niveau recherche, publiés ou non, émanant des établissements d'enseignement et de recherche français ou étrangers, des laboratoires publics ou privés.

**Research Letter**

**Empagliflozin in Black Versus White Patients with Heart Failure:**

**Analysis of EMPEROR-Pooled**

Subodh Verma MD, PhD<sup>1</sup>, Nitish K. Dhingra BHSc<sup>1</sup>, Javed Butler MD, MPH, MBA,<sup>2,3</sup> Stefan D. Anker MD,<sup>4</sup> Joao Pedro Ferreira MD, PhD<sup>5,6</sup>, Gerasimos Filippatos MD,<sup>7</sup> James L. Januzzi MD,<sup>8</sup> Carolyn S.P. Lam MBBS, PhD,<sup>9</sup> Naveed Sattar MD,<sup>10</sup> Egon Pfarr MS,<sup>11</sup> Matias Nordaby MD<sup>12</sup>, Martina Brueckmann MD<sup>12,13</sup> Stuart J. Pocock PhD<sup>14</sup>, Faiez Zannad MD, PhD<sup>5</sup>, and Milton Packer MD<sup>15,16</sup> for the EMPEROR-Pooled Trial Committees and Investigators

<sup>1</sup>Division of Cardiac Surgery, St. Michael's Hospital, University of Toronto, Toronto, Canada; <sup>2</sup>Baylor Scott and White Research Institute, Dallas, TX, USA <sup>3</sup>Department of Medicine, University of Mississippi School of Medicine, Jackson, MS, USA; <sup>4</sup>Department of Cardiology (CVK), and Berlin Institute of Health Center for Regenerative Therapies, German Centre for Cardiovascular Research Partner Site Berlin, Charité Universitätsmedizin, Berlin, Germany; <sup>5</sup>Université de Lorraine, Inserm, Centre d'Investigations Cliniques, - Plurithématique 14-33, and Inserm U1116, CHRU, F-CRIN INI-CRCT (Cardiovascular and Renal Clinical Trialists), Nancy, France ; <sup>6</sup>Cardiovascular Research and Development Center, Department of Surgery and Physiology, Faculty of Medicine of the University of Porto, Porto, Portugal; <sup>7</sup>National and Kapodistrian University of Athens School of Medicine, Athens University Hospital Attikon, Athens, Greece; <sup>8</sup>Division of Cardiology, Harvard Medical School and Massachusetts General Hospital, Boston MA; <sup>9</sup>National Heart Centre Singapore, Duke-NUS Medical School, Singapore; <sup>10</sup>Institute of Cardiovascular and Medical Sciences, University of Glasgow, Scotland, UK; <sup>11</sup>Boehringer Ingelheim Pharma GmbH & Co. KG, Ingelheim, Germany; <sup>12</sup>Boehringer Ingelheim International GmbH, Ingelheim, Germany; <sup>13</sup>First Department of Medicine, Faculty of Medicine Mannheim, University of Heidelberg, Mannheim, Germany <sup>14</sup>Department of Medical Statistics, London School of Hygiene and Tropical Medicine, London, UK; <sup>15</sup>Baylor Heart and Vascular Institute, Baylor University Medical Center, Dallas TX USA, <sup>16</sup>Imperial College, London UK

Corresponding Author: Subodh Verma MD PhD FRCSC, Professor and Cardiac Surgeon, St. Michael's Hospital, University of Toronto, 30 Bond Street, Toronto, Ontario, M5B 1W8, Canada.

TEL 416 864 5997 ; FAX 416 864 5881 [Subodh.Verma@unityhealth.to](mailto:Subodh.Verma@unityhealth.to)

[Running Title: EMPEROR-Pooled Black vs. White Analysis](#)

1           There are disparities in both rates and outcomes of heart failure (HF) between Black and  
2   White patients, and there remain important questions about the generalizability of conventional  
3   HF therapies, including ACE inhibitors and beta-blockers, to Black patients. While analyses from  
4   DAPA-HF and EMPEROR-Reduced have demonstrated a consistent benefit of SGLT2 inhibitors  
5   in Black patients, these data were limited to heart failure with a reduced ejection fraction (HFrEF)  
6   and included a small number of Black patients<sup>1,2</sup>. Herein, we studied the safety and efficacy of  
7   empagliflozin according to Black vs. White race in the Americas across the spectrum of EF in the  
8   pooled dataset from both EMPEROR trials (N=9718).

9           478 Black patients and 3024 White patients were included. Black patients were more likely  
10   to be female (45.0% vs. 36.8%) and younger ( $64.4 \pm 11.7$  vs.  $69.0 \pm 10.8$  years). Compared to White  
11   patients, Black patients had a lower ejection fraction ( $39.0 \pm 15.9$  vs.  $42.9 \pm 15.8$ ), higher rates of  
12   non-ischemic HF etiologies (69.7% vs. 58.9%), higher eGFR ( $68.0 \pm 25.4$  vs.  $60.4 \pm 20.9$   
13   ml/min/1.73m<sup>2</sup>), lower rates of atrial fibrillation (25.1% vs. 37.6%), and similar rates of diabetes  
14   mellitus. Baseline NYHA class and NT proBNP levels [median 1338 vs. 1320 pg/mL] were  
15   comparable, although Kansas City Cardiomyopathy Questionnaire (KCCQ) clinical ( $64.12 \pm$   
16    $24.07$  vs.  $67.14 \pm 22.55$ ) and overall ( $61.93 \pm 24.04$  vs.  $64.78 \pm 22.87$ ) summary scores were  
17   lower amongst Black patients at baseline. Black and White patients had similar durations of HF  
18   ( $5.7 \pm 6.5$  years vs.  $5.4 \pm 6.0$  years) as well as rates of HHF in the preceding 12 months (22.6%  
19   vs. 22.2%). Rates of concomitant hydralazine and nitrate use were higher in Black patients (8.4%  
20   vs. 2.8%), as were rates of loop/high ceiling diuretics (76.8% vs. 71.1%) and RAAS inhibitors  
21   (ACE/ARB/ARNI) (87.9% vs. 84.2%). Rates of beta blocker (93.1% vs. 90.3%) and MRA (53.1%  
22   vs. 51.3%) were comparable. A higher percentage of Black patients had an implantable  
23   cardioverter-defibrillator (14.4% vs. 9.4%).

Black patients randomized to placebo had higher risk of the primary outcome [HR 1.49 (95% CI 1.14 – 1.94), P=0.004] (Figure 1) as well as time to first HHF [1.55 (1.14-2.10), P=0.005], time to first event of the extended composite outcome of CV death, HHF equivalent event, or diuretic intensification [1.40 (1.13-1.74), P=0.002], and total HHF [1.44 (1.01-2.06), P=0.046] compared with White patients.

In the pooled analysis, there was a concordant efficacy of empagliflozin on the primary outcome in Black versus White patients [0.56 (0.38 – 0.81) vs. 0.80 (0.68 – 0.95),  $P_{\text{interaction}}=0.083$ ] (Figure 1). In the HFrEF population specifically, this difference reached statistical significance [0.44 (0.27 – 0.73) vs. 0.84 (0.66-1.06),  $P_{\text{interaction}}=0.022$ ]. This trend was driven by a larger treatment benefit amongst Black patients on time to first HHF in EMPEROR-Pooled [0.44 (0.28 – 0.70) vs. 0.73 (0.60-0.90),  $P_{\text{interaction}} = 0.052$ ], an effect modification which was again particularly noted in the HFrEF population [0.35 (0.20 – 0.63) vs. 0.79 (0.60 – 1.05),  $P_{\text{interaction}} = 0.014$ ], but not in the HFpEF population. This also extended to total HHF, specifically with HFrEF [Black: 0.36 (0.18-0.75) vs. White: 0.87 (0.63-1.20),  $P_{\text{interaction}}=0.030$ ]. Black patients with HFrEF (but not HFpEF) had an amplified benefit of empagliflozin on the extended composite outcome [0.49 (0.32-0.74) vs. 0.86 (0.71-1.05),  $P_{\text{interaction}}=0.015$ ], as well as on KCCQ clinical summary scores at 52 weeks [vs. placebo: 6.71 (1.47-11.96) vs. 0.77 (-1.57-3.12),  $P_{\text{interaction}} = 0.043$ ] compared with White patients.

A sensitivity analysis was conducted with covariates limited to only treatment and race. The results were comparable for the primary outcome [Black: 0.54 (0.37-0.79) vs. White: 0.80 (0.68-0.94),  $P_{\text{interaction}} = 0.063$ ], time to first HHF [0.42 (0.27-0.67) vs. 0.72 (0.59-0.89),  $P_{\text{interaction}} =$

0.037], total HHF [0.50 (0.29-0.88) vs. 0.86 (0.68-1.10),  $P_{\text{interaction}} = 0.084$ ], and time to CV death [0.75 (0.42-1.32) vs. 1.03 (0.81-1.30),  $P_{\text{interaction}} = 0.305$ ].

Adverse events (AEs) and serious AEs were comparable for empagliflozin vs. placebo in Black and White patients [AEs: (Black: Placebo – 88.3%, Empagliflozin – 85.4%; White: Placebo – 83.6%, Empagliflozin – 82.9%); serious AEs: Black: Placebo – 61.5%, Empagliflozin – 53.1%; White: Placebo – 51.2%, Empagliflozin 48.2%)], however, the placebo incidence of adverse events was higher in Black patients. Empagliflozin’s safety profile with respect to-rates of hypotension, symptomatic hypotension, volume depletion, genital infections, acute kidney injury, and hypoglycemia was also comparable between populations.

In summary, Black vs. White patients were at higher risk of HF events in EMPEROR Pooled. However, the efficacy and safety profile of empagliflozin is similar in Black and White patients with HF when assessed irrespective of EF, with a suggestion of potential enhanced efficacy in Black versus White patients particularly with HFrEF. Black patients may be predisposed to greater fluid retention and hence may derive more benefit from empagliflozin’s decongestive properties.<sup>3,4</sup> Our findings are limited by the relatively small number of Black patients and could be confounded by differences in baseline characteristics; hence this finding remains hypothesis generating. Efforts to recruit more Black patients in future trials are needed <sup>5</sup>.

## Acknowledgements

The author(s) meet criteria for authorship as recommended by the International Committee of Medical Journal Editors (ICMJE) and were fully responsible for all content and editorial decisions, and were involved at all stages of publication development.

## 1    **Funding**

2    The EMPEROR studies were sponsored by the Boehringer Ingelheim and Eli Lilly and Company  
3    Diabetes Alliance.

4

## 5    **Data sharing**

6    To ensure independent interpretation of clinical study results and enable authors to fulfill their role  
7    and obligations under the ICMJE criteria, Boehringer Ingelheim grants all external authors access  
8    to clinical study data pertinent to the development of the publication. In adherence with the  
9    Boehringer Ingelheim Policy on Transparency and Publication of Clinical Study Data, scientific  
10    and medical researchers can request access to clinical study data when it becomes available on  
11    Vivli - Center for Global Clinical Research Data, and earliest after publication of the primary  
12    manuscript in a peer-reviewed journal, regulatory activities are complete, and other criteria are  
13    met. Please visit Medical & Clinical Trials | Clinical Research | MyStudyWindow for further  
14    information.

## 15    **Author COI disclosures**

16    S.V. holds a tier 1 Canada Research Chair in cardiovascular surgery; and reports receiving  
17    research grants and honoraria from Amarin, Amgen, AstraZeneca, Bayer, Boehringer Ingelheim,  
18    Bristol-Myers Squibb, Eli Lilly, HLS Therapeutics, Janssen, Novartis, Novo Nordisk, PhaseBio,  
19    and Pfizer; and receiving honoraria from Sanofi, Sun Pharmaceuticals, and the Toronto  
20    Knowledge Translation Working Group. He is a member of the scientific excellence committee  
21    of the EMPEROR-Reduced trial and served as a national lead investigator of the DAPA-HF and  
22    EMPEROR-Reduced trials. He is the President of the Canadian Medical and Surgical

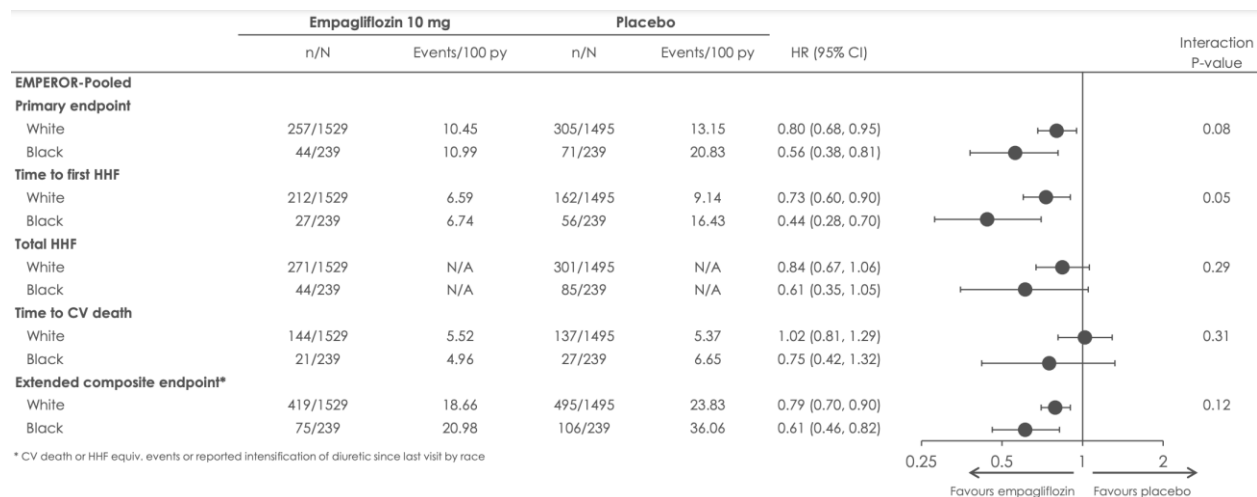
1 Knowledge Translation Research Group, a federally incorporated not-for-profit physician  
2 organisation. **N.K.D.** declares no competing interests. **J.B.** reports personal fees from Boehringer  
3 Ingelheim, during the conduct of the study; personal fees from Boehringer Ingelheim, Cardior,  
4 CVRx, Foundry, G3 Pharma, Imbria, Impulse Dynamics, Innolife, Janssen, LivaNova, Luitpold,  
5 Medtronic, Merck, Novartis, NovoNordisk, Relypsa, Roche, Sanofi, Sequana Medical, V-Wave  
6 and Vifor, outside the submitted work. **S.D.A.** reports grants and personal fees from Vifor Int.  
7 and Abbott Vascular, and personal fees from Astra-Zeneca, Bayer, Brahms, Boehringer  
8 Ingelheim, Cardiac Dimensions, Novartis, Occlutech, Servier, and Vifor Int. Personal fees from  
9 Boehringer Ingelheim during the conduct of the study. **J.P.F.** reports personal fees from  
10 Boehringer Ingelheim, during the conduct of the study; personal fees from Boehringer  
11 Ingelheim, outside the submitted work. **G.F.** reports personal fees from Boehringer Ingelheim,  
12 during the conduct of the study; personal fees from Medtronic, Vifor, Servier, Novartis, Bayer,  
13 Amgen and Boehringer Ingelheim, outside the submitted work. **J.L.J.** a Trustee of the American  
14 College of Cardiology, a Board member of Imbria Pharmaceuticals, has received grant support  
15 from Applied Therapeutics, Innolife, Novartis Pharmaceuticals and Abbott Diagnostics,  
16 consulting income from Abbott, Janssen, Novartis, and Roche Diagnostics, and participates in  
17 clinical endpoint committees/data safety monitoring boards for Abbott, AbbVie, Amgen, Bayer,  
18 CVRx, Janssen, MyoKardia and Takeda. **C.S.P.L.** served on the Scientific Excellence  
19 Committee of the EMPEROR Program; has received research support from AstraZeneca, Bayer,  
20 Boston Scientific and Roche Diagnostics; has served as consultant or on the Advisory Board/  
21 Steering Committee/ Executive Committee for Actelion, Amgen, Applied Therapeutics,  
22 AstraZeneca, Bayer, Boehringer Ingelheim, Boston Scientific, Cytokinetics, Darma Inc., Us2.ai,  
23 Janssen Research & Development LLC, Medscape, Merck, Novartis, Novo Nordisk, Radcliffe

1 Group Ltd., Roche Diagnostics, Sanofi and WebMD Global LLC; and serves as co-founder &  
2 non-executive director of Us2.ai. **N.S.** has consulted for Amgen, Astrazeneca, Boehringer  
3 Ingelheim, Eli-Lilly, Hanmi Pharmaceuticals, Novo Nordisk, Novartis, Novartis, Sanofi and  
4 Pfizer and received grant support from Boehringer Ingelheim. **E.P.**, **M.N.** and **M.B.** are  
5 employees of Boehringer Ingelheim. **S.J.P.** reports personal fees from Boehringer Ingelheim,  
6 during the conduct of the study; personal fees from Boehringer Ingelheim, outside the submitted  
7 work. **F.Z.** reports personal fees from Boehringer Ingelheim, during the conduct of the study;  
8 personal fees from Janssen, Novartis, Boston Scientific, Amgen, CVRx, AstraZeneca, Vifor  
9 Fresenius, Cardior, Cereno Pharmaceutical, Applied Therapeutics, Merck, Bayer and,  
10 Cellprothera, other from CVCT, and Cardiorenal, outside the submitted work.

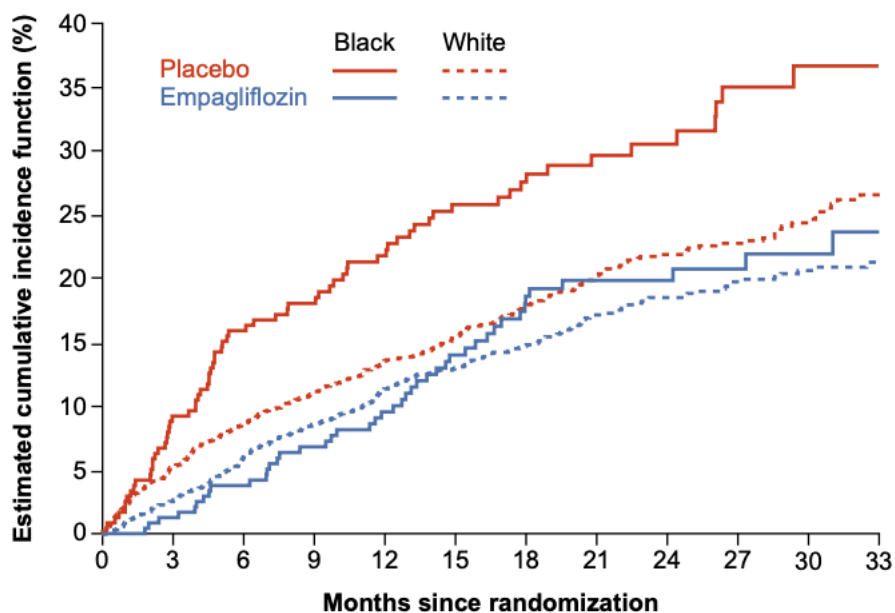
11  
12  
13  
14  
15  
16  
17  
18  
19  
20  
21  
22  
23  
24  
25  
26  
27  
28  
29  
30  
31  
32  
33  
34  
35



**Figure 1.** Summary of major findings of White and Black patients in the Americas including (A) endpoint data in EMPEROR-Pooled according to White versus Black race and (B) cumulative incidence of the primary endpoint in both the placebo and empagliflozin groups by Black versus White race. A total of 9718 HF patients were included in EMPEROR-Pooled, a prospectively designed combined analysis of EMPEROR-Reduced and -Preserved . Patients were randomized to 10mg empagliflozin or placebo in addition to existing background therapy. The primary outcome of the trials was time to first HF hospitalization (HHF) or cardiovascular (CV) death. The eGFR values presented are derived from the conventional CKD-EPI equation, which utilizes serum creatinine and corrects for age, sex, and race. Given that 92.8% (478/515) of Black patients were recruited from the Americas, we report results of EMPEROR-Pooled by Black vs. White patients specifically within the Americas. Institutional review board approval was obtained by each trial centre and informed consent was received from every participant. Baseline characteristics were compared between Black and White patients using t-tests for continuous variables and chi-square tests for categorical variables. Time-to-first event analyses were performed with a Cox proportional-hazards model, adjusted for age, sex, region (North America, Latin America), diabetes status (diabetes, prediabetes, no diabetes), eGFR at baseline, left ventricular ejection fraction at baseline, and study. These analyses were performed according to the intention-to-treat principle for all randomized patients, and included data up to the end of the planned treatment period. Event rates per 100 patient years and adjusted hazard ratios (HR) are reported. Total (first and recurrent) hospitalizations for HF were evaluated accordingly with a joint frailty model that accounted for cardiovascular death, adjusted for the same covariates as the Cox model. Continuous endpoints were analyzed with the same covariates in a mixed model with repeated measures (MMRM). To assess the consistency of the treatment effects across Black and White subgroups, subgroup-by-treatment interaction terms were added to the models. Adverse events were analyzed descriptively based on patients with events occurring during the on-treatment period (including 7 days after last drug consumption by the patient).



**Pooled Race CI curve**



**Patients at risk**

<b>Black</b>												
Placebo	239	216	199	178	158	131	111	85	63	49	34	26
Empagliflozin	239	235	225	206	186	159	131	110	85	63	44	38
<b>White</b>												
Placebo	1495	1407	1343	1214	1094	959	751	600	461	344	237	143
Empagliflozin	1529	1480	1414	1284	1144	1001	804	633	494	386	276	165

## References

1. Docherty KF, Ogunniyi MO, Anand IS, Desai AS, Diez M, Howlett JG, Nicolau JC, O'Meara E, Verma S, Inzucchi SE, et al. Efficacy of Dapagliflozin in Black Versus White Patients With Heart Failure and Reduced Ejection Fraction. *JACC Heart Fail.* 2022;10:52-64. doi: 10.1016/j.jchf.2021.08.006
2. Lam CSP, Ferreira JP, Pfarr E, Sim D, Tsutsui H, Anker SD, Butler J, Filippatos G, Pocock SJ, Sattar N, et al. Regional and ethnic influences on the response to empagliflozin in patients with heart failure and a reduced ejection fraction: the EMPEROR-Reduced trial. *Eur Heart J.* 2021;42:4442-4451. doi: 10.1093/eurheartj/ehab360
3. Morris AA, Testani JM, Butler J. Sodium-Glucose Cotransporter-2 Inhibitors in Heart Failure: Racial Differences and a Potential for Reducing Disparities. *Circulation.* 2021;143:2329-2331. doi: 10.1161/CIRCULATIONAHA.120.052821
4. Vallon V, Verma S. Effects of SGLT2 Inhibitors on Kidney and Cardiovascular Function. *Annu Rev Physiol.* 2021;83:503-528. doi: 10.1146/annurev-physiol-031620-095920
5. Yancy CW. The Journey Toward Health Equity: Are We Nearing an Abyss or Ascending a Peak? *Circulation.* 2021;143:2327-2328. doi: 10.1161/CIRCULATIONAHA.121.055157