



**HAL**  
open science

## Safety and Efficacy of Empagliflozin and Diuretic Use in Patients with Heart Failure and Preserved Ejection Fraction

Javed Butler, Muhammad Shariq Usman, Gerasimos Filippatos, João Pedro Ferreira, Michael Böhm, Martina Brueckmann, James L Januzzi, Sanjay Kaul, Ileana L Piña, Piotr Ponikowski, et al.

### ► To cite this version:

Javed Butler, Muhammad Shariq Usman, Gerasimos Filippatos, João Pedro Ferreira, Michael Böhm, et al.. Safety and Efficacy of Empagliflozin and Diuretic Use in Patients with Heart Failure and Preserved Ejection Fraction. *JAMA Cardiology*, 2023, 8 (7), pp.640-649. 10.1001/jamacardio.2023.1090 . hal-04105856

**HAL Id: hal-04105856**

**<https://hal.univ-lorraine.fr/hal-04105856>**

Submitted on 25 May 2023

**HAL** is a multi-disciplinary open access archive for the deposit and dissemination of scientific research documents, whether they are published or not. The documents may come from teaching and research institutions in France or abroad, or from public or private research centers.

L'archive ouverte pluridisciplinaire **HAL**, est destinée au dépôt et à la diffusion de documents scientifiques de niveau recherche, publiés ou non, émanant des établissements d'enseignement et de recherche français ou étrangers, des laboratoires publics ou privés.

# Safety and Efficacy of Empagliflozin and Diuretic Use in Patients with Heart Failure and Preserved Ejection Fraction

## A Post Hoc Analysis of the EMPEROR-Preserved Trial

Javed Butler, MD, MPH, MBA; Muhammad Shariq Usman, MD; Gerasimos Filippatos, MD, PhD; João Pedro Ferreira, MD, PhD; Michael Böhm, MD; Martina Brueckmann, MD; James L. Januzzi, MD; Sanjay Kaul, MD; Ileana L. Piña, MD, MPH; Piotr Ponikowski, MD, PhD; Michele Senni, MD; Mikhail Sumin, MD, PhD; Subodh Verma, MD, PhD; Liliana Zaremba-Pechmann, PhD; Stuart J. Pocock, PhD; Milton Packer, MD; Stefan Anker, MD, PhD

 [Invited Commentary](#)

 [Supplemental content](#)

**IMPORTANCE** The diuretic effect of sodium-glucose cotransporter 2 inhibitors may result in interaction with background diuretic therapy in patients with heart failure and preserved ejection fraction (HFpEF).

**OBJECTIVE** To assess the safety and efficacy of empagliflozin in combination with background diuretic therapy and the association of empagliflozin with the need for conventional diuretics.

**DESIGN, SETTING, AND PARTICIPANTS** This was a post hoc analysis of the Empagliflozin Outcome Trial in Patients with Chronic Heart Failure with Preserved Ejection Fraction (EMPEROR-Preserved). EMPEROR-Preserved was a phase 3, randomized, placebo-controlled, double-blind clinical trial conducted from March 2017 to April 2021. Patients with class II to IV heart failure and left ventricular ejection fraction greater than 40% were included. Of 5988 patients enrolled, 5815 (97.1%) had baseline data on diuretic use and were included in this analysis, which was conducted from November 2021 to August 2022.

**INTERVENTIONS** Participants in EMPEROR-Preserved were randomized to empagliflozin or placebo. In this analysis, participants were divided into 4 subgroups: no diuretics and furosemide-equivalent diuretic dose of less than 40 mg, 40 mg, and greater than 40 mg at baseline.

**MAIN OUTCOMES AND MEASURES** The main outcomes of interest were first hospitalization for heart failure (HHF) or cardiovascular death (CV death) and its components. Association of empagliflozin vs placebo with outcomes by baseline diuretic status (no diuretic vs any dose) and dose (no diuretic, <40 mg, 40 mg, and > 40mg) was assessed. Association of empagliflozin use with changes in diuretic therapy was also studied.

**RESULTS** Among 5815 patients (mean [SD] age, 71.9 [9.4] years; 2594 [44.6%] female) with known baseline diuretic use, 1179 (20.3%) were not taking diuretics, 1725 (29.7%) were taking less than 40 mg, 1772 (30.5%) were taking 40 mg, and 1139 (19.6%) were taking greater than 40 mg. In the placebo arm, patients with higher diuretic doses had worse outcomes. Empagliflozin decreased the risk of HHF or CV death, regardless of background diuretic status (hazard ratio [HR], 0.81; 95% CI, 0.70-0.93] for the diuretic group vs HR, 0.72; 95% CI, 0.48-1.06 for the nondiuretic group; *P* for interaction = .58). Similarly, diuretic status was not associated with changes in improvements in first HHF, total HHF, rate of decline in estimated glomerular filtration rate, and Kansas City Cardiomyopathy Questionnaire 23 clinical summary score with empagliflozin. Findings were consistent when patients were categorized by diuretic dose. Empagliflozin was associated with a decreased likelihood of diuretic dose escalation (HR, 0.74; 95% CI, 0.65-0.84) and an increased likelihood of de-escalation (HR, 1.15; 95% CI, 1.02-1.30). Empagliflozin was associated with an increased risk of volume depletion in patients taking diuretics (HR, 1.34; 95% CI, 1.13-1.59).

**CONCLUSION** In this study, treatment with empagliflozin was similar regardless of diuretic use or dose. Empagliflozin use was associated with decreased conventional diuretic dosing.

**TRIAL REGISTRATION** ClinicalTrials.gov Identifier: [NCT03057951](https://clinicaltrials.gov/ct2/show/study/NCT03057951)

*JAMA Cardiol.* doi:10.1001/jamacardio.2023.1090  
Published online May 24, 2023.

**Author Affiliations:** Author affiliations are listed at the end of this article.

**Corresponding Author:** Javed Butler, MD, MPH, MBA, Baylor Scott and White Research Institute, 3434 Live Oak St, Dallas, TX 75204 ([butlizh@gmail.com](mailto:butlizh@gmail.com)).

The Empagliflozin Outcome Trial in Patients with Chronic Heart Failure with Preserved Ejection Fraction (EMPEROR-Preserved) evaluated the efficacy of empagliflozin, a sodium-glucose cotransporter 2 (SGLT2) inhibitor, for the treatment of heart failure with preserved ejection fraction (HFpEF).<sup>1</sup> Compared with placebo, empagliflozin was found to significantly reduce the risk of first hospitalization for heart failure (HHF) or cardiovascular (CV) death, slow the decline in estimated glomerular filtration rate (eGFR), and improve health-related quality of life (HRQoL).

SGLT2 inhibitors prevent the absorption of sodium and glucose in the proximal renal tubule, resulting in natriuresis, glucosuria, and increased urine output.<sup>2</sup> In addition, several other mechanisms likely mediate the benefit from SGLT2 inhibitors, including increased autophagy, reduced inflammation, improvement of energy metabolism, and prevention of adverse cardiac remodeling.<sup>3,4</sup> It has been suggested that SGLT2 inhibitors primarily act through a diuretic mechanism and that their benefit may be attenuated in patients already taking other diuretics.<sup>5</sup> It is also possible that combined use of SGLT2 inhibitors with conventional diuretics may increase the risk of volume depletion events, acute kidney injury, and other adverse effects. Use of SGLT2 inhibitors may also impact the need for conventional diuretic therapy.

The aim of this post hoc analysis was to assess the safety and efficacy of empagliflozin in relation to background diuretic therapy. An additional objective was to study the association of empagliflozin with the use of conventional diuretics over time.

## Methods

### Study Design and Eligibility Criteria

The design and primary results of the EMPEROR-Preserved trial have been previously published.<sup>1,6</sup> The trial protocol is in [Supplement 1](#). The ethics committee at each center approved the trial, and all patients provided written informed consent. EMPEROR-Preserved was a double-blind, randomized, placebo-controlled, event-driven trial conducted from March 2017 to April 2021, which aimed to assess the safety and efficacy of empagliflozin for the treatment of HFpEF. Individuals were eligible for inclusion in the trial if they had chronic heart failure (HF), New York Heart Association (NYHA) class II to IV, with left ventricular ejection fraction greater than 40%. Individuals had to meet the following 2 criteria: an N-terminal prohormone B-type natriuretic peptide (NT-proBNP) level greater than 300 pg/mL (greater than 900 pg/mL for patients with atrial fibrillation) and HHF in the past 6 months or left atrial or left ventricular structural changes on echocardiography. Race was collected via electronic case report form based on patient-reported information in order to monitor diversity in the trial and ensure the recruitment of a representative patient population. A total of 5988 patients were enrolled and randomized to receive either empagliflozin, 10 mg, or placebo. The median (IQR) follow-up time was 26.2 (18.1-33.1) months.

## Key Points

**Question** What are the safety and efficacy of empagliflozin in patients with heart failure and preserved ejection fraction (HFpEF) with background diuretic use?

**Findings** In this post hoc analysis of a randomized clinical trial, empagliflozin was associated with comparable improvements in time to cardiovascular death or heart failure hospitalization, first and total heart failure hospitalizations, rate of decline in estimated glomerular filtration rate, and health status, regardless of background diuretic use or dose. Empagliflozin was also associated with a reduced likelihood of diuretic initiation or dose escalation and an increased likelihood of diuretic de-escalation and discontinuation after randomization.

**Meaning** The findings suggest that treatment with empagliflozin in patients with HFpEF should be independent of diuretic therapy and may result in reduced need for diuretics.

### Baseline Diuretic Use

Of the 5988 original patients, 5815 (97.1%) had data on baseline diuretic use and were included in the present analysis. For the current study, torsemide, 20 mg; bumetanide, 1 mg; azosemide, 60 mg; and ethacrynic acid, 100 mg, were considered equivalent to furosemide, 40 mg intravenously or 80 mg orally (all doses refer to total daily prescribed). This classification is in line with a previous analysis from the Dapagliflozin and Prevention of Adverse Outcomes in Heart Failure (DAPA-HF) trial.<sup>7</sup> Patients were categorized into the following subgroups according to baseline diuretic therapy: no diuretic use and furosemide-equivalent doses of less than 40 mg, 40 mg, and greater than 40 mg. Patients treated with only a nonloop diuretic agent were included in the group of patients with less than 40 mg furosemide-equivalent doses. Mineralocorticoid receptor antagonists were not classified as diuretics for the current analysis.

### Outcomes

The following clinical outcomes were studied: the composite end point of first HHF or CV death, total (first and recurrent) HHF, first HHF, CV death, all-cause death, rate of decline in eGFR, and the composite kidney end point (chronic dialysis or kidney transplant or sustained reduction of 50% or greater in eGFR or sustained eGFR less than 15 mL/min/1.73 m<sup>2</sup> or renal death). Change in HRQoL was assessed using Kansas City Cardiomyopathy Questionnaire 23 (KCCQ-23), which was completed by patients at baseline and at 12, 32, and 52 weeks' follow-up, and includes the total symptom score, the clinical summary score, and the overall summary score. Changes in key physiologic outcomes, including glycosylated hemoglobin, hematocrit, NT-proBNP, weight, systolic blood pressure, and uric acid, were also studied. Adverse events of interest included adverse events leading to trial drug discontinuation (including fatal events), hyperkalemia, acute kidney failure, and volume depletion events. Volume depletion was a composite of various preferred terms, including hypotension, orthostatic hypotension, hypovolemic shock, circulatory collapse, syncope, presyncope, dehydration, and hypovolemia.

### Statistical Analysis

Baseline characteristics of patients in each subgroup (no diuretics, any dose, and furosemide-equivalent doses <40, 40, and >40 mg) were analyzed descriptively. Categorical variables were summarized as frequencies and percentages and compared across categories with the  $\chi^2$  test, while continuous variables were summarized as means and standard deviations and compared using the *t* test. To evaluate a trend across doses, an ordinal regression likelihood ratio test was used. Clinical outcomes and changes in diuretic therapy (initiation, increase in dose, de-escalation, and permanent discontinuation) were analyzed in a time-to-first-event fashion. Time-to-first-event outcomes were analyzed using a multivariable Cox regression model to obtain hazard ratios (HRs) and 95% CIs. Total HHF was analyzed using a joint frailty model together with cardiovascular death to obtain HRs and 95% CIs. In both cases, the multivariable models adjusted for the following baseline characteristics: left ventricular ejection fraction, age, and eGFR (as continuous covariates) as well as sex, diabetes status, and region. The variables used in the regression model were the same as those used in the prespecified model for the primary analysis of the EMPEROR-Preserved trial.

The eGFR slope was analyzed based on receiving-treatment data, using a random coefficient model allowing intercept and slope to vary randomly between patients. The analysis model included age, left ventricular ejection fraction, and baseline eGFR as linear covariates and sex, region, diabetes status, baseline-by-time interaction, and treatment-by-time interaction as fixed covariates. Changes in KCCQ summary scores and physiologic outcomes were also analyzed using a mixed model with repeated measures. The analysis model included age, eGFR, and left ventricular ejection fraction as linear covariates, and sex, region, diabetes, sex, interaction of visit by treatment by baseline dose of diuretics, and interaction of baseline value by visit as fixed effects.

Outcomes were studied in the placebo group alone to characterize the natural history of patients by baseline diuretic dose. For this analysis, the group receiving no diuretics at baseline was treated as a reference against which outcomes in other subgroups were compared. Next, the treatment effect of empagliflozin (vs placebo) by baseline diuretic therapy was assessed for each outcome. Two comparisons were done: according to baseline diuretic status (no diuretics vs any dose) and according to baseline dose of diuretics (none, <40 mg, 40 mg and >40 mg). HRs and mean differences across subgroups were compared by adding subgroup-by-treatment interaction terms to the models. Data were analyzed from November 2021 to August 2022.

## Results

### Baseline Characteristics

Of 5815 patients (mean [SD] age, 71.9 [9.4] years; 2594 [44.6%] female; 1817 Asian (14.0%); 253 Black (4.4%); 4381 White (75.3%); and 362 other or mixed race (6.2%), includ-

ing American Indian or Alaska Native, Native Hawaiian or Pacific Islander, and self-reported mixed race, consolidated due to very low prevalence in the trial population]), 1179 (20.3%) were not taking diuretics, 1725 (29.7%) were taking less than 40 mg, 1772 (30.5%) were taking 40 mg, and 1139 (19.6%) were taking greater than 40 mg furosemide-equivalent doses. Patient characteristics in the empagliflozin and placebo arms were generally balanced in the diuretic and the nondiuretic group (eTable 1 in Supplement 2). Patients taking diuretics were more likely to be older and female; less likely to be Asian; had a higher body mass index, heart rate, higher NYHA class, and NT-proBNP level; had a lower KCCQ clinical summary score, had a greater frequency of recent HHF; and had a higher burden of comorbidities, including atrial fibrillation, hypertension, chronic kidney disease, and diabetes. (Table).

### Outcomes and Adverse Events in the Placebo Arm

In the placebo arm, compared with the nondiuretic group (reference), the diuretic group had a higher risk of HHF or CV death (HR, 1.81; 95% CI, 1.38-2.39; *P* < .001), total HHF (HR, 3.21; 2.15-4.80; *P* < .001), first HHF (HR, 2.75; 95% CI, 1.85-4.07; *P* < .001), and all-cause mortality (HR, 1.40; 95% CI, 1.06-1.85; *P* = .02). Findings were similar after stratification by diuretic dose, with higher diuretic doses associated with a stepwise increase in the risk of all aforementioned clinical outcomes (eFigure 1 in the Supplement). In the placebo arm, neither baseline diuretic use status nor dose was associated with the risk of the composite kidney end point (eFigure 1 in the Supplement) or eGFR slope. Patients taking higher doses of diuretics in the placebo arm experienced greater increases in NT-proBNP and greater reductions in body weight at 52 weeks. Neither diuretic status nor dose was associated with the magnitude of change in any of the other physiologic outcomes studied (eTable 2 in Supplement 2).

In the placebo arm, diuretic use was associated with a lesser improvement in KCCQ clinical summary score at all time points (12, 32, and 52 weeks). When analyzed by dose, a stepwise decrease in the magnitude of KCCQ clinical summary score improvement was seen with increasing diuretic dose. The findings were similar for KCCQ total symptom score and KCCQ overall summary score (eFigure 2 in Supplement 2).

Patients in the placebo arm who were receiving a diuretic had a numerically higher risk of adverse events leading to placebo discontinuation (10.5 vs 7.9 events per 100 patient-years), volume depletion events (5.6 vs 4.1 events per 100 patient-years), and acute kidney failure (7.9 vs 4.9 events per 100 patient-years). Findings were similar when studied by diuretic dose. The risk of hyperkalemia did not vary considerably by diuretic status (4.1 vs 4.1 events per 100 patient-years) or dose.

### Association of Empagliflozin With Clinical Outcomes by Baseline Diuretic Therapy

Baseline diuretic status was not associated with changes in the benefit of empagliflozin for the primary end point (HR, 0.81; 95% CI, 0.70-0.93 for the diuretic group; HR, 0.72;

**Table. Baseline Characteristics of Patients in the EMPEROR-Preserved Trial According to Baseline Diuretic Therapy**

	Furosemide-equivalent dose					P value for interaction (no diuretic vs any dose) <sup>a</sup>	P value for trend (by dose) <sup>b</sup>
	No diuretic (n = 1179)	<40 mg (n = 1725)	40 mg (n = 1772)	>40 mg (n = 1139)	Any dose (n = 4636)		
<b>Characteristics of diuretic use</b>							
Furosemide-equivalent dose							
Median (IQR), mg	NA	20 (20-20)	40 (40-40)	80 (80-125)	40 (40-75)	NA	NA
Loop diuretics only, No. (%)	NA	882 (51.1)	1519 (85.7)	945 (83.0)	3346 (72.2)	NA	<.001
Nonloop diuretics only, No. (%)	NA	755 (43.8)	0	0	755 (16.3)	NA	<.001
Both loop and nonloop diuretics, No. (%)	NA	88 (5.1)	253 (14.3)	194 (17.0)	535 (11.5)	NA	<.001
Hydrochlorothiazide, No. (%)	NA	530 (30.7)	126 (7.1)	92 (8.1)	748 (16.1)	NA	.003
Chlorthalidone, No. (%)	NA	55 (3.2)	11 (0.6)	7 (0.6)	73 (1.6)	NA	.16
Indapamide, No. (%)	NA	205 (11.9)	64 (3.6)	22 (1.9)	291 (6.3)	NA	.02
<b>Demographic characteristics and vitals</b>							
Age, mean (SD), y	70.9 (9.4)	72.4 (8.9)	71.7 (9.6)	72.3 (10.0)	72.1 (9.4)	<.001	.02
Female, No. (%)	452 (38.3)	836 (48.5)	795 (44.9)	511 (44.9)	2142 (46.2)	<.001	.04
Male, No. (%)	727 (61.7)	889 (51.5)	977 (55.1)	628 (55.1)	2494 (53.8)		
Race, No. (%) <sup>c</sup>							
Asian	247 (20.9)	305 (17.7)	172 (9.7)	93 (8.2)	570 (12.3)	<.001	<.001
Black	31 (2.6)	58 (3.4)	97 (5.5)	67 (5.9)	222 (4.8)		
White	803 (68.1)	1290 (74.8)	1372 (77.4)	916 (80.4)	3578 (77.2)		
Other or mixed race <sup>d</sup>	98 (8.3)	71 (4.1)	130 (7.3)	63 (5.5)	264 (5.7)		
Region, No. (%)							
Asia	218 (18.5)	268 (15.5)	122 (6.9)	71 (6.2)	461 (9.9)	<.001	<.001
Europe	402 (34.1)	825 (47.8)	782 (44.1)	554 (48.6)	2161 (46.6)		
North America	115 (9.8)	179 (10.4)	183 (10.3)	211 (18.5)	573 (12.4)		
Latin America	383 (32.5)	389 (22.6)	562 (31.7)	175 (15.4)	1126 (24.3)		
Heart rate, mean (SD), bpm	69.1 (11.4)	70.0 (11.6)	71.1 (11.9)	71.0 (12.6)	70.7 (12.0)	<.001	<.001
Systolic blood pressure, mean (SD), mm Hg	132.4 (14.9)	132.6 (15.2)	131.6 (15.8)	130.5 (16.8)	131.7 (15.8)	.17	<.001
Diastolic blood pressure, mean (SD), mm Hg	76.8 (10.5)	76.2 (10.1)	76.0 (10.5)	73.5 (11.2)	75.4 (10.6)	<.001	<.001
Weight, mean (SD), kg	77.0 (17.7)	79.7 (18.5)	83.0 (19.1)	87.6 (21.3)	82.9 (19.7)	<.001	<.001
BMI, mean (SD) <sup>e</sup>	27.9 (5.2)	29.3 (5.6)	30.4 (5.8)	31.6 (6.3)	30.3 (5.9)	<.001	<.001
<b>Medical history, No. (%)</b>							
Atrial fibrillation	461 (39.1)	868 (50.3)	944 (53.3)	666 (58.5)	2478 (53.5)	<.001	<.001
Hypertension	1017 (86.3)	1585 (91.9)	1621 (91.5)	1043 (91.6)	4249 (91.7)	<.001	<.001
CAD	474 (40.2)	590 (34.2)	584 (33.0)	405 (35.6)	1579 (34.1)	<.001	.0121
CKD	484 (41.1)	844 (48.9)	1009 (56.9)	766 (67.3)	2619 (56.5)	<.001	<.001
BMI ≥30, No. (%) <sup>e</sup>	377 (32.0)	707 (41.0)	877 (49.5)	650 (57.1)	2234 (48.2)	<.001	<.001
Diabetes	487 (41.3)	807 (46.8)	888 (50.1)	684 (60.1)	2379 (51.3)	<.001	<.001
<b>Laboratory measurements</b>							
Estimated GFR, mL/min/1.73 m <sup>2</sup>	66.6 (18.7)	62.5 (18.2)	59.4 (20.2)	53.5 (20.5)	59.1 (19.9)	<.001	<.001
Estimated GFR <60 mL/min/1.73 m <sup>2</sup> , No. (%)	438 (37.2)	792 (45.9)	939 (53.0)	729 (64.0)	2460 (53.1)	<.001	<.001
Creatinine, mean (SD), mg/dL	1.09 (0.33)	1.11 (0.33)	1.21 (0.41)	1.34 (0.48)	1.21 (0.41)	<.001	<.001
Hematocrit, %	41.7 (4.7)	41.1 (4.5)	40.8 (4.8)	40.1 (5.0)	40.7 (4.8)	<.001	<.001
<b>Heart failure history</b>							
NYHA functional classification, No. (%)							

(continued)

95% CI, 0.48-1.06 for the nondiuretic group; P for interaction = .58), total HHF, or first HHF. No treatment by diuretic

status interaction was noted for CV death or all-cause death end points (Figure 1). The association of empagliflozin with

Table. Baseline Characteristics of Patients in the EMPEROR-Preserved Trial According to Baseline Diuretic Therapy (continued)

	Furosemide-equivalent dose					P value for interaction (no diuretic vs any dose) <sup>a</sup>	P value for trend (by dose) <sup>b</sup>
	No diuretic (n = 1179)	<40 mg (n = 1725)	40 mg (n = 1772)	>40 mg (n = 1139)	Any dose (n = 4636)		
II <sup>f</sup>	1061 (90.0)	1469 (85.2)	1430 (80.7)	803 (70.5)	3702 (79.9)		
III	115 (9.8)	252 (14.6)	338 (19.1)	326 (28.6)	916 (19.8)	<.001	<.001
IV	1 (0.1)	2 (0.1)	4 (0.2)	10 (0.9)	16 (0.3)		
Principal cause of heart failure, No. (%)							
Ischemic	506 (42.9)	572 (33.2)	616 (34.8)	364 (32.0)	1552 (33.5)	<.001	<.001
Nonischemic	672 (57.0)	1153 (66.8)	1156 (65.2)	775 (68.0)	3084 (66.5)		
NT-proBNP, mean (SD), pg/mL	1098.6 (1502.9)	1341.8 (1633.3)	1589.6 (2312.1)	1824.1 (2209.5)	1554.9 (2066.0)	<.001	<.001
KCCQ clinical summary score, mean (SD)	77.7 (18.9)	73.1 (19.9)	68.1 (21.1)	62.3 (22.2)	68.6 (21.3)	<.001	<.001
Left ventricular ejection fraction, mean (SD), %	54.3 (9.1)	55.0 (8.7)	53.3 (8.6)	54.8 (8.7)	54.3 (8.7)	.98	.22
Hospitalization for heart failure in past 12 mo, No. (%)	140 (11.9)	306 (17.7)	485 (27.4)	395 (34.7)	1186 (25.6)	<.001	<.001
Device therapy, No. (%)							
Implantable cardioverter defibrillator <sup>g</sup>	62 (5.3)	44 (2.6)	68 (3.8)	52 (4.6)	164 (3.5)	.006	.99
Cardiac resynchronization <sup>h</sup>	4 (0.3)	8 (0.5)	4 (0.2)	8 (0.7)	20 (0.4)	.66	.43
Other heart failure therapy, No. (%)							
ACEi/ARB/ARNi	927 (78.6)	1436 (83.2)	1474 (83.2)	851 (74.7)	3761 (81.1)	.05	.03
β-Blocker	1008 (85.5)	1454 (84.3)	1552 (87.6)	1004 (88.1)	4010 (86.5)	.37	.005
MRA	354 (30.0)	514 (29.8)	770 (43.5)	529 (46.4)	1813 (39.1)	<.001	<.001
ARNi	32 (2.7)	26 (1.5)	43 (2.4)	28 (2.5)	97 (2.1)	.20	.70
ACEi/ARB/ARNi, β-blocker, and MRA	268 (22.7)	383 (22.2)	567 (32.0)	350 (30.7)	1300 (28.0)	<.001	<.001
Glucose-lowering medication, No. (%) <sup>i</sup>							
Biguanide	294 (60.4)	440 (54.5)	486 (54.7)	318 (46.5)	1244 (52.3)	.001	<.001
Sulphonamide	102 (20.9)	171 (21.2)	193 (21.7)	141 (20.6)	505 (21.2)	.89	.94
DPP-4 inhibitor	67 (13.8)	128 (15.9)	96 (10.8)	90 (13.2)	314 (13.2)	.74	.13
GLP-1 receptor agonist	8 (1.6)	11 (1.4)	17 (1.9)	22 (3.2)	50 (2.1)	.51	.02
Insulin	113 (23.2)	186 (23.0)	268 (30.2)	275 (40.2)	729 (30.6)	.001	<.001

Abbreviations: ACEi, angiotensin-converting enzyme inhibitor; ARB, angiotensin receptor blocker; ARNi, angiotensin receptor-neprilysin inhibitor; BMI, body mass index; bpm, beats per min; CAD, coronary artery disease; CKD, chronic kidney disease; DPP-4, dipeptidyl peptidase-4; GFR, glomerular filtration rate; GLP-1, glucagonlike peptide-1; KCCQ, Kansas City Cardiomyopathy Questionnaire; MRA, mineralocorticoid receptor antagonists; NA, not applicable; NT-proBNP, N-terminal pro-brain natriuretic peptide; NYHA, New York Heart Association.

<sup>a</sup> P value for interaction for comparison between diuretic vs nondiuretic groups.

<sup>b</sup> P value for trend for comparison of no diuretic, <40 mg, 40 mg, and >40 mg.

<sup>c</sup> Race was collected via electronic case report form based on patient-reported information in order to monitor diversity in the trial and ensure the recruitment of a representative patient population.

<sup>d</sup> Other or mixed race included American Indian or Alaska Native, Native Hawaiian or Pacific Islander, and self-reported mixed race, which were consolidated to 1 category due to very low prevalence in the trial population.

<sup>e</sup> Calculated as weight in kilograms divided by height in meters squared.

<sup>f</sup> Includes 4 patients with NYHA I, 2 in the diuretics group and 2 in the no diuretics group.

<sup>g</sup> Includes all the patients with an implantable cardioverter-defibrillator regardless of the presence or absence of cardiac resynchronization therapy.

<sup>h</sup> Includes all the patients who were receiving cardiac resynchronization therapy regardless of the presence or absence of a defibrillator.

<sup>i</sup> Only includes patients with type 2 diabetes at baseline.

the kidney end point was not calculated due to a small number of events in the nondiuretic group. When participants were categorized by diuretic dose, the association with empagliflozin appeared consistent across dose categories for all aforementioned outcomes.

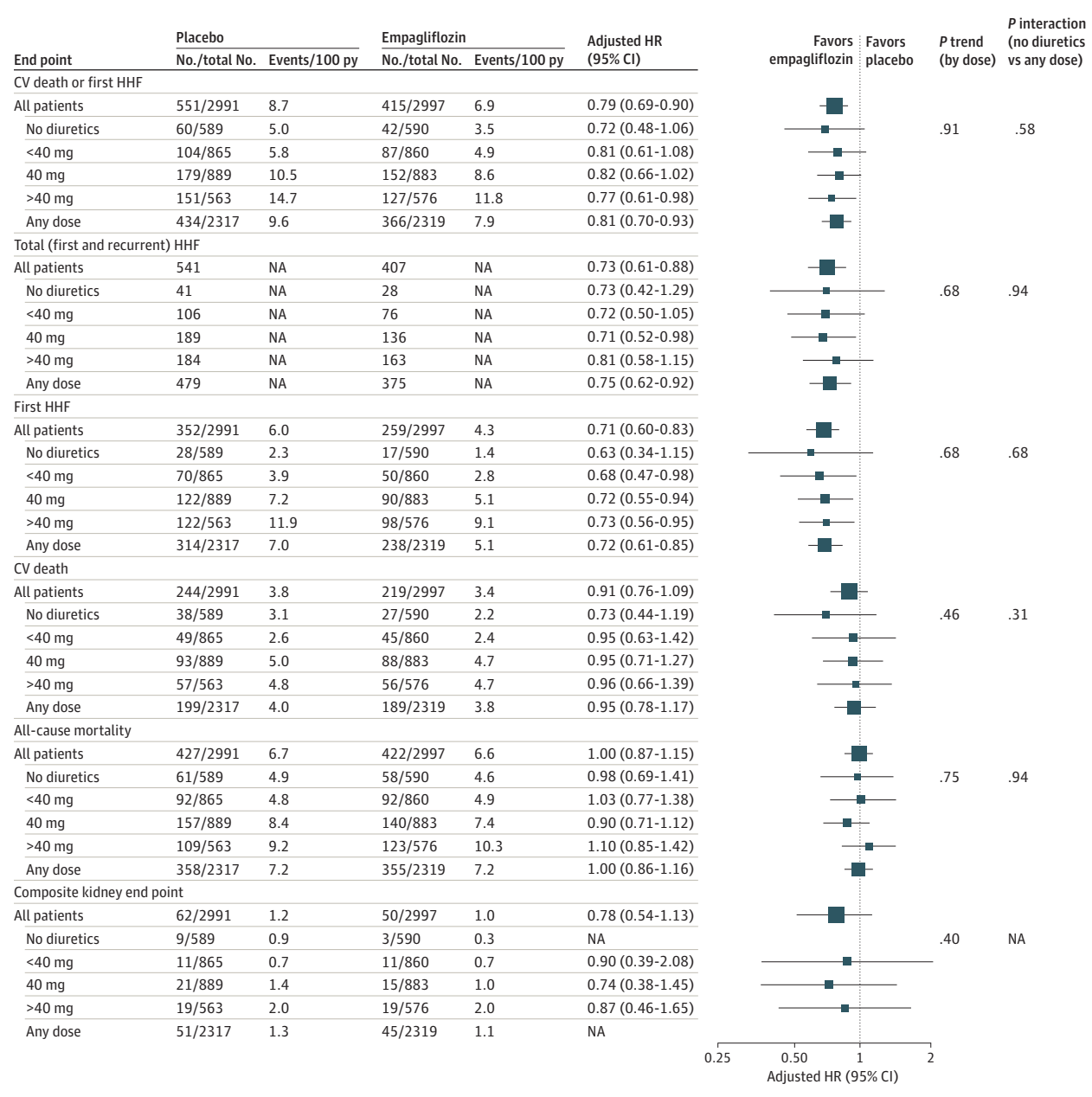
Compared with placebo, empagliflozin was associated with a slower rate of decline in the estimated glomerular filtration rate, regardless of baseline diuretic use or dose (eTable 3 in Supplement 2). Empagliflozin was also associated with improved KCCQ clinical summary scores similarly

in both the diuretic and nondiuretic groups at 12-week, 32-week, and 52-week follow-up. These findings were consistent when patients were categorized by diuretic dose. Findings were similar for KCCQ total symptom score and KCCQ overall summary score (Figure 2).

Compared with placebo, empagliflozin was associated with decreased NT-proBNP levels similarly in the diuretic and nondiuretic groups (geometric mean ratio [95% CI] at week 52: 0.95 [0.91-1.00] in the diuretic group; 0.91 [0.83-0.99] in the nondiuretic group; P for interaction = .40).



Figure 1. Comparison of Empagliflozin vs Placebo on Clinical Outcomes by Baseline Diuretic Use



CV indicates cardiovascular; HHF, hospitalization for heart failure; HR, hazard ratio; NA, not applicable; py, patient-year.

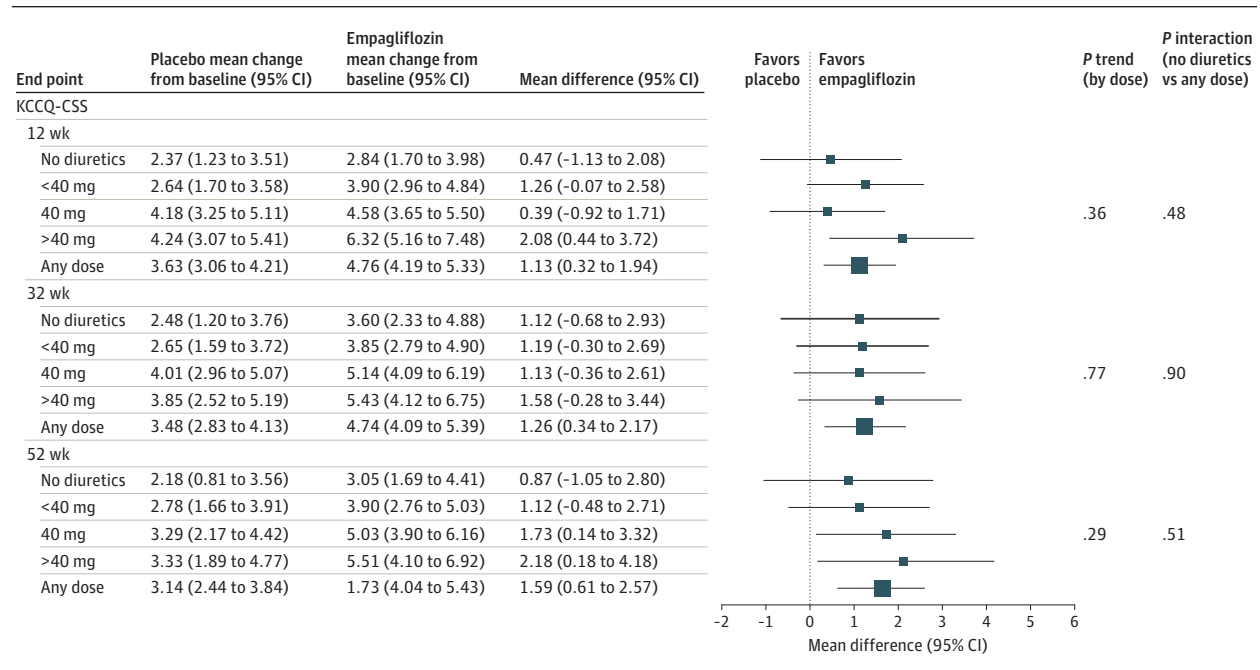
Findings were consistent when patients were categorized by diuretic dose (eTable 3 in Supplement 2).

Empagliflozin was associated with reduced weight and hemoglobin A<sub>1c</sub>, with no significant interaction by diuretic status. However, categorization by diuretic dose revealed that patients taking higher doses of diuretics were significantly less likely to experience weight loss or a decrease in hemoglobin A<sub>1c</sub> at week 52. Empagliflozin was associated with increased hematocrit and decreased systolic blood pressure and uric acid, with no effect modification by diuretic status or dose.

### Association of Empagliflozin With Adverse Effects by Baseline Diuretic Therapy

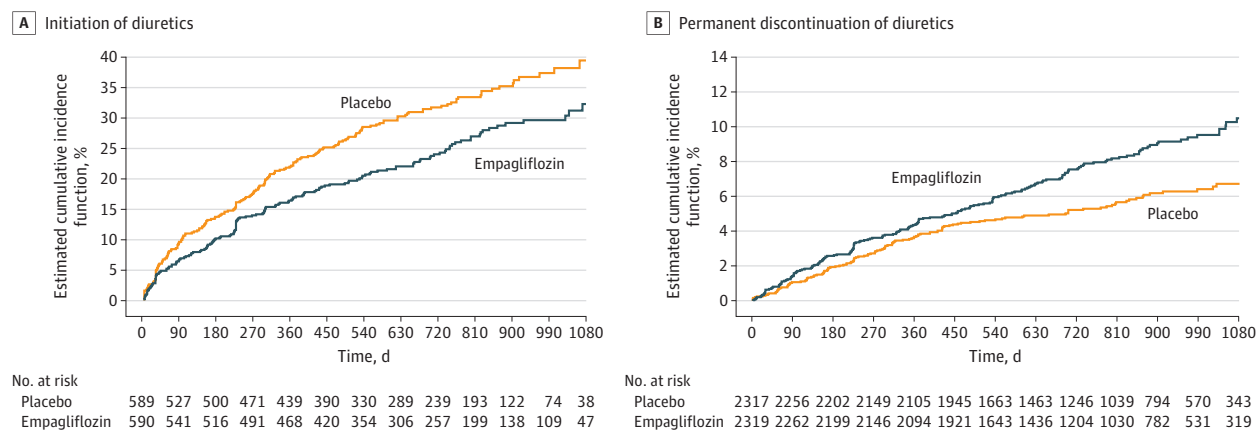
Empagliflozin was associated with a higher incidence of volume depletion events in the diuretic group (7.5 vs 5.6 events per 100 patient-years; HR, 1.34; 95% CI, 1.13-1.59) but not the nondiuretic group (4.3 vs 4.1 events per 100 patient-years; HR, 1.06; 95% CI, 0.70-1.61; *P* for interaction = .32) (eTable 4 in Supplement 2). Among the preferred terms grouped under volume depletion, the most commonly reported was hypotension, followed by syncope and dehydration (eTable 5 in Supplement 2). In both groups, the treatment arms did not differ in the frequency of acute kidney fail-

**Figure 2. Comparison of Empagliflozin vs Placebo on Kansas City Cardiomyopathy Questionnaire Subdomain Scores According to Baseline Diuretic Therapy**



KCCQ-CSS indicates Kansas City Cardiomyopathy Questionnaire clinical summary score.

**Figure 3. Cumulative Incidence Curves Showing Time to Initiation of Diuretics in Patients Not Receiving Diuretics at Baseline and Time to Permanent Discontinuation of Diuretics in Patients Receiving Diuretics at Baseline**



ure, hyperkalemia, or adverse events leading to trial drug discontinuation (including fatal events).

### Association of Empagliflozin With Changes in Diuretic Therapy After Randomization

Among patients who were not taking diuretics at baseline, empagliflozin was associated with a lesser likelihood of diuretic initiation (HR, 0.73; 95% CI, 0.59-0.90;  $P = .004$ ) compared to placebo (Figures 3 and 4). In those who were treated with diuretics at baseline, empagliflozin use was associated with a significantly greater probability of diuretic discontinuation (HR, 1.43; 95% CI, 1.15-1.78;  $P = .002$ ) (Figures 2 and 4), and de-escalation (HR, 1.15; 95% CI, 1.02-1.30;  $P = .02$ ) and a de-

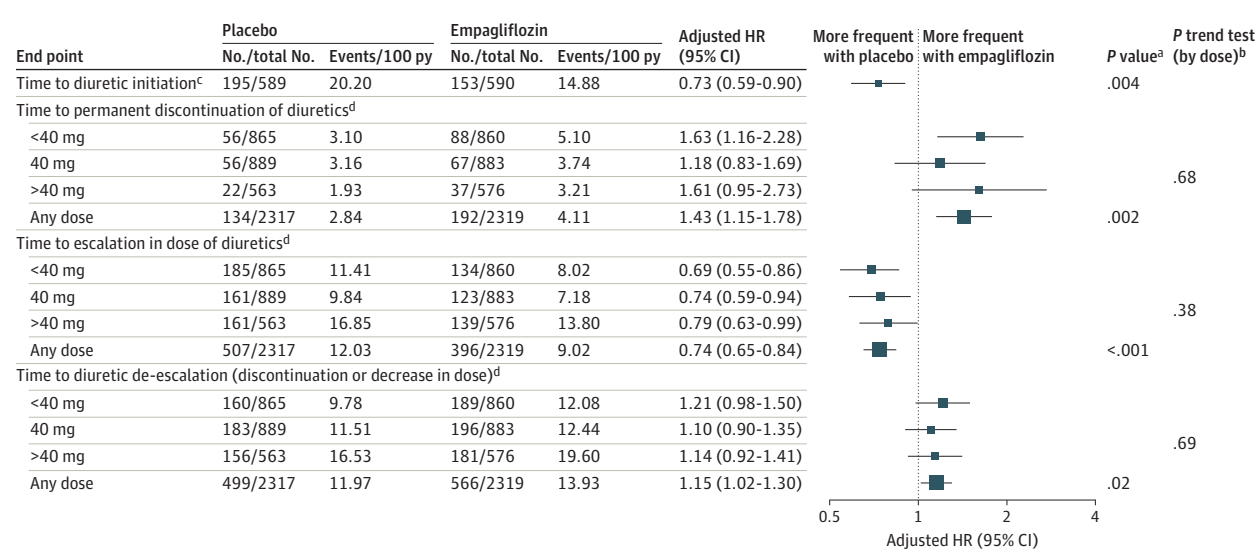
creased likelihood of diuretic dose escalation (HR, 0.74; 95% CI, 0.65-0.84;  $P < .001$ ). Likelihood of diuretic discontinuation, de-escalation, and escalation did not vary by baseline diuretic dose.

## Discussion

This study yields several notable findings. First, analysis of the placebo arm of the EMPEROR-Preserved trial showed that diuretic therapy was a risk marker for adverse outcomes in HFpEF, with higher doses associated with greater risk. Second, the benefit of empagliflozin on first HHF or CV death, first



Figure 4. Change in Diuretic Therapy in Empagliflozin vs Placebo Arms



HR indicates hazard ratio; py, patient-year.

<sup>a</sup> P value for comparison of empagliflozin vs placebo.

<sup>b</sup> P trend for comparison of baseline diuretic doses of <40mg, 40mg, and

>40mg.

<sup>c</sup> For patients not receiving diuretic therapy at baseline.

<sup>d</sup> For patients receiving diuretic therapy at baseline.

HHF, and total HHF was consistent regardless of background diuretic therapy or diuretic dose. Third, patients taking higher doses of diuretics were less likely to experience weight loss or decrease in hemoglobin A<sub>1c</sub> (in patients with diabetes) with empagliflozin. Fourth, among patients taking diuretics, the addition of empagliflozin was associated with an increased risk of volume depletion events but not of hyperkalemia or acute kidney failure. Fifth, patients randomized to empagliflozin (vs placebo) had a lesser likelihood of diuretic initiation and dose escalation and a greater likelihood of diuretic de-escalation and permanent discontinuation.

In the EMPEROR-Preserved trial, approximately 80% of the patients were treated with diuretics at baseline, which is similar to other contemporary HFpEF and HF with reduced ejection fraction (HFREF) cohorts.<sup>7-11</sup> To our knowledge, the current study is the first to delineate characteristics of diuretic use in patients with HFpEF. The most common furosemide-equivalent dose of diuretics in EMPEROR-Preserved was 40 mg, similar to patients with HFREF in the DAPA-HF trial.<sup>7</sup> Patients who were not treated with diuretics at baseline had the most favorable clinical profile and better outcomes. Higher baseline doses of diuretics were associated with more severe HF, poorer HRQoL, greater burden of comorbidities, and a higher risk of adverse outcomes. However, the benefit of empagliflozin on the primary outcome (first HHF or CV death), first HHF, total HHF, eGFR slope, and HRQoL was consistent regardless of baseline diuretic status or dose. This is in line with findings from HFREF patients in the DAPA-HF trial,<sup>7</sup> where baseline diuretic therapy did not modify the benefit of dapagliflozin on these outcomes.

Several potential mechanisms of benefit have been proposed with SGLT2 inhibitors.<sup>12</sup> SGLT2 inhibitors have been shown to activate a transcriptional paradigm that mimics oxygen and nutrient deprivation, which in turn upregulates autophagy of

damaged organelles.<sup>4</sup> This results in decreased inflammasome activation, which lessens cardiomyocyte dysfunction and coronary microvascular injury. SGLT2 inhibitors also improve cardiac energy metabolism, specifically by enhancing oxidation of long-chain fatty acids, which is the primary fuel of the heart.<sup>13</sup> Overall, SGLT2-inhibitors improve cardiomyocyte physiology and metabolism and decrease inflammation and oxidative stress, 2 important mechanisms in the pathophysiology of HFpEF. SGLT2 inhibitors also reduce the mass and proinflammatory state of epicardial adipose tissue, which can act as a transducer of systemic inflammatory process onto the heart.<sup>14</sup>

SGLT2 inhibitors inhibit sodium and glucose reabsorption in the proximal renal tubule and thus promote both natriuretic and osmotic diuresis. However, the diuretic effects are short lived and, even if durable, it is not clear whether these effects contribute in any way to the heart failure benefits seen with these drugs. The finding that statistical significance was achieved in the EMPEROR-Preserved trial as early as 18 days following randomization is a function of the number of events noted at that time and does not imply any specific mechanism.<sup>15</sup>

The favorable association of empagliflozin with decreased diuretic use also does not provide specific mechanistic insights. Changes in the use of diuretics often precedes and follows hospitalization for heart failure and thus any drug that reduces admissions for worsening heart failure would be expected to shift diuretic use in a favorable manner. Furthermore, between-group differences in the use of diuretics in EMPEROR-Preserved began to emerge 60 to 90 days following randomization, a time course that is inconsistent with an immediate natriuretic effect of SGLT2 inhibitors. It is therefore noteworthy that a reduced requirement for diuretics has been noted with other disease-modifying HF drugs, includ-

ing drugs that have no diuretic effects. Specifically, patients with HFrEF who were treated with sacubitril/valsartan (vs enalapril) were more likely to have their loop diuretic dose reduced and less likely to have it increased.<sup>16</sup> Sacubitril/valsartan was also associated with a modestly lower frequency of diuretic initiation in patients with HFpEF compared with valsartan alone.<sup>17</sup>

The results of this analysis have important clinical implications. In patients who are not taking diuretics, SGLT2 inhibitors should not be withheld due to concerns of destabilizing the euvoletic status, as empagliflozin improved clinical outcomes without increasing volume depletion events in this population. At the time an SGLT2 inhibitor is initiated, most patients with HFpEF would not require a change in diuretic dose. However, as in every patient with heart failure, physicians should be prepared to adjust the dose of diuretics according to each patient's needs. Doing so will minimize the small risk of volume depletion when SGLT2 inhibitors and loop diuretics are combined. Patient education, daily weights, and monitoring for volume depletion is advisable. In the longer term, as HF status improves in patients taking empagliflozin, the need for diuretics may be reduced.

## Limitations

The results of this study should be interpreted with certain limitations in mind. This analysis was not prespecified. Although several possible confounding factors were adjusted for, residual confounding is possible, particularly when comparing prognoses across diuretic dose categories in the placebo arm. Markers of diuresis and natriuresis, such as urine volumes and urinary sodium excretion, were not assessed.

## Conclusions

In this analysis, empagliflozin use was associated with improvement in HHF or CV death, first HHF, total HHF, eGFR slope, and KCCQ scores in patients with HFpEF, regardless of background diuretics use or dose. Empagliflozin was associated with a slightly increased risk of volume depletion in patients taking diuretics. Empagliflozin also reduced the likelihood of diuretic initiation and dose escalation and increased the likelihood of diuretic de-escalation and permanent discontinuation.

### ARTICLE INFORMATION

**Accepted for Publication:** March 10, 2023.

**Published Online:** May 24, 2023.

doi:10.1001/jamacardio.2023.1090

**Open Access:** This is an open access article distributed under the terms of the [CC-BY-NC-ND License](https://creativecommons.org/licenses/by-nc-nd/4.0/). © 2023 Butler J et al. *JAMA Cardiology*.

**Author Affiliations:** Department of Medicine, University of Mississippi Medical Center, Jackson (Butler, Usman); Baylor Scott and White Research Institute, Dallas, Texas (Butler); National and Kapodistrian University of Athens School of Medicine, Athens University Hospital Attikon, Athens, Greece (Filippatos); Université de Lorraine, Inserm, Centre d'Investigations Cliniques, Plurithématique 14-33, and Inserm U1116, CHRU, F-CRIN INI-CRCT (Cardiovascular and Renal Clinical Trialists), Nancy, France (Ferreira); Klinik für Innere Medizin III, Universitätsklinikum des Saarlandes, Saarland University, Homburg/Saar, Germany (Böhm); Boehringer Ingelheim International GmbH, Ingelheim, Germany (Brueckmann, Sumin); First Department of Medicine, Faculty of Medicine Mannheim, University of Heidelberg, Mannheim, Germany (Brueckmann); Massachusetts General Hospital and Bain Institute for Clinical Research, Boston (Januzzi); Cedars-Sinai Medical Center, Los Angeles, California (Kaul); Central Michigan University, Mount Pleasant (Piña); Wrocław Medical University, Wrocław, Poland (Ponikowski); Cardiovascular Department, Cardiology Division, Papa Giovanni XXIII Hospital, Bergamo, Italy (Senni); Division of Cardiac Surgery, St Michael's Hospital, University of Toronto, Toronto, Ontario, Canada (Verma); Elderbrook Solutions on behalf of Boehringer Ingelheim, Biberach, Germany (Zaremba-Pechmann); Department of Medical Statistics, London School of Hygiene and Tropical Medicine, London, United Kingdom (Pocock); Baylor Heart and Vascular Institute, Baylor University Medical Center, Dallas, Texas (Packer); Imperial College, London, United Kingdom

(Packer); Berlin Institute of Health Center for Regenerative Therapies (BCRT), Charité Universitätsmedizin, Berlin, Germany (Anker); German Centre for Cardiovascular Research (DZHK) partner site Berlin, Charité Universitätsmedizin, Berlin, Germany (Anker).

**Author Contributions:** Dr Butler had full access to all of the data in the study and takes responsibility for the integrity of the data and the accuracy of the data analysis.

**Concept and design:** Butler, Usman, Filippatos, Böhm, Brueckmann, Januzzi, Ponikowski, Sumin, Verma, Packer, Anker.

**Acquisition, analysis, or interpretation of data:**

Butler, Filippatos, Ferreira, Böhm, Brueckmann, Januzzi, Kaul, Pina, Senni, Sumin, Zaremba-Pechmann, Pocock, Packer.

**Drafting of the manuscript:** Butler, Januzzi, Senni, Verma.

**Critical revision of the manuscript for important intellectual content:** All authors.

**Statistical analysis:** Kaul, Sumin, Zaremba-Pechmann, Pocock.

**Obtained funding:** Brueckmann, Sumin, Packer.

**Administrative, technical, or material support:** Butler, Usman, Brueckmann, Sumin, Verma, Packer.

**Supervision:** Butler, Ferreira, Brueckmann, Januzzi, Ponikowski, Sumin, Packer.

**Conflict of Interest Disclosures:** Dr Butler reports consulting fees from Abbott, Adrenomed, American Regent, Amgen, Applied Therapeutics, AstraZeneca, Bayer, Boehringer Ingelheim, Cardior, CVRx, Eli Lilly, Foundry, G3 Pharma, Imbria, Impulse Dynamics, Innolife, Janssen, LivaNova, Luitpold, Medtronic, Merck, Novartis, NovoNordisk, Occlutech, Pfizer, Relypsa, Roche, Sanofi, Sequana Medical, V-Wave Ltd, and Vifor. Dr Filippatos reports lectures and/or committee member contributions in trials sponsored by Medtronic, Vifor, Servier, Novartis, Bayer, Amgen, and Boehringer Ingelheim as well as grants from the European Union outside the submitted work. Dr Ferreira reports consulting fees from Boehringer

Ingelheim during the conduct of the study. Dr Böhm is supported by the Deutsche Forschungsgemeinschaft (German Research Foundation; TTR 219, project No. 322900939) and reports personal fees from Abbott, Amgen, AstraZeneca, Bayer, Boehringer Ingelheim, Bristol Myers Squibb, Cytokinetics, Medtronic, Novartis, Servier, and Vifor during the conduct of the study. Drs Brueckmann and Sumin are employees of Boehringer Ingelheim. Dr Januzzi reports grant support, consulting income, and participation in clinical end point committees/data safety monitoring boards from Janssen; participation in clinical end point committees/data safety monitoring boards from Boehringer Ingelheim; grant support from Novartis, Innolife, Applied Therapeutics, and Siemens Diagnostics; and consultancy fees from Novartis, Roche Diagnostics, and Abbott Diagnostics. Dr Kaul reports personal fees from Boehringer Ingelheim during the conduct of the study and personal fees from Abbott, Amarin, AstraZeneca, Janssen Pharmaceuticals, Merck, Novo Nordisk, GSK and Novartis as well as stock equity in Johnson and Johnson outside the submitted work. Dr Piña reports personal fees from Boehringer Ingelheim and serving on an advisory board for AstraZeneca. Dr Ponikowski reports personal fees or other from Boehringer Ingelheim, AstraZeneca, Servier, Bristol Myers Squibb, Amgen, Novartis, Merck, Pfizer, Berlin Chemie, Cibiem, Bayer, RenalGuardSolution, and Respicardia as well as grants and personal fees from Vifor Pharma. Dr Senni reports consultancy fees from Abbotts, Bayer, Bayer Healthcare, Merck, Novartis, and Vifor Pharma. Dr Verma holds a Tier 1 Canada Research Chair in Cardiovascular Surgery; reports receiving research grants and honoraria from Amarin, Amgen, AstraZeneca, Bayer, Boehringer Ingelheim, Bristol Myers Squibb, Eli Lilly, HLS Therapeutics, Janssen, Novartis, Novo Nordisk, PhaseBio and Pfizer; honoraria from Sanofi, Sun Pharmaceuticals, and the Toronto Knowledge Translation Working Group; and personal fees from S & L Solutions,

Canadian Medical and Surgical Knowledge Translation Research Group, and EOCI. He is a member of the scientific excellence committee of the EMPEROR-Reduced trial (Empagliflozin Outcome Trial in Patients with Chronic Heart Failure with Reduced Ejection Fraction) and served as a national lead investigator of the DAPA-HF (Dapagliflozin and Prevention of Adverse Outcomes in Heart Failure) and EMPEROR-Reduced trials. He is the president of the Canadian Medical and Surgical Knowledge Translation Research Group, a federally incorporated not-for-profit physician organization. Dr Zaremba-Pechmann is a contractor at Elderbrook Solutions, contracted by Boehringer Ingelheim. Dr Pocock reports personal fees from Boehringer Ingelheim during the conduct of the study. Dr Packer reports personal fees from Boehringer Ingelheim during the conduct of the study and personal fees from AbbVie, Actavis, Altimmune, Amgen, Amarin, Ardelyx, AstraZeneca, Boehringer Ingelheim, Bristol Myers Squibb, Caladrius, Casana, CSL Behring, Cytokinetics, Eli Lilly, Johnson & Johnson, Imara, Moderna, Novartis, ParatusRx, Pfizer, Reata, Regeneron, Relypsa, Salamandra, Synthetic Biologics, and Theravance outside the submitted work. Dr Anker has received grants from Vifor; has received personal fees from Vifor, Bayer, Boehringer Ingelheim, Brahms, Novartis, Occlutech, Servier, Impulse Dynamics, Cardiac Dimensions, SAB Biotherapeutics, Thermo Fisher Scientific, and V-Wave and has received grants and personal fees from Abbott Vascular outside the submitted work. No other disclosures were reported.

**Funding/Support:** The EMPEROR-Preserved trial was funded by the Boehringer Ingelheim and Eli Lilly and Company Diabetes Alliance.

**Role of the Funder/Sponsor:** The executive committee, which included representatives of Boehringer Ingelheim and academic partners, developed the protocol and statistical analysis plan, oversaw the recruitment of patients, trial conduct, data collection and management and supervised the data analysis.

**Data Sharing Statement:** See Supplement 3.

**Additional Contributions:** Graphical assistance was provided by 7.4 Limited and technical/

submission assistance was provided by Elevate Scientific Solutions, both supported financially by Boehringer Ingelheim.

## REFERENCES

- Anker SD, Butler J, Filippatos G, et al; EMPEROR-Preserved Trial Investigators. Empagliflozin in heart failure with a preserved ejection fraction. *N Engl J Med*. 2021;385(16):1451-1461. doi:10.1056/NEJMoa2107038
- Tang J, Ye L, Yan Q, Zhang X, Wang L. Effects of sodium-glucose cotransporter 2 inhibitors on water and sodium metabolism. *Front Pharmacol*. 2022;13:800490. doi:10.3389/fphar.2022.800490
- Lopaschuk GD, Verma S. Mechanisms of cardiovascular benefits of sodium glucose co-transporter 2 (SGLT2) inhibitors: a state-of-the-art review. *JACC Basic Transl Sci*. 2020;5(6):632-644. doi:10.1016/j.jacbs.2020.02.004
- Packer M. Autophagy stimulation and intracellular sodium reduction as mediators of the cardioprotective effect of sodium-glucose cotransporter 2 inhibitors. *Eur J Heart Fail*. 2020;22(4):618-628. doi:10.1002/ehf.1732
- Verma A, Patel AB, Waikar SS. SGLT2 inhibitor: not a traditional diuretic for heart failure. *Cell Metab*. 2020;32(1):13-14. doi:10.1016/j.cmet.2020.06.014
- Anker SD, Butler J, Filippatos GS, et al; EMPEROR-Preserved Trial Committees and Investigators. Evaluation of the effects of sodium-glucose co-transporter 2 inhibition with empagliflozin on morbidity and mortality in patients with chronic heart failure and a preserved ejection fraction: rationale for and design of the EMPEROR-Preserved trial. *Eur J Heart Fail*. 2019;21(10):1279-1287. doi:10.1002/ehf.1596
- Jackson AM, Dewan P, Anand IS, et al. Dapagliflozin and diuretic use in patients with heart failure and reduced ejection fraction in DAPA-HF. *Circulation*. 2020;142(11):1040-1054. doi:10.1161/CIRCULATIONAHA.120.047077
- Pitt B, Pfeffer MA, Assmann SF, et al; TOPCAT Investigators. Spironolactone for heart failure with preserved ejection fraction. *N Engl J Med*. 2014;370(15):1383-1392. doi:10.1056/NEJMoa1313731
- Solomon SD, Vaduganathan M, Claggett BL, et al. Baseline characteristics of patients with HF with mildly reduced and preserved ejection fraction: DELIVER trial. *JACC Heart Fail*. 2022;10(3):184-197. doi:10.1016/j.jchf.2021.11.006
- Zannad F, McMurray JJ, Krum H, et al; EMPHASIS-HF Study Group. Eplerenone in patients with systolic heart failure and mild symptoms. *N Engl J Med*. 2011;364(1):11-21. doi:10.1056/NEJMoa1009492
- Solomon SD, McMurray JJV, Claggett B, et al; DELIVER Trial Committees and Investigators. Dapagliflozin in heart failure with mildly reduced or preserved ejection fraction. *N Engl J Med*. 2022;387(12):1089-1098. doi:10.1056/NEJMoa2206286
- Zelniker TA, Braunwald E. Mechanisms of cardiorenal effects of sodium-glucose cotransporter 2 inhibitors: JACC state-of-the-art review. *J Am Coll Cardiol*. 2020;75(4):422-434. doi:10.1016/j.jacc.2019.11.031
- Cowie MR, Fisher M. SGLT2 inhibitors: mechanisms of cardiovascular benefit beyond glycaemic control. *Nat Rev Cardiol*. 2020;17(12):761-772. doi:10.1038/s41569-020-0406-8
- Packer M. Epicardial adipose tissue may mediate deleterious effects of obesity and inflammation on the myocardium. *J Am Coll Cardiol*. 2018;71(20):2360-2372. doi:10.1016/j.jacc.2018.03.509
- Butler J, Siddiqi TJ, Filippatos G, et al. Early benefit with empagliflozin in heart failure with preserved ejection fraction: insights from the EMPEROR-Preserved trial. *Eur J Heart Fail*. 2022;24(2):245-248. doi:10.1002/ehf.2420
- Vardeny O, Claggett B, Kachadourian J, et al. Reduced loop diuretic use in patients taking sacubitril/valsartan compared with enalapril: the PARADIGM-HF trial. *Eur J Heart Fail*. 2019;21(3):337-341. doi:10.1002/ehf.1402
- Chatur S, Claggett BL, Vardeny O, et al. Sacubitril/valsartan and loop diuretic requirement in heart failure with preserved ejection fraction in the PARAGON-HF trial. *Eur J Heart Fail*. 2023;25(1):87-94. doi:10.1002/ehf.2703