



**HAL**  
open science

# Liver tests, cardiovascular outcomes and effects of empagliflozin in patients with heart failure and preserved ejection fraction: the EMPEROR-Preserved Trial

Michael Böhm, Javed Butler, Marcin Krawczyk, Felix Mahfoud, Bernhard Haring, Gerasimos Filippatos, João Pedro Ferreira, Stuart J Pocock, Martina Brueckmann, Anne Pernille Ofstad, et al.

## ► To cite this version:

Michael Böhm, Javed Butler, Marcin Krawczyk, Felix Mahfoud, Bernhard Haring, et al.. Liver tests, cardiovascular outcomes and effects of empagliflozin in patients with heart failure and preserved ejection fraction: the EMPEROR-Preserved Trial. *European Journal of Heart Failure*, 2023, 25 (8), pp.1375-1383. 10.1002/ejhf.2922 . hal-04123514

**HAL Id: hal-04123514**

**<https://hal.univ-lorraine.fr/hal-04123514>**

Submitted on 9 Jun 2023

**HAL** is a multi-disciplinary open access archive for the deposit and dissemination of scientific research documents, whether they are published or not. The documents may come from teaching and research institutions in France or abroad, or from public or private research centers.

L'archive ouverte pluridisciplinaire **HAL**, est destinée au dépôt et à la diffusion de documents scientifiques de niveau recherche, publiés ou non, émanant des établissements d'enseignement et de recherche français ou étrangers, des laboratoires publics ou privés.

Copyright

17.04.2023

## Liver tests, cardiovascular outcomes and effects of empagliflozin in patients with heart failure and preserved ejection fraction: the EMPEROR-Preserved Trial

Michael Böhm<sup>1</sup>; Javed Butler<sup>2,3</sup>; Marcin Krawczyk<sup>4</sup>, Felix Mahfoud<sup>1</sup>; Bernhard Haring<sup>1</sup>; Gerasimos Filippatos<sup>5</sup>; João Pedro Ferreira<sup>6</sup>; Stuart J. Pocock<sup>7</sup>; Martina Brueckmann<sup>8,9</sup>; Anne Pernille Ofstad<sup>10</sup>; Elke Schüler<sup>11</sup>; Christoph Wanner<sup>12</sup>; Subodh Verma<sup>13</sup>; Milton Packer<sup>14,15</sup>; Stefan D. Anker<sup>16</sup>; on behalf of the EMPEROR-Preserved Trial Committees and Investigators

<sup>(1)</sup>Klinik für Innere Medizin III, Universitätsklinikum des Saarlandes, Saarland University, Kirrberger Str.1, 66421 Homburg/Saar, Germany (Prof M Böhm MD, Prof F Mahfoud MD) and Cape Heart Institute, Cape Town, SA (Prof M Böhm MD); <sup>(2)</sup>Department of Medicine, University of Mississippi School of Medicine, Department of Medicine (L650), 2500 N. State St, Jackson, MS 39216 Jackson, MS; USA (Prof J Butler MD); <sup>(3)</sup>Baylor Scott and White Research Institute, Dallas, TX; USA (Prof J Butler MD); <sup>(4)</sup>Klinik für Innere Medizin II, Universitätsklinikum des Saarlandes, Saarland University, Kirrberger Str. 1, 66421 Homburg/Saar (Prof M Krawczyk MD); <sup>(5)</sup>National and Kapodistrian University of Athens School of Medicine, Athens University Hospital Attikon, 1Rimini St, 12462 Athens, Greece (Prof G Filippatos MD); <sup>(6)</sup>Université de Lorraine, Centre d'Investigation Clinique- Plurithématique Inserm CIC-P 1433, Nancy, France Inserm U1116, CHRU Nancy Brabois, F-CRIN INI-CRCT (Cardiovascular and Renal Clinical Trialists), Nancy, France & Cardiovascular R&D Centre – UnIC@RISE, Department of Physiology and Cardiothoracic Surgery, Faculty of Medicine of the University of Porto, Porto, Portugal (Prof J P Ferreira MD); <sup>(7)</sup>Department of Medical Statistics, London School of Hygiene & Tropical Medicine, London, UK (Prof S J Pocock MD); <sup>(8)</sup>Boehringer Ingelheim International, Binger Str. 173, 55218 Ingelheim, Germany (M Brueckmann MD); <sup>(9)</sup>First Department of Medicine, Faculty of Medicine Mannheim, University of Heidelberg, Mannheim, Germany (M Brueckmann MD); <sup>(10)</sup>Medical Department, Boehringer Ingelheim Norway KS, Hagaløkkveien 26, 1383 Asker, Norway (A P Ofstad MD) and Oslo Diabetes Research Center, Oslo, Norway (A P Ofstad MD); <sup>(11)</sup>mainanalytics GmbH, Sulzbach, Otto-Volger-Str. 3c, 65843 Sulzbach/Taunus, Germany (E Schüler); <sup>(12)</sup>Medizinische Klinik und Poliklinik 1, Schwerpunkt Nephrologie, Universitätsklinikum Würzburg, Oberdürrbacher Str. 6, 97080 Würzburg, Germany (Prof C Wanner MD); <sup>(13)</sup>Division of Cardiac Surgery, St Michael's Hospital, and Departments of Surgery, and Pharmacology and Toxicology, University of Toronto, Ontario, Canada (Prof S Verma MD); <sup>(14)</sup>Baylor University Medical Center, 3500 Gaston Ave, TX 75246, Dallas, USA (Prof M Packer MD); <sup>(15)</sup>Imperial College, Exhibition Road, SW7 2AZ London, UK (Prof M Packer MD); <sup>(16)</sup>Department of Cardiology (CVK); and Berlin Institute of Health Center for Regenerative Therapies (BCRT); German Centre for Cardiovascular Research (DZHK) partner site Berlin; Charité Universitätsmedizin Berlin, Augustenburger Platz 1, 13353 Berlin, Germany (Prof S D Anker MD)

### Correspondence to:

Michael Böhm, MD  
 Universitätsklinikum des Saarlandes, Klinik für Innere Medizin III  
 Saarland University  
 Kardiologie, Angiologie und Internistische Intensivmedizin  
 Kirrberger Str. 1  
 66421 Homburg/Saar, Germany  
 Tel.: (+49)-6841-16-15031  
 Fax: (+49)-6841-16-15032  
 E-mail: [michael.boehm@uks.eu](mailto:michael.boehm@uks.eu)

This article has been accepted for publication and undergone full peer review but has not been through the copyediting, typesetting, pagination and proofreading process which may lead to differences between this version and the [Version of Record](#). Please cite this article as doi: [10.1002/ejhf.2922](https://doi.org/10.1002/ejhf.2922)

This article is protected by copyright. All rights reserved.

**Aim** The prognostic implication of elevated liver tests in heart failure with preserved ejection fraction (HFpEF) is uncertain. This analysis investigates the association of liver markers with heart failure hospitalization (HHF) and cardiovascular death (CVD), and the treatment effect of empagliflozin across the range of liver marker levels.

**Methods and results** The double-blind, placebo-controlled EMPEROR-Preserved (EMPagliflozin outcomE tRial in Patients With chrOnic hearT Failure with Preserved Ejection Fraction) enrolled 5988 patients with HFpEF (ejection fraction >40%). Patients in New York Heart Association class II-IV and elevated NTpro-BNP were randomized to receive empagliflozin 10 mg daily or placebo in addition to usual therapy. Patients with significant liver disease were excluded. The primary endpoint was time to first adjudicated HHF or CVD. We explored the association of liver function abnormalities with heart failure outcomes in patients on placebo, the effects of empagliflozin on liver tests and the treatment effects of empagliflozin on HF outcomes across categories of liver laboratory values. High alkaline phosphatase (ALP) (trend  $p < 0.0001$ ), low albumin (trend  $p < 0.0001$ ) and high bilirubin ( $p = 0.02$ ) were associated with poorer outcomes for HHF or CVD, while high AST was not, and high ALT was associated with better outcomes. Empagliflozin had no significant effects on liver tests compared to placebo except for albumin which was significantly increased. The treatment effect of empagliflozin on outcomes was not modified by liver tests.

**Conclusion** Abnormalities of liver function tests are associated differently with heart failure outcomes. Salutary effects of empagliflozin on liver tests were not observed although albumin increased. The treatment benefits of empagliflozin were not affected by baseline values of liver parameters.

**Funding** Boehringer Ingelheim, Ingelheim, Germany, and Eli Lilly, Indianapolis, US

**Keywords:** Heart failure – heart failure with preserved ejection fraction – liver steatosis – liver fibrosis – SGLT2 inhibitors – empagliflozin

This study is registered with [URL:https://www.clinicaltrials.gov](https://www.clinicaltrials.gov). Unique identifier: NCT03057951.

## Introduction

Liver markers are frequently abnormal in patients with heart failure (1-3). There are robust observations in acute and chronic heart failure (4), but data specifically in heart failure with preserved ejection fraction (HFpEF) are sparse (5). Liver marker abnormalities are suggested to be due to hypoperfusion and congestion (2,3,6,7) and are sensitive to decongestion (8). Neuroendocrine activation in liver disease can promote pathological cardiovascular phenotypes mediated by changes in inflammation, oxidative stress, autonomic dysregulation, and endothelial dysfunction (9). These close and complex interactions suggest that pathological liver parameters could have an important impact on outcomes in patients with heart failure. A recent report showed that increased markers of liver disease are negatively associated with outcomes in chronic heart failure and can be improved by sacubitril/valsartan (). Dapagliflozin did not change liver markers, specifically bilirubin, which was associated with poorer outcomes (10). HFpEF is associated with various non-cardiac comorbidities (11), among them obesity and metabolic disease (12,13). Current guidelines recommend (class IA evidence) SGLT-2 inhibitors for the treatment of heart failure with reduced ejection fraction (HFrEF) (14,15) since they reduced cardiovascular death (CVD) and hospitalization for heart failure (HHF) in HFrEF (16,17). In HFpEF, empagliflozin reduced the composite of HHF and CVD (18). The recent AHA/ACC/HFSA-guidelines recommend empagliflozin for the treatment of HFpEF (Class IIa, 15). In the current study, we assessed the interaction of liver markers on heart failure outcomes as well as on the treatment effect of empagliflozin across the spectrum of liver pathologies in HFpEF.

## Methods

### Study design

The design and results of the EMPEROR-Preserved trial encompassing 5988 patients have been published previously (18,19). The ethical committees of each of the participating institutions approved the protocol and all patients gave written informed consent. The registration identifier at ClinicalTrials.gov is NCT03057951.

### **Studied patients and procedures**

Patients with heart failure and ejection fraction >40% were screened and those fulfilling all eligibility criteria were randomized double-blind in a 1:1 fashion to receive placebo or empagliflozin 10 mg daily in addition to their usual therapy for heart failure. Patients with or without diabetes were enrolled. The potential for drug-induced liver injury by SGLT2-inhibitors has been continuously monitored by the sponsors and regulators. Therefore, patients with liver tests threefold above the upper limit of normal (3x ULN) at screening were excluded. During follow-up, all accompanying treatments could be altered or initiated according to the changes in the clinical status of the patients at the discretion of the investigator. Patients were assessed at screening and at all clinic follow-up study visits for major outcomes, vital signs, laboratory values including liver values and estimated glomerular filtration rate (eGFR) by the Chronic Kidney Disease Epidemiology Collaboration (CKD-EPI), adverse events and changes in medications or in clinical status that reflected changes in the course of heart failure. All randomized individuals were followed for the occurrence of prespecified outcomes for the entire duration of the trial regardless of whether the study participants had taken the study medication or were adherent with the study procedures according to the intention to treat principle.

### **Liver tests**

Direct and indirect liver tests including ALP, ALT, AST, bilirubin, and albumin were measured in validated laboratories at baseline and at follow-up visits. Liver parameters at baseline were assessed in the overall population, which was divided into subgroups according to tertiles and normal or pathological values according to the reference values. We studied the risk for the primary endpoint across these subgroups treated with placebo to assess whether liver tests are associated with heart failure events. Next, we evaluated the effects of empagliflozin compared with placebo on liver markers. Finally, we compared the effects of empagliflozin vs. placebo on the primary endpoint across tertiles and for normal versus elevated values of liver markers. Additionally we explored separately patients with increased total bilirubin and increased levels of unconjugated bilirubin in the absence of any other liver diseases vs increased total bilirubin but no increase in unconjugated vs normal bilirubin, as this constellation could reflect Gilbert's syndrome, which could confound the association.

### **Outcome measures**

The primary endpoint was the composite of time to first adjudicated hospitalization for heart failure or CV death. In addition, we assessed time to first hospitalization for heart failure, CV death and all-cause mortality in context of patients with elevated bilirubin (see below).

### **Statistical analyses**

For the association of liver tests with outcomes and treatment effects of empagliflozin across liver test categories, Cox proportional hazard regression models with prespecified covariates of age, sex, geographical region, diabetes status at baseline, left ventricular ejection fraction and estimated GFR at baseline were used. To account for non-linear relationships, the association between hazard and liver tests as

continuous variable was analyzed non-parametrically using restricted cubic splines allowing for non-linear relationships. Four knots (5<sup>th</sup>, 35<sup>th</sup>, 65<sup>th</sup>, and 95<sup>th</sup> percentile of baseline values) were chosen for the analysis. Hazard ratios (HR) and 95% confidence bands were displayed using the 33.3<sup>th</sup> percentile (T1) as reference (HR = 1). The interaction between liver tests and treatment groups on the occurrence of the prespecified outcomes was tested using a treatment-by-value interaction term (trend test assuming a linear order across the tertiles). Changes in liver tests were analyzed in a mixed model with repeated measures (MMRM). The MMRM models included the same covariates as the Cox model with baseline and baseline by visit interaction in addition. All analyses were performed using SAS version 9.4 (SAS Institute, NC, US). All reported p-values are 2-sided and p<0.05 was considered as statistically significant in all cases. No adjustments for multiple testing were made due to the exploratory nature of the study.

### **Role of the funding source**

EMPEROR-Preserved was funded by Boehringer Ingelheim and Eli Lilly. The executive committee designed the protocol and identified clinical sites in collaboration with the sponsor. The sponsor was responsible for collection, monitoring and analysis of the data. The manuscript was written by the lead author with contributions from the co-authors.

## **Results**

### **Change of liver tests by empagliflozin**

A total of 5988 patients were randomly assigned to receive either empagliflozin (2997 patients, 10 mg once daily) or placebo (2991 patients).

Supplement Table 1 shows the demographic baseline characteristics across the tertiles of liver function tests. Patients with higher alkaline phosphatase (ALP), bilirubin, and AST had higher New York Heart Association (NYHA) functional classification and median NTpro-BNP, while there was an inverse association with albumin and ALT (Supplement Table 1, A-E). As this trial excluded patients with elevated liver values, the minority of patients had values greater than upper limit of normal (ULN) at baseline, placebo/empagliflozin for AST (6.1/6.4%), ALT (4.9/4.9%), ALP (13.0/13.4%), bilirubin (4.9/5.6%), albumin (0.2/0.2%)(data not shown).

High alkaline phosphatase (ALP), high bilirubin and low albumin in the third tertile or when levels were above the normal range were associated with higher event rates for the primary outcome (Figure 1A-C). No such associations were detected for AST (Figure 1D), while high ALT associated with better outcomes (Figure 1E). Cubic splines summarize the association of ALP, albumin and bilirubin with poorer outcomes (Figure 2A-C). AST (Figure 2D) was not associated, while ALT was associated with slightly less primary outcomes (Figure 2E).

When assessing patients with increased total and increased unconjugated bilirubin (Gilbert-like constellation), we found that the association with bilirubin to outcomes is similar for the primary endpoint (Figure 3A), first HHF (Figure 3B), all-cause death (Figure 3C) and CVD (Figure 3D) regardless of which fraction of bilirubin is increased, indicating that this constellation had no meaningful effects on the bilirubin-outcome association.



We explored how treatment with empagliflozin compared to placebo on change in liver parameters. There are no meaningful changes of empagliflozin (vs placebo) for ALP (Figure 4A), bilirubin (Figure 4C), and AST (Figure 4D). For ALT, there were some minor changes, which should not be considered clinically meaningful. There was a statistically significant effect from week 4 to week 120 for empagliflozin to increase albumin levels (Figure 4B), regarded as not clinically meaningful changes. The statistical tests are summarized in Supplemental Table 2.

Finally, we explored whether liver tests had an impact on the treatment effect on empagliflozin. The results of the primary endpoint are shown in Figure 5. There was no heterogeneity of the treatment effect of empagliflozin at different tertiles of ALP (Figure 5A) ( $p$  trend = 0.75), albumin ( $p$  trend = 0.87), bilirubin ( $p$  trend = 0.54), AST ( $p$  trend = 0.88) and ALT ( $p$  trend = 0.17). This relates also for all parameters when values below or above upper limit of normal were compared (lower panels). Also a constellation like characteristic for Gilbert's syndrome did not change the outcome effect of empagliflozin (Figure 6).

## Discussion

In this analysis from the EMPEROR-Preserved trial, we showed that high ALP and bilirubin and low albumin were associated with high risk for HF outcomes in patients with HFpEF, while high ALT was associated with better outcomes. AST was not associated to outcomes.. Empagliflozin did not meaningfully change liver tests and the treatment effect of empagliflozin on the primary outcome was not modified by liver tests.

Heart failure and liver disease often co-exist with ischemia and congestion leading to subsequent fibrosis (20,21). Alongside with heart failure-induced liver damage, non-cardiovascular comorbidities such as metabolic disease and diabetes with obesity and the effect of several drugs (21) are acting in concert resulting in pathologic-hepatic phenotypes. The latter conditions are more prevalent in HFpEF (10,11).

Liver values are frequently elevated in patients with heart failure and a reduced ejection fraction as reported in trials such as DAPA-HF (10), PARADIGM-HF (22) and CHARM (23), but in particular in patients with acute heart failure (6). Many of these factors associate with cardiovascular outcomes such as bilirubin, which is most frequently elevated (10). This report extends those findings by investigating the association of liver tests on outcomes in a population with HFpEF. Similarly, bilirubin, ALP and low albumin are associated with poorer outcomes. This might be a reflection of hemodynamic compromising such as right sided congestion, which has been shown to affect liver function and outcomes (24-26). This is strengthened by the association of tertiles of liver function tests to NTpro-BNP and eGFR. Interestingly, ALT was associated with better prognosis, but influence from non-captured conditions like nutrition, liver perfusion, liver conditions such as fatty liver contributions remain unanswered. Further studies exploring liver status with advanced technologies such as transient elastography or liver biopsy could solve this interesting association. However, similar findings have been reported previously from the TOPCAT study (5) and from the real-world VA Palo Alto Health Care System (27).

As empagliflozin improved heart failure outcomes, we set out to explore the effects of empagliflozin in HFpEF on liver parameters. Given the fact that SGLT-2 inhibitors increase water and sodium excretion and might lead to volume contraction, we only

Accepted Article

saw an increase over time of albumin at some time points but not a reduction of other liver parameters such as bilirubin. This is in agreement with the suggestion that the diuretic effect of empagliflozin is transient and weak in stable chronic heart failure and not strong enough to significantly reduce atrial pressures after three months of treatment (24). Nevertheless, in acute heart failure the situation might be different with a significant improvement in symptoms of congestion as shown in the EMPULSE trial (8).

Elevated bilirubin is the most prevalent pathological liver marker in heart failure (9), but might also serve as a biologically active agent. In a condition referred to as Gilbert's syndrome, individuals suffer from mild bilirubinemia caused by reduced activity of the enzyme UDP-glucuronosyltransferase, which is responsible for the glucuronidation of bilirubin (28). As unconjugated bilirubin and increased total bilirubin levels in the absence of liver disease could exhibit protective effects on cardiovascular diseases (29,30), we did a sensitivity analysis in patients in whom this constellation was observed. However, we did not find a different association of bilirubin elevation with a Gilbert's syndrome-like constellation with the primary outcome. Interestingly, empagliflozin did not change serum concentrations of bilirubin in this population unlike sacubitril/valsartan in the PARADIGM-HF study (22). This might be due to the fact that decongestion as judged from NT-pro-BNP was stronger with sacubitril/valsartan compared with SGLT-2 inhibitors (31,32).

Finally, we observed that liver values did not influence the magnitude of effects of empagliflozin on HHF or CVD. Therefore, empagliflozin can be used in HFpEF patients independently from slightly elevated (<3x ULN) liver parameters.

## Limitations

This is a post-hoc analysis of EMPEROR-Preserved. Thus, the findings should be interpreted with caution. Large scale, long-term follow-up studies utilizing transient elastography and liver biopsies from HFpEF patients under treatment with empagliflozin would be valuable to solve the disparity between the liver fat reduction and no changes of liver values. As patients with  $>3x$  ULN were excluded from the trial, the results could be different in individuals above these levels. HFpEF is a very heterogeneous syndrome suggesting that findings must not apply to all patients with different phenotypes.

## Conclusions

Empagliflozin compared with placebo did not show salutary effects on liver tests in patients with HFpEF. Liver tests did not modify the treatment benefit of empagliflozin to improve heart failure outcomes and was consistent in a broad population of patients including those with pathological liver tests.

## Data sharing

To ensure independent interpretation of clinical study results and enable authors to fulfil their role and obligations under the ICMJE criteria, Boehringer Ingelheim grants all external authors access to relevant clinical study data. In adherence with the Boehringer Ingelheim Policy on Transparency and Publication of Clinical Study Data, scientific and medical researchers can request access to clinical study data after publication of the primary manuscript and secondary analyses in a peer-reviewed journals and regulatory and reimbursement activities are completed, normally within 1 year after the marketing application has been granted by major Regulatory Authorities.

Researchers should use the <https://vivli.org/> link to request access to study data and visit <https://www.mystudywindow.com/msw/datasharing> for further information.

### **Conflict of Interest**

**Michael Böhm** is supported by the Deutsche Forschungsgemeinschaft (German Research Foundation; TTR 219, project number 322900939) and reports personal fees from Abbott, Amgen, Astra Zeneca, Bayer, Boehringer Ingelheim, Cytokinetics, Medtronic, Novartis, Servier and Vifor during the conduct of the study.

**Javed Butler** reports consulting fees from Boehringer Ingelheim, Cardior, CVRx, Foundry, G3 Pharma, Imbria, Impulse Dynamics, Innolife, Janssen, LivaNova, Luitpold, Medtronic, Merck, Novartis, NovoNordisk, Relypsa, Roche, Sanofi, Sequana Medical, V-Wave Ltd., and Vifor. Personal fees from Boehringer Ingelheim during the conduct of the study.

**Marcin Krawczyk** reports no conflicts.

**Felix Mahfoud** is supported by Deutsche Gesellschaft für Kardiologie (DGK), Deutsche Forschungsgemeinschaft (SFB TRR219) and Deutsche Herzstiftung and has received scientific support and/or speaker honoraria from Astra-Zeneca, Bayer, Boehringer Ingelheim, Inari, Medtronic, Merck and ReCor Medical.

**Bernhard Haring** reports no conflicts.

**Gerasimos Filippatos** reports Committee Member contributions in trials. Personal fees from Boehringer Ingelheim during the conduct of the study.

**Joao Pedro Ferreira** reports consulting fees from Boehringer Ingelheim during the conduct of the study.

**Stuart Pocock** reports personal fees from Boehringer Ingelheim during the conduct of the study.

**Martina Brueckmann** is an employee of Boehringer Ingelheim.

**Anne Pernille Ofstad** is an employee of Boehringer Ingelheim.

**Elke Schüler** is an employee of mainanalytics, contracted by Boehringer Ingelheim.

**Christoph Wanner** reports personal fees from Boehringer Ingelheim during the conduct of the study; personal fees from Akebia, AstraZeneca, Bayer, Eli Lilly, GSK, GILEAD, MSD, Mundipharma, Sanofi-Genzyme and Vifor Fresenius outside the submitted work;

**Faiez Zannad** has received steering committee or advisory board fees from Amgen and Boehringer Ingelheim during the conduct of the study.

**Milton Packer** reports consulting fees from Boehringer Ingelheim, during the conduct of the study; consulting fees from Abbvie, Actavis, Altimune, Amarin, Amgen, AstraZeneca, Boehringer Ingelheim, Caladrius, Casana, CSL Behring, Cytokinetics, Imara, Lilly, Moderna, Novartis, Reata, Relypsa, Salamandra.

**Stefan D. Anker** reports grants and personal fees from Vifor Int. and Abbott Vascular, and personal fees from Astra-Zeneca, Bayer, Brahms, Boehringer Ingelheim, Cardiac Dimensions, Novartis, Occlutech, Servier, and Vifor Int. Personal fees from Boehringer Ingelheim during the conduct of the study.

### **Acknowledgments**

We are grateful to Armin Schweitzer for technical and editorial help as well as artwork.

## References

1. Shinagawa H, Inomata T, Koitabashi T, Nakano H, Takeuchi I, Naruke T, Ohsaka T, Nishii M, Takehana H, Izumi T. Prognostic significance of increased serum bilirubin levels coincident with cardiac decompensation in chronic heart failure. *Circ J* 2008;72:364-369.
2. Nikolaou M, Parissis J, Yilmaz MB, Seronde MF, Kivikko M, Laribi S, Paugam-Burtz C, Cai D, Pohjanjousi P, Laterre PF, Deye N, Poder P, Cohen-Solal A, Mebazaa A. Liver function abnormalities, clinical profile, and outcome in acute decompensated heart failure. *Eur Heart J* 2013;34:742-749.
3. Samsky MD, Dunning A, DeVore AD, Schulte PJ, Starling RC, Tang WH, Armstrong PW, Ezekowitz JA, Butler J, McMurray JJ, Teerlink JR, Voors AA, Metra M, Mentz RJ, O'Connor CM, Patel CB, Hernandez AF. Liver function tests in patients with acute heart failure and associated outcomes: insights from ASCEND-HF. *Eur J Heart Fail* 2016;18:424-432.
4. Suzuki K, Claggett B, Minamisawa M, Packer M, Zile MR, Rouleau J, Swedberg K, Lefkowitz M, Shi V, McMurray JJV, Zucker SD, Solomon SD. Liver function and prognosis, and influence of sacubitril/valsartan in patients with heart failure with reduced ejection fraction. *Eur J Heart Fail* 2020;22:1662-1671.
5. Liang W, He X, Wu D, Xu R, Dong B, Owusu-Agyeman M, Zhao J, Cai L, You Z, Dong Y, Liu C. Prognostic implication of liver function tests in heart failure with preserved ejection fraction without chronic hepatic diseases: Insight from TOPCAT trial. *Front Cardiovasc Med* 2021;8:618816.
6. Biegus J, Hillege HL, Postmus D, Valente MA, Bloomfield DM, Cleland JG, Cotter G, Davison BA, Dittrich HC, Fiuzat M, Givertz MM, Massie BM, Metra M, Teerlink JR, Voors AA, O'Connor CM, Ponikowski P. Abnormal liver function tests in acute heart failure: relationship with clinical characteristics and outcome in the PROTECT study. *Eur J Heart Fail* 2016;18:830-839.
7. Ambrosy AP, Vaduganathan M, Huffman MD, Khan S, Kwasny MJ, Fought AJ, Maggioni AP, Swedberg K, Konstam MA, Zannad F, Gheorghide M; EVEREST trial investigators. Clinical course and predictive value of liver function tests in patients hospitalized for worsening heart failure with reduced ejection fraction: an analysis of the EVEREST trial. *Eur J Heart Fail* 2012;14:302-311.
8. Biegus J, Voors AA, Collins SP, Kosiborod MN, Teerlink JR, Angermann CE, Tromp J, Ferreira JP, Nassif ME, Psozka MA, Brueckmann M, Salsali A, Blatchford JP, Ponikowski P. Impact of empagliflozin on decongestion in acute heart failure: the EMPULSE trial. *Eur Heart J* 2023;44:41-50.
9. Matyas C, Haskó G, Liaudet L, Trojnar E, Pacher P. Interplay of cardiovascular mediators, oxidative stress and inflammation in liver disease and its complications. *Nat Rev Cardio*. 2021;18:117-135.

- Accepted Article
10. Adamson C, Cowan LM, de Boer RA, Diez M, Drożdż J, Dukát A, Inzucchi SE, Køber L, Kosiborod MN, Ljungman CEA, Martinez FA, Ponikowski P, Sabatine MS, Lindholm D, Bengtsson O, Boulton DW, Greasley PJ, Langkilde AM, Sjöstrand M, Solomon SD, McMurray JJV, Jhund PS. Liver tests and outcomes in heart failure with reduced ejection fraction: findings from DAPA-HF. *Eur J Heart Fail* 2022;24:1856-1868.
  11. Savarese G, Becher PM, Lund LH, Seferovic P, Rosano GMC, Coats A. Global burden of heart failure: A comprehensive and updated review of epidemiology. *Cardiovasc Res* 2022. doi: 10.1093/cvr/cvac013.
  12. Sorimachi H, Omote K, Omar M, Popovic D, Verbrugge FH, Reddy YNV, Lin G, Obokata M, Miles JM, Jensen MD, Borlaug BA. Sex and central obesity in heart failure with preserved ejection fraction. *Eur J Heart Fail* 2022. doi: 10.1002/ejhf.2563.
  13. Borlaug BA. The pathophysiology of heart failure with preserved ejection fraction. *Nat Rev Cardiol* 2014;11:507-515.
  14. McDonagh TA, Metra M, Adamo M, Gardner RS, Baumbach A, Böhm M, Burri H, Butler J, Čelutkienė J, Chioncel O, Cleland JGF, Coats AJS, Crespo-Leiro MG, Farmakis D, Gilard M, Heymans S, Hoes AW, Jaarsma T, Jankowska EA, Lainscak M, Lam CSP, Lyon AR, McMurray JJV, Mebazaa A, Mindham R, Muneretto C, Francesco Piepoli M, Price S, Rosano GMC, Ruschitzka F, Kathrine Skibelund A; ESC Scientific Document Group. 2021 ESC Guidelines for the diagnosis and treatment of acute and chronic heart failure: Developed by the Task Force for the diagnosis and treatment of acute and chronic heart failure of the European Society of Cardiology (ESC). With the special contribution of the Heart Failure Association (HFA) of the ESC. *Eur J Heart Fail* 2022;24:4-131.
  15. Heidenreich PA, Bozkurt B, Aguilar D, Allen LA, Byun JJ, Colvin MM, Deswal A, Drazner MH, Dunlay SM, Evers LR, Fang JC, Fedson SE, Fonarow GC, Hayek SS, Hernandez AF, Khazanie P, Kittleson MM, Lee CS, Link MS, Milano CA, Nwacheta LC, Sandhu AT, Stevenson LW, Vardeny O, Vest AR, Yancy CW. 2022 AHA/ACC/HFSA Guideline for the management of heart failure: A report of the American College of Cardiology/American Heart Association Joint Committee on Clinical Practice Guidelines. *J Am Coll Cardiol* 2022;79:e263-e421.
  16. McMurray JJV, Solomon SD, Inzucchi SE, Køber L, Kosiborod MN, Martinez FA, Ponikowski P, Sabatine MS, Anand IS, Bělohávek J, Böhm M, Chiang CE, Chopra VK, de Boer RA, Desai AS, Diez M, Drozd J, Dukát A, Ge J, Howlett JG, Katova T, Kitakaze M, Ljungman CEA, Merkely B, Nicolau JC, O'Meara E, Petrie MC, Vinh PN, Schou M, Tereshchenko S, Verma S, Held C, DeMets DL, Docherty KF, Jhund PS, Bengtsson O, Sjöstrand M, Langkilde AM; DAPA-HF Trial Committees and Investigators. Dapagliflozin in patients with heart failure and reduced ejection fraction. *N Engl J Med* 2019;381:1995-2008.
  17. Packer M, Anker SD, Butler J, Filippatos G, Pocock SJ, Carson P, Januzzi J, Verma S, Tsutsui H, Brueckmann M, Jamal W, Kimura K, Schnee J, Zeller C, Cotton D, Bocchi E, Böhm



M, Choi DJ, Chopra V, Chuquiure E, Giannetti N, Janssens S, Zhang J, Gonzalez Juanatey JR, Kaul S, Brunner-La Rocca HP, Merkely B, Nicholls SJ, Perrone S, Pina I, Ponikowski P, Sattar N, Senni M, Seronde MF, Spinar J, Squire I, Taddei S, Wanner C, Zannad F; EMPEROR-Reduced Trial Investigators. Cardiovascular and renal outcomes with empagliflozin in heart failure. *N Engl J Med* 2020;383:1413-1424.

18. Anker SD, Butler J, Filippatos G, Ferreira JP, Bocchi E, Böhm M, Brunner-La Rocca HP, Choi DJ, Chopra V, Chuquiure-Valenzuela E, Giannetti N, Gomez-Mesa JE, Janssens S, Januzzi JL, Gonzalez-Juanatey JR, Merkely B, Nicholls SJ, Perrone SV, Piña IL, Ponikowski P, Senni M, Sim D, Spinar J, Squire I, Taddei S, Tsutsui H, Verma S, Vinereanu D, Zhang J, Carson P, Lam CSP, Marx N, Zeller C, Sattar N, Jamal W, Schnaidt S, Schnee JM, Brueckmann M, Pocock SJ, Zannad F, Packer M; EMPEROR-Preserved Trial Investigators. Empagliflozin in heart failure with a preserved ejection fraction. *N Engl J Med* 2021;385:1451-1461.

19. Anker SD, Butler J, Filippatos G, Shahzeb Khan M, Ferreira JP, Bocchi E, Böhm M, Brunner-La Rocca HP, Choi DJ, Chopra V, Chuquiure E, Giannetti N, Gomez-Mesa JE, Janssens S, Januzzi JL, Gonzalez-Juanatey JR, Merkely B, Nicholls SJ, Perrone SV, Piña IL, Ponikowski P, Senni M, Seronde MF, Sim D, Spinar J, Squire I, Taddei S, Tsutsui H, Verma S, Vinereanu D, Zhang J, Jamal W, Schnaidt S, Schnee JM, Brueckmann M, Pocock SJ, Zannad F, Packer M; EMPEROR-Preserved Trial Committees and Investigators. Baseline characteristics of patients with heart failure with preserved ejection fraction in the EMPEROR-Preserved trial. *Eur J Heart Fail* 2020;22:2383-2392.

20. Møller S, Bernardi M. Interactions of the heart and the liver. *Eur Heart J* 2013;34:2804-2811.

21. Xanthopoulos A, Starling RC, Kitai T, Triposkiadis F. Heart failure and liver disease: cardiohepatic interactions. *JACC Heart Fail* 2019;7:87-97.

22. Suzuki K, Claggett B, Minamisawa M, Packer M, Zile MR, Rouleau J, Swedberg K, Lefkowitz M, Shi V, McMurray JJV, Zucker SD, Solomon SD. Liver function and prognosis, and influence of sacubitril/valsartan in patients with heart failure with reduced ejection fraction. *Eur J Heart Fail* 2020;22:1662-1671.

23. Allen LA, Felker GM, Pocock S, McMurray JJ, Pfeffer MA, Swedberg K, Wang D, Yusuf S, Michelson EL, Granger CB; CHARM Investigators. Liver function abnormalities and outcome in patients with chronic heart failure: data from the Candesartan in Heart Failure: Assessment of Reduction in Mortality and Morbidity (CHARM) program. *Eur J Heart Fail* 2009;11:170-177.

24. van Deursen VM, Damman K, Hillege HL, van Beek AP, van Veldhuisen DJ, Voors AA. Abnormal liver function in relation to hemodynamic profile in heart failure patients. *J Card Fail* 2010;16:84-90.

25. Kubo SH, Walter BA, John DH, Clark M, Cody RJ. Liver function abnormalities in chronic heart failure. Influence of systemic hemodynamics. *Arch Intern Med* 1987;147:1227-1230.

26. Omar M, Jensen J, Frederiksen PH, Kistorp C, Videbæk L, Poulsen MK, Möller S, Ali M, Gustafsson F, Køber L, Borlaug BA, Schou M, Møller JE. Effect of empagliflozin on hemodynamics in patients with heart failure and reduced ejection fraction. *J Am Coll Cardiol* 2020;76:2740-2751.
27. Ambrosy AP, Dunn TP, Heidenreich PA. Effect of minor liver function test abnormalities and values within the normal range on survival in heart failure. *Am J Cardiol* 2015;115:938-941.
28. Wagner KH, Shiels RG, Lang CA, Seyed Khoei N, Bulmer AC. Diagnostic criteria and contributors to Gilbert's syndrome. *Crit Rev Clin Lab Sci* 2018;55:129-139.
29. Vitek L, Jirsa M, Brodanová M, Kalab M, Marecek Z, Danzig V, Novotný L, Kotal P. Gilbert syndrome and ischemic heart disease: a protective effect of elevated bilirubin levels. *Atherosclerosis* 2002;160:449-456.
30. Krawczyk M, Böhm M. The 50 shades of bilirubin. Letter regarding the article 'Liver tests and outcomes in heart failure with reduced ejection fraction: findings from DAPA-HF'. *Eur J Heart Fail* 2022;24:2206.
31. Januzzi JL Jr, Zannad F, Anker SD, Butler J, Filippatos G, Pocock SJ, Ferreira JP, Sattar N, Verma S, Vedin O, Schnee J, Iwata T, Cotton D, Packer M; EMPEROR-Reduced Trial Committees and Investigators. Prognostic importance of NT-proBNP and effect of empagliflozin in the EMPEROR-Reduced Trial. *J Am Coll Cardiol* 2021;78:1321-1332.
32. Butt JH, Adamson C, Docherty KF, de Boer RA, Petrie MC, Inzucchi SE, Kosiborod MN, Maria Langkilde A, Lindholm D, Martinez FA, Bengtsson O, Schou M, O'Meara E, Ponikowski P, Sabatine MS, Sjöstrand M, Solomon SD, Jhund PS, McMurray JJV, Køber L. Efficacy and safety of dapagliflozin in heart failure with reduced ejection fraction according to N-terminal pro-B-type natriuretic peptide: Insights from the DAPA-HF trial. *Circ Heart Fail* 2021;14:e008837.

## Legends

### Figure 1

Hazard ratio for the primary outcome within placebo according to tertiles (above) and groups of upper (ULN) and lower or normal values (below) for alkaline phosphatase (A), albumin (B – only tertiles), bilirubin (C), aspartate transaminase (AST) (D) and aspartate-leucine transaminase (ALT) (E).

T: tertiles; LLN : lower limit normal ; ULN: upper limit normal.

### Figure 2

Outcome according to alkaline phosphatase (A), albumin (B), bilirubin (C), AST (D), ALT (E) as continuous variable. Hazard ratios for the primary endpoint (cardiovascular death and heart failure hospitalization) within placebo are given according to the above mentioned parameters (reference (HR=1) at T1).

Normal ranges:

Alanine Aminotransferase [U/L]: 0 – 33 (F), 0-41 (M)

Aspartate Aminotransferase [U/L]: 0 – 31 (F), 0-37 (M)

Total Bilirubin [mg/dL]: 0.298197 – 1.2 or 1.22787 (F and M)

Alkaline Phosphatase [U/L]: 35 – 104 (F), 400 – 129 (M)

Albumin [g/dL]: 3.5 – 5.2 (F and M)

CI: confidence interval; U/L: units/liter ; T: tertiles, F : Females, M : Males

### Figure 3

Hazard ratio for the primary outcome (A), first hospitalization for heart failure (B), all-cause death (C) and cardiovascular death (D) for patients with normal bilirubin levels and increased bilirubin levels separated by a Gilbert-like constellation (increase of unconjugated bilirubin) within placebo.

### Figure 4

Change from baseline (upper panels) and absolute values (lower panels) for alkaline phosphatase (A), albumin (B), bilirubin (C), aspartate transaminase (AST) (D) and aspartate-leucine transaminase (ALT) (E).

### Figure 5

Hazard ratio for the treatment effect of empagliflozin according to tertiles (above) and groups of upper (ULN) and lower or normal values (below) of alkaline phosphatase (A), albumin (B), bilirubin (C), aspartate transaminase (AST) (D), aspartate-leucine transaminase (ALT) (E) and according to tertiles (above).

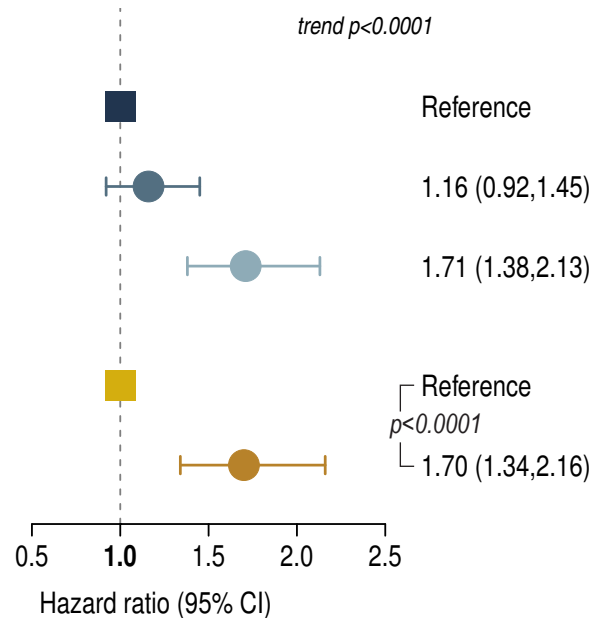
ULN: upper limit normal; T: tertiles

### Figure 6

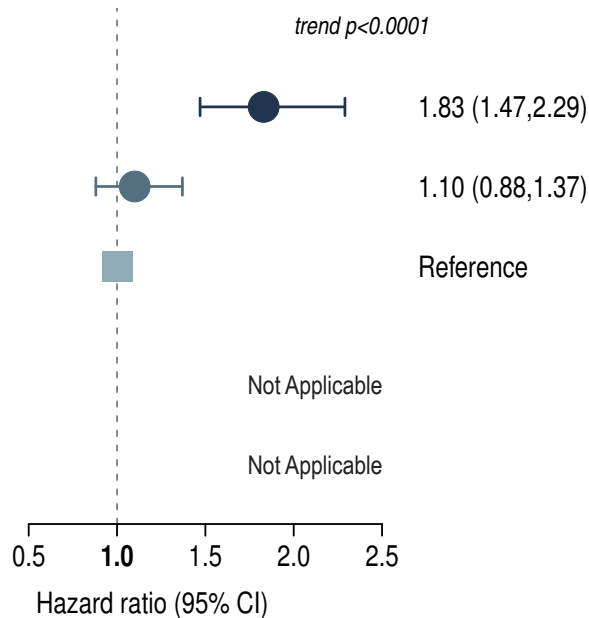
Hazard ratio for the treatment effect of empagliflozin for patients with normal bilirubin levels and increase bilirubin levels separated by Gilbert-like constellation for the primary endpoint (A), first HHF (B), all-cause death (C) and CVD (D).

Figure 1 Time to first HHF or CV Death on Placebo

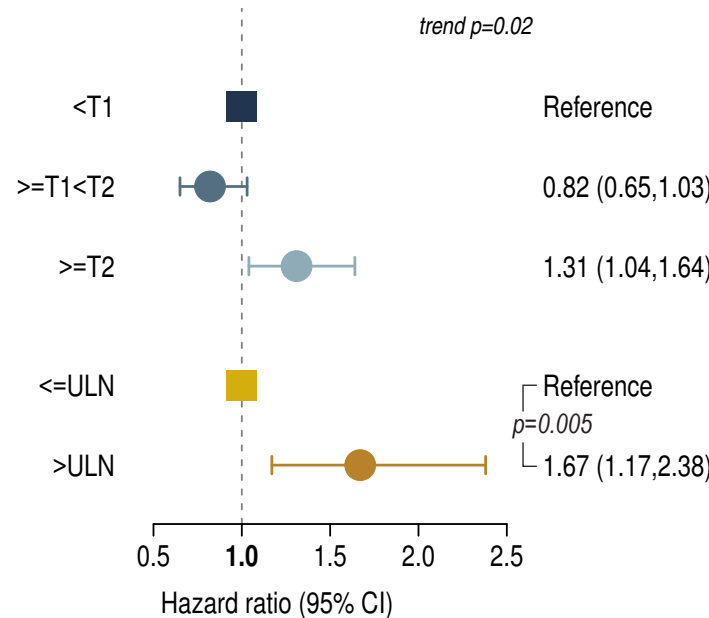
**A Alkaline Phosphatase**



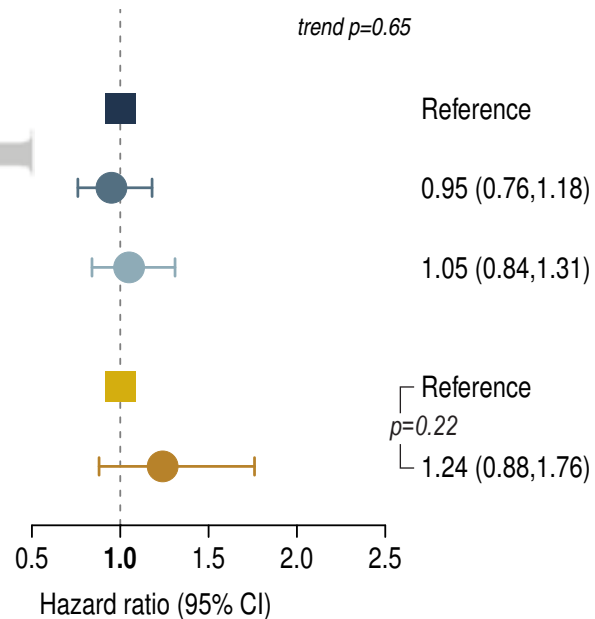
**B Albumin**



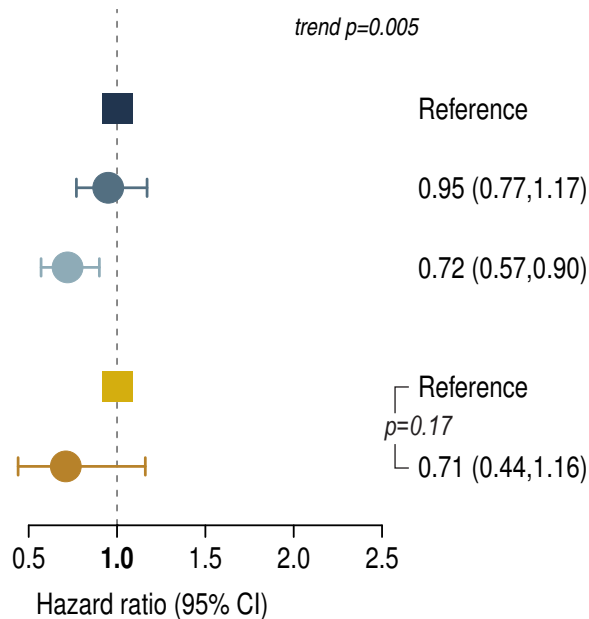
**C Bilirubin**



**D AST**



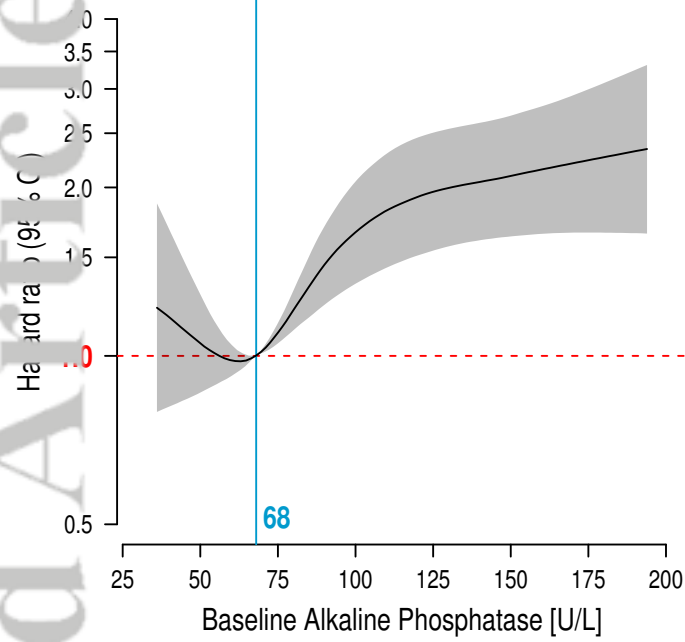
**E ALT**



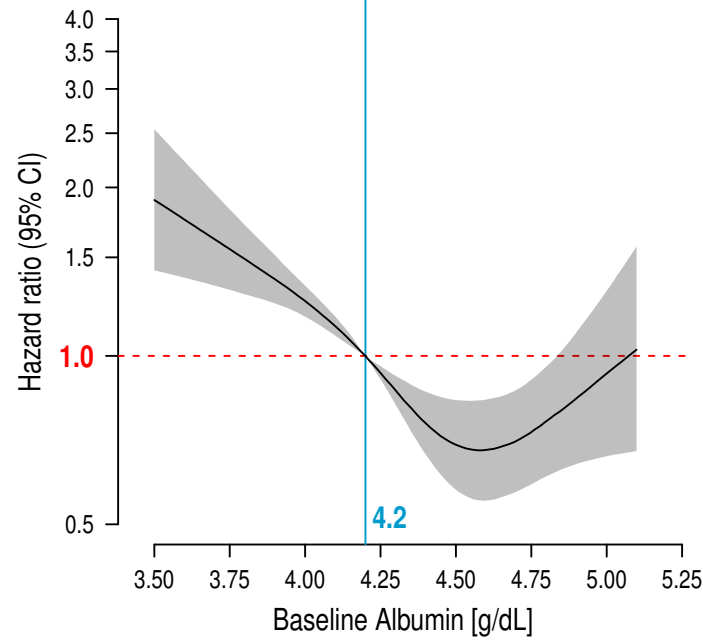
Accepted Article

Figure 2: Primary outcome (first heart failure hospitalization or CV-death) on placebo

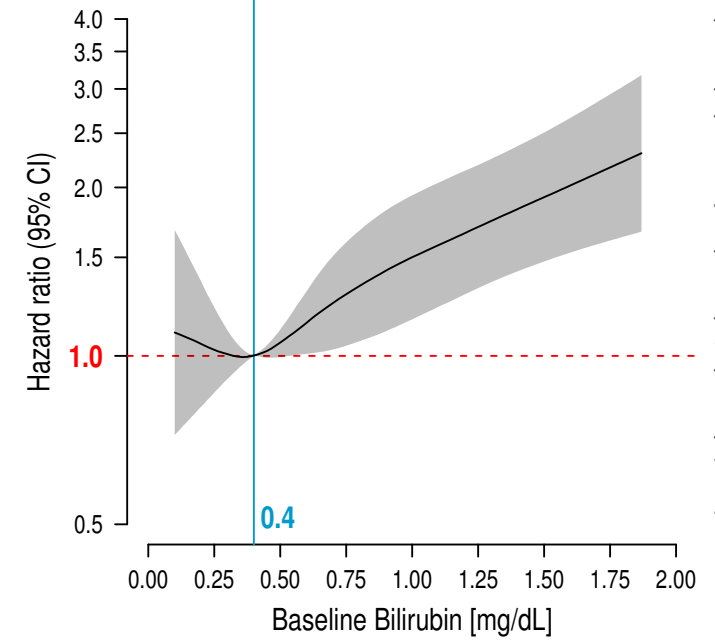
**A Alkaline Phosphatase**



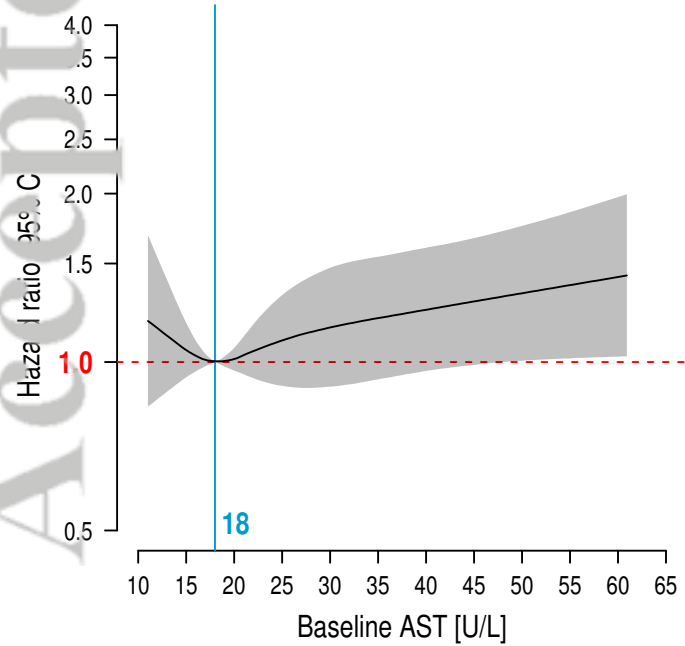
**B Albumin**



**C Bilirubin**



**D AST**



**E ALT**

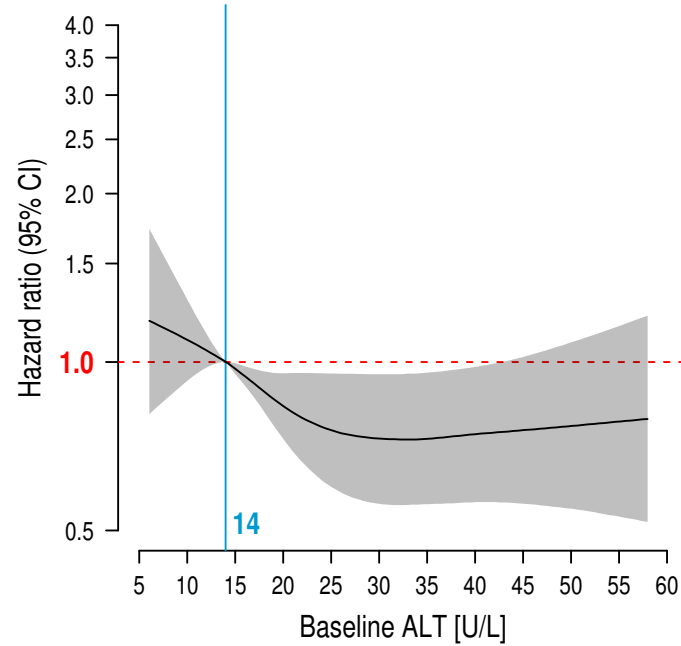
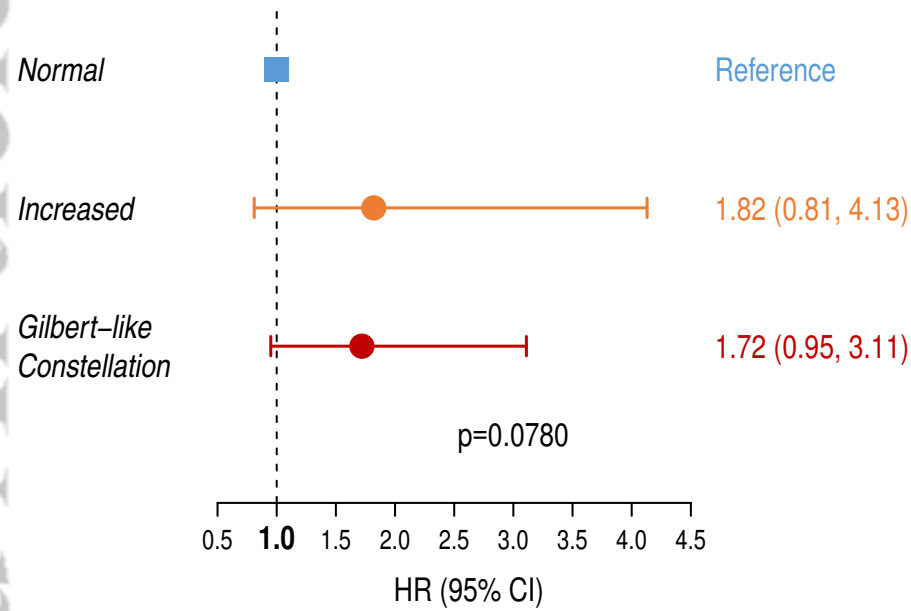
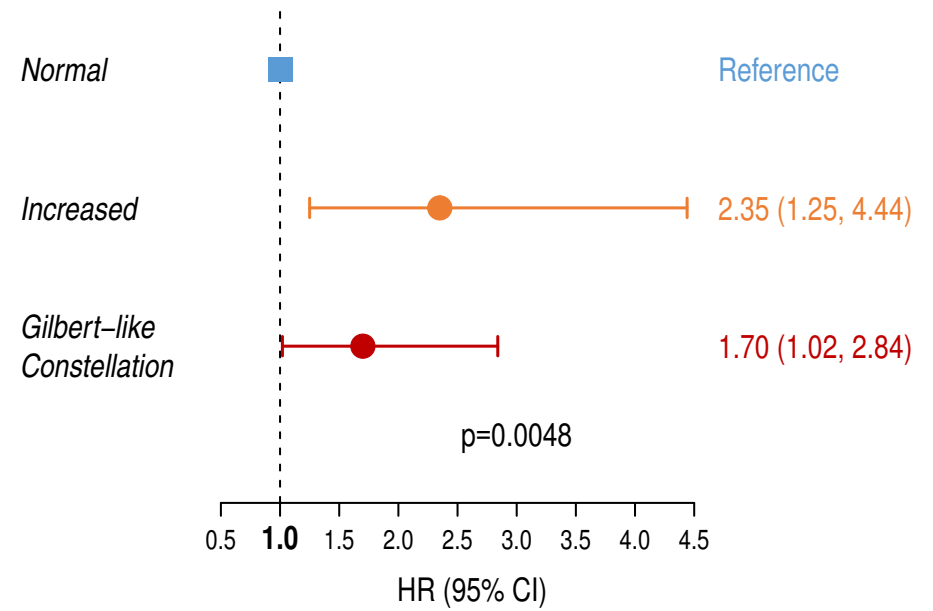


Figure 3

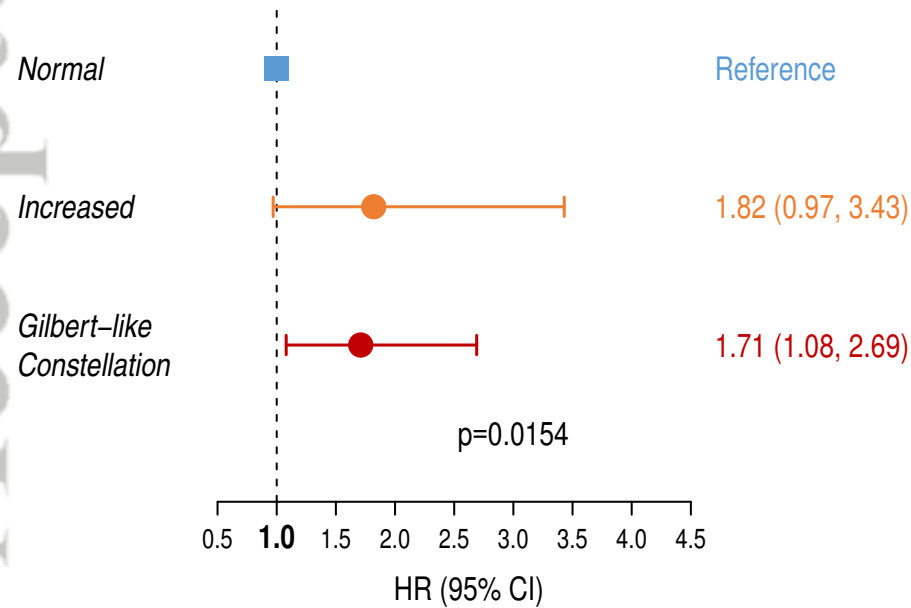
### D Cardiovascular Death



### B First Hospitalization for Heart Failure



### C All-Cause Death



### D Cardiovascular Death

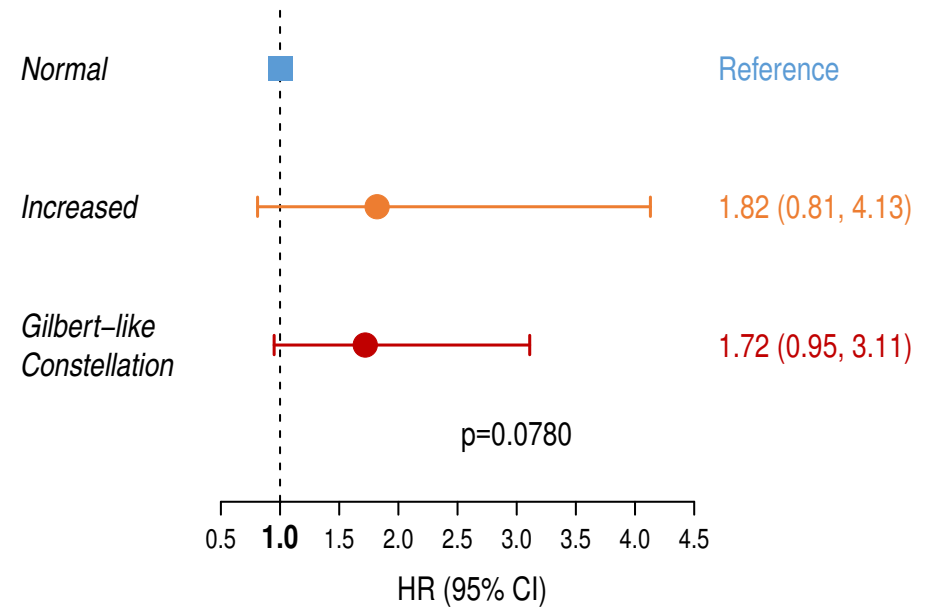
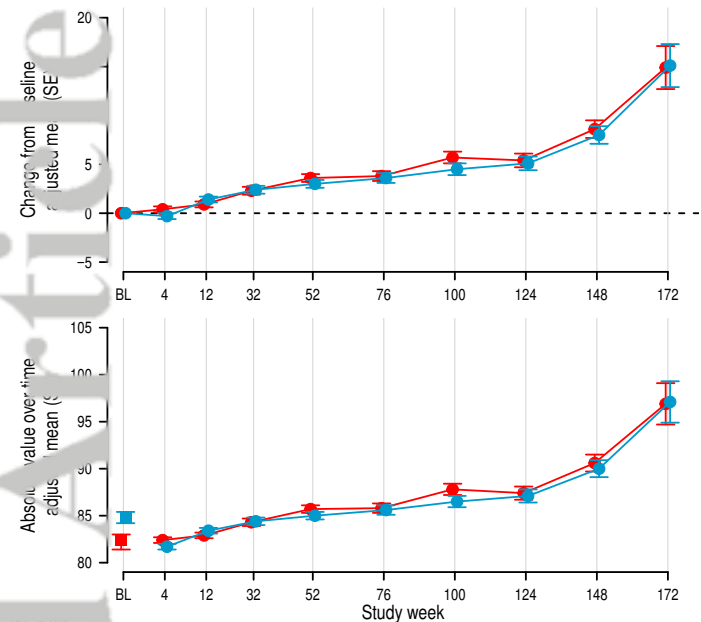


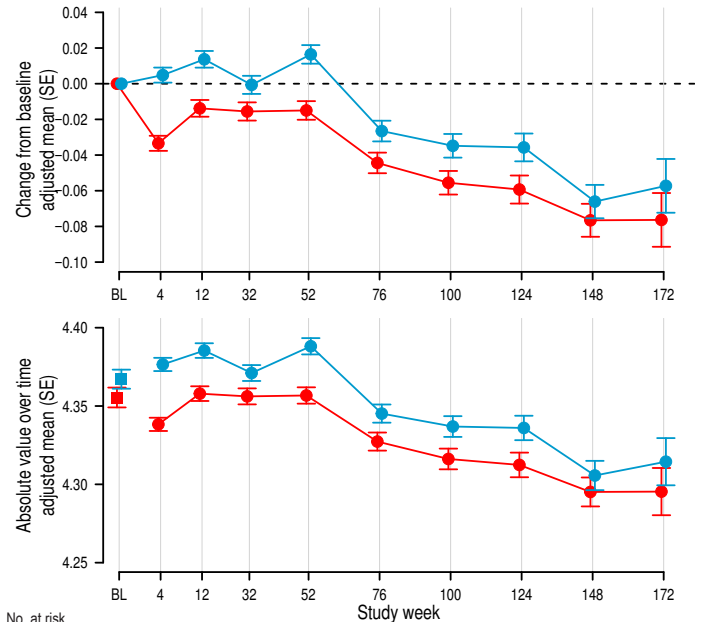
Figure 4 Change from baseline and absolute value

**A Alkaline Phosphatase [U/L]**



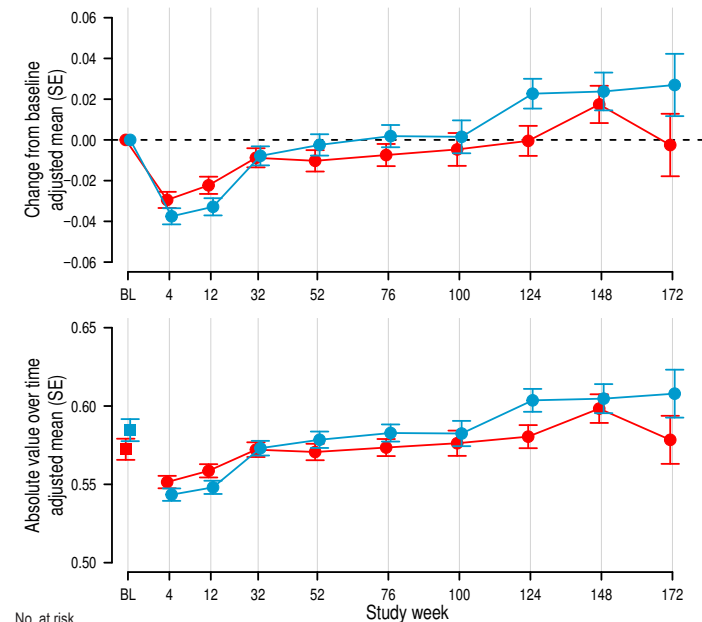
No. at risk	BL	4	12	32	52	76	100	124	148	172
Placebo	2912	2887	2760	2488	2332	1996	1442	1015	641	209
Empa 10mg	2926	2893	2784	2523	2344	1968	1433	1043	620	212

**B Albumin [g/dL]**



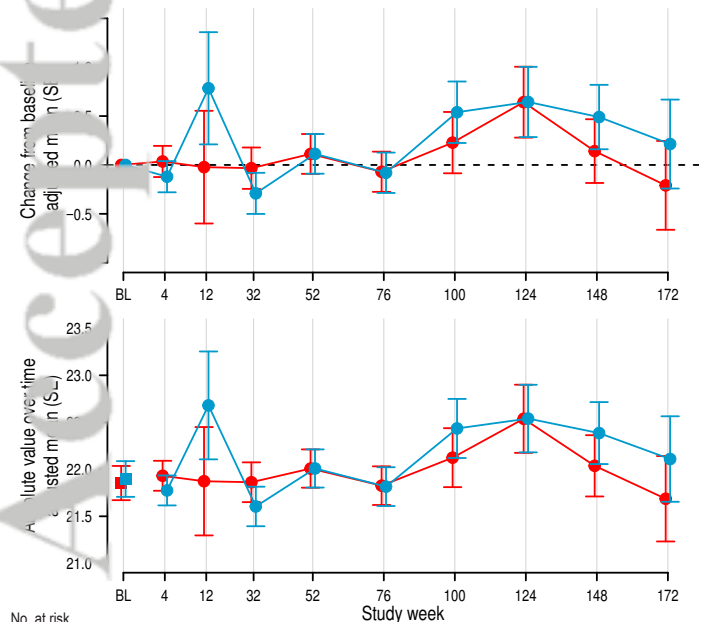
No. at risk	BL	4	12	32	52	76	100	124	148	172
Placebo	2886	2863	2735	2467	2312	1979	1435	1013	639	212
Empa 10mg	2900	2868	2759	2501	2322	1958	1428	1037	620	213

**C Bilirubin [mg/dL]**



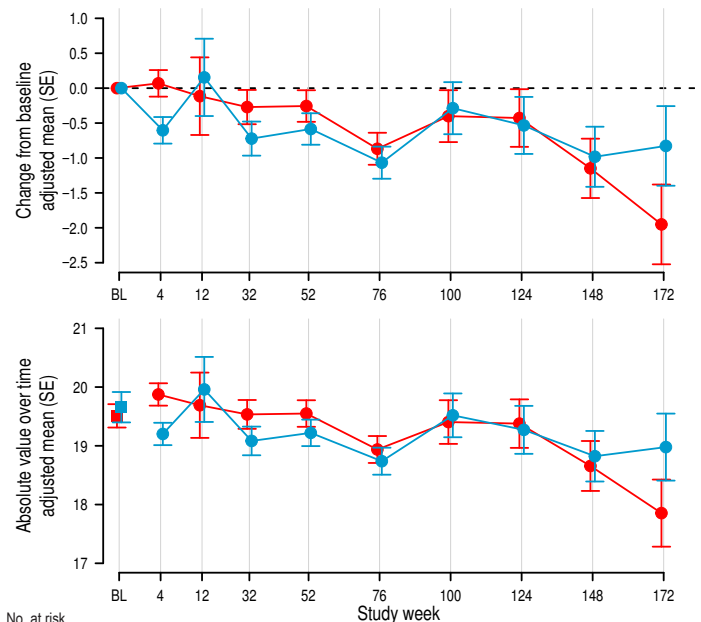
No. at risk	BL	4	12	32	52	76	100	124	148	172
Placebo	2880	2851	2729	2462	2302	1965	1421	1003	630	207
Empa 10mg	2892	2854	2748	2489	2312	1940	1415	1028	607	208

**D AST [U/L]**



No. at risk	BL	4	12	32	52	76	100	124	148	172
Placebo	2912	2884	2758	2481	2327	1984	1431	1009	630	206
Empa 10mg	2927	2887	2783	2519	2338	1951	1423	1030	609	206

**E ALT [U/L]**

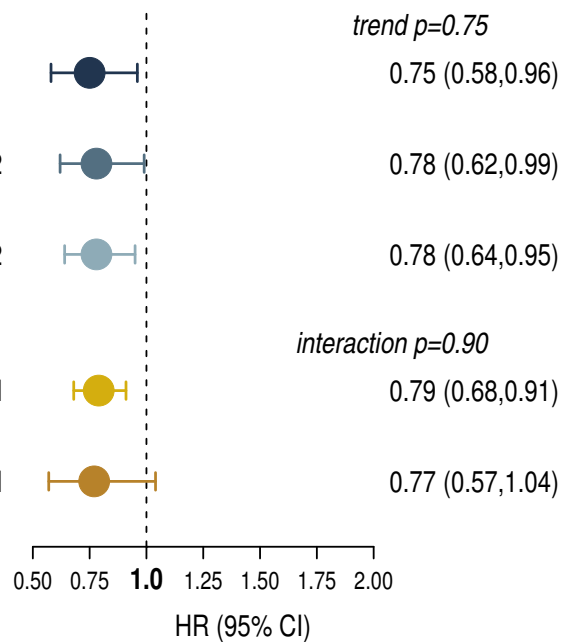


No. at risk	BL	4	12	32	52	76	100	124	148	172
Placebo	2912	2885	2760	2485	2331	1987	1438	1012	636	208
Empa 10mg	2928	2890	2782	2520	2341	1961	1429	1039	617	211

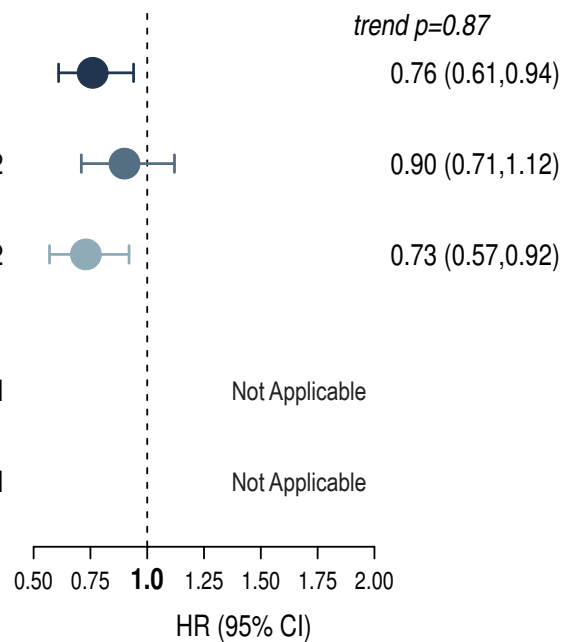
● Placebo  
● Empa 10mg

Figure 5 Treatment comparison

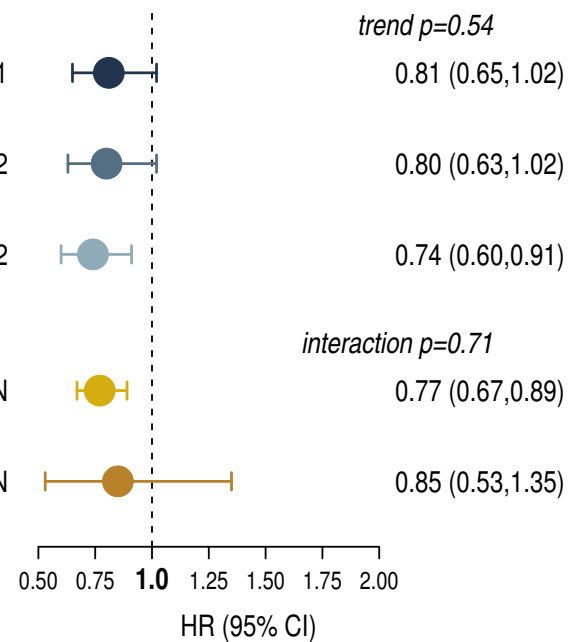
**A Alkaline Phosphatase**



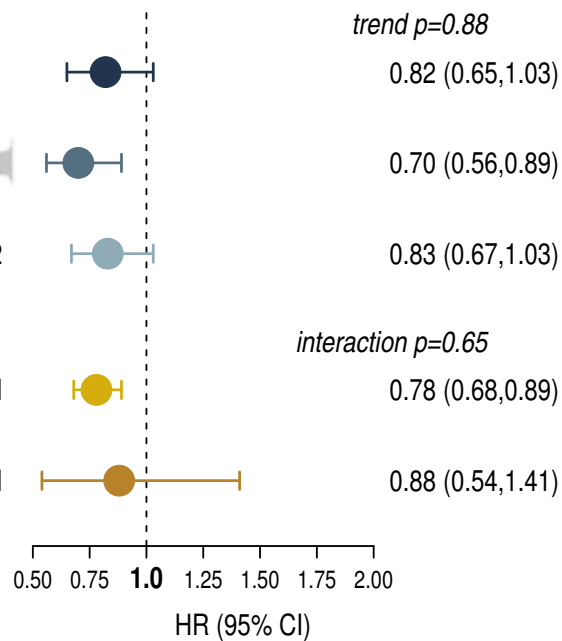
**B Albumin**



**C Bilirubin**



**D AST**



**E ALT**

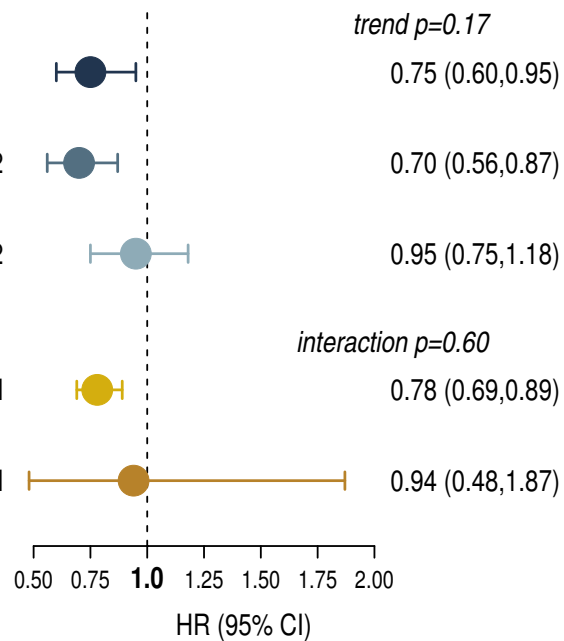
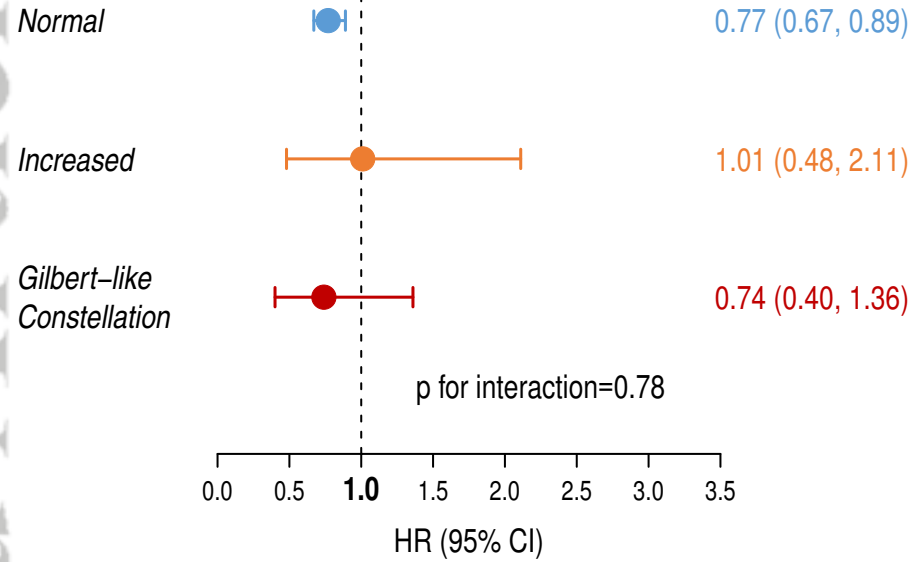


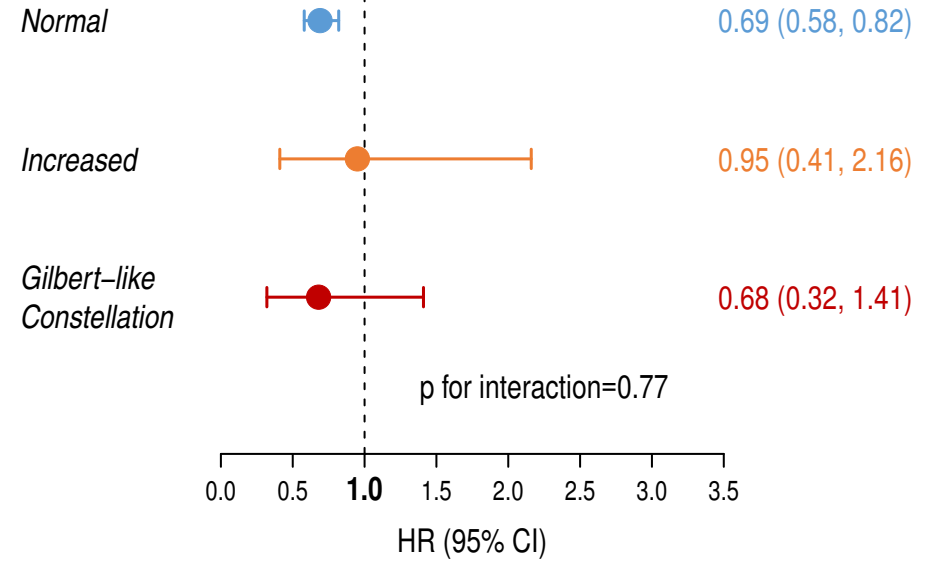


Figure 6

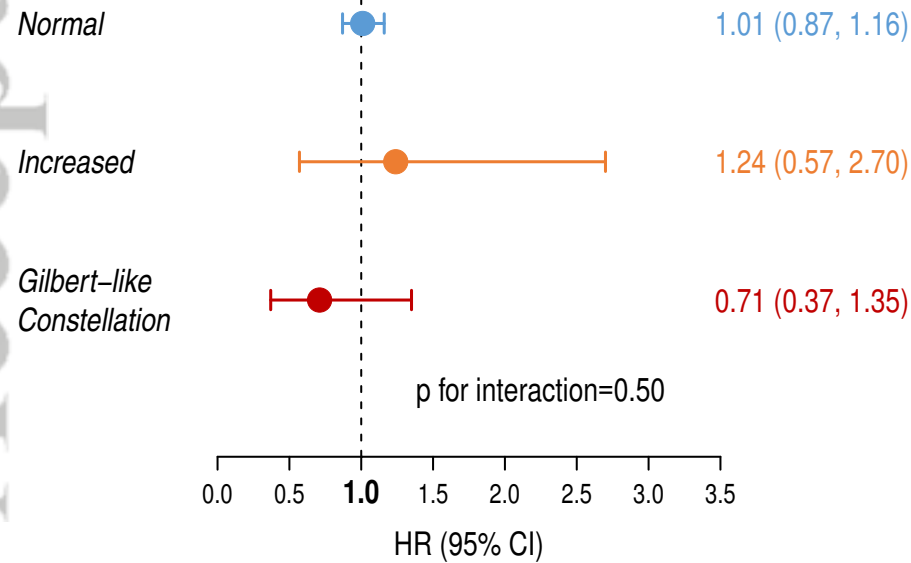
### A Primary Endpoint



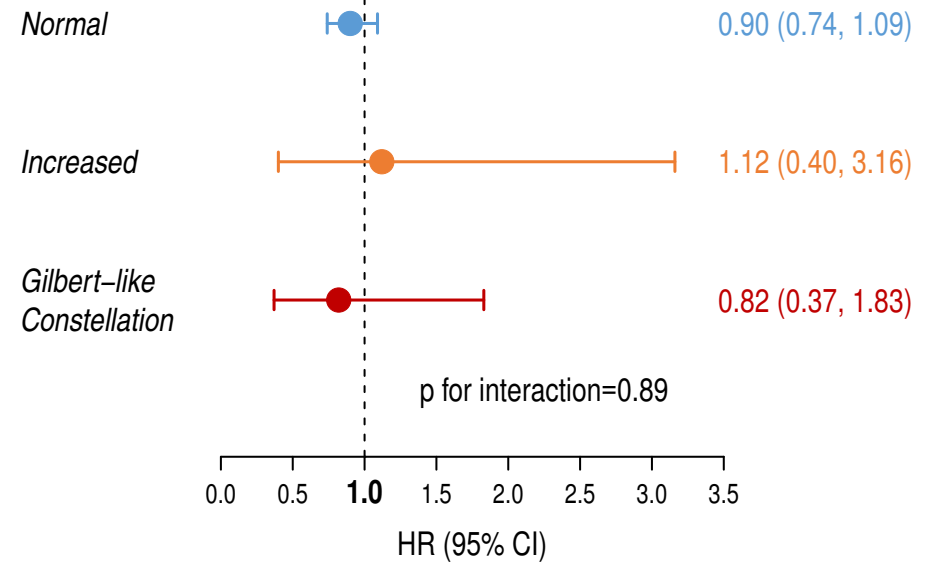
### B First Hospitalization for Heart Failure



### C All-Cause Death

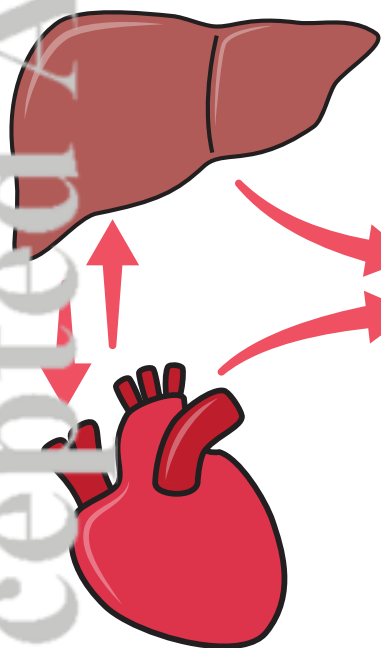


### D Cardiovascular Death



### Aim

To study associations of liver tests on outcomes in HFpEF and their interaction with treatment effects of empagliflozin.



- Congestion
- Neuroendocrine activation
- Inflammation

### Conclusion

Liver tests associated with outcome, but empagliflozin treatment effects are unaffected.

### Outcome Effects (Placebo)

### Treatment Effects (Placebo vs. Empagliflozin)

