



**HAL**  
open science

## Lung ultrasound and diuretic therapy in chronic heart failure: a randomised trial

Marli Cruz, João Pedro Ferreira, Silvia O Diaz, Diana Ferrão, Ana Isabel Ferreira, Nicolas Girerd, Francisco Sampaio, Joana Pimenta

### ► To cite this version:

Marli Cruz, João Pedro Ferreira, Silvia O Diaz, Diana Ferrão, Ana Isabel Ferreira, et al.. Lung ultrasound and diuretic therapy in chronic heart failure: a randomised trial. *Clinical Research in Cardiology*, 2023, 10.1007/s00392-023-02238-9 . hal-04125751

**HAL Id: hal-04125751**

**<https://hal.univ-lorraine.fr/hal-04125751>**

Submitted on 12 Jun 2023

**HAL** is a multi-disciplinary open access archive for the deposit and dissemination of scientific research documents, whether they are published or not. The documents may come from teaching and research institutions in France or abroad, or from public or private research centers.

L'archive ouverte pluridisciplinaire **HAL**, est destinée au dépôt et à la diffusion de documents scientifiques de niveau recherche, publiés ou non, émanant des établissements d'enseignement et de recherche français ou étrangers, des laboratoires publics ou privés.

## **Lung ultrasound and diuretic therapy in chronic heart failure: a randomised trial**

Marli Cruz<sup>1,2</sup>; João Pedro Ferreira<sup>1,2,3</sup>; Sílvia O. Diaz<sup>1</sup>; Diana Ferrão<sup>4</sup>; Ana Isabel Ferreira<sup>4</sup>; Nicolas Girerd<sup>3</sup>; Francisco Sampaio<sup>5</sup>; Joana Pimenta<sup>1,2</sup>

<sup>1</sup> Cardiovascular R&D Centre - UnIC@RISE, Department of Physiology and Cardiothoracic Surgery, Faculty of Medicine of the University of Porto, Porto, Portugal.

<sup>2</sup> Internal Medicine Department, Centro Hospitalar de Vila Nova de Gaia/Espinho, Vila Nova de Gaia, Portugal.

<sup>3</sup> Université de Lorraine, Inserm, Centre d'Investigation Clinique Plurithématique 1433, U1116, CHRU de Nancy, F-CRIN INI-CRCT, Nancy, France.

<sup>4</sup> Internal Medicine Department, Centro Hospitalar de São João, Porto, Portugal.

<sup>5</sup> Cardiology Department, Centro Hospitalar de Vila Nova de Gaia/Espinho, Vila Nova de Gaia, Portugal.

Contact to:

Dr Marli Cruz

Internal Medicine Department, Centro Hospitalar de Vila Nova de Gaia/Espinho, Vila Nova de Gaia, Portugal.

E-mail: smfc2@hotmail.com

## **Abstract**

*Background:* Lung congestion is frequent in heart failure (HF) and is associated with symptoms and poor prognosis. Lung ultrasound (LUS) identification of B-lines may help refining congestion assessment on top of usual care. Three small trials comparing LUS-guided therapy to usual care in HF suggested that LUS-guided therapy could reduce urgent HF visits. However, to our knowledge, the usefulness of LUS in influencing loop diuretic dose adjustment in ambulatory chronic HF has not been studied.

*Aims:* To study whether to show or not LUS results to the HF assistant physician would change loop diuretic adjustments in “stable” chronic ambulatory HF patients.

*Methods:* Prospective randomised single-blinded trial comparing two strategies: 1) open 8-zone LUS with B-line results available to clinicians, or 2) blind LUS. The primary outcome was change in loop diuretic dose (up- or down-titration).

*Results:* A total of 139 patients entered the trial, 70 were randomised to blind LUS and 69 to open LUS. The median (percentile<sub>25-75</sub>) age was 72 (63-82) years, 82 (62%) were men, and the median LVEF was 39 (31-51) %. Randomisation groups were well balanced. Furosemide dose changes (up- and down-titration) were more frequent among patients in whom LUS results were open to the assistant physician: 13 (18.6%) in blind LUS vs. 22 (31.9%) in open LUS, OR 2.55, 95%CI 1.07 to 6.06. Furosemide dose changes (up- and down-titration) were more frequent and correlated significantly with the number of B-lines when LUS results were open (Rho =0.30, P =0.014), but not when LUS results were blinded (Rho =0.19, P =0.13). Compared to blind LUS, when LUS results were open, clinicians were more likely to up-titrate furosemide dose if the result “presence of pulmonary congestion” was identified and more likely to decrease furosemide dose in the case of an “absence of pulmonary

congestion” result. The risk of HF events or cardiovascular death did not differ by randomisation group: 8 (11.4%) in blind LUS vs. 8 (11.6%) in open LUS.

*Conclusions:* Showing the results of LUS B-lines to assistant physicians allowed more frequent loop diuretic changes (both up- and down-titration), which suggests that LUS may be used to tailor diuretic therapy to each patient congestion status.

*Key-words:* Cardiovascular diseases; Heart failure; Cardiac edema; Lung ultrasound; Congestion.

## Introduction

Lung congestion is frequently present in patients with heart failure (HF) and is associated with severe symptoms, poor quality of life and adverse outcomes.<sup>1-3</sup> In routine outpatient clinical practice the assessment of lung congestion is often performed using symptoms questionnaire and pulmonary auscultation. These methods lack sensitivity and specificity for correctly quantifying lung congestion and, consequently, under- and over-treatment may occur, particularly regarding diuretic adjustment.<sup>4,5</sup>

Lung ultrasound (LUS) has emerged as a sensitive, specific and quantitative tool for the assessment of pulmonary congestion in HF, by allowing the identification of B-lines (i.e., echogenic lung artefacts arising vertically from the pleural surface) in several zones of the chest.<sup>1,6</sup> Pulmonary congestion identified by LUS is correlated with increased filling pressures in the heart and has shown strong prognostic value in acute and chronic HF.<sup>1,3,7,8</sup>

Three small trials comparing LUS-guided therapy to usual care in HF suggested that LUS-guided therapy could lead to a reduction in urgent HF visits.<sup>9-13</sup> Loop diuretic doses were generally higher in the LUS-guided group, without differences in other HF evidence-based medications.<sup>9,10,12</sup> Only one of these trials was performed in ambulatory chronic HF patients,<sup>12</sup> and none of these trials specifically addressed if changes in diuretic therapy were tailored to patient's congestion status as provided by LUS results.<sup>9,10,12</sup>

Diuretic therapy tailored to patient's congestion status is important to provide symptomatic relief while avoiding unnecessary side-effects even in ambulatory HF patients with mild or no symptoms. If congestion is not adequately managed these

patients may become more symptomatic and their risk of being hospitalized and dying increases.<sup>14</sup> In this regard, we designed a prospective randomised single-blinded trial to specifically address whether to show or not LUS results to the assistant physician in the ambulatory HF clinic would change loop diuretic adjustments (up- and down-titration) in “stable” chronic HF patients.

## **Methods**

### **Trial design**

This was a prospective, randomised, single-centre, single-blinded trial performed at the HF clinics of the *Centro Hospitalar de São João*, Porto, Portugal. The HF clinics appointment was performed as part of routine medical evaluation.

From July 2020 until November 2021 patients who signed informed consent and who met inclusion criteria (see below) entered the study.

The protocol was approved by the ethics committee of the study institution and the study was conducted in accordance with the principles of the Declaration of Helsinki.

Written informed consent was obtained from all patients prior to randomisation.

Randomisation was performed using a computer-generated number sequence i.e., patients attending clinics on a given day would have their LUS results open or blind to the assistant physician according to randomisation allocation.

No patient refused to participate in the study.

### **Study population**

Patients could enter the study if they were older than 18 years, had signed informed consent and were compliant with HF therapy for at least 3 months.

Patients were excluded if they had a concomitant respiratory infection, severe chronic obstructive pulmonary disease, interstitial lung disease or were on chronic dialysis.

### **Study procedures**

Routine clinical evaluation with detailed clinical history and physical examination was performed in all patients by the respective assistant physicians. LUS was performed by the first author (M. C.) in all randomised patients before the appointment with their assistant physician using an ultrasound device (GE<sup>®</sup>, Vivid T9 v203, cardiac probe), following international recommendations.<sup>15</sup> LUS (**Supplementary Figures 1a-c**) was recorded in 8 thoracic sites (4 sites in each hemithorax) with the transducer in sagittal orientation and at 18-cm imaging depth with the patient in the semi-recumbent position.<sup>15</sup> The number of B-lines reported was the sum of the B-lines visualized in each thoracic site. The presence of pleural effusion was also recorded. Images were evaluated and B-line quantified in real time. A positive area was considered when  $\geq 3$  B-lines were present and pulmonary congestion was considered present if the patient had  $\geq 1$  positive areas bilaterally or pleural effusion.<sup>15</sup>

According to randomisation allocation, patients were allocated to either: 1) open LUS results with written information presented as “presence of pulmonary congestion” or “absence of pulmonary congestion” provided by M. C. to the assistant physician before the appointment at the outpatient HF clinic (i.e., before the patient entered the room); or 2) blind LUS results without any information given to the assistant physician.

No guidance regarding treatment was provided and the treatment to be adopted was left at the discretion of the treating physician.

Additionally, all patients collected baseline data on left ventricular ejection fraction (LVEF), and laboratory data including B-type natriuretic peptide value (BNP), hemoglobin, creatinine, urea, and electrolytes (we used the last available information before performing LUS).

### **Study outcomes**

The primary outcome was the change in loop diuretic (only furosemide was used) dose from before to after the outpatient HF clinic appointment i.e., up- or down-titration of furosemide.

Secondary outcomes included changes in other HF medications, including up-titration of angiotensin converting enzyme inhibitors (ACEi), angiotensin receptor blockers (ARBs), angiotensin receptor neprilysin inhibitor (ARNI), and beta-blockers to  $\geq 50\%$  of the target dose,<sup>16,17</sup> initiation of spironolactone (any dose), and sodium glucose co-transporter 2 inhibitors (SGLT2i, any dose).

A composite outcome of urgent emergency room (ER) visit for worsening HF, HF hospitalisation or cardiovascular mortality was also analysed.

### **Statistical procedures**

Our primary hypothesis was that having open LUS results would lead to twice more changes in furosemide dose (either up- or down-titration) than having blind LUS results. The estimated sample size was 140 patients, with a power of 80% and 5% alpha, to detect a doubling in furosemide dose changes, from an estimated proportion of change of 20% based on clinical history and physical examination alone to more than 40% when adding LUS. Patient's characteristics were described by randomisation group (blind vs. open LUS) with categorical variables described using absolute numbers and proportions (%) and continuous variables using medians and



25-75<sup>th</sup> percentile. P-values were generated using Chi-square tests for categorical variables and Mann-Whitney tests for continuous variables. Despite this being a randomised trial, we opted to present P-values for comparison of randomised groups because the sample size was small which could have led to between-group imbalances. Furosemide changes were calculated by comparing the dose before the appointment to the dose after the appointment, and categorized as “decrease”, “stable”, or “increase”. Furosemide dose changes (any) were compared using a logistic regression model with furosemide change (yes vs. no) as dependent/outcome variable, randomisation group (open LUS vs. blind LUS) as independent variable, and age, sex, peripheral edema and pulmonary rales on auscultations as adjustment variables. HF-medication up-titration changes (yes vs. no) were studied using a similar logistic regression model adjusting on the same variables. These variables were chosen for adjustment as they could have influenced treatment decisions based on congestion assessment by clinical history and physical examination. Variables used in the models did not have missing values. Outcome associations were explored by means of an univariate Cox model. Spearman correlations were performed to explore the association between B-lines and clinical parameters. All analyses were performed using Stata® (StataCorp. 2021. Stata Statistical Software: Release 17. College Station, TX: StataCorp LLC). A two-sided P-value <0.05 was considered statistically significant. No adjustment for multiple comparisons was performed and all outcomes other than the primary should be regarded as exploratory.

## **Results**

### **Baseline patient’s characteristics by randomisation group**

A total of 139 patients entered the trial, 70 randomised to blind LUS and 69 to open LUS results. The median (percentile<sub>25-75</sub>) age was 72 (63-82) years, 82 (62%) were men, 61 (44%) had diabetes, 117 (87%) were on NYHA class I or II, 35 (25%) had rales on pulmonary auscultation, 37 (27%) had peripheral edema, and 37 (28%) had 3 or more bilateral B-lines on LUS. The median LVEF was 39 (31-51) %, median BNP was 150 (56-352) pg/mL, and the median eGFR was 62 (40-85) ml/min/1.73m<sup>2</sup>. Randomisation groups were well balanced overall, with exception of spironolactone use that was more frequent among patients randomised to open LUS results (28 [40%] vs. 41 [59%]) and thiazide diuretic use that was more frequent among patients randomised to blind LUS results (4 [6%] vs. 0). **Table 1.**

The detailed number of LUS B-lines within the 8 thoracic areas is described in **Supplementary Table 1.**

#### **Furosemide changes by randomisation group**

Furosemide dose changes (up- and down-titration) were more frequent among patients in whom LUS results were shown to their assistant physicians (i.e., open LUS results group): 13 (18.6%) in blind LUS vs. 22 (31.9%) in open LUS, OR 2.55, 95%CI 1.07 to 6.06. **Table 2 & Figure 1.**

Furosemide dose changes (up- and down-titration) were more frequent and correlated significantly with the number of B-lines when LUS results were open (Rho =0.30, P =0.014), but not when the assistant physician was blind to LUS results (Rho =0.19, P =0.13). When LUS results were open, clinicians were more likely to up-titrate furosemide dose if the result “presence of pulmonary congestion” was identified and more likely to decrease furosemide dose in the case of “absence of pulmonary congestion” results. Specifically, 9/19 (47.4%) of the patients with ≥3 B-

lines and open LUS results had furosemide dose increased vs. 3/18 (16.7%) with  $\geq 3$  B-lines and blind LUS results. Conversely, 9/50 (18.0%) with  $< 3$  B-lines and open LUS results had furosemide dose decreased vs. 1/52 (1.9%) with  $< 3$  B-lines and blind LUS results. **Supplementary Table 2 & Figure 2.**

### **HF medication changes and outcome events by randomisation group**

HF medication optimization did not significantly differ by randomisation group. Still, spironolactone initiation was more frequent among patients with open LUS results: 0 vs. 4 (5.8%). **Table 3.**

Median furosemide dose did not significantly change after LUS results. The full description of HF medications after LUS results are shown in the **Supplementary Table 3.**

Over a median follow-up time of 161 (92-268) days, outcome events (composite of ER visit, HF hospitalisation or cardiovascular death) did not differ by randomisation group: 8 (11.4%) in blind LUS vs. 8 (11.6%) in open LUS results. **Table 3.**

### **Correlation of B-lines with clinical characteristics and outcomes**

LUS B-lines were correlated with the presence of peripheral edema (Rho =0.42), rales (Rho =0.39), age (Rho =0.34 per 1 year older), NYHA class (Rho =0.22 per 1 NYHA class higher), and eGFR (Rho =0.20 per 1 ml/min/1.73m<sup>2</sup> lower eGFR).

### **Supplementary Table 4.**

The presence of 3 or more bilateral B-lines was associated with outcome events (composite of ER visit, HF hospitalisation or cardiovascular death): HR 3.03, 95%CI 1.04-8.81. **Supplementary Table 5.**

## **Discussion**

The results of this trial show that LUS B-lines help in tailoring diuretic therapy among patients with stable chronic HF, with more frequent ( $\approx 2.5$ -fold) furosemide changes (up- and down-titration) observed in patients with open LUS vs. blind LUS results. Assistant physicians were more likely to up-titrate furosemide dose if patients with presence of pulmonary congestion and more likely to down-titrate furosemide dose if patients had absence of pulmonary congestion when the results were available to them, but not when LUS results were blinded. Specifically, among patients with presence of pulmonary congestion (N=37), 47.4% (9/19) had furosemide dose increased when LUS results were open to HF clinicians vs. 16.7% (3/18) when LUS results were blinded. Conversely, among patients with absence of pulmonary congestion (N=102), 18.0% (9/50) had furosemide dose decreased when LUS results were open to HF clinicians vs. 1.9% (1/52) when LUS results were blinded. These findings were observed on top of clinical history and physical examination, whose measures (e.g., pulmonary rales, peripheral edema, NYHA class) were correlated with LUS B-lines. This supports LUS as a refinement tool for clinical decisions on top of usual care, particularly regarding the adaptation of diuretic therapy tailored to each patient's congestion status. Despite no major changes observed in other HF medications, spironolactone initiation was more frequent among patients with open LUS results. It is also worth noting that despite being only mildly symptomatic, nearly one-third of the patients had presence of pulmonary congestion on LUS, which has been associated with a poor prognosis,<sup>14,18</sup> including in our study. Having open LUS results did not have an impact on HF outcomes but this study was not powered for studying potential outcome effects. In fact, none of the trials performed to date were well powered to study the impact of LUS-guided therapy on HF outcomes.<sup>11</sup> Despite the limited power of our study for assessing

“hard” outcomes, the observation that no excess events were the open LUS group (where a higher percentage of patients had furosemide down-titration) is reassuring and suggests that such diuretic down-titration was adapted to the congestion status of the patient.

Our study is original because it included only ambulatory “stable” HF patients with mild symptoms and without any specific guidance regarding diuretic doses or other HF therapies provided to the assistant physicians, who were simply informed of the LUS results in the open arm of the trial. Marini C. *et al*,<sup>12</sup> also included 244 ambulatory HF patients with stable HF therapy and a LVEF <45% randomized to either LUS on top of physical examination or physical examination alone. The authors’ aim was to assess the impact of LUS on HF hospitalisations at 90 days of follow-up (37 events in total) assuming an event reduction of 50% or greater with LUS, and not on how LUS would be used to guide diuretic therapy. In the study by Marini C. *et al*, and in our study, loop diuretic doses were not different according to randomisation allocation.<sup>12</sup> The CLUSTER-HF<sup>9</sup> (N =126) and LUS-HF<sup>10</sup> (N =123) studies enrolled patients at hospital discharge to assess the impact of LUS on urgent HF visits and readmissions also assuming event reduction greater than 50% with LUS on a total of 89 primary events in both trials (50 events in CLUSTER-HF and 39 events in LUS-HF). In LUS-HF the mean loop diuretic dose increased in patients with more extensive B-lines but adjustments in furosemide doses (i.e., increases or decreases according to congestion status) were not different between LUS and usual care groups.<sup>10</sup> In CLUSTER-HF an increase in furosemide dose was observed only in the 6-week visit after randomisation.<sup>9</sup>

Adding to prior reports, our study shows that LUS can be used to tailor diuretic therapy directed to patient’s congestion status for which B-lines can help on top of

clinical history and physical examination. The finding that diuretic changes occurred more often and correlated with the presence of pulmonary congestion only in open LUS group, strongly supports the role of LUS for guiding diuretic strategies. We believe this finding is novel and clinically relevant. Pocket ultrasound devices will become widely available, and LUS may be integrated in routine practice as an extension of physical examination.<sup>3</sup>

Our results along with the other LUS trials are complementary to the findings from the CHAMPION (CardioMEMS Heart Sensor Allows Monitoring of Pressure to Improve Outcomes in NYHA Class III Heart Failure Patients) trial, showing an adaptation of diuretic therapy according to the volume status of each patient.<sup>19</sup>

Notwithstanding, LUS is inexpensive and non-invasive potentially allowing a more widespread, low-cost, no risk implementation than the CardioMEMS device.

Still, future adequately powered trials should assess whether the use of LUS may reduce HF hospitalisations and mortality and if so, which would be the putative mechanisms mediating the clinical benefit (e.g., a diuretic strategy more tailored to each patient needs?).

## **Limitations**

Some limitations should be acknowledged in this trial. This is a single centre study with only one person performing the LUS; hence, the generalisability of these results should be applied with caution. We did not collect follow-up data on natriuretic peptides, which could be informative as means to correlate natriuretic peptides changes with diuretic changes according to LUS results. Our study was only powered to assess diuretic changes and it was underpowered to study the impact of

LUS on “hard” outcomes (e.g., HF hospitalizations or renal failure). Future larger randomized studies could study whether using LUS to tailored diuretic therapy would impact HF outcomes.

### **Conclusions**

Showing LUS B-line results to the assistant physician allowed more frequent loop diuretic changes (both up- and down-titration), which suggest that LUS may be used as a refinement tool (on top of clinical history and physical examination) to tailor diuretic therapy adapted to each patient congestion status.

## **Funding**

SOD was financed by the European Regional Development Fund (ERDF), through the North Regional Operational Program in the framework of the project HEALTH-UNORTE: Setting-up biobanks and regenerative medicine strategies to boost research in cardiovascular, musculoskeletal, neurological, oncological, immunological and infectious diseases (reference NORTE-01-0145-FEDER-000039).

## **Disclosures**

The authors have nothing to disclose regarding the content of this work.

## **Acknowledgment**

Authors would like to thank the patients for their participation in this study and the assistant physicians who tolerated being blinded to a result that could change their attitudes towards the patient. Thank you.

## **Data sharing statement**

Data may be shared upon reasonable request to the corresponding author.



## References

1. Coiro S, Rossignol P, Ambrosio G, Carluccio E, Alunni G, Murrone A, Tritto I, Zannad F, Girerd N. Prognostic value of residual pulmonary congestion at discharge assessed by lung ultrasound imaging in heart failure. *Eur J Heart Fail.* 2015;17:1172-1181. doi: 10.1002/ejhf.344
2. Melenovsky V, Andersen MJ, Andress K, Reddy YN, Borlaug BA. Lung congestion in chronic heart failure: haemodynamic, clinical, and prognostic implications. *Eur J Heart Fail.* 2015;17:1161-1171. doi: 10.1002/ejhf.417
3. Girerd N, Seronde MF, Coiro S, Chouihed T, Bilbault P, Braun F, Kenizou D, Maillier B, Nazeyrollas P, Roul G, et al. Integrative Assessment of Congestion in Heart Failure Throughout the Patient Journey. *JACC Heart Fail.* 2018;6:273-285. doi: 10.1016/j.jchf.2017.09.023
4. Butler J, Gheorghiade M, Metra M. Moving away from symptoms-based heart failure treatment: misperceptions and real risks for patients with heart failure. *Eur J Heart Fail.* 2016;18:350-352. doi: 10.1002/ejhf.507
5. Stevenson LW, Perloff JK. The limited reliability of physical signs for estimating hemodynamics in chronic heart failure. *Jama.* 1989;261:884-888.
6. Pivetta E, Goffi A, Lupia E, Tizzani M, Porrino G, Ferreri E, Volpicelli G, Balzaretto P, Banderali A, Iacobucci A, et al. Lung Ultrasound-Implemented Diagnosis of Acute Decompensated Heart Failure in the ED: A SIMEU Multicenter Study. *Chest.* 2015;148:202-210. doi: 10.1378/chest.14-2608
7. Gustafsson M, Alehagen U, Johansson P. Imaging Congestion With a Pocket Ultrasound Device: Prognostic Implications in Patients With Chronic Heart Failure. *J Card Fail.* 2015;21:548-554. doi: 10.1016/j.cardfail.2015.02.004
8. Platz E, Lewis EF, Uno H, Peck J, Pivetta E, Merz AA, Hempel D, Wilson C, Frasure SE, Jhund PS, et al. Detection and prognostic value of pulmonary congestion by lung ultrasound in ambulatory heart failure patients. *Eur Heart J.* 2016;37:1244-1251. doi: 10.1093/eurheartj/ehv745
9. Araiza-Garaygordobil D, Gopar-Nieto R, Martinez-Amezcuca P, Cabello-López A, Alanis-Estrada G, Luna-Herbert A, González-Pacheco H, Paredes-Paucar CP, Sierra-Lara MD, Briseño-De la Cruz JL, et al. A randomized controlled trial of lung ultrasound-guided therapy in heart failure (CLUSTER-HF study). *Am Heart J.* 2020;227:31-39. doi: 10.1016/j.ahj.2020.06.003
10. Rivas-Lasarte M, Álvarez-García J, Fernández-Martínez J, Maestro A, López-López L, Solé-González E, Pirla MJ, Mesado N, Mirabet S, Fluvà P, et al. Lung ultrasound-guided treatment in ambulatory patients with heart failure: a randomized controlled clinical trial (LUS-HF study). *Eur J Heart Fail.* 2019;21:1605-1613. doi: 10.1002/ejhf.1604
11. Mhanna M, Beran A, Nazir S, Sajdeya O, Srour O, Ayesh H, Eltahawy EA. Lung ultrasound-guided management to reduce hospitalization in chronic heart failure: a systematic review and meta-analysis. *Heart Fail Rev.* 2022;27:821-826. doi: 10.1007/s10741-021-10085-x
12. Marini C, Fragasso G, Italia L, Sisakian H, Tufaro V, Ingallina G, Stella S, Ancona F, Loiacono F, Innelli P, et al. Lung ultrasound-guided therapy reduces acute decompensation events in chronic heart failure. *Heart.* 2020;106:1934-1939. doi: 10.1136/heartjnl-2019-316429
13. Rastogi T, Bozec E, Pellicori P, Bayes-Genis A, Coiro S, Domingo M, Gargani L, Palazzuoli A, Girerd N. Prognostic Value and Therapeutic Utility of Lung

- Ultrasound in Acute and Chronic Heart Failure: A Meta-Analysis. *JACC Cardiovasc Imaging*. 2022;15:950-952. doi: 10.1016/j.jcmg.2021.11.024
14. Platz E, Merz AA, Jhund PS, Vazir A, Campbell R, McMurray JJ. Dynamic changes and prognostic value of pulmonary congestion by lung ultrasound in acute and chronic heart failure: a systematic review. *Eur J Heart Fail*. 2017;19:1154-1163. doi: 10.1002/ejhf.839
  15. Volpicelli G, Elbarbary M, Blaivas M, Lichtenstein DA, Mathis G, Kirkpatrick AW, Melniker L, Gargani L, Noble VE, Via G, et al. International evidence-based recommendations for point-of-care lung ultrasound. *Intensive Care Med*. 2012;38:577-591. doi: 10.1007/s00134-012-2513-4
  16. McDonagh TA, Metra M, Adamo M, Gardner RS, Baumbach A, Böhm M, Burri H, Butler J, Čelutkienė J, Chioncel O, et al. 2021 ESC Guidelines for the diagnosis and treatment of acute and chronic heart failure. *Eur Heart J*. 2021;42:3599-3726. doi: 10.1093/eurheartj/ehab368
  17. Yancy CW, Jessup M, Bozkurt B, Butler J, Casey DE, Jr., Colvin MM, Drazner MH, Filippatos GS, Fonarow GC, Givertz MM, et al. 2017 ACC/AHA/HFSA Focused Update of the 2013 ACCF/AHA Guideline for the Management of Heart Failure: A Report of the American College of Cardiology/American Heart Association Task Force on Clinical Practice Guidelines and the Heart Failure Society of America. *J Am Coll Cardiol*. 2017;70:776-803. doi: 10.1016/j.jacc.2017.04.025
  18. Platz E, Campbell RT, Claggett B, Lewis EF, Groarke JD, Docherty KF, Lee MMY, Merz AA, Silverman M, Swamy V, et al. Lung Ultrasound in Acute Heart Failure: Prevalence of Pulmonary Congestion and Short- and Long-Term Outcomes. *JACC Heart Fail*. 2019;7:849-858. doi: 10.1016/j.jchf.2019.07.008
  19. Adamson PB, Abraham WT, Bourge RC, Costanzo MR, Hasan A, Yadav C, Henderson J, Cowart P, Stevenson LW. Wireless pulmonary artery pressure monitoring guides management to reduce decompensation in heart failure with preserved ejection fraction. *Circ Heart Fail*. 2014;7:935-944. doi: 10.1161/circheartfailure.113.001229

Table 1. Patient's characteristics by randomisation group

Characteristic	LUS blind	LUS open	P-value
N.	70	69	
Age, years	73 (62, 81)	72 (63, 82)	0.96
Men	40 (57%)	46 (67%)	0.25
Weight, Kg	73 (65, 84)	72 (63, 84)	0.92
BMI, Kg/m <sup>2</sup>	28.0 (25.0, 32.0)	27.5 (23.3, 30.0)	0.65
Hypertension	41 (59%)	41 (59%)	0.92
Diabetes	28 (40%)	33 (48%)	0.35
Dyslipidemia	27 (39%)	35 (51%)	0.15
COPD	12 (17%)	9 (13%)	0.50
Smoker	10 (14%)	12 (17%)	0.51
AFib/Flutter	32 (46%)	29 (42%)	0.66
Ischemic HF	23 (33%)	25 (36%)	0.68
Valvular disease	6 (9%)	8 (12%)	0.55
NYHA I/II	57 (85%)	60 (88%)	0.59
JVD	9 (14%)	7 (14%)	0.93
Rales	19 (27%)	16 (24%)	0.63
Peripheral edema	19 (27%)	18 (26%)	0.89
LVEF, %	39 (30, 51)	39 (32, 49)	0.81
BNP, pg/mL	147 (62, 338)	153 (53, 360)	0.91
Hemoglobin, g/dL	13.5 (12.0, 14.3)	13.3 (12.0, 14.8)	0.76
eGFR, ml/min/1.73m <sup>2</sup>	63 (38, 85)	57 (40, 85)	0.74
Urea, mg/dL	56 (45, 76)	54 (40, 80)	0.38
Sodium, mmol/L	140 (139, 141)	140 (138, 141)	0.60
Potassium, mmol/L	4.5 (4.2, 4.8)	4.6 (4.3, 5.0)	0.091
ACEi/ARB			0.44 <sup>1</sup>
No	29 (41%)	25 (36%)	
Yes	41 (59%)	44 (64%)	
<50% target dose	12/41 (29%)	18/44 (41%)	
≥50% target dose	29/41 (71%)	26/44 (59%)	
ARNi			0.76 <sup>1</sup>
No	56 (80%)	58 (84%)	
Yes	14 (20%)	11 (16%)	
<50% target dose	4/14 (29%)	4/11 (36%)	
≥50% target dose	10/14 (71%)	7/11 (64%)	
Beta-blocker			0.45 <sup>1</sup>
No	8 (11%)	10 (14%)	
Yes	62 (89%)	59 (86%)	
<50% target dose	19/62 (31%)	24/59 (41%)	
≥50% target dose	43/62 (69%)	35/59 (59%)	
Spironolactone	28 (40%)	41 (59%)	0.022
SGLT2i	21 (30%)	18 (26%)	0.61
Furosemide			0.26
0	28 (40%)	26 (38%)	
≤40 mg/d	25 (36%)	18 (26%)	
>40 mg/d	17 (24%)	25 (36%)	
Dose, mg/d	40 (0, 40)	40 (0, 80)	0.37

Thiazide	4 (6%)	0 (0%)	0.044
B-lines (bilateral)			0.89
<3	52 (74%)	50 (72%)	
≥3	18 (26%)	19 (28%)	
ICD	5 (7%)	2 (3%)	0.25
CRT	1 (1%)	2 (3%)	0.55

Legend: LUS, lung ultrasound; COPD, chronic obstructive pulmonary disease; JVD, jugular venous distension; AFib, atrial fibrillation; ICD, implantable cardioverter-defibrillator; CRT, cardiac resynchronization therapy; BMI: body mass index; LVEF, left ventricular ejection fraction; BNP, brain natriuretic peptide; eGFR, estimated glomerular filtration rate; ACEi/ARB, angiotensin converting enzyme inhibitor/angiotensin receptor blocker; ARNi, angiotensin-receptor neprilysin inhibitor; SGLT2i, sodium glucose co-transporter 2 inhibitor.

Missing values, n (%): weight =40 (29%); BMI =60 (43%); NYHA =4 (3%); JVD =25 (18%); BNP =21 (15%); Hemoglobin =14 (10%); eGFR =14 (10%); Urea =14 (10%); Sodium =20 (14%); Potassium =19 (14%). All other variables did not present missing values.

<sup>1</sup> P-value corresponds to the comparison of *no medication*, *<50%* or *≥50% target dose*.

Table 2. Change in furosemide dose by randomisation group

<b>Furosemide dose change</b>	<b>LUS blind</b>	<b>LUS open</b>	<b>OR (95%CI) *</b>
No change	57 (81.4%)	47 (68.1%)	-
Decrease	4 (5.7%)	10 (14.5%)	-
Increase	9 (12.9%)	12 (17.4%)	-
Any change	13 (18.6%)	22 (31.9%)	2.54 (1.07-6.06)

Legend: LUS, lung ultrasound; OR, odds ratio; CI, confidence interval.

\*Adjusted for age, sex, rales, and peripheral edema. P-value =0.034.

Note: 1 patient with furosemide dose increase also was added metolazone.

Table 3. Heart failure medications optimization and events by randomisation group

<b>HF meds optimization</b>	<b>LUS blind</b>	<b>LUS open</b>	<b>OR (95%CI) *</b>
ACEi/ARB/ARNI <sup>1</sup>	6 (8.6%)	6 (8.7%)	1.02 (0.30-3.46)
Beta-blocker <sup>1</sup>	2 (2.9%)	3 (4.4%)	1.58 (0.25-9.81)
Spironolactone <sup>2</sup>	0	4 (5.8%)	-
SGLT2i <sup>2</sup>	7 (10.0%)	5 (7.3%)	0.72 (0.22-2.40)
Thiazide <sup>3</sup>	3 (4.3%)	1 (1.5%)	0.33 (0.03-3.33)
<b>Outcome events <sup>4</sup></b>	8 (11.4%)	8 (11.6%)	1.17 (0.36-3.78)

Legend: HF, heart failure; LUS, lung ultrasound; OR, odds ratio; CI, confidence interval; ACEi/ARB/ ARNi, angiotensin converting enzyme inhibitor/angiotensin receptor blocker/angiotensin-receptor neprilysin inhibitor.

\*Adjusted for age, sex, rales, and peripheral edema. Outcome events variable was analyzed by means of a Cox model over a median follow-up time of 161 (92-268) days.

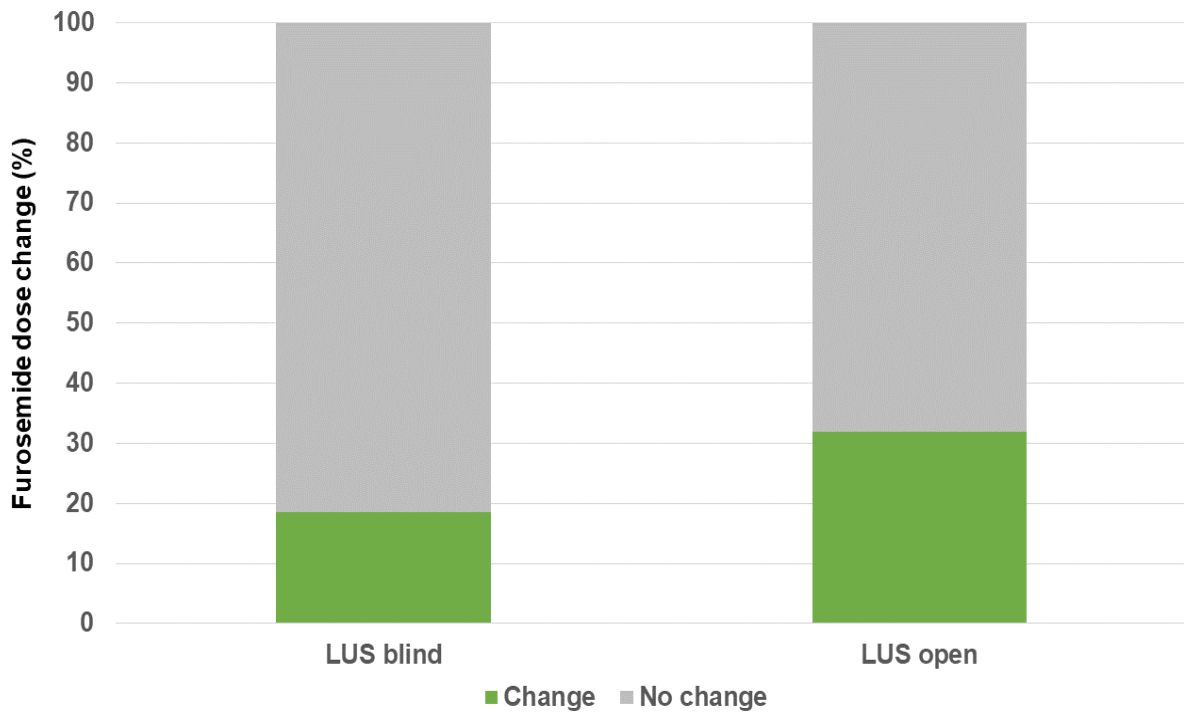
<sup>1</sup> Changes to  $\geq 50\%$  of target dose.

<sup>2</sup> Any new treatment initiation was considered as an optimization.

<sup>3</sup> Any dose change or new initiation was considered.

<sup>4</sup> A composite of time-to-first of emergency room visit or hospitalisation for worsening heart failure or death from cardiovascular causes presented as hazard ratio resulting from a Cox model (as described above).

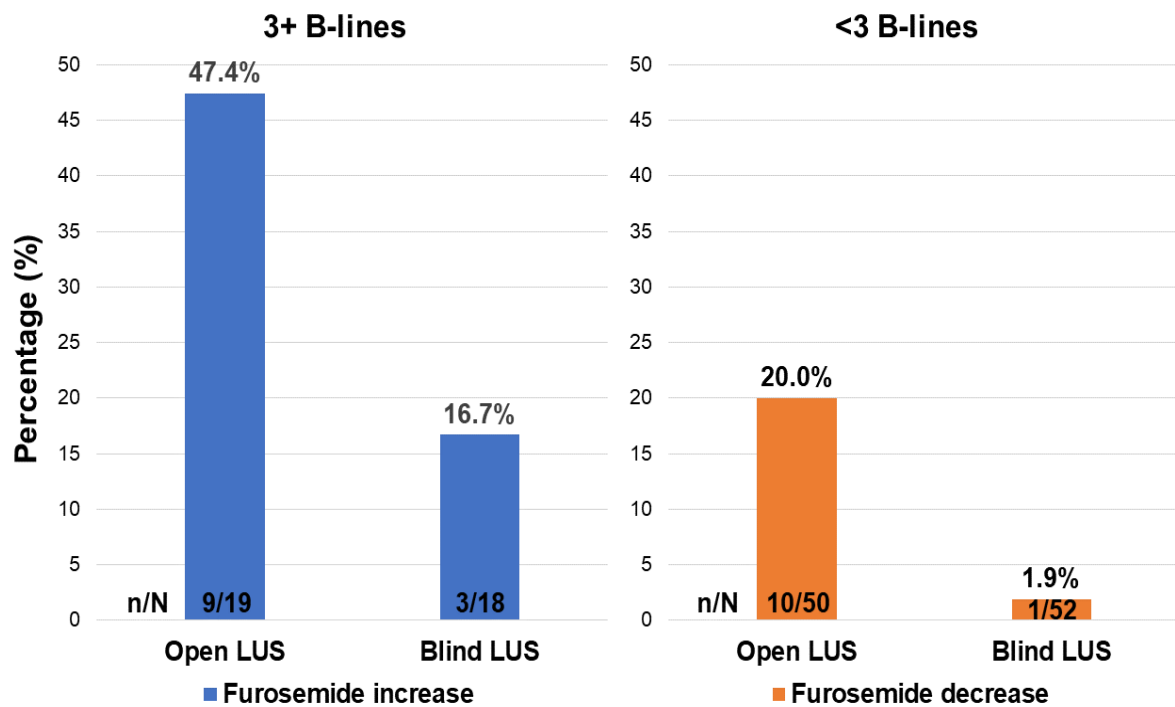
Figure 1. Proportion of furosemide dose change (up- and down-titration) by randomisation group



Legend: LUS, lung ultrasound.

Caption: Patients randomized to show the LUS B-line results to the assistant physicians were more likely to have their furosemide dose changed: 13 (18.6%) vs. 22 (31.9%); adjusted OR 2.54, 95%CI 1.07-6.06.

Figure 2. Furosemide dose increase and decrease according to B-line number in open and blind LUS groups

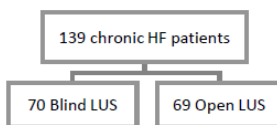


Legend: LUS, lung ultrasound.

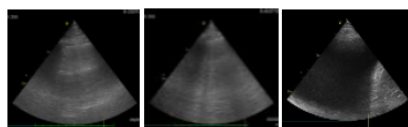
### AIM

To study whether to show or not LUS results to the HF assistant physician would change loop diuretic adjustments.

### DESIGN



LUS possible findings:

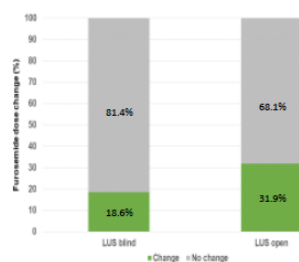


Normal pattern      B-lines      Pleural effusion

Presence of pulmonary congestion:  $\geq 1$  positive ( $\geq 3$  B-lines/area) areas bilaterally or pleural effusion

### KEY FINDINGS

Furosemide dose changes (up- and down-titration) were more frequent among patients in whom LUS results were open to the assistant physician.



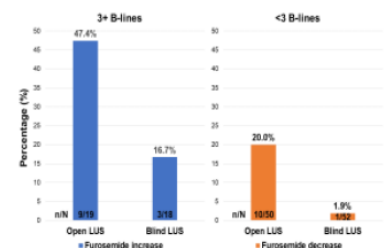
Furosemide dose change	LUS blind	LUS open
No change	57 (81.4%)	47 (68.1%)
Decrease	4 (5.7%)	10 (14.5%)
Increase	9 (12.9%)	12 (17.4%)
Any change*	13 (18.6%)	22 (31.9%)

\* OR (95%CI) 2.54 (1.07-6.06)

LUS B-lines were correlated with the presence of peripheral edema, rales, age, NYHA class and eGFR.

### KEY FINDINGS

Furosemide dose changes correlated significantly with the number of B-lines only in open LUS. In this group, clinicians were more likely to up- and down-titrate furosemide dose if presence/absence of pulmonary congestion was identified, respectively.



HF medication optimization and the risk of HF events or cardiovascular death did not differ by group.

### CONCLUSIONS

These findings suggest that LUS may be used to tailor diuretic therapy to each patient congestion status.

## Graphical abstract