

Supporting information

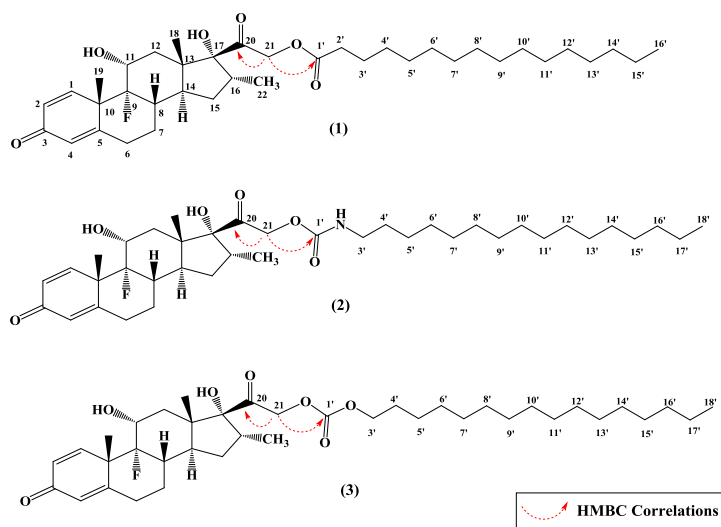


Figure S1: Key HMBC correlations in LDCs 1, 2 and 3.

Table TS1: ^1H - and ^{13}C - NMR chemical shift values of dexamethasone LDCs **1**, **2**, and **3** (ppm, 400 and 100 MHz, respectively, in CDCl_3).

C.	LDC 1		LDC 2		LDC 3	
	δ_{C}	δ_{H}	δ_{C}	δ_{H}	δ_{C}	δ_{H}
1	152.1, CH	7.19 d	152.2, CH	7.21 d	152.0, CH	7.19 d
2	130.1, CH	6.33 d	130.0, CH	6.33 d	139.1, CH	6.33 d
3	186.7, C	-	186.7, C	-	186.7, C	-
4	125.3, CH	6.11 s	125.3, CH	6.11 s	125.3, CH	6.11 d
5	166.0, C	-	166.1, C	-	165.9, C	-
6	31.1, CH ₂	2.37 m, 2.61 m	31.2, CH ₂	2.61 m, 2.35 m	31.1, CH ₂	2.61 m, 2.37 m
7	27.5, CH ₂	1.80 m, 1.57 m	27.5, CH ₂	1.81 m, 1.55 m	27.5, CH ₂	1.82 m, 1.57 m
8	34.5, CH	2.34, m	34.5, CH	2.40, m	34.2, CH	2.35, m
9	99.4, CF	-	99.5, CF	-	99.4, CF	-
10	48.4, C	-	48.5, C	-	48.2, C	-
11	72.5, CH	4.38 m	72.5, CH	4.37 m	72.1, CH	4.36 m
12	36.9, CH ₂	2.41 m, 1.66 m	36.8, CH ₂	2.40 m, 1.66 m	37.0, CH ₂	1.60 m, 2.43 m
13	48.5, C	-	48.2, C	-	48.6, C	-
14	44.2, CH	2.15 m	44.2, CH	2.14 m	44.2, CH	2.15 m
15	32.4, CH ₂	1.75 m, 1.47 m	32.4, CH ₂	1.75 m, 1.22 m	32.4, CH ₂	1.76 m, 1.23 m
16	36.0, CH	3.11 m	35.9, CH	3.10 m	36.1, CH ₂	3.12 m
17	91.2, C	-	91.2, C	-	91.1, C	-
18	16.7, CH ₃	1.05 s	16.7, CH ₃	1.06 s	16.1, CH ₃	1.06 s
19	23.1, CH ₃	1.54 s	23.1, CH ₃	1.54 s	23.1, CH ₃	1.54 s
20	205.0, C	-	206.4, C	-	204.7, C	-
21	68.3, CH ₂	4.87 d	68.4, CH ₂	4.82 d	70.8, CH ₂	4.90 d
22	14.8, CH ₃	0.91 s	14.8, CH ₃	0.90 s	14.8, CH ₃	0.92 s
P-1						
1'	173.9, C					
2'-15'	22.8-34.0	1.25-2.43				
16'	14.3, CH ₃	0.88 s				
P-2,3						
1'			156.1, C	-	155.4, C	-
3'			41.4, CH ₂	3.16 m	69.0, CH ₂	4.15 m
4'-17'			22.8-32.1	1.26-1.50	22.8-28.8	1.26-1.69
18'			14.3, CH ₃	0.88 s	14.3, CH ₃	0.88 s

Table-TS2: Gradient flow system in HPLC.

Time (minutes)	Mobile Phase A (95:5 water:acetonitrile), %	Mobile Phase B (100% acetonitrile), %
0	35	65
12	35	65
15	10	90
32	10	90
35	35	65
40	35	65