

**GLP1 Receptor Agonist Therapy with and without SGLT2 inhibitors in Patients with
Type 2 Diabetes**

Supplementary Material

**Supplemental Table 1. Baseline patient’s characteristics by treatment group stratified
by baseline SGLT2i use 2**

**Supplemental Figure 1. Effect of albiglutide on longitudinal measures by baseline
SGLT2i use 5**

Table S1. Baseline patient's characteristics by treatment group stratified by baseline SGLT2i use

	No SGLT2i at baseline		SGLT2i at baseline	
	Placebo	Albiglutide	Placebo	Albiglutide
	n=4467	n=4420	n=265	n=310
Age, years	64.2 ± 8.6	64.2 ± 8.7	62.7 ± 8.4	63.1 ± 8.0
Male sex	3059 (68.5%)	3074 (69.5%)	206 (77.7%)	229 (73.9%)
Race				
Asian	236 (5.3 %)	221 (5.0 %)	6 (2.3 %)	7 (2.3 %)
Hispanic	959 (21.5%)	977 (22.1%)	29 (10.9%)	28 (9.0 %)
Black or African American	107 (2.4 %)	107 (2.4 %)	7 (2.6 %)	4 (1.3 %)
White	3067 (68.7%)	3024 (68.4%)	221 (83.4%)	270 (87.1%)
Other	98 (2.2 %)	91 (2.1 %)	2 (0.8 %)	1 (0.3 %)
Region				
Asia Pacific	187 (4.2 %)	181 (4.1 %)	4 (1.5 %)	4 (1.3 %)
Eastern Europe	977 (21.9%)	997 (22.6%)	33 (12.5%)	40 (12.9%)
Latin America	834 (18.7%)	850 (19.2%)	11 (4.2 %)	8 (2.6 %)
North America	892 (20.0%)	873 (19.8%)	86 (32.5%)	93 (30.0%)
Western Europe	1577 (35.3%)	1519 (34.4%)	131 (49.4%)	165 (53.2%)
Smoking				
Current smoker	711 (15.9%)	687 (15.5%)	40 (15.1%)	50 (16.1%)
Former smoker	1861 (41.7%)	1927 (43.6%)	138 (52.1%)	155 (50.0%)
Never smoked	1894 (42.4%)	1805 (40.8%)	87 (32.8%)	105 (33.9%)

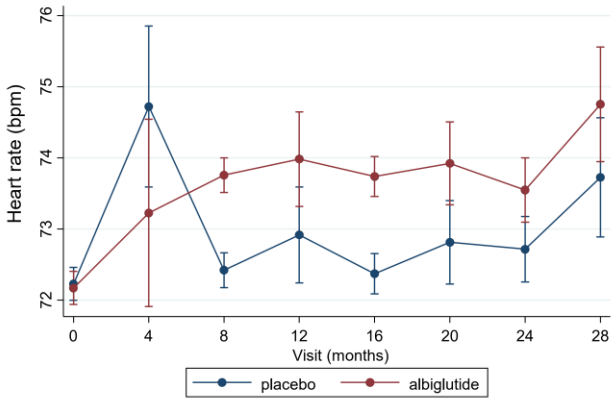
Hypertension	3862 (86.5%)	3811 (86.2%)	233 (87.9%)	278 (89.7%)
CAD	3137 (70.2%)	3088 (69.9%)	208 (78.5%)	244 (78.7%)
Myocardial infarction	2097 (47.0%)	2063 (46.7%)	139 (52.5%)	159 (51.3%)
Heart failure	931 (20.8%)	904 (20.5%)	37 (14.0%)	50 (16.1%)
PAD	1106 (24.8%)	1136 (25.7%)	53 (20.0%)	59 (19.0%)
Stroke	812 (18.2%)	780 (17.6%)	42 (15.8%)	47 (15.2%)
Atrial fibrillation/flutter	403 (9.0 %)	399 (9.0 %)	18 (6.8 %)	22 (7.1 %)
BMI, kg/m²	32.2 ± 5.9	32.2 ± 5.9	33.8 ± 5.7	33.4 ± 5.9
Heart rate, bpm	72.4 ± 10.5	72.3 ± 10.6	73.1 ± 11.3	71.1 ± 10.2
Systolic BP, mmHg	134.9 ± 16.5	134.9 ± 16.6	132.0 ± 16.0	132.3 ± 16.5
Diastolic BP, mmHg	77.0 ± 10.2	76.9 ± 10.1	75.0 ± 9.4	75.5 ± 9.6
HbA1c, %	8.7 ± 1.5	8.8 ± 1.5	8.5 ± 1.2	8.5 ± 1.2
eGFR, ml/min/1.73m²	78.8 ± 25.4	79.1 ± 25.7	80.4 ± 24.5	80.0 ± 23.2
Nephropathy	798 (17.9%)	843 (19.1%)	42 (15.8%)	55 (17.7%)
Diabetic eye disease	899 (20.1%)	921 (20.8%)	56 (21.1%)	61 (19.7%)
Diabetes duration, years	14.1 ± 8.9	14.0 ± 8.6	14.5 ± 7.9	15.0 ± 8.6
Insulin	2587 (57.9%)	2674 (60.5%)	150 (56.6%)	185 (59.7%)
Metformin	3297 (73.8%)	3215 (72.7%)	209 (78.9%)	247 (79.7%)
DPP4i	674 (15.1%)	624 (14.1%)	65 (24.5%)	74 (23.9%)
Sulfonylureas	1318 (29.5%)	1281 (29.0%)	61 (23.0%)	65 (21.0%)
Thiazolidinediones	91 (2.0 %)	83 (1.9 %)	11 (4.2 %)	9 (2.9 %)
ACEi/ARBs	3551 (79.5%)	3505 (79.3%)	216 (81.5%)	252 (81.3%)

Beta-blockers	2992 (67.0%)	2909 (65.8%)	190 (71.7%)	219 (70.6%)
MRAs	376 (8.4 %)	389 (8.8 %)	19 (7.2 %)	24 (7.7 %)
Statins	3751 (84.0%)	3689 (83.5%)	237 (89.4%)	278 (89.7%)
Antiplatelet agents	3424 (76.7%)	3412 (77.2%)	2215 (81.1%)	239 (77.1%)
Anticoagulants	403 (9.0 %)	360 (8.1 %)	11 (4.2 %)	23 (7.4 %)

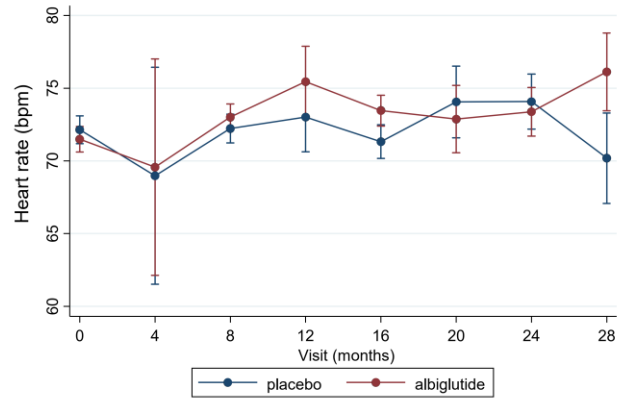
Legend: Data are mean (standard deviation), median (percentile25-75) or number (%). CAD, coronary artery disease; PAD, peripheral artery disease; BMI, body mass index; HbA1c, glycated hemoglobin; eGFR, estimated glomerular filtration rate; DPP4i, dipeptidyl peptidase 4 inhibitors; SGLT2i, sodium glucose co-transporter 2 inhibitors; ACEi/ARBs, angiotensin converting enzyme inhibitors/angiotensin receptor blockers; MRAs, mineralocorticoid receptor antagonists.

Heart rate

No SGLT2i

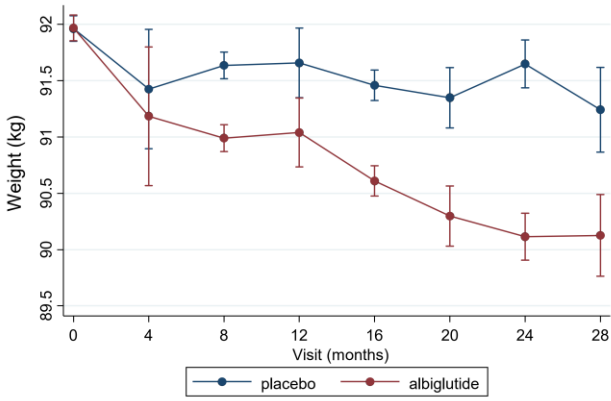


SGLT2i

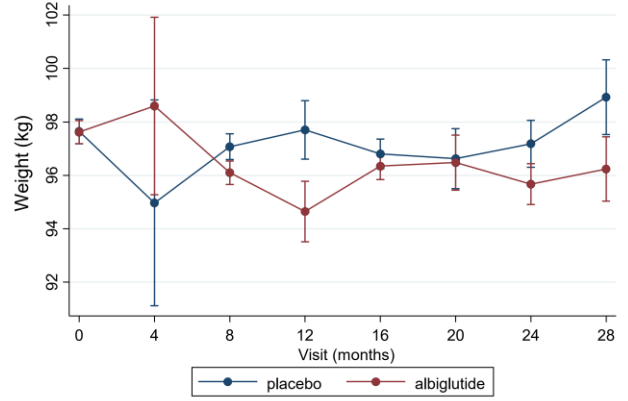


Weight

No SGLT2i

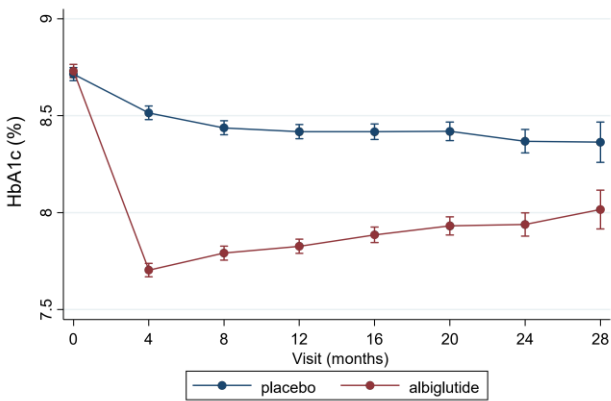


SGLT2i

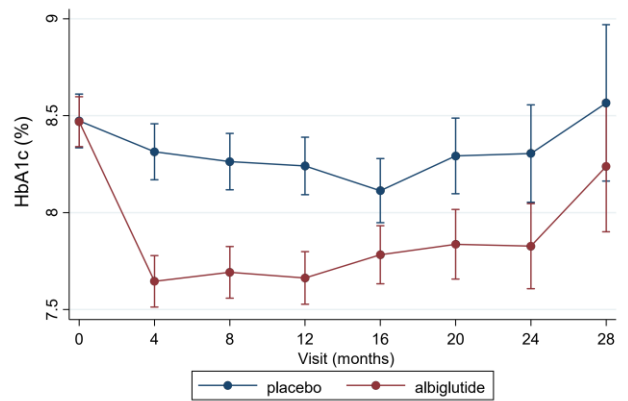


HbA1c

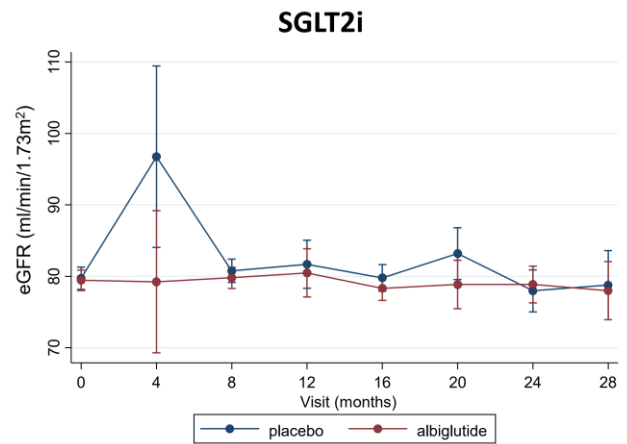
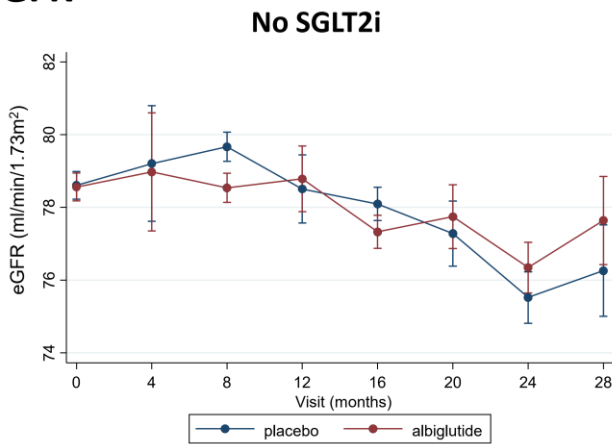
No SGLT2i



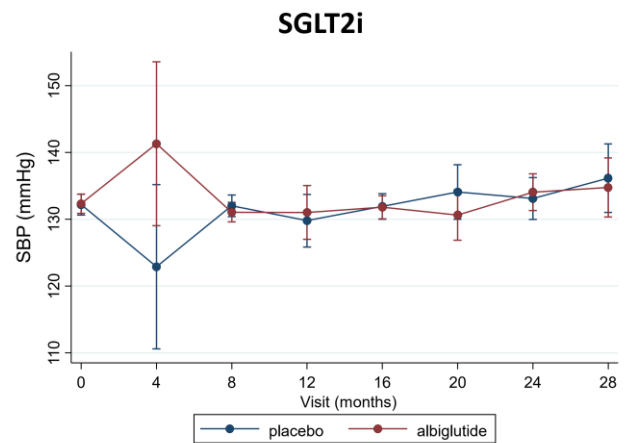
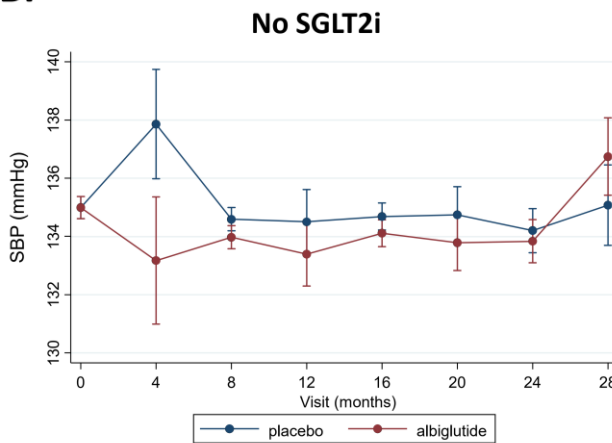
SGLT2i



eGFR



SBP



Supplementary Figure 1. Effect of albiglutide on longitudinal measures by baseline SGLT2i use.

Legend: SGLT2i, SGLT2 inhibitor; HbA1c%, glycated hemoglobin; eGFR, estimated glomerular filtration rate; SBP, systolic blood pressure.

Caption: Difference between albiglutide and placebo: 1) heart rate: No SGLT2i: 8 months +1.3 (1.0 to 1.7) bpm, 16 months +1.4 (1.0 to 1.8), 24 months +0.8 (0.2 to 1.5) bpm; SGLT2i: 8 months +0.8 (-0.6 to 2.1) bpm, 16 months +2.1 (0.6 to 3.7) bpm, 24 months -0.7 (-3.2 to 1.8) bpm; interaction P =0.39; 2) weight: No SGLT2i: 8 months -0.6 (-0.8 to -0.5) Kg, 16 months -0.8 (-1.0 to -0.7) Kg, 24 months -1.5 (-1.8 to -1.2) Kg; SGLT2i: 8 months -1.0 (-1.6 to -0.3) Kg, 16 months -0.5 (-1.2 to 0.3) Kg, 24 months -1.5 (-2.7 to -0.3) Kg; interaction P =0.93; 3) HbA1c: No SGLT2i: 8 months -0.6 (-0.7 to -0.6) %, 16 months -0.5 (-0.6 to -0.5) %, 24 months -0.4 (-0.5 to -0.3) %; SGLT2i: 8 months -0.6 (-0.8 to -0.4) %, 16 months -0.3 (-0.6 to -0.1) %, 24 months -0.5 (-0.8 to -0.1) %; interaction P =0.85; 4) eGFR: No SGLT2i: 8 months -1.1 (-1.7 to -0.6) ml/min/1.73m², 16 months -0.8 (-1.4 to -0.1) ml/min/1.73m², 24 months 0.8 (-0.2 to 1.8) ml/min/1.73m²; SGLT2i: 8 months -1.0 (-3.2 to 1.2) ml/min/1.73m², 16 months -1.5 (-4.0 to 1.1) ml/min/1.73m², 24 months 0.9 (-3.0 to 4.8) ml/min/1.73m²; interaction P =0.83; 5) SBP: No SGLT2i: 8 months -0.6 (-1.2 to -0.1) mmHg, 16 months -0.6 (-1.2 to 0.1) mmHg, 24 months -0.4 (-1.4 to 0.7) mmHg; SGLT2i: 8 months -1.0 (-3.2 to 1.2) mmHg, 16 months -0.1 (-2.7 to 2.5) mmHg, 24 months +1.0 (-3.2 to 5.1) mmHg; interaction P =0.91.