



HAL
open science

Intracranial Aneurysm Detection using Spherical Representations

Youssef Assis, Liang Liao, Fabien Pierre, René Anxionnat, Erwan Kerrien

► **To cite this version:**

Youssef Assis, Liang Liao, Fabien Pierre, René Anxionnat, Erwan Kerrien. Intracranial Aneurysm Detection using Spherical Representations. Colloque Français d'Intelligence Artificielle en Imagerie Biomédicale, Mar 2023, Paris, France. hal-04206825

HAL Id: hal-04206825

<https://hal.univ-lorraine.fr/hal-04206825v1>

Submitted on 14 Sep 2023

HAL is a multi-disciplinary open access archive for the deposit and dissemination of scientific research documents, whether they are published or not. The documents may come from teaching and research institutions in France or abroad, or from public or private research centers.

L'archive ouverte pluridisciplinaire **HAL**, est destinée au dépôt et à la diffusion de documents scientifiques de niveau recherche, publiés ou non, émanant des établissements d'enseignement et de recherche français ou étrangers, des laboratoires publics ou privés.

Intracranial Aneurysm Detection using Spherical Representations



Youssef Assis¹, Liang Liao^{1,2,3}, Fabien Pierre¹, René Anxionnat^{2,3}, Erwan Kerrien¹

¹ University of Lorraine, CNRS, INRIA, LORIA, F-54000 Nancy, France

² Department of Diagnostic and Therapeutic Neuroradiology, University of Lorraine, Nancy, France

³ IADI, INSERM U1254, University of Lorraine, Nancy, France



Context & Contributions

- **Context:** Detection of unruptured Intracranial aneurysms is a difficult problem.
- **Goal:** - Automate aneurysm detection.
- Assist radiologists in their clinical routine.
- **Contributions:** - Efficient data sampling strategy.
- 3D adaptation of the YOLO [4] architecture.
- More adapted evaluation metrics.

Introduction

- **Intracranial aneurysms:** local dilatations of cerebral blood vessels (Figure 1, red arrows).
- Extremely difficult detection problem:
 - **Data scarcity:** - Small and private datasets.
- 0 to 5 aneurysms per patient.
 - **Class imbalance:** very small structures ($\approx 10/1M$ voxels).
 - **Data annotation:** difficult and time-consuming.

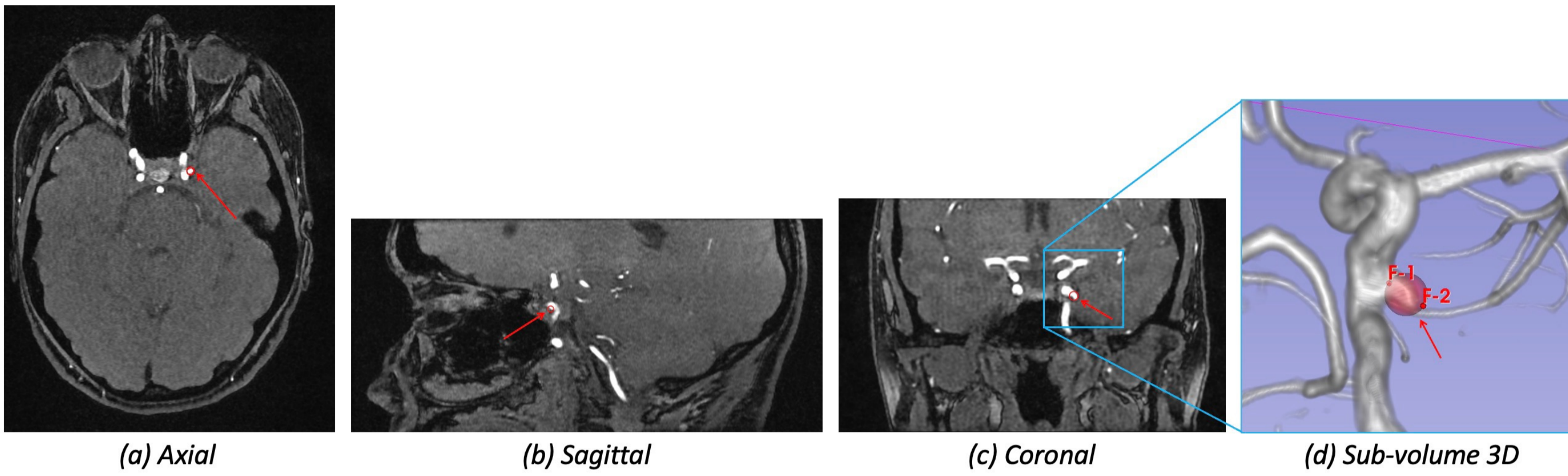


Figure 1: MRA (a,b,c) cut planes; (d) VR view (aneurysm size 3.80mm)

Method

1. Datasets: TOF-MRA images

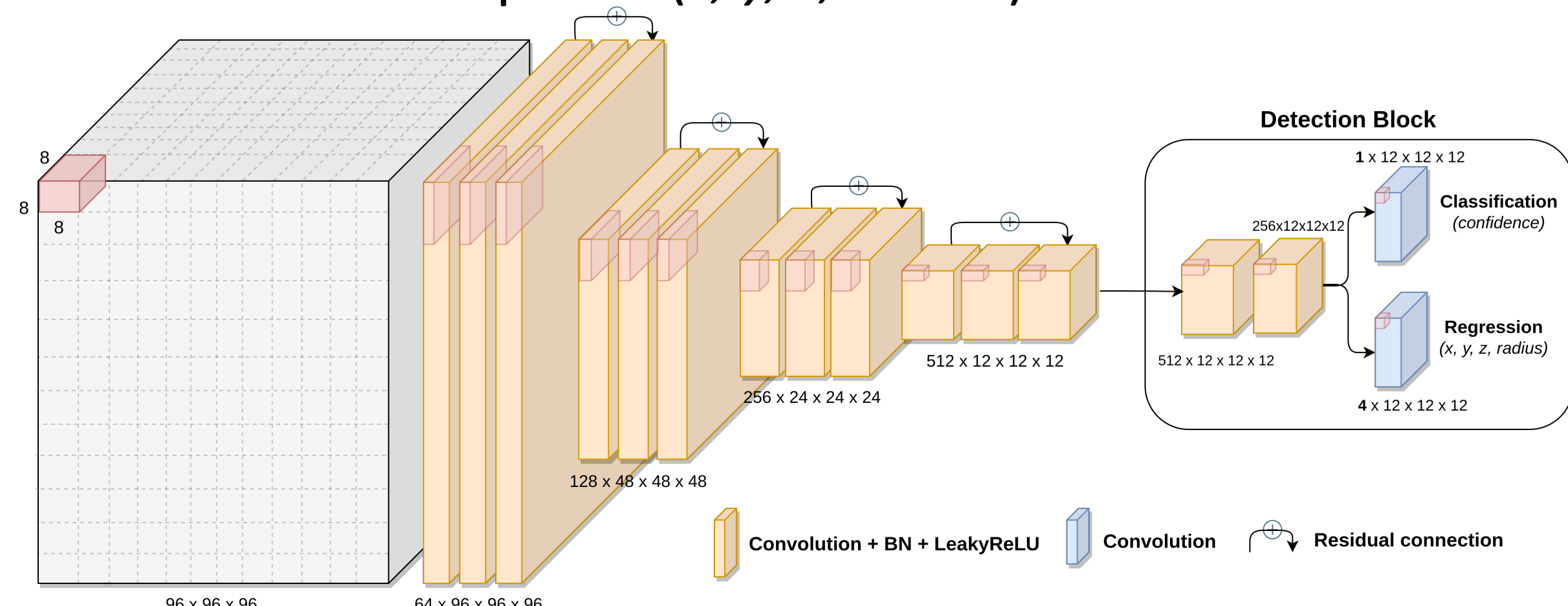
	# Subjects	# Aneurysms	Mean size
CHRU Nancy	132	206	3.97mm
CHUV Lausanne [1]	270	164	3.74mm

2. Data Sampling Strategy:

- Data annotation:**
 - Approximate and fast: 2 points \rightarrow Sphere (Figure 1).
- Small patch-based approach:**
 - 96 x 96 x 96 voxels.
 - Non-intersecting \rightarrow independent patches.
- Data selection and synthesis:**
 - Negative patches (without aneurysm): Selection 40 patches per patient; Mostly centered on blood vessels.
 - Positive patches (with aneurysm): Synthesis 50 duplicates and deformation by random distortion.

3. Deep Neural Network Architecture:

- 3D anchor-free adaptation of the YOLO [4] architecture.
- Detection \rightarrow Sphere ($x, y, z, radius$) + confidence score.



4. Evaluation:

- Based on Intersection-over-Union metric (TP = IoU > 10%).
- Average Precision (AP), Sensitivity, False positives per case.

Experimental Study

1. Preliminary study: CHRU Nancy

- **Ablation study confirms our data sampling strategy:**
 - Data selection and synthesis.
 - Spherical representation \gg Box representation.
 - Anchor-free \gg Anchor-based.
- Results (5-Fold cross validation):
 - Average Precision: 81.22%.
 - Sensitivity: 81.55% associated with 0.57 FP/case.

2. Validation with public dataset: CHUV Lausanne [1]

- 5-Fold cross validation.
- Very competitive results.
- Reduced training and inference time.

	Average Precision (%)	Sensitivity (%)	FP/case	Training Time
nnDetection [2]	73.68	84.76	0.67	29 hours
nnUnet [3]	72.46	71.95	0.13	5 days
Ours	75.80	84.76	0.57	24 hours

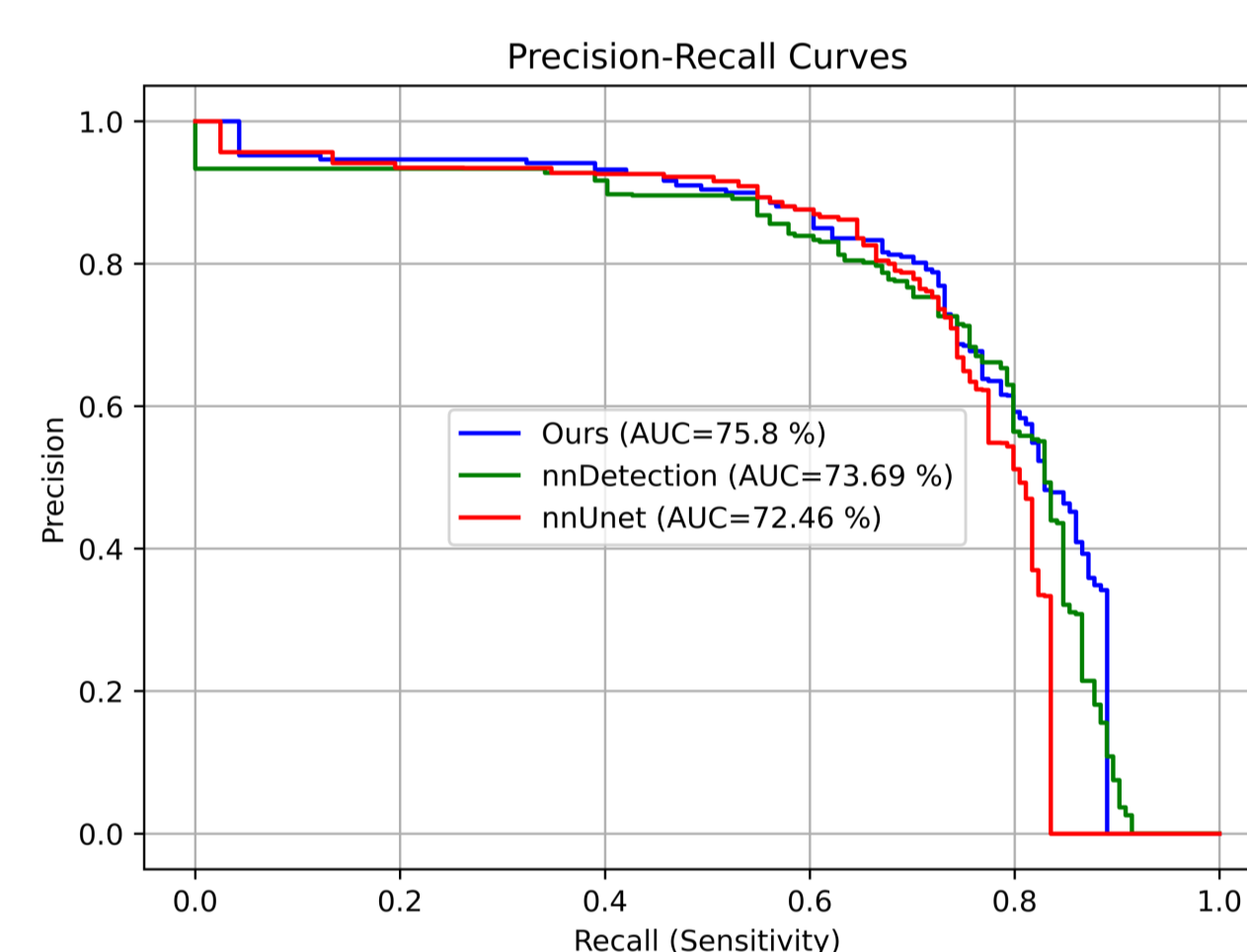


Figure 3: Precision-Sensitivity curves

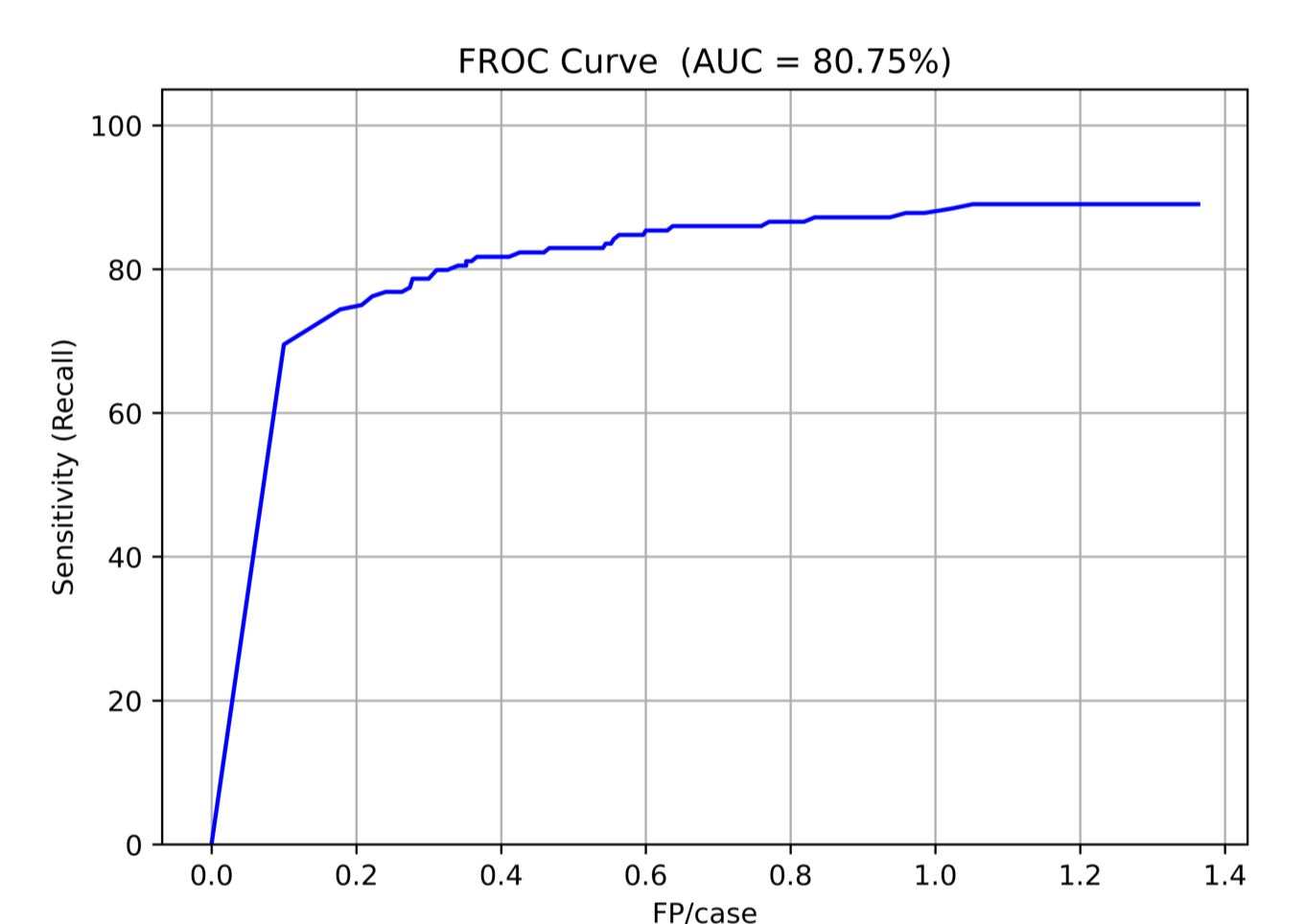


Figure 4: FROC curve of our method

Visual Results

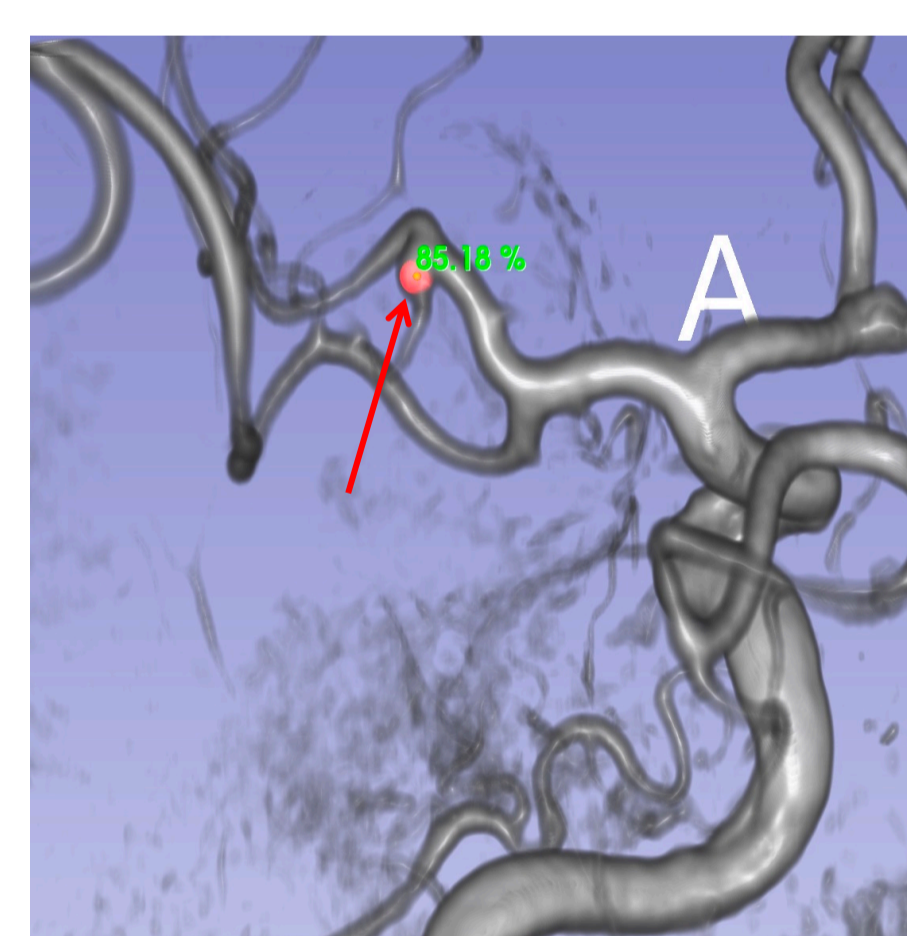


Figure 5: Branching of small arteries can be mistaken for an aneurysm (false positive)

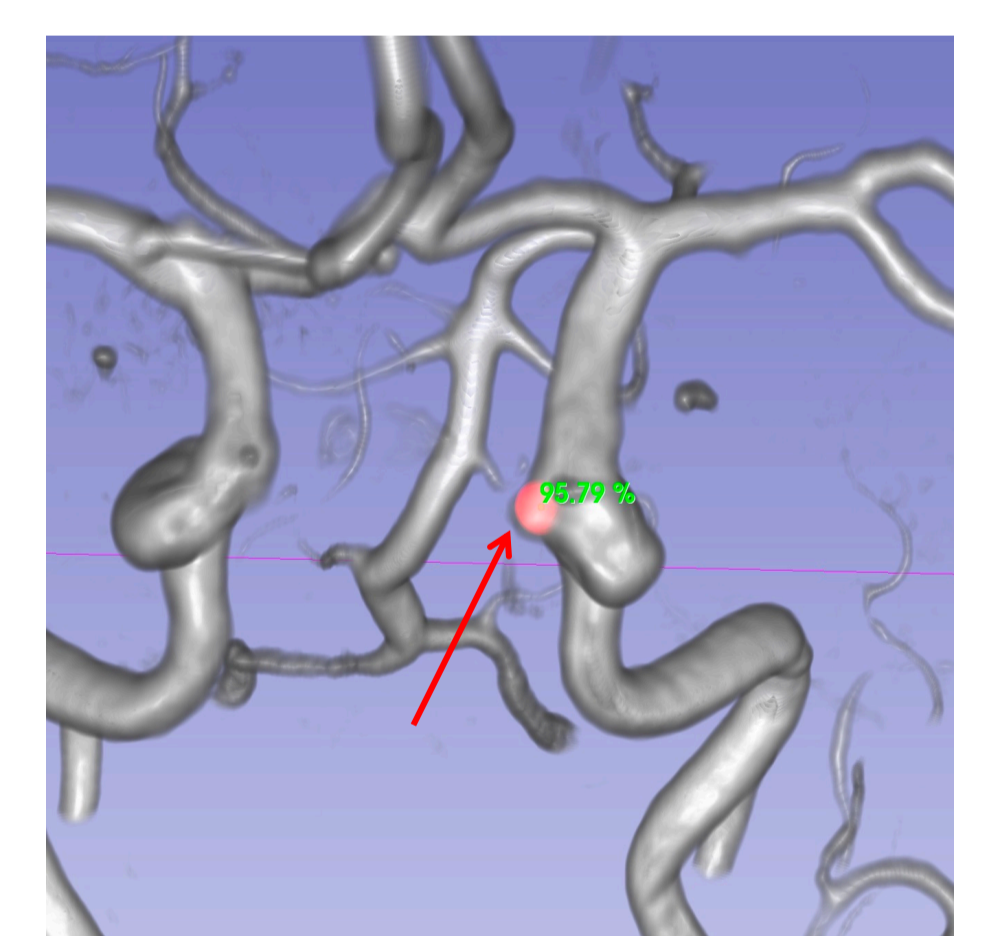


Figure 6: A detected aneurysm that was overlooked during the annotation phase (Expert sensitivity < 100%)

Conclusion & Perspectives

- Combination of an efficient data sampling strategy with a 3D YOLO architecture for aneurysm detection.
- Can be easily adapted for small object detection problems.
- **Perspectives:** combine and improve the performance with recent training techniques from 2D object detection.

References

- [1] Di Noto et al. Towards automated brain aneurysm detection in TOF-MRA: open data, weak labels, and anatomical knowledge, Neuroinformatics, 2022.
- [2] Baumgartner et al. nnDetection: a self-configuring method for medical object detection. MICCAI, 2021.
- [3] Isensee et al. nnu-net: a self-configuring method for deep learning-based biomedical image segmentation. Nature methods, 2021.
- [4] Redmon et al. Yolov3: An incremental improvement, arxiv preprint, 2018.