

1 **Supplementary Table XX.** Baseline characteristics of study population stratified by levels of CA-125
 2 (≤ 35 U/mL, >35 U/mL).

	≤ 35 U/mL	>35 U/mL	p-value [^]
Number of patients	917 (100.0)	194 (100.0)	
Age, years	70.1 \pm 9.8	69.7 \pm 10.8	0.6075
Sex, N (%)			
Male	603 (65.8)	150 (77.3)	0.0017
Female	314 (34.2)	44 (22.7)	
Race, N (%)			
White	775 (84.5)	159 (82.0)	0.0020
Black	14 (1.5)	11 (5.7)	
Asian	78 (8.5)	18 (9.3)	
Other	41 (4.5)	4 (2.1)	
Ethnicity, N (%)			
Not Hispanic or Latino	707 (77.1)	140 (72.2)	0.0795
Hispanic / Latino	187 (20.4)	51 (26.3)	
Region, N (%)			
North America	105 (11.5)	51 (26.3)	<0.0001
Latin America	172 (18.8)	45 (23.2)	
Europe	541 (59.0)	77 (39.7)	
Asia	69 (7.5)	17 (8.8)	
Other	30 (3.3)	4 (2.1)	
Smoking status, N (%)			
Never smoked	407 (44.4)	81 (41.8)	0.0055
Ex-smoker	399 (43.5)	102 (52.6)	
Currently smokes	91 (9.9)	7 (3.6)	
Drinking alcohol, N (%)			
Does not drink alcohol	542 (59.1)	118 (60.8)	0.7702
Drinks alcohol	347 (37.8)	72 (37.1)	
Changes in NYHA during 3m, N (%)			
Improved	107 (11.7)	25 (12.9)	0.1678
No change	759 (82.8)	151 (77.8)	
Unstable	5 (0.5)	3 (1.5)	
Worsened	46 (5.0)	15 (7.7)	
Time since HF diagnosis, y	4.9 \pm 5.3	5.2 \pm 5.8	0.5059
Heart failure duration, y			

	<=35 U/mL	>35 U/mL	p-value^
<=1	196 (21.4)	50 (25.8)	0.2409
>1 to 5	408 (44.5)	80 (41.2)	
>5 to 10	175 (19.1)	29 (14.9)	
>10	138 (15.0)	35 (18.0)	
Diabetes status, N (%)			
Diabetes	438 (47.8)	98 (50.5)	0.4860
No diabetes	479 (52.2)	96 (49.5)	
LVEF (%)	41.3 ± 15.0	35.1 ± 14.0	<0.0001
LVEF, % Mean	41.3 ± 15.0	35.1 ± 14.0	<0.0001
LVEF, N (%)			
<50	603 (65.8)	156 (80.4)	<0.0001
50 to <60	153 (16.7)	26 (13.4)	
>=60	161 (17.6)	12 (6.2)	
SBP, mmHg	128.6 ± 15.8	124.8 ± 15.3	0.0022
DBP, mmHg	74.7 ± 10.5	74.3 ± 10.6	0.5916
Heart rate, bpm	70.1 ± 11.6	72.2 ± 12.9	0.0208
BMI, kg/m ²	29.44 ± 5.69	28.89 ± 5.53	0.2213
BMI (kg/m ²), N (%)			
<30	524 (57.1)	122 (62.9)	0.1407
>=30	393 (42.9)	72 (37.1)	
eGFR CKD-EPI, mL/min/1.73m ²	60.6 ± 20.1	59.3 ± 21.0	0.4245
eGFR CKD-EPI (mL/min/1.73m ²), N (%)			
>=90	79 (8.6)	14 (7.2)	0.5416
60 to <90	368 (40.1)	81 (41.8)	
45 to <60	243 (26.5)	44 (22.7)	
30 to <45	179 (19.5)	40 (20.6)	
20 to <30	46 (5.0)	15 (7.7)	
<20	2 (0.2)	0	
Albumin/Cr ratio*, [mg/g]	15.91 (6.2, 53.0)	23.87 (8.84, 95.47)	<0.0001#
Hemoglobin [g/dL]	13.64 ± 1.48	13.51 ± 1.77	0.2813
History of atrial fibrillation/flutter ¹	434 (47.3)	108 (55.7)	0.0396
Albumin/Cr ratio*, mg/g	15.91 (6.2, 53.0)	23.87 (8.84, 95.47)	<0.0001#
Hemoglobin, mg/dL	13.64 ± 1.48	13.51 ± 1.77	0.2813
Atrial fibrillation/flutter ¹ , N (%)	434 (47.3)	108 (55.7)	0.0396
Atrial fibrillation ² , N (%)	416 (45.4)	107 (55.2)	0.0151
HF hospitalization (last 12 months) ³ , N (%)	230 (25.1)	71 (36.6)	0.0010

	<=35 U/mL	>35 U/mL	p-value [^]
Hypertension, N (%)	757 (82.6)	167 (86.1)	0.2324
Hypercholesterolaemia, N (%)	634 (69.1)	139 (71.6)	0.4898
ACS within 6 months, N (%)	44 (4.8)	13 (6.7)	0.2751
MI, N (%)	328 (35.8)	82 (42.3)	0.0883
CAD, N (%)	363 (39.6)	92 (47.4)	0.0437
CABG or PCI, N (%)	346 (37.7)	82 (42.3)	0.2382
Valvular heart disease, N (%)	142 (15.5)	39 (20.1)	0.1136
Invasive EP procedure, N (%)	73 (8.0)	20 (10.3)	0.2853
Left Bundle Branch Block, N (%)	106 (11.6)	23 (11.9)	0.9069
Electrical cardioversion in the last 6 months, N (%)	17 (1.9)	3 (1.5)	0.7708
Electrical defibrillation in the last 6 months, N (%)	4 (0.4)	0	0.3569
Hypertension, N (%)	757 (82.6)	167 (86.1)	0.2324
Hypercholesterolaemia, N (%)	634 (69.1)	139 (71.6)	0.4898
ACS within 6 months, N (%)	44 (4.8)	13 (6.7)	0.2751
MI, N (%)	328 (35.8)	82 (42.3)	0.0883
CAD, N (%)	363 (39.6)	92 (47.4)	0.0437
CABG or PCI, N (%)	346 (37.7)	82 (42.3)	0.2382
Valvular heart disease, N (%)	142 (15.5)	39 (20.1)	0.1136
Invasive EP procedure, N (%)	73 (8.0)	20 (10.3)	0.2853
Left Bundle Branch Block, N (%)	106 (11.6)	23 (11.9)	0.9069
Electrical cardioversion in the last 6 months, N (%)	17 (1.9)	3 (1.5)	0.7708
Electrical defibrillation in the last 6 months, N (%)	4 (0.4)	0	0.3569
Cardiac Biomarker			
NT-proBNP*, pg/mL	1244 (656, 2129)	2448 (1197, 4499)	<0.0001#
hs-cTnT*, ng/l	18.0 (12.7, 28.6)	26.0 (16.8, 38.7)	<0.0001#

1 Abbreviations: ACS: acute coronary syndrome, BMI: body mass index, CABG: coronary artery bypass graft, CAD:
2 coronary artery disease, DBP: diastolic blood pressure, eGFR: estimated glomerular filtration rate, EP
3 electrophysiology, HF: heart failure, hs-cTnT: high sensitive cardiac troponin T, LVEF: left ventricular ejection
4 fraction, MI: myocardial infarction, NYHA: New York heart association, NT-proBNP: N terminal pro b type
5 natriuretic peptides, PCI: percutaneous coronary intervention, SBP: systolic blood pressure.

6
7 * Median (IQR) ** Diabetes status is determined by a combination of medical history and pre-treatment HbA1c
8 values. ¹Defined as atrial fibrillation or atrial flutter reported in any ECG before treatment intake or history of atrial
9 fibrillation or atrial flutter reported as medical history. ²Defined as atrial fibrillation reported in any ECG before
10 treatment intake or history of atrial fibrillation reported in medical history. ³Reported either on heart failure history
11 and diagnosis or Health Care Resource Utilization form.

12 [^] t-test for continuous variables and chi-square test for categorical variables. # based on log-transformed results.

13

1 **Table XX.** Congestion signs and symptoms stratified by levels of CA-125 at baseline (≤ 35 U/mL, >35
 2 U/mL).

3

	≤ 35 U/mL	>35 U/mL	p-value*
NYHA, N (%)			
II	746 (81.4)	144 (74.2)	0.0809
III	169 (18.4)	49 (25.3)	
IV	2 (0.2)	1 (0.5)	
KCCQ Orthopnea, N (%)			
Never over past 2 weeks or <1 time/week	772 (84.2)	147 (75.8)	0.0250
1-2 times/week	69 (7.5)	18 (9.3)	
3 times or more but not every day	34 (3.7)	12 (6.2)	
Every night	40 (4.4)	17 (8.8)	
Missing	2 (0.2)	0	
KCCQ Fatigue, N (%)			
Never	255 (27.8)	37 (19.1)	0.0018
<1 time per week or 1-2 times per week	345 (37.6)	62 (32.0)	
3 or more times per week or at least once a day	206 (22.5)	60 (30.9)	
Either several times per day or all of the time	110 (12.0)	35 (18.0)	
Missing	1 (0.1)	0	
Peripheral Edema, N (%)			
Absent	688 (75.0)	132 (68.0)	0.0848
Trace	74 (8.1)	27 (13.9)	
Up to ankle	70 (7.6)	15 (7.7)	
Above ankle	85 (9.3)	20 (10.3)	
Sacral	0	0	
Ascites	0	0	
Abnormal JVD, N(%)			
No	868 (94.7)	180 (92.8)	0.3202
Yes	49 (5.3)	14 (7.2)	
Pulmonary rales, N (%)			
Absent	826 (90.1)	171 (88.1)	0.0279
Bases	89 (9.7)	19 (9.8)	
One third of lung field or more	2 (0.2)	4 (2.1)	
S3 gallop, N (%)			
No	898 (97.9)	191 (98.5)	0.6224
Yes	19 (2.1)	3 (1.5)	

	<=35 U/mL	>35 U/mL	p-value*
Cardiac Murmur, N (%)			
No	818 (89.2)	162 (83.5)	0.0315
Yes	99 (10.8)	32 (16.5)	

1 Abbreviations: NYHA: New York Heart Association, KCCQ: Kansas City Cardiomyopathy Questionnaire, JVD:
2 jugular vein distention; * p-values from ordinal regression likelihood ratio test. # based on log-transformed results.

3

1 **Table XX.** Baseline characteristics of study population stratified by levels of LVEF (<40%, >=40%).

	<40%	>=40%	p-value [^]
Number of patients	573 (100.0)	538 (100.0)	
Age, years	68.3 ± 10.6	71.9 ± 9.0	<0.0001
Sex, N (%)			
Male	445 (77.7)	308 (57.2)	<0.0001
Female	128 (22.3)	230 (42.8)	
Race, N (%)			
White	479 (83.6)	455 (84.6)	<0.0001
Black/ African-American	18 (3.1)	7 (1.3)	
Asian	61 (10.6)	35 (6.5)	
Other including mixed race	4 (0.7)	41 (7.6)	
Black	18 (3.1)	7 (1.3)	
Other	4 (0.7)	41 (7.6)	
Ethnicity, N (%)			
Hispanic or Latino	143 (25.0)	95 (17.7)	0.0007
Not Hispanic or Latino	404 (70.5)	443 (82.3)	
Not Hispanic or Latino	404 (70.5)	443 (82.3)	0.0007
Hispanic or Latino	143 (25.0)	95 (17.7)	
Region, N (%)			
North America	83 (14.5)	73 (13.6)	<0.0001
Latin America	133 (23.2)	84 (15.6)	
Europe	300 (52.4)	318 (59.1)	
Asia	55 (9.6)	31 (5.8)	
Other	2 (0.3)	32 (5.9)	
Smoking status, N (%)			
Never smoked	220 (38.4)	268 (49.8)	0.0037
Ex-smoker	278 (48.5)	223 (41.4)	
Currently smokes	53 (9.2)	45 (8.4)	
Drinking alcohol, N (%)			
Does not drink alcohol	326 (56.9)	334 (62.1)	0.4897
Drinks alcohol	216 (37.7)	203 (37.7)	
Changes in NYHA during 3m, N (%)			
Improved	75 (13.1)	57 (10.6)	0.0703
No change	454 (79.2)	456 (84.8)	
Unstable	6 (1.0)	2 (0.4)	
Worsened	38 (6.6)	23 (4.3)	

	<40%	>=40%	p-value^
Time since HF diagnosis, y	6.0 ± 6.2	3.9 ± 4.2	<0.0001
Heart failure duration, y, N (%)			
<=1	100 (17.5)	146 (27.1)	<0.0001
>1 to 5	235 (41.0)	253 (47.0)	
>5 to 10	118 (20.6)	86 (16.0)	
>10	120 (20.9)	53 (9.9)	
Diabetes status, N (%)			
Diabetic	268 (46.8)	268 (49.8)	0.3104
Non-Diabetic	305 (53.2)	270 (50.2)	
LVEF (%)	27.5 ± 5.7	53.9 ± 8.6	<0.0001
Diabetes	268 (46.8)	268 (49.8)	0.3104
No diabetes	305 (53.2)	270 (50.2)	
LVEF, %	27.5 ± 5.7	53.9 ± 8.6	<0.0001
LVEF, N (%)			
<50	573 (100.0)	186 (34.6)	<0.0001
50 to <60	0	179 (33.3)	
>=60	0	173 (32.2)	
SBP, mmHg	123 ± 15	133 ± 15	<0.0001
DBP, mmHg	74 ± 11	76 ± 11	0.0006
Heart rate, bpm	70.7 ± 11.9	70.2 ± 11.8	0.5216
BMI, kg/m ²	28.57 ± 5.42	30.16 ± 5.81	<0.0001
SBP, mmHg	123 ± 15	133 ± 15	<0.0001
DBP, mmHg	74 ± 11	76 ± 11	0.0006
Heart rate, bpm	71 ± 12	70 ± 12	0.5216
Baseline BMI, kg/m ²	29 ± 5	30 ± 6	<0.0001
Baseline BMI (kg/m ²), N (%)			
<30	373 (65.1)	273 (50.7)	<0.0001
>=30	200 (34.9)	265 (49.3)	
Baseline eGFR according to CKD-EPI [mL/min/1.73m ²]	60.6 ± 21.2	60.1 ± 19.1	0.6609
eGFR CKD-EPI, mL/min/1.73m ²	60.6 ± 21.2	60.1 ± 19.1	0.6609
eGFR CKD-EPI (mL/min/1.73m ²) classification, N (%)			
>=90	59 (10.3)	34 (6.3)	0.0919
60 to <90	223 (38.9)	226 (42.0)	
45 to <60	141 (24.6)	146 (27.1)	
30 to <45	111 (19.4)	108 (20.1)	
20 to <30	38 (6.6)	23 (4.3)	
<20	1 (0.2)	1 (0.2)	

	<40%	>=40%	p-value [^]
Albumin/Cr ratio*, mg/g	18.6 (7.0, 65.7)	15.0 (6.2, 53.0)	0.2171#
Hemoglobin [g/dL]	13.80 ± 1.55	13.41 ± 1.50	<0.0001
Atrial fibrillation/flutter ¹ , N (%)	256 (44.7)	286 (53.2)	0.0055
Atrial fibrillation ² , N (%)	249 (43.5)	274 (50.9)	0.0124
HF hospitalization, N (%)	177 (30.9)	124 (23.0)	0.0033
Hypertension, N (%)	429 (74.9)	495 (92.0)	<0.0001
Hypercholesterolaemia, N (%)	373 (65.1)	400 (74.3)	0.0008
ACS within 6 months, N (%)	30 (5.2)	27 (5.0)	0.8698
MI, N (%)	251 (43.8)	159 (29.6)	<0.0001
CAD, N (%)	274 (47.8)	181 (33.6)	<0.0001
CABG or PCI, N (%)	254 (44.3)	174 (32.3)	<0.0001
Valvular heart disease, N (%)	92 (16.1)	89 (16.5)	0.8262
Invasive electrophysiological procedure, N (%)	59 (10.3)	34 (6.3)	0.0164
Left Bundle Branch Block (LBBB), N (%)	92 (16.1)	37 (6.9)	<0.0001
Electrical cardioversion in the previous 6 months, N (%)	6 (1.0)	14 (2.6)	0.0528
Electrical defibrillation in the previous 6 months, N (%)	3 (0.5)	1 (0.2)	0.3450
Hemoglobin, g/dL	13.80 ± 1.55	13.41 ± 1.50	<0.0001
Atrial fibrillation/flutter ¹ , (N%)	256 (44.7)	286 (53.2)	0.0055
Atrial fibrillation ² , (N%)	249 (43.5)	274 (50.9)	0.0124
HF hospitalization, (N%)	177 (30.9)	124 (23.0)	0.0033
Hypertension, (N%)	429 (74.9)	495 (92.0)	<0.0001
Hypercholesterolaemia, (N%)	373 (65.1)	400 (74.3)	0.0008
ACS within 6 months, (N%)	30 (5.2)	27 (5.0)	0.8698
MI, (N%)	251 (43.8)	159 (29.6)	<0.0001
CAD, (N%)	274 (47.8)	181 (33.6)	<0.0001
CABG or PCI, (N%)	254 (44.3)	174 (32.3)	<0.0001
Valvular heart disease, (N%)	92 (16.1)	89 (16.5)	0.8262
Invasive EP procedure, (N%)	59 (10.3)	34 (6.3)	0.0164
Left Bundle Branch Block, (N%)	92 (16.1)	37 (6.9)	<0.0001
Electrical cardioversion in the last 6 months, (N%)	6 (1.0)	14 (2.6)	0.0528
Electrical defibrillation in the last 6 months, (N%)	3 (0.5)	1 (0.2)	0.3450
Cardiac Biomarker			
NT-proBNP [pg/mL]	1840 (1092, 3210)	966 (519, 1658)	<0.0001#
Troponin T [ng/L]	20.9 (14.7, 33.4)	17.0 (11.5, 27.6)	<0.0001#
NT-proBNP*, pg/mL	1840 (1092, 3210)	966 (519, 1658)	<0.0001#
Troponin T*, ng/L	20.9 (14.7, 33.4)	17.0 (11.5, 27.6)	<0.0001#

1 Abbreviations: ACS: acute coronary syndrome, BMI: body mass index, CABG: coronary artery bypass graft, CAD:
2 coronary artery disease, DBP: diastolic blood pressure, eGFR: estimated glomerular filtration rate, EP
3 electrophysiology, HF: heart failure, hs-cTnT: high sensitive cardiac troponin T, LVEF: left ventricular ejection
4 fraction, MI: myocardial infarction, NYHA: New York heart association, NT-proBNP: N terminal pro b type
5 natriuretic peptides, PCI: percutaneous coronary intervention, SBP: systolic blood pressure.

6
7 * Median (IQR) ** Diabetes status is determined by a combination of medical history and pre-treatment HbA1c
8 values. ¹Defined as atrial fibrillation or atrial flutter reported in any ECG before treatment intake or history of atrial
9 fibrillation or atrial flutter reported as medical history. ²Defined as atrial fibrillation reported in any ECG before
10 treatment intake or history of atrial fibrillation reported in medical history. ³Reported either on heart failure history
11 and diagnosis or Health Care Resource Utilization form.

12 ^ t-test for continuous variables and chi-square test for categorical variables. # based on log-transformed results.

13

1 **Table XX.** Congestion signs and symptoms stratified by levels of LVEF at baseline (<40%, >=40%).

2

	<40%	>=40%	p-value*
Number of patients	573 (100.0)	538 (100.0)	
NYHA, N (%)			
II	448 (78.2)	442 (82.2)	0.2365
III	123 (21.5)	95 (17.7)	
IV	2 (0.3)	1 (0.2)	
KCCQ Orthopnea, N (%)			
Never over past 2 weeks or <1 time/week	464 (81.0)	455 (84.6)	0.0707
1-2 times/week	48 (8.4)	39 (7.2)	
3 times or more but not every day	32 (5.6)	14 (2.6)	
Every night	29 (5.1)	28 (5.2)	
Missing	0	2 (0.4)	
KCCQ Fatigue, N (%)			
Never	171 (29.8)	121 (22.5)	0.0224
<1 time per week or 1-2 times per week	192 (33.5)	215 (40.0)	
3 or more times per week or at least once a day	132 (23.0)	134 (24.9)	
Either several times per day or all of the time	78 (13.6)	67 (12.5)	
Missing	0	1 (0.2)	
Peripheral Edema, N (%)			
Absent	428 (74.7)	392 (72.9)	0.8212
Trace	53 (9.2)	48 (8.9)	
Up to ankle	41 (7.2)	44 (8.2)	
Above ankle	51 (8.9)	54 (10.0)	
Sacral	0	0	
Ascites	0	0	
Abnormal JVD, N(%)			
No	537 (93.7)	511 (95.0)	0.3616
Yes	36 (6.3)	27 (5.0)	
Pulmonary rales, N (%)			
Absent	498 (86.9)	499 (92.8)	0.0038
Bases	72 (12.6)	36 (6.7)	
One third of lung field or more	3 (0.5)	3 (0.6)	
S3 gallop, N (%)			
No	556 (97.0)	533 (99.1)	0.0121
Yes	17 (3.0)	5 (0.9)	

	<40%	>=40%	p-value*
Cardiac Murmur, N (%)			
No	502 (87.6)	478 (88.8)	0.5221
Yes	71 (12.4)	60 (11.2)	

1

2 Abbreviations: NYHA: New York Heart Association, KCCQ: Kansas City Cardiomyopathy Questionnaire, JVD:
3 jugular vein distention; * p-values from ordinal regression likelihood ratio test.

4

Supplementary Table XX. Congestion signs and symptoms stratified by tertiles of CA-125 at baseline - rEF (LVEF <=40%).

	Lowest tertile N=193	Middle tertile N=193	Highest tertile N=194	p-value*
NYHA N (%)				0.71
II	149 (77.2)	153 (79.3)	150 (77.3)	
III	44 (22.8)	39 (20.2)	43 (22.2)	
IV	0	1 (0.5)	1 (0.5)	
KCCQ Orthopnea, N (%)				0.62
Never over past 2 weeks or <1 time/week	158 (81.9)	157 (81.3)	153 (78.9)	
1–2 times/week	18 (9.3)	14 (7.3)	16 (8.2)	
3 times or more but not every day	8 (4.1)	11 (5.7)	13 (6.7)	
Every night	9 (4.7)	11 (5.7)	12 (6.2)	
KCCQ Fatigue, N (%)				0.28
Never	57 (29.5)	66 (34.2)	50 (25.8)	
<1 time per week or 1–2 times per week	67 (34.7)	63 (32.6)	63 (32.5)	
3 or more times per week or at least once a day	42 (21.8)	34 (17.6)	58 (29.9)	
Either several times per day or all of time	27 (14.0)	30 (15.5)	23 (11.9)	
Peripheral Edema, N (%)				0.75
Absent	149 (77.2)	140 (72.5)	144 (74.2)	
Trace	16 (8.3)	15 (7.8)	22 (11.3)	
Up to ankle	14 (7.3)	13 (6.7)	15 (7.7)	
Above ankle	14 (7.3)	25 (13.0)	13 (6.7)	
Sacral	0	0	0	
Ascites	0	0	0	
Abnormal JVD, N (%)				0.07
No	186 (96.4)	179 (92.7)	178 (91.8)	
Yes	7 (3.6)	14 (7.3)	16 (8.2)	
Pulmonary rales, N (%)				0.03
Absent	167 (86.5)	170 (88.1)	168 (86.6)	
Bases	26 (13.5)	23 (11.9)	23 (11.9)	
One third of lung field or more	0	0	3 (1.5)	
S3 gallop, N (%)				0.58
No	188 (97.4)	183 (94.8)	191 (98.5)	
Yes	5 (2.6)	10 (5.2)	3 (1.5)	
Cardiac Murmur, N (%)				0.45
No	170 (88.1)	171 (88.6)	166 (85.6)	
Yes	23 (11.9)	22 (11.4)	28 (14.4)	

Abbreviations: NYHA: New York Heart Association, KCCQ: Kansas City Cardiomyopathy Questionnaire, JVD: jugular vein distention

Baseline carbohydrate antigen 125 [U/mL]: T1: 12.70, T2: 24.50. * - p-value from ordinal regression likelihood ratio test

Supplementary Table XX. Congestion signs and symptoms stratified by tertiles of CA-125 at baseline – pEF (LVEF >40%).

	Lowest tertile N=177	Middle tertile N=177	Highest tertile N=177	p-value*
NYHA N (%)				0.04
II	152 (85.9)	149 (84.2)	137 (77.4)	
III	25 (14.1)	28 (15.8)	39 (22.0)	
IV	0	0	1 (0.6)	
KCCQ Orthopnea, N (%)				0.39
Never over past 2 weeks or <1 time/week	148 (83.6)	154 (87.0)	149 (84.2)	
1–2 times/week	18 (10.2)	9 (5.1)	12 (6.8)	
3 times or more but not every day	3 (1.7)	5 (2.8)	6 (3.4)	
Every night	7 (4.0)	8 (4.5)	10 (5.6)	
Missing	1 (0.6)	1 (0.6)	0	
KCCQ Fatigue, N (%)				0.14
Never	49 (27.7)	37 (20.9)	33 (18.6)	
<1 time per week or 1–2 times per week	68 (38.4)	78 (44.1)	68 (38.4)	
3 or more times per week or at least once a day	42 (23.7)	40 (22.6)	50 (28.2)	
Either several times per day or all of time	18 (10.2)	21 (11.9)	26 (14.7)	
Missing	0	1 (0.6)	0	
Peripheral Edema, N (%)				0.97
Absent	131 (74.0)	132 (74.6)	124 (70.1)	
Trace	11 (6.2)	13 (7.3)	24 (13.6)	
Up to ankle	15 (8.5)	15 (8.5)	13 (7.3)	
Above ankle	20 (11.3)	17 (9.6)	16 (9.0)	
Sacral	0	0	0	
Ascites	0	0	0	
Abnormal JVD, N (%)				0.81
No	168 (94.9)	168 (94.9)	169 (95.5)	
Yes	9 (5.1)	9 (5.1)	8 (4.5)	
Pulmonary rales, N (%)				0.70
Absent	162 (91.5)	168 (94.9)	162 (91.5)	
Bases	14 (7.9)	9 (5.1)	13 (7.3)	
One third of lung field or more	1 (0.6)	0	2 (1.1)	
S3 gallop, N (%)				0.16
No	176 (99.4)	177 (100.0)	174 (98.3)	
Yes	1 (0.6)	0	3 (1.7)	
Cardiac Murmur, N (%)				0.39
No	160 (90.4)	158 (89.3)	155 (87.6)	
Yes	17 (9.6)	19 (10.7)	22 (12.4)	

Abbreviations: NYHA: New York Heart Association, KCCQ: Kansas City Cardiomyopathy Questionnaire, JVD: jugular vein distention.

Baseline carbohydrate antigen 125 [U/mL]: T1: 11.01, T2: 18.73.* - p-value from ordinal regression likelihood ratio test.

Figure XX. Cox regression for time to first event of HHF or CV death by CA-125 at baseline (continuous spline)

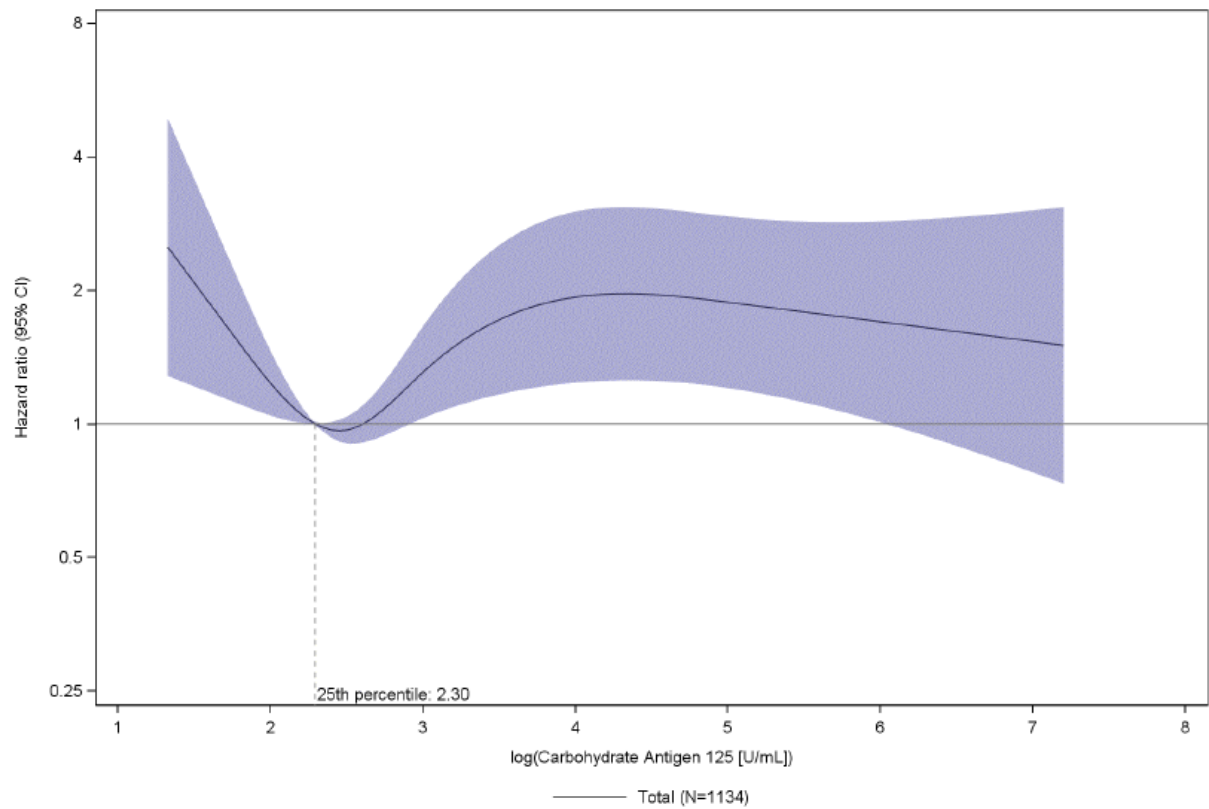


Figure 14.3.1.3 Cox regr. for time to first event of adjudicated HHF or CV death by CA 125 at baseline (cont - spline) - BM-B.121 and .110 pooled
Knot 1: 5th percentile: 1.77, knot 2: 35th percentile: 2.49, knot 3: 65th percentile: 3.01, knot 4: 95th percentile: 5.04