



HAL
open science

Highly immunosuppressive myeloid cells correlate with early relapse after allogeneic stem cell transplantation

Anne-Béatrice Notarantonio, Allan Bertrand, Romain Piucco, Ghislain Fievet, Hervé Sartelet, Laura Boulangé, Natalia de Isla, Marcelo de Carvalho-Bittencourt, Sébastien Hergalant, Marie-Thérèse Rubio, et al.

► To cite this version:

Anne-Béatrice Notarantonio, Allan Bertrand, Romain Piucco, Ghislain Fievet, Hervé Sartelet, et al.. Highly immunosuppressive myeloid cells correlate with early relapse after allogeneic stem cell transplantation. *Experimental Hematology & Oncology*, 2024, 13 (1), pp.50. <10.1186/s40164-024-00516-4>. <hal-04576863>

HAL Id: hal-04576863

<https://hal.univ-lorraine.fr/hal-04576863v1>

Submitted on 3 Nov 2024

HAL is a multi-disciplinary open access archive for the deposit and dissemination of scientific research documents, whether they are published or not. The documents may come from teaching and research institutions in France or abroad, or from public or private research centers.

L'archive ouverte pluridisciplinaire HAL, est destinée au dépôt et à la diffusion de documents scientifiques de niveau recherche, publiés ou non, émanant des établissements d'enseignement et de recherche français ou étrangers, des laboratoires publics ou privés.



Distributed under a Creative Commons CC BY 4.0 - Attribution - International License

CORRESPONDENCE

Open Access



Highly immunosuppressive myeloid cells correlate with early relapse after allogeneic stem cell transplantation

Anne-Béatrice Notarantonio^{1,2†}, Allan Bertrand^{1†}, Romain Piucco³, Ghislain Fievet³, Hervé Sartelet⁴, Laura Boulangé¹, Natalia de Isla¹, Marcelo De Carvalho Bittencourt^{1,5}, Sébastien Hergalant³, Marie-Thérèse Rubio^{1,2} and Maud D'Aveni^{1,2*}

Abstract

Background Allogeneic hematopoietic stem cell transplantation (allo-HSCT) is the only curative treatment for myeloid malignancies such as some acute myeloid leukemias (AML) and high-risk myelodysplastic syndromes (MDS). It aims to eradicate the malignant clone using immunocompetent donor cells (graft-versus-leukemia effect, GVL). Unfortunately, relapse is the primary cause of transplant failure mainly related on HLA loss or downregulation and upregulation of inhibitory ligands on blasts which result in donor immune effector dysfunctions.

Methods Between 2018 and 2021, we conducted a monocentric prospective study including 61 consecutive patients transplanted for AML or high-risk MDS. We longitudinally investigated immune cells at days +30, +90 and +180 post-transplant from bone marrow and peripheral blood. We assessed the dynamics between myeloid derived suppressor cells (MDSCs) and T-cells.

Results Among the 61 patients, 45 did not relapse over the first 12 months while 16 relapsed during the first year post-transplant. Through months 1 to 6, comparison with healthy donors revealed a heterogenous increase in MDSC frequency. In all recipients, the predominant MDSC subset was granulocytic with no specific phenotypic relapse signature. However, in relapsed patients, in vitro and in vivo functional analyses revealed that MDSCs from peripheral blood were highly immunosuppressive from day +30 onwards, with an activated NLRP3 inflammasome signature. Only circulating immunosuppressive MDSCs were statistically correlated to circulating double-positive Tim3+LAG3+ exhausted T cells.

Conclusion Our simple in vitro functional assay defining MDSC immunosuppressive properties might serve as an early biomarker of relapse and raise the question of new preventive treatments targeting MDSCs in the future.

Trial registration [NCT03357172](https://clinicaltrials.gov/ct2/show/study/NCT03357172)

Keywords Allogeneic stem cell transplantation, Relapse, MDSC

[†]Anne-Béatrice Notarantonio and Allan Bertrand contributed equally to this work.

*Correspondence:

Maud D'Aveni

m.daveni-piney@chru-nancy.fr

Full list of author information is available at the end of the article



Allogeneic hematopoietic stem cell transplantation (allo-HSCT) is the only curative treatment for myeloid malignancies such as high-risk acute myeloid leukemias (AML) and myelodysplastic syndromes (MDS). Allo-HSCT holds promise for long-term disease control. Donor allo-reactive T cells can both eliminate residual tumor cells (graft-versus-leukemia, GVL) and damage normal host tissues, causing the graft-versus-host disease (GVHD). Currently, relapse remains the main cause of death after allo-HSCT and is attributed to the loss of the GVL effect based on diverse mechanisms such as genomic HLA loss, transcriptional changes of HLA class II expression and upregulation of inhibitory ligands on blasts [1]. Myeloid derived suppressor cells (MDSCs) represent a heterogeneous cell population and their role in the tumor escape

from the allogeneic immune response remains a subject of debate [2]. In mouse models, MDSCs isolated from tumor-bearing mice [3], G-CSF treated mice [4] or in vitro cultures [3, 5, 6], infused on day +0 or post-transplant, alleviate GVHD while preserving GVL effect. In human cohorts, higher frequencies of M-MDSC were described as early parameters strongly associated to subsequent relapse in recipients [7, 8] with conflicting results [9].

In the present study, we investigated MDSCs and early T-cell differentiation in 61 patients allografted for AML or high-risk MDS during the first 6 months post-transplantation to identify a specific immune signature of relapse. Patient characteristics and outcomes are described in Additional file 1: Tables S1 and S2, according

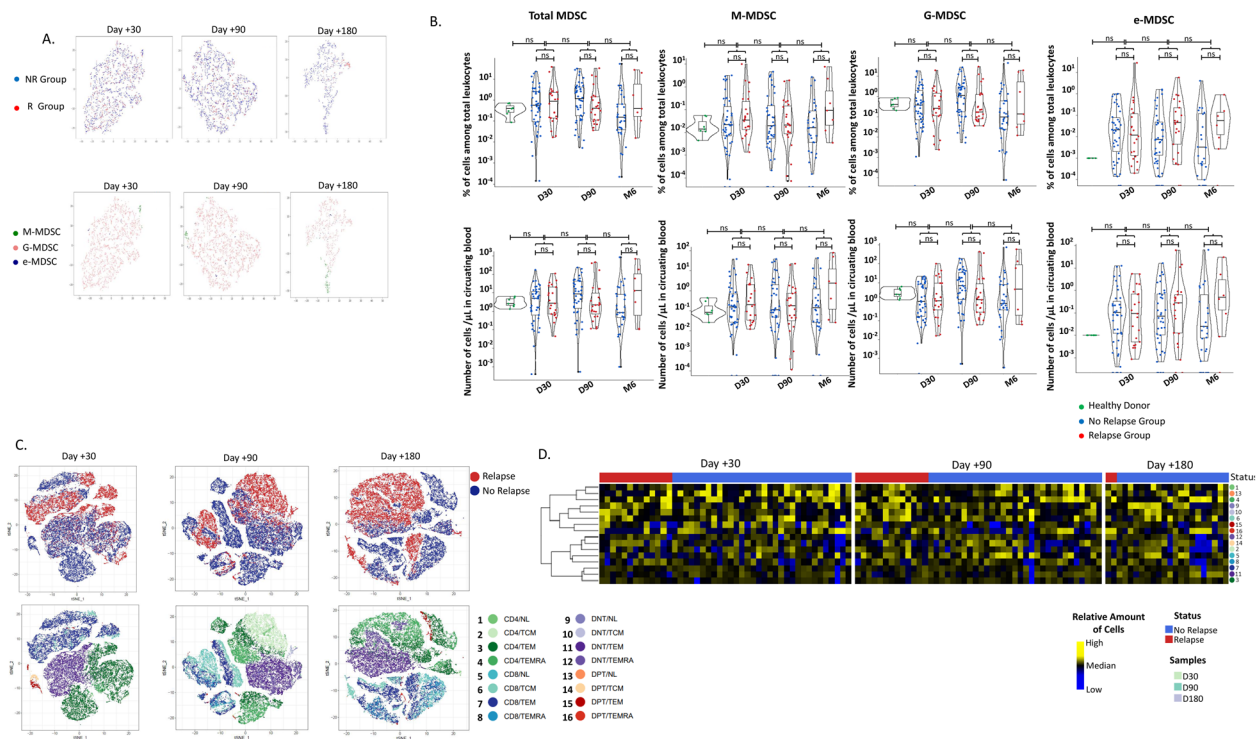


Fig. 1 MDSC and T-cell landscape during the first 6 months after allo-HSCT. **A** Unsupervised analyses of MDSC circulating in recipient peripheral blood at day +30, day +90 and day +180. Circulating MDSC are similarly observed in NR and R groups. Granulocytic MDSC are the main subset among the MDSC. **B** Percentage and absolute numbers of MDSC subpopulations values across patients in “R” group and patients in “NR group”, compared to healthy donor. The bar indicates median value, the box represents the lower and upper quartile, the violin plots represents the density. No significant statistical difference was observed at D30, D90 and D 180 (M6), between the three groups. P-values correspond to Wilcoxon signed-rank tests. All tests are NS= not significant. For total MDSC, we observe 0.40% ± 0.08% in healthy donors; 3.70% ± 1.92%, 3.36% ± 1.61% and 7.11% ± 4.36% in “R” group and 2.44% ± 0.71%, 4.11% ± 1.12% and 2.52% ± 1.74% in NR group at D30, D90 and M6 respectively. For total MDSC, we observe 3.44 ± 0.73 MDSC/μL in circulating blood in healthy donors; 14.71 ± 5.66, 47.33 ± 25.70 and 134.1 ± 94.02/μL in “R” group at D30, D90 and M6, and 12.42 ± 4.4, 29.97 ± 8.05 and 36.02 ± 28.59 in “NR” group. **C** t-Distributed Stochastic Neighbor Embedding (tSNE) analyses of T-cells circulating in recipient peripheral blood at Day +30, Day +90 and Day +180. The different T-cell subsets are similarly observed in NR (blue) and R (red) groups. Memory T cells are the main subset among T-cell subsets. In each group, 5000 cells from 5 randomly selected patients were pooled together then reduced to tSNE representation. **D** Hierarchical clustering heatmap of T cells circulating in recipient peripheral blood. PBMCs from 61 AML/MDS patients with (n = 16) and without (n = 45) documented subsequent tumor relapse were collected at Day +30, Day +90 and Day +180 after transplantation and analyzed by flow cytometry according to their differentiation profile. No specific T-cell subpopulations were associated with relapse

to 2 groups: the “R” group defined by early relapse occurring within 12 months following allo-HSCT and the “NR” group defined by no relapse over the first 12 months after allo-HSCT.

MDSCs were similarly observed in all recipients and were predominantly represented by the granulocytic subset (Fig. 1A). As previously described [10], in comparison with healthy donors, the percentages and numbers of MDSCs among circulating CD45+ leukocytes were heterogeneously increased within 6 months after allo-HSCT (Fig. 1B). Concomitantly, we did not identify a specific pattern of peripheral blood T-cell differentiation in patients with early relapse (Fig. 1C). As previously described [9], T-cell differentiation was largely skewed toward effector memory T cells (T_{EM} and T_{EMRA}) (Fig. 1D).

Initial experiments exploring MDSC immunosuppressive properties were performed using a CD3/CD28 microbead-based assay. We observed significant inhibition of T-cell proliferation by MDSCs (Fig. 2A). However, visual examination suggested MDSC sequestration of CD3/CD28 microbeads, as previously demonstrated with murine MDSCs [11]. We therefore consistently evaluated MDSC immunosuppressive properties in a plate-bound anti-CD3/28 T-cell stimulation assay. We did not observe T-cell proliferation suppression in the presence of MDSCs in the NR group at 1, 3 and 6 months after allo-HSCT. Conversely, MDSCs sorted from the R group exhibited an immunosuppressive effect since day +30 (Fig. 2B) with an activated NLRP3 inflammasome (Fig. 2C). Only immunosuppressive MDSC confirmed *in vitro*, protect NSG mice from GVHD (Fig. 2D), with a lower GVHD histopathological score (Fig. 2F). Finally, we

(See figure on next page.)

Fig. 2 Immunosuppressive MDSCs circulating on day +30 are observed in early relapse and correlate with exhausted T cells. **A** CD3/CD28 microbead-based assay. For early post-transplant (samples before day +90), T-cells were activated and then cultured alone, or with MDSC cells at a 1:1 ratio (50,000 T cells:50,000 MDSCs) sorted from circulating blood of recipients before days 60 post-transplant (n=4). For late post-transplant, T-cells were activated and then cultured alone, or with MDSC cells at a 1:1 ratio (50,000 T cells:50,000 MDSCs) sorted from circulating blood of recipients after day 90 post-transplant (n=4). For early post-transplant, mean number of proliferating CD4+ and CD8+ T-cells activated alone (orange) were respectively $129,172 \pm 14,559$ and $92,065 \pm 6,945$, versus $30,812 \pm 16,727$ and $22,049 \pm 12,815$ in co-culture with MDSCs (green) (*p=0.0286). For late post-transplant (samples after day +90), mean number of proliferating CD4+ and CD8+ cells activated alone were $100,255 \pm 19,412$ and $86,805 \pm 21,707$ versus $28,138 \pm 8601$ and $19,943 \pm 5585$ in culture with MDSCs (*p=0.0286). **B** Plate-bound anti-CD3, anti-CD28 assay. The ratio corresponds to the calculation of the number of proliferating T-cells activated in co-culture with MDSCs divided by the number of proliferating T-cells activated alone in culture. Ratio was calculated for co-cultures performed with MDSCs sorted from recipient blood or bone marrow at day 30 (D30), day 90 (D90) and 6 months (M6), with a 1 MDSC:1T-cell ratio. Immunosuppressive MDSC are defined when a ratio of < 1 is observed in the MDSC/T-cell coculture. At D30, ratio for proliferating CD4+ T cells cultured with MDSCs from recipient blood are 2.74 ± 0.70 in NR group (n=13) versus 0.53 ± 0.21 in R group (n=3) (*p=0.0143) and 4.76 ± 1.81 vs 0.67 ± 0.12 for CD8+ (**p=0.0036). At D30, ratio for proliferating CD4+ T cells cultured with MDSCs from recipient bone marrow are 7.24 ± 2.00 in NR group (n=10) versus 1.22 ± 0.96 in R group (n=5) (**p=0.0080) and 14.09 ± 4.48 vs 2.21 ± 1.32 for CD8+ (*p=0.0400). At D90, ratio for proliferating CD4+ T cells cultured with MDSCs from recipient blood are 2.31 ± 0.39 in NR group (n=15) versus 0.59 ± 0.22 in R group (n=3) (*p=0.0172) and 2.95 ± 0.62 vs 0.66 ± 0.19 for CD8+ (**p=0.0098). At D90, ratio for proliferating CD4+ T cells cultured with MDSCs from recipient bone marrow are 2.41 ± 0.66 in NR group (n=9) versus 1.036 ± 0.38 in R group (n=5) (p=0.1194) and 4.21 ± 1.55 vs 1.024 ± 0.44 for CD8+ (p=0.1194). At M6, ratio for proliferating CD4+ T cells cultured with MDSCs from recipient blood are 2.38 ± 0.79 in NR group (n=16) versus 0.27 ± 0.09 for relapse group (n=3) (*p=0.0144) and 3.32 ± 1.32 vs 0.35 ± 0.08 for CD8+ (**p=0.0041). At M6, ratio for CD4+ cultured with MDSCs from recipient bone marrow are 1.87 ± 0.97 in NR group (n=9) versus 0.33 ± 0.17 in R group (n=5) (*p=0.0290) and 2.59 ± 1.43 vs 0.43 ± 0.20 for CD8+ (*p=0.0120). **C** Percentage of myeloid cells with activated inflammasome. We evaluated the % of double positive (NLRP3+ and IL1 β +) in three MDSC subsets (M-MDSC, G-MDSC, e-MDSC) and the myeloid counterpart (CD33+HLA-DR+) in peripheral blood and in bone marrow. In peripheral blood, the percentage of double positive (NLRP3 and IL1 β) in each four myeloid subset is compared in the “NR” group (n=26) versus the “R” group (n=4). This percentage is statistically different in the e-MDSC subset ($7.55\% \pm 2.07\%$ vs $14.25\% \pm 1.85\%$, respectively, *p=0.0315). In the M-MDSC, G-MDSC and the myeloid counterpart, the percentages are comparable with $7.22\% \pm 2.11\%$ vs $6.05\% \pm 3.03\%$, $15.91\% \pm 3.51\%$ vs $17.42\% \pm 9.17\%$ and $14.28\% \pm 3.75\%$ vs $9.87\% \pm 6.86\%$, respectively. In bone marrow, the percentage of double positive (NLRP3 and IL1 β) in each four myeloid subset is compared in the “NR” group (n=15) versus “R” group (n=4). This percentage is statistically different in G-MDSC and e-MDSC subsets ($13.43\% \pm 3.79\%$ vs $39.22\% \pm 9.58\%$, *p=0.0139 and $15.47\% \pm 4.35\%$ vs $44.32\% \pm 7.63\%$, *p=0.0139, respectively). There is also a trend in M-MDSC ($9.09\% \pm 3.87\%$ vs $20.56\% \pm 6.62\%$, p=0.0769). However in the CD33+HLA DR+ subset, there is no significant difference in the «NR» group vs «R» group, with $6.58\% \pm 2.36\%$ vs $9.79\% \pm 3.05\%$ (p=0.2256), respectively. **D** Median survival in mice receiving PBMC with MDSC from “R” group was not reached by day 60 vs 35 days for mice injected with PBMC alone vs 24 days for mice injected with PBMC and MDSC from “NR” group (p=0.0281). Data shown represent pooled results from 2 independent experiments. Results were compared with Kaplan–Meier survival curves. Percent weight variations were at day +42 post-HSCT: $+4.60 \pm 0.64\%$ in mice injected with PBMC and MDSC from “R group” (n=3) vs $-1.91 \pm 2.93\%$ in mice injected with PBMC alone (n=7) (p=0.05), vs $-11.08 \pm 4.46\%$ in mice injected with PBMC and MDSC from “NR” group (n=6) (p=0.0087). Data were compared using Student’s unpaired t-test. **E** Representative histological analyses of GVHD target organs in each group. Portal inflammation with diffuse or nodular infiltrate of mononuclear cells, and endothelitis observed in the group with “PBMC alone” and the group “PBMC+ non IS MDSC”. **F** Correlation heatmaps on day +30 between MDSC and exhausted T-cell subsets in the “R” group (n=6) highlighted in red. Color scale: blue (negative correlation); yellow (positive correlation); black (no correlation). Spearman’s tests on semi-automatic-gating cell counts after removal of unpopulated and insufficiently populated subpopulations. Exhaustion markers for each subset are displayed on the left

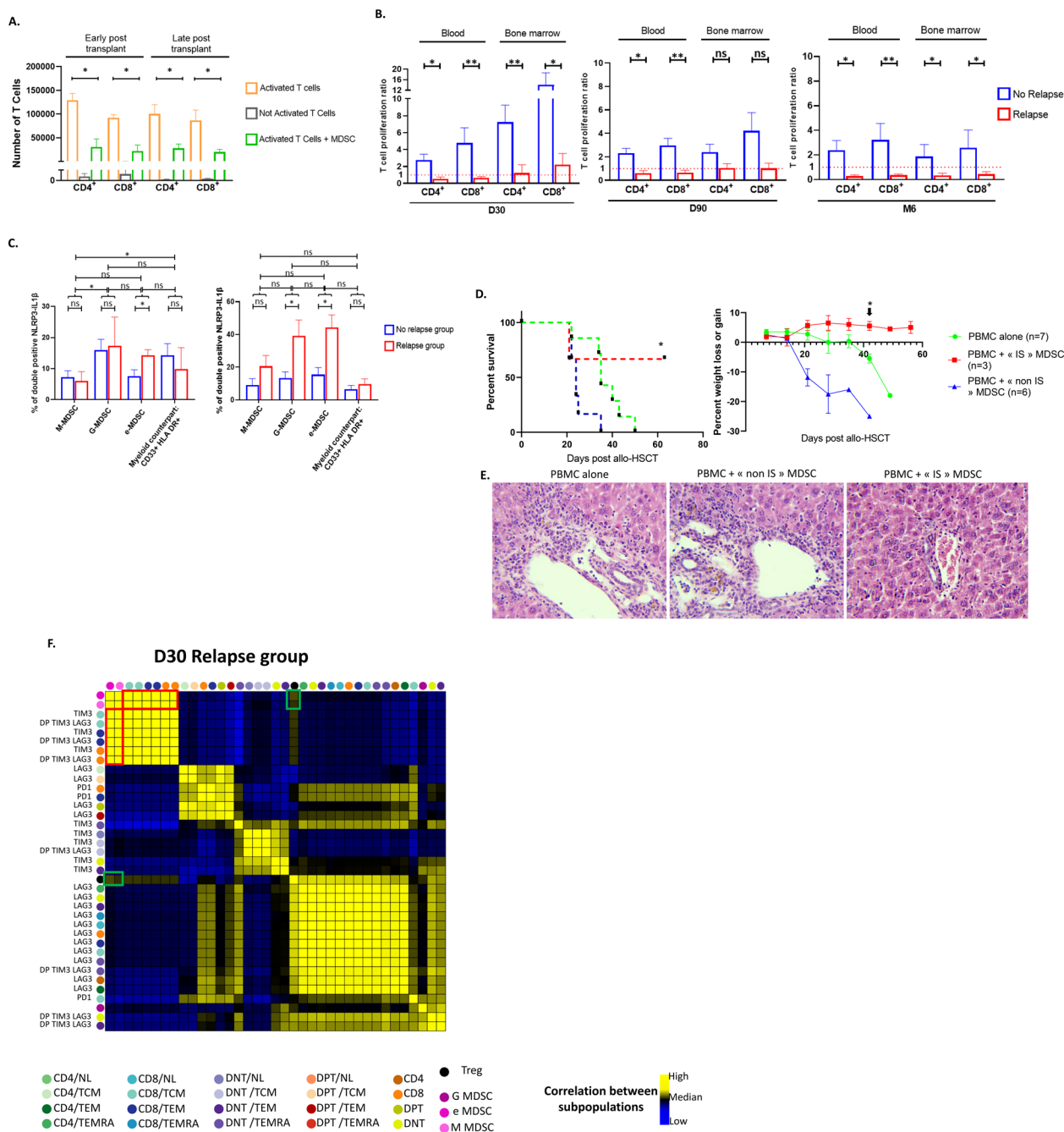


Fig. 2 (See legend on previous page.)

found strong positive correlations between immunosuppressive M-MDSCs and exhausted CD8⁺ T cells circulating in the R group but no correlation with Tregs (Fig. 2E).

If MDSCs preserve the GVL effect in mouse models [3, 5], only few prospective studies reported a correlation between higher M-MDSC frequencies in patients in the

30 days following allo-HSCT and a higher probability of relapse [7, 8]. Other studies have suggested in vitro that MDSCs might suppress donor T cell proliferation and Th1 differentiation and promoted Treg development [10, 12]. The strength of our study is that we prospectively studied fresh recipient samples, and we focused

on myeloid malignancies transplanted after a “Flu-Bu” regimen with HLA-matched donors, avoiding irradiation and cyclophosphamide in the preparative regimen and avoiding post-transplant G-CSF and cyclophosphamide that might induce MDSCs, as suggested in mouse models. Our study highlights for the first time that MDSCs defined only by phenotypic features should be interpreted with caution in the allo-HSCT context. The accumulation of immature myeloid cells with an MDSC-like phenotype seemed to be linked to inflammatory hematopoiesis after allo-HSCT. Of note, it has been previously demonstrated in mice that under inflammatory conditions, MDSCs accumulate and rapidly differentiate away from immature lineage cells, losing their immunosuppressive properties. Our *in vitro* T-cell proliferation assay seems robust, as immunosuppressive properties assessed *in vitro* were confirmed *in vivo*. Moreover, this assay can be easily performed in immunology laboratories. Our study underlined that the functional assay based on anti-CD3/CD28 microbeads for investigating MDSC immunosuppressive properties [10, 12] should be avoided, as it artificially blocks T-cell proliferation by bead phagocytosis from myeloid cells. Consequently, we conclude that both immunophenotyping and functional assays are needed to clearly identify MDSCs in the context of allo-HSCT.

In the context of allo-HSCT, we propose to distinguish: (i) the accumulation of immature myeloid cells with an MDSC-like phenotype that solely results from alloreactive inflammation and (ii) circulating immunosuppressive MDSCs that correlate with exhausted CD8⁺ T cells. These MDSC display a specific activated NLRP3 inflammasome signature, particularly in bone marrow, suggesting a probable cancer persisting microenvironment (with consequently an early relapse).

Abbreviations

Allo-HSCT	Allogeneic hematopoietic stem cell transplantation
AML	Acute myeloid leukemia
ATLG	Anti-T lymphocyte globulin
CMV	Cytomegalovirus
CR	Complete remission
ELN	European Leukemia Network
GVHD	Graft versus host disease
GVL	Graft versus leukemia
HLA	Human leukocyte antigen
IPSS-R	Revised international prognostic scoring system
LAG3	Lymphocyte activation gene-3
NLRP3	“NOD-like” receptor family, pyrin domain containing 3
MHC	Major histocompatibility complex
MDS	Myelodysplastic syndrome
MDSC	Myeloid derived suppressor cell
MRD	Matched related donor
MUD	Matched unrelated donor
Tim 3	T-cell immunoglobulin and mucin containing protein-3 (Tim3)
PD-1	Programmed cell death 1
PR	Partial remission
WHO	World Health Organization

Supplementary Information

The online version contains supplementary material available at <https://doi.org/10.1186/s40164-024-00516-4>.

Additional file 1. Supplementary data: Material and methods, Supplementary tables and figure.

Acknowledgements

The authors thank all the patients and their physicians as well as the nurse and technician staff from Hôpital Brabois, CHRU Nancy, who helped with this study. We thank Huguette Louis from the cytometry core facility of UMS2008IBSLor (Université de Lorraine-CNRS-INSERM)

Author contributions

M.T.R. and M.D. conceived the study, analyzed the data, and wrote the manuscript; A.B.N., A.B., and L.B. conducted the experiments and analyzed the data; R.P., G.F. and S.H. participated in collecting the experimental data, performing the methodology, and editing the manuscript; M.T.R. and M.D. provided patient samples and data; and S.H., M.T.R. and M.D. discussed the results and edited the manuscript.

Funding

This work was supported by grants from La Ligue Contre le Cancer (LCC) to M.T.R. and M.D., and A.B.N. received a fellowship from LCC.

Availability of data and materials

All experimental data are registered in laboratory note books and all clinical and case report forms (CRFs) are reported in electronic questionnaires.

Declarations

Ethics approval and consent to participate

This study was approved by an ethics committee (CPP OUEST II le 05/02/2019) and was identified as clinical trial NCT03357172 (“REAL-GREFFE”).

Consent for publication

All the patients prospectively included in this study signed an informed consent form.

Competing interests

The authors declare no competing financial interests related to this work.

Author details

¹UMR 7365 CNRS, IMoPA, Université de Lorraine, 54000 Nancy, France. ²Hematology Department, CHRU Nancy, Université de Lorraine, 54000 Nancy, France. ³Inserm UMR_S 1256 NGERE, Université de Lorraine, 54500 Vandœuvre-les-Nancy, France. ⁴Anatomopathology Department, CHRU Nancy, Université de Lorraine, 54000 Nancy, France. ⁵Immunology Laboratory, CHRU Nancy, Université de Lorraine, 54000 Nancy, France.

Received: 1 December 2023 Accepted: 27 April 2024

Published online: 11 May 2024

References

- Toffalori C, Zito L, Gambacorta V, et al. Immune signature drives leukemia escape and relapse after hematopoietic cell transplantation. *Nat Med*. 2019;25:603–11.
- D’Aveni M, Notarantonio AB, Bertrand A, et al. Myeloid-derived suppressor cells in the context of allogeneic hematopoietic stem cell transplantation. *Front Immunol*. 2020;11:989.
- Zhang J, Chen HM, Ma G, et al. The mechanistic study behind suppression of GVHD while retaining GVL activities by myeloid-derived suppressor cells. *Leukemia*. 2019;33:2078–89.
- Perobelli SM, Mercadante AC, Galvani RG, et al. G-CSF-induced suppressor IL-10⁺ neutrophils promote regulatory T cells that inhibit

- graft-versus-host disease in a long-lasting and specific way. *J Immunol.* 2016;197:3725–34.
5. Highfill SL, Rodriguez PC, Zhou Q, et al. Bone marrow myeloid-derived suppressor cells (MDSCs) inhibit graft-versus-host disease (GVHD) via an arginase-1-dependent mechanism that is up-regulated by interleukin-13. *Blood.* 2010;116:5738–47.
 6. Messmann JJ, Reisser T, Leithauser F, et al. In vitro-generated MDSCs prevent murine GVHD by inducing type 2 T cells without disabling anti-tumor cytotoxicity. *Blood.* 2015;126:1138–48.
 7. Kim TW, Park SS, Lim JY, et al. Predictive role of circulating immune cell subtypes early after allogeneic hematopoietic stem cell transplantation in patients with acute leukemia. *Int J Stem Cells.* 2018;12:73–83.
 8. Lee SE, Lim JY, Kim TW, et al. Matrix metalloproteinase-9 in monocytic myeloid-derived suppressor cells correlate with early infections and clinical outcomes in allogeneic hematopoietic stem cell transplantation. *Biol Blood Marrow Transplant.* 2018;24:32–42.
 9. Gournay V, Vallet N, Peux V, et al. Immune landscape after allo-HSCT: TIGIT- and CD161-expressing CD4 T cells are associated with subsequent leukemia relapse. *Blood.* 2022;140:1305–21.
 10. Mougiakakos D, Jitschin R, von Bahr L, et al. Immunosuppressive CD14+HLA-DRlow/neg IDO+ myeloid cells in patients following allogeneic hematopoietic stem cell transplantation. *Leukemia.* 2013;27:377–88.
 11. Davis RJ, Silvin C, Allen CT. Avoiding phagocytosis-related artifact in myeloid derived suppressor cell T-lymphocyte suppression assays. *J Immunol Methods.* 2017;440:12–8.
 12. Guan Q, Blankstein AR, Anjos K, et al. Functional myeloid-derived suppressor cell subsets recover rapidly after allogeneic hematopoietic stem/progenitor cell transplantation. *Biol Blood Marrow Transplant.* 2015;21:1205–14.

Publisher's Note

Springer Nature remains neutral with regard to jurisdictional claims in published maps and institutional affiliations.