



HAL
open science

Corrigendum to “Drought response and urban-pollinator attractiveness of ornamental plant species” [Basic and Applied Ecology Volume 78, August 2024, Pages 1–13]

Margaux Quinanzoni, David Marcolet, Alice Michelot-Antalik

► To cite this version:

Margaux Quinanzoni, David Marcolet, Alice Michelot-Antalik. Corrigendum to “Drought response and urban-pollinator attractiveness of ornamental plant species” [Basic and Applied Ecology Volume 78, August 2024, Pages 1–13]. Basic and Applied Ecology, 2025, 82, pp.66-69. 10.1016/j.baae.2024.12.002 . hal-04874575

HAL Id: hal-04874575

<https://hal.univ-lorraine.fr/hal-04874575v1>

Submitted on 8 Jan 2025

HAL is a multi-disciplinary open access archive for the deposit and dissemination of scientific research documents, whether they are published or not. The documents may come from teaching and research institutions in France or abroad, or from public or private research centers.

L'archive ouverte pluridisciplinaire **HAL**, est destinée au dépôt et à la diffusion de documents scientifiques de niveau recherche, publiés ou non, émanant des établissements d'enseignement et de recherche français ou étrangers, des laboratoires publics ou privés.



Corrigendum

Corrigendum to “Drought response and urban-pollinator attractiveness of ornamental plant species” [Basic and Applied Ecology Volume 78, August 2024, Pages 1–13]



Margaux Quinanzoni, David Marcolet, Alice Michelot-Antalik*

Université de Lorraine, INRAE, LAE, F-54000 Nancy, France

The authors would like to apologize for the following errors in the figures:

We **inadvertently reversed** Figs 5 and 6:

- Figure 5 is the one titled: “Barplot of mean barrier traits: (A) nectar tube depth and (B) stamen and pistil length (n = 8). The four colors correspond to plant families. Solid bars represent stamen length, while hatched bars represent pistil length. Dark colors represent the control treatment, while light colors represent the drought treatment. Different lower-case letters represent significant intraspecific differences between drought and control treatment ($p < 0.05$). Different capital letters represent significant differences among species for all treatments combined. Error bars represent ± 1 standard deviation. C: control treatment. S: drought treatment. The abbreviated names of the plants are provided in Fig. 1.”

- Figure 6 is the one titled: “Barplot of mean resource traits: (A) mean nectar sugar concentration and (B) mean total pollen volume per FU. The four colors corresponded to plant families. Dark colors represent the control treatment, while light colors represent the drought treatment. Different lower-case letters represent significant intraspecific differences between treatments ($p < 0.05$). Different capital letters represent significant differences among species for all treatments combined. Error bars represent ± 1 standard deviation. C: control treatment. S: drought treatment. The abbreviated names of the plants are provided in Fig. 1”.

The variable that was supposed to be shown in Fig. 6 is the total pollen volume, not the number of pollen grains. The new Fig. 6 is as follows:

DOI of original article: <https://doi.org/10.1016/j.baae.2024.04.006>.

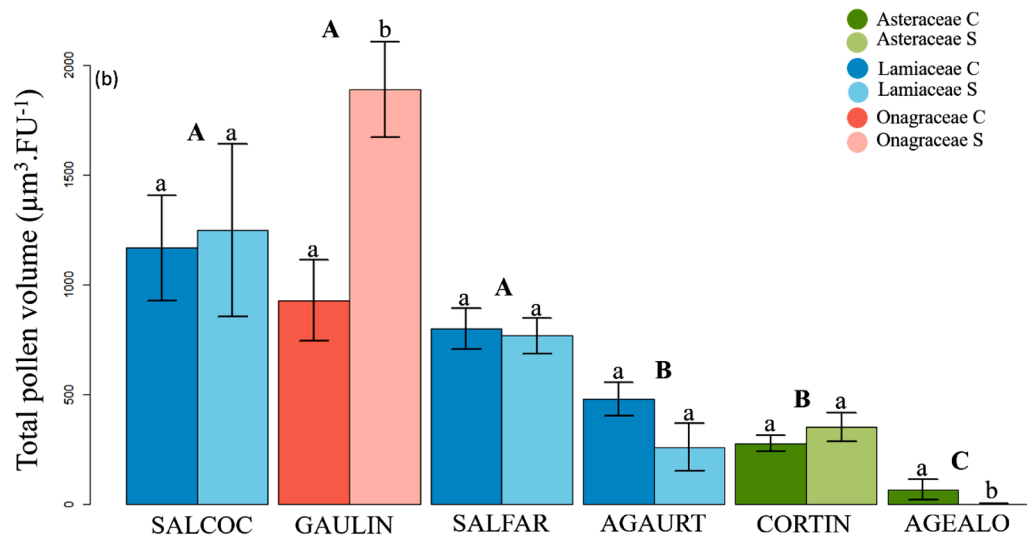
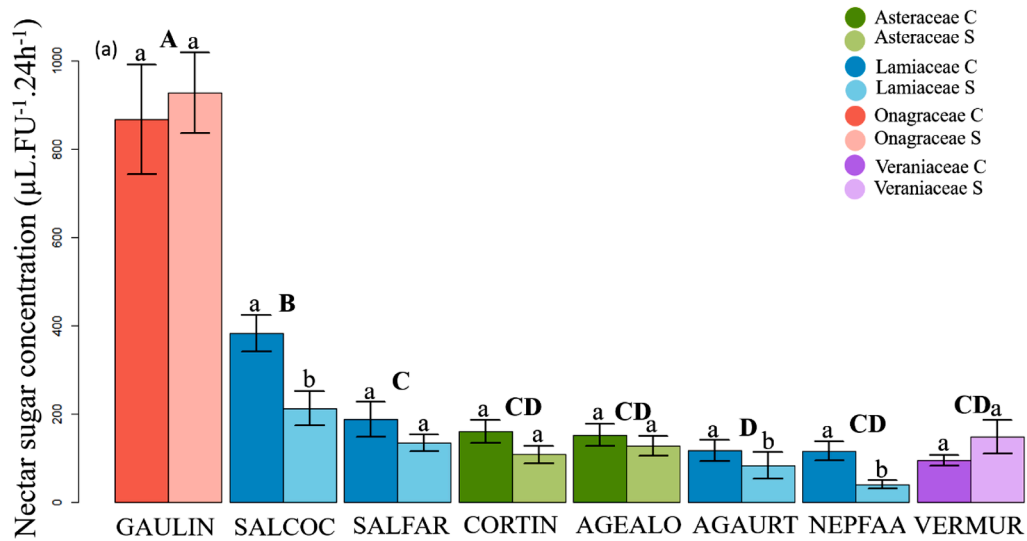
* Corresponding author.

E-mail address: alice.michelot@univ-lorraine.fr (A. Michelot-Antalik).

<https://doi.org/10.1016/j.baae.2024.12.002>

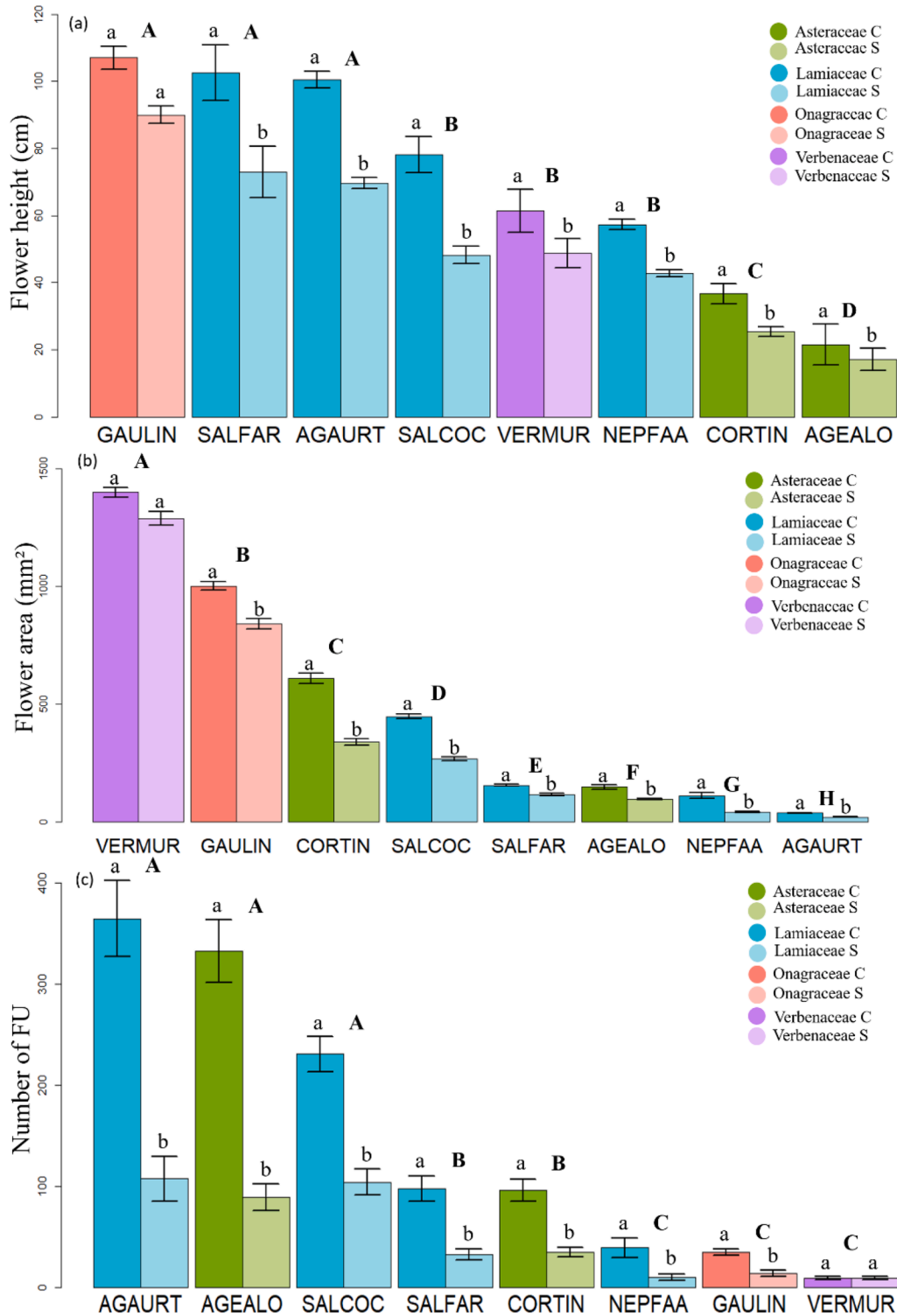
Available online 30 December 2024

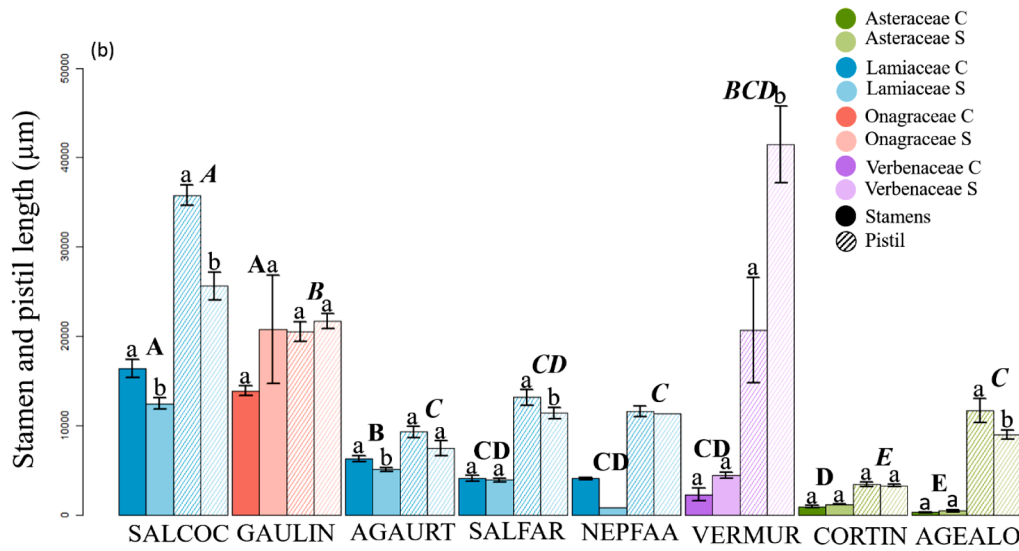
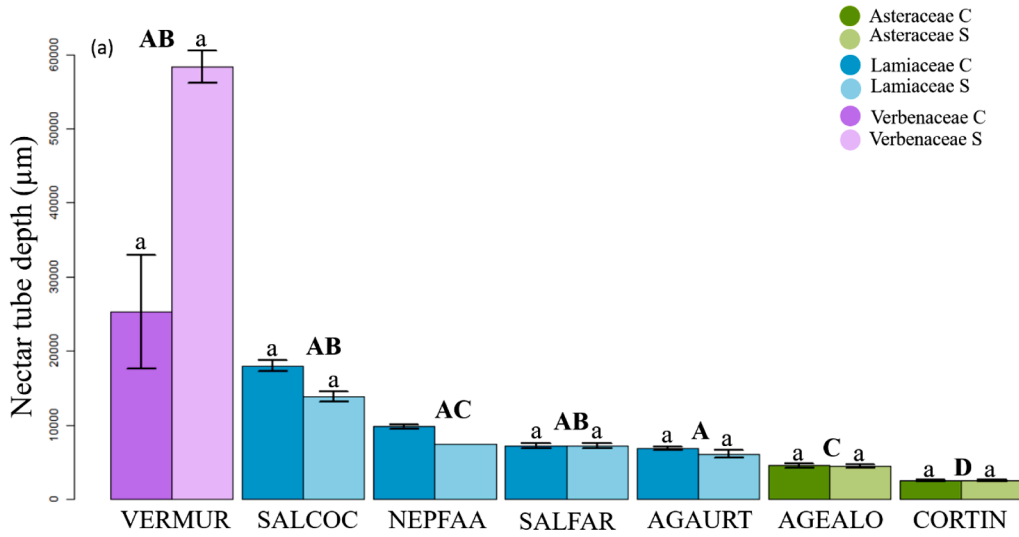
1439-1791/© 2024 The Author(s). Published by Elsevier GmbH on behalf of Gesellschaft für Ökologie. All rights are reserved, including those for text and data mining, AI training, and similar technologies.



Capital letters should be replaced by lowercase letters above error bars in Figure 4, as shown in the following new Figure 4:

Capital letters should be replaced by lowercase letters above error bars in Figure 5, as shown in the following new Figure 5:





The authors would like to apologise for any inconvenience caused.